

SUTTLES LOGGING, INC.



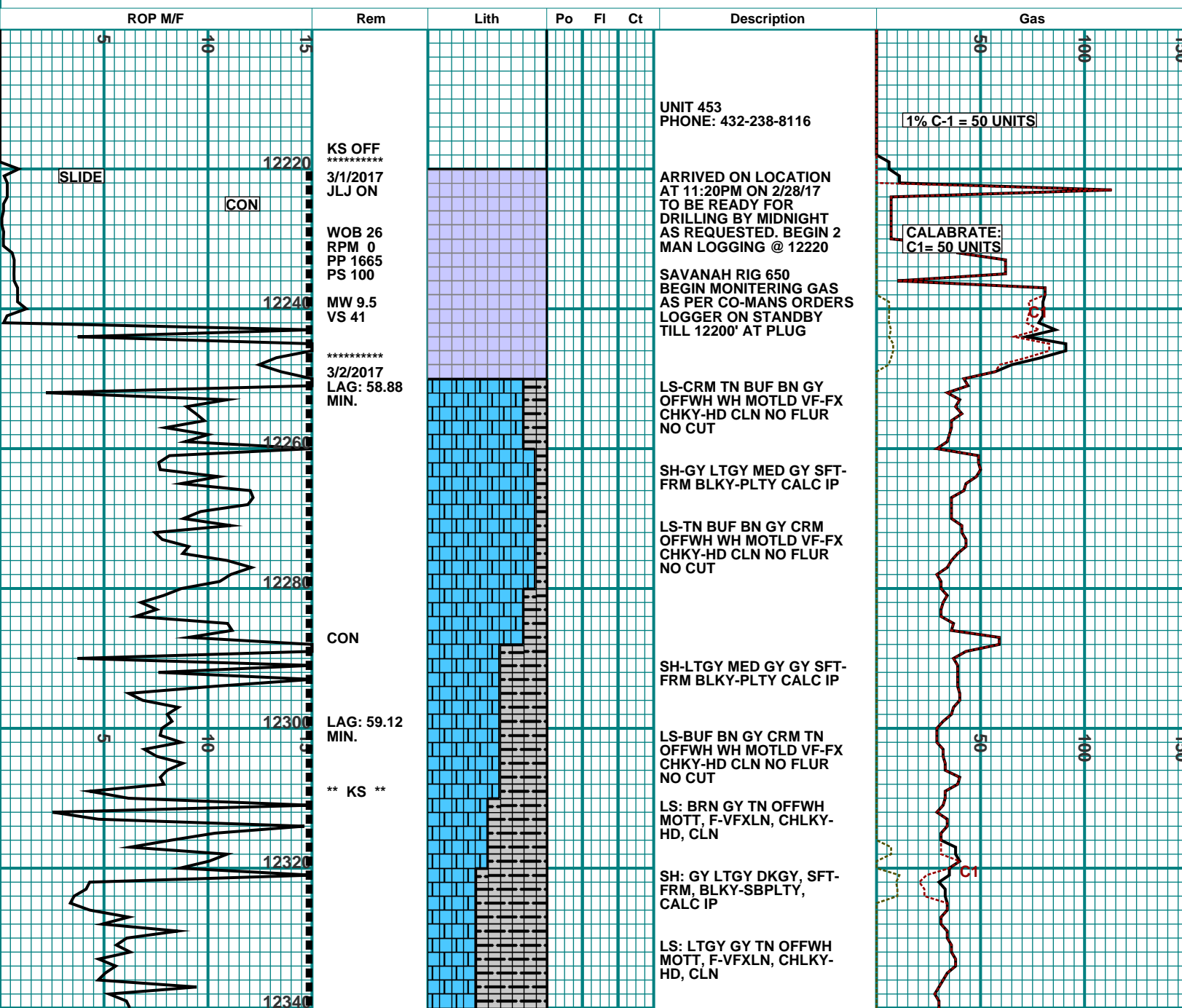
HYDROCARBON WELL LOGGING
GEOLOGICAL CONSULTING

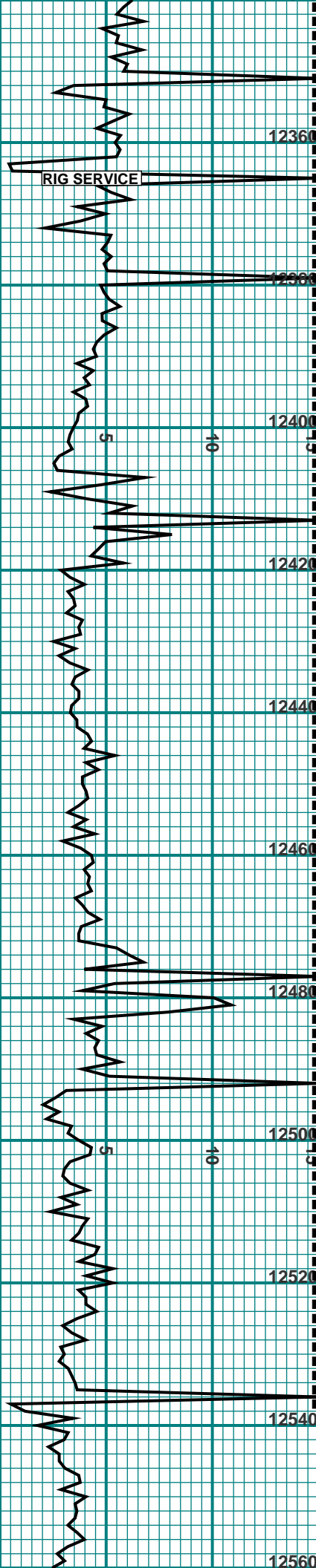
PO Box 10725, Midland, Tx. 79702
(432)687-3148 Fax(432)687-3157

- CO - Circulate Out
- CON - Connection
- DC - Depth Correction
- DS - Directional Survey
- LC - Lost Circulation
- NB - New Bit
- NR - No Returns
- WOB - Weight on Bit

Producer: RAZ OIL AND GAS	
Well Name: YO STATE SWD #1	
Location: SEC 15, T21S, R35E 660 FNL	
API: 30-025-38162	Permit:
Survey: 840 FWL	Field:
County,St: LEA COUNTY, NM.	
Logger1: KASEY STEVENS	Logger2: JAMES JOHNSON
Elevation (GL): 3587	(KB): 3603
Depth (Start): 12200	(End): 13968
Date (Start): 3/30/2017	(End): 4/12/2017
Unit #: 453	SLI Job#: 17052-17-052

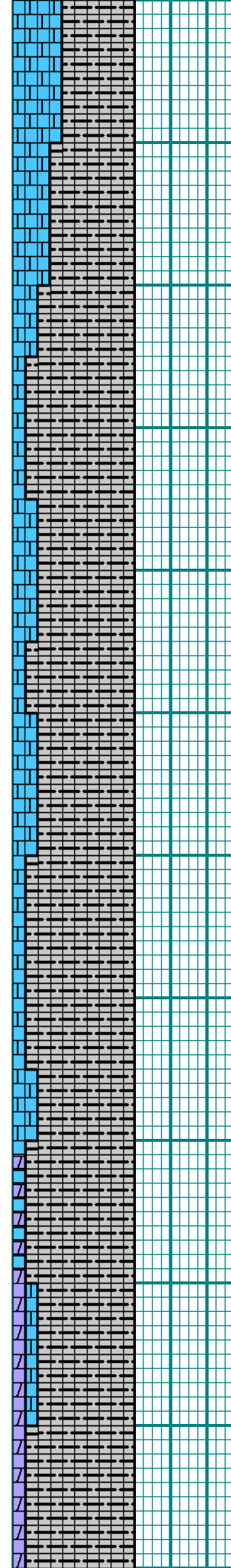
<ul style="list-style-type: none"> Cement Lime Stone Shale Dolomite 	<p style="text-align: right;">Total Gas </p> <p style="text-align: right;">Methane C1 </p> <p style="text-align: right;">Ethane C2 </p> <p style="text-align: right;">Propane C3 </p> <p style="text-align: right;">Butane C4 </p> <p style="text-align: right;">Pentane C5 </p>
---	---



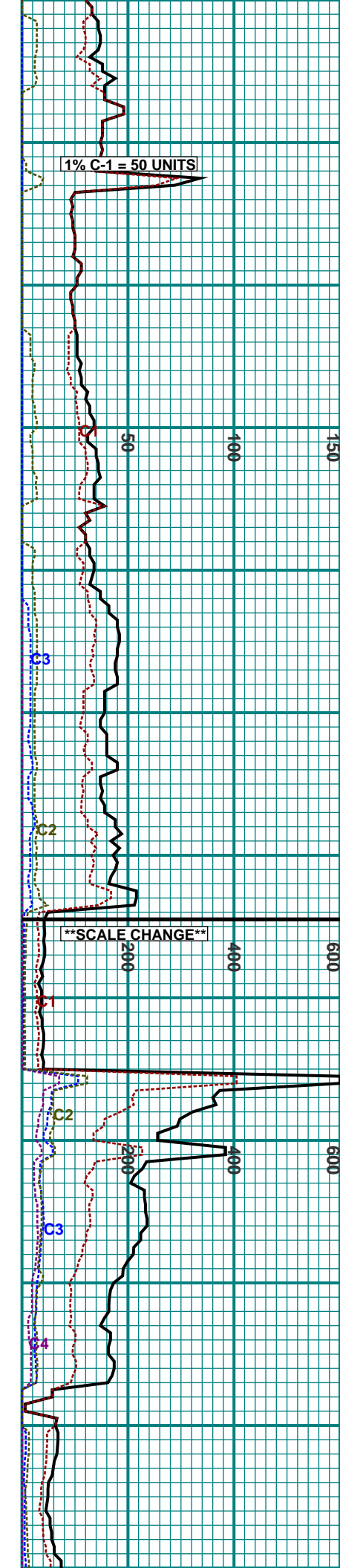


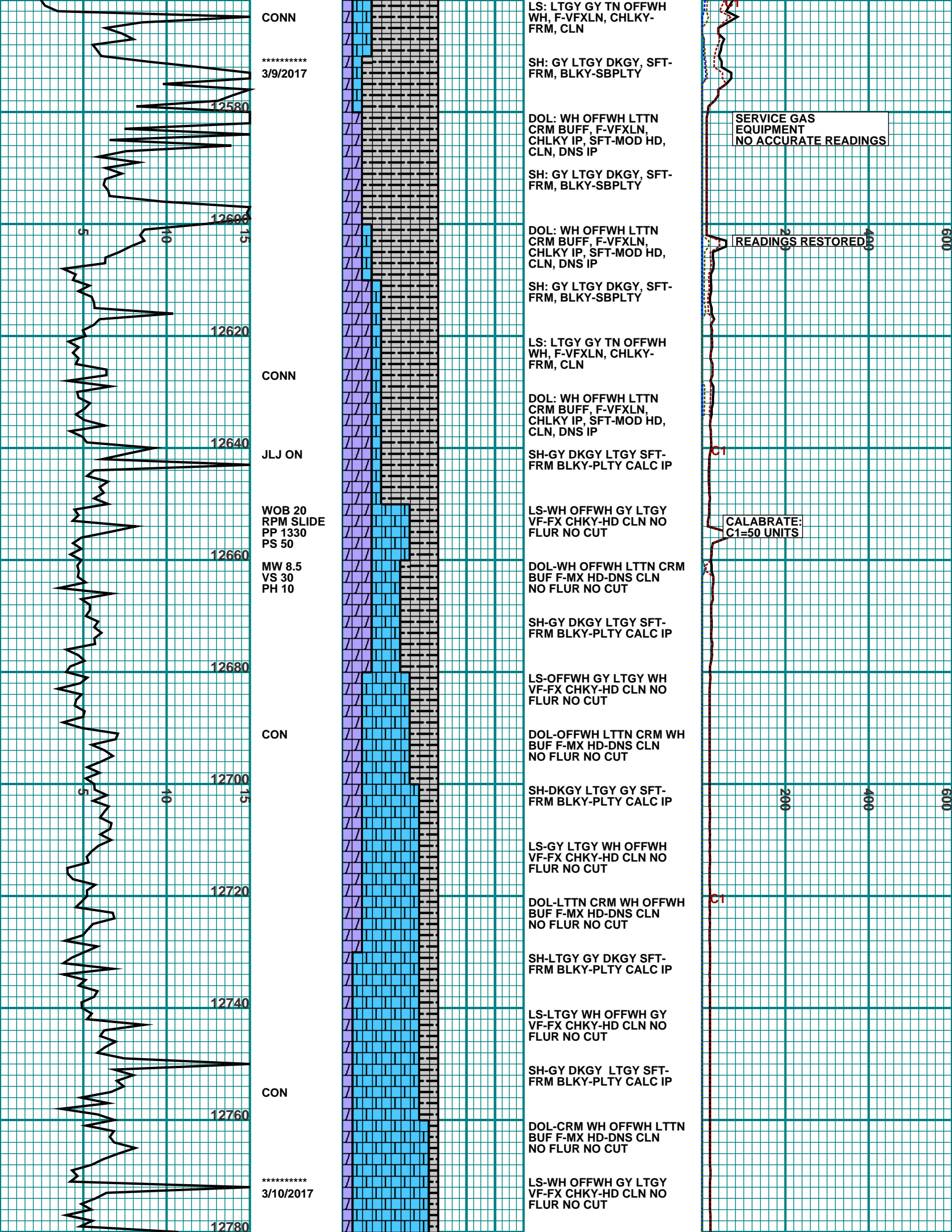
CONN
 12360
 LAG: 59.44 MIN. C/O 12365'
 RIG SERVICE
 12380
 C/O 12379'
 12400
 5 10 20 40 50 100 200 400 600
 CONN
 12420

 3/3/2017
 12440
 12460
 LAG: 60.01 MIN.
 CONN
 12480
 C/O
 12500
 5 10 20 40 50 100 200 400 600
 12520
 LAG: 60.32 *****
 3/8/2017
 3/7/2017
 JLJ ON
 BIT #2
 6.125"
 HF47-BH IN
 @ 12536
 ** KS **
 12540
 12560



SH: GY LTGY DKGY, SFT-FRM, BLKY-SBPLTY, CALC IP
 LS: LTGY GY TN OFFWH MOTT, F-VFXLN, CHLKY-HD, CLN
 SH: GY LTGY DKGY, SFT-FRM, BLKY-SBPLTY, CALC IP
 LS: LTGY GY TN OFFWH WH, F-VFXLN, CHLKY-FRM, CLN
 SH: GY LTGY DKGY, SFT-FRM, BLKY-SBPLTY
 LS: LTGY GY TN OFFWH WH, F-VFXLN, CHLKY-FRM, CLN
 SH: GY LTGY DKGY, SFT-FRM, BLKY-SBPLTY
 LS: LTGY GY TN OFFWH WH, F-VFXLN, CHLKY-FRM, CLN
 SH: GY LTGY DKGY, SFT-FRM, BLKY-SBPLTY
 LS: LTGY GY TN OFFWH WH, F-VFXLN, CHLKY-FRM, CLN
 SH: GY LTGY DKGY, SFT-FRM, BLKY-SBPLTY
 LS: LTGY GY TN OFFWH WH, F-VFXLN, CHLKY-FRM, CLN
 SH: GY LTGY DKGY, SFT-FRM, BLKY-SBPLTY
 LS: LTGY GY TN OFFWH WH, F-VFXLN, CHLKY-FRM, CLN
 SH: GY LTGY DKGY, SFT-FRM, BLKY-SBPLTY
 C/O TO CHECK FORMATION FOR DOLOMITE(DEVONIAN MARKER) CONTINUE AHEAD AFTER C/O
 DOL: WH OFFWH LTTN CRM BUFF, F-VFXLN, CHLKY IP, SFT-MOD HD, CLN, DNS IP
 LS: LTGY GY TN OFFWH WH, F-VFXLN, CHLKY-FRM, CLN
 SH: GY LTGY DKGY, SFT-FRM, BLKY-SBPLTY
 TD AT 12536' FOR INTERMEDIATE CASING, LOGGERS OFF LOCATION
 DOL: WH OFFWH LTTN CRM BUFF, F-VFXLN, CHLKY IP, SFT-MOD HD, CLN, DNS IP
 SH: GY LTGY DKGY, SFT-FRM, BLKY-SBPLTY





CONN

3/9/2017

12580

12600

12620

CONN

12640

JLJ ON

12660

WOB 20
RPM SLIDE
PP 1330
PS 50

MW 8.5
VS 30
PH 10

12680

CON

12700

12720

12740

CON

12760

3/10/2017

12780

LS: LTGY GY TN OFFWH
WH, F-VFXLN, CHLKY-
FRM, CLN

SH: GY LTGY DKGY, SFT-
FRM, BLKY-SBPLTY

DOL: WH OFFWH LTTN
CRM BUFF, F-VFXLN,
CHLKY IP, SFT-MOD HD,
CLN, DNS IP

SH: GY LTGY DKGY, SFT-
FRM, BLKY-SBPLTY

DOL: WH OFFWH LTTN
CRM BUFF, F-VFXLN,
CHLKY IP, SFT-MOD HD,
CLN, DNS IP

SH: GY LTGY DKGY, SFT-
FRM, BLKY-SBPLTY

LS: LTGY GY TN OFFWH
WH, F-VFXLN, CHLKY-
FRM, CLN

DOL: WH OFFWH LTTN
CRM BUFF, F-VFXLN,
CHLKY IP, SFT-MOD HD,
CLN, DNS IP

SH-GY DKGY LTGY SFT-
FRM BLKY-PLTY CALC IP

LS-WH OFFWH GY LTGY
VF-FX CHKY-HD CLN NO
FLUR NO CUT

DOL-WH OFFWH LTTN CRM
BUF F-MX HD-DNS CLN
NO FLUR NO CUT

SH-GY DKGY LTGY SFT-
FRM BLKY-PLTY CALC IP

LS-OFFWH GY LTGY WH
VF-FX CHKY-HD CLN NO
FLUR NO CUT

DOL-OFFWH LTTN CRM WH
BUF F-MX HD-DNS CLN
NO FLUR NO CUT

SH-DKGY LTGY GY SFT-
FRM BLKY-PLTY CALC IP

LS-GY LTGY WH OFFWH
VF-FX CHKY-HD CLN NO
FLUR NO CUT

DOL-LTTN CRM WH OFFWH
BUF F-MX HD-DNS CLN
NO FLUR NO CUT

SH-LTGY GY DKGY SFT-
FRM BLKY-PLTY CALC IP

LS-LTGY WH OFFWH GY
VF-FX CHKY-HD CLN NO
FLUR NO CUT

SH-GY DKGY LTGY SFT-
FRM BLKY-PLTY CALC IP

DOL-CRM WH OFFWH LTTN
BUF F-MX HD-DNS CLN
NO FLUR NO CUT

LS-WH OFFWH GY LTGY
VF-FX CHKY-HD CLN NO
FLUR NO CUT

SERVICE GAS
EQUIPMENT
NO ACCURATE READINGS

READINGS RESTORED

CALABRATE:
C1=50 UNITS

C1

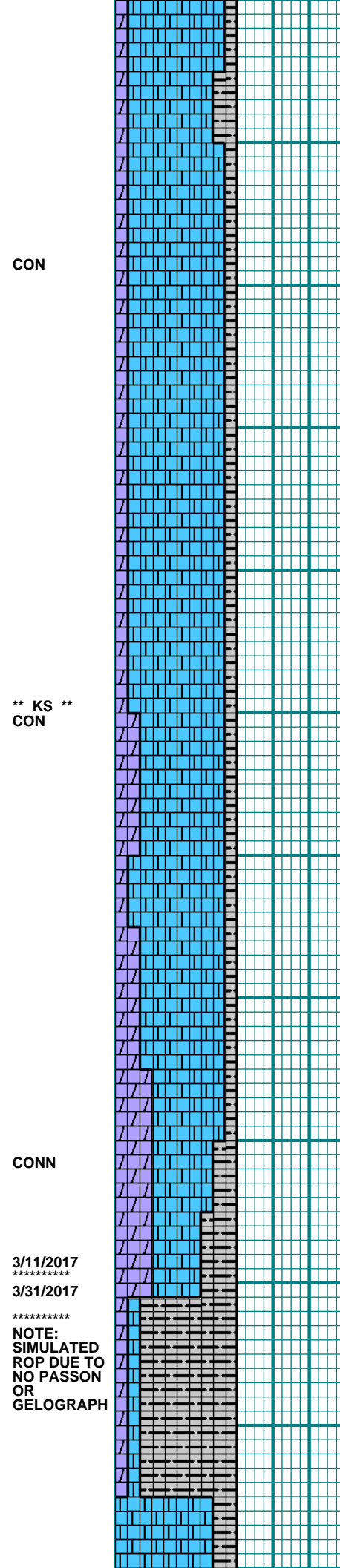
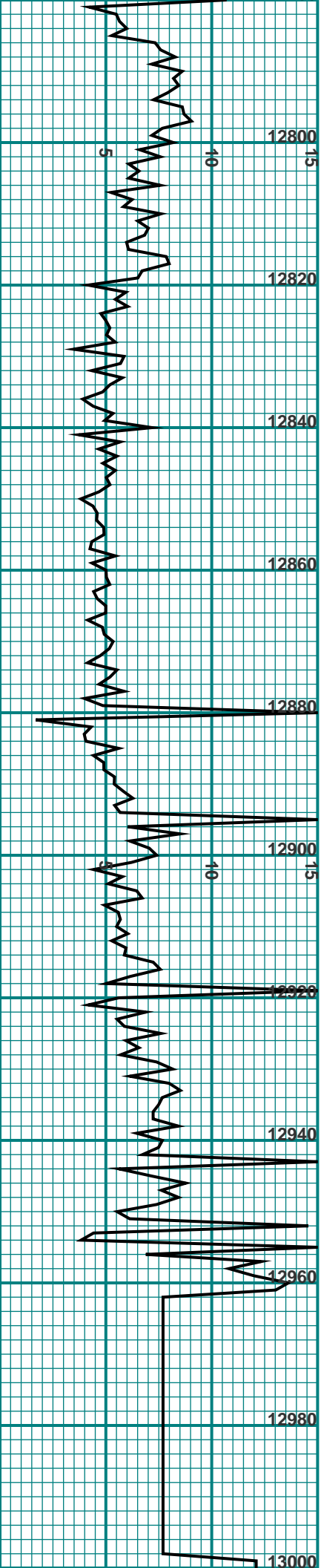
C1

200

400

600

600



SH-DKGY LTGY GY SFT-FRM BLKY-PLTY CALC IP

DOL-WH OFFFWH LTTN CRM BUF F-MX HD-DNS CLN NO FLUR NO CUT

LS-OFFFWH GY LTGY WH VF-FX CHKY-HD CLN NO FLUR NO CUT

SH-LTGY GY DKGY SFT-FRM BLKY-PLTY CALC IP

DOL-OFFFWH LTTN CRM WH BUF F-MX HD-DNS CLN NO FLUR NO CUT

LS-GY LTGY WH OFFFWH VF-FX CHKY-HD CLN NO FLUR NO CUT

SH-GY DKGY LTGY SFT-FRM BLKY-PLTY CALC IP

DOL-LTTN CRM WH OFFFWH BUF F-MX HD-DNS CLN NO FLUR NO CUT

LS-LTGY WH OFFFWH GY VF-FX CHKY-HD CLN NO FLUR NO CUT

SH-DKGY LTGY GY SFT-FRM BLKY-PLTY CALC IP

DOL: WH OFFFWH CRM BUFF LTTN, MED-FXLN, HD, DNS, CLN

SH: LTGY GY DKGY, SBBLKY-SBPLTY, FRM, CALC IP

LS: LTGY OFFFWH WH GY F-VFXLN, CHLKY-HD, CLN

DOL: WH OFFFWH CRM BUFF LTTN, MED-FXLN, HD, DNS, CLN

SH: LTGY GY DKGY, SBBLKY-SBPLTY, FRM, CALC IP

LS: LTGY OFFFWH WH GY F-VFXLN, CHLKY-HD, CLN

*** ** ** ** **

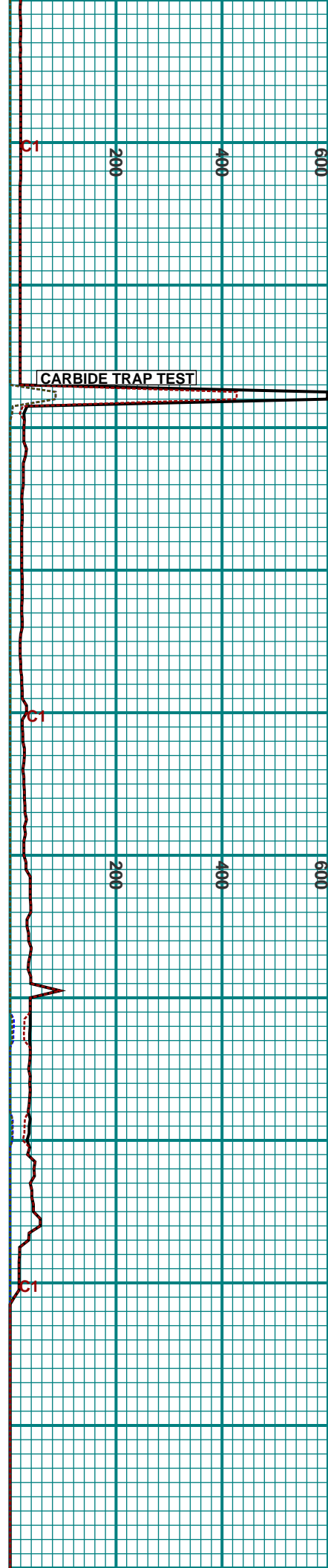
TD @ 12962' ON 3/10/17 RELEASED 3/11/17 AM AFTER B/U AND RIG DOWN AS PER CO-MAN REQUEST. THANK YOU FOR USING SUTTLES LOGGING. *** ** ** ** **

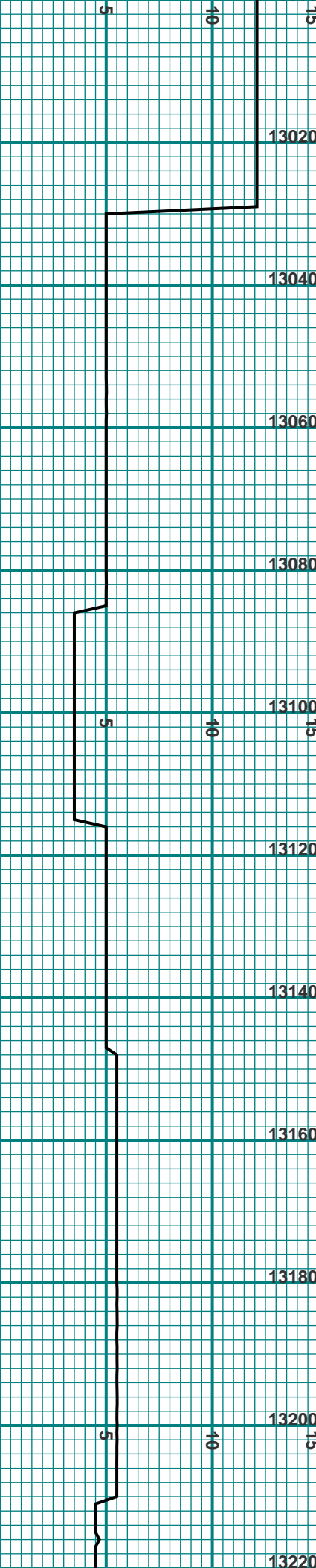
START 2 MAN LOGGING @ 12962 TO DEEPEN WELL 3/30/2017 DRILLING WITH PULLING UNIT. *****

NOTE: NO GAS READINGS DUE TO SHAKER HAS NO WAY TO USE GAS CATCHER. *****

USING LAG OF 79 MIN

LS-CRM TN BUF LTBN MOTLD OFFFWH LTGY VF-FX CHKY-HD CLN NO FLUR NO CUR





13020

4/1/2017

4/7/2017

BIT #2
6 1/4"
ULTERRA
U613M IN
@ 13030

WOB 7K
RPM 90
PP 290

CON

13060

MW 9.5
VS 40

LAG 76 MIN

13080

CON

13100

CON

13120

CON

13140

CON

13160

CON

13180

CON

4/8/2017

13200

LAG 77 MIN

CON

13220

SH-GY LTGY DKGY BN
SFT-FRM BLKY-PLTY
CALC IP

TOOH @ 13030 TO PICK
UP MORE COLLARS FOR
BHA 4/1/2017
GOT STUCK TRIPPING
OUT.

4/6/2017: LOGGER ON
LOCATION.

SH-BN LTBN GY DKGY
GYBN SFT-FRM BLKY-
PLTY CALC IP TR FREE
PYR XLS

LS-WH OFFWH CRM TN BUF
VF-FX CHKY-HD CLN NO
FLUR NO CUT

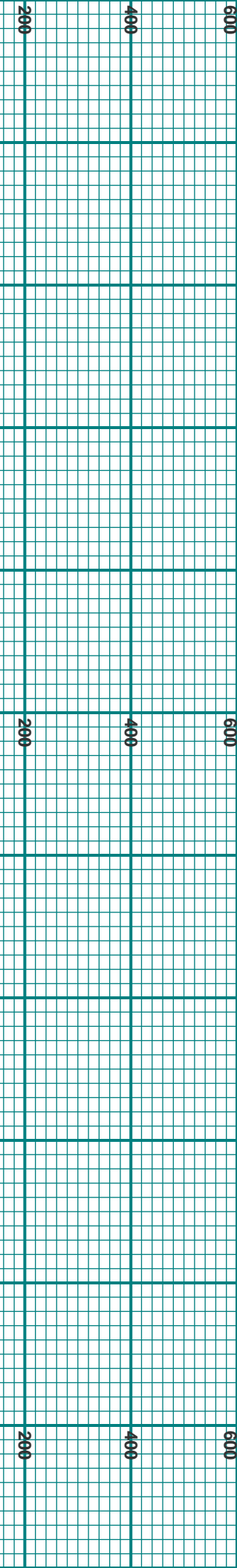
LS-TN BUF OFFWH CRM
WH VF-FX CHKY-HD CLN
NO FLUR NO CUT

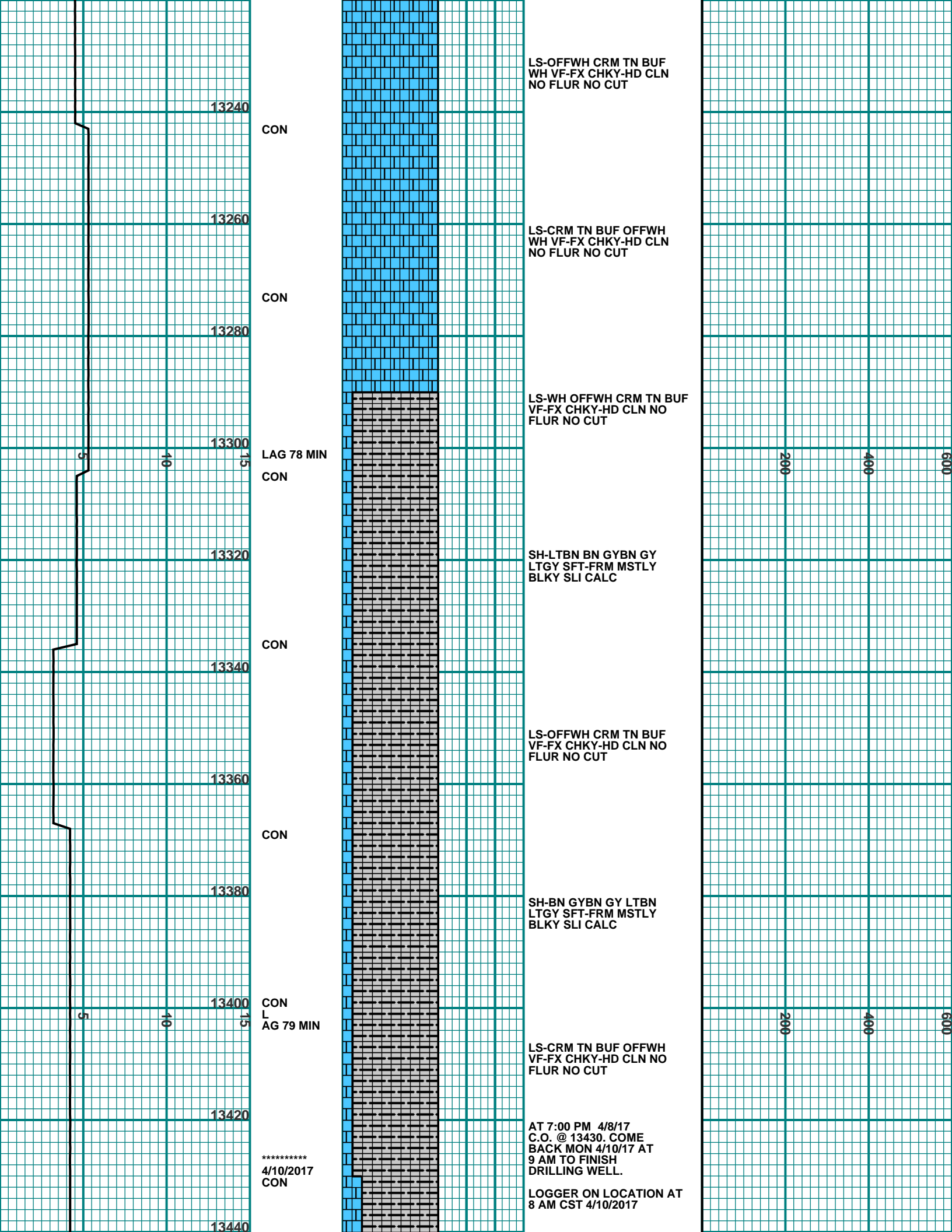
LS-OFFWH CRM TN BUF
WH VF-FX CHKY-HD CLN
NO FLUR NO CUT

LS-CRM TN BUF OFFWH
WH VF-FX CHKY-HD CLN
NO FLUR NO CUT

LS-WH OFFWH CRM TN BUF
VF-FX CHKY-HD CLN NO
FLUR NO CUT

LS-TN BUF OFFWH CRM
WH VF-FX CHKY-HD CLN
NO FLUR NO CUT





13240

CON

LS-OFFWH CRM TN BUF
WH VF-FX CHKY-HD CLN
NO FLUR NO CUT

13260

CON

LS-CRM TN BUF OFFWH
WH VF-FX CHKY-HD CLN
NO FLUR NO CUT

13280

13300

LAG 78 MIN
CON

LS-WH OFFWH CRM TN BUF
VF-FX CHKY-HD CLN NO
FLUR NO CUT

13320

CON

SH-LTBN BN GYBN GY
LTGY SFT-FRM MSTLY
BLKY SLI CALC

13340

13360

CON

LS-OFFWH CRM TN BUF
VF-FX CHKY-HD CLN NO
FLUR NO CUT

13380

13400

CON
LAG 79 MIN

SH-BN GYBN GY LTBN
LTGY SFT-FRM MSTLY
BLKY SLI CALC

13420

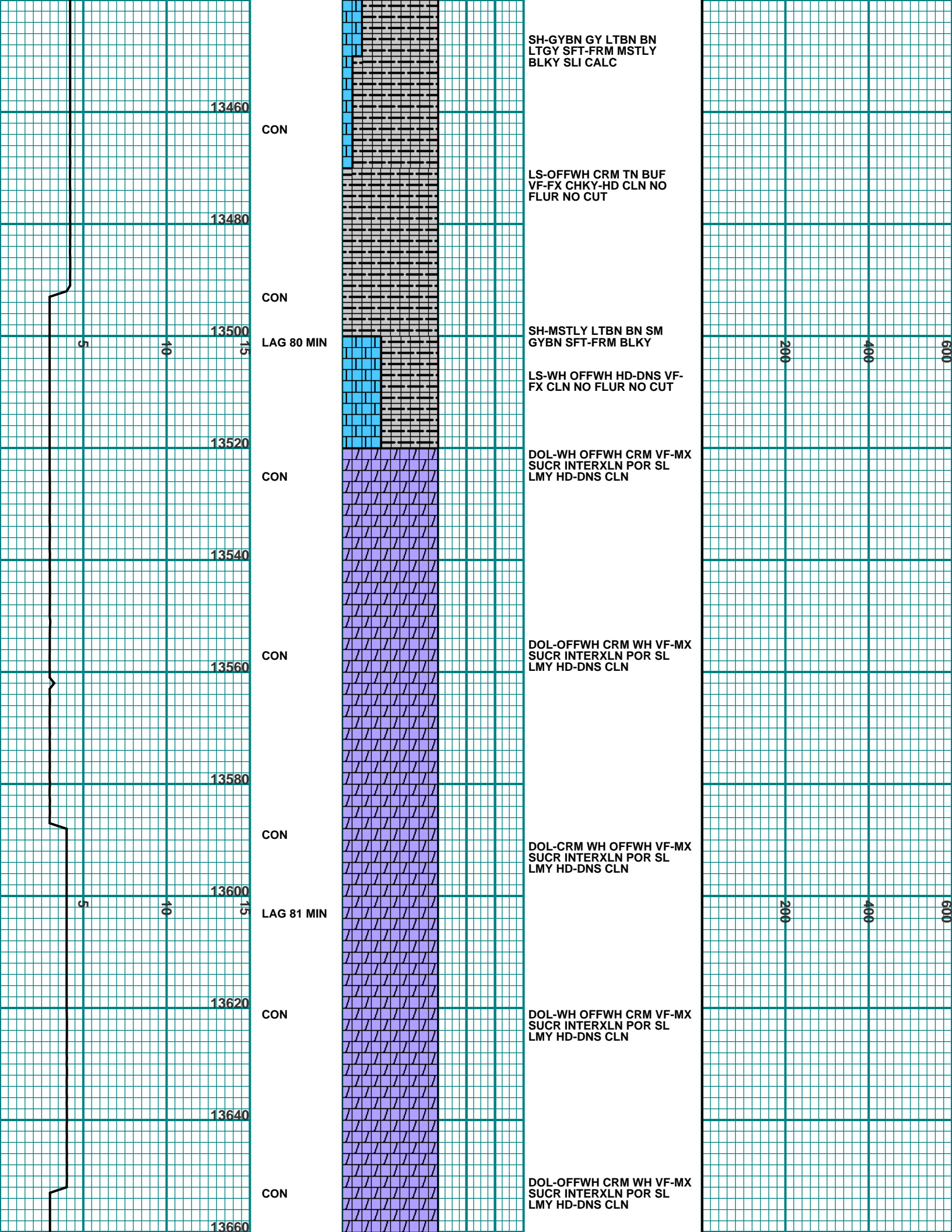
LS-CRM TN BUF OFFWH
VF-FX CHKY-HD CLN NO
FLUR NO CUT

4/10/2017
CON

AT 7:00 PM 4/8/17
C.O. @ 13430. COME
BACK MON 4/10/17 AT
9 AM TO FINISH
DRILLING WELL.

LOGGER ON LOCATION AT
8 AM CST 4/10/2017

13440



13460

CON

SH-GYBN GY LTBN BN
LTGY SFT-FRM MSTLY
BLKY SLI CALC

13480

CON

LS-OFFWH CRM TN BUF
VF-FX CHKY-HD CLN NO
FLUR NO CUT

13500

LAG 80 MIN

SH-MSTLY LTBN BN SM
GYBN SFT-FRM BLKY

13520

CON

LS-WH OFFWH HD-DNS VF-
FX CLN NO FLUR NO CUT

DOL-WH OFFWH CRM VF-MX
SUCR INTERXLN POR SL
LMY HD-DNS CLN

13540

CON

DOL-OFFWH CRM WH VF-MX
SUCR INTERXLN POR SL
LMY HD-DNS CLN

13580

CON

DOL-CRM WH OFFWH VF-MX
SUCR INTERXLN POR SL
LMY HD-DNS CLN

13600

LAG 81 MIN

DOL-WH OFFWH CRM VF-MX
SUCR INTERXLN POR SL
LMY HD-DNS CLN

13620

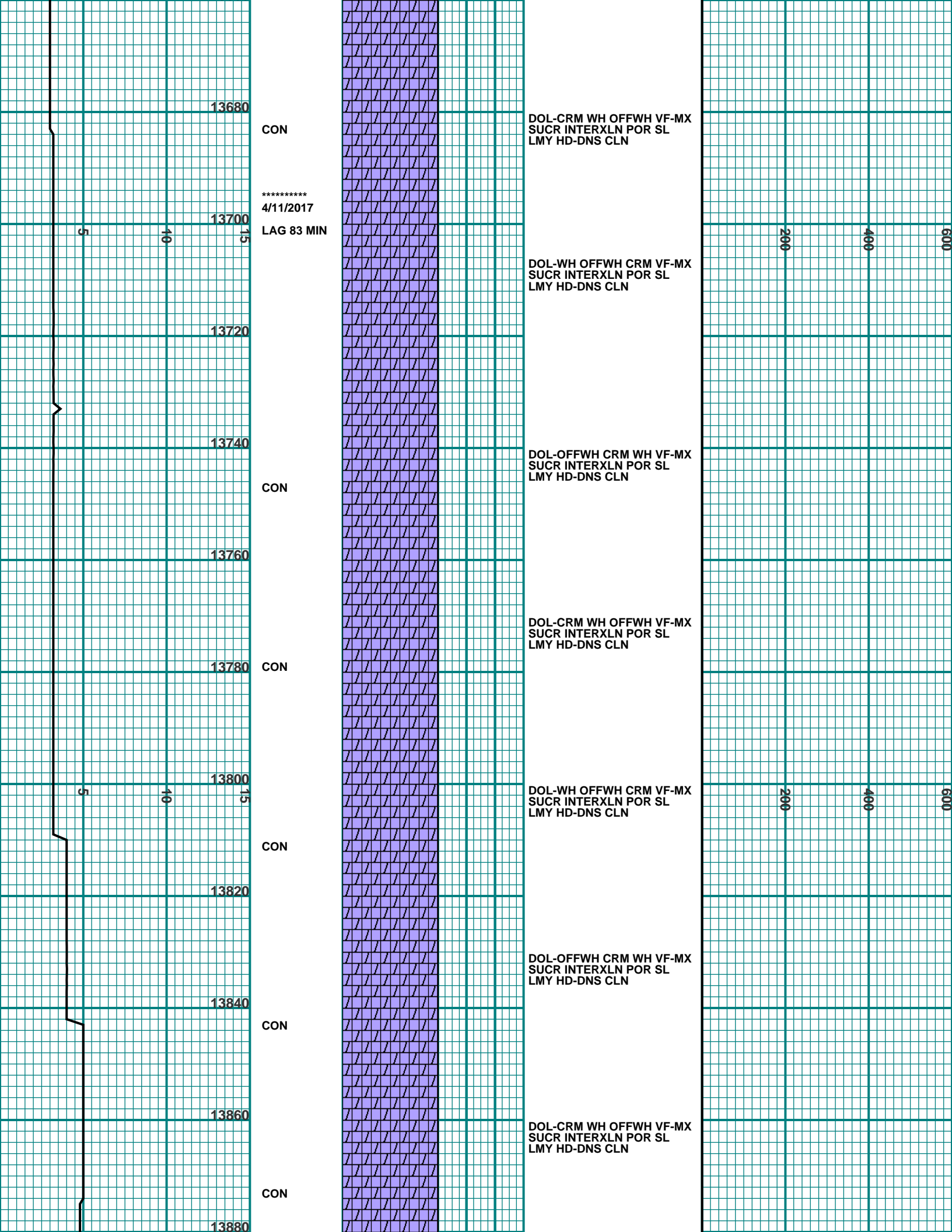
CON

DOL-OFFWH CRM WH VF-MX
SUCR INTERXLN POR SL
LMY HD-DNS CLN

13640

CON

13660



13680

CON

DOL-CRM WH OFFFWH VF-MX
SUCR INTERXLN POR SL
LMY HD-DNS CLN

4/11/2017
LAG 83 MIN

13700

5

10

13720

DOL-WH OFFFWH CRM VF-MX
SUCR INTERXLN POR SL
LMY HD-DNS CLN

200

400

600

13740

CON

DOL-OFFFWH CRM WH VF-MX
SUCR INTERXLN POR SL
LMY HD-DNS CLN

13760

DOL-CRM WH OFFFWH VF-MX
SUCR INTERXLN POR SL
LMY HD-DNS CLN

13780

CON

DOL-WH OFFFWH CRM VF-MX
SUCR INTERXLN POR SL
LMY HD-DNS CLN

200

400

600

13800

5

10

13820

CON

DOL-OFFFWH CRM WH VF-MX
SUCR INTERXLN POR SL
LMY HD-DNS CLN

13840

CON

13860

DOL-CRM WH OFFFWH VF-MX
SUCR INTERXLN POR SL
LMY HD-DNS CLN

13880

CON

13900

LAG 85 MIN
CON

DOL-WH OFFFWH CRM VF-MX
SUCR INTERXLN POR SL
LMY HD-DNS CLN

200

400

600

13920

13940

CON

4/12/2017

DOL-OFFFWH CRM WH VF-MX
SUCR INTERXLN POR SL
LMY HD-DNS CLN

SH-BK DKGY BN DKBN
FRM-HD PLTY-BLKY

13960

LAG:
85.49 MIN

TD 13968
C.O. AND PRPARE TO
RUN CASING.
THANKS FOR USING
SUTTLES LOGGING, INC.

0

0

0