

District I
1625 N. French Dr., Hobbs, NM 88240
Phone: (575) 393-6161 Fax: (575) 393-0720
District II
811 S. First St., Artesia, NM 88210
Phone: (575) 748-1283 Fax: (575) 748-9720
District III
1000 Rio Brazos Road, Aztec, NM 87410
Phone: (505) 334-6178 Fax: (505) 334-6170
District IV
1220 S. St. Francis Dr., Santa Fe, NM 87505
Phone: (505) 476-3460 Fax: (505) 476-3462

State of New Mexico
Energy, Minerals & Natural Resources
Department
OIL CONSERVATION DIVISION
1220 South St. Francis Dr.
Santa Fe, NM 87505

FORM C-102

Revised August 1, 2011

Submit one copy to appropriate
District Office

AMENDED REPORT

WELL LOCATION AND ACREAGE DEDICATION PLAT

| | | | | | |
|---|--|--|--|---|----------------------------------|
| ¹ API Number 30-015-46893 | | ² Pool Code 98315 | | ³ Pool Name WC Burton Flat East; Upper Wolfcamp | |
| ⁴ Property Code 326053 | | ⁵ Property Name LEATHERNECK 3029 FED COM | | | ⁶ Well Number 224H |
| ⁷ OGRID No. 228937 | | ⁸ Operator Name MATADOR PRODUCTION COMPANY | | | ⁹ Elevation 3235' |

¹⁰Surface Location

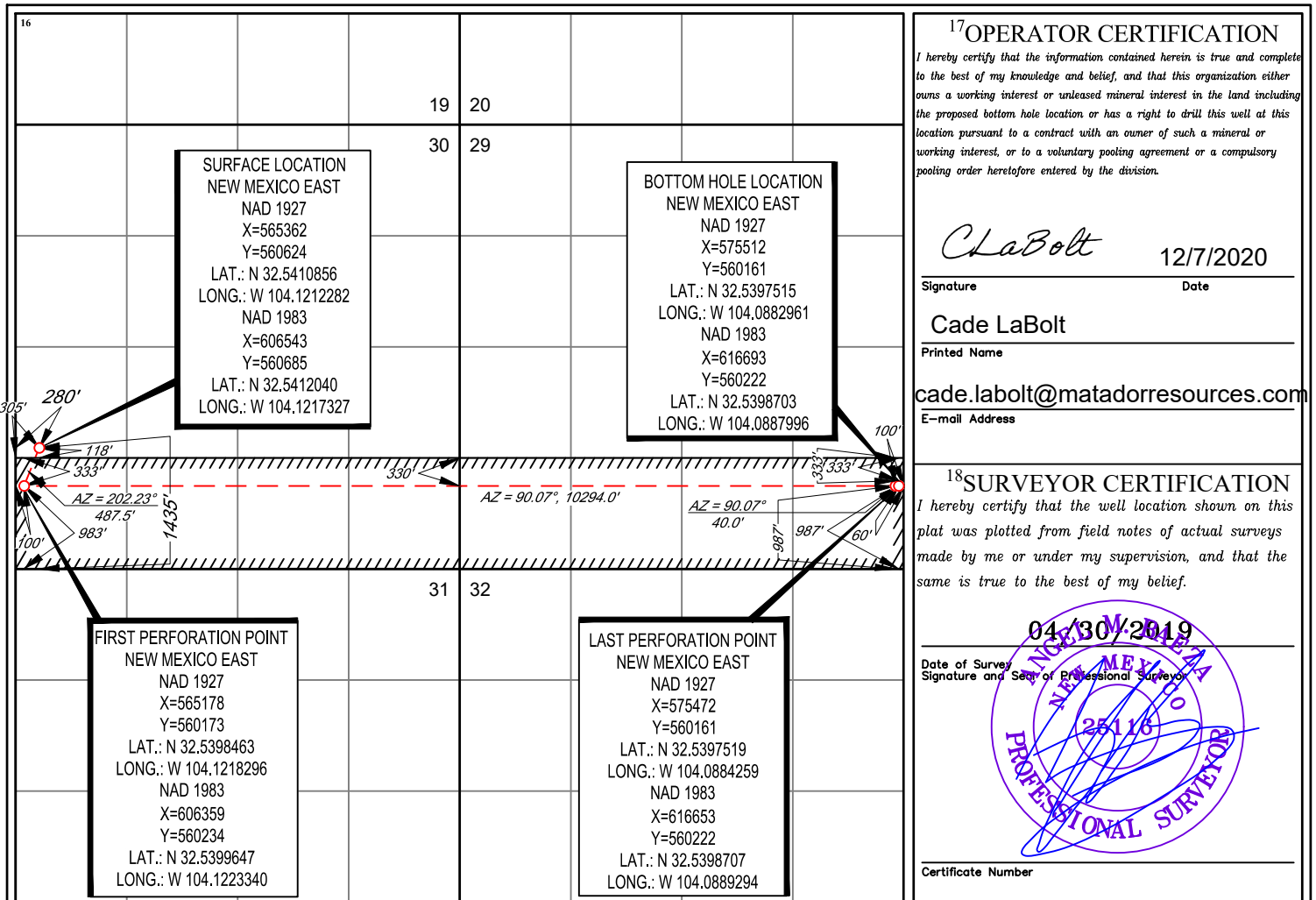
| UL or lot no. | Section | Township | Range | Lot Idn | Feet from the | North/South line | Feet from the | East/West line | County |
|---------------|---------|----------|-------|---------|---------------|------------------|---------------|----------------|--------|
| 3 | 30 | 20-S | 29-E | - | 1435' | SOUTH | 280' | WEST | EDDY |

¹¹Bottom Hole Location If Different From Surface

| UL or lot no. | Section | Township | Range | Lot Idn | Feet from the | North/South line | Feet from the | East/West line | County |
|---------------|---------|----------|-------|---------|---------------|------------------|---------------|----------------|--------|
| P | 29 | 20-S | 29-E | - | 987' | SOUTH | 60' | EAST | EDDY |

| | | | |
|---|-------------------------------|----------------------------------|-------------------------|
| ¹² Dedicated Acres 317.82 | ¹³ Joint or Infill | ¹⁴ Consolidation Code | ¹⁵ Order No. |
|---|-------------------------------|----------------------------------|-------------------------|

No allowable will be assigned to this completion until all interests have been consolidated or a non-standard unit has been approved by the division.



District I
1625 N. French Dr., Hobbs, NM 88240
Phone: (575) 393-6161 Fax: (575) 393-0720
District II
811 S. First St., Artesia, NM 88210
Phone: (575) 748-1283 Fax: (575) 748-9720
District III
1000 Rio Brazos Road, Aztec, NM 87410
Phone: (505) 334-6178 Fax: (505) 334-6170
District IV
1220 S. St. Francis Dr., Santa Fe, NM 87505
Phone: (505) 476-3460 Fax: (505) 476-3462

State of New Mexico
Energy, Minerals & Natural Resources
Department
OIL CONSERVATION DIVISION
1220 South St. Francis Dr.
Santa Fe, NM 87505

FORM C-102
Revised August 1, 2011
Submit one copy to appropriate
District Office

AMENDED REPORT

WELL LOCATION AND ACREAGE DEDICATION PLAT

| | | | | | | |
|----------------------------|--|--|--|------------------------|----------------------------------|--|
| ¹ API Number | | ² Pool Code | | ³ Pool Name | | |
| ⁴ Property Code | | ⁵ Property Name LEATHERNECK 3029 FED COM | | | ⁶ Well Number 224H | |
| ⁷ OGRID No. | | ⁸ Operator Name MATADOR PRODUCTION COMPANY | | | ⁹ Elevation 3235' | |

¹⁰Surface Location

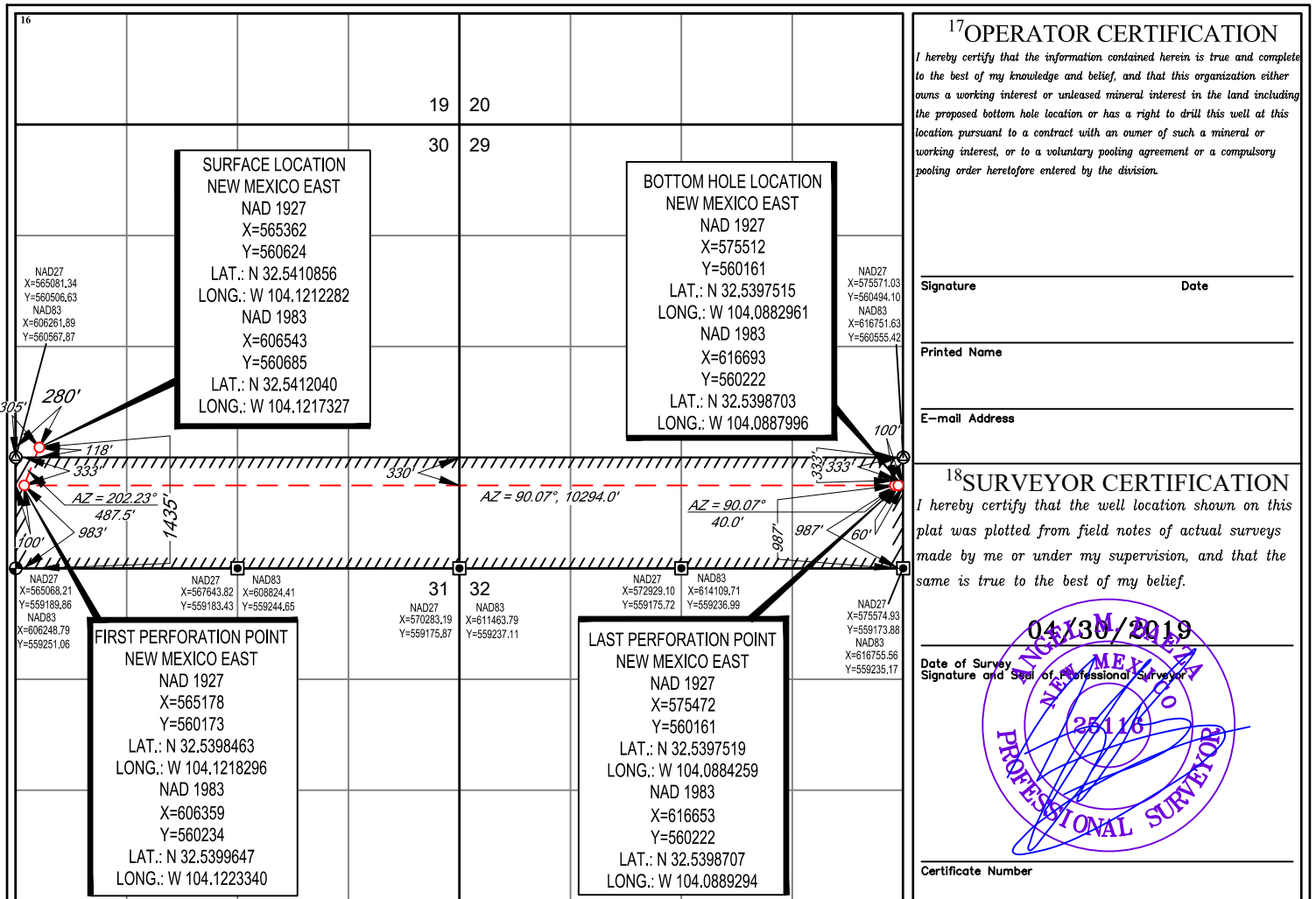
| UL or lot no. | Section | Township | Range | Lot Idn | Feet from the | North/South line | Feet from the | East/West line | County |
|---------------|---------|----------|-------|---------|---------------|------------------|---------------|----------------|--------|
| 3 | 30 | 20-S | 29-E | - | 1435' | SOUTH | 280' | WEST | EDDY |

¹¹Bottom Hole Location If Different From Surface

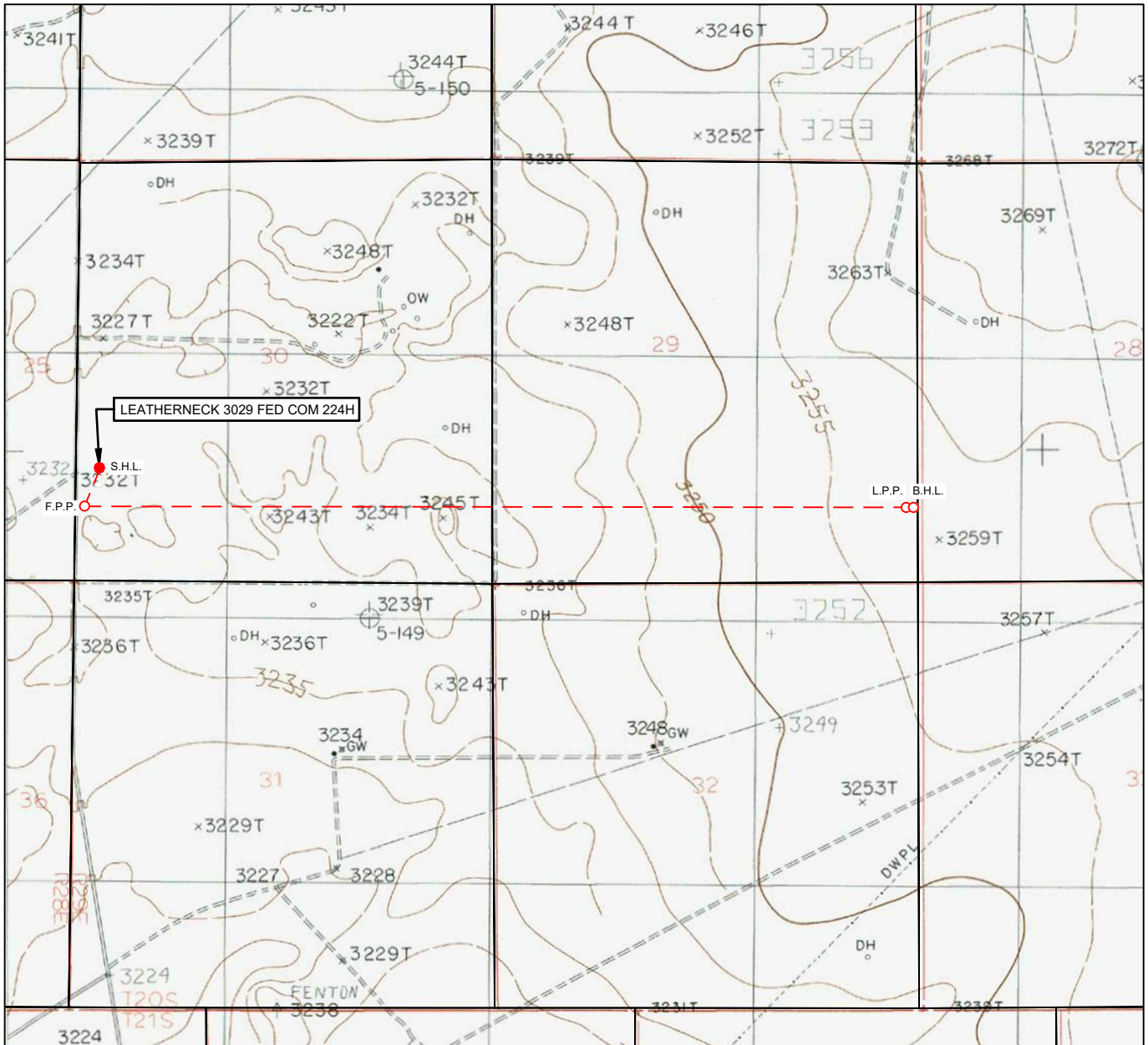
| UL or lot no. | Section | Township | Range | Lot Idn | Feet from the | North/South line | Feet from the | East/West line | County |
|---------------|---------|----------|-------|---------|---------------|------------------|---------------|----------------|--------|
| P | 29 | 20-S | 29-E | - | 987' | SOUTH | 60' | EAST | EDDY |

| | | | |
|---|-------------------------------|----------------------------------|-------------------------|
| ¹² Dedicated Acres 317.82 | ¹³ Joint or Infill | ¹⁴ Consolidation Code | ¹⁵ Order No. |
|---|-------------------------------|----------------------------------|-------------------------|

No allowable will be assigned to this completion until all interests have been consolidated or a non-standard unit has been approved by the division.



LOCATION & ELEVATION VERIFICATION MAP



LEASE NAME & WELL NO.: LEATHERNECK 3029 FED COM 224H

SECTION 30 TWP 20-S RGE 29-E SURVEY N.M.P.M.
 COUNTY EDDY STATE NM ELEVATION 3235'
 DESCRIPTION 1435' FSL & 280' FWL

LATITUDE N 32.5412040 LONGITUDE W 104.1217327



SCALE: 1" = 2000'
 0' 1000' 2000'

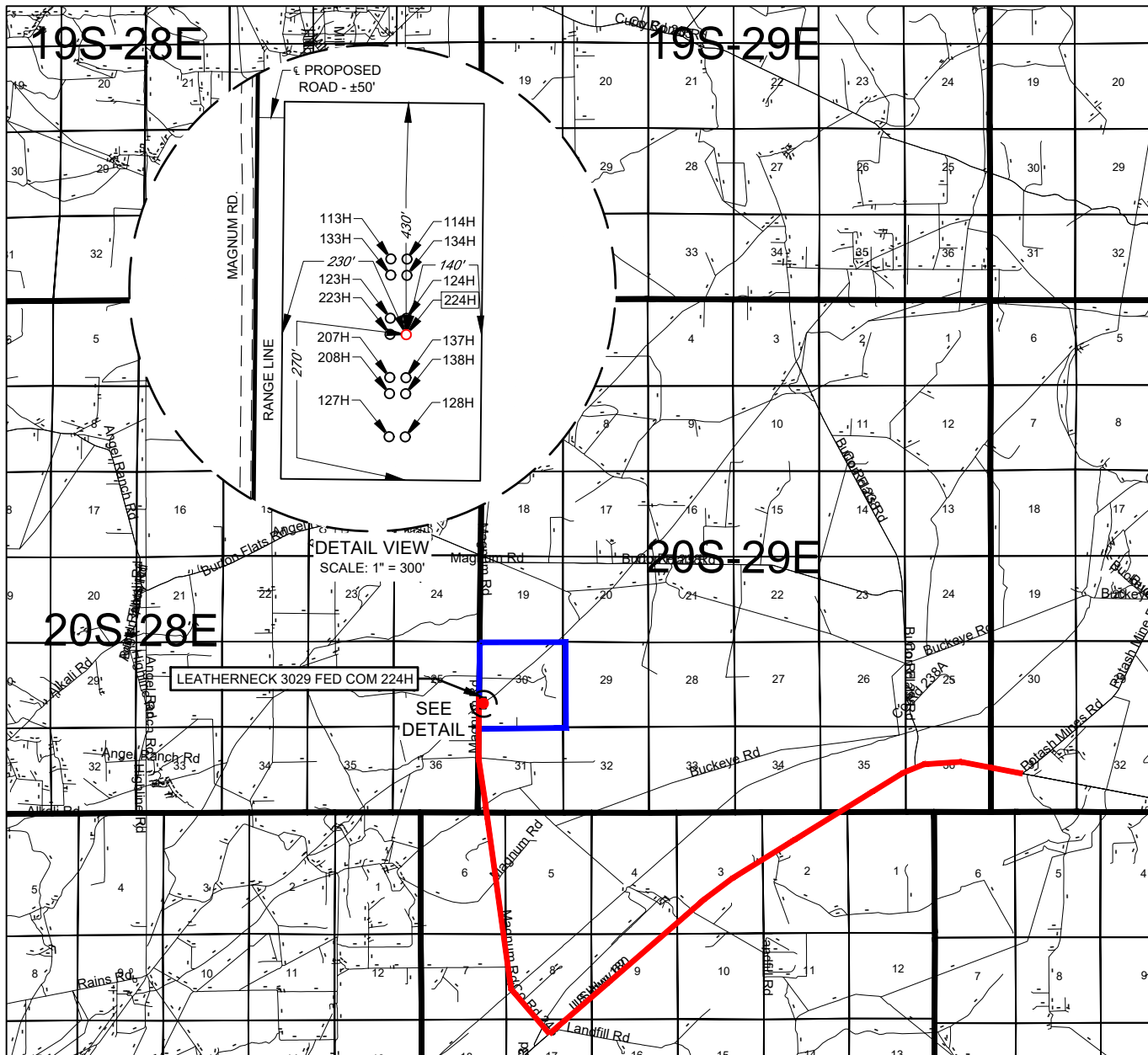
THIS EASEMENT/SERVITUDE LOCATION SHOWN HEREON HAS BEEN SURVEYED ON THE GROUND UNDER MY SUPERVISION AND PREPARED ACCORDING TO THE EVIDENCE FOUND AT THE TIME OF SURVEY, AND DATA PROVIDED BY MATADOR PRODUCTION COMPANY. THIS CERTIFICATION IS MADE AND LIMITED TO THOSE PERSONS OR ENTITIES SHOWN ON THE FACE OF THIS PLAT AND IS NON-TRANSFERABLE. THIS SURVEY IS CERTIFIED FOR THIS TRANSACTION ONLY.

ALL BEARINGS, DISTANCES, AND COORDINATE VALUES CONTAINED HEREON ARE GRID BASED UPON THE NEW MEXICO COORDINATE SYSTEM OF 1983, EAST ZONE, U.S. SURVEY FEET.



1400 EVERMAN PARKWAY, Ste. 146 • FT. WORTH, TEXAS 76140
 TELEPHONE: (817) 744-7512 • FAX (817) 744-7554
 2903 NORTH BIG SPRING • MIDLAND, TEXAS 79705
 TELEPHONE: (432) 682-1653 OR (800) 767-1653 • FAX (432) 682-1743
 WWW.TOPOGRAPHIC.COM

VICINITY MAP



LEASE NAME & WELL NO.: LEATHERNECK 3029 FED COM 224H

SECTION 30 TWP 20-S RGE 29-E SURVEY N.M.P.M.
 COUNTY EDDY STATE NM
 DESCRIPTION 1435' FSL & 280' FWL

DISTANCE & DIRECTION

FROM INT. OF NM-360 & US-180/US-62 GO WEST ON US-180/US-62 ±6.8
MILES, THENCE NORTH (RIGHT) ON MAGNUM RD. ±4.3 MILES, THENCE
EAST (RIGHT) ON PROPOSED RD. ±50 FEET TO A POINT ±461 FEET
NORTHWEST OF THE LOCATION.

THIS EASEMENT/SERVITUDE LOCATION SHOWN HEREON HAS BEEN SURVEYED ON THE GROUND UNDER MY SUPERVISION AND PREPARED ACCORDING TO THE EVIDENCE FOUND AT THE TIME OF SURVEY, AND DATA PROVIDED BY MATADOR PRODUCTION COMPANY. THIS CERTIFICATION IS MADE AND LIMITED TO THOSE PERSONS OR ENTITIES SHOWN ON THE FACE OF THIS PLAT AND IS NON-TRANSFERABLE. THIS SURVEY IS CERTIFIED FOR THIS TRANSACTION ONLY.

ALL BEARINGS, DISTANCES, AND COORDINATE VALUES CONTAINED HEREON ARE GRID BASED UPON THE NEW MEXICO COORDINATE SYSTEM OF 1983, EAST ZONE, U.S. SURVEY FEET.



SCALE: 1" = 10000'
 0' 5000' 10000'

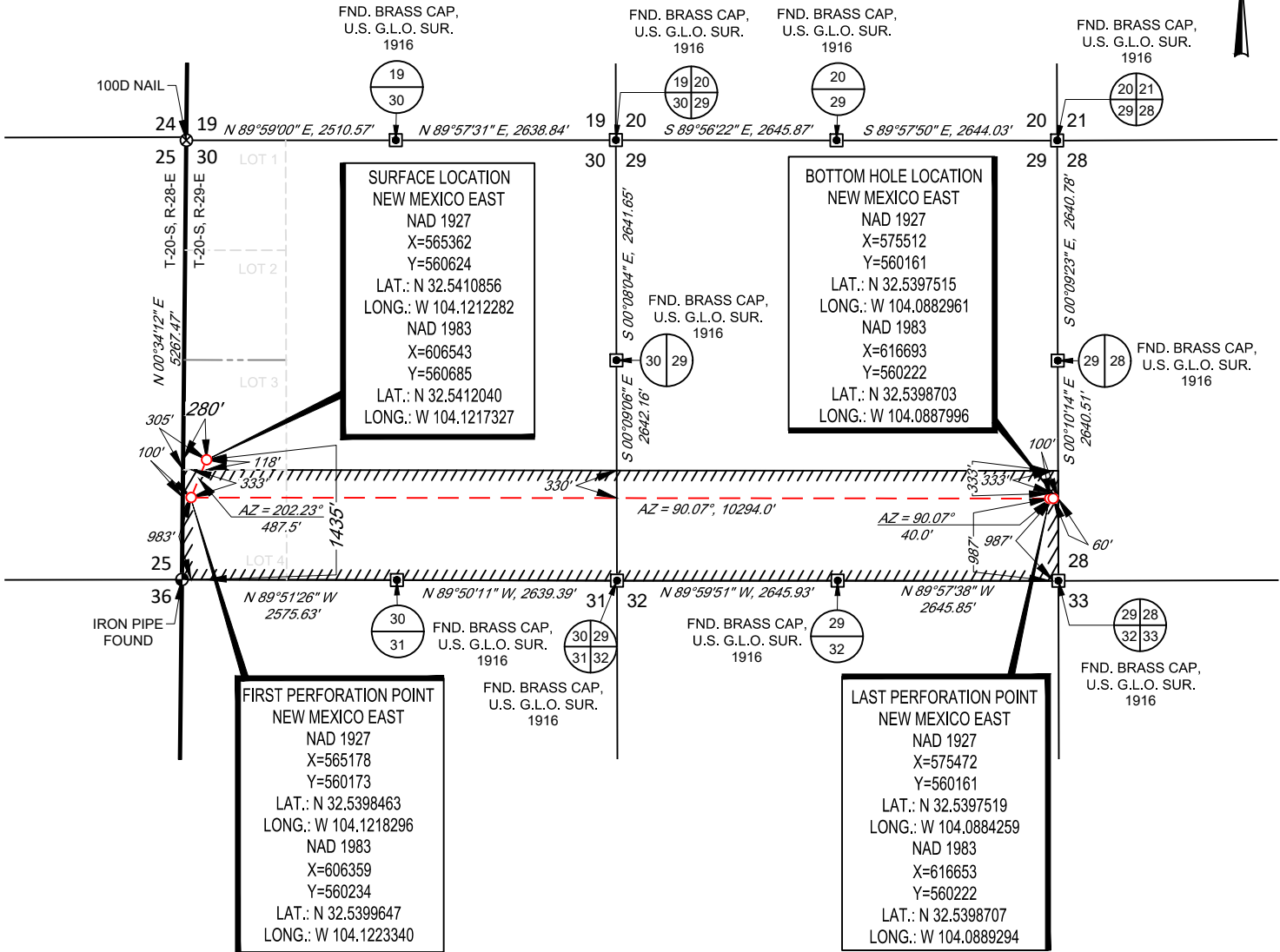
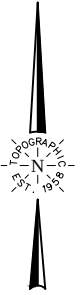


1400 EVERMAN PARKWAY, Ste. 146 • FT. WORTH, TEXAS 76140
 TELEPHONE: (817) 744-7512 • FAX (817) 744-7554
 2903 NORTH BIG SPRING • MIDLAND, TEXAS 79705
 TELEPHONE: (432) 682-1653 OR (800) 767-1653 • FAX (432) 682-1743
 WWW.TOPOGRAPHIC.COM

SCALE: 1" = 2000'
 0' 1000' 2000'



SECTION 30, TOWNSHIP 20-S, RANGE 29-E, N.M.P.M.
 EDDY COUNTY, NEW MEXICO



LEASE NAME & WELL NO.: LEATHERNECK 3029 FED COM 224H
 SECTION 30 TWP 20-S RGE 29-E SURVEY N.M.P.M.
 COUNTY EDDY STATE NM
 DESCRIPTION 1435' FSL & 280' FWL

DISTANCE & DIRECTION
 FROM INT. OF NM-360 & US-180/US-62 GO WEST ON US-180/US-62 ±6.8
 MILES, THENCE NORTH (RIGHT) ON MAGNUM RD. ±4.3 MILES, THENCE
 EAST (RIGHT) ON PROPOSED RD. ±50 FEET TO A POINT ±461 FEET
 NORTHWEST OF THE LOCATION.



Angel M. Baeza, License No. 25116
 MAY 7, 2019

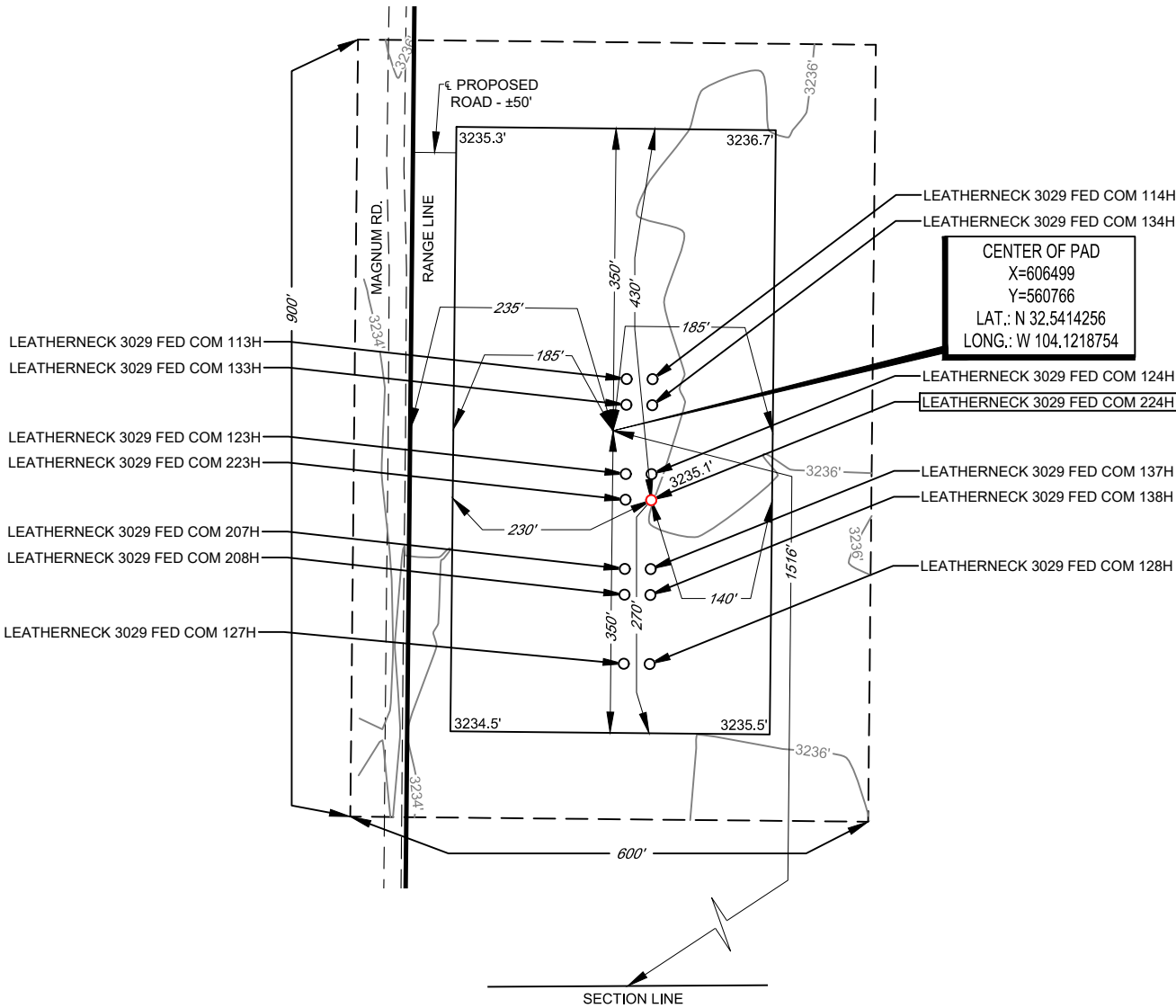
ALL BEARINGS, DISTANCES, AND COORDINATE VALUES CONTAINED HEREON ARE GRID BASED UPON THE NEW MEXICO COORDINATE SYSTEM OF 1983, EAST ZONE, U.S. SURVEY FEET
 THIS EASEMENT/SERVITUDE LOCATION SHOWN HEREON HAS BEEN SURVEYED ON THE GROUND UNDER MY SUPERVISION AND PREPARED ACCORDING TO THE EVIDENCE FOUND AT THE TIME OF SURVEY, AND DATA PROVIDED BY MATADOR PRODUCTION COMPANY. THIS CERTIFICATION IS MADE AND LIMITED TO THOSE PERSONS OR ENTITIES SHOWN ON THE FACE OF THIS PLAT AND IS NON-TRANSFERABLE. THIS SURVEY IS CERTIFIED FOR THIS TRANSACTION ONLY.
 AS OF THE DATE OF SURVEY, ALL ABOVE GROUND APPURTENANCES WITHIN 300' OF THE STAKED LOCATION ARE SHOWN HEREON.

TOPOGRAPHIC
 LOYALTY INNOVATION LEGACY
 1400 EVERMAN PARKWAY, Ste. 146 • FT. WORTH, TEXAS 76140
 TELEPHONE: (817) 744-7512 • FAX: (817) 744-7554
 2903 NORTH BIG SPRING • MIDLAND, TEXAS 79705
 TELEPHONE: (432) 682-1653 OR (800) 767-1653 • FAX (432) 682-1743
 WWW.TOPOGRAPHIC.COM



SECTION 30, TOWNSHIP 20-S, RANGE 29-E, N.M.P.M.
EDDY COUNTY, NEW MEXICO

DETAIL VIEW
SCALE: 1" = 200'

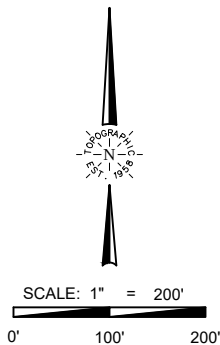


LEASE NAME & WELL NO.: LEATHERNECK 3029 FED COM 224H
224H LATITUDE N 32.5412040 224H LONGITUDE W 104.1217327

CENTER OF PAD IS 1516' FSL & 235' FWL

LEGEND

- RANGE LINE
- SECTION LINE
- PROPOSED ROAD
- ROAD WAY



ALL BEARINGS, DISTANCES, AND COORDINATE VALUES CONTAINED HEREON ARE GRID BASED UPON THE NEW MEXICO COORDINATE SYSTEM OF 1983, EAST ZONE, U.S. SURVEY FEET

THIS PROPOSED PAD SITE LOCATION SHOWN HEREON HAS BEEN SURVEYED ON THE GROUND UNDER MY SUPERVISION AND PREPARED ACCORDING TO THE EVIDENCE FOUND AT THE TIME OF SURVEY, AND DATA PROVIDED BY MATADOR PRODUCTION COMPANY. THIS CERTIFICATION IS MADE AND LIMITED TO THOSE PERSONS OR ENTITIES SHOWN ON THE FACE OF THIS PLAT AND IS NON-TRANSFERABLE. THIS SURVEY IS CERTIFIED FOR THIS TRANSACTION ONLY.

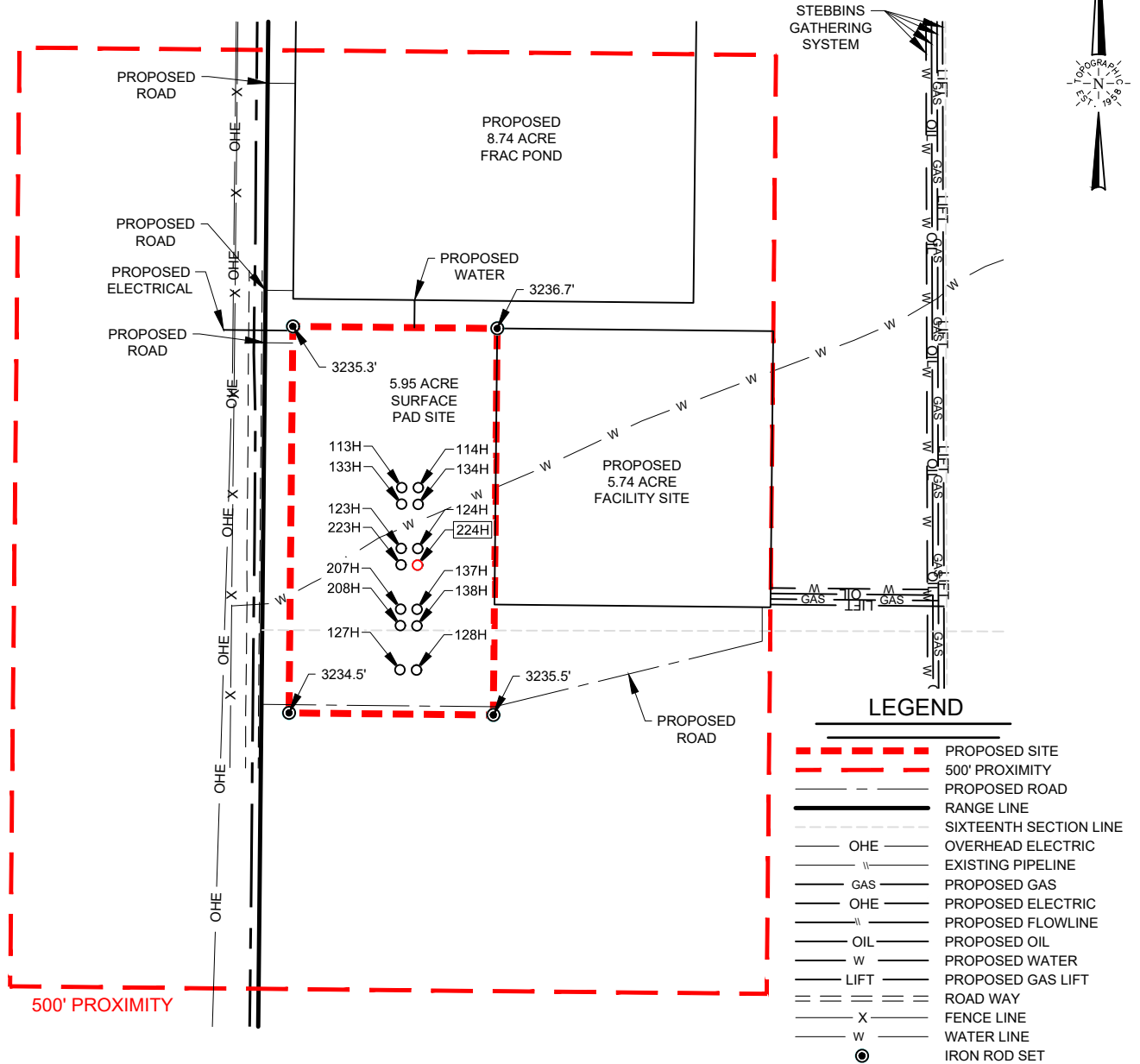


1400 EVERMAN PARKWAY, Ste. 146 • FT. WORTH, TEXAS 76140
TELEPHONE: (817) 744-7512 • FAX (817) 744-7554
2903 NORTH BIG SPRING • MIDLAND, TEXAS 79705
TELEPHONE: (432) 682-1653 OR (800) 767-1653 • FAX (432) 682-1743
WWW.TOPOGRAPHIC.COM

ORIGINAL DOCUMENT SIZE: 8.5" X 11"

SCALE: 1" = 300'
 0' 150' 300'

SECTION 30, TOWNSHIP 20-S, RANGE 29-E, N.M.P.M.
 EDDY COUNTY, NEW MEXICO



Angel M. Baeza, License No. 25116
 MAY 7, 2019



TOPOGRAPHIC
 LOYALTY INNOVATION LEGACY

1400 EVERMAN PARKWAY, Ste. 146 • FT. WORTH, TEXAS 76140
 TELEPHONE: (817) 744-7512 • FAX (817) 744-7554
 2903 NORTH BIG SPRING • MIDLAND, TEXAS 79705
 TELEPHONE: (432) 682-1653 OR (800) 767-1653 • FAX (432) 682-1743
 WWW.TOPOGRAPHIC.COM

| | | | |
|---|-----------|------------|------------|
| LEATHERNECK 3029 FED COM 224H PROXIMITY MAP | REVISION: | | |
| | MML | 02/16/19 | |
| | MML | 03/21/2019 | |
| | JDR | 04/02/2019 | |
| DATE: | 05/11/18 | MML | 05/01/2019 |
| DRAWN BY: | IMU | | |
| SHEET : | 7 OF 7 | | |

NOTES:

1. ORIGINAL DOCUMENT SIZE: 8.5" X 11"
2. ALL BEARINGS, DISTANCES, AND COORDINATE VALUES CONTAINED HEREIN ARE GRID BASED UPON THE NEW MEXICO COORDINATE SYSTEM OF 1983, EAST ZONE, U.S. SURVEY FEET.
3. CERTIFICATION IS MADE ONLY TO THE LOCATION OF THIS EASEMENT, IN RELATION TO THE EVIDENCE FOUND DURING A FIELD SURVEY, MADE ON THE GROUND, UNDER MY SUPERVISION, AND USING DOCUMENTATION PROVIDED BY MATADOR PRODUCTION COMPANY. ONLY UTILITIES/EASEMENTS THAT WERE VISIBLE ON THE DATE OF THIS SURVEY, WITHIN/ADJOINING THIS EASEMENT, HAVE BEEN LOCATED AS SHOWN HEREON OF WHICH I HAVE KNOWLEDGE. THIS CERTIFICATION IS LIMITED TO THOSE PERSONS OR ENTITIES SHOWN ON THE FACE OF THIS PLAT AND IS NON-TRANSFERABLE, AND MADE FOR THIS TRANSACTION ONLY.
4. ADJOINER INFORMATION SHOWN FOR INFORMATIONAL PURPOSES ONLY.