

District I
1625 N. French Dr., Hobbs, NM 88240
Phone: (575) 393-6161 Fax: (575) 393-0720
District II
811 S. First St., Artesia, NM 88210
Phone: (575) 748-1283 Fax: (575) 748-9720
District III
1000 Rio Brazos Road, Aztec, NM 87410
Phone: (505) 334-6178 Fax: (505) 334-6170
District IV
1220 S. St. Francis Dr., Santa Fe, NM 87505
Phone: (505) 476-3460 Fax: (505) 476-3462

State of New Mexico
Energy, Minerals & Natural Resources
Department
OIL CONSERVATION DIVISION
1220 South St. Francis Dr.
Santa Fe, NM 87505

FORM C-102
Revised August 1, 2011
Submit one copy to appropriate
District Office

AMENDED REPORT

WELL LOCATION AND ACREAGE DEDICATION PLAT

¹ API Number 30-015-47045	² Pool Code 98315	³ Pool Name WC Burton Flat East; Upper Wolfcamp
⁴ Property Code	⁵ Property Name LEATHERNECK 3029 FED COM	
⁷ OGRID No. 228937	⁸ Operator Name MATADOR PRODUCTION COMPANY	⁶ Well Number 207H
		⁹ Elevation 3236'

¹⁰Surface Location

UL or lot no.	Section	Township	Range	Lot Idn	Feet from the	North/South line	Feet from the	East/West line	County
3	30	20-S	29-E	-	1325'	SOUTH	280'	WEST	EDDY

¹¹Bottom Hole Location If Different From Surface

UL or lot no.	Section	Township	Range	Lot Idn	Feet from the	North/South line	Feet from the	East/West line	County
I	29	20-S	29-E	-	1650'	SOUTH	60'	EAST	EDDY

¹² Dedicated Acres 317.32	¹³ Joint or Infill	¹⁴ Consolidation Code	¹⁵ Order No.
--	-------------------------------	----------------------------------	-------------------------

No allowable will be assigned to this completion until all interests have been consolidated or a non-standard unit has been approved by the division.

¹⁷OPERATOR CERTIFICATION

I hereby certify that the information contained herein is true and complete to the best of my knowledge and belief, and that this organization either owns a working interest or unleased mineral interest in the land including the proposed bottom hole location or has a right to drill this well at this location pursuant to a contract with an owner of such a mineral or working interest, or to a voluntary pooling agreement or a compulsory pooling order heretofore entered by the division.

CLaBolt 12/7/2020
Signature Date

Cade LaBolt
Printed Name

cade.labolt@matadorresources.com
E-mail Address

¹⁸SURVEYOR CERTIFICATION

I hereby certify that the well location shown on this plat was plotted from field notes of actual surveys made by me or under my supervision, and that the same is true to the best of my belief.

04/30/2019
Date of Survey

ANGEL M. BAEZA
Signature and Seal of Professional Surveyor

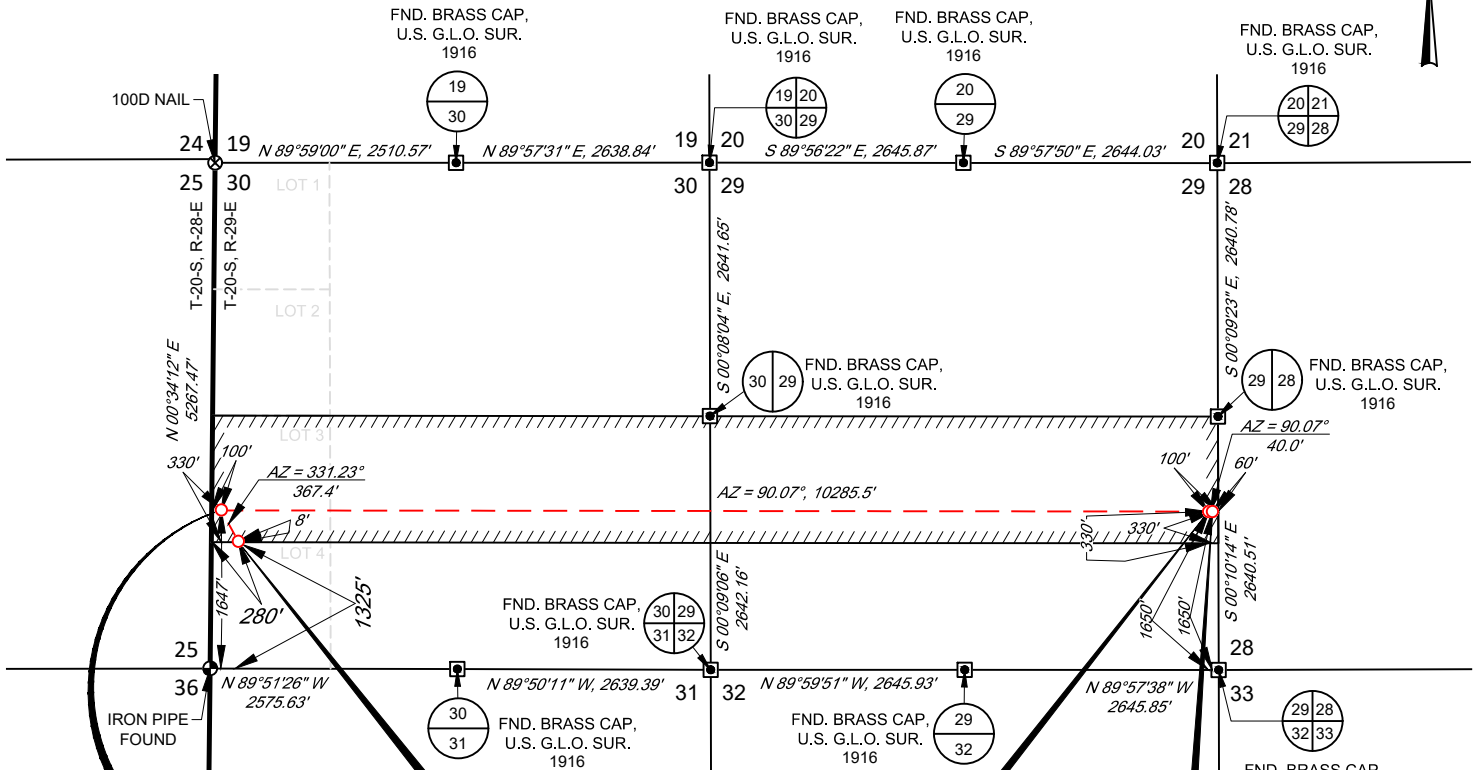
25116
Certificate Number

FIRST PERFORATION POINT NEW MEXICO EAST NAD 1927 X=565185 Y=560836 LAT.: N 32.5416699 LONG.: W 104.1218040 NAD 1983 X=606365 Y=560898 LAT.: N 32.5417883 LONG.: W 104.1223085	SURFACE LOCATION NEW MEXICO EAST NAD 1927 X=565361 Y=560514 LAT.: N 32.5407835 LONG.: W 104.1212323 NAD 1983 X=606542 Y=560576 LAT.: N 32.5409019 LONG.: W 104.1217367	LAST PERFORATION POINT NEW MEXICO EAST NAD 1927 X=575470 Y=560824 LAT.: N 32.5415756 LONG.: W 104.0884273 NAD 1983 X=616651 Y=560886 LAT.: N 32.5416944 LONG.: W 104.0889308	BOTTOM HOLE LOCATION NEW MEXICO EAST NAD 1927 X=575510 Y=560824 LAT.: N 32.5415752 LONG.: W 104.0882975 NAD 1983 X=616691 Y=560885 LAT.: N 32.5416940 LONG.: W 104.0888010
---	--	--	--

SCALE: 1" = 2000'
 0' 1000' 2000'



SECTION 30, TOWNSHIP 20-S, RANGE 29-E, N.M.P.M.
 EDDY COUNTY, NEW MEXICO



FIRST PERFORATION POINT
 NEW MEXICO EAST
 NAD 1927
 X=565185
 Y=560836
 LAT.: N 32.5416699
 LONG.: W 104.1218040
 NAD 1983
 X=606365
 Y=560898
 LAT.: N 32.5417883
 LONG.: W 104.1223085

SURFACE LOCATION
 NEW MEXICO EAST
 NAD 1927
 X=565361
 Y=560514
 LAT.: N 32.5407835
 LONG.: W 104.1212323
 NAD 1983
 X=606542
 Y=560576
 LAT.: N 32.5409019
 LONG.: W 104.1217367

LAST PERFORATION POINT
 NEW MEXICO EAST
 NAD 1927
 X=575470
 Y=560824
 LAT.: N 32.5415756
 LONG.: W 104.0884273
 NAD 1983
 X=616651
 Y=560886
 LAT.: N 32.5416944
 LONG.: W 104.0889308

BOTTOM HOLE LOCATION
 NEW MEXICO EAST
 NAD 1927
 X=575510
 Y=560824
 LAT.: N 32.5415752
 LONG.: W 104.0882975
 NAD 1983
 X=616691
 Y=560885
 LAT.: N 32.5416940
 LONG.: W 104.0888010

LEASE NAME & WELL NO.: LEATHERNECK 3029 FED COM 207H
 SECTION 30 TWP 20-S RGE 29-E SURVEY N.M.P.M.
 COUNTY EDDY STATE NM
 DESCRIPTION 1325' FSL & 280' FWL

DISTANCE & DIRECTION
FROM INT. OF NM-360 & US-180/US-62 GO WEST ON US-180/US-62 ±6.8
MILES, THENCE NORTH (RIGHT) ON MAGNUM RD. ±4.3 MILES, THENCE
EAST (RIGHT) ON PROPOSED RD. ±50 FEET TO A POINT ±520 FEET
NORTHWEST OF THE LOCATION.



Angel M. Baeza, License No. 25116
 APRIL 1, 2019

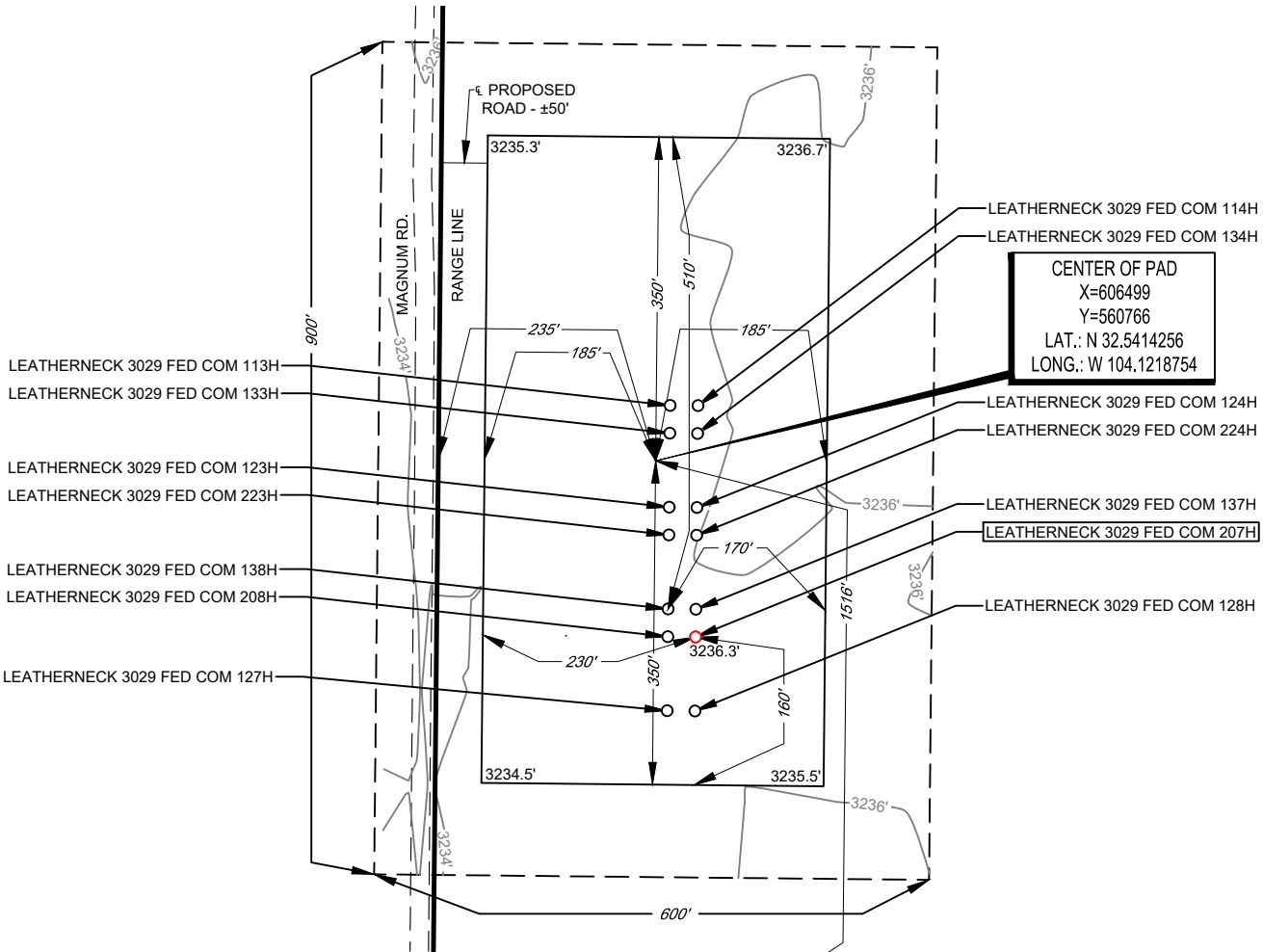
ALL BEARINGS, DISTANCES, AND COORDINATE VALUES CONTAINED HEREON ARE GRID BASED UPON THE NEW MEXICO COORDINATE SYSTEM OF 1983, EAST ZONE, U.S. SURVEY FEET
 THIS EASEMENT/SERVITUDE LOCATION SHOWN HEREON HAS BEEN SURVEYED ON THE GROUND UNDER MY SUPERVISION AND PREPARED ACCORDING TO THE EVIDENCE FOUND AT THE TIME OF SURVEY, AND DATA PROVIDED BY MATADOR PRODUCTION COMPANY. THIS CERTIFICATION IS MADE AND LIMITED TO THOSE PERSONS OR ENTITIES SHOWN ON THE FACE OF THIS PLAT AND IS NON-TRANSFERABLE. THIS SURVEY IS CERTIFIED FOR THIS TRANSACTION ONLY.
 AS OF THE DATE OF SURVEY, ALL ABOVE GROUND APPURTENANCES WITHIN 300' OF THE STAKED LOCATION ARE SHOWN HEREON.

TOPOGRAPHIC
 LOYALTY INNOVATION LEGACY
 1400 EVERMAN PARKWAY, Ste. 146 • FT. WORTH, TEXAS 76140
 TELEPHONE: (817) 744-7512 • FAX (817) 744-7554
 2903 NORTH BIG SPRING • MIDLAND, TEXAS 79705
 TELEPHONE: (432) 682-1653 OR (800) 767-1653 • FAX (432) 682-1743
 WWW.TOPOGRAPHIC.COM



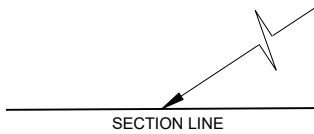
SECTION 30, TOWNSHIP 20-S, RANGE 29-E, N.M.P.M.
EDDY COUNTY, NEW MEXICO

DETAIL VIEW
SCALE: 1" = 200'



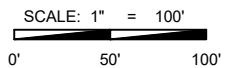
LEGEND

- RANGE LINE
- SECTION LINE
- PROPOSED ROAD
- ROAD WAY



LEASE NAME & WELL NO.: LEATHERNECK 3029 FED COM 207H
 207H LATITUDE N 32.5409019 207H LONGITUDE W 104.1217367

CENTER OF PAD IS 1516' FSL & 235' FWL



Angel M. Baeza, P.S. No. 25116

ALL BEARINGS, DISTANCES, AND COORDINATE VALUES CONTAINED HEREON ARE GRID BASED UPON THE NEW MEXICO COORDINATE SYSTEM OF 1983, EAST ZONE, U.S. SURVEY FEET. ELEVATIONS USED ARE NAVD88, OBTAINED THROUGH AN OPUS SOLUTION.

THIS PROPOSED PAD SITE LOCATION SHOWN HEREON HAS BEEN SURVEYED ON THE GROUND UNDER MY SUPERVISION AND PREPARED ACCORDING TO THE EVIDENCE FOUND AT THE TIME OF SURVEY, AND DATA PROVIDED BY MATADOR PRODUCTION COMPANY. ONLY THE DATA SHOWN ABOVE IS BEING CERTIFIED TO. ALL OTHER INFORMATION WAS INTENTIONALLY OMITTED. THIS PLAT IS ONLY INTENDED TO BE USED FOR A PERMIT AND IS NOT A BOUNDARY SURVEY. THIS CERTIFICATION IS MADE AND LIMITED TO THOSE PERSONS OR ENTITIES SHOWN ON THE FACE OF THIS PLAT AND IS NON-TRANSFERABLE. THIS SURVEY IS CERTIFIED FOR THIS TRANSACTION



1400 EVERMAN PARKWAY, Ste. 146 • FT. WORTH, TEXAS 76140
 TELEPHONE: (817) 744-7512 • FAX (817) 744-7554
 2903 NORTH BIG SPRING • MIDLAND, TEXAS 79705
 TELEPHONE: (432) 682-1653 OR (800) 767-1653 • FAX (432) 682-1743
 WWW.TOPOGRAPHIC.COM

ORIGINAL DOCUMENT SIZE: 8.5" X 11"