

District I
1625 N. French Dr., Hobbs, NM 88240
Phone: (575) 393-6161 Fax: (575) 393-0720
District II
811 S. First St., Artesia, NM 88210
Phone: (575) 748-1283 Fax: (575) 748-9720
District III
1000 Rio Brazos Road, Aztec, NM 87410
Phone: (505) 334-6178 Fax: (505) 334-6170
District IV
1220 S. St. Francis Dr., Santa Fe, NM 87505
Phone: (505) 476-3460 Fax: (505) 476-3462

State of New Mexico
Energy, Minerals & Natural Resources Department
OIL CONSERVATION DIVISION
1220 South St. Francis Dr.
Santa Fe, NM 87505

Form C-102
Revised August 1, 2011
Submit one copy to appropriate
District Office

OCD - HOBBS AMENDED REPORT
11/18/2020
RECEIVED

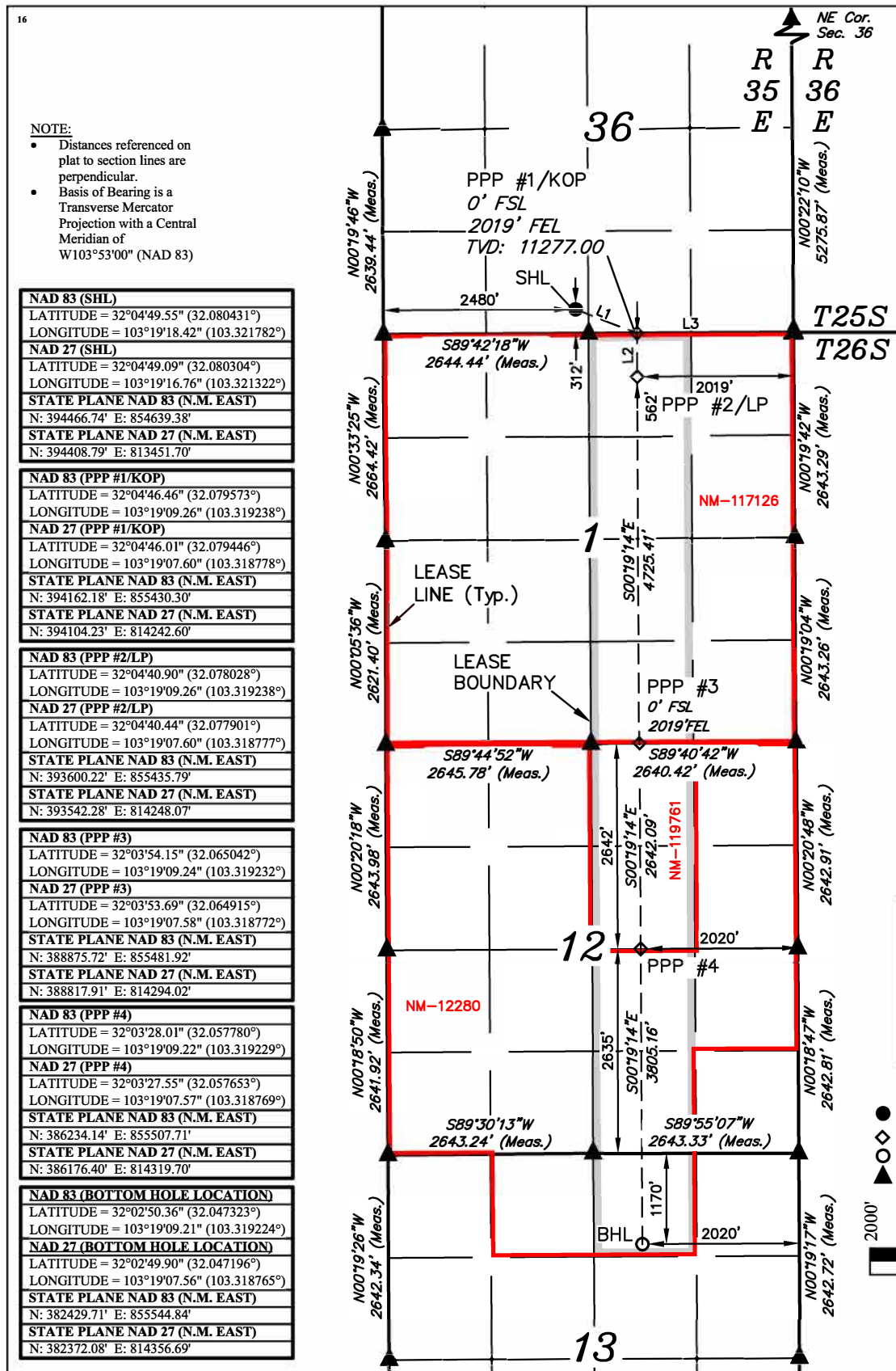
WELL LOCATION AND ACREAGE DEDICATION PLAT

¹ API Number 30-025-48104		² Pool Code 97088		³ Pool Name WC-025 G-08 S253534O;BONE SPRING	
⁴ Property Code 329877		⁵ Property Name KASTON FED COM			⁶ Well Number 603H
⁷ OGRID No. 373910		⁸ Operator Name FRANKLIN MOUNTAIN ENERGY LLC			⁹ Elevation 3056.1'

¹⁰ Surface Location									
UL or lot no. N	Section 36	Township 25S	Range 35E	Lot Idn	Feet from the 312	North/South line SOUTH	Feet from the 2480	East/West line WEST	County LEA

¹¹ Bottom Hole Location If Different From Surface									
UL or lot no. B	Section 13	Township 26S	Range 35E	Lot Idn	Feet from the 1170	North/South line NORTH	Feet from the 2020	East/West line EAST	County LEA
¹² Dedicated Acres 720		¹³ Joint or Infill		¹⁴ Consolidation Code		¹⁵ Order No.			

No allowable will be assigned to this completion until all interests have been consolidated or a non-standard unit has been approved by the division.



NOTE:

- Distances referenced on plat to section lines are perpendicular.
- Basis of Bearing is a Transverse Mercator Projection with a Central Meridian of W103°53'00" (NAD 83)

NAD 83 (SHL) LATITUDE = 32°04'49.55" (32.080431°) LONGITUDE = 103°19'18.42" (103.321782°)
NAD 27 (SHL) LATITUDE = 32°04'49.09" (32.080304°) LONGITUDE = 103°19'16.76" (103.321322°)
STATE PLANE NAD 83 (N.M. EAST) N: 394466.74' E: 854639.38'
STATE PLANE NAD 27 (N.M. EAST) N: 394408.79' E: 813451.70'
NAD 83 (PPP #1/KOP) LATITUDE = 32°04'46.46" (32.079573°) LONGITUDE = 103°19'09.26" (103.319238°)
NAD 27 (PPP #1/KOP) LATITUDE = 32°04'46.01" (32.079446°) LONGITUDE = 103°19'07.60" (103.318778°)
STATE PLANE NAD 83 (N.M. EAST) N: 394162.18' E: 855430.30'
STATE PLANE NAD 27 (N.M. EAST) N: 394104.23' E: 814242.60'
NAD 83 (PPP #2/LP) LATITUDE = 32°04'40.90" (32.078028°) LONGITUDE = 103°19'09.26" (103.319238°)
NAD 27 (PPP #2/LP) LATITUDE = 32°04'40.44" (32.077901°) LONGITUDE = 103°19'07.60" (103.318777°)
STATE PLANE NAD 83 (N.M. EAST) N: 393600.22' E: 855435.79'
STATE PLANE NAD 27 (N.M. EAST) N: 393542.28' E: 814248.07'
NAD 83 (PPP #3) LATITUDE = 32°03'54.15" (32.065042°) LONGITUDE = 103°19'09.24" (103.319232°)
NAD 27 (PPP #3) LATITUDE = 32°03'53.69" (32.064915°) LONGITUDE = 103°19'07.58" (103.318772°)
STATE PLANE NAD 83 (N.M. EAST) N: 388875.72' E: 855481.92'
STATE PLANE NAD 27 (N.M. EAST) N: 388817.91' E: 814294.02'
NAD 83 (PPP #4) LATITUDE = 32°03'28.01" (32.057780°) LONGITUDE = 103°19'09.21" (103.319229°)
NAD 27 (PPP #4) LATITUDE = 32°03'27.55" (32.057653°) LONGITUDE = 103°19'07.57" (103.318769°)
STATE PLANE NAD 83 (N.M. EAST) N: 386234.14' E: 855507.71'
STATE PLANE NAD 27 (N.M. EAST) N: 386176.40' E: 814319.70'
NAD 83 (BOTTOM HOLE LOCATION) LATITUDE = 32°02'50.36" (32.047323°) LONGITUDE = 103°19'09.21" (103.319224°)
NAD 27 (BOTTOM HOLE LOCATION) LATITUDE = 32°02'49.90" (32.047196°) LONGITUDE = 103°19'07.56" (103.318765°)
STATE PLANE NAD 83 (N.M. EAST) N: 382429.71' E: 855544.84'
STATE PLANE NAD 27 (N.M. EAST) N: 382372.08' E: 814356.69'

¹⁷ OPERATOR CERTIFICATION
I hereby certify that the information contained herein is true and complete to the best of my knowledge and belief, and that this organization either owns a working interest or unleased mineral interest in the land including the proposed bottom hole location or has a right to drill this well at this location pursuant to a contract with an owner of such a mineral or working interest, or to a voluntary pooling agreement or a compulsory pooling order heretofore entered by the division.

Signature: *Shelly Albrecht* Date: 10/13/2020

Shelly Albrecht
Printed Name
salbrecht@fmellc.com
E-mail Address

¹⁸ SURVEYOR CERTIFICATION
I hereby certify that the well location shown on this plat was plotted from field notes of actual surveys made by me or under my supervision, and that the same is true and correct to the best of my belief.

February 03, 2020
Date of Survey

Signature and Seal of Professional Surveyor:



Certificate Number:

LINE TABLE

LINE	DIRECTION	LENGTH
L1	S68°42'02"E	847.66'
L2	S00°19'15"E	562.07'
L3	S89°42'17"W	2642.13'

- = SURFACE HOLE LOCATION
- ◇ = PPP
- ◊ = BOTTOM HOLE LOCATION
- ▲ = SECTION CORNER LOCATED



SCALE
DRAWN BY: T.A. 02-06-20
REV: 2 10-08-20 C.IVIE
(KOP & LP MOVE)