

UNITED STATES  
DEPARTMENT OF THE INTERIOR  
GEOLOGICAL SURVEY

API # 30-003-20010

APPLICATION FOR PERMIT TO DRILL, DEEPEN, OR PLUG BACK

1A. TYPE OF WORK  
 DRILL  DEEPEN  PLUG BACK

B. TYPE OF WELL  
 OIL WELL  GAS WELL  OTHER   
 SINGLE ZONE  MULTIPLE ZONE

2. NAME OF OPERATOR  
 Reeves Brothers Petroleum 'A' Ltd.

3. ADDRESS OF OPERATOR  
 2701 - 2nd, N.W.  
 Albuquerque, New Mexico 87107

4. LOCATION OF WELL (Report location clearly and in accordance with any State requirements.)  
 At surface 2310' FSL, 2310' FWL Unit K  
 At proposed prod. zone Same

14. DISTANCE IN MILES AND DIRECTION FROM NEAREST TOWN OR POST OFFICE\*  
 24 miles NW of Datil, New Mexico

15. DISTANCE FROM PROPOSED LOCATION TO NEAREST PROPERTY OR LEASE LINE, FT. (Also to nearest drlg. unit line, if any) 2310'

16. NO. OF ACRES IN LEASE 800

17. NO. OF ACRES ASSIGNED TO THIS WELL 40

18. DISTANCE FROM PROPOSED LOCATION TO NEAREST WELL, DRILLING, COMPLETED, OR APPLIED FOR, ON THIS LEASE, FT. 8580'

19. PROPOSED DEPTH 1200' Baca

20. ROTARY OR CABLE TOOLS Rotary

21. ELEVATIONS (Show whether DF, RT, GR, etc.) 7680' Gr.

22. APPROX. DATE WORK WILL START\* 9-15-1978

5. LEASE DESIGNATION AND SERIAL NO.  
 NM-28932

6. IF INDIAN, ALLOTTEE OR TRIBE NAME

7. UNIT AGREEMENT NAME

8. FARM OR LEASE NAME  
 Reeves

9. WELL NO.  
 2

10. FIELD AND POOL, OR WPCAT  
 Wildcat

11. SEC., T., R., M., OR BLS. AND SURVEY OR AREA  
 26, T2N, R11W

12. COUNTY OR PARISH  
 Catron

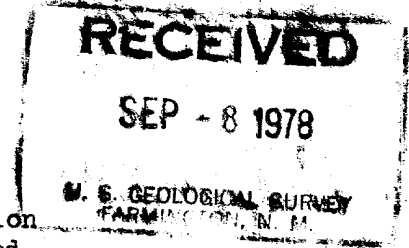
13. STATE  
 N.M.

23. PROPOSED CASING AND CEMENTING PROGRAM

SIZE OF HOLE	SIZE OF CASING	WEIGHT PER FOOT	SETTING DEPTH	QUANTITY OF CEMENT
9	7	20	40	25 sacks
6 1/4	4 1/2	9.5	1200	100 sacks

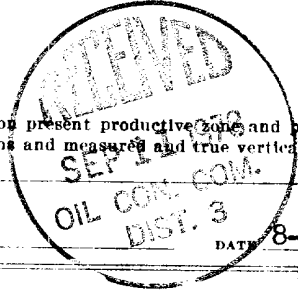
PROPOSED DRILLING PROGRAM (with Attachments)

1. Set above surface casing.
2. Use of standard Mayhew 1000 blowout equipment.
3. Drill 6 1/4 hole to 1200'.
4. Run electric logs.
5. Run & cement 4 1/2 production casing, circulate cement.
6. Perforate and put on pump.
7. If Non-commercial, plug & abandon and restore the location in accordance USGS, BLM and surface owner regulations and instructions.



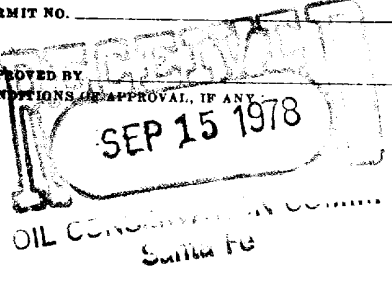
IN ABOVE SPACE DESCRIBE PROPOSED PROGRAM: If proposal is to deepen or plug back, give data on present productive zone and proposed new productive zone. If proposal is to drill or deepen directionally, give pertinent data on subsurface locations and measured and true vertical depths. Give blowout preventer program, if any.

24. SIGNED Stanley J. Kennedy TITLE Agent DATE 8-30-1978



PERMIT NO. \_\_\_\_\_ APPROVAL DATE \_\_\_\_\_

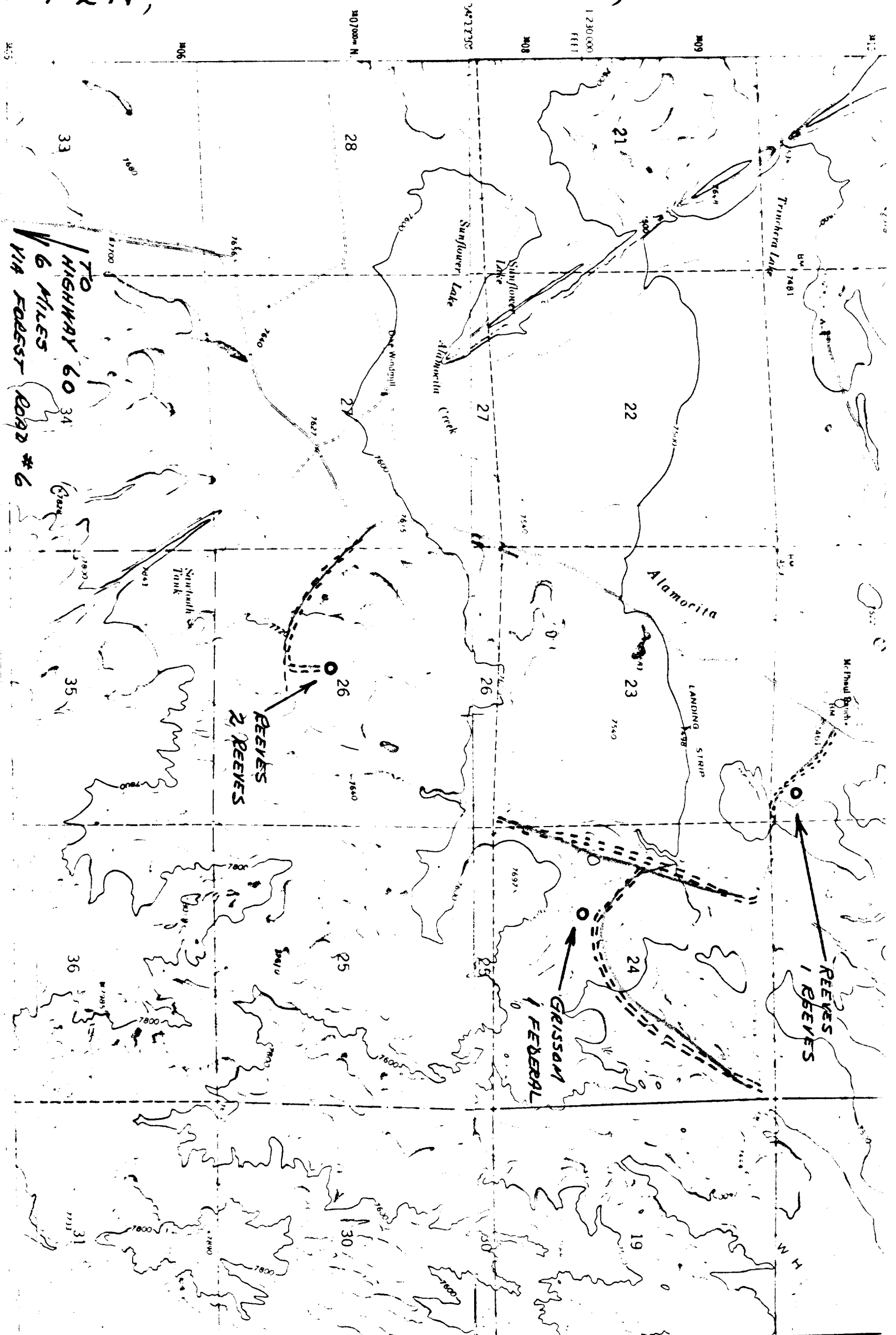
APPROVED BY \_\_\_\_\_ TITLE \_\_\_\_\_ DATE \_\_\_\_\_



\*See Instructions On Reverse Side

NMOCC

# T2N, R11W CATRON COUNTY, N.M.



TO HIGHWAY 60  
6 MILES  
VIA FOREST ROAD #6

REEVES  
2 REEVES

GRISSAM  
1 FERRAL

REEVES  
1 REEVES

307000 N  
308  
1230000  
FEET  
309  
310

33  
28  
21  
27  
22  
26  
23  
24  
25  
26  
35  
36  
31  
30  
19

REEVES BROTHERS PETROLEUM 'A' LTD.

FORMATION INFORMATION AND DRILLING PRACTICES

WELL:

REEVES #2

LOCATION:

2310' FSL, 2310' FWL  
Sec. 26, T2N, R11W  
Catron County, New Mexico

LEASE NUMBER:

NM-28932

1. Geologic name of surface formation.  
Baca
2. Estimated tops of important geologic markers.  
Baca surface to T.D.
3. Estimated depths at which anticipated water, oil, gas or other mineral bearing formations are expected.  
Wildcat - Unknown.
4. Proposed casing program.  
Surface: 7", 20#, K-55, used casing to be set at 40'.  
Cement will be 25 sacks Class 'B' circulated.  
  
Production:  
4½", 9.5#, K-55, new casing to be set at 1200'.  
Cement will be 150 sacks Class 'B' circulated.
5. Specifications for pressure control equipment.  
The attached schematic shows the type of blow out preventer to be used while drilling. The unit will be tested to maximum pressure with the rig pump prior to drilling from under surface. Both blind and pipe rams will be tested. Operation of the hydraulic system will be checked daily.
6. Drilling fluids.  
O-1200', Native mud, Vis 36, Wt 9.0.
7. Auxiliary equipment.
  - A. Bit float.
  - B. Full opening stabbing valve for use when Kelly is not connected.
8. Logging - Coring - Testing.  
  
Logging: Induction Electric Log.  
Coring: None  
Drill Stem Testing: None
9. Abnormal temperatures, pressures, or hazardous conditions.  
  
NONE EXPECTED.
10. Starting date.  
9-15-1978.



SHAFFER HYDRAULIC BLOWOUT PREVENTERS

(Patented)

TYPE LWS PREVENTERS—8", 3000 lb. & 5000 lb.—10", 5000 lb.  
12", 3000 lb.—13 1/2", 5000 lb.—16", 3000 lb.

PARTS AND DIMENSIONAL ILLUSTRATIONS

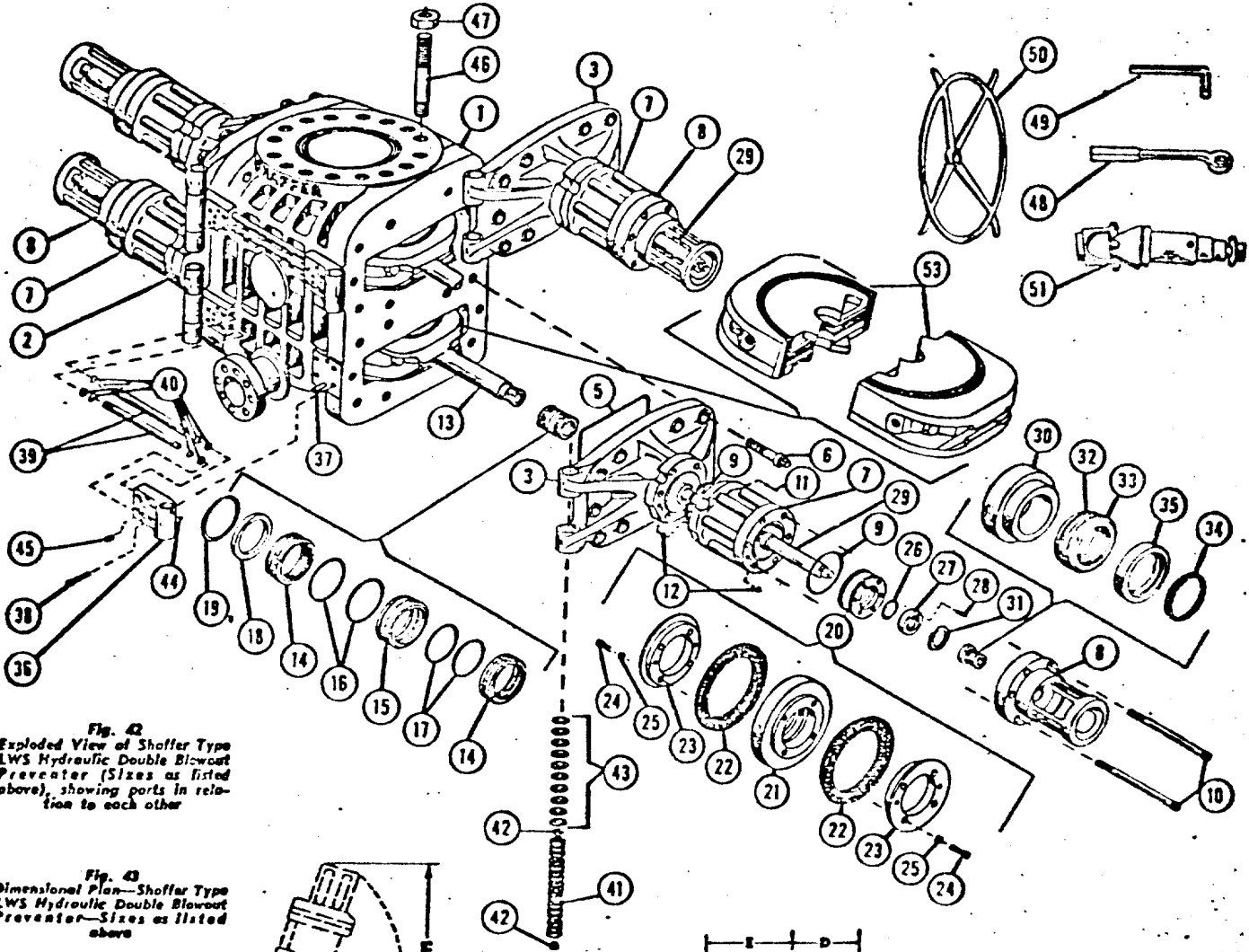


Fig. 42  
Exploded View of Shaffer Type LWS Hydraulic Double Blowout Preventer (Sizes as listed above), showing parts in relation to each other

Fig. 43  
Dimensional Plan—Shaffer Type LWS Hydraulic Double Blowout Preventer—Sizes as listed above

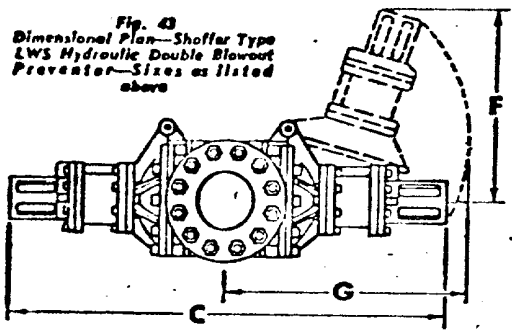
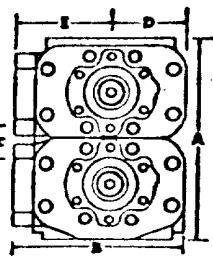


Fig. 44  
Dimensional End Elevation—Shaffer Type LWS Hydraulic Double Blowout Preventer—Sizes as listed above



STANDARD ACCESSORIES

- (50) 4 Hand Wheels
- (48) 1 Door Wrench
- (49) 1 Cylinder & Cylinder Head Wrench
- (51) 4 Universal Joints

DIMENSIONAL AND ENGINEERING DATA ON ABOVE SIZES OF TYPE LWS PREVENTERS

Refer to Figs. 43 and 44

Size	Max. Service Press. Rating psi	Test Press. psi	Vertical Bore	Max. Pam Size	Approx. Weight Lbs.	A				B	C	D	E	F	G	Clearing Ratio	Opening Rate	U.S. Gals. Fluid To Close Ram	U.S. Gals. Fluid To Open Ram						
						Studded Flange		Belted Flange												Width	Length	Center To Front	Center To Rear	Door Open To Change Ram	Door Open To Change Ram
						Single	Double	Single	Double																
8"	3,000	8,000	8"	7"	3,900	29 1/2"	41 1/2"	25 1/2"	79 1/2"	11 1/2"	14 1/2"	22"	48"	5.8 to 1	1.29 to 1	2.78	2.8								
10"	4,000	10,000	11"	8 1/2"	5,800	33"	45 1/2"	28 1/2"	79 1/2"	11 1/2"	14 1/2"	22"	48"	5.8 to 1	1.29 to 1	2.78	2.8								
12"	3,000	8,000	12 1/2"	10 1/2"	8,200	34 1/2"	47 1/2"	31 1/2"	82 1/2"	13 1/2"	18 1/2"	27"	52"	5.56 to 1	1.5 to 1	2.55	2.8								
13 1/2"	4,000	10,000	14"	12 1/2"	9,200	36"	49 1/2"	33 1/2"	82 1/2"	13 1/2"	18 1/2"	27"	52"	5.56 to 1	1.5 to 1	2.55	2.8								
16"	2,000	8,000	16"	15 1/2"	8,500	36"	51"	35 1/2"	100 1/2"	16 1/2"	2"	22"	60"	5.56 to 1	1.77 to 1	2.8	3.2								

REEVES BROTHERS PETROLEUM 'A' LTD.

SURFACE DEVELOPMENT PLAN

WELL:

REEVES #2

LOCATION:

2310' FSL, 2310' FWL  
Sec. 26, T2N, R11W  
Catron County, New Mexico

LEASE NUMBER

NM-28932

1. Existing roads. (Shown in Green)

The attached topographic map shows all existing roads within 3 miles of the proposed location. All roads are in fair condition and will require a minimal amount of work to upgrade them to handle normal drilling activity traffic.

2. Planned access road.

None required.

3. Location of existing wells.

No other wells in area.

4. Location of existing production facilities.

None. All production facilities are to be contained within the proposed location.

5. Location and type of water supply.

Water for drilling will be trucked from ranch water hole, approximately 3 miles to the south. This water is privately owned.

6. Source of construction material.

Any construction material required for road or location will be excess material accumulated during building of such sites.

7. Methods of handling waste material.

(Refer to attached well site layout)  
All material that can be safely burned will be so disposed when weather permits. All nonburnable waste (drilling fluids, cuttings, chemicals, etc.) will be held in the reserve pit until dry, and then buried. Any oil that accumulates on the pit will be removed prior to leaving the pit to dry. Pits will be fenced during drying out, then completely back-filled with dirt prior to preparing the location for production or abandonment.

All solid waste that can not be buried will be taken from the location and properly destroyed. Portable chemical toilet will be supplied for human waste.

8. Ancillary facilities.

None planned.

9. Well site layout.

The attached layout shows the drilling rig with all supporting facilities. Cut and fill, required for pad construction, is also shown.

10. Plans for restoration of surface.

Restoration of the well site and access road will begin within 90 days of well completion, weather permitting.

Should the well be abandon, the drill site will be reshaped to its approximate former contour. The access road will be plowed and leveled. Both road and location will have top soil replaced and will be reseeded when germination can occur.

Should the well be commercial, that portion of location not needed for operation will be repaired as above. The portion of the location needed for daily production operations, and the access road, will be kept in good repair and clean.

In either case, cleanup of the site will include burning any safely burnable material, filling of all pits, and proper disposal of any nonburnable material that can be safely burned. Any oil that has accumulated on the pits will be trucked away.

11. Other information.

General topography of the area may be seen on the attached map.

This location is on fee owned surface. The area is generally flat. The area is sandy and is covered with sage brush and native grasses. There is evidence of cow and small animal life in the area.

Surface at this location belongs to Carole Roberson, Austin, Texas.

There are no occupied dwelling in the area.

There were no archaeological or cultural sites visible on the location. The archaeologist's report is forthcoming.



12.

Claude C. Kennedy  
Operators Agent  
4949 San Pedro, N.E.  
Suite 47  
Albuquerque, New Mexico 87109  
Phone: (505) 883-9624

13. I hereby certify that I or persons under my direct supervision, have inspected the proposed drill site and access route; that I am familiar with the conditions which presently exist; that the statements made in the plan are to the best of my knowledge, true and correct; and, that the work associated with the operations proposed herein will be performed by operator, and its contractors and subcontractors in conformity with this plan and the terms and conditions under which it is approved.

9-1-1978  
Date

  
Claude C. Kennedy  
Operators Agent

4949 SAN PEDRO, N.E.

SUITE 47

ALBUQUERQUE, NEW MEXICO 87109

PHONE (505) 883-9624

CLAUDE C. KENNEDY  
INDEPENDENT OIL AND GAS OPERATOR

August 31, 1978

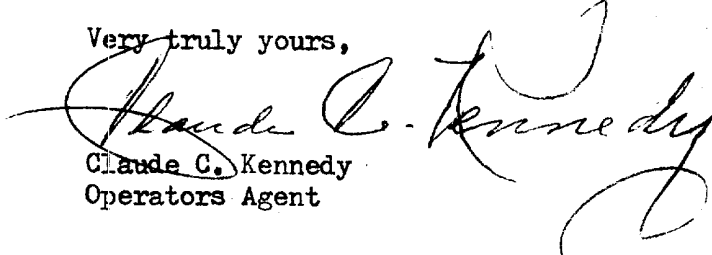
U. S. G. S.  
P.O. Box 959  
Farmington, New Mexico 87401

Gentlemen:

The drilling of the well as covered by the attached "Surface Development Plan" is being drilled on fee owned surface.

By "Verbal Agreement" well site clean up will be in accordance with U. S. G. S. regulations. Any damages to the land will be settled between the operator and land owner at such time as the drilling program is terminated.

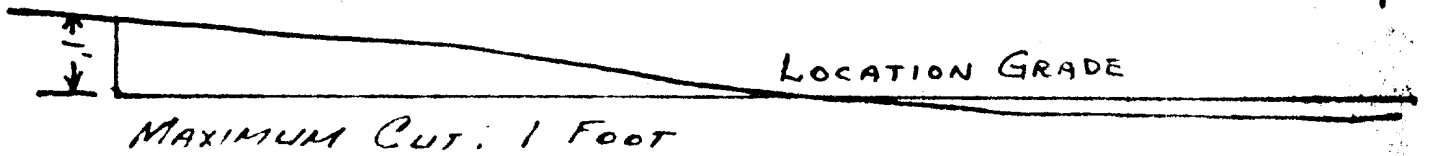
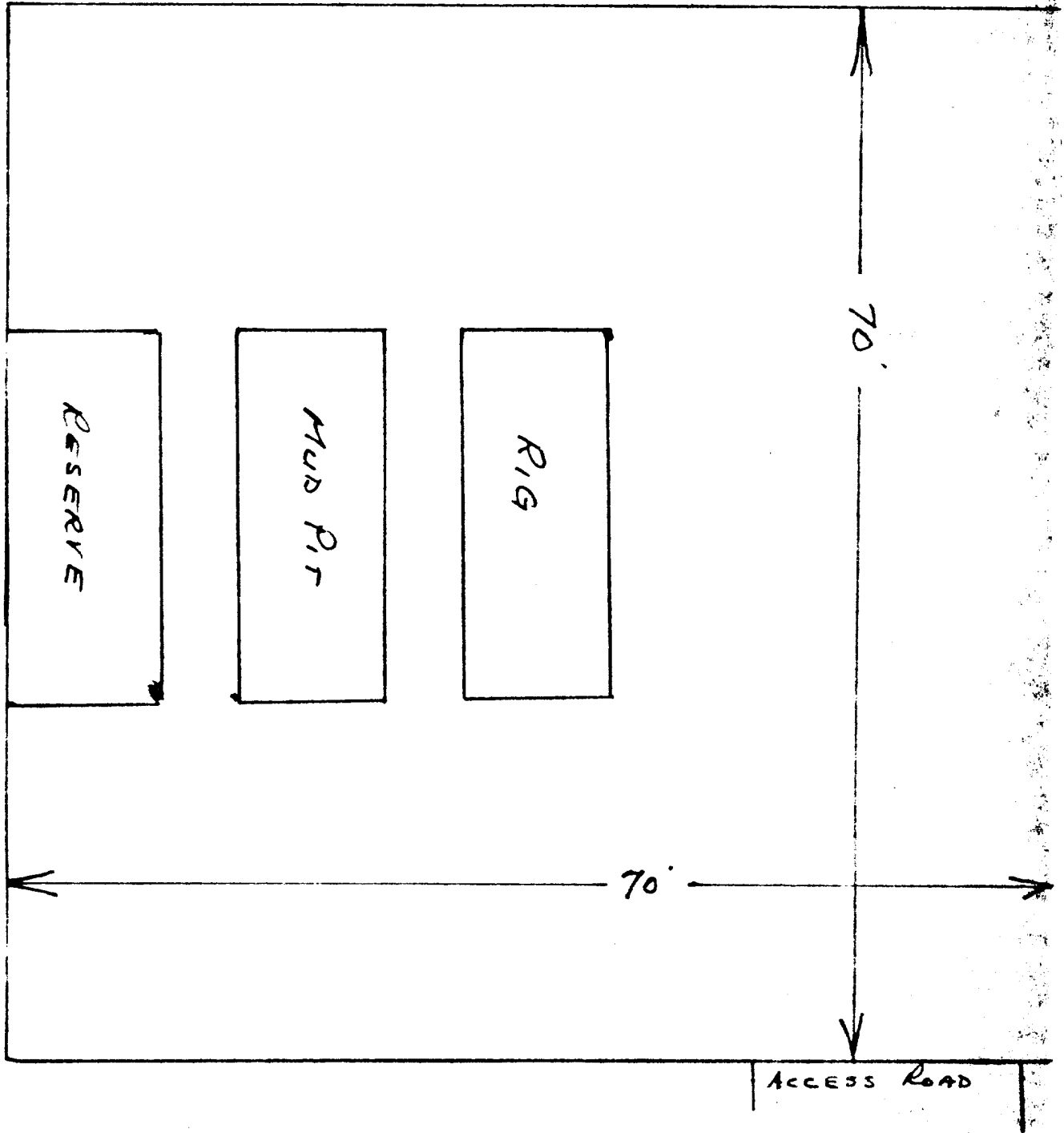
Very truly yours,



Claude C. Kennedy  
Operators Agent

N

# WELL SITE LAYOUT



SCALE 1 IN = 10 FEET