

API # 30-007-20032

NO. OF COPIES RECEIVED	
DISTRIBUTION	
SANTA FE	
FILE	
U.S.G.S.	
LAND OFFICE	
OPERATOR	

NEW MEXICO OIL CONSERVATION COMMISSION

Form C-101
Revised 1-1-65

JUN - 6 1977
NEW MEXICO OIL CONSERVATION COMMISSION

5A. Indicate Type of Lease
STATE FEE

5. State Oil & Gas Lease No.

APPLICATION FOR PERMIT TO DRILL, DEEPEN, OR PLUG BACK

1a. Type of Work
DRILL DEEPEN PLUG BACK

b. Type of Well
OIL WELL GAS WELL OTHER
SINGLE ZONE MULTIPLE ZONE

7. Unit Agreement Name

8. Farm or Lease Name
Phelps Dodge

2. Name of Operator
Bennett Petroleum Corporation

9. Well No.
1

3. Address of Operator
1776 Lincoln St., Suite 808, Denver, Colorado 80203

10. Field and Pool, or Wildcat
Wildcat

4. Location of Well
UNIT LETTER J LOCATED 1980 FEET FROM THE East LINE
AND 1980 FEET FROM THE South LINE OF SEC. 24 TWP. 28N RCP. 20E NMPM

11. County
Colfax



13. Proposed Depth 3200 19A. Formation Dakota 20. Rotary or C.T. Rotary

21. Elevations (Show whether DF, RT, etc.) 6366' GR 21A. Final & Status Plug Bond 21B. Drilling Contractor Superior Drilling Co. 22. Approx. Date Work will start June 1, 1977

23. PROPOSED CASING AND CEMENT PROGRAM

SIZE OF HOLE	SIZE OF CASING	WEIGHT PER FOOT	SETTING DEPTH	SACKS OF CEMENT	EST. TOP
13-5/8	10-3/4		150	Circ.	Niobrara, 1645
8-5/8	7		2000	--	Carlile, 2500
6-1/4	4-1/2		3100	150	Dakota, 2890
					Morrison, 3090
					T.D. 3140

APPROVAL VALID FOR 90 DAYS FROM DRILLING COMMENCED

EXPIRES 9/9/77

IN ABOVE SPACE DESCRIBE PROPOSED PROGRAM IF PROPOSAL IS TO DEEPEN OR PLUG BACK, GIVE DATA ON PRESENT PRODUCTIVE ZONE AND PROPOSED NEW PRODUCTIVE ZONE. GIVE BLOWOUT PREVENTER PROGRAM, IF ANY.

I hereby certify that the information above is true and complete to the best of my knowledge and belief.

Signed [Signature] Title President Date May 31, 1977

(This space for State Use)

APPROVED BY Carl Ulvog TITLE SENIOR PETROLEUM GEOLOGIST DATE 6/6/77

CONDITIONS OF APPROVAL, IF ANY:

NEW MEXICO OIL CONSERVATION COMMISSION
WELL LOCATION AND ACREAGE DEDICATION PLAT

Form C-102
 Supersedes C-128
 Effective 1-1-65

All distances must be from the outer boundaries of the Section.

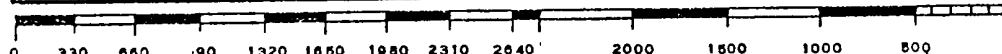
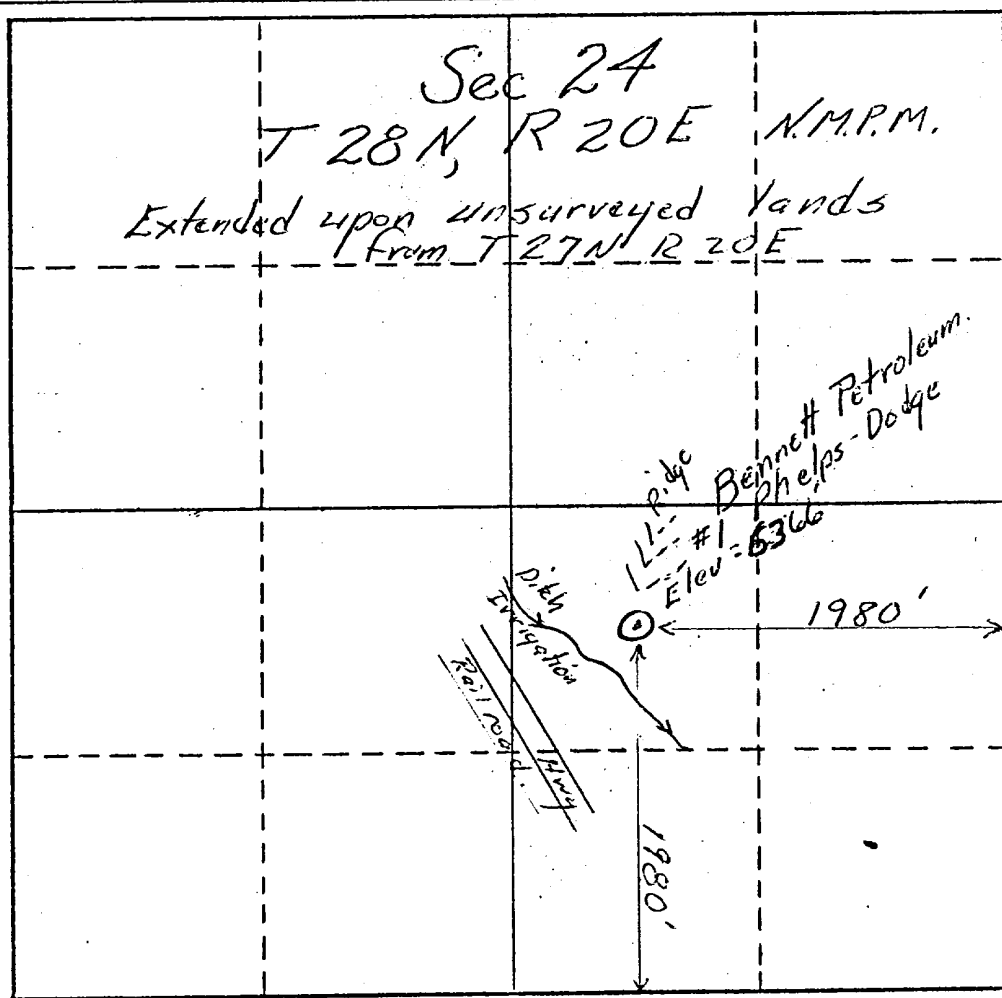
Operator Bennett Petroleum Corporation			Lease Phelps Dodge		Well No. 1
Unit Letter J	Section 24	Township 28 North	Range 20 East	County Colfax	
Actual Footage Location of Well: 1980 feet from the East line and 1980 feet from the South line					
Ground Level Elev. 5566	Producing Formation Dakota		Pool	Dedicated Acreage: 160.00 Acres	

1. Outline the acreage dedicated to the subject well by colored pencil or hachure marks on the plat below.
2. If more than one lease is dedicated to the well, outline each and identify the ownership thereof (both as to working interest and royalty).
3. If more than one lease of different ownership is dedicated to the well, have the interests of all owners been consolidated by communitization, unitization, force-pooling, etc?

Yes No If answer is "yes," type of consolidation _____

If answer is "no," list the owners and tract descriptions which have actually been consolidated. (Use reverse side of this form if necessary.) Phelps Dodge Corporation

No allowable will be assigned to the well until all interests have been consolidated (by communitization, unitization, forced-pooling, or otherwise) or until a non-standard unit, eliminating such interests, has been approved by the Commission.



CERTIFICATION
I hereby certify that the information contained herein is true and complete to the best of my knowledge and belief.
Name R. E. Bennett
Position President
Company Bennett Petroleum Corp.
Date May 27, 1977
I hereby certify that the well location shown on this plat was plotted from field notes of actual surveys made by me or under my supervision, and that the same is true and correct to the best of my knowledge and belief.
Date Surveyed May 18, 1977
<i>Bill E. Haffner</i> Registered Professional Engineer and/or Land Surveyor
N.M. 4002
Certificate No. 4002

NEW MEXICO OIL CONSERVATION COMMISSION
WELL LOCATION AND ACREAGE DEDICATION PLAT

Form C-102
Supersedes C-128
Effective 1-1-65

All distances must be from the outer boundaries of the Section.

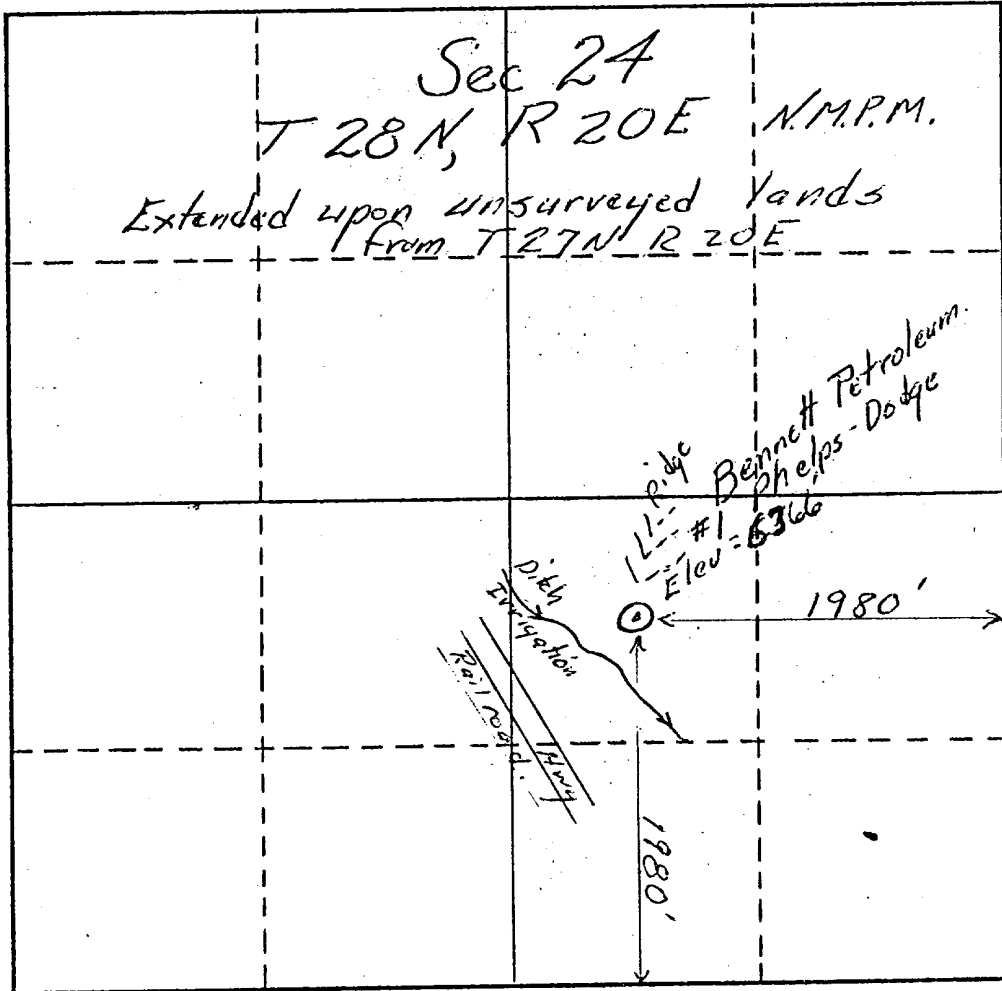
Operator Bennett Petroleum Corporation		Lease Phelps Dodge			Well No. 1
Unit Letter	Section 24	Township 28 North	Range 20 East	County Colfax	
Actual Footage Location of Well: 1980 feet from the East line and 1980 feet from the South line					
Ground Level Elev. 5566	Producing Formation Dakota	Pool	Dedicated Acreage: 160.00 Acres		

- Outline the acreage dedicated to the subject well by colored pencil or hachure marks on the plat below.
- If more than one lease is dedicated to the well, outline each and identify the ownership thereof (both as to working interest and royalty).
- If more than one lease of different ownership is dedicated to the well, have the interests of all owners been consolidated by communitization, unitization, force-pooling, etc?

Yes No If answer is "yes," type of consolidation _____

If answer is "no," list the owners and tract descriptions which have actually been consolidated. (Use reverse side of this form if necessary.) Phelps Dodge Corporation

No allowable will be assigned to the well until all interests have been consolidated (by communitization, unitization, forced-pooling, or otherwise) or until a non-standard unit, eliminating such interests, has been approved by the Commission.



CERTIFICATION

I hereby certify that the information contained herein is true and complete to the best of my knowledge and belief.

Name R. E. Bennett

Position President

Company
Bennett Petroleum Corp.

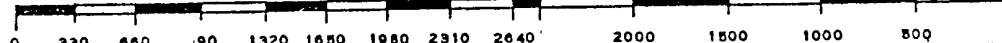
Date
May 27, 1977

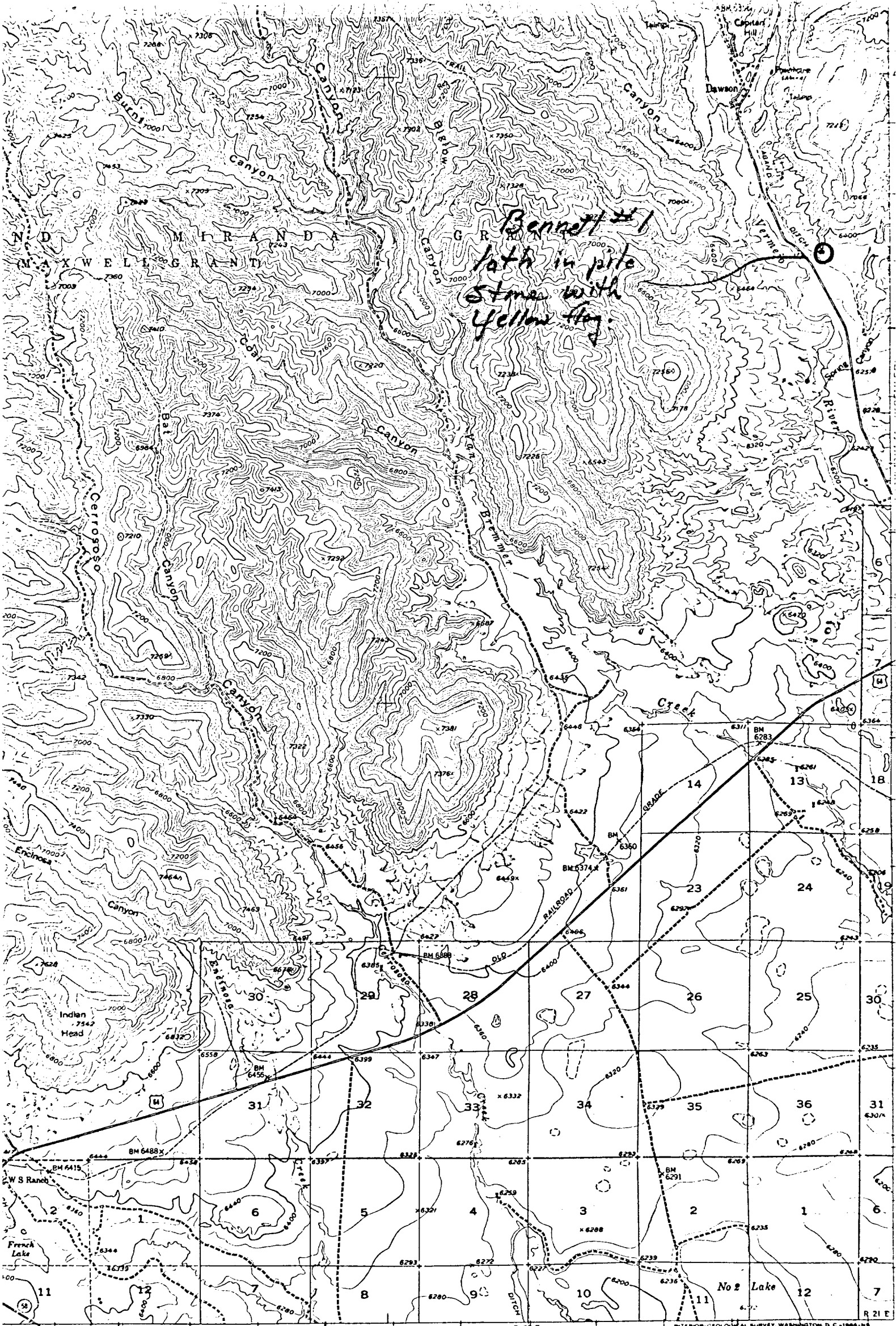
I hereby certify that the well location shown on this plat was plotted from field notes of actual surveys made by me or under my supervision, and that the same is true and correct to the best of my knowledge and belief.

Date Surveyed May 18, 1977

Bill E. Haver
Registered Professional Engineer and/or Land Surveyor

N.M. 4002
Certificate No.





*Bennett #1
lat in pile
stone with
yellow flag*

ROAD CLASSIFICATION