

30-021-20,018

Form 247-0  
(May 1969)

UNITED STATES  
DEPARTMENT OF THE INTERIOR  
GEOLOGICAL SURVEY

SUBJECT: Drill  
(Other justifications on  
reverse side)

Form approved,  
Budget Bureau No. 57-21425.

RECEIVED  
71

APPLICATION FOR PERMIT TO DRILL, DEEPEN, OR PLUG BACK

1. TYPE OF WORK

DRILL ☒

DEEPEN ☐

PLUG BACK ☐

2. TYPE OF WELL

OIL  
WELL ☒

GAS  
WELL ☐

OTHER ☐

SINGLE  
ZONE ☐

MULTIPLE  
ZONE ☐

3. NAME OF OPERATOR

HUMBLE OIL & REFINING COMPANY

4. ADDRESS OF OPERATOR

P. O. Box 1600, Midland, Texas 79701

5. LOCATION OF WELL (Report location clearly and in accordance with any State requirements.)\*

At surface

1,998.7' FWL & 350' FSL

At proposed prod. zone

Same

6. DISTANCE IN MILES AND DIRECTION FROM NEAREST TOWN OR POST OFFICE\*

30 miles Northwest Naravisa, New Mexico

7. DISTANCE FROM PROPOSED\*

LOCATION TO NEAREST  
PROPERTY OR LEASE LINE, FT.

(Also to nearest dril. unit line, if any)

350'

350'

8. DISTANCE FROM PROPOSED LOCATION\*

TO NEAREST WELL, DRILLING, COMPLETED,  
OR APPLIED FOR, ON THIS LEASE, FT.

None

9. NO. OF ACRES IN LEASE

2,160.69

10. PROPOSED DEPTH

2,000

11. NO. OF ACRES ASSIGNED  
TO THIS WELL

40

12. ROTARY OR CABLE TOOLS

Rotary

13. ELEVATIONS (Show whether DP, RT, GR, etc.)

To be filed later.

14. APPROX. DATE WORK WILL START\*

8-13-71

15. PROPOSED CASING AND CEMENTING PROGRAM

SIZE OF HOLE	SIZE OF CASING	WEIGHT PER FOOT	SETTING DEPTH	QUANTITY OF CEMENT
9 5/8"	7" or 7 5/8"	20# or 21#	100'	50 sx. circ. to surface
6 1/4" or 6 3/4"	2 7/8" or 1 1/2"	6.5# or 9.5#	2,000'	Approx. 200 sx. *

\* Sufficient quantity of Portland Cement to raise cement to 1000' below surface.

Minimum fresh water gel mud for samples and logging.

HOWCO method of cementing to be used.

IN ABOVE SPACE DESCRIBE PROPOSED PROGRAM: If proposal is to deepen or plug back, give data on present productive zone and proposed new productive zone. If proposal is to drill or deepen directionally, give pertinent data on subsurface locations and measured and true vertical depths. Give blowout preventer program, if any.

24.

SIGNED

*A. L. Clemmer*  
D. L. CLEMMER

TITLE Proration Specialist

DATE 8-9-71

(This space for Federal or State check use)

PERMIT NO.

APPROVAL DATE

APPROVED BY

TITLE

DATE

CONDITION OF APPROVAL, IF ANY:

\*See Instructions On Reverse Side

NEW MEXICO OIL CONSERVATION COMMISSION  
WELL LOCATION AND ACREAGE DEDICATION PLAT

Form C-137  
Supersedes C-126  
Effective 1-1-65

All distances must be from the corner least turned of the Section

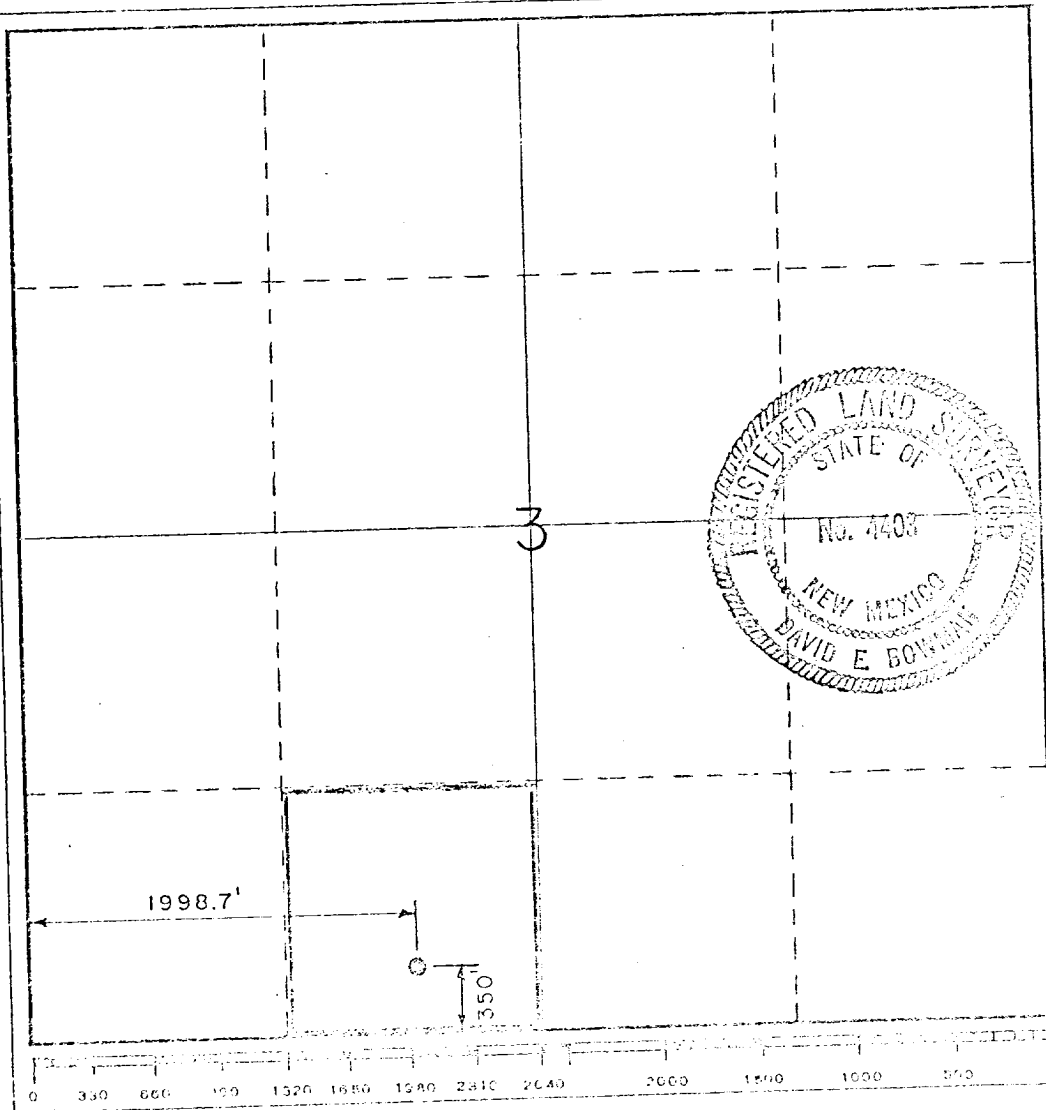
Operator <b>Humble Oil &amp; Refining Co.</b>		Location		Well No.
Unit Locality	Section <b>3</b>	Township <b>T19N</b>	Range <b>R 32E</b>	County <b>Harding</b>
Actual Footage Location of Well:				
<b>1998.7</b>	feet from the <b>West</b> line on	<b>350</b>	feet from the <b>South</b> line	Dedicated Acreage
Ground Level Elev. <b>4770</b>	Producing Formation	Depth	Acres	

1. Outline the acreage dedicated to the subject well by colored pencil or hatchure marks on the plat below.
2. If more than one lease is dedicated to the well, outline each and identify the ownership thereof (both as to working interest and royalty).
3. If more than one lease of different ownership is dedicated to the well, have the interests of all owners been consolidated by communitization, unitization, force-pooling, etc?

☐ Yes ☐ No If answer is "yes," type of consolidation \_\_\_\_\_

If answer is "no," list the owners and tract descriptions which have actually been consolidated. (Use reverse side of this form if necessary.) \_\_\_\_\_

No allowable will be assigned to the well until all interests have been consolidated (by communitization, unitization, forced-pooling, or otherwise) or until a non-standard unit, eliminating such interests, has been approved by the Commission.



CERTIFICATION

I hereby certify that the information contained herein is true and complete to the best of my knowledge and belief.

Name \_\_\_\_\_  
Position \_\_\_\_\_  
Survey \_\_\_\_\_  
Date \_\_\_\_\_

**Ballew & Associates, P.A.**

I hereby certify that the well location shown on this plat was plotted from field notes of actual surveys made by me or under my supervision, and that the same is true and correct to the best of my knowledge and belief.

David E. Bowman

Date Surveyed  
**July 30, 1971**

Registered Professional Engineer and/or Land Surveyor

Land Surveyor

Certificate No.  
**N.M.R.L.S. No. 4403**