

NO. OF COPIES RECEIVED	
DISTRIBUTION	
SANTA FE	
FILE	
U.S.G.S.	
LAND OFFICE	
OPERATOR	

NEW MEXICO OIL CONSERVATION COMMISSION

Form C-101  
Revised 1-1-85

API #  
30-519-20189

5A. Indicate Type of Lease  
STATE  FCC

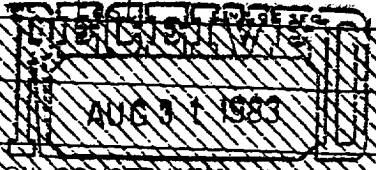
5. State Oil & Gas Lease No.

APPLICATION FOR PERMIT TO DRILL, DEEPEN, OR PLUG BACK

1a. Type of Work  
1. Type of Well DRILL  DEEPEN  PLUG BACK   
OIL WELL  GAS WELL  CO2 OTHER   
2. Name of Operator Amoco Production Company  
3. Address of Operator P. O. Box 68, Hobbs, New Mexico 88240  
4. Location of Well UNIT LETTER G LOCATED 1650 FEET FROM THE North LINE AND 1650 FEET FROM THE TWP. 18-N. SEC. 35-F NMPM

7. Unit Agreement Name BDCDGU  
8. Form of Lease Name BDCDGU  
9. Well No. 1835 061G  
10. Field and Pool, or Wildcat Und. Tubb

11. Proposed Depth 2900'  
19A. Formation Tubb  
20. Rotary or C.C. Rotary  
21A. Kick & Status Plug. Bond Blanket on File  
21B. Drilling Contractor N/A  
22. Approx. Date Work will start 4th Quarter-1983



12. Country Union

SIZE OF HOLE	SIZE OF CASING	WEIGHT PER FOOT	SETTING DEPTH	SACKS OF CEMENT	EST. TOP
12-1/4"	9-5/8"	32.30#	700'	Circ.	Surface
8-3/4"	7"	15.#-20.#	2900'	Tieback to 9-5/8"	Surface

PROPOSED CASING AND CEMENT PROGRAM

Propose to drill and equip well in the Tubb formation. After reaching TD logs will be run and evaluated. Perforate and stimulate as necessary in attempting commercial production.

Mud Program: 0-700' Native Spud Mud  
700'-TD KCL-Salt Water Gel-Starch

BOP program attached  
Gas is not dedicated

APPROVAL VALID FOR 90 DAYS  
PERMIT EXPIRES 11-29-83  
UNLESS DRILLING UNDERWAY

0+2-NMOCD, SF; 1-HOU R. E. Ogden Rm 21.150; 1-SUSP; 1-PJS; 1-Amerada; 1-Amerigas;  
1-Cities Service; 1-Conoco; 1-CO2 in Action; 1-Excelsior; 1-Sun. Tex.; 1-Exxon;  
1-Jim Russell, Clayton; 1-F. J. Nash, HOU Rm 4.206

IN ABOVE SPACE DESCRIBE PROPOSED PROGRAM; IF PROPOSAL IS TO DEEPEN OR PLUG BACK, GIVE DATA ON PRESENT PRODUCTIVE ZONE AND PROPOSED NEW PRODUCTIVE ZONE. GIVE BLOWOUT PREVENTER PROGRAM, IF ANY.

I hereby certify that the information above is true and complete to the best of my knowledge and belief.  
Signed Peter J. Serna Title Assistant Administrative Analyst Date 8/29/83

APPROVED BY Roy E. Johnson TITLE OIL AND GAS INSPECTOR DATE 8/31/83

OIL CONSERVATION COMMISSION TO BE NOTIFIED WITHIN 24 HOURS OF BEGINNING OPERATIONS

NEW MEXICO OIL CONSERVATION COMMISSION  
WELL LOCATION AND ACREAGE DEDICATION PLAT

Form C-102  
Supersedes C-128  
Effective 1-1-65

All distances must be from the outer boundaries of the Section.

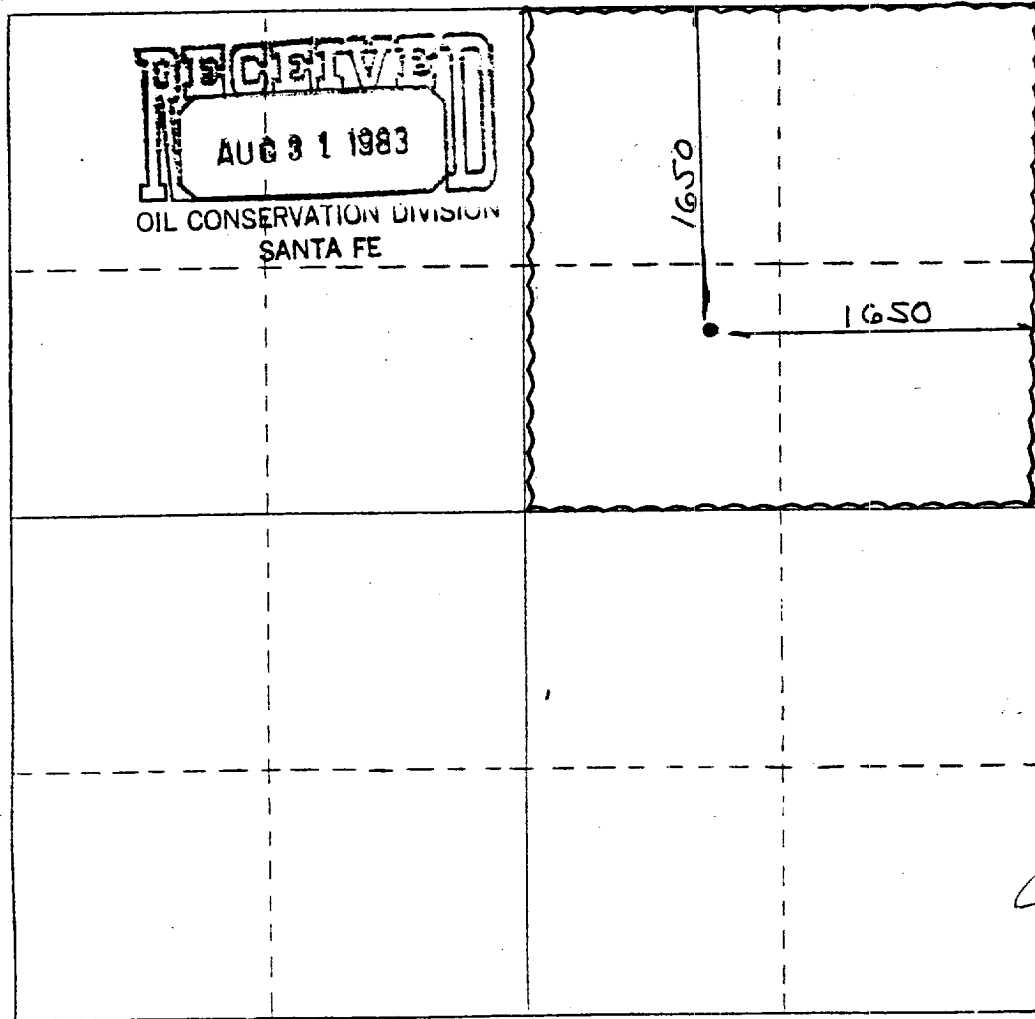
Operator <b>AMOCO PRODUCTION COMPANY</b>			Lease		Well No. <b>1835061G</b>
Unit Letter <b>G</b>	Section <b>6</b>	Township <b>T18N</b>	Range <b>R35E</b>	County <b>UNION</b>	
Actual Footage Location of Well: <b>1650</b> feet from the <b>NORTH</b> line and <b>1650</b> feet from the <b>EAST</b> line					
Ground Level Elev. <b>4680</b>	Producing Formation <b>Tubb</b>		Pool <b>Und. Tubb</b>	Dedicated Acreage: <b>160</b> Acres	

1. Outline the acreage dedicated to the subject well by colored pencil or hachure marks on the plat below.
2. If more than one lease is dedicated to the well, outline each and identify the ownership thereof (both as to working interest and royalty).
3. If more than one lease of different ownership is dedicated to the well, have the interests of all owners been consolidated by communitization, unitization, force-pooling, etc?

Yes  No If answer is "yes," type of consolidation \_\_\_\_\_

If answer is "no," list the owners and tract descriptions which have actually been consolidated. (Use reverse side of this form if necessary.) \_\_\_\_\_

No allowable will be assigned to the well until all interests have been consolidated (by communitization, unitization, forced-pooling, or otherwise) or until a non-standard unit, eliminating such interests, has been approved by the Commission.



**RECEIVED**  
**AUG 31 1983**  
OIL CONSERVATION DIVISION  
SANTA FE

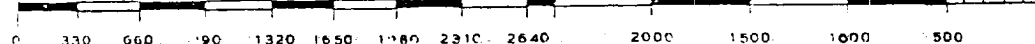
CERTIFICATION

I hereby certify that the information contained herein is true and complete to the best of my knowledge and belief.

Name Peter J. Seneca  
Position Asst. Admin. Analyst  
Company Amoco Production Company  
Date August 29, 1983

I hereby certify that the well location shown on this plat was plotted from field notes of actual surveys made by me or under my supervision, and that the same is true and correct to the best of my knowledge and belief.

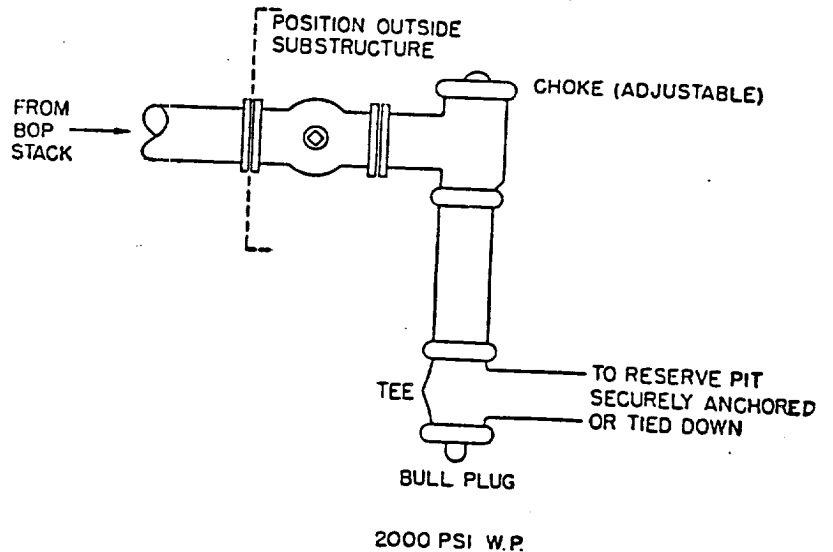
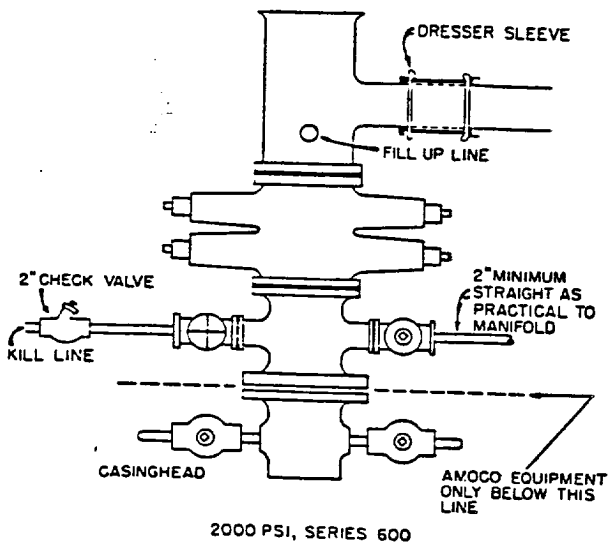
AUG 31 1983  
Date  
Registered Professional Engineer and/or Land Surveyor  
**LEE E. SHIELDS**  
No. 5103  
N.M.L.S. 5103  
Certificate No.



STANDARD 2000 PSI W.P. BOP STACK

1. Blow-out preventers may be manually operated.
2. All equipment must be in good condition, 2,000 psi W.P. (4,000 psi test) minimum.
3. Bell nipple above blow-out preventer shall be same size as casing being drilled through.
4. Kelly cock to be installed on kelly.
5. Full opening safety valve 2,000 psi w.p. (4,000 psi test) minimum must be available on rig floor at all times with proper connection or subs to fit any tool joint in string.
6. Spool or cross may be eliminated if connections are available in the lower part of the blow-out preventer body.
7. Double or space saver type preventers may be used in lieu of two single preventers.
8. BOP rams to be installed as follows:
  - Top preventer - Drill pipe or casing rams
  - Bottom preventer - Blind rams

\*Amoco District Superintendent may reverse location of rams.
9. Extensions and hand wheels to be installed and braced at all times.
10. Manifold valves may be gate or plug metal to metal seal 2" minimum.



NEW MEXICO OIL CONSERVATION COMMISSION  
WELL LOCATION AND ACREAGE DEDICATION PLAT

Form C-102  
Supersedes C-124  
Effective 1-1-65

All distances must be from the outer boundaries of the Section

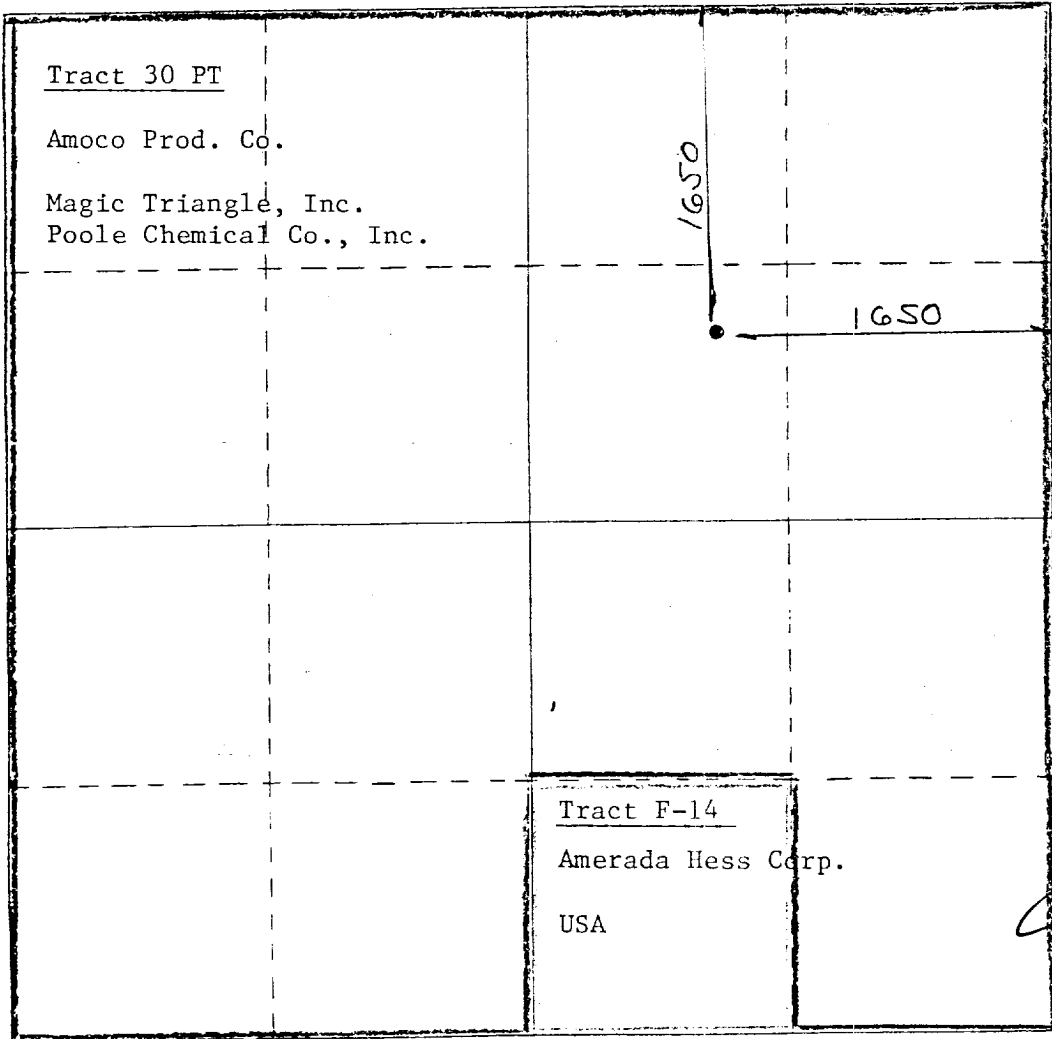
Operator AMOCG PRODUCTION COMPANY		Lease Bravo Dome Carbon Dioxide Gas Unit		Well No. 1835061G
Unit Letter G	Section 6	Township T18N	Range R35E	County UNION
Actual Footage Location of Well: 1650 feet from the NORTH line and 1650 feet from the EAST line				
Ground Level Elev. 4680	Producing Formation Tubb	Pool Bravo Dome 640 Acre Area		Dedicated Acreage: 640 Acres

1. Outline the acreage dedicated to the subject well by colored pencil or hachure marks on the plat below.
2. If more than one lease is dedicated to the well, outline each and identify the ownership thereof (both as to working interest and royalty).
3. If more than one lease of different ownership is dedicated to the well, have the interests of all owners been consolidated by communitization, unitization, force-pooling, etc?

Yes  No If answer is "yes," type of consolidation Pooling Declaration

If answer is "no," list the owners and tract descriptions which have actually been consolidated. (Use reverse side of this form if necessary.) \_\_\_\_\_

No allowable will be assigned to the well until all interests have been consolidated (by communitization, unitization, forced-pooling, or otherwise) or until a non-standard unit, eliminating such interests, has been approved by the Commission.



CERTIFICATION

I hereby certify that the information contained herein is true and complete to the best of my knowledge and belief.

Name: John L. McElyea  
 Position: Asst. Adm. Analyst  
 Company: Amoco Production Company  
 Date: 9-12-84

I hereby certify that the well location shown on this plat was plotted from field notes of actual surveys made by me or under my supervision, and that the same is true and correct to the best of my knowledge and belief.

AUG. 14, 1983  
 Date Surveyed: \_\_\_\_\_  
 Registered Professional Engineer and/or Land Surveyor: [Signature]  
 N.M.L.S. NO: 15103  
 Certificate No. \_\_\_\_\_

