

NO. OF COPIES RECEIVED	
DISTRIBUTION	
SANTA FE	1
FILE	1
U.S.G.S.	2
LAND OFFICE	1
OPERATOR	1

P. O. BOX 2088

SANTA FE, NEW MEXICO 87501

APT # 30-059-20244

5A. Indicate Type of Lease
 STATE FCC
 5. State Oil & Gas Lease No.

APPLICATION FOR PERMIT TO DRILL, DEEPEN, OR PLUG BACK

1a. Type of Work
 b. Type of Well DRILL DEEPEN PLUG BACK
 OIL WELL GAS WELL CO2 OTHER SINGLE ZONE MULTIPLE ZONE

2. Name of Operator
 Amoco Production Company

3. Address of Operator
 P. O. Box 606, Clayton, New Mexico 88415

4. Location of Well UNIT LETTER G LOCATED 1650 FEET FROM THE North LINE
 AND 1650 FEET FROM THE East LINE OF SEC. 11 TWP. 18N R.C.C. 34E N.M.P.M.

7. Unit Agreement Name
 BDCDGU

8. Farm or Lease Name
 BDCDGU

9. Well No.
 1834-111G

10. Field and Pool, or Wildcat
 Bravo Dome 640 Acre Area

17. County
 Union

19. Proposed Depth
 2900'

15A. Formation
 Tubb

20. Rotary or C.T.
 Rotary

21. Elevations (Show whether DF, HI, etc.)
 4800' GL

21A. Kind & Status Plug. Bond
 Blanket-on-file

21B. Drilling Contractor
 N/A

22. Approx. Date Work will start
 August, 1984

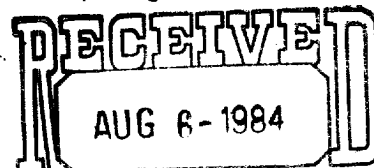
PROPOSED CASING AND CEMENT PROGRAM

SIZE OF HOLE	SIZE OF CASING	WEIGHT PER FOOT	SETTING DEPTH	SACKS OF CEMENT	EST. TOP
12-1/4"	9-5/8"	32.30#	700'	Circulate	surface
8-3/4"	7"	15, 20#	2900'	Tieback to 9-5/8"	surface

Propose to drill and equip well in the Tubb formation. After reaching TD logs will be run and evaluated. Perforate and stimulate as necessary in attempting commercial production.

Mud Program: 0 - 700' Native Spud Mud
700 - TD KCL Salt Water Gel-Starch

BOP Diagram attached.



APPROVAL VALID FOR 180 DAYS OIL CONSERVATION DIVISION
PERMIT EXPIRES 2-2-85 SANTA FE
LESS DRILLING UNDERWAY

0+5-NMOCD,SF 1-J. R. Barnettt, HOU Rm. 21.156 1-F. J. Nash, HOU Rm. 4.206 1-WF, C 1-WF, P
1-Susp, 1-JSM, 1-Amerada 1-Amerigas 1-Cities Service 1-Conoco 1-CO2 in Action 1-Sun
1-Excelsior 1-Tex 1-Exxon

4. ABOVE SPACE DESCRIBE PROPOSED PROGRAM; IF PROPOSAL IS TO DEEPEN OR PLUG BACK, GIVE DATA ON PRESENT PRODUCTIVE ZONE AND PROPOSED NEW PRODU-
TIVE ZONE. GIVE BLOWOUT PREVENTER PROGRAM, IF ANY.

I hereby certify that the information above is true and complete to the best of my knowledge and belief.

Signed John A. McEliza Title Assist. Admin. Analyst Date 8-3-84

APPROVED BY Roy Johnson TITLE DISTRICT SUPERVISOR DATE 8-6-84

CONDITIONS OF APPROVAL, IF ANY:

NEW MEXICO OIL CONSERVATION COMMISSION
WELL LOCATION AND ACREAGE DEDICATION PLAT

Form C-102
Supersedes C-124
Effective 1-1-65

All distances must be from the outer boundaries of the Section.

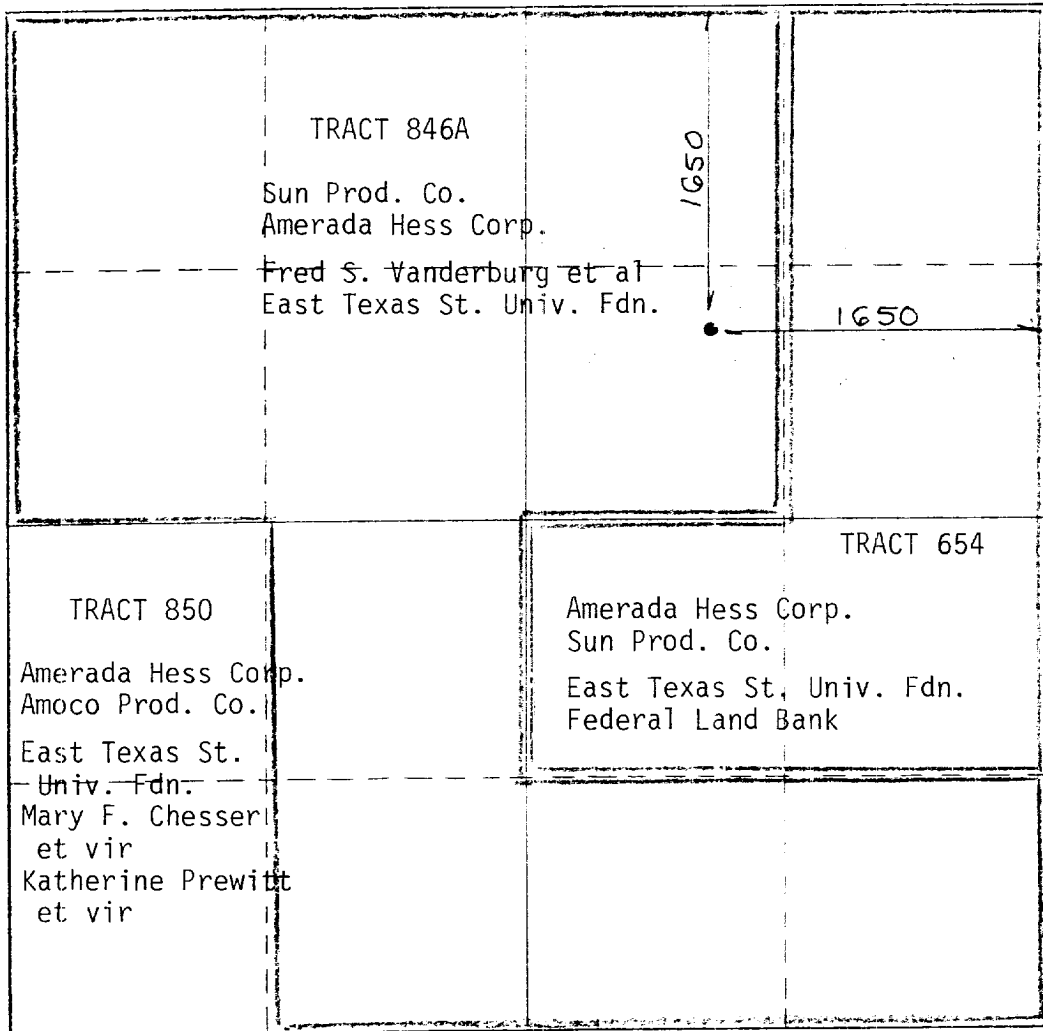
Operator AMOCO			Lease Bravo Dome Carbon Dioxide Gas Unit		Well No. 1834111G
Unit Letter G	Section 11	Township T18N	Range R34 E	County UNION	
Actual Footage Location of Well: 1650 feet from the NORTH line and 1650 feet from the EAST line					
Ground Level Elev. 4800	Producing Formation Tubb		Pool Bravo Dome 640-acre area	Dedicated Acreage: 640 Acres	

1. Outline the acreage dedicated to the subject well by colored pencil or hachure marks on the plat below.
2. If more than one lease is dedicated to the well, outline each and identify the ownership thereof (both as to working interest and royalty).
3. If more than one lease of different ownership is dedicated to the well, have the interests of all owners been consolidated by communitization, unitization, force-pooling, etc?

Yes No If answer is "yes?" type of consolidation Pooling Declaration

If answer is "no?" list the owners and tract descriptions which have actually been consolidated. (Use reverse side of this form if necessary.) _____

No allowable will be assigned to the well until all interests have been consolidated (by communitization, unitization, forced-pooling, or otherwise) or until a non-standard unit, eliminating such interests, has been approved by the Commission.



CERTIFICATION

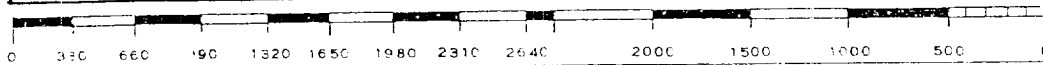
I hereby certify that the information contained herein is true and complete to the best of my knowledge and belief.

Name: John D. McElya
 Position: Assist. Admin. Analyst
 Company: Amoco Production Company
 Date: 7-20-84

I hereby certify that the well location shown on this plat was plotted from field notes of actual surveys made by me or under my supervision, and that the same is true and correct to the best of my knowledge.

Date Surveyed: _____
 Registered Professional Engineer and/or Surveyor

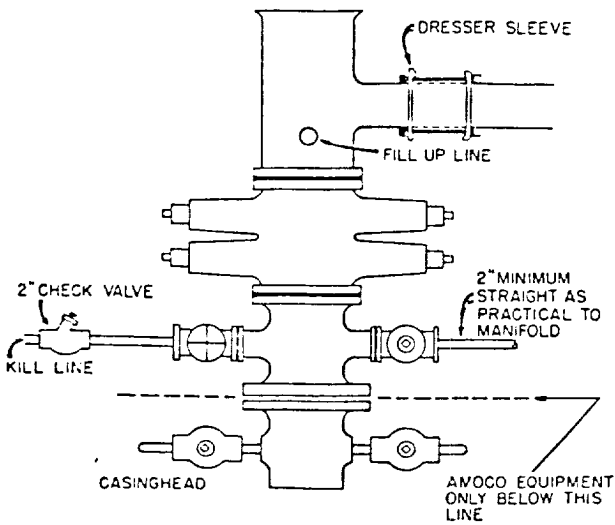
N. M. C. 5103
 Certificate No. _____



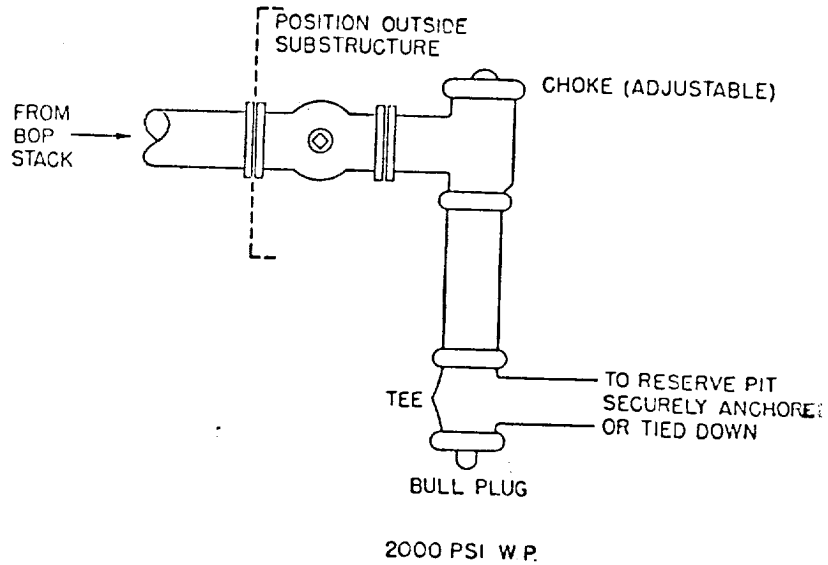
STANDARD 2000 PSI W.P. BOP STACK

1. Blow-out preventers may be manually operated.
2. All equipment must be in good condition, 2,000 psi W.P. (4,000 psi test) minimum.
3. Bell nipple above blow-out preventer shall be same size as casing being drilled through.
4. Kelly cock to be installed on kelly.
5. Full opening safety valve 2,000 psi w.p. (4,000 psi test) minimum must be available on rig floor at all times with proper connection or subs to fit any tool joint in string.
6. Spool or cross may be eliminated if connections are available in the lower part of the blow-out preventer body.
7. Double or space saver type preventers may be used in lieu of two single preventers.
8. BOP rams to be installed as follows:
 - Top preventer - Drill pipe or casing rams
 - Bottom preventer - Blind rams

*Amoco District Superintendent may reverse location of rams.
9. Extensions and hand wheels to be installed and braced at all times.
10. Manifold valves may be gate or plug metal to metal seal 2" minimum.



2000 PSI, SERIES 600



2000 PSI W.P.