

NO. OF COPIES RECEIVED	
DISTRIBUTION	
DATE FILE	
FILE	
U.S.G.S.	
LAND OFFICE/	
OPERATOR	

NEW MEXICO OIL CONSERVATION COMMISSION

Form C-101  
Revised 1-1-65

API #30-061-20019

APPLICATION FOR PERMIT TO DRILL, DEEPEN, OR PLUG BACK

1a. Type of Work

b. Type of Well DRILL  DEEPEN  PLUG BACK

OIL WELL  GAS WELL  OTHER

SINGLE ZONE  MULTIPLE ZONE

2. Name of Operator  
BRANA CORPORATION

3. Address of Operator  
1223 First Interstate Bldg, 320 Gold Ave. SW, Albuquerque, NM 87102

4. Location of Well  
UNIT LETTER G LOCATED 2490 FEET FROM THE North LINE  
AND 2330 FEET FROM THE East LINE OF SEC. 19 TWP. 6N RGE. 2W NMPM

5A. Indicate Type of Lease  
STATE  FFE

5. State Oil & Gas Lease No.

7. Unit Agreement Name

8. Farm or Lease Name  
Penteco-Trinity

9. Well No.  
1-X

10. Field and Pool, or Wildcat  
Wildcat

12. County  
Valencia

19. Proposed Depth  
3000'

19A. Formation  
Pennsylvanian

20. Rotary or C.T.  
Rotary

21. Elevations (Show whether DE, RT, etc.)  
5572 Grnd.

21A. Kind & Status Plug. Bond  
Blanket

21B. Drilling Contractor  
Salazar Bros. Drilling

22. Approx. Date Work will start  
Dec. 26, 1984

23. PROPOSED CASING AND CEMENT PROGRAM

SIZE OF HOLE	SIZE OF CASING	WEIGHT PER FOOT	SETTING DEPTH	SACKS OF CEMENT	EST. TOP
12 1/4	8 5/8	32	400	180-Sufficient	to circ.
6 3/4	4 1/2	11	3000	200	1500'

Plan to spud 12 1/4" hole and drill to 405' and set 400' of 8 5/8" casing with sufficient cement to circulate to surface. Drill 6 3/4" hole to 3000' or depth sufficient to test the Pennsylvanian formation and run appropriate logs. Zones of significant interest will be tested by D.S.T. when penetrated. If production is indicated, 4 1/2" casing will be run to total depth, cemented with 200 sxs, perforated and stimulated if required.

Double Gate Hydraulic BOP tested to 3000 psi will be on well during all drilling operations.

APPROVAL VALID FOR 90 DAYS  
PERMIT EXPIRES 6-19-85  
UNLESS DRILLING UNDERWAY

THE ABOVE SPACE DESCRIBE PROPOSED PROGRAM: IF PROPOSAL IS TO DEEPEN OR PLUG BACK, GIVE DATA ON PRESENT PRODUCTIVE ZONE AND PROPOSED NEW PRODUCTION ZONE; LIVE BLOWOUT PREVENTER PROGRAM, IF ANY.

I hereby certify that the information above is true and complete to the best of my knowledge and belief.

Signed Morris B. Jones Title Morris B. Jones, Engineer Date 12-27-84

APPROVED BY Roy E Johnson TITLE DISTRICT SUPERVISOR DATE 3-18-85

CONDITIONS OF APPROVAL, IF ANY: USL must be approved prior to assignment of allowable

NEW MEXICO OIL CONSERVATION COMMISSION  
 WELL LOCATION AND ACREAGE DEDICATION PLAT

Form C-102  
 Supersedes C-128  
 Effective 1-1-65

All distances must be from the outer boundaries of the Section.

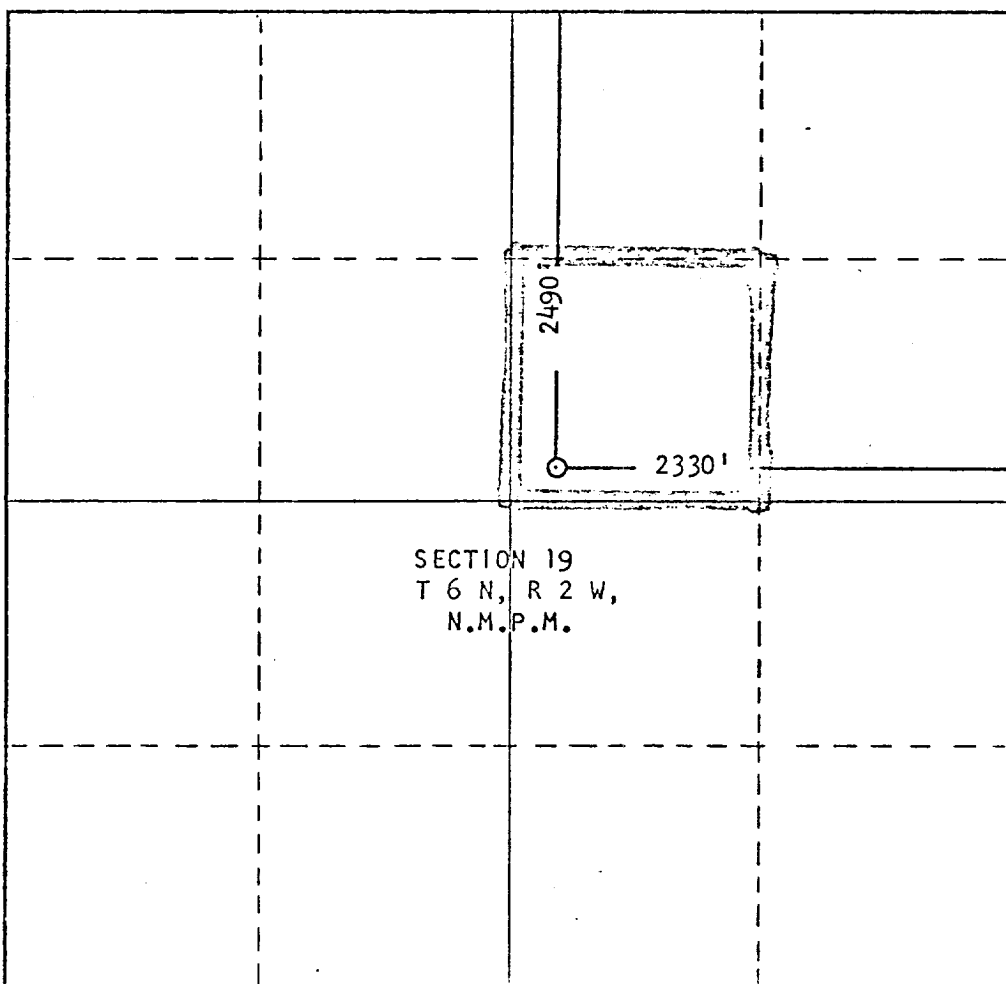
Operator <b>BRANA CORPORATION</b>		Lease <b>Penteco-Trinity</b>			Well No. <b>1-X</b>
Unit Letter <b>G</b>	Section <b>19</b>	Township <b>6North</b>	Range <b>2 West</b>	County <b>Valencia</b>	
Actual Footage Location of Well: <b>2490'</b> feet from the <b>North</b> line and <b>2330'</b> feet from the <b>East</b> line					
Ground Level Elev. <b>5572</b>	Producing Formation <b>Pennsylvanian</b>		Pool <b>Wildcat</b>	Dedicated Acreage: <b>40.00</b> Acres	

- Outline the acreage dedicated to the subject well by colored pencil or hachure marks on the plat below.
- If more than one lease is dedicated to the well, outline each and identify the ownership thereof (both as to working interest and royalty).
- If more than one lease of different ownership is dedicated to the well, have the interests of all owners been consolidated by communitization, unitization, force-pooling, etc?

Yes  No If answer is "yes," type of consolidation \_\_\_\_\_

If answer is "no," list the owners and tract descriptions which have actually been consolidated. (Use reverse side of this form if necessary.) \_\_\_\_\_

No allowable will be assigned to the well until all interests have been consolidated (by communitization, unitization, forced-pooling, or otherwise) or until a non-standard unit, eliminating such interests, has been approved by the Commission.



CERTIFICATION

I hereby certify that the information contained herein is true and complete to the best of my knowledge and belief.

*Morris B. Jones*  
 Morris B. Jones  
 Position  
 Engineer  
 Company  
 Brana Corporation

Date  
 12-27-84

I hereby certify that the well location shown on this plat was plotted from field notes of actual surveys made by me or under my supervision, and that the same is true and correct to the best of my knowledge and belief.

Date Surveyed

Registered Professional Engineer and/or Land Surveyor

Certificate No.

