

Chevron
U.S.A. Inc.

Salado Draw T26S R32E Recycling Facility and Containment

Appendix 4 – Recycling Containment Engineering Drawings



RECEIVED

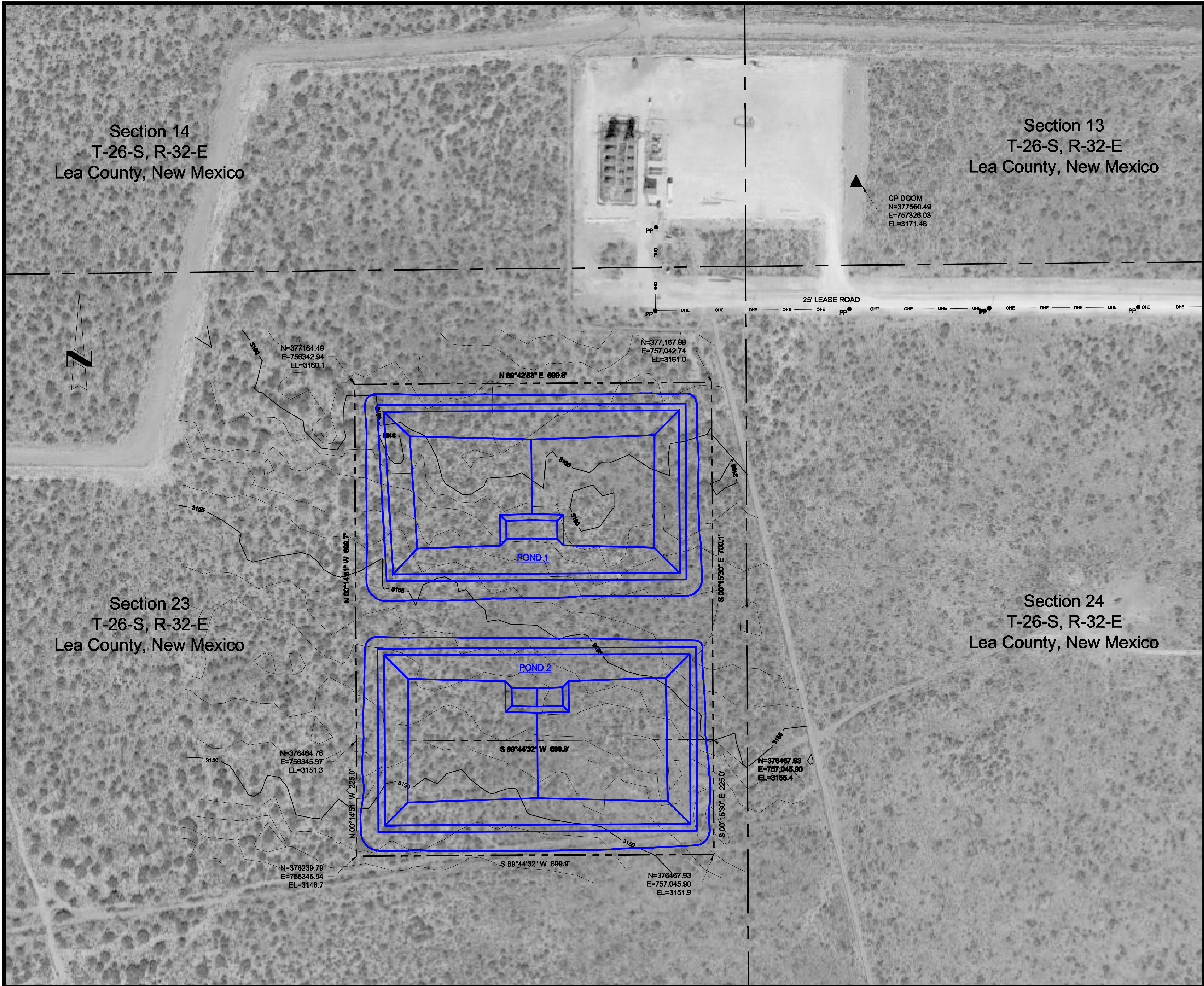
By OCD Dr Oberding at 10:13 am, Dec 16, 2016

A map of Lea County, New Mexico, showing its irregular boundaries. The county is labeled "LEA COUNTY" in the center. A north arrow is located in the top left corner. The county is shaded with diagonal lines.

SHEET	C-1	COVER SHEET
SHEET	C-2	EXISTING SITE CONDITIONS
SHEET	C-3	POND 1 AND POND 2 EXCAVATION PLAN
SHEET	C-4	POND 1 AND POND 2 COMPLETION PLAN
SHEET	C-5	POND 1 CROSS-SECTIONS
SHEET	C-6	POND 2 CROSS-SECTIONS
SHEET	C-7	POND 1 AND POND 2 LINER DETAILS
SHEET	C-8	POND 1 SUMP SECTIONS AND RISER DETAILS
SHEET	C-9	POND 2 SUMP SECTIONS AND RISER DETAILS
SHEET	C-10	POND 1 AND POND 2 SUMP PIPING PLAN
SHEET	C-11	POND 1 AND POND 2 PIPE STAND DETAILS
SHEET	C-12	SAFETY AND SECURITY PLAN AND DETAILS
SHEET	C-13	SAFETY AND SECURITY PLAN AND DETAILS
SHEET	C-14	MISCELLANEOUS DETAILS
SHEET	C-15	POND 1 AND POND 2 BELOW GRADE STAKING PLAN
SHEET	C-16	POND 1 AND POND 2 ABOVE GRADE STAKING PLAN

1. **ALL TOPOGRAPHIC, UTILITY AND CONTROL POINT LOCATION INFORMATION IS BASED ON SURVEY INFORMATION FURNISHED BY THE OWNER, THE CONTRACTOR HAS THE SOLE RESPONSIBILITY FOR FIELD VERIFICATION.**
2. **COORDINATE INFORMATION IS BASED ON AND ARE BASED ON STATE PLANES COORDINATE NEW MEXICO EAST ZONE (4728) NAD83, THE CONTRACTOR SHALL IDENTIFY ANY DISCREPANCIES PRIOR TO PROCEEDING WITH CONSTRUCTION.**
3. **CONTROL POINT LOCATION IS AT
NORTHING 377860.48
EASTING 757328.05
ELEVATION 3171.48'**
4. **THE CONTRACTOR SHALL IDENTIFY AND LOCATE UTILITY LINES, MONITOR WELLS, SURVEY MONUMENTS, AND OTHER NEARBY STRUCTURES PRIOR TO PERFORMING WORK. UTILITIES, MONITOR WELLS, SURVEY MONUMENTS AND OTHER NEARBY STRUCTURES SHALL BE PROTECTED FROM DAMAGE DURING THIS WORK. ANY DAMAGE TO UTILITY LINES, MONITOR WELLS, SURVEY MONUMENTS, AND OTHER NEARBY STRUCTURES DURING THE WORK SHALL BE REPAIRED BY THE CONTRACTOR AT NO ADDITIONAL COST TO THE OWNER. COSTS ASSOCIATED WITH THESE REPAIRS SHALL INCLUDE THE ACTUAL REPAIR COSTS AND ALL ENGINEERING COSTS REQUIRED BY THE ENGINEER TO COORDINATE AND OBTAIN REGULATORY APPROVAL OF THE REPAIRS IF REQUIRED.**
5. **THE CONTRACTOR SHALL REFER TO THE SALADO DRAW WATER RECYCLING POND TECHNICAL SPECIFICATIONS IN ADDITION TO THE DRAWINGS FOR THE CONSTRUCTION.**

REVISIONS			DESIGNED	NL	CONFIDENTIAL NOTICE The information contained herein is the property of Tetra Tech, Inc. The information contained herein is confidential and legally privileged. It should be treated as company proprietary information and not be disclosed, copied, distributed or used by individuals in or outside of the organization other than whom this document was prepared for.	 Tetra Tech Inc. Texas Registered Engineering Firm F-3924 4000 N. BIG SPRING, Suite 401 MIDLAND, TEXAS 79705 (432) 682-4550	CHEVRON N.A. E&P, MCBU LEA COUNTY, NEW MEXICO GPS (WGS84): 32.034518°N, -103.638474°W	VERIFY SCALE BAR IS ONE (1) INCH ON ORIGINAL DRAWING.  IF NOT ONE (1) INCH ON THIS SHEET, ADJUST SCALES ACCORDINGLY.	SCALES: HORIZONTAL SCALE: 1" = 100' VERTICAL SCALE: NA	TITLE SHEET SALADO DRAW LEA COUNTY, NEW MEXICO	PROJECT NO.
NO.	DATE	DESCRIPTION	DRAWN	DKK							212C-MD-00546
			CHECKED	JV							DRAWING NO.
			DATE	10/18/16							C-1
											SHEET NO.
											1 OF 16



LEGEND

- WATER RECYCLING POND OUTLINE
- 3155 — EXISTING 5' CONTOUR INTERVAL (FEET, MSL)
- EXISTING 1' CONTOUR INTERVAL
- - - PERMIT BOUNDARY
- - - SECTION BOUNDARY
- - - OVERHEAD ELECTRICAL
- pp • POWER POLE



REVISIONS		
NO.	DATE	DESCRIPTION

DESIGNED	NL
DRAWN	DKK
CHECKED	JV
DATE	10/18/16

CONFIDENTIAL NOTICE
The information contained herein is the property of Tetra Tech, Inc. The information contained herein is confidential and legally privileged. It should be treated as company proprietary information and not be disclosed, copied, distributed, or used by individuals in or outside of the organization other than whom this document was prepared for.

Tetra Tech Inc.
Texas Registered Engineering Firm F-3924
4000 N. BIG SPRING, Suite 401
MIDLAND, TEXAS 79705
(432) 682-4559

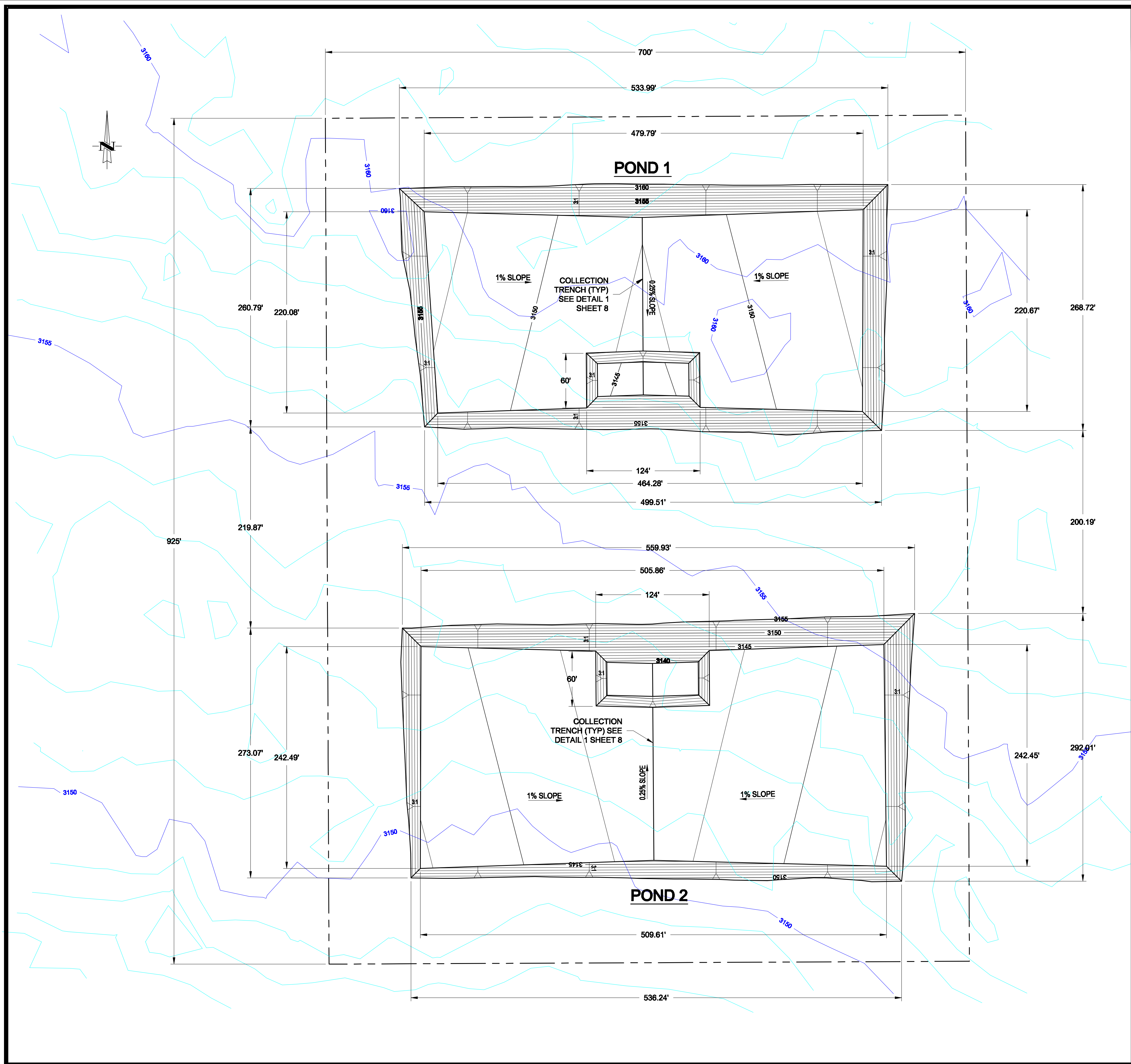
CHEVRON N.A. E&P, MCBU
LEA COUNTY, NEW MEXICO
GPS (WGS84): 32.034518°N, -103.638474°W

VERIFY SCALE
BAR IS ONE (1) INCH ON ORIGINAL DRAWING.
0 1"
IF NOT ONE (1) INCH ON THIS SHEET, ADJUST SCALES ACCORDINGLY.

SCALES:
HORIZONTAL SCALE: 1" = 100'
VERTICAL SCALE: NA

EXISTING SITE CONDITIONS
SALADO DRAW
LEA COUNTY, NEW MEXICO

PROJECT NO.
212C-MD-00546
DRAWING NO.
C-2
SHEET NO.
2 OF 16



POND 1 EXCAVATION CALCULATIONS

TOTAL AREA = 5.98 ACRES
FILL VOLUME (1.55x) = 38,247 CU.YDS
EXCAVATION VOLUME = 41,443 CU.YDS
NET DIFFERENCE = 3,196 CU.YDS.

POND 2 EXCAVATION CALCULATIONS

TOTAL AREA = 6.40 ACRES
FILL VOLUME (1.55x) = 39,109 CU.YDS
EXCAVATION VOLUME = 37,448 CU.YDS
NET DIFFERENCE = 1,661 CU.YDS.

NOTES

1. THE CONTRACTOR SHALL REFER TO THE TECHNICAL SPECIFICATIONS FOR THE SALADO DRAW WATER RECYCLING PROJECT IN ADDITION TO THE DRAWINGS FOR EARTHWORK CONSTRUCTION.
2. SEE SHEET 15 FOR POND 1 AND POND 2 BELOW GRADE STAKING PLAN

LEGEND

- EXISTING 5' CONTOUR INTERVAL (FEET, MSL)
- EXISTING 1' CONTOUR INTERVAL
- PROPOSED 2' CONTOUR INTERVAL (FEET, MSL)
- PROPOSED 1' CONTOUR INTERVAL
- PERMIT BOUNDARY



REVISIONS		
NO.	DATE	DESCRIPTION

DESIGNED	NL
DRAWN	DKK
CHECKED	JV
DATE	10/18/16

CONFIDENTIAL NOTICE

The information contained herein is the property of Tetra Tech, Inc. the information contained herein is confidential and legally privileged. It should be treated as company proprietary information and not be disclosed, copied, distributed, or used by individuals in or outside of the organization other than whom this document was prepared for.



Tetra Tech Inc.
Texas Registered Engineering Firm F-3924
4000 N. BIG SPRING, Suite 401
MIDLAND, TEXAS 79705
(432) 682-4559

CHEVRON N.A. E&P, MCBU
LEA COUNTY, NEW MEXICO
GPS (WGS84): 32.034518°N, -103.638474°W

VERIFY SCALE
BAR IS ONE (1) INCH ON ORIGINAL DRAWING.
0 1"
IF NOT ONE (1) INCH ON THIS SHEET, ADJUST SCALES ACCORDINGLY.

SCALES:
HORIZONTAL SCALE: 1" = 60'
VERTICAL SCALE: NA

**POND 1 AND POND 2
EXCAVATION PLAN
SALADO DRAW
LEA COUNTY, NEW MEXICO**

PROJECT NO. 212C-MD-00546
DRAWING NO. C-3
SHEET NO. 3 OF 16