

**UICI – 8 - 4**

**MECHANICAL  
INTEGRITY TEST  
(MITs)**

## Chavez, Carl J, EMNRD

---

**From:** Dade, Lewis (Randy) <Lewis.Dade@HollyFrontier.com>  
**Sent:** Thursday, October 25, 2018 2:58 PM  
**To:** Chavez, Carl J, EMNRD; Griswold, Jim, EMNRD; Denton, Scott  
**Cc:** Dade, Lewis (Randy)  
**Subject:** [EXT] WDW-4 MIT  
**Attachments:** img20180817\_12220886.pdf

Carl,

Here are some notes from WSP; see attached chart for MIT.  
Annulus Pressure Test WDW-4.

Starting pressure was 1200 psig and fell to 1100 psig over 1 hour, averaged 4.2% pressure loss (50 psig loss from Minute 59 to Minute 29) in 30 minutes.

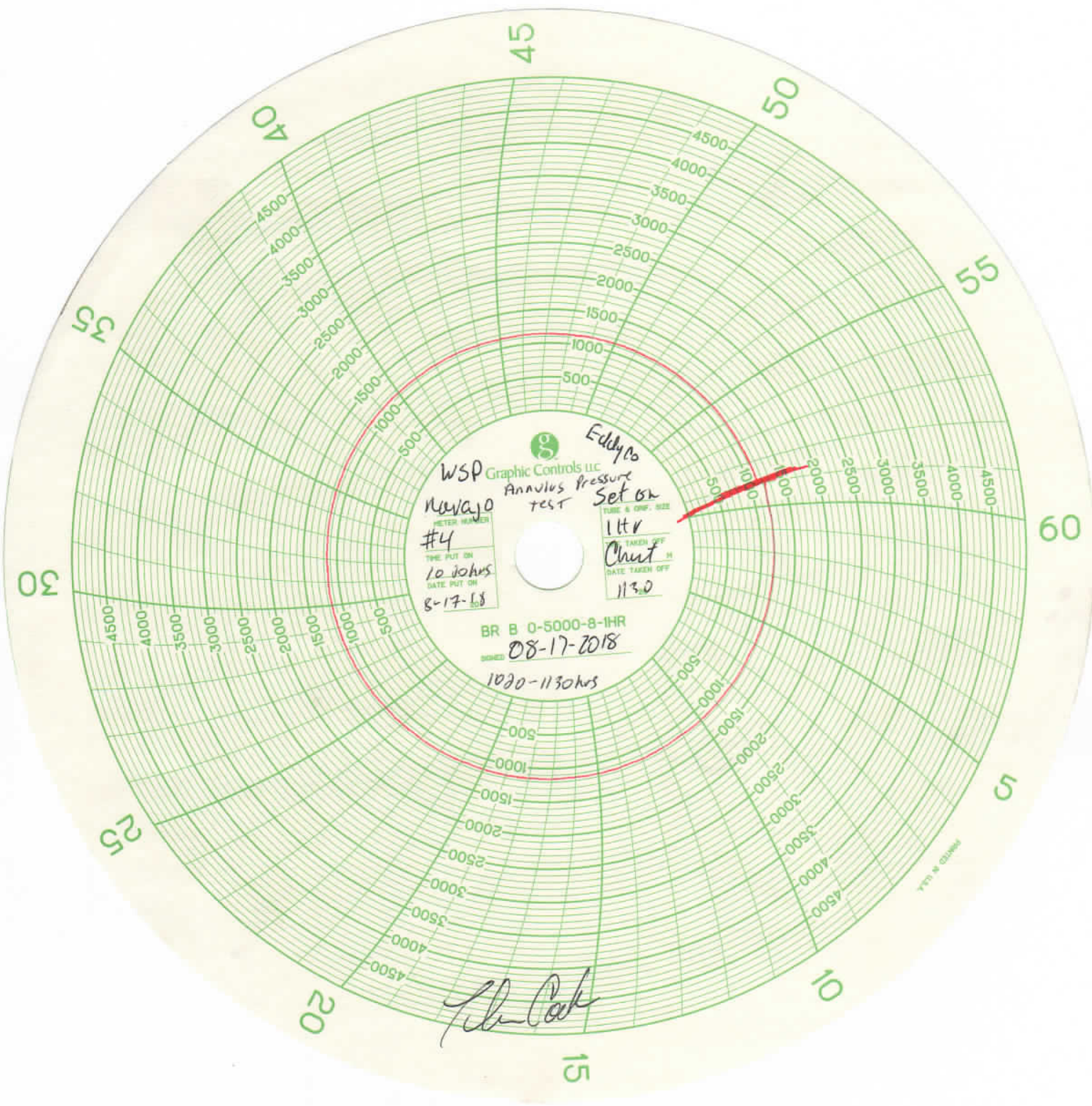
A mechanical integrity test was successfully conducted, according to NM OCD guidelines, and consisted of an annulus pressure test and a radioactive tracer survey. NM OCD personnel elected not to witness the radioactive tracer survey. An injection pressure buildup and falloff test was conducted according to guidelines of the NM OCD for Class I Nonhazardous Waste Injection Wells. Installation of the well was finished on August 17, 2018.

On August 17, 2018, an annulus pressure test was conducted. The annulus was pressured up to 1200 psi at 1020 hours and the annulus was isolated from the pressure source. The final pressure at 1130 hours was 1100 psi. This represents a loss of 100 psi (4.17%) in 30 minutes, which is within the 10% pressure change

### **Dade, Lewis ( RANDY )**

HF Navajo Ref LLC  
Environmental Specialist IV  
Environmental - Artesia  
(575) 746-5281 Work  
(575) 703-4735 Mobile  
Lewis.Dade@HollyFrontier.com  
501 E. MAIN  
ARTESIA, NM. 88210

CONFIDENTIALITY NOTICE: This e-mail, and any attachments, may contain information that is privileged and confidential. If you received this message in error, please advise the sender immediately by reply e-mail and do not retain any paper or electronic copies of this message or any attachments. Unless expressly stated, nothing contained in this message should be construed as a digital or electronic signature or a commitment to a binding agreement.



WSP Graphic Controls LLC  
Annulus Pressure  
test

Eddy  
Set on  
1 Hr  
Chut  
113.0

Meter Name  
#4  
TIME PUT ON  
10:30hrs  
DATE PUT ON  
8-17-18

BR B 0-5000-8-1HR  
08-17-2018  
1030-1130hrs

*John Cook*