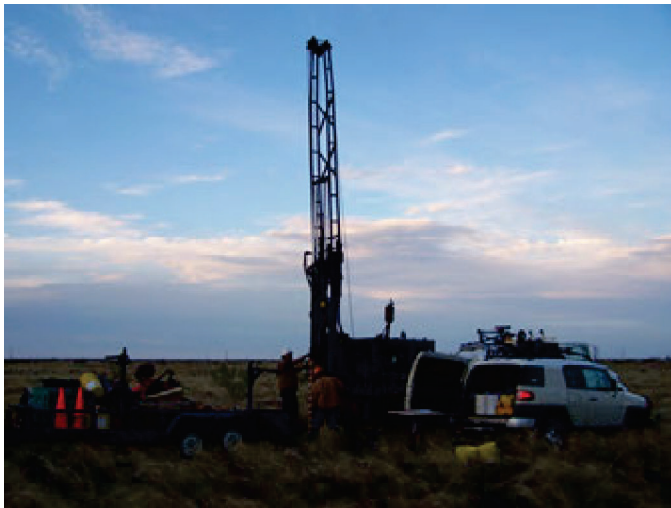


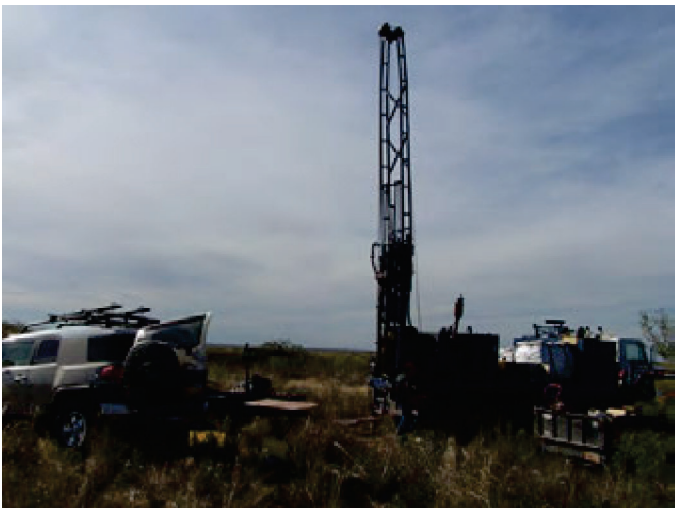
NM1-62

**Permit
Application**

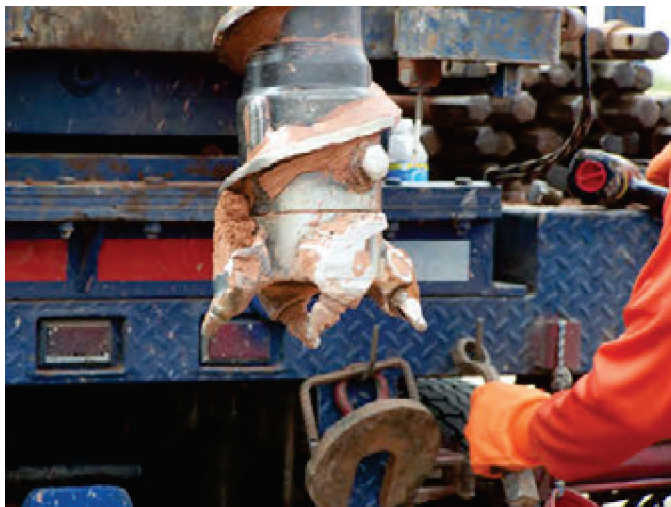
**Volume 4
Part 9 of 11**



Photograph 29. Rodgers drilling GB-1.



Photograph 30. Rodgers drilling GB-2.



Photograph 31. Button drilling bit.



Photograph 32. Combination button/blade drill bit.

PROJECT PHOTOGRAPHS

SUNDANCE WEST
SUNDANCE SERVICES INC.
LEA COUNTY, NEW MEXICO



Gordon Environmental, Inc.
Consulting Engineers

213 S. Camino del Pueblo
Bernalillo, New Mexico, USA
Phone: 505-867-6990
Fax: 505-867-6991

DATE: 12/08/09	CAD: SSI-PROJECT PICS doc	PROJECT #: 235.01.02
DRAWN BY: PG	REVIEWED BY: AY	ATTACHMENT A (SHEET 8 OF 9)
APPROVED BY: IKG	gei@gordonenvironmental.com	



Photograph 33. Con-Det drilling additive for drilling clays.



Photograph 34. Quick-Foam drilling additive to retrieve drill cuttings.



Photograph 35. Typical bentonite-cement grout for plugging boreholes.



Photograph 36. Typical borehole plugged to surface.

PROJECT PHOTOGRAPHS

SUNDANCE WEST
SUNDANCE SERVICES INC.
LEA COUNTY, NEW MEXICO



Gordon Environmental, Inc.
Consulting Engineers

213 S. Camino del Pueblo
Bernalillo, New Mexico, USA
Phone: 505-867-6990
Fax: 505-867-6991

DATE: 12/08/09	CAD: SSI-PROJECT PICS.doc	PROJECT #: 235.01.02
DRAWN BY: PG	REVIEWED BY: AY	ATTACHMENT A (SHEET 9 OF 9)
APPROVED BY: IKG	get@gordonenvironmental.com	