

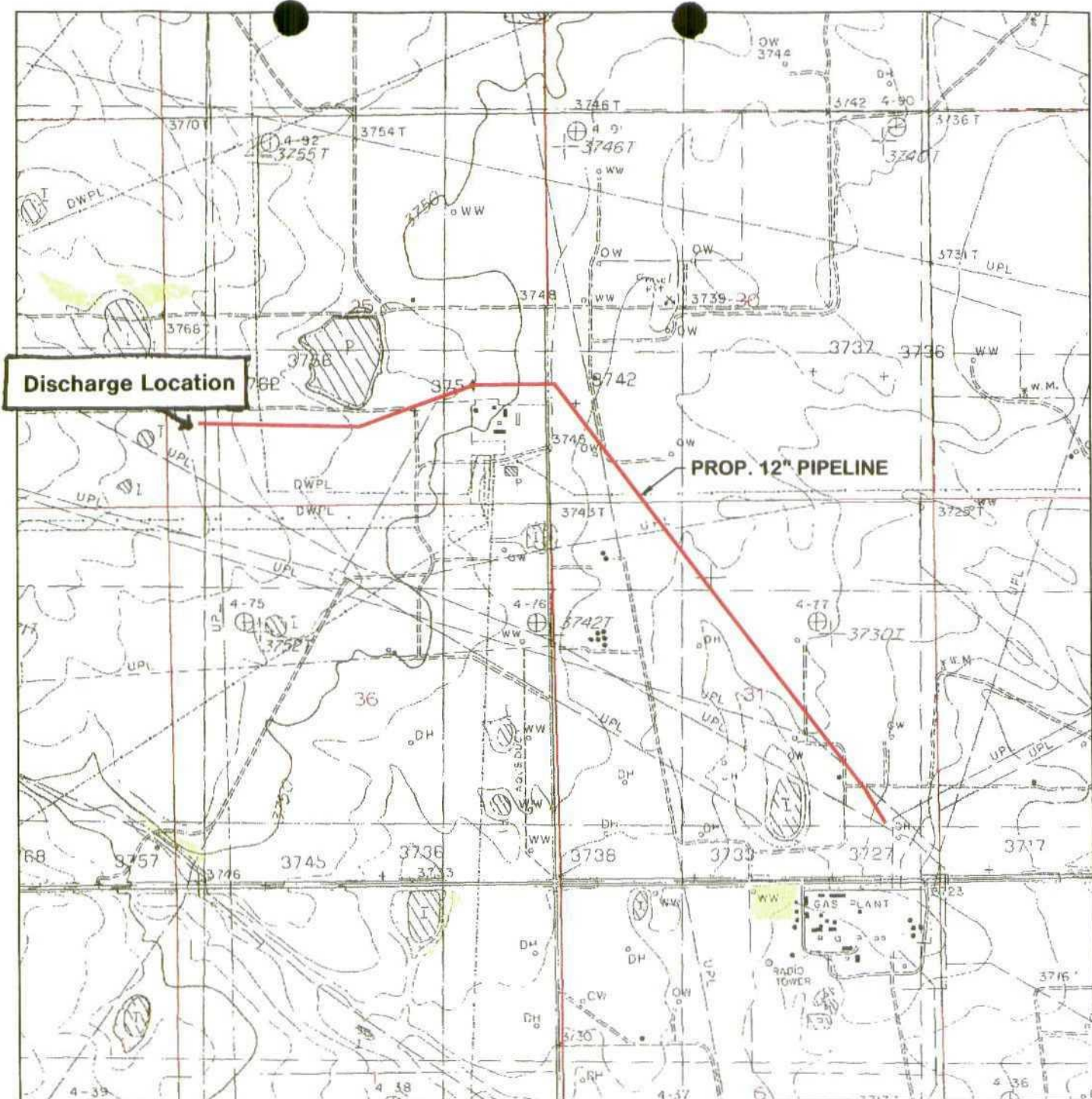
HIP -

89

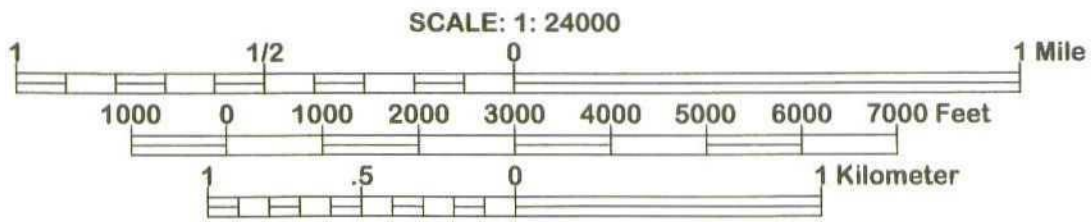
# GENERAL CORRESPONDENCE

YEAR(S):

2004



JAN 25, 2000-1:41 PM TM13075 PATH-V:BORDER\$18x11-Env-Quad.dwg



**Figure 1**  
**Project Location Map**  
**Pinnacle Pipeline Company**  
**Proposed 12" Hobbs Lateral Expansion**  
**Lea County, New Mexico**

Source: Monument North, Quadrangle, Lea County, New Mexico

Job No. 460799.01

April 2003



206 Wild Basin Road, Suite 300 Austin, Texas 78746

EMILY BUSINESS FORMS 800.392.6018 ADVANTAGE

4602584

Invoice Number	Date	Voucher	Amount	Discounts	Previous Pay	Net Amount
Temp Permit Fee	1/14/04	0490512	100.00			100.00
Totals			100.00			100.00

NMED Water Quality Manageme  
099 2



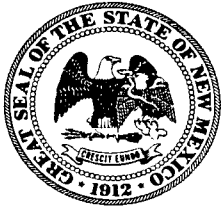
206 Wild Basin Road, Suite 300 Austin, Texas 78746

EMILY BUSINESS FORMS 800.392.6018 ADVANTAGE

4602583

Invoice Number	Date	Voucher	Amount	Discounts	Previous Pay	Net Amount
App Fee Hydro Test	1/14/04	0490511	150.00			150.00
Totals			150.00			150.00

NMED Water Quality Manageme  
099 1



**BILL RICHARDSON**  
GOVERNOR

*State of New Mexico*  
**ENVIRONMENT DEPARTMENT**

*Ground Water Quality Bureau*  
*Harold Runnels Building*  
*1190 St. Francis Drive, P.O. Box 26110*  
*Santa Fe, New Mexico 87502-6110*  
*Telephone (505) 827-2918*  
*Fax (505) 827-2965*



**RON CURRY**  
SECRETARY

**DERRITH WATCHMAN-MOORE**  
DEPUTY SECRETARY

April 25, 2003

Brandy Lim  
PBS&J  
1880 S. Dairy Ashford St, Suite 300  
Houston, Texas 77077-4760

Dear Ms. Lim :

The New Mexico Environment Department's Ground Water Quality Bureau has received your letters regarding the Pinnacle Pipeline Company, Hobbs Lateral projects. Your letters have been forwarded to the Oil Conservation Division (OCD) of the New Mexico Energy, Minerals and Natural Resources Department for review. If you have any questions, please call OCD hydrologist Bill Olson at (505) 476-3491.

Sincerely,

A handwritten signature in black ink, appearing to read "Marcy Leavitt".

Marcy Leavitt, Chief  
Ground Water Quality Bureau

Cc: Bill Olson, OCD



*An employee-owned company*

April 23, 2003

APR 24 2003

Marcie Leavitt  
Bureau Chief  
Ground Water Quality Bureau  
New Mexico Environment Department  
Harold Runnels Building Room 2250  
1190 Saint Francis Drive  
Santa Fe, New Mexico 87502  
(505) 827-2919

PN 460799.01

Dear Ms. Leavitt:

Re: Pinnacle Pipeline Company, Hobbs Lateral Expansion Project  
Ground Water Consultation  
Lea County, New Mexico

PBS&J has been contracted by Pinnacle Pipeline Company (Pinnacle) to obtain environmental clearances/consultations for the Hobbs Lateral Expansion Project (Project).

The proposed Project includes approximately 2.5 miles of 12-inch natural gas pipeline looping to be constructed through Lea County, New Mexico. The purpose of the Project is to expand the capacity on Pinnacle's existing 10-inch Hobbs Lateral. Please refer to the attached 7.5-minute USGS topographic quadrangle map (Monument North, NM) depicting the proposed project location.

On behalf of Pinnacle, PBS&J is requesting information on ground water data sources and potential ground water issues for the project area and/or additional agencies/individuals to consult with to determine any permitting or consultation requirements for the proposed project, including any issues or permits associated with hydrostatic testwater withdrawal/discharge and construction stormwater discharges.

We appreciate your assistance with this project. Please contact me at (281) 493-5100 if you have questions or require additional information.

Sincerely yours,

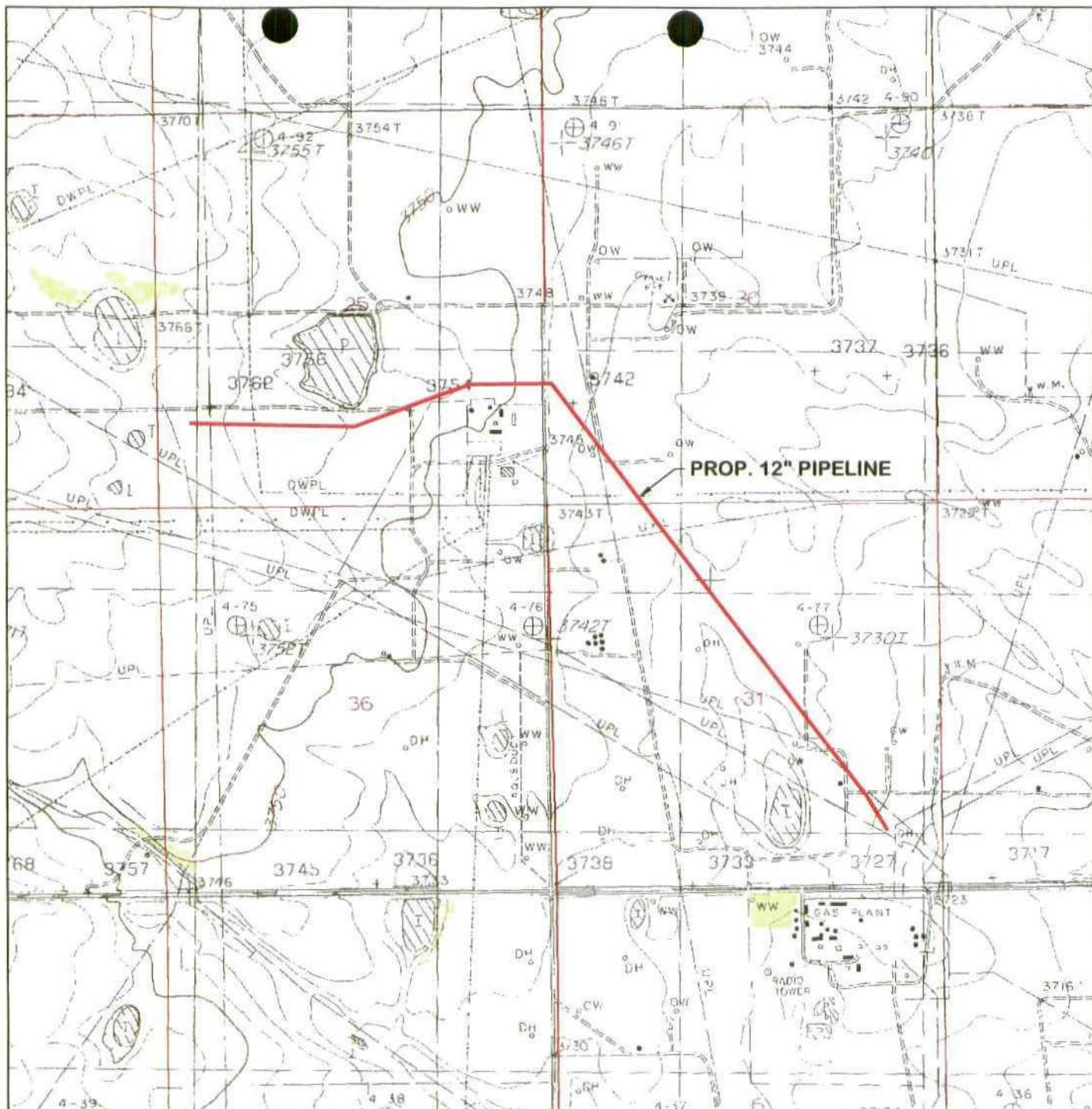
PBS&J

Brandy Lim  
Project Manager

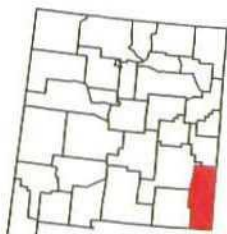
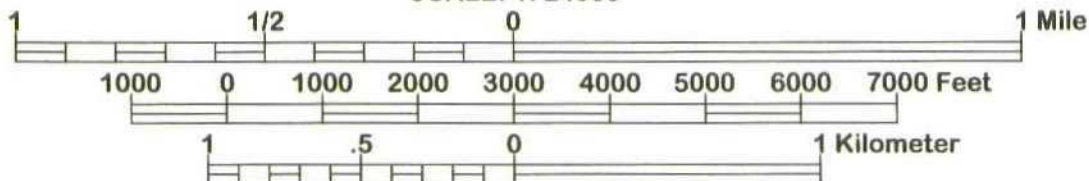
BL:lwa  
Enclosures

c: Bill Janacek – Pinnacle Pipeline Company  
Renu Gupta – Baker Botts, L.L.P.  
Joey Mahmoud – PBS&J





SCALE: 1: 24000



Source: Monument North, Quadrangle, Lea County, New Mexico

**PBSJ**

Figure 1  
Project Location Map  
Pinnacle Pipeline Company  
Proposed 12" Hobbs Lateral Expansion  
Lea County, New Mexico

Job No. 460799.01

April 2003



*An employee-owned company*

April 23, 2003

APR 24 2003

Marcie Leavitt  
Bureau Chief  
Ground Water Quality Bureau  
New Mexico Environment Department  
Harold Runnels Building Room 2250  
1190 Saint Francis Drive  
Santa Fe, New Mexico 87502  
(505) 827-2919

PN 460799.00

Dear Ms. Leavitt:

Re: Pinnacle Pipeline Company, Hobbs Lateral Project  
Ground Water Consultation  
Lea County, New Mexico

PBS&J has been contracted by Pinnacle Pipeline Company (Pinnacle) to obtain environmental clearances/consultations for the Hobbs Lateral Project (Project).

The Project includes approximately 4.9 miles of 10-inch natural gas pipeline constructed through Lea County, New Mexico in 1991. Please refer to the attached 7.5-minute USGS topographic quadrangle maps (Monument North, NM) depicting the project location.

On behalf of Pinnacle, PBS&J is requesting information on surface water data sources and surface water issues for the project area. We appreciate your assistance with this project. Please contact me at (281) 493-5100 if you have questions or require additional information.

Sincerely yours,

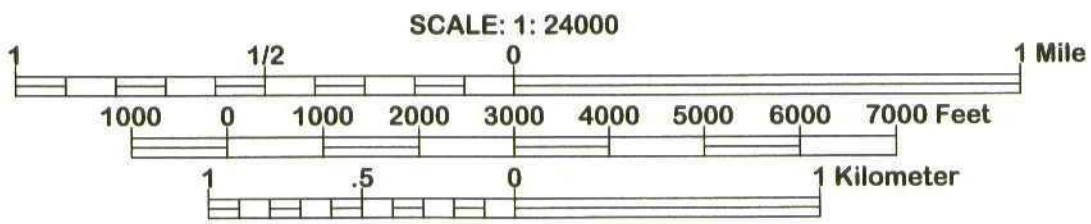
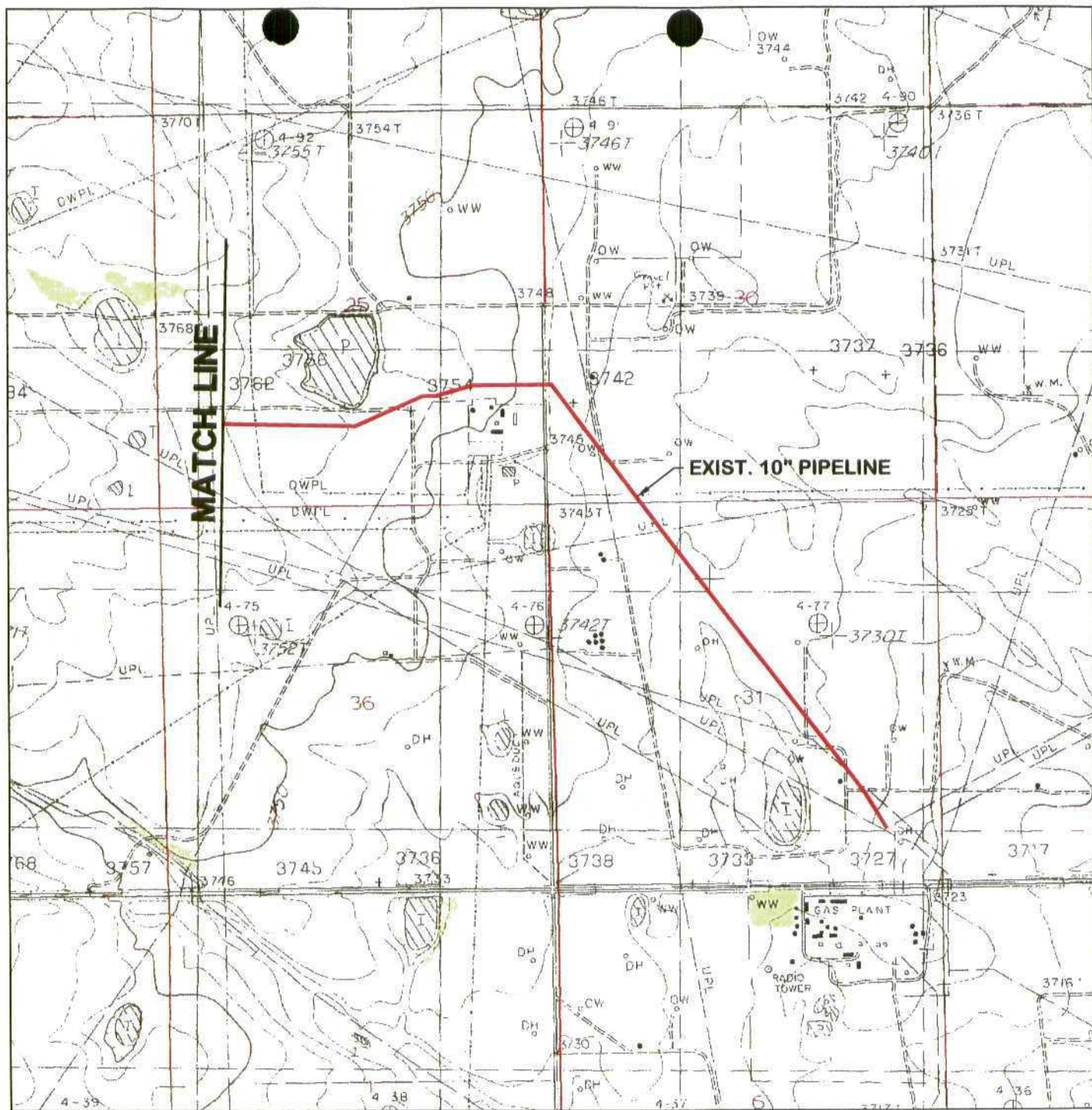
PBS&J

Brandy Lim  
Project Manager

BL:lwa  
Enclosures

c: Bill Janacek – Pinnacle Pipeline Company  
Renu Gupta – Baker Botts, L.L.P.  
Joey Mahmoud – PBS&J





**Figure 1A**  
**Project Location Map**  
**Pinnacle Pipeline Company**  
**Existing 10" Hobbs Lateral**  
**Lea County, New Mexico**

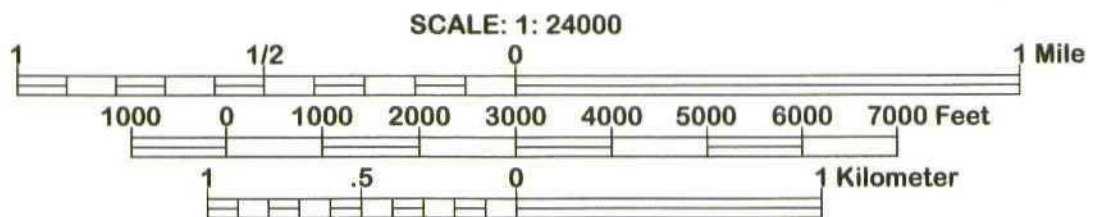
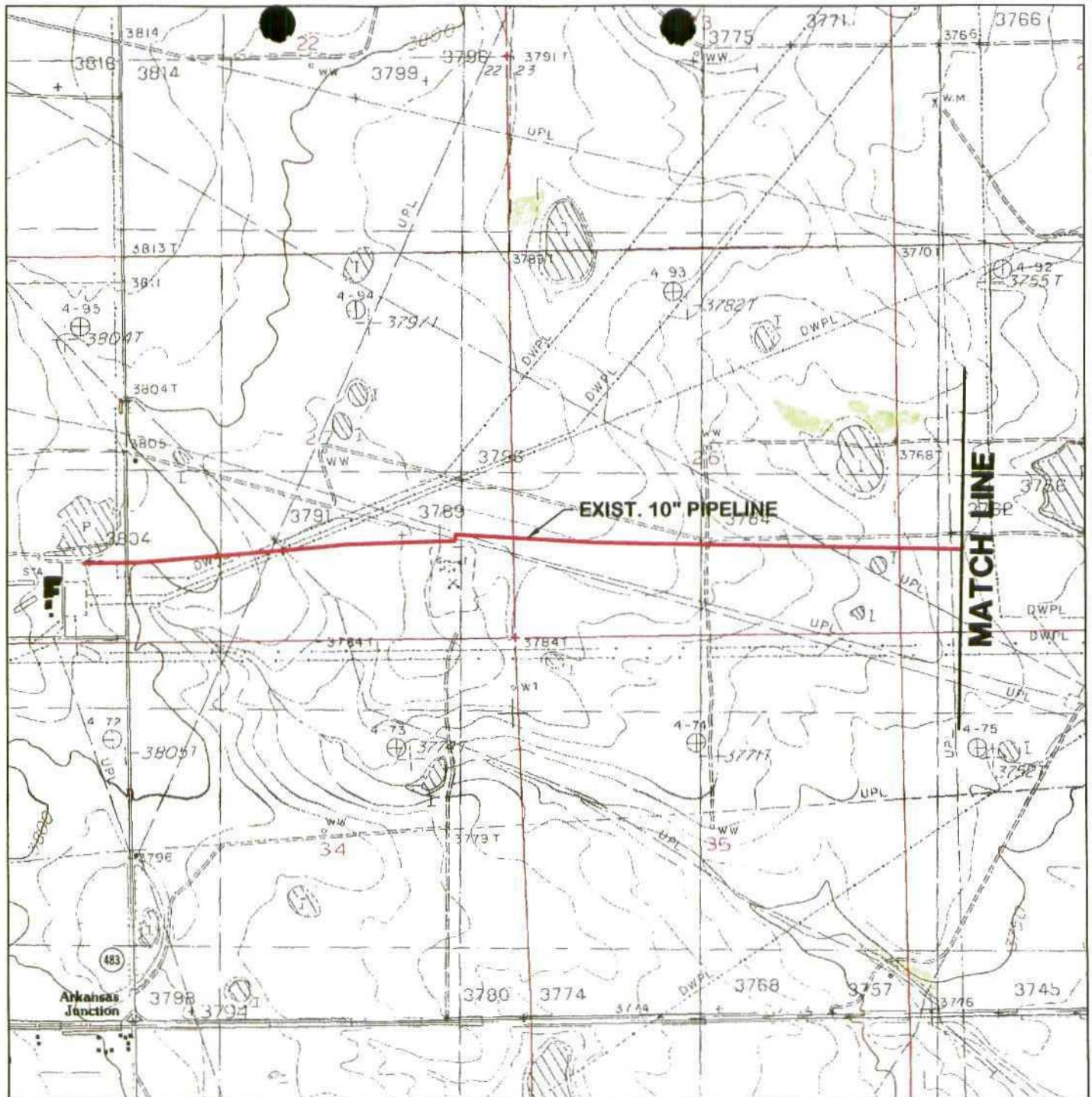
JAN 25, 2000-1:41 PM TM113075 PATH:\BORDERS\8x11-Env-Quad.dwg

Source: Monument North, Quadrangle, Lea County, New Mexico

Job No. 460799.00

April 2003





Source: Monument North, Quadrangle, Lea County, New Mexico

**PBSJ**

Figure 1B  
Project Location Map  
Pinnacle Pipeline Company  
Existing 10" Hobbs Lateral  
Lea County, New Mexico

Job No. 460799.00

April 2003

JAN 25, 2000-1:41 PM TM13075 PATH:\BORDERS\8x11-Env-Quad.dwg