

BW - 9

MONITORING REPORTS

DATE:

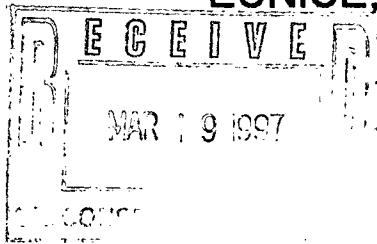
1997 - Pond

SIMS-McCASLAND WATER SALES

P.O. BOX 99

EUNICE, NEW MEXICO 88231

(505) 394-2581



MARCH 12, 1997

STATE OF NEW MEXICO
ENERGY, MINERALS AND NATURAL RESOURCES DEPARTMENT
OIL CONSERVATION DIVISION
2040 S. PACHECO
SANTA FE, NEW MEXICO 87505

ATTN: MR. MARK ASHLEY

DEAR MR. ASHLEY,

SIMS-McCASLAND WATER SALES SUBMITS THE FOLLOWING PICTORIAL WITH A BRIEF EXPLANATION OF THE INSTALLATION OF THE LEAK DETECTION SYSTEM BETWEEN TWO LAYERS OF 30 MIL. POLYETHYLENE GEOMEMBRANE. THIS LINING WAS INSTALLED IN A 105' x 105' DIRT PIT AND WILL ACCOMMODATE APPROXIMATELY 10,000 BARRELS OF WATER. THIS PIT CURRENTLY HAS A SIX FOOT CHAIN LINK FENCE AROUND IT. (PHOTOGRAPHS NOT AVAILABLE AT THIS TIME) IT IS REQUESTED THAT THIS DOCUMENT BE MADE A PART OF THE DISCHARGE PLAN CURRENTLY ON FILE WITH YOUR OFFICE. PLEASE CONTACT ME IF FURTHER INFORMATION IS REQUIRED.

SINCERELY,

BOB PATTERSON
SIMS-McCASLAND WATER SALES

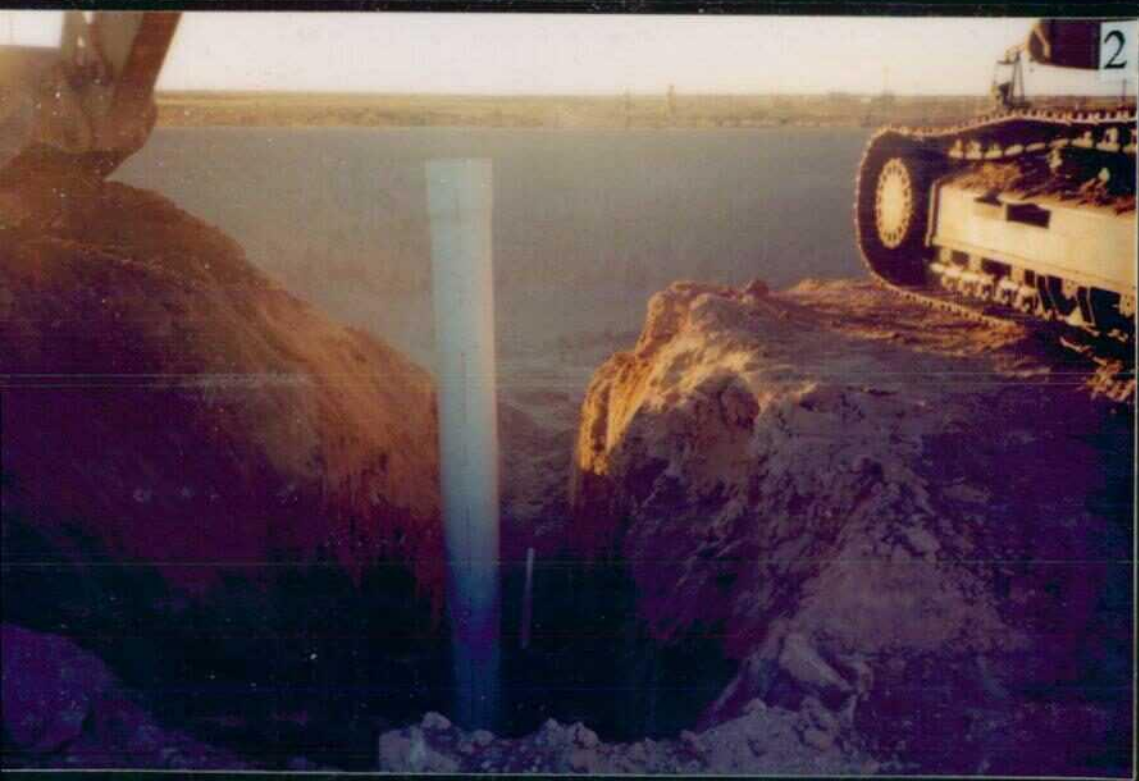
COPY TO: MR. WAYNE PRICE
O.C.D. DISTRICT II HOBBS

A BRIEF DESCRIPTION OF THE PHOTOGRAPHS FOLLOWS:

- 1, 2, & 3 SHOWS THE DIGGING AND INSTALLATION OF DRAIN LINE AND MONITOR PIPE FOR THE LEAK DETECTION SYSTEM.
- 4. SHOWS THE ANCHOR TRENCH FOR THE LINERS.
- 5. SHOWS THE TRENCH FOR THE PERFORATED PIPE FOR THE LEAK DETECTION SYSTEM.
- 6, 7, & 8 SHOWS THE LAYING OF THE SECONDARY LINER.
- 9. SHOWS THE SECONDARY LINER COMPLETE WITH PERFORATED PIPE TRENCH COVERED.
- 10, 11, 12, & 13 SHOWS THE INSTALLATION OF THE PERFORATED DRAIN LINE AND HOOK-UP TO THE MONITOR WELL.
- 14 & 15. SHOWS THE LAYING OF THE GEONET THAT GOES BETWEEN THE TWO LINERS. (SEE SAMPLE OF LAYERS AND GEONET ENCLOSED)
- 16. SHOWS THE PRIMARY LINER BEING LAID OVER THE GEONET.
- 17, 18 & 19. SHOWS THE COMPLETED JOB.

THE PRIMARY AND SECONDARY LINER ARE A 30 MIL. POLYETHYLENE GEOMEMBRANE.







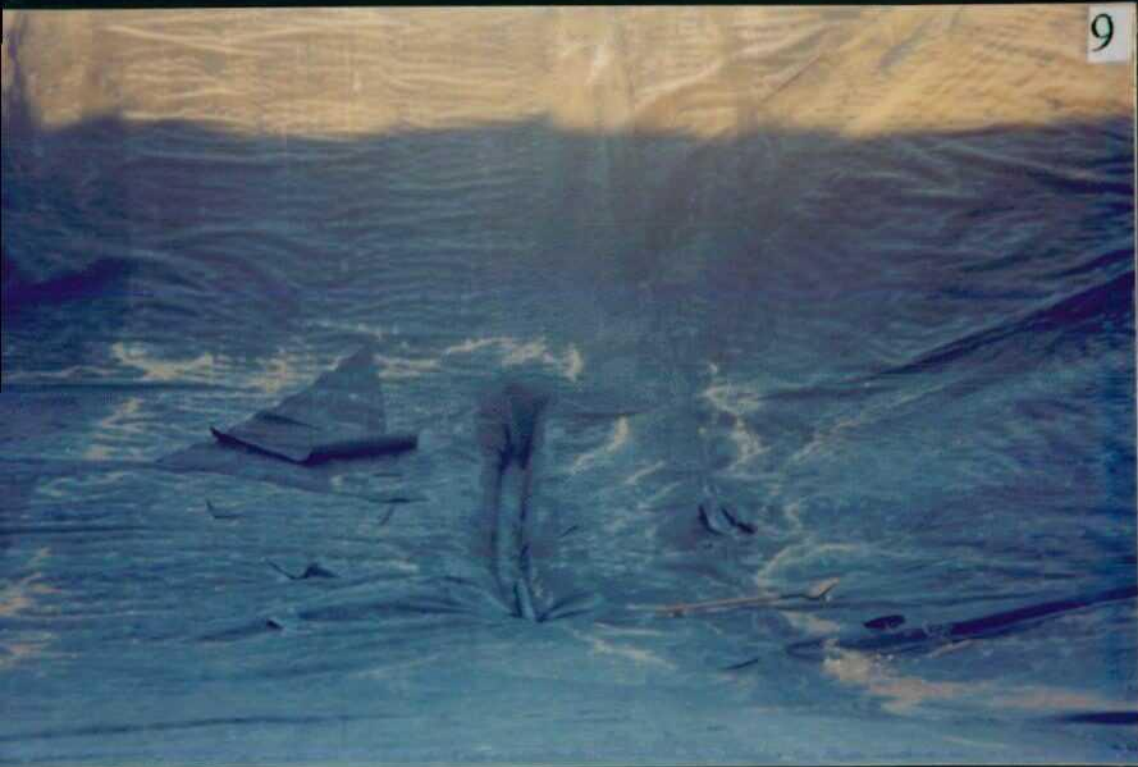




















14











