

GW - 111

**PERMITS,
RENEWALS,
& MODS
Application**



2007 FEB 8 AM 9 12

Environmental Affairs
188 CR 4900
Bloomfield, NM 87413
505/632-4606
505/632-4781 Fax

February 07, 2007

APR CHAVEZ

Mr. Wayne Price
New Mexico Oil Conservation Division
Water Quality Management Fund
1220 S St. Francis Dr.
Santa Fe NM 87505

Re: Discharge Plan GW-111 and GW-117 Application Renewal and Filing Fee

Dear Mr. Price:

Enclosed please find check number 4027021438 for \$200.00 to cover the filling fee for the following Williams Four Corners, LLC Sites:

- 32-8 #2 CDP (GW-111)
- 32-7 CDP (GW-117)

Williams Four Corners, LLC appreciates your assistance in handling the renewal application and filing fees. If you have any questions or require additional information, please contact David Bays at 505-634-4951 or me at 505-632-4606.

Thank you

Clara M Cardoza
Environmental Compliance

Xc: FCA Environmental File 220
Brandon Powell, OCD Aztec Office

District I
1625 N. French Dr., Hobbs, NM 88240
District II
1301 W. Grand Avenue, Artesia, NM 88210
District III
1000 Rio Brazos Road, Aztec, NM 87410
District IV
1220 S. St. Francis Dr., Santa Fe, NM 87505

State of New Mexico
Energy Minerals and Natural Resources

Oil Conservation Division
1220 South St. Francis Dr.
Santa Fe, NM 87505

Revised June 10, 2003

Submit Original
Plus 1 Copy
to Santa Fe
1 Copy to Appropriate
District Office

**DISCHARGE PLAN APPLICATION FOR SERVICE COMPANIES, GAS PLANTS,
REFINERIES, COMPRESSOR, GEOTHERMAL FACILITIES
AND CRUDE OIL PUMP STATIONS**

(Refer to OCD Guidelines for assistance in completing the application)

☐ New

☒ Renewal

☐ Modification

1. Type: Natural Gas Compressor Station (32-8 #2 Central Delivery Point, GW-111)
2. Operator: Williams Four Corners, LLC
Address: 188 County Road 4900, Bloomfield, NM 87413
Contact Person: David Bays Phone: (505) 634-4951
3. Location: NW/4 SE/4 Section 27 Township 32N Range 8W
4. Attach the name, telephone number and address of the landowner of the facility site.
5. Attach the description of the facility with a diagram indicating location of fences, pits, dikes and tanks on the facility.
6. Attach a description of all materials stored or used at the facility.
7. Attach a description of present sources of effluent and waste solids. Average daily quality and daily volume of waste water must be included.
8. Attach a description of current liquid waste and solid waste collection/treatment/disposal systems.
9. Attach a description of proposed modifications to existing collection/treatment/disposal systems.
10. Attach a routine inspection and maintenance plan to ensure permit compliance.
11. Attach a contingency plan for reporting and clean-up of spills or releases.
12. Attach geological/hydrological information for the facility. Depth to and quality of ground water must be included.
13. Attach a facility closure plan, and other information as is necessary to demonstrate compliance with any other rules, regulations, and/or orders.
14. CERTIFICATION I hereby certify that the information submitted with this application is true and correct to the best of my knowledge and belief.

NAME: David Bays Title: Environmental Specialist
Signature: *David Bays* Date: February 1, 2007
E-Mail Address: david.bays@williams.com



WILLIAMS FOUR CORNERS, LLC
32-8#2 CENTRAL DELIVERY POINT
DISCHARGE PLAN GW-111 RENEWAL

Prepared for:

New Mexico Oil Conservation Division
Williams Four Corners, LLC
188 County Road 4900
Bloomfield, NM 87413

Item 1

Indicate the major operational purpose of the facility. If the facility is a natural gas purification plant (CO₂ removal) and compressor station include the total combined site rated horsepower.

The 32-8#2 Central Delivery Point is a compressor station owned and operated by Williams Four Corners, LLC (Williams). The site will include the following equipment:

The site is permitted for seventeen Waukesha 7042GL Reciprocating Compressor Engines (site-rated compressor horsepower is 1357 hp) and seven glycol dehydrators; however only thirteen engines are currently installed at the site. Compressors and dehydrators may be installed or removed to meet demand. In addition, there are various storage tanks, support structures and ancillary equipment.

Item 2

Name of operator or legally responsible party and local representative.

Legally Responsible Party/ Operator	Williams Four Corners, LLC 188 County Road 4900 Bloomfield, NM 87413 (505) 632-4600/4634 (800)-645-7400 (24 hour emergency notification)
--	--

Local Representative	David Bays Williams Four Corners, LLC 188 County Road 4900 Bloomfield, NM 87413 (505) 634-4951
-----------------------------	--

Item 3

Give a legal description of the location and county. Attach a large-scale topographic map.

San Juan County, New Mexico
Township 32 North, Range 8 West, Section 27
The topographic map is attached as Figure 1.

Item 4

Attach the name, telephone number and address of the landowner of the facility site.

Williams is leasing the subject property from:

Thomas L. Jenkins et ux
2755 Beverly Street
Boise, ID 83709

Item 5

Attach a description of the facility with a diagram indicating location of fences, pits, dikes and tanks on the facility.

There have been no modifications to this section. See information on-file at OCD.

Item 6

Attach a description of all materials stored or used at the facility.

Table 1 describes the transfer, storage and disposal of exempt and non-exempt process fluids, effluents, and waste solids expected to be generated at the site.

MSDSs for materials at the site are maintained in WFS's corporate office and are available upon request.

Item 7

Attach a description of present sources of effluent and waste solids. Average quality and daily volume of wastewater must be included.

The source, quantity, and quality of effluent and waste solids generated at the compressor station are summarized in Table 2.

Item 8

Attach a description of current liquid and solid waste collection/treatment/disposal procedures.

There have been no modifications to this item. Additionally, Table 1 describes the transfer, storage and disposal of exempt and non-exempt process fluids, effluents, and waste solids expected to be generated at the site.

Item 9

Attach a description of proposed modifications to existing collection/treatment/disposal systems.

No modifications to the facility are necessary to meet NMOCD requirements.

Item 10

Attach a routine inspection and maintenance plan to ensure permit compliance.

There have been no modifications to this item. See information on-file at OCD.

Item 11

Attach a contingency plan for reporting and clean up of spills or releases.

WFS will handle all spills and leaks immediately as required by company procedures and will report all spills and leaks according to the requirements of the State of New Mexico as found in NMOCD Rule 116 and WQCC Section 1203.

Item 12

Attach ecological/hydrological information for the facility. Depth to and quality of groundwater must be included.

A current well search was performed for this renewal application. New information to include in this section of the plan includes an additional well located within a ¼-mile radius of the facility. Details for each well are included in the table below.

Township; Range; Section	Quarter _a	Apx. Distance from Site (mi)	Well #	Use _b	Well Depth (ft)	Water Bearing Stratifications (ft)	Description	Depth to Water (ft)
32N; 8W; 27	434	0.25-0.5	SJ 03250	dom	400	375-390	--	375
32N; 8W; 27	321	~0.25	SJ 02992	dom	330	--	--	230

Note a: 1=NW/4; 2=NE/4; 3=SW/4; 4=SE/4

Note b: dom = domestic; mdw=municipal and industrial; stk=stock

--" denotes information not provided

Item 13

Attach a facility closure plan, and other information as is necessary to demonstrate compliance with any other OCD rules, regulations and/or orders.

There have been no modifications to this item. See information on-file at OCD.



Source: USGS Anastacio Spring, New Mexico Quadrangle

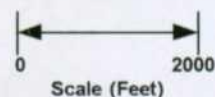
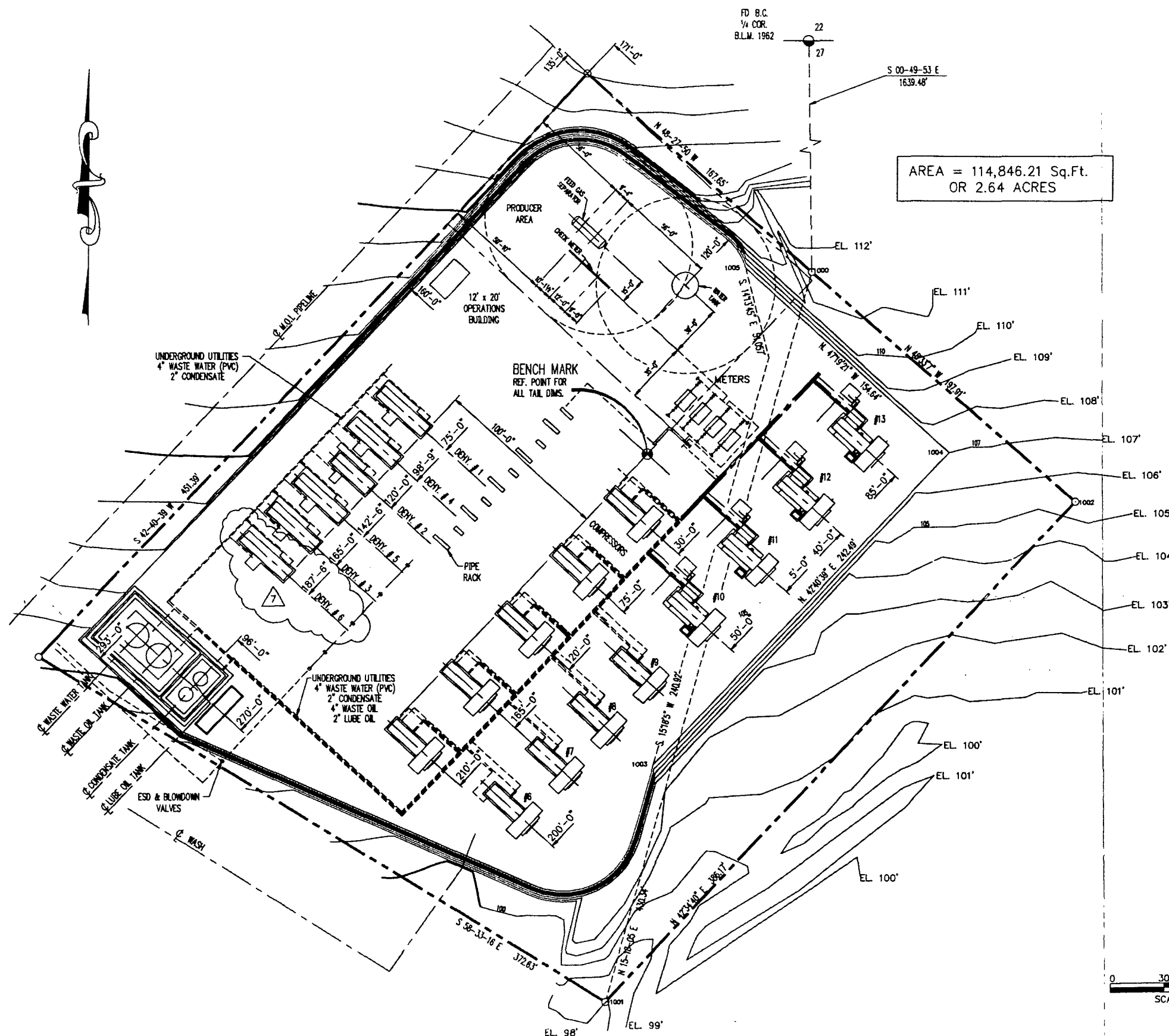
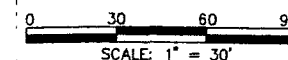


Figure 1 Site Vicinity / Topographic Map
32-8 #2 CDP Compressor Station
 Section 27, Township 32N Range 8W
 San Juan County, New Mexico



NOTES:

1. EXCAVATION AREA SHOWN IS AN APPROXIMATE AREA REQUIRED, AND MAY BE ADJUSTED AS REQUIRED BY ACTUAL FIELD CONDITIONS.
2. LOCATIONS OF MISC. EQUIPMENT (I.E. LIGHTING STANDARDS, PULSATION BOTTLE, ETC.) ARE APPROXIMATE. SEE PIPING PLAN FOR ACTUAL LOCATIONS.
3. DRAINAGE AND DIVERSION DAMS ARE TO BE CONSTRUCTED AS REQUIRED AFTER FINAL EXCAVATION AND GRADING IS COMPLETE.



6	9/30/04	POP	ADDED DEHY. # 4	160824
5	6/14/04	POP	ADDED COMPR. #1, #2, #3 (X-SECTION)	
4	4/8/04	DDA	ADDED DEHY #5, REPLACED DEHY #1, REMOVED PULSATION DAMPER	
3	7/1/99	DDA	ADDED COMPR. #6 & #7	700256
2	5/16/99	LWB	ADDED COMPR. #8	700256
7	1/31/05	DDA	ADDED DEHY #8	
NO.	DATE	BY	DESCRIPTION	W.O. #

DRAFTING	BY	DATE
DRAWN	RWB	3/12/921
CHECKED		
APPROVED	WPA	
ENGINEERING	BY	DATE
C & S REVIEW		
PROJECT APPROVED		
PLOT DATE/TIME	4/7/2004 10:39 P.M.	

WILLIAMS FIELD SERVICES
ONE OF THE WILLIAMS COMPANIES
SAN JUAN 32-8 NO.2 C.D.P.
O.C.D. DRAINAGE PLAN

SCALE: 1" = 30'
W.O. # 71938

DWG. NO. 32-8#2-0CD

TABLE 1
TRANSFER, STORAGE AND DISPOSAL OF PROCESS FLUIDS, EFFLUENT AND WASTE SOLIDS
32-8#2 CENTRAL DELIVERY POINT

PROCESS FLUID/WASTE	STORAGE	STORAGE CAPACITY (approximate)	CONTAINMENT/ SPILL PREVENTION	RCRA STATUS	DESCRIPTION OF FINAL DISPOSITION
Used Oil	Above Ground Storage Tank	6930 gal	Berm	Non-exempt	May be hauled to a WFS or contractor consolidation point before transport to EPA-registered used oil marketer for recycling.
Condensate/ Produced Water	Above Ground Storage Tank	6300 gal	Berm	Exempt	Saleable liquids may be sold to refinery. The remaining liquids may be transported to a Williams evaporation facility or may be disposed at NMOCD-approved facility.
Waste Water/Wash-down Water	Above Ground Storage Tank	6930 gal	Berm	Non-exempt	Contractor may pump wash water back into truck after washing; water may be transported to NMOCD-approved facility; or evaporation at WFS facility may be considered.
Used Oil Filters	Drum or other container	Varies	Transported to a Williams or contractor facility in drum or other container	Non-exempt	Transported to a Williams or contractor consolidation point, drained, and ultimately transported for disposal at an approved disposal facility. A Waste Acceptance Profile will be filed with the disposal facility. Recycling options may be considered when available.
Used Process Filters	Drum or other container	Varies	Transported to a Williams or contractor facility in drum or other container	Exempt	Transported to a Williams or contractor consolidation point, drained, and ultimately transported for disposal at an approved disposal facility. A Waste Acceptance Profile will be filed with the disposal facility. Recycling options may be considered when available.
Spill Residue (i.e., soil, gravel, etc.)	N/A	N/A	In situ treatment, land-farm, or alternate method	Incident dependent	Per Section VI, Remediation, in 8/13/93 NMOCD Guidelines for Remediation of Leaks, Spills, and Releases.
Used Absorbents	Drum or other container	Varies	Transported to a Williams or contractor facility in drum or other container	Non-exempt	Transported to a Williams or contractor consolidation point, drained, and ultimately transported for disposal at an approved disposal facility. A Waste Acceptance Profile will be filed with the disposal facility. Recycling options may be considered when available.
Empty Drums / Containers	N/A	N/A	Berm	Non-exempt	Barrels are returned to supplier or transported to a Williams or contractor consolidation point and ultimately recycled/disposed consistent with applicable regulations.
Methanol	Above Ground Storage Tank	500 gal	Berm	N/A	Off-spec material recycled or disposed consistent with applicable regulations.
Antifreeze	Above Ground Storage Tank	500 gal	Concrete pad and wastewater system	N/A	Off-spec material recycled or disposed consistent with applicable regulations.
Glycol	Above Ground Storage Tank	500 gal 100 gal* 50 gal*	Concrete pad and wastewater system	N/A	Off-spec material recycled or disposed consistent with applicable regulations.
Lube Oil	Above Ground Storage Tank	4200 gal 500 gal*	Berm Concrete pad and wastewater system	N/A	Off-spec material recycled or disposed consistent with applicable regulations.

*Number of tanks installed dependent on number of engines and dehydrators installed on site. Engines and dehydrators are installed or removed to meet demand.

TABLE 2
SOURCE, QUANTITY AND QUALITY OF EFFLUENT AND WASTE SOLIDS
32-8#2 CENTRAL DELIVERY POINT

PROCESS FLUID / WASTE	SOURCE	QUANTITY (Ranges)	QUALITY
Condensate/Produced Water	Inlet Scrubber, Gas Inlet Separator, Dehydrators	100-6000 bbl/year	No Additives
Waste Water /Wash Down Water	Compresor and Dehy Skids	500-5000 gal/year/engine	Biodegradable soap and tap water with traces of used oil
Used Oil	Compressors	500-2000 gal/year/engine	Used Motor Oil w/ No Additives
Used Oil Filters	Compressors	50-500/year/engine	No Additives
Used Process Filters	Air, Inlet, Fuel Gas	75-500/year,	No Additives
Empty Drums/Containers	Liquid Containers	0-80/year	No Additives
Spill Residue (i.e. soil, gravel, etc)	Incidental Spill	Incident Dependent	Incident Dependent
Used Adsorbents	Incidental Spill/Leak Equipment Wipe-down	Incident Dependent	No Additives



Four Corners Area
Environmental Department
#188 County Road 4900
Bloomfield, N.M. 87413
Phone: (505) 632-4825
Fax: (505) 632-4781

January 18, 2007

CERTIFIED MAIL – RETURN RECEIPT REQUESTED

Thomas L. Jenkins et ux
2755 Beverly Street
Boise, ID 83709

Dear Madam/Sir:

This letter is to advise you that Williams Four Corners, LLC is preparing to submit to the Oil Conservation Division a Discharge Plan Renewal application for the permitted 32-8#2 Central Delivery Point (GW-111). This notice is a requirement pursuant to New Mexico Water Quality Control Commission Regulations. We expect to submit the Discharge Plan Renewal application to the Oil Conservation Division during February 2007.

The facility, located in Section 27, Township 32 North, Range 8 West, San Juan County, New Mexico, approximately 17 miles northeast of Blanco, provides natural gas compression and conditioning services.

The discharge permit addresses how spills, leaks, and other accidental discharges to the surface will be managed. The facility does not discharge wastewater to surface or subsurface waters. All wastes generated will be temporarily stored in tanks or containers. Waste shipped offsite will be disposed or recycled at an OCD approved site. In the event of an accidental discharge, ground water most likely will not be affected. The estimated ground water depth at the site is 200 to 500 feet. The total dissolved solids concentration of area ground water is expected to be in the range of 200-2,000 parts per million.

Comments or inquiries regarding this permit or the permitting process may be directed to:

Director of the Oil Conservation Division
1220 South Saint Francis Dr.
Santa Fe NM 87505

Respectfully submitted,

Clara Cardoza
Environmental Compliance Administrator

U.S. Postal Service TM	
CERTIFIED MAILTM RECEIPT	
(Domestic Mail Only; No Insurance Coverage Provided)	
For delivery information visit our website at www.usps.com	
OFFICIAL USE	
Postage	\$ 40.39
Certified Fee	\$2.40
Return Receipt Fee (Endorsement Required)	\$1.85
Restricted Delivery Fee (Endorsement Required)	\$0.00
Total Postage & Fees	\$ 44.64
01/20/2007	
Sent To: Thomas Jenkins et ux	
Street, Apt. No. or PO Box No. 2755 Beverly St	
City, State, ZIP+4 Boise ID 83709	

PS Form 3800, June 2002 See Reverse for Instructions



Four Corners Area
Environmental Department
#188 County Road 4900
Bloomfield, N.M. 87413
Phone: (505) 832-4825
Fax: (505) 832-4781

January 18, 2007

CERTIFIED MAIL – RETURN RECEIPT REQUESTED

James Sullivan
NM Department of Transportation – District 5
PO Box 4167
Santa Fe, NM 87502

Dear Madam/Sir:

This letter is to advise you that Williams Four Corners, LLC is preparing to submit to the Oil Conservation Division a Discharge Plan Renewal application for the permitted 32-8#2 Central Delivery Point (GW-111). This notice is a requirement pursuant to New Mexico Water Quality Control Commission Regulations. We expect to submit the Discharge Plan Renewal application to the Oil Conservation Division during February 2007.

The facility, located in Section 27, Township 32 North, Range 8 West, San Juan County, New Mexico, approximately 17 miles northeast of Blanco, provides natural gas compression and conditioning services.

The discharge permit addresses how spills, leaks, and other accidental discharges to the surface will be managed. The facility does not discharge wastewater to surface or subsurface waters. All wastes generated will be temporarily stored in tanks or containers. Waste shipped offsite will be disposed or recycled at an OCD approved site. In the event of an accidental discharge, ground water most likely will not be affected. The estimated ground water depth at the site is 200 to 500 feet. The total dissolved solids concentration of area ground water is expected to be in the range of 200-2,000 parts per million.

Comments or inquiries regarding this permit or the permitting process may be directed to:

Director of the Oil Conservation Division
1220 South Saint Francis Dr.
Santa Fe NM 87505

Respectfully submitted,

Clara Cardoza
Environmental Compliance Administrator

U.S. Postal Service	
CERTIFIED MAILTM RECEIPT	
(Domestic Mail Only; No Insurance Coverage Provided)	
For delivery information visit our website at www.usps.com	
OFFICIAL USE	
Postage	\$ 40.39
Certified Fee	\$2.40
Return Receipt Fee (Endorsement Required)	\$1.85
Restricted Delivery Fee (Endorsement Required)	\$0.00
Total Postage & Fees	\$ 44.64
01/20/2007	
Sent To: James Sullivan	
Street, Apt. No. or PO Box No. NM DOT PO Box 4167	
City, State, ZIP+4 Santa Fe NM 87502	
PS Form 3800, June 2002 See Reverse for Instructions	