

**GW - 162**

**GENERAL  
CORRESPONDENCE**

**YEAR(S):**

---

THE SANTA FE  
**NEW MEXICAN** RECEIVED  
Founded 1849

APR 30 2007

NM EMNRD OIL CONSERV

ATTN: Carl Chavez  
1220 S ST FRANCIS DR  
SANTA FE NM 87505

Oil Conservation Division  
1220 S. St. Francis Drive  
Santa Fe, NM 87505

ALTERNATE ACCOUNT: 56689  
AD NUMBER: 00211726 ACCOUNT: 00002212  
LEGAL NO: 80841 P.O. #: 52100-3956  
859 LINES 1 TIME(S) 481.04  
AFFIDAVIT: 6.00  
TAX: 37.14  
TOTAL: 524.18

AFFIDAVIT OF PUBLICATION

STATE OF NEW MEXICO  
COUNTY OF SANTA FE

I, R. Lara, being first duly sworn declare and say that I am Legal Advertising Representative of THE SANTA FE NEW MEXICAN, a daily newspaper published in the English language, and having a general circulation in the Counties of Santa Fe and Los Alamos, State of New Mexico and being a newspaper duly qualified to publish legal notices and advertisements under the provisions of Chapter 167 on Session Laws of 1937; that the publication # 80841 a copy of which is hereto attached was published in said newspaper 1 day(s) between 04/26/2007 and 04/26/2007 and that the notice was published in the newspaper proper and not in any supplement; the first date of publication being on the 26th day of April, 2007 and that the undersigned has personal knowledge of the matter and things set forth in this affidavit.

/S/

R. Lara  
LEGAL ADVERTISEMENT REPRESENTATIVE

Subscribed and sworn to before me on this 26th day of April, 2007

Notary

Laura A. Hardy

Commission Expires:

11/23/07



**NOTICE OF  
PUBLICATION**

**STATE OF  
NEW MEXICO  
ENERGY, MINERALS  
AND NATURAL  
RESOURCES  
DEPARTMENT  
OIL CONSERVATION  
DIVISION**

Notice is hereby given that pursuant to New Mexico Water Quality Control Commission Regulations (20.6.2.3106 NMAC), the following discharge permit application(s) has been submitted to the Director of the New Mexico Oil Conservation Division ("NMOCD"), 1220 S. Saint Francis Drive, Santa Fe, New Mexico 87505, Telephone (505) 476-3440:

(GW-162) DCP Midstream LP. Elisabeth Klein, Principal Environmental Specialist, 370 17th Street, Suite 2500 Denver, Colorado 80202, has submitted a renewal application for the previously approved discharge plan for their Antelope Ridge Gas Plant located in the SW/4, SE/4 of Section 15, Township 23 South, Range 34 East, NMPM, Lea County, New Mexico. The plant is located approximately 21.6 miles west on CR-21 from SR-207 to a "lease road" and then south about 2 miles. Natural gas products, waste oil and water are stored in above ground tanks prior to being transported off-site to OCD approved facilities. Groundwater most likely to be affected by a spill, leak or accidental discharge is at a depth of approximately 400 feet below the ground surface, with a total dissolved solids concentration of 55 mg/L. The discharge plan addresses how oilfield products and wastes will be properly handled, stored, and disposed of, including how spills, leaks, and other accidental discharges to the surface will be managed in order to protect fresh water.

(GW-167) DCP Midstream LP. Elisabeth Klein, Principal Environmental Specialist, 370 17th Street, Suite 2500 Denver, Colorado 80202, has submitted a renewal application for the previously approved discharge plan for their P & P Malaga Compressor Station located in the SW/4, NE/4 of Section 3, Township 24 South, Range 28 East, NMPM, Eddy County, New Mexico. The compressor station is located approximately 500 yards northeast on CR-738 from Onsurez Road to an access road. Approximately 12 barrels per day of wastewater will be stored in above ground tanks prior to being transported off-site to OCD approved facilities. Groundwater most likely to be affected by a spill, leak or accidental discharge is at a depth of approximately 30 feet below the ground surface, with a total dissolved solids concentration of 300 mg/L. The discharge plan addresses how oilfield products and wastes will be properly handled, stored, and disposed of, including how spills, leaks, and other accidental discharges to the surface will be managed in order to protect fresh water.

(GW-176) DCP Midstream LP. Elisabeth Klein, Principal Environmental Specialist, 370 17th Street, Suite 2500 Denver, Colorado 80202, has submitted a renewal application for the previously approved discharge plan for their Bootleg Compressor Station located in the NW/4, SE/4 of Section 28, Township 22 South, Range 33 East, NMPM, Lea County, New Mexico. The compressor station is located approximately 6.4 miles southeast on SR-176 from US-180 to an access road and 9.4 miles due south. Approximately 39 barrels per day of wastewater will be stored in above ground tanks prior to being transported off-site to OCD approved facilities. Groundwater most likely to be affected by a spill, leak or accidental discharge is at a depth of approximately 244 feet below the ground surface, with a total dissolved solids concentration of 1,973 mg/L. The discharge plan addresses how

oilfield products and wastes will be properly handled, stored, and disposed of, including how spills, leaks, and other accidental discharges to the surface will be managed in order to protect fresh water.

(GW-177) DCP Midstream LP. Elisabeth Klein, Principal Environmental Specialist, 370 17th Street, Suite 2500 Denver, Colorado 80202, has submitted a renewal application for the previously approved discharge plan for their Maljamar Compressor Station located in the NE/4, SE/4 of Section 20, Township 17 South, Range 33 East, NMPM, Lea County, New Mexico. The compressor station is located approximately 1.3 miles northwest on CR-125 from Dog Lake Road to an access road and 1.3 miles northeast. The facility is in the process of being closed and any wastewater will be stored in above ground tanks prior to being transported off-site to OCD approved facilities. Groundwater most likely to be affected by a spill, leak or accidental discharge is at a depth of approximately 25 to 175 feet below the ground surface, with a total dissolved solids concentration of 1,100 mg/L. The discharge plan addresses how oilfield products and wastes will be properly handled, stored, and disposed of, including how spills, leaks, and other accidental discharges to the surface will be managed in order to protect fresh water.

(GW-178) DCP Midstream LP. Elisabeth Klein, Principal Environmental Specialist, 370 17th Street, Suite 2500 Denver, Colorado 80202, has submitted a renewal application for the previously approved discharge plan for their Wonton Compressor Station located in the NE/4, SE/4 of Section 10, Township 17 South, Range 37 East, NMPM, Lea County, New Mexico. The compressor station is located approximately 1.25 miles east of SR-18. Any wastewater will be stored in above ground tanks prior to being transported off-site to OCD approved facilities. Groundwater most

likely to be affected by a spill, leak or accidental discharge is at a depth of approximately 100 to 200 feet below the ground surface, with a total dissolved solids concentration of 1,100 mg/L. The discharge plan addresses how oilfield products and wastes will be properly handled, stored, and disposed of, including how spills, leaks, and other accidental discharges to the surface will be managed in order to protect fresh water.

(GW-280) DCP Midstream LP. Elisabeth Klein, Principal Environmental Specialist, 370 17th Street, Suite 2500 Denver, Colorado 80202, has submitted a renewal application for the previously approved discharge plan for their Northeast Carlsbad Compressor Station located in the SE/4, NE/4 of Section 6, Township 21 South, Range 28 East, NMPM, Eddy County, New Mexico. The compressor station is located approximately 2.5 miles north-northwest on CR-243 from US-180. Natural gas products, waste oil and water are stored in above ground tanks prior to being transported off-site to OCD approved facilities. Groundwater most likely to be affected by a spill, leak or accidental discharge is at a depth of approximately 13 to 30 feet below the ground surface, with a total dissolved solids concentration of 3,110 mg/L. The discharge plan addresses how oilfield products and wastes will be properly handled, stored, and disposed of, including how spills, leaks, and other accidental discharges to the surface will be managed in order to protect fresh water.

(GW-311) DCP Midstream LP. Elisabeth Klein, Principal Environmental Specialist, 370 17th Street, Suite 2500 Denver, Colorado 80202, has submitted a renewal application for the previously approved discharge plan for their Cotton Draw Compressor Station located in the NE/4, NW/4 of Section 18, Township 25 South, Range 32 East, NMPM, Lea County, New Mexico. The compressor station is located approximately 6.3 miles

south on CR-1 from SR-128. Approximately 30 barrels per day of wastewater is stored in above ground tanks prior to being transported off-site to OCD approved facilities. Groundwater most likely to be affected by a spill, leak or accidental discharge is at a depth of approximately 400 feet below the ground surface, with a total dissolved solids concentration from 1,000 to 1,700 mg/L. The discharge plan addresses how oilfield products and wastes will be properly handled, stored, and disposed of, including how spills, leaks, and other accidental discharges to the surface will be managed in order to protect fresh water.

(GW-316) DCP Midstream LP. Elisabeth Klein, Principal Environmental Specialist, 370 17th Street, Suite 2500 Denver, Colorado 80202, has submitted a renewal application for the previously approved discharge plan for their Paige Hat Mesa Compressor Station located in the SW/4, NE/4 of Section 11, Township 21 South, Range 32 East, NMPM, Lea County, New Mexico. The compressor station is located approximately 1.75 miles south of the SR-176 and US-180 intersection. Approximately 6 barrels per day of wastewater is stored in above ground tanks prior to being transported off-site to OCD approved facilities. Groundwater most likely to be affected by a spill, leak or accidental discharge is at a depth of approximately 175 feet below the ground surface, with a total dissolved solids concentration of 1,000 mg/L. The discharge plan addresses how oilfield products and wastes will be properly handled, stored, and disposed of, including how spills, leaks, and other accidental discharges to the surface will be managed in order to protect fresh water.

The NMOCD has determined that the application is administratively complete and has prepared a draft permit. The NMOCD will accept comments and statements of interest regarding this application and will create a facility-specific mailing list for persons who wish to receive future notices. Persons interested in obtaining further information, submitting comments or requesting to be on a facility-specific mailing list for future notices may contact the Environmental Bureau Chief of the Oil Conservation Division at the address given above. The administrative completeness determination and draft permit may be viewed at the above address between 8:00 a.m. and 4:00 p.m., Monday through Friday, or may also be viewed at the NMOCD web site <http://www.emnrd.state.nm.us/ocd/>. Persons interested in obtaining a copy of the application and draft permit may contact the NMOCD at the address given above. Prior to ruling on any proposed discharge permit or major modification, the Director shall allow a period of at least thirty (30) days after the date of publication of this notice, during which interested persons may submit comments or request that NMOCD hold a public hearing. Requests for a public hearing shall set forth the reasons why a hearing should be held. A hearing will be held if the Director determines that there is significant public interest.

If no public hearing is held, the Director will approve or disapprove the proposed permit based on information available, including all comments received. If a public hearing is held, the director will approve or disapprove the proposed permit based on information

in the permit application and information submitted at the hearing.

Para obtener más información sobre esta solicitud en español, sírvase comunicarse por favor: New Mexico Energy, Minerals and Natural Resources Department (Depto. Del Energia, Minerals y Recursos Naturales de Nuevo México), Oil Conservation Division (Depto. Conservación Del Petróleo), 1220 South St. Francis Drive, Santa Fe, New Mexico (Contacto: Dorothy Phillips, 505-476-3461)

GIVEN under the Seal of New Mexico Oil Conservation Commission at Santa Fe, New Mexico, on this 20th day of April 2007.

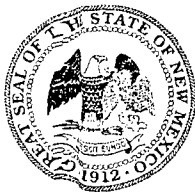
STATE OF  
NEW MEXICO  
OIL CONSERVATION  
DIVISION

SEAL

Mark Fesmire,  
Director

Legal #80841

Pub. Apr. 26, 2007



# NEW MEXICO ENERGY, MINERALS and NATURAL RESOURCES DEPARTMENT

**BILL RICHARDSON**

Governor

**Joanna Prukop**

Cabinet Secretary

**Mark E. Fesmire, P.E.**

Director

**Oil Conservation Division**

April 20, 2007

Ms. Elisabeth Klein  
DCP Midstream, LP  
370 17th Street, Suite 2500  
Denver, Colorado 80202

**Re: Discharge Plan Renewal Permit (GW-162)  
DCP Midstream, LP  
Antelope Ridge Gas Plant  
Lea County, New Mexico**

Dear Ms. Klein:

The New Mexico Oil Conservation Division (NMOCD) has received DCP Midstream LP's request and initial fee, dated February 26, 2007, to renew GW-162 for the Antelope Ridge Gas Plant located in the SW/4 SE/4 of Section 15, Township 23 South, Range 34 East, NMPM, Lea County, New Mexico. The initial submittal provided the required information in order to deem the application "administratively" complete.

Therefore, the New Mexico Water Quality Control Commission regulations (WQCC) notice requirements of 20.6.2.3108 NMAC must be satisfied and demonstrated to the NMOCD. NMOCD will provide public notice pursuant to the WQCC notice requirements of 20.6.2.3108 NMAC to determine if there is any public interest.

If there are any questions regarding this matter, please do not hesitate to contact me at (505) 476-3491 or [carlj.chavez@state.nm.us](mailto:carlj.chavez@state.nm.us). On behalf of the staff of the NMOCD, I wish to thank you and your staff for your cooperation during this discharge permit review.

Sincerely,

Carl J. Chavez

Environmental Engineer

CJC/cjc

xc: OCD District I Office, Hobbs

Chavez, Carl J, EMNRD

To: Chavez, Carl J, EMNRD  
Cc: Price, Wayne, EMNRD  
Subject: Duke Energy Field Services- Note to File

On January 1, 2007, Wayne Price and Carl Chavez of the Oil Conservation Division (OCD) contacted Ruth Lang of Duke Energy Field Services at (303) 605-1713 and left a phone message regarding the large number of expired facilities (see attachment) where the discharge plan was not renewed within 120 or in advance of their expiration. Wayne Price referred to Ms. Lang's December 2, 2006 e-mail message regarding "Duke Energy Field Services Expired Discharge Plan Facilities."

Mr. Price informed Ms. Lang that all discharge plan renewal applications need to be submitted to the OCD for review by March 1, 2007. In addition, she was informed that the OCD will be issuing an Notice of Violation for neglecting to renew its discharge plan permits with the OCD.

Carl J. Chavez, CHMM  
New Mexico Energy, Minerals & Natural Resources Dept.  
Oil Conservation Division, Environmental Bureau  
1220 South St. Francis Dr., Santa Fe, New Mexico 87505  
Office: (505) 476-3491  
Fax: (505) 476-3462  
E-mail: [CarlJChavez@state.nm.us](mailto:CarlJChavez@state.nm.us)  
Website: <http://www.emnrd.state.nm.us/ocd/>  
(Pollution Prevention Guidance is under "Publications")

1/5/2007

Permit ID	Facility	Company	Status	Expired	Contact	phone	e-mail	Comments
150	Pure Gold "28" CS	Duke	A	11/22/03	Lisabeth Klein	303-605-1778	<a href="mailto:eaklein@duke-energy.com">eaklein@duke-energy.com</a>	Request 120 day extension to 4/1/07
162	Antelope Ridge Gas Plant	Duke	A	3/23/04	Lisabeth Klein	303-605-1778	<a href="mailto:eaklein@duke-energy.com">eaklein@duke-energy.com</a>	Request 120 day extension to 4/1/07
167	Malaga CS	Duke	A	7/25/04	Lisabeth Klein	303-605-1778	<a href="mailto:eaklein@duke-energy.com">eaklein@duke-energy.com</a>	Request 120 day extension to 4/1/07
311	Cotton Draw CS	Duke	A	1/6/05	Lisabeth Klein	303-605-1778	<a href="mailto:eaklein@duke-energy.com">eaklein@duke-energy.com</a>	Request 120 day extension to 4/1/07
316	Hat Mesa CS	Duke	A	1/6/05	Lisabeth Klein	303-605-1778	<a href="mailto:eaklein@duke-energy.com">eaklein@duke-energy.com</a>	Request 120 day extension to 4/1/07
176	Boot Leg CS	Duke	A	1/20/05	Lisabeth Klein	303-605-1778	<a href="mailto:eaklein@duke-energy.com">eaklein@duke-energy.com</a>	Request 120 day extension to 4/1/07
227	Lee CS	Duke	I	12/28/05	Lisabeth Klein	303-605-1778	<a href="mailto:eaklein@duke-energy.com">eaklein@duke-energy.com</a>	Submitted correspondence to Ben Stone during meeting in Sept. 2006
168	Feagen Booster Station	Duke	I	12/27/04	Lisabeth Klein	303-605-1778	<a href="mailto:eaklein@duke-energy.com">eaklein@duke-energy.com</a>	Closed 2/1/05
177	Maljamar CS	Duke	A	3/21/05	Lisabeth Klein	303-605-1778	<a href="mailto:eaklein@duke-energy.com">eaklein@duke-energy.com</a>	Request 120 day extension to 4/1/07
178	Wonton CS	Duke	A	3/21/05	Lisabeth Klein	303-605-1778	<a href="mailto:eaklein@duke-energy.com">eaklein@duke-energy.com</a>	Request 120 day extension to 4/1/07
24	Avalon Gas Plant	Duke	A	9/18/05	Lisabeth Klein	303-605-1778	<a href="mailto:eaklein@duke-energy.com">eaklein@duke-energy.com</a>	Request 120 day extension to 4/1/07
163	Apex CS	Duke	A	4/29/04	Lisabeth Klein	303-605-1778	<a href="mailto:eaklein@duke-energy.com">eaklein@duke-energy.com</a>	Request 120 day extension to 4/1/07
175	Hobbs Gas Process Plant	Duke	A	1/9/05	Lisabeth Klein	303-605-1778	<a href="mailto:eaklein@duke-energy.com">eaklein@duke-energy.com</a>	Request 120 day extension to 4/1/07
16	Eunice Gas Plant	Duke	A	4/25/09	Lisabeth Klein	303-605-1778	<a href="mailto:eaklein@duke-energy.com">eaklein@duke-energy.com</a>	Request 120 day extension to 4/1/07
139	CP-1 CS	Duke	A	3/23/04	Lisabeth Klein	303-605-1778	<a href="mailto:eaklein@duke-energy.com">eaklein@duke-energy.com</a>	Closed 10/15/03
42	Indian Hills Gas Plant	Duke	I	4/6/2002	Lisabeth Klein	303-605-1778	<a href="mailto:eaklein@duke-energy.com">eaklein@duke-energy.com</a>	Dismantled

THE SANTA FE  
**NEW MEXICAN** RECEIVED  
Founded 1849

FEB 02 2004

OIL CONSERVATION  
DIVISION

NM OIL CONSERVATION DV-EMNRDI

~~MARY ANAYA~~ *Wayne Price*

1220 ST. FRANCIS DR

ATT MARY ANAYA

SANTA FE NM 87505

ALTERNATE ACCOUNT: 56689

AD NUMBER: 00047832 ACCOUNT: 00002212

LEGAL NO: 76042 P.O. #: 04-199-050340

309 LINES 1 TIME(S) 135.96

AFFIDAVIT: 5.50

TAX: 9.46

TOTAL: 150.92

**AFFIDAVIT OF PUBLICATION**

STATE OF NEW MEXICO  
COUNTY OF SANTA FE

I, B. Perner, being first duly sworn declare and say that I am Legal Advertising Representative of THE SANTA FE NEW MEXICAN, a daily newspaper published in the English language, and having a general circulation in the Counties of Santa Fe and Los Alamos, State of New Mexico and being a newspaper duly qualified to publish legal notices and advertisements under the provisions of Chapter 167 on Session Laws of 1937; that the publication # 76042 a copy of which is hereto attached was published in said newspaper 1 day(s) between 01/29/2004 and 01/29/2004 and that the notice was published in the newspaper proper and not in any supplement; the first date of publication being on the 29th day of January, 2004 and that the undersigned has personal knowledge of the matter and things set forth in this affidavit.

/S/

*B Perner*  
LEGAL ADVERTISEMENT REPRESENTATIVE

Subscribed and sworn to before me on this 29th day of January, 2004

Notary

*Laura E. Harding*

Commission Expires:

*11/23/07*



AFFIDAVIT OF PUBLICATION

State of New Mexico,  
County of Lea.

I, KATHI BEARDEN

Publisher

of the Hobbs News-Sun, a  
newspaper published at  
Hobbs, New Mexico, do solemnly  
swear that the clipping attached  
hereto was published once a  
week in the regular and entire  
issue of said paper, and not a  
supplement thereof for a period.

of 1  
\_\_\_\_\_ weeks.

Beginning with the issue dated

January 28 2004  
and ending with the issue dated

January 28 2004




Publisher

Sworn and subscribed to before

me this 28th day of

January 2004

  
Notary Public.

My Commission expires  
November 27, 2004  
(Seal)

LEGAL NOTICE  
January 28, 2004

NOTICE OF PUBLICATION

STATE OF NEW MEXICO  
ENERGY, MINERALS AND NATURAL RESOURCES DEPARTMENT  
OIL CONSERVATION DIVISION

Notice is hereby given that pursuant to New Mexico Water Quality Control Commission Regulations, the following discharge permit application(s) has been submitted to the Director of the Oil Conservation Division, 1220 S. Saint Francis Drive, Santa Fe, New Mexico 87505, Telephone (505) 476-3440:

(GW-162) – ConocoPhillips Midstream Operations, Joyce Miley, (281) 293-4498, P.O. Box 2197-Humble 3036, Houston, Texas 77252-2197, has submitted a discharge permit renewal application for their Antelope Ridge Gas Processing Plant located in the SW/4, SE/4 Quarter of Section 15, Township 23 South, Range 34 East, NMPM, Lea County, New Mexico. Natural gas products, waste oil and water is stored in above ground tanks prior to being transported off-site to OCD approved facilities. The discharge permit addresses how oilfield products and waste will be properly handled, stored, and disposed of, including how spills, leaks, and other accidental discharges to the surface will be managed in order to protect fresh water. Groundwater most likely to be affected in the event of an accidental discharge is at a depth of approximately 400 feet with a total dissolved solids concentration of 55 mg/L.

Any interested person may obtain further information from the Oil Conservation Division and may submit written comments to the Director of the Oil Conservation Division at the address given above. The discharge permit application and draft discharge permit may be viewed at the above address between 8:00 a.m. and 4:00 p.m., Monday through Friday. The draft discharge permit may also be viewed at OCD's web site <http://www.emnrd.state.nm.us/oed/>. Prior to ruling on any proposed discharge permit or its modification, the Director of the Oil Conservation Division shall allow at least thirty (30) days after the date of publication of this notice during which comments may be submitted to him and a public hearing may be requested by any interested person. Requests for a public hearing shall set forth the reasons why a hearing should be held. A hearing will be held if the Director determines there is significant public interest.

If no public hearing is held, the Director will approve or disapprove the proposed permit based on information available. If a public hearing is held, the director will approve or disapprove the proposed permit based on information in the permit and information submitted at the hearing.

GIVEN under the Seal of New Mexico Oil Conservation Commission at Santa Fe, New Mexico, on this 23th day of January 23, 2004.

SEAL

STATE OF NEW MEXICO  
OIL CONSERVATION DIVISION  
LORI WROTENBERY, Director  
#20390

This newspaper is duly qualified to publish legal notices or advertisements within the meaning of Section 3, Chapter 167, Laws of 1937, and payment of fees for said publication has been made.

01100060000 02568510  
State of New Mexico Oil &  
1220 S. St. Francis  
Santa Fe, NM 87505

**NOTICE OF  
PUBLICATION**

**STATE OF  
NEW MEXICO  
ENERGY, MINERALS  
AND NATURAL  
RESOURCES  
DEPARTMENT  
OIL CONSERVATION  
DIVISION**

Notice is hereby given that pursuant to New Mexico Water Quality Control Commission Regulations, the following discharge permit application(s) has been submitted to the Director of the Oil Conservation Division, 1220 S. Saint Francis Drive, Santa Fe, New Mexico 87505, Telephone (505) 476-3440:

**(GW-150) - Conoco-Phillips Midstream Operations, Joyce Miley, (281) 293-4498, P.O. Box 2197-Humble 3036, Houston, Texas 77252-2197, has submitted a discharge permit renewal application for the Pure Gold "28" Compressor Station located in the NW/4 NW/4 of Section 28, Township 28 South, Range 31 East, NMPM, Eddy County, New Mexico. All wastes generated will be stored in closed top receptacles prior to offsite disposal or recycling at an OCD approved site. Ground water most likely to be affected in the event of an accidental discharge is at a depth of approximately 160-200 feet with a total dissolved solids concentration of approximately 201-3500 mg/l. Natural gas products, waste oil and water is stored in above ground tanks prior to being transported off-site to OCD approved facilities. The**

**discharge permit addresses how oilfield products and waste will be properly handled, stored, and disposed of, including how spills, leaks, and other accidental discharges to the surface will be managed in order to protect fresh water.**

**(GW-162) - Conoco-Phillips Midstream Operations, Joyce Miley, (281) 293-4498, P.O. Box 2197-Humble 3036, Houston, Texas 77252-2197, has submitted a discharge permit renewal application for their Antelope Ridge Gas Processing Plant located in the SW/4, SE/4 Quarter of Section 15, Township 23 South, Range 34 East, NMPM, Lea County, New Mexico. Natural gas products, waste oil and water is stored in above ground tanks prior to being transported off-site to OCD approved facilities. The discharge permit addresses how oilfield products and waste will be properly handled, stored, and disposed of, including how spills, leaks, and other accidental discharges to the surface will be managed in order to protect fresh water. Groundwater most likely to be affected in the event of an accidental discharge is at a depth of approximately 400 feet with a total dissolved solids concentration of 55 mg/L.**

Any interested person may obtain further information from the Oil Conservation Division and may submit written comments to the Director of the Oil Conservation Division at the address given above. The discharge permit application

and draft discharge permit may be viewed at the above address between 8:00 a.m. and 4:00 p.m., Monday through Friday. The draft discharge permit may also be viewed at OCD's web site <http://www.emnrd.state.nm.us/ocd/>. Prior to ruling on any proposed discharge permit or its modification, the Director of the Oil Conservation Division shall allow at least thirty (30) days after the date of publication of this notice during which comments may be submitted to him and a public hearing may be requested by any interested person. Requests for a public hearing shall set forth the reasons why a hearing should be held. A hearing will be held if the Director determines there is significant public interest.

If no public hearing is held, the Director will approve or disapprove the proposed permit based on information available. If a public hearing is held, the director will approve or disapprove the proposed permit based on information in the permit and information submitted at the hearing.

GIVEN under the Seal of New Mexico Oil Conservation Commission at Santa Fe, New Mexico, on this 23th day of January 23, 2004.

**STATE OF  
NEW MEXICO  
OIL CONSERVATION  
DIVISION**

**S E A L**

**LORI WROTENBERY,  
Director**

**Legal #76042  
Pub. January 29, 2004**

## **NOTICE OF PUBLICATION**

### **STATE OF NEW MEXICO ENERGY, MINERALS AND NATURAL RESOURCES DEPARTMENT OIL CONSERVATION DIVISION**

Notice is hereby given that pursuant to New Mexico Water Quality Control Commission Regulations, the following discharge permit application(s) has been submitted to the Director of the Oil Conservation Division, 1220 S. Saint Francis Drive, Santa Fe, New Mexico 87505, Telephone (505) 476-3440:

**(GW-162) – ConocoPhillips Midstream Operations, Joyce Miley, (281) 293-4498, P.O. Box 2197-Humble 3036, Houston, Texas 77252-2197, has submitted a discharge permit renewal application for their Antelope Ridge Gas Processing Plant located in the SW/4, SE/4 Quarter of Section 15, Township 23 South, Range 34 East, NMPM, Lea County, New Mexico. Natural gas products, waste oil and water is stored in above ground tanks prior to being transported off-site to OCD approved facilities. The discharge permit addresses how oilfield products and waste will be properly handled, stored, and disposed of, including how spills, leaks, and other accidental discharges to the surface will be managed in order to protect fresh water. Groundwater most likely to be affected in the event of an accidental discharge is at a depth of approximately 400 feet with a total dissolved solids concentration of 55 mg/L.**

Any interested person may obtain further information from the Oil Conservation Division and may submit written comments to the Director of the Oil Conservation Division at the address given above. The discharge permit application and draft discharge permit may be viewed at the above address between 8:00 a.m. and 4:00 p.m., Monday through Friday. The draft discharge permit may also be viewed at OCD's web site <http://www.emnrd.state.nm.us/oed/>. Prior to ruling on any proposed discharge permit or its modification, the Director of the Oil Conservation Division shall allow at least thirty (30) days after the date of publication of this notice during which comments may be submitted to him and a public hearing may be requested by any interested person. Requests for a public hearing shall set forth the reasons why a hearing should be held. A hearing will be held if the Director determines there is significant public interest.

If no public hearing is held, the Director will approve or disapprove the proposed permit based on information available. If a public hearing is held, the director will approve or disapprove the proposed permit based on information in the permit and information submitted at the hearing.

GIVEN under the Seal of New Mexico Oil Conservation Commission at Santa Fe, New Mexico, on this 23<sup>th</sup> day of January 23, 2004.

**STATE OF NEW MEXICO  
OIL CONSERVATION DIVISION**

S E A L

LORI WROTENBERY, Director



DUKE ENERGY FIELD SERVICES  
370 17th Street  
Suite 2500  
Denver, CO 80202  
303 595 3331

*changed RBDMS  
11-9-04*

October 20, 2004

**UPS Next Day Air** (Tracking No. 1Z F46 915 22 1003 178 4)

Mr. Roger Anderson, Chief, Environmental Bureau  
New Mexico Energy, Minerals  
& Natural Resources Department  
Oil Conservation Division  
1220 South St. Francis Drive  
Santa Fe, NM 87505

SUBJECT: Notification of Change of Ownership

Dear Mr. Anderson:

Duke Energy Field Services, LP (DEFS) is submitting notification of a change of ownership for facilities in Eddy and Lea Counties, New Mexico. Effective April 30, 2004, DEFS is the new owner of the facilities identified in the attached list. The attachment lists the facility name, county, legal location, operating status, and, if applicable, discharge permit number.

DEFS will comply with the terms and conditions of the previously approved discharge permits issued to ConocoPhillips or its predecessors. However, by agreeing to comply with those permits, DEFS does not waive its objection to the applicability of the Water Quality Control Commission regulations for facilities that do not have and do not intend to have any discharges that may move directly or indirectly into groundwater, nor does it waive its position that the Oil and Gas Act regulations, not the WQCC regulations, apply to gathering system facilities.

If you have any questions regarding this transfer of ownership and/or the discharge permits, please call me at (303) 605-1717.

Sincerely,  
Duke Energy Field Services, LP

Karin Kimura  
Senior Environmental Specialist

Attachment

Duke Energy Field Services, LP  
Notification of Change in Ownership  
Southeast New Mexico  
Effective April 30, 2004

OPERATING STATUS	FACILITY NAME	COUNTY	LEGAL DESCRIPTION	DISCHARGE PERMIT NO.
✓ Active	Antelope Ridge Gas Plant	Lea	SE 15, T23S, R34E	GW-162 (expired)
✓ Active	Apex CS	Lea	NENW 36, T18S, R36E	GW-163 (expired)
✓ Active	Bootleg CS	Lea	SWSE 18, T22S, R33E	GW-176
✓ Active	Cabin Lake CS	Eddy	SESE 34, T21S, R30E	None
✓ Active	Cal-Mon CS (aka Llano-Cal-Mon CS)	Eddy	SENE 35, T23S, R31E	GW-143
✓ Active	Cal-Mon VRU (aka CVRU)	Lea	NESE 16, T24S, R32E	None
✓ Active	Carlsbad (aka CB, South CB) Master	Eddy	SWSE 31, T22S, R27E	None
✓ Active	Catclaw Pig	Lea	Center NW 30, T18S, R36E	None
✓ Active	Cedar Canyon CS (aka Buckstate CS)	Eddy	SESE 9, T24S, R29E	GW-296
✓ Active	Cotton Draw CS	Lea	NENW & NWNE 18, T25S, R32E	GW-311
✓ Active	Cotton Draw Drip (dismantled)	Lea	NWNW25, T23S, R32E	None
✓ Active	Craft Drip (former Dehy)	Eddy	NWNW 19, T24S, R29E	None
✓ Active	Cunningham First Cut	Lea	NWSW 27, T18S, R36E	None
✓ Active	Exxon DA CS (AKA - "DA CS")	Lea	SESW 31, T21S, R35E	None
✓ Active	Gas Co. North Meter	Lea	S 27, T18S, R36E	None
✓ Active	Grama Ridge #1	Lea	SWNW3, T22S, R34E	None
✓ Active	Grama Ridge Launcher	Lea	NESE 29, T21S, R34E	None
✓ Will be reactivated as Paige CS	Hat Mesa (aka #2) CS	Lea	SWNE 11, T21S, R32E	GW-316
✓ Active	Hobbs Gas Plant	Lea	SWNE 36, T18S, R36E	GW-175

OPERATING STATUS	FACILITY NAME	COUNTY	LEGAL DESCRIPTION	DISCHARGE PERMIT NO.
✓ Active	IMC Pig Receiver (former drip)	Eddy	SWSW 1, T22S, R29E	None
✓ Inactive	Lee CS (inactive) (aka Gillespie/Feagan CS)	Lea	NENE 24, T17S, R35E	GW-227
✓ Active	Livingston Ridge CS	Eddy	SWNE 24, T22S, R31E	None
✓ Active	Maddox First Cut (aka CS or Scrubber)	Lea	SWSE 25, T18S, R36E	None
✓ Active	NEC (aka Northeast Carlsbad) CS	Eddy	Lot 9, Sec 6, T21S, R28E	GW-280
✓ Active	P&P Malaga (aka Titan/Malaga, Low Pressure Gathering Compressor Station) CS	Eddy	SWNE 3, T24S, R28E	GW-167 (expired)
✓ Active	Pardue CS (aka Oxy/Oryx Pardue CS)	Eddy	SENE 10, T23S, R28E	GW-288
✓ Active	PCA Dehy	Eddy	NWSE 27, T25S, R29E	None
✓ Active	PCA Junction (former Drip, pigs active)	Eddy	NWSE 11, T20S, R30E	None
✓ Active	Pure Gold 28 CS	Eddy	NWNW 28, T23S, R31E	GW-150
✓ Active	Turkey Track CS	Eddy	NWSW 27, T18S, R31E	None
✓ Active	West Turkey Track CS	Eddy	SW 6, T19S, R30E	None
✓ Active	Zia Booster (aka CS)	Lea	SESE 18, T19S, R32E	GW-145
✓ Active	Zia Gas Plant	Lea	NENE 19, T19S, R32E	GW-145
✓ Dismantled	Navaho Dehy (dismantled)	Eddy	NWSE 20, T17S, R27E	None
✓ Inactive	Barnaval Draw CS	Eddy	SWNW3, T17S, R29E	None
✓ Inactive	Concarb East Dehy (dismantled)	Lea	SWNE 4, T21S, R36E	None

	OPERATING STATUS	FACILITY NAME	COUNTY	LEGAL DESCRIPTION	DISCHARGE PERMIT NO.
✓	Inactive	Concarb West Drip	Lea	SENW 13, T21S, R34E	None
✓	Inactive	Delhi Connect (aka Delhi Drip, dismantled)	Lea	NESW 28, T19S, R36E	None
✓	Inactive	Fasken Dehy	Lea	NWSE 25, T19S, R33E	None
✓	Inactive	Gas Co. South Meter	Lea	SW 34, T18S, R36E	None
✓	Inactive	Hobbs Office	Lea	NENE 33, T18S, R38E	None
✓	Inactive	Kerr Mac Station (former JT Plant)	Eddy	NWSW 4, T21S, R31E	None
✓	Inactive	Rattlesnake CS	Lea	SE 33, T26S, R33E	None
✓	Inactive	Rattlesnake Flats Delivery (inactive)	Lea	NENE 8, T26S, R34E	None
✓	Inactive	Read & Stevens (aka R&S/Norlea) CS	Lea	SWSW 10, T20S, R34E	None
✓	Inactive	Red Lake CS (dismantled)	Eddy	NESW 10, T17S, R28E	None
✓	Inactive	White City (former Dehy)	Eddy	NESE 10, T24S, R26E	None
✓	Closed	Yates Bright (aka Bright/Federal) CS	Lea	NENW 21, T19S, R33E	None
✓	Inactive	Bass Turkey Track (Dehy)	Eddy	SENE 2, T19S, R28E	None
✓	Inactive	Enron 6 " (aka HNG 6", one idle AST)	Eddy	NESE 22, T24S, R27E	None
✓	Inactive	FNM (aka P&M) Delivery	Lea	SESE 10, T19S, R36E	None
✓	Inactive	Getty (aka Texaco) 2 State Dehy	Lea	SWNW 3, T22S, R34E	None
✓	Inactive	Getty 36 (aka 36) Dehy	Lea	SENW 36, T21S, R34E	None

OPERATING STATUS	FACILITY NAME	COUNTY	LEGAL DESCRIPTION	DISCHARGE PERMIT NO.
✓ Inactive	Inexco Nauman (aka Nauman) Dehy	Eddy	NESE 12, T21S, R26E	None
✓ Inactive	Lovelace Dehy	Eddy	SWSW 27, T22S, R27E	None
✓ Inactive	Neeley (aka Sante Fe Neely) Dehy	Eddy	NENE28, T22S, R27E	None
✓ Inactive	NEL (Northeast Loving)	Eddy	NESE9, T23S, R28E	None
✓ Inactive	NGPL Dehy	Eddy	SESW31, T22S, R27E	None
✓ Inactive	North Maduro Dehy	Lea	SENE 20, T19S, R33E	None
✓ Inactive	Queen Lake (aka QL 36) Dehy	Eddy	NESE 36, T24S, R28E	None
✓ Inactive	Read & Stevens TT	Eddy	NESE 25, T18S, R28E	None
✓ Closed	Strata CS (1 idle separator)	Lea	NA	None
✓ Inactive	Swearinger	Eddy	NWSE4, T23S, R28E	None
✓ Inactive	Topaz Dehy	Lea	SWNW 30, T20S, R34E	None
✓ Inactive	TW Atoka Scrubber (one idle scrubber)	Eddy	SESE 3, T18S, R27E	None
✓ Inactive	TWS Carlsbad Dehy (dismantled)	Eddy	SWNE18, T23S, R27E	None
✓ Inactive	Weems (aka Sante Fe Weems) Dehy	Eddy	NWNW 27, T22S, R27E	None



STATE OF NEW MEXICO  
ENERGY, MINERALS AND NATURAL RESOURCES DEPARTMENT

EEE 0000515

Date: 11-21-03

OFFICIAL RECEIPT



\* E E E 0 0 0 0 5 1 5 \*

Received From: F. Frank Engle & Son, Inc.

Dollars

Center Code	Revenue Code	Amount	Work Order No.
0740			100-00

Center Code	Revenue Code	Amount	Work Order No.

State Treasurer Deposit Number \_\_\_\_\_

Total \$ 100.00

Description: \_\_\_\_\_

\_\_\_\_\_  
\_\_\_\_\_  
\_\_\_\_\_  
\_\_\_\_\_

Signed: [Signature]

ASD-White Copy / Customer-Yellow Copy / Retained in Book-Pink Copy



**Flatrock Energy**  
PARTNERS

15600 San Pedro, Suite 100  
San Antonio, Texas 78232  
P: 210.494.6777  
F: 210.494.6762

11/19/2003

State of New Mexico  
Energy Minerals and Natural Resources  
Oil Conservation Division  
1220 South St. Francis Dr.  
Santa Fe, NM 87505

Re: Renewal Application for Discharge Plan GW-280  
Antelope Ridge Gas Plant  
Lea County, New Mexico

*GW-162*

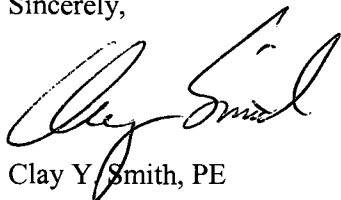
Dear Sir or Madam:

Flatrock Energy Partners on behalf of Raptor Gas Transmission LLC and ConocoPhillips Company Midstream Operations (ConocoPhillips) hereby submits the attached documentation and application for renewal of Discharge Plan GW-280. This submittal includes the application filing fee of \$100.

In order to maintain consistency with other facilities in this area, ConocoPhillips Midstream requests that this discharge plan conditions be rolled in with or similar to the "blanket" discharge permit issued on June 16, 1998 (see appendix B for blanket discharge permit documentation and conditions). The blanket discharge permit provides coverage for other facilities in the area that are operated by ConocoPhillips.

Please contact me at 210 494 6777 or Joyce Miley at (281) 293-4498 if you have questions or require additional information.

Sincerely,



Clay Y. Smith, PE

cc: OCD Discharge Permit files – Hobbs, NM  
Jeff Driver – Hobbs, NM  
Joyce Miley – Houston, TX

ACKNOWLEDGEMENT OF RECEIPT  
OF CHECK/CASH

I hereby acknowledge receipt of check No. [REDACTED] dated 11/19/03,  
or cash received on \_\_\_\_\_ in the amount of \$ 100.00  
from Flatrock Engr. & Enviro.  
for Antelope Ridge G.P. GW-280  
(Facility Name) (GP No.)  
Submitted by: [Signature] Date: 11-21-03  
Submitted to ASD by: \_\_\_\_\_ Date: \_\_\_\_\_  
Received in ASD by: \_\_\_\_\_ Date: \_\_\_\_\_

Filing Fee ☒ New Facility \_\_\_\_\_ Renewal ☒  
Modification \_\_\_\_\_ Other \_\_\_\_\_  
(separately)

Organization Code 521.07 Applicable FY 2001

To be deposited in the Water Quality Management Fund.

Full Payment ☒ or Annual Increment \_\_\_\_\_

<b>FLATROCK ENGINEERING AND ENVIRONMENTAL, LTD.</b> 15600 SAN PEDRO 100 SAN ANTONIO, TX 78232-3738 210-494-6777		<b>THE FROST NATIONAL BANK</b> MISSOURI CITY, TX 77459 30-3/1143
PAY TO THE ORDER OF <u>State of New Mexico</u>		\$ <u>100.00</u>
One Hundred and 00/100*****		DOLLARS
State of New Mexico		
MEMO <u>OCD Permit Application Fee- GW280</u>		<u>A. Scott Martin</u> MP



Rudy Quiroz  
Process Foreman  
Natural Gas & Gas Products

Conoco Inc.  
921 W. Sanger  
Hobbs, NM 88240  
505-391-1950

CERTIFIED MAIL 7000 1670 0009 8293 1100  
Return Receipt Requested

May 30, 2002

Mr. Wayne Price  
Oil Conservation Division  
Energy and Minerals Department  
1220 South St. Francis Dr.  
Santa Fe, NM 87505

RECEIVED  
JUN 10 2002  
Environmental Bureau  
Oil Conservation Division

**RE: GW-162 Discharge Plan Below Grade Sumps Inspection**

Dear Mr. Price:

In accordance with New Mexico Water Quality Control Commission Regulations the following actions were performed. The Oil Conservation Division in Santa Fe and Hobbs, New Mexico was verbally contacted on May 20, 2002. The Conoco Antelope Ridge Plant gave 72-hour notice that it would be inspecting below grade sumps. On May 24, 2002 the plants below grade sumps were inspected. The results of the underground sump inspection are enclosed in this report.

If you have any questions or require additional information, please call me at (505) 391-1950. Thank you for your assistance.

Sincerely,

Rudy Quiroz

CC: Joyce Miley  
Mark Bishop  
File: 215-5-1

**Conoco Antelope Ridge Plant  
Discharge Plan GW-162  
Annual Report**

**Below Grade Sump Pits**

The Antelope Ridge Plant has two underground sumps, which are open to the atmosphere and cannot be pressured tested. Each sump is constructed with double containment. The primary containment is made of fiberglass and the secondary containment is constructed with concrete. These sumps were cleaned and visually inspected for integrity. The sumps showed no signs of deterioration or leakage. The sumps will be inspected annually.

RECEIVED  
JUN 10 2007  
Environmental Bureau  
Oil Conservation Division



Mark Bishop  
Environmental Specialist  
SH&E Services  
Natural Gas & Gas Products

OIL CONSERVATION DIV.

01 APR 16 PM 3:21

Conoco Inc.  
P.O. Box 90  
Maljamar NM 88264  
Phone 505-676-3519  
Cell (281) 380-0018  
E-mail [mark.a.bishop@usa.conoco.com](mailto:mark.a.bishop@usa.conoco.com)

04/06/2001

**Return Receipt Requested  
Certified Mail No.  
7099 3220 0001 4997 4121**

Mr. Wayne Price  
New Mexico Energy, Minerals & Natural Resources Department  
Oil Conservation Division  
2040 South Pacheco Street  
Santa Fe, NM 87505

**Re: Discharge Plan GW – 162, Antelope Ridge Gas Plant  
Storm water Runoff Plan**

Dear Mr. Price:

Please find the attached Precipitation/Storm water Runoff Control Plan as required in the above referenced OCD Groundwater Discharge Permit.

Conoco, Inc. also requests that the inspection frequency required in Discharge Plan Approval Condition 11 (Housekeeping) be changed to monthly. This will allow us to maintain consistency with other facility Discharge Plans.

If you have any questions or require more information please contact me at 505-676-3519.

Sincerely,

Mark Bishop

CC:

Joyce Miley  
File: Env xxxxx

**Conoco, Inc.**  
**Antelope Ridge Gas Plant,**  
**Discharge Plan GW – 162, Approval Condition 15**  
**Storm Water Runoff Control Plan**

The Antelope Ridge Gas Plant will minimize precipitation/storm water runoff at the facility through exposure minimization practices. These practices lessen the potential for storm water to come in contact with process and waste streams. Precipitation that comes in contact with process equipment is contained in bermed or containment areas and allowed to evaporate. The facility process and waste stream containment structures are maintained to minimize erosion and prevent surface accumulations. Storage tanks are inspected periodically to monitor fluid levels.

A storm water plan at this facility is not a requirement of the EPA (40 CFR 122.26(b)(14)). This regulation specifies that oil and gas operations that discharge contaminated storm water at any time between November 16, 1987 and October 1, 1992, and that are currently not authorized by an NPDES permit, must apply for a permit. Operators of oil and gas exploration, production, processing, or treatment operations or transmission facilities, that are not required to submit a permit application as of October 1, 1992 in accordance with 40 CFR 122.26(c)(1)(iii), but that after October 1, 1992 have a discharge of a reportable quantity of oil or a hazardous substance (in a storm water discharge) for which notification is required pursuant to either 40 CFR 110.6, 117.21, or 302.6, must apply for a permit.

Since Conoco, Inc. has not had a discharge at this facility of a reportable quantity of oil or a hazardous substance (in a storm water discharge) for which notification is required pursuant to either 40 CFR 110.6, 117.21, or 302.6, a storm water discharge permit is not required for the Antelope Ridge Gas Plant.

**Conoco Antelope Ridge Plant  
Discharge Plan GW-162  
Annual Report**

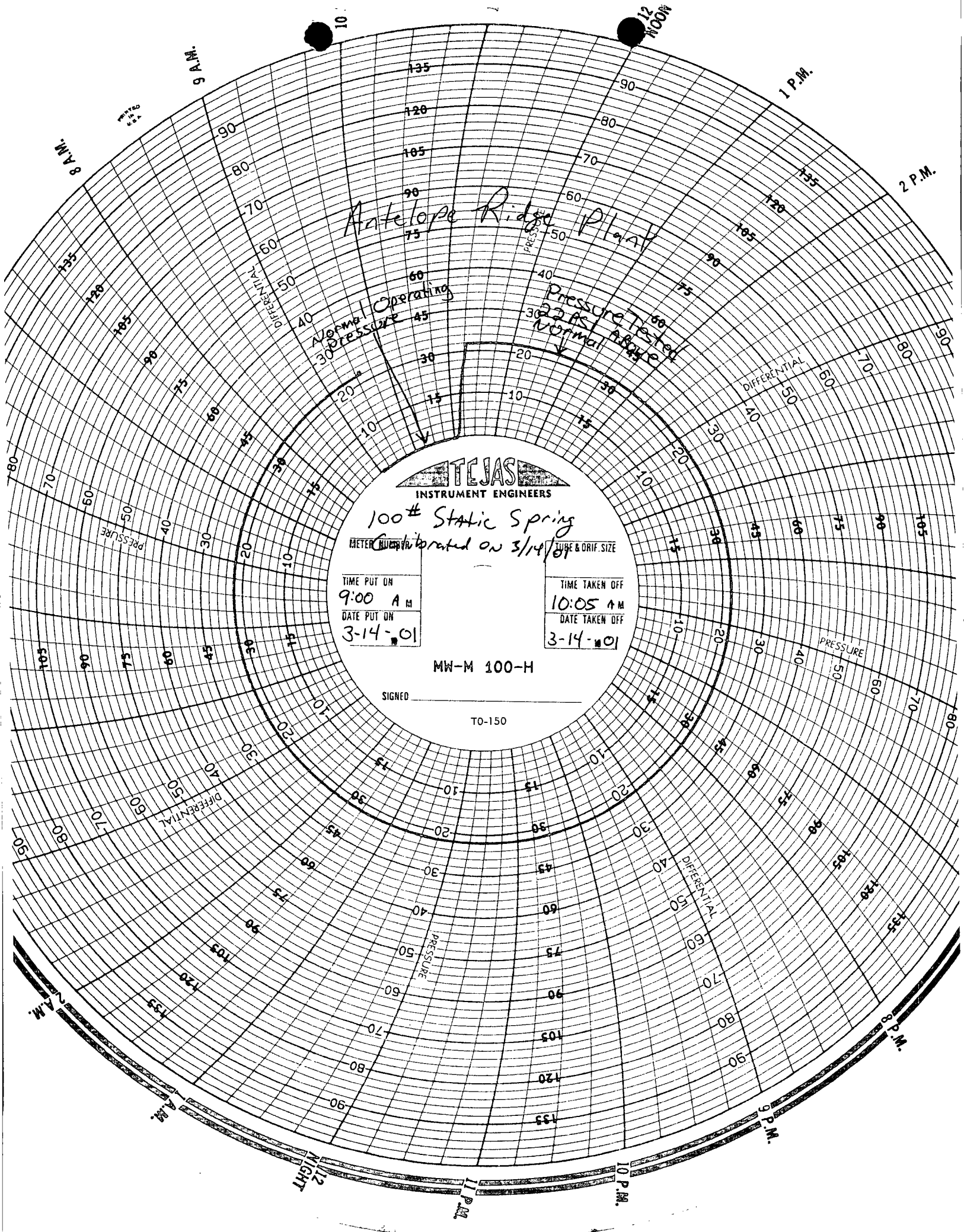
**Underground Water Discharge Line**

The underground water discharge line was tested to demonstrate mechanical integrity. The method of test was hydro pressure test. The discharge line was pressure tested to 22 pounds per square inch gauge, which is 17 pounds above operating pressure. The result of this test was recorded on a chart recorder. The pressure was held for one hour with no detection of any pressure loss. A copy of the pressure chart is included with this report.

**Below Grade Sump Pits**

The Antelope Ridge Plant has two underground sumps, which are open to the atmosphere and can not be pressured tested. Each sump is constructed with double containment. The primary containment is made of fiberglass and the secondary containment is constructed with concrete. These sumps were cleaned and visually inspected for integrity. The sumps showed no signs of deterioration or leakage. The sumps will be inspected annually.





Antelope Ridge Plant

Normal Operating  
30 Pressure

Pressure Tested  
30 Pressure  
Normal



100# Static Spring

Calibrated on 3/14/01

TIME PUT ON  
9:00 A.M.  
DATE PUT ON  
3-14-01

TIME TAKEN OFF  
10:05 A.M.  
DATE TAKEN OFF  
3-14-01

MW-M 100-H

SIGNED

T0-150



Joyce M. Miley  
Environmental Consultant  
Engineering and Compliance  
Natural Gas & Gas Products Department

Conoco Inc.  
600 N. Dairy Ashford Rd.  
P.O. Box 2197, HU3036  
Houston, TX 77252  
Telephone: (281) 293-4498  
Facsimile: (281) 293-1214

DEC 18 2000

CONSERVATION DIVISION

November 30, 2000

**Certified Mail No. 7099 3220 0003 1150 1803**  
**Return Receipt Requested**

Mr. Roger Anderson  
Environmental Bureau Chief  
New Mexico Energy, Minerals & Natural Resources Department  
Oil Conservation Division  
2040 South Pacheco Street  
Santa Fe, New Mexico 87505

Re: Change of Ownership  
Conoco Inc., Natural Gas & Gas Products Department

Dear Mr. Anderson:

Effective December 1, 2000, Conoco Inc., Natural Gas & Gas Products Department (NG&GP) assumed ownership of LG&E Natural Gathering & Processing LLC, and LG&E Natural Pipeline LLC (LG&E). These LG&E entities, in turn, own certain natural gas facilities in SE New Mexico. These facilities and their OCD Groundwater Discharge numbers are listed in the table below.

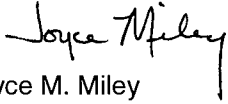
Facility Name	OCD Groundwater Discharge Permit
Antelope Ridge Gas Plant	GW-162
Hobbs Gas Plant	GW-175
Apex Compressor Station	GW-163
Bootleg (aka. NBR) Compressor Station	GW-176
Bright/Yates Compressor Station	GW-160
Cedar Canyon Compressor Station	GW-296
Cal-Mon Compressor Station	GW-143
NE Carlsbad Compressor Station	GW-280
Cotton Draw Compressor Station	GW-311
Hat Mesa Compressor Station	GW-316
Lee (aka. Lea and/or Fagan/Gillespie) Compressor Station	GW-227
Pardue Farms Compressor Station	GW-288
Pure Gold 28 Compressor Station	GW-150
Parker & Parsley (aka. Malaga) Compressor Station	GW-167

Several of these locations have conditions in their permits that require the new owner to supply a written commitment to comply with the terms and conditions of the previously approved discharge plans. LG&E has informed Conoco that all above locations are in compliance with the discharge plans. Conoco has copies of all of the approval letters and LG&E signed conditions of approval for these locations. We agree to continue to operate the locations in conformance with the groundwater permits, the approval conditions and the OCD regulations.

In addition, pursuant to certain requirements of the transaction in which Conoco acquired the entities, the names of certain entities have been changed to the following: Raptor Natural Gathering & Processing LLC and Raptor Natural Pipeline LLC (in each case replacing LG&E with Raptor).

Conoco Inc. requests that all future correspondence concerning these facilities be forwarded to me at the address above. If you have any questions or require additional information, please do not hesitate to contact Mr. Mark Bishop at (505) 623-5659 or myself at (281) 293-4498.

Sincerely,



Joyce M. Miley

cc.:

Ms. Patricia Merrill  
LG&E Energy Corp.  
220 West Main Street  
PO Box 32030  
Louisville, KY 40232-2030

**Certified Mail No. 7099 3220 0003 1150 1797**  
**Return Receipt Requested**

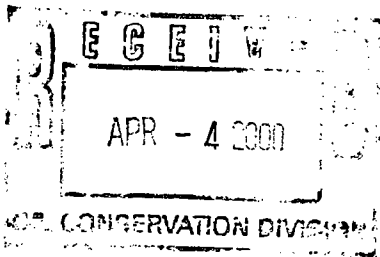
# The Santa Fe New Mexican

Since 1849. We Read You.

NM OIL CONSERVATION DIVISION  
ATTN: DONNA DOMINGUEZ  
2040 S. PACHECO ST.  
SANTA FE, NM 87505

AD NUMBER: 139961      ACCOUNT: 56689  
LEGAL NO: 67124      P.O.#: 00199000278  
289 LINES      1 time(s) at \$ 127.39  
AFFIDAVITS:      5.25  
TAX:      8.29  
TOTAL:      140.93

## AFFIDAVIT OF PUBLICATION



STATE OF NEW MEXICO  
COUNTY OF SANTA FE

I, B. Perner being first duly sworn declare and say that I am Legal Advertising Representative of THE SANTA FE NEW MEXICAN, a daily newspaper published in the English language, and having a general circulation in the Counties of Santa Fe and Los Alamos, State of New Mexico and being a Newspaper duly qualified to publish legal notices and advertisements under the provisions of Chapter 167 on Session Laws of 1937; that the publication #67124 a copy of which is hereto attached was published in said newspaper 1 day(s) between 03/30/2000 and 03/30/2000 and that the notice was published in the newspaper proper and not in any supplement; the first publication being on the 30 day of March, 2000 and that the undersigned has personal knowledge of the matter and things set forth in this affidavit.

/S/

Betty Perner  
LEGAL ADVERTISEMENT REPRESENTATIVE

Subscribed and sworn to before me on this  
29 day of March A.D., 2000

Notary

Candace R. Duxton  
Commission Expires 11/16/2003

APPROVED  
Wm Perner

**NOTICE OF PUBLICATION**

**STATE OF NEW MEXICO  
ENERGY, MINERALS AND  
NATURAL RESOURCES  
DEPARTMENT  
OIL CONSERVATION  
DIVISION**

Notice is hereby given that pursuant to New Mexico Water Quality Control Commission Regulations, the following discharge plan applications has been submitted to the Director of the Oil Conservation Division, 2040 South Pacheco, Santa Fe, New Mexico 87505, Telephone (505) 827-7131:

(GW-151) - El Paso Natural Gas Company, Tom Martinez, Senior Environmental Engineer, One Petroleum Center, Bldg. 2, 3300 North "A" Street, Midland, Texas, 79705, has submitted a renewal application for the previously approved discharge plan for their Eunice "B" Compressor Station located in the NW/4, NW/4 Quarter of Section 5, Township 21 South, Range 36 East, NMPM, Lea County, New Mexico. Approximately 50 gallons per day of waste water will be stored in above ground steel tanks prior to disposal at an OCD approved off-site disposal facility. Groundwater most likely to be affected in the event of an accidental discharge is at a depth of approximately 160 feet with a total dissolved solids concentration of 1000 mg/L. The discharge plan addresses how spills, leaks, and other accidental discharges to the surface will be managed.

(GW-162) - LG&E Natural Gathering and Processing Co., J.R. Delaney, Operations Manager, 921 W. Sanger, Hobbs, New Mexico, 88240, has submitted a renewal application for the previously approved discharge plan for their Antelope Ridge Gas Processing Plant located in the SW/4, SE/4 Quarter of Section 15, Township 23 South, Range 34 East, NMPM, Lea County, New Mexico. Approximately 2100 gallons per day of waste water will be stored in above ground steel tanks prior to disposal at an OCD approved off-site disposal facility. Groundwater most likely to be affected in the event of an accidental discharge is at a depth of approximately 400 feet with a total dissolved solids concentration of 55 mg/L. The discharge plan addresses how spills, leaks, and other accidental discharges to the surface will be managed.

(GW-163) - LG&E Natural Gathering and Processing

Co., J.R. Delaney, Operations Manager, 921 W. Sanger, Hobbs, New Mexico, 88240, has submitted a renewal application for the previously approved discharge plan for their Apex Compressor Station located in the SE/4, NE/4 Quarter of Section 36, Township 18 South, Range 36 East, NMPM, Lea County, New Mexico. Approximately 42 gallons per day of waste water will be stored in above ground steel tanks prior to disposal at an OCD approved off-site disposal facility. Groundwater most likely to be affected in the event of an accidental discharge is at a depth of approximately 40 feet with a total dissolved solids concentration of 300 mg/L. The discharge plan addresses how spills, leaks and other accidental discharges to the surface will be managed.

Any interested person may obtain further information from the Oil Conservation Division and may submit written comments to the

Director of the Oil Conservation Division at the address given above. The discharge plan application may be viewed at the above address between 8:00 a.m. and 4:00 p.m., Monday through Friday. Prior to ruling on any proposed discharge plan or its modification, the Director of the Oil Conservation Division shall allow at least thirty (30) days after the date of publication of his notice during which comments may be submitted to him and a public hearing may be requested by any interested person. Requests for a public hearing shall set forth the reasons why a hearing should be held. A hearing will be held if the Director determines there is significant public interest.

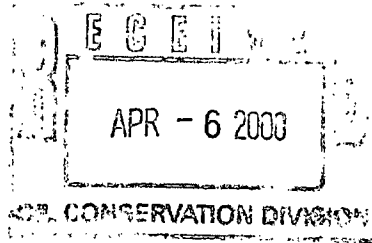
If no public hearing is held, the Director will approve or disapprove the proposed plan based on information available. If a public hearing is held, the director will approve or disapprove the proposed plan based on information in the plan and information submitted at the hearing.

GIVEN under the Seal of New Mexico Oil Conservation Commission at Santa Fe, New Mexico, on this 24th day of March, 2000.

STATE OF NEW MEXICO  
OIL CONSERVATION  
DIVISION  
LORI WROTENBERY,  
Director

Legal #67124  
Pub. March 30, 2000

April 5, 2000



**LG&E ENERGY**  
**MARKETING**

**LG&E Natural Gathering & Processing Co.**  
921 West Sanger  
Hobbs, New Mexico 88240  
505-393-2153  
505-393-0381 FAX

Mr. Wayne Price  
State of New Mexico  
Energy, Minerals and Natural Resources Department  
Oil Conservation Division  
2040 S. Pacheco Street  
Santa Fe, New Mexico 87505

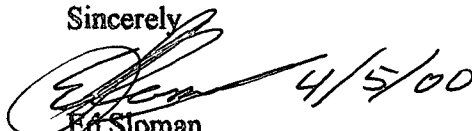
Dear Mr. Price,

Please find enclosed the necessary checks for the Discharge Fees for Antelope Ridge Gas Plant, and Apex Compressor Station.

Antelope Ridge Gas Plant; GW-162 in the amount of	\$1,667.50
Apex Compressor Station; GW-163 in the amount of	\$ 690.00

If you have any questions concerning this payment please give me a call. As always, thank you for all of your help.

Sincerely

  
Ed Stoman  
Supervisor  
Operations Support

A SUBSIDIARY OF  
**LG&E ENERGY**

ACKNOWLEDGEMENT OF RECEIPT  
OF CHECK/CASH

I hereby acknowledge receipt of check No. [REDACTED] dated 9/4/00  
or cash received on \_\_\_\_\_ in the amount of \$ 1,667.50  
from LG&E NATURAL GATHERING & PROCESSING  
for ANTELOPE RING GAS PLANT GW-162

Submitted by: WAYNE PRICE (Facility Name) Date: 9/4/00 (DP No.)  
Submitted to ASD by: [Signature] Date: "  
Received in ASD by: \_\_\_\_\_ Date: \_\_\_\_\_

Filing Fee \_\_\_\_\_ New Facility \_\_\_\_\_ Renewal ☒  
Modification \_\_\_\_\_ Other \_\_\_\_\_ (specify)

Organization Code 521.07 Applicable FY 2000

To be deposited in the Water Quality Management Fund.

Full Payment ☒ or Annual Increment \_\_\_\_\_

THIS CHECK IS VOID WITHOUT A COLORED BACKGROUND AND AN ARTIFICIAL WATERMARK CERTIFICATION SEAL ON THE BACK - HOLD AT ANGLE TO VIEW SEAL

**LG&E Natural Gathering & Processing**

2777 Stemmons Frwy, Suite 1700  
Dallas TX 75207

PNC Bank, National Association  
Jeannette PA

60-162  
433

Pay

Date	Amount
04/04/00	\$*****1,667.50

ONE THOUSAND SIX HUNDRED SIXTY SEVEN AND 50/100 \*\*\*\*\*

Dollars

TO  
THE  
ORDER  
OF

**WATER QUALITY MANAGEMENT FUND**  
STATE OF NEW MEXICO  
PO BOX 2088  
SANTA FE NM 87504-2088

Patricia A. Lockwood

SIGNATURE HAS A COLORED BACKGROUND - BORDER CONTAINS MICROPRINTING

*S&E Natural Gathering & Processing*

*PNC Bank, National Association*

*STUB CHECK NO.*

*1 OF 1*

*DATE: 04/04/00*

<i>INVOICE NUMBER</i>	<i>DATE</i>	<i>PAYMENT ADVICE</i>	<i>GROSS</i>	<i>DISCOUNT</i>	<i>NET</i>
<i>REQ033000</i>	<i>03/30/00</i>		<i>1,667.50</i>		<i>1,667.50</i>
<i>for GW-162</i>					
<i>67184</i>	<i>WATER QUALITY MANAGEMENT FUND</i>	<i>TOTALS</i>	<i>1,667.50</i>		<i>1,667.50</i>



NOTICE OF PUBLICATION

STATE OF NEW MEXICO  
ENERGY, MINERALS AND NATURAL RESOURCES DEPARTMENT  
OIL CONSERVATION DIVISION

Notice is hereby given that pursuant to New Mexico Water Quality Control Commission Regulations, the following discharge plan applications has been submitted to the Director of the Oil Conservation Division, 2040 South Pacheco, Santa Fe, New Mexico 87505, Telephone (505) 827-7131:

(GW-151) - El Paso Natural Gas Company, Tom Martinez, Senior Environmental Engineer, One Petroleum Center, Bldg. 2, 3300 North "A" Street, Midland, Texas, 79705, has submitted a renewal application for the previously approved discharge plan for their Eunice "B" Compressor Station located in the NW/4 NW/4 Quarter of Section 5, Township 21 South, Range 36 East, NMPM, Lea County, New Mexico. Approximately 50 gallons per day of waste water will be stored in above ground steel tanks prior to disposal at an OCD approved off-site disposal facility. Groundwater most likely to be affected in the event of an accidental discharge is at a depth of approximately 160 feet with a total dissolved solids concentration of 1000 mg/L. The discharge plan addresses how spills, leaks, and other accidental discharges to the surface will be managed.

(GW-162) - LG&E Natural Gathering and Processing Co., J.R. Delaney, Operations Manager, 921 W. Sanger, Hobbs, New Mexico, 88240, has submitted a renewal application for the previously approved discharge plan for their Antelope Ridge Gas Processing Plant located in the SW/4, SE/4 Quarter of Section 15, Township 23 South, Range 34 East, NMPM, Lea County, New Mexico. Approximately 2100 gallons per day of waste water will be stored in above ground steel tanks prior to disposal at an OCD approved off-site disposal facility. Groundwater most likely to be affected in the event of an accidental discharge is at a depth of approximately 400 feet with a total dissolved solids concentration of 55 mg/L. The discharge plan addresses how spills, leaks, and other accidental discharges to the surface will be managed.

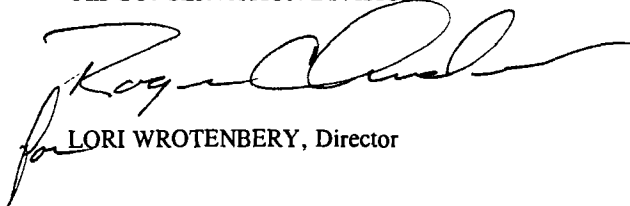
(GW-163) - LG&E Natural Gathering and Processing Co., J.R. Delaney, Operations Manager, 921 W. Sanger, Hobbs, New Mexico, 88240, has submitted a renewal application for the previously approved discharge plan for their Apex Compressor Station located in the SE/4, NE/4 Quarter of Section 36, Township 18 South, Range 36 East, NMPM, Lea County, New Mexico. Approximately 42 gallons per day of waste water will be stored in above ground steel tanks prior to disposal at an OCD approved off-site disposal facility. Groundwater most likely to be affected in the event of an accidental discharge is at a depth of approximately 40 feet with a total dissolved solids concentration of 300 mg/L. The discharge plan addresses how spills, leaks, and other accidental discharges to the surface will be managed.

Any interested person may obtain further information from the Oil Conservation Division and may submit written comments to the Director of the Oil Conservation Division at the address given above. The discharge plan application may be viewed at the above address between 8:00 a.m. and 4:00 p.m., Monday through Friday. Prior to ruling on any proposed discharge plan or its modification, the Director of the Oil Conservation Division shall allow at least thirty (30) days after the date of publication of this notice during which comments may be submitted to him and a public hearing may be requested by any interested person. Requests for a public hearing shall set forth the reasons why a hearing should be held. A hearing will be held if the Director determines there is significant public interest.

If no public hearing is held, the Director will approve or disapprove the proposed plan based on information available. If a public hearing is held, the director will approve or disapprove the proposed plan based on information in the plan and information submitted at the hearing.

GIVEN under the Seal of New Mexico Oil Conservation Commission at Santa Fe, New Mexico, on this 24th day of March, 2000.

STATE OF NEW MEXICO  
OIL CONSERVATION DIVISION



LORI WROTENBERY, Director

S E A L

ACKNOWLEDGEMENT OF RECEIPT  
OF CHECK/CASH

I hereby acknowledge receipt of check No. [REDACTED] dated 3/13/00,  
or cash received on \_\_\_\_\_ in the amount of \$ 50.00  
from Llano, Inc.  
for Antelope Ridge G.P. GW-162  
Submitted by: [Signature] Date: 3-17-00  
Submitted to ASD by: \_\_\_\_\_ Date: \_\_\_\_\_  
Received in ASD by: \_\_\_\_\_ Date: \_\_\_\_\_  
Filing Fee ☒ New Facility \_\_\_\_\_ Renewal \_\_\_\_\_  
Modification \_\_\_\_\_ Other \_\_\_\_\_  
Organization Code 521.07 Applicable FY 2000

To be deposited in the Water Quality Management Fund.  
Full Payment ☒ or Annual Increment \_\_\_\_\_

**LLANO, INC.**

BOX 1320  
HOBBS, NEW MEXICO 88240

SUNWEST BANK OF HOBBS, N.A.  
HOBBS, NEW MEXICO 88240

95-321  
1122

CHECK DATE CHECK NO

03-13-00

CHECK AMOUNT

\$50.00\*\*\*\*\*

PAY TO THE ORDER OF

Water Quality Management Fund

State of New Mexico  
OCD

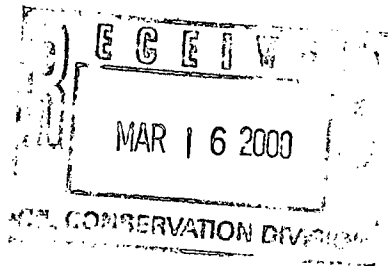
LLANO, INC. - GENERAL ACCOUNT

VOID AFTER 90 DAYS

LLANO, INC.

INVOICE NO.	INVOICE DATE	DESCRIPTION	GROSS AMOUNT	DISCOUNT	NET AMOUNT
		Renewal of discharge Plan Antelope Ridge Plant GW-162			
CHECK NUMBER		TOTALS >			\$50.00

March 10, 2000



**LG&E ENERGY**  
**MARKETING**

**LG&E Natural Gathering & Processing Co.**  
921 West Sanger  
Hobbs, New Mexico 88240  
505-393-2153  
505-393-0381 FAX

Mr. Roger C. Anderson  
Environmental Bureau Chief  
New Mexico Energy, Minerals & Natural Resources Department  
Oil Conservation Division  
2040 South Pacheco Street  
Santa Fe, New Mexico 87505

Dear Mr. Anderson,

Please find attached to this cover letter our Discharge Plan renewal application for our Antelope Ridge Gas Plant. Discharge Plan number GW-162. Additionally attached is a check for fifty dollars (\$50.00) for application fee. An additional check for \$ 1,667.50 will follow upon your direction.

The only changes in this plant since the original Discharge Plane, GW-162, was approved are as follows:

1. A refrigeration unit has been installed on the front of the plant to improve the plant efficiency.
2. A Vapor recovery unit has been installed on the plant to recover vapors from the condensate and process these vapors as gas which improves plant recovery and reduces condensate loss to the atmosphere.

Both of these units are electric driven and do not increase the discharges of this plant. By virtue of the process, these units actually decrease the plant discharges. You have had the opportunity review these units on your recent tour of this facility.

If you have any questions concerning this Discharge Plan renewal, please feel free to call me at your convenience.

Sincerely

Ed Sloman  
Supervisor  
Operations Support

A SUBSIDIARY OF  
**LG&E ENERGY**

## **Price, Wayne**

---

**From:** System Administrator[SMTP:postmaster@lgeenergy.com]  
**Sent:** Friday, February 25, 2000 3:11 PM  
**To:** Price, Wayne  
**Subject:** Delivered: Discharge Plans



Discharge Plans

<<Discharge Plans>> Your message

**To:** 'ed.sloman@lgeenergy.com'  
**Subject:** Discharge Plans  
**Sent:** Fri, 25 Feb 2000 17:06:18 -0500

was delivered to the following recipient(s):

Sloman, Ed on Fri, 25 Feb 2000 17:10:58 -0500  
MSEXCH:MSEExchangeMTA:HOBBS:HONMMONTFS1

## **Price, Wayne**

---

**From:** Price, Wayne  
**Sent:** Friday, February 25, 2000 3:06 PM  
**To:** 'ed.sloman@lgeenergy.com'  
**Subject:** Discharge Plans

Dear Ed:

We received the fees& Info for GW-150,175 & 176 Thanks!

After reviewing the files our records reflect that the following Discharge Plan sites have expired!

Antelope Ridge Gas Plant	GW-162	filing fee \$50 + Renewal fee \$1667.50
Apex Compressor St.	GW-163	filing fee \$50 + Renewal fee \$ 690.00
Low Press Gathering	GW-167	filing fee \$50 + Renewal fee \$ 0.00

Please submit the discharge plan application plus fees by March 10, 2000.

# OCD ENVIRONMENTAL BUREAU

## SITE INSPECTION SHEET

DATE: 1-26-00 Time: 1:30

Type of Facility: Refinery ☐ Gas Plant ☒ Compressor St. ☐ Brine St. ☐ OilField Service Co. ☐  
Surface Waste Mgt. Facility ☐ E&P Site ☐ Crude Oil Pump Station ☐  
Other ☐ \_\_\_\_\_

Discharge Plan: No ☐ Yes ☒ DP# \_\_\_\_\_

FACILITY NAME: Antelope Ridge G.P.

PHYSICAL LOCATION: \_\_\_\_\_

Legal: QRT \_\_\_\_\_ QRT \_\_\_\_\_ Sec \_\_\_\_\_ TS \_\_\_\_\_ R \_\_\_\_\_ County Lea

OWNER/OPERATOR (NAME) LG&E

Contact Person: Ed Sloman Tele:# \_\_\_\_\_

### MAILING

ADDRESS: \_\_\_\_\_ State \_\_\_\_\_ ZIP \_\_\_\_\_

Owner/Operator Rep's: Randy Dunaway,

OCD INSPECTORS: J. Ford, W. Price, R. Anderson, D. Williams

1. **Drum Storage:** All drums containing materials other than fresh water must be stored on an impermeable pad with curbing. All empty drums will be stored on their sides with the bungs in and lined up on a horizontal plane. Chemicals in other containers such as sacks or buckets will also be stored on an impermeable pad and curb type containment.

2. **Process Areas:** All process and maintenance areas which show evidence that leaks and spills are reaching the ground surface must be either paved and curbed or have some type of spill collection device incorporated into the design.

3. **Above Ground Tanks:** All above ground tanks which contain fluids other than fresh water must be bermed to contain a volume of one-third more than the total volume of the largest tank or of all interconnected tanks. All new tanks or existing tanks that undergo a major modification, as determined by the Division, must be placed within an impermeable bermed enclosure.

NEW MEXICO ENERGY, MINERALS AND NATURAL RESOURCES DEPARTMENT

OIL CONSERVATION DIVISION  
2040 S. Pacheco  
Santa Fe, New Mexico 87505

August 21, 1995

**CERTIFIED MAIL**  
**RETURN RECEIPT NO. P-176-012-173**

Mr. J.R. Delaney  
Hadson Pipeline Companies  
921 W. Sanger  
Hobbs, New Mexico 88240

**Re: Discharge Plan (GW-162)**  
**Antelope Ridge Gas Plant**  
**Lea County, New Mexico**

Dear Mr. Delaney:

The Oil Conservation Division (OCD) has received Hadson Pipeline Company's' (Hadson) request dated August 18, 1995, submitted by Bob Short and Associates, Inc. on behalf of Hadson, requesting approval to spread 16,000 pounds of linde molecular sieve, generated at the above referenced facility, onto the ground and/or roads at the Antelope Ridge Gas Plant.

The request is hereby approved with the following conditions:

1. The molecular sieve cannot be discharged outside the boundaries of the above referenced facility proper.
2. The molecular sieve will be spread in lifts no more than 2".
3. The molecular sieve will not be allowed to enter any drainage, arroyos, streams or any water ways.

Please be advised this approval does not relieve Hadson of liability should their operation result in pollution of surface water, ground water or the environment. In addition, OCD approval does not relieve Hadson of responsibility for compliance with other federal, state and/or local regulations.

If you have any questions call me at (505) 827-7153.

Sincerely,



Chris Eustice  
Environmental Geologist

cc: OCD Hobbs Office



# FAX TRANSMISSION

**BOB SHORT & ASSOCIATES, INC.**

4849 GREENVILLE AVE, SUITE 1070

DALLAS, TEXAS 75206

(214) 739-1271

FAX: (214) 692-7195

**To:** MR. ROGER ANDERSON  
NEW MEXICO OIL  
CONSERVATION DIVISION

**Date:** AUGUST 18, 1995

**Fax #:** (505) 827-8177

**Pages:** 1 page including this page.

**From:** HOWARD WINTERS

**Subject:** MOL. SIEVE DISPOSAL AT HADSON PIPELINE COMPANIES ANTELOPE  
RIDGE GAS PLANT

PURSUANT TO OUR CONSERVATION THIS DATE, BOB SHORT AND ASSOCIATES IS REQUESTING APPROVAL FOR DISPOSAL ON BEHALF OF HADSON OF 16,000 POUNDS OF LINDE MOLECULAR SIEVES, TYPE 4ADG, 1/8" SPHERICAL BEADS. HADSON REQUESTS APPROVAL TO DISPOSE OF THE BEADS ON THEIR PLANT SITE ON THE GRAVELED/CHATTED AREA AND PLANT ROADS.

HADSON HAS AN APPROVED "DISCHARGE PLAN GW-162" FOR THIS LEA COUNTY, NEW MEXICO SITE. IT DOES NOT SEEM TO ADDRESS THE MOL SIEVE DISPOSAL. SINCE HADSON PLANS TO REPLACE THE OLD MOL SIEVE NEXT TUESDAY, 8/22/95, WE RESPECTFULLY REQUEST YOUR EXPEDITED APPROVAL ON OR BEFORE MONDAY, 8/21/95. PLEASE PHONE OR FAX YOUR APPROVAL TO MR. SCOTT MARTIN AT HADSON'S DALLAS OFFICES AS FOLLOWS:

PHONE: (214) 640-6800  
FAX: (214) 640-6936 OR 6801

THANK YOU,

  
HOWARD WINTERS

# HADSON

OIL CONSERVATION DIVISION  
RECEIVED

91 APR 28 AM 8 50

April 26, 1994

Mr. William J. LeMay  
Director  
Oil Conservation Division  
Post Office Box 2088  
Santa Fe, New Mexico 87504

Re: Discharge Plan GW-162  
Antelope Ridge Plant  
Lea County, New Mexico

Dear Mr. LeMay:

Enclosed are the Testing Procedures and Waste Water Analysis your office has requested.

If you have questions or comments, do not hesitate to call.

Very truly yours,

HADSON GAS GATHERING &  
PROCESSING COMPANY



Ed Stoman

Enclosures

Llano File No. P.04.20.94.

LLANO, INC.

A SUBSIDIARY OF HADSON ENERGY PRODUCTS & SERVICES, INC.

521 W. Sengor / Hobbs, New Mexico 88240  
Telephone (505) 393-2153 / FAX (505) 393-0301

# HADSON

OIL CONSERVATION DIVISION  
RECEIVED

'94 APR 11 AM 8 50

April 12, 1994

Mr. William J. LeMay  
Director  
Oil Conservation Division  
Energy, Minerals, and Natural Resources Department  
State of New Mexico  
Post Office Box 2086  
State Land Building  
Santa Fe, New Mexico 87504

Re: Discharge Plan GW - 162  
Antelope Ridge Gas Plant  
Lea County, New Mexico

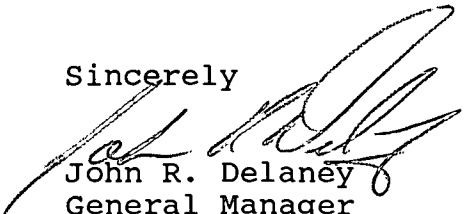
Dear Mr. LeMay,

Discharge Plan GW - 162 has been received as an approved Discharge Plan. Attached please find a check for the amount of \$3,335.00 in compliance with WQCC Regulation 3-114 discharge plan fee. Assessing a flat rate of three thousand three hundred thirty five dollars for a new gas processing plant discharge plan. This also satisfies requirement #1 on the Discharge Plan Requirements enclose with the notice of approved discharge plan.

Following this letter of payment of fees, there will be the required information as set forth by the Discharge Plan Requirements. At this time steps have been taken to assure compliance with the Requirements of this Discharge Plan.

Thank you and your staff for your assistance and cooperation in this matter of mutual concern.

Sincerely



John R. Delaney  
General Manager  
Hadson Pipeline Companies

LLANO, INC.

A SUBSIDIARY OF HADSON ENERGY PRODUCTS & SERVICES, INC.

921 W. Sanger / Hobbs, New Mexico 88240  
Telephone (505) 393-2153 / FAX (505) 393-0381



Mr. Robert L. Myers II  
Petroleum Engineer Specialist  
Oil Conservation Division  
P. O. Box 2088  
Santa Fe, New Mexico 87504-2308

RECEIVED

MAR 02 1994

OIL CONSERVATION DIV  
SANTA FE

Dear Mr. Myers,

In reply to your inquiry concerning the Discharge Plan for our Antelope Ridge Plant, the following information is provided.

- Q. What is the facility's gas processing capacity?
- A. The Antelope Ridge plant has been designed to process thirty million standard cubic feet, (30MMSCF/D) of natural gas per day.
- Q. Supply the OCD with the design of the secondary containment system used for the process skid and the compressor skid sumps.
- A. The sump tanks are fiberglass. These tanks are set inside of a concrete "vault". The concrete vault is the secondary containment for the sumps. Leak detection is visual. If the sump tank leaks, the concrete "vault" will contain the liquid, and an operator will be able to see the liquid inside the concrete vault.
- Q. For discharge plan approval, the OCD requires a comprehensive analysis of the final wastewater effluent, prior to disposal.
- A. The waste water we will have will come from wash water, or rain, etc. As of yet, we have not had any wash water, and do not have enough waste water to obtain samples for our test. As soon as we have accumulated a sufficient amount we will submit a sample for testing, and will forward the results of this test to your office.

LLANO, INC.

A SUBSIDIARY OF HADSON ENERGY PRODUCTS & SERVICES, INC.

921 W. Sanger / Hobbs, New Mexico 88240  
Telephone (505) 393-2153 / FAX (505) 393-0301

Q. Sections VII and VIII of the discharge plan application seem to state that used engine oil, as well as other liquid hydrocarbon wastes, are commingled with the produced water and waste water in storage tanks until disposed of offsite by an OCD-Approved disposal company. Used engine oils are not permitted to be injected into OCD-Approved Class II wells. Submit an alternative disposal method for these wastes.

A. The used engine oils will be contained in the sump tanks, and will be recovered by an oil company, or the vendor to be recycled, or disposed of in the proper manner. The used engine oils will not be commingled with the produced water and taken to an offsite disposal well. Any waste water which might be accumulated in the sump tank will be gravity separated from any used engine oils, and the water will be properly disposed of, along with produced water.

Q. Are there any domestic wastes produced at this site, and if so how are they disposed of?

A. As referred to as domestic waste, the plant office has restroom facilities, sink, and a shower. The sewage and waste water created from these facilities goes to a septic tank which was installed just for this purpose.

Q. How are solid wastes managed, including office trash and used oil filters.

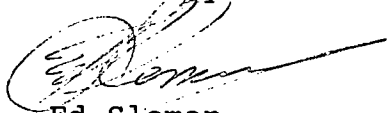
A. Office trash, and other such solid waste are placed in a receptacle which has been provided by Waste Management of Southeast New Mexico. We do pay this company to pick up, and dispose of our trash. Our used oil filters are properly drained, and are picked up by Procycle Metals, 320 Scroggins Road, Springtown, Texas 76082; for recycling and, or disposal.

- Q. Submit a list of all chemicals used at this facility, including those used for gas processing, engine maintenance, and cleaning.
- A. I have attached a "M.S.D.S." for all chemicals used at our Antelope Ridge Plant. Those chemicals used in processing, and engine cleaning etc. are included.
- Q. OCD requires that underground drain lines be tested once every five years. Submit a proposed method and schedule for the positive pressure testing of all underground lines.
- A. With regards to the drain lines, they were tested to 5 psi at the time the plant was re-worked. Approximately every five years, during the first quarter of the year, they will be retested. The proposed method will be to fill a standing pipe full of water and see if the level in the standing pipe holds. The standing pipe will be at least six feet tall, and the test will be held for at least thirty minutes.

Please find additional copies of the original application for discharge plan, along with additional copies of this supplement report.

If you have any further questions regarding this discharge plan please contact me at (505) 393-2153.

Sincerely,



Ed Sloman  
Supervisor, Operations Support  
Hadson Pipeline Companies

ACKNOWLEDGEMENT OF RECEIPT  
OF CHECK/CASH

I hereby acknowledge receipt of check No. [REDACTED] dated 3/24/94,  
or cash received on April 22, 1994 in the amount of \$ 3335.00  
from Llano Inc. (Minerals Inc.)

for Antelope Ridge Gas Plant GW-162

Submitted by: \_\_\_\_\_ Date: \_\_\_\_\_

Submitted to ASD by: Robert Myers Date: 4/22/94

Received in ASD by: Cherie Moore Date: 4/22/94

Filing Fee \_\_\_\_\_ New Facility K Renewal \_\_\_\_\_

Modification \_\_\_\_\_ Other \_\_\_\_\_

Organization Code 521.07 Applicable FY 94

To be deposited in the Water Quality Management Fund.

Full Payment \_\_\_\_\_ or Annual Increment \_\_\_\_\_

P.O. BOX 26770  
OKLAHOMA CITY, OKLAHOMA 73126-6770

Minerals, Inc.

CHECK NUMBER

DATE

03/23/94

OWNER NUMBER

PAY

THREE-THOUSAND-THREE-HUNDRED-THIRTY-FIVE-DOLLARS  
-ZERO-CENTS\*\*\*\*\*

\*\*\*\*\*

OIL CONSERVATION DIVISION

PO BOX 2088

SANTA FE, NM

NMED - WATER QUALITY MANAGEMENT

87501

CHECK AMOUNT

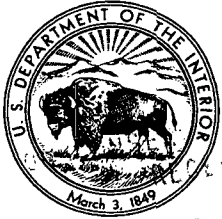
\*\*\*\$3,335.00\*

TO  
THE  
ORDER  
OF

Payable through

Mellon Bank (DE) N.A., Wilmington, DE 19899  
Mellon Bank (East) N.A., Philadelphia, PA 19102

VOID AFTER 90 DAYS FROM DATE



**UNITED STATES  
DEPARTMENT OF THE INTERIOR  
FISH AND WILDLIFE SERVICE**  
Ecological Services  
Suite D, 3530 Pan American Highway, NE  
Albuquerque, New Mexico 87107

February 28, 1994

Permit# GW94019

Mr. William J. Lemay  
Director, State of New Mexico  
Oil Conservation Division  
P.O. Box 2088  
Santa Fe, New Mexico 87504-2088

Dear Mr. Lemay:

This responds to the notice of publication received by the U.S. Fish and Wildlife Service (Service) on February 15, 1994, regarding the Oil Conservation Division (OCD) discharge plan application submitted by Hadson Pipeline Companies.

GW-162 Hadson Pipeline Companies has submitted an application for a discharge plan for the Antelope Ridge Gas Processing Plant located in the SW/4, SE/4, Section 15, Township 23 S., R. 34 E., Lea County, New Mexico. Approximately 2100 gallons per day of process wastewater and natural gas liquids will be collected and trucked off-site to be separated, with the wastewater to be disposed of in a UIC-permitted Class II disposal well.

The Service has determined there will be no effects on fish, shellfish, and wildlife resources in New Mexico and have no further comments.

If you have any questions please contact Mary Orms at 883-7877.

Sincerely,

Jennifer Fowler-Propst  
State Supervisor

cc:  
Director, New Mexico Department of Game and Fish, Santa Fe, New Mexico  
Regional Administrator, U.S. Environmental Protection Agency, Dallas, Texas



State of NM Energy, Inc.

505-827-5800

# CARLSBAD CURRENT-ARGUS

620 South Main • P.O. Box 1629

Carlsbad, New Mexico 88220

(505) 887-5501

OIL CONSERVATION DIVISION

CLASSIFIED ADVERTISING INVOICE

RECEIVED

START DATE 02/21/94 STOP DATE 02/21/94  
NO. INSERTIONS 1 NO. LINES 113  
CLASSIFICATION 100 AD NO. 100114

RETURN POSTAGE GUARANTEED

State of NM Energy, Inc.  
P O BOX 2088

SANTA FE  
NM 87504

AMOUNT DUE

IF PAID AFTER

\$ 44.25

02/21/94

YOUR AD READ:

FEBRUARY 4 1994 NO

PLEASE RETURN WITH YOUR REMITTANCE

ADNO: 100114

STOP DAY 02/21 100

02/21/94 44.25

Notice

First Notice

Thank You

No. 40259

said newspaper and not in supplement thereof on the date as follows, to wit:

FEBRUARY 21, 19 94

\_\_\_\_\_, 19 \_\_\_\_  
\_\_\_\_\_, 19 \_\_\_\_  
\_\_\_\_\_, 19 \_\_\_\_  
\_\_\_\_\_, 19 \_\_\_\_  
\_\_\_\_\_, 19 \_\_\_\_  
\_\_\_\_\_, 19 \_\_\_\_

That the cost of publication is \$ 44.25 and that payment thereof has been made and will be assessed as court costs.

*Amy McKay*

Subscribed and sworn to before me this

24 day of February, 19 94

*Edith L. Furr*

My commission expires 1/18/98

Notary Public

No 16352

by a spill, leak, or accidental discharge to the surface is at a depth of approximately 400 feet with a chlorides concentration of approximately 55 mg/l. The discharge plan addresses how spills, leaks and other accidental discharges to the surface will be managed, as well as disposal of waste oil and solid wastes.

Any interested person may obtain further information from the Oil Conservation Division and may submit written comments to the Director of the Oil Conservation Division at the address given above. The discharge plan application may be viewed at the above address between 8:00 a.m. and 4:00 p.m. Monday through Friday. Prior to ruling on any proposed discharge plan or its modification, the Director of the Oil Conservation Division shall allow at least thirty (30) days after the date of publication of this notice during which comments may be submitted to him and public hearing may be requested by any interested person. Requests for public hearing shall set forth the reasons why a hearing should be held. A hearing will be held if the Director determines there is significant public interest.

If no public hearing is held, the Director will approve or disapprove the proposed plan based on information available. If a public hearing is held, the director will approve or disapprove the proposed plan based on information in the plan and information submitted at the hearing.

GIVEN under the Seal of New Mexico Oil Conservation Commission at Santa Fe, New Mexico, on this 8th day of February, 1994.

STATE OF NEW MEXICO  
OIL CONSERVATION  
DIVISION

WILLIAM J. LEMAY,  
Director

Delaney, General Manager, 921 West Sanger, Hobbs, New Mexico, 88240, has submitted an application for a discharge plan for the Antelope Ridge Gas Processing Plant located in the SW/4, SE/4, Section 15, Township 23 South, Range 34 East, NMPM, Lea County, New Mexico. Approximately 2100 gallons per day of process waste water and natural gas liquids will be collected and trucked off-site to be separated, with the waste water to be disposed of in a UIC-permitted Class II disposal well. Groundwater most likely to be affected

# Affidavit of Publication

State of New Mexico,  
County of Eddy, ss.

Amy McKay  
being first duly sworn, on oath says:

That she is Business Manager  
of the Carlsbad Current-Argus, a newspaper published daily at the City of Carlsbad, in said county of Eddy, state of New Mexico and of general paid circulation in said county; that the same is a duly qualified newspaper under the laws of the state wherein legal notices and advertisements may be published; that the printed notice attached hereto was published in the regular and entire edition of said newspaper and not in supplement thereof on the date as follows, to wit:

FEBRUARY 21	19 94
_____	19 _____
_____	19 _____
_____	19 _____
_____	19 _____
_____	19 _____

That the cost of publication is \$ 44.25,  
and that payment thereof has been made and will be assessed as court costs.

Amy McKay  
Subscribed and sworn to before me this  
24 day of February, 19 94  
Edith L. Larm

My commission expires 1/18/98  
Notary Public

February 21, 1994

## NOTICE OF PUBLICATION

STATE OF NEW MEXICO  
ENERGY, MINERALS AND  
NATURAL RESOURCES  
DEPARTMENT OIL  
CONSERVATION DIVISION

Notice is hereby given that pursuant to New Mexico Water Quality Control Commission Regulations, the following discharge plan renewal application has been submitted to the Director of the Oil Conservation Division, State Land Office Building, P.O. Box 2088, Santa Fe, New Mexico 87504-2088, Telephone (505) 827-5800:

(GW-162)- Hadson Pipeline Companies, John R. Delaney, General Manager, 921 West Sanger, Hobbs, New Mexico, 88240, has submitted an application for a discharge plan for the Antelope Ridge Gas Processing Plant located in the SW/4, SE/4, Section 15, Township 23 South, Range 34 East, NMPM, Lea County, New Mexico. Approximately 2100 gallons per day of process waste water and natural gas liquids will be collected and trucked off-site to be separated, with the waste water to be disposed of in a UIC-permitted Class II disposal well. Groundwater most likely to be affected

by a spill, leak, or accidental discharge to the surface is at a depth of approximately 400 feet with a chlorides concentration of approximately 55 mg/l. The discharge plan addresses how spills, leaks, and other accidental discharges to the surface will be managed, as well as disposal of waste oil and solid wastes.

Any interested person may obtain further information from the Oil Conservation Division and may submit written comments to the Director of the Oil Conservation Division at the address given above. The discharge plan application may be viewed at the above address between 8:00 a.m. and 4:00 p.m., Monday through Friday. Prior to ruling on any proposed discharge plan or its modification, the Director of the Oil Conservation Division shall allow at least thirty (30) days after the date of publication of this notice during which comments may be submitted to him and public hearing may be requested by any interested person. Requests for public hearing shall set forth the reasons why a hearing should be held. A hearing will be held if the Director determines there is significant public interest.

If no public hearing is held, the Director will approve or disapprove the proposed plan based on information available. If a public hearing is held, the director will approve or disapprove the proposed plan based on information in the plan and information submitted at the hearing.

GIVEN under the Seal of New Mexico Oil Conservation Commission at Santa Fe, New Mexico, on this 8th day of February, 1994.

STATE OF NEW MEXICO  
OIL CONSERVATION  
DIVISION

WILLIAM J. LEMAY,  
Director

**NOTICE OF PUBLICATION**

**STATE OF NEW MEXICO  
ENERGY, MINERALS AND NATURAL RESOURCES DEPARTMENT  
OIL CONSERVATION DIVISION**

Notice is hereby given that pursuant to New Mexico Water Quality Control Commission Regulations, the following discharge plan renewal application has been submitted to the Director of the Oil Conservation Division, State Land Office Building, P.O. Box 2088, Santa Fe, New Mexico 87504-2088, Telephone (505) 827-5800:


**(GW-162) - Hadson Pipeline Companies, John R. Delaney, General Manager, 921 West Sanger, Hobbs, New Mexico, 88240, has submitted an application for a discharge plan for the Antelope Ridge Gas Processing Plant located in the SW/4, SE/4, Section 15, Township 23 South, Range 34 East, NMPM, Lea County, New Mexico. Approximately 2100 gallons per day of process waste water and natural gas liquids will be collected and trucked off-site to be separated, with the waste water to be disposed of in a UIC-permitted Class II disposal well. Groundwater most likely to be affected by a spill, leak, or accidental discharge to the surface is at a depth of approximately 400 feet with a chlorides concentration of approximately 55 mg/l. The discharge plan addresses how spills, leaks, and other accidental discharges to the surface will be managed, as well as disposal of waste oil and solid wastes.**

Any interested person may obtain further information from the Oil Conservation Division and may submit written comments to the Director of the Oil Conservation Division at the address given above. The discharge plan application may be viewed at the above address between 8:00 a.m. and 4:00 p.m., Monday through Friday. Prior to ruling on any proposed discharge plan or its modification, the Director of the Oil Conservation Division shall allow at least thirty (30) days after the date of publication of this notice during which comments may be submitted to him and public hearing may be requested by any interested person. Requests for public hearing shall set forth the reasons why a hearing should be held. A hearing will be held if the Director determines there is significant public interest.

If no public hearing is held, the Director will approve or disapprove the proposed plan based on information available. If a public hearing is held, the director will approve or disapprove the proposed plan based on information in the plan and information submitted at the hearing.

GIVEN under the Seal of New Mexico Oil Conservation Commission at Santa Fe, New Mexico, on this 8th day of February, 1994.

STATE OF NEW MEXICO  
OIL CONSERVATION DIVISION

  
WILLIAM J. LEMAY, Director

S E A L

FILE COPY

Material Safety Data Sheet  
Hill 300 Solvent  
*Mineral Spirits*

JOHNSON Bros. OIL CO.  
701 WEST 1st St., Odessa, Texas 79761

HILL PETROLEUM COMPANY  
P.O. BOX 5038  
HOUSTON, TEXAS 77262

PHIBRO ENERGY COMPANY  
600 STEAMBOAT ROAD  
GREENWICH, CONNECTICUT 06830

Emergency Phone Numbers  
24 Hour Emergency 713-923-6641  
Chemtrec Emergency 800-424-9300

General Assistance  
Medical Assistance 713-651-0870  
General Assistance 713-921-8301

## I. GENERAL INFORMATION

Trade Name	CAS Registry Number
Hill 300 Solvent	64742-82-1
Chemical Family	DOT Proper Shipping Name
Paraffinic, Naphthenic and Aromatic Hydrocarbons	Petroleum Naphtha
Synonyms	DOT Hazard Class
Stoddard Solvent, Mineral Spirits, Old Style 300	Combustible Liquid
	DOT Identification Number
	UN 1255

## II. SUMMARY OF HAZARDS

May cause irritation to eyes, skin and respiratory system. Avoid liquid, mist and vapor contact. Harmful or fatal if swallowed. Aspiration hazard, can enter lungs and cause damage. May cause irritation or be harmful if inhaled or absorbed through the skin. Combustible Liquid. Vapors may explode.

## III. HAZARDOUS INGREDIENTS

Hill 300 Solvent is a complex mixture containing 60-80% paraffins, 10-15 naphthenes, 10-18% C9 and C10 aromatics, and less than 2% olefins.

Component	CAS No.	Concentration (%)
n-Nonane	111-84-2	1 - 4 %
Octane	111-65-9	<1 - 2 %
1,2,4 Trimethyl Benzene	95-63-6	2 - 6 %

## IV. PHYSICAL DATA

<u>Boiling Point:</u> 310°-400° F	<u>Specific Gravity:</u> 0.79 @ 60° F
<u>Melting Point:</u> not applicable	<u>Vapor Pressure:</u> 0.1 psi @ 100° F
<u>Vapor Density (air=1):</u> 4.9	<u>Percent Volatile:</u> essentially 100%
<u>Solubility in Water:</u> Negligible	
<u>Appearance and Odor:</u> Water white to straw colored with mild hydrocarbon odor	

## V. FIRE AND EXPLOSION HAZARD DATA

<u>Flash Point:</u> 110° F	<u>Autoignition Temperature:</u> >400° F
<u>Flammability Limits in Air</u>	
Lower Explosive Limit: 1.1%	Upper Explosive Limit: 6.0%

Page 1

Y709 3.11

V. FIRE AND EXPLOSION HAZARD DATA (cont'd)

NEPA Classification

Health: Slightly Hazardous (1)  
Reactivity: Stable (0)

Fire: Moderate (2)  
Specific Hazard: not applicable

Basic Firefighting Procedures

Combustible Liquid. Use dry chemical, foam or carbon dioxide to extinguish the fire. Consult foam manufacturer for appropriate media, application rates and water/foam ratio. Water can be used to cool fire-exposed containers, structures and to protect personnel. If a leak or spill has not ignited, ventilate area and use water spray to disperse gas or vapor and to protect personnel attempting to stop a leak. Use water to flush spills away from sources of ignition. Do not flush down public sewers.

Unusual Fire and Explosion Hazards

Dangerous when exposed to heat or flame. Vapors form flammable or explosive mixtures with air at room temperature. Vapor or gas may spread to distant ignition sources (pilot lights, welding equipment, electrical equipment, etc.) and flash back. Vapors may accumulate in low areas. Vapors may concentrate in confined areas. Flowing product can be ignited by self generated static electricity. Use adequate grounding to prevent static buildup. Runoff to sewer may cause fire or explosion hazard. Containers may explode in heat of fire. Irritating or toxic substances may be emitted upon thermal decomposition. For fires involving this material, do not enter any enclosed or confined space without proper protective equipment, which may include NIOSH approved self-contained breathing apparatus with full face mask. Clothing, rags or similar organic material contaminated with this product and stored in a closed space may undergo spontaneous combustion. Transfer to and from commonly grounded containers.

VI. REACTIVITY INFORMATION

Stability: Stable under normal conditions of use

Incompatibility: Avoid strong oxidizing agents (peroxide, permanganate, dichromate, chlorine, etc.), strong acids, caustics and halogens.

Hazardous Polymerization: Will not occur

Hazardous Reactions/Decomposition Products: Combustion may produce carbon monoxide, carbon dioxide and reactive hydrocarbons (aldehydes, aromatics, etc.)

Conditions to Avoid: Heat, sparks, open flame, static electricity or any other potential ignition sources should be avoided. Prevent vapor accumulation. Do not switch load.

VII. HEALTH HAZARD INFORMATION

Product Listed as a Carcinogen or Potential Carcinogen by:

NTP - No IARC - No OSHA - No Other - No

Target Organs: Respiratory system, skin

Primary Routes of Entry: Inhalation, ingestion, dermal or eye contact

Occupational Exposure Limits

Compound	Source	Year	Adopted Value for Time Period
Mineral Spirits	OSHA-PEL	1989	TWA 100 ppm 8 hour
(Stoddard Solvent)	ACGIH-TLV	1989	TWA 100 ppm 8 hour

Material Safety Data Sheet  
Hill 300 Solvent

VII. HEALTH HAZARD INFORMATION (cont'd)

Occupational Exposure Limits (cont'd)

Compound	Source	Year	Adopted Value for Time Period		
Mineral Spirits (Stoddard Solvent)	NIOSH-REL	1989	TWA	350 mg/m <sup>3</sup>	8 hour
	NIOSH-REL	1989	CL	1800 mg/m <sup>3</sup>	15 min
Nonane	OSHA-PEL	1989	TWA	200 ppm	8 hour
	ACGIH-TLV	1989	TWA	200 ppm	8 hour
Octane	OSHA-PEL	1989	TWA	300 ppm	8 hour
	ACGIH-TLV	1989	TWA	300 ppm	8 hour
	NIOSH-REL	1989	TWA	75 ppm	8 hour
	OSHA-PEL	1989	STEL	375 ppm	15 min
	ACGIH-TLV	1989	STEL	375 ppm	15 min
	NIOSH-REL	1989	CL	385 ppm	15 min
Trimethyl Benzene	OSHA-PEL	1989	TWA	25 ppm	8 hour
	ACGIH-TLV	1989	TWA	25 ppm	8 hour
	NIOSH-REL	1989	TWA	100 ppm	8 hour
	OSHA-PEL	1989	STEL	150 ppm	15 min
	ACGIH-TLV	1989	STEL	150 ppm	15 min
	NIOSH-REL	1989	CL	200 ppm	10 min

Effects and Hazards of Eye Contact

May cause severe irritation, redness, tearing, blurred vision and conjunctivitis.

Effects and Hazards of Skin Contact

Prolonged or repeated contact may cause moderate irritation, defatting (cracking), redness, itching, inflammation, dermatitis and possible secondary infection. High pressure skin injections are SERIOUS MEDICAL EMERGENCIES.

Injury may not appear serious at first. Within a few hours, tissues will become swollen, discolored and extremely painful. See Notes to Physician section.

Effects and Hazards of Inhalation

Nasal and respiratory tract irritation, central nervous system effects including excitation, euphoria, contracted eye pupils, dizziness, drowsiness, blurred vision, fatigue, nausea, headache, loss of reflexes, tremors, convulsions, seizures, loss of consciousness, coma, respiratory arrest and sudden death could occur as a result of long term and/or high concentration exposure to vapors. May also cause anemia and irregular heart rhythm. Repeated or prolonged exposure may cause behavioral changes.

Effects and Hazards of Ingestion

This product may be harmful or fatal if swallowed. This product may cause nausea, vomiting, diarrhea and restlessness. DO NOT INDUCE VOMITING. Aspiration into the lungs can cause severe chemical pneumonitis or pulmonary edema/hemorrhage, which can be fatal. May cause gastrointestinal disturbances. Symptoms may include irritation, depression, vomiting and diarrhea. May cause harmful central nervous system effects, similar to those listed under "inhalation".

Medical Conditions Aggravated by Exposure

Preexisting eye, skin, heart, central nervous system and respiratory disorders may be aggravated by exposure to this product.

Toxicological Information

C9 AROMATICS produced toxicity in both the mothers and their fetuses when the

VII. HEALTH HAZARD INFORMATION (cont'd)

Toxicological Information (cont'd)

laboratory animals were exposed to significant concentrations of C9 aromatics throughout pregnancy.

MINERAL SPIRITS (Stoddard Solvent) can affect the body if it is inhaled, comes in contact with the eyes or skin, or is swallowed. The vapor is a mild narcotic and a mucous membrane irritant. Since it contains aliphatic and aromatic hydrocarbons in varying concentrations, toxicologic opinion is based upon deductions as to the relative health hazard of the different fractions. The vapor of the aliphatic fractions is chiefly nonane and isodecane, the aromatic component is considered more toxic. Stoddard solvent has an odor threshold of about 1 ppm and olfactory fatigue has been observed in about 6 minutes at low concentrations. Eye irritation was reported in a test exposure of human subjects at 150 ppm. Industrial exposures to unknown but fairly high concentrations over long periods have resulted in headaches, eye, nose and throat irritation, fatigue, marrow hypoplasia, and in extreme cases, death. Dermal exposures to the liquid solvent have caused dermatitis and jaundice.

NONANE causes a four hour LC<sub>50</sub> in rats at concentrations of 3200 ppm, or at about the same level as VM&P Naphtha. This level is markedly lower than the lethal concentrations reported in earlier mice studies involving octane (13,500 ppm) and heptane (16,000 ppm), supporting the lower limit for nonane.

OCTANE can affect the body if it is inhaled, comes in contact with the skin or eyes or is swallowed. Octane vapor is a mild narcotic and mucous membrane irritant. Concentrations of 6600 to 13,700 ppm produced narcosis in mice in 30 to 90 minutes, the fatal concentration for animals is near 13,500 ppm. No chronic systemic effects have been reported in humans.

TRIMETHYL BENZENE (pseudocumene, mesitylene and hemimellitene) can affect the body if it is inhaled, comes in contact with the eyes or skin or it is swallowed. It may also enter the body through the skin. The liquid is a primary skin irritant, but systemic intoxication due to absorption through the skin is not probable. High concentrations of vapors (5000 to 9000 ppm) caused central nervous system depression. Trimethyl benzene may cause nervousness, tension, anxiety, and asthmatic bronchitis. In addition, the peripheral blood showed a tendency to hypochromic anemia and a deviation from the normal in the coagulability of the blood.

VIII. EMERGENCY AND FIRST AID INFORMATION

Treatment for Eye Contact

Flush immediately with large amounts of water for at least 15 minutes. Eyelids should be held away from the eyeball to ensure thorough rinsing. Seek medical advice if pain or redness continues.

Treatment for Skin Contact

Wash exposed area thoroughly with soap and water. Remove contaminated clothing promptly and launder before reuse. Contaminated leather goods should be discarded. If irritation persists or symptoms described in the MSDS develop, seek medical attention. High pressure skin injections are SERIOUS MEDICAL

Material Safety Data Sheet  
Hill 300 Solvent

VIII. EMERGENCY AND FIRST AID INFORMATION (cont'd)

Treatment for Skin Contact (cont'd)

EMERGENCIES. Get immediate medical attention.

Treatment for Inhalation

Remove to fresh air. If breathing is difficult, ensure clear airway and administer oxygen. If not breathing, apply artificial respiration or cardiopulmonary resuscitation. Keep person warm, quiet and get medical attention.

Treatment for Ingestion

Never give anything by mouth to an unconscious person. DO NOT induce vomiting. Aspiration of material into the lungs due to vomiting can cause chemical pneumonitis which can be fatal. Give vegetable oil or charcoal slurry to retard absorption. If spontaneous vomiting occurs, keep head below hips to prevent aspiration of liquid into lungs and monitor for breathing difficulty. SEEK IMMEDIATE MEDICAL ATTENTION. Keep person warm and quiet.

Notes to Physician

In case of ingestion, gastric lavage with activated charcoal can be used promptly to prevent absorption. Consideration should be given to the use of an intratracheal tube, to prevent aspiration. Irregular heart beat may occur, use of adrenalin is not advisable. Individuals intoxicated by the product should be hospitalized immediately, with acute and continuing attention to neurological and cardiopulmonary function. Positive pressure ventilation may be necessary. After the initial episode, individuals should be followed for changes in blood variables and the delayed appearance of pulmonary edema and chemical pneumonitis. Such patients should be followed for several days or weeks for delayed effects, including bone marrow toxicity, hepatic and renal impairment. Individuals with chronic pulmonary disease will be more seriously impaired, and recovery from inhalation exposure may be complicated. In case of skin injection, prompt debridement of the wound is necessary to minimize necrosis and tissue loss.

IX. PRECAUTIONARY MEASURES

Respiratory Protection

If workplace exposure limits for product or components are exceeded, NIOSH equipment should be worn. Proper respirator selection should be determined by adequately trained personnel, based on the contaminants, the degree of potential exposure and published respiratory protection factors. This equipment should be available for nonroutine and emergency use.

Eye Protection

Keep away from eyes. Eye contact can be avoided by wearing safety glasses or chemical splash goggles. Do not wear contact lenses when working around this product.

Skin Protection

Keep away from skin. Skin contact can be minimized by wearing protective gloves such as neoprene, nitrile-butadiene rubber, etc. and, where necessary, impervious clothing and boots. Leather goods contaminated with this product should be discarded. A source of clean water should be available in the work area for flushing eyes and skin.

Ventilation

Avoid breathing mists and vapor. Use in well ventilated area. In confined space, mechanical ventilation may be necessary to reduce vapor concentrations to



Material Safety Data Sheet  
Hill 300 Solvent

IX. PRECAUTIONARY MEASURES (cont'd)

Ventilation (cont'd)

levels below the allowable exposure limits.

Other Precautionary Measures

Tanks, vessels or other confined spaces which have contained product should be freed of vapors before entering. The container should be checked with an explosimeter for safety and an oxygen meter to ensure a safe breathing atmosphere before entry. Empty containers may contain toxic, flammable/combustible or explosive residues or vapors. Do not cut, grind, drill, weld or reuse empty containers that contained this product. Do not transfer this product to another container unless the container receiving the product is labeled with proper DOT shipping name, hazard class and other information that describes the product and its hazards.

Precautions to be Taken in Handling and Storing

Store in tightly closed containers in cool, dry, isolated and well ventilated area away from heat, sources of ignition and incompatible materials. Use non-sparking tools and explosion proof equipment. Ground lines, containers, and other equipment used during product transfer to reduce the possibility of a static induced spark. Do not "switch" load (load into containers which previously contained gasoline or other low flash material) because of possible accumulation of a static charge resulting in a source of ignition.

Use good personal hygiene practices. After handling this product, wash hands before eating, drinking, smoking or using toilet facilities.

X. SPILL AND LEAK PROCEDURES

Precautions in Case of a Spill or Release

If facility or operation has an "oil or hazardous substance contingency plan", activate its procedures. Stay upwind and away from spill. Wear appropriate protective equipment including respiratory protection as conditions warrant. Do not enter or stay in area unless monitoring indicates that it is safe to do so. Isolate hazard area and restrict entry to emergency crew. Combustible Liquid. Review Fire and Explosion Hazard Data before proceeding with clean up. Keep all sources of ignition (flames, smoking, flares, etc.) and hot surfaces away from release. Contain spill in smallest possible area. Recover as much product as possible (e.g., by vacuuming). Stop leak if it can be done without risk. Use water spray to disperse vapors. Spilled material may be absorbed by an appropriate absorbent, and then handled in accordance with environmental regulations. Prevent spilled material from entering sewers, storm drains, other unauthorized treatment/drainage systems and natural waterways. Contact fire authorities and appropriate federal, state and local agencies. If spill of any amount is made into or upon navigable waters, the contiguous zone, or adjoining shorelines, contact the National Response Center at 800-424-8802. For highway or railway spills, contact Chemtrec at 800-424-9300.

Waste Disposal Method

Dispose of material in accordance with local, county, state and federal regulations. Contact state and federal regulators to determine whether the material should be classified as a hazardous waste or industrial waste and handled accordingly. Use licensed transporter and disposal facility.

XI. SARA TITLE III INFORMATION

Section 302/304 Extremely Hazardous Substances

None

Section 311 Hazard Category

Acute	Chronic	Fire	Pressure	Reactive	Not Applicable
-------	---------	------	----------	----------	----------------

X	X	X			
---	---	---	--	--	--

Section 313 Toxic Chemicals

1,2,4 Trimethylbenzene

6 % Maximum

XII. LABELING INFORMATION

May cause irritation to eyes, skin and respiratory system. Avoid liquid, mist and vapor contact. Harmful or fatal if swallowed. Aspiration hazard, can enter lungs and cause damage. May cause irritation or be harmful if inhaled or absorbed through the skin. Combustible Liquid. Vapors may explode.

If swallowed, do not induce vomiting, aspiration hazard. Call physician immediately. In case of contact, immediately flush eyes with plenty of water for at least 15 minutes. Wash skin with soap and plenty of water. Product soaked clothing should be removed and laundered before reuse. Read Emergency and First Aid Information section of the MSDS.

Use only in well ventilated locations. Keep away from heat, spark and flames. In case of fire, use water spray, foam, dry chemical or carbon dioxide as described in the Fire and Explosion Hazard Data section of the MSDS. Do not pressurize, cut, weld, braze, solder, drill on or near this container. "Empty" container contains residue (liquid and/or vapor) and may explode in heat of a fire.

For industrial use only. Keep out of reach of children. Failure to use caution may cause serious injury or illness. Never siphon by mouth.

DISCLAIMER

The information, recommendations and suggestions herein were compiled from reference material and other sources believed to be reliable. However, the MSDS's accuracy or completeness is not guaranteed by Phibro Energy, Inc. or its affiliates, nor is any responsibility assumed or implied for any loss or damage resulting from inaccuracies or omissions. Since conditions of use are beyond our control, no warranties of merchantability or fitness for a particular purpose are expressed or implied. This MSDS is not intended as a license to operate under, or recommendation to infringe on, any patents. Appropriate warnings and safe handling procedures should be provided to handlers and users.

Prepared By:  
Sue Bottom  
Corporate Manager,  
Environmental Affairs & Safety



STATE OF NEW MEXICO  
ENERGY, MINERALS AND NATURAL RESOURCES DEPARTMENT

OIL CONSERVATION DIVISION



BRUCE KING  
GOVERNOR

ANITA LOCKWOOD  
CABINET SECRETARY

POST OFFICE BOX 2088  
STATE LAND OFFICE BUILDING  
SANTA FE, NEW MEXICO 87504  
(505) 827-5800

January 25, 1994

**CERTIFIED MAIL**  
**RETURN RECEIPT NO. P-176-012-056**

Mr. John R. Delaney  
General Manager  
Hadson Pipeline Companies  
921 West Sanger  
Hobbs, NM 88240

**RE: Discharge Plan GW-162 Antelope Ridge Gas Plant**

Dear Mr. Delaney,

On July 15, 1993 the New Mexico Oil Conservation Division (OCD) notified you that an approved discharge plan would be required for the start-up and operation of the Antelope Ridge Gas Plant located in the SW/4 SE/4 of Section 15, Township 23 South, Range 34 East, NMPM, Lea County, New Mexico. A discharge plan was received by the OCD on January 21, 1994. The following comments and requests for additional information are based on the review of the application for discharge plan GW-162 and observations made during the September 28, 1993 OCD inspection of the facility:

- What is the facility's gas processing capacity?
- Supply the OCD with the design of the secondary containment system used for the process skid and the compressor skid sumps.
- For discharge plan approval, the OCD requires a comprehensive analysis of the final wastewater effluent, prior to disposal.
- Sections VII and VIII of the discharge plan application seem to state that used engine oil, as well as other liquid hydrocarbon wastes, are commingled with the produced water and waste water in storage tanks until disposed of offsite by an

Mr. John R. Delaney  
January 25, 1994  
Page 2

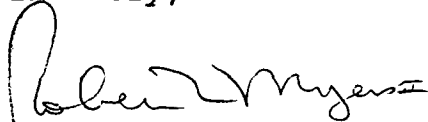
OCD-approved disposal company. Used engine oils are not permitted to be injected into OCD-approved Class II wells. Submit an alternative disposal method for these wastes.

- Are there any domestic wastes produced at this site, and if so, how are they disposed of?
- How are solid wastes managed, including office trash and used oil filters?
- Submit a list of all chemicals used at this facility, including those used for gas processing, engine maintenance and cleaning.
- OCD requires that underground drain lines be tested once every five years. Submit a proposed method and schedule for the positive pressure testing of all underground lines.
- Only one copy of the discharge plan renewal application was received by the OCD Santa Fe office. Submit two additional copies, with the above requested information, plus a third copy of the requested information.

Submittal of the requested information and commitments in a timely fashion will expedite the final review of the application and approval of the discharge plan renewal.

If you have any questions, please contact me at (505) 827-4080.

Sincerely,



Robert L. Myers II  
Petroleum Engineer Specialist

RLM/rlm

xc: OCD Hobbs Office

ACKNOWLEDGEMENT OF RECEIPT  
OF CHECK/CASH

I hereby acknowledge receipt of check No. [REDACTED] dated 1/19/94,  
or cash received on Jan. 24, 1994 in the amount of \$ 50.00  
from Llano, Inc.

for Antelope Ridge Gas Plant GW-162  
(Facility Name) (DP No.)

Submitted by: \_\_\_\_\_ Date: \_\_\_\_\_

Submitted to ASD by: Kathy Brown Date: 1/24/94

Received in ASD by: A. Alire Date: 1/24/94

Filing Fee X New Facility \_\_\_\_\_ Renewal \_\_\_\_\_  
Modification \_\_\_\_\_ Other \_\_\_\_\_  
(specify)

Organization Code 521.07 Applicable FY 94

To be deposited in the Water Quality Management Fund.

Full Payment \_\_\_\_\_ or Annual Increment \_\_\_\_\_

LLANO, INC.

BOX 1320  
HOBBS, NEW MEXICO 88240

SUNWEST BANK OF HOBBS, N.A.  
HOBBS, NEW MEXICO 88240

95-321  
1122

CHECK DATE CHECK NO.

01/19/94

CHECK AMOUNT

\$50.00

PAY TO THE ORDER OF

THE STATE OF NEW MEXICO  
OIL CONSERVATION DIVISION  
P O BOX 2088  
SANTA FE, NEW MEXICO 87501

LLANO, INC. - GENERAL ACCOUNT

VOID AFTER 90 DAYS

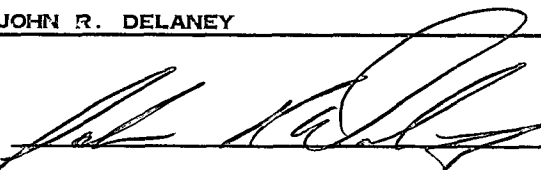
OIL CONSERVATION DIVISION  
RECEIVEDState of New Mexico  
Energy, Minerals and Natural Resources Department  
OIL CONSERVATION DIVISION  
P.O. Box 2088  
Santa Fe, NM 87501

94 JAN 21 AM 8 42

**DISCHARGE PLAN APPLICATION FOR NATURAL GAS PROCESSING PLANTS,  
OIL REFINERIES AND GAS COMPRESSOR STATIONS***(Refer to OCD Guidelines for assistance in completing the application.)*

- I. TYPE: NATURAL GAS PROCESSING AND COMPRESSION
- II. OPERATOR: HADSON PIPELINE COMPANIES  
ADDRESS: 921 WEST SANGER HOBBS, NEW MEXICO 88240  
CONTACT PERSON: JOHN R. DELANEY PHONE: 393-2153
- III. LOCATION: SW/4 SE/4 Section 15 Township 23 S Range 34 E  
Submit large scale topographic map showing exact location.
- IV. Attach the name and address of the landowner(s) of the disposal facility site.
- V. Attach description of the facility with a diagram indicating location of fences, pits, dikes, and tanks on the facility.
- VI. Attach a description of sources, quantities and quality of effluent and waste solids.
- VII. Attach a description of current liquid and solid waste transfer and storage procedures.
- VIII. Attach a description of current liquid and solid waste disposal procedures.
- IX. Attach a routine inspection and maintenance plan to ensure permit compliance.
- X. Attach a contingency plan for reporting and clean-up of spills or releases.
- XI. Attach geological/hydrological evidence demonstrating that disposal of oil field wastes will not adversely impact fresh water. Depth to and quality of ground water must be included.
- XII. Attach such other information as is necessary to demonstrate compliance with any other OCD rules, regulations and/or orders.
- XIII. CERTIFICATION

I hereby certify that the information submitted with this application is true and correct to the best of my knowledge and belief.

Name: JOHN R. DELANEYTitle: GENERAL MANAGERSignature: Date: JANUARY 19, 1994

DISTRIBUTION: Original and one copy to Santa Fe with one copy to appropriate Division District Office.

I.

The major purpose of this facility, The Antelope Ridge Gas Plant, is the processing of natural gas.

We will be taking gas into the plant from our pipeline. The gas will then be compressed to a higher pressure in preparing for the processing. The gas will then be processed by cryogenics.

After processing, the clean dry, natural gas will be sold. It will be compressed to a sufficient pressure to be sold into a pipeline.

The NGL resulting from the processing, will be sold into an NGL pipeline.

II.

The Owner/Operator of the facility will be:  
Hadson Pipeline Companies (505) 393-2153  
921 W. Sanger  
Hobbs, New Mexico 88240

Mr. J. R. Delaney (505) 393-2153  
Manager; Operations  
921 W. Sanger  
Hobbs, New Mexico 88240

The name of this facility is "The Antelope Ridge Gas Plant."



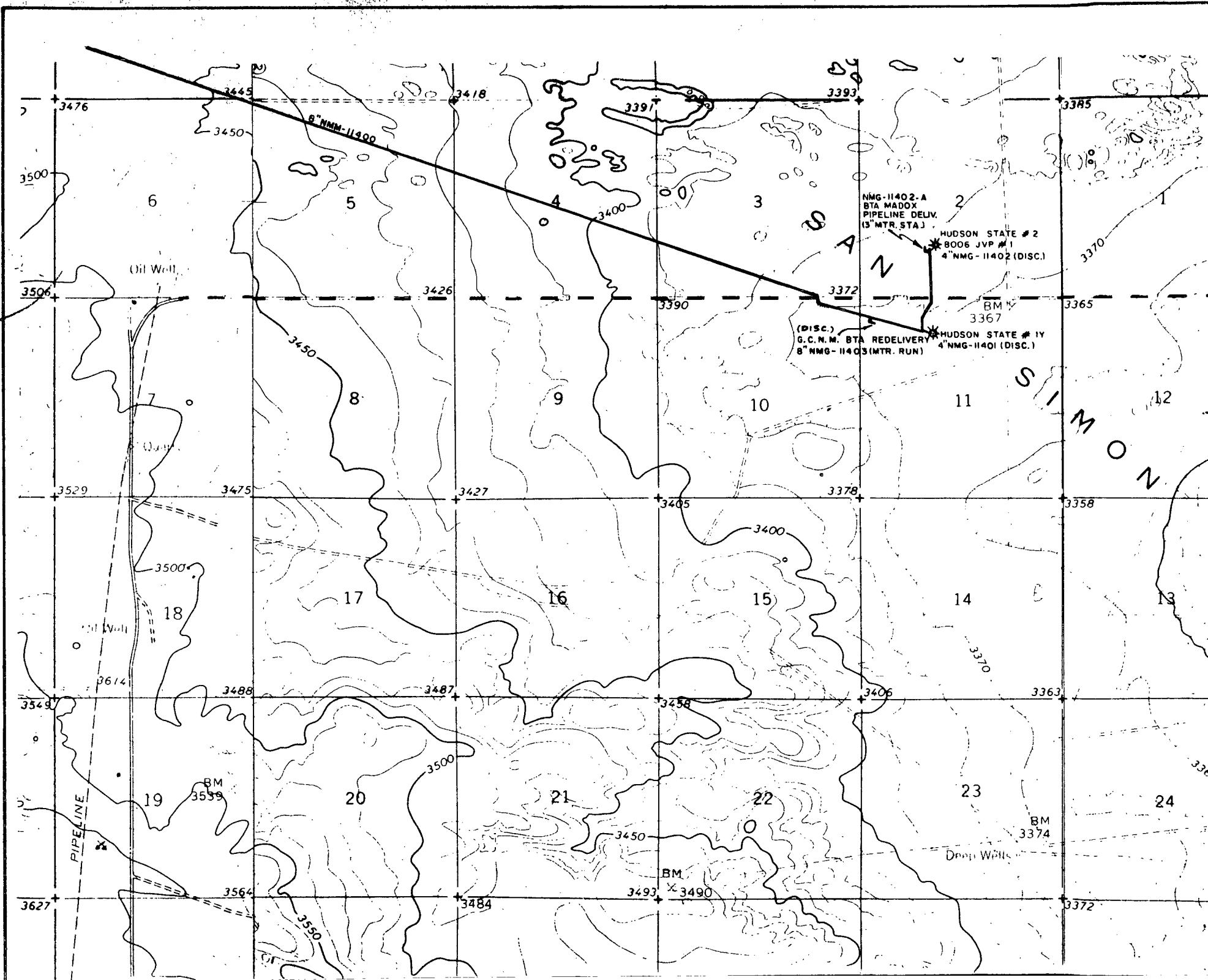
III.

Location: SW/4, of SE/4, Section 15, Township 23 S,  
Range 34 E, NMPM, LEA County,  
New Mexico:

A tract of land located in the Southeast Quarter of  
Section 15, Township 23 South, Range 34 East, N.M.P.M., Lea  
County, New Mexico, and being more particularly described as  
follows:

Beginning at a point which lies N.  $70^{\circ}16'W.$ , a distance  
of 1366.73 feet from the Southeast corner of said Section  
15; thence N.  $51^{\circ}42'48"W.$ , a distance of 470.03 feet; thence  
N.  $38^{\circ}16'45"E.$ , a distance of 315.02 feet; thence S.  $52^{\circ}$   
 $02'30"E.$ , a distance of 321.53 feet; thence S.  $13^{\circ}$   
 $10'09"W.$ , a distance of 349.97 feet to the point of beginning  
containing 2.87 acres, more or less. SW  $1/4$  SE  $1/4$  - 2.15  
ACRES AND SE  $1/4$  SE  $1/4$  - 0.72 ACRES.

Attached please find a copy of the topographic map  
showing the location of the compressor station, along with a  
copy of the original survey plat of the described location.

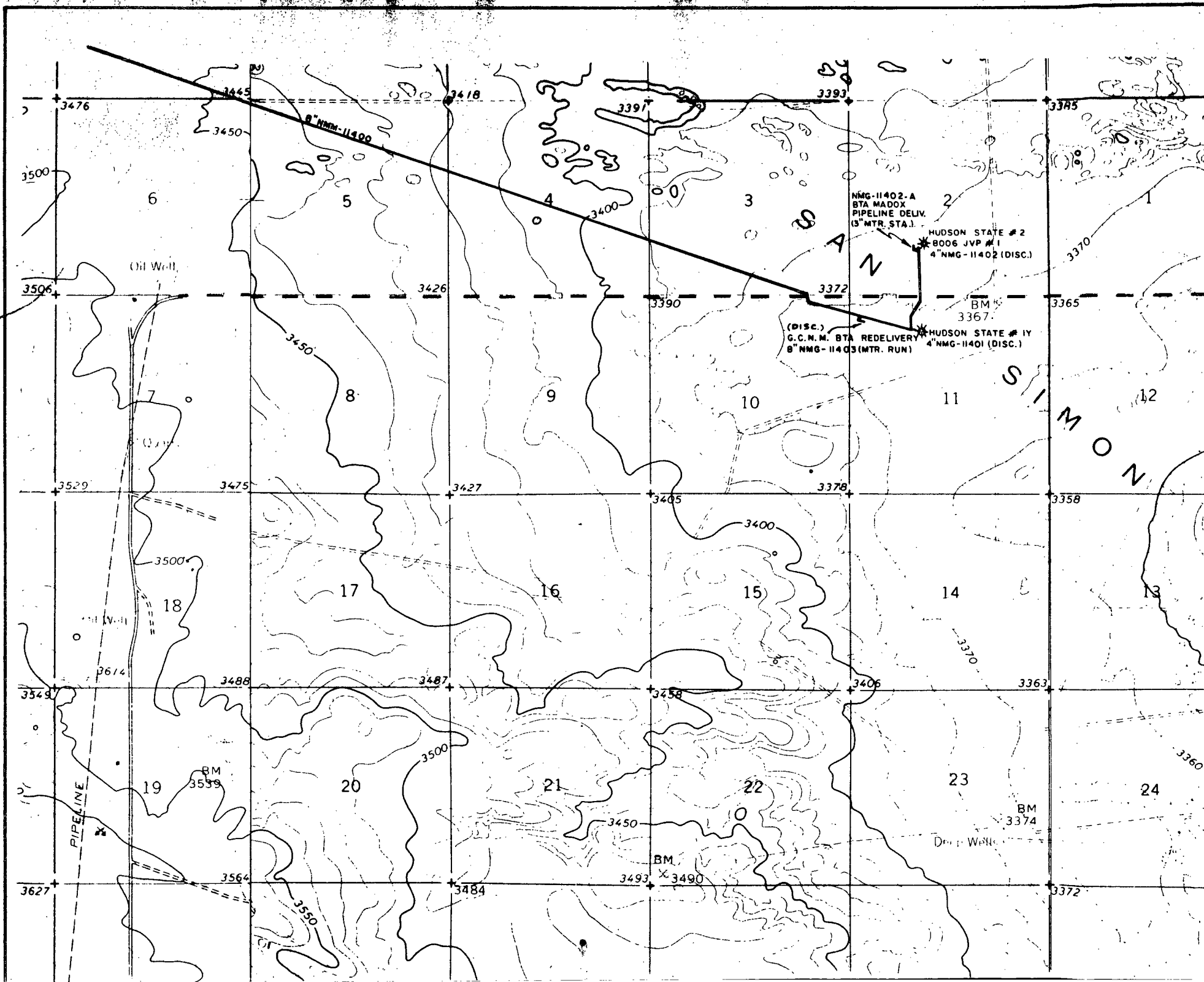


IV.

The land owner of the facility site is:

State of New Mexico  
Commissioner of Public Lands  
P. O. Box 1148  
Santa Fe, New Mexico 87504-1148

Dep. Comm. Bob Laxingcamp  
(505) 827 - 5760



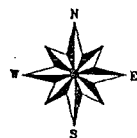
## V. Facility Description

This facility consist of an inlet compressor, inlet dehydrators, gas processing skids, an interstage compressor, and an outlet compressor. There are two steel tanks with steel tops, one is a 550 bbl., and the other is a 210 bbl. tank.

The total compression Horse Power of this facility is 4,196 H.P.

The gas enters the plant from the north, and is processed. The liquid product, N G L, is pumped out of the plant via a sales line which heads in an eastwardly direction. The residue natural gas leaves the plant on the south side of the facility.

Please refer to the attached diagram of the facility for more detailed information.



N.3+00'-0"

N.2+00'-0"

N.1+00'-0"

N.0+00'-0"

OVERHEAD ELECTRIC LINE

POWER POLE

ELECTRIC PANEL

OFFICE & SHOP AREA

RADIO ANTENNA

E.1+00'-0"

321.53'

E.2+00'-0"

E.3+00'-0"

E.4+00'-0"

E.5+00'-0"

N.3+00'-0"

N.2+00'-0"

N.1+00'-0"

N.0+00'-0"

Force

470.03'

TOTAL COMPRESSION H.P. = 4,196

NO.	REVISION	BY	DATE
△			
△			
△			
△			
△			

# Antelope Ridge Gas Pl

PLOT PLAN - SAN1363A

JOHN WEST ENGINEERING CO.  
CONSULTANTS

HOBBBS	NEW ME
DATE REVISION	DATE REVISION
DATE REVISION	DATE REVISION
DATE REVISION	DATE REVISION

E-23

VI. Sources, Quantities, & Quality of Effluent & Waste Solids

- 1) ENGINE COOLING WATER - The engines driving the compressors contains approximately 330 gallons of a 50% antifreeze, 50% water mixture, each, for cooling purposes. This is a closed loop system and normally requires no make-up.
- 2) SEPARATORS - The inlet separator, filter separator, and scrubbers (located on the compressor skid and dehydration unit) remove an estimated 7 to 13 BBL/day of water and an estimated 0 to 36 BBL/day of hydrocarbon liquids depending upon ambient conditions.
- 3) WASTE LUBRICATION OILS - The compressors contains approximately 85 gallons of lubricating oil and the engine contains approximately 100 gallons of lubrication oil each. The lubrication oil is a standard 30 or 40 weight oil and replaced approximately every 5000 hours of run time, or as required by oil analysis.
- 4) DEHYDRATION UNIT - The dehydration unit contains approximately 200 gallons of triethylene glycol which is continually circulated in order to dry the gas. The water vapor is vented to the atmosphere and contains no BTEX.

The waste water and hydrocarbon liquids will be commingled within the facility. Individual rates, volumes and concentrations should not vary beyond the ranges identified above. All process units will be self-contained to prevent intentional or inadvertent discharges and spills.



## Laboratory Services, Inc.

1331 Tasker Drive  
Hobbs, New Mexico 88240

Telephone: (505) 397-3713

FOR: Llano, Inc.  
Attention: Mr. Phil Elliott  
921 W. Sanger  
Hobbs, New Mexico 88240

SAMPLE  
IDENTIFICATION: Plant Inlet Gas  
COMPANY: Llano, Inc.  
LEASE:  
PLANT: Antelope Ridge

SAMPLE DATA: DATE SAMPLED: 1/1/94 2:20PM  
ANALYSIS DATE: 01-01-94  
PRESSURE - PSIG 755.00  
SAMPLE TEMP. °F  
ATMOS. TEMP. °F 60.00

GAS (XX) LIQUID ( )  
SAMPLED BY: Rolland Perry  
ANALYSIS BY: Rolland Perry

REMARKS:

## COMPONENT ANALYSIS

COMPONENT	MOL PERCENT	GPM
Hydrogen Sulfide (H2S)		
Nitrogen (N2)	2.55	
Carbon Dioxide (CO2)	0.20	
Methane (C1)	75.00	
Ethane (C2)	11.87	3.156
Propane (C3)	7.08	1.942
I-Butane (IC4)	0.78	0.254
N-Butane (NC4)	1.85	0.581
I-Pentane (IC5)	0.32	0.115
N-Pentane (NC5)	0.24	0.086
Hexane (C6)	0.11	0.048
Heptanes Plus (C7+)	0.00	0.000
	100.00	6.182
BTU/CU.FT. - DRY	1259	MOLECULAR WT. 21.5508
AT 14.650 DRY	1255	
AT 14.650 WET	1233	26# GASOLINE - 0.443
AT 15.025 DRY	1287	
AT 15.025 WET	1265	
AT 14.73 WET		
SPECIFIC GRAVITY -		
CALCULATED	0.744	
MEASURED		



## VII. TRANSFER & STORAGE OF PROCESS FLUIDS & EFFLUENTS

Waste water and hydrocarbon liquids are collected in the inlet compressor scrubber, and the dehydrator. The waste water and hydrocarbon liquids are commingled and piped to closed storage tanks. ( See attached facility schematic).

The inlet compressor scrubber, and dehydrator are each pressurized. The closed storage tanks will be maintained and checked on a daily bases.

The closed storage tanks are standard API 210, and 550 Barrel tanks. The tank are be constructed above ground level with an earthen dike enclosure to provide secondary containment equal to one-third greater than the tank capacity.

Waste lubrication oil and foundation drains are piped to sump tanks with safety containment. The waste oils and liquids from the floor drains are then transferred to the closed tanks. The drain system has atmospheric pressure only until liquid is "dumped" to the closed storage tanks.



N.3+00'-0"

N.2+00'-0"

N.1+00'-0"

N.0+00'-0"

OVERHEAD ELECTRIC LINE

POWER POLE

ELECTRIC PANEL

OFFICE & SHOP AREA

RADIO ANTENNA



321.53'

E.2+00'-0"

E.3+00'-0"

E.4+00'-0"

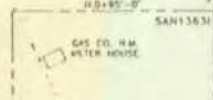
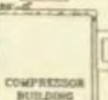
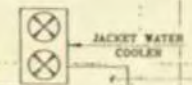
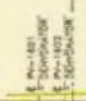
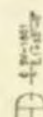
E.5+00'-0"

N.3+00'-0"

N.2+00'-0"

N.1+00'-0"

N.0+00'-0"



470.03'

NO.	REVISION	BY	DATE
1			
2			
3			
4			
5			
6			

# Antelope Ridge Gas

PLOT PLAN - SAN1363A

JOHN WEST ENGINEERING CO.

NO.	DATE	BY	CHKD.
1	10/1/55	J.W.	J.W.
2	10/1/55	J.W.	J.W.
3	10/1/55	J.W.	J.W.
4	10/1/55	J.W.	J.W.
5	10/1/55	J.W.	J.W.
6	10/1/55	J.W.	J.W.

VIII.

This is not a disposal site for EFFLUENT Liquid.

As previously stated, the purpose of this site is to process natural gas. There will be some produced water, and condensate which will be recovered from the natural gas. These liquids will be stored in the API. tanks, and will be hauled from location. The produced water will be disposed of by a trucking company, either Rowland Trucking, or AA Oilfield Service. Both of these companies have approved disposal wells which they use, and charge us for the disposal of the produced water.

The condensate will be sold to a refinery. The refinery of choice will be elected by price, and they will pick up the condensate from the storage tank and transport it to their facility.

The storage tank will be monitored by our operators on a daily bases. Our operators will be reporting to their supervisor if this tank should need any further attention. Our supervisors have the means to order a truck to haul liquid at the time our operator's report to him. With this type of check, and safety check, there should be no ground water contamination to contend with.

Simply stated, if the liquid is contained in the tank, then it cannot contaminate the ground, or ground water.

IX.

This facility will have operators which will check the operations of the facility on daily bases. The operator will report the functioning of the complete plant, and a log will be kept of the units. If the operator should locate any problem in any of the equipment, what-so-ever, he will report the problem to his supervisor.

In the event of a "reportable spill", the operator would notify his supervisor immediately of the occurrence. The supervisor would in turn notify his immediate supervisor, and our emergency report and operating plan would be implemented.

Fluids will be collected inside pressure vessels. These vessels will be ASME stamped, approved, pressure vessels. Therefore, no precipitation can be collected in them, or commingled with produced fluids.

The compressor units have "environmental" skids, which will not allow precipitation which has contacted this unit to runoff onto the ground. The unit skid will be piped into a "sump" which will transfer all fluids to above ground storage tanks. As previously stated the contents of this tank will be hauled by truck as often as necessary to assure proper levels are maintained.

X.

Our contingency plan for cleaning up spills, and reporting same is not complicated. We have a supervisor on call who is available on 24 hours a day. There are administrative support supervisors available when ever needed.

If a spill should occur, the supervisor on duty would start the field operations of the clean-up, by first stopping the source of the spill, and containing all fluids that he possibly can. The on duty supervisor would notify the support people of the situation. The OCD would be notified pursuant to rule 116, and a contractor would be dispatched at that time to start clean up. The land owner would be notified, and all measures would be taken to protect his live-stock, as well as any wild animals.

All clean up would be carried out in an approved manner, and all necessary waste would be dealt with accordingly.

## XI. SITE CHARACTERISTICS

A. Information obtained through the State of New Mexico's Engineering offices reveals that there are three existing water wells listed in Township 23 South, Range 34 East, N.M.P.M, Lea County, New Mexico. There are no exact water analysis available at this time, however, the Hydrologic and Geologic Data from the State Engineer's office is included on the attached Exhibit.

This is not a disposal site, for Effluent liquids. As previously stated, all liquids are contained, held in closed tanks, and properly disposed of by trucking. (also see section 5)

### Hydrologic and Geologic Data

Sec.*	Depth to Groundwater (Date Sampled)	Clorides (mg/l)	Conductivity (Ohm)	Formation (Age)	H <sub>2</sub> O Level	Surface Elevation	H <sub>2</sub> O Elevation
16	400' March 1986	55	28.20	Santa Rosa (Triassic)	348'	3478'	3130'
22	428' May 1991	ND	ND	Santa Rosa (Triassic)	282'	3420'	3138'
23	500' March 1981	40	22.95	Santa Rosa (Triassic)	252'	3374'	3139'

\* All data from Township 23 South, Range 34 East, N.M.P.M., Lea County, New Mexico.

DISCHARGE PLAN INSPECTION REPORT FOR  
REFINERIES, GAS PLANTS AND COMPRESSOR STATIONS

rev. 12/93

**OPERATOR:** Hadson Pipeline Companies  
**FACILITY NAME:** Antelope Ridge GP  
**GW-#:** GW-162  
**TYPE:** gas plant  
**LOCATION:** SW/4 SE/4 Sect. 15, T23S, R34E  
**COUNTY:** Lea  
**INSPECTION DATE:** Sept. 28, 1993  
**INSPECTOR(S):** Gary Wink (Hobbs), Roger Anderson, Bobby Myers

This site is being upgraded.

BELOW GRADE

**Sumps:** both compressor building sump and process skid sump are to be built with secondary containment.

**Piping:** all new lines being laid.

CONTAINMENT

**Berms:** to be built around two waste liquid storage tanks.

**Pad & Curb:** all process units and compressors are on skids with runoff draining to sumps or wastewater tanks.

WASTE STREAM

**Liquid:** all sumps and skid pads drain to wastewater tanks

**Solid:** ?

GENERAL

**Drips:** no obvious drips or stains since this site is under construction.

signature

Bobby Myers

date

January 24, 1994





STATE OF NEW MEXICO  
ENERGY, MINERALS AND NATURAL RESOURCES DEPARTMENT  
OIL CONSERVATION DIVISION



BRUCE KING  
GOVERNOR

September 27, 1993

ANITA LOCKWOOD  
CABINET SECRETARY

POST OFFICE BOX 2088  
STATE LAND OFFICE BUILDING  
SANTA FE, NEW MEXICO 87504  
(505) 827-5800

**CERTIFIED MAIL**  
**RETURN RECEIPT NO. P-111-334-266**

Mr. Larry R. Landis  
Adobe Gas Pipeline Company  
5201 Truxton Ave., Suite 100  
Bakersfield, California 93309

**Re: Antelope Ridge Gas Plant  
Adobe Gas Pipeline Company  
Lea County, New Mexico**

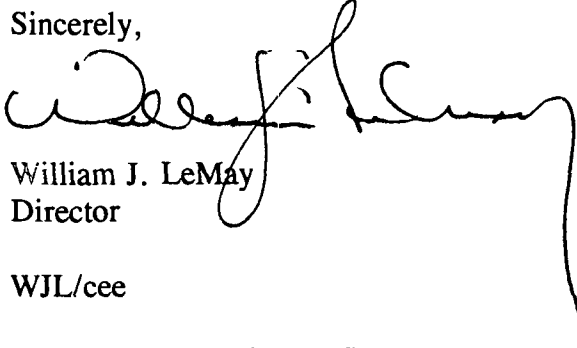
Dear Mr. Landis:

The Oil Conservation Division (OCD) has received your request dated September 15, 1993 for a 120 day authorization to discharge without an approved discharge plan.

Pursuant to Section 3-106.B. of the New Mexico Water Quality Control Commission (WQCC) regulations and for good cause shown, Adobe Gas Pipeline Company is hereby granted an extension to start-up and operate the above referenced facility without an approved discharge plan for 120 days from commencement of operations. This extension is granted to allow the, OCD time to conduct a facility inspection and for Adobe Gas Pipeline Company to incorporate any requirements into their discharge plan application.

Please notify the OCD in writing when the facility commences operations. If you have any questions, please feel free to contact Chris Eustice at (505) 827-5824.

Sincerely,

  
William J. LeMay  
Director

WJL/cee

xc: OCD - Hobbs Office

- deadline 120 days after start-up  
- had not started up by 9/27 (site inspection 9/29)

ADOBE  
GAS PIPELINE  
COMPANY

Subsidiaries:  
Adobe Gas Marketing Co.  
Adobe Gas Gathering & Processing Co.  
Adobe Gas Co.

September 15, 1993



RECEIVED

SEP 23 1993

OIL CONSERVATION DIV.  
SANTA FE

William J. LeMay, Director  
New Mexico Oil Conservation Division  
310 Old Santa Fe Trail  
Santa Fe, New Mexico 87501

RE: Request for Extension for the Submittal of a Ground  
Water Discharge Plan for Adobe Gas Pipeline Company's  
Antelope Ridge Gas Plant, Lea County, New Mexico

Dear Mr. LeMay:

Adobe Gas Pipeline Company (Adobe) plans to restart the Antelope Ridge Gas Plant and compression station on approximately September 27, 1993. On August 3, 1993, Jim Hightower of Adobe's staff was notified by your staff that this plant will be considered a new facility, and as such will require the submittal of a Ground Water Discharge Plan. While we do not see how the plant could be considered a new facility, we are not opposed to preparing a Ground Water Discharge Plan. As described in New Mexico Water Quality Control Commission Regulation 3-106.A, Adobe requests a 120-day extension for the submittal of the subject plan.

This facility originally began operations on October 1, 1981, under the ownership of the Florida Hydrocarbon Company. Adobe acquired Florida Hydrocarbon's interest in the plant and operated it until July 1985. Since July of 1985 Adobe has maintained the plant on a standby status. Your granting our request for extension will facilitate startup and compliance with your requirements.

Should you need additional information regarding this request, please contact Michael Lewis at (800) 729-3992, Ext. 3134, FAX (805) 633-3193.

Sincerely,

L. R. Landis  
Environmental Manager

MRL:amm

cc: C. E. Eustice-Oil Conservation Division

038.ML3