

GW - 202

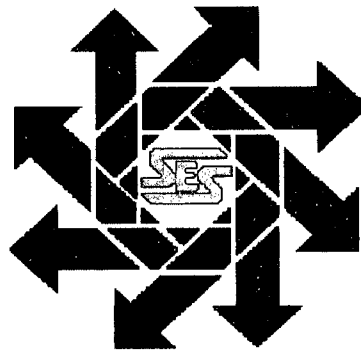
MONITORING REPORTS

DATE:

2002

***Pro-Kem, Inc.
Monitor Well Report
Section 15, T16S, R36E
Lea County, New Mexico***

June 25, 2002



Prepared for:

***Pro-Kem, Inc.
P.O. Box 1506
Lovington, New Mexico 88260***

By:

***Safety & Environmental Solutions, Inc.
703 E. Clinton, Suite 102
Hobbs, New Mexico 88240
(505) 397-0510***

TABLE OF CONTENTS

I. Background..... 1

II. Work Performed 1

III. Analytical Results 2

IV. Figures and Appendices..... 2

I. Background

The subject property is located in south Lovington, New Mexico adjacent to NM Highway 18 in Section 15, Township 16S, Range 36E. Safety & Environmental Solutions, Inc. (SESI) performed sampling and data collection on the three (3) ground water monitor wells previously installed in November 1997 at the site (See Vicinity Map). The casing size in all wells is 2".

II. Work Performed

On June 25, 2002 an environmental technician with SESI arrived at the site. Ground water samples were taken from each well after a hand bailer was used to develop the wells. Three to five casing volumes of water were removed from each well until pH and temperature of the water were stabilized. The samples were obtained and placed in appropriate containers, preserved and transported under chain of custody to Cardinal Laboratories of Hobbs, New Mexico for analysis for the contaminants Carbon Tetrachloride, and BTEX. (See Analytical Data)

In addition to the sampling, SESI also measured the depth to the top of the water table and the total depth of each well. The depth to the top of ground water was measured using a Solinst water level indicator. The total depth of each well was measured in order to compute the proper casing volumes. A groundwater potentiometric and gradient map was prepared using the measured depth to water and previously surveyed top of casing elevations. A summary of this data follows:

ID	DATE	TOP OF CASING ELEVATION	DEPTH TO WATER	POTENTIO METRIC ELEVATION	TOTAL WELL DEPTH	FREE PRODUCT THICKNESS
MW - 1	6/25/02	3895.67'	60.96'	3834.71'	73.36'	0.00
MW - 2	6/25/02	3894.33'	60.22'	3834.11'	70.51'	0.00
MW - 3	6/25/02	3894.13'	60.95'	3833.18'	71.44'	0.00

III. Analytical Results

The analysis of the groundwater samples performed by Cardinal Laboratories are summarized as follows:

CONTAMINANT	WQCC STANDARD	MW #1	MW #2	MW #3
Carbon Tet.	0.01 ppm	0.528ppm	0.022ppm	0.115ppm
Benzene	0.01 ppm	<0.005ppm	<0.005ppm	<0.005ppm
Toluene	0.75 ppm	<0.005ppm	<0.005ppm	<0.005ppm
Ethyl Benzene	0.75 ppm	<0.005ppm	<0.005ppm	<0.005ppm
Total Xylenes	0.62 ppm	<0.010ppm	<0.010ppm	<0.010ppm

IV. Figures and Appendices

Figures:

Vicinity Map

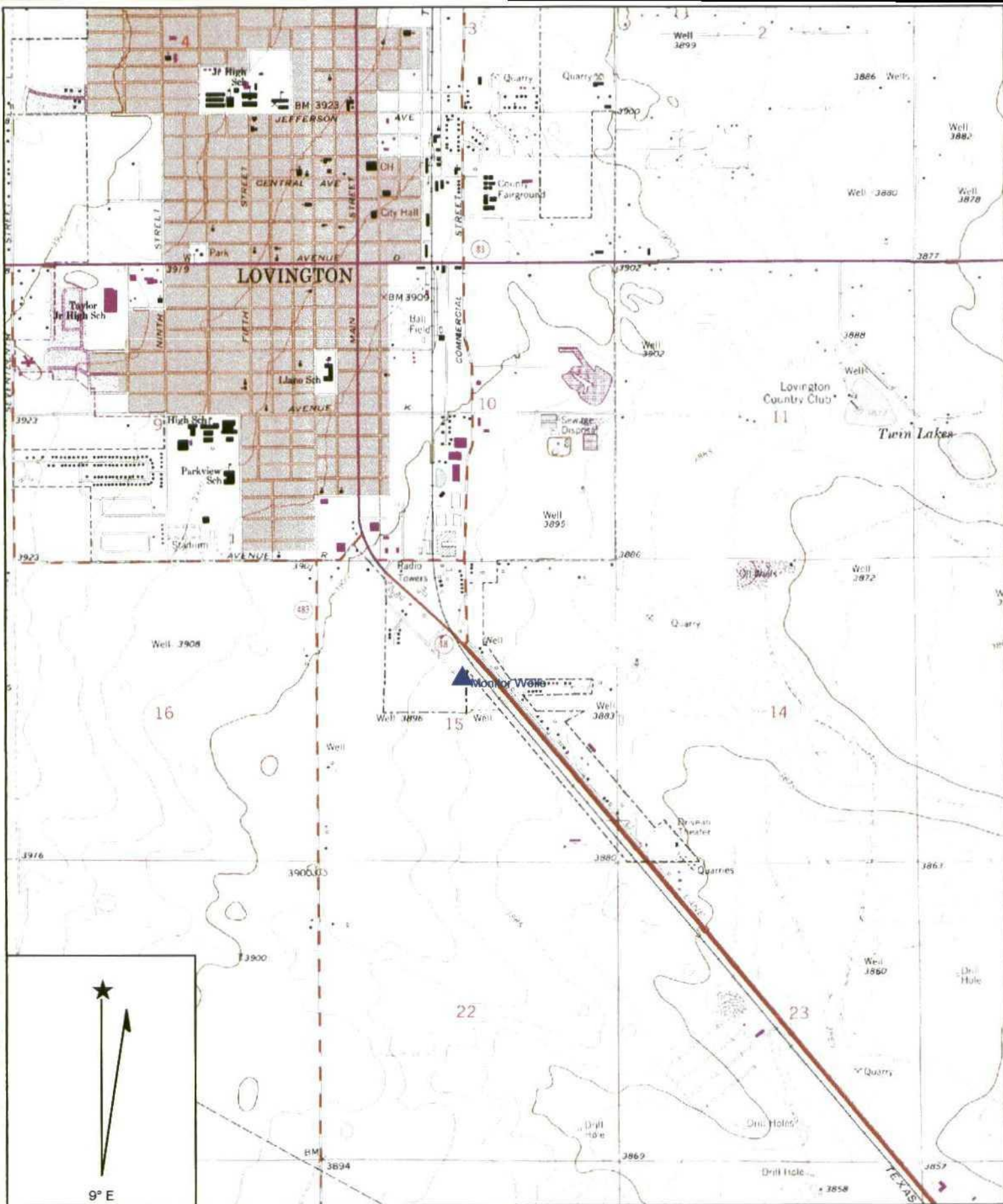
Potentiometric Map

Appendices:

Cumulative Well Water Quality Data Results

Analytical Results

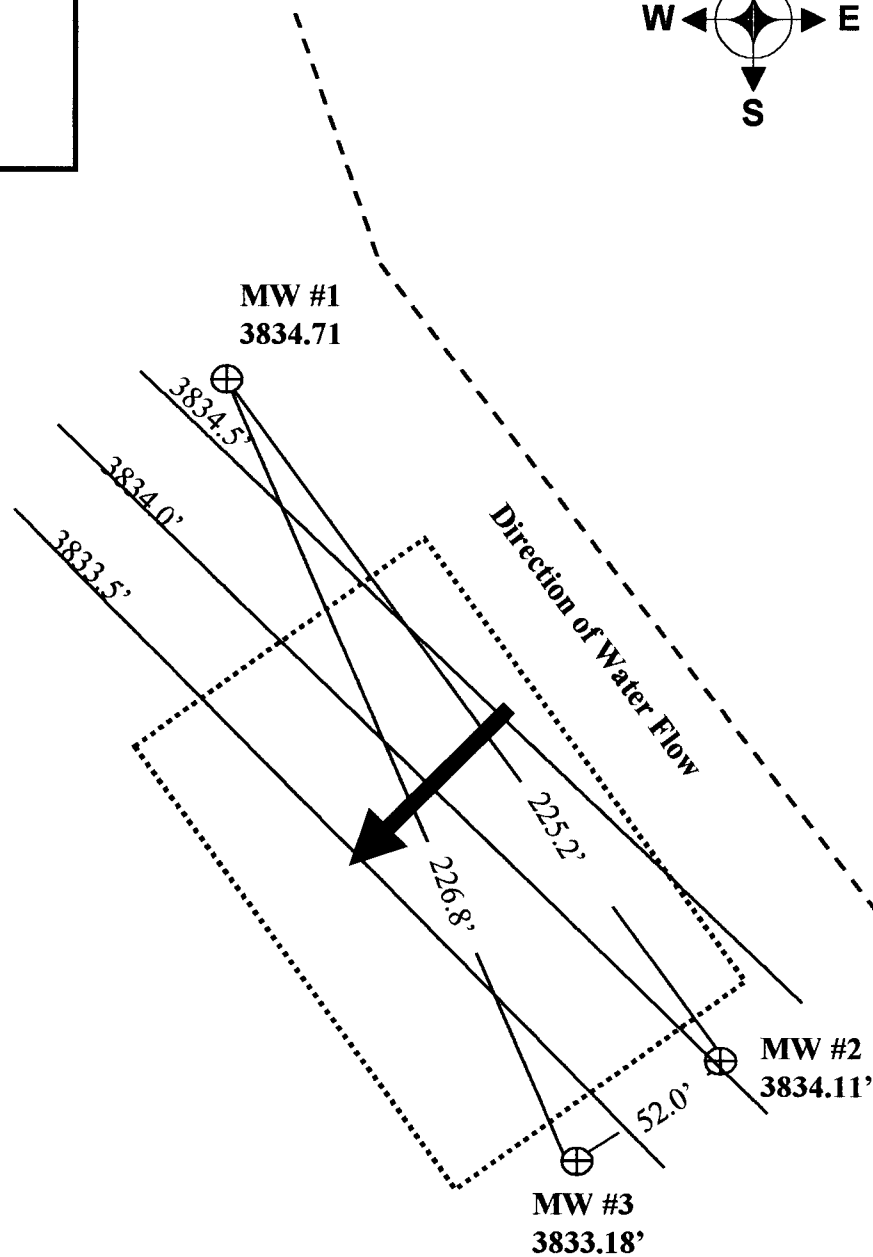
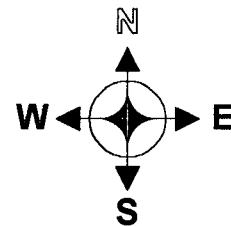
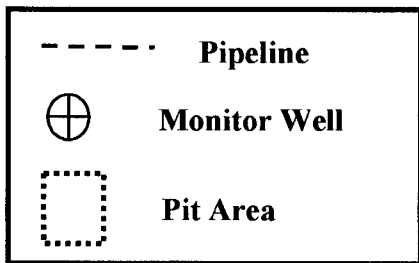
Figure 1
Vicinity Map



Name: LOVINGTON
 Date: 7/25/2002
 Scale: 1 inch equals 2222 feet

Location: 032° 55' 37.4" N 103° 20' 23.6" W
 Caption: Pro-Kem, Inc.
 Lovington Yard Monitor Well
 Vicinity Map

Figure 2
Potentiometric Map



Section 15,
 Township 16 South
 Range 36 East, N.M.P.M.

1" = 50'
 Contour Interval 0.5'
 Gradient = 0.020



ProKem, Inc.
 June 25, 2002

**Groundwater
 Potentiometric Map**

**Safety & Environmental
 Solutions, Inc.**
 Hobbs, New Mexico

Appendix A
Cumulative Well Water Quality Data Results

ProKem, Inc. Cumulative Well Data

Monitor Well #1

CONTAMINANT	WQCC STANDARD	TEST DATE 1/8/99	TEST DATE 4/16/99	TEST DATE 12/8/99
Chloride	250.0ppm	56ppm	N/A	N/A
Carbon Tetrachloride	0.002ppm	.342ppm	.338ppm	.366ppm
Benzene	0.01ppm	<0.002ppm	<0.002ppm	<0.002ppm
Toluene	0.75ppm	<0.002ppm	<0.002ppm	<0.002ppm
E. Benzene	0.75ppm	<0.002ppm	<0.002ppm	<0.002ppm
Total Xylenes	0.62ppm	<0.006ppm	<0.006ppm	<0.006ppm
TPH	N/A	<1.0ppm	N/A	N/A

CONTAMINANT	WQCC STANDARD	TEST DATE 2/22/00	TEST DATE 6/16/00	TEST DATE 9/6/00
Chloride	250.0ppm	N/A	N/A	N/A
Carbon Tetrachloride	0.002ppm	.589ppm	0.144ppm	0.460ppm
Benzene	0.01ppm	<0.002ppm	<0.002ppm	<0.005ppm
Toluene	0.75ppm	<0.002ppm	<0.002ppm	<0.005ppm
E. Benzene	0.75ppm	<0.002ppm	<0.002ppm	<0.005ppm
Total Xylenes	0.62ppm	<0.006ppm	<0.004ppm	<0.015ppm
TPH	N/A	N/A	N/A	N/A

CONTAMINANT	WQCC STANDARD	TEST DATE 3/19/01	TEST DATE 6/25/02
Chloride	250.0ppm	N/A	N/A
Carbon Tetrachloride	0.002ppm	0.817ppm	0.528ppm
Benzene	0.01ppm	<0.005ppm	<0.005ppm
Toluene	0.75ppm	<0.005ppm	<0.005ppm
E. Benzene	0.75ppm	<0.005ppm	<0.005ppm
Total Xylenes	0.62ppm	<0.010ppm	<0.010ppm
TPH	N/A	N/A	N/A

Monitor Well #2

CONTAMINANT	WQCC STANDARD	TEST DATE 1/8/99	TEST DATE 4/16/99	TEST DATE 12/8/99
Chloride	250.0ppm	94ppm	N/A	N/A
Carbon Tetrachloride	0.002ppm	0.17ppm	0.15ppm	.008ppm
Benzene	0.01ppm	<0.002ppm	<0.002ppm	<0.002ppm
Toluene	0.75ppm	<0.002ppm	<0.002ppm	<0.002ppm
Ethyl Benzene	0.75ppm	<0.002ppm	<0.002ppm	<0.002ppm
Total Xylenes	0.62ppm	<0.006ppm	<0.006ppm	<0.006ppm
TPH	N/A	1.47ppm	N/A	N/A

CONTAMINANT	WQCC STANDARD	TEST DATE 2/22/00	TEST DATE 6/16/00	TEST DATE 9/6/00
Chloride	250.0ppm	N/A	N/A	N/A
Carbon Tetrachloride	0.002ppm	.354ppm	0.006ppm	<0.005ppm
Benzene	0.01ppm	<0.002ppm	<0.002ppm	<0.005ppm
Toluene	0.75ppm	<0.002ppm	<0.002ppm	<0.005ppm
Ethyl Benzene	0.75ppm	<0.002ppm	<0.002ppm	<0.005ppm
Total Xylenes	0.62ppm	<0.006ppm	<0.004ppm	<0.015ppm
TPH	N/A	N/A	N/A	N/A

CONTAMINANT	WQCC STANDARD	TEST DATE 3/19/01	TEST DATE 6/25/02
Chloride	250.0ppm	N/A	N/A
Carbon Tetrachloride	0.002ppm	0.023ppm	0.022ppm
Benzene	0.01ppm	<0.005ppm	<0.005ppm
Toluene	0.75ppm	<0.005ppm	<0.005ppm
Ethyl Benzene	0.75ppm	<0.005ppm	<0.005ppm
Total Xylenes	0.62ppm	<0.010ppm	<0.010ppm
TPH	N/A	N/A	N/A

Monitor Well #3

CONTAMINANT	WQCC STANDARD	TEST DATE 1/8/99	TEST DATE 4/16/99	TEST DATE 12/8/99
Chloride	250.0ppm	116ppm	N/A	N/A
Carbon Tetrachloride	0.002ppm	.111ppm	.109ppm	.353ppm
Benzene	0.01ppm	<0.002ppm	<0.002ppm	<0.002ppm
Toluene	0.75ppm	<0.002ppm	<0.002ppm	<0.002ppm
Ethyl Benzene	0.75ppm	<0.002ppm	<0.002ppm	<0.002ppm
Total Xylenes	0.62ppm	<0.006ppm	<0.006ppm	<0.006ppm
TPH	N/A	<1.0ppm	N/A	N/A

CONTAMINANT	WQCC STANDARD	TEST DATE 2/22/00	TEST DATE 6/16/00	TEST DATE 9/6/00
Chloride	250.0ppm	N/A	N/A	N/A
Carbon Tetrachloride	0.002ppm	.007ppm	0.438ppm	0.155ppm
Benzene	0.01ppm	<0.002ppm	<0.002ppm	<0.005ppm
Toluene	0.75ppm	<0.002ppm	<0.002ppm	<0.005ppm
Ethyl Benzene	0.75ppm	<0.002ppm	<0.002ppm	<0.005ppm
Total Xylenes	0.62ppm	<0.006ppm	<0.004ppm	<0.015ppm
TPH	N/A	N/A	N/A	N/A

CONTAMINANT	WQCC STANDARD	TEST DATE 3/19/01	TEST DATE 6/25/02
Chloride	250.0ppm	N/A	N/A
Carbon Tetrachloride	0.002ppm	0.136ppm	0.115ppm
Benzene	0.01ppm	<0.005ppm	<0.005ppm
Toluene	0.75ppm	<0.005ppm	<0.005ppm
Ethyl Benzene	0.75ppm	<0.005ppm	<0.005ppm
Total Xylenes	0.62ppm	<0.010ppm	<0.010ppm
TPH	N/A	N/A	N/A

Appendix B
Analytical Results



ARDINAL LABORATORIES

PHONE (915) 673-7001 • 2111 BEECHWOOD • ABILENE, TX 79603

PHONE (505) 393-2326 • 101 E. MARLAND • HOBBS, NM 88240

ANALYTICAL RESULTS FOR
SAFETY & ENVIRONMENTAL SOLUTIONS, INC.
ATTN: BOB ALLEN
703 E. CLINTON, #103
HOBBS, NM 88240
FAX TO: (505) 393-4388

Receiving Date: 06/25/02
Reporting Date: 06/26/02
Project Number: NOT GIVEN
Project Name: PRO-KEM
Project Location: LOVINGTON, NM
Lab Number: H6838-1
Sample ID: MW #1

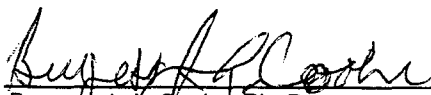
Analysis Date: 06/25/02
Sampling Date: 06/25/02
Sample Type: GROUNDWATER
Sample Condition: COOL & INTACT
Sample Received By: AH
Analyzed By: BC

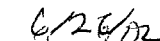
VOLATILES (mg/L)	Sample Result	Method Blank	True Value		
			QC	%Recov.	QC
Benzene	<0.005	<0.005	0.111	111	0.100
Carbon Tetrachloride	0.528	<0.005	0.116	116	0.100
Toluene	<0.005	<0.005	0.112	112	0.100
Ethylbenzene	<0.005	<0.005	0.111	111	0.100
m,p-Xylene	<0.005	<0.005	0.218	109	0.200
o-Xylene	<0.005	<0.005	0.110	110	0.100

% RECOVERY

Dibromofluoromethane	90
Toluene-d8	99
Bromofluorobenzene	101

METHODS: EPA SW-846 8260


Burgess J. A. Cooke, Ph. D.


Date

PLEASE NOTE: **Liability and Damages.** Cardinal's liability and client's exclusive remedy for any claim arising, whether based in contract or tort, shall be limited to the amount paid by client for analyses. All claims, including those for negligence and any other cause whatsoever shall be deemed waived unless made in writing and received by Cardinal within thirty (30) days after completion of the applicable service. In no event shall Cardinal be liable for incidental or consequential damages, including, without limitation, business interruptions, loss of use, or loss of profits incurred by client, its subsidiaries, affiliates or successors arising out of or related to the performance of services hereunder by Cardinal, regardless of whether such claim is based upon any of the above-stated reasons or otherwise.



PHONE (915) 673-7001 • 2111 BEECHWOOD • ABILENE, TX 79603

PHONE (505) 393-2326 • 101 E. MARLAND • HOBBS, NM 88240

ANALYTICAL RESULTS FOR
SAFETY & ENVIRONMENTAL SOLUTIONS, INC.
ATTN: BOB ALLEN
703 E. CLINTON, #103
HOBBS, NM 88240
FAX TO: (505) 393-4388

Receiving Date: 06/25/02
Reporting Date: 06/26/02
Project Number: NOT GIVEN
Project Name: PRO-KEM
Project Location: LOVINGTON, NM
Lab Number: H6838-2
Sample ID: MW #2

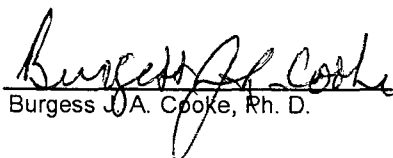
Analysis Date: 06/25/02
Sampling Date: 06/25/02
Sample Type: GROUNDWATER
Sample Condition: COOL & INTACT
Sample Received By: AH
Analyzed By: BC

VOLATILES (mg/L)	Sample Result	Method Blank	True Value		
			QC	%Recov.	QC
Benzene	<0.005	<0.005	0.111	111	0.100
Carbon Tetrachloride	0.022	<0.005	0.116	116	0.100
Toluene	<0.005	<0.005	0.112	112	0.100
Ethylbenzene	<0.005	<0.005	0.111	111	0.100
m,p-Xylene	<0.005	<0.005	0.218	109	0.200
o-Xylene	<0.005	<0.005	0.110	110	0.100

% RECOVERY

Dibromofluoromethane	83
Toluene-d8	99
Bromofluorobenzene	100

METHODS: EPA SW-846 8260


Burgess A. Cooke, Rh. D.

6/26/02
Date

PLEASE NOTE: **Liability and Damages.** Cardinal's liability and client's exclusive remedy for any claim arising, whether based in contract or tort, shall be limited to the amount paid by client for analyses. All claims, including those for negligence and any other cause whatsoever shall be deemed waived unless made in writing and received by Cardinal within thirty (30) days after completion of the applicable service. In no event shall Cardinal be liable for incidental or consequential damages, including, without limitation, business interruptions, loss of use, or loss of profits incurred by client, its subsidiaries, affiliates or successors arising out of or related to the performance of services hereunder by Cardinal, regardless of whether such claim is based upon any of the above-stated reasons or otherwise.



ARDINAL LABORATORIES

PHONE (915) 673-7001 • 2111 BEECHWOOD • ABILENE, TX 79603

PHONE (505) 393-2326 • 101 E. MARLAND • HOBBS, NM 88240

ANALYTICAL RESULTS FOR
SAFETY & ENVIRONMENTAL SOLUTIONS, INC.
ATTN: BOB ALLEN
703 E. CLINTON, #103
HOBBS, NM 88240
FAX TO: (505) 393-4388

Receiving Date: 06/25/02
Reporting Date: 06/26/02
Project Number: NOT GIVEN
Project Name: PRO-KEM
Project Location: LOVINGTON, NM
Lab Number: H6838-3
Sample ID: MW #3

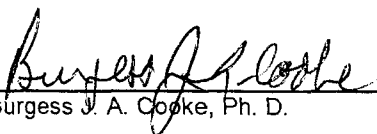
Analysis Date: 06/25/02
Sampling Date: 06/25/02
Sample Type: GROUNDWATER
Sample Condition: COOL & INTACT
Sample Received By: AH
Analyzed By: BC


VOLATILES (mg/L)	Sample Result	Method Blank	QC	%Recov.	True Value QC
Benzene	<0.005	<0.005	0.111	111	0.100
Carbon Tetrachloride	0.115	<0.005	0.116	116	0.100
Toluene	<0.005	<0.005	0.112	112	0.100
Ethylbenzene	<0.005	<0.005	0.111	111	0.100
m,p-Xylene	<0.005	<0.005	0.218	109	0.200
o-Xylene	<0.005	<0.005	0.110	110	0.100

% RECOVERY

Dibromofluoromethane	81
Toluene-d8	93
Bromofluorobenzene	95

METHODS: EPA SW-846 8260


Burgess J. A. Cooke, Ph. D.


Date

PLEASE NOTE: **Liability and Damages.** Cardinal's liability and client's exclusive remedy for any claim arising, whether based in contract or tort, shall be limited to the amount paid by client for analyses. All claims, including those for negligence and any other cause whatsoever shall be deemed waived unless made in writing and received by Cardinal within thirty (30) days after completion of the applicable service. In no event shall Cardinal be liable for incidental or consequential damages, including, without limitation, business interruptions, loss of use, or loss of profits incurred by client, its subsidiaries, affiliates or successors arising out of or related to the performance of services hereunder by Cardinal, regardless of whether such claim is based upon any of the above-stated reasons or otherwise.



2111 Beechwood, Abilene, TX 79603 101 East Marland, Hobbs, NM 88240
(915) 673-7001 Fax (915) 673-7020 (505) 393-2326 Fax (505) 393-2476

Page 7 of 1

CHAIN-OF-CUSTODY AND ANALYSIS REQUEST

[illegible]

+ Cardinal cannot accept verbal changes. Please fax written changes to (915) 673-7020.

