

GW - 311

**GENERAL  
CORRESPONDENCE**

**YEAR(S):**  
2007 - 1998

THE SANTA FE  
**NEW MEXICAN** RECEIVED  
Founded 1849

APR 30 2007

Oil Conservation Division  
1220 S. St. Francis Drive  
Santa Fe, NM 87505

NM EMNRD OIL CONSERV

ATTN: Carl Chavez  
1220 S ST FRANCIS DR  
SANTA FE NM 87505

ALTERNATE ACCOUNT: 56689

AD NUMBER: 00211726 ACCOUNT: 00002212

LEGAL NO: 80841 P.O. #: 52100-3956

859 LINES 1 TIME(S) 481.04

AFFIDAVIT: 6.00

TAX: 37.14

TOTAL: 524.18

AFFIDAVIT OF PUBLICATION

STATE OF NEW MEXICO  
COUNTY OF SANTA FE

I, R. Lara, being first duly sworn declare and say that I am Legal Advertising Representative of THE SANTA FE NEW MEXICAN, a daily newspaper published in the English language, and having a general circulation in the Counties of Santa Fe and Los Alamos, State of New Mexico and being a newspaper duly qualified to publish legal notices and advertisements under the provisions of Chapter 167 on Session Laws of 1937; that the publication # 80841 a copy of which is hereto attached was published in said newspaper 1 day(s) between 04/26/2007 and 04/26/2007 and that the notice was published in the newspaper proper and not in any supplement; the first date of publication being on the 26th day of April, 2007 and that the undersigned has personal knowledge of the matter and things set forth in this affidavit.

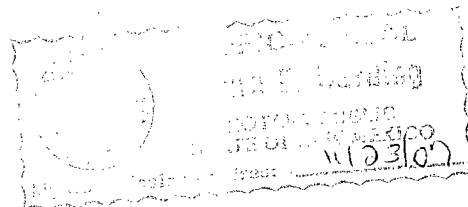
/S/

LEGAL ADVERTISEMENT REPRESENTATIVE

Subscribed and sworn to before me on this 26th day of April, 2007

Notary

Commission Expires:



**NOTICE OF  
PUBLICATION**

**STATE OF  
NEW MEXICO  
ENERGY, MINERALS  
AND NATURAL  
RESOURCES  
DEPARTMENT  
OIL CONSERVATION  
DIVISION**

Notice is hereby given that pursuant to New Mexico Water Quality Control Commission Regulations (20.6.2.3106 NMAC), the following discharge permit application(s) has been submitted to the Director of the New Mexico Oil Conservation Division ("NMOCD"), 1220 S. Saint Francis Drive, Santa Fe, New Mexico 87505, Telephone (505) 476-3440:

(GW-162) DCP Midstream LP, Elisabeth Klein, Principal Environmental Specialist, 370 17th Street, Suite 2500 Denver, Colorado 80202, has submitted a renewal application for the previously approved discharge plan for their Antelope Ridge Gas Plant located in the SW/4, SE/4 of Section 15, Township 23 South, Range 34 East, NMPM, Lea County, New Mexico. The plant is located approximately 21.6 miles west on CR-21 from SR-207 to a "lease road" and then south about 2 miles. Natural gas products, waste oil and water are stored in above ground tanks prior to being transported off-site to OCD approved facilities. Groundwater most likely to be affected by a spill, leak or accidental discharge is at a depth of approximately 400 feet below the ground surface, with a total dissolved solids concentration of 55 mg/L. The discharge plan addresses how oilfield products and wastes will be properly handled, stored, and disposed of, including how spills, leaks, and other accidental discharges to the surface will be managed in order to protect fresh water.

(GW-167) DCP Midstream LP, Elisabeth Klein, Principal Environmental Specialist, 370 17th Street, Suite 2500 Denver, Colorado 80202, has submitted a renewal application for the previously approved discharge plan for their P & P Malaga Compressor Station located in the SW/4, NE/4 of Section 3, Township 24 South, Range 28 East, NMPM, Eddy County, New Mexico. The compressor station is located approximately 500 yards northeast on CR-738 from Onsurez Road to an access road. Approximately 12 barrels per day of wastewater will be stored in above ground tanks prior to being transported off-site to OCD approved facilities. Groundwater most likely to be affected by a spill, leak or accidental discharge is at a depth of approximately 30 feet below the ground surface, with a total dissolved solids concentration of 300 mg/L. The discharge plan addresses how oilfield products and wastes will be properly handled, stored, and disposed of, including how spills, leaks, and other accidental discharges to the surface will be managed in order to protect fresh water.

(GW-176) DCP Midstream LP, Elisabeth Klein, Principal Environmental Specialist, 370 17th Street, Suite 2500 Denver, Colorado 80202, has submitted a renewal application for the previously approved discharge plan for their Bootleg Compressor Station located in the NW/4, SE/4 of Section 28, Township 22 South, Range 33 East, NMPM, Lea County, New Mexico. The compressor station is located approximately 6.4 miles

southeast on SR-176 from US-180 to an access road and 9.4 miles due south. Approximately 39 barrels per day of wastewater will be stored in above ground tanks prior to being transported off-site to OCD approved facilities. Groundwater most likely to be affected by a spill, leak or accidental discharge is at a depth of approximately 244 feet below the ground surface, with a total dissolved solids concentration of 1,973 mg/L. The discharge plan addresses how

oilfield products and wastes will be properly handled, stored, and disposed of, including how spills, leaks, and other accidental discharges to the surface will be managed in order to protect fresh water.

(GW-177) DCP Midstream LP, Elisabeth Klein, Principal Environmental Specialist, 370 17th Street, Suite 2500 Denver, Colorado 80202, has submitted a renewal application for the previously approved discharge plan for their Maljamar Compressor Station located in the NE/4, SE/4 of Section 20, Township 17 South, Range 33 East, NMPM, Lea County, New Mexico. The compressor station is located approximately 1.3 miles northwest on CR-125 from Dog Lake Road to an access road and 1.3 miles northeast. The facility is in the process of being closed and any wastewater will be stored in above ground tanks prior to being transported off-site to OCD approved facilities. Groundwater most likely to be affected by a spill, leak or accidental discharge is at a depth of approximately 25 to 175 feet below the ground surface, with a total dissolved solids concentration of 1,100 mg/L. The discharge plan addresses how oilfield products and wastes will be properly handled, stored, and disposed of, including how spills, leaks, and other accidental discharges to the surface will be managed in order to protect fresh water.

(GW-178) DCP Midstream LP, Elisabeth Klein, Principal Environmental Specialist, 370 17th Street, Suite 2500 Denver, Colorado 80202, has submitted a renewal application for the previously approved discharge plan for their Wonton Compressor Station located in the NE/4, SE/4 of Section 10, Township 17 South, Range 37 East, NMPM, Lea County, New Mexico. The compressor station is located approximately 1.25 miles east of SR-18. Any wastewater will be stored in above ground tanks prior to being transported off-site to OCD approved facilities. Groundwater most

likely to be affected by a spill, leak or accidental discharge is at a depth of approximately 100 to 200 feet below the ground surface, with a total dissolved solids concentration of 1,100 mg/L. The discharge plan addresses how oilfield products and wastes will be properly handled, stored, and disposed of, including how spills, leaks, and other accidental discharges to the surface will be managed in order to protect fresh water.

(GW-280) DCP Midstream LP, Elisabeth Klein, Principal Environmental Specialist, 370 17th Street, Suite 2500 Denver, Colorado 80202, has submitted a renewal application for the previously approved discharge plan for their Northeast Carlsbad Compressor Station located in the SE/4, NE/4 of Section 6, Township 21 South, Range 28 East, NMPM, Eddy County, New Mexico. The compressor station is located approximately 2.5 miles north-northwest on CR-243 from US-180. Natural gas products, waste oil and water are stored in above ground tanks prior to being transported off-site to OCD approved facilities. Groundwater most likely to be affected by a spill, leak or accidental discharge is at a depth of approximately 13 to 30 feet below the ground surface, with a total dissolved solids concentration of 3,110 mg/L. The discharge plan addresses how oilfield products and wastes will be properly handled, stored, and disposed of, including how spills, leaks, and other accidental discharges to the surface will be managed in order to protect fresh water.

(GW-311) DCP Midstream LP, Elisabeth Klein, Principal Environmental Specialist, 370 17th Street, Suite 2500 Denver, Colorado 80202, has submitted a renewal application for the previously approved discharge plan for their Cotton Draw Compressor Station located in the NE/4, NW/4 of Section 18, Township 25 South, Range 32 East, NMPM, Lea County, New Mexico. The compressor station is located approximately 6.3 miles

south on CR-1 from SR-128. Approximately 30 barrels per day of wastewater is stored in above ground tanks prior to being transported off-site to OCD approved facilities. Groundwater most likely to be affected by a spill, leak or accidental discharge is at a depth of approximately 400 feet below the ground surface, with a total dissolved solids concentration from 1,000 to 1,700 mg/L. The discharge plan addresses how oilfield products and wastes will be properly handled, stored, and disposed of, including how spills, leaks, and other accidental discharges to the surface will be managed in order to protect fresh water.

(GW-316) DCP Midstream LP. Elisabeth Klein, Principal Environmental Specialist, 370 17th Street, Suite 2500 Denver, Colorado 80202, has submitted a renewal application for the previously approved discharge plan for their Paige Hat Mesa Compressor Station located in the SW/4, NE/4 of Section 11, Township 21 South, Range 32 East, NMPM, Lea County, New Mexico. The compressor station is located approximately 1.75 miles south of the SR-176 and US-180 intersection. Approximately 6 barrels per day of wastewater is stored in above ground tanks prior to being transported off-site to OCD approved facilities. Groundwater most likely to be affected by a spill, leak or accidental discharge is at a depth of approximately 175 feet below the ground surface, with a total dissolved solids concentration of 1,000 mg/L. The discharge plan addresses how oilfield products and wastes will be properly handled, stored, and disposed of, including how spills, leaks, and other accidental discharges to the surface will be managed in order to protect fresh water.

The NMOCD has determined that the application is administratively complete and has prepared a draft permit. The NMOCD will accept comments and statements of interest regarding this application and will create a facility-specific mailing list for persons who wish to receive future notices. Persons interested in obtaining further information, submitting comments or requesting to be on a facility-specific mailing list for future notices may contact the Environmental Bureau Chief of the Oil Conservation Division at the address given above. The administrative completeness determination and draft permit may be viewed at the above address between 8:00 a.m. and 4:00 p.m., Monday through Friday, or may also be viewed at the NMOCD web site <http://www.emnrd.state.nm.us/ocd/>. Persons interested in obtaining a copy of the application and draft permit may contact the NMOCD at the address given above. Prior to ruling on any proposed discharge permit or major modification, the Director shall allow a period of at least thirty (30) days after the date of publication of this notice, during which interested persons may submit comments or request that NMOCD hold a public hearing. Requests for a public hearing shall set forth the reasons why a hearing should be held. A hearing will be held if the Director determines that there is significant public interest.

If no public hearing is held, the Director will approve or disapprove the proposed permit based on information available, including all comments received. If a public hearing is held, the director will approve or disapprove the proposed permit based on information

in the permit application and information submitted at the hearing.

Para obtener más información sobre esta solicitud en español, sirvase comunicarse por favor: New Mexico Energy, Minerals and Natural Resources Department (Depto. Del Energía, Minerals y Recursos Naturales de Nuevo México), Oil Conservation Division (Depto. Conservación Del Petróleo), 1220 South St. Francis Drive, Santa Fe, New Mexico (Contacto: Dorothy Phillips, 505-476-3461)

GIVEN under the Seal of New Mexico Oil Conservation Commission at Santa Fe, New Mexico, on this 20th day of April 2007.

STATE OF  
NEW MEXICO  
OIL CONSERVATION  
DIVISION

SEAL

Mark Fesmire,  
Director

Legal #80841

Pub. Apr. 26, 2007



# NEW MEXICO ENERGY, MINERALS and NATURAL RESOURCES DEPARTMENT

**BILL RICHARDSON**  
Governor  
**Joana Prukop**  
Cabinet Secretary

**Mark E. Fesmire, P.E.**  
Director  
Oil Conservation Division

April 20, 2007

Ms. Elisabeth Klein  
DCP Midstream, LP  
370 17th Street, Suite 2500  
Denver, Colorado 80202

**Re: Discharge Plan Renewal Permit (GW-311)  
DCP Midstream, LP  
Cotton Draw Compressor Station  
Lea County, New Mexico**

Dear Ms. Klein:

The New Mexico Oil Conservation Division (NMOCD) has received DCP Midstream LP's request and initial fee, dated February 26, 2007, to renew GW-311 for the Cotton Draw Compressor Station located in the NE/4 NW/4 of Section 18, Township 25 South, Range 32 East, NMPM, Lea County, New Mexico. The initial submittal provided the required information in order to deem the application "administratively" complete.

Therefore, the New Mexico Water Quality Control Commission regulations (WQCC) notice requirements of 20.6.2.3108 NMAC must be satisfied and demonstrated to the NMOCD. NMOCD will provide public notice pursuant to the WQCC notice requirements of 20.6.2.3108 NMAC to determine if there is any public interest.

If there are any questions regarding this matter, please do not hesitate to contact me at (505) 476-3491 or [carlj.chavez@state.nm.us](mailto:carlj.chavez@state.nm.us). On behalf of the staff of the NMOCD, I wish to thank you and your staff for your cooperation during this discharge permit review.

Sincerely,

Carl J. Chavez  
Environmental Engineer

CJC/cjc

xc: OCD District I Office, Hobbs

Chavez, Carl J, EMNRD

To: Chavez, Carl J, EMNRD  
Cc: Price, Wayne, EMNRD  
Subject: Duke Energy Field Services- Note to File

On January 4, 2007, Wayne Price and Carl Chavez of the Oil Conservation Division (OCD) contacted Ruth Lang of Duke Energy Field Services at (303) 605-1713 and left a phone message regarding the large number of expired facilities (see attachment) where the discharge plan was not renewed within 120 or in advance of their expiration. Wayne Price referred to Ms. Lang's December 2, 2006 e-mail message regarding "Duke Energy Field Services Expired Discharge Plan Facilities."

Mr. Price informed Ms. Lang that all discharge plan renewal applications need to be submitted to the OCD for review by March 1, 2007. In addition, she was informed that the OCD will be issuing an Notice of Violation for neglecting to renew its discharge plan permits with the OCD.

Carl J. Chavez, CHMM  
New Mexico Energy, Minerals & Natural Resources Dept.  
Oil Conservation Division, Environmental Bureau  
1220 South St. Francis Dr., Santa Fe, New Mexico 87505  
Office: (505) 476-3491  
Fax: (505) 476-3462  
E-mail: [CarlJChavez@state.nm.us](mailto:CarlJChavez@state.nm.us)  
Website: <http://www.emnrd.state.nm.us/ocd/>  
(Pollution Prevention Guidance is under "Publications")

1/5/2007

Permit ID	Facility	Company	Status	Expired	Contact	phone	e-mail	Comments
150	Pure Gold "28" CS	Duke	A	11/22/03	Lisabeth Klein	303-605-1778	<a href="mailto:eaklein@duke-energy.com">eaklein@duke-energy.com</a>	Request 120 day extension to 4/1/07
162	Antelope Ridge Gas Plant	Duke	A	3/23/04	Lisabeth Klein	303-605-1778	<a href="mailto:eaklein@duke-energy.com">eaklein@duke-energy.com</a>	Request 120 day extension to 4/1/07
167	Malaga CS	Duke	A	7/25/04	Lisabeth Klein	303-605-1778	<a href="mailto:eaklein@duke-energy.com">eaklein@duke-energy.com</a>	Request 120 day extension to 4/1/07
311	Cotton Draw CS	Duke	A	1/6/05	Lisabeth Klein	303-605-1778	<a href="mailto:eaklein@duke-energy.com">eaklein@duke-energy.com</a>	Request 120 day extension to 4/1/07
316	Hat Mesa CS	Duke	A	1/6/05	Lisabeth Klein	303-605-1778	<a href="mailto:eaklein@duke-energy.com">eaklein@duke-energy.com</a>	Request 120 day extension to 4/1/07
176	Boot Leg CS	Duke	A	1/20/05	Lisabeth Klein	303-605-1778	<a href="mailto:eaklein@duke-energy.com">eaklein@duke-energy.com</a>	Request 120 day extension to 4/1/07
227	Lee CS	Duke	I	12/28/05	Lisabeth Klein	303-605-1778	<a href="mailto:eaklein@duke-energy.com">eaklein@duke-energy.com</a>	Submitted correspondence to Ben Stone during meeting in Sept. 2006
168	Feagen Booster Station	Duke	I	12/27/04	Lisabeth Klein	303-605-1778	<a href="mailto:eaklein@duke-energy.com">eaklein@duke-energy.com</a>	Closed 2/1/05
177	Maljamar CS	Duke	A	3/21/05	Lisabeth Klein	303-605-1778	<a href="mailto:eaklein@duke-energy.com">eaklein@duke-energy.com</a>	Request 120 day extension to 4/1/07
178	Wonton CS	Duke	A	3/21/05	Lisabeth Klein	303-605-1778	<a href="mailto:eaklein@duke-energy.com">eaklein@duke-energy.com</a>	Request 120 day extension to 4/1/07
24	Avalon Gas Plant	Duke	A	9/18/05	Lisabeth Klein	303-605-1778	<a href="mailto:eaklein@duke-energy.com">eaklein@duke-energy.com</a>	Request 120 day extension to 4/1/07
163	Apex CS	Duke	A	4/29/04	Lisabeth Klein	303-605-1778	<a href="mailto:eaklein@duke-energy.com">eaklein@duke-energy.com</a>	Request 120 day extension to 4/1/07
175	Hobbs Gas Process Plant	Duke	A	1/9/05	Lisabeth Klein	303-605-1778	<a href="mailto:eaklein@duke-energy.com">eaklein@duke-energy.com</a>	Request 120 day extension to 4/1/07
16	Eunice Gas Plant	Duke	A	4/25/09	Lisabeth Klein	303-605-1778	<a href="mailto:eaklein@duke-energy.com">eaklein@duke-energy.com</a>	Request 120 day extension to 4/1/07
139	CP-1 CS	Duke	A	3/23/04	Lisabeth Klein	303-605-1778	<a href="mailto:eaklein@duke-energy.com">eaklein@duke-energy.com</a>	Closed 10/15/03
42	Indian Hills Gas Plant	Duke	I	4/6/2002	Lisabeth Klein	303-605-1778	<a href="mailto:eaklein@duke-energy.com">eaklein@duke-energy.com</a>	Dismantled



**Mark Bishop**  
Environmental Specialist  
SH&E Services  
Natural Gas & Gas Products

OIL CONSERVATION DIV.

01 APR 16 PM 3:20

**Conoco Inc.**  
P.O. Box 90  
Maljamar NM 88264  
Phone 505-676-3519  
Cell (281) 380-0018  
E-mail [mark.a.bishop@usa.conoco.com](mailto:mark.a.bishop@usa.conoco.com)

04/06/2001

**Return Receipt Requested**  
**Certified Mail No.**  
**7099 3220 0001 4997 4268**

Mr. Wayne Price  
New Mexico Energy, Minerals & Natural Resources Department  
Oil Conservation Division  
2040 South Pacheco Street  
Santa Fe, NM 87505

**Re: Discharge Plan GW – 311, Cotton Draw Compressor Station**  
**Inspection frequency change request**

Dear Mr. Price:

Conoco, Inc. requests that the inspection frequency required in Discharge Plan Approval Condition 12 (Housekeeping) be changed to monthly. This will allow us to maintain consistency with other facility Discharge Plans.

If you have any questions or require more information please contact me at 505-676-3519.

Sincerely,

Mark Bishop

CC:

Joyce Miley  
File: Env





**Mark Bishop**  
Environmental Specialist  
SH&E Services  
Natural Gas & Gas Product

**Conoco Inc.**  
921 W. Sanger  
Hobbs, NM 88240  
Phone 505-393-2153  
Cell (281) 380-0018  
E-mail [mark.a.bishop@usa.conoco.com](mailto:mark.a.bishop@usa.conoco.com)

October 5, 2001

**Return Receipt Requested**  
**Certified Mail No.**  
**7099 3220 0001 4997 0895**

State of New Mexico  
Energy Minerals and Natural Resources  
Oil Conservation Division  
1220 South St. Francis Dr.  
Santa Fe, NM 87505

RECEIVED  
OCT 17 2001  
Environmental Bureau  
Oil Conservation Division

**RE: GW-311 Discharge Plan**  
**Cotton Draw Compressor Station**  
**Testing of, Underground process/ Wastewater Lines and Below Grade**  
**Tanks and Sumps**

Dear Mr. Price:

In accordance with our OCD discharge plan the following actions were performed. Mr. Jerry Guy of the Oil conservation Division in Artesia was notified on July 31, 2001 of scheduled integrity tests to be performed at our Cotton Draw compressor Station. On August 9, 2001 the required integrity tests were performed with no underground leaks or lack of integrity observed. A copy of the test procedure and circle charts are included for your inspection.

If you have any questions or require more information please contact me at, 505-393-2153.

Sincerely,

*Mark Bishop*

Mark Bishop

CC: Joyce Miley  
Jeff Driver  
File: 215-2-22-3

# **OCD Underground Line Integrity Test**

## **Cotton Draw**

**August 9, 2001**

On August 9, 2001 underground liquid lines at the Cotton Draw compressor station were pressure tested to comply with the Oil Conservation Divisions annual and five-year integrity test requirements. Mr. Jerry Guy with the Artesia OCD office was notified on July 31, 2001 that tests were scheduled for both the Cedar Canyon and Cotton Draw compressor stations.

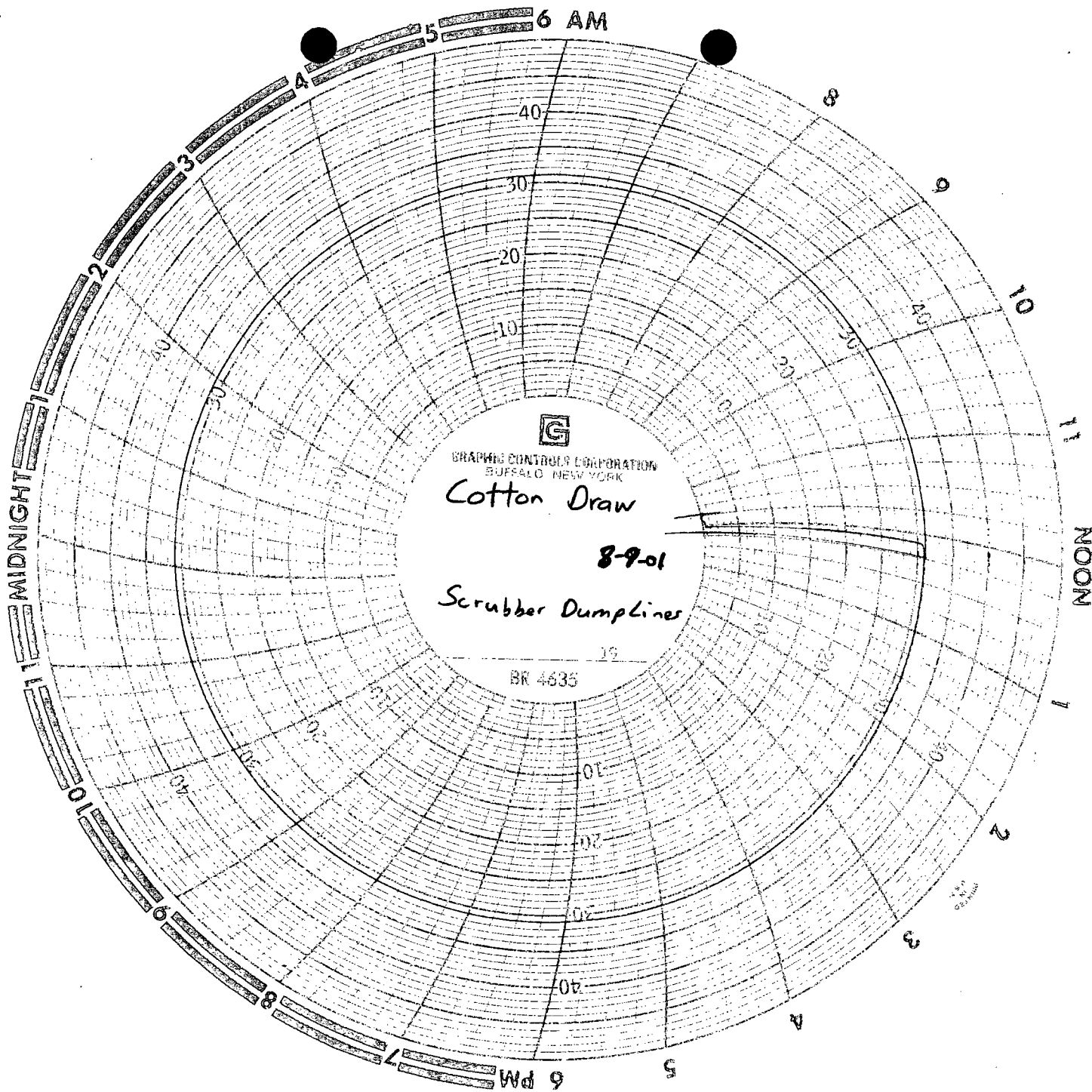
Two separate tests were conducted at the Cotton Draw station. The first test involved scrubber dump lines to the 210 bbl atmospheric condensate tank. This section of line was isolated and pressured up with gas to 32 psig and recorded on a circle chart recorder for 1 hour. ( see attached chart)

The second test involved the non-exempt waste line from the sump tank to the non-exempt waste storage tanks. This section of line was isolated and pressured up with compressed air to 16 psig and recorded on a circle chart recorder for 1 hour. ( see attached chart)

During these tests the sump tank and all associated containments were inspected and found to be in proper working condition.



Jon Kizer  
Carlsbad Area  
Maint. Supervisor



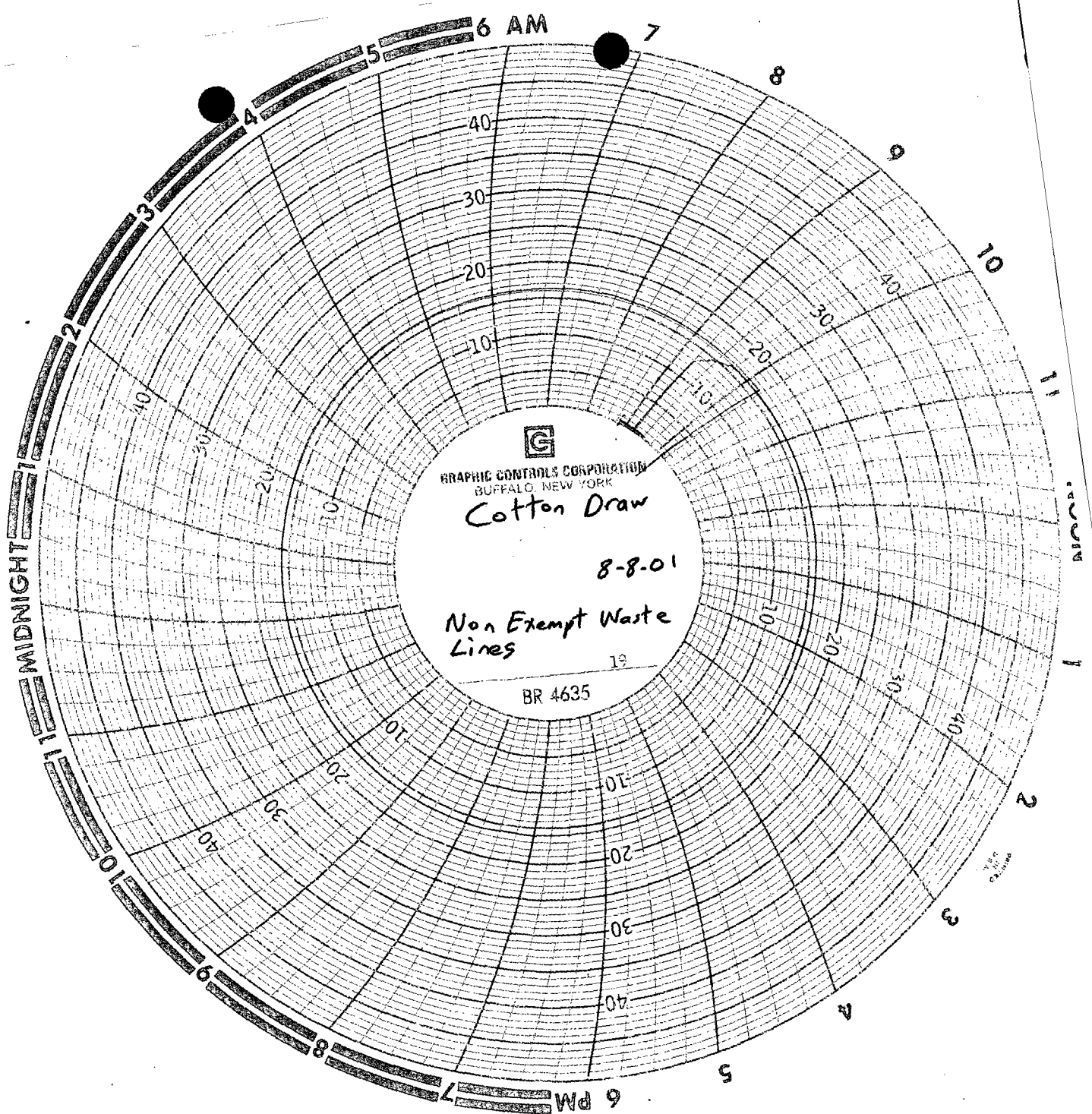
GRAPHIC CONTROLS CORPORATION  
BUFFALO, NEW YORK

Cotton Draw

8-9-01

Scrubber Dumlins

BR 4635





**Joyce M. Miley**  
Environmental Consultant  
Engineering and Compliance  
Natural Gas & Gas Products Department

**Conoco Inc.**  
600 N. Dairy Ashford Rd.  
P.O. Box 2197, HU3036  
Houston, TX 77252  
Telephone: (281) 293-4498  
Facsimile: (281) 293-1214

DEC 18 2000

CONSERVATION DIVISION

November 30, 2000

**Certified Mail No. 7099 3220 0003 1150 1803**  
**Return Receipt Requested**

**Mr. Roger Anderson**  
Environmental Bureau Chief  
New Mexico Energy, Minerals & Natural Resources Department  
Oil Conservation Division  
2040 South Pacheco Street  
Santa Fe, New Mexico 87505

Re: Change of Ownership  
Conoco Inc., Natural Gas & Gas Products Department

Dear Mr. Anderson:

Effective December 1, 2000, Conoco Inc., Natural Gas & Gas Products Department (NG&GP) assumed ownership of LG&E Natural Gathering & Processing LLC, and LG&E Natural Pipeline LLC (LG&E). These LG&E entities, in turn, own certain natural gas facilities in SE New Mexico. These facilities and their OCD Groundwater Discharge numbers are listed in the table below.

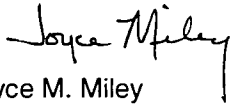
Facility Name	OCD Groundwater Discharge Permit
Antelope Ridge Gas Plant	GW-162
Hobbs Gas Plant	GW-175
Apex Compressor Station	GW-163
Bootleg (aka. NBR) Compressor Station	GW-176
Bright/Yates Compressor Station	GW-160
Cedar Canyon Compressor Station	GW-296
Cal-Mon Compressor Station	GW-143
NE Carlsbad Compressor Station	GW-280
Cotton Draw Compressor Station	GW-311
Hat Mesa Compressor Station	GW-316
Lee (aka. Lea and/or Fagan/Gillespie) Compressor Station	GW-227
Pardue Farms Compressor Station	GW-288
Pure Gold 28 Compressor Station	GW-150
Parker & Parsley (aka. Malaga) Compressor Station	GW-167

Several of these locations have conditions in their permits that require the new owner to supply a written commitment to comply with the terms and conditions of the previously approved discharge plans. LG&E has informed Conoco that all above locations are in compliance with the discharge plans. Conoco has copies of all of the approval letters and LG&E signed conditions of approval for these locations. We agree to continue to operate the locations in conformance with the groundwater permits, the approval conditions and the OCD regulations.

In addition, pursuant to certain requirements of the transaction in which Conoco acquired the entities, the names of certain entities have been changed to the following: Raptor Natural Gathering & Processing LLC and Raptor Natural Pipeline LLC (in each case replacing LG&E with Raptor).

Conoco Inc. requests that all future correspondence concerning these facilities be forwarded to me at the address above. If you have any questions or require additional information, please do not hesitate to contact Mr. Mark Bishop at (505) 623-5659 or myself at (281) 293-4498.

Sincerely,



Joyce M. Miley

cc.:

Ms. Patricia Merrill  
LG&E Energy Corp.  
220 West Main Street  
PO Box 32030  
Louisville, KY 40232-2030

**Certified Mail No. 7099 3220 0003 1150 1797**  
**Return Receipt Requested**

# Affidavit of Publication

STATE OF NEW MEXICO )  
 ) ss.  
COUNTY OF LEA )

Joyce Clemens being first duly sworn on oath deposes and says that he is Adv. Director of THE LOVINGTON DAILY LEADER, a daily newspaper of general paid circulation published in the English language at Lovington, Lea County, New Mexico; that said newspaper has been so published in such county continuously and uninterruptedly for a period in excess of Twenty-six (26) consecutive weeks next prior to the first publication of the notice hereto attached as hereinafter shown; and that said newspaper is in all things duly qualified to publish legal notices within the meaning of Chapter 167 of the 1937 Session Laws of the State of New Mexico.

That the notice which is hereto attached, entitled

Notice of Publication

GW-048 & GW-311

~~and xxxxxxxxx~~ ~~xxxxxx~~

~~County xxxxxxxx~~ ~~Lea~~

~~County xxxxxxxx~~ ~~New Mexico~~, was published in a regular and entire issue of THE LOVINGTON DAILY LEADER and not in any supplement thereof, ~~once each week on the~~

~~same day of the week~~, for One (1) Day

~~consecutive weeks~~ beginning with the issue of

June 3, 1999

and ending with the issue of

June 3, 1999

And that the cost of publishing said notice is the sum of \$ 73.92

which sum has been (Paid) (Assessed) as Court Costs

*Joyce Clemens*

Subscribed and sworn to before me this

day of June 3, 1999

*Debra Schilling*

Notary Public, Lea County, New Mexico

My Commission Expires June 22, 2002

## LEGAL NOTICE NOTICE OF PUBLICATION STATE OF NEW MEXICO ENERGY, MINERALS AND NATURAL RESOURCES DEPARTMENT OIL CONSERVATION DIVISION

Notice is hereby given that pursuant to New Mexico Water Quality Control Commission Regulations, the following discharge plan application(s) have been submitted to the Director of the Oil Conservation Division, 2040 South Pacheco, Santa Fe, New Mexico 87505, Telephone (505) 827-7131:

(GW-048) - Davis Gas Processing Company, Donald K. Judd, Agent, (915) 682-6311, 211 North Colorado Street, Midland, Texas 79701 - 4696, has submitted a discharge renewal application for the Denton Gas Plant located in the SE/4 of Section 2, Township 15 South, Range 37 East, NMPM, Lea County, New Mexico. Approximately 750 gallons per day of process waste water with a total dissolved solids concentration of approximately 2000 mg/l will be collected and stored on site in closed storage tanks prior to disposal in an OCD approved contract Injection Class II well. Ground water most likely to be affected in the event of an accidental discharge is at a depth of approximately 40 feet with a total dissolved solids concentration ranging from 610 to 1600 mg/l. The discharge plan addresses how spills, leaks, and other accidental discharges to the surface will be managed.

(GW-311) - LG&E Natural Gathering and Processing, John R. Delaney, (505) 393-2153, 921 West Sanger Street, Hobbs, New Mexico 88240, has submitted a discharge application for the Cotton Draw Compressor Station located in the NE/4 NW/4 and the NW/4 NE/4 of Section 18, Township 25 South, Range 32 East, NMPM, Lea County, New Mexico. Approximately 30 barrels per day of waste water with a total dissolved solids concentration of approximately 10,000 mg/l will be collected in an above ground closed storage tank prior to removal and disposed of in an OCD approved facility.

Ground water most likely to be affected in the event of an accidental discharge is at a depth of approximately 400 feet with a total dissolved solids concentration ranging from 1000 to 1700 mg/l. The discharge plan addresses how spills, leaks, and other accidental discharges to the surface will be managed.

Any interested person may obtain further information from the Oil Conservation Division and may submit written comments to the Director of the Oil Conservation Division at the address given above. The discharge plan application(s) may be viewed at the above address between 8:00 a.m. and 4:00 p.m., Monday through Friday. Prior to ruling on any proposed discharge plan application(s), the Director of the Oil Conservation Division shall allow at least thirty (30) days after the date of publication of this notice during which comments may be submitted and a public hearing may be requested by any interested person. Requests for a public hearing shall set forth the reasons why a hearing should be held. A hearing will be held if the Director determines there is significant public interest.

If no public hearing is held, the Director will approve or disapprove the proposed plan(s) based on information available. If a public hearing is held, the Director will approve or disapprove the proposed plan(s) based on the information in the discharge plan application(s) and information submitted at the hearing.

GIVEN under the Seal of New Mexico Oil Conservation Commission at Santa Fe, New Mexico, on this 26th day of May, 1999.

STATE OF  
NEW MEXICO  
OIL  
CONSERVATION  
DIVISION  
LORI WROTENBERY,  
Director

SEAL  
Published in the  
Lovington Daily Leader  
June 3, 1999.

# The Santa Fe New Mexican

Since 1849. We Read You.

NM OCD

ATTN: LUPE SHERMAN  
2040 S. PACHECO ST.  
SANTA FE, NM 87505

AD NUMBER: 87864      ACCOUNT: 56689  
LEGAL NO: 65487      P.O.#: 99199000357  
227 LINES      1 time(s) at \$ 99.95  
AFFIDAVITS:      5.25  
TAX:      6.57  
TOTAL:      111.77

## AFFIDAVIT OF PUBLICATION

STATE OF NEW MEXICO  
COUNTY OF SANTA FE

I, B. Peiner being first duly sworn declare and say that I am Legal Advertising Representative of THE SANTA FE NEW MEXICAN, a daily newspaper published in the English language, and having a general circulation in the Counties of Santa Fe and Los Alamos, State of New Mexico and being a Newspaper duly qualified to publish legal notices and advertisements under the provisions of Chapter 167 on Session Laws of 1937; that the publication #65487 a copy of which is hereto attached was published in said newspaper 1 day(s) between 06/01/1999 and 06/01/1999 and that the notice was published in the newspaper proper and not in any supplement; the first publication being on the 1 day of June, 1999 and that the undersigned has personal knowledge of the matter and things set forth in this affidavit.

/S/

Betty Peiner  
LEGAL ADVERTISEMENT REPRESENTATIVE

Subscribed and sworn to before me on this  
28 day of May A.D., 1999

Notary

Laura Z. Harding

Commission Expires

11/23/99



**NOTICE OF PUBLICATION**

**STATE OF NEW MEXICO  
ENERGY, MINERALS AND  
NATURAL RESOURCES  
DEPARTMENT  
OIL CONSERVATION  
DIVISION**

Notice is hereby given that pursuant to New Mexico Water Quality Control Commission Regulations, the following discharge plan application(s) have been submitted to the Director of the Oil Conservation Division, 2040 South Pacheco, Santa Fe, New Mexico 87505, Telephone (505) 827-7131:

(GW-048) Davis Gas Processing Company, Donald K. Judd, Agent, (915) 682-6311, 211 North Colorado Street, Midland, Texas 79701-4694, has submitted a discharge renewal application for the Denton Gas Plant located in the SE/4 of Section 2, Township 15 South, Range 37 East, NMPM, Lea County, New Mexico. Approximately 750 gallons per day of process waste water with a total dissolved solids concentration of approximately 2000 mg/l will be collected and stored on site in closed storage tanks prior to disposal in an OCD approved contract Injection Class II well. Ground water most likely to be affected in the event of an accidental discharge is at a depth of approximately 40 feet with a total dissolved solids concentration ranging from 610 to 1600 mg/l. The discharge plan addresses how spills, leaks, and other accidental discharges to the surface will be managed.

(GW-311) LG&E Natural Gathering and Processing, John R. Delaney, (505) 393-2153, 921 West Sanger Street, Hobbs, New Mexico 88240, has submitted a discharge application for the Cotton Draw Compressor Station located in the NE/4 NW/4 and the NW/4 NE/4 of Section 18, Township 23 South, Range 32 East, NMPM, Lea County, New Mexico. Approximately 30 barrels per day of waste water with a total dissolved solids concentration of approxi-

mately 10,000 mg/l will be collected in an above ground closed storage tank prior to removal and disposed of in an OCD approved facility. Ground water most likely to be affected in the event of an accidental discharge is at a depth of approximately 400 feet with a total dissolved solids concentration ranging from 1000 to 1700 mg/l. The discharge plan addresses how spills, leaks, and other accidental discharges to the surface will be managed.

Any interested person may obtain further information from the Oil Conservation Division and may submit written comments to the Director of the Oil Conservation Division at the address given above. The discharge plan application(s) may be viewed at the above address between 9:00 a.m. and 4:00 p.m., Monday through Friday. Prior to ruling on any proposed discharge plan application(s), the Director of the Oil Conservation Division shall allow at least thirty (30) days after the date of publication of this notice during which comments may be submitted and a public hearing may be requested by any interested person. Requests for a public hearing shall set forth the reasons why a hearing should be held. A hearing will be held if the Director determines there is significant public interest.

If no public hearing is held, the Director will approve or disapprove the proposed plan(s) based on information available. If a public hearing is held, the Director will approve or disapprove the proposed plan(s) based on the information in the discharge plan application(s) and information submitted at the hearing.

GIVEN under the Seal of New Mexico Oil Conservation Commission at Santa Fe, New Mexico, on this 26th day of May 1999.

**STATE OF NEW MEXICO  
OIL CONSERVATION  
DIVISION**

**LORI WROTENBERY,  
Director**

Legal #65487  
Pub. June 1, 1999

US Postal Service

**Receipt for Certified Mail**

No Insurance Coverage Provided.

Do not use for International Mail (See reverse)

Sent to	
<b>Lowington Daily Leader</b>	
Street & Number	
<b>P.O. Box 1717</b>	
Post Office & ZIP Code	
<b>Lowington, NM 88260</b>	
Postage	\$
Certified Fee	
Special Delivery Fee	
Restricted Delivery Fee	
Return Receipt Showing to Whom & Date Delivered	
Return Receipt Showing to Whom, Date, & Addressee's Address	
TOTAL Postage & Fees	\$
Postmark or Date	

PS Form 3800, April 1995

**NOTICE OF PUBLICATION**

**STATE OF NEW MEXICO  
OILS AND NATURAL RESOURCES DEPARTMENT  
OIL CONSERVATION DIVISION**

That pursuant to New Mexico Water Quality Control Commission discharge plan application(s) have been submitted to the Director of the 2040 South Pacheco, Santa Fe, New Mexico 87505, Telephone (505)

Gas Processing Company, Donald K. Judd, Agent, (915) North Colorado Street, Midland, Texas 79701-4696, has made a renewal application for the Denton Gas Plant located in Section 2, Township 15 South, Range 37 East, NMPM, Lea County, New Mexico. Approximately 750 gallons per day of process waste with a total dissolved solids concentration of approximately 2000 mg/l is currently being stored on site in closed storage tanks prior to disposal in

an OCD approved contract injection Class II well. Ground water most likely to be affected in the event of an accidental discharge is at a depth of approximately 40 feet with a total dissolved solids concentration ranging from 610 to 1600 mg/l. The discharge plan addresses how spills, leaks, and other accidental discharges to the surface will be managed.

(GW-311) - LG&E Natural Gathering and Processing, John R. Delaney, (505) 393-2153, 921 West Sanger Street, Hobbs, New Mexico 88240, has submitted a discharge application for the Cotton Draw Compressor Station located in the NE/4 NW/4 and the NW/4 NE/4 of Section 18, Township 25 South, Range 32 East, NMPM, Lea County, New Mexico. Approximately 30 barrels per day of waste water with a total dissolved solids concentration of approximately 10,000 mg/l will be collected in an above ground closed storage tank prior to removal and disposed of in an OCD approved facility. Ground water most likely to be affected in the event of an accidental discharge is at a depth of approximately 400 feet with a total dissolved solids concentration ranging from 1000 to 1700 mg/l. The discharge plan addresses how spills, leaks, and other accidental discharges to the surface will be managed.

Any interested person may obtain further information from the Oil Conservation Division and may submit written comments to the Director of the Oil Conservation Division at the address given above. The discharge plan application(s) may be viewed at the above address between 8:00 a.m. and 4:00 p.m., Monday through Friday. Prior to ruling on any proposed discharge plan application(s), the Director of the Oil Conservation Division shall allow at least thirty (30) days after the date of publication of this notice during which comments may be submitted and a public hearing may be requested by any interested person. Requests for a public hearing shall set forth the reasons why a hearing should be held. A hearing will be held if the Director determines there is significant public interest.

## **NOTICE OF PUBLICATION**

### **STATE OF NEW MEXICO ENERGY, MINERALS AND NATURAL RESOURCES DEPARTMENT OIL CONSERVATION DIVISION**

Notice is hereby given that pursuant to New Mexico Water Quality Control Commission Regulations, the following discharge plan application(s) have been submitted to the Director of the Oil Conservation Division, 2040 South Pacheco, Santa Fe, New Mexico 87505, Telephone (505) 827-7131:

**(GW-048) - Davis Gas Processing Company, Donald K. Judd, Agent, (915) 682-6311, 211 North Colorado Street, Midland, Texas 79701-4696, has submitted a discharge renewal application for the Denton Gas Plant located in the SE/4 of Section 2, Township 15 South, Range 37 East, NMPM, Lea County, New Mexico. Approximately 750 gallons per day of process waste water with a total dissolved solids concentration of approximately 2000 mg/l will be collected and stored on site in closed storage tanks prior to disposal in an OCD approved contract injection Class II well. Ground water most likely to be affected in the event of an accidental discharge is at a depth of approximately 40 feet with a total dissolved solids concentration ranging from 610 to 1600 mg/l. The discharge plan addresses how spills, leaks, and other accidental discharges to the surface will be managed.**

**(GW-311) - LG&E Natural Gathering and Processing, John R. Delaney, (505) 393-2153, 921 West Sanger Street, Hobbs, New Mexico 88240, has submitted a discharge application for the Cotton Draw Compressor Station located in the NE/4 NW/4 and the NW/4 NE/4 of Section 18, Township 25 South, Range 32 East, NMPM, Lea County, New Mexico. Approximately 30 barrels per day of waste water with a total dissolved solids concentration of approximately 10,000 mg/l will be collected in an above ground closed storage tank prior to removal and disposed of in an OCD approved facility. Ground water most likely to be affected in the event of an accidental discharge is at a depth of approximately 400 feet with a total dissolved solids concentration ranging from 1000 to 1700 mg/l. The discharge plan addresses how spills, leaks, and other accidental discharges to the surface will be managed.**

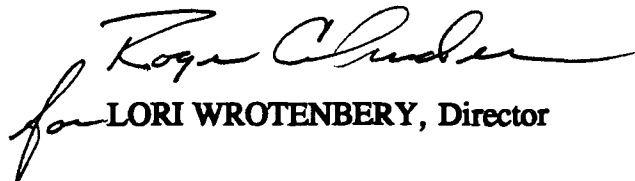
Any interested person may obtain further information from the Oil Conservation Division and may submit written comments to the Director of the Oil Conservation Division at the address given above. The discharge plan application(s) may be viewed at the above address between 8:00 a.m. and 4:00 p.m., Monday through Friday. Prior to ruling on any proposed discharge plan application(s), the Director of the Oil Conservation Division shall allow at least thirty (30) days after the date of publication of this notice during which comments may be submitted and a public hearing may be requested by any interested person. Requests for a public hearing shall set forth the reasons why a hearing should be held. A hearing will be held if the Director determines there is significant public interest.

If no public hearing is held, the Director will approve or disapprove the proposed plan(s) based on information available. If a public hearing is held, the Director will approve or disapprove the proposed plan(s) based on the information in the discharge plan application(s) and information submitted at the hearing.

GIVEN under the Seal of New Mexico Oil Conservation Commission at Santa Fe, New Mexico,  
on this 26th day of May 1999.

STATE OF NEW MEXICO  
OIL CONSERVATION DIVISION

S E A L

  
for LORI WROTENBERY, Director



**NEW MEXICO ENERGY, MINERALS  
& NATURAL RESOURCES DEPARTMENT**

OIL CONSERVATION DIVISION  
2040 South Pacheco Street  
Santa Fe, New Mexico 87505  
(505) 827-7131

April 22, 1999

**CERTIFIED MAIL**  
**RETURN RECEIPT NO. Z-357-870-081**

Mr. John R. Delaney  
LG&E Natural Gathering and Processing  
921 West Sanger  
Hobbs, New Mexico 88240

**RE: Discharge Plan GW-311  
Cotton Draw Compressor Station  
Lea County, New Mexico**

Dear Mr. Delaney:

The ground water discharge plan application, dated December 14, 1998, for GW-311 for the Cotton Draw Compressor Station located in the NE/4 NW/4 and NW/4 NE/4 of Section 18, Township 25 South, Range 32 East, NMPM, Lea County, New Mexico, was submitted without certain ground water information. Mr. Ed Sloman was notified via telephone on January 22, 1999 regarding the deficiency of the application and the required information. To date the information requested has not been received by the OCD. Processing of the application cannot be completed until such information is received. A delay of issuance of the discharge plan could result in the discontinuance of operations at this facility.

Your prompt attention to this request will be appreciated so processing of the application can be done in an expeditious manner. If you have any questions contact me at (505) 827-7156.

Sincerely,

W. Jack Ford, C.P.G., R.P.G.  
Water Resource Engineering Specialist  
Oil Conservation Division

xc: OCD Hobbs District Office

Z 357 870 081

US Postal Service

Receipt for Certified Mail

No Insurance Coverage Provided.

Do not use for International Mail (See reverse)

Sent to <i>John Delaney</i>	
Street & Number <i>LGFE</i>	
Post Office, State, & ZIP Code <i>Hobbs</i>	
Postage	\$
Certified Fee	
Special Delivery Fee	
Restricted Delivery Fee	
Return Receipt Showing to Whom & Date Delivered	
Return Receipt Showing to Whom, Date, & Addressee's Address	
TOTAL Postage & Fees	\$
Postmark or Date <i>GW-311</i>	

PS Form 3800 April 1995

ACKNOWLEDGEMENT OF RECEIPT  
OF CHECK/CASH

I hereby acknowledge receipt of check No. [REDACTED] dated 12-14-98,

or cash received on \_\_\_\_\_ in the amount of \$ 50.00

from Llano

for Cotton Draw C.S. GW-311

Submitted by: \_\_\_\_\_ Date: \_\_\_\_\_  
(Facility Name) (DP No.)

Submitted to ASD by: R. Chandra Date: 2/1/99

Received in ASD by: \_\_\_\_\_ Date: \_\_\_\_\_

Filing Fee X New Facility \_\_\_\_\_ Renewal \_\_\_\_\_

Modification \_\_\_\_\_ Other \_\_\_\_\_  
(specify)

Organization Code 521.07 Applicable FY 99

To be deposited in the Water Quality Management Fund.

Full Payment \_\_\_\_\_ or Annual Increment \_\_\_\_\_

LLANO, INC.

BOX 1320

HOBBS, NEW MEXICO 88240

SUNWEST BANK OF HOBBS, N.A.  
HOBBS, NEW MEXICO 88240

95-321  
1122

CHECK DATE	CHECK NO.
12-14-98	3183

CHECK AMOUNT
\$ 50.00

AY TO THE ORDER OF

Water Quality Management Fund

THE SUNWEST BANK OF HOBBS, N.A.

LLANO, INC. - GENERAL ACCOUNT

VOID AFTER 90 DAYS

100

[illegible]



# LLANO, INC.



INVOICE NO.	INVOICE DATE	DESCRIPTION	GROSS AMOUNT	DISCOUNT	NET AMOUNT
		Application Fee for Discharge Plan for Cotton Draw			
CHECK NUMBER		TOTALS ➤			\$50.00

## LLANO, INC.

BOX 1320  
HOBBS, NEW MEXICO 88240

SUNWEST BANK OF HOBBS, N.A.  
HOBBS, NEW MEXICO 88240

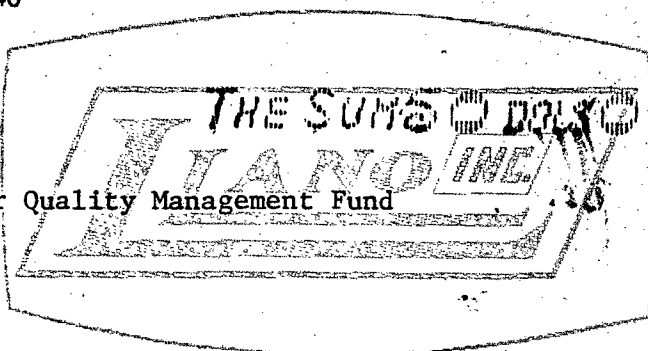


95-321  
1122

CHECK DATE	CHECK NO.
12-14-98	3183

PAY TO THE ORDER OF

Water Quality Management Fund



CHECK AMOUNT
\$ 50.00

LLANO, INC. - GENERAL ACCOUNT

*[Signature]*  
VOID AFTER 90 DAYS



State of New Mexico  
Energy, Minerals and Natural Resources Department  
OIL CONSERVATION DIVISION  
P.O. Box 2088  
Santa Fe, NM 87501

**DISCHARGE PLAN APPLICATION FOR NATURAL GAS PROCESSING PLANTS,  
OIL REFINERIES AND GAS COMPRESSOR STATIONS**

(Refer to OCD Guidelines for assistance in completing the application.)

GW-311

- I. TYPE: COMPRESSOR STATION
- II. OPERATOR: LG&E NATURAL GATHERING AND PROCESSING  
ADDRESS: 921 WEST SANGER, HOBBS, NM 88240  
CONTACT PERSON: ED SLOMAN PHONE: 505-393-2153
- III. LOCATION: NE/4 NW/4 & NW/4 NE/4 Section 18 Township 25S Range 32E  
Submit large scale topographic map showing exact location.
- IV. Attach the name and address of the landowner(s) of the disposal facility site.
- V. Attach description of the facility with a diagram indicating location of fences, pits, dikes, and tanks on the facility.
- VI. Attach a description of sources, quantities and quality of effluent and waste solids.
- VII. Attach a description of current liquid and solid waste transfer and storage procedures.
- VIII. Attach a description of current liquid and solid waste disposal procedures.
- IX. Attach a routine inspection and maintenance plan to ensure permit compliance.
- X. Attach a contingency plan for reporting and clean-up of spills or releases.
- XI. Attach geological/hydrological evidence demonstrating that disposal of oil field wastes will not adversely impact fresh water. Depth to and quality of ground water must be included.
- XII. Attach such other information as is necessary to demonstrate compliance with any other OCD rules, regulations and/or orders.
- XIII. CERTIFICATION

I hereby certify that the information submitted with this application is true and correct to the best of my knowledge and belief.

Name: JOHN R. DELANEY

Title: GENERAL MANAGER

Signature: 

Date: 12-14-98

DISTRIBUTION: Original and one copy to Santa Fe with one copy to appropriate Division District Office.

I.

The major purpose of this facility, The Cotton Draw Compressor Station, is to compress natural gas.

This compressor station will be a "Booster," station. We will take gas from one section of our pipeline gathering system, boost the pressure of the natural gas, and move the natural gas at a higher pressure to another section of our gathering pipeline system. To accomplish this goal we will be using one natural gas fired engine driven compressor of approximately 702 H. P.

*No Flat Fee*

At this facility we will have an inlet filter separator to the compressor station, and skid mounted scrubbers on the compressor itself. These scrubbers will remove free liquid from the inlet stream of natural gas before it is compressed. There will be a 210 bbl. Standard API closed tank, and two 100 bbl. Standard API closed tanks installed at this location. All of the fluids from the scrubbers and dehydrator will be piped into the 210 bbl. tank for storage. As the liquids separate into condensate and water, the water will be transferred to one of the 100 bbl. tanks. The tanks will be emptied into trucks as often as necessary, and transported to either market, or to a licensed disposal which ever is applicable. All fluids will be dealt with in an approved manner.

The fluids caught from the compressor skid from wash down water, and rain water will be piped into the other 100 bbl. tank. This tank will not be connected to the other two tanks.

II.

The Owner/Operator of this facility will be:  
LG&E Natural Gathering and Processing Co.  
921 West Sanger  
Hobbs, New Mexico 88240

Mr. J. R. Delaney  
General Manager; Operations and Construction  
921 West Sanger  
Hobbs, New Mexico 88240

(505) 393-2153

III.

Location: NE/4 NW/4 & NW/4 NE/4 : Section 18, Township 25 S, Range 32E,  
NMPM, Lea County, New Mexico:

Attached please find a copy of the topographic map showing the location of the  
compressor station.

IV.

According to the Rights - of - Way documents the land owner for this property is:

United States  
Department Of The Interior  
Bureau Of Land Management

RDO - Carlsbad Resources Area

see attached Survey Plot:  
Rights - of - way is applied for and pending:

V. Facility Description:

This compressor station, The Cotton Draw Compressor Station, consist of one natural gas engine driven natural gas compressor. The station will have a station inlet filter separator, and there are scrubbers for the compressor mounted on the compressor skid. There will be a measurement station on the outlet side of this station, measuring the natural gas before it leaves the compressor station. This compressor will be compressing natural gas from the west side of our gathering system, boosting the pressure and sending the natural gas east, north east down our gathering system. There will be three tanks set at this facility. There will be one 210 bbl. closed steel API tank which the scrubbers and dehydrator will dump into. There will be two 100 bbl. steel API tanks set, one of which, will be a produced water tank. The purpose of this 100 bbl. tank is to transfer the water from the 210 bbl. tank to the 100 bbl. tank for proper management of the fluids. The water will be trucked from location and disposed of in an approved manner at a permitted facility. The condensate left in the 210 bbl. tank will be sold to a company of choice as a product of this facility. There will be a blow case system installed at this location. The blow case system will have the drains from the compressor skid piped into it. This blow case will be piped to the other 100 bbl API steel tank. This will collect the wash down fluids, and rain water caught from the compressor skid. This tank will not be connected to the other tanks at this facility. The liquids from this tank will be trucked from location as often as necessary to an approved facility, and disposed of in an approved manner.

The natural gas enters this station from a single pipeline, is compressed, measured and is discharged through a single pipeline. The design of this station is simply a booster compressor station.

## **VI. Sources, Quantities, & Quality of Effluent & Waste Solids:**

- 1. Engine Cooling Water -** The engine driving the compressor contains approximately 150 gallons of a 50% Norkool, 50% water mixture for cooling purposes. This is a closed loop system and normally required no make-up.
- 2. Separators -** Each scrubber, the station inlet, and each of the two scrubbers which are skid mounted on the compressor, will remove an estimated 0 to 30 bbl. of liquid per day, condensate & produced water, depending on the ambient conditions, and other factors involved.
- 3. Waste Lubrication Oils-** The compressor contains approximately 10 gallons of lubricating oil, and the engine contains approximately 62 gallons of lubrication oil. The lubrication oil is a standard 30 or 40 weight oil and is replaced approximately every 5000 hours of run time, or as required by oil analysis.
- 4. Used Oil Filters-** Used oil filters will be properly drained, and will be stored in a receptacle on location for this purpose. Our engine oil vendor will collect the filters and will dispose of them in an approved manner.
- 5. The liquids caught from the environmental skid of the compressor will be piped to a separate 100 bbl. tank. This tank will not be connected to the other tanks for proper management of the waste streams.**

The produced water and hydrocarbon liquids will be commingled within the facility. Individual rates, volumes and concentrations should not vary beyond the ranges identified above. All Process units will be self-contained to prevent unintentional or inadvertent discharges and spills.



## VII. Transfer & Storage of Process Fluid & Effluents

Produced water and hydrocarbon liquid are collected in the scrubbers. The produced water and hydrocarbon liquids are commingled and piped to a closed storage tank. (see attached facility schematic).

Each of the scrubbers and separators are pressurized vessels. The closed storage tank will be maintained at atmospheric pressure. There will be a 100 bbl. steel API storage tank which will be utilized for storage of produced water.

The condensate storage tank is a standard API 210 bbl. tank. The tank is constructed above ground level. The 100 bbl. tanks are constructed above ground level. These tanks will have an earthen dike enclosure to provide secondary containment equal to one-third greater than the tank capacity. The containment area will have an impermeable barrier installed to prevent contamination of soils.

Waste lubrication oil will be collected in a mobile tank provided for the purpose of oil changes. This used lubrication oil is collected, and relinquished to a licensed oil reclaiming facility for proper recycling and handling of the used lubrication oil. This used lubrication oil and filters will be handled through our oil vendor.

The compressor will be set on an "environmental" base. This base will provide a guttering system which will keep any rain water from running off of the equipment and onto the ground. This guttering system will be piped to a blow case system. This blow case system will be piped to our other 100 bbl. storage tank. These liquids will be stored separately from our "produced" liquids and the tanks will not be connected for proper management of the fluids.

## VIII.

This is not a disposal site for EFFLUENT Liquid.

As previously stated, the purpose of this site is to compress natural gas. There will be some produced water, and condensate which will be recovered from the natural gas. These liquids will be stored in a 210 Bbl. and a 100 Bbl. tank, and will be hauled from location. The produced water will be disposed of by a trucking company, either Rowland Trucking, or AA Oilfield Service. Both of these companies have approved disposal wells which they use, and charge us for the disposal of the produced water.

The condensate will be sold to a refinery. The refinery of choice will be elected by price, and they will pick up the condensate from the storage tank and transport it to their facility.

The used engine lubricants, and filters will be handled by our compressor vendor. The Compressor is owned by LG & E Natural and all maintenance required on this unit will be performed by our compressor maintenance department.

The storage tanks will be set on an impermeable barrier, and monitored by our operators on a daily bases. Our operators will be reporting to their supervisor by mobile communications if this tank should need any further attention. Our supervisors have the means to order a truck to haul liquid at the time our operator's report to him. With this type of check, and safety check, there should be no ground water contamination to contend with.

Simply stated, if the liquid is contained in the tanks, then it cannot contaminate the ground, or ground water.

IX.

This facility will have an operator which will check the operations of the facility on a daily bases. The operator will report the functioning of the compressors, and a log will be kept of the units. If the operator should locate any problem in any of the equipment, what-so-ever, he will report the problem to his supervisor. Each operator is equipped with mobile communications, which is monitored 24 hours a day.

In the event of a "reportable spill", the operator would notify his supervisor immediately of the occurrence. The supervisor would in turn notify his immediate supervisor, and our emergency report and operating plan would be implemented.

Fluids will be collected inside pressure vessels. These vessels will be ASME stamped, approved, pressure vessels. Therefore, no precipitation can be collected in them.

The compressor unit has an "environmental" skid, which will not allow precipitation which has contacted this unit to runoff onto the ground. The new unit skid will be piped into a blow case system which will transfer all fluids to an above ground storage tank. As previously stated the contents of these tanks will be hauled by truck as often as necessary to assure proper levels are maintained.

The blow case system will be piped to a separate tank for management of fluids. The drain lines will be tested at least once every five years to assure OCD compliance.

X.

Our contingency plan for cleaning up spills, and reporting same is not complicated. We have a supervisor on call who is available 24 hours a day. There are administrative support supervisors available when ever needed.

If a spill should occur, the supervisor on duty would start the field operations of the clean-up, by first stopping the source of the spill, and containing all fluids that he possibly can. The on duty supervisor would notify the support people of the situation. The OCD would be notified pursuant to rule 116, and a contractor would be dispatched at that time to start clean up. The land owner would be notified, and all measures would be taken to protect his live-stock, as well as any wild animals.

All clean up would be carried out in an approved manner, and all necessary waste would be dealt with accordingly .



December 16, 1998

Bureau of Land Management  
Carlsbad Resource Area  
620 E Greene Street  
Carlsbad, NM 88220-6292

Attn: Ms. Bobbe Young

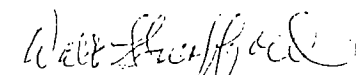
Re: R/W Grant NM-101420  
"Cotton Draw" Compressor Station  
HGPP Project 1221  
SIMO ID #85-0161831

Gentlemen:

Enclosed are two (2) duly executed copies of the grant and check No. 56081 in the amount of \$325.00 representing payment of the initial rental charges for NM-101420 for the term beginning December 1998 thru December 31, 1999.

Very truly yours,

HADSON GAS GATHERING & PROCESSING CO.

  
Walter L. Swafford  
Right-of-Way

encl:

LG&E NATURAL GATHERING &  
PROCESSING CO.

INVOICE NO.	DATE	REFERENCE	GROSS AMOUNT	DEDUCTIONS	NET AMOUNT
CKRQ1298	12/14/98	Rental ROW "COTTON DRAW" COMPRESSOR STATION PROJECT 1221	\$325.00		\$325.00
			CHECK TOTAL	\$325.00	\$325.00

THIS CHECK IS PRINTED ON CHEMICAL REACTIVE PAPER WHICH CONTAINS A WATERMARK. HOLD UP TO A LIGHT TO VIEW.

**LG&E**  
**Natural**

LG&E NATURAL GATHERING & PROCESSING CO.  
2777 STEMMONS FWY., SUITE 700  
DALLAS, TEXAS 75207

DATE	CHECK NUMBER
12/14/98	

CHECK AMOUNT
**\$325.00**

\*\*THREE HUNDRED TWENTY FIVE DOLLARS AND NO/100th\*\*

PAY TO THE ORDER OF

Department of Interior - BLM

Payable through  
Mellon Bank (DE) N.A., Wilmington, DE 19899  
Mellon Bank (East) N.A., Philadelphia, PA 19102  
62-42111

LG&E NATURAL  
GATHERING & PROCESSING CO.

*John C. Loh*

VOID AFTER 90 DAYS FROM DATE



# United States Department of the Interior

## BUREAU OF LAND MANAGEMENT

Carlsbad Field Office  
P. O. Box 1778  
620 E. Greene  
Carlsbad, New Mexico 88220  
(505) 887-6544

IN REPLY REFER TO:  
NM-101420  
2800 (080) bky

DEC 14 1998

Hadson Gas Gathering & Processing  
Right-of-Way Department  
921 W. Sanger  
Hobbs, NM 88241

RE: Right-of-Way  
NM-101420  
Proj. 1221, Cotton Draw Site

Gentlemen:

On December 8, 1998, you filed a right-of-way application for a compressor site location, across Federal land.

Before the grant can be issued, your authorized officer must execute page two of both copies of the grant and return each, with enclosures, to this office for signature by the BLM authorized officer.

Rental charges have been computed on your right-of-way application. The rental and other charges shown below should be remitted with the signed copies of the grant at your earliest convenience. Failure to return the documents and payment in a timely manner could result in denial of your application.

Date of Grant to December 31, 1998	\$ 25.00
Plus One Year's Rental	\$300.00 (\$300.00 per year)
Total Rental Due	\$325.00

The Bureau of Land Management reserves the right to update the rental charges whenever necessary to reflect changes in the Implicit Price Deflator GNP. The next rental date will be January 1, 2000.

Sincerely,

*Timothy P. O'Brien*  
Acting Manager  
Carlsbad Field Office



UNITED STATES  
DEPARTMENT OF THE INTERIOR  
BUREAU OF LAND MANAGEMENT

RECEIPT AND ACCOUNTING ADVICE

NO. 2409321

Subject: R/W Application -- compressor site  
Cotton Draw

EAlman:Carlsbad Field Office, NM  
12/8/98 5102-77 \$150.00

Applicant:

Hudson Gas Gathering  
Right-of-Way Department  
921 W. Sanger  
Hobbs, NM 88241

Remitter: Ck. #03180

Assignor:

SERIAL NO.
NM-101420

REFER TO THE ABOVE CASE SERIAL NUMBER IN ALL CORRESPONDENCE. PLEASE INFORM THIS OFFICE OF ANY CHANGE IN ADDRESS.

NOTE: This notice is a receipt for monies paid the United States. If these monies are for required fees in connection with your application to lease, purchase, enter, or otherwise acquire an interest in public lands or resources, this receipt is not an authorization to utilize the land applied for and it does not convey any right, title, or interest in the land for which application is made.



December 4, 1998

Bureau of Land Management  
Carlsbad Resource Area  
620 E. Greene Street  
Carlsbad, NM 88220-6292

Attn: Ms. Bobbe Young

Re: Application for Right-of-Way  
Project 1221  
"Cotton Draw" Compressor Station  
SIMO ID #85-0161831

Gentlemen:

Hadson Gas Gathering & Processing Co., a New Mexico Corporation, hereby applies under the authority of Section 28 of the Minerals Leasing Act of 1920, as amended. (3 USC 185) for a Right-of-Way to be granted across public land for:

A 200 ft. x 275 ft. (1.624 acres) tract for the purpose of installing natural gas compressor including all related piping, measurement equipment, gas scrubbers, dehydration equipment, liquid hydrocarbon storage and other related equipment. This facility is required to provide lower in pipeline operating pressures on a segment of our pipeline system thereby facilitating the production of natural gas connected to said system.

In support of our request, we submit the following for your consideration:

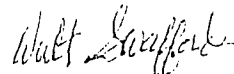
- Check No. 03180 in the amount of \$150.00 representing payment of the application processing fee.
- Duly executed Standard Form 299 (10-87).
- Five (5) copies of the certified plat(s) of survey.

The Archaeological Clearance Survey has been completed and submitted to your office (PAC Report No 98070).

Anything you can to expedite this request will be greatly appreciated. Do not hesitate to call me should you have any questions and/or need any additional information.

Very truly yours,

HADSON GAS GATHERING & PROCESSING CO.

  
Walter L. Swafford  
Right of Way

encl.

# LLANO, INC.

INVOICE NO.	INVOICE DATE	DESCRIPTION	GROSS AMOUNT	DISCOUNT	NET AMOUNT
		Right of Way Application Fee "Cotton Draw" Compressor Station Project P1221			
CHECK NUMBER	TOTALS				\$150.00

**LLANO, INC.**

BOX 1320  
HOBBS, NEW MEXICO 88240

SUNWEST BANK OF HOBBS, N.A.  
HOBBS, NEW MEXICO 88240

95-321  
1122

CHECK DATE	CHECK NO.
12-3-98	3180

*THE SUM IS 150 DOLLARS*

PAY TO THE ORDER OF

Department of Interior-BLM

CHECK AMOUNT
\$ 150.00

LLANO, INC. - GENERAL ACCOUNT

*Walter L Swafford*

VOID AFTER 90 DAYS

# APPLICATION FOR TRANSPORTATION AND UTILITY SYSTEMS AND FACILITIES ON FEDERAL LANDS

FORM APPROVED  
OMB NO. 1004-0060  
Expires: May 31, 1989

## FOR AGENCY USE ONLY

Application Number

Date filed

NOTE: Before completing and filing the application, the applicant should completely review this package and schedule a preapplication meeting with representatives of the agency responsible for processing the application. Each agency may have specific and unique requirements to be met in preparing and processing the application. Many times, with the help of the agency representative, the application can be completed at the preapplication meeting.

1. Name and address of applicant (include zip code)

HADSON GAS GATHERING & PROCESSING CO.  
921 W. SANGER  
HOBBS, NEW MEXICO 88240

2. Name, title, and address of authorized agent if different from Item 1 (include zip code)

3. TELEPHONE (area code)

Applicant

505-393-2153

Authorized Agent

4. As applicant are you? (check one)

- a. ☐ Individual  
b. ☒ Corporation \*  
c. ☐ Partnership/Association \*  
d. ☐ State Government/State Agency  
e. ☐ Local Government  
f. ☐ Federal Agency

\* If checked, complete supplemental page

5. Specify what application is for: (check one)

- a. ☒ New authorization  
b. ☐ Renew existing authorization No. \_\_\_\_\_  
c. ☐ Amend existing authorization No. \_\_\_\_\_  
d. ☐ Assign existing authorization No. \_\_\_\_\_  
e. ☐ Existing use for which no authorization has been received \*  
f. ☐ Other \*

\* If checked, provide details under Item 7

6. If an individual, or partnership are you a citizen(s) of the United States? ☐ Yes ☐ No

7. Project description (describe in detail): (a) Type of system or facility, (e.g., canal, pipeline, road); (b) related structures and facilities; (c) physical specifications (length, width, grading, etc.); (d) term of years needed; (e) time of year of use or operation; (f) Volume or amount of product to be transported; (g) duration and timing of construction; and (h) temporary work areas needed for construction. (Attach additional sheets, if additional space is needed.)

- A) NATURAL GAS COMPRESSOR STATION.  
B) RELATED PIPING AND EQUIPMENT.  
C) 1.62 ACRE TRACT ON FEDERAL LANDS  
D) 30 YEARS  
E) CONSTANT YEAR ROUND USE.  
F) INITIAL FLOW ESTIMATED AT 7 MMSCFD DESIGN FOR 10 MMSCFD  
@ 175 PSI - 750 PSI. (1000 PSI MAX.)  
G) CONSTRUCTION TO START UPON RECEIPT OF R/W.  
H) TEMPORARY WORK AREA NOT REQUIRED.

8. Attach map covering area and show location of project proposal

9. State or local government approval: ☐ Attached ☐ Applied for ☒ Not required10. Nonreturnable application fee: ☒ Attached ☐ Not required11. Does project cross international boundary or affect international waterways? ☐ Yes ☒ No (If "yes," indicate on map)

12. Give statement of your technical and financial capability to construct, operate, maintain, and terminate system for which authorization is being requested.

HADSON GAS GATHERING & PROCESSING CO., A NEW MEXICO CORPORATION, OWNS AND OPERATES A NATURAL GAS PIPELINE AND IS A WHOLLY OWNED SUBSIDIARY OF HADSON GAS SERVICES, INC., A DELAWARE CORPORATION, AND IS A WHOLLY OWNED SUBSIDIARY OF LG&E ENERGY CORP., A KENTUCKY CORPORATION WHICH IS LISTED ON THE NEW YORK STOCK EXCHANGE.

13a. Describe other reasonable alternative routes and modes considered.

LOCATION DICTATED BY EXISTING FACILITIES.

b. Why were these alternatives not selected?

SEE 13A

c. Give explanation as to why it is necessary to cross Federal lands.

SEE 13A

14. List authorizations and pending applications filed for similar projects which may provide information to the authorizing agency. (*Specify number, date, code, or name.*)

SEE R/W NM 94801

15. Provide statement of need for project, including the economic feasibility and items such as: (a) cost of proposal (*construction, operation, and maintenance*); (b) estimated cost of next best alternative; and (c) expected public benefits.

- A) ESTIMATED COST 150,000.00
- B) NO ALTERNATIVE

16. Describe probable effects on the population in the area, including the social and economic aspects, and the rural lifestyles.

THIS PROPOSED ACTION IS LOCATED IN SPARSELY POPULATED RANCHING AREA.  
NEAREST RESIDENCE IS APPROXIMATELY 3.0 MILES FROM LOCATION OF PROPOSED ACTION.

17. Describe likely environmental effects that the proposed project will have on: (a) air quality; (b) visual impact; (c) surface and ground water quality and quantity; (d) the control or structural change on any stream or other body of water; (e) existing noise levels; and (f) the surface of the land, including vegetation, permafrost, soil, and soil stability.

- A) TEMPORARY INCREASE IN DUST B) MINIMAL IMPACT WITH NO RESIDUAL EFFECTS AFTER R/W REVEGETATES IN 2 TO 3 YEARS. C) NO EFFECT D) NO EFFECT E) INCREASE IN NOISE LEVELS
- F) TEMPORARY LOSS OF VEGETATION R/W WILL BE RESEED AT TIME OF SITE RECLAMATION.

18. Describe the probable effects that the proposed project will have on: (a) populations of fish, plant, wildlife, and marine life, including threatened and endangered species; and (b) marine mammals, including hunting, capturing, collecting, or killing these animals.

- A) NONE
- B) NONE

19. Name all the Department(s)/Agency(ies) where this application is being filed.

BUREAU OF LAND MANAGEMENT  
CARLSBAD RESOURCE AREA  
CARLSBAD, NEW MEXICO

I HEREBY CERTIFY, That I am of legal age and authorized to do business in the State and that I have personally examined the information contained in the application and believe that the information submitted is correct to the best of my knowledge.

Signature of Applicant

*Walter L. Smalley*

Date

*12-4-98*

Title 18, U.S.C. Section 1001, makes it a crime for any person knowingly and willfully to make to any department or agency of the United States any false, fictitious, or fraudulent statements or representations as to any matter within its jurisdiction.

APPLICATION FOR TRANSPORTATION AND UTILITY SYSTEMS  
AND FACILITIES ON FEDERAL LANDS

GENERAL INFORMATION  
ALASKA NATIONAL INTEREST LANDS

This application will be used when applying for a right-of-way, permit, license, lease, or certificate for the use of Federal lands which lie within conservation system units and National Recreation or Conservation Areas as defined in the Alaska National Interest Lands Conservation Act. Conservation system units include the National Park System, National Wildlife Refuge System, National Wild and Scenic Rivers System, National Trails System, National Wilderness Preservation System, and National Forest Monuments.

Transportation and utility systems and facility uses for which the application may be used are:

1. Canals, ditches, flumes, laterals, pipes, pipelines, tunnels, and other systems for the transportation of water.
2. Pipelines and other systems for the transportation of liquids other than water, including oil, natural gas, synthetic liquid and gaseous fuels, and any refined product produced therefrom.
3. Pipelines, slurry and emulsion systems, and conveyor belts for transportation of solid materials.
4. Systems for the transmission and distribution of electric energy.
5. Systems for transmission or reception of radio, television, telephone, telegraph, and other electronic signals, and other means of communications.
6. Improved rights-of-way for snow machines, air cushion vehicles, and all-terrain vehicles.
7. Roads, highways, railroads, tunnels, tramways, airports, landing strips, docks, and other systems of general transportation.

This application *must* be filed simultaneously with each Federal department or agency requiring authorization to establish and operate your proposal.

In Alaska, the following agencies will help the applicant file an application and identify the other agencies the applicant should contact and possibly file with:

Department of Agriculture  
Regional Forester, Forest Service (USFS)  
Federal Office Building, P.O. Box 21628  
Juneau, Alaska 99802-1628  
Telephone: (907) 586-7847 (or a local Forest Service Office)

Department of Interior  
Bureau of Indian Affairs (BIA)  
Juneau Area Office, P.O. Box 3-8000  
Juneau, Alaska 99802  
Telephone: (907) 586-7144

Bureau of Land Management (BLM)  
701 C Street, Box 13  
Anchorage, Alaska 99513  
Telephone: (907) 271-5477 (or a local BLM Office)

National Park Service (NPS)  
Alaska Regional Office, 2525 Gambell St., Rm 107  
Anchorage, Alaska 99503  
Telephone: (907) 261-2690

U.S. Fish & Wildlife Service (FWS)  
Office of the Regional Director  
1011 East Tudor Road  
Anchorage, Alaska 99503  
Telephone: (907) 786-3440

Note-Filings with any Interior agency may be filed with any office noted above or with the: Office of the Secretary of the Interior, Regional Environmental Officer, Box 120, 1675 C Street, Anchorage, Alaska 99513.

Department of Transportation  
Federal Aviation Administration  
Alaska Region AAL-4, P.O. 14  
Anchorage, Alaska 99513

NOTE - The Department of Transportation has established the above central filing point for agencies within that Department. Affected agencies are: Federal Aviation Administration (FAA), Coast Guard (USCG), Federal Highway Administration (FHWA), Federal Railroad Administration (FRA).

OTHER THAN ALASKA NATIONAL INTEREST LANDS

Use of this form is not limited to National Interest Conservation Lands of Alaska.

Individual departments/agencies may authorize the use of this form by applicants for transportation and utility systems and facilities on other Federal lands outside those areas described above.

For proposals located outside of Alaska, applications will be filed at the local agency office or at a location specified by the responsible Federal agency.

SPECIFIC INSTRUCTIONS  
(Items not listed are self-explanatory)

Item

- 7 Attach preliminary site and facility construction plans. The responsible agency will provide instructions whenever specific plans are required.
- 8 Generally, the map *must* show the section(s), township(s), and range(s) within which the project is to be located. Show the proposed location of the project on the map as accurately as possible. Some agencies require detailed survey maps. The responsible agency will provide additional instructions.
- 9, 10, and 12 - The responsible agency will provide additional instructions.
- 13 Providing information on alternate routes and modes in as much detail as possible, discussing why certain routes or modes were rejected and why it is necessary to cross Federal lands will assist the agency(ies) in processing your application and reaching a final decision. Include only reasonable alternate routes and modes as related to current technology and economics.
- 14 The responsible agency will provide instructions.
- 15 Generally, a simple statement of the purpose of the proposal will be sufficient. However, major proposals located in critical or sensitive areas may require a full analysis with additional specific information. The responsible agency will provide additional instructions.
- 16 through 18 - Providing this information in as much detail as possible will assist the Federal agency(ies) in processing the application and reaching a decision. When completing these items, you should use sound judgment in furnishing relevant information. For example, if the project is not near a stream or other body of water, *do not* address this subject. The responsible agency will provide additional instructions.

Application *must* be signed by the applicant or applicant's authorized representative.

If additional space is needed to complete any item, please put the information on a separate sheet of paper and identify it as "Continuation of Item".

SUPPLEMENTAL

NOTE: The responsible agency(ies) will provide additional instructions.		CHECK APPROPRIATE BLOCK	
I - PRIVATE CORPORATIONS		ATTACHED	FILED *
a. Articles of Incorporation		<input type="checkbox"/>	<input checked="" type="checkbox"/>
b. Corporation Bylaws		<input type="checkbox"/>	<input checked="" type="checkbox"/>
c. A certification from the State showing the corporation is in good standing and is entitled to operate within the State.		<input type="checkbox"/>	<input checked="" type="checkbox"/>
d. Copy of resolution authorizing filing		<input type="checkbox"/>	<input checked="" type="checkbox"/>
e. The name and address of each shareholder owning 3 percent or more of the shares, together with the number and percentage of any class of voting shares of the entity which such shareholder is authorized to vote and the name and address of each affiliate of the entity together with, in the case of an affiliate controlled by the entity, the number of shares and the percentage of any class of voting stock of that affiliate owned, directly or indirectly, by that entity, and in the case of an affiliate which controls that entity, the number of shares and the percentage of any class of voting stock of that entity owned, directly or indirectly, by the affiliate.	SEE 12	<input type="checkbox"/>	<input checked="" type="checkbox"/>
f. If application is for an oil or gas pipeline, describe any related right-of-way or temporary use permit applications, and identify previous applications.		<input type="checkbox"/>	<input checked="" type="checkbox"/>
g. If application is for an oil and gas pipeline, identify all Federal lands by agency impacted by proposal.		<input type="checkbox"/>	<input checked="" type="checkbox"/>
II - PUBLIC CORPORATIONS			
a. Copy of law forming corporation		<input type="checkbox"/>	<input type="checkbox"/>
b. Proof of organization		<input type="checkbox"/>	<input type="checkbox"/>
c. Copy of Bylaws		<input type="checkbox"/>	<input type="checkbox"/>
d. Copy of resolution authorizing filing		<input type="checkbox"/>	<input type="checkbox"/>
e. If application is for an oil or gas pipeline, provide information required by Item "I-f" and "I-g" above.		<input type="checkbox"/>	<input type="checkbox"/>
III - PARTNERSHIP OR OTHER UNINCORPORATED ENTITY			
a. Articles of association, if any		<input type="checkbox"/>	<input type="checkbox"/>
b. If one partner is authorized to sign, resolution authorizing action is		<input type="checkbox"/>	<input type="checkbox"/>
c. Name and address of each participant, partner, association, or other		<input type="checkbox"/>	<input type="checkbox"/>
d. If application is for an oil or gas pipeline, provide information required by Item "I-f" and "I-g" above.		<input type="checkbox"/>	<input type="checkbox"/>

\* If the required information is already filed with the agency processing this application and is current, check block entitled "Filed." Provide the file identification information (e.g., number, date, code, name). If not on file or current, attach the requested information.

REFER TO NM-93881

**NOTICE**

The Privacy Act of 1974 provides that you be furnished the following information in connection with information required by this application for an authorization.

AUTHORITY: 16 U.S.C. 310; 5 U.S.C. 301.

PRINCIPLE PURPOSE: The information is to be used to process the application.

ROUTINE USES: (1) The processing of the applicant's request for an authorization. (2) Documentation for public information. (3) Transfer to appropriate Federal agencies when concurrence is required prior to granting a right in public lands or resources. (4)(5) Information from the record and/or the record will be transferred to appropriate Federal, State, local or foreign agencies, when relevant to civil, criminal or regulatory investigations or prosecutions.

**EFFECT OF NOT PROVIDING INFORMATION:** Disclosure of the information is voluntary. If all the information is not provided, the application may be rejected.

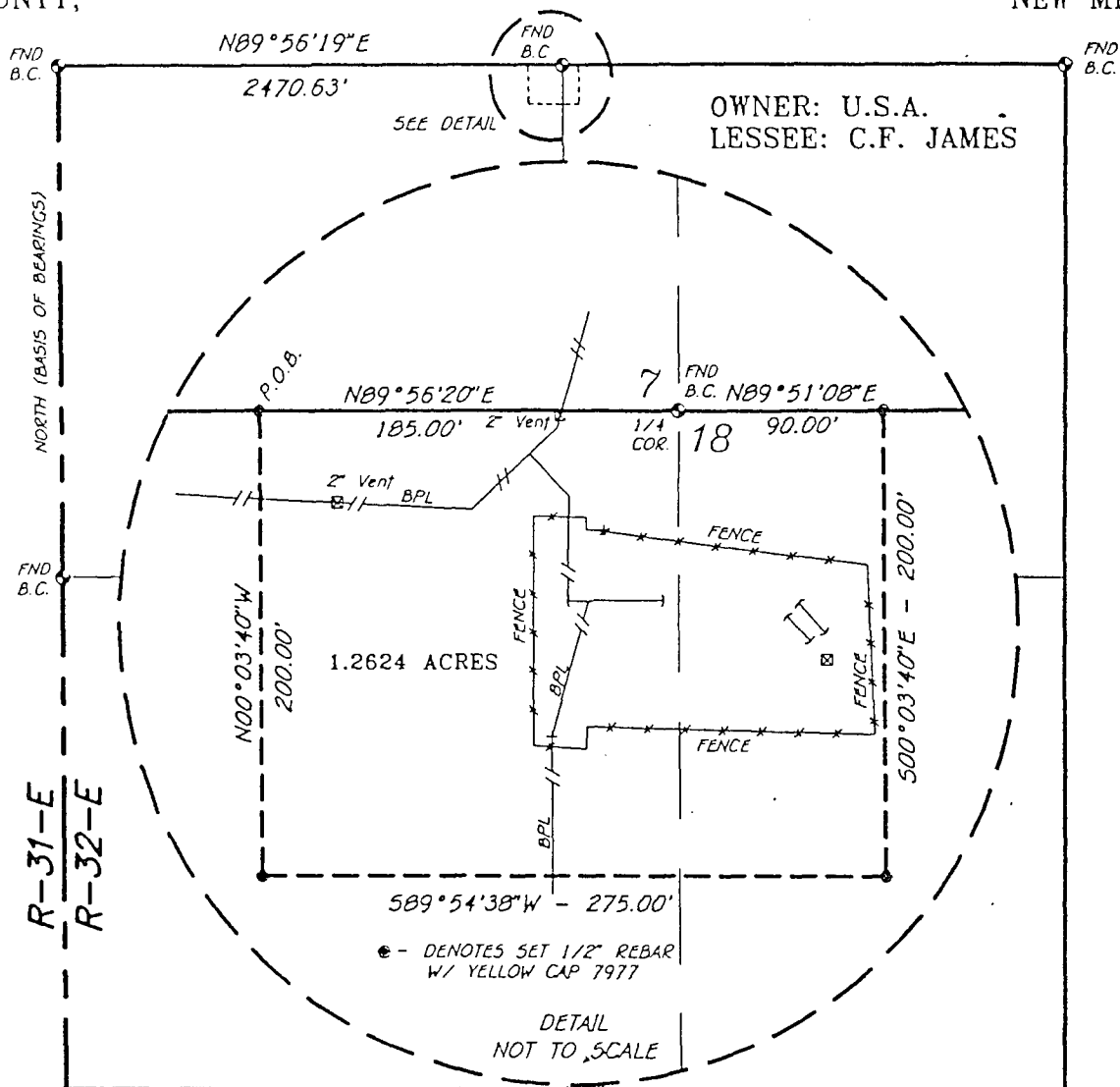
**DATA COLLECTION STATEMENT**

The Federal agencies collect this information from applicants requesting right-of-way, permit, license, lease, or certification for the use of Federal lands.

The Federal agencies use this information to evaluate the applicant's proposal.

The public is obligated to submit this form if they wish to obtain permission to use Federal lands.

SECTION 18, TOWNSHIP 25 SOUTH, RANGE 32 EAST, N.M.P.M.,  
LEA COUNTY, NEW MEXICO.



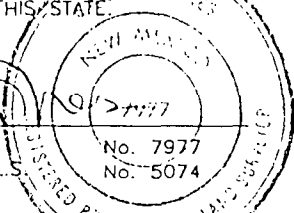
LEGAL DESCRIPTION

A TRACT OF LAND LOCATED IN SECTION 18, TOWNSHIP 25 SOUTH, RANGE 32 EAST, N.M.P.M., LEA COUNTY, NEW MEXICO AND BEING MORE PARTICULARLY DESCRIBED AS FOLLOWS.

BEGINNING AT A POINT WHICH LIES N.89°56'20\"E, 2470.63 FEET FROM THE NORTHWEST CORNER OF SAID SECTION 18; THENCE N.89°56'20\"E. ALONG THE NORTH SECTION LINE, A DISTANCE OF 185.00 FEET TO A POINT BEING THE NORTH QUARTER CORNER OF SAID SECTION 18; THENCE N.89°51'08\"E. ALONG THE NORTH SECTION LINE, A DISTANCE OF 90.00 FEET; THENCE S.00°03'40\"E., 200.00 FEET; THENCE S.89°54'38\"W., 275.00 FEET; THENCE N.00°03'40\"W., 200.00 FEET TO THE POINT OF BEGINNING. SAID TRACT OF LAND CONTAINING 1.2624 ACRES, MORE OR LESS.

I HEREBY CERTIFY THAT THIS PLAT WAS PREPARED FROM FIELD NOTES OF AN ACTUAL SURVEY AND MEETS OR EXCEEDS ALL REQUIREMENTS FOR LAND SURVEYS AS SPECIFIED BY THIS STATE.

GARY L. JONES N.M. P.S.  
TEXAS P.L.S.



**BASIN SURVEYS** P.O. BOX 1786 HOBBS, NEW MEXICO

W.O. Number: 8486

Drawn By: K. GOAD

Date: 11-06-98

Disk: KJG #119 - HAD8486A.DWG

1000 0 1000 2000

**HADSON GAS GATHERING AND PROCESSING**

REF: 200'x275' TRACT / PROJ. 1221

A TRACT OF LAND LOCATED IN  
SECTION 18, TOWNSHIP 25 SOUTH, RANGE 32 EAST,  
N.M.P.M., LEA COUNTY, NEW MEXICO.

Survey Date: 11-05-98

Sheet 1 of 1 Sheets