

1R - 85

REPORTS

DATE:

2006

**2005
ANNUAL MONITORING REPORT**

RED BYRD #1

SE ¼ NE ¼, SECTION 1, TOWNSHIP 20 SOUTH, RANGE 36 EAST
LEA COUNTY, NEW MEXICO
PLAINS EMS NUMBER: TNM RED BYRD #1
NMOCD REFERENCE NUMBER 1R-0085

PREPARED FOR:

PLAINS MARKETING, L.P.

333 Clay Street, Suite 1600
Houston, Texas 77002

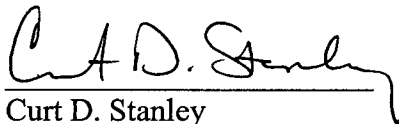


PREPARED BY:

NOVA Safety and Environmental

2057 Commerce Street
Midland, Texas 79703

March 2006


Curt D. Stanley
Project Manager



Todd K. Choban, P.G.
Vice President Technical Services

TABLE OF CONTENTS

INTRODUCTION.....	1
SITE DESCRIPTION AND BACKGROUND INFORMATION	1
FIELD ACTIVITIES.....	2
LABORATORY RESULTS.....	3
SUMMARY.....	4
ANTICIPATED ACTIONS	4
LIMITATIONS	4
DISTRIBUTION.....	5

FIGURES

Figure 1 – Site Location Map

Figure 2A – Inferred Groundwater Gradient Map March 18, 2005

2B – Inferred Groundwater Gradient Map June 16, 2005

2C – Inferred Groundwater Gradient Map September 16, 2005

2D – Inferred Groundwater Gradient Map December 15, 2005

Figure 3A – Groundwater Concentration and Inferred PSH Extent Map March 18, 2005

3B – Groundwater Concentration and Inferred PSH Extent Map June 16, 2005

3C – Groundwater Concentration and Inferred PSH Extent Map September 16, 2005

3D – Groundwater Concentration and Inferred PSH Extent Map December 15, 2005

TABLES

Table 1 – 2005 Groundwater Elevation Data

Table 2 – 2005 Concentrations of BTEX in Groundwater

APPENDICES

Appendix A – Release Notification and Corrective Action (Form C-141)

ENCLOSED ON DATA DISK

2005 Annual Monitoring Report

2005 Tables 1 and 2 – Groundwater Elevation and BTEX Concentration Data

2005 Figures 1, 2A-2D, 3A-3D

Laboratory Reports

Historic Groundwater Elevation Data Tables

Historic BTEX Concentration Tables

INTRODUCTION

On behalf of Plains Marketing, L.P. (Plains), NOVA Safety and Environmental (NOVA) is pleased to submit this Annual Monitoring Report in compliance with the New Mexico Oil Conservation Division (NMOCD) letter of May 1998, requiring submittal of an Annual Monitoring Report by April 1 of each year. Beginning on May 29, 2004, project management responsibilities were assumed by NOVA, having previously been managed by Environmental Technology Group, Inc (ETGI). The Red Byrd #1 site, which was formally the responsibility of Texas New Mexico Pipeline Company (TNM), is now the responsibility of Plains. The Release Notification and Corrective Action (Form C-141) is provided as Appendix A. This report is intended to be viewed as a complete document with text, figures, tables and appendices. The report presents the results of the quarterly groundwater monitoring events conducted in calendar year 2005 only. However, historic data tables as well as 2005 laboratory analytical reports are provided on the enclosed data disk. A site location map is provided as Figure 1.

Groundwater monitoring was conducted during each quarter of 2005 to assess the levels and extent of dissolved phase constituents and Phase Separated Hydrocarbon (PSH). The groundwater monitoring events consisted of measuring static water levels in the monitor wells, checking for the presence of PSH and purging and sampling of each well exhibiting sufficient recharge. Monitor wells containing a thickness of PSH greater than 0.01 foot were not sampled.

SITE DESCRIPTION AND BACKGROUND INFORMATION

The site is located approximately four miles southwest of the town of Monument, New Mexico in the SE 1/4 of the NE 1/4 of Section 1, Township 20 South, Range 36 East. Evidence of a historical release was brought to the attention of Link Energy (formerly EOTT who acquired the pipeline from TNM in 1999), by Mr. Red Byrd in January 2000.

Approximately 8,900 cubic yards of impacted soil was excavated, shredded and blended with nutrients. Approximately 3,700 cubic yards of impacted soil was transported to Plains Lea Station to be used as berm material. Upon completion of excavation activities, confirmation soil samples were collected from the excavation and stockpiles. Review of analytical results indicated soil samples collected from the excavation to be below NMOCD regulatory standards. The excavation was backfilled with the blended soil and approximately 3,500 cubic yards of topsoil was transported onsite and the area was contoured to topographic grade. In early 2000, seven (7) monitor wells were installed by a previous consultant and in November 2004, five (5) additional monitor wells were installed.

Manual product recovery is conducted weekly at wells having measurable thicknesses of product. Approximately 376 gallons (8 barrels) of product has been recovered by manual recovery since project inception. All wells are currently sampled on a quarterly basis.

FIELD ACTIVITIES

Measurable thicknesses of PSH, all less than 0.02 feet were detected in monitor wells MW-1*, MW-2, MW-3*, and MW-5* during the 2005 reporting period. Monitor wells MW-1 through MW-5 exhibited a sheen throughout the 2005 reporting period. Monitor wells MW-6, MW-8, MW-9 and MW-12 exhibited a sheen during at least one sampling event during the 2005 reporting period. No measurable PSH was recovered from the Red Byrd #1 release site during the reporting period.

Quarterly monitoring events for the reporting period were performed according to the following sampling schedule, which was approved by the NMOCD in correspondence dated April 28, 2004 and confirmed by NMOCD correspondence dated June 22, 2005.

NMOCD APPROVED SAMPLING SCHEDULE					
Location	Schedule	Location	Schedule	Location	Schedule
MW-1	Quarterly	MW-5	Quarterly	MW-9	Quarterly
MW-2	Quarterly	MW-6	Quarterly	MW-10	Quarterly
MW-3	Quarterly	MW-7	Quarterly	MW-11	Quarterly
MW-4	Quarterly	MW-8	Quarterly	MW-12	Quarterly

The site monitor wells were gauged and sampled on March 18, June 16, September 16 and December 15, 2005. During each sampling event, sampled monitor wells were purged of approximately three well volumes of water or until the wells were dry using a PVC bailer or electrical Grundfos Pump. Groundwater was allowed to recharge and samples were obtained using disposable Teflon samplers. Water samples were collected in clean glass containers provided by the laboratory and placed on ice in the field. Purge water was collected in a polystyrene tank and disposed of by Key Energy, Lovington, New Mexico utilizing a licensed disposal facility (NMOCD AO SWD-730).

Locations of the monitor wells and the inferred groundwater gradient, which were constructed from measurements collected during the four (4) quarterly monitoring events, are depicted on Figures 2A through 2D, the Inferred Groundwater Gradient Maps. Groundwater elevation data for 2005 is provided as Table 1. Historic groundwater elevation data beginning at project inception is provided on the enclosed data disk.

The most recent Groundwater Gradient Map, Figure 2D, indicates a general gradient of approximately 0.002 feet/foot to the southeast as measured between monitor well MW-2 and MW-11. This is consistent with data presented from earlier in the year. The corrected groundwater elevation has ranged between 3531.74 and 3536.33 feet above mean sea level, MW-2 on January 4, 2005 and MW-8 on December 2, 2005, respectively.

On November 5-6 2004, five additional monitor wells were installed to further delineate the extent of impacted groundwater at the site. Currently, a total of 12 monitor wells are located on site.

** Gauging data collected for these monitor wells indicates a measurable PSH thickness, which appears to be incongruous based on prior and subsequent data and historical trends*

LABORATORY RESULTS

Monitor wells MW-1* and MW-5* reportedly contained PSH during the first quarter sampling event and were not sampled. Monitor well MW-3 reportedly contained PSH during the fourth quarter sampling event and was not sampled.

Groundwater samples obtained during the quarterly sampling events of 2005 were delivered to TraceAnalysis, Inc. in Lubbock, Texas for determination of Benzene, Toluene, Ethylbenzene and Xylene (BTEX) constituent concentrations by EPA Method 8021b. A listing of BTEX constituent concentrations for 2005 is summarized in Table 2. Copies of the laboratory reports generated for 2005 are provided on the enclosed data disk. The quarterly groundwater sample results for benzene and BTEX constituent concentrations are depicted on Figures 3A through 3D.

Review of laboratory analytical results generated from analysis of the groundwater samples obtained during the first quarter 2005 sampling event indicates benzene concentrations in all sampled wells, with the exception of monitor wells MW-4 and MW-7 were above the NMOCD regulatory standard. Monitor wells MW-1* and MW-5* were not sampled in the first quarter due to a measurable thickness of PSH in the monitor wells. Total BTEX constituent concentrations were below the NMOCD regulatory standard in all monitor wells during the first quarter of 2005.

Analytical results of samples collected during the second quarter sampling event indicates all monitor wells exhibited benzene concentrations in excess of the NMOCD regulatory standard. Total BTEX constituent concentrations were above the NMOCD regulatory standard in monitor wells MW-2 and MW-5 during the second quarter of 2005.

Analytical results of samples collected during the third quarter sampling event indicates all monitor wells, with the exception of monitor well MW-7, exhibited benzene concentrations in excess of the NMOCD regulatory standard. Total BTEX constituent concentrations were above the NMOCD regulatory standard in monitor wells MW-1 only.

Analytical results of samples collected during the fourth quarter sampling event indicates all monitor wells, with the exception of monitor wells MW-8 and MW-11, exhibited benzene concentrations in excess of the NMOCD regulatory standard. Monitor well MW-3* was not sampled due to PSH in the monitor well. Total BTEX constituent concentrations were below the NMOCD regulatory standard in all monitor wells.

Laboratory analytical results were compared to NMOCD regulatory limits based on the New Mexico groundwater standards found in section 20.6.2.3103 of the New Mexico Administrative Code.

** Gauging data collected for these monitor wells indicates a measurable PSH thickness, which appears to be incongruous based on prior and subsequent data and historical trends*

SUMMARY

This report presents the results of monitoring activities for the annual monitoring period of 2005. Currently, there are twelve (12) groundwater monitor wells (MW-1 through MW-12) on-site. The most recent Groundwater Gradient Map, Figure 2B, indicates a general gradient of approximately 0.002 feet/foot to the southeast.

Measurable thicknesses of PSH (all less than 0.02 feet) were detected in four (4) monitor wells during the 2005 reporting period. Five (5) monitor wells exhibited a sheen throughout the 2005 reporting period. No measurable PSH was recovered from the Red Byrd #1 release site during the reporting period. Approximately 376 gallons (8 barrels) of product has been recovered by manual recovery since project inception.

Review of laboratory analytical results generated from analysis of the groundwater samples obtained during the 2005 monitoring period indicates the benzene concentration were above the NMOCD regulatory standard in all monitor wells at least two of the four quarters of the reporting period.

ANTICIPATED ACTIONS

Groundwater monitoring and annual reporting will continue in 2006. The analytical results of the five groundwater monitor wells installed in November 2004 indicate that additional horizontal delineation is required. A proposal to install six (6) additional monitor wells will be submitted to the NMOCD in the first quarter of 2006. Pending NMOCD approval, Plains anticipates commencing drilling of these additional monitor wells in the first quarter of 2006.

LIMITATIONS

NOVA has prepared this Annual Monitoring Report to the best of its ability. No other warranty, expressed or implied, is made or intended.

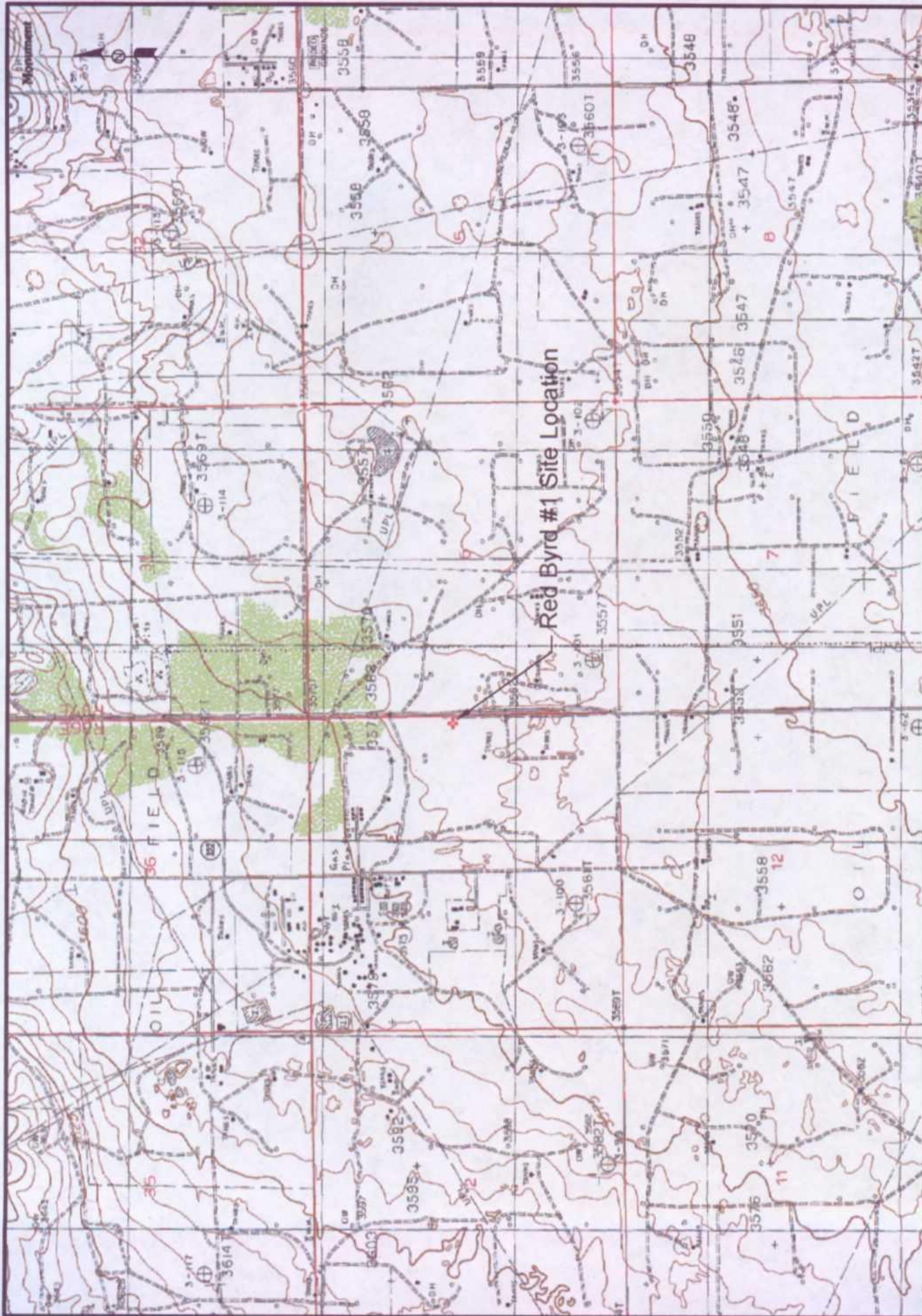
NOVA has examined and relied upon documents referenced in the report and has relied on oral statements made by certain individuals. NOVA has not conducted an independent examination of the facts contained in referenced materials and statements. We have presumed the genuineness of the documents and that the information provided in documents or statements is true and accurate. NOVA has prepared this report, in a professional manner, using the degree of skill and care exercised by similar environmental consultants. NOVA also notes that the facts and conditions referenced in this report may change over time and the conclusions and recommendations set forth herein are applicable only to the facts and conditions as described at the time of this report.

This report has been prepared for the benefit of Plains. The information contained in this report, including all exhibits and attachments, may not be used by any other party without the express consent of NOVA and/or Plains.

DISTRIBUTION

- Copy 1 Ed Martin
New Mexico Energy, Minerals and Natural Resources Department
Oil Conservation Division
1220 South St. Francis Drive
Santa Fe, NM 87505
- Copy 2: Larry Johnson and Paul Sheeley
New Mexico Energy, Minerals and Natural Resources Department
Oil Conservation Division, District 1
1625 French Drive
Hobbs, NM 88240
- Copy 3: Camille Reynolds
Plains Marketing, L.P.
3112 Highway 82
Lovington, NM
cjreynolds@paalp.com
- Copy 4: Jeff Dann
Plains Marketing, L.P.
333 Clay Street
Suite 1600
Houston, TX 77002
jpdann@paalp.com
- Copy 5: NOVA Safety and Environmental
2057 Commerce Street
Midland, TX 79703
cstanley@novatraining.cc

Figures



Red Byrd #1 Site Location

Figure 1

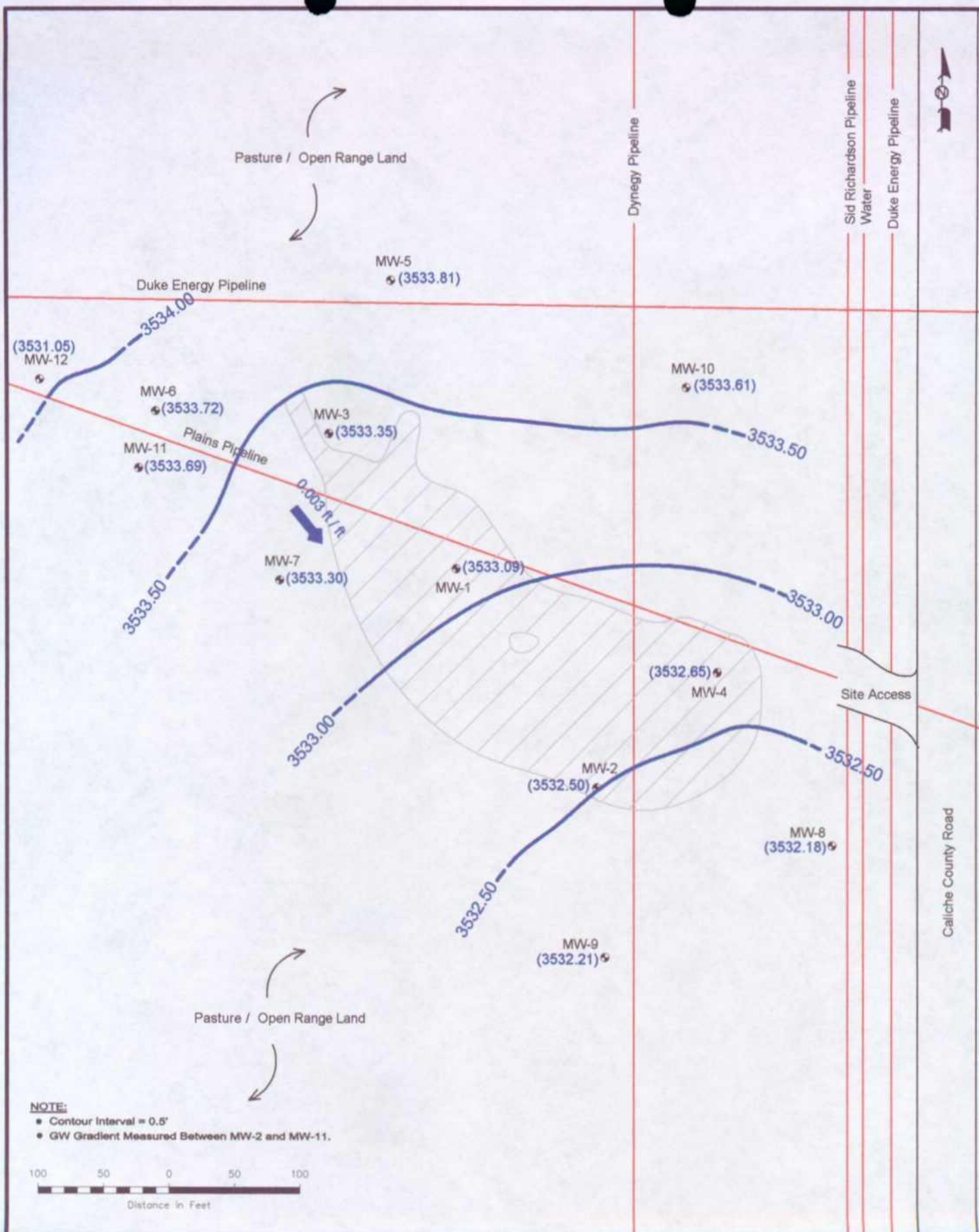
Site Location Map

Plains Marketing, L.P.
Red Byrd No. 1
Lea County, NM

NOVA Safety and Environmental

Scale: 1" = 1 Mile
Prep By: CDD
Checked By: TNC
February 22, 2000





Legend:

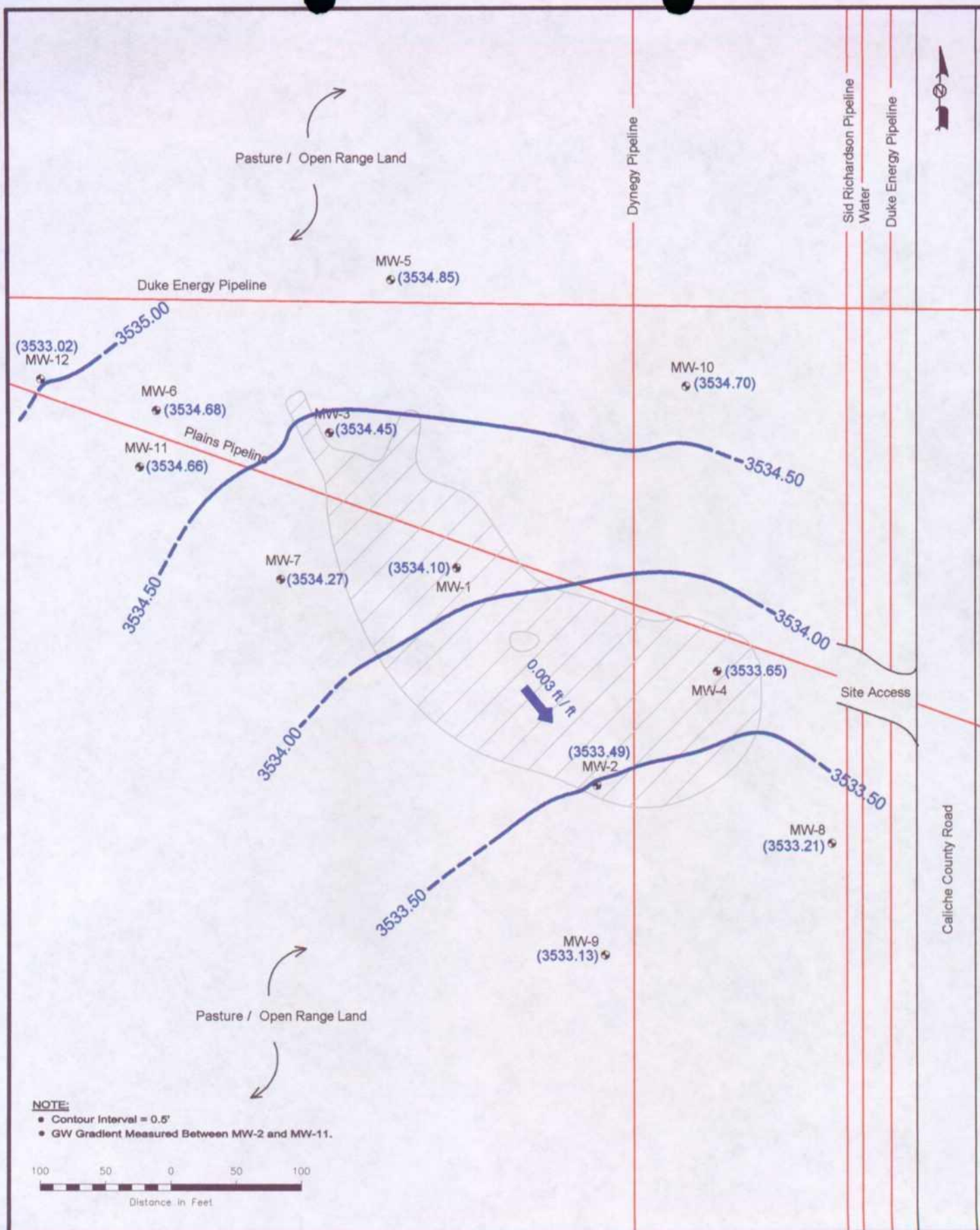
- Monitor Well Location
- Pipeline
- Groundwater Gradient Contour Line
- Groundwater Elevation (feet)
- Groundwater Gradient Direction and Magnitude
- Area previously excavated and backfilled by other consultants

Figure 2A
Inferred Ground Water
Gradient Map (3/18/05)
Plains Marketing, L.P.
Red Byrd No. 1
Lea County, NM

NOVA Safety and Environmental



SE 1/4 NE 1/4 Sec 1 T20S R08E 32° 36' 09.2"N 103° 17' 56.9"W
Scale: 1" = 100' Prep By: DPM Checked By: CDS
March 14, 2006



Legend:

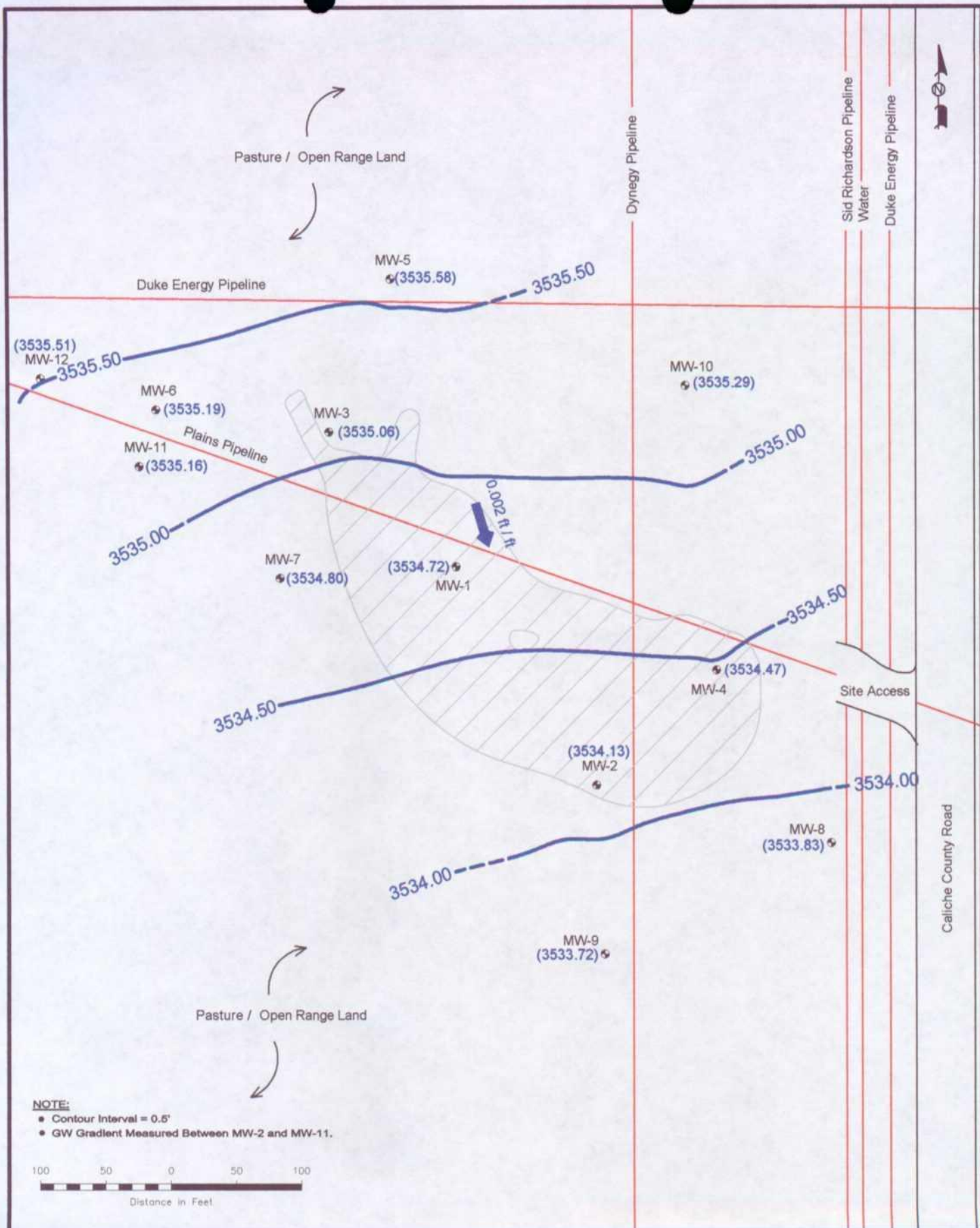
- Monitor Well Location
- Pipeline
- Groundwater Gradient Contour Line
- Groundwater Elevation (feet)
- Groundwater Gradient Direction and Magnitude
- Area previously excavated and backfilled by other consultants

Figure 2B
Inferred Ground Water
Gradient Map (8/18/05)
Plains Marketing, L.P.
Red Byrd No. 1
Lea County, NM

NOVA Safety and Environmental



SE 1/4 NE 1/4 Sec 1 T20S R36E 32° 30' 00.2"N 103° 17' 56.9"W
Scale: 1" = 100' Prep By: DPM Checked By: CDS
March 14, 2006



Legend:

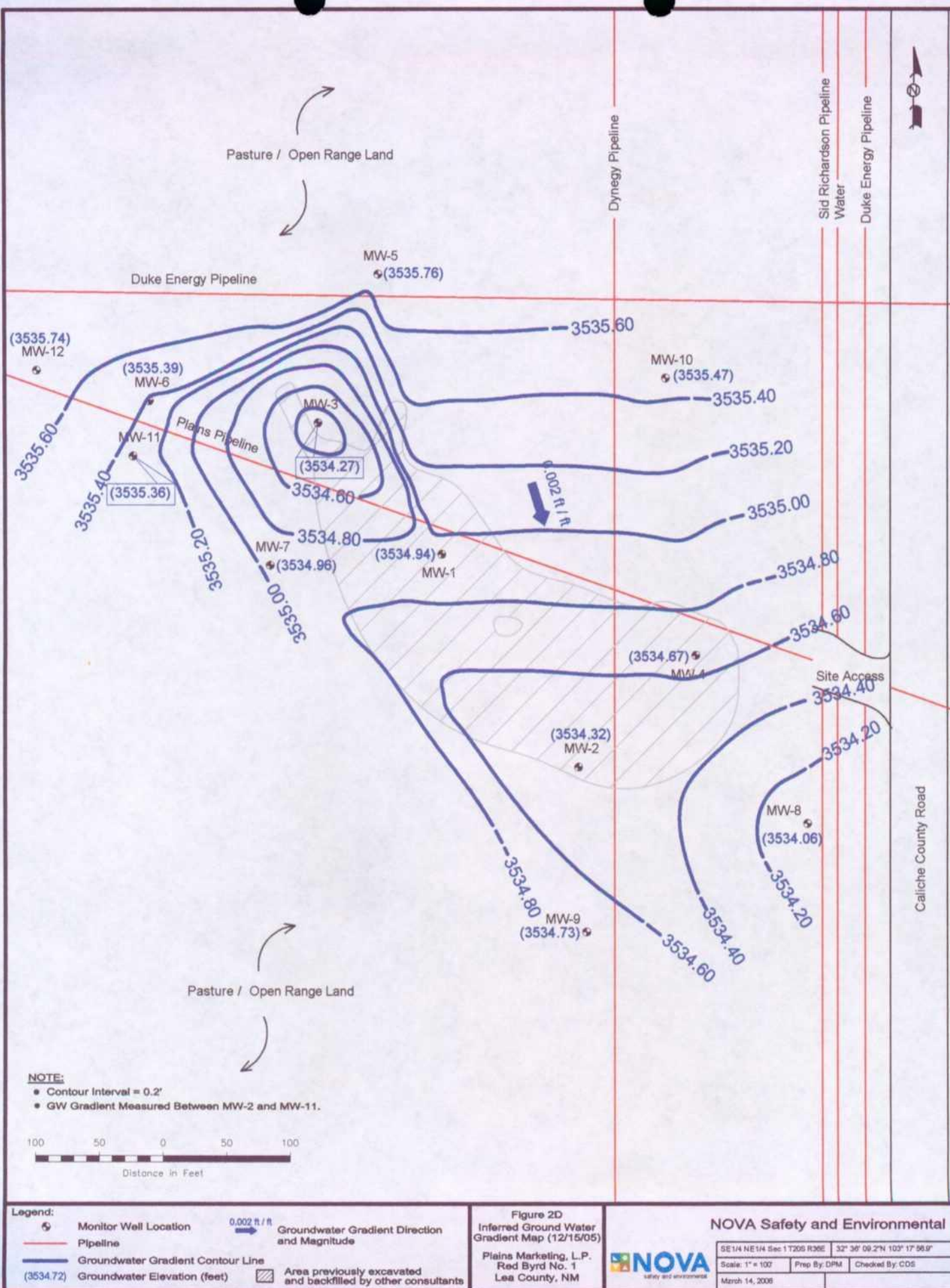
- Monitor Well Location
- Pipeline
- Groundwater Gradient Contour Line
- Groundwater Elevation (feet)
- Groundwater Gradient Direction and Magnitude
- Area previously excavated and backfilled by other consultants

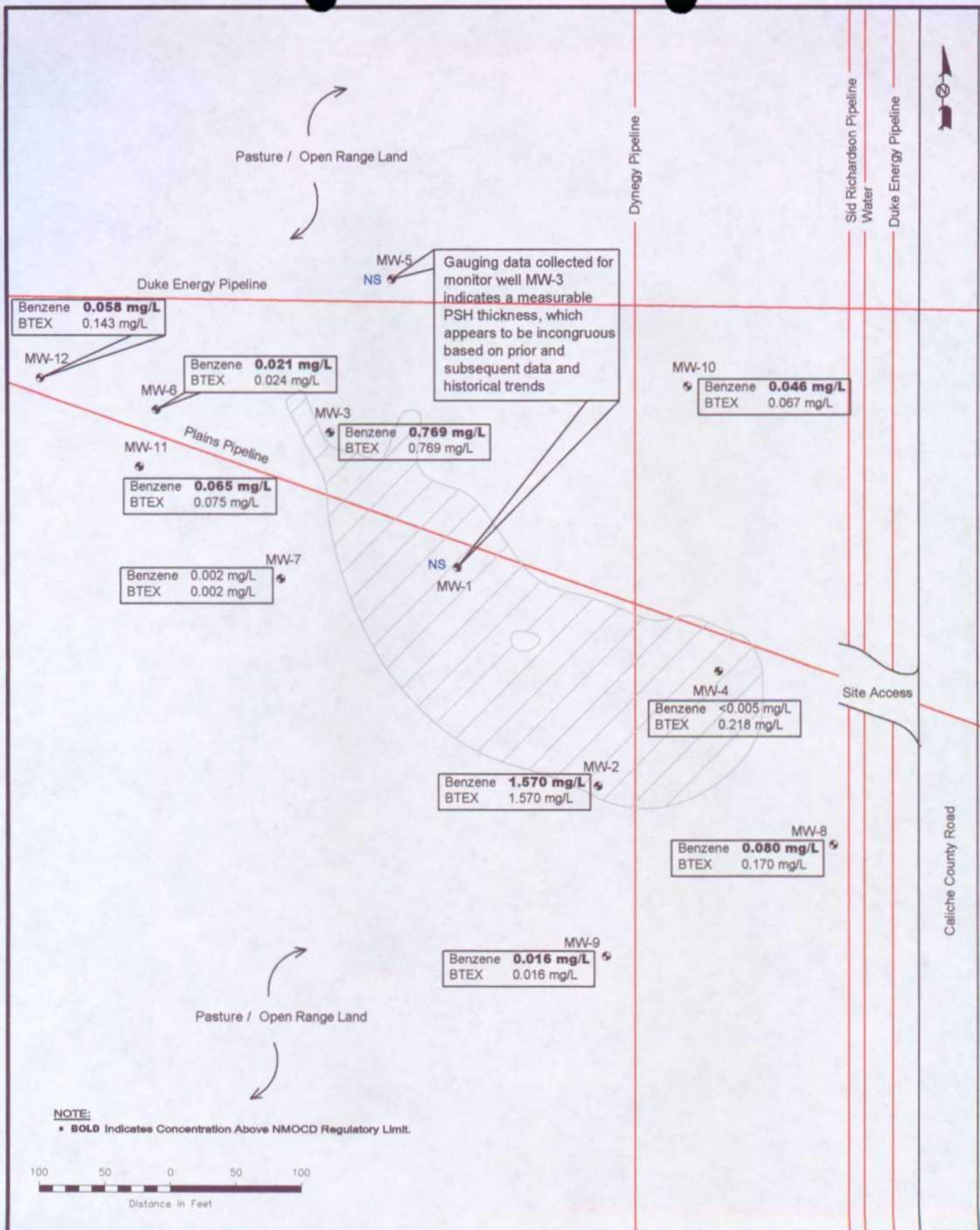
Figure 2C
Inferred Ground Water
Gradient Map (9/16/05)
Plains Marketing, L.P.
Red Byrd No. 1
Lea County, NM

NOVA Safety and Environmental



SE 1/4 NE 1/4 Sec 1 T20S R36E 32° 36' 09.2"N 103° 17' 56.9"W
Scale: 1" = 100' Prep By: DPM Checked By: CDS
March 14, 2006





Legend:

- ☒ Monitor Well Location
- Pipeline
- Inferred PSH Extent
- <0.001 Constituent Concentration (mg/L)
- 0.01' Thickness of PSH (feet)
- ▨ Area previously excavated and backfilled by other consultants

Figure 3A
Groundwater Concentration
and Inferred PSH Extent Map
(3/18/05)
Plains Marketing, L.P.
Red Byrd No. 1
Lea County, NM

NOVA Safety and Environmental



SE1/4 NE1/4 Sec 1 T20S R30E 32° 36' 00.2"N 103° 17' 56.8"W
Scale: 1" = 100' Prep By: DPM Checked By: CDS
March 14, 2006

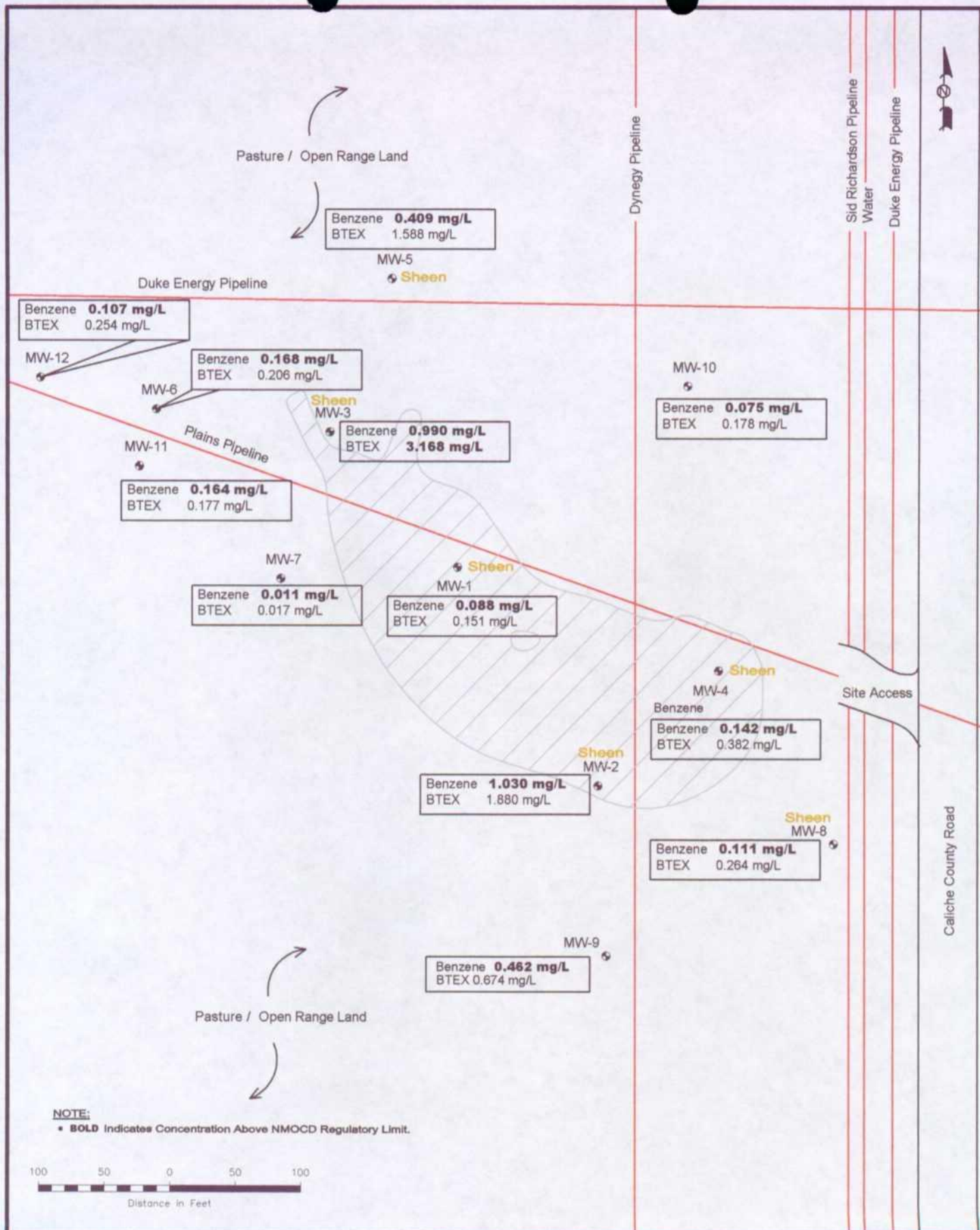


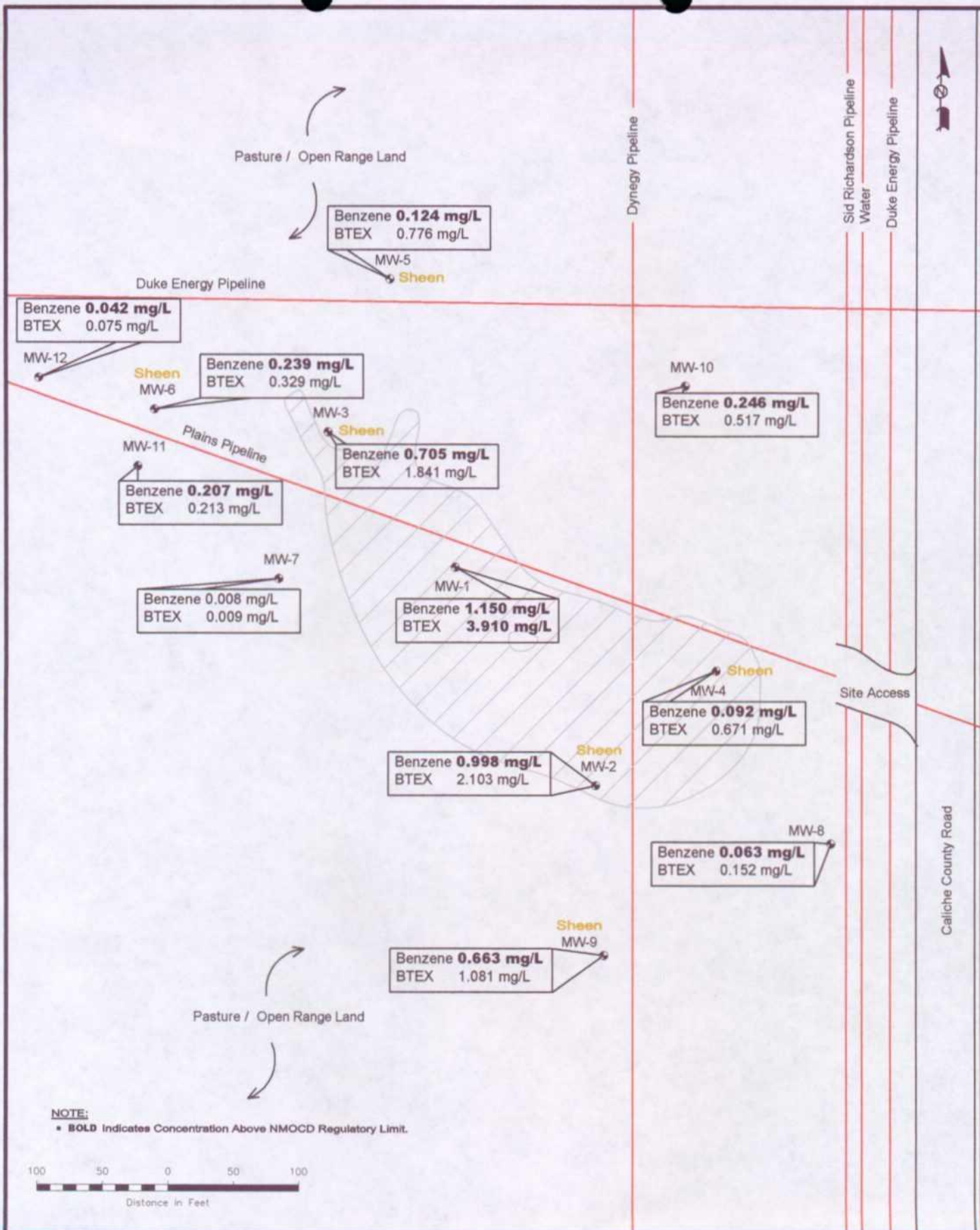
Figure 3B
Groundwater Concentration
and Inferred PSH Extent Map
(8/16/05)

Plains Marketing, L.P.
Red Byrd No. 1
Lea County, NM

NOVA Safety and Environmental

SE1/4 NE1/4 Sec 1 T20S R30E 32° 38' 09.2"N 103° 17' 50.9"E
Scale: 1" = 100' Prep By: DPM Checked By: CDS
March 14, 2006





Legend:

- Monitor Well Location
- Pipeline
- Inferred PSH Extent
- <0.001 Constituent Concentration (mg/L)
- Area previously excavated and backfilled by other consultants

Figure 3C
Groundwater Concentration
and Inferred PSH Extent Map
(9/18/05)
Plains Marketing, L.P.
Red Byrd No. 1
Lea County, NM

NOVA Safety and Environmental



SE 1/4 NE 1/4 Sec 1 T20N R30E 32° 36' 09.2"N 103° 17' 56.0"
Scale: 1" = 100' Prep By: CPM Checked By: CDE
March 14, 2006

Tables

TABLE 1

2005 GROUNDWATER ELEVATION DATA

PLAINS MARKETING, L.P.
RED BYRD 1
LEA COUNTY, NEW MEXICO

WELL NUMBER	DATE MEASURED	TOP OF CASING ELEVATION	DEPTH TO PRODUCT	DEPTH TO WATER	PSH THICKNESS	CORRECTED GROUND WATER ELEVATION
MW-1	01/04/05	3,567.59	35.41	35.42	0.01	3,532.18
	01/12/05	3,567.59	sheen	35.33	0.00	3,532.26
	01/19/05	3,567.59	sheen	35.25	0.00	3,532.34
	01/26/05	3,567.59	sheen	35.19	0.00	3,532.40
	02/01/05	3,567.59	sheen	35.16	0.00	3,532.43
	02/09/05	3,567.59	sheen	35.06	0.00	3,532.53
	02/16/05	3,567.59	sheen	34.97	0.00	3,532.62
	02/23/05	3,567.59	sheen	34.90	0.00	3,532.69
	03/02/05	3,567.59	sheen	34.73	0.00	3,532.86
	03/09/05	3,567.59	sheen	34.70	0.00	3,532.89
	03/17/05	3,567.59	sheen	34.67	0.00	3,532.92
*	03/18/05	3,567.59	34.50	34.52	0.02	3,533.09
	03/23/05	3,567.59	sheen	34.46	0.00	3,533.13
	03/30/05	3,567.59	sheen	34.37	0.00	3,533.22
	04/06/05	3,567.59	sheen	34.34	0.00	3,533.25
	04/14/05	3,567.59	sheen	34.25	0.00	3,533.34
	05/26/05	3,567.59	sheen	33.76	0.00	3,533.83
	06/16/05	3,567.59	sheen	33.49	0.00	3,534.10
	06/22/05	3,567.59	sheen	33.48	0.00	3,534.11
	07/28/05	3,567.59	sheen	33.16	0.00	3,534.43
	08/11/05	3,567.59	sheen	32.99	0.00	3,534.60
	08/25/05	3,567.59	sheen	32.94	0.00	3,534.65
	09/13/05	3,567.59	sheen	32.82	0.00	3,534.77
	09/16/05	3,567.59	-	32.87	0.00	3,534.72
*	09/30/05	3,567.59	32.76	32.77	0.01	3,534.83
	10/11/05	3,567.59	sheen	32.80	0.00	3,534.79
	10/28/05	3,567.59	sheen	32.76	0.00	3,534.83
	11/17/05	3,567.59	sheen	32.69	0.00	3,534.90
	12/02/05	3,567.59	sheen	32.61	0.00	3,534.98
	12/15/05	3,567.59	-	32.65	0.00	3,534.94
	12/30/05	3,567.59	sheen	32.62	0.00	3,534.97
MW-2	01/04/05	3,567.55	35.81	35.82	0.01	3,531.74
	01/12/05	3,567.55	sheen	35.74	0.00	3,531.81
	01/19/05	3,567.55	sheen	35.68	0.00	3,531.87
	01/26/05	3,567.55	sheen	35.59	0.00	3,531.96
	02/01/05	3,567.55	sheen	35.61	0.00	3,531.94
	02/09/05	3,567.55	sheen	35.47	0.00	3,532.08
	02/16/05	3,567.55	sheen	35.39	0.00	3,532.16
	02/23/05	3,567.55	sheen	35.29	0.00	3,532.26
	03/02/05	3,567.55	sheen	35.18	0.00	3,532.37
	03/09/05	3,567.55	sheen	35.16	0.00	3,532.39
	03/17/05	3,567.55	sheen	35.15	0.00	3,532.40
	03/18/05	3,567.55	-	35.05	0.00	3,532.50
	03/23/05	3,567.55	sheen	34.96	0.00	3,532.59
	03/30/05	3,567.55	sheen	34.90	0.00	3,532.65

TABLE 1
2005 GROUNDWATER ELEVATION DATA

PLAINS MARKETING, L.P.
RED BYRD 1
LEA COUNTY, NEW MEXICO

WELL NUMBER	DATE MEASURED	TOP OF CASING ELEVATION	DEPTH TO PRODUCT	DEPTH TO WATER	PSH THICKNESS	CORRECTED GROUND WATER ELEVATION
MW-2	04/06/05	3,567.55	sheen	34.88	0.00	3,532.67
	04/14/05	3,567.55	sheen	34.75	0.00	3,532.80
	05/26/05	3,567.55	sheen	34.28	0.00	3,533.27
	06/16/05	3,567.55	sheen	34.06	0.00	3,533.49
	06/22/05	3,567.55	sheen	34.00	0.00	3,533.55
	07/28/05	3,567.55	sheen	33.73	0.00	3,533.82
	08/11/05	3,567.55	sheen	33.59	0.00	3,533.96
	08/25/05	3,567.55	sheen	33.53	0.00	3,534.02
	09/13/05	3,567.55	sheen	33.42	0.00	3,534.13
	09/16/05	3,567.55	sheen	33.42	0.00	3,534.13
	09/30/05	3,567.55	-	33.35	0.00	3,534.20
	10/11/05	3,567.55	sheen	33.37	0.00	3,534.18
	10/28/05	3,567.55	sheen	33.32	0.00	3,534.23
	11/17/05	3,567.55	sheen	33.28	0.00	3,534.27
	12/02/05	3,567.55	sheen	33.21	0.00	3,534.34
	12/15/05	3,567.55	-	33.23	0.00	3,534.32
	12/30/05	3,567.55	sheen	33.18	0.00	3,534.37
MW-3	01/04/05	3,567.55	35.06	35.07	0.01	3,532.49
	01/12/05	3,567.55	sheen	35.00	0.00	3,532.55
	01/19/05	3,567.55	sheen	34.88	0.00	3,532.67
	01/26/05	3,567.55	sheen	34.79	0.00	3,532.76
	02/01/05	3,567.55	sheen	34.75	0.00	3,532.80
	02/09/05	3,567.55	sheen	34.61	0.00	3,532.94
	02/16/05	3,567.55	sheen	34.51	0.00	3,533.04
	02/23/05	3,567.55	sheen	34.40	0.00	3,533.15
	03/02/05	3,567.55	sheen	34.34	0.00	3,533.21
	03/09/05	3,567.55	sheen	34.31	0.00	3,533.24
	03/17/05	3,567.55	sheen	34.28	0.00	3,533.27
	03/18/05	3,567.55	-	34.20	0.00	3,533.35
	03/23/05	3,567.55	sheen	34.12	0.00	3,533.43
	03/30/05	3,567.55	sheen	33.98	0.00	3,533.57
	04/06/05	3,567.55	sheen	33.97	0.00	3,533.58
	04/14/05	3,567.55	sheen	34.80	0.00	3,532.75
	05/26/05	3,567.55	sheen	33.31	0.00	3,534.24
	06/16/05	3,567.55	sheen	33.10	0.00	3,534.45
	06/22/05	3,567.55	sheen	33.09	0.00	3,534.46
	07/28/05	3,567.55	sheen	32.79	0.00	3,534.76
	08/11/05	3,567.55	sheen	32.61	0.00	3,534.94
	08/25/05	3,567.55	sheen	32.58	0.00	3,534.97
	09/13/05	3,567.55	sheen	32.44	0.00	3,535.11
	09/16/05	3,567.55	sheen	32.49	0.00	3,535.06
	09/30/05	3,567.55	-	32.40	0.00	3,535.15
	10/11/05	3,567.55	sheen	32.41	0.00	3,535.14
	10/28/05	3,567.55	sheen	32.38	0.00	3,535.17
	11/17/05	3,567.55	sheen	32.32	0.00	3,535.23

TABLE 1
2005 GROUNDWATER ELEVATION DATA

PLAINS MARKETING, L.P.
RED BYRD 1
LEA COUNTY, NEW MEXICO

WELL NUMBER	DATE MEASURED	TOP OF CASING ELEVATION	DEPTH TO PRODUCT	DEPTH TO WATER	PSH THICKNESS	CORRECTED GROUND WATER ELEVATION
MW-3	12/02/05	3,567.55	sheen	32.28	0.00	3,535.27
*	12/15/05	3,567.55	33.28	33.29	0.01	3,534.27
	12/30/05	3,567.55	sheen	32.24	0.00	3,535.31
MW-4	01/04/05	3,567.80	sheen	35.94	0.00	3,531.86
	01/12/05	3,567.80	sheen	35.89	0.00	3,531.91
	01/19/05	3,567.80	sheen	35.80	0.00	3,532.00
	01/26/05	3,567.80	sheen	35.67	0.00	3,532.13
	02/01/05	3,567.80	sheen	35.62	0.00	3,532.18
	02/09/05	3,567.80	sheen	35.55	0.00	3,532.25
	02/16/05	3,567.80	sheen	35.48	0.00	3,532.32
	02/23/05	3,567.80	sheen	35.36	0.00	3,532.44
	03/02/05	3,567.80	sheen	35.28	0.00	3,532.52
	03/09/05	3,567.80	sheen	35.26	0.00	3,532.54
	03/17/05	3,567.80	sheen	35.26	0.00	3,532.54
	03/18/05	3,567.80	-	35.15	0.00	3,532.65
	03/23/05	3,567.80	sheen	35.04	0.00	3,532.76
	03/30/05	3,567.80	sheen	35.01	0.00	3,532.79
	04/06/05	3,567.80	sheen	34.98	0.00	3,532.82
	04/14/05	3,567.80	sheen	34.85	0.00	3,532.95
	05/26/05	3,567.80	sheen	34.29	0.00	3,533.51
	06/16/05	3,567.80	sheen	34.15	0.00	3,533.65
	06/22/05	3,567.80	sheen	34.07	0.00	3,533.73
	07/28/05	3,567.80	sheen	33.82	0.00	3,533.98
	08/11/05	3,567.80	sheen	33.66	0.00	3,534.14
	08/25/05	3,567.80	sheen	33.43	0.00	3,534.37
	09/13/05	3,567.80	sheen	33.32	0.00	3,534.48
	09/16/05	3,567.80	sheen	33.33	0.00	3,534.47
	09/30/05	3,567.80	-	33.25	0.00	3,534.55
	10/11/05	3,567.80	sheen	33.28	0.00	3,534.52
	10/28/05	3,567.80	sheen	33.22	0.00	3,534.58
	11/17/05	3,567.80	sheen	33.18	0.00	3,534.62
	12/02/05	3,567.80	-	33.10	0.00	3,534.70
	12/15/05	3,567.80	-	33.13	0.00	3,534.67
	12/30/05	3,567.80	sheen	33.08	0.00	3,534.72
MW-5	01/04/05	3,569.50	sheen	36.80	0.00	3,532.70
	01/12/05	3,569.50	sheen	36.75	0.00	3,532.75
	01/19/05	3,569.50	sheen	36.58	0.00	3,532.92
	01/26/05	3,569.50	sheen	36.46	0.00	3,533.04
	02/01/05	3,569.50	sheen	36.36	0.00	3,533.14
	02/09/05	3,569.50	sheen	36.27	0.00	3,533.23
	02/16/05	3,569.50	sheen	36.19	0.00	3,533.31
	02/23/05	3,569.50	sheen	36.14	0.00	3,533.36
	03/02/05	3,569.50	sheen	35.95	0.00	3,533.55
	03/09/05	3,569.50	sheen	35.93	0.00	3,533.57

TABLE 1

2005 GROUNDWATER ELEVATION DATA

PLAINS MARKETING, L.P.
RED BYRD 1
LEA COUNTY, NEW MEXICO

WELL NUMBER	DATE MEASURED	TOP OF CASING ELEVATION	DEPTH TO PRODUCT	DEPTH TO WATER	PSH THICKNESS	CORRECTED GROUND WATER ELEVATION
MW-5	03/17/05	3,569.50	sheen	35.91	0.00	3,533.59
*	03/18/05	3,569.50	35.69	35.70	0.01	3,533.81
	03/23/05	3,569.50	sheen	35.79	0.00	3,533.71
	03/30/05	3,569.50	sheen	35.54	0.00	3,533.96
	04/06/05	3,569.50	sheen	35.51	0.00	3,533.99
	04/14/05	3,569.50	sheen	35.44	0.00	3,534.06
	05/26/05	3,569.50	sheen	34.85	0.00	3,534.65
	06/16/05	3,569.50	sheen	34.65	0.00	3,534.85
	06/22/05	3,569.50	sheen	34.71	0.00	3,534.79
	07/28/05	3,569.50	sheen	34.37	0.00	3,535.13
	08/11/05	3,569.50	sheen	34.02	0.00	3,535.48
	08/25/05	3,569.50	sheen	34.14	0.00	3,535.36
	09/13/05	3,569.50	sheen	33.82	0.00	3,535.68
	09/16/05	3,569.50	sheen	33.92	0.00	3,535.58
*	09/30/05	3,569.50	33.82	33.83	0.01	3,535.68
	10/11/05	3,569.50	sheen	34.01	0.00	3,535.49
	10/28/05	3,569.50	sheen	33.95	0.00	3,535.55
	11/17/05	3,569.50	sheen	33.78	0.00	3,535.72
	12/02/05	3,569.50	sheen	33.72	0.00	3,535.78
	12/15/05	3,569.50	-	33.74	0.00	3,535.76
	12/30/05	3,569.50	sheen	33.69	0.00	3,535.81
MW-6	03/18/05	3,569.09	-	35.37	0.00	3,533.72
	06/16/05	3,569.09	-	34.41	0.00	3,534.68
	09/16/05	3,569.09	sheen	33.90	0.00	3,535.19
	12/15/05	3,569.09	-	33.70	0.00	3,535.39
MW-7	03/18/05	3,567.53	-	34.23	0.00	3,533.30
	06/16/05	3,567.53	-	33.26	0.00	3,534.27
	09/16/05	3,567.53	-	32.73	0.00	3,534.80
	12/15/05	3,567.53	-	32.57	0.00	3,534.96
MW-8	03/18/05	3,567.79	-	35.35	0.00	3,532.44
	06/16/05	3,567.79	sheen	34.32	0.00	3,533.47
	08/11/05	3,569.79	sheen	33.84	0.00	3,535.95
	09/13/05	3,569.79	sheen	33.70	0.00	3,536.09
	09/16/05	3,569.79	-	33.70	0.00	3,536.09
	12/02/05	3,569.79	sheen	33.46	0.00	3,536.33
	12/15/05	3,569.79	-	33.47	0.00	3,536.32
MW-9	03/18/05	3,568.62	-	36.61	0.00	3,532.01
	06/16/05	3,568.62	-	35.69	0.00	3,532.93
	09/16/05	3,568.62	sheen	35.10	0.00	3,533.52
	12/15/05	3,568.62	-	34.09	0.00	3,534.53
MW-10	03/18/05	3,570.11	-	36.50	0.00	3,533.61

TABLE 1
2005 GROUNDWATER ELEVATION DATA

PLAINS MARKETING, L.P.
RED BYRD 1
LEA COUNTY, NEW MEXICO

WELL NUMBER	DATE MEASURED	TOP OF CASING ELEVATION	DEPTH TO PRODUCT	DEPTH TO WATER	PSH THICKNESS	CORRECTED GROUND WATER ELEVATION
MW-10	06/16/05	3,570.11	-	35.41	0.00	3,534.70
	09/16/05	3,570.11	-	34.82	0.00	3,535.29
	12/15/05	3,570.11	-	34.64	0.00	3,535.47
MW-11	03/18/05	3,567.96	-	34.27	0.00	3,533.69
	06/16/05	3,567.96	-	33.30	0.00	3,534.66
	09/16/05	3,567.96	-	32.80	0.00	3,535.16
	12/15/05	3,567.96	-	32.60	0.00	3,535.36
MW-12	03/18/05	3,570.36	sheen	36.31	0.00	3,534.05
	06/16/05	3,570.36	sheen	35.34	0.00	3,535.02
	08/11/05	3,570.36	sheen	34.93	0.00	3,535.43
	09/13/05	3,570.36	sheen	34.83	0.00	3,535.53
	09/16/05	3,570.36	-	34.85	0.00	3,535.51
	12/02/05	3,570.36	-	34.63	0.00	3,535.73
	12/15/05	3,570.36	-	34.62	0.00	3,535.74

Elevations based on the North American Vertical Datum of 1929.

* Gauging data collected for these monitor wells indicates a measurable PSH thickness, which appears to be incongruous based on prior and subsequent data and historical trends.

TABLE 2

2005 CONCENTRATIONS OF BTEX IN GROUNDWATER

PLAINS MARKETING, L.P.
RED BYRD 1
LEA COUNTY, NM

All Concentrations are reported in mg/L.

SAMPLE LOCATION	SAMPLE DATE	SW 846-8012B,5030				
		BENZENE	TOLUENE	ETHYL-BENZENE	m, p - XYLENES	o - XYLENE
NMOCD REGULATORY LIMIT		0.01	0.75	0.75	0.62	
MW-1	03/18/05	Not Sampled				
	06/16/05	0.088	<0.05	0.063	<0.05	
	09/16/05	1.150	<0.2	1.610	1.150	
	12/15/05	0.596	<0.2	<0.2	<0.2	
MW-2	03/18/05	1.570	<0.5	<0.5	<0.5	
	06/16/05	1.030	<0.2	0.535	0.315	
	09/16/05	0.998	<0.2	0.681	0.424	
	12/15/05	0.849	<0.2	0.605	0.402	
MW-3	03/18/05	0.769	<0.5	<0.5	<0.5	
	06/16/05	0.990	<0.5	1.290	0.888	
	09/16/05	0.705	<0.2	0.678	0.458	
	12/15/05	Not Sampled				
MW-4	03/18/05	<0.005	<0.005	0.122	0.096	
	06/16/05	0.142	<0.005	0.124	0.116	
	09/16/05	0.092	<0.001	0.321	0.258	
	12/15/05	0.063	<0.005	0.289	0.230	
MW-5	03/18/05	Not Sampled				
	06/16/05	0.409	0.076	0.433	0.670	
	09/16/05	0.124	<0.001	0.302	0.340	
	12/15/05	0.149	<0.005	0.304	0.426	
MW-6	03/18/05	0.021	<0.001	0.003	<0.001	
	06/16/05	0.168	<0.02	0.038	<0.02	
	09/16/05	0.239	<0.001	0.060	0.030	
	12/15/05	0.249	<0.01	0.054	0.017	
MW-7	03/18/05	0.002	<0.001	<0.001	<0.001	
	06/16/05	0.011	<0.001	0.004	0.002	
	09/16/05	0.008	<0.001	0.001	<0.001	
	12/15/05	0.022	<0.001	0.003	0.002	
MW-8	03/18/05	0.080	<0.005	0.069	0.022	
	06/16/05	0.111	<0.001	0.105	0.048	
	09/16/05	0.063	<0.001	0.064	0.025	
	12/15/05	<0.001	<0.001	<0.001	0.006	
MW-9	03/18/05	0.016	<0.005	<0.005	<0.005	
	06/16/05	0.462	<0.2	0.212	<0.2	

TABLE 2

2005 CONCENTRATIONS OF BTEX IN GROUNDWATER

PLAINS MARKETING, L.P.
RED BYRD 1
LEA COUNTY, NM

All Concentrations are reported in mg/L.

		SW 846-8012B,5030				
SAMPLE LOCATION	SAMPLE DATE	BENZENE	TOLUENE	ETHYL-BENZENE	m, p - XYLENES	o - XYLENE
NMOCD REGULATORY LIMIT		0.01	0.75	0.75	0.62	
MW-9	09/16/05	0.663	0.0398	0.234	0.144	
	12/15/05	0.448	<0.1	0.171	<0.1	
MW-10	03/18/05	0.046	<0.01	0.021	<0.01	
	06/16/05	0.075	<0.02	0.069	0.033	
	09/16/05	0.246	<0.001	0.176	0.095	
	12/15/05	0.240	<0.1	0.193	<0.1	
MW-11	03/18/05	0.065	<0.005	0.010	<0.005	
	06/16/05	0.164	<0.01	0.013	<0.01	
	09/16/05	0.207	<0.001	0.006	<0.001	
	12/15/05	<0.001	<0.001	<0.001	<0.001	
MW-12	03/18/05	0.058	<0.005	0.043	0.042	
	06/16/05	0.107	<0.02	0.076	0.071	
	09/16/05	0.042	<0.02	0.033	<0.02	
	12/15/05	0.023	<0.001	<0.001	0.011	

Note: m,p and o Xylenes combined when analyzed by Trace Laboratories, Inc. only.

Appendices

Appendix A:
Notification of Release and Corrective
Action (Form C-141)

District I
1625 N. French Dr., Hobbs, NM 88240
District II
1301 W. Grand Avenue, Artesia, NM 88210
District III
1000 Rio Brazos Road, Aztec, NM 87410
District IV
1220 S. St. Francis Dr., Santa Fe, NM 87505

State of New Mexico
Energy Minerals and Natural Resources

Oil Conservation Division
1220 South St. Francis Dr.
Santa Fe, NM 87505

Form C-141
Revised October 10, 2003

Submit 2 Copies to appropriate
District Office in accordance
with Rule 116 on back
side of form

Release Notification and Corrective Action

OPERATOR

☒ Initial Report ☐ Final Report

Name of Company	Plains Pipeline, LP	Contact:	Camille Reynolds
Address:	3705 E. Hwy 158, Midland, TX 79706	Telephone No.	505-441-0965
Facility Name:	Red Byrd # 1	Facility Type:	Steel Pipeline

Surface Owner:	Red Byrd	Mineral Owner	Lease No.
----------------	----------	---------------	-----------

LOCATION OF RELEASE

Unit Letter	Section	Township	Range	Feet from the	North/South Line	Feet from the	East/West Line	County
H	1	20S	36E					Lea

Latitude 32° 36' 09.8" N Longitude 103° 17' 58.5" W

NATURE OF RELEASE

Type of Release:	Crude Oil	Volume of Release:	Unknown	Volume Recovered
Source of Release:	Steel Pipeline	Date and Hour of Occurrence	Date and Hour of Discovery	

Was Immediate Notice Given?	Yes <input type="checkbox"/> No <input type="checkbox"/> Not Required	If YES, To Whom?
-----------------------------	---	------------------

By Whom?	Date and Hour
----------	---------------

Was a Watercourse Reached?	<input type="checkbox"/> Yes <input type="checkbox"/> No	If YES, Volume Impacting the Watercourse.
----------------------------	--	---

If a Watercourse was Impacted, Describe Fully.*

Describe Cause of Problem and Remedial Action Taken.*

Describe Area Affected and Cleanup Action Taken.*
NOTE: Texas-New Mexico Pipeline was the owner/operator of the pipeline system at the time of the release, initial response information is unavailable.

I hereby certify that the information given above is true and complete to the best of my knowledge and understand that pursuant to NMOCD rules and regulations all operators are required to report and/or file certain release notifications and perform corrective actions for releases which may endanger public health or the environment. The acceptance of a C-141 report by the NMOCD marked as "Final Report" does not relieve the operator of liability should their operations have failed to adequately investigate and remediate contamination that pose a threat to ground water, surface water, human health or the environment. In addition, NMOCD acceptance of a C-141 report does not relieve the operator of responsibility for compliance with any other federal, state, or local laws and/or regulations.

Signature:		OIL CONSERVATION DIVISION	
Printed Name: Camille Reynolds		Approved by District Supervisor:	
Title: Remediation Coordinator		Approval Date:	Expiration Date:
E-mail Address: cgreynolds@paalp.com		Conditions of Approval:	Attached <input type="checkbox"/>
Date: 3/21/2005 Phone: (505)441-0965			

* Attach Additional Sheets If Necessary