

1R - 187

REPORTS

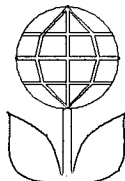
DATE:

10/22/1998

OCT 22 1998



**UMC Carlisle State Com # 1
Pit Remediation Project
Closure Report
Volume II**



**Whole Earth Environmental
19606 San Gabriel
Houston, Tx. 77084**



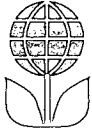
INDEX

Section A Pits prior to remediation

- A-1 West Reserve Pit during event**
- A-2 West Reserve Pit during event**
- A-3 West Reserve Pit during event**
- A-4 West Emergency Pit during event**
- A-5 East Emergency Pit during event**
- A-6 East Emergency Pit during event**

Section B Aerial Views Before Remediation

- B-1 Overall view during first week of remediation project**
- B-2 Detail of West Emergency Pit backfill & West Reserve Pit excavation**
- B-3 Detail of west spread zone**
- B-4 Overall view during first week of remediation project**
- B-5 Detail of East Emergency Pit & east spread zone**
- B-6 Detail of East Emergency Pit & east spread zone**
- B-7 Overall view during first week of remediation project**
- B-8 Overall view during first week of remediation project**
- B-9 View from Carlisle residence to project site**



Section C West Emergency Pit

- C-1** View from "J" Battery overlooking West Emergency Pit
- C-2** West Emergency Pit prior to remediation
- C-3** West Emergency Pit prior to remediation
- C-4** Detail of drilling West Emergency Pit monitoring well
- C-5** West Emergency Pit liner installation detail
- C-6** West Emergency Pit liner installation detail
- C-7** West Emergency Pit liner installation detail
- C-8** West Emergency Pit liner installation detail
- C-9** West Emergency Pit liner installation detail
- C-10** Detail of boulders placed into pit after 10' backfill
- C-11** West Emergency Pit backfill detail

Section D West Reserve Pit

- D-1** West Reserve Pit prior to remediation
- D-2** West Reserve Pit prior to remediation
- D-3** West Reserve Pit prior to remediation
- D-4** West Reserve Pit prior to remediation
- D-5** Boulder pile at West Reserve Pit prior to remediation (see C-10)
- D-6** Detail of mixing West Reserve Pit



Section E East Reserve Pit

- E-1** East Reserve Pit prior to closure
- E-2** East Reserve Pit prior to closure
- E-3** East Reserve Pit prior to closure
- E-4** Detail of East Reserve Pit excavation
- E-5** Detail of East Reserve Pit excavation

Section F East Emergency Pit

- F-1** Detail of E. Emergency Pit prior to remediation
- F-2** Detail of E. Emergency Pit prior to remediation
- F-3** Detail of the drilling of the test pit monitor well
- F-4** Detail of coring the pit center to determine vertical extent
- F-5** Detail of boulder pile at northern edge of the pit
- F-6** View of back-filling
- F-7** View of back-filling

Section G Aerial Views After Remediation

- G-1** Detail of E. Emergency & E. Reserve Pits after final closure
- G-2** Detail of W. Emergency & W. Reserve Pits after final closure
- G-3** Detail of north & west spread zones after final pit closure
- G-4** View of overall site after final pit closure
- G-5** View of overall site after final pit closure
- G-6** View of overall site after final pit closure
- G-7** View of overall site after final pit closure



Photographic Notes

The photographs contained within this report were obtained from three camera sources. The first set was generated by Callaway Safety and transmitted to Whole Earth through email. The Whole Earth photographs were generated either through a digital camera or through digitized 35 mm photographs. The differences in photographic resolution are solely the result of the differing source medium. The photographic editing was limited to re-sizing, contrast improvements and image smoothing.

The photographic originals including film negatives are available upon request and will be retained by Whole Earth for a minimum period of three years.



Section A

Pits Prior to Remediation

- A-1** West Reserve Pit during event
View to NE
- A-2** West Reserve Pit during event
View to E
- A-3** West Reserve Pit during event
View to ENE
- A-4** West Emergency Pit during event
View to N
- A-5** East Emergency Pit during event
View to NE
- A-6** East Emergency Pit during event
View to W



A-1 West Reserve Pit during event



A-2 West Reserve Pit During Event



A-3 West Reserve Pit during event



A-4 West Emergency Pit during event



A-5 East Emergency Pit during event



A-6 East Emergency Pit during event



Section B

Aerial Views Before Remediation

- B-1** Overall view during first week of remediation project
View to ESE
- B-2** Detail of West Emergency Pit backfill & West Reserve Pit excavation
View to E
- B-3** Detail of west spread zone
View to ENE
- B-4** Overall view during first week of remediation project
View to W
- B-5** Detail of East Emergency Pit & east spread zone
View to SE
- B-6** Detail of East Emergency Pit & east spread zone
View to SE
- B-7** Overall view during first week of remediation project
View to W
- B-8** Overall view during first week of remediation project
View to NE
- B-9** View from Carlisle residence to project site
View to NNE



B-1



B-2



B-3



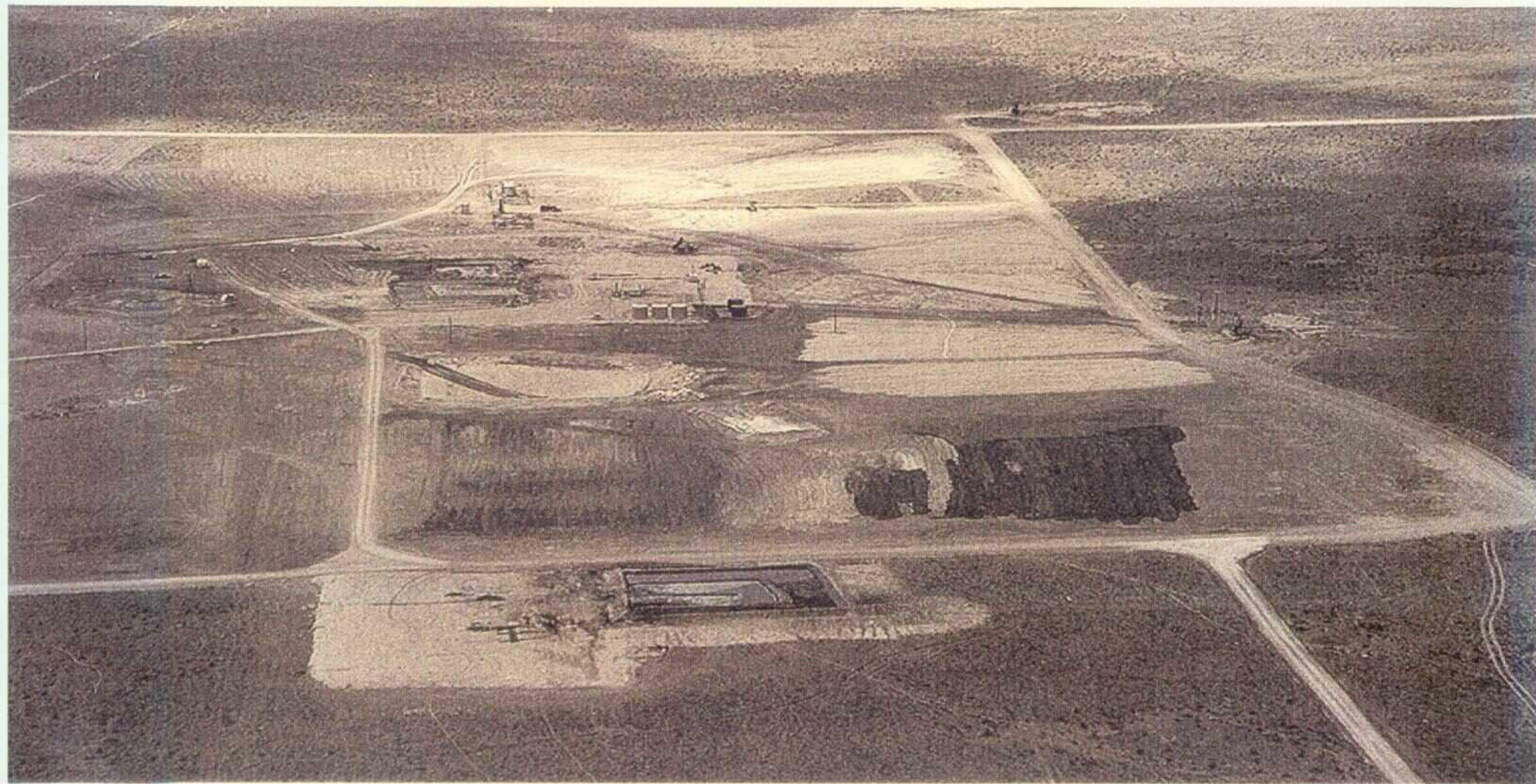
B-4



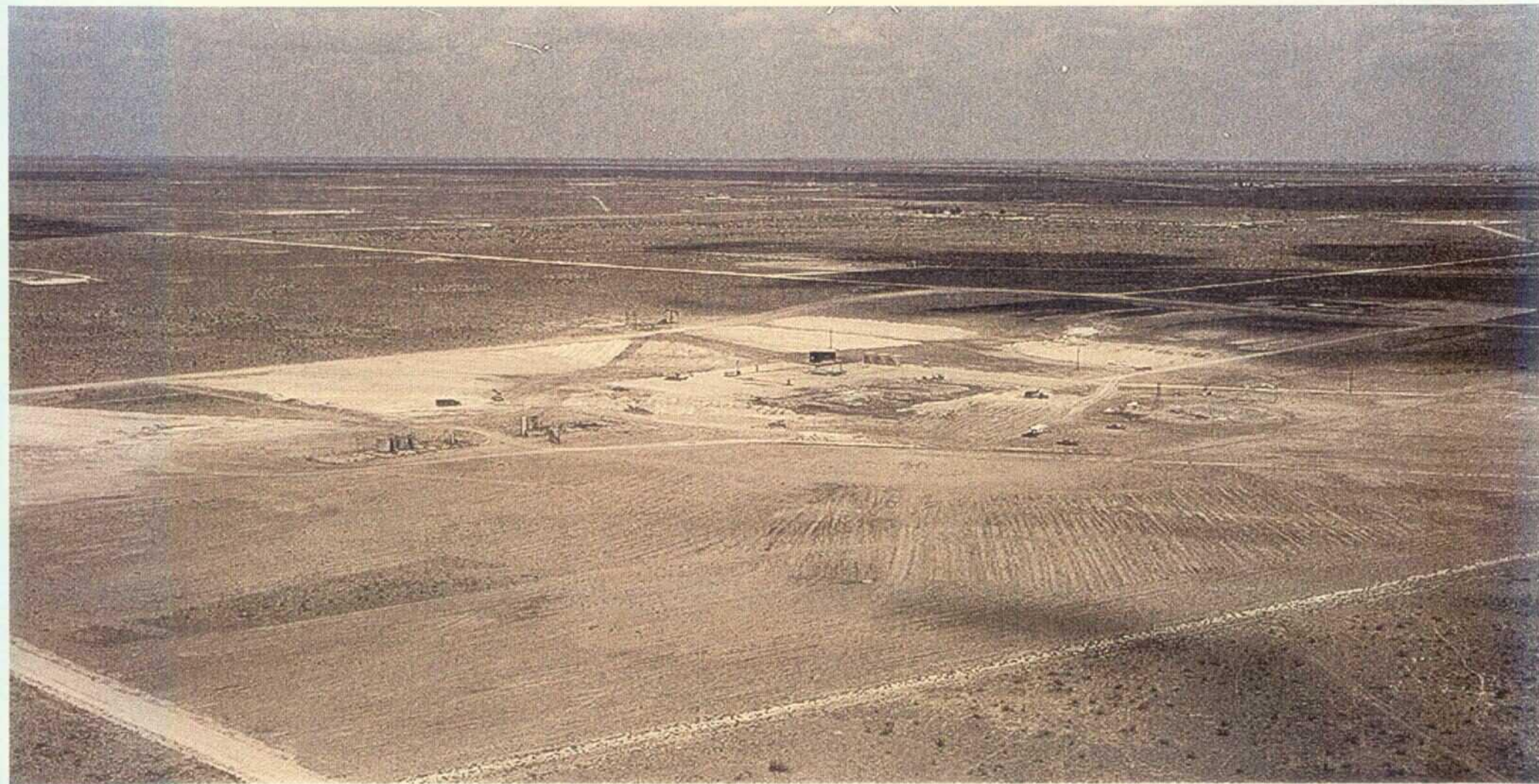
B-5



B-6



B-7



B-8



B-9



Section C

West Emergency Pit

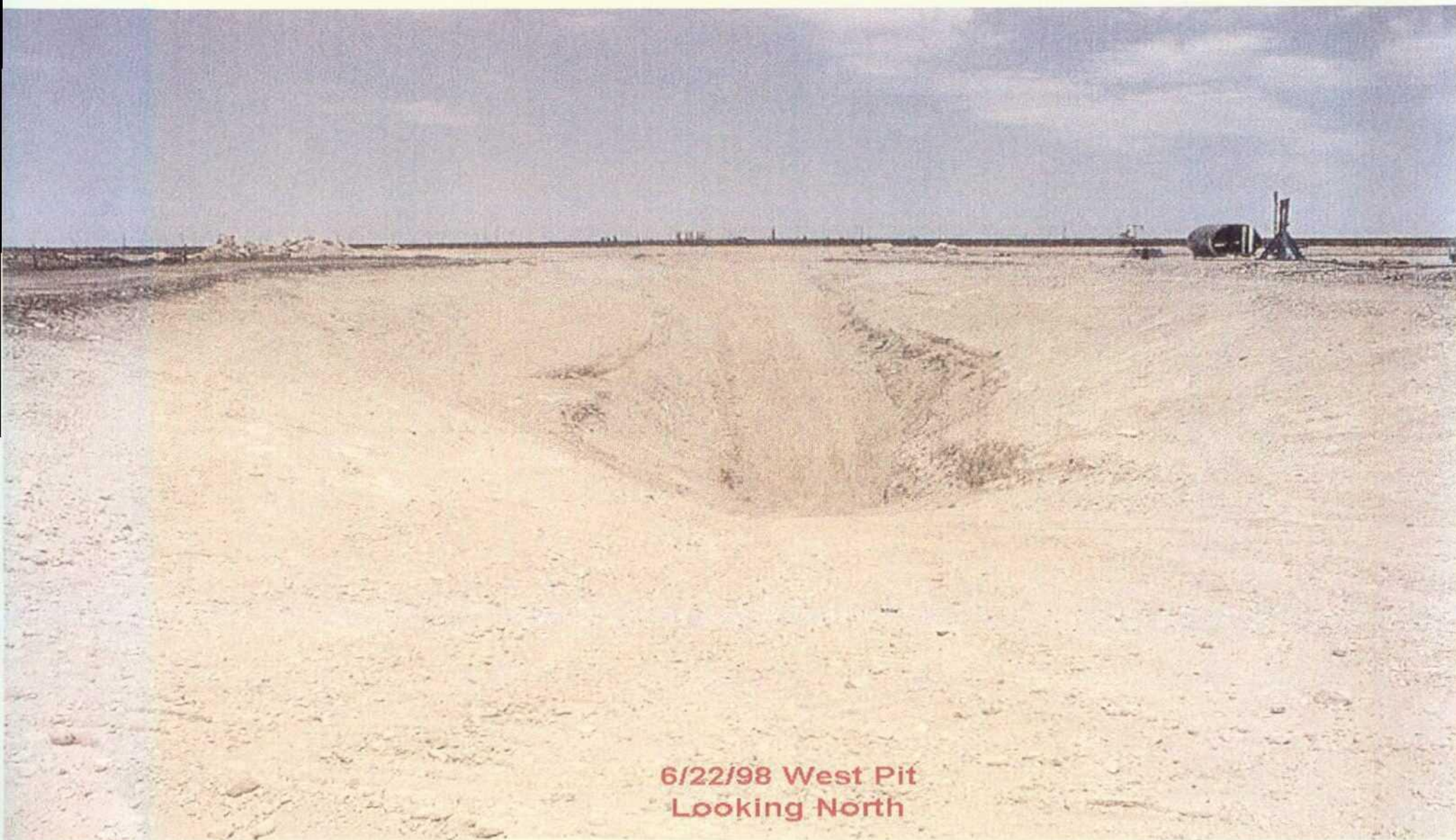
- C-1** View from "J" Battery overlooking West Emergency Pit
View to E
- C-2** West Emergency Pit prior to remediation
View to E
- C-3** West Emergency Pit prior to remediation
View to N
- C-4** Detail of drilling West Emergency Pit monitoring well
View to N
- C-5** West Emergency Pit liner installation detail
View to NE
- C-6** West Emergency Pit liner installation detail
View to ENE
- C-7** West Emergency Pit liner installation detail
View to N
- C-8** West Emergency Pit liner installation detail
View to S
- C-9** West Emergency Pit liner installation detail
View to S
- C-10** Detail of boulders placed into pit after 10' backfill
View to N
- C-11** West Emergency Pit backfill detail
View to NE



C-1



C-2



6/22/98 West Pit
Looking North

C-3



C-4



C-5



C-6



C-7



C-8



C-9



C-10



C-11



Section D

West Reserve Pit

- D-1** West Reserve Pit prior to remediation
- D-2** West Reserve Pit prior to remediation
- D-3** West Reserve Pit prior to remediation
- D-4** West Reserve Pit prior to remediation
- D-5** Boulder pile at West Reserve Pit prior to remediation (see C-10)
View to NE
- D-6** Detail of mixing West Reserve Pit
View to SW



D-1

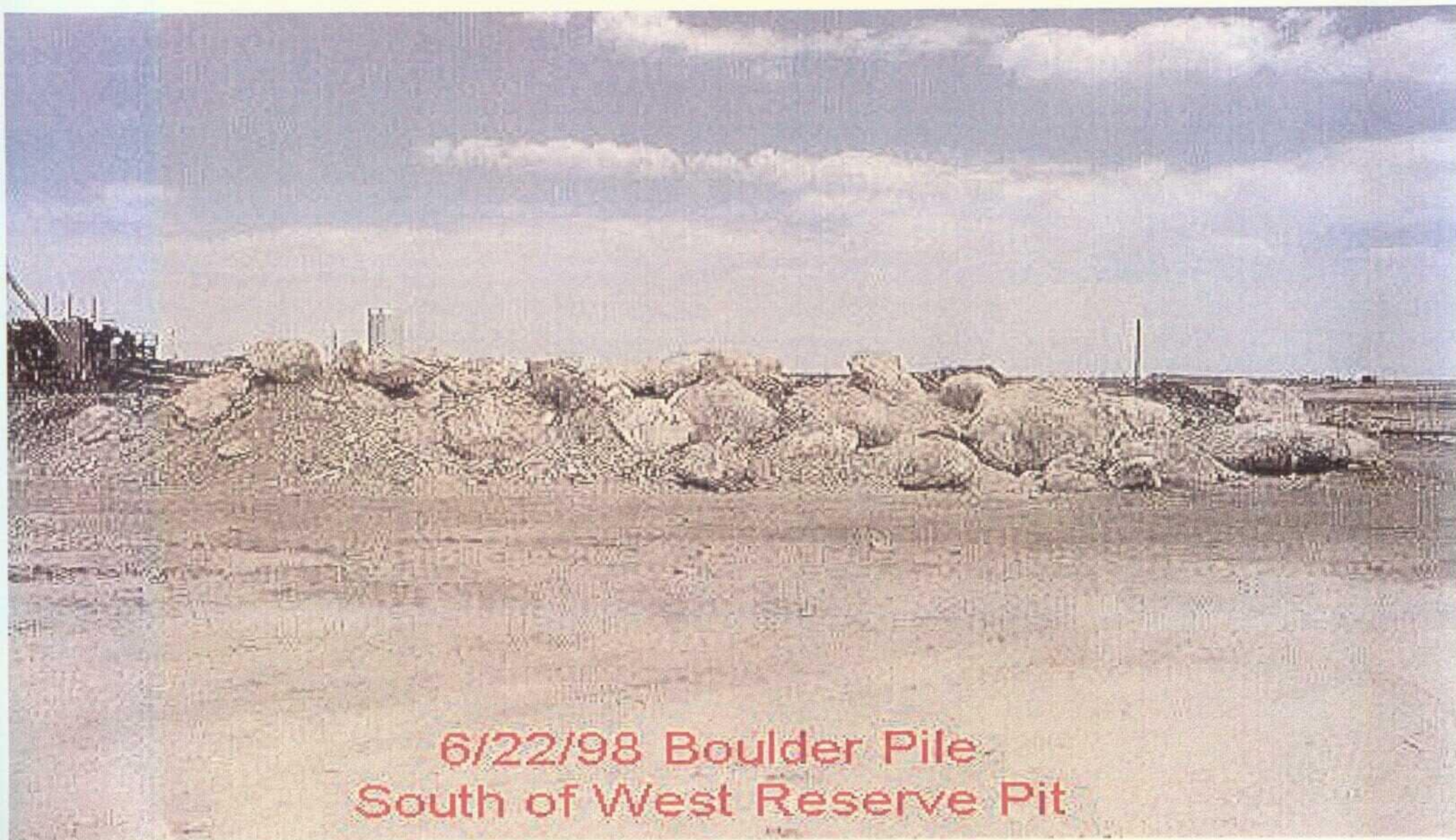




6/22/98 West Reserve Pit
Looking Northeast



D-4



6/22/98 Boulder Pile
South of West Reserve Pit



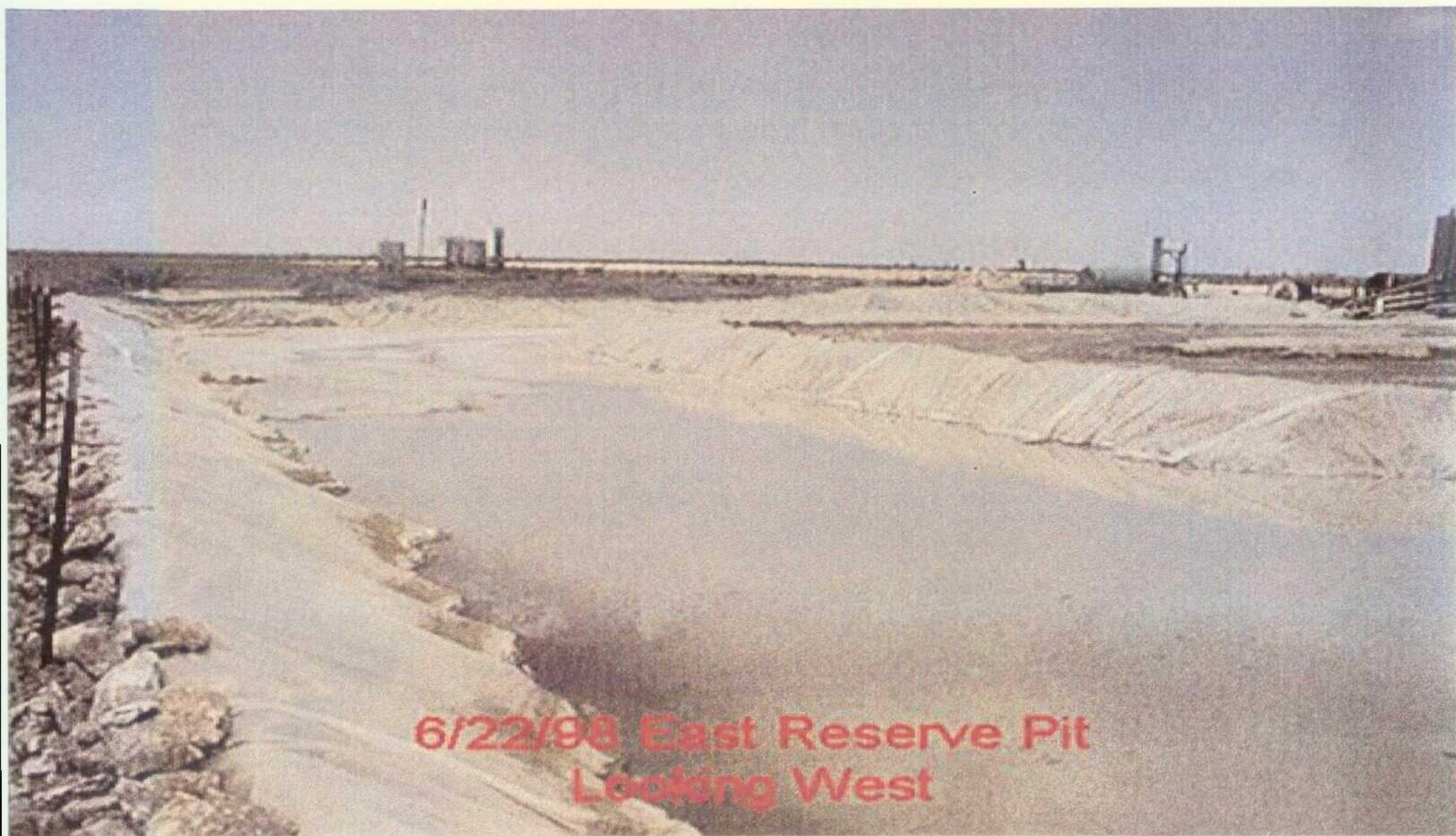
D-6



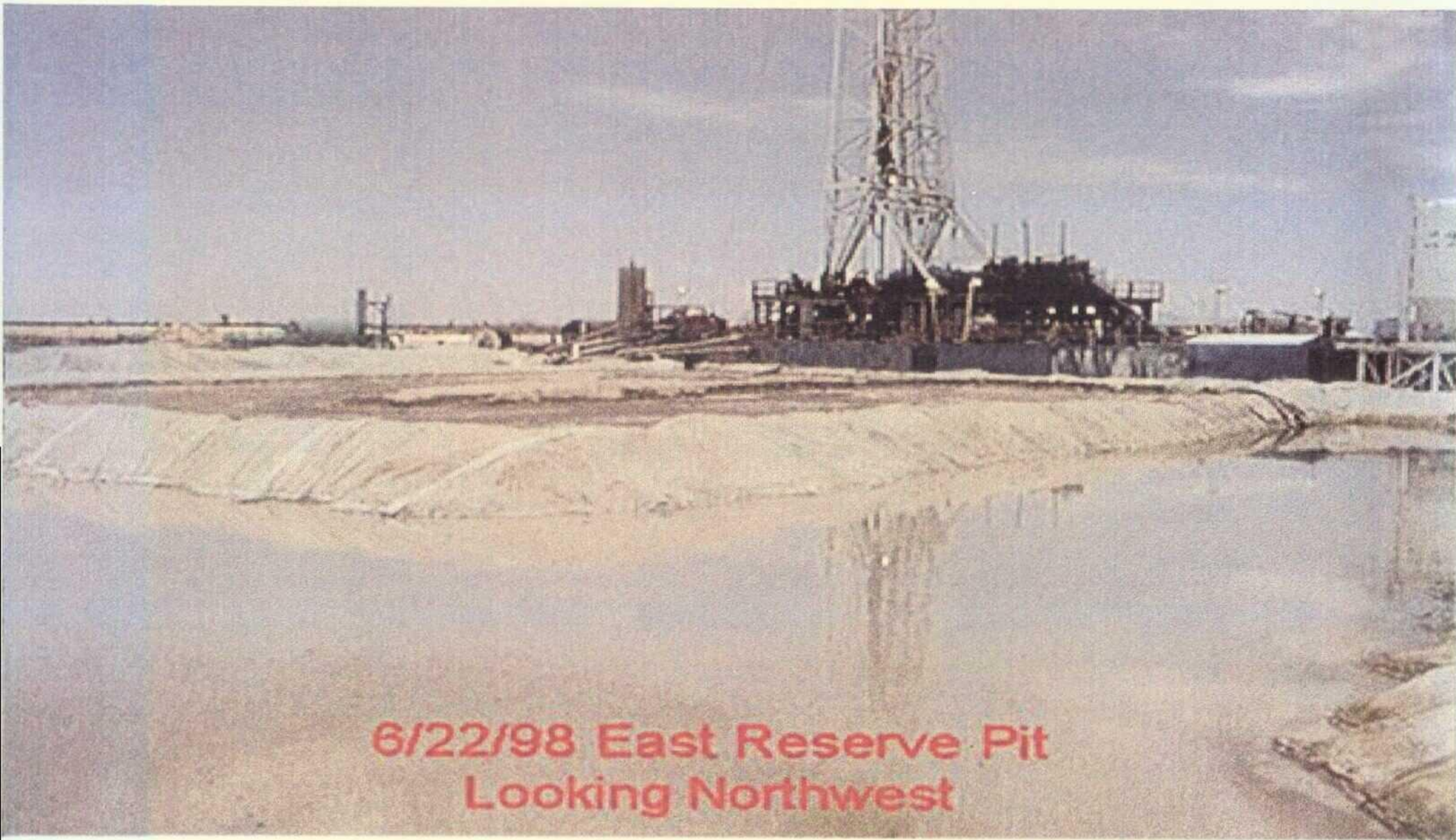
Section E

East Reserve Pit

- E-1** East Reserve Pit prior to closure
- E-2** East Reserve Pit prior to closure
- E-3** East Reserve Pit prior to closure
- E-4** Detail of East Reserve Pit excavation
View to N
- E-5** Detail of East Reserve Pit excavation
View to NW



E-1



6/22/98 East Reserve Pit
Looking Northwest



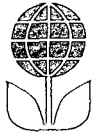
6/22/98 East Reserve Pit
Looking North



E-4



E-5



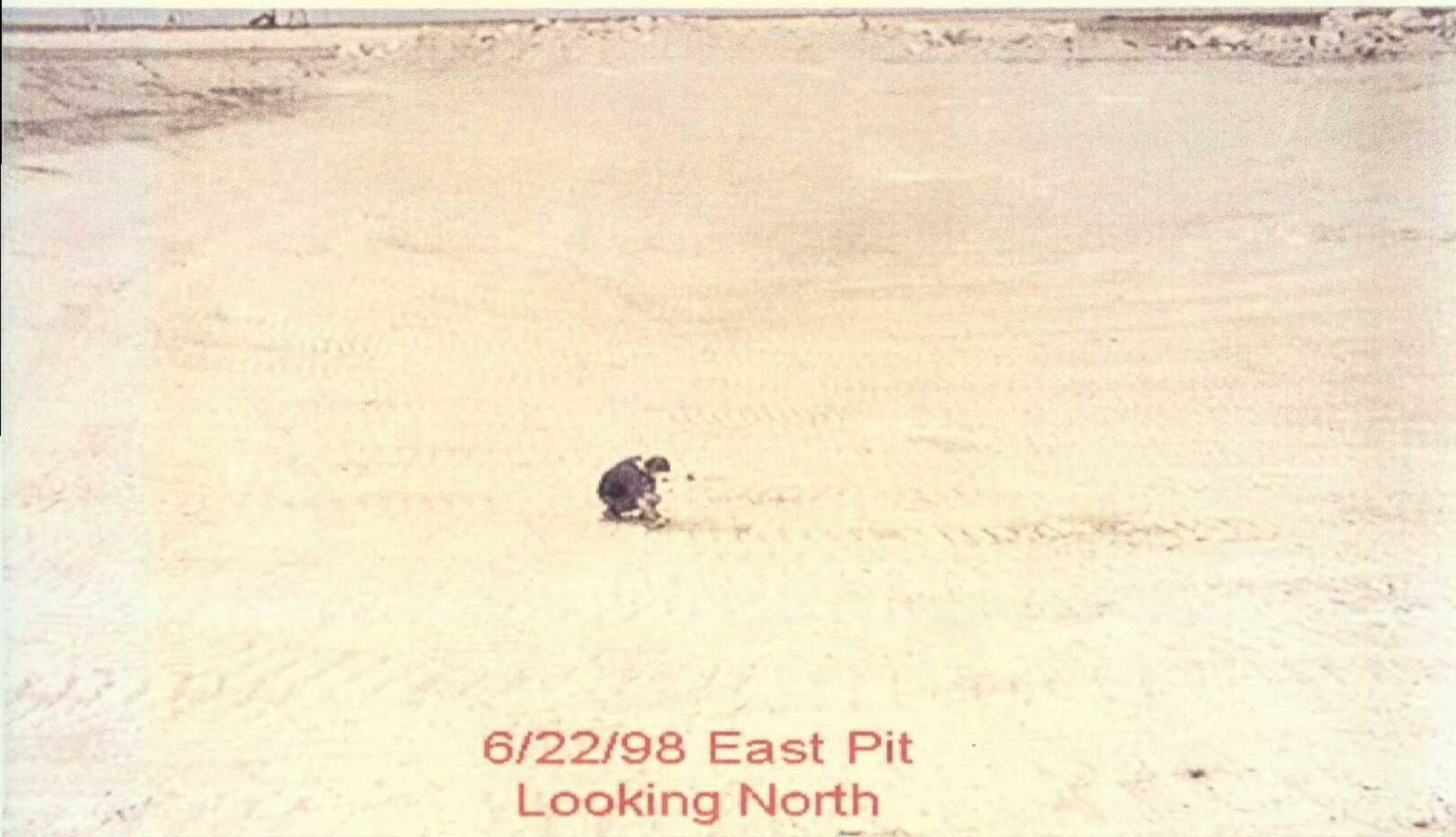
Section F

East Emergency Pit

- F-1** Detail of E. Emergency Pit prior to remediation
- F-2** Detail of E. Emergency Pit prior to remediation
- F-3** Detail of the drilling of the test pit monitor well
View to NW
- F-4** Detail of coring the pit center to determine vertical extent
View to N
- F-5** Detail of boulder pile at northern edge of the pit
View to S
- F-6** View of back-filling
View to N
- F-7** View of back-filling
View to NW



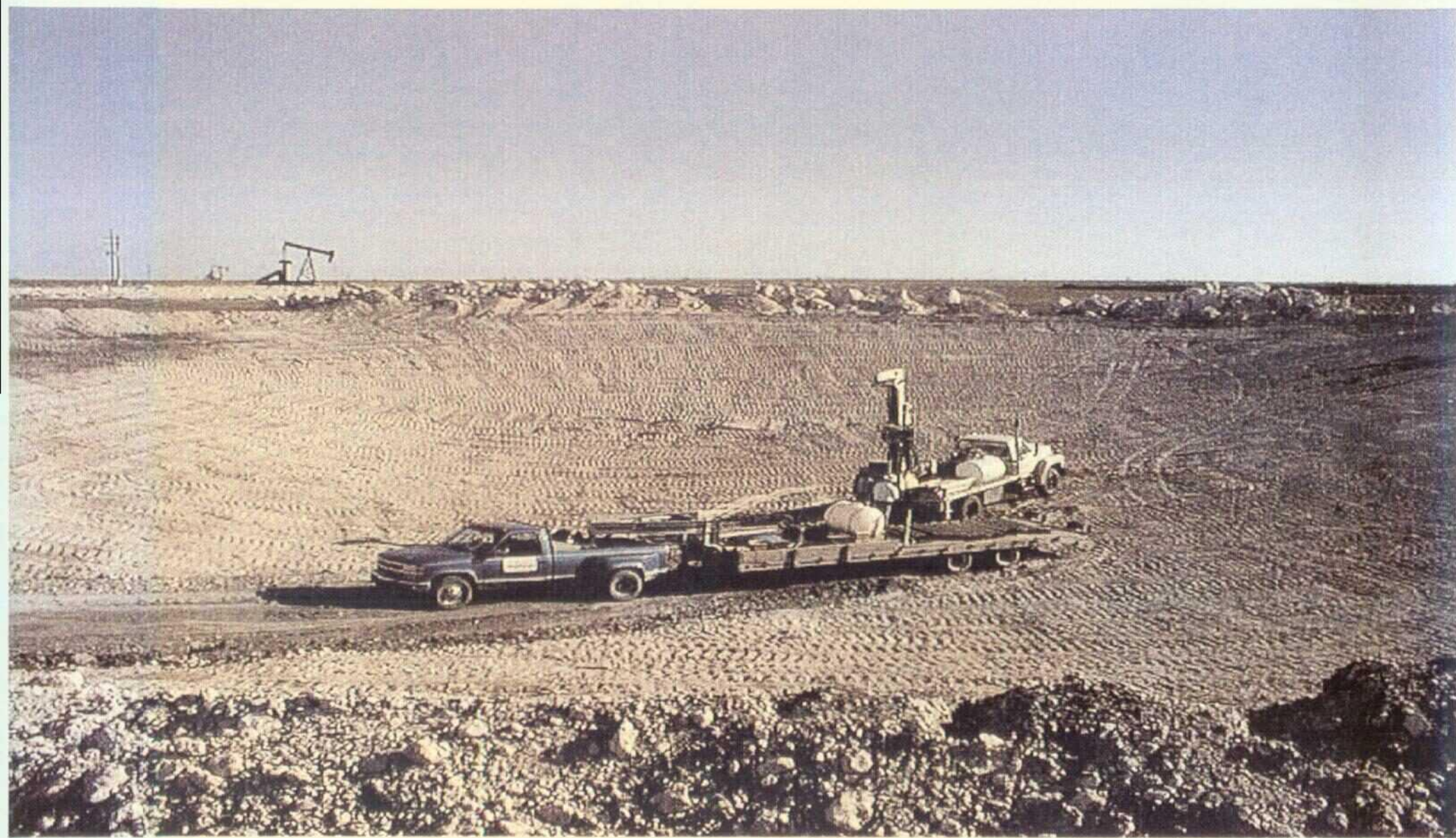
F-1



6/22/98 East Pit
Looking North



F-3



F-4



F-5



F-6



F-7



Section G

Aerial Views after Remediation

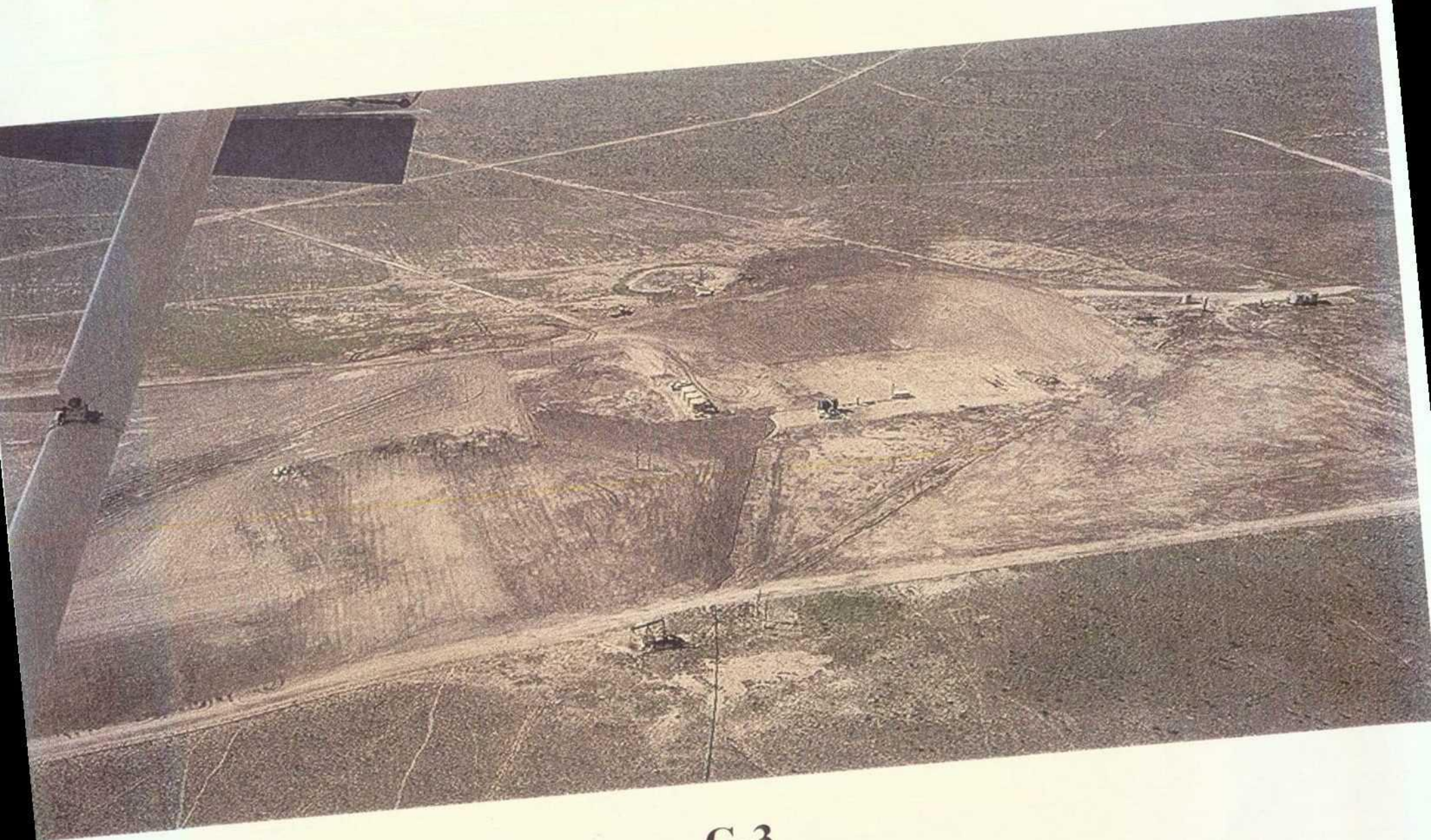
- G-1** Detail of E. Emergency & E. Reserve Pits after final closure
View to SE
- G-2** Detail of W. Emergency & W. Reserve Pits after final closure
View to NE
- G-3** Detail of north & west spread zones after final pit closure
View to SSE
- G-4** View of overall site after final pit closure
View to NE
- G-5** View of overall site after final pit closure
View to NE
- G-6** View of overall site after final pit closure
View to E
- G-7** View of overall site after final pit closure
View to ENE



G-1



G-2



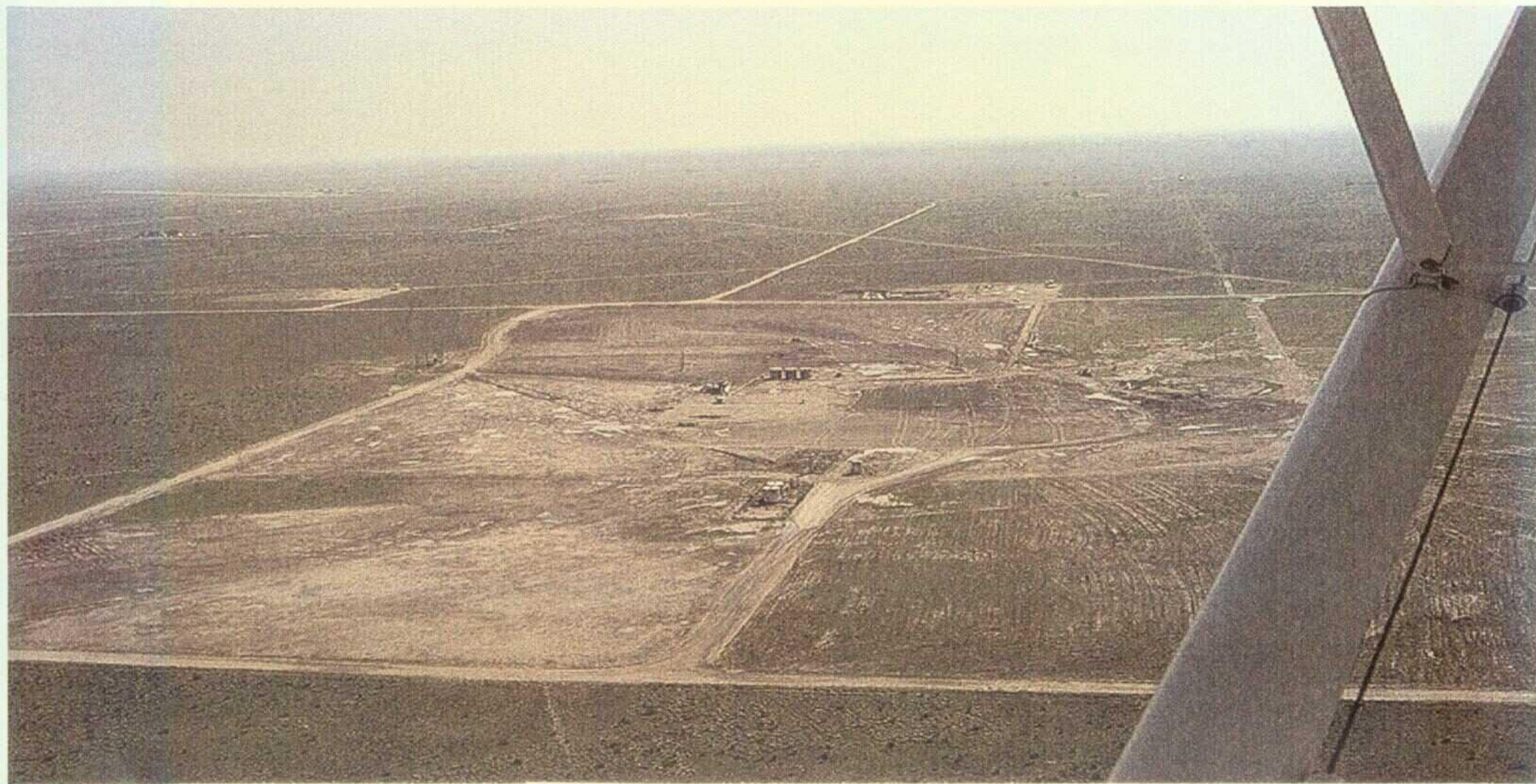
G-3



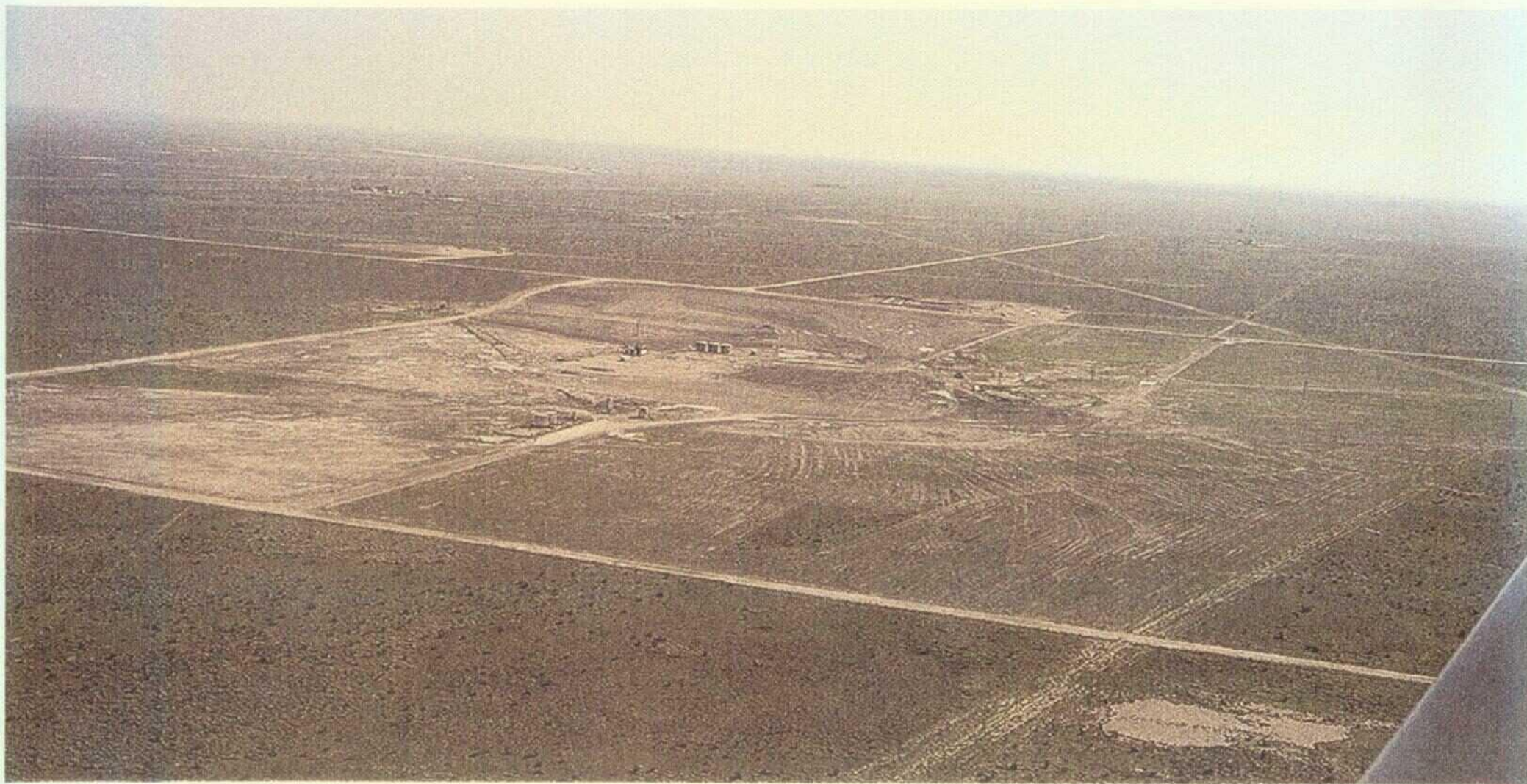
G-4



G-5



G-6



G-7



Section B

Aerial Views Before Remediation

- B-1** Overall view during first week of remediation project
View to ESE
- B-2** Detail of West Emergency Pit backfill & West Reserve Pit excavation
View to E
- B-3** Detail of west spread zone
View to ENE
- B-4** Overall view during first week of remediation project
View to W
- B-5** Detail of East Emergency Pit & east spread zone
View to SE
- B-6** Detail of East Emergency Pit & east spread zone
View to SE
- B-7** Overall view during first week of remediation project
View to W
- B-8** Overall view during first week of remediation project
View to NE
- B-9** View from Carlisle residence to project site
View to NNE