

1R - 412

**GENERAL
CORRESPONDENCE**

YEAR(S):

2006

Exhibit 1

LEGAL DESCRIPTION

(DEEDED)

Section 1, Township 25, Range 36, 160.0 Acres being the Southwest quarter.

Section 11, Township 25, Range 36, 160 Acres Being the Southeast quarter.

Section 12, Township 25, Range 36, 320 Acres being the South half.

Section 13, Township 25, Range 36, being the entire section.

Section 7, Township 25, Range 37, 317.32 Acres being Lots 3-4, and the East half of the Southwest quarter, and the Southeast quarter of said section 7.

Section 18, Township 25, Range 37, 155.76 acres being Lots 1, 2, 3, 4. 203.40 acres Located in the East half of the West half, and the West half of the East half. Tract beginning 1321.2 feet West of the Northeast corner section, thence West approximately 2638.8 feet, South approximately 5280 feet, East approximately 718 feet, North 19 deg. 46 min. East approximately 5613.9 to the point of beginning.

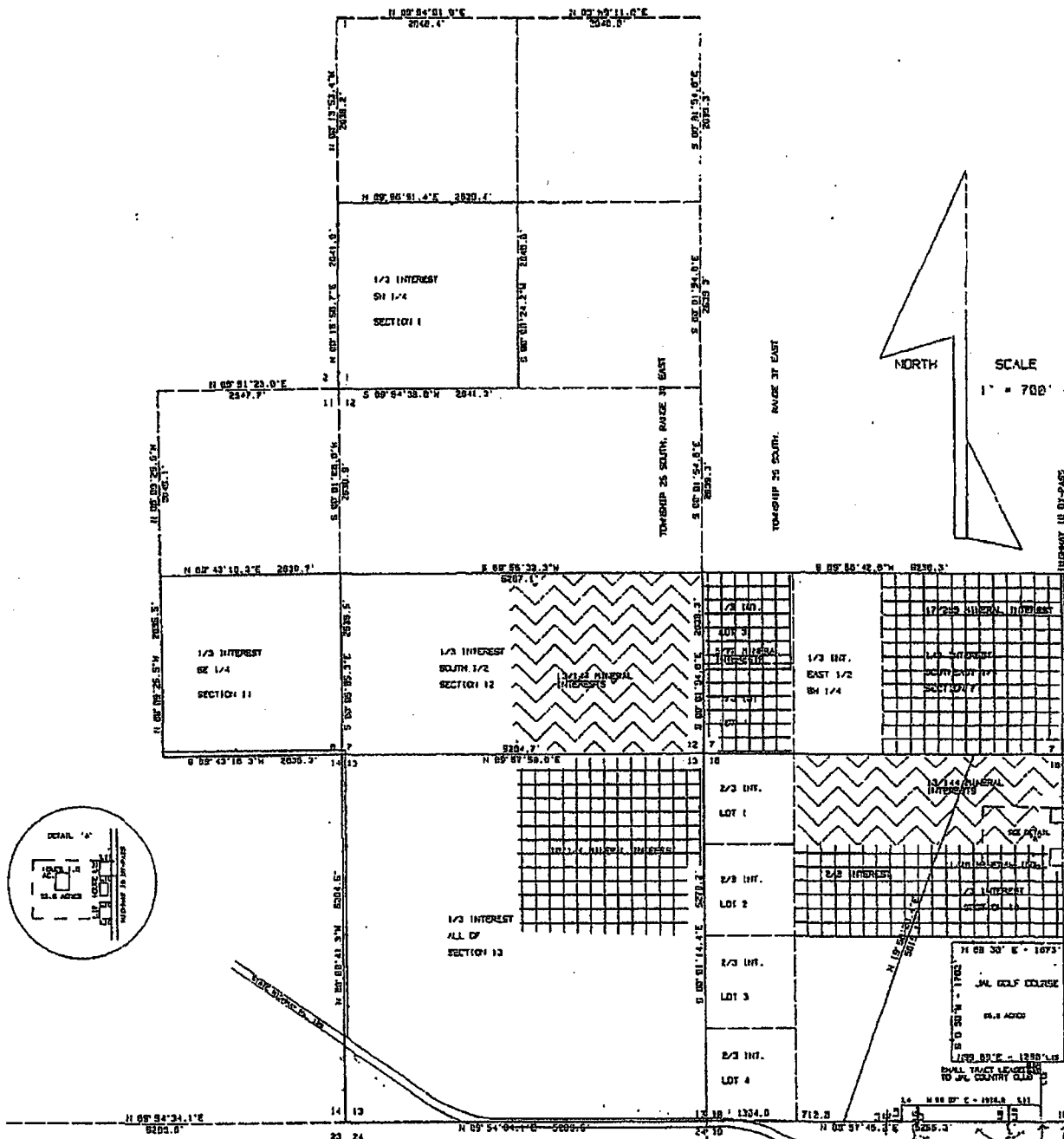
Section 18, Township 25, Range 37 1.0 Acres located in the Northeast quarter. Beginning South 89 deg. 57 min. West 50 feet, and North 0 deg. 3 min. West 1165 feet from the Southeast corner of the Northeast quarter of section 18, thence South 89 deg. 57 min. West 210 feet, North 0 deg. 3 min. West 197.8 feet, North 84

OK 

deg. 27 min. East 211 feet, South 0 deg. 3 min. East 218 feet to the point of beginning.

Section 18, Township 25, Range 37. 255.99 acres located in the East half. Tract beginning at the Northeast corner of section 18, thence South 89 deg. 52 min. West 1321.2 feet to the intersect of the Jal corporate boundary, thence South 19 deg. 46 min. West along Jal corp. Boundary line 5610.7 feet more or less to the South line of section 18, East along said line 602 feet, more or less, to the South quarter corner of section 18, North 20 feet, East 230 feet, North 210 feet, East 210 feet, South 210 feet, East 20 feet, North 210 feet, East 1310 feet, South 198 feet, more or less, East 10 feet, North 198 feet, East 440 feet, North 400.6 feet, East 20 feet, North 222 feet, East 400 feet to the East Line of Section 18, North along the East line of Section 18, to a point 1155 feet North of the East quarter corner of Section 18, South 89 deg. 57 min. West 260 feet, North 0 deg. 3 min. West 179.8 feet, North 84 deg. 27 min. East 211 feet, South 0 deg. 3 min. East 218 feet, North 89 deg. 57 min. East 50 feet to the East line of Section 18, thence North along said line 419 feet, West 210 feet, North 210 feet, East 210 feet, to the East line of Section 18, North along said East line to the Northeast corner of section 18, and the point of beginning.

OK  OS002292



PLAT OF SW 1/4 SECTION 1, THE SE 1/4 OF SECTION 11, AND THE SOUTH 1/2 OF SECTION 12, ALL OF SECTION 13, T-25-S, R-36-E, N.M.P.M., AND SOUTH 1/2 OF SECTION 7, AND ALL OF SECTION 18 EXCEPT AS SHOWN ON THE PLAT, T-25-S, R-37-E, N.M.P.M., LEA COUNTY, NEW MEXICO.

I, TRUMAN GASKIN, DO HEREBY CERTIFY THAT THIS PLAT REPRESENTS A SURVEY MADE ON THE PRELIMINARY UNDER THE SUPERVISION OF THE DAY OF THE 12th DAY OF 1961, AND IS TO THE BEST OF MY KNOWLEDGE TRUE AND CORRECT.

Truman Gaskin
 TRUMAN GASKIN, REGISTERED PUBLIC SURVEYOR
 NEW MEXICO 16, 2126



LINE	BEARING	DISTANCE
1	NORTH	20.0
2	EAST	210.0
3	SOUTH	210.0
4	WEST	210.0
5	NORTH	210.0
6	EAST	210.0
7	SOUTH	210.0
8	WEST	210.0
9	NORTH	210.0
10	EAST	210.0
11	SOUTH	210.0
12	WEST	210.0
13	NORTH	210.0
14	EAST	210.0
15	SOUTH	210.0
16	WEST	210.0
17	NORTH	210.0
18	EAST	210.0
19	SOUTH	210.0
20	WEST	210.0
21	NORTH	210.0
22	EAST	210.0
23	SOUTH	210.0
24	WEST	210.0
25	NORTH	210.0
26	EAST	210.0
27	SOUTH	210.0
28	WEST	210.0
29	NORTH	210.0
30	EAST	210.0
31	SOUTH	210.0
32	WEST	210.0
33	NORTH	210.0
34	EAST	210.0
35	SOUTH	210.0
36	WEST	210.0
37	NORTH	210.0
38	EAST	210.0
39	SOUTH	210.0
40	WEST	210.0
41	NORTH	210.0
42	EAST	210.0
43	SOUTH	210.0
44	WEST	210.0
45	NORTH	210.0
46	EAST	210.0
47	SOUTH	210.0
48	WEST	210.0
49	NORTH	210.0
50	EAST	210.0
51	SOUTH	210.0
52	WEST	210.0
53	NORTH	210.0
54	EAST	210.0
55	SOUTH	210.0
56	WEST	210.0
57	NORTH	210.0
58	EAST	210.0
59	SOUTH	210.0
60	WEST	210.0
61	NORTH	210.0
62	EAST	210.0
63	SOUTH	210.0
64	WEST	210.0
65	NORTH	210.0
66	EAST	210.0
67	SOUTH	210.0
68	WEST	210.0
69	NORTH	210.0
70	EAST	210.0
71	SOUTH	210.0
72	WEST	210.0
73	NORTH	210.0
74	EAST	210.0
75	SOUTH	210.0
76	WEST	210.0
77	NORTH	210.0
78	EAST	210.0
79	SOUTH	210.0
80	WEST	210.0
81	NORTH	210.0
82	EAST	210.0
83	SOUTH	210.0
84	WEST	210.0
85	NORTH	210.0
86	EAST	210.0
87	SOUTH	210.0
88	WEST	210.0
89	NORTH	210.0
90	EAST	210.0
91	SOUTH	210.0
92	WEST	210.0
93	NORTH	210.0
94	EAST	210.0
95	SOUTH	210.0
96	WEST	210.0
97	NORTH	210.0
98	EAST	210.0
99	SOUTH	210.0
100	WEST	210.0

11.11 26
 11.11 26
 11.11 26

EXHIBIT B

- 1) Jalmat #1
- 2) TM 0245-2
- 3) Jalmat #22B
- 4) Jalmat #22A
- 5) Jalmat 2
- 6) DT-27
- 7) Jalmat #3
- 8) East half Shell 6" (east of road)
- 9) SH 0193-2
- 10) SH 0184-1