

1R - 420

REPORTS

DATE:

2006



PLAINS Marketing, L.P.

March 24, 2006

Mr. Ed Martin
New Mexico Oil Conservation Division
Environmental Bureau
1220 South St. Francis Drive
Santa Fe, New Mexico 87505

Re: Plains – Annual Monitoring Reports
16 Sites in Lea County, New Mexico

Dear Mr. Martin:

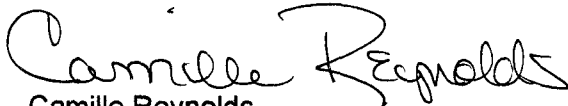
Plains All American is an operator of crude oil pipelines and terminal facilities in the state of New Mexico. Plains All American actively monitors certain historical release sites exhibiting groundwater impacts, consistent with assessments and work plans developed in consultation with the New Mexico Oil Conservation Division (NMOCD). In accordance with the rules and regulations of the NMOCD, Plains All American hereby submits our Annual Monitoring reports for the following sites:

TNM 97-17	Section 21, Township 20 South, Range 37 East, Lea County
TNM 97-18	Section 28, Township 20 South, Range 37 East, Lea County
TNM 98-05A	Section 26, Township 21 South, Range 37 East, Lea County
TNM 98-05B	Section 26, Township 21 South, Range 37 East, Lea County
TNM 97-04	Section 11, Township 16 South, Range 35 East, Lea County
Texaco Skelly "F"	Section 21, Township 20 South, Range 37 East, Lea County
Darr Angell #2	Sections 11 and 14, Township 15 South, Range 37 East, Lea County
LF-59	Section 32, Township 19 South, Range 37 East, Lea County
SPS-11	Section 18, Township 18 South, Range 36 East, Lea County
Monument #2	Sections 6 and 7, Township 20 South, Range 37 East, Lea County
Monument #10	Section 32, Township 19 South, Range 37 East, Lea County
Monument #17	Section 29, Township 19 South, Range 37 East, Lea County
Monument #18	Section 7, Township 20 South, Range 37 East, Lea County
Bob Durham	Sections 31 and 32, Township 19 South, Range 37 East, Lea County
Monument Barber 10" Sour	Section 32, Township 19 South, Range 37 East, Lea County
Lea Station to Monument 6"	Section 5, Township 20 South, Range 37 East, Lea County

Nova prepared these documents and has vouched for their accuracy and completeness, and on behalf of Plains All American, I have personally reviewed the documents and interviewed Nova in order to verify the accuracy and completeness of these documents. It is based upon these inquiries and reviews that Plains All American submits the enclosed Annual Monitoring Reports for the above facilities.

If you have any questions or require further information, please contact me at (505) 441-0965.

Sincerely,

A handwritten signature in cursive script that reads "Camille Reynolds". The signature is written in black ink and is positioned above the printed name and title.

Camille Reynolds
Remediation Coordinator
Plains All American Pipeline

CC: Larry Johnson, NMOCD, Hobbs, New Mexico

Enclosure

2005
ANNUAL MONITORING REPORT

TNM 97-04
SE ¼ SE ¼ of SECTION 11, TOWNSHIP 16 SOUTH, RANGE 35 EAST
LEA COUNTY, NEW MEXICO
PLAINS EMS NUMBER: TNM 97-04
NMOCD Reference GW-0294

PREPARED FOR:

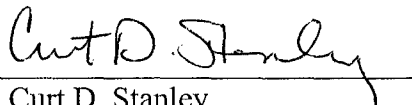
PLAINS MARKETING, L.P.
333 CLAY STREET, SUITE 1600
HOUSTON, TEXAS 77002



PREPARED BY:

NOVA Safety and Environmental
2057 Commerce
Midland, Texas 79703

March 2006


Curt D. Stanley
Project Manager



Todd K. Choban, P.G.
Vice-President Technical Services

TABLE OF CONTENTS

INTRODUCTION	1
SITE DESCRIPTION AND BACKGROUND INFORMATION	1
FIELD ACTIVITIES	2
LABORATORY RESULTS.....	3
SUMMARY.....	3
ANTICIPATED ACTIONS.....	4
LIMITATIONS.....	4
DISTRIBUTION	5

FIGURES

Figure 1 – Site Location Map

Figure 2A – Inferred Groundwater Gradient Map - March 22, 2005

2B – Inferred Groundwater Gradient Map - June 22, 2005

2C – Inferred Groundwater Gradient Map - September 21, 2005

2D – Inferred Groundwater Gradient Map - December 16, 2005

Figure 3A – Groundwater Concentration and Inferred PSH Extent Map - March 22, 2005

3B – Groundwater Concentration and Inferred PSH Extent Map - June 22, 2005

3C – Groundwater Concentration and Inferred PSH Extent Map - September 21, 2005

3D – Groundwater Concentration and Inferred PSH Extent Map - December 16, 2005

TABLES

Table 1 – 2005 Groundwater Elevation Data

Table 2 – 2005 Concentrations of BTEX in Groundwater

APPENDICES

Appendix A – Release Notification and Corrective Action (Form C-141)

ENCLOSED ON DATA DISK

2005 Annual Monitoring Report

2005 Tables 1 and 2 - Groundwater Elevation and BTEX Concentration Data

2005 Figures 1, 2A-2D, and 3A-3D

Electronic Copies of Laboratory Reports

Historic Groundwater Elevation Tables

Historic BTEX Concentration Tables

INTRODUCTION

On behalf of Plains Marketing, L.P.(Plains), NOVA Safety and Environmental (NOVA) is pleased to submit this Annual Monitoring Report in compliance with the New Mexico Oil Conservation Division (NMOCD) letter of May 1998, requiring submittal of an Annual Monitoring Report by April 1 of each year. Beginning on May 29, 2004, project management responsibilities were assumed by NOVA, having previously been managed by Environmental Technology Group, Inc (ETGI). The TNM 97-04 site (the site), which was formerly the responsibility of Texas New Mexico Pipeline Company (TNM) is now the responsibility of Plains. This report is intended to be viewed as a complete document with text, figures, tables and appendices. The report presents the results of the quarterly groundwater monitoring events conducted in calendar year 2005 only. However, historic data tables as well as 2005 laboratory analytical reports are provided on the enclosed data disk. A Site Location Map is provided as Figure 1.

Groundwater monitoring was conducted during each quarter of 2005 to assess the extent of dissolved phase constituents and the presence of Phase Separated Hydrocarbon (PSH). Each groundwater monitoring event consisted of measuring static water levels in the monitor wells, checking for the presence of PSH and the purging and sampling of each well exhibiting sufficient recharge. Monitor wells containing a thickness of PSH greater than 0.01 foot were not sampled.

SITE DESCRIPTION AND BACKGROUND INFORMATION

The site is located in the SE 1/4 of the SE 1/4 of Section 11, Township 16 South, Range 35 East in Lea County, New Mexico. Initial site investigation activities were performed for TNM by other environmental consultants. No other specifics concerning the release are currently available. The Release Notification and Corrective Action Form (C-141) is provided as Appendix A.

The initial environmental consultant installed fifteen (15) monitor wells and one (1) recovery well at the site. In December of 2002, ETGI installed two (2) additional groundwater monitor wells (MW-16 and MW-17) to further delineate the impact to groundwater at the site. Monitor wells MW-1 and MW-8 were plugged and abandoned in 2005 as per NMOCD approval granted in a letter dated June 22, 2005. There are currently fifteen (15) monitor wells (MW-2 through MW-7, and MW-9 through MW-17) and one (1) recovery well (RW-1) on site. An automated recovery system operated at the site during most of 2004. An air compressor theft resulted in the system being taken out of service in late 2004. In early 2005, the system was returned to operation until September, 2005, when the air compressor was stolen once again. The recovery system is currently out of service and manual product recovery techniques are currently being employed.

FIELD ACTIVITIES

A measurable thickness of PSH was present six (6) monitor wells (MW-2 through MW-6, and MW-9) and the recovery well (RW-1) during each quarter of the reporting period. The average thickness of PSH in monitor wells and recovery wells displaying PSH was 1.91 feet. The maximum thickness of PSH in monitor wells and recovery wells was 3.07 feet as recorded in monitor well MW-2 on February 24, 2005. PSH data for the 2005 gauging events can be found in Table 1. Approximately 532 gallons (approximately 12 barrels) of PSH was recovered from the site during the 2005 reporting period. A total of approximately 5,907 gallons (approximately 140 barrels) of product have been recovered since project inception.

Quarterly monitoring events for the reporting period were performed according to the following reduced sampling schedule, which was approved by the NMOCD in correspondence dated April 28, 2004 and amended in correspondence dated June 22, 2005.

NMOCD Approved Sampling Schedule					
MW-1	Plugged and Abandoned	MW-7	Annual	MW-13	Quarterly
MW-2	Quarterly	MW-8	Plugged and Abandoned	MW-14	Quarterly
MW-3	Quarterly	MW-9	Quarterly	MW-15	Quarterly
MW-4	Quarterly	MW-10	Annual	MW-16	Quarterly
MW-5	Quarterly	MW-11	Quarterly	MW-17	Quarterly
MW-6	Quarterly	MW-12	Annual	RW-1	Quarterly

The site monitor wells were gauged and sampled on March 22, June 22, September 21, and December 16, 2005. During each sampling event, monitor wells were purged of approximately three well volumes of water or until the wells failed to produce water. Purging was performed using a disposable polyethylene bailer for each well or electrical Grundfos Pump and dedicated tubing. Groundwater was allowed to recharge and samples were obtained using disposable Teflon samplers. Water samples were collected in clean glass containers provided by the laboratory and placed on ice in the field. Purge water was collected in a polystyrene tank and disposed of by Key Energy utilizing a licensed disposal facility (NMOCD AO SWD-730).

Locations of the monitor wells and the inferred groundwater gradient, which were constructed from measurements collected during each quarterly sampling event of 2005, are depicted on the Inferred Groundwater Gradient Maps, Figures 2A-2D. Groundwater elevation data for 2005 is provided as Table 1. Historic groundwater elevation data beginning at project inception is provided on the enclosed data disk.

The most recent Groundwater Gradient Map, Figure 2D, indicates a general gradient of approximately 0.002 feet/foot to the southeast as measured between MW-5 and MW-13. This is consistent with data presented on Figures 2A through 2C from earlier in the year. The corrected groundwater elevations ranged between 3922.26 and 3921.36 feet above mean sea level, in MW-10 on December 16, 2005 and in MW-13 on March 22, 2005, respectively.

LABORATORY RESULTS

Monitor wells MW-2 through MW-6, MW-9 and recovery well RW-1 contained PSH and were not sampled during the 2005 reporting period.

All groundwater samples collected during the reporting period were delivered to TraceAnalysis, Inc. in Lubbock, Texas for Benzene, Toluene, Ethylbenzene, and Xylene (BTEX) constituent analysis using EPA Method SW 846-8021b. Analytical results of BTEX constituent concentrations for 2005 are summarized on Table 2. Historical BTEX constituent concentrations and copies of the laboratory reports for 2005 are provided on the enclosed data disk. The quarterly groundwater analytical results are depicted on the Groundwater Concentration and Inferred PSH Extent Maps, Figures 3A-3D.

Review of laboratory analytical results of the groundwater samples obtained from the eighteen (18) wells present at the site during the 2005 monitoring period indicate benzene and BTEX constituent concentrations were below NMOCD regulatory standards in seven (7) monitor wells (MW-7, MW-10 through MW-13, MW-16 and MW-17). As previously stated, two (2) monitor wells (MW-1 and MW-8) were plugged and abandoned. Additionally, six (6) monitor wells (MW-2 through MW-6 and MW-9) and recovery well (RW-1) contained PSH during each sampling event and were not sampled. The remaining two monitor wells (MW-14 and MW-15) displayed benzene and total BTEX constituent concentrations above the NMOCD regulatory standard.

Laboratory analytical results were compared to NMOCD regulatory limits based on the New Mexico groundwater standards found in section 20.6.2.3103 of the New Mexico Administrative Code.

SUMMARY

This report presents the results of monitoring activities for the 2005 annual monitoring period. Currently, there are fifteen (15) groundwater monitor wells (MW-2 through MW-17, excluding MW-8) and one (1) product recovery well (RW-1) on-site. Manual product recovery occurs on a weekly schedule. Groundwater elevation contours generated from water level measurements acquired indicated a general gradient of approximately 0.002 feet/foot to the southeast.

As discussed above, six (6) monitor wells and the recovery well (RW-1) contained measurable PSH thicknesses during each quarterly sampling event of 2005. Approximately 532.5 gallons (14 barrels) of PSH was recovered from the site during the 2005 reporting period. A total of approximately 5,907 gallons (approximately 140 barrels) of product have been recovered since project inception. The average thickness of PSH in monitor wells and recovery wells during the reporting period was 1.91 feet.

Seven (7) monitor well locations displayed benzene and total BTEX constituent concentrations below the appropriate NMOCD regulatory standards. Six (6) monitor wells and the recovery well RW-1 contained PSH and were not sampled during the 2005 reporting period. Two (2) monitor wells were plugged and abandoned during 2005 and were not sampled. The remaining two (2)

locations displayed concentrations of both benzene and total BTEX constituents above the NMOCD regulatory standards.

ANTICIPATED ACTIONS

Plains is requesting permission from the NMOCD to plug and abandon monitor well MW-17. The well has not exhibited detectable concentrations of BTEX constituents in twelve (12) consecutive sampling events. Up gradient control is provided by monitor well MW-16 and down gradient control is provided by monitor well MW-11.

It is also requested that monitor well MW-16 be placed on a semi-annual sampling schedule based on at least seven (7) consecutive sampling events in which concentrations of dissolved phase impact have been below NMOCD regulatory standards. Additionally, Plains requests that monitor well MW-11 be placed on an annual sampling schedule based on eight (8) consecutive events in which concentrations of dissolved phase impact have been below NMOCD regulatory standards. Historic analytical results are presented on the enclosed data disk.

There are no plans, at this time, to return the automated recovery system to operation based on the limited thicknesses of PSH present in the site's monitor and recovery wells.

LIMITATIONS

NOVA has prepared this Annual Monitoring Report to the best of its ability. No other warranty, expressed or implied, is made or intended.

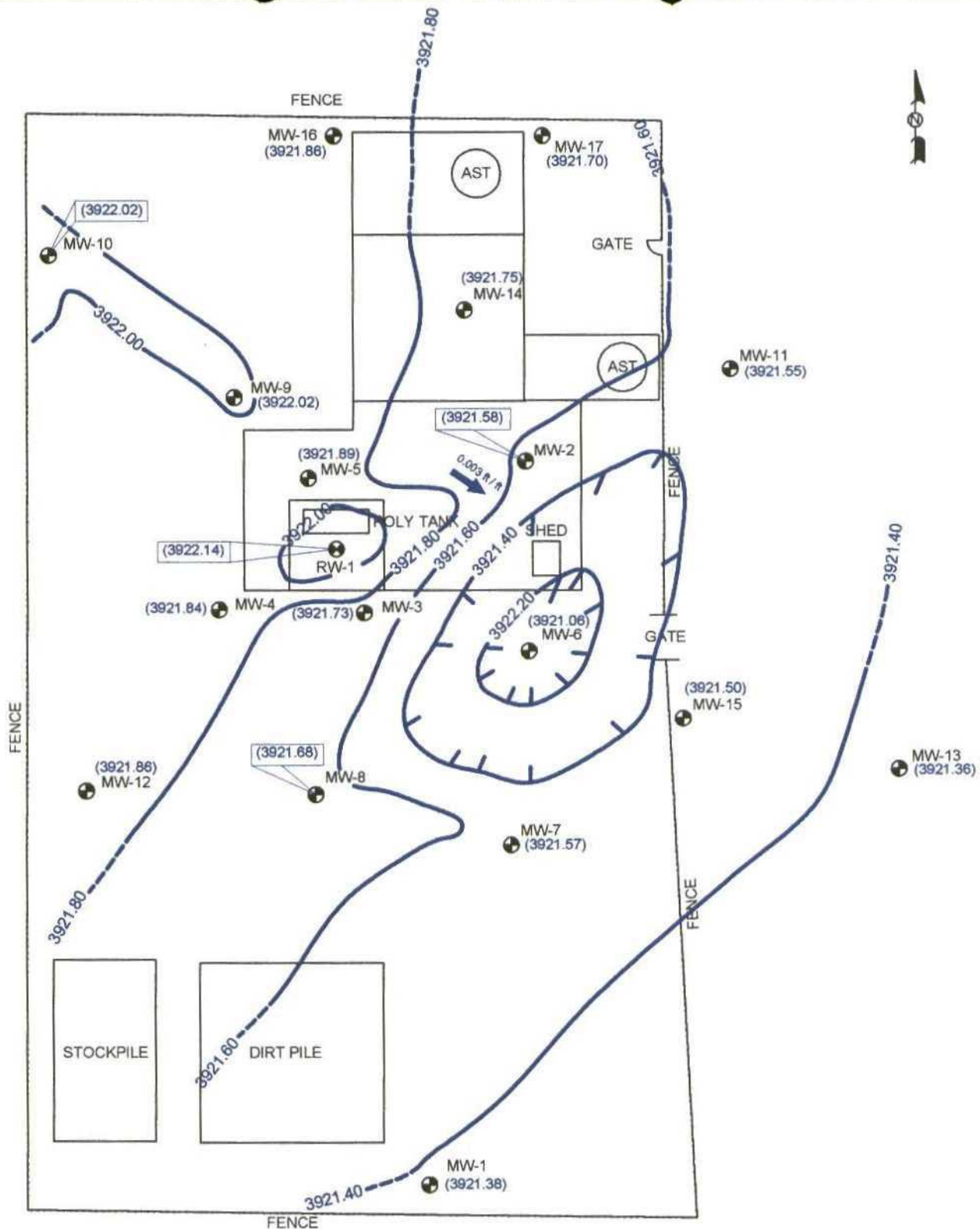
NOVA has examined and relied upon documents referenced in the report and has relied on oral statements made by certain individuals. NOVA has not conducted an independent examination of the facts contained in referenced materials and statements. We have presumed the genuineness of the documents and that the information provided in documents or statements is true and accurate. NOVA has prepared this report, in a professional manner, using the degree of skill and care exercised by similar environmental consultants. NOVA also notes that the facts and conditions referenced in this report may change over time and the conclusions and recommendations set forth herein are applicable only to the facts and conditions as described at the time of this report.

This report has been prepared for the benefit of Plains. The information contained in this report, including all exhibits and attachments, may not be used by any other party without the express consent of NOVA and/or Plains.

DISTRIBUTION

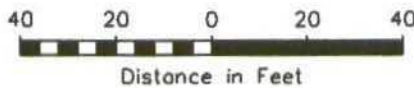
- Copy 1 Ed Martin
New Mexico Energy, Minerals and Natural Resources Department
Oil Conservation Division
1220 South St. Francis Drive
Santa Fe, NM 87505
- Copy 2: Larry Johnson and Paul Sheeley
New Mexico Energy, Minerals and Natural Resources Department
Oil Conservation Division, District 1
1625 French Drive
Hobbs, NM 88240
- Copy 3: Camille Reynolds
Plains Marketing, L.P.
3112 Highway 82
Lovington, NM
cjreynolds@paalp.com
- Copy 4: Jeff Dann
Plains Marketing, L.P.
333 Clay Street
Suite 1600
Houston, TX 77002
jpdann@paalp.com
- Copy 5: NOVA Safety and Environmental
2057 Commerce Street
Midland, TX 79703
cstanley@novatraining.cc

Figures



NOTE:

- Contour Interval = 0.20'
- GW Gradient Measured Between MW-5 and MW-13



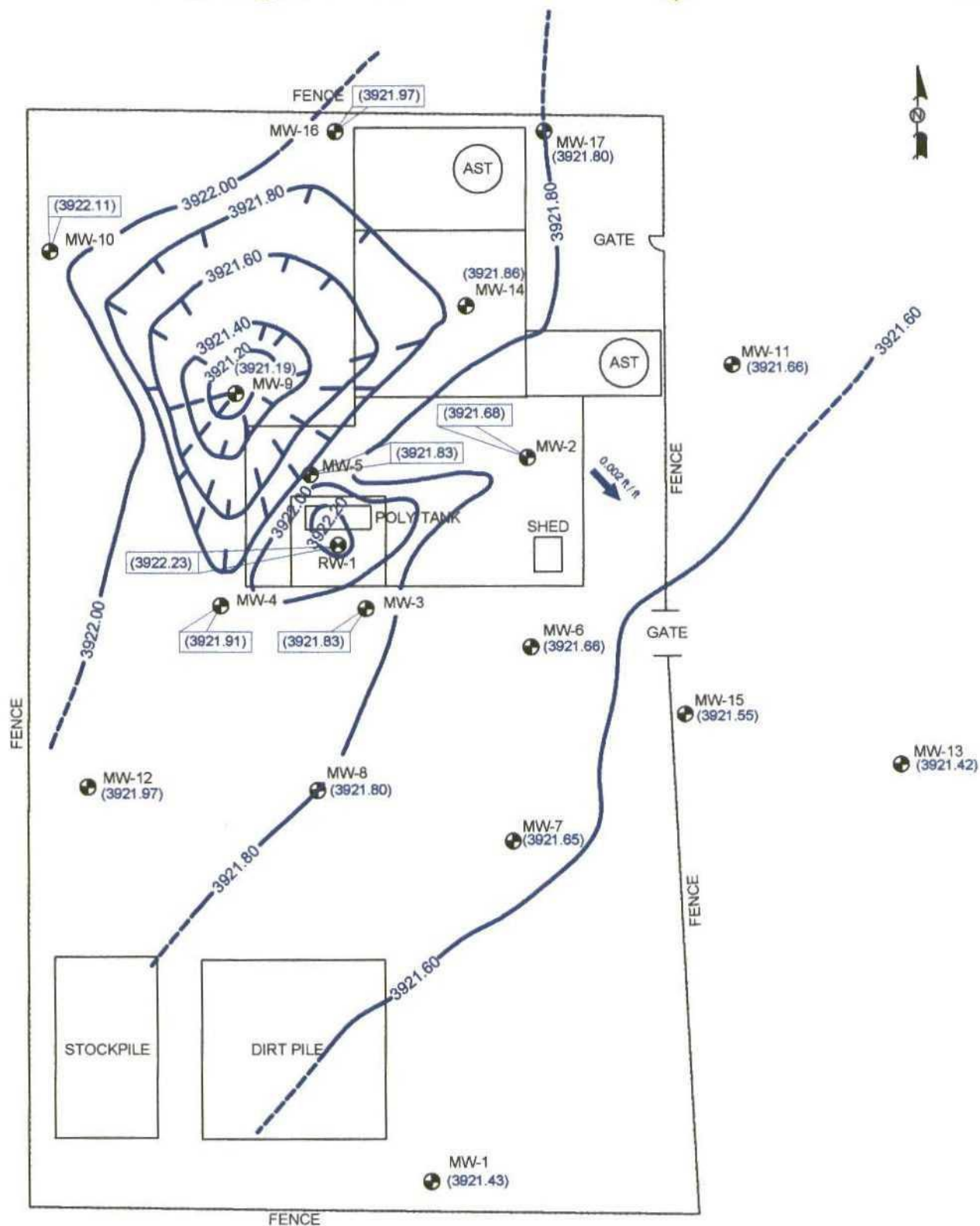
LEGEND:

- Monitor Well Location
- ⊕ Recovery Well Location
- Groundwater Contour Line
- (3921.36) Groundwater Elevation (feet)
- 0.003 ft/ft Groundwater Gradient Direction and Magnitude

Figure 2A
Inferred Groundwater
Gradient Map
(3/22/05)
Plains Marketing, L.P.
TNM 97-04
Lea County, NM

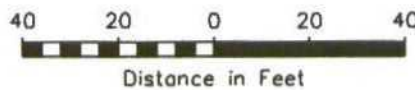
NOVA Safety and Environmental

Scale: 1" = 40'	Drawn By: DPM	Prepared By: CDS
May 6, 2005	NW1/4 SE1/4 Sec 18 T18S R36E	
		Lat N32° 44' 50.3" Long W103° 23' 38.5"



NOTE:

- Contour Interval = 0.20'
- GW Gradient Measured Between MW-5 and MW-13



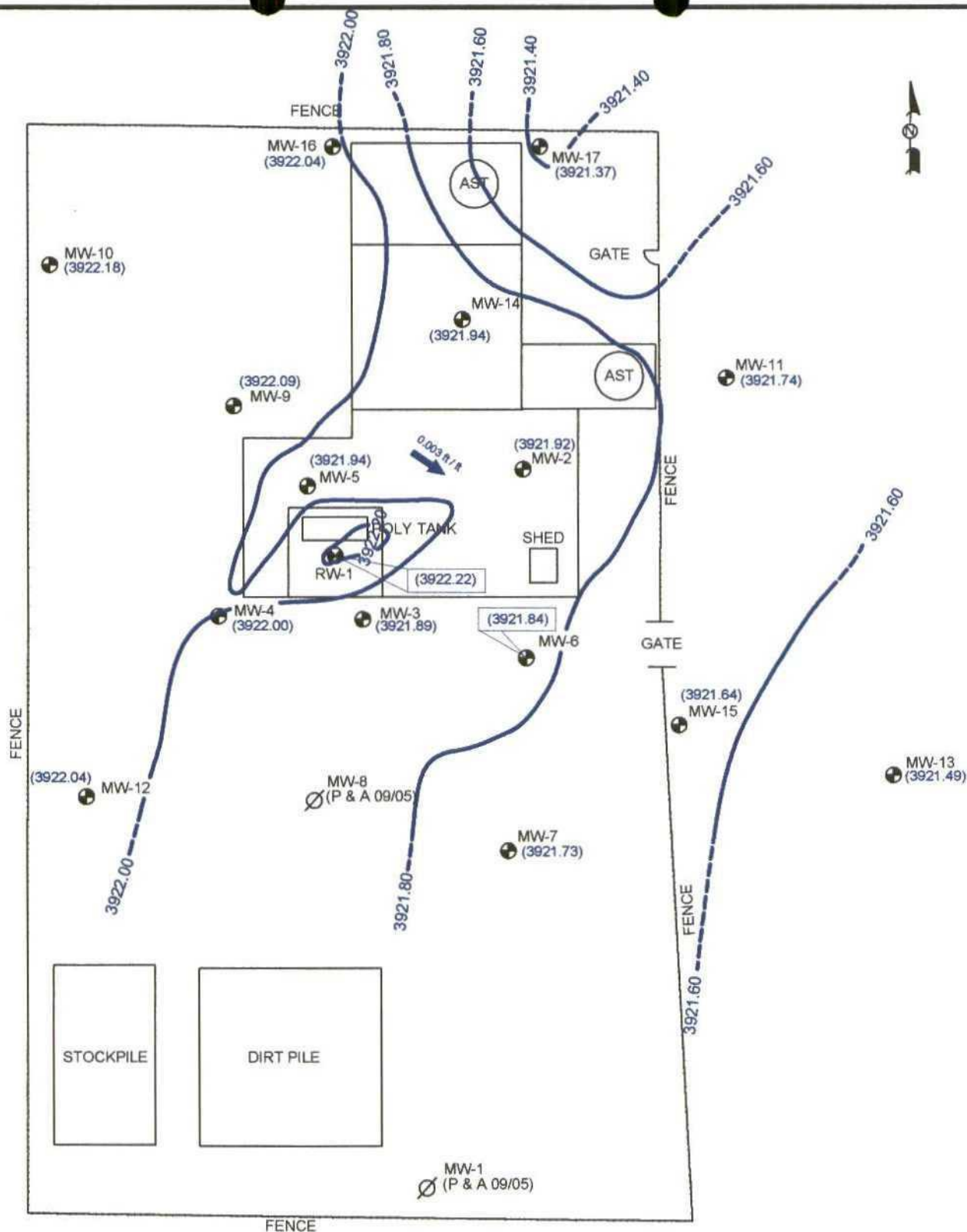
LEGEND:

- Monitor Well Location
- ⊕ Recovery Well Location
- Groundwater Contour Line
- (3921.20) Groundwater Elevation (feet)
- 0.002 ft/ft Groundwater Gradient Direction and Magnitude

Figure 2B
Inferred Groundwater
Gradient Map
(6/22/05)
Plains Marketing, L.P.
TNM 97-04
Lea County, NM

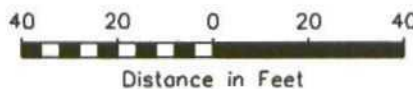
NOVA Safety and Environmental

Scale: 1" = 40'	Drawn By: DPM	Prepared By: CDS
June 30, 2005	NW1/4 SE1/4 Sec 18 T18S R36E	
		Lat N32° 44' 50.3" Long W103° 23' 38.5"



NOTE:

- Contour Interval = 0.20'
- GW Gradient Measured Between MW-5 and MW-13
- MW-1 and MW-8 Were Plugged and Abandoned 09/05 Per NMOCD Approval



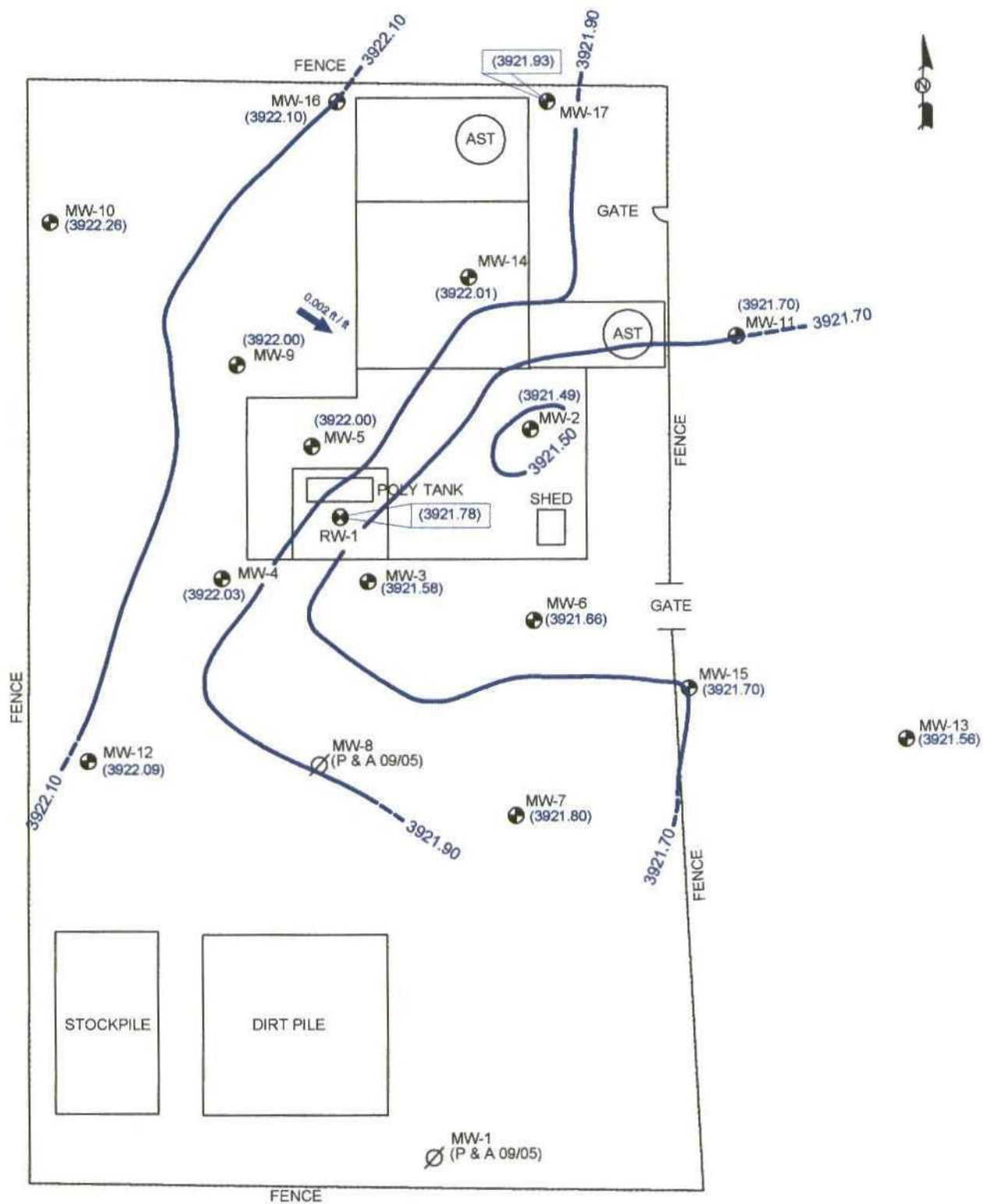
LEGEND:

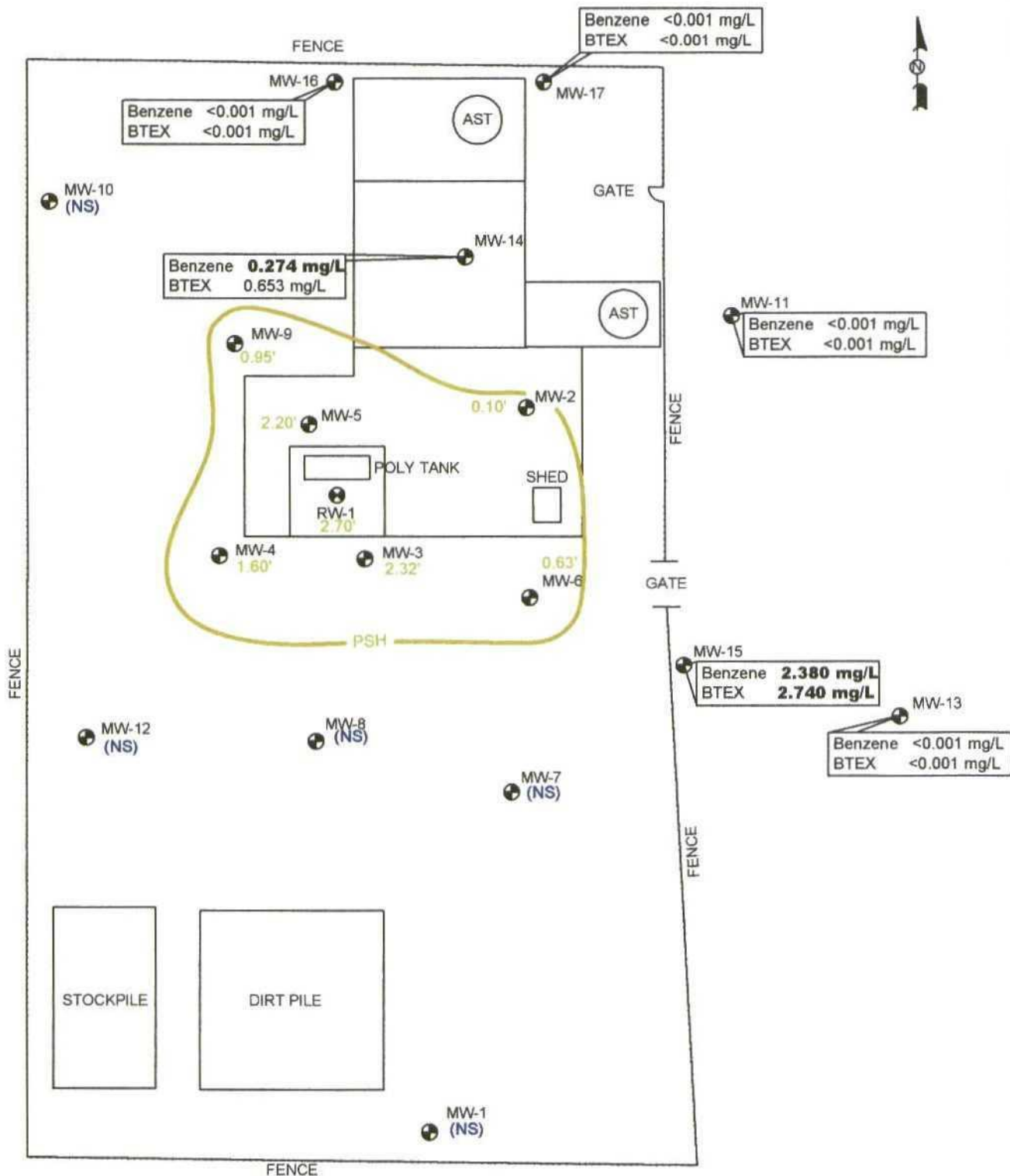
- Monitor Well Location
- Recovery Well Location
- P & A Well Location
- (3922.04) Groundwater Elevation (feet)
- 0.003 ft/ft Groundwater Gradient Direction and Magnitude
- Groundwater Contour Line

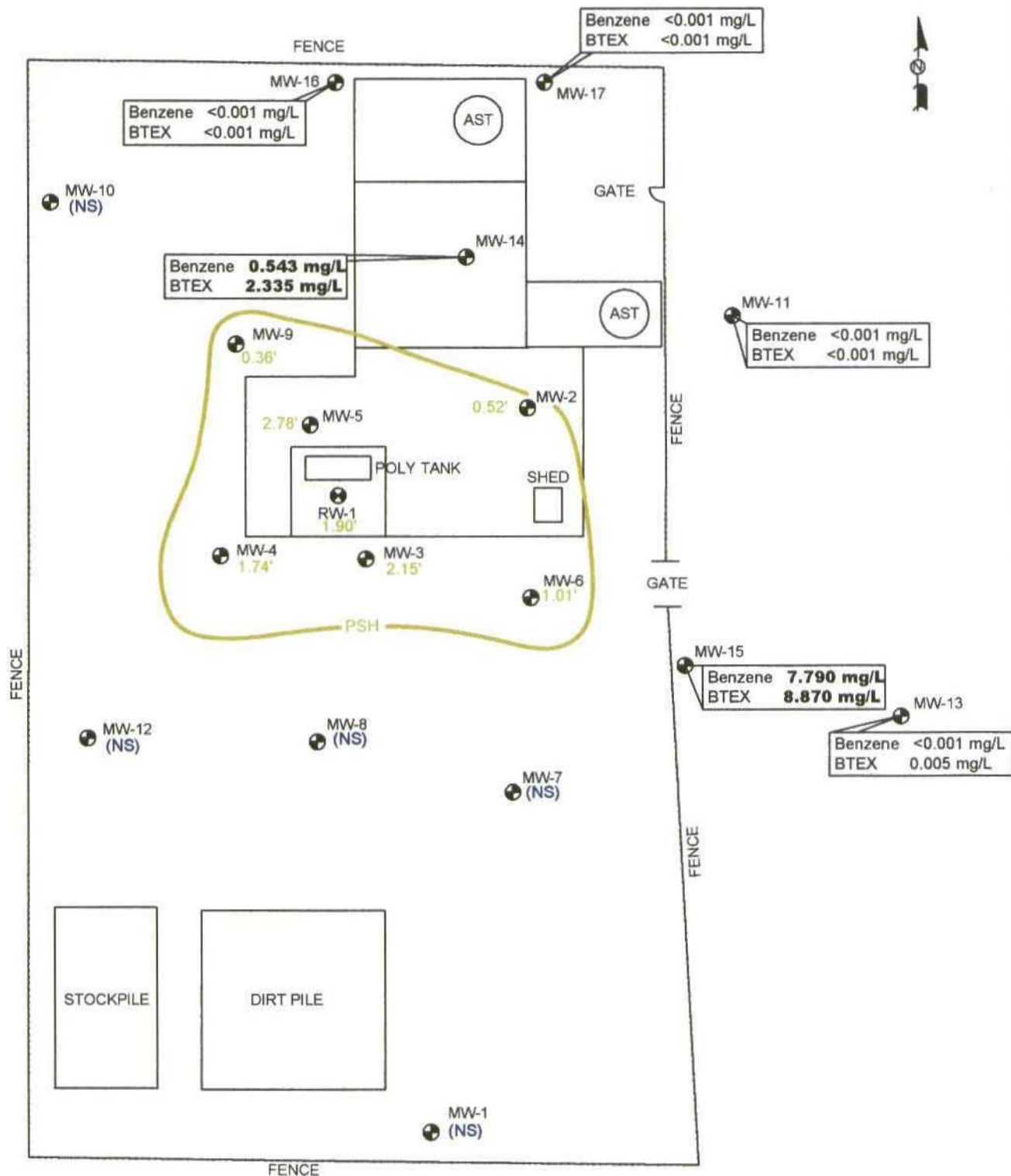
Figure 2C
Inferred Groundwater
Gradient Map
(9/21/05)
Plains Marketing, L.P.
TNM 97-04
Lea County, NM

NOVA Safety and Environmental

Scale: 1" = 40'	Drawn By: DPM	Prepared By: CDS
September 23, 2005	NW1/4 SE1/4 Sec 18 T18S R36E	
		Lat N32° 44' 50.3" Long W103° 23' 38.5"

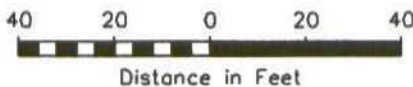






NOTE:

- **BOLD** Indicates Concentration Above NMOC Regulatory Limit
- MWs 1, 7, 8, 10, and 12 Are On Reduced Sampling Schedule.



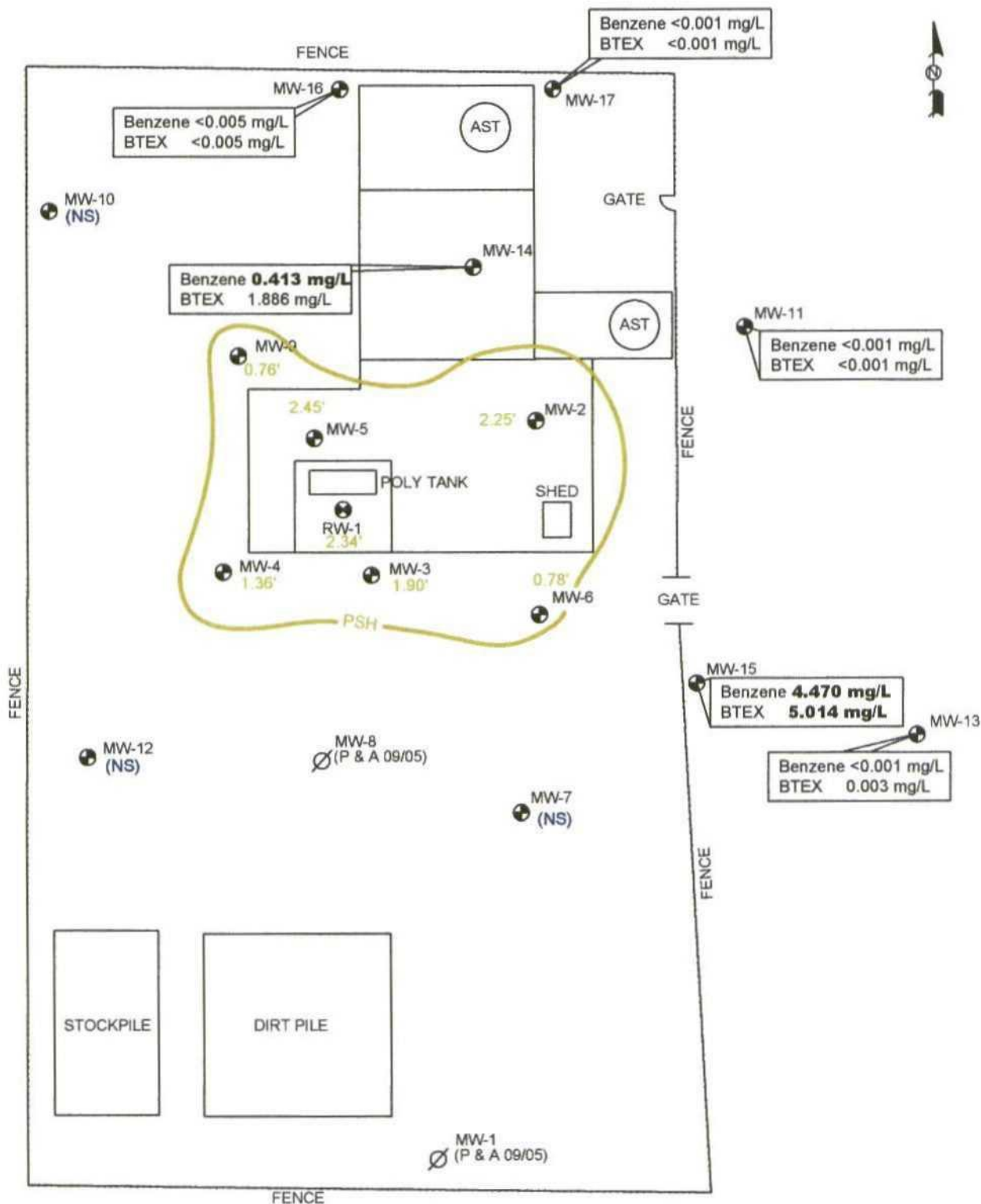
LEGEND:

- Monitor Well Location
- ⊕ Recovery Well Location
- Soil Boring Location
- Inferred PSH Extent
- <0.001 Constituent Concentration (mg/L)
- 1.01' Thickness of PSH (feet)
- (NS) Not Sampled

Figure 3B
Groundwater Concentration
and Inferred PSH Extent Map
(6/22/05)
Plains Marketing, L.P.
TNM 97-04
Lea County, NM

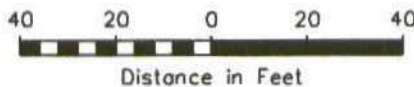
NOVA Safety and Environmental

Scale: 1" = 40'	Drawn By: DPM	Prepared By: CDS
July 22, 2005	NW1/4 SE1/4 Sec 16 T18S R36E	
		Lat N32° 44' 50.3" Long W103° 23' 38.5"



NOTE:

- BOLD Indicates Concentration Above NMOC Regulatory Limit
- MWs 7, 10, and 12 Are On Reduced Sampling Schedule.
- MW - 1 and MW-8 Were Plugged and Abandoned September 2005 Per NMOC Approval.



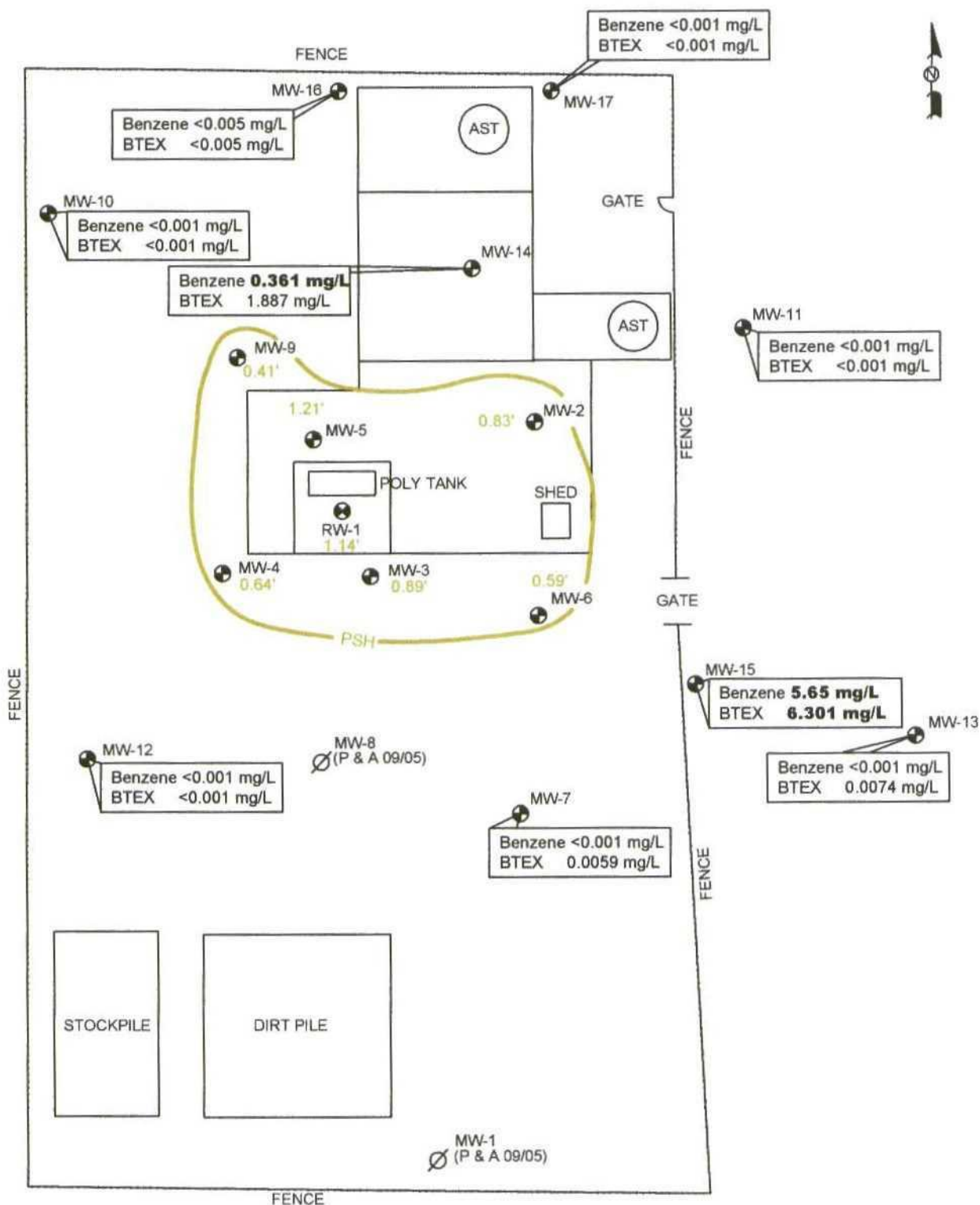
LEGEND:

- Monitor Well Location
- ⊕ Recovery Well Location
- ⊙ P & A Well Location
- Soil Boring Location
- Inferred PSH Extent
- 1.90' Thickness of PSH (feet)
- (NS) Not Sampled
- <0.001 Constituent Concentration (mg/L)

Figure 3C
Groundwater Concentration
and Inferred PSH Extent Map
(9/21/05)
Plains Marketing, L.P.
TNM 97-04
Lea County, NM

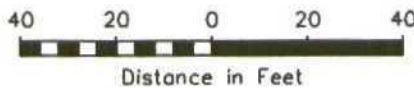
NOVA Safety and Environmental

Scale: 1" = 40'	Drawn By: DPM	Prepared By: CDS
October 28, 2005	NW1/4 SE1/4 Sec 18 T18S R36E	
	Lat: N32° 44' 50.3" Long: W103° 23' 38.5"	



NOTE:

- **BOLD** Indicates Concentration Above NMOC Regulatory Limit
- MWs 7, 10, and 12 Are On Reduced Sampling Schedule.
- MW - 1 and MW-8 Were Plugged and Abandoned September 2005 Per NMOC Approval.



LEGEND:

- Monitor Well Location
- Recovery Well Location
- P & A Well Location
- Soil Boring Location
- Inferred PSH Extent
- 0.41' Thickness of PSH (feet)
- <0.001 Constituent Concentration (mg/L)

Figure 3D
Groundwater Concentration
and Inferred PSH Extent Map
(12/16/05)
Plains Marketing, L.P.
TNM 97-04
Lea County, NM

NOVA Safety and Environmental

Scale 1" = 40'	Drawn By DPM	Prepared By: CDS
January 13, 2006	NW1/4 SE1/4 Sec 18 T18S R36E	
	Lat. N32° 44' 50.3" Long. W103° 23' 38.5"	

Tables

TABLE 1
2005 GROUNDWATER ELEVATION DATA

PLAINS MARKETING, L.P.
TNM 97-04 (TOWNSEND)
LEA COUNTY, NEW MEXICO

WELL NUMBER	DATE MEASURED	TOP OF CASING ELEVATION	DEPTH TO PRODUCT	DEPTH TO WATER	PSH THICKNESS	CORRECTED GROUNDWATER ELEVATION
MW-1	03/22/05	3974.18	-	52.80	0.00	3921.38
	06/22/05	3974.18	-	52.75	0.00	3921.43
	09/14/05	Plugged and Abandoned				
MW-2	01/10/05	3974.62	52.57	55.40	2.83	3921.63
	01/18/05	3974.62	52.63	55.17	2.54	3921.61
	01/18/05	3974.62	52.78	54.33	1.55	3921.61
	01/25/05	3974.62	52.51	55.35	2.84	3921.68
	01/27/05	3974.62	52.55	55.22	2.67	3921.67
	02/01/05	3974.62	52.52	55.55	3.03	3921.65
	02/07/05	3974.62	52.50	55.34	2.84	3921.69
	02/11/05	3974.62	52.50	55.23	2.73	3921.71
	02/15/05	3974.62	52.49	55.25	2.76	3921.72
	02/22/05	3974.62	52.46	55.44	2.98	3921.71
	02/24/05	3974.62	52.43	55.50	3.07	3921.73
	03/03/05	3974.62	52.43	55.41	2.98	3921.74
	03/09/05	3974.62	52.43	55.35	2.92	3921.75
	03/22/05	3974.62	53.03	53.13	0.10	3921.58
	03/24/05	3974.62	53.03	53.13	0.10	3921.58
	03/31/05	3974.62	53.05	53.12	0.07	3921.56
	06/22/05	3974.62	52.86	53.38	0.52	3921.68
	07/21/05	3974.62	52.73	53.24	0.51	3921.81
	08/03/05	3974.62	52.45	54.54	2.09	3921.86
	08/12/05	3974.62	52.42	54.58	2.16	3921.88
	08/15/05	3974.62	52.48	54.40	1.92	3921.85
	08/22/05	3974.62	52.41	54.50	2.09	3921.90
	08/30/05	3974.62	52.40	54.64	2.24	3921.88
	09/07/05	3974.62	52.38	54.62	2.24	3921.90
	09/14/05	3974.62	52.32	54.63	2.31	3921.95
	09/20/05	3974.62	52.39	54.48	2.09	3921.92
	09/21/05	3974.62	52.36	54.61	2.25	3921.92
	09/28/05	3974.62	52.38	54.60	2.22	3921.91
	10/06/05	3974.62	52.32	54.85	2.53	3921.92
	10/13/05	3974.62	52.32	54.85	2.53	3921.92
	10/20/05	3974.62	52.32	54.84	2.52	3921.92
	10/26/05	3974.62	52.33	54.83	2.50	3921.92
	11/03/05	3974.62	52.28	54.80	2.52	3921.96
	11/10/05	3974.62	52.29	54.79	2.50	3921.96
	11/16/05	3974.62	52.31	54.79	2.48	3921.94
	11/23/05	3974.62	52.33	54.75	2.42	3921.93
	11/28/05	3974.62	52.27	54.83	2.56	3921.97
	12/05/05	3974.62	52.30	54.72	2.42	3921.96
	12/12/05	3974.62	52.29	54.70	2.41	3921.97
	12/16/05	3974.62	53.01	53.84	0.83	3921.49
	12/19/05	3974.62	52.35	54.76	2.41	3921.91
	12/29/05	3974.62	52.26	54.82	2.56	3921.98

TABLE 1
2005 GROUNDWATER ELEVATION DATA

PLAINS MARKETING, L.P.
TNM 97-04 (TOWNSEND)
LEA COUNTY, NEW MEXICO

WELL NUMBER	DATE MEASURED	TOP OF CASING ELEVATION	DEPTH TO PRODUCT	DEPTH TO WATER	PSH THICKNESS	CORRECTED GROUNDWATER ELEVATION
MW-3	01/10/05	3974.60	52.72	54.54	1.82	3921.61
	01/18/05	3974.60	52.70	54.70	2.00	3921.60
	01/18/05	3974.60	52.81	53.85	1.04	3921.63
	01/25/05	3974.60	52.65	54.58	1.93	3921.66
	01/27/05	3974.60	52.70	54.40	1.70	3921.65
	02/01/05	3974.60	52.66	54.47	1.81	3921.67
	02/07/05	3974.60	52.60	54.49	1.89	3921.72
	02/11/05	3974.60	52.63	54.38	1.75	3921.71
	02/15/05	3974.60	52.64	54.36	1.72	3921.70
	02/22/05	3974.60	52.50	54.89	2.39	3921.74
	02/24/05	3974.60	52.51	54.85	2.34	3921.74
	03/03/05	3974.60	52.49	54.90	2.41	3921.75
	03/09/05	3974.60	52.49	54.92	2.43	3921.75
	03/22/05	3974.60	52.52	54.84	2.32	3921.73
	03/24/05	3974.60	52.52	54.84	2.32	3921.73
	03/31/05	3974.60	DAMAGED			
	06/22/05	3974.60	52.45	54.60	2.15	3921.83
	07/21/05	3974.60	52.38	54.60	2.22	3921.89
	08/03/05	3974.60	52.40	54.52	2.12	3921.88
	08/12/05	3974.60	52.39	53.43	1.04	3922.05
	08/15/05	3974.60	52.44	54.27	1.83	3921.89
	08/22/05	3974.60	52.43	54.34	1.91	3921.88
	08/30/05	3974.60	52.39	54.38	1.99	3921.91
	09/07/05	3974.60	52.40	54.39	1.99	3921.90
	09/14/05	3974.60	52.43	54.30	1.87	3921.89
	09/20/05	3974.60	52.40	54.20	1.80	3921.93
	09/21/05	3974.60	52.43	54.33	1.90	3921.89
	09/28/05	3974.60	52.39	54.36	1.97	3921.91
	10/06/05	3974.60	52.30	54.68	2.38	3921.94
	10/13/05	3974.60	52.30	54.66	2.36	3921.95
	10/20/05	3974.60	52.31	54.60	2.29	3921.95
	10/26/05	3974.60	52.32	54.60	2.28	3921.94
	11/03/05	3974.60	52.28	54.59	2.31	3921.97
	11/10/05	3974.60	52.27	54.62	2.35	3921.98
	11/16/05	3974.60	52.31	54.58	2.27	3921.95
	11/23/05	3974.60	52.36	54.50	2.14	3921.92
	11/28/05	3974.60	52.25	54.60	2.35	3922.00
	12/05/05	3974.60	52.30	54.49	2.19	3921.97
	12/12/05	3974.60	52.29	54.51	2.22	3921.98
	12/16/05	3974.60	52.89	53.78	0.89	3921.58
	12/19/05	3974.60	52.36	54.53	2.17	3921.91
	12/29/05	3974.60	52.28	54.60	2.32	3921.97
MW-4	01/10/05	3974.53	52.14	54.40	2.26	3922.05
	01/18/05	3974.53	52.59	54.15	1.56	3921.71
	01/18/05	3974.53	52.68	53.51	0.83	3921.73

TABLE 1
2005 GROUNDWATER ELEVATION DATA

PLAINS MARKETING, L.P.
TNM 97-04 (TOWNSEND)
LEA COUNTY, NEW MEXICO

WELL NUMBER	DATE MEASURED	TOP OF CASING ELEVATION	DEPTH TO PRODUCT	DEPTH TO WATER	PSH THICKNESS	CORRECTED GROUNDWATER ELEVATION
MW-4	01/25/05	3974.53	52.54	54.10	1.56	3921.76
	01/27/05	3974.53	52.55	53.90	1.35	3921.78
	02/01/05	3974.53	52.56	53.93	1.37	3921.76
	02/07/05	3974.53	52.50	54.01	1.51	3921.80
	02/11/05	3974.53	52.50	53.98	1.48	3921.81
	02/15/05	3974.53	52.53	53.96	1.43	3921.79
	02/22/05	3974.53	52.47	54.10	1.63	3921.82
	02/24/05	3974.53	52.50	54.15	1.65	3921.78
	03/03/05	3974.53	52.46	54.13	1.67	3921.82
	03/09/05	3974.53	52.46	54.92	2.46	3921.70
	03/22/05	3974.53	52.45	54.05	1.60	3921.84
	03/24/05	3974.53	52.45	54.05	1.60	3921.84
	03/31/05	3974.53	52.47	54.03	1.56	3921.83
	06/22/05	3974.53	52.36	54.10	1.74	3921.91
	07/21/05	3974.53	52.89	53.64	0.75	3921.53
	08/03/05	3974.53	52.33	52.80	0.47	3922.13
	08/12/05	3974.53	52.32	53.40	1.08	3922.05
	08/15/05	3974.53	52.35	53.60	1.25	3921.99
	08/22/05	3974.53	52.34	53.66	1.32	3921.99
	08/30/05	3974.53	52.32	53.70	1.38	3922.00
	09/07/05	3974.53	52.32	53.92	1.60	3921.97
	09/14/05	3974.53	52.30	53.68	1.38	3922.02
	09/20/05	3974.53	52.33	53.59	1.26	3922.01
	09/21/05	3974.53	52.33	53.69	1.36	3922.00
	09/28/05	3974.53	52.30	53.70	1.40	3922.02
	10/06/05	3974.53	52.27	53.85	1.58	3922.02
	10/13/05	3974.53	52.28	53.81	1.53	3922.02
	10/20/05	3974.53	52.30	53.75	1.45	3922.01
	10/26/05	3974.53	52.28	53.75	1.47	3922.03
	11/03/05	3974.53	52.25	53.75	1.50	3922.06
	11/10/05	3974.53	52.24	53.75	1.51	3922.06
	11/16/05	3974.53	52.27	53.72	1.45	3922.04
	11/23/05	3974.53	52.30	53.68	1.38	3922.02
	11/28/05	3974.53	52.23	53.75	1.52	3922.07
	12/05/05	3974.53	52.28	53.65	1.37	3922.04
	12/12/05	3974.53	52.27	53.68	1.41	3922.05
	12/16/05	3974.53	52.40	53.04	0.64	3922.03
	12/19/05	3974.53	52.30	53.60	1.30	3922.04
	12/29/05	3974.53	52.25	53.71	1.46	3922.06
MW-5	01/10/05	3974.27	52.20	54.68	2.48	3921.70
	01/18/05	3974.27	52.26	54.65	2.39	3921.65
	01/18/05	3974.27	sheen	52.40	0.00	3921.87
	01/25/05	3974.27	52.17	54.70	2.53	3921.72
	01/27/05	3974.27	52.18	54.57	2.39	3921.73
	02/01/05	3974.27	52.14	54.71	2.57	3921.74

TABLE 1
2005 GROUNDWATER ELEVATION DATA

PLAINS MARKETING, L.P.
TNM 97-04 (TOWNSEND)
LEA COUNTY, NEW MEXICO

WELL NUMBER	DATE MEASURED	TOP OF CASING ELEVATION	DEPTH TO PRODUCT	DEPTH TO WATER	PSH THICKNESS	CORRECTED GROUNDWATER ELEVATION
MW-5	02/07/05	3974.27	52.10	54.67	2.57	3921.78
	02/11/05	3974.27	52.11	54.65	2.54	3921.78
	02/15/05	3974.27	52.09	54.63	2.54	3921.80
	02/22/05	3974.27	52.10	54.60	2.50	3921.80
	02/24/05	3974.27	52.08	54.58	2.50	3921.82
	03/03/05	3974.27	52.02	54.89	2.87	3921.82
	03/09/05	3974.27	52.03	54.89	2.86	3921.81
	03/22/05	3974.27	52.05	54.25	2.20	3921.89
	03/24/05	3974.27	52.05	54.25	2.20	3921.89
	03/31/05	3974.27	52.08	54.21	2.13	3921.87
	06/22/05	3974.27	52.02	54.80	2.78	3921.83
	07/21/05	3974.27	51.94	54.57	2.63	3921.94
	08/03/05	3974.27	51.97	54.44	2.47	3921.93
	08/30/05	3974.27	51.96	54.45	2.49	3921.94
	09/20/05	3974.27	51.94	54.39	2.45	3921.96
	09/28/05	3974.27	51.92	54.39	2.47	3921.98
	10/06/05	3974.27	51.86	54.64	2.78	3921.99
	10/13/05	3974.27	51.89	54.63	2.74	3921.97
	10/20/05	3974.27	51.89	54.60	2.71	3921.97
	10/26/05	3974.27	51.88	54.89	3.01	3921.94
	11/16/05	3974.27	51.86	54.58	2.72	3922.00
	11/23/05	3974.27	51.93	54.55	2.62	3921.95
	12/12/05	3974.27	51.83	54.54	2.71	3922.03
	12/16/05	3974.27	51.99	53.20	1.21	3922.10
	12/19/05	3974.27	51.89	54.80	2.91	3921.94
	12/29/05	3974.27	51.94	54.57	2.63	3921.94
MW-6	01/10/05	3974.72	53.02	54.20	1.18	3921.52
	01/18/05	3974.72	52.96	54.49	1.53	3921.53
	01/18/05	3974.72	53.14	53.52	0.38	3921.52
	01/25/05	3974.72	53.08	53.78	0.70	3921.54
	01/27/05	3974.72	53.21	53.42	0.21	3921.48
	02/01/05	3974.72	53.19	53.51	0.32	3921.48
	02/07/05	3974.72	53.14	53.54	0.40	3921.52
	02/11/05	3974.72	53.15	53.55	0.40	3921.51
	02/15/05	3974.72	53.10	53.52	0.42	3921.56
	02/22/05	3974.72	53.09	53.58	0.49	3921.56
	02/24/05	3974.72	53.08	53.65	0.57	3921.55
	03/03/05	3974.72	53.02	53.61	0.59	3921.61
	03/09/05	3974.72	53.02	53.64	0.62	3921.61
	03/22/05	3974.72	53.57	54.20	0.63	3921.06
	03/24/05	3974.72	53.57	54.20	0.63	3921.06
	03/31/05	3974.72	53.60	54.20	0.60	3921.03
	06/22/05	3974.72	52.91	53.92	1.01	3921.66
	07/21/05	3974.72	52.80	53.80	1.00	3921.77
	08/03/05	3974.72	52.82	53.70	0.88	3921.77

TABLE 1
2005 GROUNDWATER ELEVATION DATA

PLAINS MARKETING, L.P.
TNM 97-04 (TOWNSEND)
LEA COUNTY, NEW MEXICO

WELL NUMBER	DATE MEASURED	TOP OF CASING ELEVATION	DEPTH TO PRODUCT	DEPTH TO WATER	PSH THICKNESS	CORRECTED GROUNDWATER ELEVATION
MW-6	08/12/05	3974.72	52.87	53.62	0.75	3921.74
	08/15/05	3974.72	52.91	53.30	0.39	3921.75
	08/22/05	3974.72	52.70	53.69	0.99	3921.87
	08/30/05	3974.72	DID NOT GAUGE			
	09/07/05	3974.72	52.67	54.31	1.64	3921.80
	09/14/05	3974.72	52.78	53.31	0.53	3921.86
	09/20/05	3974.72	52.75	53.91	1.16	3921.80
	09/21/05	3974.72	52.76	53.54	0.78	3921.84
	09/28/05	3974.72	52.70	54.00	1.30	3921.83
	10/06/05	3974.72	52.80	53.66	0.86	3921.79
	10/13/05	3974.72	52.80	53.51	0.71	3921.81
	10/20/05	3974.72	52.84	53.81	0.97	3921.73
	10/26/05	3974.72	52.83	53.42	0.59	3921.80
	11/03/05	3974.72	52.73	53.70	0.97	3921.84
	11/10/05	3974.72	52.68	53.99	1.31	3921.84
	11/16/05	3974.72	52.79	53.50	0.71	3921.82
	11/23/05	3974.72	52.80	53.45	0.65	3921.82
	11/28/05	3974.72	52.69	53.76	1.07	3921.87
	12/05/05	3974.72	52.80	53.53	0.73	3921.81
	12/12/05	3974.72	52.76	53.56	0.80	3921.84
	12/16/05	3974.72	52.97	53.56	0.59	3921.66
	12/19/05	3974.72	52.81	53.48	0.67	3921.81
	12/29/05	3974.72	52.79	53.53	0.74	3921.82
MW-7	03/22/05	3974.60	-	53.03	0.00	3921.57
	06/22/05	3974.60	-	52.95	0.00	3921.65
	09/21/05	3974.60	-	52.87	0.00	3921.73
	12/16/05	3974.60	-	52.80	0.00	3921.80
MW-8	03/22/05	3974.48	-	52.80	0.00	3921.68
	06/22/05	3974.48	-	52.68	0.00	3921.80
	09/14/05	Plugged and Abandoned				
MW-9	01/10/05	3975.06	53.34	53.81	0.47	3921.65
	01/18/05	3975.06	53.30	53.90	0.60	3921.67
	01/25/05	3975.06	53.25	54.05	0.80	3921.69
	01/27/05	3975.06	53.33	53.51	0.18	3921.70
	02/01/05	3975.06	53.22	53.66	0.44	3921.77
	02/07/05	3975.06	53.19	53.60	0.41	3921.81
	02/11/05	3975.06	53.20	53.59	0.39	3921.80
	02/15/05	3975.06	53.05	53.55	0.50	3921.94
	02/22/05	3975.06	53.20	53.59	0.39	3921.80
	02/24/05	3975.06	53.05	53.70	0.65	3921.91
	03/03/05	3975.06	53.13	53.78	0.65	3921.83
	03/09/05	3975.06	53.13	53.78	0.65	3921.83
	03/22/05	3975.06	52.90	53.85	0.95	3922.02

TABLE 1
2005 GROUNDWATER ELEVATION DATA

PLAINS MARKETING, L.P.
TNM 97-04 (TOWNSEND)
LEA COUNTY, NEW MEXICO

WELL NUMBER	DATE MEASURED	TOP OF CASING ELEVATION	DEPTH TO PRODUCT	DEPTH TO WATER	PSH THICKNESS	CORRECTED GROUNDWATER ELEVATION
MW-9	03/24/05	3975.06	52.90	53.85	0.95	3922.02
	03/31/05	3975.06	52.92	53.76	0.84	3922.01
	06/22/05	3975.06	53.82	54.18	0.36	3921.19
	07/21/05	3975.06	52.94	53.55	0.61	3922.03
	08/03/05	3975.06	52.87	53.86	0.99	3922.04
	08/12/05	3975.06	52.92	53.63	0.71	3922.03
	08/15/05	3975.06	52.92	53.48	0.56	3922.06
	08/22/05	3975.06	52.87	53.64	0.77	3922.07
	08/30/05	3975.06	52.80	53.97	1.17	3922.08
	09/07/05	3975.06	52.83	53.74	0.91	3922.09
	09/14/05	3975.06	52.85	53.40	0.55	3922.13
	09/20/05	3975.06	52.80	53.90	1.10	3922.10
	09/21/05	3975.06	52.86	53.62	0.76	3922.09
	09/28/05	3975.06	52.78	54.02	1.24	3922.09
	10/06/05	3975.06	52.83	53.70	0.87	3922.10
	10/13/05	3975.06	52.86	53.64	0.78	3922.08
	10/20/05	3975.06	52.81	53.50	0.69	3922.15
	10/26/05	3975.06	52.87	53.60	0.73	3922.08
	11/03/05	3975.06	52.77	53.88	1.11	3922.12
	11/10/05	3975.06	52.76	53.83	1.07	3922.14
	11/16/05	3975.06	52.84	53.59	0.75	3922.11
	11/23/05	3975.06	52.90	53.51	0.61	3922.07
	11/28/05	3975.06	52.75	53.80	1.05	3922.15
	12/05/05	3975.06	52.85	53.48	0.63	3922.12
	12/12/05	3975.06	52.84	53.50	0.66	3922.12
	12/16/05	3975.06	53.00	53.41	0.41	3922.00
	12/19/05	3975.06	52.89	53.51	0.62	3922.08
	12/29/05	3975.06	52.73	53.55	0.82	3922.21
MW-10	03/22/05	3975.02	-	53.00	0.00	3922.02
	06/22/05	3975.02	-	52.91	0.00	3922.11
	09/21/05	3975.02	-	52.84	0.00	3922.18
	12/16/05	3975.02	-	52.76	0.00	3922.26
MW-11	03/22/05	3975.30	-	53.75	0.00	3921.55
	06/22/05	3975.30	-	53.64	0.00	3921.66
	09/21/05	3975.30	-	53.56	0.00	3921.74
	12/16/05	3975.30	-	53.60	0.00	3921.70
MW-12	03/22/05	3974.55	-	52.69	0.00	3921.86
	06/22/05	3974.55	-	52.58	0.00	3921.97
	09/21/05	3974.55	-	52.51	0.00	3922.04
	12/16/05	3974.55	-	52.46	0.00	3922.09
MW-13	03/22/05	3975.00	-	53.64	0.00	3921.36
	06/22/05	3975.00	-	53.58	0.00	3921.42

TABLE 1

2005 GROUNDWATER ELEVATION DATA

PLAINS MARKETING, L.P.
TNM 97-04 (TOWNSEND)
LEA COUNTY, NEW MEXICO

WELL NUMBER	DATE MEASURED	TOP OF CASING ELEVATION	DEPTH TO PRODUCT	DEPTH TO WATER	PSH THICKNESS	CORRECTED GROUNDWATER ELEVATION
MW-13	09/21/05	3975.00	-	53.51	0.00	3921.49
	12/16/05	3975.00	-	53.44	0.00	3921.56
MW-14	03/22/05	3976.15	-	54.40	0.00	3921.75
	06/22/05	3976.15	-	54.29	0.00	3921.86
	09/21/05	3976.15	-	54.21	0.00	3921.94
	12/16/05	3976.15	-	54.14	0.00	3922.01
MW-15	03/22/05	3974.69	-	53.19	0.00	3921.50
	06/22/05	3974.69	-	53.14	0.00	3921.55
	09/21/05	3974.69	-	53.05	0.00	3921.64
	12/16/05	3974.69	-	52.99	0.00	3921.70
MW-16	03/22/05	3975.12	-	53.26	0.00	3921.86
	06/22/05	3975.12	-	53.15	0.00	3921.97
	09/21/05	3975.12	-	53.08	0.00	3922.04
	12/16/05	3975.12	-	53.02	0.00	3922.10
MW-17	03/22/05	3975.93	-	54.23	0.00	3921.70
	06/22/05	3975.93	-	54.13	0.00	3921.80
	09/21/05	3975.93	-	54.56	0.00	3921.37
	12/16/05	3975.93	-	54.00	0.00	3921.93
RW-1	01/10/05	3970.79	48.40	51.00	2.60	3922.00
	01/18/05	3970.79	48.55	51.05	2.50	3921.87
	01/18/05	3970.79	48.75	49.35	0.60	3921.95
	01/25/05	3970.79	48.44	50.55	2.11	3922.03
	01/27/05	3970.79	48.52	51.10	2.58	3921.88
	02/01/05	3970.79	48.50	50.25	1.75	3922.03
	02/07/05	3970.79	48.45	50.30	1.85	3922.06
	02/11/05	3970.79	48.47	50.27	1.80	3922.05
	02/15/05	3970.79	48.35	50.34	1.99	3922.14
	02/22/05	3970.79	48.30	50.79	2.49	3922.12
	02/24/05	3970.79	48.27	50.79	2.52	3922.14
	03/03/05	3970.79	48.52	50.85	2.33	3921.92
	03/09/05	3970.79	48.55	50.87	2.32	3921.89
	03/22/05	3970.79	48.25	50.95	2.70	3922.14
	03/24/05	3970.79	48.25	50.95	2.70	3922.14
	03/31/05	3970.79	48.28	50.91	2.63	3922.12
	06/22/05	3970.79	48.28	50.18	1.90	3922.23
	07/21/05	3970.79	48.15	50.82	2.67	3922.24
	08/03/05	3970.79	48.13	50.76	2.63	3922.27
	08/12/05	3970.79	48.13	50.78	2.65	3922.26
	08/15/05	3970.79	48.22	50.24	2.02	3922.27
	08/22/05	3970.79	48.13	50.51	2.38	3922.30
	08/30/05	3970.79	48.14	50.62	2.48	3922.28

TABLE 1
2005 GROUNDWATER ELEVATION DATA
PLAINS MARKETING, L.P.
TNM 97-04 (TOWNSEND)
LEA COUNTY, NEW MEXICO

WELL NUMBER	DATE MEASURED	TOP OF CASING ELEVATION	DEPTH TO PRODUCT	DEPTH TO WATER	PSH THICKNESS	CORRECTED GROUNDWATER ELEVATION
RW-1	09/07/05	3970.79	48.14	50.55	2.41	3922.29
	09/14/05	3970.79	48.20	50.55	2.35	3922.24
	09/20/05	3970.79	48.16	50.40	2.24	3922.29
	09/21/05	3970.79	48.22	50.56	2.34	3922.22
	09/28/05	3970.79	48.12	50.55	2.43	3922.31
	10/06/05	3970.79	48.16	50.51	2.35	3922.28
	10/13/05	3970.79	48.15	50.49	2.34	3922.29
	10/20/05	3970.79	48.19	50.40	2.21	3922.27
	10/26/05	3970.79	48.18	50.35	2.17	3922.28
	11/03/05	3970.79	48.10	50.50	2.40	3922.33
	11/10/05	3970.79	48.11	50.54	2.43	3922.32
	11/16/05	3970.79	48.13	50.40	2.27	3922.32
	11/23/05	3970.79	48.17	50.37	2.20	3922.29
	11/28/05	3970.79	48.08	50.50	2.42	3922.35
	12/05/05	3970.79	48.19	50.30	2.11	3922.28
	12/12/05	3970.79	48.15	50.33	2.18	3922.31
	12/16/05	3970.79	48.84	49.98	1.14	3921.78
	12/19/05	3970.79	48.21	50.35	2.14	3922.26
	12/29/05	3970.79	48.12	50.41	2.29	3922.33

TABLE 2

2005 CONCENTRATIONS OF BTEX IN GROUNDWATER

PLAINS MARKETING, L.P.
TNM 97-04
LEA COUNTY, NEW MEXICO

All Concentrations are reported in mg/L

SAMPLE LOCATION	SAMPLE DATE	EPA SW 846-8021B, 5030				
		BENZENE	TOLUENE	ETHYL-BENZENE	m, p -XYLENES	o -XYLENES
NMOCD REGULATORY LIMIT		0.01	0.75	0.75	0.62	
MW-1	03/22/05	Not Sampled Due to Sample Reduction				
	06/22/05	Not Sampled Due to Sample Reduction				
	09/14/05	Plugged and Abandoned				
MW-2	03/22/05	Not Sampled Due to PSH in Well				
	06/22/05	Not Sampled Due to PSH in Well				
	09/21/05	Not Sampled Due to PSH in Well				
	12/16/05	Not Sampled Due to PSH in Well				
MW-3	03/22/05	Not Sampled Due to PSH in Well				
	06/22/05	Not Sampled Due to PSH in Well				
	09/21/05	Not Sampled Due to PSH in Well				
	12/16/05	Not Sampled Due to PSH in Well				
MW-4	03/22/05	Not Sampled Due to PSH in Well				
	06/22/05	Not Sampled Due to PSH in Well				
	09/21/05	Not Sampled Due to PSH in Well				
	12/16/05	Not Sampled Due to PSH in Well				
MW-5	03/22/05	Not Sampled Due to PSH in Well				
	06/22/05	Not Sampled Due to PSH in Well				
	09/21/05	Not Sampled Due to PSH in Well				
	12/16/05	Not Sampled Due to PSH in Well				
MW-6	03/22/05	Not Sampled Due to PSH in Well				
	06/22/05	Not Sampled Due to PSH in Well				
	09/21/05	Not Sampled Due to PSH in Well				
	12/16/05	Not Sampled Due to PSH in Well				
MW-7	03/22/05	Not Sampled Due to Sample Reduction				
	06/22/05	Not Sampled Due to Sample Reduction				
	09/21/05	Not Sampled Due to Sample Reduction				
	12/16/05	<0.001	<0.001	0.0028	0.0031	
MW-8	03/22/05	Not Sampled Due to Sample Reduction				
	06/22/05	Not Sampled Due to Sample Reduction				
	09/14/05	Plugged and Abandoned				
MW-9	03/22/05	Not Sampled Due to PSH in Well				
	06/22/05	Not Sampled Due to PSH in Well				
	09/21/05	Not Sampled Due to PSH in Well				

TABLE 2

2005 CONCENTRATIONS OF BTEX IN GROUNDWATER

PLAINS MARKETING, L.P.
TNM 97-04
LEA COUNTY, NEW MEXICO

All Concentrations are reported in mg/L

SAMPLE LOCATION	SAMPLE DATE	EPA SW 846-8021B, 5030				
		BENZENE	TOLUENE	ETHYL- BENZENE	m, p - XYLENES	o - XYLENES
NMOC REGULATORY LIMIT		0.01	0.75	0.75	0.62	
MW-9	12/16/05	Not Sampled Due to PSH in Well				
MW-10	03/22/05	Not Sampled Due to Sample Reduction				
	06/22/05	Not Sampled Due to Sample Reduction				
	09/21/05	Not Sampled Due to Sample Reduction				
	12/16/05	<0.001	<0.001	<0.001	<0.001	
MW-11	03/22/05	<0.001	<0.001	<0.001	<0.001	
	06/22/05	<0.001	<0.001	<0.001	<0.001	
	09/21/05	<0.001	<0.001	<0.001	<0.001	
	12/16/05	<0.001	<0.001	<0.001	<0.001	
MW-12	03/22/05	Not Sampled Due to Sample Reduction				
	06/22/05	Not Sampled Due to Sample Reduction				
	09/21/05	Not Sampled Due to Sample Reduction				
	12/16/05	<0.001	<0.001	<0.001	<0.001	
MW-13	03/22/05	<0.001	<0.001	<0.001	<0.001	
	06/22/05	<0.001	<0.001	<0.001	0.005	
	09/21/05	<0.001	<0.001	<0.001	0.003	
	12/16/05	<0.001	<0.001	<0.001	0.0074	
MW-14	03/22/05	0.274	0.017	0.049	0.313	
	06/22/05	0.543	0.283	0.379	1.130	
	09/21/05	0.413	0.159	0.318	0.996	
	12/16/05	0.361	0.279	0.291	0.956	
MW-15	03/22/05	2.380	0.057	0.163	0.140	
	06/22/05	7.790	0.125	0.427	0.528	
	09/21/05	4.470	<0.1	0.241	0.303	
	12/16/05	5.650	0.103	0.273	0.275	
MW-16	03/22/05	<0.001	<0.001	<0.001	<0.001	
	06/22/05	<0.001	<0.001	<0.001	<0.001	
	09/21/05	<0.005	<0.005	<0.005	<0.005	
	12/16/05	<0.005	<0.005	<0.005	<0.005	
MW-17	03/22/05	<0.001	<0.001	<0.001	<0.001	
	06/22/05	<0.001	<0.001	<0.001	<0.001	
	09/21/05	<0.001	<0.001	<0.001	<0.001	
	12/16/05	<0.001	<0.001	<0.001	<0.001	

TABLE 2

2005 CONCENTRATIONS OF BTEX IN GROUNDWATER

PLAINS MARKETING, L.P.
TNM 97-04
LEA COUNTY, NEW MEXICO

All Concentrations are reported in mg/L

SAMPLE LOCATION	SAMPLE DATE	EPA SW 846-8021B, 5030				
		BENZENE	TOLUENE	ETHYL- BENZENE	m, p - XYLENES	o - XYLENES
NMOCD REGULATORY LIMIT		0.01	0.75	0.75	0.62	
RW-1	03/22/05	Not Sampled Due to PSH in Well				
	06/22/05	Not Sampled Due to PSH in Well				
	09/21/05	Not Sampled Due to PSH in Well				
	12/16/05	Not Sampled Due to PSH in Well				

Appendices

Appendix A:
Notification of Release and Corrective
Action (Form C-141)

Box 1830
Jebbs, NM 88241-1980
District II - (505) 748-1283
11 South First
Jebbs, NM 88210
District III - (505) 334-6178
100 Rio Grande Road
Jebbs, NM 87410
District IV - (505) 827-7191

Energy, Minerals and Natural Resources Department
Oil Conservation Division
2040 South Pacheco Street
Santa Fe, New Mexico 87505
(505) 827-7131

Form C-141
Originated 2/13/97

Submit 2 copies to
Appropriate District
Office in accordance
with Rule 116 on
back side of form

TAM-97-04

Release Notification and Corrective Action

OPERATOR

☐ Initial Report ☒ Final Report

Name Texas-New Mexico Pipe Line Company	Contact Edwin H. Gripp
Address Box 60028, San Angelo, TX 76906	Telephone No. (915) 947-9000
Facility Name 4" gathering line	Facility Type pipeline
Surface Owner Larry Megert	Mineral Owner
Lease No.	

LOCATION OF RELEASE								
Unit Letter	Section	Township	Range	Feet from the	North/South Line	Feet from the	East/West Line	County
	11	16S	35E					Lea

NATURE OF RELEASE

Type of Release Sweet Crude	Volume of Release (revised) 488 barrels	Volume Recovered 5 barrels
Source of Release gathering line	Date and Hour of Occurrence Unknown	Date and Hour of Discovery 4/16/97 4:00 p.m.
Immediate Notice Given? <input checked="" type="checkbox"/> Yes <input type="checkbox"/> No <input type="checkbox"/> Not Required	If YES, To Whom? Wayne Price	
Whom? Billy D. Chapman	Date and Hour 4/25/97 9:00 a.m.	
Was a Watercourse Reached? <input type="checkbox"/> Yes <input checked="" type="checkbox"/> No	If YES, Volume Impacting the Watercourse.	

Watercourse was impacted. Describe Fully:

Describe Cause of Problem and Remedial Action Taken:

External Corrosion. Leak successfully clamped off.

Describe Area Affected and Cleanup Action Taken:

Approximately 1500 sq.ft. pasture land. Will remediate on site.

Describe General Conditions Prevailing (Temperature, Precipitation, etc.):

degrees; clear

I hereby certify that the information given above is true and complete to the best of my knowledge and belief. Signature: <i>Edwin H. Gripp</i>		OIL CONSERVATION DIVISION	
Print Name: Edwin H. Gripp		Approved by District Supervisor:	
Title: District Manager		Approval Date:	Expiration Date:
Date: August 12, 1997 Phone: 915-947-9001		Conditions of Approval:	Noted <input type="checkbox"/>

Attach Additional Sheets If Necessary

State Corp. Commission
Pipe Line Division

Hazardous Waste Section
NM Environmental Improvement Div.

TAM-97-04

BDC JAS