

1R - 263

REPORTS

DATE:

2/16/1999



Tipperary
CORPORATION

633 Seventeenth Street
Suite 1550
Denver, Colorado 80202



FEB 22 1999

February 16, 1999

CERTIFIED MAIL

Mr. William C. Olson
New Mexico Oil Conservation Division
2040 South Pacheco
Santa Fe, NM 87505

**RE: January 1999 Progress Report
Tatum Pit Closure Project
Lea County, NM**

Dear Mr. Olson:

Please find enclosed additional results from our monitor wells in the subject project area. These results are from water samples taken on January 8, 1999. These samples represent the sixth quarter of monitoring. The total BTEX concentrations continue to decline. We will continue to analyze water samples quarterly from the subject project.

Because the following wells have had at least four consecutive quarters of acceptable BTEX concentrations, we formally request final closure for these projects: Vera (pit and monitor well #5), State NBN (pit and monitor well #7), Iva Com (monitor wells #1 & #2), Mable Com (monitor well #3). Please advise if this request is acceptable.

In response to your January 15, 1999 correspondence, please be advised that we are scheduling the installation of additional monitor wells in accordance with the conditions set forth in your letter. Additionally, we respectfully request an extension until May 1, 1999 to submit our next progress report rather than the April 1 deadline specified in your letter. This will allow us to stay on our current quarterly monitoring schedule. Please advise if this is not acceptable.

If you have any questions, please call me at (303) 293-9379.

Very truly yours,

Larry G. Sugano
Vice President - Engineering

cc: NMOCD Hobbs Office

Enclosures



Tipperary
CORPORATION

TATUM PIT CLOSURE PROJECT
WATER SAMPLING RESULTS
JANUARY, 1999



Executive Summary

Iva COM

Monitor Wells # 1, 2

No sample from either Iva COM well has ever revealed a BTEX component concentration in excess of standards. Tipperary may request closure of monitor wells nos. 1 and 2. The source well is still producing free product on occasion and has not been tested for BTEX.

Mable COM

Monitor Wells # 3, 4

Monitor well # 3 has recorded four consecutive quarters of acceptable BTEX concentrations. Tipperary may request closure of this well. Well # 4 has shown two consecutive quarters of acceptable BTEX concentrations. The source well has not been tested for BTEX.

Vera

Monitor Well # 5

Monitor well # 5 has shown six consecutive quarters of acceptable concentrations. Tipperary may request closure of the pit and monitor well.

Bell

Monitor Wells # 6, 13, 14

Monitor well # 13 has gone two quarters with acceptable concentrations. Wells # 6 & 14 continue to show benzene concentrations in excess of standards. Such concentrations are consistently trending lower. A delineation well is required for this site.

NBN

Monitor Well # 7

Monitor well # 7 has shown four consecutive quarters of acceptable concentrations. Tipperary may request closure of the pit and monitor well.

NBF

Monitor Wells # 8, 15, 16

All well BTEX concentrations exceed standards. A delineation well is required for this site.



Sohio State # 1

Monitor Wells # 10

Though trending steadily downward, all well sample concentrations exceed standard. A delineation well is required for this site.

Sohio State "A"

Monitor Well # 11, 19, 20

The benzene concentrations in all three wells are trending sharply downward. At the present rate of decline, wells 19 & 20 will become delineation wells through natural attenuation within six months.

GS State # 1

Monitor Wells # 12, 21, 22

Monitor well # 12 continues to contain free product. BTEX concentrations in wells 21 & 22 are trending downward though not as sharply as similar sites. Well # 12 should be evaluated for potential as a source well. A delineation well is required for this site.

Satellite # 4

Monitor Wells # 9, 23, 24

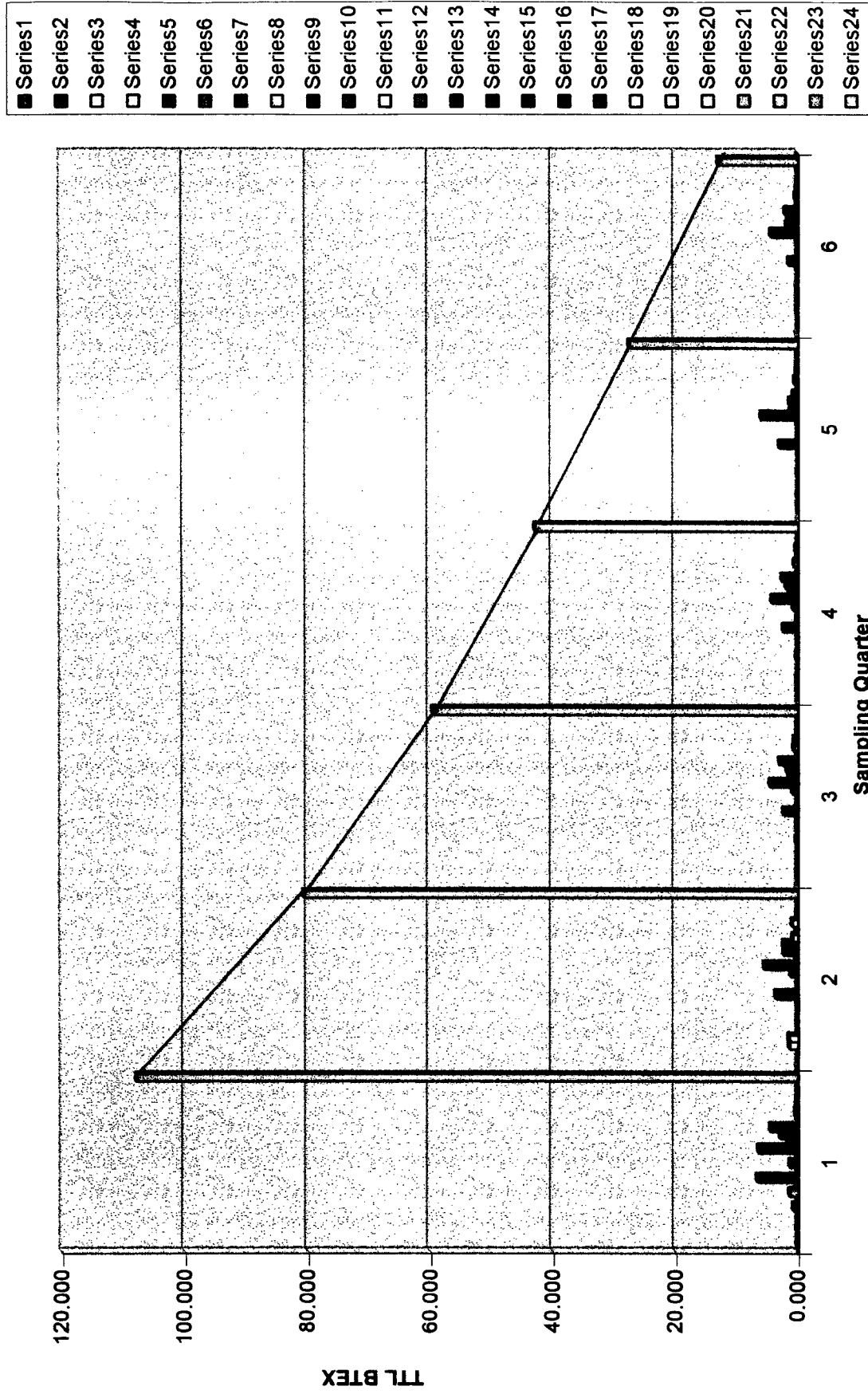
Well # 24 has shown four quarters of acceptable concentrations. The reported benzene concentrations from Well # 23 have been quite erratic but appear to be generally trending downward. Well # 23 presently shows acceptable concentrations. Well # 9 is steadily trending lower in benzene and should fall within acceptable limits within the next few sampling rounds.



**Tipperary Corporation
Tatum Pit Closure Project
Quarterly Sampling Comparison**

Well #	9/5/97	12/3/97	3/23/98	6/25/98	10/1/98	1/6/99
1	0.012	0.025	0.022	0.030	0.023	0.011
2	0.005	0.013	0.011	0.010	0.010	0.010
3	0.200	1.387	0.054	0.071	0.093	0.073
4	0.031	1.501	0.047	0.049	0.013	0.019
5	0.019	0.025	0.011	0.037	0.015	0.011
6	0.790	0.068	0.281	0.249	0.141	0.137
7	0.005	0.023	0.017	0.048	0.023	0.008
8	1.377	0.023	0.146	0.058	0.018	0.036
9	0.285	0.123	0.007	0.081	0.050	0.049
10	6.626	3.626	2.292	2.423	3.096	1.532
11	0.122	0.124	0.184	0.141	0.108	0.105
13	1.346	0.010	0.037	0.056	0.017	0.007
14	0.005	1.183	0.918	0.764	0.184	0.161
15	6.432	5.499	4.588	4.189	6.086	4.380
16	1.662	0.256	1.419	1.446	1.287	1.845
17	2.908	2.305	1.863	1.920	1.419	1.665
18	4.498	2.361	3.013	2.601	0.786	2.072
19	0.011	0.875	0.184	0.079	0.082	0.094
20	0.454	0.345	0.658	0.604	0.539	0.390
21	0.287	0.953	0.554	0.198	0.238	0.259
22	0.152	0.200	0.195	0.344	0.144	0.134
23	0.009	0.122	0.106	0.008	0.078	0.014
24	0.009	0.064	0.007	0.017	0.007	0.011
	107.873	80.628	59.517	42.903	27.480	13.023

Tipperary Quarterly Sampling Comparison



ENVIRONMENTAL LAB OF , INC.

"Don't Treat Your Soil Like Dirt!"

TIPPERARY
ATTN: MR. VICTOR A. VICE
P.O. BOX 857
TATUM, NM 88267
FAX: 505-398-8510
FAX: 281-648-8968

Receiving Date: 01/08/99
Sample Type: Water
Project: None Given
Project Location: Tatum, New Mexico 88237

Analysis Date: 01/08/99
Sampling Date: 01/06 & 01/07/99
Sample Condition: Intact/iced/HCl

ELT#	FIELD CODE	BENZENE (mg/l)	TOLUENE (mg/l)	ETHYLBENZENE (mg/l)	m,p-XYLENE (mg/l)	o-XYLENE (mg/l)
16587	Sohio St. #1 - #17	0.876	0.136	0.094	0.339	0.163
16588	Sohio St. #1 - #18	1.10	0.247	0.107	0.415	0.203
16589	Sohio Sta. M/W #19	0.040	0.014	0.008	0.021	0.013
16590	Sohio Sta. M/W #20	0.341	0.010	0.005	0.028	0.008
16591	GS State M/W #21	0.133	0.010	0.054	0.056	0.006
16592	GS State M/W #22	0.039	0.010	0.020	0.048	0.017
16593	Sat. #4 M/W #23	0.004	0.003	0.001	0.004	0.002
16594	Sat. #4 M/W #24	0.004	0.003	<0.001	0.002	<0.001
16595	Na Com. M/W #1	0.003	0.001	<0.001	0.002	0.004
16596	Na Com. M/W #2	0.004	0.001	<0.001	0.003	0.001
16597	Mable Com. M/W #3	<0.001	0.002	0.012	0.042	0.016
16598	Mable Com. M/W #4	0.007	0.002	0.002	0.006	0.002
16599	Vera M/W #5	0.002	0.002	0.001	0.004	0.002
16600	Bell A M/W #6	0.127	0.001	0.003	0.005	0.001
16601	NBN M/W #7	0.003	<0.001	<0.001	0.002	<0.001
16602	NBF M/W #9	0.028	0.001	0.003	0.003	<0.001
16603	Sat. 4 M/W #9	0.034	0.003	0.008	0.005	0.001
16604	Sohio St. #1 M/W #10	1.00	0.067	0.156	0.214	0.095
16605	Sohio Sta. M/W #11	0.061	0.011	0.006	0.018	0.012
16606	Bell A M/W #13	0.001	<0.001	<0.001	0.003	0.001
16607	Bell A M/W #14	0.154	<0.001	0.002	0.003	0.001
16608	NBF M/W #15	1.63	1.49	0.182	0.728	0.350
16609	NBF M/W #16	1.47	0.122	0.047	0.144	0.082
% IA		86	85	87	85	87
% EA		90	90	89	88	90
BLANK		<0.001	<0.001	<0.001	<0.001	<0.001

METHODS: SW 846-8020.5030


Roland K Tuttle

1-11-99
Date

CHAIN-OF-CUSTODY RECORD AND ANALYSIS REQUEST

Phone #: 1-800-834-4358

FAX# 505-398-6509

Tatom, N. Mex #88267

Project Name :

Project Location:

Sampler Signatures:

D.A. Davis

[illegible]

01-08.99

550

01-08.99

550

formulas to

1

Environmental Lab of Texas, Inc. 12600 West I-20 East Odessa, Texas 79763
(915) 563-1800 FAX (915) 563-1713

V.A. Vice - Whole Earth

Project Manager: "505"-398-6509 Off

TIPPERY OIL & GAS

Company Name & Address

Tipton, New Mexico 88267

Project #:

Project Name:

Project Location:

Sample Signatures

Debra A. One

LAB # (LAB USE ONLY)	FIELD CODE	# CONTAINERS	Volume/Amount	MATRIX						PRESERVATIVE METHOD				SAMPLING	
				WATER	SOIL	AIR	SLUDGE	OTHER	HCL	HNO3	ICE	NONE	OTHER	DATE	TIME
16587	Solo STA #17-18	2	1											1/1/99	
16588	Solo STA #19-20	2	1											1/1/99	
16589	GS STATE #21-22	2	1											1/1/99	
16590	SATellite #4 #1023-24	2	1											1/1/99	
16591															
16592															
16593															
16594															

CHAIN-OF-CUSTODY RECORD AND ANALYSIS REQUEST

ANALYSIS REQUEST														
TCLP Metals Ag As Be Cd Cr Pb Hg Se														
Total Metals Ag As Be Cd Cr Pb Hg Se														
TCLP Volatiles														
TCLP Semi Volatiles														
TDS														
RCI														

BTEX 8020/5030

TPH 418.1

REMARKS

Relinquished by:	Date:	Time:	Received by:
<i>[Signature]</i>	01-08-99	0855	<i>[Signature]</i>
Relinquished by:	Date:	Time:	Received by:
Relinquished by:	Date:	Time:	Received by Laboratory:

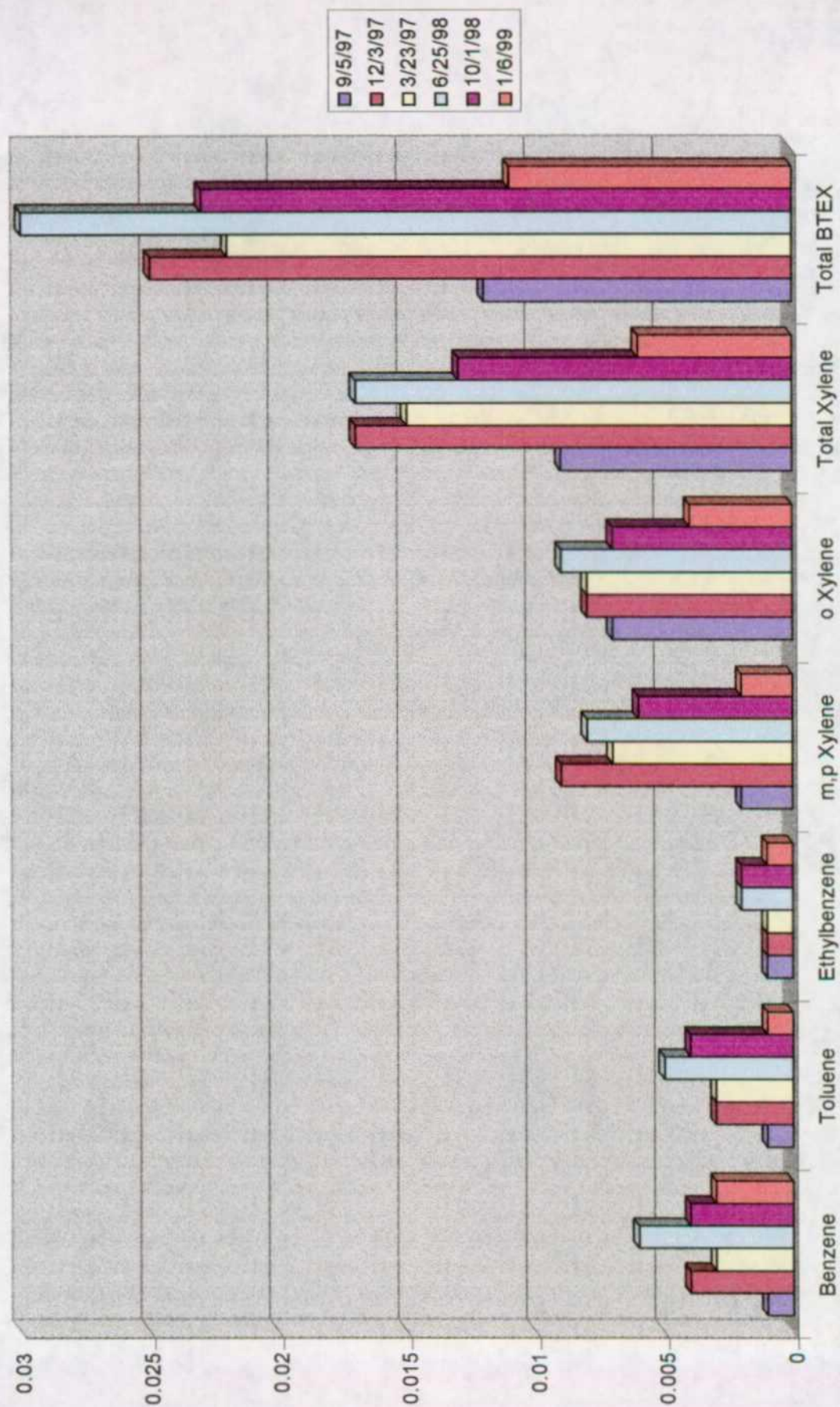
Monitor Well # 1

Iva COM

Sampling Results

Lab. #	12475	13182	14057	14657	15590	16595
Sample Date	9/5/97	12/3/97	3/23/98	6/25/98	10/1/98	1/6/99
Benzene	0.001	0.004	0.003	0.006	0.004	0.003
Toluene	0.001	0.003	0.003	0.005	0.004	0.001
Ethylbenzene	0.001	0.001	0.001	0.002	0.002	0.001
m,p Xylene	0.002	0.009	0.007	0.008	0.006	0.002
o Xylene	0.007	0.008	0.008	0.009	0.007	0.004
Total Xylene	0.009	0.017	0.015	0.017	0.013	0.006
Total BTEX	0.012	0.025	0.022	0.03	0.023	0.011

Monitor Well # 1



Monitor Well # 2

Iva COM

Sampling Results

Lab. #	12476	13183	14058	15605	16596
Sample Date	9/5/97	12/3/97	3/23/98	10/1/98	1/6/99
Benzene	0.001	0.002	0.002	0.003	0.004
Toluene	0.001	0.002	0.001	0.002	0.001
Ethylbenzene	0.001	0.001	0.001	0.001	0.001
m,p Xylene	0.001	0.006	0.005	0.003	0.003
o Xylene	0.001	0.002	0.002	0.001	0.001
Total Xylene	0.001	0.008	0.007	0.004	0.004
Total BTEX	0.005	0.013	0.011	0.01	0.01

Monitor Well # 2

