

1R - 264

REPORTS

DATE:

9/10/1998

RECEIVED

SEP 10 1998

ENVIRONMENTAL BUREAU
OIL CONSERVATION DIVISION

**Remediation Results
One Year Review
Mable COM**

Remediation Summary

The site was excavated to an approximate depth of 35' bgl. and a series of two monitor wells were installed down gradient from the pit center. A product recovery windmill was erected at the pit center and the fluids were collected in a covered tank immediately adjacent to the location. All recovered fluids are disposed of within the Burro Pipeline disposal system.

Present Status

The recovery well continues to remove free product from the aquifer at the approximate rate of .25 bbls. per week – down from approximately two bbls. per week at the beginning of the recovery process. The monitoring wells presently show a benzene concentration in one monitoring well at a concentration above the WQCC acceptance standards. However we believe that the rate of decline in concentration will be such that the present monitoring wells will adequately define the lateral extent of contaminant migration within one or two more monitoring cycles.

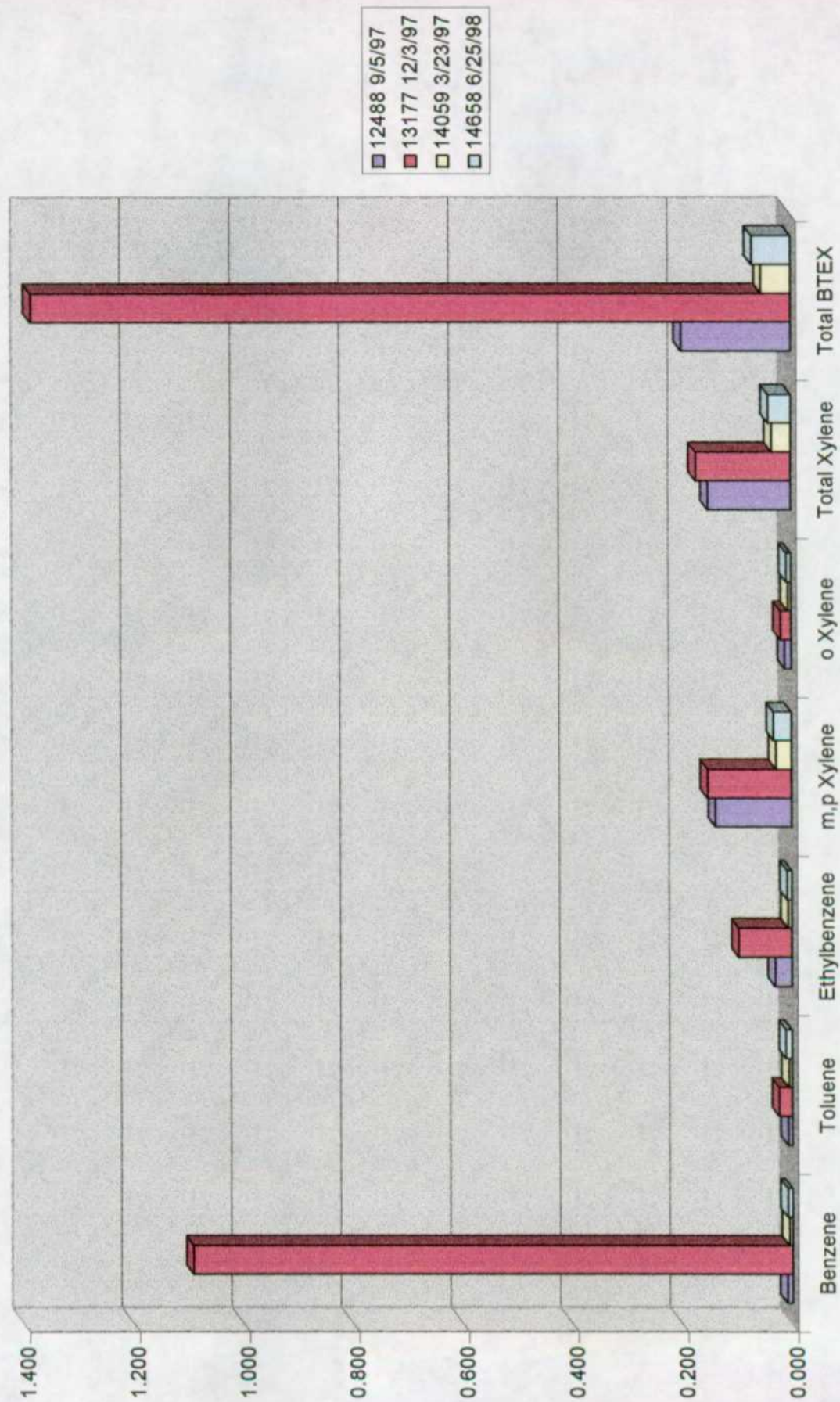
Future Remediation Activities

We will continue to sample both monitor wells until each show four consecutive quarters of contaminant concentrations below WQCC standards. We then propose to sample the monitor wells on an annual basis and begin sampling the recovery well on a quarterly basis.

Monitor Well # 3
Mable COM
Sampling Results

Lab. #	12488	13177	14059	14658
Sample Date	9/5/97	12/3/97	3/23/97	6/25/98
Benzene	0.010	1.093	0.006	0.009
Toluene	0.008	0.024	0.006	0.011
Ethylbenzene	0.031	0.097	0.007	0.009
m,p Xylene	0.139	0.153	0.029	0.033
o Xylene	0.012	0.02	0.006	0.009
Total Xylene	0.151	0.173	0.035	0.042
Total BTEX	0.200	1.387	0.054	0.071

Monitor Well # 3



Monitor Well # 4
Mable COM
Sampling Results

Lab. #	12489	13178	14060	14659
Sample Date	9/5/97	12/3/97	3/23/98	6/25/98
Benzene	0.015	1.465	0.019	0.020
Toluene	0.002	0.007	0.004	0.006
Ethylbenzene	0.002	0.017	0.002	0.003
m,p Xylene	0.010	0.01	0.019	0.015
o Xylene	0.002	0.002	0.003	0.005
Total Xylene	0.012	0.012	0.022	0.02
Total BTEX	0.031	1.501	0.047	0.049

Monitor Well # 4

