

1R - 266

REPORTS

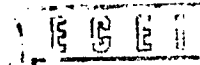
DATE:

2/16/1999



Tipperary
CORPORATION

633 Seventeenth Street
Suite 1550
Denver, Colorado 80202



FEB 22 1999

February 16, 1999

CERTIFIED MAIL

Mr. William C. Olson
New Mexico Oil Conservation Division
2040 South Pacheco
Santa Fe, NM 87505

**RE: January 1999 Progress Report
Tatum Pit Closure Project
Lea County, NM**

Dear Mr. Olson:

Please find enclosed additional results from our monitor wells in the subject project area. These results are from water samples taken on January 8, 1999. These samples represent the sixth quarter of monitoring. The total BTEX concentrations continue to decline. We will continue to analyze water samples quarterly from the subject project.

Because the following wells have had at least four consecutive quarters of acceptable BTEX concentrations, we formally request final closure for these projects: Vera (pit and monitor well #5), State NBN (pit and monitor well #7), Iva Com (monitor wells #1 & #2), Mable Com (monitor well #3). Please advise if this request is acceptable.

In response to your January 15, 1999 correspondence, please be advised that we are scheduling the installation of additional monitor wells in accordance with the conditions set forth in your letter. Additionally, we respectfully request an extension until May 1, 1999 to submit our next progress report rather than the April 1 deadline specified in your letter. This will allow us to stay on our current quarterly monitoring schedule. Please advise if this is not acceptable.

If you have any questions, please call me at (303) 293-9379.

Very truly yours,

Larry G. Sugano
Vice President - Engineering

cc: NMOCD Hobbs Office

Enclosures



Tipperary
CORPORATION

TATUM PIT CLOSURE PROJECT
WATER SAMPLING RESULTS
JANUARY, 1999



Executive Summary

Iva COM

Monitor Wells # 1, 2

No sample from either Iva COM well has ever revealed a BTEX component concentration in excess of standards. Tipperary may request closure of monitor wells nos. 1 and 2. The source well is still producing free product on occasion and has not been tested for BTEX.

Mable COM

Monitor Wells # 3, 4

Monitor well # 3 has recorded four consecutive quarters of acceptable BTEX concentrations. Tipperary may request closure of this well. Well # 4 has shown two consecutive quarters of acceptable BTEX concentrations. The source well has not been tested for BTEX.

Vera

Monitor Well # 5

Monitor well # 5 has shown six consecutive quarters of acceptable concentrations. Tipperary may request closure of the pit and monitor well.

Bell

Monitor Wells # 6, 13, 14

Monitor well # 13 has gone two quarters with acceptable concentrations. Wells # 6 & 14 continue to show benzene concentrations in excess of standards. Such concentrations are consistently trending lower. A delineation well is required for this site.

NBN

Monitor Well # 7

Monitor well # 7 has shown four consecutive quarters of acceptable concentrations. Tipperary may request closure of the pit and monitor well.

NBF

Monitor Wells # 8, 15, 16

All well BTEX concentrations exceed standards. A delineation well is required for this site.



Sohio State # 1

Monitor Wells # 10

Though trending steadily downward, all well sample concentrations exceed standard. A delineation well is required for this site.

Sohio State "A"

Monitor Well # 11, 19, 20

The benzene concentrations in all three wells are trending sharply downward. At the present rate of decline, wells 19 & 20 will become delineation wells through natural attenuation within six months.

GS State # 1

Monitor Wells # 12, 21, 22

Monitor well # 12 continues to contain free product. BTEX concentrations in wells 21 & 22 are trending downward though not as sharply as similar sites. Well # 12 should be evaluated for potential as a source well. A delineation well is required for this site.

Satellite # 4

Monitor Wells # 9, 23, 24

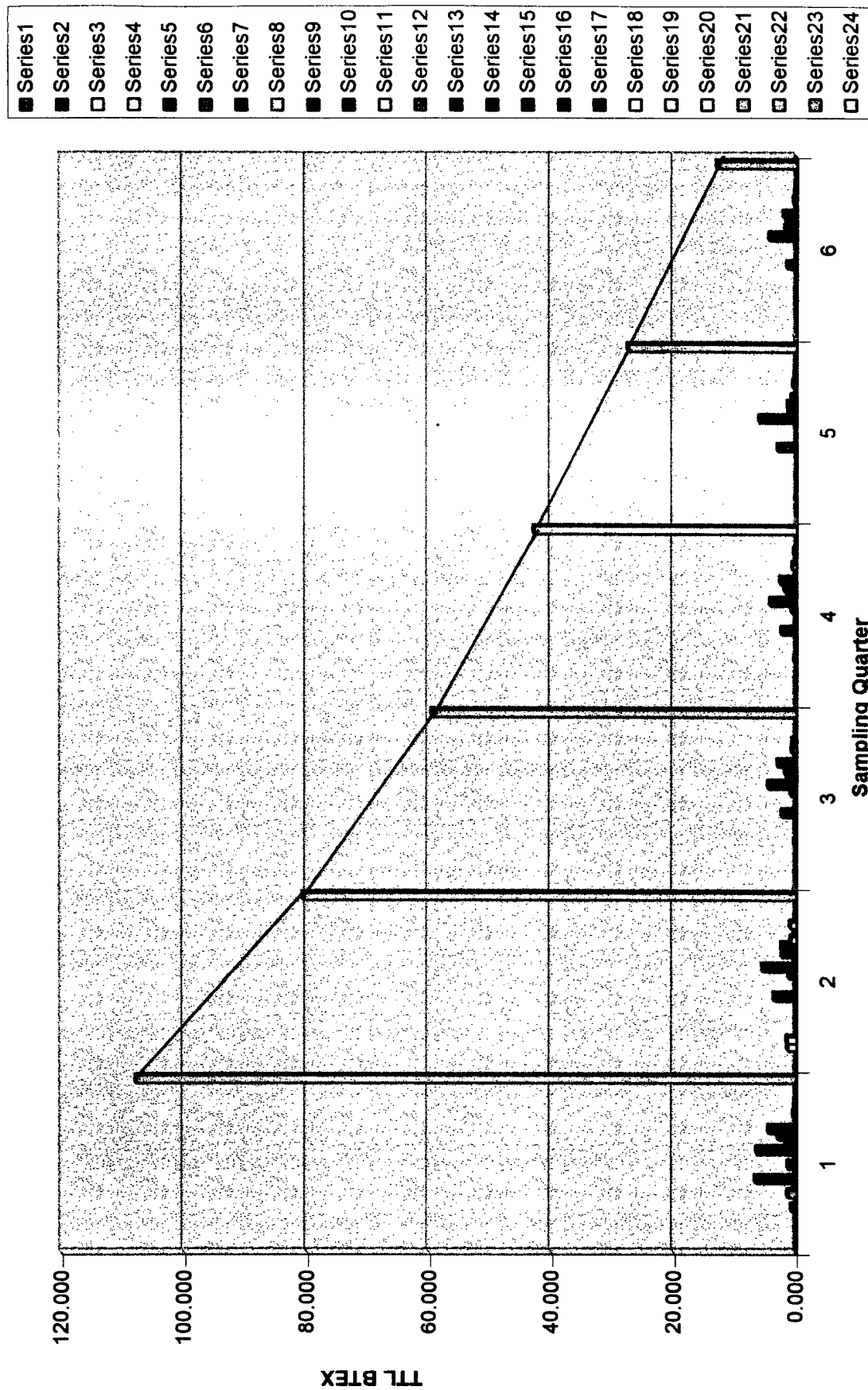
Well # 24 has shown four quarters of acceptable concentrations. The reported benzene concentrations from Well # 23 have been quite erratic but appear to be generally trending downward. Well # 23 presently shows acceptable concentrations. Well # 9 is steadily trending lower in benzene and should fall within acceptable limits within the next few sampling rounds.



**Tipperary Corporation
Tatum Pit Closure Project
Quarterly Sampling Comparison**

Well #	9/5/97	12/3/97	3/23/98	6/25/98	10/1/98	1/6/99
1	0.012	0.025	0.022	0.030	0.023	0.011
2	0.005	0.013	0.011	0.010	0.010	0.010
3	0.200	1.387	0.054	0.071	0.093	0.073
4	0.031	1.501	0.047	0.049	0.013	0.019
5	0.019	0.025	0.011	0.037	0.015	0.011
6	0.790	0.068	0.281	0.249	0.141	0.137
7	0.005	0.023	0.017	0.048	0.023	0.008
8	1.377	0.023	0.146	0.058	0.018	0.036
9	0.285	0.123	0.007	0.081	0.050	0.049
10	6.626	3.626	2.292	2.423	3.096	1.532
11	0.122	0.124	0.184	0.141	0.108	0.105
13	1.346	0.010	0.037	0.056	0.017	0.007
14	0.005	1.183	0.918	0.764	0.184	0.161
15	6.432	5.499	4.588	4.189	6.086	4.380
16	1.662	0.256	1.419	1.446	1.287	1.845
17	2.908	2.305	1.863	1.920	1.419	1.665
18	4.498	2.361	3.013	2.601	0.786	2.072
19	0.011	0.875	0.184	0.079	0.082	0.094
20	0.454	0.345	0.658	0.604	0.539	0.390
21	0.287	0.953	0.554	0.198	0.238	0.259
22	0.152	0.200	0.195	0.344	0.144	0.134
23	0.009	0.122	0.106	0.008	0.078	0.014
24	0.009	0.064	0.007	0.017	0.007	0.011
	107.873	80.628	59.517	42.903	27.480	13.023

Tipperary Quarterly Sampling Comparison



ENVIRONMENTAL LAB OF , INC.

"Don't Treat Your Soil Like Dirt!"

TIPPERARY
ATTN: MR. VICTOR A. VICE
P.O. BOX 857
TATUM, NM 88287
FAX: 505-398-8510
FAX: 281-646-8996

Receiving Date: 01/08/99
Sample Type: Water
Project: None Given
Project Location: Tatum, New Mexico 88237

Analysis Date: 01/08/99
Sampling Date: 01/06 & 01/07/99
Sample Condition: Intact/iced/HCl

ELT#	FIELD CODE	BENZENE (mg/l)	TOLUENE (mg/l)	ETHYLBENZENE (mg/l)	m,p-XYLENE (mg/l)	o-XYLENE (mg/l)
16587	Sohio St. #1 - #17	0.876	0.138	0.094	0.339	0.163
16588	Sohio St. #1 - #18	1.10	0.247	0.107	0.415	0.203
16589	Sohio Sta. M/W #19	0.040	0.014	0.006	0.021	0.013
16590	Sohio Sta. M/W #20	0.341	0.010	0.005	0.026	0.008
16591	GS State M/W #21	0.133	0.010	0.054	0.056	0.006
16592	GS State M/W #22	0.039	0.010	0.020	0.048	0.017
16593	Sat. #4 M/W #23	0.004	0.003	0.001	0.004	0.002
16594	Sat. #4 M/W #24	0.004	0.003	<0.001	0.002	<0.001
16595	Ira Com. M/W #1	0.003	0.001	<0.001	0.002	0.004
16596	Ira Com. M/W #2	0.004	0.001	<0.001	0.003	0.001
16597	Mable Com. M/W #3	<0.001	0.002	0.012	0.042	0.016
16598	Mable Com. M/W #4	0.007	0.002	0.002	0.006	0.002
16599	Vera M/W #5	0.002	0.002	0.001	0.004	0.002
16600	Bell A M/W #6	0.127	0.001	0.003	0.005	0.001
16601	NBN M/W #7	0.003	<0.001	<0.001	0.002	<0.001
16602	NBF M/W #8	0.028	0.001	0.003	0.003	<0.001
16603	Sat. 4 M/W #9	0.034	0.003	0.008	0.005	0.001
16604	Sohio St. #1 M/W #10	1.00	0.067	0.156	0.214	0.095
16605	Sohio Sta. M/W #11	0.061	0.011	0.006	0.018	0.012
16606	Bell A M/W #13	0.001	<0.001	<0.001	0.003	0.001
16607	Bell A M/W #14	0.154	<0.001	0.002	0.003	0.001
16608	NBF M/W #15	1.63	1.49	0.182	0.728	0.350
16609	NBF M/W #16	1.47	0.122	0.047	0.144	0.062
% IA		86	85	87	85	87
% EA		90	90	89	88	90
BLANK		<0.001	<0.001	<0.001	<0.001	<0.001

METHODS: SW 846-8020.5030


Roland K. Tuttle

1-11-99
Date

Environmental Lab of Texas, Inc. 12600 West I-20 East Odessa, Texas 79763
 (915) 563-1800 FAX (915) 563-1713

Project Manager: V.A. VICE 7. Whole Earth
 Phone #: 1-800-884-4358
 FAX #: 505-398-6509

Company Name & Address: TITANACY OIL & GAS

Project #: TATON, N.MEX #88267
 Project Name: M/W

Project Location: TATON, N.MEX
 Sampler Signature: D.A. D...

LAB # (LAB USE ONLY)		FIELD CODE	# CONTAINERS	Volume/Amount	MATRIX						PRESERVATIVE METHOD				SAMPLING	
					WATER	SOIL	AIR	SLUDGE	OTHER	HCL	HNO3	ICE	NONE	OTHER	DATE	TIME
16595		IYA Com. M/W #1 #3	2											1/6/99		
16596		MABLE Com. #3 #4	2											1/6/99		
16597		VERA # M/W #5	2											1/6/99		
16598		Bella M/W #6	2											1/6/99		
16599		NBN M/W #7	2											1/6/99		
16600		NBF M/W #8	2											1/6/99		
16601		SATILITE #1 - M/W #9	2											1/6/99		
16602		SOLIO STA #1 - M/W #10	2											1/6/99		
16603		SOLIO STA #2 - M/W #11	2											1/6/99		
16604		Bella M/W #13 #14	2											1/6/99		
16605		NBF M/W #15-16	1											1/6/99		

Requisitioned by: [Signature] Date: 01-08-99 Times: 0855
 Received by: [Signature] Times: []
 Requisitioned by: [Signature] Date: [] Times: []
 Received by: [Signature] Times: []
 Requisitioned by: [Signature] Date: [] Times: []
 Received by: [Signature] Times: []

CHAIN-OF-CUSTODY RECORD AND ANALYSIS REQUEST

ANALYSIS REQUEST

TPH 418.1	TCLP Metals Ag As Ba Cd Cr Pb Hg Se	TCLP Metals Ag As Ba Cd Cr Pb Hg Se	TCLP Volatiles	TCLP Semi Volatiles	TDS	RCI
BTEX 8020/5030						

REMARKS

Received by: [Signature]

Received by:

Received by Laboratory:

Environmental Lab of Texas, Inc. 12600 West 1-20 East Odessa, Texas 79763
 (915) 563-1800 FAX (915) 563-1713

V.A. Vice - Whole Earth
 Project Manager: "605"-398-6509 Off
 Tupperary Oil & Gas
 Phone #: 1-800-854-4358
 FAX #:

Company Name & Address:
 Tatum, New Mexico 88967

Project #:
 Project Name:

Project Location:
 Sampler Signature: *Debra A. Vice*

LAB # (LAB USE ONLY)	FIELD CODE	# CONTAINERS	Volume/Amount	MATRIX				PRESERVATIVE METHOD				DATE	TIME
				WATER	SOIL	AIR	SLUDGE	OTHER	HCL	HNO3	ICE	NONE	OTHER
10587	Solo STA #17-18	2										1/1/99	
10588	Solo STA #19-20	2										1/1/99	
10589	GS STATE #10-21-22	2										1/1/99	
10590	Solo STA #10-23-24	2										1/1/99	

Relinquished by:	Date:	Threat:	Received by:	REMARKS
<i>[Signature]</i>	01-08-99	0855	<i>[Signature]</i>	
Relinquished by:	Date:	Threat:	Received by:	
Relinquished by:	Date:	Threat:	Received by Laboratory:	

CHAIN-OF-CUSTODY RECORD AND ANALYSIS REQUEST

ANALYSIS REQUEST

TCLP Metals Ag As Ba Cd Cr Pb Hg Se	
Total Metals Ag As Ba Cd Cr Pb Hg Se	
TCLP Volatiles	
TCLP Semi Volatiles	
TDS	
RCI	
TPH 418.1	
BTEX 8020/5030	

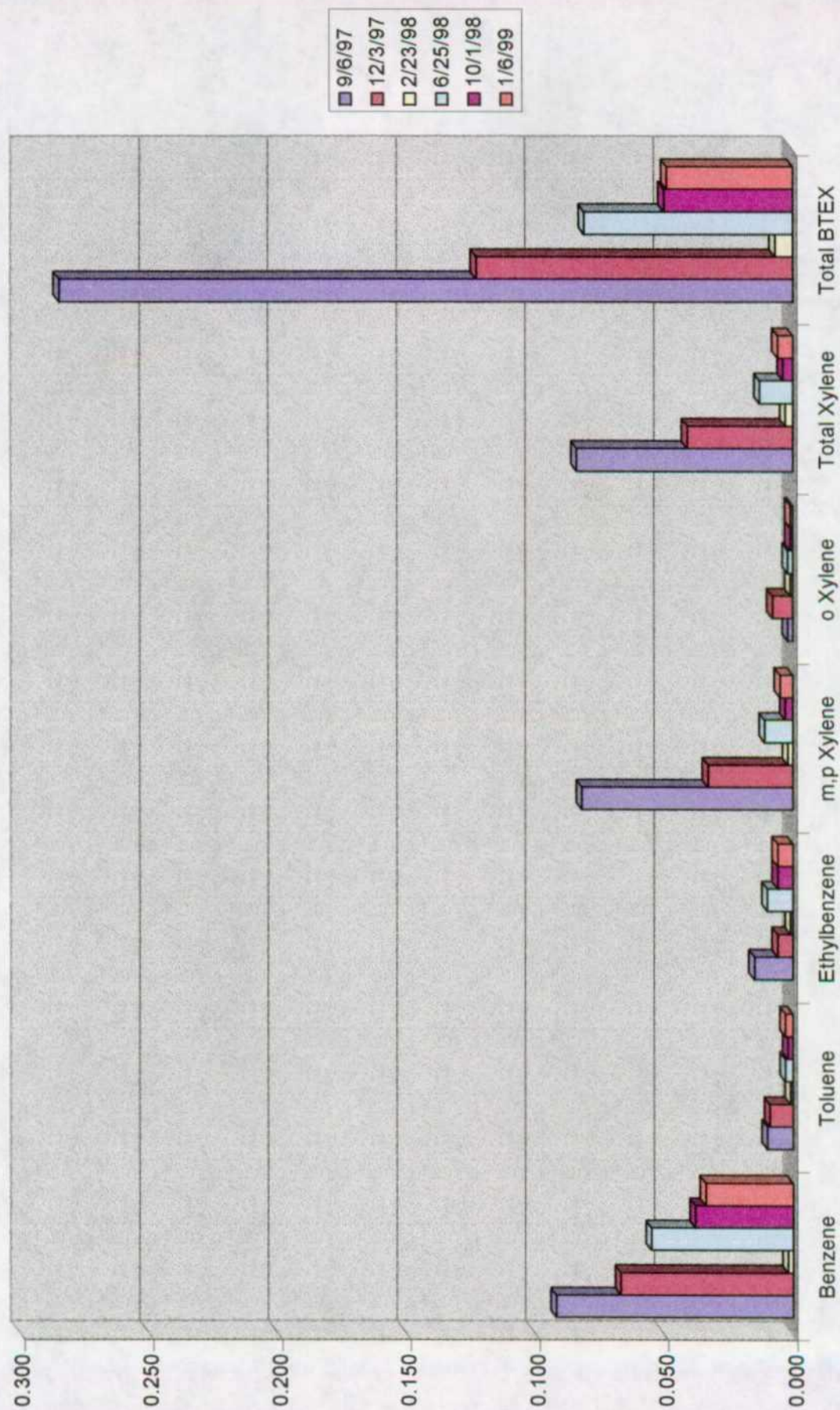
Monitor Well # 9

Satellite # 4

Sampling Results

Lab. #	12485	13191	14065	14664	15596	16603
Sample Date	9/6/97	12/3/97	2/23/98	6/25/98	10/1/98	1/6/99
Benzene	0.092	0.067	0.002	0.055	0.038	0.034
Toluene	0.010	0.009	0.001	0.003	0.002	0.003
Ethylbenzene	0.015	0.006	0.001	0.010	0.006	0.006
m,p Xylene	0.082	0.033	0.002	0.011	0.003	0.005
o Xylene	0.002	0.008	0.001	0.002	0.001	0.001
Total Xylene	0.084	0.041	0.003	0.013	0.004	0.006
Total BTEX	0.285	0.123	0.007	0.081	0.050	0.049

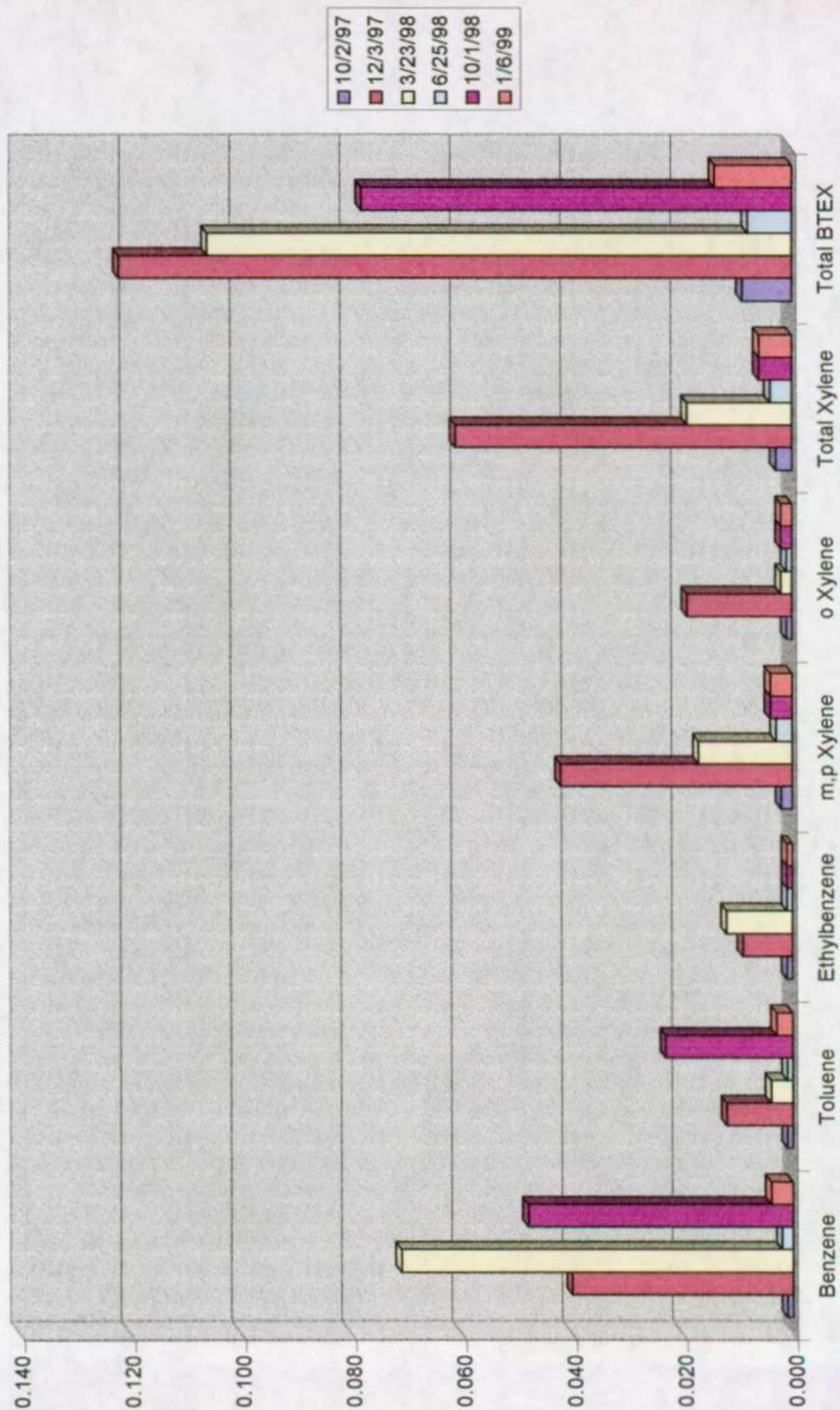
Monitor Well # 9



Monitor Well # 23
Satellite # 4
Sampling Results

Lab. #	12727	13192	14045	14677	15603	16593
Sample Date	10/2/97	12/3/97	3/23/98	6/25/98	10/1/98	1/6/99
Benzene	0.001	0.040	0.071	0.002	0.048	0.004
Toluene	0.001	0.012	0.004	0.001	0.023	0.003
Ethylbenzene	0.001	0.009	0.012	0.001	0.001	0.001
m,p Xylene	0.002	0.042	0.017	0.003	0.004	0.004
o Xylene	0.001	0.019	0.002	0.001	0.002	0.002
Total Xylene	0.003	0.061	0.019	0.004	0.006	0.006
Total BTEX	0.009	0.122	0.106	0.008	0.078	0.014

Monitor Well # 23



Monitor Well # 24

Satellite # 4

Sampling Results

Lab. #	12728	13193	14046	14678	15612	16594
Sample Date	10/2/97	12/3/97	3/23/98	6/25/98	10/1/98	1/6/99
Benzene	0.001	0.017	0.001	0.003	0.002	0.004
Toluene	0.001	0.006	0.001	0.003	0.001	0.003
Ethylbenzene	0.001	0.005	0.001	0.002	0.001	0.001
m,p Xylene	0.002	0.025	0.003	0.006	0.002	0.002
o Xylene	0.001	0.011	0.001	0.003	0.001	0.001
Total Xylene	0.003	0.036	0.004	0.009	0.003	0.003
Total BTEX	0.009	0.064	0.007	0.017	0.007	0.011

Monitor Well # 24

