

1R - 266

REPORTS

DATE:

9/10/1998

RECEIVED

SEP 10 1998

ENVIRONMENTAL BUREAU
OIL CONSERVATION DIVISION

**Remediation Results
One Year Review
Satellite # 4**

Remediation Summary

The site was excavated to an approximate depth of 35' bgl., lined and three monitor wells installed down gradient from the pit center.

Present Status

The monitor well nearest the pit center has shown a reduction in BTEX concentrations of approximately 75% in the first year. The two outer wells revealed the passage of a BTEX "slug" during the second and third sampling events but both now show concentrations below WQCC standards.

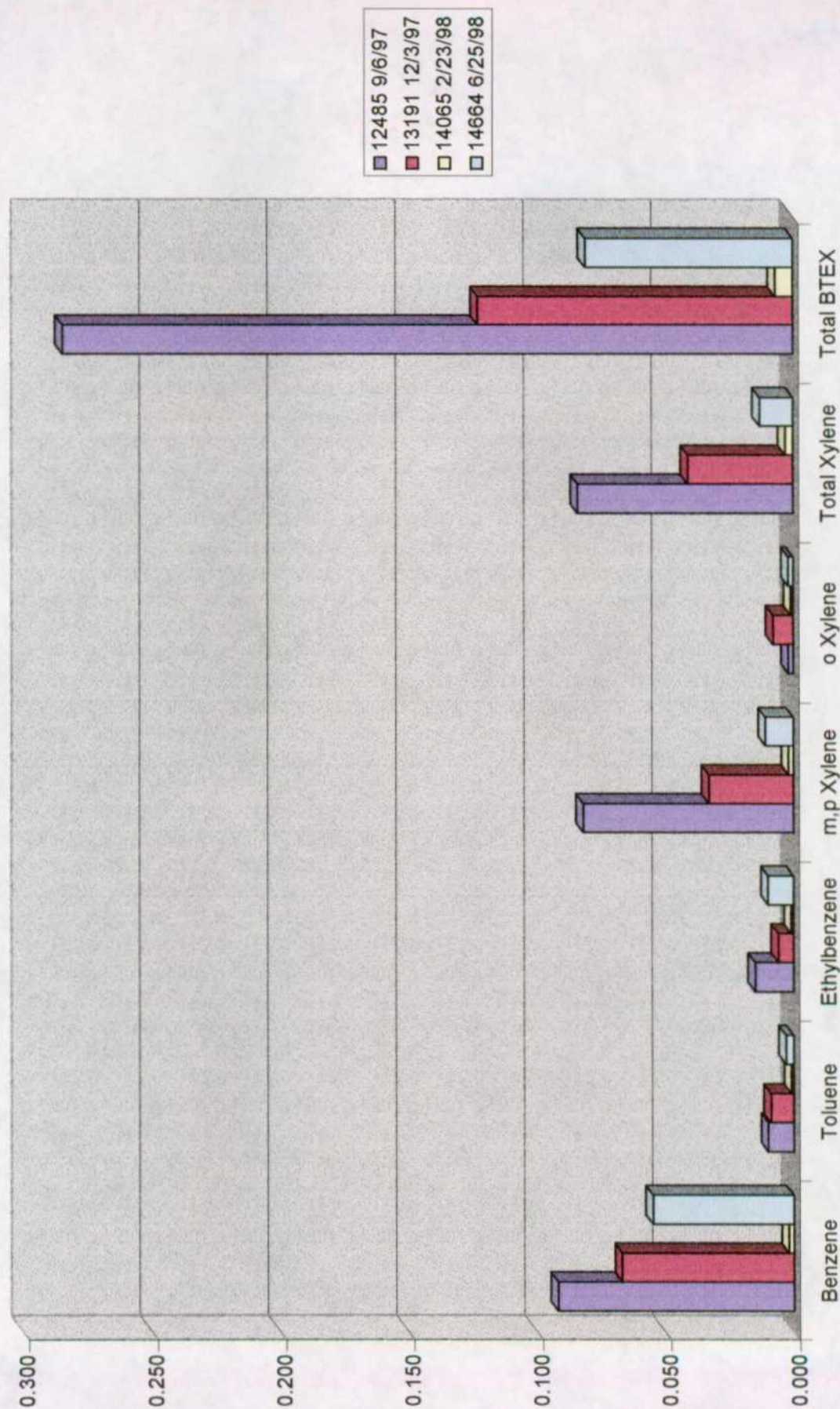
Future Remediation Activities

We will continue to monitor all three wells until each shows four consecutive quarters with concentrations below WQCC standards.

Monitor Well # 9
Satellite # 4
Sampling Results

Lab. #	12485	13191	14065	14664
Sample Date	9/6/97	12/3/97	2/23/98	6/25/98
Benzene	0.092	0.067	0.002	0.055
Toluene	0.010	0.009	0.001	0.003
Ethylbenzene	0.015	0.006	0.001	0.010
m,p Xylene	0.082	0.033	0.002	0.011
o Xylene	0.002	0.008	0.001	0.002
Total Xylene	0.084	0.041	0.003	0.013
Total BTEX	0.285	0.123	0.007	0.081

Monitor Well # 9



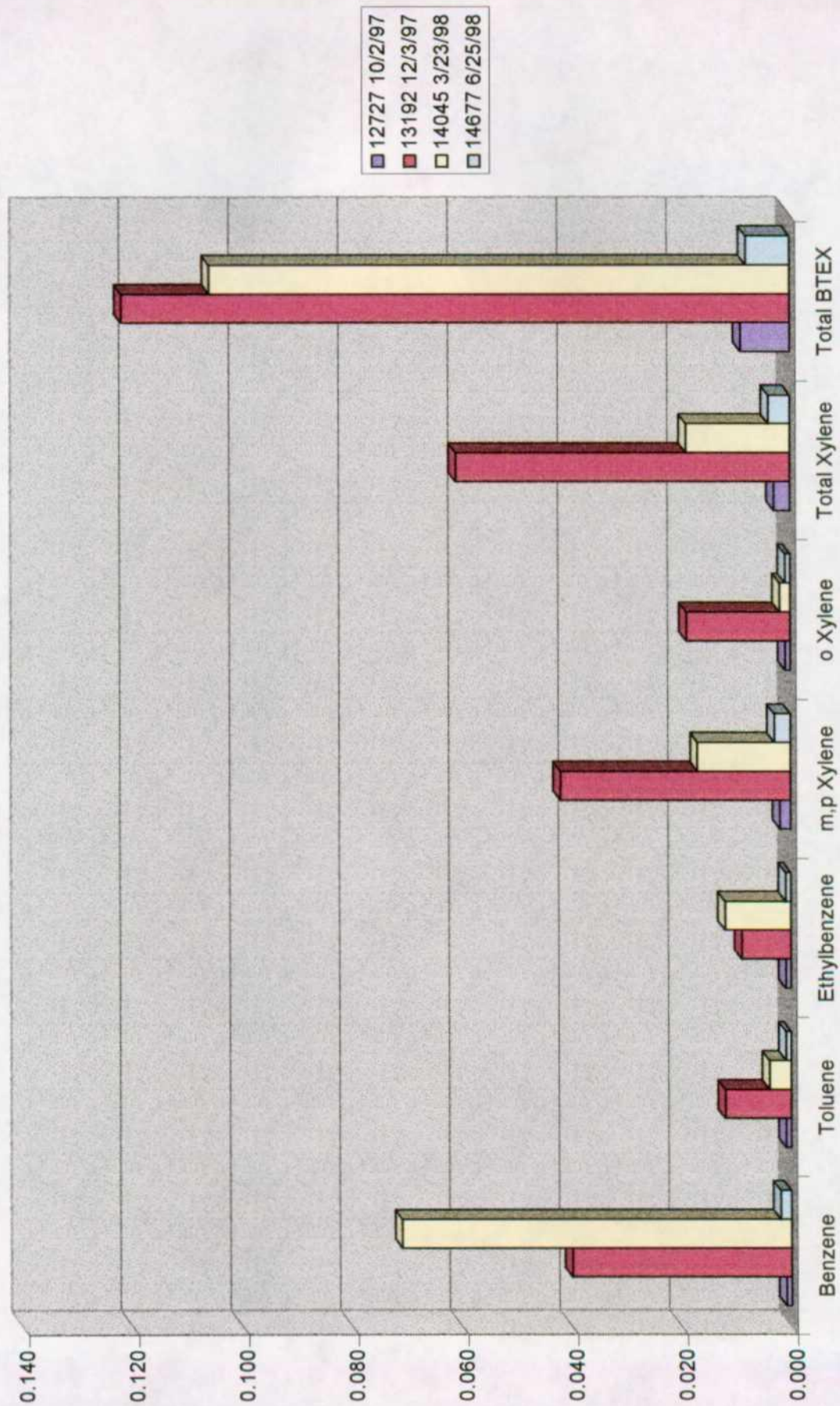
Monitor Well # 23

Satellite # 4

Sampling Results

Lab. #	12727	13192	14045	14677
Sample Date	10/2/97	12/3/97	3/23/98	6/25/98
Benzene	0.001	0.040	0.071	0.002
Toluene	0.001	0.012	0.004	0.001
Ethylbenzene	0.001	0.009	0.012	0.001
m,p Xylene	0.002	0.042	0.017	0.003
o Xylene	0.001	0.019	0.002	0.001
Total Xylene	0.003	0.061	0.019	0.004
Total BTEX	0.009	0.122	0.106	0.008

Monitor Well # 23



Monitor Well # 24
Satellite # 4
Sampling Results

Lab. #	12728	13193	14046	14678
Sample Date	10/2/97	12/3/97	3/23/98	6/25/98
Benzene	0.001	0.017	0.001	0.003
Toluene	0.001	0.006	0.001	0.003
Ethylbenzene	0.001	0.005	0.001	0.002
m,p Xylene	0.002	0.025	0.003	0.006
o Xylene	0.001	0.011	0.001	0.003
Total Xylene	0.003	0.036	0.004	0.009
Total BTEX	0.009	0.064	0.007	0.017

Monitor Well # 24

