

1R -

268

REPORTS

DATE:

1998



Tipperary
CORPORATION

633 Seventeenth Street
Suite 1550
Denver, Colorado 80202

November 20, 1998

CERTIFIED MAIL

Mr. William C. Olson
New Mexico Oil Conservation Division
2040 South Pacheco
Santa Fe, NM 87505

RECEIVED

NOV 30 1998

ENVIRONMENTAL BUREAU
OIL CONSERVATION DIVISION

**RE: Tatum Pit Closure Project
Fifth Quarterly Progress Report
Sample Date of October 1, 1998
Lea County, NM**

Dear Mr. Olson:

Please find enclosed additional results from our monitor wells in the subject project area. These results are from water samples taken on October 1, 1998. These samples represent the fifth quarter of monitoring. The total BTEX concentrations continue to decline. The Vera and Iva Com monitor wells now have at least four consecutive quarters of acceptable concentrations. We will continue to analyze water samples quarterly from the other monitor wells.

If you have any questions, please call me at (303) 293-9379.

Very truly yours,

Larry G. Sugano
Vice President - Engineering

cc: NMOCD Hobbs District Office

Enclosures



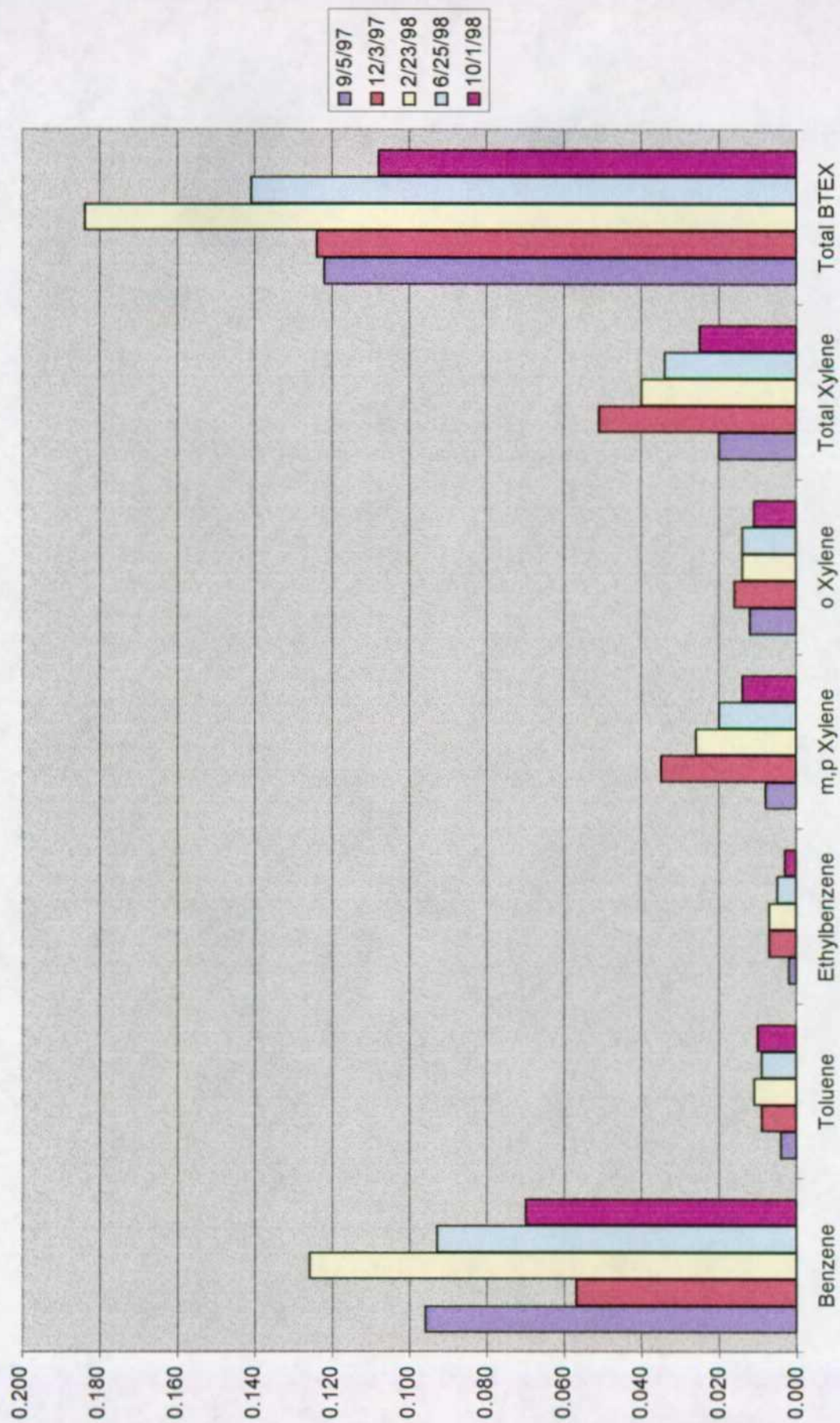
Tipperary
CORPORATION

TATUM PIT CLOSURE PROJECT
LEA COUNTY, NM
FIFTH QUARTERLY PROGRESS REPORT
SAMPLE DATE OF 10/1/98

Monitor Well # 11
Sohio State "A"
Sampling Results

Lab #	12484	13132	14067	14666	15598
Sample Date	9/5/97	12/3/97	2/23/98	6/25/98	10/1/98
Benzene	0.096	0.057	0.126	0.093	0.070
Toluene	0.004	0.009	0.011	0.009	0.010
Ethylbenzene	0.002	0.007	0.007	0.005	0.003
m,p Xylene	0.008	0.035	0.026	0.02	0.014
o Xylene	0.012	0.016	0.014	0.014	0.011
Total Xylene	0.020	0.051	0.04	0.034	0.025
Total BTEX	0.122	0.124	0.184	0.141	0.108

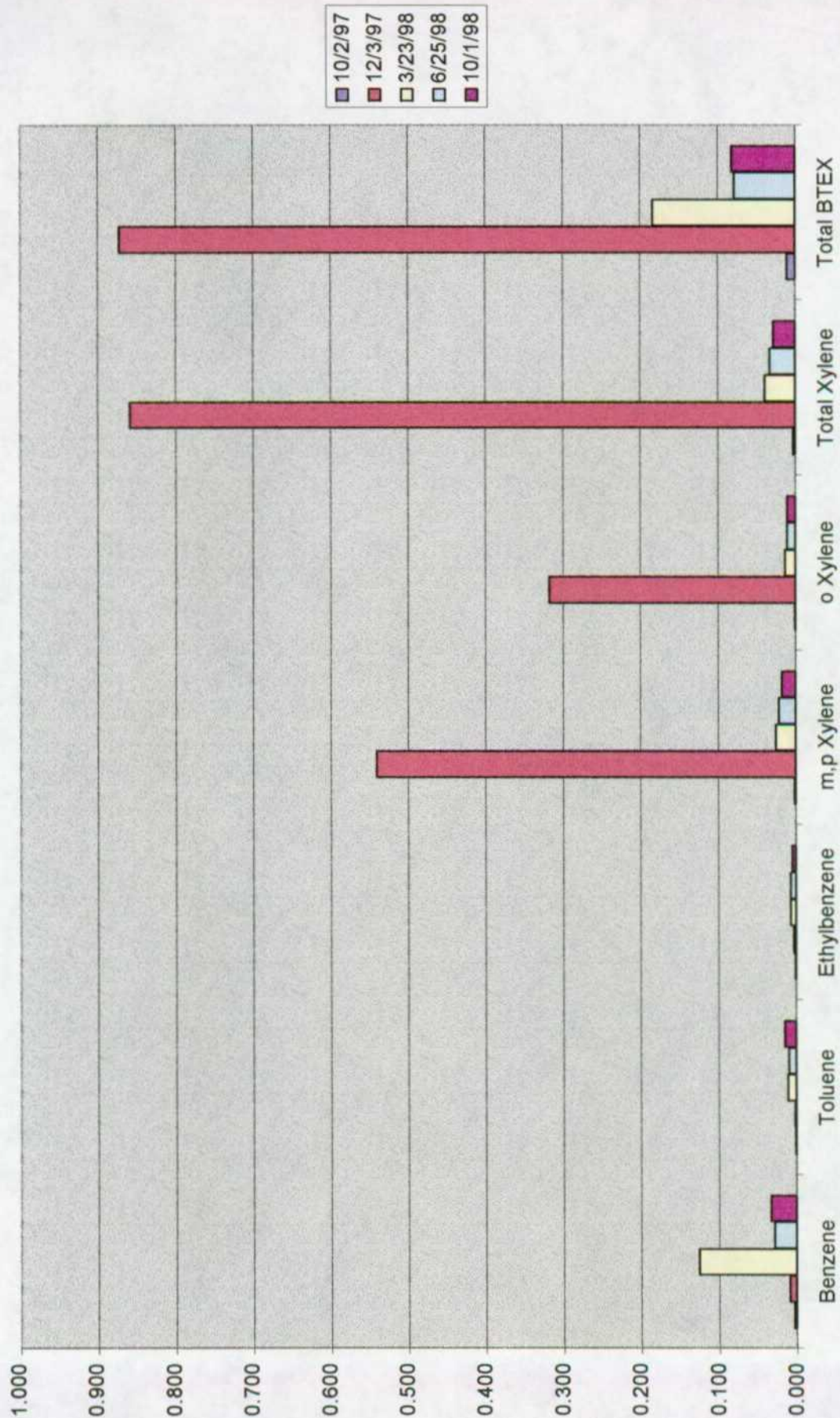
Monitor Well # 11



Monitor Well # 19
 Sohio State "A"
 Sampling Results

Lab. #	12725	13189	14067	14673	15602
Sample Date	10/2/97	12/3/97	3/23/98	6/25/98	10/1/98
Benzene	0.003	0.009	0.126	0.029	0.033
Toluene	0.001	0.002	0.011	0.010	0.015
Ethylbenzene	0.001	0.003	0.007	0.007	0.005
m,p Xylene	0.002	0.541	0.026	0.022	0.018
o Xylene	0.001	0.318	0.014	0.011	0.011
Total Xylene	0.003	0.859	0.04	0.033	0.029
Total BTEX	0.011	0.873	0.184	0.079	0.082

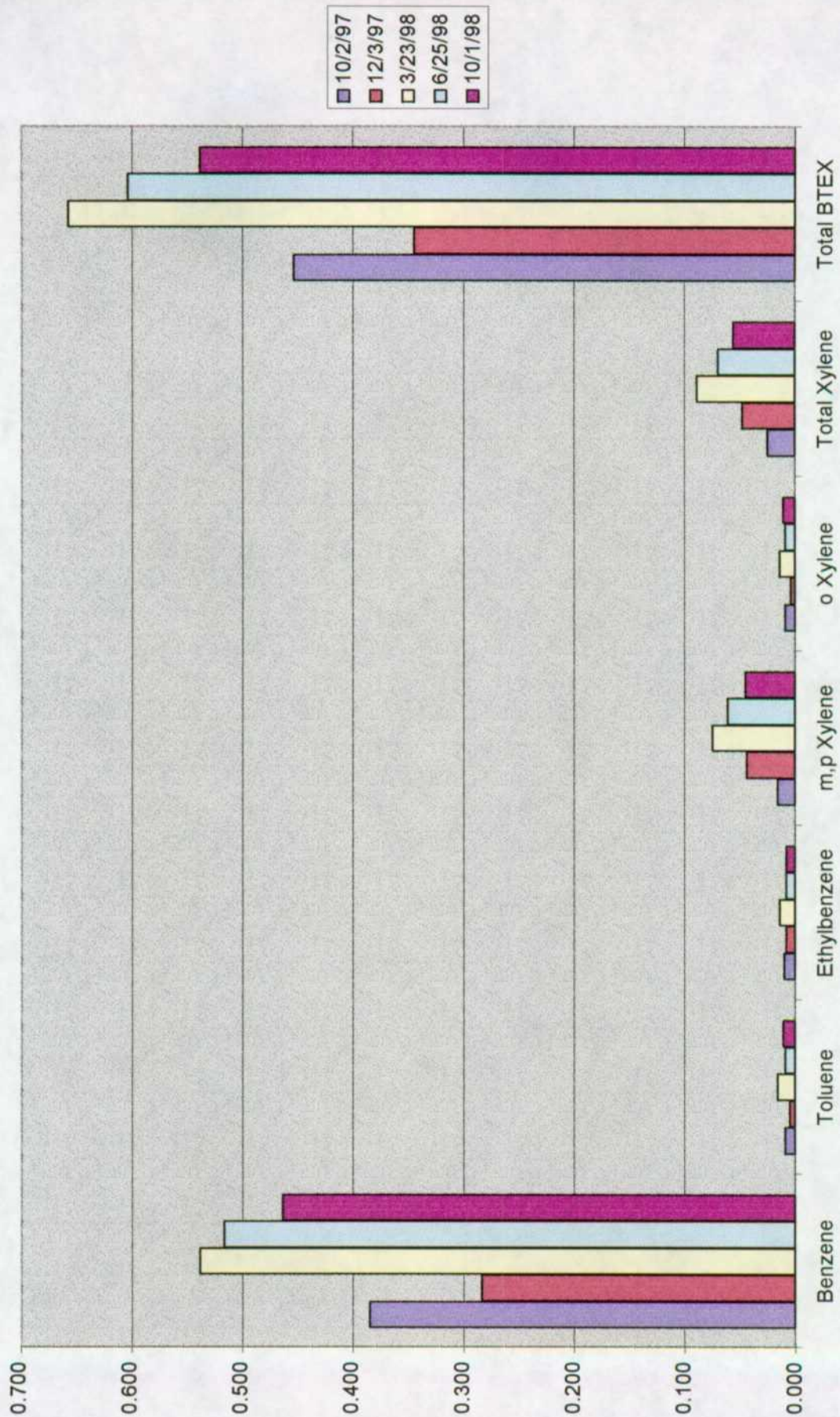
Monitor Well # 19



Monitor Well # 20
Sohio State "A"
Sampling Results

Lab. #	12726	13190	14054	14674	15610
Sample Date	10/2/97	12/3/97	3/23/98	6/25/98	10/1/98
Benzene	0.385	0.284	0.539	0.517	0.464
Toluene	0.009	0.005	0.016	0.009	0.011
Ethylbenzene	0.010	0.008	0.014	0.008	0.008
m,p Xylene	0.016	0.044	0.075	0.061	0.045
o Xylene	0.009	0.004	0.014	0.009	0.011
Total Xylene	0.025	0.048	0.089	0.07	0.056
Total BTEX	0.454	0.345	0.658	0.604	0.539

Monitor Well # 20



ENVIRONMENTAL LAB OF , INC.

"Don't Treat Your Soil Like Dirt!"

TIPPERARY
ATTN: MR. VICTOR A. VICE
P.O. BOX 857
TATUM, NM 88267
FAX: 505-398-6510
FAX: 281-646-8996

Receiving Date: 09/30/98
Sample Type: Water
Project: None Given
Project Location: Tatum, New Mexico

Analysis Date: 9/30 & 10/01/98
Sampling Date: 09/29/98
Sample Condition: Intact/Iced

ELT#	FIELD CODE	BENZENE (mg/l)	TOLUENE (mg/l)	ETHYLBENZENE (mg/l)	m,p-XYLENE (mg/l)	o-XYLENE (mg/l)
15590	Iva Com M/W #1	0.004	0.004	0.002	0.006	0.007
15591	Mable Com M/W #3	0.010	0.015	0.010	0.041	0.017
15592	Vera M/W #5	0.003	0.003	0.001	0.004	0.004
15593	Bell A M/W #6	0.130	0.002	0.003	0.004	0.002
15594	NBN M/W #7	0.006	0.007	0.001	0.006	0.003
15595	NBF M/W #8	0.005	0.004	0.001	0.004	0.004
15596	Satellite #4 M/W #9	0.036	0.002	0.006	0.003	0.001
15597	Sohio St. #1 M/W #10	2.541	0.106	0.182	0.167	0.098
15598	Sohio St. "A" M/W #11	0.070	0.010	0.003	0.014	0.011
15599	Bell A M/W #13	0.003	0.002	0.002	0.004	0.002
15600	NBF M/W #15	3.027	1.630	0.225	0.811	0.393
15601	Sohio St. #1 M/W #17	0.872	0.105	0.071	0.242	0.129
15602	Sohio St. "A" M/W #19	0.033	0.015	0.005	0.018	0.011
15603	G.S. State M/W #21	0.128	0.005	0.069	0.030	0.006
15604	Satellite #4 M/W #23	0.048	0.023	0.001	0.004	0.002
15605	Iva Com M/W #2	0.003	0.002	<0.001	0.003	0.001
15606	Mable Com M/W #4	0.007	0.002	<0.001	0.002	0.001
15607	Bell A M/W #14	0.175	0.002	0.001	0.002	0.001
15608	NBF M/W #16	1.046	0.065	0.037	0.100	0.039
15609	Sohio St. #1 M/W #18	0.542	0.072	0.025	0.093	0.054
15610	Sohio St. "A" M/W #20	0.464	0.011	0.008	0.045	0.011
15611	G.S. State M/W #22	0.049	0.011	0.026	0.040	0.018
15612	Satellite #4 M/W #24	0.002	0.001	<0.001	0.002	<0.001
% IA		100	94	91	90	95
% EA		98	97	93	91	93
BLANK		<0.001	<0.001	<0.001	<0.001	<0.001

METHODS: SW 846-8020,5030


Ralander K. Tuttle

10-5-98
Date

CHAIN-OF-CUSTODY RECORD AND ANALYSIS REQUEST

FAX#: 505-398-6510

1-800-854-4358

"WILLOW & ARTS" "MIKE" -

Project Name:

Signature:

TATUM, New Mexico

Sampler Signature:

BTX 8020/5030
TPH 418.1
TCLP Metals Ag As E
TCLP Metals Ag As E
TCLP Volatiles
TCLP Semi Volatiles
TDS
RCI

Received by:

550

Received by:

Received by Laboratory:

REMARKS

Environmental Lab of Texas, Inc. 12600 West I-20 East Odessa, Texas 79763 (915) 563-1800 FAX (915) 563-1713

CHAIN-OF-CUSTODY RECORD AND ANALYSIS REQUEST

Project Manager: **Vic Vice**
 Phone #: 505-398-6507
 FAX #: 505-398-6510

Company Name & Address: **TIPPERARY OIL & GAS**
 " 1-800-854-4358
 White Earth, "Mike"

Project #:
 Project Name:
 Sampler Signature: **Tatum, New Mexico**

LAB # (LAB USE ONLY)	FIELD CODE	# CONTAINERS	Volume/Amount	MATRIX				PRESERVATIVE METHOD				SAMPLING			
				WATER	SOIL	AIR	SLUDGE	OTHER	HCL	HNO3	ICE	NONE	OTHER	DATE	TIME
15601	Sohio ST #1 M/W #17 #18	1	1											9-28-98	
15602	Sohio ST "A" M/W #19 #20	1	1												
15603	G.S. STATE M/W #21 - #22	1	1												
15604	SATellite #4 - M/W #23 #24	1	1												
15605	Iva com M/W #2	1	1												
15606	MARLE com M/W #4	1	1												
15607	Bell A M/W #14	1	1												
15608	NBF M/W #16	1	1												
15609	Sohio ST #1 M/W #18	1	1												
15610	Sohio ST "A" M/W #20	1	1												
15611	G.S. STATE M/W #22	1	1												
15612	SATellite #4 M/W #24	1	1												

Relinquished by: **[Signature]** Date: **09-30-98** Times: **0855** Received by: **[Signature]**

Relinquished by: **[Signature]** Date: **09-30-98** Times: **0855** Received by: **[Signature]**

Relinquished by: **[Signature]** Date: **09-30-98** Times: **0855** Received by: **[Signature]**

ANALYSIS REQUEST

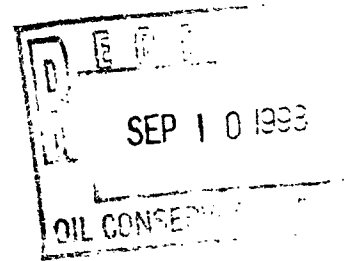
TPH 418.1
 BTEX 8020/5030
 TCLP Metals Ag As Ba Cd Cr Pb Hg Se
 Total Metals Ag As Ba Cd Cr Pb Hg Se
 TCLP Volatiles
 TCLP Semi Volatiles
 TDS
 RCI

REMARKS



Tipperary
CORPORATION

633 Seventeenth Street
Suite 1550
Denver, Colorado 80202



September 8, 1998

CERTIFIED MAIL

Mr. William C. Olson
New Mexico Oil Conservation Division
2040 South Pacheco
Santa Fe, NM 87505

**RE: Work Plan & 6/98 Progress Report
Tatum Pit Closure Project
Lea County, NM**

Dear Mr. Olson:

In response to your June 29, 1998 correspondence, please find enclosed the following:

1. A delineation work plan as requested for the pits requiring additional lateral data.
2. Additional results from the closure of ten pits in the project area. These results are from water samples taken from the monitor wells on June 25, 1998. In general, all pits have shown consistent reductions in BTEX concentrations with the total reduction being 32% during the past four quarters.

If you have any questions, please call me at (303) 293-9379.

Very truly yours,

Larry G. Sugano
Vice President - Engineering

cc: Wayne Price, NMOCD Hobbs Office

Enclosures



**Delineation Protocol
Tipperary Corporation
Tatum Pit Closure Project**

1.0 Purpose

This protocol is provide a detailed outline of the steps to be employed in the remediation and final closure of the Tipperary Tatum, New Mexico pits.

2.0 Scope

This protocol is site specific for the above stated site.

3.0 Define the Lateral Extent of Contamination

3.1 Whole Earth Environmental will contact Mr. Wayne Price of the Hobbs office of the NMOCD and request a site visit to five pits presently requiring lateral delineation. Mr. Price will select the best location for an additional monitoring well at each pit site. The location will be marked with pin flags and plotted on a plat map.

3.2 Atkins Engineering will be instructed to drill, case and develop an additional monitoring well at each pit site. Whole Earth will collect water samples in accordance with WEQP-76 (previously submitted) and transfer them to Environmental Labs of Tx. for testing. For purposes of defining the lateral extent of contamination we propose that a single BTEX measurement run in accordance with EPA Method 8020 be used.

3.3 The analysis will be reviewed by Whole Earth to confirm that the individual BTEX values all fall below NMWQCC standards. If not, we will repeat the steps contained within paragraph 3 of this protocol until the final results pass NMWQCC standards.

3.4 Once established, these delineation wells will not be subject to quarterly monitoring. They will be tested to insure acceptable concentrations of all criteria pollutants at the time of final pit closure.

4.0 Documentation & Reporting

4.1 At the conclusion of the pit remediation project, Whole Earth will prepare a closure report to include the following information:

- A plat map of the location showing the exact location of the pits, the location and orientation of all monitoring wells associated with the pit.
- Laboratory analyses of the BTEX concentration within the ground water.
- Well diagram to include the construction, soil morphology and final depth of the monitor wells.



Tipperary Tatum Pit Closure Project One Year Sampling Summary

Project History

Tipperary began the excavation and remediation of ten pit locations located west of Tatum, New Mexico in August 1997. The remediation protocol was to model the potential migration of all pits having hydrocarbon concentrations in excess of 1,000 ppm TPH and 10 ppm benzene, to determine their potential for impacting the Ogallala Aquifer. The model was "ground truthed" by the installation of twenty-four down gradient monitor wells. Free product was discovered within three monitor wells and wind driven recovery wells were erected to capture the hydrocarbons. The seven sites not having recovery wells were covered with 20 mil polyethylene liners to prevent any further potential vertical migration of hydrocarbons. Each monitoring well was sampled quarterly and the BTEX concentrations studied to determine trending.

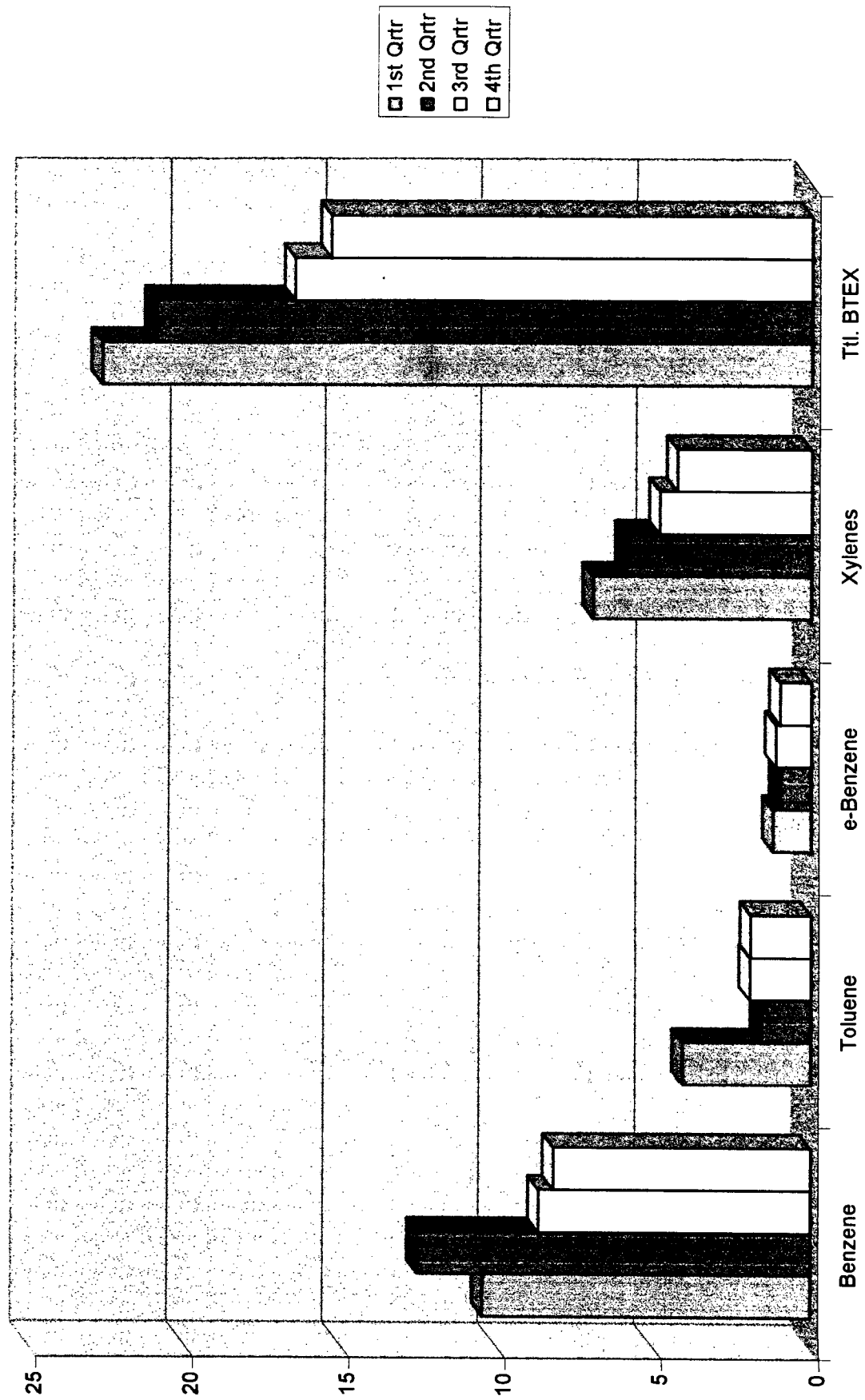
Present Status

One pit site is ready for closure having never shown BTEX concentrations in excess of WQCC standards. Three sites have shown two or more consecutive quarters with BTEX concentrations within WQCC standards. All remaining sites have shown consistent reductions in BTEX concentrations and will continue to be sampled quarterly until four consecutive quarters of acceptable results are obtained. The attached bar graph shows the total reduction in BTEX concentrations for all wells to have been 32% over the past year.

Future Activities

Tipperary will install an additional monitoring well at each of five sites to delineate the lateral extent of contamination. Those monitor wells not showing four consecutive quarters of acceptable BTEX concentrations will be monitored quarterly until they do.

One Year BTEX Survey



ENVIRONMENTAL LAB OF , INC.

"Don't Treat Your Soil Like Dirt!"

TIPPERARY
ATTN: MR. VICTOR A. VICE
P.O. BOX 857
TATUM, NM 88267
FAX: 1-281-646-8996

Receiving Date: 06/26/98
Sample Type: WATER
Project: TATUM, NM
Project Location: TATUM, NM

Analysis Date: 06/26/98
Sampling Date: 06/25/98
Sample Condition: Intact/Iced

ELT#	FIELD CODE	BENZENE (mg/l)	TOLUENE (mg/l)	ETHYLBENZENE (mg/l)	m,p-XYLENE (mg/l)	o-XYLENE (mg/l)
14657	IVA COM M/W #1	0.006	0.005	0.002	0.008	0.009
14658	MABLE COM M/W #3	0.009	0.011	0.009	0.033	0.009
14659	MABLE COM M/W #4	0.020	0.006	0.003	0.015	0.005
14660	VERA M/W #5	0.007	0.006	0.005	0.011	0.008
14661	BELL A M/W #6	0.203	0.008	0.015	0.017	0.006
14662	NBN M/W #7	0.009	0.007	0.007	0.016	0.009
14663	NBF M/W #8	0.034	0.003	0.007	0.011	0.003
14664	SATELITE #4 M/W #9	0.055	0.003	0.010	0.011	0.002
14665	SOHIO STATE #1 M/W #10	1.313	0.113	0.206	0.611	0.180
14666	SOHIO STATE A M/W #11	0.093	0.009	0.005	0.020	0.014
14667	BELL A M/W #13	0.016	0.014	0.005	0.015	0.006
14668	BELL A M/W #14	0.735	0.009	0.005	0.011	0.004
14669	NBF M/W #15	1.415	1.165	0.270	0.927	0.412
14670	NBF M/W #16	1.058	0.113	0.070	0.145	0.060
14671	SOHIO STATE #1 M/W #17	1.111	0.138	0.118	0.379	0.174
14672	SOHIO STATE #1 M/W #18	1.357	0.272	0.131	0.589	0.252
14673	SOHIO STATE A #1 M/W #19	0.029	0.010	0.007	0.022	0.011
14674	SOHIO STATE A #1 MW/ #20	0.517	0.009	0.008	0.061	0.009
14675	GS STATE #1 M/W #21	0.047	0.009	0.019	0.086	0.038
14676	GS STATE #1 M/W #22	0.183	0.012	0.062	0.077	0.010
14677	SATELITE #4 M/W #23	0.002	<.001	0.001	0.003	0.001
14678	SATELITE #4 M/W #24	0.003	0.003	0.002	0.006	0.003
14679	IVA COM WINDMILL SW #1	1.174	1.290	0.265	1.262	1.241
	% IA	99	95	92	90	94
	% EA	98	95	94	92	95
	BLANK	<0.001	<0.001	<0.001	<0.001	<0.001

METHODS: SW 846-8020,5030


Michael R. Fowler

7-7-98
Date

Environmental Lab of Texas, Inc. 12600 West I-20 East Odessa, Texas 79763
(915) 563-1800 FAX (915) 563-1713

CHAIN-OF-CUSTODY RECORD AND ANALYSIS REQUEST

Project Manager: VICTOR A. OLIVER		Phone #: 1-800-854-4358		FAX #:		ANALYSIS REQUEST									
Company Name & Address: TIPPERARY OIL & GAS P.O. Box 857		Project Name: Tatum, N. Mex 88267		Sampler Signature:		TCLP Metals Ag As Ba Cd Cr Pb Hg Se TCLP Metals Ag As Ba Cd Cr Pb Hg Se TCLP Semi Volatiles TCLP Volatiles TDS RCI Chloride									
Project #: Tatum, N. Mex 88267		Project Name:		Sampler Signature:		BTEX 8020/5030 TPH 418.1									
LAB # (LAB USE ONLY)	FIELD CODE	# CONTAINERS	Volume/Amount	MATRIX				PRESERVATIVE METHOD				SAMPLING		TIME	
				WATER	SOIL	AIR	SLUDGE	OTHER	HCL	HNO3	ICE	NONE	OTHER		DATE
14657	TUA Com M/W #1	1												6-25-98	
14658	Mahla Com M/W #3	1													
14659	" " " " #4	1													
14660	Uera M/W #5	1													
14661	Bella M/W #6	1													
14662	NBN M/W #7	1													
14663	URF M/W #8	1													
14664	SATELITE #4 M/W #9	1													
14665	Solo STARE #1 M/W #10	1													
14666	Solo STARE M/W #11	1													
Relinquished by:		Date:	Time:	Received by:		Time:		Remarks:							
Relinquished by:		Date:	Time:	Received by:		Time:		Remarks:							
Relinquished by:		Date:	Time:	Received by:		Time:		Remarks:							

RECEIVED

SEP 10 1998

ENVIRONMENTAL BUREAU
OIL CONSERVATION DIVISION

**Remediation Results
One Year Review
Sohio State "A" # 1**

Remediation Summary

The site was excavated to an approximate depth of 25' bgl., lined and three monitor wells installed down gradient from the pit center.

Present Status

All monitoring wells show a minor reduction in BTEX concentrations over the past year due in large part to the lack of recharge of the aquifer.

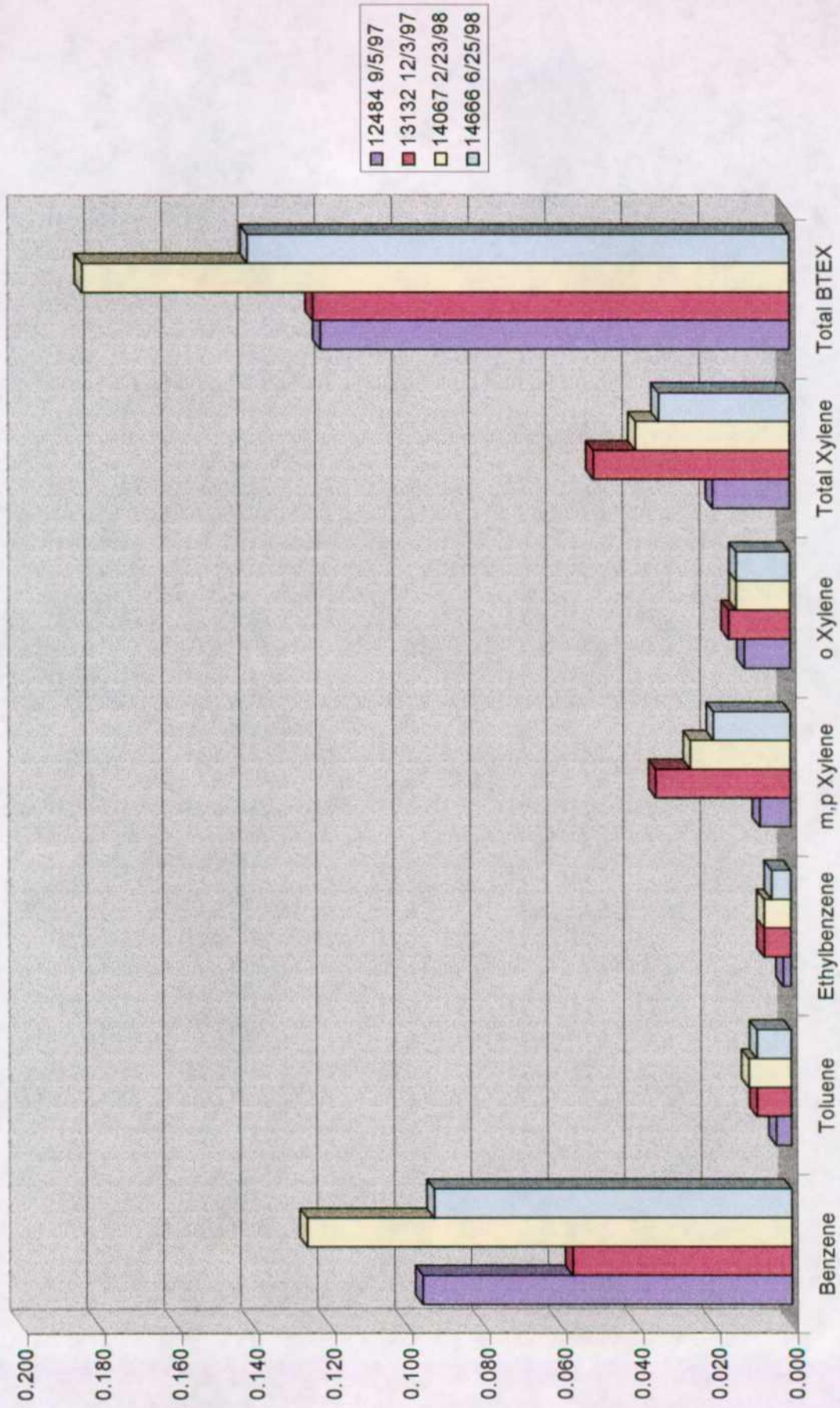
Future Remediation Activities

We will install a fourth monitoring well within thirty days of the OCD's approval of this plan.

Monitor Well # 11
Sohio State "A"
Sampling Results

Lab #	12484	13132	14067	14666
Sample Date	9/5/97	12/3/97	2/23/98	6/25/98
Benzene	0.096	0.057	0.126	0.093
Toluene	0.004	0.009	0.011	0.009
Ethylbenzene	0.002	0.007	0.007	0.005
m,p Xylene	0.008	0.035	0.026	0.02
o Xylene	0.012	0.016	0.014	0.014
Total Xylene	0.020	0.051	0.04	0.034
Total BTEX	0.122	0.124	0.184	0.141

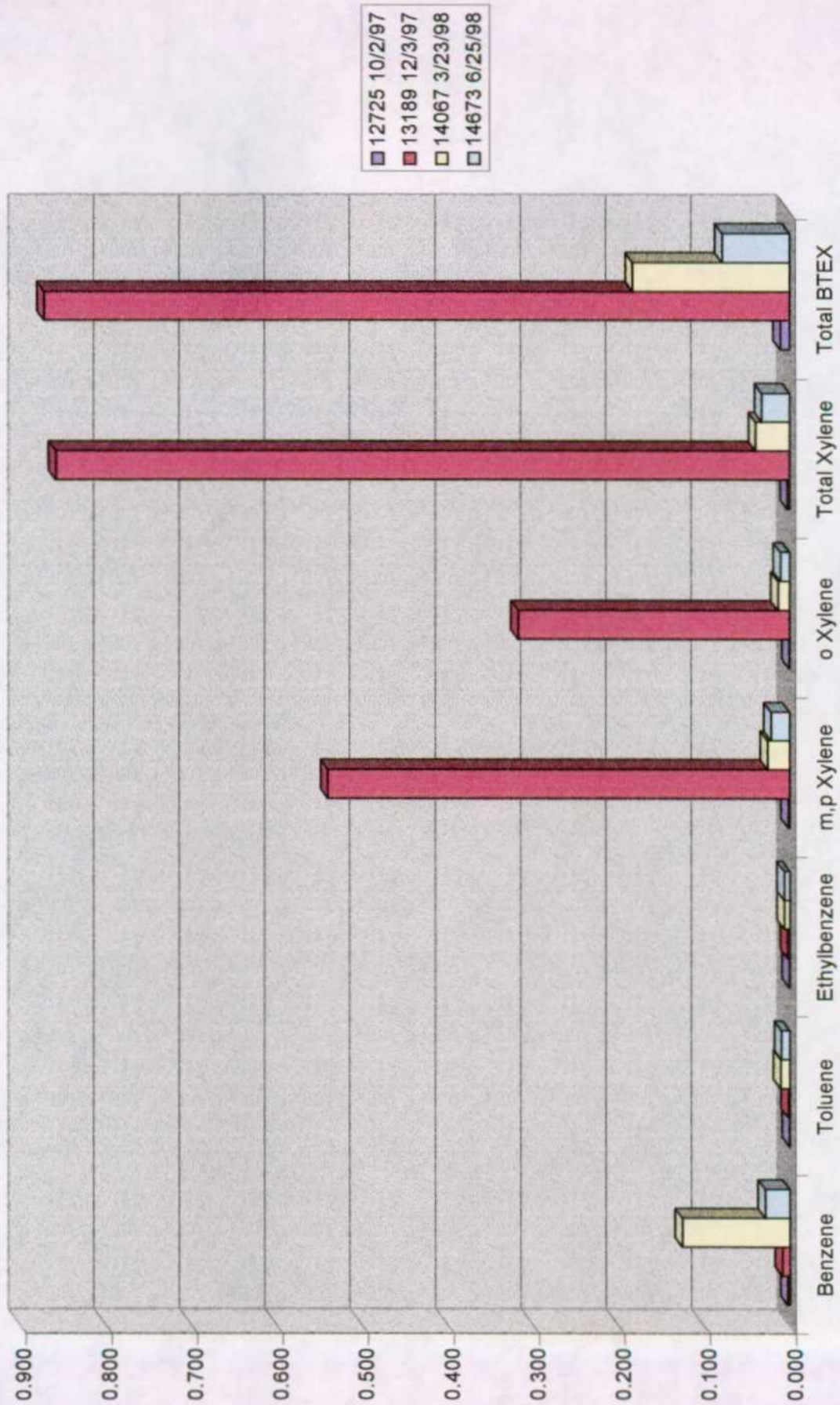
Monitor Well # 11



Monitor Well # 19
 Sohio State "A"
 Sampling Results

Lab. #	12725	13189	14067	14673
Sample Date	10/2/97	12/3/97	3/23/98	6/25/98
Benzene	0.003	0.009	0.126	0.029
Toluene	0.001	0.002	0.011	0.01
Ethylbenzene	0.001	0.003	0.007	0.007
m,p Xylene	0.002	0.541	0.026	0.022
o Xylene	0.001	0.318	0.014	0.011
Total Xylene	0.003	0.859	0.04	0.033
Total BTEX	0.011	0.873	0.184	0.079

Monitor Well # 19



Monitor Well # 20
 Sohio State "A"
 Sampling Results

Lab. #	12726	13190	14054	14674
Sample Date	10/2/97	12/3/97	3/23/98	6/25/98
Benzene	0.385	0.284	0.539	0.517
Toluene	0.009	0.005	0.016	0.009
Ethylbenzene	0.010	0.008	0.014	0.008
m,p Xylene	0.016	0.044	0.075	0.061
o Xylene	0.009	0.004	0.014	0.009
Total Xylene	0.025	0.048	0.089	0.07
Total BTEX	0.454	0.345	0.658	0.604

Monitor Well # 20

