

1R -

270

REPORTS

DATE:

1998



Tipperary
CORPORATION

633 Seventeenth Street
Suite 1550
Denver, Colorado 80202

November 20, 1998

CERTIFIED MAIL

Mr. William C. Olson
New Mexico Oil Conservation Division
2040 South Pacheco
Santa Fe, NM 87505

**RE: Tatum Pit Closure Project
Fifth Quarterly Progress Report
Sample Date of October 1, 1998
Lea County, NM**

RECEIVED

NOV 30 1998

ENVIRONMENTAL BUREAU
OIL CONSERVATION DIVISION

Dear Mr. Olson:

Please find enclosed additional results from our monitor wells in the subject project area. These results are from water samples taken on October 1, 1998. These samples represent the fifth quarter of monitoring. The total BTEX concentrations continue to decline. The Vera and Iva Com monitor wells now have at least four consecutive quarters of acceptable concentrations. We will continue to analyze water samples quarterly from the other monitor wells.

If you have any questions, please call me at (303) 293-9379.

Very truly yours,

Larry G. Sugano
Vice President - Engineering

cc: NMOCD Hobbs District Office

Enclosures



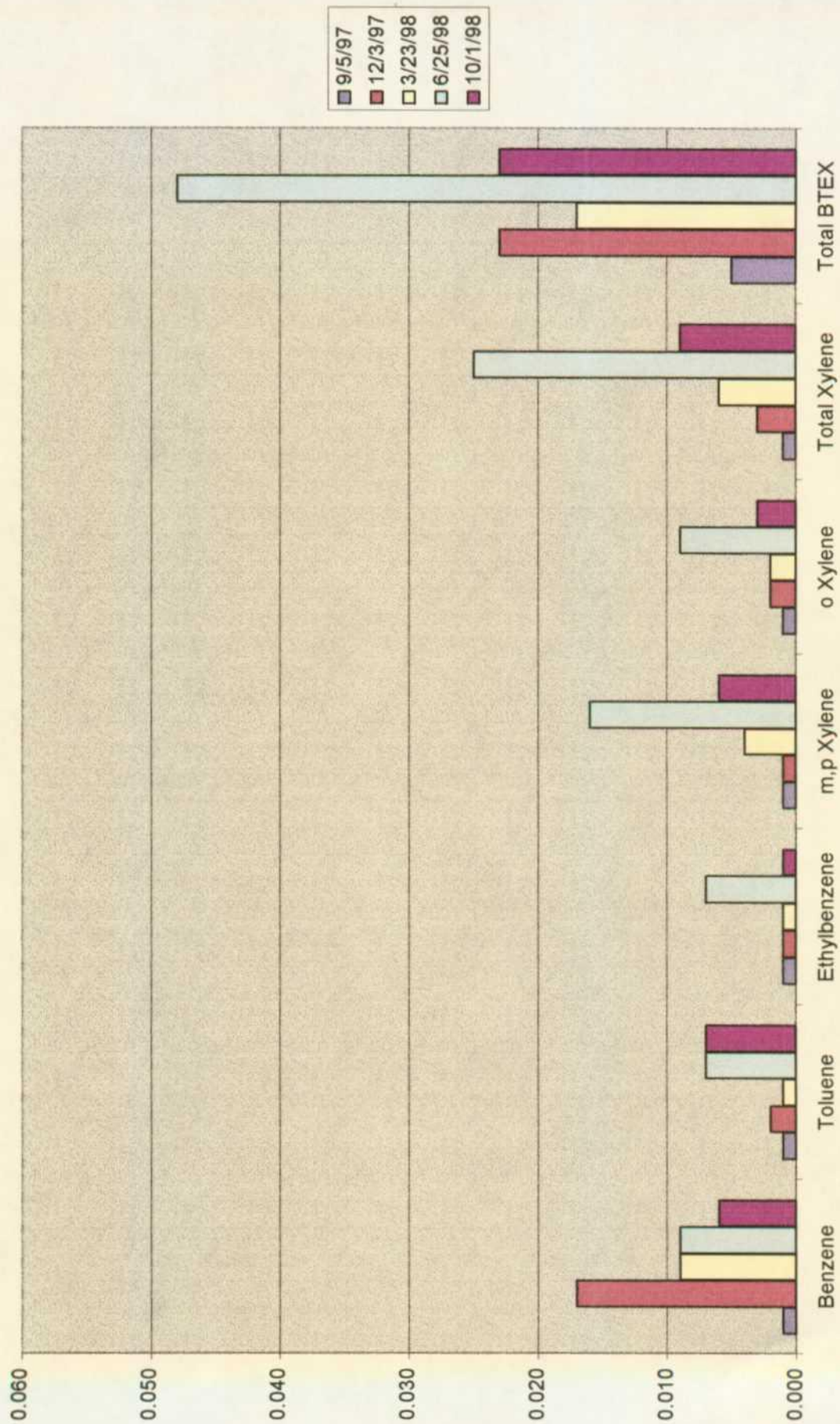
Tipperary
CORPORATION

TATUM PIT CLOSURE PROJECT
LEA COUNTY, NM
FIFTH QUARTERLY PROGRESS REPORT
SAMPLE DATE OF 10/1/98

Monitor Well # 7
State NBN # 1
Sampling Results

Lab. #	12482	13174	14063	14662	15594
Sample Date	9/5/97	12/3/97	3/23/98	6/25/98	10/1/98
Benzene	0.001	0.017	0.009	0.009	0.006
Toluene	0.001	0.002	0.001	0.007	0.007
Ethylbenzene	0.001	0.001	0.001	0.007	0.001
m,p Xylene	0.001	0.001	0.004	0.016	0.006
o Xylene	0.001	0.002	0.002	0.009	0.003
Total Xylene	0.001	0.003	0.006	0.025	0.009
Total BTEX	0.005	0.023	0.017	0.048	0.023

Monitor Well # 7



ENVIRONMENTAL LAB OF , INC.

"Don't Treat Your Soil Like Dirt!"

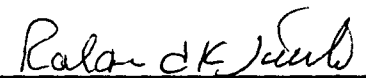
TIPPERARY
ATTN: MR. VICTOR A. VICE
P.O. BOX 857
TATUM, NM 88267
FAX: 505-398-6510
FAX: 281-646-8996

Receiving Date: 09/30/98
Sample Type: Water
Project: None Given
Project Location: Tatum, New Mexico

Analysis Date: 9/30 & 10/01/98
Sampling Date: 09/29/98
Sample Condition: Intact/Iced

ELT#	FIELD CODE	BENZENE (mg/l)	TOLUENE (mg/l)	ETHYLBENZENE (mg/l)	m,p-XYLENE (mg/l)	o-XYLENE (mg/l)
15590	Iva Corn M/W #1	0.004	0.004	0.002	0.006	0.007
15591	Mable Corn M/W #3	0.010	0.015	0.010	0.041	0.017
15592	Vera M/W #5	0.003	0.003	0.001	0.004	0.004
15593	Bell A M/W #6	0.130	0.002	0.003	0.004	0.002
15594	NBN M/W #7	0.006	0.007	0.001	0.006	0.003
15595	NBF M/W #8	0.005	0.004	0.001	0.004	0.004
15596	Satellite #4 M/W #9	0.036	0.002	0.006	0.003	0.001
15597	Sohio St. #1 M/W #10	2.541	0.106	0.182	0.167	0.098
15598	Sohio St. "A" M/W #11	0.070	0.010	0.003	0.014	0.011
15599	Bell A M/W #13	0.003	0.002	0.002	0.004	0.002
15600	NBF M/W #15	3.027	1.630	0.225	0.811	0.393
15601	Sohio St. #1 M/W #17	0.872	0.105	0.071	0.242	0.129
15602	Sohio St. "A" M/W #19	0.033	0.015	0.005	0.018	0.011
15603	G.S. State M/W #21	0.128	0.005	0.069	0.030	0.006
15604	Satellite #4 M/W #23	0.048	0.023	0.001	0.004	0.002
15605	Iva Corn M/W #2	0.003	0.002	<0.001	0.003	0.001
15606	Mable Corn M/W #4	0.007	0.002	<0.001	0.002	0.001
15607	Bell A M/W #14	0.175	0.002	0.001	0.002	0.001
15608	NBF M/W #16	1.046	0.065	0.037	0.100	0.039
15609	Sohio St. #1 M/W #18	0.542	0.072	0.025	0.093	0.054
15610	Sohio St. "A" M/W #20	0.464	0.011	0.008	0.045	0.011
15611	G.S. State M/W #22	0.049	0.011	0.026	0.040	0.018
15612	Satellite #4 M/W #24	0.002	0.001	<0.001	0.002	<0.001
% IA		100	94	91	90	95
% EA		98	97	93	91	93
BLANK		<0.001	<0.001	<0.001	<0.001	<0.001

METHODS: SW 846-8020,5030


Raland K. Tuttle

10-5-98
Date

Environmental Lab of Texas, Inc. 12600 West 1-20 East Odessa, Texas 79763 (915) 563-1800 FAX (915) 563-1713

CHAIN-OF-CUSTODY RECORD AND ANALYSIS REQUEST

Project Manager:

Vic Vice

Company Name & Address:

TIPPERARY OIL & GAS

Project #:

Project Name:

"Whole Earth" "Mike"

Project Location:

TATUM, New Mexico

Sampler Signature:

D.A. Durr

LAB # (LAB USE ONLY)	FIELD CODE	# CONTAINERS	Volume/Amount	MATRIX						PRESERVATIVE METHOD					SAMPLING	
				WATER	SOIL	AIR	SLUDGE	OTHER	HCL	HNO3	ICE	NONE	OTHER	DATE	TIME	
ISS90	IUA Com M/W #1 #2	1	1												9-28-98	
ISS91	Mable Com M/W #3 #4	1	1													
ISS92	Vera # M/W #5	1	1													
ISS93	Bella M/W #6	1	1													
ISS94	UBN M/W #7	1	1													
ISS95	NBF M/W #8	1	1													
ISS96	SATLITE #4 M/W #9	1	1													
ISS97	Solo ST #1 M/W #10	1	1													
ISS98	Solo ST #2 M/W #11	1	1													
ISS99	Bella M/W #13 #14	1	1													
ISS100	NBF M/W #15 #16	1	1													
Relinquished by:	Date:	Times:	OBSS						Received by:					REMARK		
for Quality	09-30-98								Zimmerman							
Relinquished by:	Date:	Times:							Received by:							
Relinquished by:	Date:	Times:							Received by Laboratory:							

Relinquished by:

[Signature]

Date:

09-30-98

Times:

0855

Received by:

[Signature]

REMARKS

Relinquished by:

Date:

Times:

Received by:

Received by Laboratory:

ANALYSIS REQUEST

TCLP Metals Ag As Ba Cd Cr Pb Hg Se
TCLP Metals Ag As Ba Cd Cr Pb Hg Se
TCLP Volatiles
TCLP Semi Volatiles
TDS
RCI

BTEX 80/20/50/30
TPH 418.1

CHAIN-OF-CUSTODY RECORD AND ANALYSIS REQUEST

Phone #: 505-398-6507

FAX #: 505-398-6510

1-800-854-4358

Wild. & A. T. "Mike",

Project Name:

Sampler Signature:

TATUM, New Mexico

RTX 8020/5030	TPH 418.1	TCLP Metals Ag As Ba Cd Cr Pb Hg Se	Total Metals Ag As Ba Cd Cr Pb Hg Se	TCLP Volatiles	TCLP Semi Volatiles	TDS	RCI
---------------	-----------	-------------------------------------	--------------------------------------	----------------	---------------------	-----	-----

Date:

Times:

09-30-98

Received by:

Erasmus

Date _____

Times:

Received by:

Date: _____

Times:

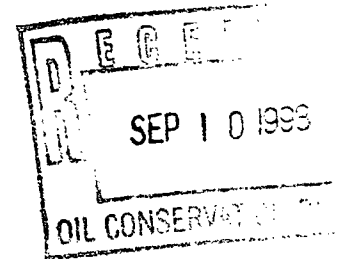
Received by Laboratory:

REMARKS



Tipperary
CORPORATION

633 Seventeenth Street
Suite 1550
Denver, Colorado 80202



September 8, 1998

CERTIFIED MAIL

Mr. William C. Olson
New Mexico Oil Conservation Division
2040 South Pacheco
Santa Fe, NM 87505

**RE: Work Plan & 6/98 Progress Report
Tatum Pit Closure Project
Lea County, NM**

Dear Mr. Olson:

In response to your June 29, 1998 correspondence, please find enclosed the following:

1. A delineation work plan as requested for the pits requiring additional lateral data.
2. Additional results from the closure of ten pits in the project area. These results are from water samples taken from the monitor wells on June 25, 1998. In general, all pits have shown consistent reductions in BTEX concentrations with the total reduction being 32% during the past four quarters.

If you have any questions, please call me at (303) 293-9379.

Very truly yours,

Larry G. Sugano
Vice President - Engineering

cc: Wayne Price, NMOCD Hobbs Office

Enclosures



**Delineation Protocol
Tipperary Corporation
Tatum Pit Closure Project**

1.0 Purpose

This protocol is provide a detailed outline of the steps to be employed in the remediation and final closure of the Tipperary Tatum, New Mexico pits.

2.0 Scope

This protocol is site specific for the above stated site.

3.0 Define the Lateral Extent of Contamination

3.1 Whole Earth Environmental will contact Mr. Wayne Price of the Hobbs office of the NMOCD and request a site visit to five pits presently requiring lateral delineation. Mr. Price will select the best location for an additional monitoring well at each pit site. The location will be marked with pin flags and plotted on a plat map.

3.2 Atkins Engineering will be instructed to drill, case and develop an additional monitoring well at each pit site. Whole Earth will collect water samples in accordance with WEQP-76 (previously submitted) and transfer them to Environmental Labs of Tx. for testing. For purposes of defining the lateral extent of contamination we propose that a single BTEX measurement run in accordance with EPA Method 8020 be used.

3.3 The analysis will be reviewed by Whole Earth to confirm that the individual BTEX values all fall below NMWQCC standards. If not, we will repeat the steps contained within paragraph 3 of this protocol until the final results pass NMWQCC standards.

3.4 Once established, these delineation wells will not be subject to quarterly monitoring. They will be tested to insure acceptable concentrations of all criteria pollutants at the time of final pit closure.

4.0 Documentation & Reporting

4.1 At the conclusion of the pit remediation project, Whole Earth will prepare a closure report to include the following information:

- A plat map of the location showing the exact location of the pits, the location and orientation of all monitoring wells associated with the pit.
- Laboratory analyses of the BTEX concentration within the ground water.
- Well diagram to include the construction, soil morphology and final depth of the monitor wells.



Tipperary Tatum Pit Closure Project One Year Sampling Summary

Project History

Tipperary began the excavation and remediation of ten pit locations located west of Tatum, New Mexico in August 1997. The remediation protocol was to model the potential migration of all pits having hydrocarbon concentrations in excess of 1,000 ppm TPH and 10 ppm benzene, to determine their potential for impacting the Ogallala Aquifer. The model was "ground truthed" by the installation of twenty-four down gradient monitor wells. Free product was discovered within three monitor wells and wind driven recovery wells were erected to capture the hydrocarbons. The seven sites not having recovery wells were covered with 20 mill polyethylene liners to prevent any further potential vertical migration of hydrocarbons. Each monitoring well was sampled quarterly and the BTEX concentrations studied to determine trending.

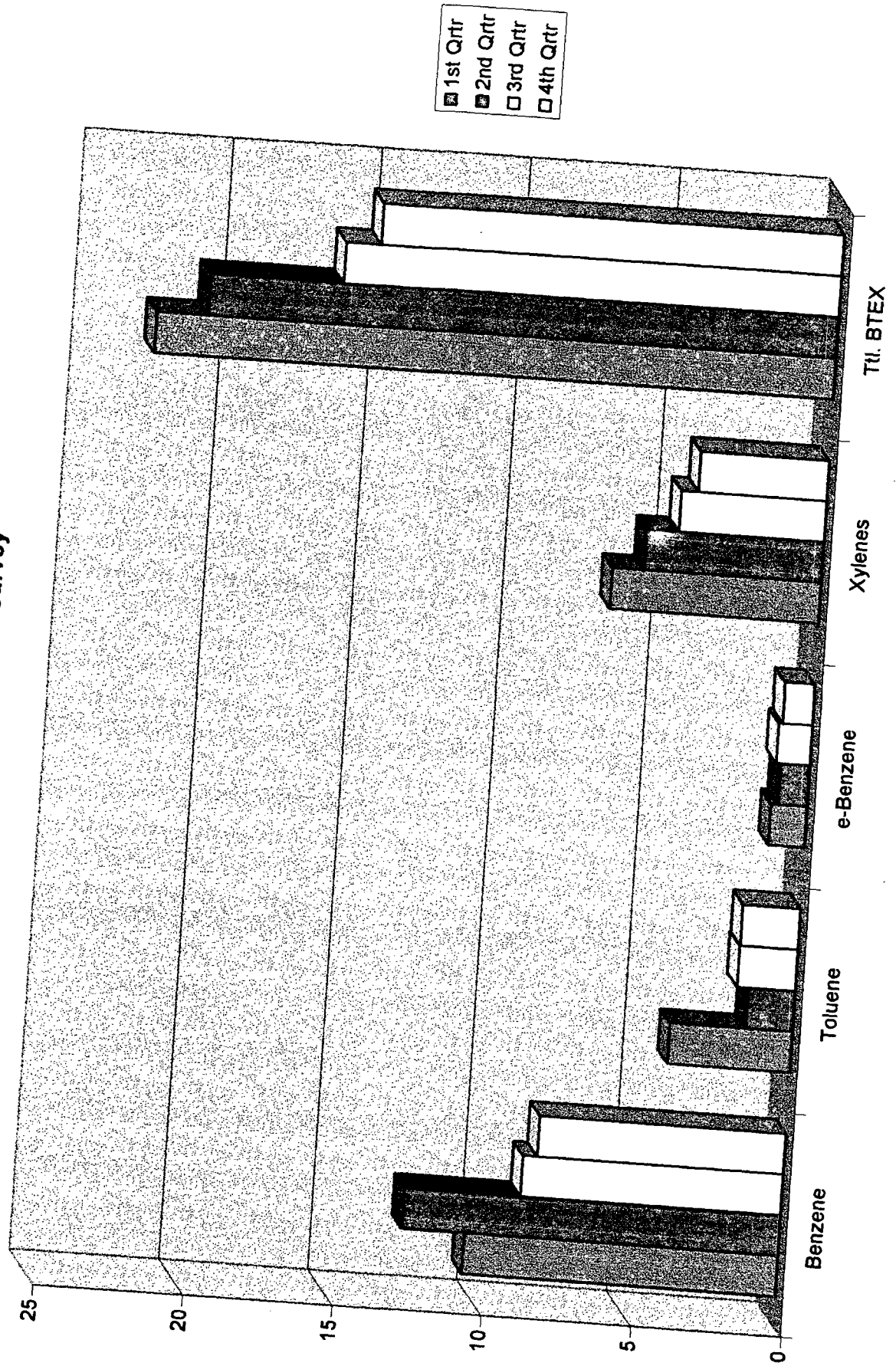
Present Status

One pit site is ready for closure having never shown BTEX concentrations in excess of WQCC standards. Three sites have shown two or more consecutive quarters with BTEX concentrations within WQCC standards. All remaining sites have shown consistent reductions in BTEX concentrations and will continue to be sampled quarterly until four consecutive quarters of acceptable results are obtained. The attached bar graph shows the total reduction in BTEX concentrations for all wells to have been 32% over the past year.

Future Activities

Tipperary will install an additional monitoring well at each of five sites to delineate the lateral extent of contamination. Those monitor wells not showing four consecutive quarters of acceptable BTEX concentrations will be monitored quarterly until they do.

One Year BTEX Survey



ENVIRONMENTAL LAB OF , INC.

"Don't Treat Your Soil Like Dirt!"

TIPPERARY
ATTN: MR. VICTOR A. VICE
P.O. BOX 857
TATUM, NM 88267
FAX: 1-281-646-8996

Receiving Date: 06/26/98
Sample Type: WATER
Project : TATUM, NM
Project Location: TATUM, NM

Analysis Date: 06/26/98
Sampling Date: 06/25/98
Sample Condition: Intact/Iced

ELT#	FIELD CODE	BENZENE (mg/l)	TOLUENE (mg/l)	ETHYLBENZENE (mg/l)	m,p-XYLENE (mg/l)	o-XYLENE (mg/l)
14657	IVA COM M/W #1	0.006	0.005	0.002	0.008	0.009
14658	MABLE COM M/W #3	0.009	0.011	0.009	0.033	0.009
14659	MABLE COM M/W #4	0.020	0.006	0.003	0.015	0.005
14660	VERA M/W #5	0.007	0.006	0.005	0.011	0.008
14661	BELL A M/W #6	0.203	0.008	0.015	0.017	0.006
14662	NBN M/W #7	0.009	0.007	0.007	0.016	0.009
14663	NBF M/W #8	0.034	0.003	0.007	0.011	0.003
14664	SATELITE #4 M/W #9	0.055	0.003	0.010	0.011	0.002
14665	SOHIO STATE #1 M/W #10	1.313	0.113	0.206	0.611	0.180
14666	SOHIO STATE A M/W #11	0.093	0.009	0.005	0.020	0.014
14667	BELL A M/W #13	0.016	0.014	0.005	0.015	0.006
14668	BELL A M/W #14	0.735	0.009	0.005	0.011	0.004
14669	NBF M/W #15	1.415	1.165	0.270	0.927	0.412
14670	NBF M/W #16	1.058	0.113	0.070	0.145	0.060
14671	SOHIO STATE #1 M/W #17	1.111	0.138	0.118	0.379	0.174
14672	SOHIO STATE #1 M/W #18	1.357	0.272	0.131	0.589	0.252
14673	SOHIO STATE A #1 M/W #19	0.029	0.010	0.007	0.022	0.011
14674	SOHIO STATE A #1 M/W #20	0.517	0.009	0.008	0.061	0.009
14675	GS STATE #1 M/W #21	0.047	0.009	0.019	0.086	0.038
14676	GS STATE #1 M/W #22	0.183	0.012	0.062	0.077	0.010
14677	SATELITE #4 M/W #23	0.002	<.001	0.001	0.003	0.001
14678	SATELITE #4 M/W #24	0.003	0.003	0.002	0.006	0.003
14679	IVA COM WINDMILL SW #1	1.174	1.290	0.265	1.262	1.241
	% IA	99	95	92	90	94
	% EA	98	95	94	92	95
	BLANK	<0.001	<0.001	<0.001	<0.001	<0.001

METHODS: SW 846-8020,5030


Michael R. Fowler

7-7-98
Date

Environmental Lab of Texas, Inc. 12600 West I-20 East Odessa, Texas 79763
(915) 563-1800 FAX (915) 563-1713

CHAIN-OF-CUSTODY RECORD AND ANALYSIS REQUEST

Project Manager: VICTOR A. OLIVE		Phone #: 1-800-854-4358		FAX #:		ANALYSIS REQUEST																
Company Name & Address: TIPERARY OIL & GAS P.O. Box 857		Project Name:		Project Name:																		
Project #: TATUM, N. MEX 88267		Sampler Signature:		Sampler Signature:																		
Project Location: TATUM, N. M.																						
LAB # (LAB USE ONLY)	FIELD CODE	# CONTAINERS	Volume/Amount	MATRIX				PRESERVATIVE METHOD				SAMPLING		TIME	TCLP Metals Ag As Ba Cd Cr Pb Hg Se	TCLP Metals Ag As Ba Cd Cr Pb Hg Se	TCLP Semi Volatiles	TDS	RCI	Other		
				WATER	SOIL	AIR	SLUDGE	OTHER	HCL	HNO3	ICE	NONE	OTHER								DATE	
14657	Tua Com M/W #1	1												6-25-98								
14658	Maha Com M/W #3	1																				
14659	u u u #4	1																				
14660	Uera M/W #5	1																				
14661	Bella M/W #6	1																				
14662	NBN M/W #7	1																				
14663	URF M/W #8	1																				
14664	Satchite #4 M/W #9	1																				
14665	Sohio STARE #1 M/W #10	1																				
14666	Sohio STARE M/W #11	1																				
Relinquished by:		Date:	Time:	Received by:		REMARKS																
Relinquished by:		Date:	Time:	Received by:																		
Relinquished by:		Date:	Time:	Received by Laboratory:																		

RECEIVED

SEP 10 1998

ENVIRONMENTAL BUREAU
OIL CONSERVATION DIVISION

**Remediation Results
One Year Review
State NBN**

Remediation Summary

The site was excavated to an approximate depth of 20' bgl., lined and a monitor well installed down gradient from the pit center.

Present Status

The monitoring well has shown two consecutive quarters of BTEX concentrations below WQCC acceptance standards.

Future Remediation Activities

We will continue to sample the monitor well for two more rounds. If the concentrations remain at acceptable levels, we will request a split sample test with the OCD to close the site.

Monitor Well # 7
State NBN # 1
Sampling Results

Lab. #	12482	13174	14063	14662
Sample Date	9/5/97	12/3/97	3/23/98	6/25/98
Benzene	0.001	0.017	0.009	0.009
Toluene	0.001	0.002	0.001	0.007
Ethylbenzene	0.001	0.001	0.001	0.007
m,p Xylene	0.001	0.001	0.004	0.016
o Xylene	0.001	0.002	0.002	0.009
Total Xylene	0.001	0.003	0.006	0.025
Total BTEX	0.005	0.023	0.017	0.048

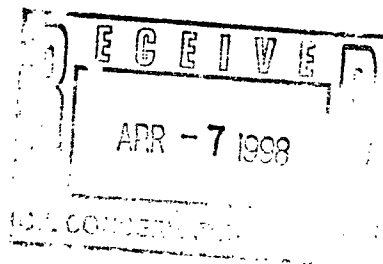
Monitor Well # 7





Tipperary
CORPORATION

633 Seventeenth Street
Suite 1550
Denver, Colorado 80202



April 2, 1998

CERTIFIED MAIL

Mr. William C. Olson
New Mexico Oil Conservation Division
2040 South Pacheco
Santa Fe, NM 87505

**RE: Progress Report
Tatum Pit Closure Project
Lea County, NM**

Dear Mr. Olson:

Please find enclosed additional results from our monitor wells in the subject project area. These results are from water samples taken on March 23, 1998. The total BTEX concentrations have declined significantly from the December 1997 sample results. We are currently planning to analyze water samples quarterly from the project monitor wells.

If you have any questions, please call me at (303) 293-9379.

Very truly yours,

Larry G. Sugano
Vice President - Engineering

cc: Wayne Price, NMOCD Hobbs Office

Enclosure





**Executive Summary
Tipperary Corporation
Tatum Pit Closure Project
March, 1998 Well Sampling**

Procedures

On March 23, 1998, Mr. Vic Vice, Tipperary Production Foreman, sampled the fluid contents of twenty-three monitoring wells in accordance with WEQP-76. The samples were delivered the next day to Environmental Labs of Texas and results provided to Whole Earth Environmental on March 26, 1998. Analysis methods and QA / QC data are provided on the laboratory report.

Whole Earth prepared various spreadsheets and graphs comparing the results to those of two prior sampling events.

Results

The total BTEX concentrations within the monitoring wells are shown to decline by an average of 20% per quarter. There was a 39% increase in the number of wells having all individual BTEX compound concentrations within WQCC standards. Though benzene remains the principal contaminant, the benzene concentrations were reduced by an average of 31% from the December sampling indicating that the "slug" resultant from the closure activities is now passing the monitoring perimeter.

Conclusions

The process of natural attenuation is demonstrated to be working. In June one and possibly two pit sites should be considered for final closure as it is expected that they will have shown four consecutive quarters of BTEX concentrations falling below New Mexico WQCC standards.

The construction of any additional delineation wells is not recommended at this time. One additional sampling round should provide us with enough statistical data to forecast which wells (if any) will require further testing.



**Tipperary Corporation
Sampling Instructions
June 1, 1998 Sampling Round**

1. Sample Monitor Wells # 1-24 as performed on 3/23/98 sampling round.
2. Sample Iva COM source well for BTEX. If results are acceptable, we will then immediately test for PAH's. If PAH results are acceptable, we will request formal closure from the State. *(The State may require additional witnessed sampling for final closure).*
3. Sample Vera for PAH's. Use 1 liter amber jar with no preservatives for PAH and 1 liter clear jar with H₂SO₄ preservative for metals in addition to your normal BTEX sample vial. If PAH's are acceptable, we will request immediate closure. *(PAH & RCRA 8 metals were all within limits on 9/5/97 sampling).*
4. Save G.S. State monitor well # 12 for last. Pump well bore for at least 30 minutes in an attempt to remove all of the free product from the sample. If free product is still present, forward the sample to the lab anyway with instructions to additionally run TPH analysis.

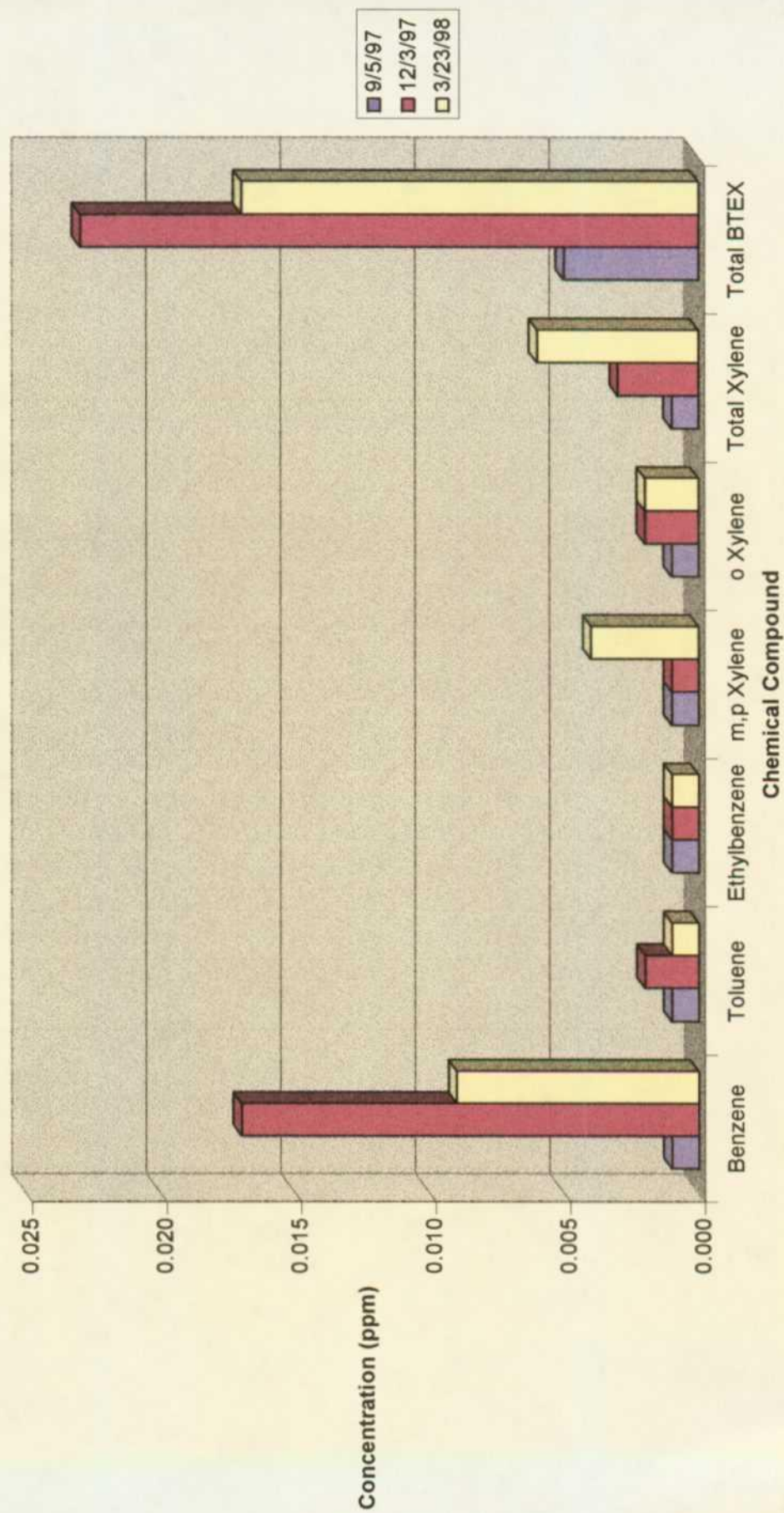
Monitor Well # 7

State NBN # 1

Sampling Results

Lab. #	12482	13174	14063
Sample Date	9/5/97	12/3/97	3/23/98
Benzene	0.001	0.017	0.009
Toluene	0.001	0.002	0.001
Ethylbenzene	0.001	0.001	0.001
m,p Xylene	0.001	0.001	0.004
o Xylene	0.001	0.002	0.002
Total Xylene	0.001	0.003	0.006
Total BTEX	0.005	0.023	0.017

Monitor Well # 7





State of New Mexico
ENERGY, MINERALS and NATURAL RESOURCES DEPARTMENT
Santa Fe, New Mexico 87505

STATE OF
NEW MEXICO
OIL
CONSERVATION
DIVISION

MEMORANDUM OF MEETING OR CONVERSATION

☒ Telephone ☐ Personal

Time 1530

Date 9/22/97

Originating Party

Other Parties

Bill Olson - Environmental Bureau

Bob Fehlmann - Tipperary Corp.
(303) 293-9379

Subject

Tipperary Pit Closures - Tatum, NM

Discussion

Gave verbal approval of 9/22/97 fax from Mike Griffin with following conditions:

1.) Monitor well construction, water quality sampling and waste disposal will be conducted according to OCD.

June 4, 1997 approval conditions

2.) Wayne Price of OCD Hobbs will be contacted about the drilling and sampling schedule

Also expressed concern about source well located 60' from pit instead of directly adjacent to pit as required in OCD's 6/4/97 approval

Conclusions or Agreements

I will fax copy of verbal approval to Tipperary at (303) 291-0398

Distribution

Signed

Will Olson

file.
Bob Fehlmann - Tipperary (fax copy)
Wayne Price - OCD Hobbs



Whole Earth
Environmental

19606 S. Gabriel
Houston, TX 77084
Phone: (281) 492-7077
Fax: (281) 646-8996

FAX COVER PAGE

To: Bill Olsen

From: Mike Griffin

Company: NM O C D

Company: Whole Earth Environmental, Inc.

Fax No.: (505) 827-8177

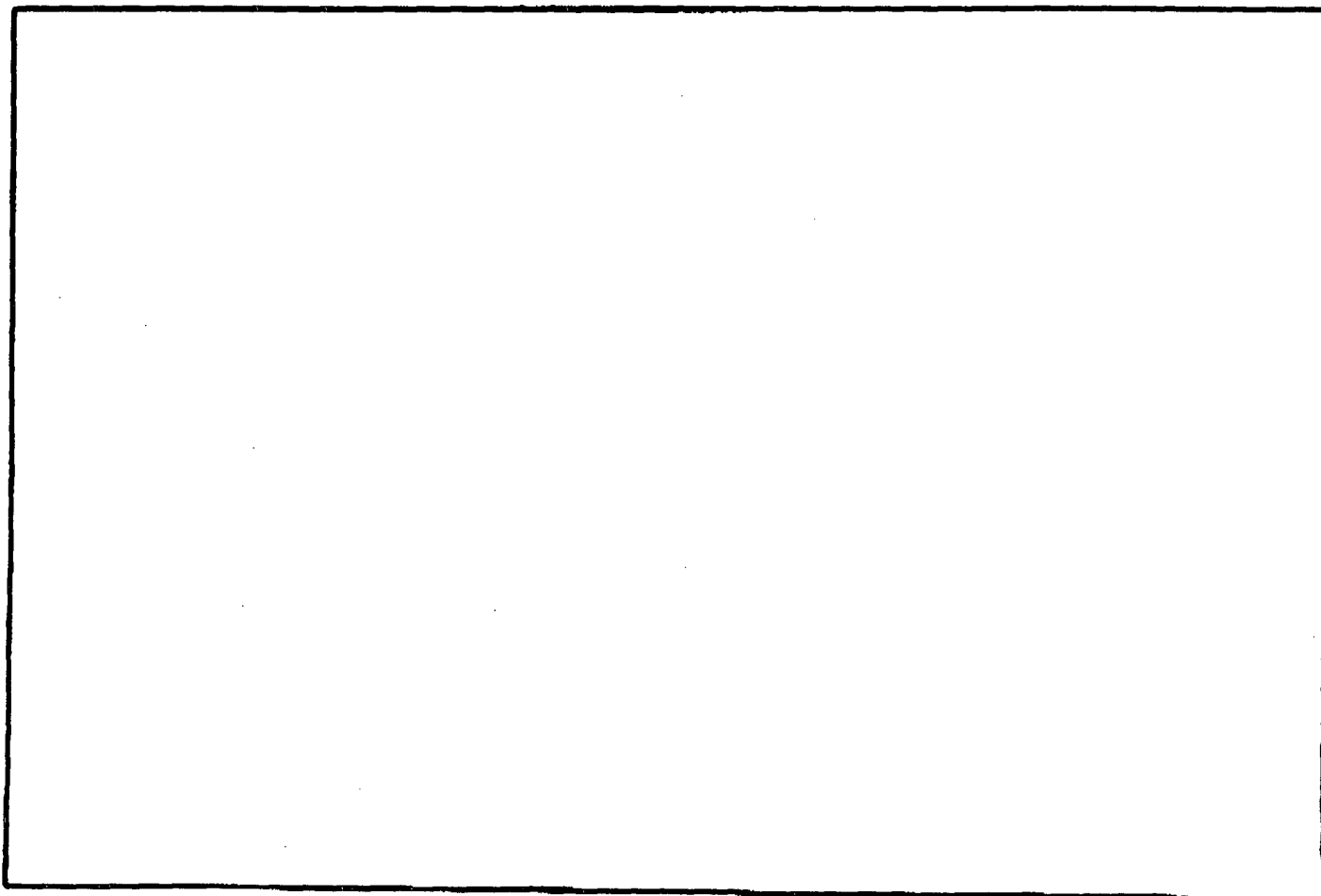
Pages including cover sheet: 3

Subject:

Extension Request

Message:

Date: 9/22/97





To: Bill Olsen

From: Mike Griffin

Date: September 9, 1997

Subject: Extension Request

Sent by FAX to: (505) 827-8177

Bill, as you know we experienced an unforeseen delay in completing the Tipperary Tatum Pit Closure Project due to the discovery of detectable BTEX concentrations on five pit locations and the presence of free product in the G.S. State monitoring well. (Reference two letters Bob Fehlmann of Tipperary to you dated Sept. 11).

The new monitoring and recovery wells will be drilled beginning the morning of the 25th and will be sampled as soon as possible thereafter. We request an additional extension for project completion to the end of October.

By copy of this memorandum, I'm notifying Mr. Wayne Price of your Hobbe office as to the new schedule and will further advise him telephonically in advance of the final sampling events so as to allow him to witness.

Please advise if this causes any problems for you.

Typical Location of Monitoring Wells

