

3R - 231

REPORTS

DATE:

2001

Certified Mail: #7001 1940 0003 1553 8513

February 28, 2002

RECEIVED

MAR 04 2002

ENVIRONMENTAL BUREAU
OIL CONSERVATION DIVISION

Mr. William C. Olson
New Mexico Oil Conservation Division
1220 St. Francis Dr.
Santa Fe, NM 87504

RE: 2001 Pit Project Annual Groundwater Report

Dear Mr. Olson:

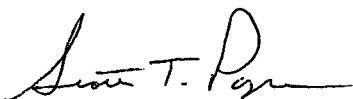
In accordance with reporting requirements, El Paso Field Services (EPFS) has enclosed annual reports for the 30 remaining groundwater impacted sites that were identified during our pit closure project of 1994 / 1995.

EPFS has organized the 30 reports (Volumes IA, IB, II and III), reports by land type. Volume IA and IB contain annual reports for sites found on Federal land. Volume II contains Non Federal sites and Volume III contains sites on Navajo land. Of the 30 reports submitted EPFS is requesting closure of three sites located on Navajo lands. Of the three Navajo sites submitted for closure OCD has closed the Charley Pah #4 and the John Charles #8. The Rementa et al #1 has not been closed by either agency. EPFS understands closure of groundwater sites on Navajo land falls under jurisdiction of the Navajo Environmental Protection Agency and original documents have been submitted to them for review. Other Navajo sites are included in the report for your information.

The Jaquez Com. C #1 and Jaquez Com. E #1 site is not included in with this report and will be submitted by the required deadline of April 1, 2002.

If you have any questions concerning the enclosed reports, please call me at (505) 599-2124.

Sincerely,



Scott T. Pope P.G.
Senior Environmental Scientist

xc: Mr. Denny Foust, NMOCD, Aztec - w / enclosures; **Certified Mail # 7001 1940 0003 1553 8506**
Mr. Bill Liesse, BLM - w / enclosures (federal sites only), **Certified Mail # 7001 1940 0003 1553 8520**

SAN JUAN BASIN PIT CLOSURES

San Juan Basin, New Mexico

**El Paso Field Services
Pit Project Groundwater Sites
Annual Report
Volume III-Navajo Sites**

March 2002

Prepared for

**El Paso Field Services
Farmington, New Mexico**



MWH
MONTGOMERY WATSON HARZA

EL PASO FIELD SERVICES ANNUAL GROUNDWATER REPORT

NAVAJO SITES VOLUME III

TABLE OF CONTENTS

Site Map

METER or LINE ID	SITE NAME	TOWNSHIP	RANGE	SECTION	UNIT
95608	Gallegos Canyon Unit #124E	28N	12W	35	N
71816	Jepnehah #1	28N	09W	36	H
75155	Ramona et al #1	27N	09W	13	J
93126	John Charles #8	27N	09W	13	B
71531	Charley Pah #4	27N	09W	12	K



MWH
MONTGOMERY WATSON HARZA

ACRONYMS

B	Benzene
E	Ethylbenzene
EPFS	El Paso Field Services
ft	foot/feet
GWEL	groundwater elevation
ID	identifier
MW	Monitoring Well
PSH	Phase Separated Hydrocarbons
NMWQCC	New Mexico Water Quality Control Commission
T	Toluene
TOC	Top Of Casing
NE	not established
NS	not sampled
ORC	oxygen release compound
OCD	Oil Conservation Division
ppb	parts per billion
µg/L	micrograms per liter
X	Total Xylenes

Certified Mail: #7001 1940 0003 1553 8513

February 28, 2002

RECEIVED

MAR 04 2002

ENVIRONMENTAL BUREAU
OIL CONSERVATION DIVISION

Mr. William C. Olson
New Mexico Oil Conservation Division
1220 St. Francis Dr.
Santa Fe, NM 87504

RE: 2001 Pit Project Annual Groundwater Report

Dear Mr. Olson:

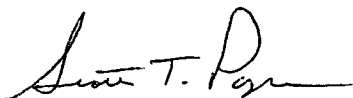
In accordance with reporting requirements, El Paso Field Services (EPFS) has enclosed annual reports for the 30 remaining groundwater impacted sites that were identified during our pit closure project of 1994 / 1995.

EPFS has organized the 30 reports (Volumes IA, IB, II and III), reports by land type. Volume IA and IB contain annual reports for sites found on Federal land. Volume II contains Non Federal sites and Volume III contains sites on Navajo land. Of the 30 reports submitted EPFS is requesting closure of three sites located on Navajo lands. Of the three Navajo sites submitted for closure OCD has closed the Charley Pah #4 and the John Charles #8. The Rementa et al #1 has not been closed by either agency. EPFS understands closure of groundwater sites on Navajo land falls under jurisdiction of the Navajo Environmental Protection Agency and original documents have been submitted to them for review. Other Navajo sites are included in the report for your information.

The Jaquez Com. C #1 and Jaquez Com. E #1 site is not included in with this report and will be submitted by the required deadline of April 1, 2002.

If you have any questions concerning the enclosed reports, please call me at (505) 599-2124.

Sincerely,



Scott T. Pope P.G.
Senior Environmental Scientist

xc: Mr. Denny Foust, NMOCD, Aztec - w / enclosures; **Certified Mail # 7001 1940 0003 1553 8506**
Mr. Bill Liesse, BLM - w / enclosures (federal sites only), **Certified Mail # 7001 1940 0003 1553 8520**

EPFS GROUNDWATER PITS 2001 ANNUAL GROUNDWATER REPORT

Ramenta et al #1
Meter Code: 75155

SITE DETAILS

Legals Twn: 27N Rng: 09W Sec: 13 UNIT: J
NMOCD Haz Ranking: 30 Land Type: Navajo Operator: Burlington Resources

PREVIOUS ACTIVITIES

Site Assessment: Jun-96 Excavation: Nov-96 (436cy) Soil Boring: May-97 Monitor Well: May-97
Geoprobe: Feb-97 Additional MWs: Jun-99 Downgradient MW's: Jun-99 Replace MW: NA
PSH Removal Initiated: NA ORC Nutrient Injection: NA Re-Excavation: NA
Quarterly Initiated: Jun-97 Annual Initiated NA Quarterly Resumed: NA

2001 ACTIVITY

Groundwater monitoring - Quarterly monitoring continued through 2001 at MW-1. Semi-annual monitoring continued through 2001 at MW-2 and MW-3.

SUMMARY TABLES AND GRAPHS

Groundwater analytical data are presented in Table 1. Copies of the laboratory data sheets and the associated quality assurance/quality control data are presented as Attachment 1. Included are BTEX Data graphs for MW-1 through MW-3.

SITE MAP

Site Maps with BTEX concentrations and groundwater elevations are attached.

GEOLOGIC LOGS AND WELL COMPLETION DIAGRAMS

No drilling activities were performed at this site for 2001.

DISPOSITION OF GENERATED WASTES

No wastes were generated at this site for 2001.

EPFS GROUNDWATER PITS 2001 ANNUAL GROUNDWATER REPORT

Ramenta et al #1
Meter Code: 75155

ISOCONCENTRATION MAPS

No isoconcentration maps were generated at this site.

CONCLUSIONS

Only a single sampling event for MW-1 was at 10 ppb benzene for the September 2001 sampling event and less than 10 ppb benzene for the remaining three quarters sampled in 2001. The benzene concentration in this well for the last quarter of 2000 was also below 10 ppb benzene. Hydrocarbon concentrations were less than detection limits for the first quarter of 2002.

Groundwater flow is towards the northeast.

Downgradient wells MW-2 and MW-3 were each sampled semi-annually - all benzene concentrations were below detection limits. These wells have always been less than analytical laboratory detection limits for hydrocarbon constituents.

This is a remote site with no third party receptors proximal to the site.

RECOMMENDATIONS

- > EPFS requests closure at this site based on six consecutive quarters at or below NMWQCC standards. All additional closure data is included in this report.
- > EPFS will continue quarterly sampling of MW-1 and annual sampling of MW-2 and MW-3 pending receipt of closure approval.
- > Following approval for closure, MW-1, MW-2, and MW-3 will be abandoned using approved guidelines.

FIELD PIT SITE ASSESSMENT FORM

GENERAL

Meter: 75-155 Location: Ramona E+AL #1
 Operator #: 1987 Operator Name: Meadow P/L District: HUERFANO
 Coordinates: Letter: J Section 13 Township: 22 Range: 09
 Or Latitude _____ Longitude _____
 Pit Type: Dehydrator Location Drip: _____ Line Drip: _____ Other: _____
 Site Assessment Date: 06-24-96 Area: 07 Run: 62

SITE ASSESSMENT

NMOCD Zone: (From NMOCD Maps) **Land Type:**

Inside	<input checked="" type="checkbox"/> (1)	BLM	<input type="checkbox"/> (1)
Outside	<input type="checkbox"/> (2)	State	<input type="checkbox"/> (2)
		Fee	<input type="checkbox"/> (3)
		Indian	<u>NAVAJO</u>

Depth to Groundwater

Less Than 50 Feet (20 points)	<input checked="" type="checkbox"/> (1)
50 Ft to 99 Ft (10 points)	<input type="checkbox"/> (2)
Greater Than 100 Ft (0 points)	<input type="checkbox"/> (3)

Wellhead Protection Area :
 Is it less than 1000 ft from wells, springs, or other sources of fresh water extraction? , or ; Is it less than 200 ft from a private domestic water source? (1) YES (20 points) (2) NO (0 points)

Horizontal Distance to Surface Water Body

Less Than 200 Ft (20 points)	<input type="checkbox"/> (1)
200 Ft to 1000 Ft (10 points)	<input checked="" type="checkbox"/> (2)
Greater Than 1000 Ft (0 points)	<input type="checkbox"/> (3)

Name of Surface Water Body BLANCO WASH
 (Surface Water Body : Perennial Rivers, Major Wash, Streams, Creeks, Irrigation Canals, Ditches, Lakes, Ponds)
 Distance to Nearest Ephemeral Stream (1) < 100' (Navajo Pits Only)
 (2) > 100'

TOTAL HAZARD RANKING SCORE: 30 POINTS

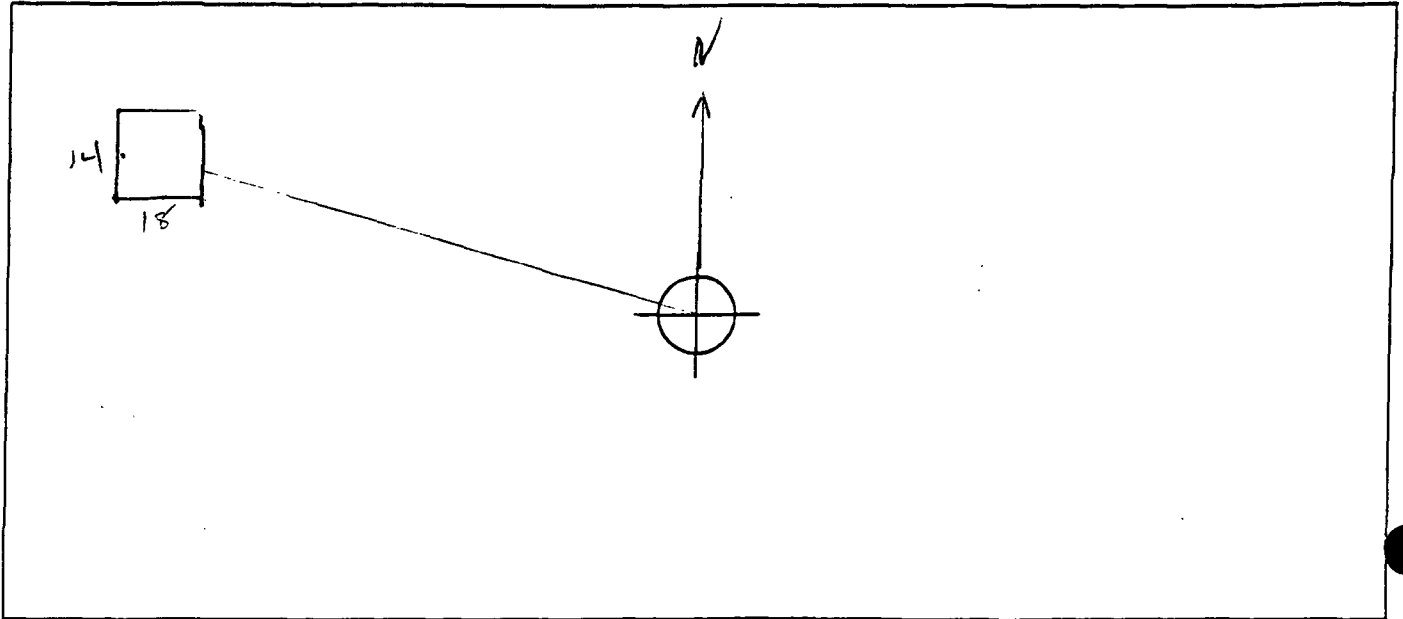
MARKS

Remarks : _____

ORIGINAL PIT LOCATION

Original Pit : a) Degrees from North 295° Footage from Wellhead 105'
b) Length : 16' Width : 14' Depth : 18"

ORIGINAL PIT LOCATION



REMARKS :

Meridian has 3 pits on location groundwater found between 8' - 10', meridian pits include (1) tank over flow (2) separator (3) Blow pit.

REMARKS

Completed By:

Richy Carley
Signature

06-24-96
Date

FIELD PIT REMEDIATION/CLOSURE FORM

GENERAL

Meter: 75155 Location: Ramona Ft AL #1
 Coordinates: Letter: J Section 13 Township: 27 Range: 09
 Or Latitude _____ Longitude _____
 Date Started : 10-3-96 Area: 07 Run: 62

FIELD OBSERVATIONS

Sample Number(s): MK533^{H₂O} MK534^(soil)
 Sample Depth: 12' Feet
 Final PID Reading 154 PPM PID Reading Depth 12' Feet
 Yes No
 Groundwater Encountered (1) (2) Approximate Depth 9' Feet

CLOSURE

Remediation Method :

Excavation (1) Approx. Cubic Yards 432
 Onsite Bioremediation (2)
 Backfill Pit Without Excavation (3)

Soil Disposition:

Envirotech (1) (3) Tierra
 Other Facility (2) Name: _____

Pit Closure Date: 10-3-96 Pit Closed By: Philip ENV.

REMARKS

Remarks : started excavating pit MK7-4-96 Hit Hit ground water
at 9' bottom of pit appeared to clean up at 12' 12'
N-wall 155 PPM S-wall 154 PPM E-wall 158 PPM W-wall 4 PPM
Bottom 5 PPM

Signature of Specialist: Margaret Hillion



EL PASO FIELD SERVICES

FIELD SERVICES LABORATORY

ANALYTICAL REPORT PIT CLOSURE PROJECT

SAMPLE IDENTIFICATION

SAMPLE NUMBER:	Field ID MK534	Lab ID 947925
MTR CODE SITE NAME:	75155	Ramenta ET AL #1
SAMPLE DATE TIME (Hrs):	10/4/96	1015
PROJECT:	Phase I - Navajo	
DATE OF TPH EXT. ANAL.:	10/10/96	10/10/96
DATE OF BTEX EXT. ANAL.:	10/9/96	10/9/96
TYPE DESCRIPTION:	VC	Medium gray & brown

Field Remarks:

RESULTS

PARAMETER	RESULT	UNITS	QUALIFIERS			
			DF	Q	M(g)	V(ml)
BENZENE	<1	MG/KG	2			
TOLUENE	<1	MG/KG	2			
ETHYL BENZENE	<1	MG/KG	2			
TOTAL XYLENES	<3	MG/KG	2			
TOTAL BTEX	<6	MG/KG				
TPH (418.1)	<10	MG/KG			2.40	28
HEADSPACE PID	154	PPM				
PERCENT SOLIDS	86.1	%				

- TPH is by EPA Method 418.1 and BTEX is by EPA Method 8020 -

The "D" qualifier indicates that the analyte calculated is based on a secondary dilution factor.

The Surrogate Recovery was at 94.2 % for this sample All QA/QC was acceptable.

Narrative:

DF = Dilution Factor Used

Approved By: John Lutch

Date: 10-16-96

BTEX SOIL SAMPLE WORKSHEET

File	:	947925	Date Printed	:	10/15/96
Soil Mass (g)	:	4.99	Multiplier (L/g)	:	0.00100
Extraction vol. (mL)	:	10	CAL FACTOR (Analytical)	:	400
Shot Volume (uL)	:	25	CAL FACTOR (Report)	:	0.40080

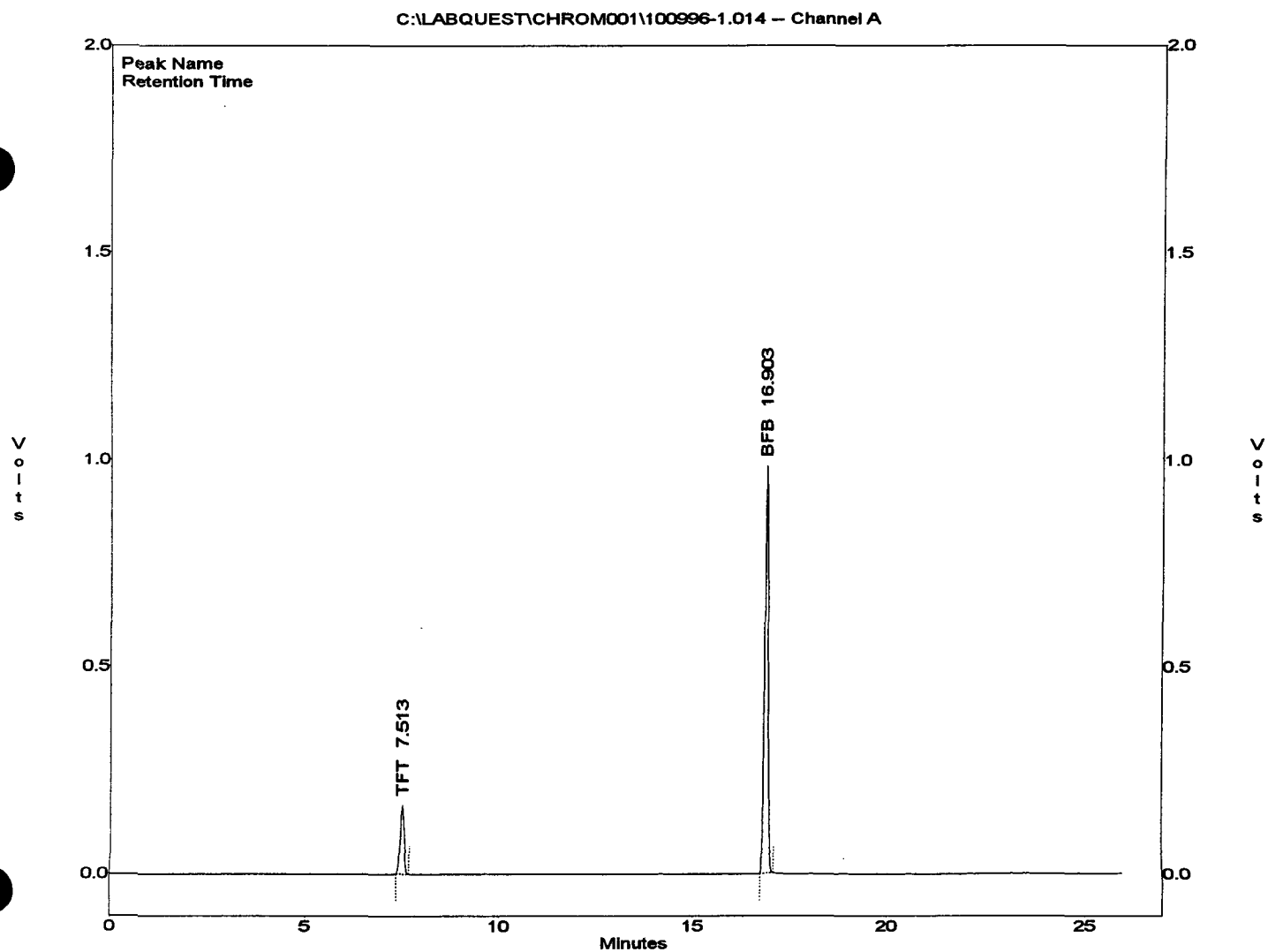
		DILUTION FACTOR:	2	Det. Limit
Benzene (ug/L)	:	0.00	Benzene (mg/Kg):	0.000 1.002
Toluene (ug/L)	:	0.00	Toluene (mg/Kg):	0.000 1.002
Ethylbenzene (ug/L)	:	0.00	Ethylbenzene (mg/Kg):	0.000 1.002
p & m-xylene (ug/L)	:	0.00	p & m-xylene (mg/Kg):	0.000 2.004
o-xylene (ug/L)	:	0.00	o-xylene (mg/Kg):	0.000 1.002
			Total xylenes (mg/Kg):	0.000 3.006
			Total BTEX (mg/Kg):	0.000

**EL PASO NATURAL GAS
EPA METHOD 8020 - BTEX SOILS**

File : C:\LABQUEST\CHROM001\100996-1.014
Method : C:\LABQUEST\METHODS\1-100896.MET
Sample ID : 947925,4.99G,25U
Acquired : Oct 10, 1996 00:11:37
Printed : Oct 10, 1996 00:37:58
User : MARLON

Channel A Results

COMPONENT	RET TIME	AREA	CONC (ug/L)
BENZENE	5.567	0	0.0000
TFT	7.513	1147835	94.4674
TOLUENE	9.677	0	0.0000
ETHYLBENZENE	13.847	0	0.0000
M & P XYLENE	14.230	0	0.0000
O XYLENE	15.367	0	0.0000
BFB	16.903	6473100	94.2138



* Test Method for *
* Oil and Grease and Petroleum Hydrocarbons *
* in Water and Soil *
* *
* Perkin-Elmer Model 1600 FT-IR *
* Analysis Report *

* 96/10/10 11:01

* Sample identification
947925

* Initial mass of sample, g
2.400

* Volume of sample after extraction, ml
28.000

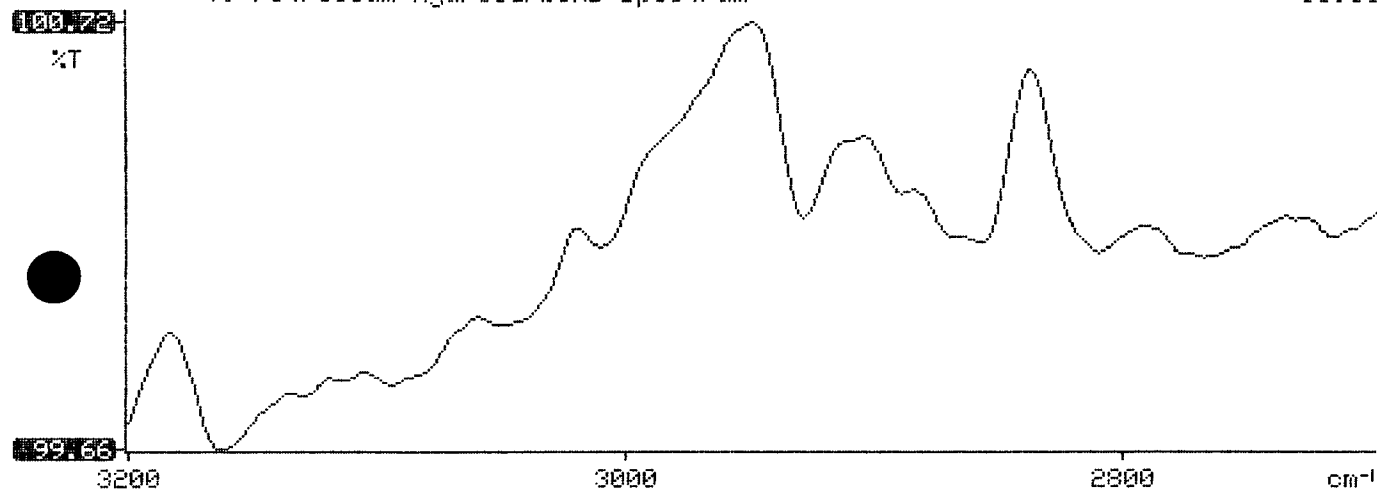
* Petroleum hydrocarbons, ppm
-15.635

* Net absorbance of hydrocarbons (2930 cm⁻¹)
-0.001

*
*
*

Y: Petroleum hydrocarbons spectrum

11:01



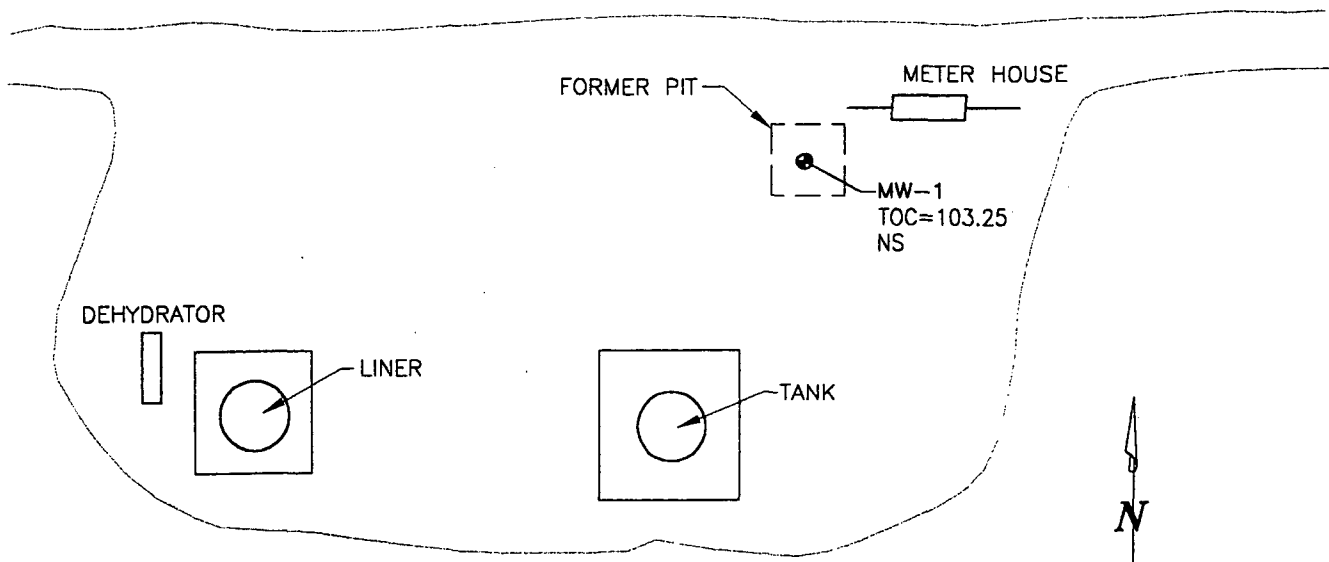
● MW-3
 TOC=100.62
 SITE GWEL=91.88

	MW-2	MW-3
B	<0.5	<0.5
T	<0.5	<0.5
E	<0.5	<0.5
X	<0.5	<0.5

● MW-2
 TOC=99.06
 SITE GWEL=91.93

WELLHEAD

BLANCO WASH



LEGEND

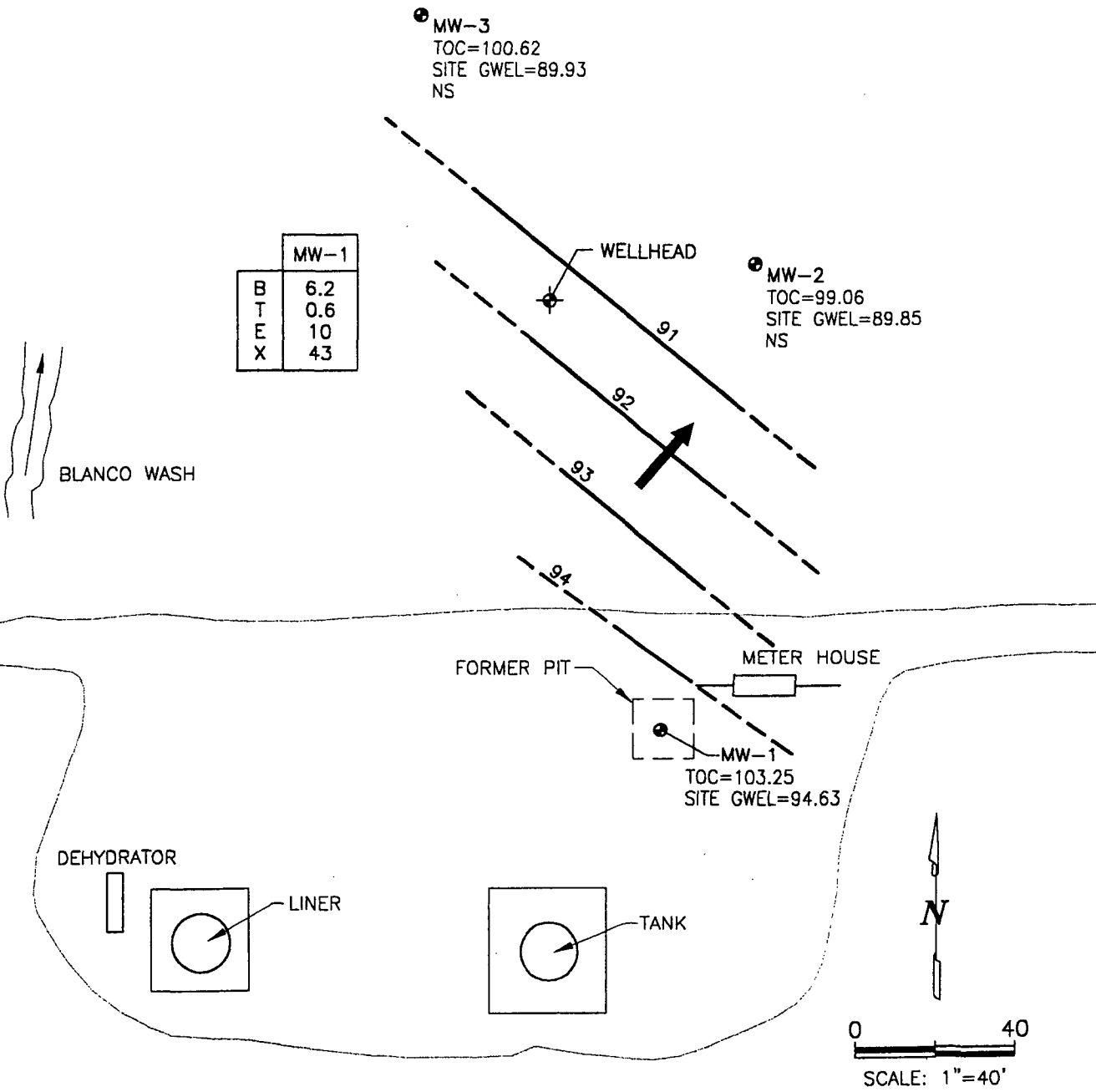
- MW-1 Approximate Monitoring Well Location and Number
- B Benzene ($\mu\text{g/L}$)
- T Toluene ($\mu\text{g/L}$)
- E Ethylbenzene ($\mu\text{g/L}$)
- X Total Xylenes ($\mu\text{g/L}$)
- NS Not Sampled
- GWEL Groundwater Elevation (FT Above Mean Sea Level Unless Noted Otherwise)
- TOC Top of Casing

RAMENTA ET AL #1, METER 75155
 JANUARY, 2001

GROUNDWATER SITES
 EL PASO FIELD SERVICES

FIGURE 1

ramenta_01.dwg



LEGEND

- MW-1 Approximate Monitoring Well Location and Number
- B Benzene ($\mu\text{g/L}$)
- T Toluene ($\mu\text{g/L}$)
- E Ethylbenzene ($\mu\text{g/L}$)
- X Total Xylenes ($\mu\text{g/L}$)
- NS Not Sampled
- 91 Potentiometric Surface (Approximate & Assumed Where Dashed)
- Direction of Groundwater Flow (Estimated)
- GWEL Groundwater Elevation (FT Above Mean Sea Level Unless Noted Otherwise)
- TOC Top of Casing

RAMENTA ET AL #1, METER 75155
MARCH, 2001

GROUNDWATER SITES
EL PASO FIELD SERVICES

FIGURE 2

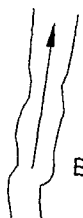
ramenta_01.dwg

● MW-3
 TOC=100.62
 NS

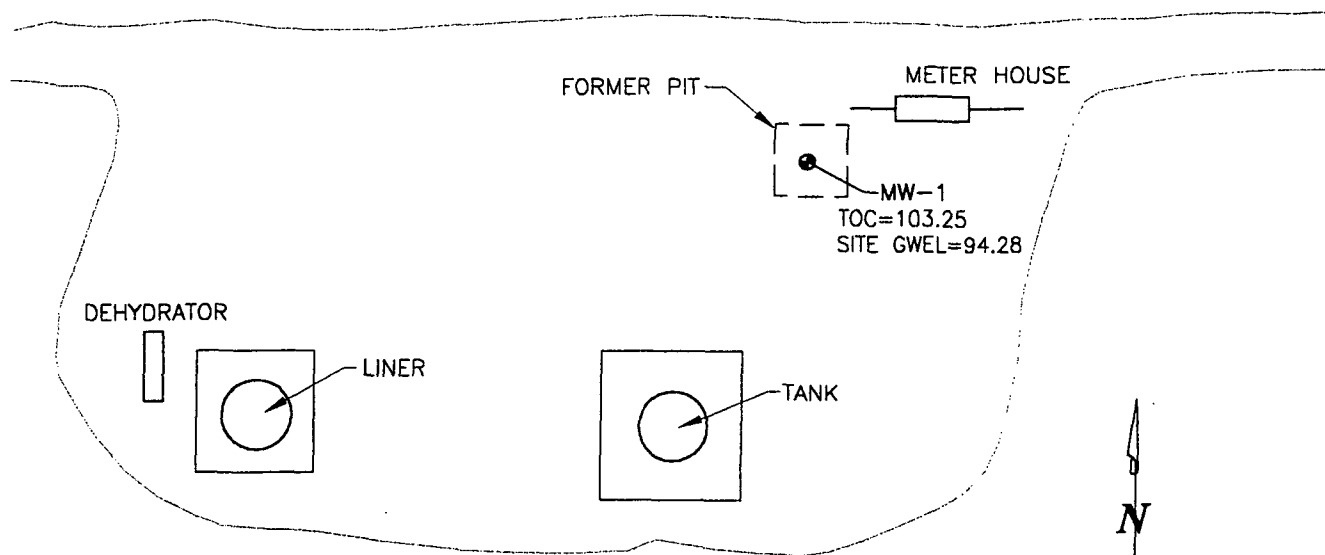
	MW-1
B	7.8
T	0.8
E	11
X	54

WELLHEAD

● MW-2
 TOC=99.06
 NS



BLANCO WASH



FORMER PIT

METER HOUSE

MW-1
 TOC=103.25
 SITE GWEL=94.28

DEHYDRATOR

LINER

TANK



0 40
 SCALE: 1"=40'

LEGEND

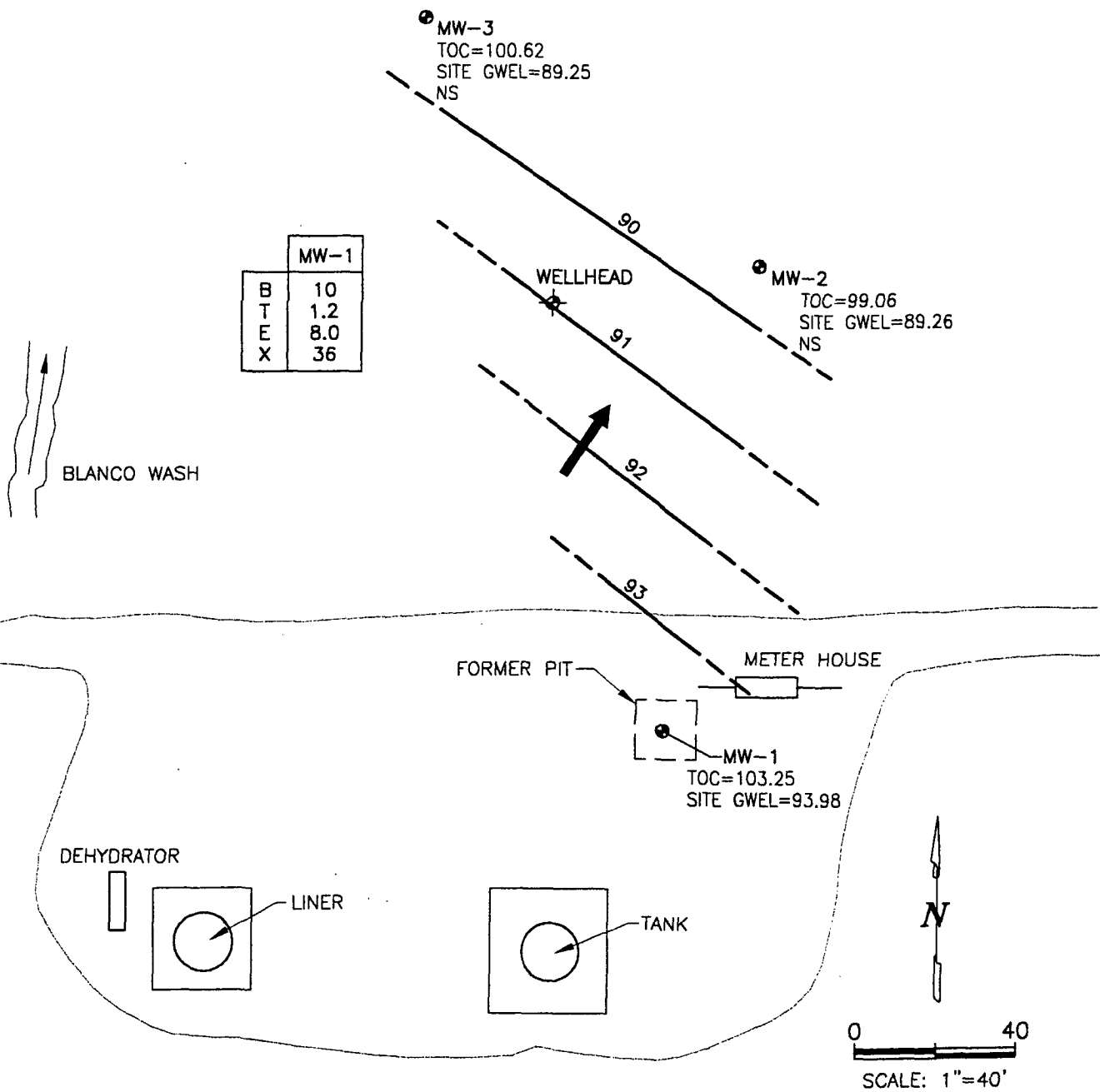
- MW-1 Approximate Monitoring Well Location and Number
- B Benzene ($\mu\text{g/L}$)
- T Toluene ($\mu\text{g/L}$)
- E Ethylbenzene ($\mu\text{g/L}$)
- X Total Xylenes ($\mu\text{g/L}$)
- NS Not Sampled
- GWEL Groundwater Elevation (FT Above Mean Sea Level Unless Noted Otherwise)
- TOC Top of Casing

ramenta_01.dwg

RAMENTA ET AL #1, METER 75155
 JUNE, 2001

GROUNDWATER SITES
 EL PASO FIELD SERVICES

FIGURE 3



	MW-1
B	10
T	1.2
E	8.0
X	36

LEGEND

- MW-1 Approximate Monitoring Well Location and Number
- B Benzene ($\mu\text{g/L}$)
- T Toluene ($\mu\text{g/L}$)
- E Ethylbenzene ($\mu\text{g/L}$)
- X Total Xylenes ($\mu\text{g/L}$)
- NS Not Sampled
- 91 — Potentiometric Surface (Approximate & Assumed Where Dashed)
- Direction of Groundwater Flow (Estimated)
- GWEL Groundwater Elevation (FT Above Mean Sea Level Unless Noted Otherwise)
- TOC Top of Casing

RAMENTA ET AL #1, METER 75155
SEPTEMBER, 2001

GROUNDWATER SITES
EL PASO FIELD SERVICES

FIGURE 4

ramenta_01.dwg



BLANCO WASH

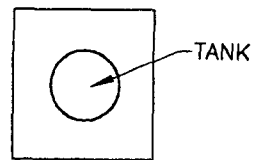
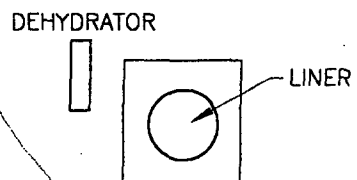
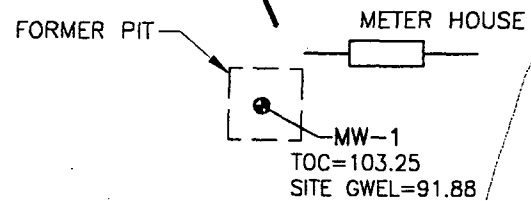
	MW-1	MW-2	MW-3
B	6.8	<0.5	<0.5
T	5	<0.5	<0.5
E	5	<0.5	<0.5
X	5	<0.5	<0.5

MW-3
TOC=100.62
SITE GWEL=91.32



WELLHEAD

MW-2
TOC=99.06
SITE GWEL=89.19



0 40
SCALE: 1"=40'

LEGEND

- MW-1 Approximate Monitoring Well Location and Number
- B Benzene (µg/L)
- T Toluene (µg/L)
- E Ethylbenzene (µg/L)
- X Total Xylenes (µg/L)
- NS Not Sampled
- 90.5 Potentiometric Surface (Approximate & Assumed Where Dashed)
- Direction of Groundwater Flow (Estimated)
- GWEL Groundwater Elevation (FT Above Mean Sea Level Unless Noted Otherwise)
- TOC Top of Casing

RAMENTA ET AL #1, METER 75155
DECEMBER, 2001.

GROUNDWATER SITES
EL PASO FIELD SERVICES

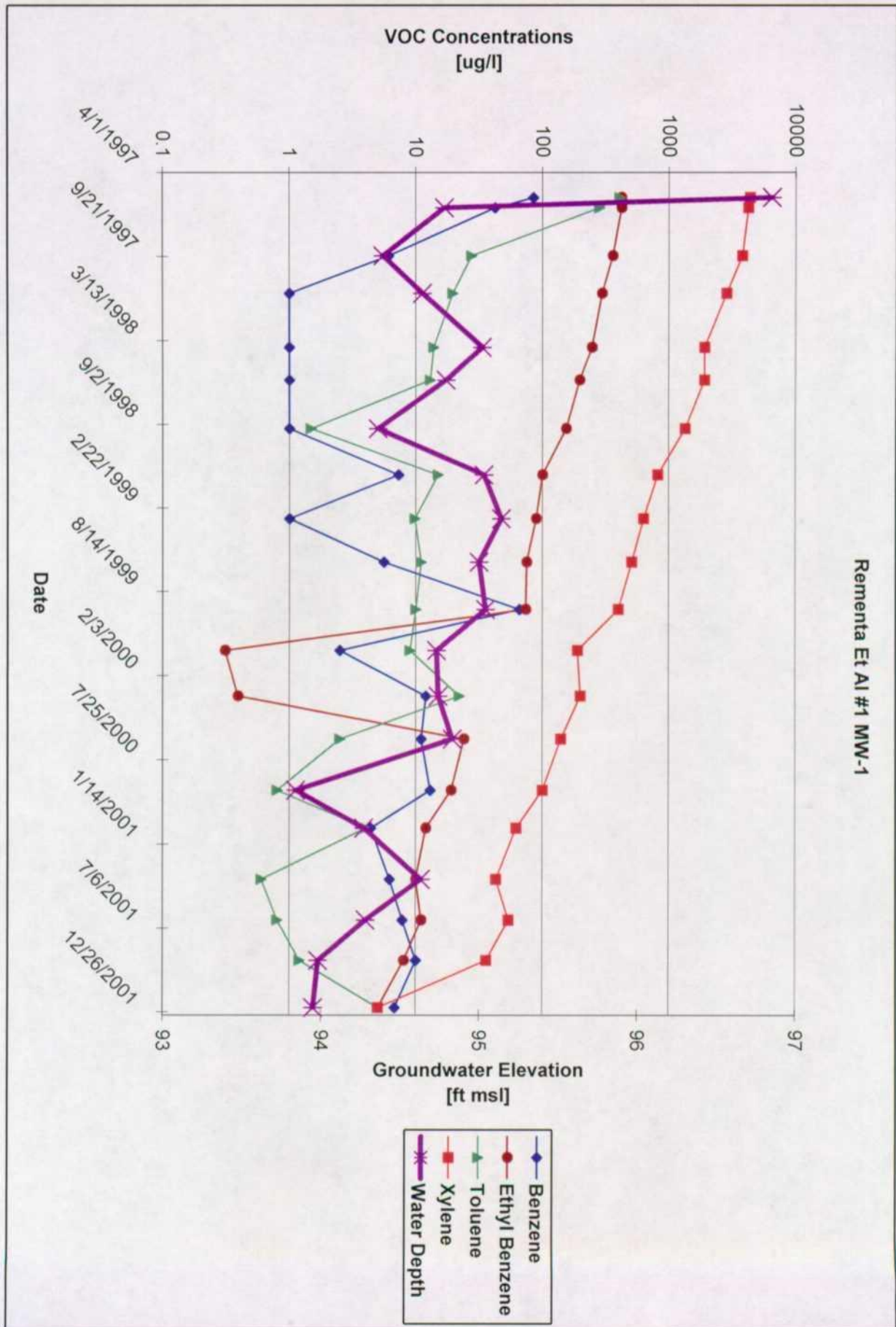
FIGURE 5

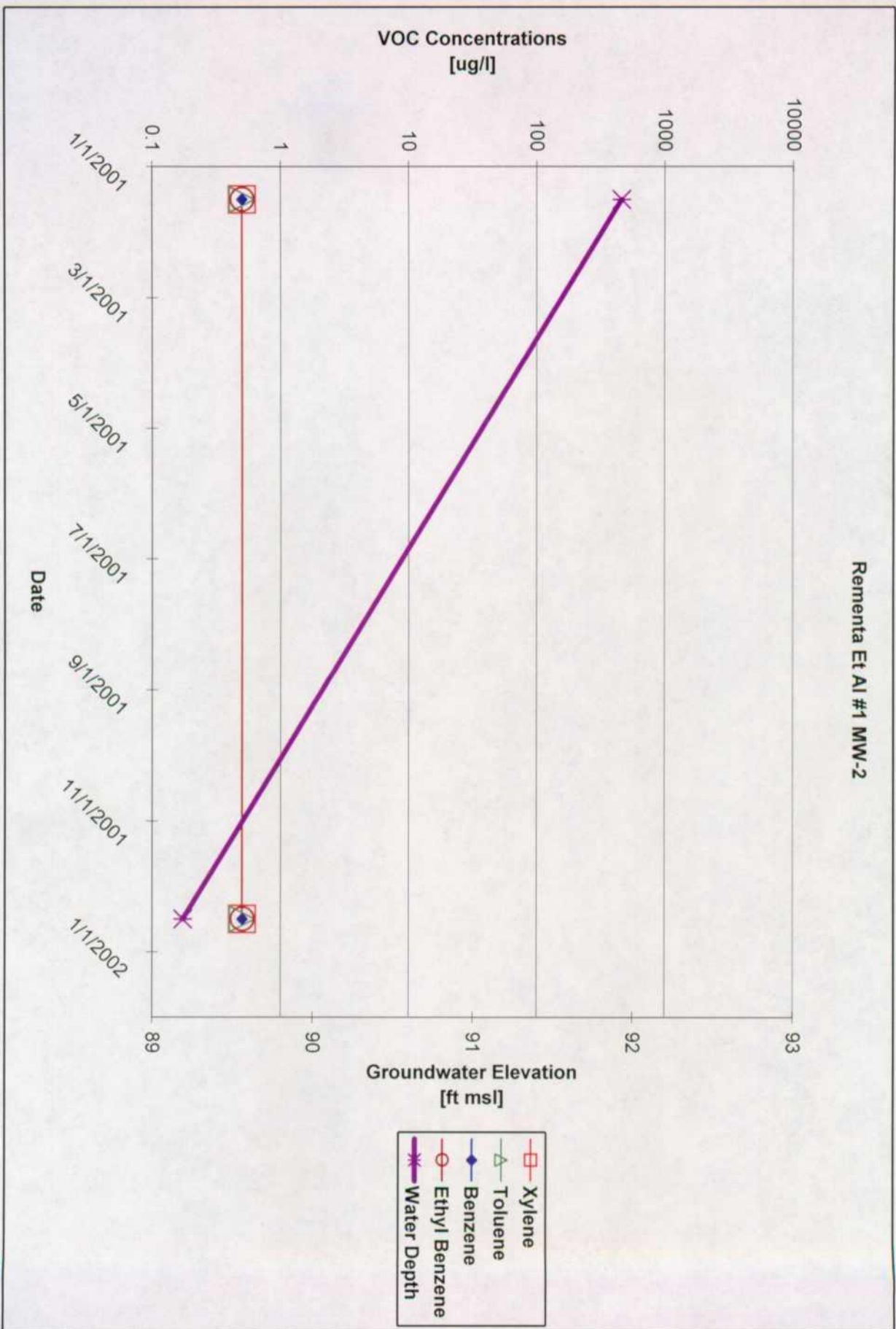
ramenta_01.dwg

Table 1 BTEX
Rementa ET AL #1

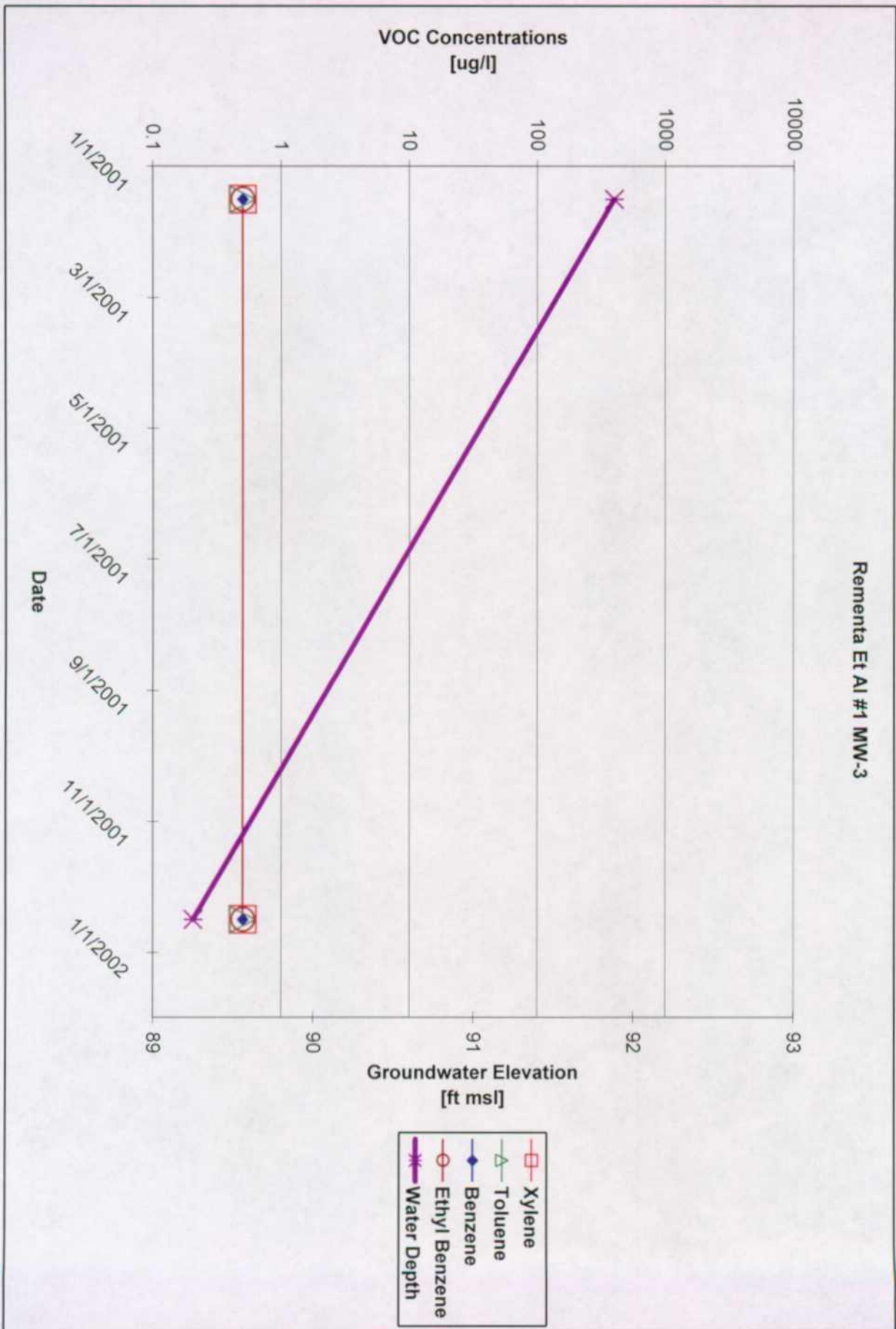
Sample #	Meter Line #	Site Name	Sample Date	MW#	Benzene (µg/l)	Ethyl Benzene (µg/l)	Toluene (µg/l)	Total Xylenes (µg/l)	Depth to Water (Feet)	Groundwater Elevation (feet)
REM0301	75155	Ramenta et al #1	3/27/2001	1	6.2	10	0.6	43	8.62	94.63
REM0106	75155	Ramenta et al #1	6/19/2001	1	7.8	11	0.8	54	8.97	94.28
REM0109	75155	Ramenta et al #1	9/10/2001	1	10	8.0	1.2	36	9.27	93.98
REM0112	75155	Ramenta et al #1	12/17/2001	1	6.8	5.0	5.0	5.0	9.30	93.95
REM0101	75155	Ramenta et al #1	1/29/2001	2	< 0.5	< 0.5	< 0.5	< 0.5	7.13	91.93
REM0112	75155	Ramenta et al #1	12/17/2001	2	< 0.5	< 0.5	< 0.5	< 0.5	9.87	89.19
REM0101	75155	Ramenta et al #1	1/29/2001	3	< 0.5	< 0.5	< 0.5	< 0.5	8.74	91.88
REM0112	75155	Ramenta et al #1	12/17/2001	3	< 0.5	< 0.5	< 0.5	< 0.5	11.37	89.25

Rementa Et Al #1 MW-1





Rementa Et Al #1 MW-3



ATTACHMENT 1

2001 GROUNDWATER ANALYTICAL

PINNACLE
LABORATORIES

2709-D Pan American Freeway NE
Albuquerque, New Mexico 87107
Phone (505) 344-3777
Fax (505) 344-4413

Pinnacle Lab ID number **112085**
~~November 09, 2001~~
December 2002

AMEC EARTH & ENVIRONMENTAL
2060 AFTON PLACE
FARMINGTON, NM 87401

EL PASO FIELD SERVICES
614 RIELLY STREET
FARMINGTON, NM 87401

Project Name EPFS GW PROJECT REMENT A ET.AL
Project Number 1517000121

Attention: LISA WINN/SCOTT POPE

On 12/21/01 Pinnacle Laboratories, Inc., (ADHS License No. AZ0592 pending), received a request to analyze **aqueous** samples. The samples were analyzed with EPA methodology or equivalent methods. The results of these analyses and the quality control data, which follow each set of analyses, are enclosed.

If you have any questions or comments, please do not hesitate to contact us at (505)344-3777.



H. Mitchell Rubenstein, Ph. D.
General Manager

MR: jt

Enclosure

MW1
MW2
MW3

PINNACLE
LABORATORIES

2709-D Pan American Freeway NE
Albuquerque, New Mexico 87107
Phone (505) 344-3777
Fax (505) 344-4413

CLIENT : AMEC EARTH & ENVIRONMENTAL PINNACLE ID : 112085
PROJECT # : 1517000121 DATE RECEIVED : 12/21/01
PROJECT NAME : EPFS GW PROJECT REMENT A ET.AL REPORT DATE : 01/07/02

PINNACLE ID #	CLIENT DESCRIPTION	MATRIX	DATE COLLECTED
112085 - 01	REM-0112-MW1	AQUEOUS	12/17/01
112085 - 02	REM-0112-MW2	AQUEOUS	12/17/01
112085 - 03	REM-0112-MW3	AQUEOUS	12/17/01

PINNACLE
LABORATORIES

2709-D Pan American Freeway NE
Albuquerque, New Mexico 87107
Phone (505) 344-3777
Fax (505) 344-4413

GAS CHROMATOGRAPHY RESULTS

TEST : EPA 8021 MODIFIED
CLIENT : AMEC EARTH & ENVIRONMENTAL
PROJECT # : 1517000121
PROJECT NAME : EPFS GW PROJECT REMENT A ET.AL

PINNACLE I.D.: 112085

SAMPLE ID. #	CLIENT I.D.	MATRIX	DATE SAMPLED	DATE EXTRACTED	DATE ANALYZED	DIL. FACTOR
01	REM-0112-MW1	AQUEOUS	12/17/02	NA	12/27/01	10
02	REM-0112-MW2	AQUEOUS	12/17/02	NA	12/28/01	1
03	REM-0112-MW3	AQUEOUS	12/17/02	NA	12/28/01	1

PARAMETER	DET. LIMIT	UNITS	REM-0112-MW1	REM-0112-MW2	REM-0112-MW3
BENZENE	0.5	UG/L	< 6.8	< 0.5	< 0.5
TOLUENE	0.5	UG/L	< 5.0	< 0.5	< 0.5
ETHYLBENZENE	0.5	UG/L	< 5.0	< 0.5	< 0.5
TOTAL XYLENES	0.5	UG/L	< 5.0	< 0.5	< 0.5

SURROGATE:
BROMOFLUOROBENZENE (%) 108 110 105
SURROGATE LIMITS (80 - 120)

CHEMIST NOTES:
N/A

PINNACLE
LABORATORIES

2709-D Pan American Freeway NE
Albuquerque, New Mexico 87107
Phone (505) 344-3777
Fax (505) 344-4413

GAS CHROMATOGRAPHY RESULTS
REAGENT BLANK

TEST	: EPA 8021 MODIFIED	PINNACLE I.D.	: 112085
BLANK I. D.	: 122701	DATE EXTRACTED	: N/A
CLIENT	: AMEC EARTH & ENVIRONMENTAL	DATE ANALYZED	: 12/27/01
PROJECT #	: 1517000121	SAMPLE MATRIX	: AQUEOUS
PROJECT NAME	: EPFS GW PROJECT REMENT A ET.AL		

PARAMETER	UNITS	
BENZENE	UG/L	<0.5
TOLUENE	UG/L	<0.5
ETHYLBENZENE	UG/L	<0.5
TOTAL XYLENES	UG/L	<0.5

SURROGATE:
BROMOFLUOROBENZENE (%) 108
SURROGATE LIMITS: (80 - 120)
COMMENTS NOTES:
N/A

PINNACLE
LABORATORIES

2709-D Pan American Freeway NE
Albuquerque, New Mexico 87107
Phone (505) 344-3777
Fax (505) 344-4413

GAS CHROMATOGRAPHY RESULTS
REAGENT BLANK

TEST : EPA 8021 MODIFIED PINNACLE I.D. : 112085
BLANK I. D. : 122801 DATE EXTRACTED : N/A
CLIENT : AMEC EARTH & ENVIRONMENTAL DATE ANALYZED : 12/28/01
PROJECT # : 1517000121 SAMPLE MATRIX : AQUEOUS
PROJECT NAME : EPFS GW PROJECT REMENT A ET.AL

PARAMETER	UNITS	
BENZENE	UG/L	<0.5
TOLUENE	UG/L	<0.5
ETHYLBENZENE	UG/L	<0.5
TOTAL XYLENES	UG/L	<0.5

SURROGATE:
BROMOFLUOROBENZENE (%) 106
SURROGATE LIMITS: (80 - 120)
COMMENTS NOTES:
N/A

PINNACLE
LABORATORIES

2709-D Pan American Freeway NE
Albuquerque, New Mexico 87107
Phone (505) 344-3777
Fax (505) 344-4413

GAS CHROMATOGRAPHY QUALITY CONTROL
MSMSD

TEST	: EPA 8021 MODIFIED	PINNACLE I.D.	: 112085
MSMSD #	: 122701	DATE EXTRACTED	: N/A
CLIENT	: AMEC EARTH & ENVIRONMENTAL	DATE ANALYZED	: 12/27/01
PROJECT #	: 1517000121	SAMPLE MATRIX	: AQUEOUS
PROJECT NAME	: EPFS GW PROJECT REMENT A ET.AL	UNITS	: UG/L

PARAMETER	SAMPLE RESULT	CONC SPIKE	SPIKED SAMPLE	% REC	DUP SPIKE	DUP % REC	RPD	REC LIMITS	RPD LIMITS
BENZENE	<0.5	20	21.8	109	21.7	108	1	(80 - 120)	20
TOLUENE	<0.5	20	20.9	105	20.9	105	0	(80 - 120)	20
ETHYLBENZENE	<0.5	20	20.5	103	20.5	102	0	(80 - 120)	20
TOTAL XYLENES	<0.5	60	64.2	107	63.6	106	1	(80 - 120)	20

CHEMIST NOTES:
N/A

$$\% \text{ Recovery} = \frac{(\text{Spike Sample Result} - \text{Sample Result})}{\text{Spike Concentration}} \times 100$$

$$\text{RPD (Relative Percent Difference)} = \frac{(\text{Sample Result} - \text{Duplicate Result})}{\text{Average Result}} \times 100$$



Pinnacle Laboratories Inc.

CHAIN OF CUSTODY

DATE: 12-20-01 PAGE: 1 OF 1

PLU Accession # 112085

PROJECT MANAGER: List Winn
 COMPANY: AMEC
 ADDRESS: 2060 AFTON PLASE
FARMINGTON N.M. 87401
 PHONE: (505) 327-7929
 FAX: (505) 326-5721
 BILL TO: SCOTT POORE
 COMPANY: EL PASO Field Services
 ADDRESS: 604 REILLY AVE
FARMINGTON N.M. 87401

SAMPLE ID	DATE	TIME	ANALYSIS
REM-012-MW 1	12/17/01	1107	Had
REM-012-MW 2	12/17/01	1148	Had
REM-012-MW 3	12/17/01	1227	Had

ANALYSIS REQUEST	Metals:	RCRA Metals (8)	Target Analyte List Metals (23)	Priority Pollutant Metals (13)	General Chemistry:	Polynuclear Aromatics (610/8310/8270-SIMS)	Base/Neutral/Acid Compounds GC/MS (625/8270)	Herbicides (615/8151)	Pesticides /PCB (608/8081/8082)	8260 (Landfill) Volatile Organics	8260 (CUST) Volatile Organics	8260 (Full) Volatile Organics	8260 (TCL) Volatile Organics	504.1 EDB / DBCP	8021 (CUST)	8021 (HALO)	8021 (EDX)	8021 (TCL)	8021 (BTEX) / 8015 (Gasoline) MTBE	(M8015) Gas/Purge & Trap	(MOD.8015) Diesel/Direct Inject	Petroleum Hydrocarbons (418.1) TRPH	

PROJECT INFORMATION:
 PROJ. NO.: 517000121
 PROJ. NAME: SPS G.W. Project
 P.O. NO.:
 SHIPPED VIA: Greyhound

APPROPRIATE CERTIFICATIONS REQUIRED FOR RUSH PROJECTS:
 (RUSH) 24hr 48hr 72hr 1 WEEK (NORMAL)
 CERTIFICATION REQUIRED: NM SDWA OTHER
 METHANOL PRESERVATION

COMMENTS: FIXED FEE
Rement & ET. AL.
meter # (5155)

RELINQUISHED BY:
 Signature: [Signature] Time: 1100
 Printed Name: Chris M. [Name] Date: 12-20-01
 Company: AMEC
 See reverse side (for this field)

RECEIVED BY (LAB):
 Signature: [Signature] Time: 1100
 Printed Name: [Name] Date: 12-20-01
 Company: [Company]

- Development
 Purging

WELL DEVELOPMENT AND PURGING DATA FORM



Well Number MW 1

Page 1 of 1

Project Name EPES GW Project

Project Manager List Winn

Project No. 1517000121

Client Company El Paso Field Services

Site Name Reventon ETAL (25155) Site Address Rural San Juan Co

Development Criteria

- 3 to 5 Casing Volumes of Water Removal
 Stabilization of Indicator Parameters
 Other _____

Methods of Development

- Pump**
 Centrifugal
 Submersible
 Peristaltic
 Other _____
- Boiler**
 Bottom Valve
 Double Check Valve
 Stainless-steel Kemmerer

Water Volume Calculation

Initial Depth of Well (feet) 80.08
 Initial Depth to Water (feet) 9.30
 Height of Water Column in Well (feet) 10.79
 Diameter (inches): Well 4" Gravel Pack _____

Item	Water Volume in Well (Cubic Feet)	Gallons	Gallons to be Removed
Well Casing	<u>10.79</u>	<u>703</u>	<u>3</u>
Gravel Pack			
Drilling Fluids			
Total			<u>21.09</u>

- ### Instruments
- pH Meter Serial No. (if applicable) YSE 63
 DO Monitor
 Conductivity Meter YSE 63
 Temperature Meter YSE 63
 Other _____
- Water Disposal KUTZ Separator Blowfield NM.

Water Removal Data

Date	Time	Development Method	Removal Rate (gal/min)	Intake Depth (feet)	Ending Water Depth (feet)	Water Volume Removed (gallons)		Product Volume Removed (gallons)		Temperature (°C)	pH	Conductivity (mmhos/cm)	Dissolved Oxygen (mg/l)	Comments
						Incremental	Cumulative	Incremental	Cumulative					
12-17-01	1036	X				4.25	4.25			13.7	8.34	961		Clear, KOT 70% 85 obs
	1040	X				4.25	8.5			14.5	8.51	902		"
	1047	X				4.25	12.75			14.7	8.59	903		"
	1051	X				4.25	17			14.9	8.58	924		"
	1057	X			15.41	4.25	21.25			14.8	8.71	933	3.20	no change

Comments Sampled for BTEX 1107

Developer's Signature(s) [Signature] Date 12-17-01

Reviewer [Signature] Date 12/24/01



WELL DEVELOPMENT AND PURGING DATA FORM

- Development
- Purging

Well Number MW 2

Page 1 of 1

Project Name EPFS Gw project

Project Manager hist winn

Project No. 151700121

Client Company Elk Pass Field Services

Site Name Remont A ETAL #1 (75155) site Address Rural Sear Farm rd.

Development Criteria

- 0 to 5 Casing Volumes of Water Removal
- Stabilization of Indicator Parameters
- Other _____

Water Volume Calculation

Initial Depth of Well (feet) 15.37
 Initial Depth to Water (feet) 9.87
 Height of Water Column in Well (feet) 5.5
 Diameter (inches): Well 2" Gravel Pack _____

Instruments

- pH Meter
- DO Monitor
- Conductivity Meter
- Temperature Meter
- Other _____

Serial No. (if applicable) YST63

Methods of Development

- Pump
 - Centrifugal
 - Submersible
 - Peristaltic
 - Other _____
- Boiler
 - Bottom Valve
 - Double Check Valve
 - Stainless-steel Kemmerer

Item	Water Volume in Well	Gallons Removed
Well Casing	5.5	0.89 X 3
Gravel Pack		2.67
Drilling Fluids		
Total		2.67

Water Disposal

KITZ separator for Bloomfield MW.

Water Removal Data

Date	Time	Development Method	Removal Rate (gal/min)	Intake Depth (feet)	Ending Water Depth (feet)	Water Volume Removed (gallons)		Product Volume Removed (gallons)		Temperature (°C)	pH	Conductivity (mmhos/cm)	Dissolved Oxygen (mg/l)	Comments
						Incremental	Cumulative	Incremental	Cumulative					
12-17-01	1129	X				.75	.75			13.8	7.94	1055		CO ₂ 15.1 no change
	1132	X				.75	1.5			14.4	7.91	827		
	1134	X				.75	2.25			13.4	7.94	3261		
	1136	X				.75	3			14.5	7.98	1094		
	1139	X			1022	.75	3.75			14.5	7.99	1058	4.17	no change

Comments Sampled for BTEX 1/49

Developer Signature(s) [Signature]

Date 12/17/01

Reviewer [Signature]

Date 12/24/01



WELL DEVELOPMENT AND PURGING DATA FORM

Development
 Purging

Well Number MW 3

Page 1 of 1

Project Name EPFS Gw Project

Project Manager Lisa Wilson

Project No 1512000121

Client Company El Paso Field Services

Site Name Element A ET AL #1 (05155)

Site Address Rural San Juan Co.

Development Criteria

3 to 5 Casing Volumes of Water Removal
 Stabilization of Indicator Parameters
 Other _____

Water Volume Calculation

Initial Depth of Well (feet) 20.32
Initial Depth to Water (feet) 11.37
Height of Water Column in Well (feet) 9.95
Diameter (inches): Well 2 Gravel Pack _____

Instruments

pH Meter YSI 63

DO Monitor

Conductivity Meter YSI 63

Temperature Meter YSI 63

Other _____

Water Disposal

Water Separator Blawfield NM

Methods of Development

Pump
 Centrifugal
 Submersible
 Peristaltic
 Bottom Valve
 Double Check Valve
 Stainless-steel Kemmerer
 Other _____

Item	Water Volume in Well		Gallons to be Removed
	Cubic Feet	Gallons	
Well Casing	8.95	146 X 3	4.38
Gravel Pack			
Drilling Fluids			
Total			4.38

Water Removal Data

Date	Time	Development Method Pump/Bailer	Removal Rate (gal/min)	Intake Depth (feet)	Ending Water Depth (feet)	Water Volume Removed (gallons)		Product Volume Removed (gallons)		Temperature (°C)	pH	Conductivity (mmhos/cm)	Dissolved Oxygen (mg/l)	Comments
						Incremental	Cumulative	Incremental	Cumulative					
12-11-01	1205	X				1	1			14	7.69	751		Clarity 5.5 RT Brown
	1207	X				1	2			14.6	7.65	766		"
	1211	X				1	3			14.3	7.66	754		"
	1214	X				1	4			14.5	7.65	766		"
	1218	X			11.52	1	5			14.5	7.20	756	0.61	no change

Comments Sampled for BTEX 1227

Developer Signature(s) [Signature]

Date 12-12-01

Reviewer Signature [Signature] Date 12/24/01

PLEASE FILL THIS FORM IN COMPLETELY.

SHADED AREAS ARE FOR LAB USE ONLY.

PROJECT MANAGER: Lisa Winn COMPANY: AMEC ADDRESS: 2060 AFTON Place Farmington NM 87401 PHONE: (505) 327-7929 FAX: (505) 326-5721 BILL TO: SCOTT POORE COMPANY: El Paso Field Services ADDRESS: 601 Reilly Ave Farmington NM 87401		PROJECT INFORMATION PROJ. NO.: 517000/21 PROJ. NAME: GOLF Project PO. NO.: SHIPPED VIA: FedEx SAMPLE RECEIPT NO. CONTAINERS: CUSTODY SEALS: V/V/N/A RECEIVED INTACT: BLUE ICE:		PRIOR AUTHORIZATION IS REQUIRED FOR RUSH PROJECTS (RUSH) <input type="checkbox"/> 24hr <input type="checkbox"/> 48hr <input type="checkbox"/> 72hr <input type="checkbox"/> 1 WEEK CERTIFICATION REQUIRED: <input type="checkbox"/> NM <input type="checkbox"/> SPWA <input type="checkbox"/> OTHER METHANOL PRESENTATION <input type="checkbox"/> COMMENTS: FIXED FEE Rement & ET AL Meter # (05155)		REINQUISHED BY 1 Signature: [Signature] Printed Name: [Name] Date: 12-20-01 Company: [Company]		REINQUISHED BY 2 Signature: Printed Name: Date: Company:	
SAMPLE ID Dem-012-MW 1 REM-012-MW 2 REM-012-MW 3		DATE 12/20/01 12/17/01 12/17/01		TIME 11:02 11:48 11:27		MATRIX H ₂ O H ₂ O H ₂ O		ANALYSIS REQUEST Petroleum Hydrocarbons (418.1) TRPH (MOD.8015) Diesel/Direct Inject (M8015) Gas/Purge & Trap 8021 (BTEX) 8015 (Gasoline) MTBE 8021 (BTEX) <input type="checkbox"/> MTBE <input type="checkbox"/> TMB <input type="checkbox"/> PCE 8021 (TCL) 8021 (EDX) 8021 (HALO) 8021 (CUST) 504.1 EDB <input type="checkbox"/> / DBCP <input type="checkbox"/> 8260 (TCL) Volatile Organics 8260 (Full) Volatile Organics 8260 (CUST) Volatile Organics 8260 (Landfill) Volatile Organics Pesticides /PCB (608/8081/8082) Herbicides (615/8151) Base/Neutral/Acid Compounds GC/MS (625/8270) Polynuclear Aromatics (610/8310/8270-SIMS) General Chemistry: Priority Pollutant Metals (13) Target Analyte List Metals (23) RCRA Metals (8) RCRA Metals by TCLP (Method 1311) Metals: NUMBER OF CONTAINERS	

PINNACLE
LABORATORIES

2709-D Pan American Freeway NE
Albuquerque, New Mexico 87107
Phone (505) 344-3777
Fax (505) 344-4413

Pinnacle Lab ID number 109048
September 19, 2001

GOLDEN ENVIRONMENTAL MNGT.
906 SAN JUAN BLVD.
FARMINGTON, NM 87401

EL PASO FIELD SERVICES
614 RIELLY STREET
FARMINGTON, NM 87401

Project Name EPFS REMEDIATION PROJECT
Project Number 6169

Remanta

Attention: LISA WINN/SCOTT POPE

On 09/13/01 Pinnacle Laboratories, Inc., (ADHS License No. AZ0592 pending), received a request to analyze **aqueous** samples. The samples were analyzed with EPA methodology or equivalent methods. The results of these analyses and the quality control data, which follow each set of analyses, are enclosed.

If you have any questions or comments, please do not hesitate to contact us at (505)344-3777.



H. Mitchell Rubenstein, Ph. D.
General Manager

MR: jt

Enclosure

PINNACLE
LABORATORIES

2709-D Pan American Freeway NE
Albuquerque, New Mexico 87107
Phone (505) 344-3777
Fax (505) 344-4413

CLIENT	: GOLDEN ENVIRONMENTAL MNGT.	PINNACLE ID	: 109048
PROJECT #	: 6169	DATE RECEIVED	: 09/13/01
PROJECT NAME	: EPFS REMEDIATION PROJECT	REPORT DATE	: 09/19/01
PINNACLE		DATE	
ID #	CLIENT DESCRIPTION	MATRIX	COLLECTED
109048 - 01	REM-0109-MW1	AQUEOUS	09/10/01

PINNACLE
LABORATORIES

2709-D Pan American Freeway NE
Albuquerque, New Mexico 87107
Phone (505) 344-3777
Fax (505) 344-4413

GAS CHROMATOGRAPHY RESULTS

TEST : EPA 8021 MODIFIED
CLIENT : GOLDEN ENVIRONMENTAL MNGT. PINNACLE I.D.: 109048
PROJECT # : 6169
PROJECT NAME : EPFS REMEDIATION PROJECT

SAMPLE ID. #	CLIENT I.D.	MATRIX	DATE SAMPLED	DATE EXTRACTED	DATE ANALYZED	DIL. FACTOR
01	REM-0109-MW1	AQUEOUS	09/10/01	NA	09/14/01	1
PARAMETER	DET. LIMIT	UNITS	REM-0109-MW1			
BENZENE	0.5	UG/L	10			
TOLUENE	0.5	UG/L	1.2			
ETHYLBENZENE	0.5	UG/L	8.0			
TOTAL XYLENES	0.5	UG/L	36			

SURROGATE:

MONOFLUOROBENZENE (%) 123**
SURROGATE LIMITS (80 - 120)

CHEMIST NOTES:

**Surrogate failure due to matrix interference, confirmed by reanalysis.

PINNACLE
LABORATORIES

2709-D Pan American Freeway NE
Albuquerque, New Mexico 87107
Phone (505) 344-3777
Fax (505) 344-4413

GAS CHROMATOGRAPHY RESULTS
REAGENT BLANK

TEST : EPA 8021 MODIFIED PINNACLE I.D. : 109048
BLANK I. D. : 091401 DATE EXTRACTED : NA
CLIENT : GOLDEN ENVIRONMENTAL MNGT. DATE ANALYZED : 09/14/01
PROJECT # : 6169 SAMPLE MATRIX : AQUEOUS
PROJECT NAME : EPFS REMEDIATION PROJECT

PARAMETER	UNITS	
BENZENE	UG/L	<0.5
TOLUENE	UG/L	<0.5
ETHYLBENZENE	UG/L	<0.5
TOTAL XYLENES	UG/L	<0.5

SURROGATE:
BROMOFLUOROBENZENE (%) 95
SURROGATE LIMITS: (80 - 120)
COMMENTS NOTES:
N/A

PINNACLE
LABORATORIES

2709-D Pan American Freeway NE
Albuquerque, New Mexico 87107
Phone (505) 344-3777
Fax (505) 344-4413

GAS CHROMATOGRAPHY QUALITY CONTROL
MSMSD

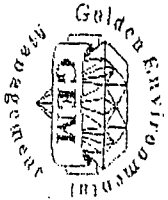
TEST	: EPA 8021 MODIFIED	PINNACLE I.D.	: 109048
MSMSD #	: 091401	DATE EXTRACTED	: NA
CLIENT	: GOLDEN ENVIRONMENTAL MNGT.	DATE ANALYZED	: 09/14/01
PROJECT #	: 6169	SAMPLE MATRIX	: AQUEOUS
PROJECT NAME	: EPFS REMEDIATION PROJECT	UNITS	: UG/L

PARAMETER	SAMPLE RESULT	CONC SPIKE	SPIKED SAMPLE	% REC	DUP SPIKE	DUP % REC	RPD	REC LIMITS	RPD LIMITS
BENZENE	<0.5	20.0	16.2	81	16.5	83	2	(80 - 120)	20
TOLUENE	<0.5	20.0	19.2	96	19.6	98	2	(80 - 120)	20
ETHYLBENZENE	<0.5	20.0	21.0	105	21.1	106	0	(80 - 120)	20
TOTAL XYLENES	<0.5	60.0	63.3	106	65.1	109	3	(80 - 120)	20

CHEMIST NOTES:
N/A

$$\% \text{ Recovery} = \frac{(\text{Spike Sample Result} - \text{Sample Result})}{\text{Spike Concentration}} \times 100$$

$$\text{RPD (Relative Percent Difference)} = \frac{(\text{Sample Result} - \text{Duplicate Result})}{\text{Average Result}} \times 100$$



Well Development and Purging Data

Project No. 6169 Development Purging Page 1 of 1

Task No. _____ Site Name/Identification Remediation #105155 site address

Well No. MW 1 Project Manager San Juan CO

Client/Project Name EL Paso Field Services EPFS Remediation project

Development Criteria Development 5 Casing Volumes of Water Removal Stabilization of Indicator Parameters Other _____

Water Volume Calculation
 Initial Depth of Well (feet) 80.08
 Initial Depth to Water (feet) 9.27
 Height of Water Column in Well (feet) 10.81
 Diameter (inches): Well 4" Gravel Pack _____

Item	Water Volume in Well Cubic Feet	Gallons	Gallons to be Removed
Well Casing	<u>0.91</u>	<u>205.33</u>	<u>21.55</u>
Gravel Pack			
Drilling Fluids			
Total			<u>21.55</u>

Methods of Development
 Pump Bailer
 Centrifugal Bottom Valve
 Submersible Double Check Valve
 Peristaltic Stainless-steel Kemmerer
 Other _____

Water Disposal Water Disposal
WITZ Separator Bloomfield NM.

Sampling Activities
 Type of Container VOA No. of Containers 2
 Parameters Sampled For BTEX

Date	Time	Development Method		Removal Rate (gal/min)	Inlet Depth (feet)	Ending Water Depth (feet)	Water Volume Removed (gallons)		Product Volume Removed (gallons)		Temperature (°C)	pH	Conductivity (microhm/cm)	Dissolved Oxygen (mg/L)	Comments
		Pump	Bailer				Incremental	Cumulative	Incremental	Cumulative					
<u>9-10-01</u>	<u>0825</u>		<u>X</u>				<u>4.25</u>	<u>4.25</u>			<u>18.7</u>	<u>7.02</u>	<u>0980</u>	<u>2.4</u>	<u>Stear Eston egg</u>
	<u>1031</u>		<u>X</u>				<u>4.25</u>	<u>8.5</u>			<u>18</u>	<u>7.03</u>	<u>1040</u>		<u>"</u>
	<u>1037</u>		<u>X</u>				<u>4.25</u>	<u>12.75</u>			<u>17.1</u>	<u>7.03</u>	<u>1040</u>		<u>"</u>
	<u>1042</u>						<u>4.25</u>	<u>17</u>			<u>16.7</u>	<u>7.01</u>	<u>1040</u>		<u>"</u>
	<u>1048</u>					<u>14.02</u>	<u>4.25</u>	<u>21.25</u>			<u>16.6</u>	<u>7.06</u>	<u>1030</u>		<u>no change</u>

Check the date and time that the development criteria are met.
 Comments Sampled for BTEX 1055

Developer's Signature Chris A. M. Date 9-10-01

Reviewer William Date 9-10-01

U.S. ENVIRONMENTAL PROTECTION AGENCY

NOTICE OF INSPECTION

Address (EPA Regional Office) Region 9 Environmental Inspection Agency 75 Hawthorne Street (WTR-9) San Francisco, CA 94105	Inspection Contractor	Firm To Be Inspected
--	-----------------------	----------------------

Date	Notice of inspection is hereby given according to Section 1445(b) of the Safe Drinking Water Act (42 U.S.C. §300 f et seq.).
Hour	

Reason For Inspection

For the purpose of inspecting records, files, papers, processes, controls and facilities, and obtaining samples to determine whether the person subject to an applicable underground injection control program has acted or is acting in compliance with the Safe Drinking Water Act and any applicable permit or rule.

Section 1445(b) of the SDWA (42 U.S.C. §300 j-4 (b) is quoted on the reverse of this form.

Receipt of this Notice of Inspection is hereby acknowledged.

Firm Representative	Date	Inspector
---------------------	------	-----------

PLEASE FILL THIS FORM IN COMPLETELY.

SHADED AREAS ARE FOR LAB USE ONLY.

Pinnacle Laboratories
Pinnacle Laboratories Inc.

CHAIN OF CUSTODY
DATE: 9-10-01 PAGE: 1 OF 1

PLI Accession #:

ANALYSIS REQUEST

PROJECT MANAGER: LISA Wynn		COMPANY: GEM ADDRESS: 906 San Juan Blvd S-7E D Farmington NM 87401 PHONE: (505) 566-9116 FAX: (505) 566-9120 BILL TO: SCOT POPE COMPANY: El Paso Field Services ADDRESS: 604 Reilly Ave Farmington NM.	
PROJECT INFORMATION PROJ. NO.: 6169 PROJ. NAME: GOLF RENOVATION P.O. NO.: SHIPPED VIA: SAMPLE RECEIPT NO. CONTAINERS: CUSTODY SEALS: Y/N/NA RECEIVED INTACT: BLUE ICE/CE:	PRIOR AUTHORIZATION IS REQUIRED FOR RUSH PROJECTS: (RUSH) <input type="checkbox"/> 24hr <input type="checkbox"/> 48hr <input type="checkbox"/> 72hr <input type="checkbox"/> 1 WEEK CERTIFICATION REQUIRED: <input type="checkbox"/> NM <input type="checkbox"/> SDWA <input type="checkbox"/> OTHER METHANOL PRESERVATION <input type="checkbox"/> COMMENTS: FIXED FEE <input type="checkbox"/> REMOVING ET # 1 meter # 75155	SAMPLE ID: REM-0104-MW1 DATE: 9-10-01 TIME: 1055 MATRIX: H2O LAB I.D.:	Petroleum Hydrocarbons (418.1) TRPH (MOD.8015) Diesel/Direct Inject (M8015) Gas/Purge & Trap 8021 (BTEX)/8015 (Gasoline) MTBE 8021 (BTEX) <input type="checkbox"/> MTBE <input type="checkbox"/> TMB <input type="checkbox"/> PCE 8021 (TCL) 8021 (EDX) 8021 (HALO) 8021 (CUST) 504.1 EDB <input type="checkbox"/> / DBCP <input type="checkbox"/> 8260 (TCL) Volatile Organics 8260 (Full) Volatile Organics 8260 (CUST) Volatile Organics 8260 (Landfill) Volatile Organics Pesticides /PCB (608/8081/8082) Herbicides (615/8151) Base/Neutral/Acid Compounds GC/MS (625/8270) Polynuclear Aromatics (610/8310/8270-SIMS) General Chemistry: Priority Pollutant Metals (13) Target Analyte List Metals (23) RCRA Metals (8) RCRA Metals by TCLP (Method 1311) Metals: NUMBER OF CONTAINERS
RELINQUISHED BY: 1. Signature: [Signature] Printed Name: [Name] Date: 9/10/01 Time: 1500 Company: Pinnacle Laboratories Inc.		RELINQUISHED BY: 2. Signature: [Signature] Printed Name: [Name] Date: [Date] Time: [Time] Company: Pinnacle Laboratories Inc.	
RECEIVED BY: 1. Signature: [Signature] Printed Name: [Name] Date: [Date] Time: [Time] Company: Pinnacle Laboratories Inc.		RECEIVED BY: (LAB) 2. Signature: [Signature] Printed Name: [Name] Date: [Date] Time: [Time] Company: Pinnacle Laboratories Inc.	

PINNACLE
LABORATORIES

2709-D Pan American Freeway NE
Albuquerque, New Mexico 87107
Phone (505) 344-3777
Fax (505) 344-4413

Pinnacle Lab ID number 106104
June 29, 2001

GOLDEN ENVIRONMENTAL MNGT.
906 SAN JUAN BLVD.
FARMINGTON, NM 87401

EL PASO FIELD SERVICES
614 RIELLY AVENUE
FARMINGTON, NM 87401

Project Name EPFS REMEDIATION PROJECT
Project Number 6169

Attention: LISA WINN/SCOTT POPE *Remedia Et A1 #1 75155*

On 06/22/01 Pinnacle Laboratories, Inc., (ADHS License No. AZ0592 pending), received a request to analyze **aqueous** samples. The samples were analyzed with EPA methodology or equivalent methods. The results of these analyses and the quality control data, which follow each set of analyses, are enclosed.

If you have any questions or comments, please do not hesitate to contact us at (505)344-3777.



H. Mitchell Rubenstein, Ph. D.
General Manager

MR: jt

Enclosure

PINNACLE
LABORATORIES

2709-D Pan American Freeway NE
Albuquerque, New Mexico 87107
Phone (505) 344-3777
Fax (505) 344-4413

CLIENT	: GOLDEN ENVIRONMENTAL MNGT.	PINNACLE ID	: 106104
PROJECT #	: 6169	DATE RECEIVED	: 06/22/01
PROJECT NAME	: EPFS REMEDIATION PROJECT	REPORT DATE	: 06/29/01

PINNACLE ID #	CLIENT DESCRIPTION	MATRIX	DATE COLLECTED
106104 - 01	REM-0106-MW 1	AQUEOUS	06/19/01
106104 - 02	TRIP BLANK	AQUEOUS	06/18/01

PINNACLE
LABORATORIES

2709-D Pan American Freeway NE
Albuquerque, New Mexico 87107
Phone (505) 344-3777
Fax (505) 344-4413

GAS CHROMATOGRAPHY RESULTS

TEST : EPA 8021 MODIFIED
CLIENT : GOLDEN ENVIRONMENTAL MNGT.
PROJECT # : 6169
PROJECT NAME : EPFS REMEDIATION PROJECT

PINNACLE I.D.: 106104

SAMPLE ID. #	CLIENT I.D.	MATRIX	DATE SAMPLED	DATE EXTRACTED	DATE ANALYZED	DIL. FACTOR
01	REM-0106-MW 1	AQUEOUS	06/19/01	NA	06/26/01	1
02	TRIP BLANK	AQUEOUS	06/18/01	NA	06/27/01	1

PARAMETER	DET. LIMIT	UNITS	REM-0106-MW	
			1	TRIP BLANK
BENZENE	0.5	UG/L	7.8	< 0.5
TOLUENE	0.5	UG/L	0.8	< 0.5
ETHYLBENZENE	0.5	UG/L	11	< 0.5
TOTAL XYLENES	0.5	UG/L	54	< 0.5

SURROGATE:
BROMOFLUOROBENZENE (%) 132** 94
SURROGATE LIMITS (80 - 120)

CHEMIST NOTES:

**Surrogate was out of criteria due to matrix interference.

PINNACLE
LABORATORIES

2709-D Pan American Freeway NE
Albuquerque, New Mexico 87107
Phone (505) 344-3777
Fax (505) 344-4413

GAS CHROMATOGRAPHY RESULTS
REAGENT BLANK

TEST	: EPA 8021 MODIFIED	PINNACLE I.D.	: 106104
BLANK I. D.	: 062601	DATE EXTRACTED	: NA
CLIENT	: GOLDEN ENVIRONMENTAL MNGT.	DATE ANALYZED	: 06/26/01
PROJECT #	: 6169	SAMPLE MATRIX	: AQUEOUS
PROJECT NAME	: EPFS REMEDIATION PROJECT		

PARAMETER	UNITS	
BENZENE	UG/L	<0.5
TOLUENE	UG/L	<0.5
ETHYLBENZENE	UG/L	<0.5
TOTAL XYLENES	UG/L	<0.5

SURROGATE:
BROMOFLUOROBENZENE (%) 92

SURROGATE LIMITS: (80 - 120)

REMARKS:

PINNACLE
LABORATORIES

2709-D Pan American Freeway NE
Albuquerque, New Mexico 87107
Phone (505) 344-3777
Fax (505) 344-4413

GAS CHROMATOGRAPHY RESULTS
REAGENT BLANK

TEST	: EPA 8021 MODIFIED	PINNACLE I.D.	: 106104
BLANK I. D.	: 062701	DATE EXTRACTED	: NA
CLIENT	: GOLDEN ENVIRONMENTAL MNGT.	DATE ANALYZED	: 06/27/01
PROJECT #	: 6169	SAMPLE MATRIX	: AQUEOUS
PROJECT NAME	: EPFS REMEDIATION PROJECT		

PARAMETER	UNITS	
BENZENE	UG/L	<0.5
TOLUENE	UG/L	<0.5
ETHYLBENZENE	UG/L	<0.5
TOTAL XYLENES	UG/L	<0.5

SURROGATE:
BROMOFLUOROBENZENE (%) 92
SURROGATE LIMITS: (80 - 120)

REMARKS/NOTES:

PINNACLE
LABORATORIES

2709-D Pan American Freeway NE
Albuquerque, New Mexico 87107
Phone (505) 344-3777
Fax (505) 344-4413

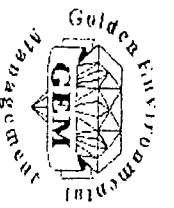
GAS CHROMATOGRAPHY QUALITY CONTROL
MSMSD

TEST : EPA 8021 MODIFIED
MSMSD # : 106106-01
CLIENT : GOLDEN ENVIRONMENTAL MNGT.
PROJECT # : 6169
PROJECT NAME : EPFS REMEDIATION PROJECT

PINNACLE I.D. : 106104
DATE EXTRACTED : NA
DATE ANALYZED : 06/26/01
SAMPLE MATRIX : AQUEOUS
UNITS : UG/L

PARAMETER	SAMPLE RESULT	CONC SPIKE	SPIKED SAMPLE	% REC	DUP SPIKE	DUP % REC	RPD	REC LIMITS	RPD LIMITS
BENZENE	<0.5	20.0	21.3	107	22.7	114	6	(80 - 120)	20
TOLUENE	<0.5	20.0	20.4	102	21.9	110	7	(80 - 120)	20
ETHYLBENZENE	<0.5	20.0	20.6	103	22.5	113	9	(80 - 120)	20
TOTAL XYLENES	1.5	60.0	62.8	105	68.1	114	8	(80 - 120)	20

REMARKS NOTES:
N/A



Well Development and Purging Data

Project No. GLCG Development Purging Page 1 of 1

Task No. 2 Site Name/Identification RemedTA #1 (75ISS) Site Address Revel Sun Fun CO.

Well No. Mw1 Client/Project Name EL Paso Field Services EPFS Remediation project Project Manager Lisa Winn

Development Criteria 3 to 5 Casing Volumes of Water Removal Water Volume Calculation 20.01 Initial Depth of Well (feet) 8.97 Serial No. (if applicable) Hydac

Stabilization of Indicator Parameters Height of Water Column in Well (feet) 11.04 DO Monitor Hydac

Other Diameter (inches): Well 4" Gravel Pack Conductivity Meter Hydac

Other Temperature Meter

Methods of Development Pump Centrifugal Bailor Bottom Valve Double Check Valve Stainless-steel Kemmerer

Submersible Peristaltic

Item	Water Volume in Well Cubic Feet	Gallons	Gallons to be Removed
Well Casing	11.04	22023	21.6
Gravel Pack			
Drilling Fluids			
Total			21.6

Water Disposal Kurz Separator Roomfield NM

Sampling Activities

Type of Container LD4 No. of Containers 2

Parameters Sampled For BTEX 5021

Water Removal Data

Date	Time	Development Method		Removal Rate (gal/min)	Intake Depth (feet)	Ending Water Depth (feet)	Water Volume Removed (gallons)		Product Volume Removed (gallons)		Temperature (°C)	pH	Conductivity (umhos/cm)	Dissolved Oxygen (mg/L)	Comments
		Pump	Bailor				Increment	Cumul	Increment	Cumul					
9-01	9:40		X				4.5	9.0			17.9	7.3	1040		Other Bottom 85
	09:45		X				4.5	13.5			16.1	7.3	1010		"
	09:52		X				4.5	18			15.1	7.3	980		"
	09:57		X				4.5	22.5			14.7	7.2	990		"
	10:02		X			15.93	4.5	22.5			14.7	7.2	990		no change

Circle the date and time that the development criteria are met.

Comments Sampled for BTEX 1010

Developer's Signature (s) [Signature] Date 9-19-01 Reviewer [Signature] Date 9/22/01

PLEASE FILL THIS FORM IN COMPLETELY.

SHADED AREAS ARE FOR LAB USE ONLY.

Pinnacle Laboratories
Pinnacle Laboratories Inc.

CHAIN OF CUSTODY
DATE: 6-19-01 PAGE: 1 OF 1

PL Accession #

PROJECT MANAGER: LISA Wynn

COMPANY: GFM

ADDRESS: 906 Sen Francisco Blvd.

PHONE: (505) 566-9116

FAX: (505) 566-9120

BILL TO: Scott Pope

COMPANY: El Paso Field Services

ADDRESS: 614 Rellly Ave.
Farmington N.M. 87499

SAMPLE ID DATE TIME MATRIX LAB ID

Rem 0106-Mw1 6-15-01 1010 H₂O
TR110 Blank 6-15-01 1350 H₂O

- Petroleum Hydrocarbons (418.1) TRPH (MOD.8015) Diesel/Direct Inject
- (M8015) Gas/Purge & Trap
- 8021 (BTEX)/8015 (Gasoline) MTBE
- 8021 (BTEX) MTBE TMB PCE
- 8021 (TCL)
- 8021 (EDX)
- 8021 (HALO)
- 8021 (CUST)
- 504.1 EDB / DBCP
- 8260 (TCL) Volatile Organics
- 8260 (Full) Volatile Organics
- 8260 (CUST) Volatile Organics
- 8260 (Landfill) Volatile Organics
- Pesticides /PCB (608/8081/8082)
- Herbicides (615/8151)
- Base/Neutral/Acid Compounds GC/MS (625/8270)
- Polynuclear Aromatics (610/8310/8270-SIMS)
- General Chemistry:
- Priority Pollutant Metals (13)
- Target Analyte List Metals (23)
- RCRA Metals (8)
- RCRA Metals by TCLP (Method 1311)
- Metals:

NUMBER OF CONTAINERS

PROJECT INFORMATION

PROJ NO: 6169
PROJ NAME: EDFS Remediation Project
P.O. NO.:
SHIPPED VIA:
SAMPLE RECEIPT
NO. CONTAINERS:
CUSTODY SEALS: Y/N/NA
RECEIVED INTACT:
BLUE ICE/ICE

PRIOR AUTHORIZATION IS REQUIRED FOR RUSH PROJECTS

(RUSH) 24hr 48hr 72hr 1 WEEK (NORMAL)
CERTIFICATION REQUIRED: NM SDWA OTHER
METHANOL PRESERVATION
COMMENTS: FIXED FEE
Rementa ET. AL # 1
Meter # 75155

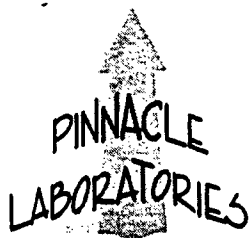
RELINQUISHED BY

Signature: [Signature] Time: 1300
Printed Name: Chris Ametz Date: 6-27-01
Company: Pinnacle Laboratories Inc.
RECEIVED BY: 1
Signature: [Signature] Time: 1
Printed Name: Date: 1

RELINQUISHED BY

Signature: [Signature] Time: 2
Printed Name: Date: 2
Company: Pinnacle Laboratories Inc.
RECEIVED BY: (CAB) 2
Signature: [Signature] Time: 2
Printed Name: Date: 2

2709-D Pan American Freeway NE
Albuquerque, New Mexico 87107
Phone (505) 344-3777
Fax (505) 344-4413



Pinnacle Lab ID number 103089
April 04, 2001

PHILIP ENVIRONMENTAL
4000 MONROE ROAD
FARMINGTON, NM 87401

EL PASO FIELD SERVICES
614 RIELLY STREET
FARMINGTON, NM 87401

Project Name EPFS QUARTERLY SAMPLING
Project Number 62800107

Attention: ROBERT THOMPSON/SCOTT POPE

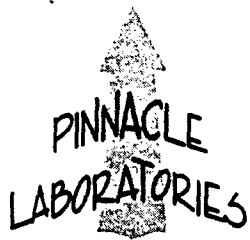
On 03/28/01 Pinnacle Laboratories, Inc., (ADHS License No. AZ0592 pending), received a request to analyze aqueous samples. The samples were analyzed with EPA methodology or equivalent methods. The results of these analyses and the quality control data, which follow each set of analyses, are enclosed.

If you have any questions or comments, please do not hesitate to contact us at (505)344-3777.

H. Mitchell Rubenstein, Ph. D.
General Manager

MR: jt

Enclosure



2709-D Pan American Freeway NE
Albuquerque, New Mexico 87107
Phone (505) 344-3777
Fax (505) 344-4413

GAS CHROMATOGRAPHY RESULTS

TEST : EPA 8021 MODIFIED
CLIENT : PHILIP ENVIRONMENTAL
PROJECT # : 62800107
PROJECT NAME : EPFS QUARTERLY SAMPLING

PINNACLE I.D.: 103089

SAMPLE ID. #	CLIENT I.D.	MATRIX	DATE SAMPLED	DATE EXTRACTED	DATE ANALYZED	DIL. FACTOR
01	REM-0301-MW01	AQUEOUS	03/27/01	NA	03/29/01	1
02	TRIP BLANK	AQUEOUS	03/12/01	NA	03/29/01	1

PARAMETER	DET. LIMIT	UNITS	REM-0301-MW01	TRIP BLANK
BENZENE	0.5	UG/L	6.2	< 0.5
TOLUENE	0.5	UG/L	0.6	< 0.5
ETHYLBENZENE	0.5	UG/L	10	< 0.5
TOTAL XYLENES	0.5	UG/L	43	< 0.5

SURROGATE:
BROMOFLUOROBENZENE (%) 133* 100
SURROGATE LIMITS (80 - 120)

CHEMIST NOTES:

* = HIGH SURROGATE RECOVERY DUE TO MATRIX INTERFERENCE.



GAS CHROMATOGRAPHY RESULTS
REAGENT BLANK

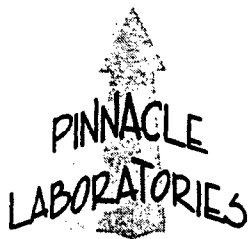
TEST : EPA 8021 MODIFIED PINNACLE I.D. : 103089
BLANK I. D. : 032901 DATE EXTRACTED : NA
CLIENT : PHILIP ENVIRONMENTAL DATE ANALYZED : 03/29/01
PROJECT # : 62800107 SAMPLE MATRIX : AQUEOUS
PROJECT NAME : EPFS QUARTERLY SAMPLING

PARAMETER	UNITS	
BENZENE	UG/L	<0.5
TOLUENE	UG/L	<0.5
ETHYLBENZENE	UG/L	<0.5
TOTAL XYLENES	UG/L	<0.5

SURROGATE:
BROMOFLUOROBENZENE (%) 95
SURROGATE LIMITS: (80 - 120)

ANALYST NOTES:

NA



2709-D Pan American Freeway NE
 Albuquerque, New Mexico 87107
 Phone (505) 344-3777
 Fax (505) 344-4413

GAS CHROMATOGRAPHY QUALITY CONTROL
 MSMSD

TEST	: EPA 8021 MODIFIED	PINNACLE I.D.	: 103089
MSMSD #	: 103097-03	DATE EXTRACTED	: NA
CLIENT	: PHILIP ENVIRONMENTAL	DATE ANALYZED	: 03/29/01
PROJECT #	: 62800107	SAMPLE MATRIX	: AQUEOUS
PROJECT NAME	: EPFS QUARTERLY SAMPLING	UNITS	: UG/L

PARAMETER	SAMPLE RESULT	CONC SPIKE	SPIKED SAMPLE	% REC	DUP SPIKE	DUP % REC	RPD	REC LIMITS	RPD LIMITS
BENZENE	<0.5	20.0	16.2	81	16.8	84	4	(80 - 120)	20
TOLUENE	<0.5	20.0	20.1	101	19.2	96	5	(80 - 120)	20
ETHYLBENZENE	<0.5	20.0	20.8	104	19.9	100	4	(80 - 120)	20
TOTAL XYLENES	<0.5	60.0	57.1	95	54.4	91	5	(80 - 120)	20

REMARKS NOTES:
 N/A

$$\% \text{ Recovery} = \frac{(\text{Spike Sample Result} - \text{Sample Result})}{\text{Spike Concentration}} \times 100$$

$$\text{RPD (Relative Percent Difference)} = \frac{(\text{Sample Result} - \text{Duplicate Result})}{\text{Average Result}} \times 100$$



Chain of Custody Record

4000 Monroe Road
Farmington, NM 87401

(505) 326-2262 Phone
(505) 326-2388 FAX

COC Serial No. C 2826

~~#103090~~ 103089

Project Name		Project Number		Phase / Task		Sampers		Laboratory		Sample Number (and depth)		Date	Time	Matrix	Total Number of Bottles	Type of Analysis and Bottle	LAB ID #	Comments	
EPCS Quarterly Sampling		62500107		Phase 1 Task 0301		G-maez		PENNACLE		ALBQ N.M.									
REM-0301-MW01		3-22-01		1023		H ₂ O									2	X	01	Reminta ETAL # (25/55)	
TRIP BLANK		3-12-01		1510		H ₂ O									1	X	02		

Relinquished by:		Received By:	
Signature	Date	Signature	Date
<i>[Signature]</i>	3-27-01	<i>[Signature]</i>	3/28/01
	1600		1900

Samples Iced: Yes No

Preservatives (ONLY for Water Samples)

Cyanide Sodium hydroxide (NaOH)

Volatile Organic Analysis Hydrochloric acid (HCl)

Metals Nitric acid (HNO₃)

TPH (418.1) Sulfuric acid (H₂SO₄)

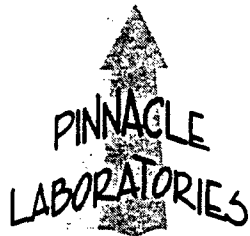
Other (Specify) *H₂SO₄*

Other (Specify) _____

Carrier: *Greyhound*

Shipping and Lab Notes: *Redd @ 4.8°C*

Airbill No: *611/606919908*



2709-D Pan American Freeway NE
Albuquerque, New Mexico 87107
Phone (505) 344-3777
Fax (505) 344-4413

Pinnacle Lab ID number **101088**
February 01, 2001

PHILIP ENVIRONMENTAL
4000 MONROE ROAD
FARMINGTON, NM 87401

EL PASO FIELD SERVICES
614 RIELLY STREET
FARMINGTON, NM 87401

Project Name EPFS ANNUAL SAMPLING
Project Number 62800107

Attention: ROBERT THOMPSON/SCOTT POPE

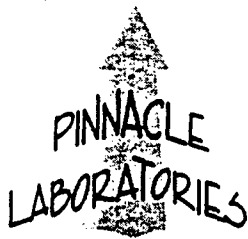
On 01/31/01 Pinnacle Laboratories, Inc., (ADHS License No. AZ0592 pending), received a request to analyze **aqueous** samples. The samples were analyzed with EPA methodology or equivalent methods. The results of these analyses and the quality control data, which follow each set of analyses, are enclosed.

If you have any questions or comments, please do not hesitate to contact us at (505)344-3777.

H. Mitchell Rubenstein, Ph. D.
General Manager

MR: jt

Enclosure



2709-D Pan American Freeway NE
 Albuquerque, New Mexico 87107
 Phone (505) 344-3777
 Fax (505) 344-4413

GAS CHROMATOGRAPHY RESULTS

TEST : EPA 8021 MODIFIED
 CLIENT : PHILIP ENVIRONMENTAL
 PROJECT # : 62800107
 PROJECT NAME : EPFS ANNUAL SAMPLING

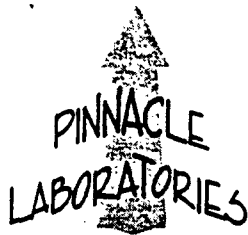
PINNACLE I.D.: 101088

SAMPLE ID. #	CLIENT I.D.	MATRIX	DATE SAMPLED	DATE EXTRACTED	DATE ANALYZED	DIL. FACTOR
01	REM-0101-MW 02	AQUEOUS	01/29/01	NA	01/31/01	1
02	REM-0101-MW 03	AQUEOUS	01/29/01	NA	01/31/01	1
03	JEN-0101-MW 03	AQUEOUS	01/29/01	NA	01/31/01	1

PARAMETER	DET. LIMIT	UNITS	REM-0101-MW 02	REM-0101-MW 03	JEN-0101-MW 03
BENZENE	0.5	UG/L	< 0.5	< 0.5	< 0.5
TOLUENE	0.5	UG/L	< 0.5	< 0.5	< 0.5
ETHYLBENZENE	0.5	UG/L	< 0.5	< 0.5	< 0.5
TOTAL XYLENES	0.5	UG/L	< 0.5	< 0.5	< 0.5

SURROGATE:
 BROMOFLUOROBENZENE (%) 99 100 101
 SURROGATE LIMITS (80 - 120)

CHEMIST NOTES:
 N/A



2709-D Pan American Freeway NE
Albuquerque, New Mexico 87107
Phone (505) 344-3777
Fax (505) 344-4413

GAS CHROMATOGRAPHY RESULTS
REAGENT BLANK

TEST	: EPA 8021 MODIFIED	PINNACLE I.D.	: 101088
BLANK I. D.	: 013101	DATE EXTRACTED	: NA
CLIENT	: PHILIP ENVIRONMENTAL	DATE ANALYZED	: 01/31/01
PROJECT #	: 62800107	SAMPLE MATRIX	: AQUEOUS
PROJECT NAME	: EPFS ANNUAL SAMPLING		

PARAMETER	UNITS	
BENZENE	UG/L	<0.5
TOLUENE	UG/L	<0.5
ETHYLBENZENE	UG/L	<0.5
TOTAL XYLENES	UG/L	<0.5

SURROGATE:
BROMOFLUOROBENZENE (%) 100
SURROGATE LIMITS: (80 - 120)
CHEMIST NOTES:



2709-D Pan American Freeway NE
 Albuquerque, New Mexico 87107
 Phone (505) 344-3777
 Fax (505) 344-4413

GAS CHROMATOGRAPHY QUALITY CONTROL
 MSMSD

TEST : EPA 8021 MODIFIED
 MSMSD # : 013101
 CLIENT : PHILIP ENVIRONMENTAL
 PROJECT # : 62800107
 PROJECT NAME : EPFS ANNUAL SAMPLING

PINNACLE I.D. : 101088
 DATE EXTRACTED : NA
 DATE ANALYZED : 01/31/01
 SAMPLE MATRIX : AQUEOUS
 UNITS : UG/L

PARAMETER	SAMPLE RESULT	CONC SPIKE	SPIKED SAMPLE	% REC	DUP SPIKE	DUP % REC	RPD	REC LIMITS	RPD LIMITS
BENZENE	<0.5	20.0	20.3	102	20.7	104	2	(80 - 120)	20
TOLUENE	<0.5	20.0	18.1	91	18.3	92	1	(80 - 120)	20
ETHYLBENZENE	<0.5	20.0	19.5	98	19.8	99	2	(80 - 120)	20
TOTAL XYLENES	<0.5	60.0	57.1	95	57.9	97	1	(80 - 120)	20

REMARKS/NOTES:

N/A

$$\% \text{ Recovery} = \frac{(\text{Spike Sample Result} - \text{Sample Result})}{\text{Spike Concentration}} \times 100$$

$$\text{RPD (Relative Percent Difference)} = \frac{(\text{Sample Result} - \text{Duplicate Result})}{\text{Average Result}} \times 100$$

PHILIP

ENVIRONMENTAL

Well Number MW 03

Project Location
City/State

WELL DEVELOPMENT AND PURGING DATA

Serial No. WDPD _____

Page 1 of 2

Project Name EPFS Annual Sampling
 Client Company EL PASO FIELD SERVICES
 Site Name REMEDIATION ET AL #175155

Project Manager R Thompson
 Site Address Renal San Juan CO

Project No. 62800102
 Phase/Task No. 0301

Development Criteria

- 5 Casing Volumes of Water Removal
- Stabilization of Indicator Parameters
- Other _____

Methods of Development

- Pump _____
- Centrifugal _____
- Submersible _____
- Peristaltic _____
- Other _____

Water Removal Data

Item	Well Casing	Dravel Pack	Drilling Fluid	Tested
Volume of Water Removed	20.33	8.74	11.59	
Initial Depth of Well (feet)				
Initial Depth to Water (feet)				
Height of Water Column in Well (feet)				
Diameter (inches) Well	2"	3"		
Volume in Well	Cubic Feet	Gallons		
	11.59	199 X 3		
Volume to be Removed				
Temperature				5.64

Instruments

- pH Meter Hydac
- DO Monitor _____
- Conductivity Meter Hydac
- Temperature Meter Hydac
- Other _____

Water Disposal ERT2 Separator Bloomfield NM

Date	Time	Development Method	Removal Rate (gal/min)	Inlet Depth (feet)	Ending Water Depth (feet)	Water Volume Purged (gallons)	Conductivity (µmhos/cm)	Temperature (°C)	pH	Conductivity (µmhos/cm)	Dissolved Oxygen (mg/l)	Comments
01-29-01	12:21	X			1.25	10	9	6.25	1100			Change from 11 to 12
	12:25	X			1.25	9.7	6.23	1010				
	12:29	X			1.25	9.4	5.94	990				
	12:33	X			1.25	9.7	5.92	1000				
	12:36	X			1.25	9.4	5.75	1000				No Change

Circle the date and time that the development criteria are met.

Comments Sampled for BTEX 12/15

Developer's Signature [Signature]

Date 01-29-01

Reviewer RT

Date 1/31/01

Well Number MW 02

Development permit # 13499

WELL DEVELOPMENT AND PURGING DATA

Serial No. WDPD. _____

Page 1 of 1

Project Name EPFS ANM well Sampling

Project Manager R Thompson

Project No. 62800107

Client Company Ek Paso Field Services

Site Address Rural San Juan CO.

Phase/Task No. 0301

Site Name Rementa ET AL #1 (OS 155)

Development Criteria

- 3 to 5 Casing Volumes of Water Removal
- Stabilization of Indicator Parameters
- Other _____

Water Volume Calculation

Initial Depth of Well (feet) 15.32
 Initial Depth to Water (feet) 7.13
 Height of Water Column in Well (feet) 8.24
 Diameter (inches): Well 2" Gravel Pack _____

Item	Water Volume in Well (Cubic Feet)	Gallons	Gallons to be Removed
Well Casing	<u>8.24</u>	<u>1.34</u>	<u>X3</u>
Gravel Pack			
Drilling fluids			
Total			<u>4.02</u>

Methods of Development

- Pump
- Centrifugal
- Submersible
- Peristaltic
- Other _____

Boiler

- Bottom Valve
- Double Check Valve
- Stainless-steel Kemmerer

Instruments

- pH Meter
- DO Monitor
- Conductivity Meter
- Temperature Meter
- Other _____

Serial No. (if applicable) _____

Hydac
Hydac

Water Disposal

KITZ Separator Blumfield NM

Water Removal Data

Date	Time	Development Method		Removal Rate (gal/min)	Intake Depth (feet)	Ending Water Depth (feet)	Water Volume Pumped (gallons)	Conductivity (umhos/cm)	Temperature (°C)	pH	Product Volume Removed (gallons)	Conductivity (umhos/cm)	Dissolved Oxygen (mg/l)	Comments
		Pump	Boiler											
01-29-01	1130		X				1		7.4	6.64	640			210-20 Bottom
	1132		X				1		9	6.42	610			"
	1135		X				1		9.6	6.27	570			"
	1140		X				1		9.6	6.25	530			"
	1143		X				1		9	6.32	490			No change

Circle the date and time that the development criteria are met.

Comments Sampled for BTEX 1150

Developer's Signature(s) Debra May

Date 01-29-01

Reviewer RT

Date 1/31/01

b.c. Ramenta ET AL #1 file
Jennapah #1 file
GCU #124E file

CERTIFIED MAIL 7000 1670 0012 7260 9280

July 11, 2001

Mr. William E. Freeman
Navajo Environmental Protection Agency
P. O. Box 1999
Shiprock, New Mexico 87420

RE: 2nd Quarter 2001 Analytical Reports

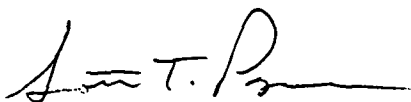
Dear Mr. Freeman:

Attached are the quarterly analytical results for the El Paso Field Services monitor wells located on Navajo lands. The sample was collected on June 19, 2001 at the Rementa Et Al #1. This attachment represents the second quarter groundwater sampling for the year 2001 at the Rementa Et Al #1. The Bisti #1 Flare Pit sampling will be covered in the Annual Report for the site, which will be submitted when results of the pit excavation have been compiled.

Product removal continues at the Jennapah #1 and GCU #124E.

Should you have any questions or comments regarding the enclosed report, please feel free to contact me at (505) 599-2124.

Sincerely,



Scott T. Pope, P.G.
Senior Environmental Scientist

Attachments: as stated

c.c. James Walker, USEPA, Certified Mail 7000 1670 0012 7260 9297
NNEPA - File

RAMENTA ET AL #1