

District I  
1625 N. French Dr., Hobbs, NM 88240  
District II  
1301 W. Grand Avenue, Artesia, NM 88210  
District III  
1000 Rio Brazos Road, Aztec, NM 87410  
District IV  
1220 S. St. Francis Dr., Santa Fe, NM 87505

State of New Mexico  
Energy Minerals and Natural Resources  
Department  
Oil Conservation Division  
1220 South St. Francis Dr.  
Santa Fe, NM 87505

Form C-144  
July 21, 2008

For temporary pits, closed-loop systems, and below-grade tanks, submit to the appropriate NMOCD District Office.  
For permanent pits and exceptions submit to the Santa Fe Environmental Bureau office and provide a copy to the appropriate NMOCD District Office.

**Pit, Closed-Loop System, Below-Grade Tank, or  
Proposed Alternative Method Permit or Closure Plan Application**

Type of action: ☐ Permit of a pit, closed-loop system, below-grade tank, or proposed alternative method  
Existing BGT ☐ Closure of a pit, closed-loop system, below-grade tank, or proposed alternative method  
☒ Modification to an existing permit  
☐ Closure plan only submitted for an existing permitted or non-permitted pit, closed-loop system, below-grade tank, or proposed alternative method

**Instructions: Please submit one application (Form C-144) per individual pit, closed-loop system, below-grade tank or alternative request**

Please be advised that approval of this request does not relieve the operator of liability should operations result in pollution of surface water, ground water or the environment. Nor does approval relieve the operator of its responsibility to comply with any other applicable governmental authority's rules, regulations or ordinances.

1. Operator: XTO Energy, Inc. OGRID #: 5380  
Address: #382 County Road 3100, Aztec, NM 87410  
Facility or well name: Quine Gas Com #1  
API Number: 30-045-13295 OCD Permit Number: \_\_\_\_\_  
U/L or Qtr/Qtr P Section 31 Township 30N Range 12W County: San Juan  
Center of Proposed Design: Latitude 36.76519 Longitude 108.1329 NAD: ☐ 1927 ☒ 1983  
Surface Owner: ☐ Federal ☐ State ☒ Private ☐ Tribal Trust or Indian Allotment

2. ☐ **Pit:** Subsection F or G of 19.15.17.11 NMAC  
Temporary: ☐ Drilling ☐ Workover  
☐ Permanent ☐ Emergency ☐ Cavitation ☐ P&A  
☐ Lined ☐ Unlined Liner type: Thickness \_\_\_\_\_ mil ☐ LLDPE ☐ HDPE ☐ PVC ☐ Other \_\_\_\_\_  
☐ String-Reinforced  
Liner Seams: ☐ Welded ☐ Factory ☐ Other \_\_\_\_\_ Volume: \_\_\_\_\_ bbl Dimensions: L \_\_\_\_\_ x W \_\_\_\_\_ x D \_\_\_\_\_

3. ☐ **Closed-loop System:** Subsection H of 19.15.17.11 NMAC  
Type of Operation: ☐ P&A ☐ Drilling a new well ☐ Workover or Drilling (Applies to activities which require prior approval of a permit or notice of intent)  
☐ Drying Pad ☐ Above Ground Steel Tanks ☐ Haul-off Bins ☐ Other \_\_\_\_\_  
☐ Lined ☐ Unlined Liner type: Thickness \_\_\_\_\_ mil ☐ LLDPE ☐ HDPE ☐ PVC ☐ Other \_\_\_\_\_  
Liner Seams: ☐ Welded ☐ Factory ☐ Other \_\_\_\_\_

4. ☒ **Below-grade tank:** Subsection I of 19.15.17.11 NMAC  
Volume: 120 bbl Type of fluid: Produced Water  
Tank Construction material: Steel  
☐ Secondary containment with leak detection ☐ Visible sidewalls, liner, 6-inch lift and automatic overflow shut-off  
☐ Visible sidewalls and liner ☐ Visible sidewalls only ☒ Other Visible sidewalls, vaulted, automatic high-level shut off, no liner  
Liner type: Thickness \_\_\_\_\_ mil ☐ HDPE ☐ PVC ☐ Other \_\_\_\_\_

5. ☐ **Alternative Method:**  
Submittal of an exception request is required. Exceptions must be submitted to the Santa Fe Environmental Bureau office for consideration of approval.

6.

**Fencing:** Subsection D of 19.15.17.11 NMAC (*Applies to permanent pits, temporary pits, and below-grade tanks*)

- ☐ Chain link, six feet in height, two strands of barbed wire at top (*Required if located within 1000 feet of a permanent residence, school, hospital, institution or church*)
- ☐ Four foot height, four strands of barbed wire evenly spaced between one and four feet
- ☒ Alternate. Please specify Four foot height, steel mesh field fence (hogwire) with pipe top railing

7.

**Netting:** Subsection E of 19.15.17.11 NMAC (*Applies to permanent pits and permanent open top tanks*)

- ☐ Screen ☐ Netting ☒ Other Expanded metal or solid vaulted top
- ☐ Monthly inspections (If netting or screening is not physically feasible)

8.

**Signs:** Subsection C of 19.15.17.11 NMAC

- ☐ 12"x 24", 2" lettering, providing Operator's name, site location, and emergency telephone numbers
- ☒ Signed in compliance with 19.15.3.103 NMAC

9.

**Administrative Approvals and Exceptions:**

Justifications and/or demonstrations of equivalency are required. Please refer to 19.15.17 NMAC for guidance.

**Please check a box if one or more of the following is requested, if not leave blank:**

- ☐ Administrative approval(s): Requests must be submitted to the appropriate division district or the Santa Fe Environmental Bureau office for consideration of approval.
- ☐ Exception(s): Requests must be submitted to the Santa Fe Environmental Bureau office for consideration of approval.

10.

**Siting Criteria (regarding permitting):** 19.15.17.10 NMAC

**Instructions:** The applicant must demonstrate compliance for each siting criteria below in the application. Recommendations of acceptable source material are provided below. Requests regarding changes to certain siting criteria may require administrative approval from the appropriate district office or may be considered an exception which must be submitted to the Santa Fe Environmental Bureau office for consideration of approval. Applicant must attach justification for request. Please refer to 19.15.17.10 NMAC for guidance. Siting criteria does not apply to drying pads or above-grade tanks associated with a closed-loop system.

Ground water is less than 50 feet below the bottom of the temporary pit, permanent pit, or below-grade tank. - NM Office of the State Engineer - iWATERS database search; USGS; Data obtained from nearby wells	<input checked="" type="checkbox"/> Yes <input type="checkbox"/> No
Within 300 feet of a continuously flowing watercourse, or 200 feet of any other significant watercourse or lakebed, sinkhole, or playa lake (measured from the ordinary high-water mark). - Topographic map; Visual inspection (certification) of the proposed site	<input type="checkbox"/> Yes <input checked="" type="checkbox"/> No
Within 300 feet from a permanent residence, school, hospital, institution, or church in existence at the time of initial application. ( <i>Applies to temporary, emergency, or cavitation pits and below-grade tanks</i> ) - Visual inspection (certification) of the proposed site; Aerial photo; Satellite image	<input checked="" type="checkbox"/> Yes <input type="checkbox"/> No <input type="checkbox"/> NA
Within 1000 feet from a permanent residence, school, hospital, institution, or church in existence at the time of initial application. ( <i>Applies to permanent pits</i> ) - Visual inspection (certification) of the proposed site; Aerial photo; Satellite image	<input type="checkbox"/> Yes <input type="checkbox"/> No <input checked="" type="checkbox"/> NA
Within 500 horizontal feet of a private, domestic fresh water well or spring that less than five households use for domestic or stock watering purposes, or within 1000 horizontal feet of any other fresh water well or spring, in existence at the time of initial application. - NM Office of the State Engineer - iWATERS database search; Visual inspection (certification) of the proposed site	<input checked="" type="checkbox"/> Yes <input type="checkbox"/> No
Within incorporated municipal boundaries or within a defined municipal fresh water well field covered under a municipal ordinance adopted pursuant to NMSA 1978, Section 3-27-3, as amended. - Written confirmation or verification from the municipality; Written approval obtained from the municipality	<input checked="" type="checkbox"/> Yes <input type="checkbox"/> No
Within 500 feet of a wetland. - US Fish and Wildlife Wetland Identification map; Topographic map; Visual inspection (certification) of the proposed site	<input type="checkbox"/> Yes <input checked="" type="checkbox"/> No
Within the area overlying a subsurface mine. - Written confirmation or verification or map from the NM EMNRD-Mining and Mineral Division	<input type="checkbox"/> Yes <input checked="" type="checkbox"/> No
Within an unstable area. - Engineering measures incorporated into the design; NM Bureau of Geology & Mineral Resources; USGS; NM Geological Society; Topographic map	<input type="checkbox"/> Yes <input checked="" type="checkbox"/> No
Within a 100-year floodplain. - FEMA map	<input type="checkbox"/> Yes <input checked="" type="checkbox"/> No

11.  
**Temporary Pits, Emergency Pits, and Below-grade Tanks Permit Application Attachment Checklist:** Subsection B of 19.15.17.9 NMAC  
*Instructions: Each of the following items must be attached to the application. Please indicate, by a check mark in the box, that the documents are attached.*

☒ Hydrogeologic Report (Below-grade Tanks) - based upon the requirements of Paragraph (4) of Subsection B of 19.15.17.9 NMAC  
☐ Hydrogeologic Data (Temporary and Emergency Pits) - based upon the requirements of Paragraph (2) of Subsection B of 19.15.17.9 NMAC  
☒ Siting Criteria Compliance Demonstrations - based upon the appropriate requirements of 19.15.17.10 NMAC  
☒ Design Plan - based upon the appropriate requirements of 19.15.17.11 NMAC  
☒ Operating and Maintenance Plan - based upon the appropriate requirements of 19.15.17.12 NMAC  
☒ Closure Plan (Please complete Boxes 14 through 18, if applicable) - based upon the appropriate requirements of Subsection C of 19.15.17.9 NMAC and 19.15.17.13 NMAC  
☐ Previously Approved Design (attach copy of design)    API Number: \_\_\_\_\_ or Permit Number: \_\_\_\_\_

12.  
**Closed-loop Systems Permit Application Attachment Checklist:** Subsection B of 19.15.17.9 NMAC  
*Instructions: Each of the following items must be attached to the application. Please indicate, by a check mark in the box, that the documents are attached.*

☐ Geologic and Hydrogeologic Data (only for on-site closure) - based upon the requirements of Paragraph (3) of Subsection B of 19.15.17.9  
☐ Siting Criteria Compliance Demonstrations (only for on-site closure) - based upon the appropriate requirements of 19.15.17.10 NMAC  
☐ Design Plan - based upon the appropriate requirements of 19.15.17.11 NMAC  
☐ Operating and Maintenance Plan - based upon the appropriate requirements of 19.15.17.12 NMAC  
☐ Closure Plan (Please complete Boxes 14 through 18, if applicable) - based upon the appropriate requirements of Subsection C of 19.15.17.9 NMAC and 19.15.17.13 NMAC  
☐ Previously Approved Design (attach copy of design)    API Number: \_\_\_\_\_  
☐ Previously Approved Operating and Maintenance Plan    API Number: \_\_\_\_\_ *(Applies only to closed-loop system that use above ground steel tanks or haul-off bins and propose to implement waste removal for closure)*

13.  
**Permanent Pits Permit Application Checklist:** Subsection B of 19.15.17.9 NMAC  
*Instructions: Each of the following items must be attached to the application. Please indicate, by a check mark in the box, that the documents are attached.*

☐ Hydrogeologic Report - based upon the requirements of Paragraph (1) of Subsection B of 19.15.17.9 NMAC  
☐ Siting Criteria Compliance Demonstrations - based upon the appropriate requirements of 19.15.17.10 NMAC  
☐ Climatological Factors Assessment  
☐ Certified Engineering Design Plans - based upon the appropriate requirements of 19.15.17.11 NMAC  
☐ Dike Protection and Structural Integrity Design - based upon the appropriate requirements of 19.15.17.11 NMAC  
☐ Leak Detection Design - based upon the appropriate requirements of 19.15.17.11 NMAC  
☐ Liner Specifications and Compatibility Assessment - based upon the appropriate requirements of 19.15.17.11 NMAC  
☐ Quality Control/Quality Assurance Construction and Installation Plan  
☐ Operating and Maintenance Plan - based upon the appropriate requirements of 19.15.17.12 NMAC  
☐ Freeboard and Overtopping Prevention Plan - based upon the appropriate requirements of 19.15.17.11 NMAC  
☐ Nuisance or Hazardous Odors, including H<sub>2</sub>S, Prevention Plan  
☐ Emergency Response Plan  
☐ Oil Field Waste Stream Characterization  
☐ Monitoring and Inspection Plan  
☐ Erosion Control Plan  
☐ Closure Plan - based upon the appropriate requirements of Subsection C of 19.15.17.9 NMAC and 19.15.17.13 NMAC

14.  
**Proposed Closure:** 19.15.17.13 NMAC  
*Instructions: Please complete the applicable boxes, Boxes 14 through 18, in regards to the proposed closure plan.*

Type: ☐ Drilling ☐ Workover ☐ Emergency ☐ Cavitation ☐ P&A ☐ Permanent Pit ☒ Below-grade Tank ☐ Closed-loop System  
☐ Alternative  
 Proposed Closure Method: ☒ Waste Excavation and Removal  
☐ Waste Removal (Closed-loop systems only)  
☐ On-site Closure Method (Only for temporary pits and closed-loop systems)  
☐ In-place Burial ☐ On-site Trench Burial  
☐ Alternative Closure Method (Exceptions must be submitted to the Santa Fe Environmental Bureau for consideration)

15.  
**Waste Excavation and Removal Closure Plan Checklist:** (19.15.17.13 NMAC) *Instructions: Each of the following items must be attached to the closure plan. Please indicate, by a check mark in the box, that the documents are attached.*

☒ Protocols and Procedures - based upon the appropriate requirements of 19.15.17.13 NMAC  
☒ Confirmation Sampling Plan (if applicable) - based upon the appropriate requirements of Subsection F of 19.15.17.13 NMAC  
☒ Disposal Facility Name and Permit Number (for liquids, drilling fluids and drill cuttings)  
☒ Soil Backfill and Cover Design Specifications - based upon the appropriate requirements of Subsection H of 19.15.17.13 NMAC  
☒ Re-vegetation Plan - based upon the appropriate requirements of Subsection I of 19.15.17.13 NMAC  
☒ Site Reclamation Plan - based upon the appropriate requirements of Subsection G of 19.15.17.13 NMAC

16.

**Waste Removal Closure For Closed-loop Systems That Utilize Above Ground Steel Tanks or Haul-off Bins Only:** (19.15.17.13.D NMAC)

**Instructions:** Please identify the facility or facilities for the disposal of liquids, drilling fluids and drill cuttings. Use attachment if more than two facilities are required.

Disposal Facility Name: \_\_\_\_\_ Disposal Facility Permit Number: \_\_\_\_\_

Disposal Facility Name: \_\_\_\_\_ Disposal Facility Permit Number: \_\_\_\_\_

Will any of the proposed closed-loop system operations and associated activities occur on or in areas that *will not* be used for future service and operations?

☐ Yes (If yes, please provide the information below) ☐ No

*Required for impacted areas which will not be used for future service and operations:*

☐ Soil Backfill and Cover Design Specifications - based upon the appropriate requirements of Subsection H of 19.15.17.13 NMAC

☐ Re-vegetation Plan - based upon the appropriate requirements of Subsection I of 19.15.17.13 NMAC

☐ Site Reclamation Plan - based upon the appropriate requirements of Subsection G of 19.15.17.13 NMAC

17.

**Siting Criteria (regarding on-site closure methods only):** 19.15.17.10 NMAC

**Instructions:** Each siting criteria requires a demonstration of compliance in the closure plan. Recommendations of acceptable source material are provided below. Requests regarding changes to certain siting criteria may require administrative approval from the appropriate district office or may be considered an exception which must be submitted to the Santa Fe Environmental Bureau office for consideration of approval. Justifications and/or demonstrations of equivalency are required. Please refer to 19.15.17.10 NMAC for guidance.

Ground water is less than 50 feet below the bottom of the buried waste.

- NM Office of the State Engineer - iWATERS database search; USGS; Data obtained from nearby wells

☐ Yes ☐ No

☐ NA

Ground water is between 50 and 100 feet below the bottom of the buried waste

- NM Office of the State Engineer - iWATERS database search; USGS; Data obtained from nearby wells

☐ Yes ☐ No

☐ NA

Ground water is more than 100 feet below the bottom of the buried waste.

- NM Office of the State Engineer - iWATERS database search; USGS; Data obtained from nearby wells

☐ Yes ☐ No

☐ NA

Within 300 feet of a continuously flowing watercourse, or 200 feet of any other significant watercourse or lakebed, sinkhole, or playa lake (measured from the ordinary high-water mark).

- Topographic map; Visual inspection (certification) of the proposed site

☐ Yes ☐ No

Within 300 feet from a permanent residence, school, hospital, institution, or church in existence at the time of initial application.

- Visual inspection (certification) of the proposed site; Aerial photo; Satellite image

☐ Yes ☐ No

Within 500 horizontal feet of a private, domestic fresh water well or spring that less than five households use for domestic or stock watering purposes, or within 1000 horizontal feet of any other fresh water well or spring, in existence at the time of initial application.

- NM Office of the State Engineer - iWATERS database; Visual inspection (certification) of the proposed site

☐ Yes ☐ No

Within incorporated municipal boundaries or within a defined municipal fresh water well field covered under a municipal ordinance adopted pursuant to NMSA 1978, Section 3-27-3, as amended.

- Written confirmation or verification from the municipality; Written approval obtained from the municipality

☐ Yes ☐ No

Within 500 feet of a wetland.

- US Fish and Wildlife Wetland Identification map; Topographic map; Visual inspection (certification) of the proposed site

☐ Yes ☐ No

Within the area overlying a subsurface mine.

- Written confirmation or verification or map from the NM EMNRD-Mining and Mineral Division

☐ Yes ☐ No

Within an unstable area.

- Engineering measures incorporated into the design; NM Bureau of Geology & Mineral Resources; USGS; NM Geological Society; Topographic map

☐ Yes ☐ No

Within a 100-year floodplain.

- FEMA map

☐ Yes ☐ No

18.

**On-Site Closure Plan Checklist:** (19.15.17.13 NMAC) **Instructions:** Each of the following items must be attached to the closure plan. Please indicate, by a check mark in the box, that the documents are attached.

☐ Siting Criteria Compliance Demonstrations - based upon the appropriate requirements of 19.15.17.10 NMAC

☐ Proof of Surface Owner Notice - based upon the appropriate requirements of Subsection F of 19.15.17.13 NMAC

☐ Construction/Design Plan of Burial Trench (if applicable) based upon the appropriate requirements of 19.15.17.11 NMAC

☐ Construction/Design Plan of Temporary Pit (for in-place burial of a drying pad) - based upon the appropriate requirements of 19.15.17.11 NMAC

☐ Protocols and Procedures - based upon the appropriate requirements of 19.15.17.13 NMAC

☐ Confirmation Sampling Plan (if applicable) - based upon the appropriate requirements of Subsection F of 19.15.17.13 NMAC

☐ Waste Material Sampling Plan - based upon the appropriate requirements of Subsection F of 19.15.17.13 NMAC

☐ Disposal Facility Name and Permit Number (for liquids, drilling fluids and drill cuttings or in case on-site closure standards cannot be achieved)

☐ Soil Cover Design - based upon the appropriate requirements of Subsection H of 19.15.17.13 NMAC

☐ Re-vegetation Plan - based upon the appropriate requirements of Subsection I of 19.15.17.13 NMAC

☐ Site Reclamation Plan - based upon the appropriate requirements of Subsection G of 19.15.17.13 NMAC

19.

**Operator Application Certification:**

I hereby certify that the information submitted with this application is true, accurate and complete to the best of my knowledge and belief.

Name (Print): Kim Champlin Title: Environmental Representative  
 Signature: Kim Champlin Date: 01/02/2009  
 e-mail address: kim\_champlin@xtoenergy.com Telephone: (505) 333-3100

20.

**OCD Approval:** ☐ Permit Application (including closure plan) ☒ Closure Plan (only) ☐ OCD Conditions (see attachment)

OCD Representative Signature: [Signature] Approval Date: 10/03/14  
 Title: Environmental Engineer OCD Permit Number: \_\_\_\_\_

21.

**Closure Report (required within 60 days of closure completion):** Subsection K of 19.15.17.13 NMAC

*Instructions: Operators are required to obtain an approved closure plan prior to implementing any closure activities and submitting the closure report. The closure report is required to be submitted to the division within 60 days of the completion of the closure activities. Please do not complete this section of the form until an approved closure plan has been obtained and the closure activities have been completed.*

☐ Closure Completion Date: \_\_\_\_\_

22.

**Closure Method:**

☐ Waste Excavation and Removal ☐ On-Site Closure Method ☐ Alternative Closure Method ☐ Waste Removal (Closed-loop systems only)  
☐ If different from approved plan, please explain.

23.

**Closure Report Regarding Waste Removal Closure For Closed-loop Systems That Utilize Above Ground Steel Tanks or Haul-off Bins Only:**

*Instructions: Please indentify the facility or facilities for where the liquids, drilling fluids and drill cuttings were disposed. Use attachment if more than two facilities were utilized.*

Disposal Facility Name: \_\_\_\_\_ Disposal Facility Permit Number: \_\_\_\_\_

Disposal Facility Name: \_\_\_\_\_ Disposal Facility Permit Number: \_\_\_\_\_

Were the closed-loop system operations and associated activities performed on or in areas that *will not* be used for future service and operations?

☐ Yes (If yes, please demonstrate compliance to the items below) ☐ No

*Required for impacted areas which will not be used for future service and operations:*

- ☐ Site Reclamation (Photo Documentation)  
☐ Soil Backfilling and Cover Installation  
☐ Re-vegetation Application Rates and Seeding Technique

24.

**Closure Report Attachment Checklist:** *Instructions: Each of the following items must be attached to the closure report. Please indicate, by a check mark in the box, that the documents are attached.*

- ☐ Proof of Closure Notice (surface owner and division)  
☐ Proof of Deed Notice (required for on-site closure)  
☐ Plot Plan (for on-site closures and temporary pits)  
☐ Confirmation Sampling Analytical Results (if applicable)  
☐ Waste Material Sampling Analytical Results (required for on-site closure)  
☐ Disposal Facility Name and Permit Number  
☐ Soil Backfilling and Cover Installation  
☐ Re-vegetation Application Rates and Seeding Technique  
☐ Site Reclamation (Photo Documentation)

On-site Closure Location: Latitude \_\_\_\_\_ Longitude \_\_\_\_\_ NAD: ☐ 1927 ☐ 1983

25.

**Operator Closure Certification:**

I hereby certify that the information and attachments submitted with this closure report is true, accurate and complete to the best of my knowledge and belief. I also certify that the closure complies with all applicable closure requirements and conditions specified in the approved closure plan.

Name (Print): \_\_\_\_\_ Title: \_\_\_\_\_

Signature: \_\_\_\_\_ Date: \_\_\_\_\_

e-mail address: \_\_\_\_\_ Telephone: \_\_\_\_\_

## NEW MEXICO OIL CONSERVATION COMMISSION

## Well Location and Acreage Dedication Form

Section A.

DATE **MARCH 10, 1965**

Operator **PAN AMERICAN PETROLEUM CORPORATION** Lease **QUINE GAS UNIT**  
 Well No. **1** Unit Letter **I** Section **31** Township **30 NORTH** Range **12 WEST** NMPM  
 Located **1700** Feet From **SOUTH** Line, **1130** Feet From **EAST** Line  
 County **SAN JUAN** G. L. Elevation **REPORT LATER** Dedicated Acreage **317.38** Acres  
 Name of Producing Formation **DAKOTA** Pool **BASIN DAKOTA**

1. Is the Operator the only owner in the dedicated acreage outlined on the plat below?  
 Yes ☐ No ☒ **X**
2. If the answer to question one is "no", have the interests of all the owners been consolidated by communitization agreement or otherwise? Yes ☒ No ☐ If answer is "yes" Type of Consolidation **Communitization**  
**Agreements being prepared; force pooled by NMOCC Order No. R-2859.**
3. If the answer to question two is "no", list all the owners and their respective interests below.

OwnerLand Description

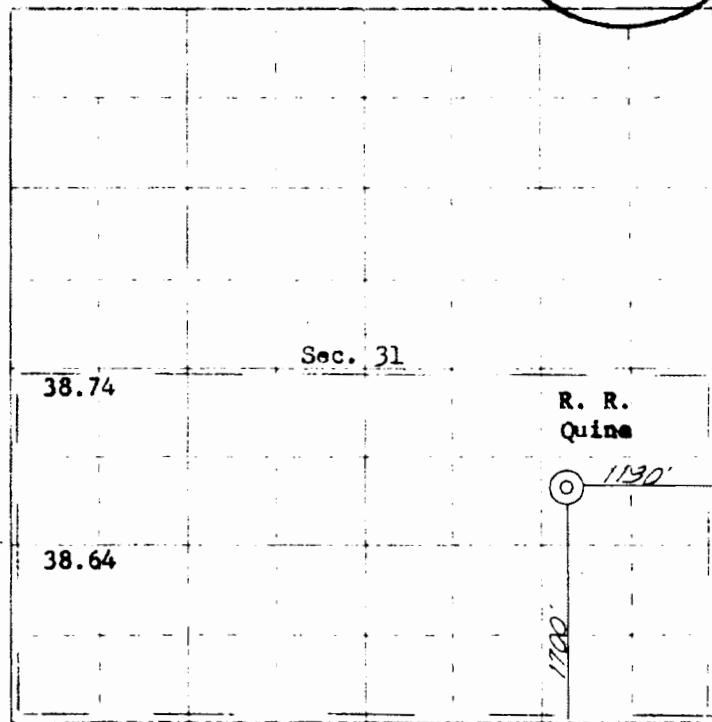
Section B.

Note: All distances must be from outer boundaries of section.

This is to certify that the information  
 in Section A above is true and complete  
 to the best of my knowledge and belief.

**PAN AMERICAN PETROLEUM CORP.***F. H. Hollingsworth* (Operator)**F. H. Hollingsworth**  
(Representative)**P. O. Box 480**  
(Address)**Farmington, New Mexico**

Ref: GLO plat dated 7 April 1881



0 330 660 990 1320 1650 1980 2310 2640 2003 1500 1000 500 0

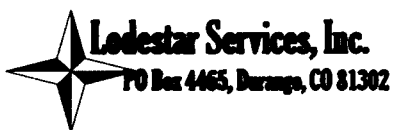
Scale 4 inches equal 1 mile

This is to certify that the above plat was prepared from field notes of actual surveys  
 made by me or under my supervision and that the same are true and correct to the best  
 of my knowledge and belief.

Date Surveyed **November 5, 1964**

*James P. Leese*  
 Registered Professional Engineer and/or Land Surveyor

Farmington, New Mexico



**Pit Permit  
Siting Criteria  
Information Sheet**

Client:	XTO Energy
Project:	Pit Permits
Revised:	4-Dec-08
Prepared by:	Brooke Herb

API#: 3004513295

Name: QUINE GAS COM #1

Depth to groundwater: < 50'

Distance to closest continuously flowing watercourse: 609' NW of the Animas River

Distance to closest significant watercourse, lakebed, playa lake, or sinkhole: 2420' E of Hood Arroyo

Permanent residence, school, hospital, institution or church within 300': Yes - 300' W of Permanent Residence

Domestic fresh water well or spring within 500': No

Any other fresh water well or spring within 1000': Yes - 670' S of iWaters well SJ03235; 816' SE of SJ03725

Within incorporated municipal boundaries: Yes - Farmington

Within defined municipal fresh water well field: No

Wetland within 500': No

Within unstable area: No

Within 100 year flood plain: No FEMA data in city limits

USPLSS: T30N,R12W,S31P

Lat/Long: 36.76519, -108.1329

Geologic formation: Nacimiento Formation

Soil Type: Entisols

Annual Precipitation: 8.21 inches (Farmington)

Precipitation Notes: no significant precip events

Attached Documents: Groundwater report and Data; FEMA Flood Zone Map  
Aerial Photo, Topo Map, Mines Mills and Quarries Map

Mining Activity: 5096' NW of a Materials Pit

**Additional Notes:**

Adjusted Township and Range from 30N, 12W, 31I to 30N, 12W, 31P to match latitude/ longitude coordinates

## **QUINE GAS COM #1 Below Ground Tank Siting Criteria and Closure Plan**

### **Well Site Location**

Legals: T30N, R12W, Section 31, Quarter Section P

Latitude/Longitude: approximately 36.76519, -108.1329

County: San Juan County, NM

General Description: near Animas River

### **General Geology and Hydrology**

The San Juan Basin is a typical Rocky Mountain basin with a gently dipping southern flank and a steeply dipping northern flank. Asymmetrically layered Tertiary sandstones and shales, along with Quaternary alluvial deposits dominate surficial geology (Dane and Bachman, 1965). The proposed below ground tank location will be located on the flanks of the Farmington Glade between Aztec and La Plata, New Mexico. Within the Farmington Glade, the Tertiary Nacimiento Formation is exposed, along with Quaternary alluvial and aeolian sands surrounding the center of the wash.

Cretaceous and Tertiary sandstones, as well as Quaternary alluvial deposits serve as the primary aquifers in the San Juan basin (Stone et al., 1983). In most of the proposed area, the Nacimiento Formation lies at the surface. Thickness of the Nacimiento ranges from 418 to 2232 feet (Stone et al., 1983). Aquifers within the coarser and continuous sandstone bodies of the Nacimiento Formation are between 0 and 1000' deep in this section of the basin (Stone et al., 1983). Groundwater within these aquifers flows toward the nearby San Juan River and its tributaries.

The prominent soil type at the proposed site is entisols, which are defined as soils that do not show any profile development. Soils are basically unaltered from their parent rock. Miles of arroyos, washes and intermittent streams exist as part of the drainage network towards the La Plata River ([www.emnrd.state.nm.us](http://www.emnrd.state.nm.us)). These features often cut into soil and other unconsolidated materials, contributing to sedimentation downstream. The sudden influx of water from storm events easily erodes soils that cover the area.

The climate of the region is arid, averaging just over 8 inches of rainfall annually. As is typical of the southwestern United States monsoonal weather patterns, most precipitation falls from August through October. The heaviest rainfall occurs in the summer in isolated, intense cloudbursts. November through June is relatively dry. Snow generally falls from December to mid-February and averages less than one-half inch in depth. However, most recharge occurs during the winter months during snowmelt periods from the upper elevations (Western Regional Climate Center [www.wrcc.dri.edu](http://www.wrcc.dri.edu)).

The predominant vegetation is sagebrush and grasses with a more restricted pinon-juniper association (Dick-Peddie, 1993).

### **Site Specific Hydrogeology**

Depth to groundwater is estimated to be less than 50 feet. This estimation is based on data from Stone and others, 1983 and depth to groundwater data published on the New Mexico State Engineer's iWaters Database website. Local topography and proximity to surface hydrologic features are also taken into consideration.

Local aquifers include sandstones within the Nacimiento Formation, which ranges from 0 to 1000 feet deep in this area, as well as shallow aquifers within Quaternary alluvial deposits (Stone et al., 1983). The 1000-foot depth range for Nacimiento aquifers covers an area over 20 miles wide, and depth decreases towards the margin of the San Juan Basin. The site in question is more centrally located, and depth to the aquifer is expected to be closer to 1000 feet. It is well known that groundwater close to the Animas River can be shallow, as the Quaternary deposits near the river itself form shallow aquifers. The proposed site is situated 609 feet to the northwest of the Animas River, and is approximately 6 feet higher in elevation (Google Earth).

Groundwater data available from the NM State Engineer's iWaters Database for wells near the proposed site are attached. A map showing the location of wells in reference to the proposed pit location is also included. Pinpoints show locations of wells and the labels for each pinpoint indicate depth to groundwater in feet. Depth to groundwater within the nearby wells ranges from 9 to 40 feet below ground surface. The closest well is situated 670 feet to the northeast of the proposed site, and is 10 feet higher in topographic elevation (Google Earth). Depth to groundwater within the well is 40 feet below ground surface. The close proximity to the Animas River suggests that depth to groundwater at the proposed site is less than 50 feet below ground surface.

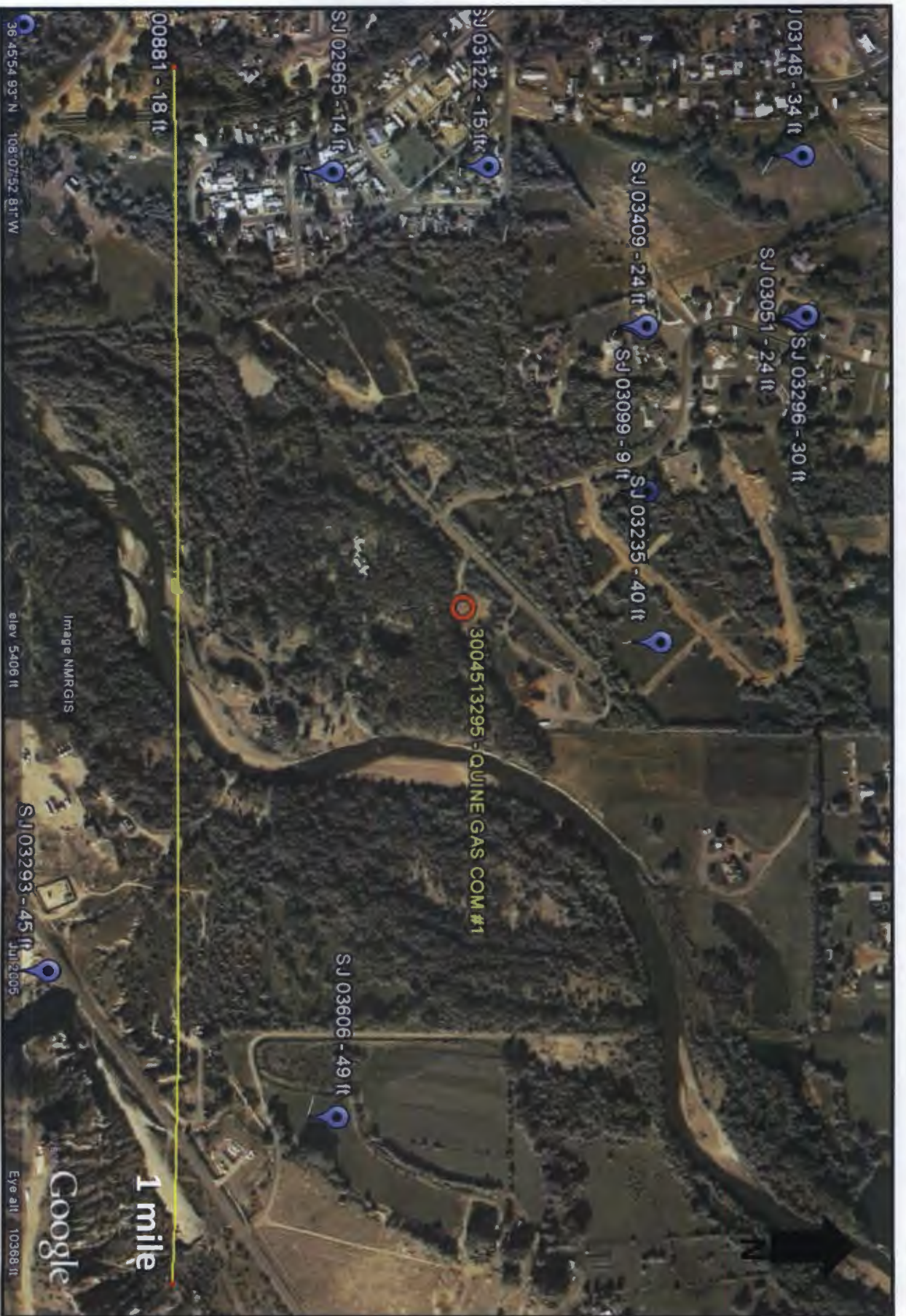


5 miles

Lodestar Services, Inc  
PO Box 4465  
Durango, CO 81302

QUINE GAS COM #1  
T30N, R12W, S31P  
San Juan County, NM

Topographic Map



Lodestar Services, Inc  
PO Box 4465  
Durango, CO 81302

QUINE GAS COM #1  
T30N, R12W, S31P  
San Juan County, NM

iWaters Groundwater  
Data Map

**New Mexico Office of the State Engineer**  
**POD Reports and Downloads**

Township:  30N Range:  12W Sections:  28,29,30,31,32,33

NAD27 X:  Y:  Zone:  Search Radius:

County:  Basin:  Number:  Suffix:

Owner Name: (First)  (Last)  Non-Domestic ☐ Domestic ☐ All ☐

POD / Surface Data Report(Avg Depth to Water ReportWater Column Report

**WATER COLUMN REPORT 10/14/2008**

(quarters are 1=NW 2=NE 3=SW 4=SE)  
(quarters are biggest to smallest)

POD Number	Tws	Rng	Sec	q	q	q	Zone	X	Y	Depth Well	Depth Water	Water Column	Water (in feet)
SJ 00282	30N	12W	28							84	52	32	
SJ 00122 CLM283728	30N	12W	28	1	3					126	61	65	
SJ 01309	30N	12W	28	1	3					55	32	23	
SJ 00122	30N	12W	28	1	3	2				80	40	40	
SJ 02142	30N	12W	28	1	4	3				55	35	20	
SJ 01275	30N	12W	28	1	4	3				30	5	25	
SJ 02016	30N	12W	28	2	1					120	56	64	
SJ 01129	30N	12W	28	2	1	2				40	10	30	
SJ 03702	30N	12W	28	2	2	3				30	5	25	
SJ 03702 POD1	30N	12W	28	2	2	3				30	5	25	
SJ 00346	30N	12W	28	2	3	1				41	15	26	
SJ 03796 POD1	30N	12W	28	3	1	2			264258	2104657	5	17	
SJ 02571	30N	12W	28	4	1	3				21	6	15	
SJ 03096	30N	12W	28	4	3	4				125			

SJ 00669	30N	12W	28	4	4	70	30	40
SJ 02833	30N	12W	28	4	4	50		
SJ 03383	30N	12W	28	4	4	50	20	30
SJ 03688	30N	12W	28	4	4	50	25	25
SJ 03688 POD1	30N	12W	28	4	4	50	25	25
SJ 02022	30N	12W	29	3	3	297	100	197
SJ 03187	30N	12W	29	3	1	160	29	131
SJ 02476	30N	12W	29	3	2	225	185	40
SJ 03280	30N	12W	29	3	2	100		
SJ 03358	30N	12W	29	3	3	100	60	40
SJ 03278	30N	12W	29	3	3	120	40	80
SJ 03279	30N	12W	29	3	3	120	60	60
SJ 00536	30N	12W	29	4	1	50	28	22
SJ 02309	30N	12W	29	4	1	50	27	23
SJ 02306	30N	12W	29	4	4	44	25	19
SJ 01052	30N	12W	29	4	4	39	11	28
SJ 01006	30N	12W	30	1	1	38	16	22
SJ 01314	30N	12W	30	1	1	240	220	20
SJ 01637	30N	12W	30	3	3	127	52	75
SJ 01632	30N	12W	30	3	4	175	87	88
SJ 02219	30N	12W	30	4	4	240	80	160
SJ 03361	30N	12W	31	1	1	150		
SJ 03365	30N	12W	31	2	3	50		
SJ 03132	30N	12W	31	2	3	58	32	26
SJ 03145	30N	12W	31	2	3	49	32	17
SJ 00223	30N	12W	31	2	4	63	22	41
SJ 00170	30N	12W	31	2	4	45	20	25
SJ 03236	30N	12W	31	2	4	63	15	48
SJ 03174	30N	12W	31	2	4	60	46	14
SJ 03331	30N	12W	31	2	4	67	18	49
SJ 03161	30N	12W	31	2	4	62	47	15
SJ 03252	30N	12W	31	2	4	42	11	31
SJ 03237	30N	12W	31	2	4	70		
SJ 03150	30N	12W	31	2	4	53	30	23
SJ 01236	30N	12W	31	3	2	50	38	12
SJ 02815	30N	12W	31	3	4	30		
SJ 03148	30N	12W	31	4	1	56	34	22
SJ 03051	30N	12W	31	4	1	40	24	16
SJ 03147	30N	12W	31	4	1	49	28	21
SJ 02862	30N	12W	31	4	1	33	19	14

SJ 02867	30N	12W	31	4	1	2	28	14	14
SJ 02792	30N	12W	31	4	1	2	49	30	19
SJ 03296	30N	12W	31	4	1	2	56	30	26
SJ 03409	30N	12W	31	4	1	4	44	24	20
SJ 03099	30N	12W	31	4	1	4	34	9	25
SJ 02877	30N	12W	31	4	1	4	31	17	14
SJ 03602	30N	12W	31	4	1	4	31	7	24
SJ 03725 POD1	30N	12W	31	4	2	3	17	17	
SJ 03235	30N	12W	31	4	2	4	70	40	30
SJ 03122	30N	12W	31	4	3	1	29	15	14
SJ 02965	30N	12W	31	4	3	3	35	14	21
SJ 02213	30N	12W	32	1			33	13	20
SJ 02208	30N	12W	32	1			25	4	21
SJ 02166	30N	12W	32	1			33	10	23
SJ 02207	30N	12W	32	1			25	4	21
SJ 01664	30N	12W	32	1	1	1	32	16	16
SJ 03516	30N	12W	32	1	1	2	70	35	35
SJ 03523	30N	12W	32	1	1	2	77	42	35
SJ 03610	30N	12W	32	1	1	2	80	50	30
SJ 03517	30N	12W	32	1	1	2	60	30	30
SJ 03520	30N	12W	32	1	1	4	55	25	30
SJ 03522	30N	12W	32	1	1	4	70	35	35
SJ 03515	30N	12W	32	1	1	4	70	35	35
SJ 03521	30N	12W	32	1	1	4	55	25	30
SJ 03514	30N	12W	32	1	1	4	70	35	35
SJ 03519	30N	12W	32	1	1	4	55	25	30
SJ 03518	30N	12W	32	1	1	4	60	30	30
SJ 03513	30N	12W	32	1	1	4	60	30	30
SJ 03512	30N	12W	32	1	1	4	60	30	30
SJ 03511	30N	12W	32	1	1	4	60	30	30
SJ 03217	30N	12W	32	1	2	3	42	12	30
SJ 03629	30N	12W	32	1	2	3	60	20	40
SJ 03494	30N	12W	32	1	2	3	50		
SJ 03221	30N	12W	32	1	3		50	12	36
SJ 02246	30N	12W	32	1	3		19	9	10
SJ 02117	30N	12W	32	1	3		40	19	21
SJ 02214 X	30N	12W	32	1	3		31	15	16
SJ 02214	30N	12W	32	1	3		30	12	16
SJ 02211	30N	12W	32	1	3		25	11	14
SJ 02220	30N	12W	32	1	3		23	10	13

SJ 01832	30N	12W	32	1	3				41	10	31
SJ 02286	30N	12W	32	1	3				40	18	22
SJ 02262	30N	12W	32	1	3						
SJ 02177	30N	12W	32	1	3				35	11	24
SJ 02311	30N	12W	32	1	3				34	11	23
SJ 02982	30N	12W	32	1	3	1			36	10	26
SJ 03613	30N	12W	32	1	3	1			70	20	50
SJ 02942	30N	12W	32	1	3	1			35	19	16
SJ 03009	30N	12W	32	1	3	2			37	10	27
SJ 03190	30N	12W	32	1	3	3			25	8	17
SJ 03748 POD1	30N	12W	32	1	3	3					
SJ 02371	30N	12W	32	1	3	4					
SJ 00190	30N	12W	32	1	4				31	11	20
SJ 02239	30N	12W	32	2	1	2			34	15	19
SJ 03207	30N	12W	32	2	3	2			65	17	48
SJ 03206	30N	12W	32	2	3	2			60	30	30
SJ 00116	30N	12W	32	2	3	3			60		
SJ 00116 S	30N	12W	32	2	3	3			25		
SJ 03606	30N	12W	32	3	4	3			25		
SJ 02908	30N	12W	32	4	2	4			67	49	18
SJ 03779 POD1	30N	12W	32	4	2	4			50		
SJ 02804	30N	12W	32	4	3	4			26	8	18
SJ 00519	30N	12W	32	4	4	3			50		
SJ 03349	30N	12W	33	1	2	1			24	12	12
SJ 03143	30N	12W	33	1	2	3			55		
SJ 03110	30N	12W	33	1	2	4			97	60	37
SJ 01174	30N	12W	33	1	3				320	54	266
SJ 01390	30N	12W	33	1	3				36	19	17
SJ 03143 POD2	30N	12W	33	1	4	2			40	22	18
SJ 03133	30N	12W	33	1	4	4			40	10	30
SJ 00605	30N	12W	33	2	1	2			39	20	19
SJ 00606	30N	12W	33	2	1	2			72	35	37
SJ 02981	30N	12W	33	2	1	2			104	35	69
SJ 01072	30N	12W	33	2	2				100	60	40
SJ 01036	30N	12W	33	2	2				110	50	60
SJ 01045	30N	12W	33	2	2	1			105	70	35
SJ 03140	30N	12W	33	2	3	1			73	45	28
SJ 00474	30N	12W	33	2	3	3			42	20	22
SJ 03614	30N	12W	33	2	3	3			104	60	44
SJ 01256	30N	12W	33	2	4				42	33	9
									250	160	90

263644 2098600

<u>SJ 00444</u>	30N	12W	33	2	4	66	34	32
<u>SJ 00505</u>	30N	12W	33	2	4	85	45	40
<u>SJ 01286</u>	30N	12W	33	3		265	227	38
<u>SJ 01118</u>	30N	12W	33	3	2	32	10	22
<u>SJ 00613</u>	30N	12W	33	3	2	147	95	52
<u>SJ 01633</u>	30N	12W	33	3	3	280	240	40
<u>SJ 02212</u>	30N	12W	33	3	3	320	269	51
<u>SJ 00447</u>	30N	12W	33	4	1	104	65	39
<u>SJ 00622</u>	30N	12W	33	4	1	76	41	35
<u>SJ 00590</u>	30N	12W	33	4	1	98	60	38
<u>SJ 00986</u>	30N	12W	33	4	2	104	80	24
<u>SJ 01231</u>	30N	12W	33	4	2	246	161	85

Record Count: 146

**New Mexico Office of the State Engineer**  
**POD Reports and Downloads**

Township: 30N Range: 13W Sections: 26,27,35

**POD / Surface Data ReportAvg Depth to Water ReportWater Column Report**

**WATER COLUMN REPORT 10/02/2008**

(quarters are 1=NW 2=NE 3=SW 4=SE)  
(quarters are biggest to smallest)

POD Number	Tws	Rng	Sec	q	q	q	q	Zone	X	Y	Depth Well	Depth Water	Water Column	Water (in feet)
<b>SJ 01736</b>	30N	13W	26	1	4	3					332	300	32	
<b>SJ 01119</b>	30N	13W	26	1	4	4					370	300	70	
<b>SJ 01454</b>	30N	13W	26	3	1	1					400	350	50	
<b>SJ 01117</b>	30N	13W	26	3	1	4					360	300	60	
<b>SJ 02225</b>	30N	13W	26	3	2	2					339	300	39	
<b>SJ 01895</b>	30N	13W	26	3	2	4					370	250	120	
<b>SJ 01181</b>	30N	13W	26	3	3	3					257	230	27	
<b>SJ 01503</b>	30N	13W	26	4	2	2					310	260	50	
<b>SJ 02674</b>	30N	13W	27	3	4	4					270	250	20	
<b>SJ 02391</b>	30N	13W	35	1	1	1					260	200	60	

Record Count: 10



Lodestar Services, Inc  
PO Box 4465  
Durango, CO 81302

QUINE GAS COM #1  
T30N, R12W, S31P  
San Juan County, NM

Aerial Photograph



Lodestar Services, Inc  
PO Box 4465  
Durango, CO 81302

QUINE GAS COM #1  
T30N, R12W, S31P  
San Juan County, NM

Mines, Mills, and  
Quarries Map

**XTO Energy Inc.**  
**San Juan Basin (Northwest New Mexico)**  
**General Design and Construction Plan**  
**For Below-Grade Tanks**

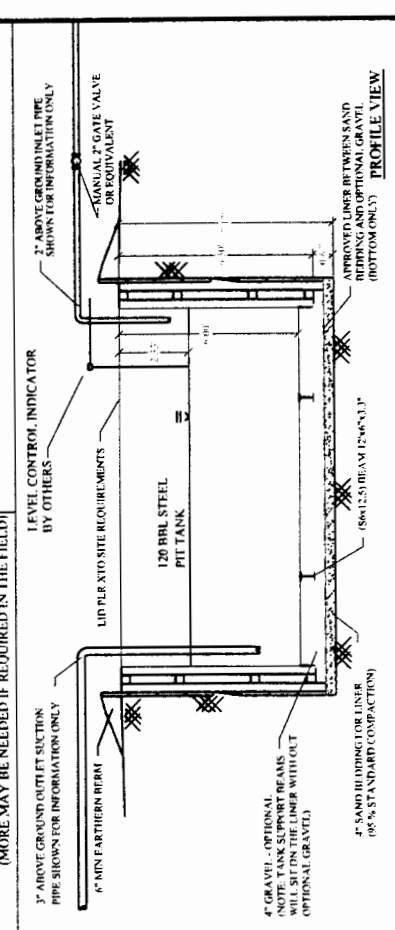
In accordance with Rule 19.15.17.11 NMAC the following information describes the design and construction of below-grade tanks on XTO Energy Inc. (XTO) locations. This is XTO's standard procedure for all below-grade tanks. A separate plan will be submitted for any below-grade tank which does not conform to this plan.

**General Plan**

1. XTO will design and construct below-grade tanks to contain liquids and solids and prevent contamination of fresh water and protect public health and environment.
2. XTO will post a well sign, in compliance with 19.15.3.103 NMAC, on the existing well site operated by XTO where the existing below-grade tank is located. The sign will list the Operator on record as the operator, the location of the well site by unit letter, section, township, range, and emergency telephone numbers.
3. XTO is requesting approval of an alternative fencing to be used on below-grade tank locations. Below-grade tank locations will be fenced utilizing 48" steel mesh field-fence (hogwire) with pipe railing along the top. A 6' chain link fence will be utilized around the well pad if the well site is within a city limits or ¼ mile of a permanent residence, school, hospital, institution or church. Below-grade tanks located within 1000' of a permanent residence, school, hospital, institution or church will be fenced by 6' chain link fence with at least two strands of barbed wire at the top. All gates associated with below-grade tanks will remain closed and locked when responsible individuals are not on site.
4. XTO shall construct below-grade tanks with an expanded metal covering or solid vaulted top on the top of the below-grade tank.
5. XTO will ensure that below-grade tanks are constructed of materials resistant to the below-grade tank's particular contents and resistant to damage from sunlight. Tanks will be constructed of A36 carbon steel with 3/16" sides and ¼" bottom. (See attached drawing).
6. The below-grade tank system will have a properly constructed foundation consisting of a level base free of rocks, debris, sharp edges or irregularities to prevent punctures, cracks or indentations of the liner or tank bottom. Sand bedding (4") will be placed on top of a level foundation to ensure prevention of punctures, cracks or indentations of the liner or tank bottom.
7. XTO will construct a berm and/or diversion ditch in a manner that prevents the collection of surface water run-on. Below-grade tanks will be equipped with automatic high level shut-off devices as well as manually operated shut-off valves. (See attached drawing).
8. XTO will construct and use below-grade tanks that do not have double walls. The below-grade tank sidewalls will be open for visual inspection for leaks. The sidewalls of the cellar will be constructed with 2" X 12" pine sidewalls and 4" X 4" pine brace posts. The below-grade tank

bottom will be elevated a minimum of 6" above the underlying ground surface and the below-grade tank will be underlain with a geomembrane liner to divert leaked liquid to a location that can be visually inspected. (See attached drawing).

9. XTO will equip below-grade tanks designed in this manner with a properly functioning automatic high-level shut-off control device and manual controls to prevent overflows. (See attached drawing).
10. XTO will demonstrate to the OCD that the geomembrane liner complies with the specifications of Subparagraph (a) of Paragraph (4) of Subsection I of 19.15.17.11 NMAC and obtain approval from OCD prior to the installation of the design. The geomembrane liner shall have a hydraulic conductivity no greater than  $1 \times 10^{-9}$  cm/sec. The geomembrane liner shall be composed of an impervious, synthetic material that is resistant to petroleum hydrocarbons, salts and acidics and alkaline solutions. The liner material shall be resistant to ultraviolet light. Liner compatibility shall comply with EPA SW-846 method 9090A. (See attached drawing).
11. The general specifications for design and construction are attached.



<p><b>NOTE</b></p> <p>DRAFTED PER XTO DESIGN.</p> <p>HIGH LEVEL SHUT OFF WILL BE SET AT 28" BENEATH TOP OF TANK (AT 73.95 BBL @ SHUT OFF).</p> <p>OUTER EDGE OF LINER WILL BE LEFT OPEN AND UNOBSERVED TO ALLOW FOR VISUAL INSPECTION OF LINER FOR EVIDENCE OF SPILLS</p> <p>ADJUST DIMENSIONS AS NEED TO FIELD FIT TANK IF DIFFERENT THAN SHOWN, IF REQUIRED.</p>	<table border="1" style="width: 100%; border-collapse: collapse;"> <tr> <td colspan="2" style="padding: 2px;">OWNER / OPERATOR: <b>XTO ENERGY</b></td> <td colspan="2" style="padding: 2px; text-align: center;">TYPICAL DESIGN 120 BBL PIT TANK CONTAINMENT</td> </tr> <tr> <td colspan="2" style="padding: 2px;">PROJECT NUMBER #0012</td> <td colspan="2" style="padding: 2px;">DRAWING NUMBER XTOPTANK</td> </tr> <tr> <td colspan="2" style="padding: 2px;"></td> <td colspan="2" style="padding: 2px;">SCALE AS SHOWN</td> </tr> <tr> <td colspan="2" style="padding: 2px;"></td> <td colspan="2" style="padding: 2px; text-align: center;"> </td> </tr> <tr> <td colspan="2" style="padding: 2px;"></td> <td colspan="2" style="padding: 2px; text-align: right;"> <div style="display: flex; align-items: center;"> <div style="writing-mode: vertical-rl; transform: rotate(180deg); font-size: 8px; margin-right: 5px;">XTO ENERGY</div> </div> </td> </tr> </table>	OWNER / OPERATOR: <b>XTO ENERGY</b>		TYPICAL DESIGN 120 BBL PIT TANK CONTAINMENT		PROJECT NUMBER #0012		DRAWING NUMBER XTOPTANK				SCALE AS SHOWN								<div style="display: flex; align-items: center;"> <div style="writing-mode: vertical-rl; transform: rotate(180deg); font-size: 8px; margin-right: 5px;">XTO ENERGY</div> </div>	
OWNER / OPERATOR: <b>XTO ENERGY</b>		TYPICAL DESIGN 120 BBL PIT TANK CONTAINMENT																			
PROJECT NUMBER #0012		DRAWING NUMBER XTOPTANK																			
		SCALE AS SHOWN																			
		<div style="display: flex; align-items: center;"> <div style="writing-mode: vertical-rl; transform: rotate(180deg); font-size: 8px; margin-right: 5px;">XTO ENERGY</div> </div>																			

**XTO Energy Inc.**  
**San Juan Basin (Northwest New Mexico)**  
**General Maintenance and Operating Plan**  
**For Below-Grade Tanks**

In accordance with Rule 19.15.17.12 NMAC the following information describes the operation and maintenance of below-grade tanks on XTO Energy Inc. (XTO) locations. This is XTO's standard procedure for all below-grade tanks. A separate plan will be submitted for any below-grade tank which does not conform to this plan.

**General Plan**

1. XTO will operate and maintain below-grade tanks to contain liquids and solids, maintain the integrity of the liner and secondary containment system, prevent contamination of fresh water and protect public health and the environment. Fluid levels will be monitored weekly and high levels will be removed as necessary. Monthly inspections will be conducted to monitor integrity of below-grade tank systems and below-grade tanks will be equipped with automatic high-level shut-off devices.
2. XTO will not allow below-grade tanks to overflow and will use berms and/or diversion ditch to prevent surface run on to enter the below-grade tank. Below-grade tanks will be equipped with automatic high-level shut-off control devices as well as manually operated shut-off valves. See attached drawing for vault design and placement of diversion berms and shut-off devices.
3. XTO will continuously remove any visible or measurable layer of oil from the fluid surface of below-grade tanks in order to prevent significant accumulation of oil.
4. XTO will inspect the below-grade tank monthly and maintain written records for five years. Monthly inspections will consist of documenting the following: (see attached template),
  - Well Name
  - API #
  - Sec., Twn., Rng.
  - XTO Inspector's name
  - Inspection date and time
  - Visible tears in liner
  - Visible signs of tank overflow
  - Collection of surface run on
  - Visible layer of oil
  - Visible signs of tank leak
  - Estimated freeboard
5. XTO will maintain adequate freeboard to prevent over topping of the below-grade tank. High level shut-off devices control the freeboard at an average of 28" beneath the top of the tank.
6. XTO will not discharge into or store any hazardous waste in any below-grade tank.
7. If a below-grade tank develops a leak, or if any penetration of a below-grade tank occurs below the liquids surface, XTO will remove all liquids above the damage or leak line within 48 hours,

XTO Energy Inc.  
San Juan Basin (Northwest New Mexico)  
General Maintenance and Operating Plan  
For Below-Grade Tanks  
Page 2

notify the appropriate division district office within 48 hours of the discovery and repair the damage or replace the below-grade tank. If an existing below-grade tank does not meet current requirements of Paragraphs 1-4 of Subsection I of 19.15.17.11 NMAC the tank will be modified or retrofitted to comply. If compliance can not be achieved XTO will implement the approved closure plan.

# MONTHLY BELOW GRADE TANK INSPECTION FORM

**Well Name:**

**API No.:**

## Legals

## Sec:

**Township:**

**Range:**

Range:

[illegible]

**Notes:**

**Provide Detailed Description:**

**Misc:**

**XTO Energy Inc.**  
**San Juan Basin (Northwest New Mexico)**  
**General Closure Plan**  
**For Below-Grade Tanks**

In accordance with Rule 19.15.17.13 NMAC the following information describes the closure requirements of below-grade tanks on XTO Energy Inc. (XTO) locations. This is XTO's standard procedure for all below-grade tanks. A separate plan will be submitted for any below-grade tank which does not conform to this plan.

**General Plan**

1. XTO will close below-grade tanks within the time periods provided in 19.15.17.13 NMAC, or by an earlier date that the division requires because of imminent danger to fresh water, public health or the environment.
2. XTO will close a below-grade tank that does not meet the requirements of Paragraphs (1) through (4) of Subsection I of 19.15.17.11 NMAC or is not included in Paragraph (5) of Subsection I of 19.15.17.11 NMAC within five years after June 16, 2008, if not retrofitted to comply with Paragraphs (1) through (4) of Subsection I of 19.15.17.11 NMAC.
3. XTO will close a permitted below-grade tank within 60 days of cessation of the below-grade tank's operation or as required by the transitional provisions of Subsection B of 19.15.17.17 NMAC in accordance with a closure plan that the appropriate division district office approves. The closure report will be filed on form C-144.
4. XTO will remove liquids and sludge from below-grade tanks prior to implementing a closure method and will dispose of the liquids and sludge in a division-approved facility. Approved facilities and waste streams include:
  - Envirotech Permit No. NM01-0011 and IEI Permit No. NM 01-0010B
    - Soil contaminated by exempt petroleum hydrocarbons
    - Produced sand, pit sludge and contaminated bottoms from storage of exempt wastes
  - Basin Disposal Permit No. NM01-005
    - Produced water
5. XTO will remove the below-grade tank and dispose of it in a division approved facility or recycle, reuse, or reclaim it in a manner that the appropriate division district office has approved prior to removal. Any associated liners will be removed, properly cleaned and disposed of per 19.15.9.712 NMAC at San Juan County Landfill. Documentation of the final disposition will be included in the closure report.
6. XTO will remove any on-site equipment associated with a below-grade tank unless the equipment is required for some other purpose.
7. XTO will test the soils beneath the below-grade tank to determine whether a release has occurred. At a minimum 5 point composite sample will be collected along with individual grab samples from any area that is wet, discolored or showing other evidence of a release. Samples will be

analyzed for BTEX, TPH and chlorides to demonstrate that the benzene concentration, as determined by EPA SW-846 methods 8021B or 8260B or EPA method that the division approves, does not exceed 0.2 mg/kg; total BTEX concentration, as determined by EPA SW-846 methods 8021B or 8260B or other EPA method that the division approves, does not exceed 50 mg/kg; the TPH concentration, as determined by EPA method 418.1 or other EPA method that the division approves, does not exceed 100mg/kg; and the chloride concentration, as determined by EPA method 300.1 or other EPA method that the division approves, does not exceed 250 mg/kg, or the background concentration, whichever is greater. XTO will notify the division of its results on form C-141.

8. If XTO or the division determines that a release has occurred, XTO will comply with 19.15.3.116 NMAC and 19.15.1.19NMAC as appropriate.
9. If the sampling program demonstrates that a release has not occurred or that any release does not exceed the concentrations specified in Paragraph (4) of Subsection E of 19.15.17.13 NMAC, XTO will backfill the excavation with compacted, non-waste containing, earthen material; construct a division prescribed soil cover; recontour and re-vegetate the site.
10. Notice of Closure operations will be given to the Aztec Division District III office between 72 hours and one week prior to the start of closure activities via email or verbally.  
The notification will include the following:
  - i. Operator's name
  - ii. Well Name and API Number
  - iii. Location by Unit Letter, Section, Township, and Range

The surface owner shall also be notified prior to the implementation of any closure operations of below-grade tanks as per the approved closure plan using certified mail, return receipt requested.

11. Re-contouring of location will match fit, shape, line, form and texture of the surrounding area. Re-shaping will include drainage control, prevent ponding, and prevent erosion. Natural drainages will be unimpeded and water bars and/or silt traps will be placed in areas where needed to prevent erosion on a large scale. Final re-contour shall have a uniform appearance with smooth surface, fitting the natural landscape.
12. A minimum of 4 feet of cover shall be achieved and the cover shall include 1 foot of suitable material to establish vegetation at the site, or the background thickness of topsoil, whichever is greater. Soil cover will be constructed to the site's existing grade and ponding of water and erosion of the cover material will be prevented with drainage control, natural drainages and silt traps where needed.
13. XTO will seed the disturbed areas the first growing season after the operator closes the pit. Seeding will be accomplished via drilling on the contour whenever practical or by other division-approved methods. BLM or Forest Service stipulated seed mixes will be used on federal lands. Vegetative cover will equal 70% of the native perennial vegetative cover (un-impacted) consisting of at least three native plant species, including at least one grass, but not including noxious weeds, and maintain that cover through two successive growing seasons. Repeat seeding or planting will be continued until successful vegetative growth occurs.

XTO Energy Inc.  
San Juan Basin (Northwest New Mexico)  
General Closure Plan  
For Below-Grade Tanks  
Page 3

14. All closure activities will include proper documentation and be available for review upon request and will be submitted in closure report form to OCD within 60 days of closure of the below-grade tank. Closure report will be filed on form C-144 and incorporate the following:
  - i. Proof of closure notice to division and surface owner;
  - ii. Details on capping and covering, where applicable;
  - iii. Inspection reports;
  - iv. Confirmation sampling analytical results;
  - v. Disposal facility name(s) and permit number(s);
  - vi. Soil backfilling and cover installation;
  - vii. Re-vegetation application rates and seeding techniques, (or approved alternative to re-vegetation requirements if applicable);
  - viii. Photo documentation of the site reclamation.

**From:** Lowe, Leonard, EMNRD  
**To:** ["Hixon, Logan"](#)  
**Cc:** [McDaniel, James](#); [Hoekstra, Kurt](#)  
**Subject:** Approved BGT Closure Only-Quine Gas Com 1 (30-045-13295)  
**Date:** Friday, October 03, 2014 11:24:00 AM  
**Attachments:** [Approved C-144 Quine Gas Com # 1, API 30-045-13295 120 bbl.pdf](#)  
**Importance:** High

---

Mr. Hixon,

OCD approves your Closure of 120 BBL Tank at Quine Gas Com # 1, API # 30-045-13295.

See attached Approved C-144.

For Future request please submit only:

The date of box form was submitted.

API #

Name

Volume of BGT requesting closure or modification.

Thank you,

**Leonard Lowe**

Environmental Engineer

[Environmental Bureau]

**Oil Conservation Division**

**Energy Minerals and Natural Resources Department**

1220 South St. Frances

Santa Fe, New Mexico 87004

Office: 505-476-3492

Fax: 505-476-3462

E-mail: [leonard.lowe@state.nm.us](mailto:leonard.lowe@state.nm.us)

Website: <http://www.emnrd.state.nm.us/oed/>

---

**From:** Hixon, Logan [mailto:Logan\_Hixon@xtoenergy.com]

**Sent:** Thursday, October 02, 2014 7:27 AM

**To:** Lowe, Leonard, EMNRD

**Cc:** McDaniel, James; Hoekstra, Kurt

**Subject:** Request for Approved BGT Closure Plan Only-Quine Gas Com 1 (30-045-13295) Submitted January 9, 2009

**Mr. Lowe**

We are requesting an approved below grade tank closure plan only for the following site:

*-Quine Gas Com 1 (API 30-045-13295) located in Section 31 (I), Township 30N, Range 12W, San Juan County, New Mexico.*

The plan according to our records was submitted to your office January 9, 2009.

This BGT is being closed due to plugging and abandoning of the site.

Our construction group is asking to get this done soon, and if possible if we can get the approved permit as soon as possible it would be greatly appreciated. I know you have a lot to take care of so if you are unable to I understand. Thanks for the help Leonard!

Thank you for the help with this matter.

*If you have any questions or concerns do not hesitate to contact me at anytime. Thank you and have a good day!*

*Thank You!*

**XTO ENERGY INC.**, an ExxonMobil subsidiary

Logan Hixon | 72 Suttle Street, Suite J | Durango, CO 81303 | ph: 970-247-7708 | Cell: 505-386-8018

Logan Hixon | 382 CR 3100 | Aztec, NM 87410 | ph: 505-333-3100 | [Logan\\_Hixon@xtoenergy.com](mailto:Logan_Hixon@xtoenergy.com)

*This document may contain information that is privileged, confidential and exempt from disclosure under applicable law. If you are not the intended recipient, you are on notice that any unauthorized disclosure, copying, distribution or taking of any action in reliance on the contents of this document is prohibited.*