

District I
1625 N. French Dr., Hobbs, NM 88240
District II
1301 W. Grand Avenue, Artesia, NM 88210
District III
1000 Rio Brazos Road, Aztec, NM 87410
District IV
1220 S. St. Francis Dr., Santa Fe, NM 87505

State of New Mexico
Energy Minerals and Natural Resources
Department
Oil Conservation Division
1220 South St. Francis Dr.
Santa Fe, NM 87505

Form C-144
July 21, 2008

For temporary pits, closed-loop systems, and below-grade tanks, submit to the appropriate NMOC District Office.
For permanent pits and exceptions submit to the Santa Fe Environmental Bureau office and provide a copy to the appropriate NMOC District Office.

2008 SEP 24 AM 11:38

**Pit, Closed-Loop System, Below-Grade Tank, or
Proposed Alternative Method Permit or Closure Plan Application**

Type of action: ☒ Permit of a pit, closed-loop system, below-grade tank, or proposed alternative method
Existing BGT ☐ Closure of a pit, closed-loop system, below-grade tank, or proposed alternative method
☐ Modification to an existing permit
☐ Closure plan only submitted for an existing permitted or non-permitted pit, closed-loop system, below-grade tank, or proposed alternative method

Instructions: Please submit one application (Form C-144) per individual pit, closed-loop system, below-grade tank or alternative request

Please be advised that approval of this request does not relieve the operator of liability should operations result in pollution of surface water, ground water or the environment. Nor does approval relieve the operator of its responsibility to comply with any other applicable governmental authority's rules, regulations or ordinances.

1.
Operator: XTO Energy, Inc. OGRID #: 5380
Address: #382 County Road 3100, Aztec, NM 87410
Facility or well name: FEE #7
API Number: 30-045-24016 OCD Permit Number: _____
U/L or Qtr/Qtr H Section 07 Township 30N Range 11W County: San Juan
Center of Proposed Design: Latitude 36.82997 Longitude 108.02504 NAD: ☐ 1927 ☒ 1983
Surface Owner: ☒ Federal ☐ State ☐ Private ☐ Tribal Trust or Indian Allotment

2.
☐ **Pit:** Subsection F or G of 19.15.17.11 NMAC
Temporary: ☐ Drilling ☐ Workover
☐ Permanent ☐ Emergency ☐ Cavitation ☐ P&A
☐ Lined ☐ Unlined Liner type: Thickness _____ mil ☐ LLDPE ☐ HDPE ☐ PVC ☐ Other _____
☐ String-Reinforced
Liner Seams: ☐ Welded ☐ Factory ☐ Other _____ Volume: _____ bbl Dimensions: L _____ x W _____ x D _____

3.
☐ **Closed-loop System:** Subsection H of 19.15.17.11 NMAC
Type of Operation: ☐ P&A ☐ Drilling a new well ☐ Workover or Drilling (Applies to activities which require prior approval of a permit or notice of intent)
☐ Drying Pad ☐ Above Ground Steel Tanks ☐ Haul-off Bins ☐ Other _____
☐ Lined ☐ Unlined Liner type: Thickness _____ mil ☐ LLDPE ☐ HDPE ☐ PVC ☐ Other _____
Liner Seams: ☐ Welded ☐ Factory ☐ Other _____

4.
☒ **Below-grade tank:** Subsection I of 19.15.17.11 NMAC
Volume: 120 bbl Type of fluid: Produced Water
Tank Construction material: Steel
☐ Secondary containment with leak detection ☐ Visible sidewalls, liner, 6-inch lift and automatic overflow shut-off
☐ Visible sidewalls and liner ☐ Visible sidewalls only ☒ Other Visible sidewalls, vaulted, automatic high-level shut off, no liner
Liner type: Thickness _____ mil ☐ HDPE ☐ PVC ☐ Other _____

5.
☐ **Alternative Method:**
Submittal of an exception request is required. Exceptions must be submitted to the Santa Fe Environmental Bureau office for consideration of approval.

6.

Fencing: Subsection D of 19.15.17.11 NMAC (*Applies to permanent pits, temporary pits, and below-grade tanks*)

- ☐ Chain link, six feet in height, two strands of barbed wire at top (*Required if located within 1000 feet of a permanent residence, school, hospital, institution or church*)
- ☐ Four foot height, four strands of barbed wire evenly spaced between one and four feet
- ☒ Alternate. Please specify Four foot height, steel mesh field fence (hogwire) with pipe top railing

7.

Netting: Subsection E of 19.15.17.11 NMAC (*Applies to permanent pits and permanent open top tanks*)

- ☐ Screen ☐ Netting ☒ Other Expanded metal or solid vaulted top
- ☐ Monthly inspections (If netting or screening is not physically feasible)

8.

Signs: Subsection C of 19.15.17.11 NMAC

- ☐ 12"x 24", 2" lettering, providing Operator's name, site location, and emergency telephone numbers
- ☒ Signed in compliance with 19.15.3.103 NMAC

9.

Administrative Approvals and Exceptions:

Justifications and/or demonstrations of equivalency are required. Please refer to 19.15.17 NMAC for guidance.

Please check a box if one or more of the following is requested, if not leave blank:

- ☐ Administrative approval(s): Requests must be submitted to the appropriate division district or the Santa Fe Environmental Bureau office for consideration of approval.
- ☐ Exception(s): Requests must be submitted to the Santa Fe Environmental Bureau office for consideration of approval.

10.

Siting Criteria (regarding permitting): 19.15.17.10 NMAC

Instructions: The applicant must demonstrate compliance for each siting criteria below in the application. Recommendations of acceptable source material are provided below. Requests regarding changes to certain siting criteria may require administrative approval from the appropriate district office or may be considered an exception which must be submitted to the Santa Fe Environmental Bureau office for consideration of approval. Applicant must attach justification for request. Please refer to 19.15.17.10 NMAC for guidance. Siting criteria does not apply to drying pads or above-grade tanks associated with a closed-loop system.

Ground water is less than 50 feet below the bottom of the temporary pit, permanent pit, or below-grade tank. - NM Office of the State Engineer - iWATERS database search; USGS; Data obtained from nearby wells	<input checked="" type="checkbox"/> Yes <input type="checkbox"/> No
Within 300 feet of a continuously flowing watercourse, or 200 feet of any other significant watercourse or lakebed, sinkhole, or playa lake (measured from the ordinary high-water mark). - Topographic map; Visual inspection (certification) of the proposed site	<input type="checkbox"/> Yes <input checked="" type="checkbox"/> No
Within 300 feet from a permanent residence, school, hospital, institution, or church in existence at the time of initial application. (Applies to temporary, emergency, or cavitation pits and below-grade tanks) - Visual inspection (certification) of the proposed site; Aerial photo; Satellite image	<input type="checkbox"/> Yes <input checked="" type="checkbox"/> No <input type="checkbox"/> NA
Within 1000 feet from a permanent residence, school, hospital, institution, or church in existence at the time of initial application. (Applies to permanent pits) - Visual inspection (certification) of the proposed site; Aerial photo; Satellite image	<input type="checkbox"/> Yes <input type="checkbox"/> No <input checked="" type="checkbox"/> NA
Within 500 horizontal feet of a private, domestic fresh water well or spring that less than five households use for domestic or stock watering purposes, or within 1000 horizontal feet of any other fresh water well or spring, in existence at the time of initial application. - NM Office of the State Engineer - iWATERS database search; Visual inspection (certification) of the proposed site	<input checked="" type="checkbox"/> Yes <input type="checkbox"/> No
Within incorporated municipal boundaries or within a defined municipal fresh water well field covered under a municipal ordinance adopted pursuant to NMSA 1978, Section 3-27-3, as amended. - Written confirmation or verification from the municipality; Written approval obtained from the municipality	<input checked="" type="checkbox"/> Yes <input type="checkbox"/> No
Within 500 feet of a wetland. - US Fish and Wildlife Wetland Identification map; Topographic map; Visual inspection (certification) of the proposed site	<input type="checkbox"/> Yes <input checked="" type="checkbox"/> No
Within the area overlying a subsurface mine. - Written confirmation or verification or map from the NM EMNRD-Mining and Mineral Division	<input type="checkbox"/> Yes <input checked="" type="checkbox"/> No
Within an unstable area. - Engineering measures incorporated into the design; NM Bureau of Geology & Mineral Resources; USGS; NM Geological Society; Topographic map	<input type="checkbox"/> Yes <input checked="" type="checkbox"/> No
Within a 100-year floodplain. - FEMA map	<input type="checkbox"/> Yes <input checked="" type="checkbox"/> No

11.

Temporary Pits, Emergency Pits, and Below-grade Tanks Permit Application Attachment Checklist: Subsection B of 19.15.17.9 NMAC**Instructions:** Each of the following items must be attached to the application. Please indicate, by a check mark in the box, that the documents are attached.

- ☒ Hydrogeologic Report (Below-grade Tanks) - based upon the requirements of Paragraph (4) of Subsection B of 19.15.17.9 NMAC
- ☒ Hydrogeologic Data (Temporary and Emergency Pits) - based upon the requirements of Paragraph (2) of Subsection B of 19.15.17.9 NMAC
- ☒ Siting Criteria Compliance Demonstrations - based upon the appropriate requirements of 19.15.17.10 NMAC
- ☒ Design Plan - based upon the appropriate requirements of 19.15.17.11 NMAC
- ☒ Operating and Maintenance Plan - based upon the appropriate requirements of 19.15.17.12 NMAC
- ☒ Closure Plan (Please complete Boxes 14 through 18, if applicable) - based upon the appropriate requirements of Subsection C of 19.15.17.9 NMAC and 19.15.17.13 NMAC

☐ Previously Approved Design (attach copy of design) API Number: _____ or Permit Number: _____

12.

Closed-loop Systems Permit Application Attachment Checklist: Subsection B of 19.15.17.9 NMAC**Instructions:** Each of the following items must be attached to the application. Please indicate, by a check mark in the box, that the documents are attached.

- ☐ Geologic and Hydrogeologic Data (only for on-site closure) - based upon the requirements of Paragraph (3) of Subsection B of 19.15.17.9
- ☐ Siting Criteria Compliance Demonstrations (only for on-site closure) - based upon the appropriate requirements of 19.15.17.10 NMAC
- ☐ Design Plan - based upon the appropriate requirements of 19.15.17.11 NMAC
- ☐ Operating and Maintenance Plan - based upon the appropriate requirements of 19.15.17.12 NMAC
- ☐ Closure Plan (Please complete Boxes 14 through 18, if applicable) - based upon the appropriate requirements of Subsection C of 19.15.17.9 NMAC and 19.15.17.13 NMAC

☐ Previously Approved Design (attach copy of design) API Number: _____

☐ Previously Approved Operating and Maintenance Plan API Number: _____ (Applies only to closed-loop system that use above ground steel tanks or haul-off bins and propose to implement waste removal for closure)

13.

Permanent Pits Permit Application Checklist: Subsection B of 19.15.17.9 NMAC**Instructions:** Each of the following items must be attached to the application. Please indicate, by a check mark in the box, that the documents are attached.

- ☐ Hydrogeologic Report - based upon the requirements of Paragraph (1) of Subsection B of 19.15.17.9 NMAC
- ☐ Siting Criteria Compliance Demonstrations - based upon the appropriate requirements of 19.15.17.10 NMAC
- ☐ Climatological Factors Assessment
- ☐ Certified Engineering Design Plans - based upon the appropriate requirements of 19.15.17.11 NMAC
- ☐ Dike Protection and Structural Integrity Design - based upon the appropriate requirements of 19.15.17.11 NMAC
- ☐ Leak Detection Design - based upon the appropriate requirements of 19.15.17.11 NMAC
- ☐ Liner Specifications and Compatibility Assessment - based upon the appropriate requirements of 19.15.17.11 NMAC
- ☐ Quality Control/Quality Assurance Construction and Installation Plan
- ☐ Operating and Maintenance Plan - based upon the appropriate requirements of 19.15.17.12 NMAC
- ☐ Freeboard and Overtopping Prevention Plan - based upon the appropriate requirements of 19.15.17.11 NMAC
- ☐ Nuisance or Hazardous Odors, including H₂S, Prevention Plan
- ☐ Emergency Response Plan
- ☐ Oil Field Waste Stream Characterization
- ☐ Monitoring and Inspection Plan
- ☐ Erosion Control Plan
- ☐ Closure Plan - based upon the appropriate requirements of Subsection C of 19.15.17.9 NMAC and 19.15.17.13 NMAC

14.

Proposed Closure: 19.15.17.13 NMAC**Instructions:** Please complete the applicable boxes, Boxes 14 through 18, in regards to the proposed closure plan.

Type: ☐ Drilling ☐ Workover ☐ Emergency ☐ Cavitation ☐ P&A ☐ Permanent Pit ☒ Below-grade Tank ☐ Closed-loop System

☐ Alternative

Proposed Closure Method: ☒ Waste Excavation and Removal

☐ Waste Removal (Closed-loop systems only)

☐ On-site Closure Method (Only for temporary pits and closed-loop systems)

☐ In-place Burial ☐ On-site Trench Burial

☐ Alternative Closure Method (Exceptions must be submitted to the Santa Fe Environmental Bureau for consideration)

15.

Waste Excavation and Removal Closure Plan Checklist: (19.15.17.13 NMAC) **Instructions:** Each of the following items must be attached to the closure plan. Please indicate, by a check mark in the box, that the documents are attached.

- ☒ Protocols and Procedures - based upon the appropriate requirements of 19.15.17.13 NMAC
- ☒ Confirmation Sampling Plan (if applicable) - based upon the appropriate requirements of Subsection F of 19.15.17.13 NMAC
- ☒ Disposal Facility Name and Permit Number (for liquids, drilling fluids and drill cuttings)
- ☒ Soil Backfill and Cover Design Specifications - based upon the appropriate requirements of Subsection H of 19.15.17.13 NMAC
- ☒ Re-vegetation Plan - based upon the appropriate requirements of Subsection I of 19.15.17.13 NMAC
- ☒ Site Reclamation Plan - based upon the appropriate requirements of Subsection G of 19.15.17.13 NMAC

16.

Waste Removal Closure For Closed-loop Systems That Utilize Above Ground Steel Tanks or Haul-off Bins Only: (19.15.17.13.D NMAC)

Instructions: Please identify the facility or facilities for the disposal of liquids, drilling fluids and drill cuttings. Use attachment if more than two facilities are required.

Disposal Facility Name: _____ Disposal Facility Permit Number: _____

Disposal Facility Name: _____ Disposal Facility Permit Number: _____

Will any of the proposed closed-loop system operations and associated activities occur on or in areas that *will not* be used for future service and operations?

☐ Yes (If yes, please provide the information below) ☐ No

Required for impacted areas which will not be used for future service and operations:

☐ Soil Backfill and Cover Design Specifications - based upon the appropriate requirements of Subsection H of 19.15.17.13 NMAC

☐ Re-vegetation Plan - based upon the appropriate requirements of Subsection I of 19.15.17.13 NMAC

☐ Site Reclamation Plan - based upon the appropriate requirements of Subsection G of 19.15.17.13 NMAC

17.

Siting Criteria (regarding on-site closure methods only): 19.15.17.10 NMAC

Instructions: Each siting criteria requires a demonstration of compliance in the closure plan. Recommendations of acceptable source material are provided below. Requests regarding changes to certain siting criteria may require administrative approval from the appropriate district office or may be considered an exception which must be submitted to the Santa Fe Environmental Bureau office for consideration of approval. Justifications and/or demonstrations of equivalency are required. Please refer to 19.15.17.10 NMAC for guidance.

Ground water is less than 50 feet below the bottom of the buried waste.

- NM Office of the State Engineer - iWATERS database search; USGS; Data obtained from nearby wells

☐ Yes ☐ No
☐ NA

Ground water is between 50 and 100 feet below the bottom of the buried waste

- NM Office of the State Engineer - iWATERS database search; USGS; Data obtained from nearby wells

☐ Yes ☐ No
☐ NA

Ground water is more than 100 feet below the bottom of the buried waste.

- NM Office of the State Engineer - iWATERS database search; USGS; Data obtained from nearby wells

☐ Yes ☐ No
☐ NA

Within 300 feet of a continuously flowing watercourse, or 200 feet of any other significant watercourse or lakebed, sinkhole, or playa lake (measured from the ordinary high-water mark).

- Topographic map; Visual inspection (certification) of the proposed site

☐ Yes ☐ No

Within 300 feet from a permanent residence, school, hospital, institution, or church in existence at the time of initial application.

- Visual inspection (certification) of the proposed site; Aerial photo; Satellite image

☐ Yes ☐ No

Within 500 horizontal feet of a private, domestic fresh water well or spring that less than five households use for domestic or stock watering purposes, or within 1000 horizontal feet of any other fresh water well or spring, in existence at the time of initial application.

- NM Office of the State Engineer - iWATERS database; Visual inspection (certification) of the proposed site

☐ Yes ☐ No

Within incorporated municipal boundaries or within a defined municipal fresh water well field covered under a municipal ordinance adopted pursuant to NMSA 1978, Section 3-27-3, as amended.

- Written confirmation or verification from the municipality; Written approval obtained from the municipality

☐ Yes ☐ No

Within 500 feet of a wetland.

- US Fish and Wildlife Wetland Identification map; Topographic map; Visual inspection (certification) of the proposed site

☐ Yes ☐ No

Within the area overlying a subsurface mine.

- Written confirmation or verification or map from the NM EMNRD-Mining and Mineral Division

☐ Yes ☐ No

Within an unstable area.

- Engineering measures incorporated into the design; NM Bureau of Geology & Mineral Resources; USGS; NM Geological Society; Topographic map

☐ Yes ☐ No

Within a 100-year floodplain.

- FEMA map

☐ Yes ☐ No

18.

On-Site Closure Plan Checklist: (19.15.17.13 NMAC) Instructions: Each of the following items must be attached to the closure plan. Please indicate, by a check mark in the box, that the documents are attached.

☐ Siting Criteria Compliance Demonstrations - based upon the appropriate requirements of 19.15.17.10 NMAC

☐ Proof of Surface Owner Notice - based upon the appropriate requirements of Subsection F of 19.15.17.13 NMAC

☐ Construction/Design Plan of Burial Trench (if applicable) based upon the appropriate requirements of 19.15.17.11 NMAC

☐ Construction/Design Plan of Temporary Pit (for in-place burial of a drying pad) - based upon the appropriate requirements of 19.15.17.11 NMAC

☐ Protocols and Procedures - based upon the appropriate requirements of 19.15.17.13 NMAC

☐ Confirmation Sampling Plan (if applicable) - based upon the appropriate requirements of Subsection F of 19.15.17.13 NMAC

☐ Waste Material Sampling Plan - based upon the appropriate requirements of Subsection F of 19.15.17.13 NMAC

☐ Disposal Facility Name and Permit Number (for liquids, drilling fluids and drill cuttings or in case on-site closure standards cannot be achieved)

☐ Soil Cover Design - based upon the appropriate requirements of Subsection H of 19.15.17.13 NMAC

☐ Re-vegetation Plan - based upon the appropriate requirements of Subsection I of 19.15.17.13 NMAC

☐ Site Reclamation Plan - based upon the appropriate requirements of Subsection G of 19.15.17.13 NMAC

19.

Operator Application Certification:

I hereby certify that the information submitted with this application is true, accurate and complete to the best of my knowledge and belief.

Name (Print): Kim Champlin Title: Environmental Representative

Signature: Kim Champlin Date: 11/18/08

e-mail address: kim_champlin@xtoenergy.com Telephone: (505) 333-3100

20.

OCD Approval: ☐ Permit Application (including closure plan) ☒ Closure Plan (only) ☐ OCD Conditions (see attachment)

OCD Representative Signature: [Signature] Approval Date: 09/24/15

Title: Environmental Engineer OCD Permit Number: _____

21.

Closure Report (required within 60 days of closure completion): Subsection K of 19.15.17.13 NMAC

Instructions: Operators are required to obtain an approved closure plan prior to implementing any closure activities and submitting the closure report. The closure report is required to be submitted to the division within 60 days of the completion of the closure activities. Please do not complete this section of the form until an approved closure plan has been obtained and the closure activities have been completed.

☐ Closure Completion Date: _____

22.

Closure Method:

☐ Waste Excavation and Removal ☐ On-Site Closure Method ☐ Alternative Closure Method ☐ Waste Removal (Closed-loop systems only)
☐ If different from approved plan, please explain.

23.

Closure Report Regarding Waste Removal Closure For Closed-loop Systems That Utilize Above Ground Steel Tanks or Haul-off Bins Only:

Instructions: Please identify the facility or facilities for where the liquids, drilling fluids and drill cuttings were disposed. Use attachment if more than two facilities were utilized.

Disposal Facility Name: _____ Disposal Facility Permit Number: _____

Disposal Facility Name: _____ Disposal Facility Permit Number: _____

Were the closed-loop system operations and associated activities performed on or in areas that will not be used for future service and operations?

☐ Yes (If yes, please demonstrate compliance to the items below) ☐ No

Required for impacted areas which will not be used for future service and operations:

- ☐ Site Reclamation (Photo Documentation)
☐ Soil Backfilling and Cover Installation
☐ Re-vegetation Application Rates and Seeding Technique

24.

Closure Report Attachment Checklist: *Instructions: Each of the following items must be attached to the closure report. Please indicate, by a check mark in the box, that the documents are attached.*

- ☐ Proof of Closure Notice (surface owner and division)
☐ Proof of Deed Notice (required for on-site closure)
☐ Plot Plan (for on-site closures and temporary pits)
☐ Confirmation Sampling Analytical Results (if applicable)
☐ Waste Material Sampling Analytical Results (required for on-site closure)
☐ Disposal Facility Name and Permit Number
☐ Soil Backfilling and Cover Installation
☐ Re-vegetation Application Rates and Seeding Technique
☐ Site Reclamation (Photo Documentation)

On-site Closure Location: Latitude _____ Longitude _____ NAD: ☐ 1927 ☐ 1983

25.

Operator Closure Certification:

I hereby certify that the information and attachments submitted with this closure report is true, accurate and complete to the best of my knowledge and belief. I also certify that the closure complies with all applicable closure requirements and conditions specified in the approved closure plan.

Name (Print): _____ Title: _____

Signature: _____ Date: _____

e-mail address: _____ Telephone: _____

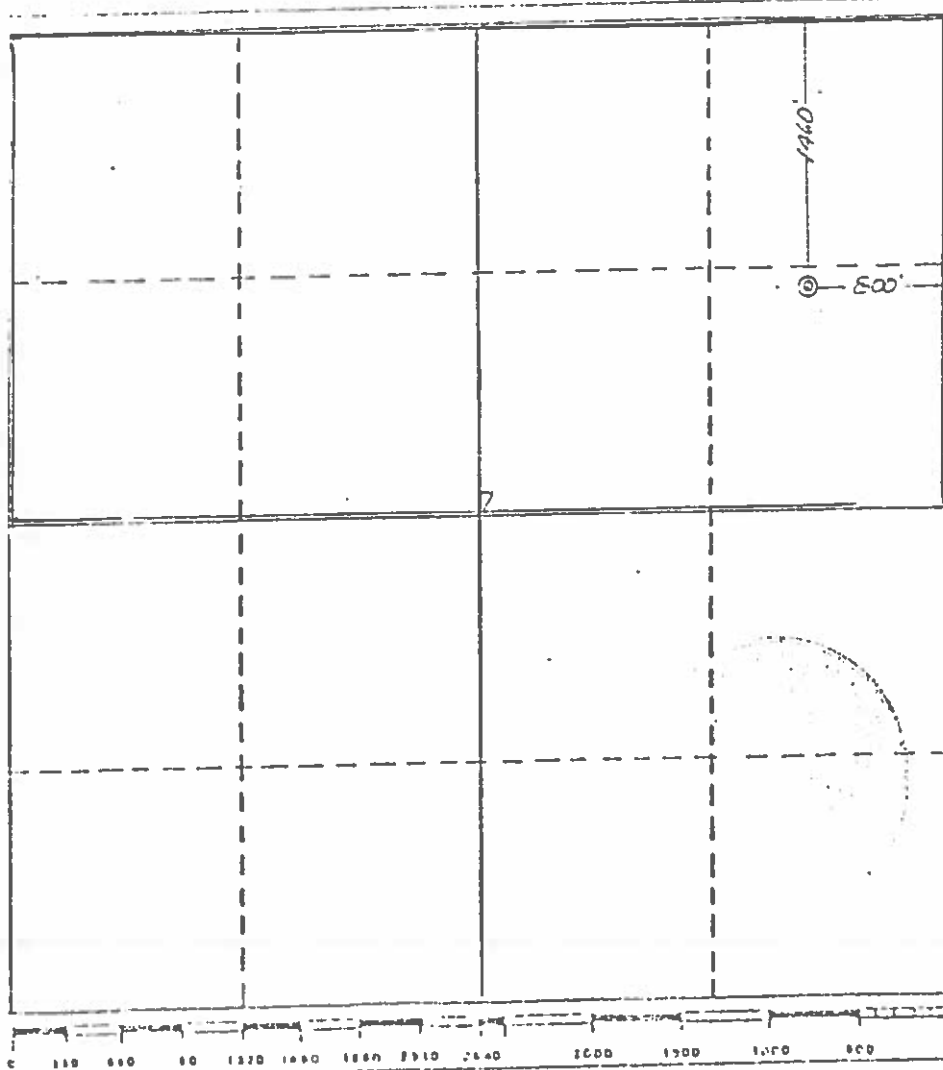
All distances must be from the corner boundaries of the Section

C & E OPERATORS, INC.				Lease FEE		Well No. #7	
Section	7	Township	30 NORTH	Range	11 WEST	County SAN JUAN	
Location of well:							
1460 feet from the NORTH line and		800 feet from the EAST line					
Producing Formation	Mesa Verde		Pool	Blanco MV		Dedicated Acreage: 210.02324.44	

1. Outline the acreage dedicated to the subject well by colored pencil or hatch marks on the plat below.
 2. If more than one lease is dedicated to the well, outline each and identify the ownership thereof (both as to working interest and royalty).
 3. If more than one lease of different ownership is dedicated to the well, have the interests of all owners been consolidated by communitization, unitization, forced-pooling, etc?
- ☐ Yes ☐ No If answer is "yes," type of consolidation _____

If answer is "no," list the owners and tract descriptions which have actually been consolidated. (Use reverse side of this form if necessary.) _____

No allowance will be assigned to the well until all interests have been consolidated (by communitization, unitization, forced-pooling, or otherwise) or until a non-standard unit, eliminating such interests, has been approved by the Division.



CERTIFICATION

I hereby certify that the information contained herein is true and complete to the best of my knowledge and belief.

Name: *Michael Daly*
Position: *Surveyor*
Agent
Company: C & E Operators, Inc.
Date: 11/20/79

I hereby certify that the well location shown on this plat was plotted from field notes of actual surveys made by me or under my supervision and to the best of my knowledge is true.

Date Surveyed: November 13, 1979
Registered Professional Engineer and/or Land Surveyor
Michael Daly
Certificate No. 5992



Lodestar Services, Inc.
PO Box 4465, Durango, CO 81302

**Pit Permit
Siting Criteria
Information Sheet**

Client:	XTO Energy
Project:	Pit Permits
Revised:	8-Nov-08
Prepared by:	Brooke Herb

API#: 3004524016

USPLSS: T30N,R11W,S07H

Name: FEE # 7

Lat/Long: 36.82997, -108.02504

Depth to groundwater: < 50 '

Geologic formation: Nacimiento Formation

Distance to closest continuously flowing watercourse: 4523' N of the Animas River

Distance to closest significant watercourse, lakebed, playa lake, or sinkhole: 703 ' N of irrigation ditch; 2905' E of Kochis Arroyo

Permanent residence, school, hospital, institution or church within 300' No

Soil Type: Entisols

Domestic fresh water well or spring within 500' No

Annual Precipitation: 9.77 inches (Aztec)

Any other fresh water well or spring within 1000' Yes - 669' N of iWaters well SJ00259; 906' NE of SJ03271

Precipitation Notes: no significant precip events

Within incorporated municipal boundaries YES (Aztec)

Within defined municipal fresh water well field Yes

Attached Documents: Groundwater report and Data; FEMA Flood Zone Map

Aerial Photo, Topo Map, Mines Mills and Quarries Map

Wetland within 500' No

Mining Activity:

3776' E of Materials Pit

Within unstable area No

Within 100 year flood plain No - FEMA Flood Zone 'X'

Additional Notes:

FEE #7 Below Ground Tank Siting Criteria and Closure Plan

Well Site Location

Legals: T30N, R11W, Section 07, Quarter Section H

Latitude/Longitude: approximately 36.82997, -108.02504

County: San Juan County, NM

General Description: near Aztec

General Geology and Hydrology

The San Juan Basin is a typical Rocky Mountain basin with a gently dipping southern flank and a steeply dipping northern flank. Asymmetrically layered Tertiary sandstones and shales, along with Quaternary alluvial deposits dominate surficial geology (Dane and Bachman, 1965). The proposed below ground tank location will be located near Kochis Arroyo between the Farmington Glade and the Animas River near Aztec, New Mexico. The Nacimiento Formation of Tertiary Age is exposed, along with Quaternary alluvial and aeolian sands within dry washes and arroyos.

Cretaceous and Tertiary sandstones, as well as Quaternary alluvial deposits serve as the primary aquifers in the San Juan basin (Stone et al., 1983). In most of the proposed area, the Nacimiento Formation lies at the surface. Thickness of the Nacimiento ranges from 418 to 2232 feet (Stone et al., 1983). Aquifers within the coarser and continuous sandstone bodies of the Nacimiento Formation are between 0 and 1000' deep in this section of the basin (Stone et al., 1983). Groundwater within these aquifers flows toward the nearby San Juan River and its tributaries.

The prominent soil type at the proposed site is entisols, which are defined as soils that do not show any profile development. Soils are basically unaltered from their parent rock. Miles of arroyos, washes and intermittent streams exist as part of the drainage network towards the La Plata River (www.emnrd.state.nm.us). These features often cut into soil and other unconsolidated materials, contributing to sedimentation downstream. The sudden influx of water from storm events easily erodes soils that cover the area.

The climate of the region is arid, averaging just over 8 inches of rainfall annually. As is typical of the southwestern United States monsoonal weather patterns, most precipitation falls from August through October. The heaviest rainfall occurs in the summer in isolated, intense cloudbursts. November through June is relatively dry. Snow generally falls from December to mid-February and averages less than one-half inch in depth. However, most recharge occurs during the winter months during snowmelt periods from the upper elevations (Western Regional Climate Center www.wrcc.dri.edu).

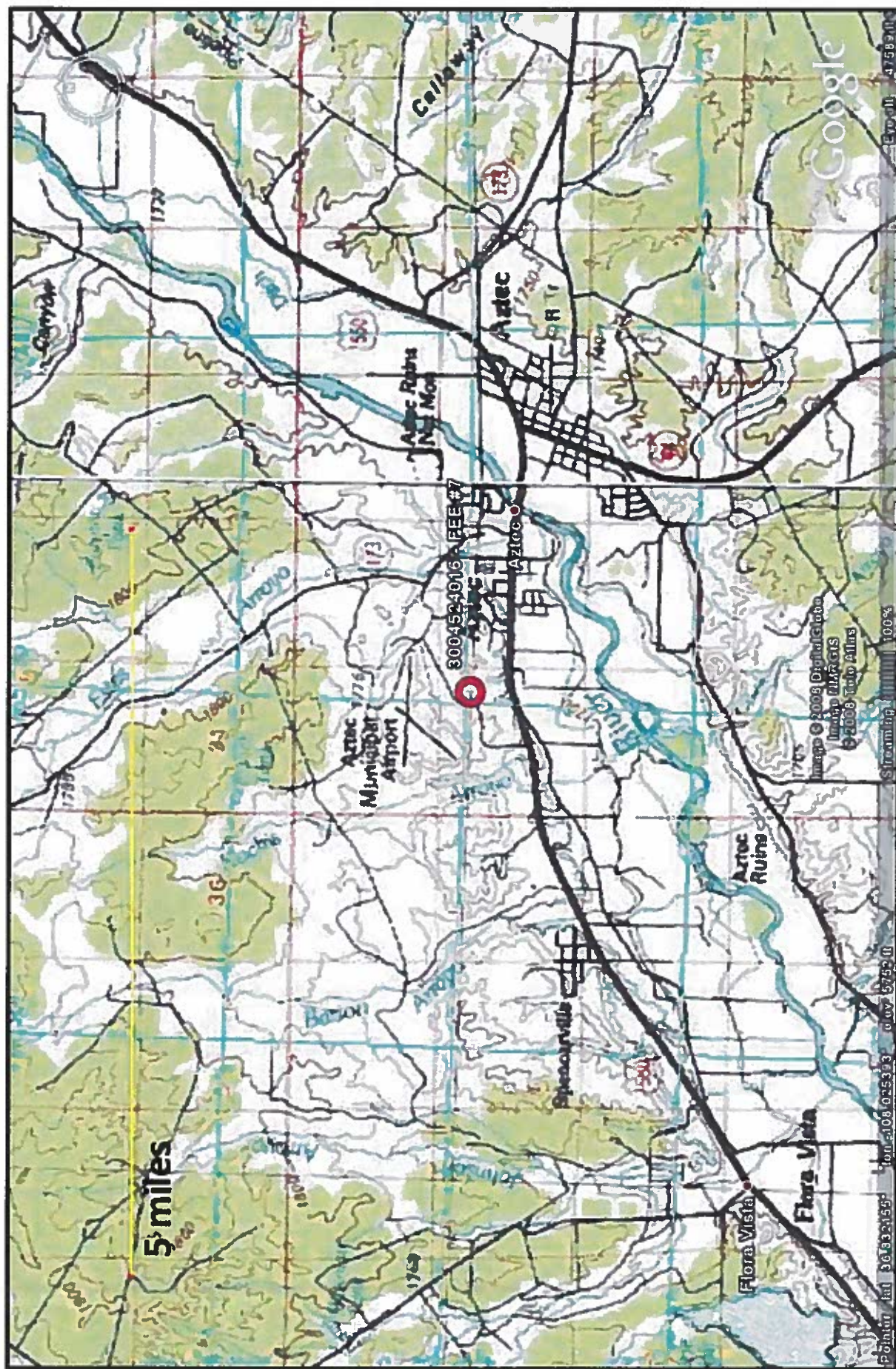
The predominant vegetation is sagebrush and grasses with a more restricted pinon-juniper association (Dick-Peddie, 1993).

Site Specific Hydrogeology

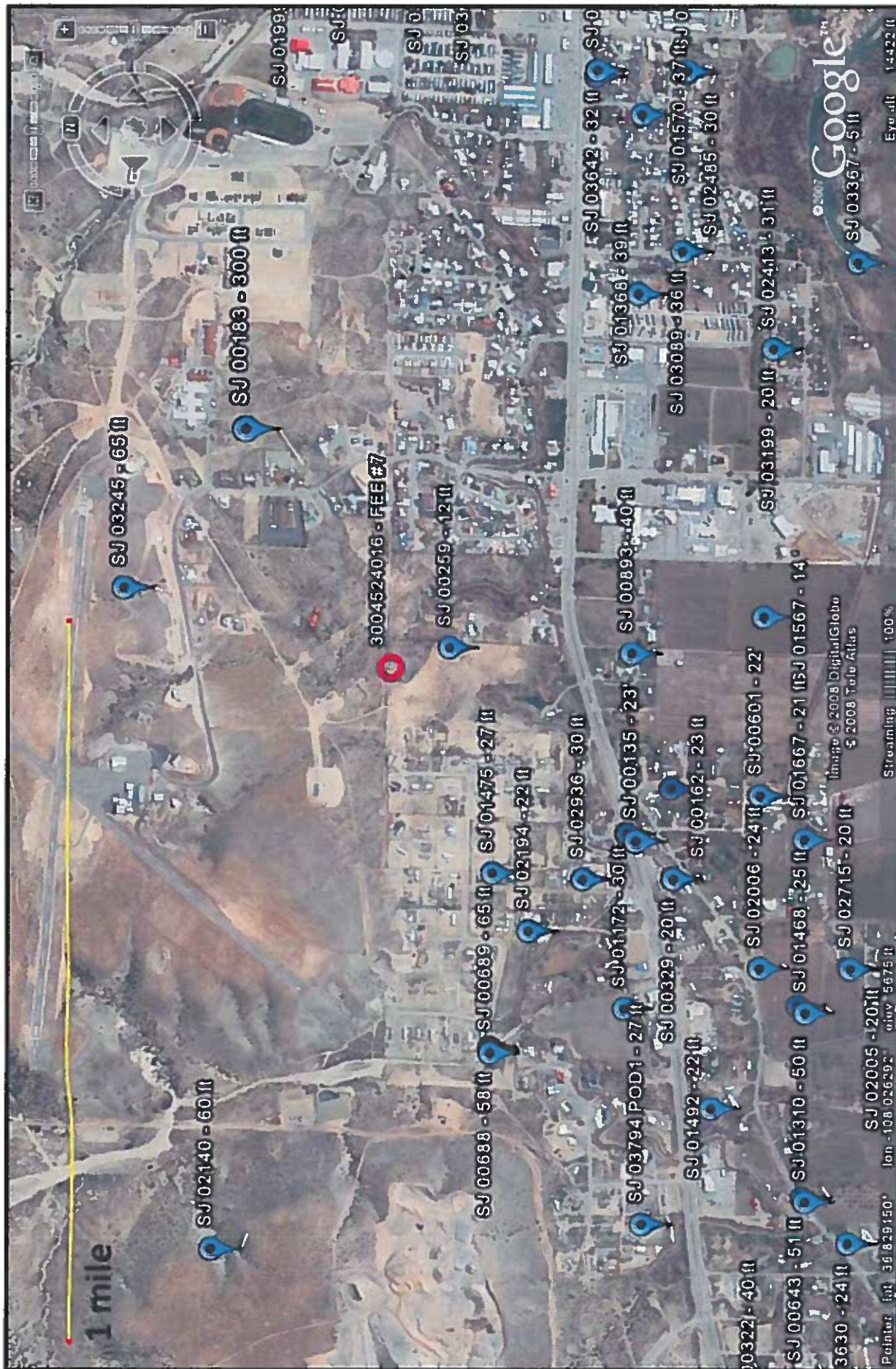
Depth to groundwater is estimated to be less than 50 feet. This estimation is based on data from Stone and others, 1983 and depth to groundwater data published on the New Mexico State Engineer's iWaters Database website. Local topography and proximity to surface hydrologic features are also taken into consideration.

Local aquifers include sandstones within the Nacimiento Formation, which ranges from 0 to 1000 feet deep in this area, as well as shallow aquifers within Quaternary alluvial deposits (Stone et al., 1983). The 1000-foot depth range for Nacimiento aquifers covers an area over 20 miles wide, and depth decreases towards the margin of the San Juan Basin. The site in question is more centrally located, and depth to the aquifer is expected to be closer to 1000 feet. It is well known that groundwater close to the Animas River can be shallow, as the Quaternary deposits near the river itself form shallow aquifers. The proposed site is situated 4523 feet to the north of the Animas River, and is approximately 135 feet higher in elevation (Google Earth).

Groundwater data available from the NM State Engineer's iWaters Database for wells near the proposed site are attached. A map showing the location of wells in reference to the proposed pit location is also included. Pinpoints show locations of wells and the labels for each pinpoint indicate depth to groundwater in feet. Wells are clustered to the south along the Animas River. Depth to groundwater within the nearby wells ranges from 12 feet to 65 feet below ground surface. The closest well to the proposed site is located approximately 669 feet to the south, and is approximately 6 feet lower in topographic elevation (Google Earth). Depth to groundwater within the well is 12 feet below ground surface. A well to the southwest is approximately the same elevation as the proposed site, and has a depth to groundwater of 27 feet below ground surface. This suggests that the groundwater depth at the proposed site is less than 50 feet below ground surface.



<p>Lodestar Services, Inc PO Box 4465 Durango, CO 81302</p>	<p>FEE #7 T30N, R11W, S07H San Juan County, NM</p>	<p>Topographic Map</p>
---	--	------------------------



<p>Lodestar Services, Inc PO Box 4465 Durango, CO 81302</p>	<p>FEE #7 T30N, R11W, S07H San Juan County, NM</p>	<p>iWaters Groundwater Data Map</p>
---	--	---

New Mexico Office of the State Engineer
 POD Reports and Downloads

Township: 30N Range: 11W Sections:

POD / Surface Data Report Avg Depth to Water Report Water Column Report

WATER COLUMN REPORT 09/29/2008

(quarters are 1=NW 2=NE 3=SW 4=SE)
 (quarters are biggest to smallest)

POD Number	Tws	Rog	Sec	q	q	q	Zone	X	Y	Depth Well	Depth Water	Water Column	Depth (in feet)
RG 50669	30N	11W	27	1	3					360	310	50	
SJ 02765	30N	11W	02	1	3					54	20	34	
SJ 00975	30N	11W	02	1	3					60	20	40	
SJ 01217	30N	11W	02	1	3					60	30	30	
SJ 02837	30N	11W	02	3	4	1				150			
SJ 01437	30N	11W	03	1						40	28	12	
SJ 03121	30N	11W	03	1	2	4				36	12	24	
SJ 02049	30N	11W	03	1	3					26	8	18	
SJ 01339	30N	11W	03	1	3	1				40	15	25	
SJ 02814	30N	11W	03	1	3	2				31	8	23	
SJ 00350	30N	11W	03	1	3	2				46	12	34	
SJ 01441	30N	11W	03	1	3	2				48	20	28	
SJ 02835	30N	11W	03	1	3	2				26	8	18	
SJ 01387	30N	11W	03	1	4					40	18	22	
SJ 03698 POD1	30N	11W	03	1	4	1				40	5	35	
SJ 02785	30N	11W	03	1	4	2				31	5	26	
SJ 01313	30N	11W	03	2						70	58	12	
SJ 01805	30N	11W	03	2						35	20	15	
SJ 01807	30N	11W	03	2	1					50	30	20	
SJ 01202	30N	11W	03	2	1	2				35	8	27	
SJ 02781	30N	11W	03	2	1	2				48	23	25	
SJ 03758 POD1	30N	11W	03	2	1	2		268156	2127473	45	21	26	
SJ 03765 POD1	30N	11W	03	2	1	2		268163	2127605	43	20	23	

SJ 03756 POD1	30N	11W	03	2	1	2	266179	2127870	41	20	21
SJ 02786	30N	11W	03	2	3	1	51		51	24	27
SJ 01901	30N	11W	03	2	3	2	60		60	26	34
SJ 00698	30N	11W	03	2	3	3	44		44	14	30
SJ 01261	30N	11W	03	2	3	4				20	
SJ 02930	30N	11W	03	2	4	4	61		61	64	17
SJ 02798	30N	11W	03	2	4	4	80		80	61	19
SJ 00402	30N	11W	03	3			32		32	16	14
SJ 01734	30N	11W	03	3	2		33		33	9	26
SJ 00762	30N	11W	03	3	2		47		47	22	26
SJ 01440	30N	11W	03	3	2	3	41		41	21	20
SJ 01020	30N	11W	03	3	3		27		27	5	22
SJ 03242	30N	11W	03	3	3	1	23		23	9	14
SJ 03732 POD1	30N	11W	03	3	3	1	38		38	9	29
SJ 03239	30N	11W	03	3	3	3	33		33	12	21
SJ 01238	30N	11W	03	4	1		55		55	36	57
SJ 02245	30N	11W	03	4	1	3	66		66	30	36
SJ 01043	30N	11W	03	4	1	4	50		50		
SJ 01249	30N	11W	03	4	2		52		52	22	30
SJ 02563	30N	11W	03	4	2	1	56		56	60	36
SJ 02824	30N	11W	03	4	2	1	70		70	50	26
SJ 03153	30N	11W	03	4	2	1	60		60	60	20
SJ 03454	30N	11W	03	4	2	4	100		100		
SJ 03291	30N	11W	03	4	3	2	38		38	16	20
SJ 00366	30N	11W	03	4	4	4	33		33	16	16
SJ 01364	30N	11W	04	2			115		115	56	29
SJ 03076	30N	11W	04	2	2	3	44		44	10	34
SJ 02903	30N	11W	04	2	3	2	45		45	31	18
SJ 03039	30N	11W	04	4	1	2	53		53	40	13
SJ 01450	30N	11W	04	4	3		45		45	20	25
SJ 02941	30N	11W	04	4	3	2	58		58	37	21
SJ 01367	30N	11W	04	4	4	1	48		48	20	28
SJ 03407	30N	11W	04	4	4	4	30		30	5	25
SJ 03267	30N	11W	05	2	1	3	63		63	60	23
SJ 03245	30N	11W	06	4	4	4	59		59	65	16
SJ 02194	30N	11W	07	1	1	1	70		70	22	37
SJ 02140	30N	11W	07	1	4	3	78		78	60	10
SJ 00689	30N	11W	07	1	4	3	60		60	65	13
SJ 00690	30N	11W	07	1	4	3					
SJ 00882	30N	11W	07	1	4	3	60		60	50	10

W 453700 2124100

SJ 00889	3CN	11W	07	1	4	3	55	20	18
SJ 00806	3CN	11W	07	1	4	3	38	58	12
SJ 00739	3CN	11W	07	1	4	3	70		
SJ 00389	3CN	11W	07	1	4	3	53		
SJ 00688	3CN	11W	07	1	4	3	70	58	12
SJ 00358	3CN	11W	07	1	4	3	61	38	23
SJ 00397	3CN	11W	07	1	4	3	56	35	21
SJ 00415	3CN	11W	07	1	4	3	53	40	13
SJ 00387	3CN	11W	07	1	4	3			
SJ 00748	3CN	11W	07	1	4	3	60	41	19
SJ 03271	3CN	11W	07	2	3	2		27	22
SJ 01475	3CN	11W	07	2	3	3		12	13
SJ 03465	3CN	11W	07	2	3	4	25	22	38
SJ 00259	3CN	11W	07	2	4		60	27	17
SJ 01492	3CN	11W	07	3			44	30	20
SJ 03794 P001	3CN	11W	07	3	1	3	50	30	30
SJ 01172	3CN	11W	07	3	2		30	10	51
SJ 01310	3CN	11W	07	3	3		61	24	44
SJ 01484	3CN	11W	07	3	3		55	25	30
SJ 03630	3CN	11W	07	3	3	3	60	25	35
SJ 01425	3CN	11W	07	3	4		50	24	26
SJ 01468	3CN	11W	07	3	4				
SJ 02006	3CN	11W	07	3	4	2	75	20	38
SJ 03484	3CN	11W	07	3	4	3	55	20	46
SJ 02005	3CN	11W	07	3	4	4	180	23	157
SJ 02715	3CN	11W	07	3	4	4	50	14	36
SJ 00135	3CN	11W	07	4	1		45	12	33
SJ 00769	3CN	11W	07	4	1		38	30	8
SJ 01406	3CN	11W	07	4	1	1	48	22	26
SJ 02936	3CN	11W	07	4	1	3	52	35	17
SJ 00679	3CN	11W	07	4	1	3	53	20	43
SJ 00620	3CN	11W	07	4	1	3	58	23	38
SJ 00329	3CN	11W	07	4	1	3	45	24	21
SJ 00162	3CN	11W	07	4	1	3	60	20	40
SJ 02906	3CN	11W	07	4	1	4	41	21	20
SJ 00893	3CN	11W	07	4	2		40	15	25
SJ 01667	3CN	11W	07	4	3		35	12	23
SJ 01404	3CN	11W	07	4	3		38	22	16
SJ 00919	3CN	11W	07	4	3	2			
SJ 00604	3CN	11W	07	4	3	2			

266272 2115220

SJ 00601	30N	11W	07	4	3	2	40	22	18
SJ 00918	30N	11W	07	4	3	2	35	14	21
SJ 00920	30N	11W	07	4	3	2	35	12	23
SJ 01567	30N	11W	07	4	4	2	35	14	21
SJ 00183	30N	11W	08	1	1	1	360	300	60
SJ 03154	30N	11W	08	1	1	4	40		
SJ 03431	30N	11W	08	1	4		50		
SJ 00332	30N	11W	08	2	2		52	34	18
SJ 01451	30N	11W	08	2	2		64	34	30
SJ 01968	30N	11W	08	2	2		40	25	15
SJ 01999	30N	11W	08	2	2		61	45	16
SJ 01814	30N	11W	08	2	2		52	10	42
SJ 03398	30N	11W	08	2	2		60	20	60
SJ 03210	30N	11W	08	2	2		60	30	30
SJ 03098	30N	11W	08	2	2		63	23	40
SJ 03381	30N	11W	08	2	2		50		
SJ 03240	30N	11W	08	2	2		50		
SJ 00220	30N	11W	08	2	2		60	36	24
SJ 03639	30N	11W	08	2	2		60	24	36
SJ 01115	30N	11W	08	2	2		35	26	3
SJ 03653	30N	11W	08	2	2		62	26	36
SJ 03646	30N	11W	08	2	2		61	24	37
SJ 00228	30N	11W	08	2	2		67	38	29
SJ 03202	30N	11W	08	2	4	2	45		
SJ 03030	30N	11W	08	2	4	2	56	40	16
SJ 03305	30N	11W	08	2	4	2	50		
SJ 03378	30N	11W	08	2	4	2	50		
SJ 02331	30N	11W	08	2	4	2	53	35	18
SJ 03303	30N	11W	08	2	4	2	58	30	25
SJ 02293	30N	11W	08	2	4	2	50	35	15
SJ 00249	30N	11W	08	2	4	2	46	30	16
SJ 01368	30N	11W	08	3	2		55	35	20
SJ 03089	30N	11W	08	3	2		48	36	12
SJ 03480	30N	11W	08	3	2		50	20	
SJ 03199	30N	11W	08	3	4	1	40	20	9
SJ 02413	30N	11W	08	3	4	1	45	31	
SJ 02915	30N	11W	08	3	4	1	25	5	24
SJ 03367	30N	11W	08	3	4	1	55	37	22
SJ 01570	30N	11W	08	4	1		32	20	
SJ 00925	30N	11W	08	4	1	2			

SJ 03642	3CN	11W 08	4	1	2	38	32	26
SJ 01520	3CN	11W 08	4	1	2	58	18	40
SJ 03313	3CN	11W 08	4	1	4	58	20	38
SJ 02485	3CN	11W 08	4	1	4	49	30	19
SJ 02261	3CN	11W 08	4	3	2			
SJ 03419	3CN	11W 08	4	4	2	41	9	32
SJ 02241	3CN	11W 09	1	1		39	27	12
SJ 01560	3CN	11W 09	1	1		40	28	10
SJ 01585	3CN	11W 09	1	1		53	12	12
SJ 03499	3CN	11W 09	1	1	1	35	17	41
SJ 02236	3CN	11W 09	1	1	1	35	17	18
SJ 03304	3CN	11W 09	1	1	2	55	30	25
SJ 03209	3CN	11W 09	1	1	3	49	32	17
SJ 03726 PO01	3CN	11W 09	1	1	3	47	30	17
SJ 03342	3CN	11W 09	1	1	3	50	31	19
SJ 03225	3CN	11W 09	1	1	4	50		
SJ 03229	3CN	11W 09	1	1	4	50		
SJ 00924	3CN	11W 09	1	2	2	46	16	30
SJ 00438	3CN	11W 09	1	2	3	29	19	10
SJ 01169	3CN	11W 09	1	3		56	33	23
SJ 01574	3CN	11W 09	1	3		46	27	19
SJ 02237	3CN	11W 09	1	3	1	48	28	20
SJ 03019	3CN	11W 09	1	3	1	50	30	20
SJ 02493	3CN	11W 09	1	3	1	49	26	23
SJ 03724 PO01	3CN	11W 09	1	3	1	47	36	11
SJ 03031	3CN	11W 09	1	3	1	55	35	20
SJ 01465	3CN	11W 09	1	3	2	47		
SJ 02336	3CN	11W 09	1	3	2	46	11	35
SJ 03482	3CN	11W 09	1	3	2	50		
SJ 03423	3CN	11W 09	1	3	3	50		
SJ 00750	3CN	11W 09	1	4		26	20	30
SJ 02975	3CN	11W 09	2	1	4	37	6	20
SJ 03268	3CN	11W 09	2	2	2	61	12	25
SJ 00364	3CN	11W 09	2	3	2	50	10	51
SJ 03128	3CN	11W 09	2	3	2	50	20	30
SJ 00364 CLW263561	3CN	11W 09	2	3	2	33	11	22
SJ 01955	3CN	11W 09	2	4		40	11	29
SJ 02528	3CN	11W 09	2	4		50	28	32
SJ 02290	3CN	11W 09	2	4	2	45	15	30
SJ 00347	3CN	11W 09		4		36	19	17

SJ 01436	3CN	11W 09	4 1	210	50	160
SJ 03471	3CN	11W 09	4 1 1	20	5	15
SJ 03223	3CN	11W 09	4 2 2	59	25	34
SJ 03263	3CN	11W 09	4 2 2	63	35	28
SJ 03374	3CN	11W 09	4 3 1	44	25	15
SJ 02796	3CN	11W 09	4 3 2	100		
SJ 03214	3CN	11W 09	4 4 2	53	63	30
SJ 03213	3CN	11W 09	4 4 2	100		
SJ 02176	3CN	11W 10	1 3	57	37	20
SJ 03356	3CN	11W 10	1 3 1	55	30	25
SJ 03258	3CN	11W 10	1 3 3	55	10	45
SJ 03444	3CN	11W 10	1 3 3	60		
SJ 03248	3CN	11W 10	1 3 3	50	30	60
SJ 03354	3CN	11W 10	1 3 3	50	30	50
SJ 00348	3CN	11W 10	1 3 4	72	24	48
SJ 03032	3CN	11W 10	1 4 1	80	30	50
SJ 02819	3CN	11W 10	2 3 3	140	40	100
SJ 03282	3CN	11W 10	2 3 4	70	30	40
SJ 03281	3CN	11W 10	2 3 4	62	32	30
SJ 03572	3CN	11W 10	3 1 2	70		
SJ 03218	3CN	11W 10	3 3 3	50	30	20
SJ 01720	3CN	11W 13		225	50	135
SJ 03745 PO01	3CN	11W 13	1 1 2	325	150	175
SJ 01693	3CN	11W 13	1 3	225	55	135
SJ 01672	3CN	11W 13	1 3	160	50	100
SJ 01294	3CN	11W 13	1 3 3	52	52	40
SJ 02773	3CN	11W 16	1 1 3	46	25	21
SJ 00410	3CN	11W 16	1 2	61	45	16
SJ 03010	3CN	11W 16	1 3 1	60	40	40
SJ 03257	3CN	11W 16	1 3 3	60	40	40
SJ 02923	3CN	11W 16	1 3 3	75	40	35
SJ 03265	3CN	11W 16	1 3 3	50	70	20
SJ 03310	3CN	11W 16	1 3 3	55	20	35
SJ 01082	3CN	11W 16	2 2 1	60	34	46
SJ 01722	3CN	11W 17	1	20	3	12
SJ 01528	3CN	11W 17	1 1	26	10	16
SJ 03373	3CN	11W 17	1 1 3	50	35	15
SJ 01948	3CN	11W 17	1 2	21	3	16
SJ 02817	3CN	11W 17	1 2 2	15		
SJ 01722 PO02	3CN	11W 17	1 2 4	17	3	14

266967 2116417

SJ 01899	30N	11W	17	1	3	2	27	7	20
SJ 03771 POD1	30N	11W	17	1	3	3	20	6	14
SJ 03750 POD1	30N	11W	17	1	3	3	20	6	14
SJ 03319	30N	11W	17	1	3	4	55	31	24
SJ 03266	30N	11W	17	1	4	3	30	10	20
SJ 03436	30N	11W	17	1	4	3	20	30	24
SJ 00745	30N	11W	17	2			54		14
SJ 00665	30N	11W	17	2	1	1	28	14	21
SJ 01342	30N	11W	17	2	1	1	26	5	11
SJ 00166	30N	11W	17	2	3		48	11	37
SJ 01057	30N	11W	17	2	3		63	26	35
SJ 01060	30N	11W	17	2	3		58	23	35
SJ 03241	30N	11W	17	2	3	3	75	20	55
SJ 03269	30N	11W	17	2	3	4	50	10	70
SJ 01200	30N	11W	17	2	4		50	20	30
SJ 03219	30N	11W	17	2	4	2	58	35	30
SJ 00159	30N	11W	17	3	1		35	8	27
SJ 03276	30N	11W	17	3	1	4	60	20	40
SJ 01296	30N	11W	17	3	2		50	10	40
SJ 03249	30N	11W	17	3	2	2	55	12	43
SJ 01810	30N	11W	17	3	4		29	5	20
SJ 00411	30N	11W	17	4	1		60	25	35
SJ 00234	30N	11W	17	4	1		54	23	31
SJ 01847	30N	11W	17	4	1		30	6	24
SJ 00457	30N	11W	17	4	1	2	52	18	34
SJ 00650	30N	11W	17	4	1	3	45	16	31
SJ 02018	30N	11W	17	4	2		100	40	60
SJ 00136	30N	11W	17	4	2		69	35	34
SJ 03718 POD1	30N	11W	17	4	2	2	68	41	27
SJ 03261	30N	11W	17	4	2	2	58	50	55
SJ 03215	30N	11W	16	1	1	3	52	9	43
SJ 01316	30N	11W	16	1	1	3	46	12	34
SJ 03152	30N	11W	16	1	1	3	52	22	30
SJ 02805	30N	11W	16	1	2	1	60		
SJ 03463	30N	11W	16	1	2	1	70	20	50
SJ 02996	30N	11W	16	1	2	1	50	25	25
SJ 00932	30N	11W	16	1	2	4	32	15	17
SJ 01738	30N	11W	16	1	3		33	6	27
SJ 01733	30N	11W	16	1	3		29	9	20
SJ 01786	30N	11W	16	1	3		35	10	25

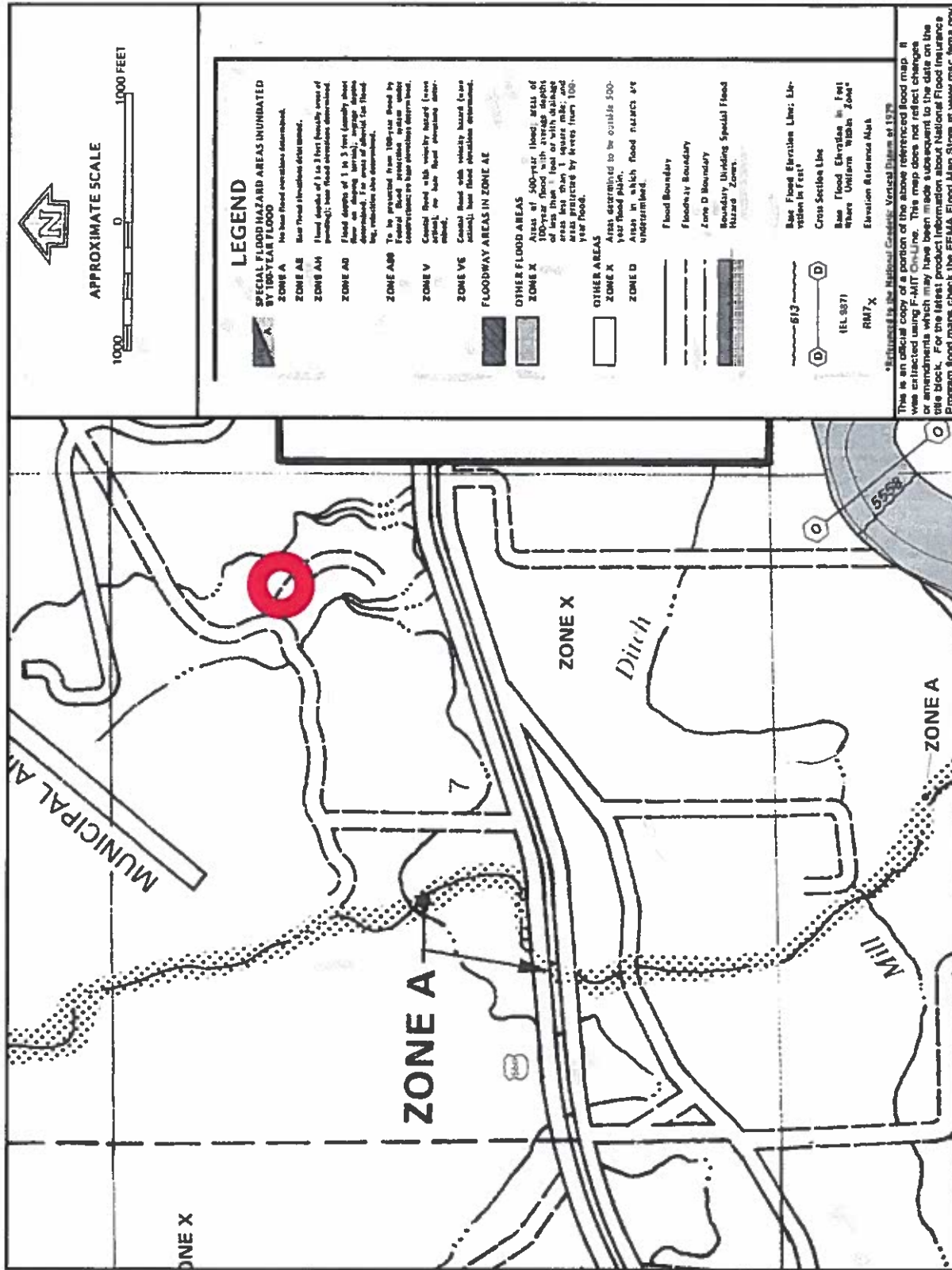
SJ 01401	3CN	11W	18	1	3	44	12	32
SJ 03526	3CN	11W	18	1	3	40		
SJ 03176	3CN	11W	18	1	4	49	20	28
SJ 03177	3CN	11W	18	1	4	37	18	22
SJ 03344	3CN	11W	18	1	4	100	8	92
SJ 03801 PO01	3CN	11W	18	2	2	21	6	18
SJ 03800 PO01	3CN	11W	18	2	2	21	6	18
SJ 01639	3CN	11W	18	2	2	40	18	22
SJ 02098	3CN	11W	18	2	4	21	7	18
SJ 02109	3CN	11W	18	2	4	19	4	18
SJ 02123	3CN	11W	18	2	4	22	8	14
SJ 03290	3CN	11W	18	2	4	40	10	30
SJ 02045	3CN	11W	18	4		480	200	280
SJ 03322	3CN	11W	18	4	1	40	10	30
SJ 03320	3CN	11W	18	4	3	80		
SJ 03321	3CN	11W	18	4	3	80		
SJ 02193	3CN	11W	19			80	105	
SJ 03403	3CN	11W	19	1	2	400		
SJ 00638	3CN	11W	19	2	1	130	70	60
SJ 01073	3CN	11W	19	2	1	100	38	62
SJ 03615	3CN	11W	19	2	1	105	35	70
SJ 03434	3CN	11W	19	2	1	140		
SJ 03088	3CN	11W	19	2	1	120	80	40
SJ 01636	3CN	11W	19	2	2	70	25	45
SJ 02862	3CN	11W	19	2	3	20		
SJ 00284	3CN	11W	19	2	4	200	35	185
SJ 03645	3CN	11W	19	3	1	60	20	40
SJ 03533	3CN	11W	19	3	1	20		
SJ 01621	3CN	11W	19	3	2	40	38	2
SJ 02692	3CN	11W	19	3	2	52	12	40
SJ 02968	3CN	11W	19	3	2	75	5	70
SJ 02812	3CN	11W	19	3	2	50		
SJ 01123	3CN	11W	19	4	1	40	15	25
SJ 03437	3CN	11W	19	4	1	30		
SJ 03315	3CN	11W	19	4	1	60	54	6
SJ 00284 CLM222415	3CN	11W	19	4	4	200	35	185
SJ 03224	3CN	11W	30	1	2	80	30	50
SJ 03077	3CN	11W	30	2	1	75	70	5
SJ 03668	3CN	11W	30	2	1	380	280	100
SJ 03251	3CN	11W	32	3	4	150	77	73



Aerial Photograph	FEE #7 T30N, R11W, S07H San Juan County, NM	Lodestar Services, Inc PO Box 4465 Durango, CO 81302
-------------------	---	--



<p>Lodestar Services, Inc PO Box 4465 Durango, CO 81302</p>	<p>FEE #7 T30N, R11W, S07H San Juan County, NM</p>	<p>Mines, Mills, and Quarries Map</p>
---	--	---



This is an official copy of a portion of the above referenced flood map. It was extracted using F-MIT On-Line. This map does not reflect changes or amendments which may have been made subsequent to the date on the title block. For the latest product information about National Flood Insurance Program flood maps check the FEMA Flood Map Store at www.msc.fema.gov

<p>Lodestar Services, Inc PO Box 4465 Durango, CO 81302</p>	<p>FEE #7 T30N, R11W, S07H San Juan County, NM</p>	<p>FEMA Flood Zone Map</p>
---	--	----------------------------

XTO Energy Inc.
San Juan Basin (Northwest New Mexico)
General Design and Construction Plan
For Below-Grade Tanks

In accordance with Rule 19.15.17.11 NMAC the following information describes the design and construction of below-grade tanks on XTO Energy Inc. (XTO) locations. This is XTO's standard procedure for all below-grade tanks. A separate plan will be submitted for any below-grade tank which does not conform to this plan.

General Plan

1. XTO will design and construct below-grade tanks to contain liquids and solids and prevent contamination of fresh water and protect public health and environment.
2. XTO will post a well sign, in compliance with 19.15.3.103 NMAC, on the existing well site operated by XTO where the existing below-grade tank is located. The sign will list the Operator on record as the operator, the location of the well site by unit letter, section, township, range, and emergency telephone numbers.
3. XTO is requesting approval of an alternative fencing to be used on below-grade tank locations. Below-grade tank locations will be fenced utilizing 48" steel mesh field-fence (hogwire) with pipe railing along the top. A 6' chain link fence will be utilized around the well pad if the well site is within a city limits or ¼ mile of a permanent residence, school, hospital, institution or church. Below-grade tanks located within 1000' of a permanent residence, school, hospital, institution or church will be fenced by 6' chain link fence with at least two strands of barbed wire at the top. All gates associated with below-grade tanks will remain closed and locked when responsible individuals are not on site.
4. XTO shall construct below-grade tanks with an expanded metal covering or solid vaulted top on the top of the below-grade tank.
5. XTO will ensure that below-grade tanks are constructed of materials resistant to the below-grade tank's particular contents and resistant to damage from sunlight. Tanks will be constructed of A36 carbon steel with 3/16" sides and ¼" bottom. (See attached drawing).
6. The below-grade tank system will have a properly constructed foundation consisting of a level base free of rocks, debris, sharp edges or irregularities to prevent punctures, cracks or indentations of the liner or tank bottom. Sand bedding (4") will be placed on top of a level foundation to ensure prevention of punctures, cracks or indentations of the liner or tank bottom.
7. XTO will construct a berm and/or diversion ditch in a manner that prevents the collection of surface water run-on. Below-grade tanks will be equipped with automatic high level shut-off devices as well as manually operated shut-off valves. (See attached drawing).
8. XTO will construct and use below-grade tanks that do not have double walls. The below-grade tank sidewalls will be open for visual inspection for leaks. The sidewalls of the cellar will be constructed with 2" X 12" pine sidewalls and 4" X 4" pine brace posts. The below-grade tank

XTO Energy Inc.
San Juan Basin (Northwest New Mexico)
General Design and Construction Plan
For Below-Grade Tanks
Page 2

bottom will be elevated a minimum of 6" above the underlying ground surface and the below-grade tank will be underlain with a geomembrane liner to divert leaked liquid to a location that can be visually inspected. (See attached drawing).

9. XTO will equip below-grade tanks designed in this manner with a properly functioning automatic high-level shut-off control device and manual controls to prevent overflows. (See attached drawing).
10. XTO will demonstrate to the OCD that the geomembrane liner complies with the specifications of Subparagraph (a) of Paragraph (4) of Subsection I of 19.15.17.11 NMAC and obtain approval from OCD prior to the installation of the design. The geomembrane liner shall have a hydraulic conductivity no greater than 1×10^{-9} cm/sec. The geomembrane liner shall be composed of an impervious, synthetic material that is resistant to petroleum hydrocarbons, salts and acids and alkaline solutions. The liner material shall be resistant to ultraviolet light. Liner compatibility shall comply with EPA SW-846 method 9090A. (See attached drawing).
11. The general specifications for design and construction are attached.



ADJUST DIMENSIONS AS NEEDED TO FIELD FIT TANK IF DIFFERENT THAN SHOWN, IF REQUIRED.



**TYPICAL DESIGN
OF BULFIT TANK
CONTAINMENT**

DATE	TIME	LOCATION	REMARKS
10-10-77	10:00	1000 FT	1000 FT

XTO Energy Inc.
San Juan Basin (Northwest New Mexico)
General Maintenance and Operating Plan
For Below-Grade Tanks

In accordance with Rule 19.15.17.12 NMAC the following information describes the operation and maintenance of below-grade tanks on XTO Energy Inc. (XTO) locations. This is XTO's standard procedure for all below-grade tanks. A separate plan will be submitted for any below-grade tank which does not conform to this plan.

General Plan

1. XTO will operate and maintain below-grade tanks to contain liquids and solids, maintain the integrity of the liner and secondary containment system, prevent contamination of fresh water and protect public health and the environment. Fluid levels will be monitored weekly and high levels will be removed as necessary. Monthly inspections will be conducted to monitor integrity of below-grade tank systems and below-grade tanks will be equipped with automatic high-level shut-off devices.
2. XTO will not allow below-grade tanks to overflow and will use berms and/or diversion ditch to prevent surface run on to enter the below-grade tank. Below-grade tanks will be equipped with automatic high-level shut-off control devices as well as manually operated shut-off valves. See attached drawing for vault design and placement of diversion berms and shut-off devices.
3. XTO will continuously remove any visible or measurable layer of oil from the fluid surface of below-grade tanks in order to prevent significant accumulation of oil.
4. XTO will inspect the below-grade tank monthly and maintain written records for five years. Monthly inspections will consist of documenting the following: (see attached template),
 - Well Name
 - API #
 - Sec., Twn., Rng.
 - XTO Inspector's name
 - Inspection date and time
 - Visible tears in liner
 - Visible signs of tank overflow
 - Collection of surface run on
 - Visible layer of oil
 - Visible signs of tank leak
 - Estimated freeboard
5. XTO will maintain adequate freeboard to prevent over topping of the below-grade tank. High level shut-off devices control the freeboard at an average of 28" beneath the top of the tank.
6. XTO will not discharge into or store any hazardous waste in any below-grade tank.
7. If a below-grade tank develops a leak, or if any penetration of a below-grade tank occurs below the liquids surface, XTO will remove all liquids above the damage or leak line within 48 hours,

XTO Energy Inc.
San Juan Basin (Northwest New Mexico)
General Maintenance and Operating Plan
For Below-Grade Tanks
Page 2

notify the appropriate division district office within 48 hours of the discovery and repair the damage or replace the below-grade tank. If an existing below-grade tank does not meet current requirements of Paragraphs 1-4 of Subsection I of 19.15.17.11 NMAC the tank will be modified or retrofitted to comply. If compliance can not be achieved XTO will implement the approved closure plan.

API No.:

Well Name:

API No.:

Legals

See

Township:

Range:

[illegible]

Notes:

Provide Detailed Description:

Misc:

XTO Energy Inc.
San Juan Basin (Northwest New Mexico)
General Closure Plan
For Below-Grade Tanks

In accordance with Rule 19.15.17.13 NMAC the following information describes the closure requirements of below-grade tanks on XTO Energy Inc. (XTO) locations. This is XTO's standard procedure for all below-grade tanks. A separate plan will be submitted for any below-grade tank which does not conform to this plan.

General Plan

1. XTO will close below-grade tanks within the time periods provided in 19.15.17.13 NMAC, or by an earlier date that the division requires because of imminent danger to fresh water, public health or the environment.
2. XTO will close a below-grade tank that does not meet the requirements of Paragraphs (1) through (4) of Subsection I of 19.15.17.11 NMAC or is not included in Paragraph (5) of Subsection I of 19.15.17.11 NMAC within five years after June 16, 2008, if not retrofitted to comply with Paragraphs (1) through (4) of Subsection I of 19.15.17.11 NMAC.
3. XTO will close a permitted below-grade tank within 60 days of cessation of the below-grade tank's operation or as required by the transitional provisions of Subsection B of 19.15.17.17 NMAC in accordance with a closure plan that the appropriate division district office approves. The closure report will be filed on form C-144.
4. XTO will remove liquids and sludge from below-grade tanks prior to implementing a closure method and will dispose of the liquids and sludge in a division-approved facility. Approved facilities and waste streams include:
 - Envirotech Permit No. NM01-0011 and IEI Permit No. NM 01-0010B
 - Soil contaminated by exempt petroleum hydrocarbons
 - Produced sand, pit sludge and contaminated bottoms from storage of exempt wastes
 - Basin Disposal Permit No. NM01-005
 - Produced water
5. XTO will remove the below-grade tank and dispose of it in a division approved facility or recycle, reuse, or reclaim it in a manner that the appropriate division district office has approved prior to removal. Any associated liners will be removed, properly cleaned and disposed of per 19.15.9.712 NMAC at San Juan County Landfill. Documentation of the final disposition will be included in the closure report.
6. XTO will remove any on-site equipment associated with a below-grade tank unless the equipment is required for some other purpose.
7. XTO will test the soils beneath the below-grade tank to determine whether a release has occurred. At a minimum 5 point composite sample will be collected along with individual grab samples from any area that is wet, discolored or showing other evidence of a release. Samples will be

XTO Energy Inc.
San Juan Basin (Northwest New Mexico)
General Closure Plan
For Below-Grade Tanks
Page 2

analyzed for BTEX, TPH and chlorides to demonstrate that the benzene concentration, as determined by EPA SW-846 methods 8021B or 8260B or EPA method that the division approves, does not exceed 0.2 mg/kg; total BTEX concentration, as determined by EPA SW-846 methods 8021B or 8260B or other EPA method that the division approves, does not exceed 50 mg/kg; the TPH concentration, as determined by EPA method 418.1 or other EPA method that the division approves, does not exceed 100mg/kg; and the chloride concentration, as determined by EPA method 300.1 or other EPA method that the division approves, does not exceed 250 mg/kg, or the background concentration, whichever is greater. XTO will notify the division of its results on form C-141.

8. If XTO or the division determines that a release has occurred, XTO will comply with 19.15.3.116 NMAC and 19.15.1.19NMAC as appropriate.
9. If the sampling program demonstrates that a release has not occurred or that any release does not exceed the concentrations specified in Paragraph (4) of Subsection E of 19.15.17.13 NMAC, XTO will backfill the excavation with compacted, non-waste containing, earthen material; construct a division prescribed soil cover; recontour and re-vegetate the site.
10. Notice of Closure operations will be given to the Aztec Division District III office between 72 hours and one week prior to the start of closure activities via email or verbally. The notification will include the following:
 - i. Operator's name
 - ii. Well Name and API Number
 - iii. Location by Unit Letter, Section, Township, and Range

The surface owner shall also be notified prior to the implementation of any closure operations of below-grade tanks as per the approved closure plan using certified mail, return receipt requested.

11. Re-contouring of location will match fit, shape, line, form and texture of the surrounding area. Re-shaping will include drainage control, prevent ponding, and prevent erosion. Natural drainages will be unimpeded and water bars and/or silt traps will be placed in areas where needed to prevent erosion on a large scale. Final re-contour shall have a uniform appearance with smooth surface, fitting the natural landscape.
12. A minimum of 4 feet of cover shall be achieved and the cover shall include 1 foot of suitable material to establish vegetation at the site, or the background thickness of topsoil, whichever is greater. Soil cover will be constructed to the site's existing grade and ponding of water and erosion of the cover material will be prevented with drainage control, natural drainages and silt traps where needed.
13. XTO will seed the disturbed areas the first growing season after the operator closes the pit. Seeding will be accomplished via drilling on the contour whenever practical or by other division-approved methods. BLM or Forest Service stipulated seed mixes will be used on federal lands. Vegetative cover will equal 70% of the native perennial vegetative cover (un-impacted) consisting of at least three native plant species, including at least one grass, but not including noxious weeds, and maintain that cover through two successive growing seasons. Repeat seeding or planting will be continued until successful vegetative growth occurs.

XTO Energy Inc.
San Juan Basin (Northwest New Mexico)
General Closure Plan
For Below-Grade Tanks
Page 3

14. All closure activities will include proper documentation and be available for review upon request and will be submitted in closure report form to OCD within 60 days of closure of the below-grade tank. Closure report will be filed on form C-144 and incorporate the following:
- i. Proof of closure notice to division and surface owner;
 - ii. Details on capping and covering, where applicable;
 - iii. Inspection reports;
 - iv. Confirmation sampling analytical results;
 - v. Disposal facility name(s) and permit number(s);
 - vi. Soil backfilling and cover installation;
 - vii. Re-vegetation application rates and seeding techniques, (or approved alternative to re-vegetation requirements if applicable);
 - viii. Photo documentation of the site reclamation.

From: Lowe, Leonard, EMNRD
To: ["Hixon, Logan"](#)
Cc: [McDaniel, James](#); [Hoekstra, Kurt](#); [Naegele, Otto](#); [Farnsworth, Rex](#)
Subject: APPROVED 2015-9-15 Request for Approved BGT Closure Plans Only
Date: Monday, September 28, 2015 11:38:00 AM
Importance: High

Mr. Hixon,

OCD approves the BGT closure via C-144 for the following:

-API: 30-045-34214

Well Name: *Danburg Gas Com B 1Y , located in Section 21 (H), Township 30N, Range 12W, San Juan County, New Mexico*

Volume: 120 BBL

-API: 30-045-31769

Well Name: *Federal Gas Com H 3 , located in Section 31 (C), Township 30N, Range 12W, San Juan County, New Mexico*

Volume: 120 BBL

-API: 30-045-24016

Well Name: *Fee 7 , located in Section 7(H), Township 30N, Range 11W, San Juan County, New Mexico*

Volume: 120 BBL

-API: 30-045-32291

Well Name: *Fee 3B , located in Section 3(P), Township 30N, Range 11W, San Juan County, New Mexico*

Volume: 120 BBL

-API: 30-045-33415

Well Name: *Fee 3C , located in Section 3(L), Township 30N, Range 11W, San Juan County, New Mexico*

Volume: 120 BBL

-API: 30-045-33543

Well Name: *Flog 5-4 , located in Section 5(O), Township 29N, Range 13W, San Juan County, New Mexico*

Volume: 120 BBL

-API: 30-045-30087

Well Name: *Hancock Gas Com 2 , located in Section 15(L), Township 30N, Range 12W, San Juan County, New Mexico*

Volume: 120 BBL

-API: 30-045-31255

Well Name: *Hare Gas Com C 1F , located in Section 25 (K), Township 29N, Range 10W, San Juan County, New Mexico*

Volume: 120 BBL

-API: 30-045-34062

Well Name: *Johnson Gas Com D 1F , located in Section 15 (B), Township 30N, Range 12W, San Juan County, New Mexico*

Volume: 120 BBL

Your approved C-144 is (are) located in the OCD imaging link below:

- Open link below:

<http://ocdimage.emnrd.state.nm.us/imaging/default.aspx>.

- Then select “WELL FILES”

Well Files

- Now enter your API Number.

Enter API Number:

30-0 - (example: 30-045-01234)

Search

- Once the API number is entered, the site will display all “thumbnails” associated to this particular well. The C-144 will appear as follows. Click on the thumbnail to review. You may download the thumbnail if you choose to.



If you need assistance to find your C-144 you may contact me. My information is below.

Thank you and have a pleasant day!!

Leonard Lowe

Environmental Engineer

[Environmental Bureau]

Oil Conservation Division
Energy Minerals and Natural Resources Department
1220 South St. Frances
Santa Fe, New Mexico 87004
Office: 505-476-3492
Fax: 505-476-3462
E-mail: leonard.lowe@state.nm.us
Website: <http://www.emnrd.state.nm.us/ocd/>

From: Hixon, Logan [mailto:Logan_Hixon@xtoenergy.com]
Sent: Tuesday, September 15, 2015 2:43 PM
To: Lowe, Leonard, EMNRD <Leonard.Lowe@state.nm.us>
Cc: McDaniel, James <James_McDaniel@xtoenergy.com>; Hoekstra, Kurt <Kurt_Hoekstra@xtoenergy.com>; Naegele, Otto <Otto_Naegele@xtoenergy.com>; Farnsworth, Rex <Rex_Farnsworth@xtoenergy.com>
Subject: 2015-9-15 Request for Approved BGT Closure Plans Only

Mr. Lowe

We are requesting an approved below grade tank closure plans only for the following sites:

Submitted: *Our records show submittal of November 21, 2008 for the following sites:*

-API: 30-045-34214

Well Name: Danburg Gas Com B 1Y , located in Section 21 (H), Township 30N, Range 12W, San Juan County, New Mexico
Volume: 120 BBL

-API: 30-045-31769

Well Name: Federal Gas Com H 3 , located in Section 31 (C), Township 30N, Range 12W, San Juan County, New Mexico
Volume: 120 BBL

-API: 30-045-24016

Well Name: Fee 7 , located in Section 7(H), Township 30N, Range 11W, San Juan County, New Mexico
Volume: 120 BBL

-API: 30-045-32291

Well Name: Fee 3B , located in Section 3(P), Township 30N, Range 11W, San Juan County, New Mexico
Volume:

120 BBL

-API: 30-045-33415

Well Name: Fee 3C , located in Section 3(L), Township 30N, Range 11W, San Juan County, New Mexico

Volume: 120 BBL

-API: 30-045-33543

Well Name: Flog 5-4 , located in Section 5(O), Township 29N, Range 13W, San Juan County, New Mexico

Volume: 120 BBL

-API: 30-045-30087

Well Name: Hancock Gas Com 2 , located in Section 15(L), Township 30N, Range 12W, San Juan County, New Mexico

Volume: 120 BBL

-API: 30-045-31255

Well Name: Hare Gas Com C 1F , located in Section 25 (K), Township 29N, Range 10W, San Juan County, New Mexico

Volume: 120 BBL

-API: 30-045-34062

Well Name: Johnson Gas Com D 1F , located in Section 15 (B), Township 30N, Range 12W, San Juan County, New Mexico

Volume: 120 BBL

Thank you for the help.

If you have any questions or concerns do not hesitate to contact me at anytime. Thank you and have a good day!

Thank You!

XTO ENERGY INC., an ExxonMobil subsidiary

Logan Hixon | 72 Suttle Street, Suite J | Durango, CO 81303 | ph: 970-247-7708 | Cell: 505-386-8018

Logan Hixon | 382 CR 3100 | Aztec, NM 87410 | ph: 505-333-3100 | Logan_Hixon@xtoenergy.com