

District I  
1625 N. French Dr., Hobbs, NM 88240  
District II  
811 S. First St., Artesia, NM 88210  
District III  
1000 Rio Brazos Road, Aztec, NM 87410  
District IV  
1220 S. St. Francis Dr., Santa Fe, NM 87505

State of New Mexico  
Energy Minerals and Natural Resources  
Department  
Oil Conservation Division  
1220 South St. Francis Dr.  
Santa Fe, NM 87505

Form C-144  
Revised April 3, 2017

For temporary pits, below-grade tanks, and multi-well fluid management pits, submit to the appropriate NMOCD District Office.  
For permanent pits submit to the Santa Fe Environmental Bureau office and provide a copy to the appropriate NMOCD District Office.

Pit, Below-Grade Tank, or  
Proposed Alternative Method Permit or Closure Plan Application

Type of action: ☐ Below grade tank registration  
☐ Permit of a pit or proposed alternative method  
☒ Closure of a pit, below-grade tank, or proposed alternative method  
☐ Modification to an existing permit/or registration  
☐ Closure plan only submitted for an existing permitted or non-permitted pit, below-grade tank, or proposed alternative method

**Instructions:** Please submit one application (Form C-144) per individual pit, below-grade tank or alternative request

Please be advised that approval of this request does not relieve the operator of liability should operations result in pollution of surface water, ground water or the environment. Nor does approval relieve the operator of its responsibility to comply with any other applicable governmental authority's rules, regulations or ordinances.

1.  
Operator: Breitbart Operating LP OGRID #: 370080  
Address: 1111 Bagby Street, Suite 1600 Houston, Texas 77002  
Facility or well name: Libby Minerals LLC 2032 No. 241K  
API Number: 30-021-20579 OCD Permit Number: \_\_\_\_\_  
U/L or Qtr/Qtr UL: K Section 24 Township 20N Range 32E County: Lea County, NM  
Center of Proposed Design: Latitude \_\_\_\_\_ Longitude \_\_\_\_\_ NAD83  
Surface Owner: ☐ Federal ☐ State ☒ Private ☐ Tribal Trust or Indian Allotment

2.  
☐ **Pit:** Subsection F, G or J of 19.15.17.11 NMAC  
Temporary: ☐ Drilling ☐ Workover  
☐ Permanent ☐ Emergency ☐ Cavitation ☐ P&A ☐ Multi-Well Fluid Management Low Chloride Drilling Fluid ☐ yes ☐ no  
☐ Lined ☐ Unlined Liner type: Thickness \_\_\_\_\_ mil ☐ LLDPE ☐ HDPE ☐ PVC ☐ Other \_\_\_\_\_  
☐ String-Reinforced  
Liner Seams: ☐ Welded ☐ Factory ☐ Other \_\_\_\_\_ Volume: \_\_\_\_\_ bbl Dimensions: L \_\_\_\_\_ x W \_\_\_\_\_ x D \_\_\_\_\_

3.  
☐ **Below-grade tank:** Subsection I of 19.15.17.11 NMAC  
Volume: \_\_\_\_\_ bbl Type of fluid: \_\_\_\_\_  
Tank Construction material: \_\_\_\_\_  
☐ Secondary containment with leak detection ☐ Visible sidewalls, liner, 6-inch lift and automatic overflow shut-off  
☐ Visible sidewalls and liner ☐ Visible sidewalls only ☐ Other \_\_\_\_\_  
Liner type: Thickness \_\_\_\_\_ mil ☐ HDPE ☐ PVC ☐ Other \_\_\_\_\_

4.  
☐ **Alternative Method:**  
Submittal of an exception request is required. Exceptions must be submitted to the Santa Fe Environmental Bureau office for consideration of approval.

5.  
**Fencing:** Subsection D of 19.15.17.11 NMAC (Applies to permanent pits, temporary pits, and below-grade tanks)  
☐ Chain link, six feet in height, two strands of barbed wire at top (Required if located within 1000 feet of a permanent residence, school, hospital, institution or church)  
☐ Four foot height, four strands of barbed wire evenly spaced between one and four feet  
☐ Alternate. Please specify \_\_\_\_\_

adopted pursuant to NMSA 1978, Section 3-27-3, as amended.

- Written confirmation or verification from the municipality; Written approval obtained from the municipality

☐ Yes ☐ No

Within the area overlying a subsurface mine.

- Written confirmation or verification or map from the NM EMNRD-Mining and Mineral Division

☐ Yes ☐ No

Within an unstable area.

- Engineering measures incorporated into the design; NM Bureau of Geology & Mineral Resources; USGS; NM Geological Society; Topographic map

☐ Yes ☐ No

Within a 100-year floodplain.

- FEMA map

☐ Yes ☐ No

16.

**On-Site Closure Plan Checklist:** (19.15.17.13 NMAC) *Instructions: Each of the following items must be attached to the closure plan. Please indicate, by a check mark in the box, that the documents are attached.*

- ☐ Siting Criteria Compliance Demonstrations - based upon the appropriate requirements of 19.15.17.10 NMAC  
☐ Proof of Surface Owner Notice - based upon the appropriate requirements of Subsection E of 19.15.17.13 NMAC  
☐ Construction/Design Plan of Burial Trench (if applicable) based upon the appropriate requirements of Subsection K of 19.15.17.11 NMAC  
☐ Construction/Design Plan of Temporary Pit (for in-place burial of a drying pad) - based upon the appropriate requirements of 19.15.17.11 NMAC  
☐ Protocols and Procedures - based upon the appropriate requirements of 19.15.17.13 NMAC  
☐ Confirmation Sampling Plan (if applicable) - based upon the appropriate requirements of 19.15.17.13 NMAC  
☐ Waste Material Sampling Plan - based upon the appropriate requirements of 19.15.17.13 NMAC  
☐ Disposal Facility Name and Permit Number (for liquids, drilling fluids and drill cuttings or in case on-site closure standards cannot be achieved)  
☐ Soil Cover Design - based upon the appropriate requirements of Subsection H of 19.15.17.13 NMAC  
☐ Re-vegetation Plan - based upon the appropriate requirements of Subsection H of 19.15.17.13 NMAC  
☐ Site Reclamation Plan - based upon the appropriate requirements of Subsection H of 19.15.17.13 NMAC

17.

**Operator Application Certification:**

I hereby certify that the information submitted with this application is true, accurate and complete to the best of my knowledge and belief.

Name (Print):

Title:

Signature: \_\_\_\_\_

Date: \_\_\_\_\_

e-mail address:

Telephone: \_\_\_\_\_

18.

**OCD Approval:** ☐ Permit Application (including closure plan) ☒ Closure ~~XXXXX~~ ☐ OCD Conditions (see attachment)

OCD Representative Signature: Randolph Fajin Approval Date: 06Jul17

Title: Hydrologist

OCD Permit Number: na

19.

**Closure Report (required within 60 days of closure completion):** 19.15.17.13 NMAC

*Instructions: Operators are required to obtain an approved closure plan prior to implementing any closure activities and submitting the closure report. The closure report is required to be submitted to the division within 60 days of the completion of the closure activities. Please do not complete this section of the form until an approved closure plan has been obtained and the closure activities have been completed.*

☒ Closure Completion Date 10/27/2016

20.

**Closure Method:**

- ☐ Waste Excavation and Removal ☒ On-Site Closure Method ☐ Alternative Closure Method ☐ Waste Removal (Closed-loop systems only)  
☐ If different from approved plan, please explain.

21.

**Closure Report Attachment Checklist:** *Instructions: Each of the following items must be attached to the closure report. Please indicate, by a check mark in the box, that the documents are attached.*

- ☒ Proof of Closure Notice (surface owner and division)  
☒ Proof of Deed Notice (required for on-site closure for private land only)  
☒ Plot Plan (for on-site closures and temporary pits)  
☒ Confirmation Sampling Analytical Results (if applicable)  
☒ Waste Material Sampling Analytical Results (required for on-site closure)  
☒ Disposal Facility Name and Permit Number  
☒ Soil Backfilling and Cover Installation  
☐ Re-vegetation Application Rates and Seeding Technique  
☒ Site Reclamation (Photo Documentation)


On-site Closure Location: Latitude 35.94741

Longitude -103.49494

NAD: ☐ 1927 ☒ 1983

**Operator Closure Certification:**

I hereby certify that the information and attachments submitted with this closure report is true, accurate and complete to the best of my knowledge and belief. I also certify that the closure complies with all applicable closure requirements and conditions specified in the approved closure plan.

Name (Print): Shelly DoescherTitle: Regulatory AgentSignature: Date: 06/27/2017e-mail address: shelly\_doescher@yahoo.com Telephone: 505-320-5682

**Breitbart Operating LP, Temporary Pit Closure Report  
Libby Minerals LLC 2032 No. 241K (API No. 30-021-20579)  
UL K, Section 24, T20N, R32E, NMPM Harding County, NM**

1. The pit will be closed within six (6) months from the date that the drilling or workover rig is released. If necessary, the division district office may grant an extension not to exceed three (3) months. **The drilling rig was released 9/29/2015. The pit remained open pending completion of the well. On 4/12/2016 a three (3) month extension was granted by Santa Fe District NMOCD (attached), requiring pit closure by 6/29/2016. Due to economic conditions and weather related delays, the pit was closed 10/25/2017.**
2. Surface owners will be notified by Certified Mail at least 72 hours but not more than one week prior to closure of the temporary pit. The notice shall include well name, API number and location. **Surface owner was notified verbally prior to pit closure. Reference attached letter confirming notification.**
3. The appropriate Division District Office (OCD) will be notified verbally and in writing at least 72 hours but not more than one week prior to closure of the temporary pit. The notice shall include well name, API number and location. **NMOCD was notified verbally of pit closure, written confirmation of closure is attached.**
4. If on-site burial is on PRIVATE LAND, Breitbart Operating LP will file a deed notice identifying the exact location of the onsite burial with the county clerk in county where onsite burial occurs. **Certified Recorded Deed Notice attached.**
5. All liquids from the pit will be removed prior to closure. **Liquids were removed by Pacheco Trucking and Construction and disposed of at the Gandy Marley Inc. Waste Facility (NM-711-1-0019) in the Liquid Stabilization Unit (Permit #B1041)**
6. The pit will be stabilized with clean non-waste earthen material with a ratio no more than 3:1. **Pit was stabilized with non-waste containing earthen material in order to achieve the solidification process. The solidification process was accomplished by using a combination of natural drying and mechanically mixing. Pit contents were mixed with non-waste earthen material to a consistency that is deemed safe and stable. The mixing ratio consisted of approximately 3 parts clean soil to 1 part pit contents.**
7. After stabilization, the contents of the pit will be tested to determine whether concentrations are below standards. A five-point composite sample will be collected. The samples will be sent to an approved laboratory and analyzed for benzene, total BTEX, THP, the GRO and DRO combined fraction and chlorides. Assuming water could be encountered around 100', the following should not be exceeded:
  - Chlorides (determined by EPA method 300.1): 40,000 mg/kg or background concentration, whichever is greater
  - TPH (EPA SW-846 method 418.a or other division approved EPA method): 2500 mg/kg
  - GRO and DRO combined fraction (EPA SW-846 method 8015M): 1000mg/kg
  - BTEX (EPA SW-846 method 8021B or 8260B or other approved EPA method): 50 mg/kg
  - Benzene (EPA SW 846 method 8021B or 8206B or other approved EPA method): 10 mg/kg**A five point composite sample was taken of the pit using sample tools and all samples tested per Subsection B of 19.15.17.1 3(B)(1)(b). Results attached.**
8. If the contents are above the concentration limits after stabilization, Breitbart will comply with 19.15.17.13.C (Waste Excavation and Removal). **Not necessary.**
9. If it is determined that contents of the pit don't exceed the above-specified concentrations, the pit will be covered with compacted, non-waste-containing, earthen material. A division-prescribed soil cover will be constructed and the site will be re-contoured and re-vegetated per Subsection D, E, F, G, H of 19.15.17.13 NMAC. **The pit material passed solidification and testing standards. The pit area was then back filled with compacted, non-waste containing earthen material.**

10. All areas associated with the pit that are no longer being used will be substantially restored to the condition that existed prior to well operations by placement of the soil cover re-contouring to match original contours and surrounding topography, and re-vegetating.  
**This was done – please see attached photographs.**
11. If an alternative to the re-vegetation requirements is required to prevent erosion, protect fresh water, or protect human health and the environment, this alternative will be proposed to the surface owner. The proposed alternative, with written documentation demonstrating the surface owner's approval, will be submitted to the division for approval.  
**No alternative is required.**
12. Soil cover will consist of 4' of non-waste containing earthen material with chloride concentrations less than 600 mg/kg including 1' topsoil.  
**Four feet of non-waste earthen cover was achieved including one foot of suitable material to establish vegetation.**
13. All contents, including synthetic pit liners will be buried in place by folding outer edges of the pit liner to overlap waste material, and then installing a geometric liner cover that is 20 mil string reinforced LLDPE, synthetic material, impervious, resistant to ultra violet light, petroleum hydrocarbons, salts, acid and alkaline.  
**This was done, including placing a 20 mil LLDPE liner cover.**
14. Soil cover will be constructed to the site's existing grade and will prevent water erosion of the cover material.  
**This was done – please see attached photographs.**
15. The first favorable growing season following pit closure, all disturbed areas associated with the pit and no longer being used will be seeded or planted.  
**This area will be re-seeded during the next growing season in this area. Reference attached letter**
16. Seeding will be accomplished by drilling on the contour whenever practical, or by other division-approved methods. Vegetative cover will be considered complete when there is a life form ratio of +/- 50% of pre-disturbance levels with at least 70% total plant cover of pre-disturbance level (excluding noxious weeds) or in accordance with 19.15.17.13.H.5.d  
**This will be done during the next growing season in this area.**
17. Seeding or planting will be repeated until the required vegetative cover is successfully achieved.  
**Breitburn will comply.**
18. When conditions aren't favorable for the establishment of vegetation (such as during periods of drought), the division will be contacted for approval to delay seeding or planting, or for approval to use additional cultural techniques such as mulching, fertilizing, irrigating, fencing, etc.  
**Attached letter.**
19. The division will be notified when seeding or planting is completed, and when successful re-vegetation has been achieved.  
**Breitburn will comply.**
20. Place a steel marker at the center of the on-site burial. The marker shall be 4" diameter, at least 4' high and cemented 3' deep.  
**Please reference attached letter confirming the desire of the surface owner to have no steel marker.**
21. Within 60 days of closure completion, a report will be submitted on form C-144 with necessary attachments to document closure activities, including sampling results, a plot plan and backfilling details. In this report, Breitburn will certify that all information is correct and that Breitburn has complied with all applicable requirements and conditions specified in the approved Closure Plan. A plat of the temporary pit location will be provided on form C-102.



May 2, 2017

Hand Deliver by Mr. Buck Pollister

To: Chappy's O Y Land and Cattle Company, Inc.  
P O Box 202  
Mosquero, NM 87733

**Subject: Breitburn Operating LP  
Libby Minerals LLC 2032 No. 241K  
API No. 30-021-20579  
UL K, Section 24, T20N, R32E, NMPM  
Harding County, NM**

**Notification to Surface Owner of On-Site Drilling Pit Closure**

Dear Mr. Libby,

The purpose of this letter is to confirm that verbal notice was given prior to the closure of the above-mentioned pit. Buck Pollister, on behalf of Breitburn Operating LP, proposed to close the pit and remediate the surface land according to all rules and regulations noted in Subsection E of 19.15.17.13 NMAC beginning October 27, 2016.

Your signature also confirms that you do not wish to have a permanent steel marker placed at the center of the onsite pit burial.

Thank you for your consideration,

Shelly Doescher  
Regulatory Agent  
Breitburn Operating LP

Signature: \_\_\_\_\_

Bob Libby  
President  
Chappy's O Y Cattle Company, Inc.

Date: 5-12-17



Randy Bayliss, NMOCD  
William Jones, NMOCD

#### Confirmation of On-Site Pit Closures

Closed October 25, 2016

Well: Libby Minerals LLC 1931 Com No. 022N  
UL N, Section 2, T19N, R31E, NMPM  
1200' FSL, 1500' FWL  
Harding County, NM

Closed October 27, 2016

Well: Libby Minerals LLC 2032 No. 081J  
UL J, Section 8, T20N, R32E, NMPM  
1655' FSL, 1655' FEL  
Harding County, NM

Well: Libby Minerals LLC 2032 No. 241K  
UL K, T20N, R32E, NMPM  
1655' FSL, 1655' FWL  
Harding County, NM

Shelly Doescher  
Regulatory Agent  
Breitburn Operating LP  
505-320-5682



State of New Mexico

County of Harding

**Notice of Pit Closure**

In accordance with Section 19.15.17.13.E.4 of the NMOC, the operator hereby provides confirmation of an on-site burial of a temporary Co2 drilling pit. All rules and regulations of Rule 19.15.17 have been adhered to.

Lease Name ; Libby Minerals LLC 2032  
Well No. 241K  
API No. 30-021-20579  
TWN & RGE T20N, R32E, NMPM Section 24  
Unit Letter: K  
Footages: 1655' FSL, 1655' FWL  
Harding County, NM

IN WITNESS WHEREOF, the recordation notice of Pit Closure/Burial has been executed on the date indicated below by the undersigned.

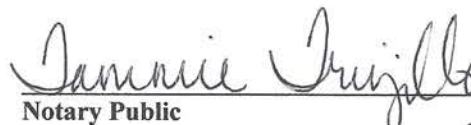
Breitburn Operating LP

  
Shelly Doescher  
Regulatory Agent

State of New Mexico  
County of San Juan

This instrument was acknowledged before me this 7th day of June, 2017 by Shelly Doescher on behalf of Breitburn Operating LP.



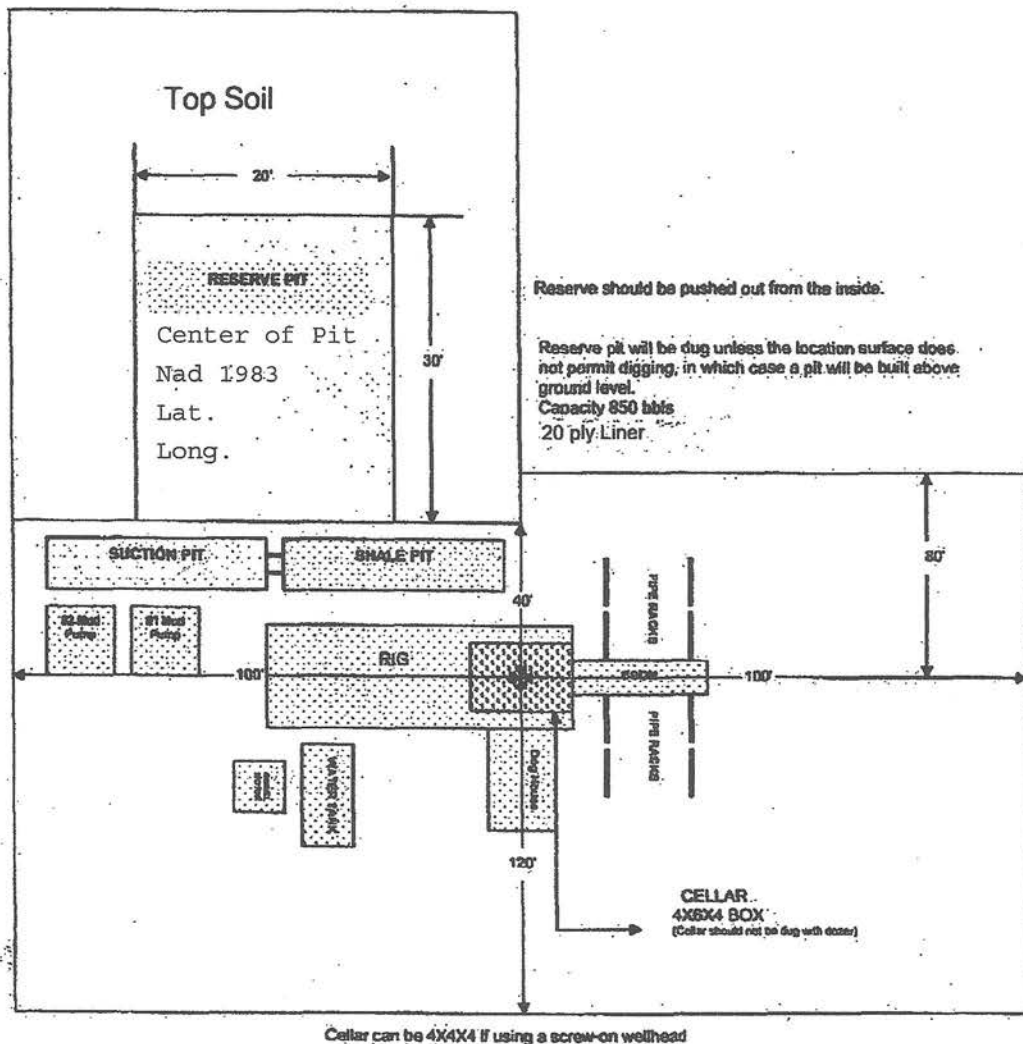
  
Notary Public

HARDING COUNTY, NM  
DOCUMENT# 20170403  
06/12/17 11:20:58 AM  
1 of 1  
BY Courtney Mitchell

June 7<sup>th</sup>, 2017

BreitBurn Management Company, LLC  
Providing management to BreitBurn Operating L.P., BreitBurn Energy Partners L.P. and Pacific Coast Energy Company LP

**LOCATION SPECIFICATION AND RIG LAYOUT  
FOR STEEL PITS**  
(PICTURE NOT TO SCALE)



October 21, 2016

BUCK POLLISTER

BREITBURN MANAGEMENT

1264 BUEYEROS

BUEYEROS, NM 88415

RE: LIBBY RANCH

Enclosed are the results of analyses for samples received by the laboratory on 10/20/16 12:14.

Cardinal Laboratories is accredited through Texas NELAP under certificate number T104704398-16-8. Accreditation applies to drinking water, non-potable water and solid and chemical materials. All accredited analytes are denoted by an asterisk (\*). For a complete list of accredited analytes and matrices visit the TCEQ website at

[www.tceq.texas.gov/field/qa/lab\\_accred\\_certif.html](http://www.tceq.texas.gov/field/qa/lab_accred_certif.html).

Cardinal Laboratories is accredited through the State of Colorado Department of Public Health and Environment for:

Method EPA 552.2	Total Haloacetic Acids (HAA-5)
Method EPA 524.2	Total Trihalomethanes (TTHM)
Method EPA 524.4	Regulated VOCs (V1, V2, V3)

Cardinal Laboratories is accredited through the State of New Mexico Environment Department for:

Method SM 9223-B	Total Coliform and E. coli (Colilert MMO-MUG)
Method EPA 524.2	Regulated VOCs and Total Trihalomethanes (TTHM)
Method EPA 552.2	Total Haloacetic Acids (HAA-5)

Accreditation applies to public drinking water matrices for State of Colorado and New Mexico.

This report meets NELAP requirements and is made up of a cover page, analytical results, and a copy of the original chain-of-custody. If you have any questions concerning this report, please feel free to contact me.

Sincerely,



Celey D. Keene

Lab Director/Quality Manager

**Analytical Results For:**BREITBURN MANAGEMENT  
1264 BUEYEROS  
BUEYEROS NM, 88415Project: LIBBY RANCH  
Project Number: NONE GIVEN  
Project Manager: BUCK POLLISTER  
Fax To:Reported:  
21-Oct-16 11:55

Sample ID	Laboratory ID	Matrix	Date Sampled	Date Received
PIT #1	H602354-01	Soil	19-Oct-16 11:20	20-Oct-16 12:14
PIT #2	H602354-02	Soil	19-Oct-16 11:25	20-Oct-16 12:14
PIT #3	H602354-03	Soil	19-Oct-16 11:30	20-Oct-16 12:14

Pit #1 Libby Minerals LLC 1931 Com No. 022N (API No. 30-021-20688)

Pit #2 Libby Minerals LLC 2032 No. 024K (API No. 30-021-20579)

Pit #3 Libby Minerals LLC 2031 No. 081J (API No. 30-021-20572)

Cardinal Laboratories

\*=Accredited Analyte

PLEASE NOTE: Liability and Damages. Cardinal's liability and client's exclusive remedy for any claim arising, whether based in contract or tort, shall be limited to the amount paid by client for analyses. All claims, including those for negligence or any other cause whatsoever shall be deemed waived unless made in writing and received by Cardinal within thirty (30) days after completion of the applicable service. In no event shall Cardinal be liable for incidental or consequential damage including, without limitation, business interruptions, loss of use, or loss of profits incurred by client, its subsidiaries, affiliates or successors arising out of or related to the performance of the services hereunder by Cardinal, regardless of whether such claim is based upon any of the above stated reasons or otherwise. Results relate only to the samples identified above. This report shall not be reproduced except in full with written approval of Cardinal Laboratories.



Celey D. Keene, Lab Director/Quality Manager

**Analytical Results For:**

BREITBURN MANAGEMENT  
1264 BUEYEROS  
BUEYEROS NM, 88415

Project: LIBBY RANCH  
Project Number: NONE GIVEN  
Project Manager: BUCK POLLISTER  
Fax To:

Reported:  
21-Oct-16 11:55

PIT #2  
H602354-02 (Soil)

Libby Minerals LLC 2032 No. 241K  
(API No. 30-021-20579)

Analyte	Result	MDL	Reporting Limit	Units	Dilution	Batch	Analyst	Analyzed	Method	Notes
---------	--------	-----	-----------------	-------	----------	-------	---------	----------	--------	-------

**Cardinal Laboratories**
**Inorganic Compounds**

Chloride	432		16.0	mg/kg	4	6102009	AC	20-Oct-16	4500-Cl-B	
----------	-----	--	------	-------	---	---------	----	-----------	-----------	--

**Organic Compounds**

TPH 418.1	<100		100	mg/kg	10	6102103	CK	21-Oct-16	418.1	
-----------	------	--	-----	-------	----	---------	----	-----------	-------	--

**Volatile Organic Compounds by EPA Method 8021**

Benzene*	<0.050		0.050	mg/kg	50	6102003	CK	21-Oct-16	8021B	
Toluene*	0.056		0.050	mg/kg	50	6102003	CK	21-Oct-16	8021B	
Ethylbenzene*	<0.050		0.050	mg/kg	50	6102003	CK	21-Oct-16	8021B	
Total Xylenes*	<0.150		0.150	mg/kg	50	6102003	CK	21-Oct-16	8021B	
Total BTEX	<0.300		0.300	mg/kg	50	6102003	CK	21-Oct-16	8021B	

Surrogate: 4-Bromofluorobenzene (PID)		103 %	73.6-140		6102003	CK	21-Oct-16	8021B	
---------------------------------------	--	-------	----------	--	---------	----	-----------	-------	--

**Petroleum Hydrocarbons by GC FID**

GRO C6-C10	<10.0		10.0	mg/kg	1	6102002	CK	21-Oct-16	8015B	
DRO >C10-C28	<10.0		10.0	mg/kg	1	6102002	CK	21-Oct-16	8015B	

Surrogate: 1-Chlorooctane		74.4 %	35-147		6102002	CK	21-Oct-16	8015B	
---------------------------	--	--------	--------	--	---------	----	-----------	-------	--

Surrogate: 1-Chlorooctadecane		72.4 %	28-171		6102002	CK	21-Oct-16	8015B	
-------------------------------	--	--------	--------	--	---------	----	-----------	-------	--

Cardinal Laboratories

\*=Accredited Analyte

PLEASE NOTE: Liability and Damages. Cardinal's liability and client's exclusive remedy for any claim arising, whether based in contract or tort, shall be limited to the amount paid by client for analyses. All claims, including those for negligence or any other cause whatsoever shall be deemed waived unless made in writing and received by Cardinal within thirty (30) days after completion of the applicable service. In no event shall Cardinal be liable for incidental or consequential damage including, without limitation, business interruptions, loss of use, or loss of profits incurred by client, its subsidiaries, affiliates or successors arising out of or related to the performance of the services hereunder by Cardinal, regardless of whether such claim is based upon any of the above stated reasons or otherwise. Results relate only to the samples identified above. This report shall not be reproduced except in full with written approval of Cardinal Laboratories.



Celey D. Keene, Lab Director/Quality Manager

**Analytical Results For:**

 BREITBURN MANAGEMENT  
 1264 BUEYEROS  
 BUEYEROS NM, 88415

 Project: LIBBY RANCH  
 Project Number: NONE GIVEN  
 Project Manager: BUCK POLLISTER  
 Fax To:

 Reported:  
 21-Oct-16 11:55

**Inorganic Compounds - Quality Control**
**Cardinal Laboratories**

Analyte	Result	Reporting Limit	Units	Spike Level	Source Result	%REC	%REC Limits	RPD	RPD Limit	Notes
<b>Batch 6102009 - 1:4 DI Water</b>										
<b>Blank (6102009-BLK1)</b>										
Chloride	ND	16.0	mg/kg							Prepared & Analyzed: 20-Oct-16
<b>LCS (6102009-BS1)</b>										
Chloride	432	16.0	mg/kg	400		108	80-120			Prepared & Analyzed: 20-Oct-16
<b>LCS Dup (6102009-BSD1)</b>										
Chloride	432	16.0	mg/kg	400		108	80-120	0.00	20	

Cardinal Laboratories

\*=Accredited Analyte

PLEASE NOTE: Liability and Damages. Cardinal's liability and client's exclusive remedy for any claim arising, whether based in contract or tort, shall be limited to the amount paid by client for analyses. All claims, including those for negligence or any other cause whatsoever shall be deemed waived unless made in writing and received by Cardinal within thirty (30) days after completion of the applicable service. In no event shall Cardinal be liable for incidental or consequential damage including, without limitation, business interruptions, loss of use, or loss of profits incurred by client, its subsidiaries, affiliates or successors arising out of or related to the performance of the services hereunder by Cardinal, regardless of whether such claim is based upon any of the above stated reasons or otherwise. Results relate only to the samples identified above. This report shall not be reproduced except in full with written approval of Cardinal Laboratories.



Celey D. Keene, Lab Director/Quality Manager

**Analytical Results For:**

BREITBURN MANAGEMENT  
1264 BUEYEROS  
BUEYEROS NM, 88415

Project: LIBBY RANCH  
Project Number: NONE GIVEN  
Project Manager: BUCK POLLISTER  
Fax To:

Reported:  
21-Oct-16 11:55

**Organic Compounds - Quality Control**
**Cardinal Laboratories**

Analyte	Result	Reporting Limit	Units	Spike Level	Source Result	%REC Limits	RPD	RPD Limit	Notes
<b>Batch 6102103 - Solvent Extraction</b>									
<b>Blank (6102103-BLK1)</b>									
					Prepared & Analyzed: 21-Oct-16				
TPH 418.1	ND	100	mg/kg						
<b>LCS (6102103-BS1)</b>									
					Prepared & Analyzed: 21-Oct-16				
TPH 418.1	5820	100	mg/kg	5000		116	70-130		
<b>LCS Dup (6102103-BSD1)</b>									
					Prepared & Analyzed: 21-Oct-16				
TPH 418.1	5550	100	mg/kg	5000		111	70-130	4.73	20

Cardinal Laboratories

\*=Accredited Analyte

PLEASE NOTE: Liability and Damages. Cardinal's liability and client's exclusive remedy for any claim arising, whether based in contract or tort, shall be limited to the amount paid by client for analyses. All claims, including those for negligence or any other cause whatsoever shall be deemed waived unless made in writing and received by Cardinal within thirty (30) days after completion of the applicable service. In no event shall Cardinal be liable for incidental or consequential damage including, without limitation, business interruptions, loss of use, or loss of profits incurred by client, its subsidiaries, affiliates or successors arising out of or related to the performance of the services hereunder by Cardinal, regardless of whether such claim is based upon any of the above stated reasons or otherwise. Results relate only to the samples identified above. This report shall not be reproduced except in full with written approval of Cardinal Laboratories.



Celey D. Keene, Lab Director/Quality Manager

**Analytical Results For:**

BREITBURN MANAGEMENT  
1264 BUEYEROS  
BUEYEROS NM, 88415

Project: LIBBY RANCH  
Project Number: NONE GIVEN  
Project Manager: BUCK POLLISTER  
Fax To:

Reported:  
21-Oct-16 11:55

**Volatile Organic Compounds by EPA Method 8021 - Quality Control**
**Cardinal Laboratories**

Analyte	Result	Reporting Limit	Units	Spike Level	Source Result	%REC	%REC Limits	RPD	RPD Limit	Notes
<b>Batch 6102003 - Volatiles</b>										
<b>Blank (6102003-BLK1)</b>				Prepared: 20-Oct-16 Analyzed: 21-Oct-16						
Benzene	ND	0.050	mg/kg							
Toluene	ND	0.050	mg/kg							
Ethylbenzene	ND	0.050	mg/kg							
Total Xylenes	ND	0.150	mg/kg							
Total BTEX	ND	0.300	mg/kg							
Surrogate: 4-Bromofluorobenzene (PID)	0.0512		mg/kg	0.0500		102	73.6-140			
<b>LCS (6102003-BS1)</b>				Prepared: 20-Oct-16 Analyzed: 21-Oct-16						
Benzene	1.99	0.050	mg/kg	2.00		99.4	82.6-122			
Toluene	2.24	0.050	mg/kg	2.00		112	72.9-122			
Ethylbenzene	2.24	0.050	mg/kg	2.00		112	65.4-131			
Total Xylenes	6.76	0.150	mg/kg	6.00		113	73.8-125			
Surrogate: 4-Bromofluorobenzene (PID)	0.0503		mg/kg	0.0500		101	73.6-140			
<b>LCS Dup (6102003-BSD1)</b>				Prepared: 20-Oct-16 Analyzed: 21-Oct-16						
Benzene	1.96	0.050	mg/kg	2.00		97.8	82.6-122	1.67	8.23	
Toluene	2.20	0.050	mg/kg	2.00		110	72.9-122	1.57	8.71	
Ethylbenzene	2.20	0.050	mg/kg	2.00		110	65.4-131	1.80	9.46	
Total Xylenes	6.65	0.150	mg/kg	6.00		111	73.8-125	1.70	8.66	
Surrogate: 4-Bromofluorobenzene (PID)	0.0505		mg/kg	0.0500		101	73.6-140			

Cardinal Laboratories

\*=Accredited Analyte

PLEASE NOTE: Liability and Damages. Cardinal's liability and client's exclusive remedy for any claim arising, whether based in contract or tort, shall be limited to the amount paid by client for analyses. All claims, including those for negligence or any other cause whatsoever shall be deemed waived unless made in writing and received by Cardinal within thirty (30) days after completion of the applicable service. In no event shall Cardinal be liable for incidental or consequential damage including, without limitation, business interruptions, loss of use, or loss of profits incurred by client, its subsidiaries, affiliates or successors arising out of or related to the performance of the services hereunder by Cardinal, regardless of whether such claim is based upon any of the above stated reasons or otherwise. Results relate only to the samples identified above. This report shall not be reproduced except in full with written approval of Cardinal Laboratories.



Celey D. Keene, Lab Director/Quality Manager

**Analytical Results For:**

BREITBURN MANAGEMENT  
1264 BUEYEROS  
BUEYEROS NM, 88415

Project: LIBBY RANCH  
Project Number: NONE GIVEN  
Project Manager: BUCK POLLISTER  
Fax To:

Reported:  
21-Oct-16 11:55

**Petroleum Hydrocarbons by GC FID - Quality Control**
**Cardinal Laboratories**

Analyte	Result	Reporting Limit	Units	Spike Level	Source Result	%REC	%REC Limits	RPD	RPD Limit	Notes
<b>Batch 6102002 - General Prep - Organics</b>										
Blank (6102002-BLK1) Prepared: 20-Oct-16 Analyzed: 21-Oct-16										
GRO C6-C10	ND	10.0	mg/kg							
DRO >C10-C28	ND	10.0	mg/kg							
EXT DRO >C28-C35	ND	10.0	mg/kg							
Total TPH C6-C28	ND	10.0	mg/kg							
Surrogate: 1-Chlorooctane	53.2		mg/kg	50.0		106	35-147			
Surrogate: 1-Chlorooctadecane	62.7		mg/kg	50.0		125	28-171			
LCS (6102002-BS1) Prepared: 20-Oct-16 Analyzed: 21-Oct-16										
GRO C6-C10	192	10.0	mg/kg	200		95.9	76.7-115			
DRO >C10-C28	210	10.0	mg/kg	200		105	78.3-122			
Total TPH C6-C28	402	10.0	mg/kg	400		100	79.8-117			
Surrogate: 1-Chlorooctane	50.1		mg/kg	50.0		100	35-147			
Surrogate: 1-Chlorooctadecane	57.1		mg/kg	50.0		114	28-171			
LCS Dup (6102002-BSD1) Prepared: 20-Oct-16 Analyzed: 21-Oct-16										
GRO C6-C10	186	10.0	mg/kg	200		92.8	76.7-115	3.20	9.42	
DRO >C10-C28	186	10.0	mg/kg	200		93.2	78.3-122	12.0	13.2	
Total TPH C6-C28	372	10.0	mg/kg	400		93.0	79.8-117	7.70	10.7	
Surrogate: 1-Chlorooctane	47.0		mg/kg	50.0		94.0	35-147			
Surrogate: 1-Chlorooctadecane	44.5		mg/kg	50.0		89.1	28-171			

Cardinal Laboratories

\*=Accredited Analyte

PLEASE NOTE: Liability and Damages. Cardinal's liability and client's exclusive remedy for any claim arising, whether based in contract or tort, shall be limited to the amount paid by client for analyses. All claims, including those for negligence or any other cause whatsoever shall be deemed waived unless made in writing and received by Cardinal within thirty (30) days after completion of the applicable service. In no event shall Cardinal be liable for incidental or consequential damage including, without limitation, business interruptions, loss of use, or loss of profits incurred by client, its subsidiaries, affiliates or successors arising out of or related to the performance of the services hereunder by Cardinal, regardless of whether such claim is based upon any of the above stated reasons or otherwise. Results relate only to the samples identified above. This report shall not be reproduced except in full with written approval of Cardinal Laboratories.



Celey D. Keene, Lab Director/Quality Manager

**Notes and Definitions**

ND	Analyte NOT DETECTED at or above the reporting limit
RPD	Relative Percent Difference
**	Samples not received at proper temperature of 6°C or below.
***	Insufficient time to reach temperature.
-	Chloride by SM4500Cl-B does not require samples be received at or below 6°C Samples reported on an as received basis (wet) unless otherwise noted on report

---

Cardinal Laboratories

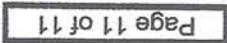
\* = Accredited Analyte

PLEASE NOTE: Liability and Damages. Cardinal's liability and client's exclusive remedy for any claim arising, whether based in contract or tort, shall be limited to the amount paid by client for analyses. All claims, including those for negligence or any other cause whatsoever shall be deemed waived unless made in writing and received by Cardinal within thirty (30) days after completion of the applicable service. In no event shall Cardinal be liable for incidental or consequential damage including, without limitation, business interruptions, loss of use, or loss of profits incurred by client, its subsidiaries, affiliates or successors arising out of or related to the performance of the services hereunder by Cardinal, regardless of whether such claim is based upon any of the above stated reasons or otherwise. Results relate only to the samples identified above. This report shall not be reproduced except in full with written approval of Cardinal Laboratories.



---

Celey D. Keene, Lab Director/Quality Manager



† Cardinal cannot accept verbal changes. Please fax written changes to (575) 393-2326



May 27, 2017

Mr. Randy Bayliss, P.E.  
New Mexico Oil Conservation Division  
1220 S. St. Francis Dr.  
Santa Fe, NM 87505

Re: Pit Closure

Dear Mr. Bayliss,

Breitburn Operating LP will re-seed the disturbed Pit area for the well listed below. The re-seeding will occur in the next rainy season documented for Harding County, New Mexico approximately August/September 2017.

If you have additional questions please contact me @ 505-320-5682 or [shelly\\_doescher@yahoo.com](mailto:shelly_doescher@yahoo.com). Thank you for your time and assistance.

Best regards,

Shelly Doescher  
Regulatory Agent

Libby Minerals LLC 2032 No. 241K  
API No. 30-021-20579

Submit 1 Copy To Appropriate District Office  
District I - (575) 393-6161  
1625 N. French Dr., Hobbs, NM 88240  
District II - (575) 748-1283  
811 S. First St., Artesia, NM 88210  
District III - (505) 334-6178  
1000 Rio Brazos Rd., Aztec, NM 87410  
District IV - (505) 476-3460  
1220 S. St. Francis Dr., Santa Fe, NM 87505

State of New Mexico  
Energy, Minerals and Natural Resources

Form C-103  
Revised July 18, 2013

OIL CONSERVATION DIVISION  
1220 South St. Francis Dr.  
Santa Fe, NM 87505

WELL API NO.  
**30-021-20579**

5. Indicate Type of Lease  
STATE ☐ FEE ☒

6. State Oil & Gas Lease No.

7. Lease Name or Unit Agreement Name

**Libby Minerals LLC 2032**

8. Well Number **24-1-K**

9. OGRID Number  
**370080**

10. Pool name or Wildcat  
**Bravo Dome**

SUNDRY NOTICES AND REPORTS ON WELLS

(DO NOT USE THIS FORM FOR PROPOSALS TO DRILL OR TO DEEPEN OR PLUG BACK TO A DIFFERENT RESERVOIR. USE "APPLICATION FOR PERMIT" (FORM C-101) FOR SUCH PROPOSALS.)

1. Type of Well: Oil Well ☐ Gas Well ☒ Other CO2

2. Name of Operator  
**Breitburn Operating LP**

3. Address of Operator  
**1401 McKinney Street Houston, Texas 77010**

4. Well Location

Unit Letter: **K** **1655** feet from the **South** line and **1655** feet from the **West** line

Section **24** Township **20N** Range **32E** NMPM **Harding County**

11. Elevation (Show whether DR, RKB, RT, GR, etc.)  
**5068.4**

12. Check Appropriate Box to Indicate Nature of Notice, Report or Other Data

NOTICE OF INTENTION TO:

PERFORM REMEDIAL WORK ☐ PLUG AND ABANDON ☐  
TEMPORARILY ABANDON ☐ CHANGE PLANS ☐  
PULL OR ALTER CASING ☐ MULTIPLE COMPL ☐  
DOWNHOLE COMMINGLE ☐  
CLOSED-LOOP SYSTEM ☐  
OTHER: ☐

SUBSEQUENT REPORT OF:

REMEDIAL WORK ☐ ALTERING CASING ☐  
COMMENCE DRILLING OPNS. ☐ P AND A ☐  
CASING/CEMENT JOB ☐  
OTHER: Pit Closure Extension ☒

13. Describe proposed or completed operations. (Clearly state all pertinent details, and give pertinent dates, including estimated date of starting any proposed work). SEE RULE 19.15.7.14 NMAC. For Multiple Completions: Attach wellbore diagram of proposed completion or recompletion.

Pursuant to NMAC 19.15.17.13 G (2), the rig release date of 09/18/2015 requires pit closure by 03/18/2016. The rule also states that the division district office may grant an extension not to exceed three months. Due to market and economic conditions, Breitburn Operating LP respectfully requests a three month extension, allowing a closure deadline of 06/18/2016.

Spud Date:

**09/14/2015**

Rig Release Date:

**09/18/2015**

I hereby certify that the information above is true and complete to the best of my knowledge and belief.

SIGNATURE

TITLE **Agent**

DATE **04/12/2016**

Type or print name: **Shelly Doescher** E-mail address: **shelly\_doescher@yahoo.com** PHONE: **505-320-5682**

For State Use Only

APPROVED BY:

TITLE

**DIST IV**

DATE

**4/12/16**

Conditions of Approval (if any):

Submit To Appropriate District Office Two Copies District I 1625 N. French Dr., Hobbs, NM 88240 District II 811 S. First St., Artesia, NM 88210 District III 1000 Rio Brazos Rd., Aztec, NM 87410 District IV 1220 S. St. Francis Dr., Santa Fe, NM 87505		<b>State of New Mexico</b> <b>Energy, Minerals and Natural Resources</b>  <b>Oil Conservation Division</b> <b>1220 South St. Francis Dr.</b> <b>Santa Fe, NM 87505</b>			<b>Form C-105</b> Revised April 3, 2017		
		1. WELL API NO. 30-021-20579					
		2. Type of Lease <input type="checkbox"/> STATE <input checked="" type="checkbox"/> FEE <input type="checkbox"/> FED/INDIAN					
		3. State Oil & Gas Lease No.					
<b>WELL COMPLETION OR RECOMPLETION REPORT AND LOG</b>							
4. Reason for filing:  <input type="checkbox"/> <b>COMPLETION REPORT</b> (Fill in boxes #1 through #31 for State and Fee wells only)  <input checked="" type="checkbox"/> <b>C-144 CLOSURE ATTACHMENT</b> (Fill in boxes #1 through #9, #15 Date Rig Released and #32 and/or #33; attach this and the plat to the C-144 closure report in accordance with 19.15.17.13.K NMAC)				5. Lease Name or Unit Agreement Name Libby Minerals LLC 2032			
				6. Well Number: 241K			
7. Type of Completion: <input checked="" type="checkbox"/> NEW WELL <input type="checkbox"/> WORKOVER <input type="checkbox"/> DEEPENING <input type="checkbox"/> PLUGBACK <input type="checkbox"/> DIFFERENT RESERVOIR <input type="checkbox"/> OTHER							
8. Name of Operator Breitburn Operating LP				9. OGRID 370080			
10. Address of Operator 1111 Bagby Street, Suite 1600 Houston TX 77002				11. Pool name or Wildcat			
12. Location	Unit Ltr	Section	Township	Range	Lot	Feet from the	
Surface:							
BH:							
13. Date Spudded	14. Date T.D. Reached	15. Date Rig Released 9/18/2015		16. Date Completed (Ready to Produce)		17. Elevations (DF and RKB, RT, GR, etc.)	
18. Total Measured Depth of Well		19. Plug Back Measured Depth		20. Was Directional Survey Made?		21. Type Electric and Other Logs Run	
22. Producing Interval(s), of this completion - Top, Bottom, Name							
<b>23. CASING RECORD (Report all strings set in well)</b>							
CASING SIZE	WEIGHT LB./FT.		DEPTH SET		HOLE SIZE	CEMENTING RECORD	
24. SIZE	TOP	BOTTOM	SACKS CEMENT	SCREEN	25. TUBING RECORD		
					SIZE	DEPTH SET	
						PACKER SET	
26. Perforation record (interval, size, and number)				27. ACID, SHOT, FRACTURE, CEMENT, SQUEEZE, ETC.			
				DEPTH INTERVAL    AMOUNT AND KIND MATERIAL USED			
<b>28. PRODUCTION</b>							
Date First Production		Production Method (Flowing, gas lift, pumping - Size and type pump)			Well Status (Prod. or Shut-in)		
Date of Test	Hours Tested	Choke Size	Prod'n For Test Period	Oil - Bbl	Gas - MCF	Water - Bbl.	
Flow Tubing Press.	Casing Pressure	Calculated 24-Hour Rate	Oil - Bbl.	Gas - MCF	Water - Bbl.	Oil Gravity - API - (Corr.)	
29. Disposition of Gas (Sold, used for fuel, vented, etc.)					30. Test Witnessed By		
31. List Attachments Plat showing location of temporary pit							
32. If a temporary pit was used at the well, attach a plat with the location of the temporary pit.					33. Rig Release Date: 9/18/2015		
34. If an on-site burial was used at the well, report the exact location of the on-site burial:							
Latitude 35.90248			Longitude -103.61926		NAD83		
I hereby certify that the information shown on both sides of this form is true and complete to the best of my knowledge and belief							
Signature <i>Shelly Doescher</i>		Printed Name Shelly Doescher			Title Regulatory Agent		
Date 6/27/2017							
E-mail Address shelly_doescher@yahoo.com							

District I  
1625 N. French Dr., Hobbs, NM 88240  
Phone: (575) 393-6161 Fax: (575) 393-9720  
District II  
811 S. First St., Artesia, NM 88210  
Phone: (575) 748-1283 Fax: (575) 748-9720  
District III  
1000 Rio Brazos Road, Aztec, NM 87410  
Phone: (505) 334-6178 Fax: (505) 334-6170  
District IV  
1220 S. St. Francis Dr., Santa Fe, NM 87505  
Phone: (505) 476-3460 Fax: (505) 476-3462

State of New Mexico  
Energy, Minerals & Natural Resources Department  
**OIL CONSERVATION DIVISION**  
1220 South St. Francis Dr.  
Santa Fe, NM 87505

Form C-102  
Revised August 1, 2011  
Submit one copy to appropriate  
District Office

☐ AMENDED REPORT

**WELL LOCATION AND ACREAGE DEDICATION PLAT**

API Number <b>30-021-20579</b>	Pool Code <b>96010</b>	Pool Name <b>Bravo Dome</b>
Property Code <b>39772</b>	Property Name <b>LIBBY MINERALS LLC 2032</b>	Well Number <b>24-1-K</b>
OGRID No. <b>251905</b>	Operator Name <b>RELIANT EXPLORATION &amp; PRODUCTION, LLC.</b>	Elevation <b>5068.4'</b>

**Surface Location**

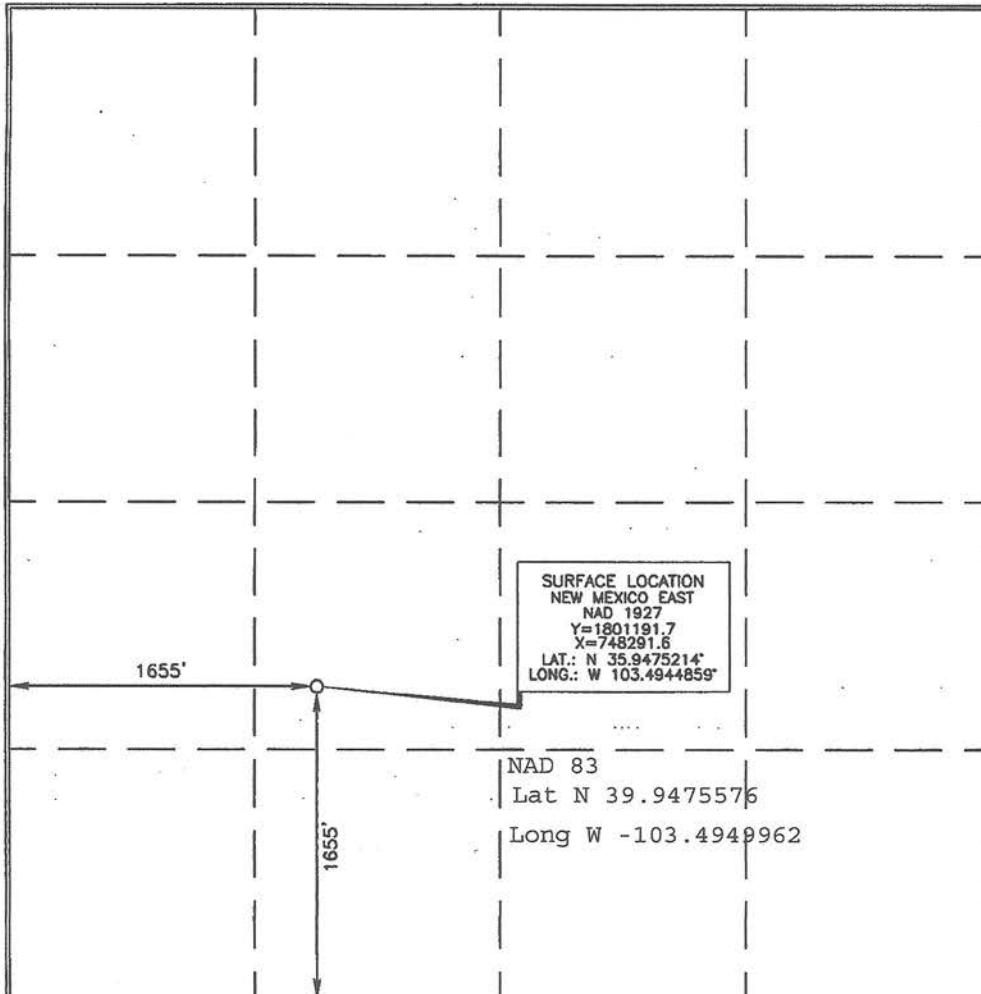
UL or lot no.	Section	Township	Range	Lot Idn	Feet from the	North/South line	Feet from the	East/West line	County
<b>K</b>	<b>24</b>	<b>20 NORTH</b>	<b>32 EAST, N.M.P.M.</b>		<b>1655'</b>	<b>SOUTH</b>	<b>1655'</b>	<b>WEST</b>	<b>HARDING</b>

**Bottom Hole Location If Different From Surface**

UL or lot no.	Section	Township	Range	Lot Idn	Feet from the	North/South line	Feet from the	East/West line	County

Dedicated Acres <b>640</b>	Joint or Infill	Consolidation Code	Order No.
-------------------------------	-----------------	--------------------	-----------

No allowable will be assigned to this completion until all interests have been consolidated or a non-standard unit has been approved by the division.



**OPERATOR CERTIFICATION**

I hereby certify that the information contained herein is true and complete to the best of my knowledge and belief, and that this organization either owns a working interest or unleased mineral interest in the land including the proposed bottom hole location or has a right to drill this well at this location pursuant to a contract with an owner of such a mineral or working interest, or to a voluntary pooling agreement or a compulsory pooling order heretofore entered by the division.

**Vance** 5-16-13  
Signature Date

**Vance Vanderburg**  
Printed Name

**vance@reliantgas.com**  
E-mail Address

**SURVEYOR CERTIFICATION**

I hereby certify that the well location shown on this plat was plotted from field notes of actual surveys made by me or under my supervision, and that the same is true and correct to the best of my belief.

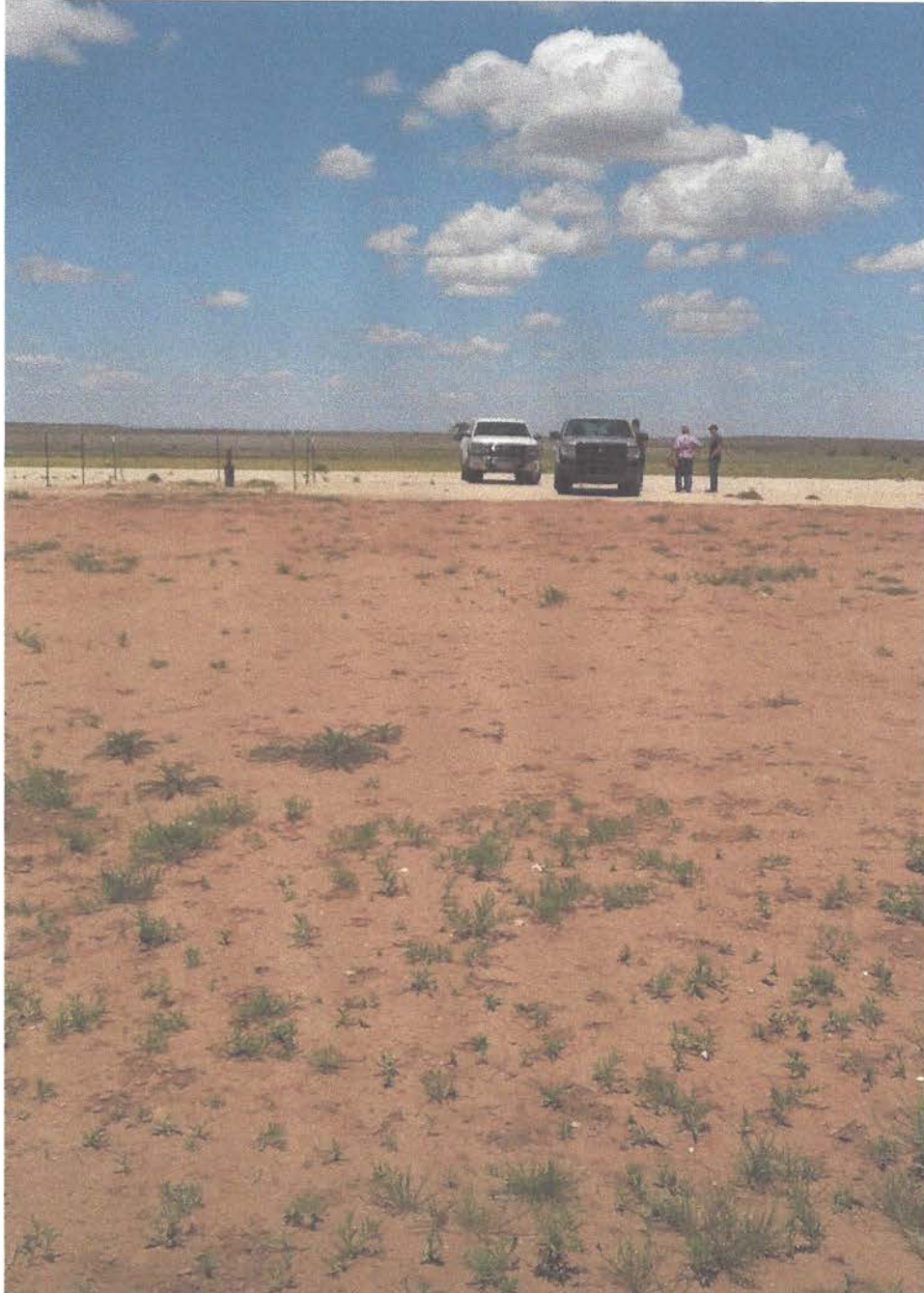
**APR 17, 2013**  
Date of Survey

**Professional Land Surveyor**  
Signature and Seal of Professional Surveyor.

**15079**  
Certificate Number

WO# 130417WL-k (KA)

Libby Minerals LLC 2032 NO. 241K  
Facing North  
Lat 35.94741/Long -103.49494 NAD 83



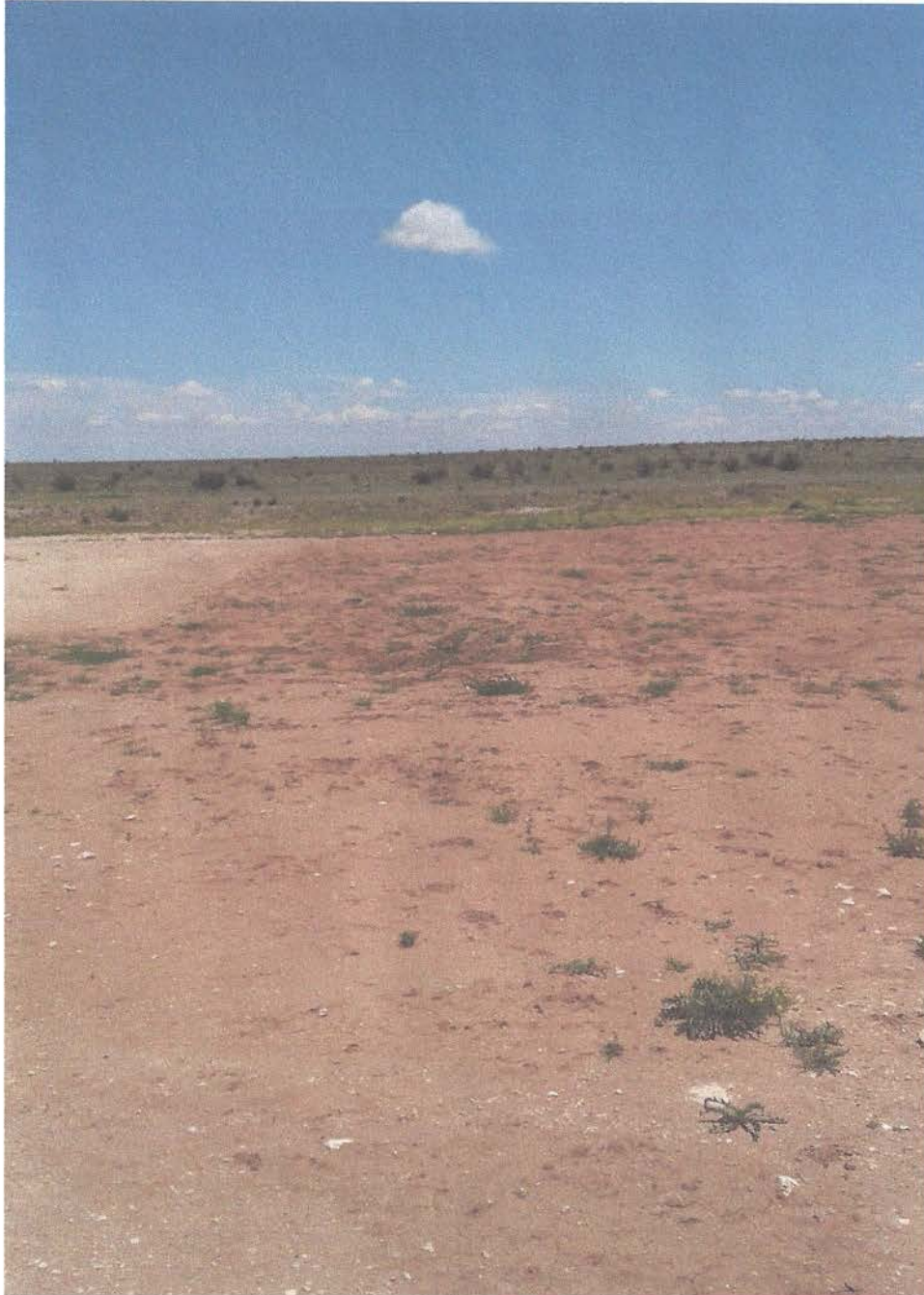
Libby Minerals LLC 2032 No. 241K  
Facing East  
Lat 35.94741/Long-103.49494 NAD83



Libby Minerals LLC 2032 No. 241K

Facing South

Lat 35.94741/Long -103.49494 NAD 83



Libby Minerals LLC 2032 No. 241K

Facing West

Lat 35.94741/Long-103.49494 NAD83

