

N. M. Q. C. G. COPY
UNITED STATES
DEPARTMENT OF THE INTERIOR
GEOLOGICAL SURVEY

SUBMIT IN TRIPLICATE*
(Other instructions on
reverse side)

Form approved.
Budget Bureau No. 42-R1425.

003-10,001

AM 8 24

APPLICATION FOR PERMIT TO DRILL, DEEPEN, OR PLUG BACK

1a. TYPE OF WORK
 DRILL DEEPEN PLUG BACK

b. TYPE OF WELL
 OIL WELL GAS WELL OTHER Wildcat
 SINGLE ZONE MULTIPLE ZONE

2. NAME OF OPERATOR
Tenneco Oil Company

3. ADDRESS OF OPERATOR
P. O. Box 1714, Durango, Colorado

4. LOCATION OF WELL (Report location clearly and in accordance with any State requirements.)*
 At surface
 At proposed prod. zone 1650 FNL, 1650 FEL, Unit G

14. DISTANCE IN MILES AND DIRECTION FROM NEAREST TOWN OR POST OFFICE*

15. DISTANCE FROM PROPOSED* LOCATION TO NEAREST PROPERTY OR LEASE LINE, FT. (Also to nearest drlg. unit line, if any)
 16. NO. OF ACRES IN LEASE 160
 17. NO. OF ACRES ASSIGNED TO THIS WELL

18. DISTANCE FROM PROPOSED LOCATION* TO NEAREST WELL, DRILLING, COMPLETED, OR APPLIED FOR, ON THIS LEASE, FT.
 19. PROPOSED DEPTH 6300'
 20. ROTARY OR CABLE TOOLS Rotary

21. ELEVATIONS (Show whether DF, RT, GR, etc.)
8039 Un.Gr.

22. APPROX. DATE WORK WILL START*
June 1, 1967

23. PROPOSED CASING AND CEMENTING PROGRAM

SIZE OF HOLE	SIZE OF CASING	WEIGHT PER FOOT	SETTING DEPTH	QUANTITY OF CEMENT
15"	10-3/4"	40.5#	450'	300 sx.
8-3/4"	7"	23#	6300'	350 sx.

We plan to drill to approximately 6300'. Run casing as shown above, run logs, and if productive will complete as an oil well, run tbg and conduct potential tests.

CONFIDENTIAL - PLEASE DO NOT RELEASE UNTIL NOTIFIED.

RECEIVED
MAY 29 1967
U. S. GEOLOGICAL SURVEY
ARTESIA, NEW MEXICO

IN ABOVE SPACE DESCRIBE PROPOSED PROGRAM: If proposal is to deepen or plug back, give data on present productive zone and proposed new productive zone. If proposal is to drill or deepen directionally, give pertinent data on subsurface locations and measured and true vertical depths. Give blowout preventer program, if any.

24. SIGNED N. K. Wagner TITLE _____ DATE May 21, 1967

(This space for Federal or State office use)

PERMIT NO. _____ APPROVAL DATE _____

APPROVED BY R. USSEKMAN TITLE _____ DATE _____
 ACTING DISTRICT ENGINEER

*See Instructions On Reverse Side

**NEW MEXICO OIL CONSERVATION COMMISSION
WELL LOCATION AND ACERAGE DEDICATION PLAT**

All distances must be from the outer boundaries of the Section

Operator TENNECO OIL COMPANY		Lease Federal		Well No. 1
Unit Letter G	Section 35	Township 1 South	Range 13 West	County Catron
Actual Footage Location of Well: 1650 feet from the North line and 1650 feet from the East line				
Ground Level Elev. 8039' ungraded	Producing Formation Wildcat	Pool Wildcat	Dedicated Acreage: 80 Acres	

1. Outline the acreage dedicated to the subject well by colored pencil or hachure marks on the plat below.
2. If more than one lease is dedicated to the well, outline each and identify the ownership thereof (both as to working interest and royalty),
3. If more than one lease of different ownership is dedicated to the well, have the interests of all owners been consolidated by communitization, unitization, force-pooling, etc?

RECEIVED
JUN 1 1967

() Yes () No If answer is "yes," type of consolidation

If answer is "no," list the owners and tract descriptions which have actually consolidated. (Use reverse side of this form if necessary.)

No allowable will be assigned to the well until all interests have been consolidated (by communitization, unitization, forced-pooling, or otherwise) or until a non standard unit, eliminating such interests, has been approved by the Commission.

CERTIFICATION

I hereby certify that the information contained herein is true and complete to the best of my knowledge and belief.

M. K. Wagner

Name M. K. Wagner

Position _____

Company Tenneco Oil Company

Date May 22, 1967

I hereby certify that the well location shown on this plat was plotted from field notes of actual surveys made by me or under my supervision, and that the same is true and correct to the best of my knowledge and belief.

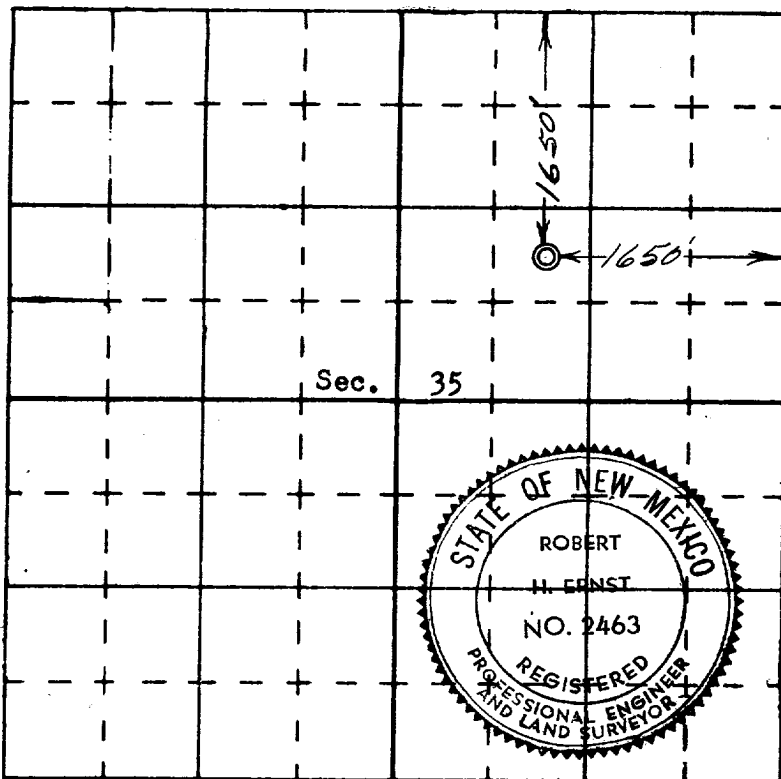
10 May 1967

Date Surveyed _____

Robert H. Ernst

Registered Professional Engineer
and/or Land Surveyor
Robert H. Ernst
N. Mex. PE & L.S. 2463

Certificate No. _____



N
↑

Feb 23, 1886 Plat

Ernst Engineering Co.
Durango, Colorado