

API # 30-007-20032

NEW MEXICO OIL CONSERVATION COMMISSION

Form C-101  
Revised 1-1-65

NO. OF COPIES RECEIVED	
DISTRIBUTION	
SANTA FE	
FILE	
U.S.G.S.	
LAND OFFICE	
OPERATOR	

JUN - 6 1977

5A. Indicate Type of Lease  
STATE  FEE

5. State Oil & Gas Lease No.

7. Unit Agreement Name

8. Farm or Lease Name  
Phelps Dodge

9. Well No.  
1

10. Field and Pool, or Wildcat  
Wildcat

12. County  
Colfax

APPLICATION FOR PERMIT TO DRILL, DEEPEN, OR PLUG BACK

1a. Type of Work  
DRILL  DEEPEN  PLUG BACK

b. Type of Well  
OIL WELL  GAS WELL  OTHER   
SINGLE ZONE  MULTIPLE ZONE

2. Name of Operator  
Bennett Petroleum Corporation

3. Address of Operator  
1776 Lincoln St., Suite 808, Denver, Colorado 80203

4. Location of Well  
UNIT LETTER J LOCATED 1980 FEET FROM THE East LINE  
AND 1980 FEET FROM THE South LINE OF SEC. 24 TWP. 28N RCP. 20E NMPM

13. Proposed Depth  
3200

19A. Formation  
Dakota

20. Rotary or C.T.  
Rotary

21. Elevations (Show whether DF, RT, etc.)  
6366' GR

21A. Final & Status Plug Bond

21B. Drilling Contractor  
Superior Drilling Co.

22. Approx. Date Work will start  
June 1, 1977

PROPOSED CASING AND CEMENT PROGRAM

SIZE OF HOLE	SIZE OF CASING	WEIGHT PER FOOT	SETTING DEPTH	SACKS OF CEMENT	EST. TOP
13-5/8	10-3/4		150	Circ.	Niobrara, 1645
8-5/8	7		2000	--	Carlile, 2500
6-1/4	4-1/2		3100	150	Dakota, 2890
					Morrison, 3090
					T.D. 3140

APPROVAL VALID  
FOR 90 DAYS FROM  
DRILLING COMMENCED

EXPIRES 9/9/77

IN ABOVE SPACE DESCRIBE PROPOSED PROGRAM IF PROPOSAL IS TO DEEPEN OR PLUG BACK, GIVE DATA ON PRESENT PRODUCTIVE ZONE AND PROPOSED NEW PRODUCTIVE ZONE. GIVE BLOWOUT PREVENTER PROGRAM, IF ANY.

I hereby certify that the information above is true and complete to the best of my knowledge and belief.

Signed [Signature] Title President Date May 31, 1977  
(This space for State Use)

APPROVED BY Carl Ulvog TITLE SENIOR PETROLEUM GEOLOGIST DATE 6/6/77

CONDITIONS OF APPROVAL, IF ANY:



**NEW MEXICO OIL CONSERVATION COMMISSION**  
**WELL LOCATION AND ACREAGE DEDICATION PLAT**

Form C-102  
 Supersedes C-128  
 Effective 1-1-65

All distances must be from the outer boundaries of the Section.

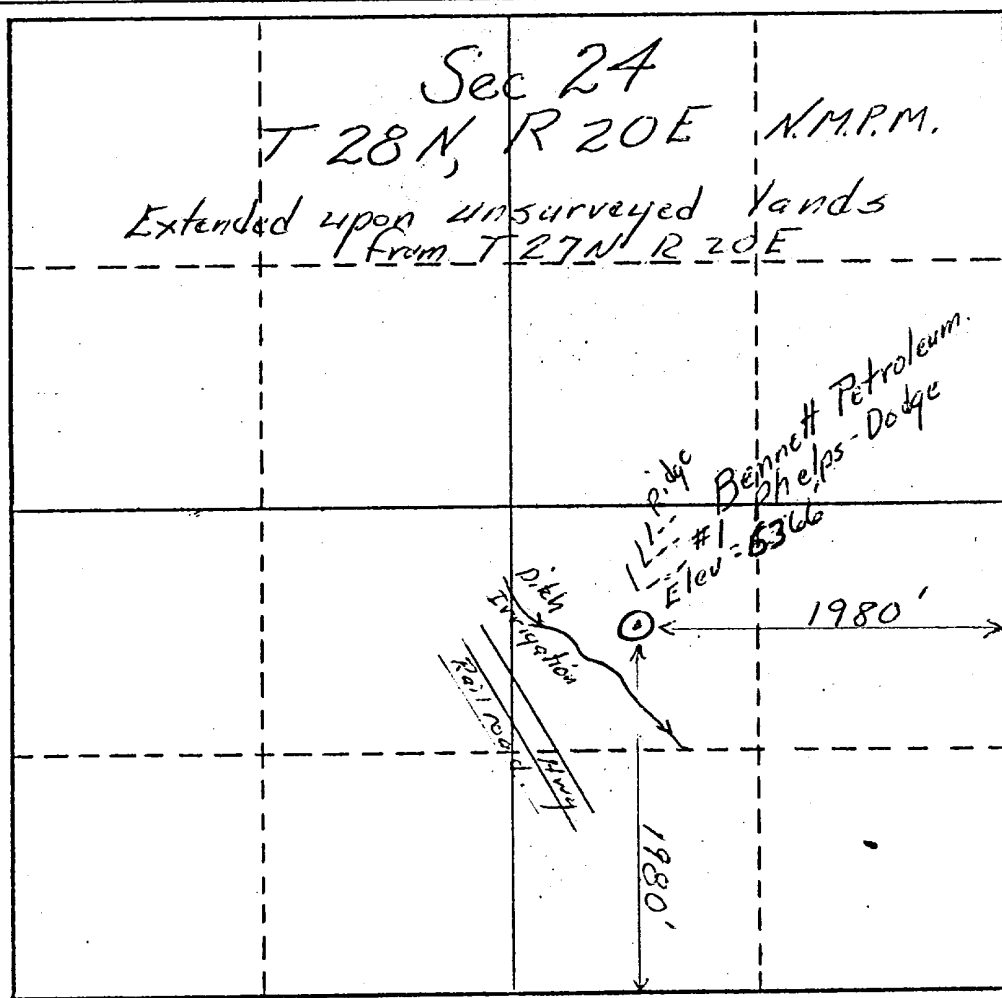
Operator <b>Bennett Petroleum Corporation</b>		Lease <b>Phelps Dodge</b>			Well No. <b>1</b>
Unit Letter <b>J</b>	Section <b>24</b>	Township <b>28 North</b>	Range <b>20 East</b>	County <b>Colfax</b>	
Actual Footage Location of Well: <b>1980</b> feet from the <b>East</b> line and <b>1980</b> feet from the <b>South</b> line					
Ground Level Elev. <b>5566</b>	Producing Formation <b>Dakota</b>		Pool	Dedicated Acreage: <b>160.00</b> Acres	

1. Outline the acreage dedicated to the subject well by colored pencil or hachure marks on the plat below.
2. If more than one lease is dedicated to the well, outline each and identify the ownership thereof (both as to working interest and royalty).
3. If more than one lease of different ownership is dedicated to the well, have the interests of all owners been consolidated by communitization, unitization, force-pooling, etc?

Yes  No If answer is "yes," type of consolidation \_\_\_\_\_

If answer is "no," list the owners and tract descriptions which have actually been consolidated. (Use reverse side of this form if necessary.) Phelps Dodge Corporation

No allowable will be assigned to the well until all interests have been consolidated (by communitization, unitization, forced-pooling, or otherwise) or until a non-standard unit, eliminating such interests, has been approved by the Commission.



**CERTIFICATION**

I hereby certify that the information contained herein is true and complete to the best of my knowledge and belief.

Name **R. E. Bennett**

Position **President**

Company  
**Bennett Petroleum Corp.**

Date  
**May 27, 1977**

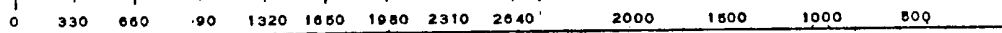
I hereby certify that the well location shown on this plat was plotted from field notes of actual surveys made by me or under my supervision, and that the same is true and correct to the best of my knowledge and belief.

Date Surveyed **May 18, 1977**

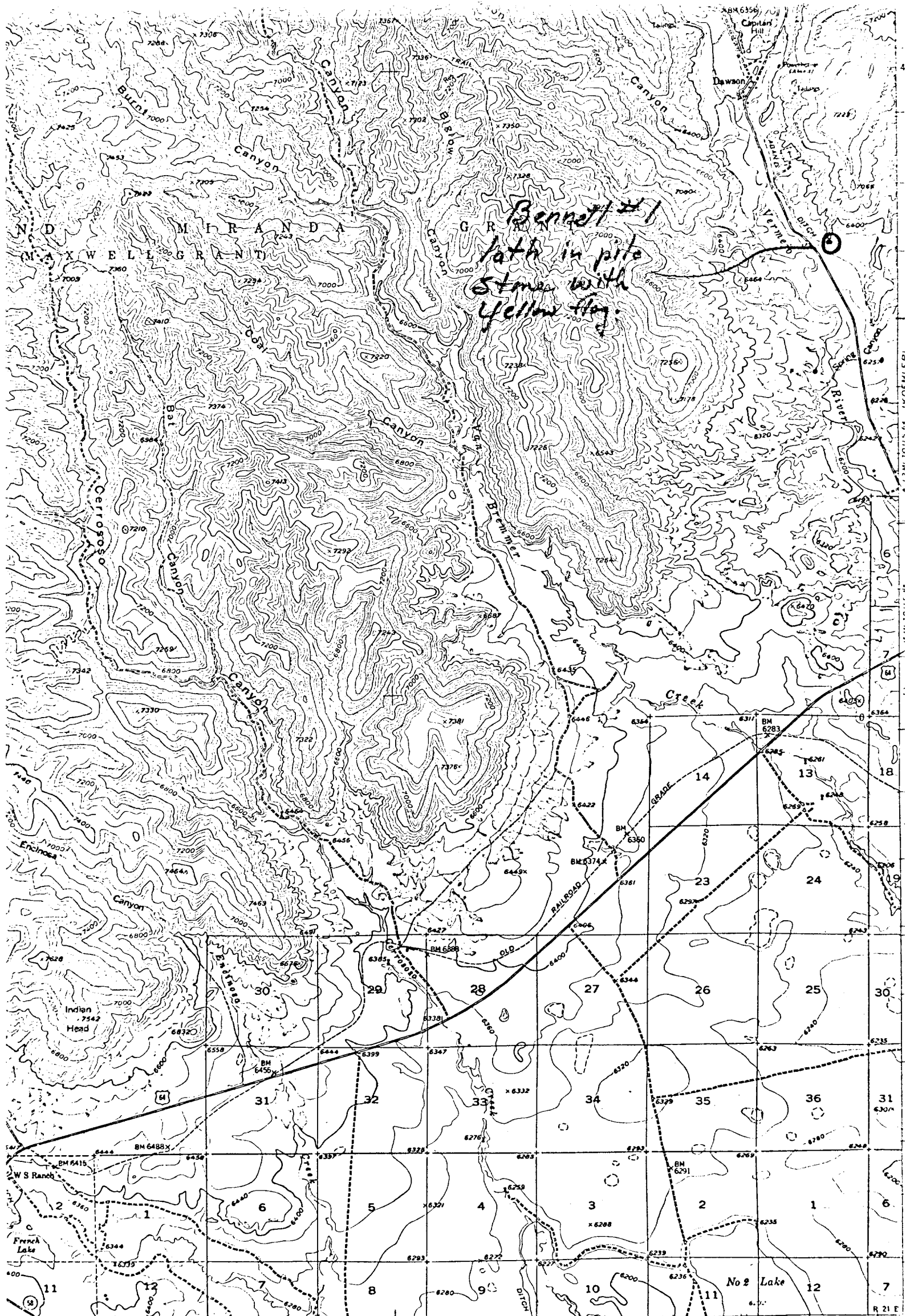
*Bill E. Haffner*  
 Registered Professional Engineer and/or Land Surveyor

**N.M. 4002**

Certificate No. **4002**







SCALE 1:62500

ROAD CLASSIFICATION

NEW MEXICO OIL CONSERVATION COMMISSION  
WELL LOCATION AND ACREAGE DEDICATION PLAT

Form C-102  
Supersedes C-128  
Effective 1-1-65

All distances must be from the outer boundaries of the Section.

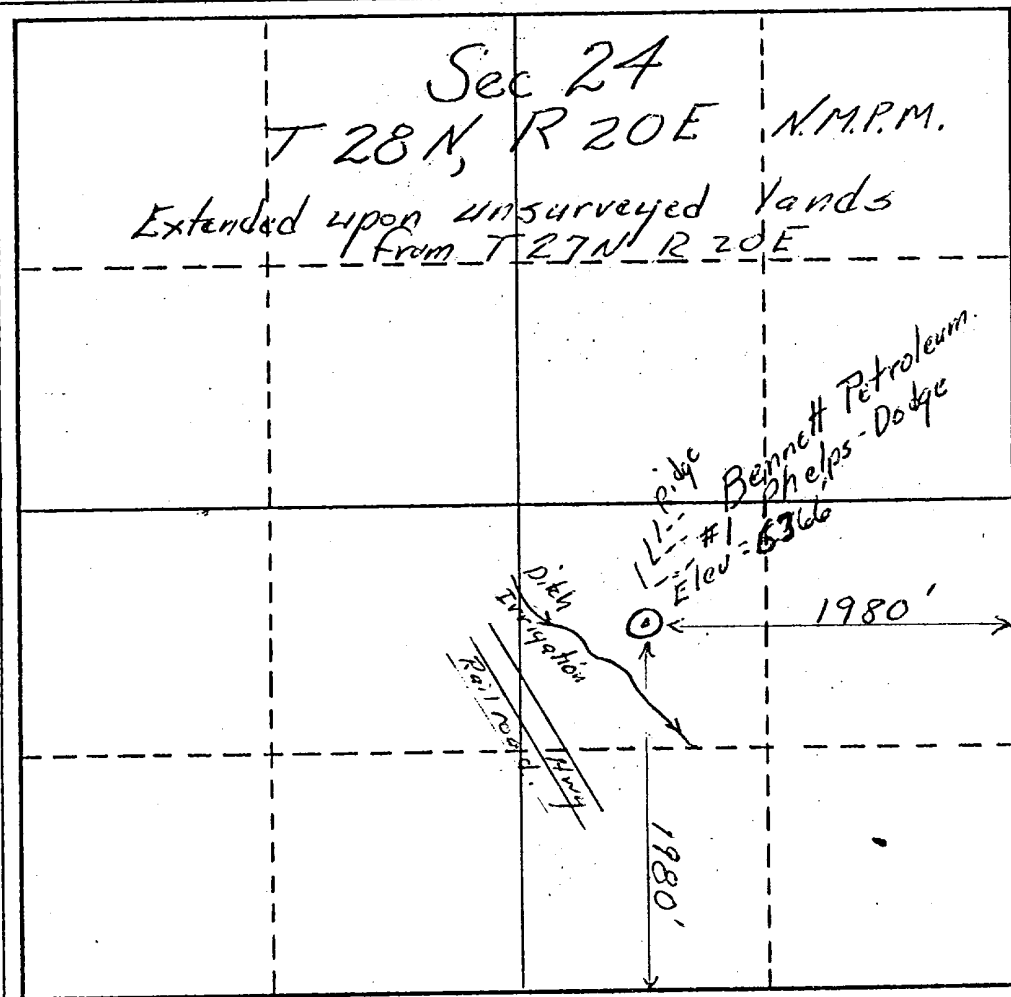
Operator Bennett Petroleum Corporation		Lease Phelps Dodge			Well No. 1
Unit Letter	Section 24	Township 28 North	Range 20 East	County Colfax	
Actual Footage Location of Well: 1980 feet from the East line and 1980 feet from the South line					
Ground Level Elev. 5566	Producing Formation Dakota	Pool	Dedicated Acreage: 160.00 Acres		

- Outline the acreage dedicated to the subject well by colored pencil or hachure marks on the plat below.
- If more than one lease is dedicated to the well, outline each and identify the ownership thereof (both as to working interest and royalty).
- If more than one lease of different ownership is dedicated to the well, have the interests of all owners been consolidated by communitization, unitization, force-pooling, etc?

Yes  No If answer is "yes," type of consolidation \_\_\_\_\_

If answer is "no," list the owners and tract descriptions which have actually been consolidated. (Use reverse side of this form if necessary.) Phelps Dodge Corporation

No allowable will be assigned to the well until all interests have been consolidated (by communitization, unitization, forced-pooling, or otherwise) or until a non-standard unit, eliminating such interests, has been approved by the Commission.



CERTIFICATION

I hereby certify that the information contained herein is true and complete to the best of my knowledge and belief.

Name R. E. Bennett

Position President

Company  
Bennett Petroleum Corp.

Date  
May 27, 1977

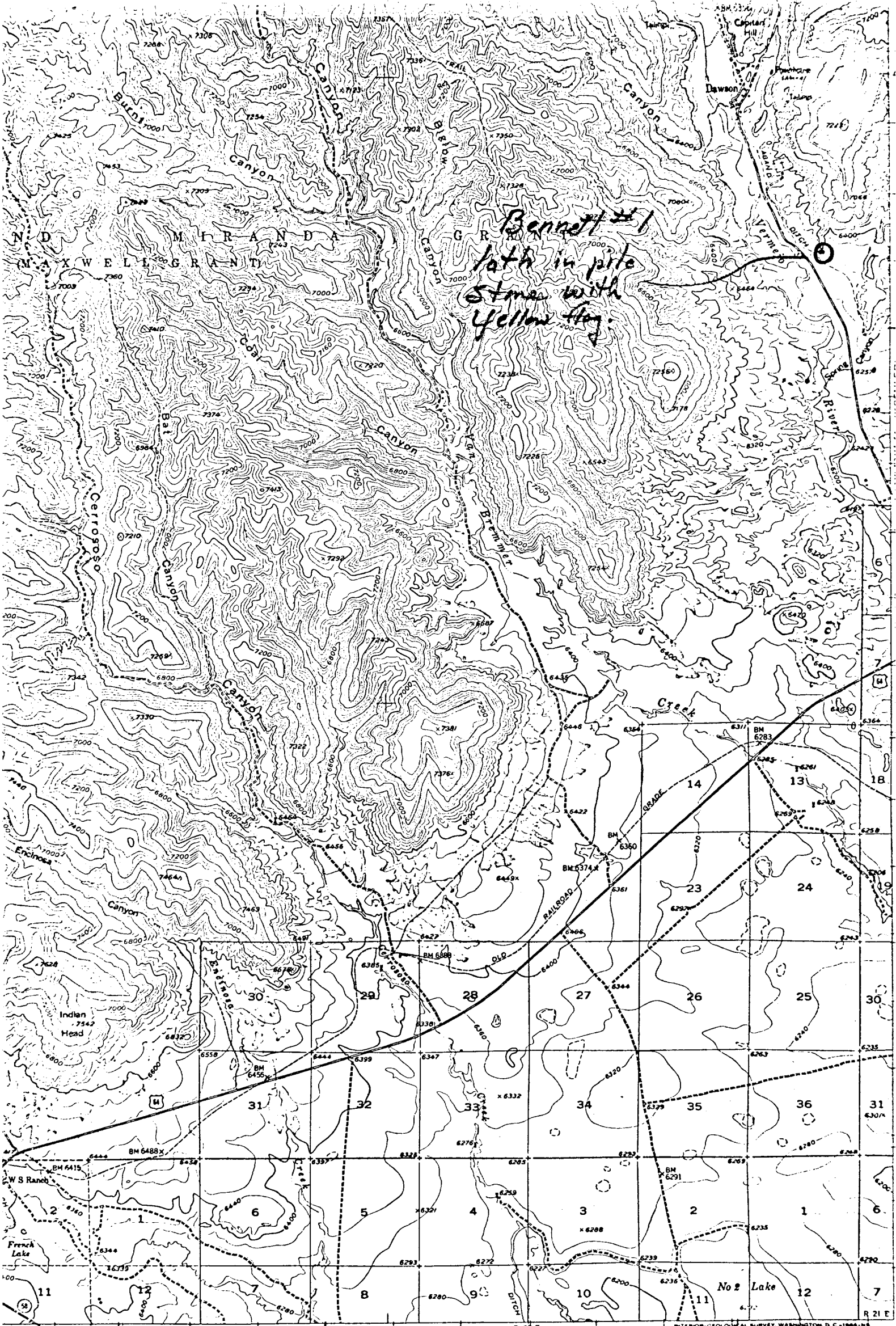
I hereby certify that the well location shown on this plat was plotted from field notes of actual surveys made by me or under my supervision, and that the same is true and correct to the best of my knowledge and belief.

Date Surveyed May 18, 1977

Bill E. Haver  
Registered Professional Engineer and/or Land Surveyor

N.M. 4002  
Certificate No.

BILL E. HAVER



*Bennett #1  
lat in pile  
stone with  
yellow flag*

1

ROAD CLASSIFICATION