

NO. OF COPIES RECEIVED	
DISTRIBUTION	
SANTA FE	
FILE	✓
U.S.G.S.	
LAND OFFICE	
OPERATOR	

NEW MEXICO OIL CONSERVATION COMMISSION

API # 30-033-20047

Form C-101
Revised 1-1-65

5A. Indicate Type of Lease STATE <input type="checkbox"/> FEE <input checked="" type="checkbox"/>
5. State Oil & Gas Lease No.
7. Unit Agreement Name
8. Farm or Lease Name Sanford Estate, etal
9. Well No. 1
10. Field and Pool, or Wildcat Wildcat
12. County Mora
19. Proposed Depth 3600
19A. Formation Granite Wash
20. Rotary or C.T. Rotary
21. Elevations (Show whether DF, RT, etc.) 6100'
21A. Kind & Status Plug. Bond Blanket/on file
21B. Drilling Contractor Aztec Drlg. Co.
22. Approx. Date Work will start ASAP

APPLICATION FOR PERMIT TO DRILL, DEEPEN, OR PLUG BACK

1a. Type of Work
b. Type of Well OIL WELL <input type="checkbox"/> GAS WELL <input checked="" type="checkbox"/> OTHER CO ₂
DRILL <input checked="" type="checkbox"/> DEEPEN <input type="checkbox"/> PLUG BACK <input type="checkbox"/>
SINGLE ZONE <input checked="" type="checkbox"/> MULTIPLE ZONE <input type="checkbox"/>
2. Name of Operator Mobil Oil Corporation
3. Address of Operator 3 Greenway Plaza-East, Suite 800, Houston, Texas 77046
4. Location of Well UNIT LETTER F LOCATED 1900 FEET FROM THE North LINE AND 1700 FEET FROM THE West LINE OF SEC. 27 TWP. 20N RGE. 22E NMPM
23. PROPOSED CASING AND CEMENT PROGRAM

SIZE OF HOLE	SIZE OF CASING	WEIGHT PER FOOT	SETTING DEPTH	SACKS OF CEMENT	EST. TOP
14-3/4"	10-3/4"	33# H-40	0 -250	Circulate	Surface
9-1/2"	7-5/8"	29.5#	0 -1600	Circulate	Surface
6-3/4"	4-1/2"	9.5# K-55	0 -3600	Circulate	1200'

BLOWOUT PREVENTER PROGRAM:

Casing String	Equip. Size & API Series	No & Type	Test Pressure PSI
Surface	8" 600	IMG & IPR	3000

*Oil Conservation Commission
Mora County, New Mexico
RECEIVED
FEBRUARY 27 1978*

*APPROVED
FOR THE STATE ENGINEER
BY THE STATE ENGINEER
EXPIRES 2-27-78*

IN ABOVE SPACE DESCRIBE PROPOSED PROGRAM; IF PROPOSAL IS TO DEEPEN OR PLUG BACK, GIVE DATA ON PRESENT PRODUCTIVE ZONE AND PROPOSED NEW PRODUCTIVE ZONE. GIVE BLOWOUT PREVENTER PROGRAM, IF ANY.

I hereby certify that the information above is true and complete to the best of my knowledge and belief.
Signed A.D. Bond A.D. Bond Title Reg. Engr. Coordinator Date 11-23-77

(This space for State Use)

APPROVED BY Carl Ulvog TITLE SENIOR PETROPHYSICIAN GEOLOGIST DATE 12-1-77

CONDITIONS OF APPROVAL, IF ANY:

NEW MEXICO OIL CONSERVATION COMMISSION
WELL LOCATION AND ACREAGE DEDICATION PLAT

Form C-102
Supersedes C-128
Effective 1-1-65

All distances must be from the outer boundaries of the Section.

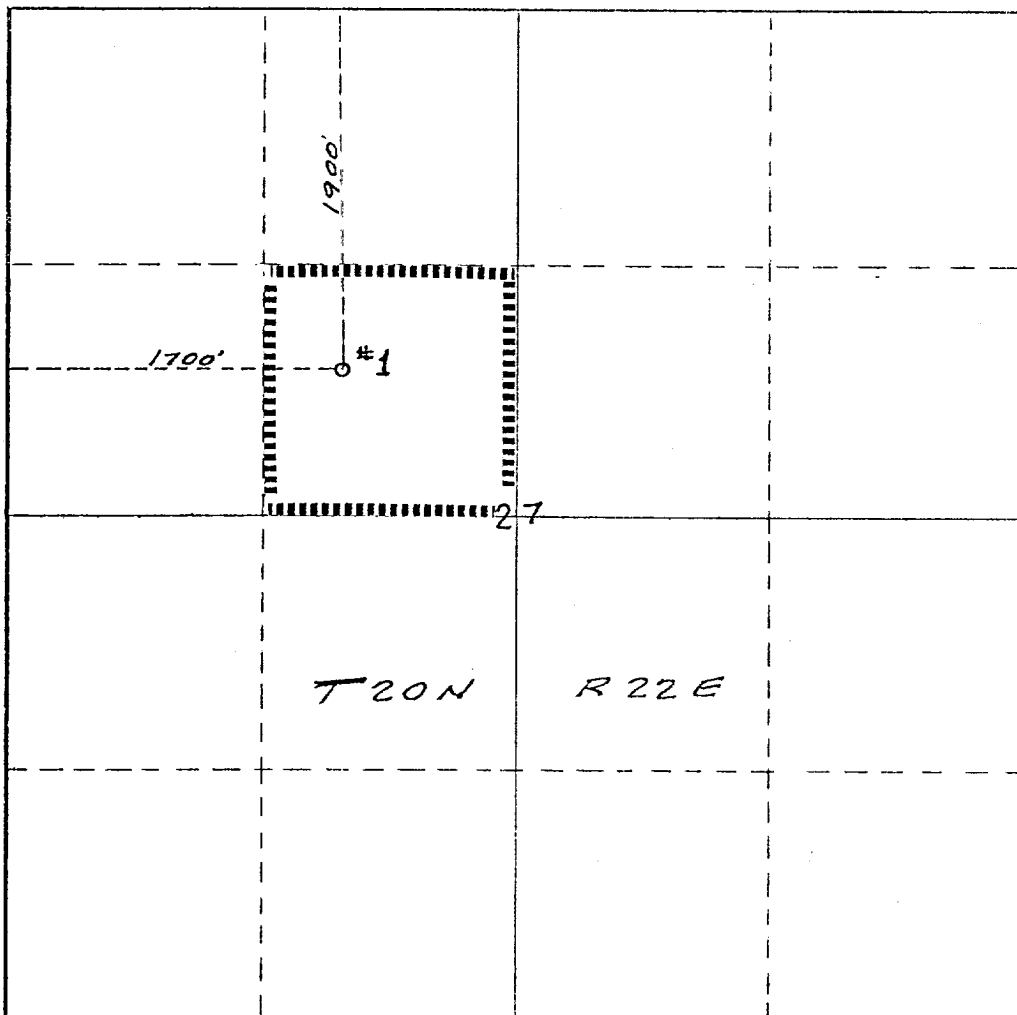
Operator Mobil Oil Corporation		Lease Sanford Estate, et al			Well No. 1
Unit Letter F	Section 27	Township 20N	Range 22E	County Mora	
Actual Footage Location of Well: 1900 feet from the North line and 1700 feet from the West line					
Ground Level Elev. 6100'	Producing Formation Granite Wash		Pool Wildcat	Dedicated Acreage: 40 Acres	

1. Outline the acreage dedicated to the subject well by colored pencil or hachure marks on the plat below.
2. If more than one lease is dedicated to the well, outline each and identify the ownership thereof (both as to working interest and royalty).
3. If more than one lease of different ownership is dedicated to the well, have the interests of all owners been consolidated by communitization, unitization, force-pooling, etc?

Yes No If answer is "yes," type of consolidation _____

If answer is "no," list the owners and tract descriptions which have actually been consolidated. (Use reverse side of this form if necessary.) _____

No allowable will be assigned to the well until all interests have been consolidated (by communitization, unitization, forced-pooling, or otherwise) or until a non-standard unit, eliminating such interests, has been approved by the Commission.



CERTIFICATION

I hereby certify that the information contained herein is true and complete to the best of my knowledge and belief.

A.D. Bond

Name
A.D. Bond
Position
Reg. Engr. Coordinator

Company
Mobil Oil Corporation

Date
November 23, 1977

I hereby certify that the well location shown on this plat was plotted from field notes of actual surveys made by me or under my supervision, and that the same is true and correct to the best of my knowledge and belief.

Date Surveyed
November 23, 1977

Registered Professional Engineer and/or Land Surveyor

C.A. Callaway

Certificate No.

3342

