

OIL CONSERVATION DIVISION

P. O. BOX 2088

SANTA FE, NEW MEXICO 87501

Form C-101  
Revised 10-1-78

NO. OF COPIES RECEIVED	
DISTRIBUTION	
SANTA FE	
FILE	✓
U.S.G.S.	
LAND OFFICE	
OPERATOR	

APL # 30-037-20037

5A. Indicate Type of Lease  
STATE  FEE   
5. State Oil & Gas Lease No.

APPLICATION FOR PERMIT TO DRILL, DEEPEN, OR PLUG BACK

1a. Type of work  
b. Type of Well DRILL  DEEPEN  PLUG BACK   
OIL WELL  GAS WELL  CO2 OTHER   
SINGLE ZONE  MULTIPLE ZONE

2. Name of Operator  
Amoco Production Company

3. Address of Operator  
P. O. Box 606, Clayton, New Mexico 88415

4. Location of well  
UNIT LETTER J LOCATED 1980 FEET FROM THE South LINE  
AND 1980 FEET FROM THE East LINE OF SEC. 28 TWP. 17N RGE. 36E NMPM

7. Unit Agreement Name  
BDCDGU

8. Form of Lease Name  
BDCDGU

9. Well No.  
1736 281J

10. Field and Pool, or Wildcat Area  
Bravo Dome 640 Acre Area

12. County  
Quay

19. Proposed Depth  
2900'

15A. Formation  
Tubb

20. Method of C.T.  
Rotary

21. Deviations (show whether DF, HI, etc.)  
4325' GL

21A. Kind & Status Plug. bond  
Blanket-on-file

21B. Drilling Contractor  
N/A

22. Approx. Date work will start  
October, 1984

PROPOSED CASING AND CEMENT PROGRAM

SIZE OF HOLE	SIZE OF CASING	WEIGHT PER FOOT	SETTING DEPTH	SACKS OF CEMENT	EST. TOP
12-1/4"	9-5/8"	32.30#	700'	Circulate	surface
8-3/4"	7"	15, 20#	2900'	Tieback to 9-5/8"	surface

Propose to drill and equip well in the Tubb formation. After reaching TD logs will be run and evaluated. Perforate and stimulate as necessary in attempting commercial production.

Mud Program: 0 - 700' Native Spud Mud  
700 - TD KCL Salt Water Gel-Starch

BOP Diagram attached. APPROVAL VALID FOR 180 DAYS  
PERMIT EXPIRES 4-30-85  
UNLESS DRILLING UNDERWAY

0+5-NMOCDSF 1-J. R. Barnettt, HOU Rm. 21.156 1-F. J. Nash, HOU Rm. 4.206 1-WF, C 1-WF,  
1-Susp, 1-JSM, 1-Amerada 1-Amerigas 1-Cities Service 1-Conoco 1-CO2 in Action 1-Sun  
1-Excelsior 1-Exxon

4. ABOVE SPACE DESCRIBE PROPOSED PROGRAM IF PROPOSAL IS TO DEEPEN OR PLUG BACK, GIVE DATA ON PRESENT PRODUCTIVE ZONE AND PROPOSED NEW PRODUCTIVE ZONE. GIVE BLOWOUT PREVENTER PROGRAM, IF ANY.

Hereby certify that the information above is true and complete to the best of my knowledge and belief.

Signed John S. McElya Title Assist. Admin. Analyst Date 10-16-84

PROVED BY [Signature] TITLE DISTRICT SUPERVISOR DATE 10-22-84

CONDITIONS OF APPROVAL, IF ANY:

NEW MEXICO OIL CONSERVATION COMMISSION  
WELL LOCATION AND ACREAGE DEDICATION PLAT

Form C-102  
Supersedes C-128  
Effective 1-1-85

All distances must be from the outer boundaries of the Section

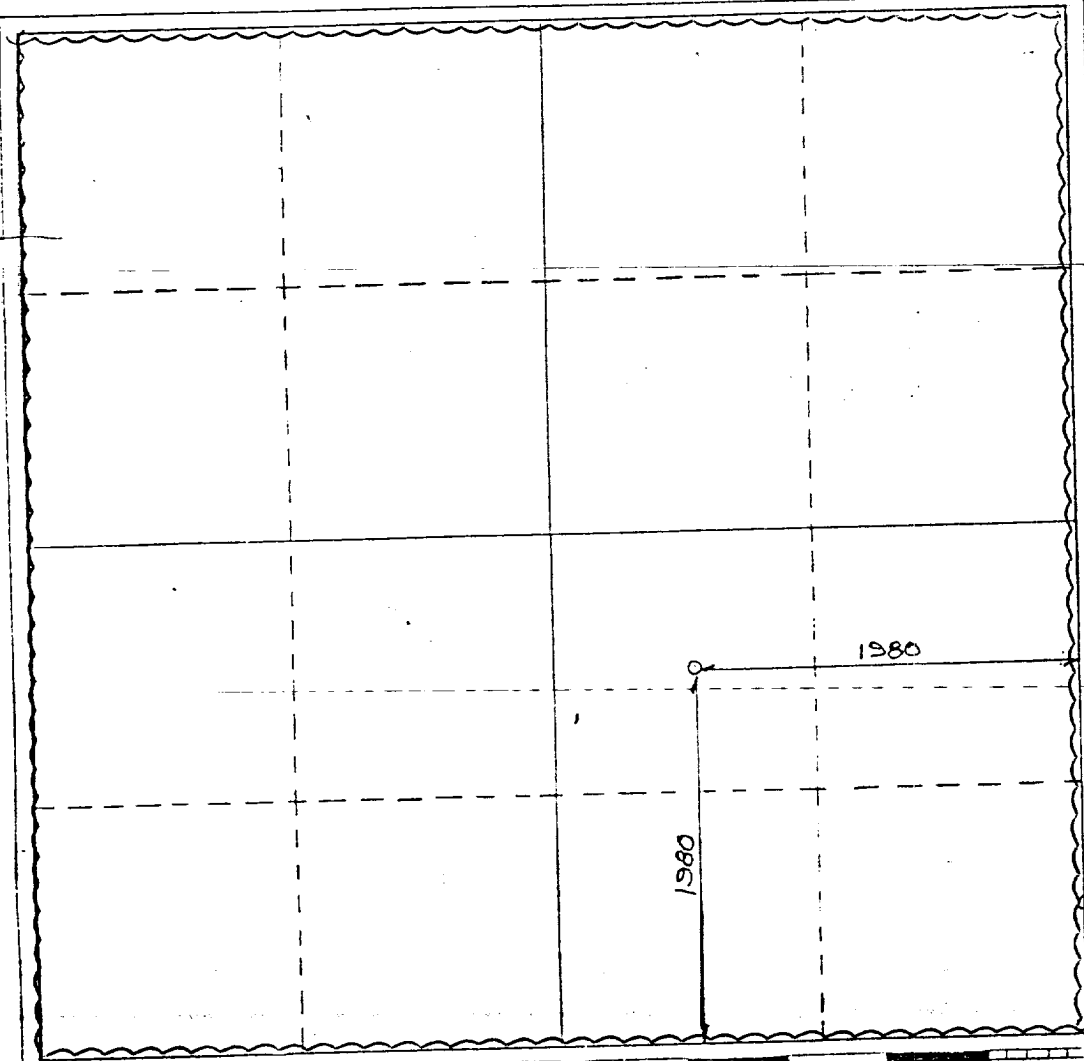
Operator: <b>AMOCO PRODUCTION COMPANY</b>		Lease: <b>BRAVO DOME CARBON DIOXIDE GAS UNIT</b>			Well No. <b>1736 281J</b>
Unit Letter <b>J</b>	Section <b>28</b>	Township <b>T17N</b>	Range <b>R36E</b>	County <b>QUAY</b>	
Actual Footage Location of Well: <b>1980</b> feet from the <b>SOUTH</b> line and <b>1980</b> feet from the <b>EAST</b> line					
Ground Level Elev. <b>4325</b>	Producing Formation: <b>TUBB</b>		Pool: <b>BRAVO DOME 640-ACRE AREA</b>	Dedicated Acreage: <b>640</b> Acres	

1. Outline the acreage dedicated to the subject well by colored pencil or hachure marks on the plat below.
2. If more than one lease is dedicated to the well, outline each and identify the ownership thereof (both as to working interest and royalty).
3. If more than one lease of different ownership is dedicated to the well, have the interests of all owners been consolidated by communitization, unitization, force-pooling, etc?

Yes     No    If answer is "yes," type of consolidation Unitization

If answer is "no," list the owners and tract descriptions which have actually been consolidated. (Use reverse side of this form if necessary.) \_\_\_\_\_

No allowable will be assigned to the well until all interests have been consolidated (by communitization, unitization, forced-pooling, or otherwise) or until a non-standard unit, eliminating such interests, has been approved by the Commission.



CERTIFICATION

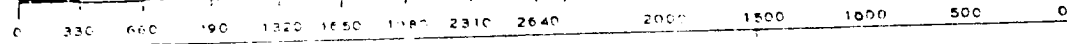
I hereby certify that the information contained herein is true and complete to the best of my knowledge and belief.

Name: John S. McEliza  
 Position: Asst. Adm. Analyst  
 Company: Amoco Production Company  
 Date: October 16, 1984

I hereby certify that the well location shown on this plat was plotted from field notes of actual surveys made by me or under my supervision, and that the same is true and correct to the best of my knowledge and belief.

OCT. 8, 1984

Date Surveyed: OCT. 8, 1984  
 Registered Professional Engineer and Land Surveyor  
 N. M. L. S. No. 5103  
 Certificate No. 5103  
 J. P. SHIELDS



STANDARD 2000 PSI W.P. BOP STACK

1. Blow-out preventers may be manually operated.
2. All equipment must be in good condition, 2,000 psi W.P. (4,000 psi test) minimum.
3. Bell nipple above blow-out preventer shall be same size as casing being drilled through.
4. Kelly cock to be installed on kelly.
5. Full opening safety valve 2,000 psi w.p. (4,000 psi test) minimum must be available on rig floor at all times with proper connection or subs to fit any tool joint in string.
6. Spool or cross may be eliminated if connections are available in the lower part of the blow-out preventer body.
7. Double or space saver type preventers may be used in lieu of two single preventers.
8. BOP rams to be installed as follows:
  - Top preventer - Drill pipe or casing rams
  - Bottom preventer - Blind rams

\*Amoco District Superintendent may reverse location of rams.
9. Extensions and hand wheels to be installed and braced at all times.
10. Manifold valves may be gate or plug metal to metal seal 2" minimum.

