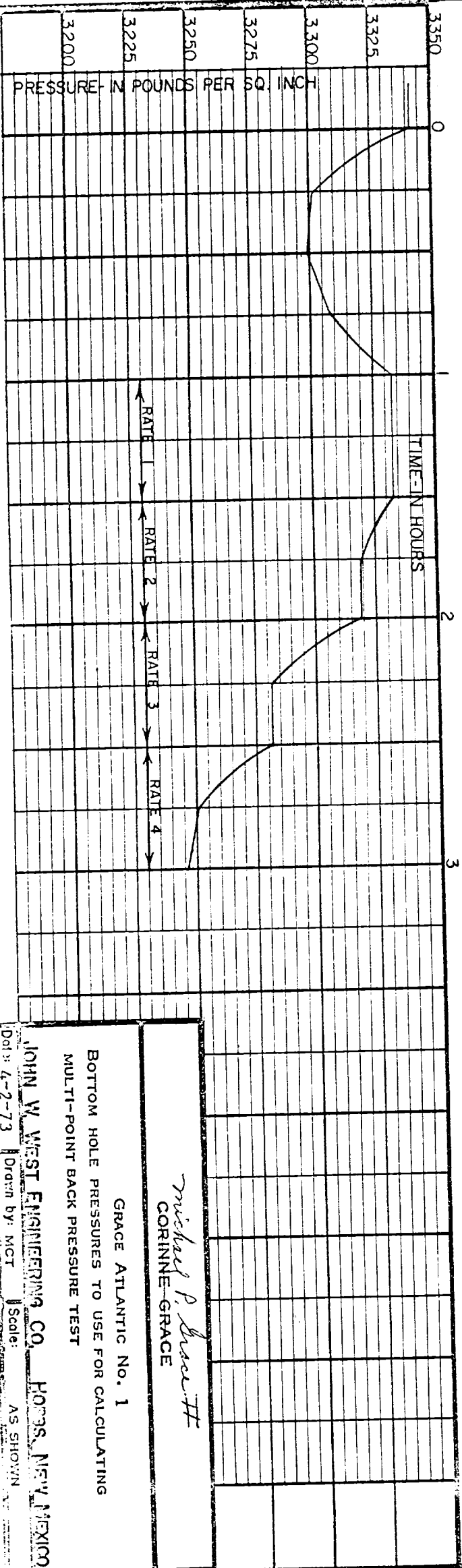


TEST DATE: MARCH 29, 1973  
 TEST DEPTH: 11,500 FEET

ELEMENT NO.: 8534  
 RANGE: 0-5600 P S I  
 CLOCK NO.: 11782  
 RANGE: 0-24 HOUR

NOTE: SEE TABULATION OF PRESSURE AND TIME ON ATTACHED SHEET.



*Michael P. Grace*  
 CORINNE-GRACE

GRACE ATLANTIC No. 1

BOTTOM HOLE PRESSURES TO USE FOR CALCULATING  
 MULTI-POINT BACK PRESSURE TEST

JOHN W. WEST ENGINEERING CO. HOORS, NEW MEXICO  
 Date: 4-2-73 Drawn by: MCT Scale: AS SHOWN