

NEW MEXICO OIL CONSERVATION COMMISSION  
WELL LOCATION AND ACREAGE DEDICATION PLAT

Form C-192  
Supersedes C-128  
Effective 1-1-65

All distances must be from the outer boundaries of the Section

CITIES SERVICE OIL COMPANY			Lease TRACY "B" Com.		Well No. 1
Section 18	Township 22 SOUTH	Range 27 EAST	County EDDY		
Approximate Location of Well 2045 feet from the SOUTH line and 479 feet from the EAST line					
Ground Elev. 3107.6	Producing Formation Morrow	Pool Undesignated Morrow	Dedicated Acreage 320		

- Outline the acreage dedicated to the subject well by colored pencil or hachure marks on the plat below.
- If more than one lease is dedicated to the well, outline each and identify the ownership thereof (both as to working interest and royalty).
- If more than one lease of different ownership is dedicated to the well, have the interests of all owners been consolidated by communitization, unitization, force-pooling, etc?

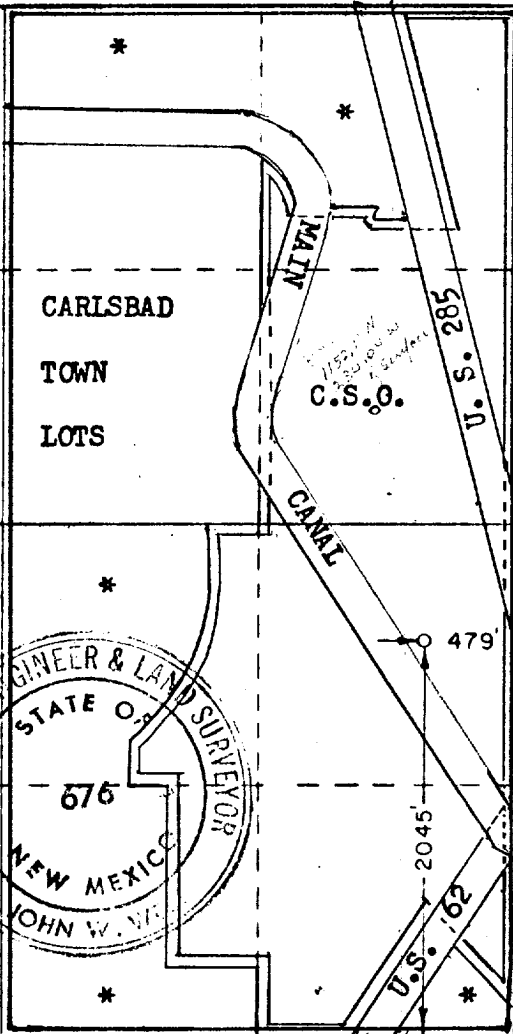
Yes  No If answer is "yes," type of consolidation Unitization & Force Pooling

If answer is "no," list the owners and tract descriptions which have actually been consolidated. (Use reverse side of this form if necessary.)

No allowable will be assigned to the well until all interests have been consolidated (by communitization, unitization, forced-pooling, or otherwise) or until a non-standard unit, eliminating such interests, has been approved by the Commission.

Participating companies and individuals in this well are as follows:

Cities Service Oil	59.3119%
R. C. Bennett	17.1368%
Michael Grace	8.8221%
Belco Petro. Corp.	7.2445%
E. C. Paine, Indivd. & Attorney-in-fact	1.7565%
R. G. Barton, Jr. & E. L. Latham, Jr.	.7692%
Joe Don Cook	.0422%
Dan L. Hannifin	.0413%
Various Unleased Mineral Interests	4.8755%
	<u>100.0000%</u>



\* Carlsbad Town Lots

CERTIFICATION

I hereby certify that the information contained herein is true and complete to the best of my knowledge and belief.

Name E. Spaulder  
 Position Region Operation Manager  
 Company Cities Service Oil Company  
 Date November 5, 1974

I hereby certify that the well location shown on this plat was plotted from field notes of actual surveys made by me or under my supervision, and that the same is true and correct to the best of my knowledge and belief.

Date Surveyed AUGUST 17, 1974

Registered Professional Engineer and/or Land Surveyor

John W. West  
 Certificate No. 676