

# *Basin Environmental Service Technologies, LLC*

3100 Plains Highway  
P. O. Box 301  
Lovington, New Mexico 88260

**jwlowry@basinenv.com**

Office: (575) 396-2378

Fax: (575) 396-1429



## **REMEDIATION SUMMARY & SITE CLOSURE REQUEST**

**SOUTHERN UNION GAS SERVICES**

**TRUNK "O" LINE (MEYERS)**

**Lea County, New Mexico**

**Unit Letter "C" (NE/NW), Section 35, Township 23 South, Range 36 East**

**Latitude 32° 16.005' North, Longitude 103° 14.375' West**

**NMOCD Reference # 1RP 03-11-2695**

Prepared For:

Southern Union Gas Services  
801 S. Loop 464  
Monahans, TX 79756

Prepared By:

Basin Environmental Service Technologies, LLC  
3100 Plains Highway  
Lovington, New Mexico 88260

**December 2012**

---

Joel W. Lowry  
Project Manager

## TABLE OF CONTENTS

1.0 INTRODUCTION.....	1
2.0 NMOC SITE CLASSIFICATION.....	1
3.0 SUMMARY OF SOIL REMEDIATION ACTIVITIES.....	2
4.0 QA/QC PROCEDURES.....	3
4.1 Soil Sampling.....	3
4.2 Decontamination of Equipment.....	3
4.3 Laboratory Protocol.....	3
5.0 SITE CLOSURE REQUEST.....	3
6.0 LIMITATIONS.....	4
7.0 DISTRIBUTION.....	5

## FIGURES

Figure 1 – Site Location Map

Figure 2 – Site & Sample Location Map

## TABLES

Table 1 – Concentrations of Benzene, BTEX, TPH & Chloride in Soil

## APPENDICES

Appendix A – Photographs

Appendix B – Laboratory Analytical Reports

Appendix C – Disposal Manifest

Appendix D – Release Notification and Corrective Action (Form C-141)

## **1.0 INTRODUCTION & BACKGROUND INFORMATION**

Basin Environmental Service Technologies, LLC (Basin), on behalf of Southern Union Gas Services (Southern Union), has prepared this *Remediation Summary & Site Closure Request* for the release site known as Trunk “O” Line (Meyers) Historical. The legal description of the release site is Unit Letter “C” (NE/NW), Section 35, Township 23 South, Range 36 East, in Lea County, New Mexico. The geographic coordinates of the release site are 32° 16.005' North latitude and 103° 14.375' West longitude. The property affected by the release is owned by Mr. Kelly Meyers. Please reference Figure 1 for a "Site Location Map".

On March 19, 2011, Southern Union discovered a release had occurred on the Trunk “O” Pipeline. The “Release Notification and Corrective Action” (Form C-141) indicated failure of a section of natural gas pipeline operating at thirty-five (35) PSI resulted in the release of approximately ten barrels (10 bbls) of a mixture of crude oil and produced water and nine hundred (900) Mcf of natural gas. During initial response activities the leak was excavated and the affected area was repaired. The affected segment of pipeline has since been replaced. The release was reported to the New Mexico Oil Conservation Division (NMOCD) Hobbs District Office on March 23, 2011. The release was largely airborne, affecting an area measuring three hundred feet (300') by one hundred fifty feet (150'). General photographs of the release site are provided as Appendix A. The Form C-141 is provided as Appendix D.

## **2.0 NMOCD SITE CLASSIFICATION**

A search of the New Mexico Water Rights Reporting System (NMWRRS) database maintained by the New Mexico Office of the State Engineer (NMOSE) indicated information was unavailable for Section 35, Township 23 South, Range 36 East. A depth to groundwater reference map utilized by the NMOCD indicates groundwater should be encountered at approximately one hundred thirty-five feet (135') below ground surface (bgs). Based on the NMOCD ranking system, zero (0) points will be assigned to the site as a result of this criterion.

A search of the NMWRRS database indicated there are no water wells within one thousand feet (1,000') of the release. Based on the NMOCD ranking system, zero (0) points will be assigned to the site as a result of this criterion.

There are no surface water bodies within one thousand feet (1,000') of the release. Based on the NMOCD ranking system, zero (0) points will be assigned to the site as a result of this criterion.

NMOCD guidelines indicate the Trunk “O” Line (Meyers) release site has an initial ranking score of ten (10) points. The soil remediation levels for a site with a ranking score of zero (0) points are as follows:

- Benzene – 10 mg/Kg (ppm)
- BTEX – 50 mg/Kg (ppm)
- TPH – 5,000 mg/Kg (ppm)

The New Mexico Administrative Code (NMAC) does not currently specify a remediation level for chloride concentrations in soil. Chloride remediation levels are set by the NMOCD on a site-specific basis.

### **3.0 SUMMARY OF SOIL REMEDIATION ACTIVITIES**

On November 5, 2012, Basin began delineation activities at the release site. During the initial investigation eight (8) surface soil samples (SP#1, SP#2, SP#3, SP#4, SP#5, SP#18, SP#19 and SP#20) were collected from within the visibly impacted area and field-screened for concentrations of chloride using Hach Quantab<sup>®</sup> chloride test strips. Chloride field test results indicated chloride concentrations were less than 120 ppm for each of the soil samples. Approximately six inches (6") of soil was scraped from the surface in the area characterized by dead vegetation.

On November 5 and 6, 2012 Basin collected sixteen (16) confirmation soil samples (SP#3 @ Surface, SP#6 @ 2', SP#7 @ 2', SP#8 @ 2', SP#9 @ 2', SP#10 @ 2', SP#11 @ 2', SP#12 @ 2', SP#13 @ 2', SP#14 @ 2', SP#15 @ 2', SP#15 @ 4', SP#16 @ 2', SP#17 @ 2', SP#21 @ 2' and SP#22 @ 2') from a series evenly spaced test trenches within the excavated area. Collected soil samples were submitted to Xenco Laboratories Inc., of Odessa, Texas, for analysis of chloride concentrations in accordance with EPA Method 300.1. Laboratory analytical results indicated chloride concentrations ranged from 9.24 mg/Kg for soil sample SP#17 @ 2' to 66.2 mg/Kg for soil sample SP#6 @ 2'. Soil samples SP#3 @ Surface, SP#8 @ 2', SP#12 @ 2', SP#13 @ 2', SP#14 @ 2', SP#15 @ 2', SP#16 @ 2', SP#17 @ 2' and SP#21 @ 2' we also analyzed for concentrations of total petroleum hydrocarbons (TPH) in accordance with EPA Method SW-846 8015M. Laboratory analytical results indicated TPH concentrations were less than the laboratory method detection limit (MDL) for each of the soil samples submitted. Soil sample SP#15 @ 2' was also analyzed for benzene, toluene, ethylbenzene and xylene (BTEX) in accordance with EPA Method SW-846 8021b. Analytical results indicated BTEX constituent concentrations were less than the appropriate laboratory MDL for soil sample SP#15 @ 2'. Table 1 summarizes the "Concentrations of Benzene, BTEX, TPH & Chloride in Soil". Soil sample locations are depicted in Figure 2, "Site & Sample Location Map". Laboratory analytical reports are provided as Appendix B.

Between November 11 and 12, 2012, approximately one hundred forty-four cubic yards (144 yd<sup>3</sup>) of impacted material was transported to Sundance Services, Inc. (NMOCD Permit # 01-0003) for disposal. Copies of disposal manifests are provided as Appendix C.

On November 23, 2012, on receiving approval from an NMOCD representative, the excavation was backfilled with locally purchased, non-impacted material. Prior to backfilling, the final dimensions of the excavation were approximately one hundred sixty-two (120') in length, ninety-three feet (93') in width, and approximately six inches (6") in depth. Excavation backfill was contoured to fit the surrounding topography and will be reseeded at the request of the landowner.



## **4.0 QA/QC PROCEDURES**

### **4.1 Soil Sampling**

Soil samples were delivered to Xenco Laboratories, Inc., of Odessa, Texas, for BTEX, TPH, and/or chloride analyses using the methods described below:

- BTEX concentrations in accordance with EPA Method SW-846 8021b
- TPH concentrations in accordance with modified EPA Method SW-846 8015M
- Chloride concentrations in accordance with EPA Method 300.1

### **4.2 Decontamination of Equipment**

Cleaning of the sampling equipment was the responsibility of the environmental technician. Prior to use, and between each sample, the sampling equipment was cleaned with Liqui-Nox® detergent and rinsed with distilled water.

### **4.3 Laboratory Protocol**

The laboratory was responsible for proper QA/QC procedures after signing the chain-of-custody form(s). These procedures were either transmitted with the laboratory reports or are on file at the laboratory.

## **5.0 SITE CLOSURE REQUEST**

Confirmation soil samples collected from the Trunk “O” Line (Meyers) release site were analyzed by an NMOCD-approved laboratory, which determined concentrations of benzene, BTEX, TPH and chloride were less than the regulatory remediation action levels established for the site. Based on these laboratory analytical results, Basin recommends Southern Union provide the NMOCD Hobbs District Office a copy of this *Remediation Summary & Site Closure Request* and request the NMOCD grant site closure to the Trunk “O” Line (Meyers) release site.

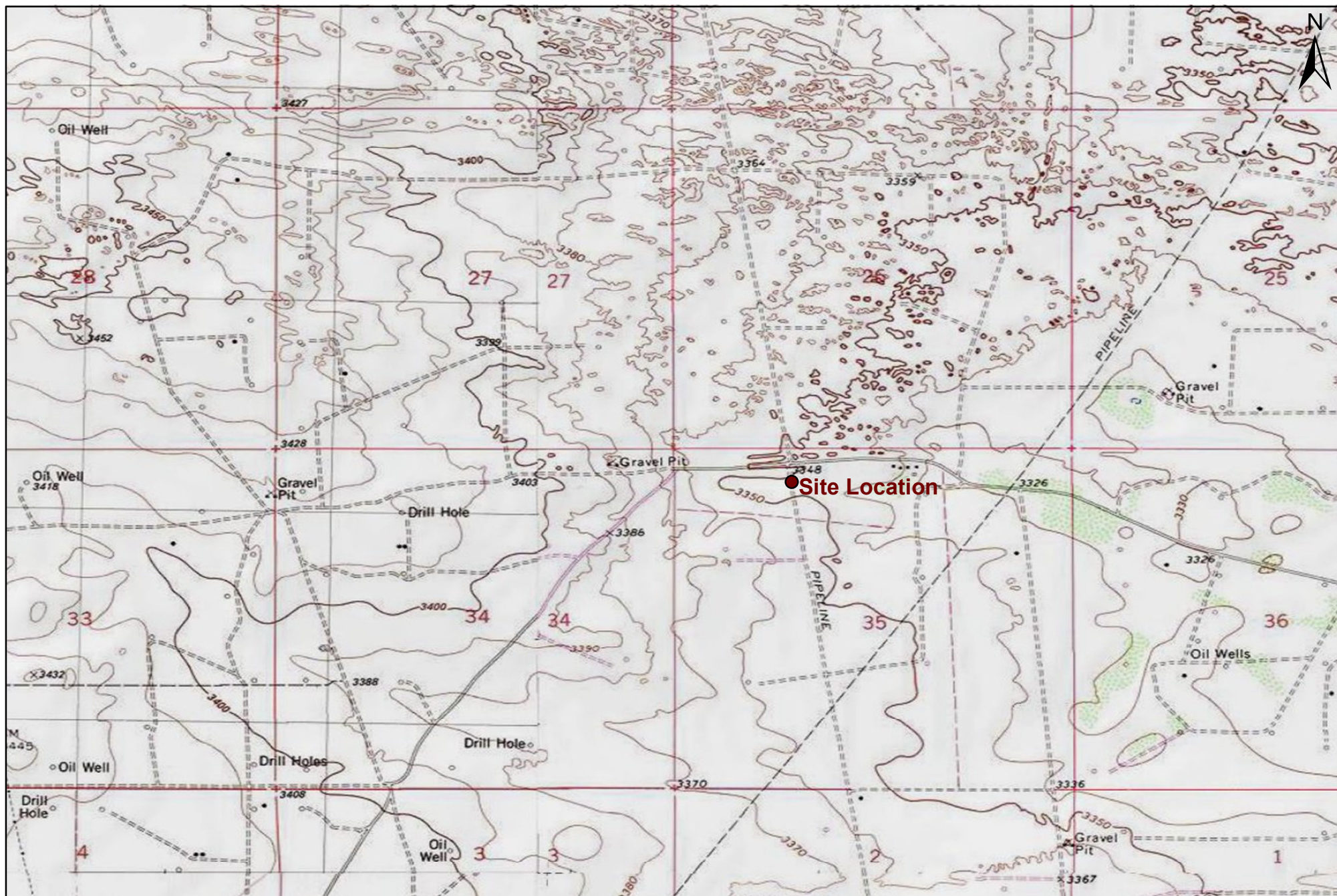
## 6.0 LIMITATIONS

Basin Environmental Service Technologies, LLC, has prepared this *Remediation Summary & Site Closure Request* to the best of its ability. No other warranty, expressed or implied, is made or intended. Basin has examined and relied upon documents referenced in the report and on oral statements made by certain individuals. Basin has not conducted an independent examination of the facts contained in referenced materials and statements. Basin has presumed the genuineness of these documents and statements and that the information provided therein is true and accurate. Basin has prepared this report in a professional manner, using the degree of skill and care exercised by similar environmental consultants. Basin notes that the facts and conditions referenced in this report may change over time, and the conclusions and recommendations set forth herein are applicable only to the facts and conditions as described at the time of this report.

This report has been prepared for the benefit of Southern Union Gas Services. The information contained in this report, including all exhibits and attachments, may not be used by any other party without the express consent of Basin Environmental Service Technologies, LLC, and/or Southern Union Gas Services.

## **7.0 DISTRIBUTION:**

- Copy 1:        Geoffrey Leking  
                 New Mexico Energy, Minerals and Natural Resources Department  
                 Oil Conservation Division (District 1)  
                 1625 French Drive  
                 Hobbs, NM 88240  
                 GeoffreyR.Leking@state.nm.us
- Copy 2:        Rose Slade  
                 Southern Union Gas Services  
                 801 S. Loop 464  
                 Monahans, Texas 79756  
                 rose.slade@sug.com
- Copy 3:        Basin Environmental Service Technologies, LLC  
                 P.O. Box 301  
                 Lovington, New Mexico 88260



1,000 500 0 1,000 2,000  
 Distance in Feet

**Figure 1**  
**Site Location Map**  
 Southern Union Gas Services  
 Trunk "O" Meyers  
 Lea County, New Mexico  
 NMOCD Reference #: 1RP-2695

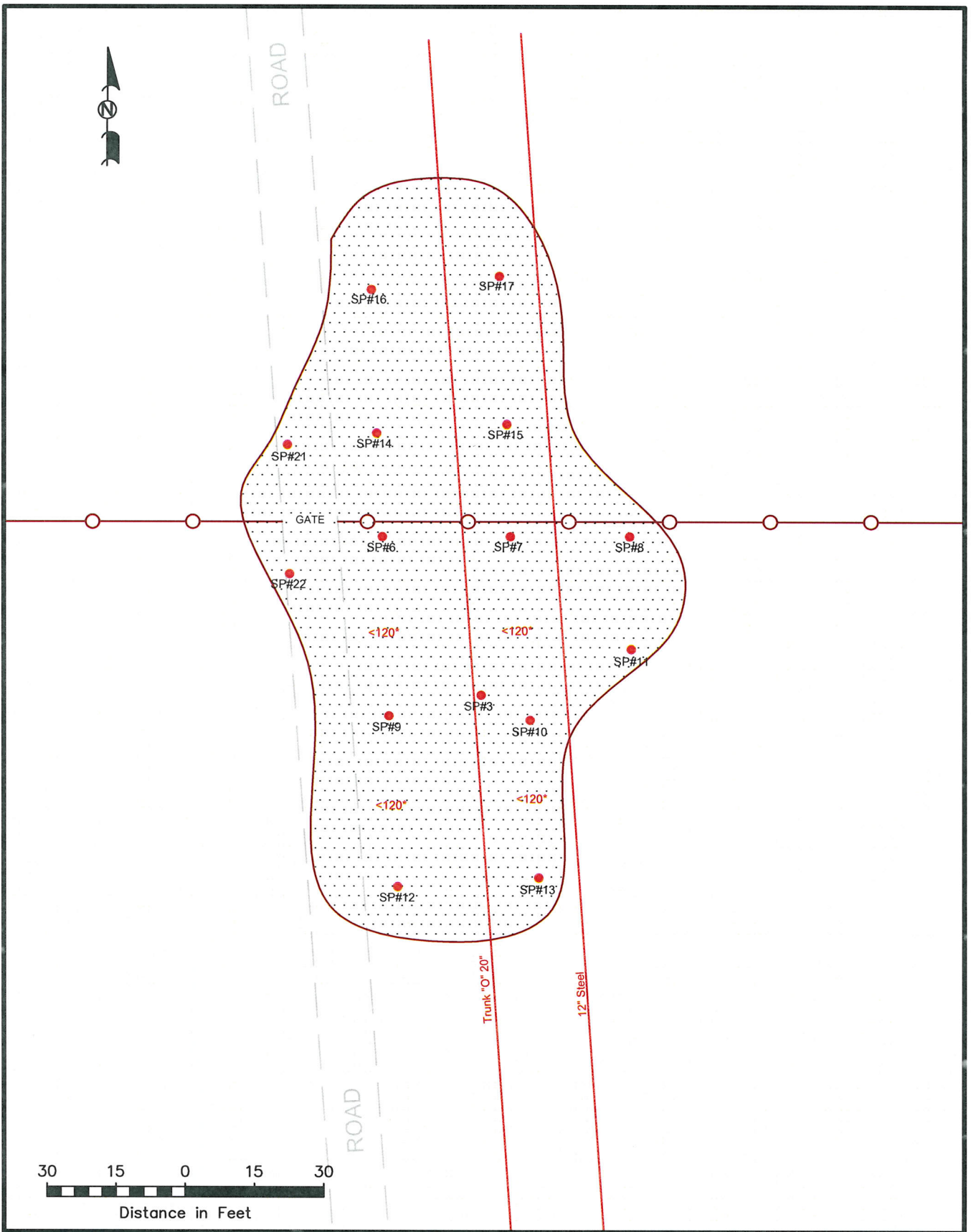


Basin Environmental Service Technologies, LLC  
 3100 Plains Hwy.  
 Lovington, NM 88260

Drawn By: BJA      Checked By: JWL

November 12, 2012      Scale: 1" = 2000'





**LEGEND:**

- Road
- Pipeline
- Fence
- Disturbed Area
- Sample Location
- <120" Cl- Field Test Result

**Figure 2**

**Site & Sample Location Map  
Southern Union Gas Services  
Trunk "O" Meyers (RP-2712)  
Lea County, NM**

**Basin Environmental Services**

Scale: 1" = 30'	Drawn By: JWL	Prepared By: BRB
November 8, 2012		

TABLE 1

## CONCENTRATIONS OF BENZENE, BTEX, TPH &amp; CHLORIDE IN SOIL

SOUTHERN UNION GAS SERVICES  
 TRUNK "O" LINE (MEYERS)  
 HISTORICAL RELEASE SITE  
 LEA COUNTY, NEW MEXICO  
 NMOCD REF# 1RP-2695

SAMPLE LOCATION	SAMPLE DEPTH (BGS)	SAMPLE DATE	SOIL STATUS	METHOD: EPA SW 846-8021B, 5030					METHOD: 8015M			TOTAL TPH C <sub>6</sub> -C <sub>35</sub> (mg/Kg)	METHOD: E300.0
				BENZENE (mg/Kg)	TOLUENE (mg/Kg)	ETHYL- BENZENE (mg/Kg)	TOTAL XYLENES (mg/Kg)	TOTAL BTEX (mg/Kg)	GRO C <sub>6</sub> -C <sub>12</sub> (mg/Kg)	DRO C <sub>12</sub> -C <sub>28</sub> (mg/Kg)	ORO C <sub>28</sub> -C <sub>35</sub> (mg/Kg)		CHLORIDE (mg/Kg)
SP#3 @ Surface	Surface	11/5/2012	Excavated	-	-	-	-	-	<15.6	<15.6	<15.6	<15.6	-
SP#6 @ 2'	2'	11/5/2012	In-Situ	-	-	-	-	-	-	-	-	-	66.2
SP#7 @ 2'	2'	11/5/2012	In-Situ	-	-	-	-	-	-	-	-	-	9.89
SP#8 @ 2'	2'	11/5/2012	In-Situ	-	-	-	-	-	<15.8	<15.8	<15.8	<15.8	21.5
SP#9 @ 2'	2'	11/5/2012	In-Situ	-	-	-	-	-	-	-	-	-	16.7
SP#10 @ 2'	2'	11/5/2012	In-Situ	-	-	-	-	-	-	-	-	-	14.1
SP#11 @ 2'	2'	11/5/2012	In-Situ	-	-	-	-	-	-	-	-	-	28.9
SP#12 @ 2'	2'	11/5/2012	In-Situ	-	-	-	-	-	<15.6	<15.6	<15.6	<15.6	18.3
SP#13 @ 2'	2'	11/5/2012	In-Situ	-	-	-	-	-	<15.9	<15.9	<15.9	<15.9	23.3
SP#14 @ 2'	2'	11/6/2012	In-Situ	-	-	-	-	-	<15.8	<15.8	<15.8	<15.8	30.3
SP#15 @ 2'	2'	11/6/2012	In-Situ	<0.00106	<0.00212	<0.00106	<0.00212	<0.00212	<15.9	<15.9	<15.9	<15.9	58.8
SP#15 @ 4'	4'	11/6/2012	In-Situ	-	-	-	-	-	-	-	-	-	11.7
SP#16 @ 2'	2'	11/6/2012	In-Situ	-	-	-	-	-	<15.6	<15.6	<15.6	<15.6	14.7
SP#17 @ 2'	2'	11/6/2012	In-Situ	-	-	-	-	-	<16.2	<16.2	<16.2	<16.2	9.24
SP#21 @ 2'	2'	11/6/2012	In-Situ	-	-	-	-	-	<15.8	<15.8	<15.8	<15.8	9.47
SP#22 @ 2'	2'	11/6/2012	In-Situ	-	-	-	-	-	-	-	-	-	11.4
NMOCD Standard				10				50				5,000	1,000

- = Not analyzed.

\* Denotes results by EPA Method 325.3

**Analytical Report 452203**  
**for**  
**Southern Union Gas Services- Monahans**

**Project Manager: Joel Lowry**

**Trunk "O" Myers**

**(RP-2695)**

**20-NOV-12**

Collected By: Client



**12600 West I-20 East Odessa, Texas 79765**

Xenco-Houston (EPA Lab code: TX00122):

Texas (T104704215-10-6-TX), Arizona (AZ0765), Arkansas (08-039-0), Connecticut (PH-0102), Florida (E871002)  
Illinois (002082), Indiana (C-TX-02), Iowa (392), Kansas (E-10380), Kentucky (45), Louisiana (03054)  
New Hampshire (297408), New Jersey (TX007), New York (11763), Oklahoma (9218), Pennsylvania (68-03610)  
Rhode Island (LAO00312), USDA (S-44102), DoD (L11-54)

Xenco-Atlanta (EPA Lab Code: GA00046):

Florida (E87429), North Carolina (483), South Carolina (98015), Kentucky (85), DoD ( L10-135)  
Louisiana (04176), USDA (P330-07-00105)

Xenco-Tampa Mobile (EPA Lab code: FL01212): Florida (E84900)

Xenco-Lakeland: Florida (E84098)

Xenco-Odessa (EPA Lab code: TX00158): Texas (T104704400-TX)

Xenco-Dallas (EPA Lab code: TX01468): Texas (T104704295-TX)

Xenco Phoenix (EPA Lab Code: AZ00901): Arizona(AZ0757)

Xenco-Phoenix Mobile (EPA Lab code: AZ00901): Arizona (AZM757)

Xenco Tucson (EPA Lab code:AZ000989): Arizona (AZ0758)



20-NOV-12

Project Manager: **Joel Lowry**  
**Southern Union Gas Services- Monahans**  
801 South Loop 464  
Monahans, TX 79756

Reference: XENCO Report No: **452203**  
**Trunk "O" Myers**  
Project Address: Lea County, NM

**Joel Lowry:**

We are reporting to you the results of the analyses performed on the samples received under the project name referenced above and identified with the XENCO Report Number 452203. All results being reported under this Report Number apply to the samples analyzed and properly identified with a Laboratory ID number. Subcontracted analyses are identified in this report with either the NELAC certification number of the subcontract lab in the analyst ID field, or the complete subcontracted report attached to this report.

Unless otherwise noted in a Case Narrative, all data reported in this Analytical Report are in compliance with NELAC standards. The uncertainty of measurement associated with the results of analysis reported is available upon request. Should insufficient sample be provided to the laboratory to meet the method and NELAC Matrix Duplicate and Matrix Spike requirements, then the data will be analyzed, evaluated and reported using all other available quality control measures.

The validity and integrity of this report will remain intact as long as it is accompanied by this letter and reproduced in full, unless written approval is granted by XENCO Laboratories. This report will be filed for at least 5 years in our archives after which time it will be destroyed without further notice, unless otherwise arranged with you. The samples received, and described as recorded in Report No. 452203 will be filed for 60 days, and after that time they will be properly disposed without further notice, unless otherwise arranged with you. We reserve the right to return to you any unused samples, extracts or solutions related to them if we consider so necessary (e.g., samples identified as hazardous waste, sample sizes exceeding analytical standard practices, controlled substances under regulated protocols, etc).

We thank you for selecting XENCO Laboratories to serve your analytical needs. If you have any questions concerning this report, please feel free to contact us at any time.

Respectfully,

---

**Nicholas Straccione**

Project Manager

***Recipient of the Prestigious Small Business Administration Award of Excellence in 1994.***

*Certified and approved by numerous States and Agencies.*

*A Small Business and Minority Status Company that delivers SERVICE and QUALITY*

Houston - Dallas - Odessa - San Antonio - Tampa - Lakeland - Atlanta - Phoenix - Oklahoma - Latin America



## Southern Union Gas Services- Monahans, Monahans, TX

Trunk "O" Myers

Sample Id	Matrix	Date Collected	Sample Depth	Lab Sample Id
SP#3 @ Surface	S	11-05-12 10:00	In	452203-001
SP#6 @ 2'	S	11-05-12 11:30		452203-002
SP#7 @ 2'	S	11-05-12 12:00		452203-003
SP#8 @ 2'	S	11-05-12 12:30		452203-004
SP#9 @ 2'	S	11-05-12 13:00		452203-005
SP#10 @ 2'	S	11-05-12 13:30		452203-006
SP#11 @ 2'	S	11-05-12 14:00		452203-007
SP#12 @ 2'	S	11-05-12 14:30		452203-008
SP#13 @ 2'	S	11-05-12 15:00		452203-009
SP#14 @ 2'	S	11-06-12 09:00		452203-010
SP#15 @ 2'	S	11-06-12 09:30		452203-011
SP#15 @ 4'	S	11-06-12 09:45		452203-012
SP#16 @ 2'	S	11-06-12 10:00		452203-013
SP#17 @ 2'	S	11-06-12 10:30		452203-014
SP#21 @ 2'	S	11-06-12 12:30		452203-015
SP#22 @ 2'	S	11-06-12 13:00		452203-016



## CASE NARRATIVE

*Client Name: Southern Union Gas Services- Monahans*

*Project Name: Trunk "O" Myers*



*Project ID: (RP-2695)*

*Work Order Number: 452203*

*Report Date: 20-NOV-12*

*Date Received: 11/09/2012*

---

***Sample receipt non conformances and comments:***

*None*

---

***Sample receipt non conformances and comments per sample:***

*None*

# Certificate of Analysis Summary 452203

## Southern Union Gas Services- Monahans, Monahans, TX



**Project Name: Trunk "O" Myers**

**Project Id:** (RP-2695)

**Contact:** Joel Lowry

**Project Location:** Lea County, NM

**Date Received in Lab:** Fri Nov-09-12 10:00 pm

**Report Date:** 20-NOV-12

**Project Manager:** Nicholas Straccione

<i>Analysis Requested</i>	<i>Lab Id:</i>	452203-001	452203-002	452203-003	452203-004	452203-005	452203-006
	<i>Field Id:</i>	SP#3 @ Surface	SP#6 @ 2'	SP#7 @ 2'	SP#8 @ 2'	SP#9 @ 2'	SP#10 @ 2'
	<i>Depth:</i>						
	<i>Matrix:</i>	SOIL	SOIL	SOIL	SOIL	SOIL	SOIL
	<i>Sampled:</i>	Nov-05-12 10:00	Nov-05-12 11:30	Nov-05-12 12:00	Nov-05-12 12:30	Nov-05-12 13:00	Nov-05-12 13:30
<b>Inorganic Anions by EPA 300/300.1 SUB: TX104704215</b>	<i>Extracted:</i>		Nov-12-12 13:21	Nov-12-12 13:53	Nov-12-12 14:09	Nov-12-12 14:25	Nov-12-12 14:41
	<i>Analyzed:</i>		Nov-12-12 13:21	Nov-12-12 13:53	Nov-12-12 14:09	Nov-12-12 14:25	Nov-12-12 14:41
	<i>Units/RL:</i>		mg/kg RL	mg/kg RL	mg/kg RL	mg/kg RL	mg/kg RL
Chloride			66.2 1.15	9.89 1.07	21.5 1.04	16.7 0.974	14.1 1.18
<b>Percent Moisture</b>	<i>Extracted:</i>						
	<i>Analyzed:</i>	Nov-12-12 15:40	Nov-16-12 13:00	Nov-16-12 13:00	Nov-12-12 15:40	Nov-16-12 13:00	Nov-16-12 13:00
	<i>Units/RL:</i>	% RL	% RL	% RL	% RL	% RL	% RL
Percent Moisture		3.67 1.00	6.01 1.00	6.71 1.00	5.39 1.00	4.05 1.00	5.92 1.00
<b>TPH By SW8015 Mod</b>	<i>Extracted:</i>	Nov-15-12 08:30			Nov-15-12 08:30		
	<i>Analyzed:</i>	Nov-15-12 12:13			Nov-15-12 12:47		
	<i>Units/RL:</i>	mg/kg RL			mg/kg RL		
C6-C12 Gasoline Range Hydrocarbons		ND 15.6			ND 15.8		
C12-C28 Diesel Range Hydrocarbons		ND 15.6			ND 15.8		
C28-C35 Oil Range Hydrocarbons		ND 15.6			ND 15.8		
Total TPH		ND 15.6			ND 15.8		

This analytical report, and the entire data package it represents, has been made for your exclusive and confidential use.  
The interpretations and results expressed throughout this analytical report represent the best judgment of XENCO Laboratories.  
XENCO Laboratories assumes no responsibility and makes no warranty to the end use of the data hereby presented.  
Our liability is limited to the amount invoiced for this work order unless otherwise agreed to in writing.

Houston - Dallas - San Antonio - Atlanta - Tampa - Boca Raton - Latin America - Odessa - Corpus Christi



Nicholas Straccione  
Project Manager

# Certificate of Analysis Summary 452203

## Southern Union Gas Services- Monahans, Monahans, TX



**Project Id:** (RP-2695)

**Contact:** Joel Lowry

**Project Name:** Trunk "O" Myers

**Date Received in Lab:** Fri Nov-09-12 10:00 pm

**Report Date:** 20-NOV-12

**Project Location:** Lea County, NM

**Project Manager:** Nicholas Straccione

<i>Analysis Requested</i>	<i>Lab Id:</i>	452203-007	452203-008	452203-009	452203-010	452203-011	452203-012
	<i>Field Id:</i>	SP#11 @ 2'	SP#12 @ 2'	SP#13 @ 2'	SP#14 @ 2'	SP#15 @ 2'	SP#15 @ 4'
	<i>Depth:</i>						
	<i>Matrix:</i>	SOIL	SOIL	SOIL	SOIL	SOIL	SOIL
	<i>Sampled:</i>	Nov-05-12 14:00	Nov-05-12 14:30	Nov-05-12 15:00	Nov-06-12 09:00	Nov-06-12 09:30	Nov-06-12 09:45
<b>BTEX by EPA 8021B</b>	<i>Extracted:</i>					Nov-20-12 08:30	
	<i>Analyzed:</i>					Nov-20-12 10:03	
	<i>Units/RL:</i>					mg/kg RL	
Benzene						ND 0.00106	
Toluene						ND 0.00212	
Ethylbenzene						ND 0.00106	
m_p-Xylenes						ND 0.00212	
o-Xylene						ND 0.00106	
Total Xylenes						ND 0.00106	
Total BTEX						ND 0.00106	
<b>Inorganic Anions by EPA 300/300.1 SUB: TX104704215</b>	<i>Extracted:</i>	Nov-12-12 14:57	Nov-12-12 15:46	Nov-12-12 16:02	Nov-12-12 16:18	Nov-12-12 16:34	Nov-12-12 16:50
	<i>Analyzed:</i>	Nov-12-12 14:57	Nov-12-12 15:46	Nov-12-12 16:02	Nov-12-12 16:18	Nov-12-12 16:34	Nov-12-12 16:50
	<i>Units/RL:</i>	mg/kg RL	mg/kg RL	mg/kg RL	mg/kg RL	mg/kg RL	mg/kg RL
Chloride		28.9 0.979	18.3 1.09	23.3 1.01	30.3 1.05	58.8 1.16	11.7 1.13
<b>Percent Moisture</b>	<i>Extracted:</i>						
	<i>Analyzed:</i>	Nov-16-12 13:00	Nov-12-12 15:40	Nov-12-12 15:40	Nov-12-12 15:40	Nov-12-12 15:40	Nov-16-12 13:00
	<i>Units/RL:</i>	% RL	% RL	% RL	% RL	% RL	% RL
Percent Moisture		5.46 1.00	4.13 1.00	5.52 1.00	5.21 1.00	5.56 1.00	3.54 1.00
<b>TPH By SW8015 Mod</b>	<i>Extracted:</i>		Nov-15-12 08:30	Nov-15-12 08:30	Nov-15-12 08:30	Nov-15-12 08:30	
	<i>Analyzed:</i>		Nov-15-12 13:16	Nov-15-12 13:51	Nov-15-12 14:20	Nov-15-12 14:53	
	<i>Units/RL:</i>		mg/kg RL	mg/kg RL	mg/kg RL	mg/kg RL	
C6-C12 Gasoline Range Hydrocarbons			ND 15.6	ND 15.9	ND 15.8	ND 15.9	
C12-C28 Diesel Range Hydrocarbons			ND 15.6	ND 15.9	ND 15.8	ND 15.9	
C28-C35 Oil Range Hydrocarbons			ND 15.6	ND 15.9	ND 15.8	ND 15.9	
Total TPH			ND 15.6	ND 15.9	ND 15.8	ND 15.9	

This analytical report, and the entire data package it represents, has been made for your exclusive and confidential use. The interpretations and results expressed throughout this analytical report represent the best judgment of XENCO Laboratories. XENCO Laboratories assumes no responsibility and makes no warranty to the end use of the data hereby presented. Our liability is limited to the amount invoiced for this work order unless otherwise agreed to in writing.

Houston - Dallas - San Antonio - Atlanta - Tampa - Boca Raton - Latin America - Odessa - Corpus Christi



Nicholas Straccione  
Project Manager

# Certificate of Analysis Summary 452203

## Southern Union Gas Services- Monahans, Monahans, TX



**Project Name: Trunk "O" Myers**

**Project Id:** (RP-2695)

**Contact:** Joel Lowry

**Project Location:** Lea County, NM

**Date Received in Lab:** Fri Nov-09-12 10:00 pm

**Report Date:** 20-NOV-12

**Project Manager:** Nicholas Straccione

<i>Analysis Requested</i>	<i>Lab Id:</i>	452203-013	452203-014	452203-015	452203-016		
	<i>Field Id:</i>	SP#16 @ 2'	SP#17 @ 2'	SP#21 @ 2'	SP#22 @ 2'		
	<i>Depth:</i>						
	<i>Matrix:</i>	SOIL	SOIL	SOIL	SOIL		
	<i>Sampled:</i>	Nov-06-12 10:00	Nov-06-12 10:30	Nov-06-12 12:30	Nov-06-12 13:00		
<b>Inorganic Anions by EPA 300/300.1 SUB: TX104704215</b>	<i>Extracted:</i>	Nov-12-12 17:22	Nov-12-12 17:38	Nov-12-12 17:54	Nov-12-12 18:11		
	<i>Analyzed:</i>	Nov-12-12 17:22	Nov-12-12 17:38	Nov-12-12 17:54	Nov-12-12 18:11		
	<i>Units/RL:</i>	mg/kg RL	mg/kg RL	mg/kg RL	mg/kg RL		
Chloride		14.7 1.04	9.24 1.16	9.47 1.03	11.4 1.04		
<b>Percent Moisture</b>	<i>Extracted:</i>						
	<i>Analyzed:</i>	Nov-12-12 15:40	Nov-12-12 15:40	Nov-12-12 15:40	Nov-16-12 13:00		
	<i>Units/RL:</i>	% RL	% RL	% RL	% RL		
Percent Moisture		4.33 1.00	7.95 1.00	5.47 1.00	3.11 1.00		
<b>TPH By SW8015 Mod</b>	<i>Extracted:</i>	Nov-15-12 08:30	Nov-15-12 08:30	Nov-15-12 08:30			
	<i>Analyzed:</i>	Nov-15-12 15:24	Nov-15-12 15:52	Nov-15-12 16:25			
	<i>Units/RL:</i>	mg/kg RL	mg/kg RL	mg/kg RL			
C6-C12 Gasoline Range Hydrocarbons		ND 15.6	ND 16.2	ND 15.8			
C12-C28 Diesel Range Hydrocarbons		ND 15.6	ND 16.2	ND 15.8			
C28-C35 Oil Range Hydrocarbons		ND 15.6	ND 16.2	ND 15.8			
Total TPH		ND 15.6	ND 16.2	ND 15.8			

This analytical report, and the entire data package it represents, has been made for your exclusive and confidential use. The interpretations and results expressed throughout this analytical report represent the best judgment of XENCO Laboratories. XENCO Laboratories assumes no responsibility and makes no warranty to the end use of the data hereby presented. Our liability is limited to the amount invoiced for this work order unless otherwise agreed to in writing.

Houston - Dallas - San Antonio - Atlanta - Tampa - Boca Raton - Latin America - Odessa - Corpus Christi



Nicholas Straccione  
Project Manager

## Flagging Criteria

- X** In our quality control review of the data a QC deficiency was observed and flagged as noted. MS/MSD recoveries were found to be outside of the laboratory control limits due to possible matrix /chemical interference, or a concentration of target analyte high enough to affect the recovery of the spike concentration. This condition could also affect the relative percent difference in the MS/MSD.
- B** A target analyte or common laboratory contaminant was identified in the method blank. Its presence indicates possible field or laboratory contamination.
- D** The sample(s) were diluted due to targets detected over the highest point of the calibration curve, or due to matrix interference. Dilution factors are included in the final results. The result is from a diluted sample.
- E** The data exceeds the upper calibration limit; therefore, the concentration is reported as estimated.
- F** RPD exceeded lab control limits.
- J** The target analyte was positively identified below the quantitation limit and above the detection limit.
- U** Analyte was not detected.
- L** The LCS data for this analytical batch was reported below the laboratory control limits for this analyte. The department supervisor and QA Director reviewed data. The samples were either reanalyzed or flagged as estimated concentrations.
- H** The LCS data for this analytical batch was reported above the laboratory control limits. Supporting QC Data were reviewed by the Department Supervisor and QA Director. Data were determined to be valid for reporting.
- K** Sample analyzed outside of recommended hold time.
- JN** A combination of the "N" and the "J" qualifier. The analysis indicates that the analyte is "tentatively identified" and the associated numerical value may not be consistent with the amount actually present in the environmental sample.

\* Surrogate recovered outside laboratory control limit.

**BRL** Below Reporting Limit.

**RL** Reporting Limit

**MDL** Method Detection Limit      **SDL** Sample Detection Limit      **LOD** Limit of Detection

**PQL** Practical Quantitation Limit      **SQL** Method Quantitation Limit      **LOQ** Limit of Quantitation

**DL** Method Detection Limit

**NC** Non-Calculable

+ NELAC certification not offered for this compound.

\* (Next to analyte name or method description) = Outside XENCO's scope of NELAC accreditation

***Recipient of the Prestigious Small Business Administration Award of Excellence in 1994.***

*Certified and approved by numerous States and Agencies.*

***A Small Business and Minority Status Company that delivers SERVICE and QUALITY***

Houston - Dallas - San Antonio - Atlanta - Midland/Odessa - Tampa/Lakeland - Phoenix - Latin America

4143 Greenbriar Dr, Stafford, TX 77477  
 9701 Harry Hines Blvd, Dallas, TX 75220  
 5332 Blackberry Drive, San Antonio TX 78238  
 2505 North Falkenburg Rd, Tampa, FL 33619  
 12600 West I-20 East, Odessa, TX 79765  
 6017 Financial Drive, Norcross, GA 30071  
 3725 E. Atlanta Ave, Phoenix, AZ 85040

Phone	Fax
(281) 240-4200	(281) 240-4280
(214) 902 0300	(214) 351-9139
(210) 509-3334	(210) 509-3335
(813) 620-2000	(813) 620-2033
(432) 563-1800	(432) 563-1713
(770) 449-8800	(770) 449-5477
(602) 437-0330	

## Form 2 - Surrogate Recoveries

Project Name: Trunk "O" Myers

Work Orders : 452203,

Project ID: (RP-2695)

Lab Batch #: 901022

Sample: 452203-001 / SMP

Batch: 1 Matrix: Soil

Units: mg/kg Date Analyzed: 11/15/12 12:13		SURROGATE RECOVERY STUDY			
TPH By SW8015 Mod		Amount Found [A]	True Amount [B]	Recovery %R [D]	Control Limits %R
Analytes					
1-Chlorooctane		88.2	100	88	70-135
o-Terphenyl		43.3	50.0	87	70-135

Lab Batch #: 901022

Sample: 452203-004 / SMP

Batch: 1 Matrix: Soil

Units: mg/kg Date Analyzed: 11/15/12 12:47		SURROGATE RECOVERY STUDY			
TPH By SW8015 Mod		Amount Found [A]	True Amount [B]	Recovery %R [D]	Control Limits %R
Analytes					
1-Chlorooctane		85.0	99.9	85	70-135
o-Terphenyl		41.7	50.0	83	70-135

Lab Batch #: 901022

Sample: 452203-008 / SMP

Batch: 1 Matrix: Soil

Units: mg/kg Date Analyzed: 11/15/12 13:16		SURROGATE RECOVERY STUDY			
TPH By SW8015 Mod		Amount Found [A]	True Amount [B]	Recovery %R [D]	Control Limits %R
Analytes					
1-Chlorooctane		87.5	100	88	70-135
o-Terphenyl		43.7	50.0	87	70-135

Lab Batch #: 901022

Sample: 452203-009 / SMP

Batch: 1 Matrix: Soil

Units: mg/kg Date Analyzed: 11/15/12 13:51		SURROGATE RECOVERY STUDY			
TPH By SW8015 Mod		Amount Found [A]	True Amount [B]	Recovery %R [D]	Control Limits %R
Analytes					
1-Chlorooctane		84.3	100	84	70-135
o-Terphenyl		41.6	50.0	83	70-135

Lab Batch #: 901022

Sample: 452203-010 / SMP

Batch: 1 Matrix: Soil

Units: mg/kg Date Analyzed: 11/15/12 14:20		SURROGATE RECOVERY STUDY			
TPH By SW8015 Mod		Amount Found [A]	True Amount [B]	Recovery %R [D]	Control Limits %R
Analytes					
1-Chlorooctane		89.7	100	90	70-135
o-Terphenyl		44.2	50.1	88	70-135

\* Surrogate outside of Laboratory QC limits

\*\* Surrogates outside limits; data and surrogates confirmed by reanalysis

\*\*\* Poor recoveries due to dilution

Surrogate Recovery [D] =  $100 * A / B$

All results are based on MDL and validated for QC purposes.

# Form 2 - Surrogate Recoveries

Project Name: Trunk "O" Myers

Work Orders : 452203,

Project ID: (RP-2695)

Lab Batch #: 901022

Sample: 452203-011 / SMP

Batch: 1 Matrix: Soil

Units: mg/kg Date Analyzed: 11/15/12 14:53		SURROGATE RECOVERY STUDY			
TPH By SW8015 Mod		Amount Found [A]	True Amount [B]	Recovery %R [D]	Control Limits %R
Analytes					
1-Chlorooctane		83.4	99.9	83	70-135
o-Terphenyl		41.3	50.0	83	70-135

Lab Batch #: 901022

Sample: 452203-013 / SMP

Batch: 1 Matrix: Soil

Units: mg/kg Date Analyzed: 11/15/12 15:24		SURROGATE RECOVERY STUDY			
TPH By SW8015 Mod		Amount Found [A]	True Amount [B]	Recovery %R [D]	Control Limits %R
Analytes					
1-Chlorooctane		86.1	99.8	86	70-135
o-Terphenyl		42.1	49.9	84	70-135

Lab Batch #: 901022

Sample: 452203-014 / SMP

Batch: 1 Matrix: Soil

Units: mg/kg Date Analyzed: 11/15/12 15:52		SURROGATE RECOVERY STUDY			
TPH By SW8015 Mod		Amount Found [A]	True Amount [B]	Recovery %R [D]	Control Limits %R
Analytes					
1-Chlorooctane		89.5	99.7	90	70-135
o-Terphenyl		44.9	49.9	90	70-135

Lab Batch #: 901022

Sample: 452203-015 / SMP

Batch: 1 Matrix: Soil

Units: mg/kg Date Analyzed: 11/15/12 16:25		SURROGATE RECOVERY STUDY			
TPH By SW8015 Mod		Amount Found [A]	True Amount [B]	Recovery %R [D]	Control Limits %R
Analytes					
1-Chlorooctane		78.0	99.8	78	70-135
o-Terphenyl		38.5	49.9	77	70-135

Lab Batch #: 901301

Sample: 452203-011 / SMP

Batch: 1 Matrix: Soil

Units: mg/kg Date Analyzed: 11/20/12 10:03		SURROGATE RECOVERY STUDY			
BTEX by EPA 8021B		Amount Found [A]	True Amount [B]	Recovery %R [D]	Control Limits %R
Analytes					
1,4-Difluorobenzene		0.0245	0.0300	82	80-120
4-Bromofluorobenzene		0.0277	0.0300	92	80-120

\* Surrogate outside of Laboratory QC limits

\*\* Surrogates outside limits; data and surrogates confirmed by reanalysis

\*\*\* Poor recoveries due to dilution

Surrogate Recovery [D] =  $100 * A / B$

All results are based on MDL and validated for QC purposes.



## Form 2 - Surrogate Recoveries

Project Name: Trunk "O" Myers

Work Orders : 452203,

Project ID: (RP-2695)

Lab Batch #: 901022

Sample: 630020-1-BLK / BLK

Batch: 1 Matrix: Solid

Units: mg/kg Date Analyzed: 11/15/12 11:44		SURROGATE RECOVERY STUDY			
TPH By SW8015 Mod		Amount Found [A]	True Amount [B]	Recovery %R [D]	Control Limits %R
Analytes					
1-Chlorooctane		91.0	99.8	91	70-135
o-Terphenyl		44.8	49.9	90	70-135

Lab Batch #: 901301

Sample: 630198-1-BLK / BLK

Batch: 1 Matrix: Solid

Units: mg/kg Date Analyzed: 11/20/12 10:36		SURROGATE RECOVERY STUDY			
BTEX by EPA 8021B		Amount Found [A]	True Amount [B]	Recovery %R [D]	Control Limits %R
Analytes					
1,4-Difluorobenzene		0.0259	0.0300	86	80-120
4-Bromofluorobenzene		0.0280	0.0300	93	80-120

Lab Batch #: 901022

Sample: 630020-1-BKS / BKS

Batch: 1 Matrix: Solid

Units: mg/kg Date Analyzed: 11/15/12 10:42		SURROGATE RECOVERY STUDY			
TPH By SW8015 Mod		Amount Found [A]	True Amount [B]	Recovery %R [D]	Control Limits %R
Analytes					
1-Chlorooctane		89.9	99.9	90	70-135
o-Terphenyl		54.5	50.0	109	70-135

Lab Batch #: 901301

Sample: 630198-1-BKS / BKS

Batch: 1 Matrix: Solid

Units: mg/kg Date Analyzed: 11/20/12 09:13		SURROGATE RECOVERY STUDY			
BTEX by EPA 8021B		Amount Found [A]	True Amount [B]	Recovery %R [D]	Control Limits %R
Analytes					
1,4-Difluorobenzene		0.0268	0.0300	89	80-120
4-Bromofluorobenzene		0.0297	0.0300	99	80-120

Lab Batch #: 901022

Sample: 630020-1-BSD / BSD

Batch: 1 Matrix: Solid

Units: mg/kg Date Analyzed: 11/15/12 11:10		SURROGATE RECOVERY STUDY			
TPH By SW8015 Mod		Amount Found [A]	True Amount [B]	Recovery %R [D]	Control Limits %R
Analytes					
1-Chlorooctane		93.0	99.8	93	70-135
o-Terphenyl		56.0	49.9	112	70-135

\* Surrogate outside of Laboratory QC limits

\*\* Surrogates outside limits; data and surrogates confirmed by reanalysis

\*\*\* Poor recoveries due to dilution

Surrogate Recovery [D] =  $100 * A / B$

All results are based on MDL and validated for QC purposes.

## Form 2 - Surrogate Recoveries

Project Name: Trunk "O" Myers

Work Orders : 452203,

Project ID: (RP-2695)

Lab Batch #: 901301

Sample: 630198-1-BSD / BSD

Batch: 1 Matrix: Solid

Units: mg/kg

Date Analyzed: 11/20/12 09:30

### SURROGATE RECOVERY STUDY

BTEX by EPA 8021B Analytes	Amount Found [A]	True Amount [B]	Recovery %R [D]	Control Limits %R	Flags
1,4-Difluorobenzene	0.0301	0.0300	100	80-120	
4-Bromofluorobenzene	0.0335	0.0300	112	80-120	

Lab Batch #: 901022

Sample: 452203-001 S / MS

Batch: 1 Matrix: Soil

Units: mg/kg

Date Analyzed: 11/15/12 17:23

### SURROGATE RECOVERY STUDY

TPH By SW8015 Mod Analytes	Amount Found [A]	True Amount [B]	Recovery %R [D]	Control Limits %R	Flags
1-Chlorooctane	92.3	99.7	93	70-135	
o-Terphenyl	54.3	49.9	109	70-135	

Lab Batch #: 901301

Sample: 452203-011 S / MS

Batch: 1 Matrix: Soil

Units: mg/kg

Date Analyzed: 11/20/12 10:20

### SURROGATE RECOVERY STUDY

BTEX by EPA 8021B Analytes	Amount Found [A]	True Amount [B]	Recovery %R [D]	Control Limits %R	Flags
1,4-Difluorobenzene	0.0295	0.0300	98	80-120	
4-Bromofluorobenzene	0.0269	0.0300	90	80-120	

Lab Batch #: 901022

Sample: 452203-001 SD / MSD

Batch: 1 Matrix: Soil

Units: mg/kg

Date Analyzed: 11/15/12 17:53

### SURROGATE RECOVERY STUDY

TPH By SW8015 Mod Analytes	Amount Found [A]	True Amount [B]	Recovery %R [D]	Control Limits %R	Flags
1-Chlorooctane	91.4	99.9	91	70-135	
o-Terphenyl	54.2	50.0	108	70-135	

Lab Batch #: 901301

Sample: 452203-011 SD / MSD

Batch: 1 Matrix: Soil

Units: mg/kg

Date Analyzed: 11/20/12 11:26

### SURROGATE RECOVERY STUDY

BTEX by EPA 8021B Analytes	Amount Found [A]	True Amount [B]	Recovery %R [D]	Control Limits %R	Flags
1,4-Difluorobenzene	0.0343	0.0300	114	80-120	
4-Bromofluorobenzene	0.0308	0.0300	103	80-120	

\* Surrogate outside of Laboratory QC limits

\*\* Surrogates outside limits; data and surrogates confirmed by reanalysis

\*\*\* Poor recoveries due to dilution

Surrogate Recovery [D] =  $100 * A / B$

All results are based on MDL and validated for QC purposes.

**Project Name: Trunk "O" Myers**

**Work Order #: 452203**

**Analyst: KEB**

**Date Prepared: 11/20/2012**

**Project ID: (RP-2695)**

**Date Analyzed: 11/20/2012**

**Lab Batch ID: 901301**

**Sample: 630198-1-BKS**

**Batch #: 1**

**Matrix: Solid**

**Units: mg/kg**

## BLANK /BLANK SPIKE / BLANK SPIKE DUPLICATE RECOVERY STUDY

<b>BTEX by EPA 8021B</b>	<b>Blank Sample Result [A]</b>	<b>Spike Added [B]</b>	<b>Blank Spike Result [C]</b>	<b>Blank Spike %R [D]</b>	<b>Spike Added [E]</b>	<b>Blank Spike Duplicate Result [F]</b>	<b>Blk. Spk Dup. %R [G]</b>	<b>RPD %</b>	<b>Control Limits %R</b>	<b>Control Limits %RPD</b>	<b>Flag</b>
<b>Analytes</b>											
Benzene	<0.00100	0.100	0.0861	86	0.100	0.101	101	16	70-130	35	
Toluene	<0.00200	0.100	0.0891	89	0.100	0.102	102	14	70-130	35	
Ethylbenzene	<0.00100	0.100	0.0822	82	0.100	0.0990	99	19	71-129	35	
m_p-Xylenes	<0.00200	0.200	0.175	88	0.200	0.210	105	18	70-135	35	
o-Xylene	<0.00100	0.100	0.0849	85	0.100	0.104	104	20	71-133	35	

**Analyst: TTE**

**Date Prepared: 11/12/2012**

**Date Analyzed: 11/12/2012**

**Lab Batch ID: 900714**

**Sample: 629851-1-BKS**

**Batch #: 1**

**Matrix: Solid**

**Units: mg/kg**

## BLANK /BLANK SPIKE / BLANK SPIKE DUPLICATE RECOVERY STUDY

<b>Inorganic Anions by EPA 300/300.1</b>	<b>Blank Sample Result [A]</b>	<b>Spike Added [B]</b>	<b>Blank Spike Result [C]</b>	<b>Blank Spike %R [D]</b>	<b>Spike Added [E]</b>	<b>Blank Spike Duplicate Result [F]</b>	<b>Blk. Spk Dup. %R [G]</b>	<b>RPD %</b>	<b>Control Limits %R</b>	<b>Control Limits %RPD</b>	<b>Flag</b>
<b>Analytes</b>											
Chloride	<1.00	100	98.9	99	100	101	101	2	80-120	20	

Relative Percent Difference RPD =  $200 * |(C-F)/(C+F)|$

Blank Spike Recovery [D] =  $100 * (C)/[B]$

Blank Spike Duplicate Recovery [G] =  $100 * (F)/[E]$

All results are based on MDL and Validated for QC Purposes

**Project Name:** Trunk "O" Myers

**Work Order #:** 452203

**Analyst:** KEB

**Date Prepared:** 11/15/2012

**Project ID:** (RP-2695)

**Date Analyzed:** 11/15/2012

**Lab Batch ID:** 901022

**Sample:** 630020-1-BKS

**Batch #:** 1

**Matrix:** Solid

**Units:** mg/kg

## BLANK /BLANK SPIKE / BLANK SPIKE DUPLICATE RECOVERY STUDY

TPH By SW8015 Mod	Blank Sample Result [A]	Spike Added [B]	Blank Spike Result [C]	Blank Spike %R [D]	Spike Added [E]	Blank Spike Duplicate Result [F]	Blk. Spk Dup. %R [G]	RPD %	Control Limits %R	Control Limits %RPD	Flag
Analytes											
C6-C12 Gasoline Range Hydrocarbons	<15.0	999	935	94	998	946	95	1	70-135	35	
C12-C28 Diesel Range Hydrocarbons	<15.0	999	908	91	998	940	94	3	70-135	35	

Relative Percent Difference RPD =  $200 * |(C-F)/(C+F)|$

Blank Spike Recovery [D] =  $100 * (C)/[B]$

Blank Spike Duplicate Recovery [G] =  $100 * (F)/[E]$

All results are based on MDL and Validated for QC Purposes



## Form 3 - MS Recoveries



Project Name: Trunk "O" Myers

Work Order #: 452203

Lab Batch #: 900714

Date Analyzed: 11/12/2012

Date Prepared: 11/12/2012

Project ID: (RP-2695)

Analyst: TTE

QC- Sample ID: 452203-002 S

Batch #: 1

Matrix: Soil

Reporting Units: mg/kg

### MATRIX / MATRIX SPIKE RECOVERY STUDY

Inorganic Anions by EPA 300	Parent Sample Result [A]	Spike Added [B]	Spiked Sample Result [C]	%R [D]	Control Limits %R	Flag
Analytes						
Chloride	66.2	115	172	92	80-120	

Lab Batch #: 900714

Date Analyzed: 11/12/2012

Date Prepared: 11/12/2012

Analyst: TTE

QC- Sample ID: 452203-012 S

Batch #: 1

Matrix: Soil

Reporting Units: mg/kg

### MATRIX / MATRIX SPIKE RECOVERY STUDY

Inorganic Anions by EPA 300	Parent Sample Result [A]	Spike Added [B]	Spiked Sample Result [C]	%R [D]	Control Limits %R	Flag
Analytes						
Chloride	11.7	113	129	104	80-120	

Matrix Spike Percent Recovery [D] =  $100 \times (C-A)/B$

Relative Percent Difference [E] =  $200 \times (C-A)/(C+B)$

All Results are based on MDL and Validated for QC Purposes

BRL - Below Reporting Limit



# Form 3 - MS / MSD Recoveries



Project Name: Trunk "O" Myers

Work Order #: 452203

Project ID: (RP-2695)

Lab Batch ID: 901301

QC- Sample ID: 452203-011 S

Batch #: 1 Matrix: Soil

Date Analyzed: 11/20/2012

Date Prepared: 11/20/2012

Analyst: KEB

Reporting Units: mg/kg

MATRIX SPIKE / MATRIX SPIKE DUPLICATE RECOVERY STUDY											
BTEX by EPA 8021B Analytes	Parent Sample Result [A]	Spike Added [B]	Spiked Sample Result [C]	Spiked Sample %R [D]	Spike Added [E]	Duplicate Spiked Sample Result [F]	Spiked Dup. %R [G]	RPD %	Control Limits %R	Control Limits %RPD	Flag
Benzene	<0.00105	0.105	0.0944	90	0.106	0.114	108	19	70-130	35	
Toluene	<0.00211	0.105	0.0988	94	0.106	0.117	110	17	70-130	35	
Ethylbenzene	<0.00105	0.105	0.0951	91	0.106	0.111	105	15	71-129	35	
m_p-Xylenes	<0.00211	0.211	0.199	94	0.212	0.231	109	15	70-135	35	
o-Xylene	<0.00105	0.105	0.0966	92	0.106	0.115	108	17	71-133	35	

Lab Batch ID: 901022

QC- Sample ID: 452203-001 S

Batch #: 1 Matrix: Soil

Date Analyzed: 11/15/2012

Date Prepared: 11/15/2012

Analyst: KEB

Reporting Units: mg/kg

MATRIX SPIKE / MATRIX SPIKE DUPLICATE RECOVERY STUDY											
TPH By SW8015 Mod Analytes	Parent Sample Result [A]	Spike Added [B]	Spiked Sample Result [C]	Spiked Sample %R [D]	Spike Added [E]	Duplicate Spiked Sample Result [F]	Spiked Dup. %R [G]	RPD %	Control Limits %R	Control Limits %RPD	Flag
C6-C12 Gasoline Range Hydrocarbons	<15.5	1030	950	92	1040	976	94	3	70-135	35	
C12-C28 Diesel Range Hydrocarbons	<15.5	1030	954	93	1040	961	92	1	70-135	35	

Matrix Spike Percent Recovery  $[D] = 100 * (C-A) / B$   
Relative Percent Difference  $RPD = 200 * |(C-F) / (C+F)|$

Matrix Spike Duplicate Percent Recovery  $[G] = 100 * (F-A) / E$

ND = Not Detected, J = Present Below Reporting Limit, B = Present in Blank, NR = Not Requested, I = Interference, NA = Not

ApplicableN = See Narrative, EQL = Estimated Quantitation Limit

**Project Name: Trunk "O" Myers**

**Work Order #:** 452203

**Lab Batch #:** 900713

**Project ID:** (RP-2695)

**Date Analyzed:** 11/12/2012 12:40

**Date Prepared:** 11/12/2012

**Analyst:** WRU

**QC- Sample ID:** 452258-001 D

**Batch #:** 1

**Matrix:** Soil

**Reporting Units:** %

## SAMPLE / SAMPLE DUPLICATE RECOVERY

Percent Moisture	Parent Sample Result [A]	Sample Duplicate Result [B]	RPD	Control Limits %RPD	Flag
Analyte					
Percent Moisture	6.83	6.82	0	20	

**Lab Batch #:** 901092

**Date Analyzed:** 11/16/2012 13:00

**Date Prepared:** 11/16/2012

**Analyst:** WRU

**QC- Sample ID:** 452203-002 D

**Batch #:** 1

**Matrix:** Soil

**Reporting Units:** %

## SAMPLE / SAMPLE DUPLICATE RECOVERY

Percent Moisture	Parent Sample Result [A]	Sample Duplicate Result [B]	RPD	Control Limits %RPD	Flag
Analyte					
Percent Moisture	6.01	6.05	1	20	

Spike Relative Difference RPD  $200 * |(B-A)/(B+A)|$

All Results are based on MDL and validated for QC purposes.

BRL - Below Reporting Limit

# Xenco Laboratories

## CHAIN OF CUSTODY RECORD AND ANALYSIS REQUEST

12600 West I-20 East  
Odessa, Texas 79765

Phone: 432-563-1800  
Fax: 432-563-1713

Project Manager: Ben J. Arguijo; Joel Lowry

Project Name: Trunk "O" Myers

Company Name: Basin Environmental Service Technologies, LLC

Project #: (RP-2695)

Company Address: P.O. Box 301

Project Loc: Lea County, NM

City/State/Zip: Lovington, NM 88260

PO #: Bill Southern Union Gas Services

Telephone No: (575)396-2378

Fax No: (575) 396-1429

Report Format: ☒ Standard ☐ TRRP ☐ NPDES

Sampler Signature: Joel Lowry

e-mail: pm@basinenv.com rose.slade@sug.com

(lab use only)  
ORDER #: 452203

ORDER #: 152205

LAB # (lab use only)	FIELD CODE	Beginning Depth	Ending Depth	Date Sampled	Time Sampled	Field Filtered	Total # of Containers	Preservation & # of Containers								Matrix												RUSH TAT (Pre-Schedule) 24, 48, 72	Standard TAT 4 DAY										
								Ice	HNO <sub>3</sub>	HCl	H <sub>2</sub> SO <sub>4</sub>	NaOH	Na <sub>2</sub> S <sub>2</sub> O <sub>3</sub>	None	Other (Specify)	DW = Drinking Water SL = Sludge	GW = Groundwater S = Soil/soil	NP = Non-Potable Specify Other	TPH: 418.1 8015M 8015B	TPH: TX 1005 TX 1006	Cations (Ca, Mg, Na, K)	Anions (Cl, SO <sub>4</sub> , Alkalinity)	SAR / ESP / CEC	Metals: As Ag Ba Cd Cr Pb Hg Se	Volatiles	Semivolatiles	BTEX 8021B/5030 or BTEX 8260			RCI	N.O.R.M.	CHLORIDES	Total Dissolved Solids						
01	SP#3 @ Surface			11/5/2012	1000		1	X								Soil	X																						X
02	SP#6 @ 2'			11/5/2012	1130		1	X								Soil																							X
03	SP#7 @ 2'			11/5/2012	1200		1	X								Soil																							X
04	SP#8 @ 2'			11/5/2012	1230		1	X								Soil	X																						X
05	SP#9 @ 2'			11/5/2012	100		1	X								Soil																							X
06	SP#10 @ 2'			11/5/2012	130		1	X								Soil																							X
07	SP#11 @ 2'			11/5/2012	200		1	X								Soil																							X
08	SP#12 @ 2'			11/5/2012	230		1	X								Soil	X																						X
09	SP#13 @ 2'			11/5/2012	300		1	X								Soil	X																						X
10	SP#14 @ 2'			11/6/2012	900		1	X								Soil	X																						X

### Special Instructions:

Run Sample with Highest TPH for BTEX

Relinquished by:	Date	Time	Received by:	Date	Time
<u>Joel Lowry</u>	<u>11/8/12</u>	<u>3:10</u>			
Relinquished by:	Date	Time	Received by:	Date	Time
Relinquished by:	Date	Time	Received by: ELOT:	Date	Time
			<u>[Signature]</u>	<u>11/8/12</u>	<u>22:00</u>

### Laboratory Comments:

Sample Containers Intact?	<u>Y</u>	<u>N</u>
VOCs Free of Headspace?	<u>Y</u>	<u>N/A</u>
Labels on container(s)	<u>Y</u>	<u>N</u>
Custody seals on container(s)	<u>Y</u>	<u>N</u>
Custody seals on cooler(s)	<u>Y</u>	<u>N</u>
Sample Hand Delivered	<u>Y</u>	<u>N</u>
by Sample Client Rep.?	<u>Y</u>	<u>N</u>
by Courier?	<u>Y</u>	<u>N</u>
UPS	<u>Y</u>	<u>N</u>
DHL	<u>Y</u>	<u>N</u>
FedEx	<u>Y</u>	<u>N</u>
Lone Star	<u>Y</u>	<u>N</u>
Temperature Upon Receipt:	<u>4.5</u>	<u>°C</u>



# Xenco Laboratories

### CHAIN OF CUSTODY RECORD AND ANALYSIS REQUEST

**12600 West I-20 East  
Odessa, Texas 79765**

**Phone: 432-563-1800**  
**Fax: 432-563-1713**

**Project Manager:** Ben J. Arguijo; Joel Lowry

**Project Name: Trunk "O" Myers**

**Company Name**      **Basin Environmental Service Technologies, LLC**

**Project #: (RP-2695)**

**Company Address: P.O. Box 301**

**Project Loc: Lea County, NM**

City/State/Zip: Lovington, NM 88260

**PO #: Bill Southern Union Gas Services**

Telephone No: (575)396-2378

Fax No: (575) 396-1429

**Report Format:** ☒ Standard ☐ TRRP ☐ NPDES

**Sampler Signature:**

e-mail: [pm@basinenv.com](mailto:pm@basinenv.com) [rose.slade@sug.com](mailto:rose.slade@sug.com)

[illegible]**Special Instructions:**

**Run Sample with Highest TPH for BTEX**

Laboratory Comments:

Sample Containers Intact?	Y	N
VOCs Free of Headspace?	Y	N
Labels on container(s)	Y	N
Custody seals on container(s)	Y	N
Custody seals on cooler(s)	Y	N
Sample Hand Delivered	Y	N
by Sampler/Client Rep. ?	Y	N
by Courier?	UPS	DHL
	FedEx	Lone Star
Temperature Upon Receipt:	°C	

Relinquished by:

Date \_\_\_\_\_

Time

Received by:

Date \_\_\_\_\_

Time

Relinquished by:

Date \_\_\_\_\_

Time

Received by:

Date \_\_\_\_\_

Time

Relinquished by:

Date \_\_\_\_\_

Time

Received by ELOT:

Date \_\_\_\_\_

Time



## Prelogin/Nonconformance Report- Sample Log-In

**Client:** PLAINS ALL AMERICAN EH&S

**Date/ Time Received:** 11/09/2012 10:00:00 PM

**Work Order #:** 452203

**Acceptable Temperature Range:** 0 - 6 degC

**Air and Metal samples Acceptable Range:** Ambient

**Temperature Measuring device used :**

Sample Receipt Checklist	Comments
#1 *Temperature of cooler(s)?	9.7
#2 *Shipping container in good condition?	Yes
#3 *Samples received on ice?	Yes
#4 *Custody Seals intact on shipping container/ cooler?	Yes
#5 Custody Seals intact on sample bottles?	Yes
#6 *Custody Seals Signed and dated?	Yes
#7 *Chain of Custody present?	Yes
#8 Sample instructions complete on Chain of Custody?	Yes
#9 Any missing/extra samples?	No
#10 Chain of Custody signed when relinquished/ received?	Yes
#11 Chain of Custody agrees with sample label(s)?	Yes
#12 Container label(s) legible and intact?	Yes
#13 Sample matrix/ properties agree with Chain of Custody?	Yes
#14 Samples in proper container/ bottle?	Yes
#15 Samples properly preserved?	Yes
#16 Sample container(s) intact?	Yes
#17 Sufficient sample amount for indicated test(s)?	Yes
#18 All samples received within hold time?	Yes
#19 Subcontract of sample(s)?	Yes
#20 VOC samples have zero headspace (less than 1/4 inch bubble)?	Yes
#21 <2 for all samples preserved with HNO3,HCL, H2SO4?	Yes
#22 >10 for all samples preserved with NaAsO2+NaOH, ZnAc+NaOH?	Yes

**\* Must be completed for after-hours delivery of samples prior to placing in the refrigerator**

Analyst:	PH Device/Lot#:
----------	-----------------

\_\_\_\_\_  
**Checklist completed by:**

Date: \_\_\_\_\_

\_\_\_\_\_  
**Checklist reviewed by:**

Date: \_\_\_\_\_



# SUNDANCE SERVICES, Inc.

P.O. Box 1737 Eunice, New Mexico 88231  
(575) 394-2511

TICKET No. **225838**

LEASE OPERATOR/SHIPPER/COMPANY: **SUG**

LEASE NAME: **TRUNK O' WYERS**

TRANSPORTER COMPANY: **BASIN ENVIR.**

TIME **2:03** AM/PM

DATE: **11/7/12** VEHICLE NO: **8**

GENERATOR COMPANY  
MAN'S NAME: **CURTIS STANLEY**

CHARGE TO: **SUG**

RIG NAME  
AND NUMBER

## TYPE OF MATERIAL

- |   |   |                                   |
|---|---|-----------------------------------|
| <input type="checkbox"/> Production Water | <input type="checkbox"/> Drilling Fluids              | <input type="checkbox"/> Rinsate  |
| <input type="checkbox"/> Tank Bottoms     | <input checked="" type="checkbox"/> Contaminated Soil | <input type="checkbox"/> Jet Out  |
| <input type="checkbox"/> Solids           | <input type="checkbox"/> BS&W Content:                | <input type="checkbox"/> Call Out |

Description: **O/D**

RRC or API #

C-133#

VOLUME OF MATERIAL ☐ BBLs. : ☐ YARD **12** : ☐

AS A CONDITION TO SUNDANCE SERVICES, INC.'S ACCEPTANCE OF THE MATERIALS SHIPPED WITH THIS JOB TICKET, OPERATOR/SHIPPER REPRESENTS AND WARRANTS THAT THE WASTE MATERIAL SHIPPED HERewith IS MATERIAL EXEMPT FROM THE RESOURCE, CONSERVATION AND RECOVERY ACT OF 1976, AS AMENDED FROM TIME TO TIME, 40 U.S.C. § 6901, et seq., THE NM HEALTH AND SAF. CODE § 361.001 et seq., AND REGULATIONS RELATED THERETO, BY VIRTUE OF THE EXEMPTION AFFORDED DRILLING FLUIDS, PRODUCED WATERS, AND OTHER WASTE ASSOCIATED WITH THE EXPLORATION, DEVELOPMENT OR PRODUCTION OF CRUDE OIL OR NATURAL GAS OR GEOTHERMAL ENERGY.

ALSO AS A CONDITION TO SUNDANCE SERVICES, INC.'S ACCEPTANCE OF THE MATERIALS SHIPPED WITH THIS JOB TICKET. TRANSPORTER REPRESENTS AND WARRANTS THAT ONLY THE MATERIAL DELIVERED BY OPERATOR/SHIPPER TO TRANSPORTER IS NOW DELIVERED BY TRANSPORTER TO SUNDANCE SERVICES, INC.'S FACILITY FOR DISPOSAL.

**THIS WILL CERTIFY** that the above Transporter loaded the material represented by this Transporter Statement at the above described location, and that it was tendered by the above described shipper. This will certify that no additional materials were added to this load, and that the material was delivered without incident.

DRIVER: **[Signature]**

(SIGNATURE)

FACILITY REPRESENTATIVE: **[Signature]**

(SIGNATURE)

White - Sundance

Canary - Sundance Acct #1

Pink - Transporter

Re-order from: TOTALLY SHARP ADVERTISING • 432-586-5401 • www.PromoSupermarket.com





# SUNDANCE SERVICES, Inc.

P.O. Box 1737 Eunice, New Mexico 88231  
(575) 394-2511

TICKET No. **225817**

LEASE OPERATOR/SHIPPER/COMPANY: **SUG**

LEASE NAME: **TRUNK O MYERS**

TRANSPORTER COMPANY: **BASIN ENVIR.**

DATE: **11/7/12** VEHICLE NO: **8**

GENERATOR COMPANY  
MAN'S NAME:

TIME **12:44** AM/PM

**CURTIS STANLEY**

CHARGE TO: **SUG**

RIG NAME  
AND NUMBER

## TYPE OF MATERIAL

- |   |   |                                   |
|---|---|-----------------------------------|
| <input type="checkbox"/> Production Water | <input type="checkbox"/> Drilling Fluids              | <input type="checkbox"/> Rinsate  |
| <input type="checkbox"/> Tank Bottoms     | <input checked="" type="checkbox"/> Contaminated Soil | <input type="checkbox"/> Jet Out  |
| <input type="checkbox"/> Solids           | <input type="checkbox"/> BS&W Content:                | <input type="checkbox"/> Call Out |

Description: **oil**

RRC or API #

C-133#

VOLUME OF MATERIAL ☐ BBLs. : ☐ YARD **12** : ☐

AS A CONDITION TO SUNDANCE SERVICES, INC.'S ACCEPTANCE OF THE MATERIALS SHIPPED WITH THIS JOB TICKET, OPERATOR/SHIPPER REPRESENTS AND WARRANTS THAT THE WASTE MATERIAL SHIPPED HERewith IS MATERIAL EXEMPT FROM THE RESOURCE, CONSERVATION AND RECOVERY ACT OF 1976, AS AMENDED FROM TIME TO TIME, 40 U.S.C. § 6901, et seq., THE NM HEALTH AND SAF. CODE § 361.001 et seq., AND REGULATIONS RELATED THERETO, BY VIRTUE OF THE EXEMPTION AFFORDED DRILLING FLUIDS, PRODUCED WATERS, AND OTHER WASTE ASSOCIATED WITH THE EXPLORATION, DEVELOPMENT OR PRODUCTION OF CRUDE OIL OR NATURAL GAS OR GEOTHERMAL ENERGY.

ALSO AS A CONDITION TO SUNDANCE SERVICES, INC.'S ACCEPTANCE OF THE MATERIALS SHIPPED WITH THIS JOB TICKET. TRANSPORTER REPRESENTS AND WARRANTS THAT ONLY THE MATERIAL DELIVERED BY OPERATOR/SHIPPER TO TRANSPORTER IS NOW DELIVERED BY TRANSPORTER TO SUNDANCE SERVICES, INC.'S FACILITY FOR DISPOSAL.

**THIS WILL CERTIFY** that the above Transporter loaded the material represented by this Transporter Statement at the above described location, and that it was tendered by the above described shipper. This will certify that no additional materials were added to this load, and that the material was delivered without incident.

DRIVER:

(SIGNATURE)

FACILITY REPRESENTATIVE:

(SIGNATURE)

White - Sundance

Canary - Sundance Acct #1

Pink - Transporter

Re-order from: TOTALLY SHARP ADVERTISING • 432-586-5401 • [www.PromoSupermarket.com](http://www.PromoSupermarket.com)





# SUNDANCE SERVICES, Inc.

P.O. Box 1737 Eunice, New Mexico 88231  
(575) 394-2511

TICKET No. 225802

LEASE OPERATOR/SHIPPER/COMPANY: SUG

LEASE NAME: TRUCK 0 MYERS

TRANSPORTER COMPANY: BASIN ENVIRONMENTAL

TIME 11:27 AM/PM

DATE: 11/7/12 VEHICLE NO: 12

GENERATOR COMPANY  
MAN'S NAME: CURTIS STANLEY

CHARGE TO: SUG

RIG NAME  
AND NUMBER

## TYPE OF MATERIAL

- |   |   |                                   |
|---|---|-----------------------------------|
| <input type="checkbox"/> Production Water | <input type="checkbox"/> Drilling Fluids              | <input type="checkbox"/> Rinsate  |
| <input type="checkbox"/> Tank Bottoms     | <input checked="" type="checkbox"/> Contaminated Soil | <input type="checkbox"/> Jet Out  |
| <input type="checkbox"/> Solids           | <input type="checkbox"/> BS&W Content:                | <input type="checkbox"/> Call Out |

Description: 9D

RRC or API #

C-133#

VOLUME OF MATERIAL ☐ BBLs. : ☐ YARD 12 : ☐

AS A CONDITION TO SUNDANCE SERVICES, INC.'S ACCEPTANCE OF THE MATERIALS SHIPPED WITH THIS JOB TICKET, OPERATOR/SHIPPER REPRESENTS AND WARRANTS THAT THE WASTE MATERIAL SHIPPED HERewith IS MATERIAL EXEMPT FROM THE RESOURCE, CONSERVATION AND RECOVERY ACT OF 1976, AS AMENDED FROM TIME TO TIME, 40 U.S.C. § 6901, et seq., THE NM HEALTH AND SAF. CODE § 361.001 et seq., AND REGULATIONS RELATED THERETO, BY VIRTUE OF THE EXEMPTION AFFORDED DRILLING FLUIDS, PRODUCED WATERS, AND OTHER WASTE ASSOCIATED WITH THE EXPLORATION, DEVELOPMENT OR PRODUCTION OF CRUDE OIL OR NATURAL GAS OR GEOTHERMAL ENERGY.

ALSO AS A CONDITION TO SUNDANCE SERVICES, INC.'S ACCEPTANCE OF THE MATERIALS SHIPPED WITH THIS JOB TICKET. TRANSPORTER REPRESENTS AND WARRANTS THAT ONLY THE MATERIAL DELIVERED BY OPERATOR/SHIPPER TO TRANSPORTER IS NOW DELIVERED BY TRANSPORTER TO SUNDANCE SERVICES, INC.'S FACILITY FOR DISPOSAL.

**THIS WILL CERTIFY** that the above Transporter loaded the material represented by this Transporter Statement at the above described location, and that it was tendered by the above described shipper. This will certify that no additional materials were added to this load, and that the material was delivered without incident.

DRIVER: [Signature]

(SIGNATURE)

FACILITY REPRESENTATIVE: [Signature]

(SIGNATURE)

White - Sundance

Canary - Sundance Acct #1

Pink - Transporter

Re-order from: TOTALLY SHARP ADVERTISING • 432-586-5401 • www.PromoSupermarket.com





# SUNDANCE SERVICES, Inc.

P.O. Box 1737 Eunice, New Mexico 88231  
(575) 394-2511

TICKET No. 225784

LEASE OPERATOR/SHIPPER/COMPANY:

BASIN ENVIRONMENTAL

LEASE NAME:

TRUCK 'O' MYER

TRANSPORTER COMPANY:

BASIN ENVIRONMENTAL

TIME 10:10 AM/PM

DATE:

11/7/12

VEHICLE NO:

GENERATOR COMPANY  
MAN'S NAME:

CURTIS STAWLEY

CHARGE TO:

SUG

RIG NAME  
AND NUMBER

## TYPE OF MATERIAL

- |   |   |                                   |
|---|---|-----------------------------------|
| <input type="checkbox"/> Production Water | <input type="checkbox"/> Drilling Fluids              | <input type="checkbox"/> Rinsate  |
| <input type="checkbox"/> Tank Bottoms     | <input checked="" type="checkbox"/> Contaminated Soil | <input type="checkbox"/> Jet Out  |
| <input type="checkbox"/> Solids           | <input type="checkbox"/> BS&W Content:                | <input type="checkbox"/> Call Out |

Description:

OIL

RRC or API #

C-133#

VOLUME OF MATERIAL

☐ BBLs.

☐ YARD

12

AS A CONDITION TO SUNDANCE SERVICES, INC.'S ACCEPTANCE OF THE MATERIALS SHIPPED WITH THIS JOB TICKET, OPERATOR/SHIPPER REPRESENTS AND WARRANTS THAT THE WASTE MATERIAL SHIPPED HERewith IS MATERIAL EXEMPT FROM THE RESOURCE, CONSERVATION AND RECOVERY ACT OF 1976, AS AMENDED FROM TIME TO TIME, 40 U.S.C. § 6901, et seq., THE NM HEALTH AND SAF. CODE § 361.001 et seq., AND REGULATIONS RELATED THERETO, BY VIRTUE OF THE EXEMPTION AFFORDED DRILLING FLUIDS, PRODUCED WATERS, AND OTHER WASTE ASSOCIATED WITH THE EXPLORATION, DEVELOPMENT OR PRODUCTION OF CRUDE OIL OR NATURAL GAS OR GEOTHERMAL ENERGY.

ALSO AS A CONDITION TO SUNDANCE SERVICES, INC.'S ACCEPTANCE OF THE MATERIALS SHIPPED WITH THIS JOB TICKET. TRANSPORTER REPRESENTS AND WARRANTS THAT ONLY THE MATERIAL DELIVERED BY OPERATOR/SHIPPER TO TRANSPORTER IS NOW DELIVERED BY TRANSPORTER TO SUNDANCE SERVICES, INC.'S FACILITY FOR DISPOSAL.

**THIS WILL CERTIFY** that the above Transporter loaded the material represented by this Transporter Statement at the above described location, and that it was tendered by the above described shipper. This will certify that no additional materials were added to this load, and that the material was delivered without incident.

DRIVER:

(SIGNATURE)

FACILITY REPRESENTATIVE:

(SIGNATURE)

White - Sundance

Canary - Sundance Acct #1

Pink - Transporter

Re-order from: TOTALLY SHARP ADVERTISING • 432-586-5401 • www.PromoSupermarket.com





# SUNDANCE SERVICES, Inc.

P.O. Box 1737 Eunice, New Mexico 88231  
(575) 394-2511

TICKET No. **225775**

LEASE OPERATOR/SHIPPER/COMPANY: **SUG**

LEASE NAME: **TRUCK 0 MYERS**

TRANSPORTER COMPANY: **BASIN ENVIRONMENTAL**

TIME **8:55** AM/PM

DATE: **11/7/12** VEHICLE NO: **8**

GENERATOR COMPANY  
MAN'S NAME: **CURTIS**

CHARGE TO: **SUG**

RIG NAME  
AND NUMBER

## TYPE OF MATERIAL

- |   |   |                                   |
|---|---|-----------------------------------|
| <input type="checkbox"/> Production Water | <input type="checkbox"/> Drilling Fluids              | <input type="checkbox"/> Rinsate  |
| <input type="checkbox"/> Tank Bottoms     | <input checked="" type="checkbox"/> Contaminated Soil | <input type="checkbox"/> Jet Out  |
| <input type="checkbox"/> Solids           | <input checked="" type="checkbox"/> BS&W Content:     | <input type="checkbox"/> Call Out |

Description: **0/D**

RRC or API #

C-133#

VOLUME OF MATERIAL ☐ BBLs. : ☐ YARD **12** : ☐

AS A CONDITION TO SUNDANCE SERVICES, INC.'S ACCEPTANCE OF THE MATERIALS SHIPPED WITH THIS JOB TICKET, OPERATOR/SHIPPER REPRESENTS AND WARRANTS THAT THE WASTE MATERIAL SHIPPED HERewith IS MATERIAL EXEMPT FROM THE RESOURCE, CONSERVATION AND RECOVERY ACT OF 1976, AS AMENDED FROM TIME TO TIME, 40 U.S.C. § 6901, et seq., THE NM HEALTH AND SAF. CODE § 361.001 et seq., AND REGULATIONS RELATED THERETO, BY VIRTUE OF THE EXEMPTION AFFORDED DRILLING FLUIDS, PRODUCED WATERS, AND OTHER WASTE ASSOCIATED WITH THE EXPLORATION, DEVELOPMENT OR PRODUCTION OF CRUDE OIL OR NATURAL GAS OR GEOTHERMAL ENERGY.

ALSO AS A CONDITION TO SUNDANCE SERVICES, INC.'S ACCEPTANCE OF THE MATERIALS SHIPPED WITH THIS JOB TICKET. TRANSPORTER REPRESENTS AND WARRANTS THAT ONLY THE MATERIAL DELIVERED BY OPERATOR/SHIPPER TO TRANSPORTER IS NOW DELIVERED BY TRANSPORTER TO SUNDANCE SERVICES, INC.'S FACILITY FOR DISPOSAL.

**THIS WILL CERTIFY** that the above Transporter loaded the material represented by this Transporter Statement at the above described location, and that it was tendered by the above described shipper. This will certify that no additional materials were added to this load, and that the material was delivered without incident.

DRIVER: **[Signature]**

(SIGNATURE)

FACILITY REPRESENTATIVE: **[Signature]**

(SIGNATURE)

White - Sundance

Canary - Sundance Acct #1

Pink - Transporter

Re-order from: TOTALLY SHARP ADVERTISING • 432-586-5401 • [www.PromoSupermarket.com](http://www.PromoSupermarket.com)





# SUNDANCE SERVICES, Inc.

P.O. Box 1737 Eunice, New Mexico 88231  
(575) 394-2511

TICKET No. 225843

LEASE OPERATOR/SHIPPER/COMPANY: SUG

LEASE NAME: TRUCK 0 MYERS

TRANSPORTER COMPANY: BASIN ENVIR

TIME 2:09 AM/PM

DATE: 11/7/12 VEHICLE NO: 9

GENERATOR COMPANY  
MAN'S NAME: CHRIS STALEY

CHARGE TO: SUG

RIG NAME  
AND NUMBER

## TYPE OF MATERIAL

- |   |   |                                   |
|---|---|-----------------------------------|
| <input type="checkbox"/> Production Water | <input type="checkbox"/> Drilling Fluids              | <input type="checkbox"/> Rinsate  |
| <input type="checkbox"/> Tank Bottoms     | <input checked="" type="checkbox"/> Contaminated Soil | <input type="checkbox"/> Jet Out  |
| <input type="checkbox"/> Solids           | <input type="checkbox"/> BS&W Content:                | <input type="checkbox"/> Call Out |

Description: 010

RRC or API #

C-133#

VOLUME OF MATERIAL [ ] BBLs. : [ ] YARD 12 : [ ]

AS A CONDITION TO SUNDANCE SERVICES, INC.'S ACCEPTANCE OF THE MATERIALS SHIPPED WITH THIS JOB TICKET, OPERATOR/SHIPPER REPRESENTS AND WARRANTS THAT THE WASTE MATERIAL SHIPPED HERewith IS MATERIAL EXEMPT FROM THE RESOURCE, CONSERVATION AND RECOVERY ACT OF 1976, AS AMENDED FROM TIME TO TIME, 40 U.S.C. § 6901, et seq., THE NM HEALTH AND SAF. CODE § 361.001 et seq., AND REGULATIONS RELATED THERETO, BY VIRTUE OF THE EXEMPTION AFFORDED DRILLING FLUIDS, PRODUCED WATERS, AND OTHER WASTE ASSOCIATED WITH THE EXPLORATION, DEVELOPMENT OR PRODUCTION OF CRUDE OIL OR NATURAL GAS OR GEOTHERMAL ENERGY.

ALSO AS A CONDITION TO SUNDANCE SERVICES, INC.'S ACCEPTANCE OF THE MATERIALS SHIPPED WITH THIS JOB TICKET. TRANSPORTER REPRESENTS AND WARRANTS THAT ONLY THE MATERIAL DELIVERED BY OPERATOR/SHIPPER TO TRANSPORTER IS NOW DELIVERED BY TRANSPORTER TO SUNDANCE SERVICES, INC.'S FACILITY FOR DISPOSAL.

**THIS WILL CERTIFY** that the above Transporter loaded the material represented by this Transporter Statement at the above described location, and that it was tendered by the above described shipper. This will certify that no additional materials were added to this load, and that the material was delivered without incident.

DRIVER:

(SIGNATURE)

FACILITY REPRESENTATIVE:

(SIGNATURE)

White - Sundance

Canary - Sundance Acct #1

Pink - Transporter

Re-order from: TOTALLY SHARP ADVERTISING • 432-586-5401 • www.PromoSupermarket.com





# SUNDANCE SERVICES, Inc.

P.O. Box 1737 Eunice, New Mexico 88231  
(575) 394-2511

TICKET No. 225820

LEASE OPERATOR/SHIPPER/COMPANY: SUG

LEASE NAME: TRUNK O MYERS

TRANSPORTER COMPANY: BASIN ENVIR.

TIME 12:52 AM/PM

DATE: 11/7/12

VEHICLE NO: 7

GENERATOR COMPANY  
MAN'S NAME: CURTIS STALEY

CHARGE TO: SUG

RIG NAME  
AND NUMBER

## TYPE OF MATERIAL

- |   |   |                                   |
|---|---|-----------------------------------|
| <input type="checkbox"/> Production Water | <input type="checkbox"/> Drilling Fluids              | <input type="checkbox"/> Rinsate  |
| <input type="checkbox"/> Tank Bottoms     | <input checked="" type="checkbox"/> Contaminated Soil | <input type="checkbox"/> Jet Out  |
| <input type="checkbox"/> Solids           | <input type="checkbox"/> BS&W Content:                | <input type="checkbox"/> Call Out |

Description: *dp*

RRC or API #

C-133#

VOLUME OF MATERIAL

☐ BBLs.

☐ YARD

12

☐

AS A CONDITION TO SUNDANCE SERVICES, INC.'S ACCEPTANCE OF THE MATERIALS SHIPPED WITH THIS JOB TICKET, OPERATOR/SHIPPER REPRESENTS AND WARRANTS THAT THE WASTE MATERIAL SHIPPED HERewith IS MATERIAL EXEMPT FROM THE RESOURCE, CONSERVATION AND RECOVERY ACT OF 1976, AS AMENDED FROM TIME TO TIME, 40 U.S.C. § 6901, et seq., THE NM HEALTH AND SAF. CODE § 361.001 et seq., AND REGULATIONS RELATED THERETO, BY VIRTUE OF THE EXEMPTION AFFORDED DRILLING FLUIDS, PRODUCED WATERS, AND OTHER WASTE ASSOCIATED WITH THE EXPLORATION, DEVELOPMENT OR PRODUCTION OF CRUDE OIL OR NATURAL GAS OR GEOTHERMAL ENERGY.

ALSO AS A CONDITION TO SUNDANCE SERVICES, INC.'S ACCEPTANCE OF THE MATERIALS SHIPPED WITH THIS JOB TICKET. TRANSPORTER REPRESENTS AND WARRANTS THAT ONLY THE MATERIAL DELIVERED BY OPERATOR/SHIPPER TO TRANSPORTER IS NOW DELIVERED BY TRANSPORTER TO SUNDANCE SERVICES, INC.'S FACILITY FOR DISPOSAL.

**THIS WILL CERTIFY** that the above Transporter loaded the material represented by this Transporter Statement at the above described location, and that it was tendered by the above described shipper. This will certify that no additional materials were added to this load, and that the material was delivered without incident.

DRIVER:

(SIGNATURE)

FACILITY REPRESENTATIVE:

(SIGNATURE)

White - Sundance

Canary - Sundance Acct #1

Pink - Transporter

Re-order from: TOTALLY SHARP ADVERTISING • 432-586-5401 • www.PromoSupermarket.com





# SUNDANCE SERVICES, Inc.

P.O. Box 1737 Eunice, New Mexico 88231  
(575) 394-2511

TICKET No. 225803

LEASE OPERATOR/SHIPPER/COMPANY: SUG

LEASE NAME: TRUCK OMYER

TRANSPORTER COMPANY: BASIN ENVIRONMENTAL

TIME 11:34 AM/PM

DATE: 11/7/12 VEHICLE NO: 9

GENERATOR COMPANY

MAN'S NAME: CURTIS STANLEY

CHARGE TO: SUG

RIG NAME  
AND NUMBER

## TYPE OF MATERIAL

- |   |   |                                   |
|---|---|-----------------------------------|
| <input type="checkbox"/> Production Water | <input type="checkbox"/> Drilling Fluids              | <input type="checkbox"/> Rinsate  |
| <input type="checkbox"/> Tank Bottoms     | <input checked="" type="checkbox"/> Contaminated Soil | <input type="checkbox"/> Jet Out  |
| <input type="checkbox"/> Solids           | <input type="checkbox"/> BS&W Content:                | <input type="checkbox"/> Call Out |

Description: O/D

RRC or API #

C-133#

VOLUME OF MATERIAL ☐ BBLs. : ☐ YARD 12 : ☐

AS A CONDITION TO SUNDANCE SERVICES, INC.'S ACCEPTANCE OF THE MATERIALS SHIPPED WITH THIS JOB TICKET, OPERATOR/SHIPPER REPRESENTS AND WARRANTS THAT THE WASTE MATERIAL SHIPPED HERewith IS MATERIAL EXEMPT FROM THE RESOURCE, CONSERVATION AND RECOVERY ACT OF 1976, AS AMENDED FROM TIME TO TIME, 40 U.S.C. § 6901, et seq., THE NM HEALTH AND SAF. CODE § 361.001 et seq., AND REGULATIONS RELATED THERETO, BY VIRTUE OF THE EXEMPTION AFFORDED DRILLING FLUIDS, PRODUCED WATERS, AND OTHER WASTE ASSOCIATED WITH THE EXPLORATION, DEVELOPMENT OR PRODUCTION OF CRUDE OIL OR NATURAL GAS OR GEOTHERMAL ENERGY.

ALSO AS A CONDITION TO SUNDANCE SERVICES, INC.'S ACCEPTANCE OF THE MATERIALS SHIPPED WITH THIS JOB TICKET. TRANSPORTER REPRESENTS AND WARRANTS THAT ONLY THE MATERIAL DELIVERED BY OPERATOR/SHIPPER TO TRANSPORTER IS NOW DELIVERED BY TRANSPORTER TO SUNDANCE SERVICES, INC.'S FACILITY FOR DISPOSAL.

**THIS WILL CERTIFY** that the above Transporter loaded the material represented by this Transporter Statement at the above described location, and that it was tendered by the above described shipper. This will certify that no additional materials were added to this load, and that the material was delivered without incident.

DRIVER:

(SIGNATURE)

FACILITY REPRESENTATIVE:

(SIGNATURE)

White - Sundance

Canary - Sundance Acct #1

Pink - Transporter

Re-order from: TOTALLY SHARP ADVERTISING • 432-586-5401 • www.PromoSupermarket.com





# SUNDANCE SERVICES, Inc.

P.O. Box 1737 Eunice, New Mexico 88231  
(575) 394-2511

TICKET No. 225785

LEASE OPERATOR/SHIPPER/COMPANY:

SUG

LEASE NAME:

TRUCK "O" MYER

TRANSPORTER COMPANY:

BASIN ENVIRONMENTAL

TIME 10:11 AM/PM

DATE:

11/7/12

VEHICLE NO:

9

GENERATOR COMPANY  
MAN'S NAME:

CURTIS STANLEY

CHARGE TO:

SUG

RIG NAME  
AND NUMBER

## TYPE OF MATERIAL

☐ Production Water

☐ Drilling Fluids

☐ Rinsate

☐ Tank Bottoms

☒ Contaminated Soil

☐ Jet Out

☐ Solids

☐ BS&W Content:

☐ Call Out

Description:

0/0

RRC or API #

C-133#

VOLUME OF MATERIAL

☐ BBLs.

☐ YARD

12

AS A CONDITION TO SUNDANCE SERVICES, INC.'S ACCEPTANCE OF THE MATERIALS SHIPPED WITH THIS JOB TICKET, OPERATOR/SHIPPER REPRESENTS AND WARRANTS THAT THE WASTE MATERIAL SHIPPED HERewith IS MATERIAL EXEMPT FROM THE RESOURCE, CONSERVATION AND RECOVERY ACT OF 1976, AS AMENDED FROM TIME TO TIME, 40 U.S.C. § 6901, et seq., THE NM HEALTH AND SAF. CODE § 361.001 et seq., AND REGULATIONS RELATED THERETO, BY VIRTUE OF THE EXEMPTION AFFORDED DRILLING FLUIDS, PRODUCED WATERS, AND OTHER WASTE ASSOCIATED WITH THE EXPLORATION, DEVELOPMENT OR PRODUCTION OF CRUDE OIL OR NATURAL GAS OR GEOTHERMAL ENERGY.

ALSO AS A CONDITION TO SUNDANCE SERVICES, INC.'S ACCEPTANCE OF THE MATERIALS SHIPPED WITH THIS JOB TICKET. TRANSPORTER REPRESENTS AND WARRANTS THAT ONLY THE MATERIAL DELIVERED BY OPERATOR/SHIPPER TO TRANSPORTER IS NOW DELIVERED BY TRANSPORTER TO SUNDANCE SERVICES, INC.'S FACILITY FOR DISPOSAL.

**THIS WILL CERTIFY** that the above Transporter loaded the material represented by this Transporter Statement at the above described location, and that it was tendered by the above described shipper. This will certify that no additional materials were added to this load, and that the material was delivered without incident.

DRIVER:

(SIGNATURE)

FACILITY REPRESENTATIVE:

(SIGNATURE)

White - Sundance

Canary - Sundance Acct #1

Pink - Transporter

Re-order from: TOTALLY SHARP ADVERTISING • 432-586-5401 • www.PromoSupermarket.com





# SUNDANCE SERVICES, Inc.

P.O. Box 1737 Eunice, New Mexico 88231  
(575) 394-2511

TICKET No. **225776**

LEASE OPERATOR/SHIPPER/COMPANY: **SUG**

LEASE NAME: **TRUCK 'O' MVERS**

TRANSPORTER COMPANY: **BASIN ENVIRONMENTAL**

TIME **8:58** AM/PM

DATE: **11/7/12**

VEHICLE NO: **9**

GENERATOR COMPANY  
MAN'S NAME: **CURTIS STANLEY**

CHARGE TO: **SUG**

RIG NAME  
AND NUMBER

## TYPE OF MATERIAL

- |   |   |                                   |
|---|---|-----------------------------------|
| <input type="checkbox"/> Production Water | <input type="checkbox"/> Drilling Fluids              | <input type="checkbox"/> Rinsate  |
| <input type="checkbox"/> Tank Bottoms     | <input checked="" type="checkbox"/> Contaminated Soil | <input type="checkbox"/> Jet Out  |
| <input type="checkbox"/> Solids           | <input type="checkbox"/> BS&W Content:                | <input type="checkbox"/> Call Out |

Description: **0/D**

RRC or API #

C-133#

VOLUME OF MATERIAL

☐ BBLs.

☐ YARD

**12**

☐

AS A CONDITION TO SUNDANCE SERVICES, INC.'S ACCEPTANCE OF THE MATERIALS SHIPPED WITH THIS JOB TICKET, OPERATOR/SHIPPER REPRESENTS AND WARRANTS THAT THE WASTE MATERIAL SHIPPED HERewith IS MATERIAL EXEMPT FROM THE RESOURCE, CONSERVATION AND RECOVERY ACT OF 1976, AS AMENDED FROM TIME TO TIME, 40 U.S.C. § 6901, et seq., THE NM HEALTH AND SAF. CODE § 361.001 et seq., AND REGULATIONS RELATED THERETO, BY VIRTUE OF THE EXEMPTION AFFORDED DRILLING FLUIDS, PRODUCED WATERS, AND OTHER WASTE ASSOCIATED WITH THE EXPLORATION, DEVELOPMENT OR PRODUCTION OF CRUDE OIL OR NATURAL GAS OR GEOTHERMAL ENERGY.

ALSO AS A CONDITION TO SUNDANCE SERVICES, INC.'S ACCEPTANCE OF THE MATERIALS SHIPPED WITH THIS JOB TICKET. TRANSPORTER REPRESENTS AND WARRANTS THAT ONLY THE MATERIAL DELIVERED BY OPERATOR/SHIPPER TO TRANSPORTER IS NOW DELIVERED BY TRANSPORTER TO SUNDANCE SERVICES, INC.'S FACILITY FOR DISPOSAL.

**THIS WILL CERTIFY** that the above Transporter loaded the material represented by this Transporter Statement at the above described location, and that it was tendered by the above described shipper. This will certify that no additional materials were added to this load, and that the material was delivered without incident.

DRIVER: **[Signature]**

(SIGNATURE)

FACILITY REPRESENTATIVE: **[Signature]**

(SIGNATURE)

White - Sundance

Canary - Sundance Acct #1

Pink - Transporter

Re-order from: TOTALLY SHARP ADVERTISING • 432-586-5401 • [www.PromoSupermarket.com](http://www.PromoSupermarket.com)





# SUNDANCE SERVICES, Inc.

P.O. Box 1737 Eunice, New Mexico 88231  
(575) 394-2511

TICKET No. 225939

LEASE OPERATOR/SHIPPER/COMPANY:

LEASE NAME:

TRANSPORTER COMPANY:

DATE:

VEHICLE NO:

GENERATOR COMPANY  
MAN'S NAME:

TIME 9:50 AM/PM

CHARGE TO:

RIG NAME  
AND NUMBER

## TYPE OF MATERIAL

☐ Production Water

☐ Drilling Fluids

☐ Rinsate

☐ Tank Bottoms

☒ Contaminated Soil

☐ Jet Out

☐ Solids

☐ BS&W Content:

☐ Call Out

Description:

RRC or API #

C-133#

VOLUME OF MATERIAL

☐ BBLs.

☒ YARD

AS A CONDITION TO SUNDANCE SERVICES, INC.'S ACCEPTANCE OF THE MATERIALS SHIPPED WITH THIS JOB TICKET, OPERATOR/SHIPPER REPRESENTS AND WARRANTS THAT THE WASTE MATERIAL SHIPPED HERewith IS MATERIAL EXEMPT FROM THE RESOURCE, CONSERVATION AND RECOVERY ACT OF 1976, AS AMENDED FROM TIME TO TIME, 40 U.S.C. § 6901, et seq., THE NM HEALTH AND SAF. CODE § 361.001 et seq., AND REGULATIONS RELATED THERETO, BY VIRTUE OF THE EXEMPTION AFFORDED DRILLING FLUIDS, PRODUCED WATERS, AND OTHER WASTE ASSOCIATED WITH THE EXPLORATION, DEVELOPMENT OR PRODUCTION OF CRUDE OIL OR NATURAL GAS OR GEOTHERMAL ENERGY.

ALSO AS A CONDITION TO SUNDANCE SERVICES, INC.'S ACCEPTANCE OF THE MATERIALS SHIPPED WITH THIS JOB TICKET. TRANSPORTER REPRESENTS AND WARRANTS THAT ONLY THE MATERIAL DELIVERED BY OPERATOR/SHIPPER TO TRANSPORTER IS NOW DELIVERED BY TRANSPORTER TO SUNDANCE SERVICES, INC.'S FACILITY FOR DISPOSAL.

**THIS WILL CERTIFY** that the above Transporter loaded the material represented by this Transporter Statement at the above described location, and that it was tendered by the above described shipper. This will certify that no additional materials were added to this load, and that the material was delivered without incident.

DRIVER:

(SIGNATURE)

FACILITY REPRESENTATIVE:

(SIGNATURE)

White - Sundance

Canary - Sundance Acct #1

Pink - Transporter

Re-order from: TOTALLY SHARP ADVERTISING • 432-586-5401 • www.PromoSupermarket.com





# SUNDANCE SERVICES, Inc.

P.O. Box 1737 Eunice, New Mexico 88231  
(575) 394-2511

TICKET No. 225940

LEASE OPERATOR/SHIPPER/COMPANY:

LEASE NAME:

TRANSPORTER COMPANY:

DATE:

VEHICLE NO:

GENERATOR COMPANY  
MAN'S NAME:

TIME 9:53 AM/PM

CHARGE TO:

RIG NAME  
AND NUMBER

## TYPE OF MATERIAL

- |   |   |                                   |
|---|---|-----------------------------------|
| <input type="checkbox"/> Production Water | <input type="checkbox"/> Drilling Fluids              | <input type="checkbox"/> Rinsate  |
| <input type="checkbox"/> Tank Bottoms     | <input checked="" type="checkbox"/> Contaminated Soil | <input type="checkbox"/> Jet Out  |
| <input type="checkbox"/> Solids           | <input type="checkbox"/> BS&W Content:                | <input type="checkbox"/> Call Out |

Description:

RRC or API #

C-133#

VOLUME OF MATERIAL

☐ BBLs.

☒ YARD

AS A CONDITION TO SUNDANCE SERVICES, INC.'S ACCEPTANCE OF THE MATERIALS SHIPPED WITH THIS JOB TICKET, OPERATOR/SHIPPER REPRESENTS AND WARRANTS THAT THE WASTE MATERIAL SHIPPED HERewith IS MATERIAL EXEMPT FROM THE RESOURCE, CONSERVATION AND RECOVERY ACT OF 1976, AS AMENDED FROM TIME TO TIME, 40 U.S.C. § 6901, et seq., THE NM HEALTH AND SAF. CODE § 361.001 et seq., AND REGULATIONS RELATED THERETO, BY VIRTUE OF THE EXEMPTION AFFORDED DRILLING FLUIDS, PRODUCED WATERS, AND OTHER WASTE ASSOCIATED WITH THE EXPLORATION, DEVELOPMENT OR PRODUCTION OF CRUDE OIL OR NATURAL GAS OR GEOTHERMAL ENERGY.

ALSO AS A CONDITION TO SUNDANCE SERVICES, INC.'S ACCEPTANCE OF THE MATERIALS SHIPPED WITH THIS JOB TICKET. TRANSPORTER REPRESENTS AND WARRANTS THAT ONLY THE MATERIAL DELIVERED BY OPERATOR/SHIPPER TO TRANSPORTER IS NOW DELIVERED BY TRANSPORTER TO SUNDANCE SERVICES, INC.'S FACILITY FOR DISPOSAL.

**THIS WILL CERTIFY** that the above Transporter loaded the material represented by this Transporter Statement at the above described location, and that it was tendered by the above described shipper. This will certify that no additional materials were added to this load, and that the material was delivered without incident.

DRIVER:

(SIGNATURE)

FACILITY REPRESENTATIVE:

(SIGNATURE)

White - Sundance

Canary - Sundance Acct #1

Pink - Transporter

Re-order from: TOTALLY SHARP ADVERTISING • 432-586-5401 • www.PromoSupermarket.com



District I  
1625 N. French Dr., Hobbs, NM 88240  
District II  
1301 W. Grand Avenue, Artesia, NM 88210  
District III  
10 Brazos Road, Aztec, NM 87410  
District IV  
20 S. St. Francis Dr., Santa Fe, NM 87505

State of New Mexico  
Energy Minerals and Natural Resources  
Oil Conservation Division  
1220 South St. Francis Dr.  
Santa Fe, NM 87505

**RECEIVED** Form C-141  
Revised October 10, 2003  
MAR 23 Submit 2 Copies to appropriate  
District Office in accordance  
with Rule 116 on back  
side of form  
**HOBBSON**

**Release Notification and Corrective Action**

**OPERATOR**

☒ Initial Report ☐ Final Report

Name of Company: Southern Union Gas Services	Contact: Rose Slade
Address: 801 S. Loop 464 Monahans, TX. 79756	Telephone No. 817-302-9716
Facility Name: Trunk "O" line	Facility Type: Gathering Pipeline
Surface Owner: Kelly Myers	Mineral Owner: .. Lease No.:

**LOCATION OF RELEASE**

Unit Letter	Section	Township	Range	Feet from the	North/South Line	Feet from the	East/West Line	County
C	35	23S	36E					Lea County

Latitude: N 36 16.005 Longitude: W 103 14.375

**NATURE OF RELEASE**

Type of Release: 8 bbls. Produced water & 2 bbls. Crude oil	Volume of Release: 10 barrels & 900 Mcf of natural gas	Volume Recovered: 0
Source of Release: Release on 30" pipeline	Date and Hour of Occurrence: 3/19/2011 (time unknown)	Date and Hour of Discovery: 3/19/2011 At 9:00AM
Was Immediate Notice Given? <input type="checkbox"/> Yes <input checked="" type="checkbox"/> No <input type="checkbox"/> Not Required	If YES, To Whom?	
By Whom?	Date and Hour:	
a Watercourse Reached? <input type="checkbox"/> Yes <input checked="" type="checkbox"/> No	If YES, Volume Impacting the Watercourse.	

If a Watercourse was Impacted, Describe Fully.\*

Describe Cause of Problem and Remedial Action Taken.\*

A natural gas pipeline developed a leak while operating at less than 35 PSI. The leak was excavated and the affected area was temporarily repaired and will be replaced at a later date.

Describe Area Affected and Cleanup Action Taken.\*

The area affected is approximately 300'x150' a lot of the release became airborne with the strong winds blowing. The release will be remediated according to NMOCD regulatory guidelines.

I hereby certify that the information given above is true and complete to the best of my knowledge and understand that pursuant to NMOCD rules and regulations all operators are required to report and/or file certain release notifications and perform corrective actions for releases which may endanger public health or the environment. The acceptance of a C-141 report by the NMOCD marked as "Final Report" does not relieve the operator of liability should their operations have failed to adequately investigate and remediate contamination that pose a threat to ground water, surface water, human health or the environment. In addition, NMOCD acceptance of a C-141 report does not relieve the operator of responsibility for compliance with any other federal, state, or local laws and/or regulations.

Signature: <u>Rosa L. Slade</u>	<b>OIL CONSERVATION DIVISION</b>	
Printed Name: Rosa L. Slade	Approved by <u>ENV. ENGINEER: [Signature]</u> District Supervisor:	
As: EHS Compliance Specialist	Approval Date: <u>03/23/2011</u>	Expiration Date: <u>05/23/2011</u>
E-mail Address: <u>rose.slade@sug.com</u>	Conditions of Approval: <u>SUBMIT FINAL C-141 BY 05/23/2011.</u>	Attached <input type="checkbox"/> <u>IRP-03-11-2695</u>
Date: _____	Phone: 432-940-5147	

\* Attach Additional Sheets If Necessary

District I  
1625 N. French Dr., Hobbs, NM 88240  
District II  
1301 W. Grand Avenue, Artesia, NM 88210  
District III  
1000 Rio Brazos Road, Aztec, NM 87410  
District IV  
1220 S. St. Francis Dr., Santa Fe, NM 87505

State of New Mexico  
Energy Minerals and Natural Resources

Oil Conservation Division  
1220 South St. Francis Dr.  
Santa Fe, NM 87505

Form C-141  
Revised October 10, 2003

Submit 2 Copies to appropriate  
District Office in accordance  
with Rule 116 on back  
side of form

## Release Notification and Corrective Action

### OPERATOR

Initial Report ☐ Final Report ☒

Name of Company	Southern Union Gas Services, Ltd.	Contact	Crystal Callaway
Address	801 S. Loop 464, Monahans, TX, 79756	Telephone No.	817-302-9407
Facility Name: Trunk "O" (Meyers) (RP-2695)		Facility Type	Gathering Pipeline

Surface Owner	Kelly Meyers	Mineral Owner:		Lease No.	
---------------	--------------	----------------	--	-----------	--

### LOCATION OF RELEASE

Unit Letter	Section	Township	Range	Feet from the	North/South Line	Feet from the	East/West Line	County
C	35	23S	36E					Lea

Latitude N32 16.005

Longitude W103 14.375

### NATURE OF RELEASE

Type of Release: 8 bbls, Produced water & 2 bbls, Crude oil	Volume of Release 10 barrels & and 900 MCF Nat. Gas	Volume Recovered 0
Source of Release: Release on 30" pipeline	Date and Hour of Occurrence 3/19/2011 (time unknown)	Date and Hour of Discovery 3/19/2011 Time:9:00AM
Was Immediate Notice Given? <input type="checkbox"/> Yes <input checked="" type="checkbox"/> No <input type="checkbox"/> Not Required	If YES, To Whom?	
By Whom?	Date and Hour:	
Was a Watercourse Reached? <input type="checkbox"/> Yes <input checked="" type="checkbox"/> No	If YES, Volume Impacting the Watercourse.	

If a Watercourse was Impacted, Describe Fully.\*

Describe Cause of Problem and Remedial Action Taken:

A natural gas pipeline developed a leak while operating at less than 35 PSI. The leak was excavated and the affected area was temporarily repaired and will be replaced at a later date.

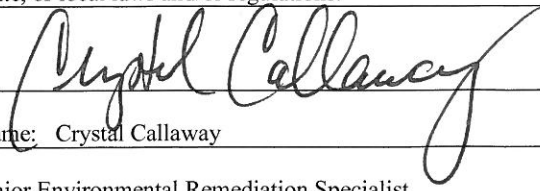
Describe Area Affected and Cleanup Action Taken.

The area affected is approximately 300' x 150' a lot of the release became airborne with the strong winds blowing. The release will be remediation according to NMOCD regulatory guidelines.

On November 5, 2012, affected soil was excavated and approximately 144 cubic yards of impacted soil was transported to Sundance Services, Inc. (NMOCD Permit #01-0003). Based on the analytical results of excavation confirmation sampling and with NMOCD approval, the excavation was backfilled.

**Please reference the attached Basin Environmental Services Technologies Remediation Summary and Site Closure Request for details of remedial activities and the site investigation.**

I hereby certify that the information given above is true and complete to the best of my knowledge and understand that pursuant to NMOCD rules and regulations all operators are required to report and/or file certain release notifications and perform corrective actions for releases, which may endanger public health or the environment. The acceptance of a C-141 report by the NMOCD marked as "Final Report" does not relieve the operator of liability should their operations have failed to adequately investigate and remediate contamination that pose a threat to ground water, surface water, human health or the environment. In addition, NMOCD acceptance of a C-141 report does not relieve the operator of responsibility for compliance with any other federal, state, or local laws and/or regulations.

Signature: 		<u>OIL CONSERVATION DIVISION</u>	
Printed Name: Crystal Callaway		Approved by District Supervisor:	
Title: Senior Environmental Remediation Specialist		Approval Date:	Expiration Date:
E-mail Address: Crystal.Callaway@Regencygas.com		Conditions of Approval:	
Date: 11/17/2014		Phone: 817/302-9407	