

RECEIVED

By JKeyes at 1:52 pm, Dec 31, 2015

Closure Report**APPROVED**

By JKeyes at 1:52 pm, Dec 31, 2015

Site Description

Site Name:	NHU Satellite #27
Company:	Oxy Permian Ltd.
Legal Description:	U/L M, Section 27, T18S, R38E
County:	Lea County, NM
GPS Coordinates:	N 32.71366° W 103.14345°

Release Data

Date of Release:	08/02/2015
Type of Release:	Oil and produced water
Source of Release:	Power loss caused the tank to spill over
Volume of Release:	15 bbls oil, 120 bbls produced water
Volume Recovered:	90 bbls

Remediation Specifications

Remediation Parameters:	Excavate the entire spill area to a depth of 6 inches. Backfill the site with clean soil.	
Remediation Activities:	11/30/2015 to 12/15/2015	
Plan Sent to OCD:	09/26/2015	Email from Cliff Brunson to Jamie Keyes
OCD Approval of Plan:	09/30/2015	Email from Jamie Keyes to Cliff Brunson
Plan Sent to BLM:	n/a	n/a
BLM Approval of Plan:	n/a	n/a

Supporting Documentation

Initial C-141	Signed 08/05/2015
Final C-141	Signed 12/21/2015
Site Diagram	August 2015
Groundwater Plot	50'-100'
TOPO Maps	August 2015
Lab Summary	08/13/2015-08/18/2015
Lab Analysis	08/13/2015-08/18/2015
Correspondence	Request and approval of remediation plan via email

Request for Closure

Based on the completion of the remediation plan as agreed upon, BBC International requests closure approval from NMOCD.

Cliff Brunson, President of BBC International Inc.

12/23/2015

District I
1625 N. French Dr., Hobbs, NM 88240
District II
811 S. First St., Artesia, NM 88210
District III
1000 Rio Brazos Road, Aztec, NM 87410
District IV
1220 S. St. Francis Dr., Santa Fe, NM 87505

State of New Mexico
Energy Minerals and Natural Resources

Oil Conservation Division
1220 South St. Francis Dr.
Santa Fe, NM 87505

Form C-141
Revised August 8, 2011

Submit 1 Copy to appropriate District Office in
accordance with 19.15.29 NMAC.

Release Notification and Corrective Action

OPERATOR

☒ Initial Report ☐ Final Report

Name of Company	Oxy Permian	Contact	Tony Aguilar
Address	1017 W. Stanolind Road	Telephone No.	(575) 397-8251
Facility Name	NHU Satellite #27	Facility Type	Satellite
Surface Owner	Oxy	Mineral Owner	
		API No.	30-025-07408


LOCATION OF RELEASE

Unit Letter	Section	Township	Range	Feet from the	North/South Line	Feet from the	East/West Line	County
M	27	18S	38E					Lea County, NM

Latitude N 32.71366°

Longitude W 103.14645°

NATURE OF RELEASE

Type of Release	Oil and Produced water	Volume of Release	15 bbls oil, 120 bbls produced water	Volume Recovered	90 bbls
Source of Release	Power loss caused the tank to spill over	Date and Hour of Occurrence	08/02/2015	Date and Hour of Discovery	
Was Immediate Notice Given?	<input checked="" type="checkbox"/> Yes <input type="checkbox"/> No <input type="checkbox"/> Not Required	If YES, To Whom?	Kellie Jones, NMOCD		
By Whom?	Tony Aguilar, Oxy	Date and Hour	08/02/2015		
Was a Watercourse Reached?	<input type="checkbox"/> Yes <input checked="" type="checkbox"/> No	If YES, Volume Impacting the Watercourse.			
If a Watercourse was Impacted, Describe Fully.*					
Describe Cause of Problem and Remedial Action Taken.*					
Power loss caused a tank to spill 15 bbls of oil and 120 bbls of produced water onto the ground. A vacuum truck recovered 90 bbls of fluids and the power was restored.					
Describe Area Affected and Cleanup Action Taken.*					
The area affected is approximately 750' x 25' off location, down a street, and into another location. Remediation will be completed in accordance with a remediation plan approved by NMOCD.					
I hereby certify that the information given above is true and complete to the best of my knowledge and understand that pursuant to NMOCD rules and regulations all operators are required to report and/or file certain release notifications and perform corrective actions for releases which may endanger public health or the environment. The acceptance of a C-141 report by the NMOCD marked as "Final Report" does not relieve the operator of liability should their operations have failed to adequately investigate and remediate contamination that pose a threat to ground water, surface water, human health or the environment. In addition, NMOCD acceptance of a C-141 report does not relieve the operator of responsibility for compliance with any other federal, state, or local laws and/or regulations.					
Signature: 		<u>OIL CONSERVATION DIVISION</u>			
Printed Name: Tony Aguilar		Approved by Environmental Specialist:			
Title: HES Specialist		Approval Date:		Expiration Date:	
E-mail Address: Raymond_aguilar@oxy.com		Conditions of Approval:		Attached <input type="checkbox"/>	
Date: 8-5-15		Phone: (575) 397-8251			

* Attach Additional Sheets If Necessary

District I
1625 N. French Dr., Hobbs, NM 88240
District II
811 S. First St., Artesia, NM 88210
District III
1000 Rio Brazos Road, Aztec, NM 87410
District IV
1220 S. St. Francis Dr., Santa Fe, NM 87505

State of New Mexico
Energy Minerals and Natural Resources

Oil Conservation Division
1220 South St. Francis Dr.
Santa Fe, NM 87505

Form C-141
Revised August 8, 2011

Submit 1 Copy to appropriate District Office in
accordance with 19.15.29 NMAC.

Release Notification and Corrective Action

OPERATOR

☐ Initial Report ☒ Final Report

Name of Company	Oxy Permian	Contact	Tony Aguilar
Address	1017 W. Stanolind Road	Telephone No.	(575) 397-8251
Facility Name	NHU Satellite #27	Facility Type	Satellite
Surface Owner	Oxy	Mineral Owner	
		API No.	30-025-07408

LOCATION OF RELEASE

Unit Letter	Section	Township	Range	Feet from the	North/South Line	Feet from the	East/West Line	County
M	27	18S	38E					Lea County, NM

Latitude N 32.71366° Longitude W 103.14645°

NATURE OF RELEASE

Type of Release	Oil and Produced water	Volume of Release	15 bbls oil, 120 bbls produced water	Volume Recovered	90 bbls
Source of Release	Power loss caused the tank to spill over	Date and Hour of Occurrence	08/02/2015	Date and Hour of Discovery	
Was Immediate Notice Given?	<input checked="" type="checkbox"/> Yes <input type="checkbox"/> No <input type="checkbox"/> Not Required	If YES, To Whom?	Kellie Jones, NMOCD		
By Whom?	Tony Aguilar, Oxy	Date and Hour	08/02/2015		
Was a Watercourse Reached?	<input type="checkbox"/> Yes <input checked="" type="checkbox"/> No	If YES, Volume Impacting the Watercourse.			

If a Watercourse was Impacted, Describe Fully.*

Describe Cause of Problem and Remedial Action Taken.*

Power loss caused a tank to spill 15 bbls of oil and 120 bbls of produced water onto the ground. A vacuum truck recovered 90 bbls of fluids and the power was restored.

Describe Area Affected and Cleanup Action Taken.*

The area affected is approximately 750' x 25' off location, down a street, and into another location. Remediation was completed in accordance with the remediation plan approved by Jamie Keyes of NMOCD via email on 09/30/2015.

I hereby certify that the information given above is true and complete to the best of my knowledge and understand that pursuant to NMOCD rules and regulations all operators are required to report and/or file certain release notifications and perform corrective actions for releases which may endanger public health or the environment. The acceptance of a C-141 report by the NMOCD marked as "Final Report" does not relieve the operator of liability should their operations have failed to adequately investigate and remediate contamination that pose a threat to ground water, surface water, human health or the environment. In addition, NMOCD acceptance of a C-141 report does not relieve the operator of responsibility for compliance with any other federal, state, or local laws and/or regulations.

OIL CONSERVATION DIVISION

Signature: 


Printed Name: Tony Aguilar

Title: HES Specialist

E-mail Address: Raymond_aguilar@oxy.com

Date: 12-21-15

Phone: (575) 397-8251

Approved by Environmental Specialist: 

Approval Date: 12/31/2015

Expiration Date: ///

Conditions of Approval:

///

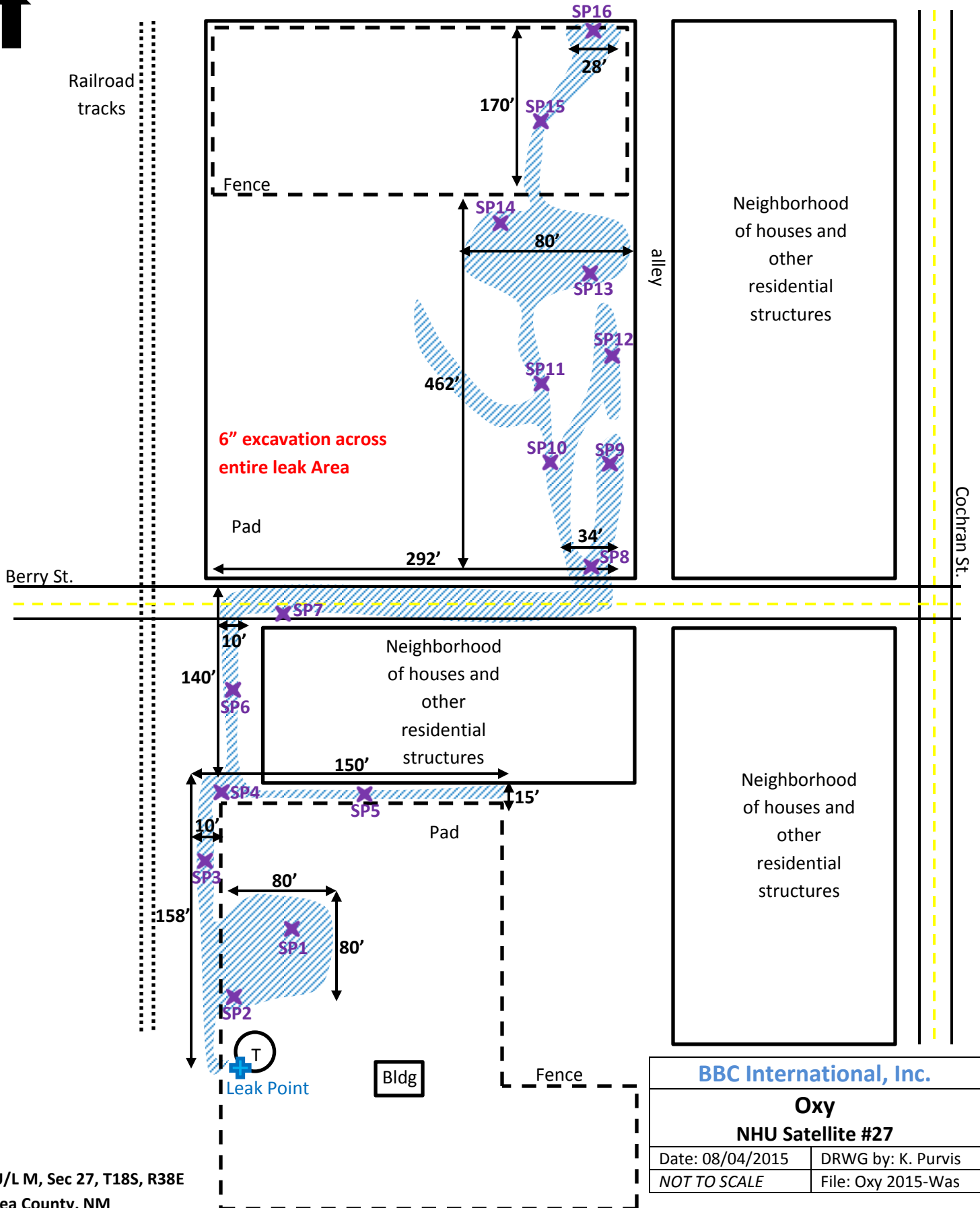
Attached ☐

1RP 3788

* Attach Additional Sheets If Necessary



Oxy
NHU Satellite #27



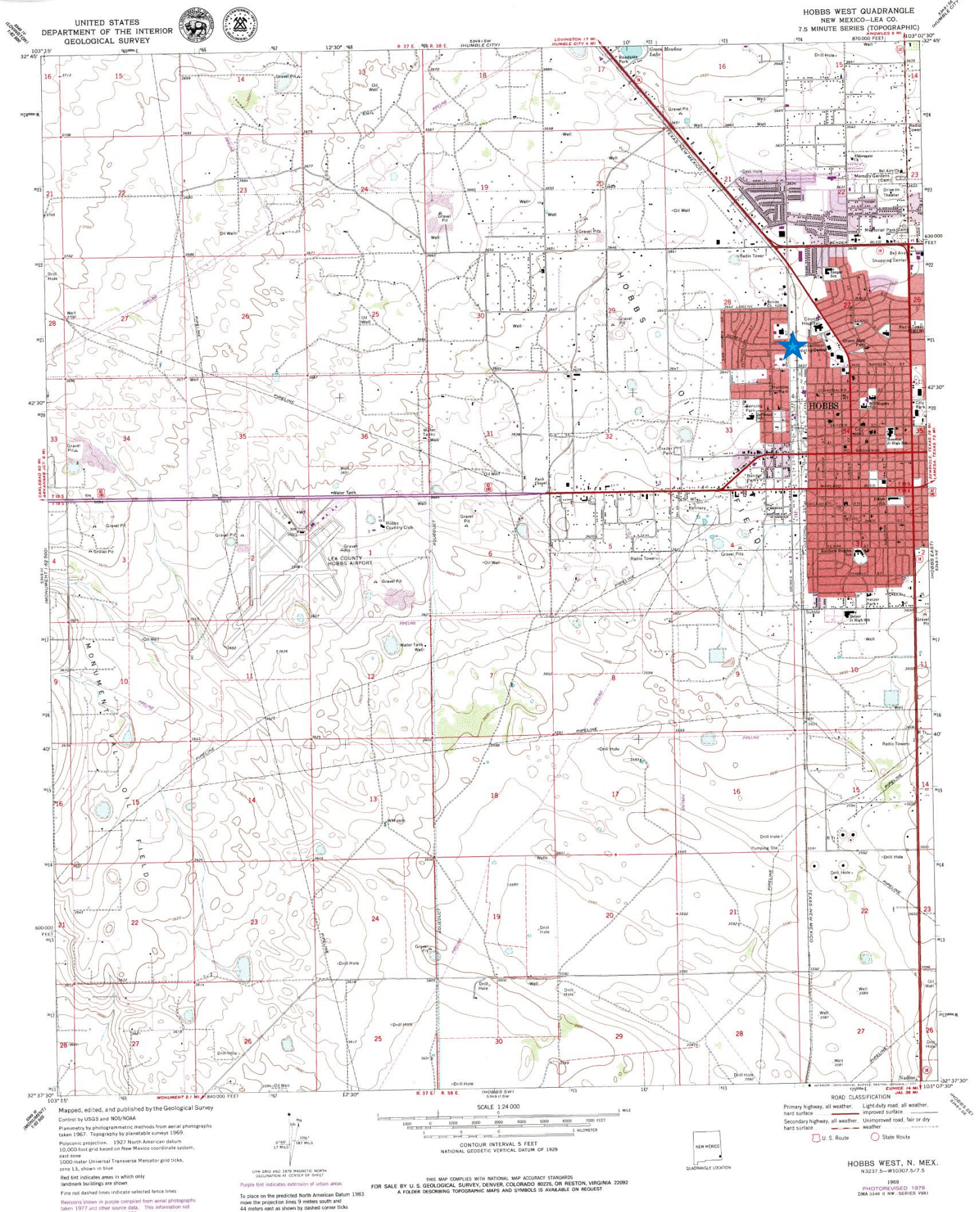
Oxy NHU Satellite #27

County	Unit Letter	Section	Township	Range
Lea	M	27	18S	38E

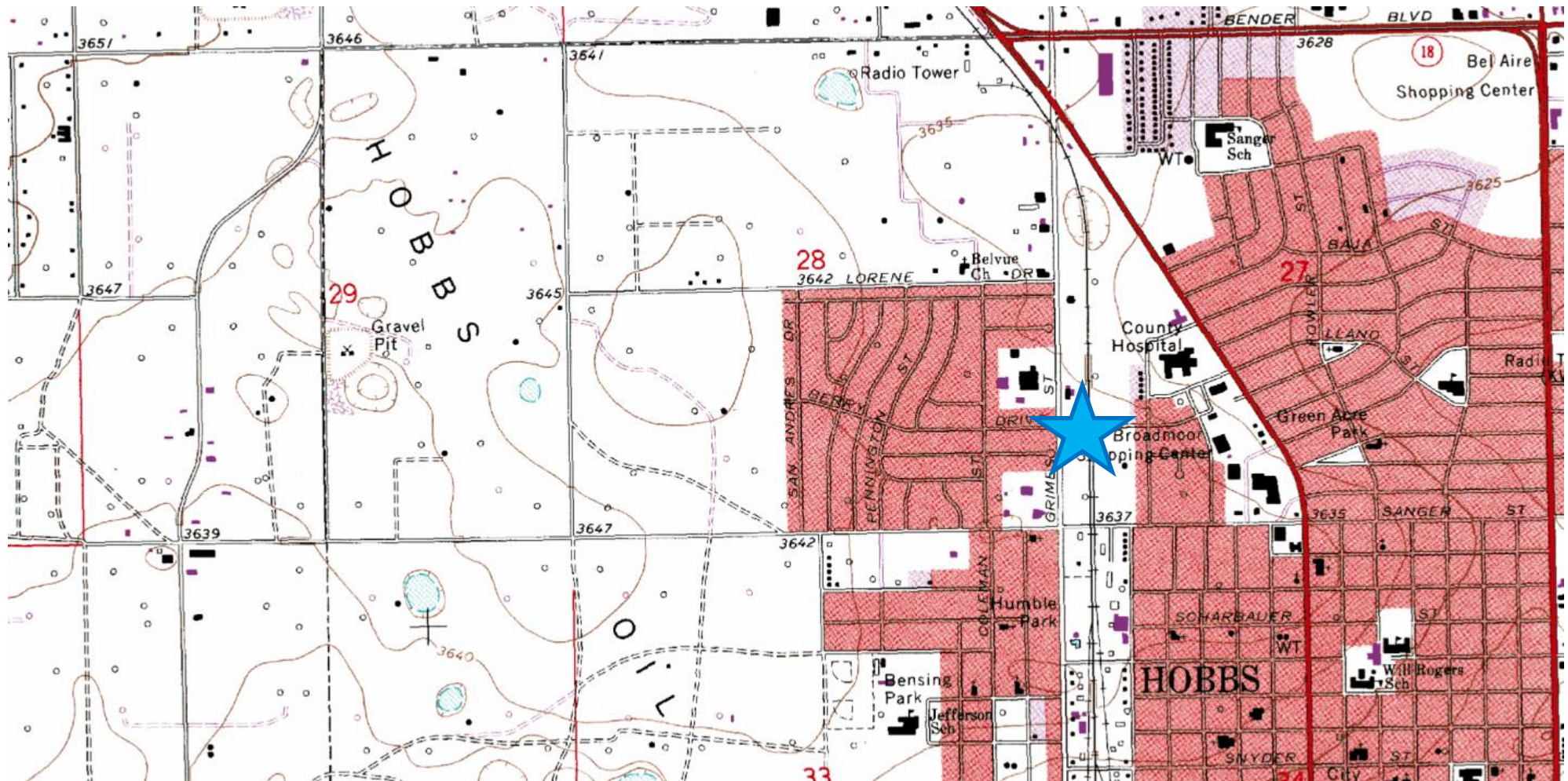
Trend Map 50'-100'



NHU Satellite #27



NHU Satellite #27



**Laboratory Analytical Results Summary
NHU Satellite #27**

		Sample	SP1 @ SURFACE	SP1 @ 1'	SP1 @ 2'	SP1 @ 3'
Analyte	Method	Date	8/13/15	8/13/15	8/13/15	8/13/15
			mg/Kg	mg/Kg	mg/Kg	mg/Kg
Benzene	BTEX 8021B		<0.050	<0.050	n/a	n/a
Toluene	BTEX 8021B		<0.050	<0.050	n/a	n/a
Ethylbenzene	BTEX 8021B		<0.050	<0.050	n/a	n/a
Total Xylenes	BTEX 8021B		<0.150	<0.150	n/a	n/a
Total BTEX	BTEX 8021B		<0.300	<0.300	n/a	n/a
Chloride	SM4500Cl-B		1600	32	32	32
GRO	TPH 8015M		<10.0	<10.0	n/a	n/a
DRO	TPH 8015M		<10.0	<10.0	n/a	n/a

		Sample	SP2 @ SURFACE	SP2 @ 1'	SP2 @ 2'	SP2 @ 3'
Analyte	Method	Date	8/13/15	8/13/15	8/13/15	8/13/15
			mg/Kg	mg/Kg	mg/Kg	mg/Kg
Benzene	BTEX 8021B		<0.050	<0.050	n/a	n/a
Toluene	BTEX 8021B		<0.050	<0.050	n/a	n/a
Ethylbenzene	BTEX 8021B		<0.050	<0.050	n/a	n/a
Total Xylenes	BTEX 8021B		<0.150	<0.150	n/a	n/a
Total BTEX	BTEX 8021B		<0.300	<0.300	n/a	n/a
Chloride	SM4500Cl-B		176	32	<16.0	144
GRO	TPH 8015M		<10.0	<10.0	n/a	n/a
DRO	TPH 8015M		<10.0	<10.0	n/a	n/a

		Sample	SP3 @ SURFACE	SP3 @ 1'	SP3 @ 2'
Analyte	Method	Date	8/13/15	8/13/15	8/13/15
			mg/Kg	mg/Kg	mg/Kg
Benzene	BTEX 8021B		<0.050	<0.050	n/a
Toluene	BTEX 8021B		<0.050	<0.050	n/a
Ethylbenzene	BTEX 8021B		<0.050	<0.050	n/a
Total Xylenes	BTEX 8021B		<0.150	<0.150	n/a
Total BTEX	BTEX 8021B		<0.300	<0.300	n/a
Chloride	SM4500Cl-B		1310	240	32
GRO	TPH 8015M		<10.0	<10.0	n/a
DRO	TPH 8015M		<10.0	<10.0	n/a

		Sample	SP4 @ SURFACE	SP4 @ 1'	SP4 @ 2'
Analyte	Method	Date	8/14/15	8/14/15	8/14/15
			mg/Kg	mg/Kg	mg/Kg
Benzene	BTEX 8021B		<0.050	<0.050	n/a
Toluene	BTEX 8021B		<0.050	<0.050	n/a
Ethylbenzene	BTEX 8021B		<0.050	<0.050	n/a
Total Xylenes	BTEX 8021B		<0.150	<0.150	n/a
Total BTEX	BTEX 8021B		<0.300	<0.300	n/a
Chloride	SM4500Cl-B		368	<16.0	<16.0
GRO	TPH 8015M		<50.0	<10.0	n/a
DRO	TPH 8015M		1050	<10.0	n/a

		Sample	SP5 @ SURFACE	SP5 @ 1'	SP5 @ 2'	SP5 @ 3'	SP5 @ 4'
Analyte	Method	Date	8/14/15	8/14/15	8/14/15	8/14/15	8/14/15
			mg/Kg	mg/Kg	mg/Kg	mg/Kg	mg/Kg
Benzene	BTEX 8021B		<0.050	<0.050	<0.050	n/a	n/a
Toluene	BTEX 8021B		<0.050	<0.050	<0.050	n/a	n/a
Ethylbenzene	BTEX 8021B		<0.050	<0.050	<0.050	n/a	n/a
Total Xylenes	BTEX 8021B		<0.150	<0.150	<0.150	n/a	n/a
Total BTEX	BTEX 8021B		<0.300	<0.300	<0.300	n/a	n/a
Chloride	SM4500Cl-B		448	32	32	<16.0	96
GRO	TPH 8015M		<50.0	<50.0	<10.0	n/a	n/a
DRO	TPH 8015M		909	254	<10.0	n/a	n/a

		Sample	SP6 @ SURFACE	SP6 @ 1'	SP6 @ 2'
Analyte	Method	Date	8/14/15	8/14/15	8/14/15
			mg/Kg	mg/Kg	mg/Kg
Benzene	BTEX 8021B		<0.050	<0.050	n/a
Toluene	BTEX 8021B		<0.050	<0.050	n/a
Ethylbenzene	BTEX 8021B		<0.050	<0.050	n/a
Total Xylenes	BTEX 8021B		<0.150	<0.150	n/a
Total BTEX	BTEX 8021B		<0.300	<0.300	n/a
Chloride	SM4500Cl-B		560	32	32
GRO	TPH 8015M		<100	<10.0	n/a
DRO	TPH 8015M		12900	<10.0	n/a

		Sample	SP7 @ SURFACE
Analyte	Method	Date	8/14/15
			mg/Kg
Benzene	BTEX 8021B		<0.050
Toluene	BTEX 8021B		<0.050
Ethylbenzene	BTEX 8021B		<0.050
Total Xylenes	BTEX 8021B		<0.150
Total BTEX	BTEX 8021B		<0.300
Chloride	SM4500Cl-B		<16.0
GRO	TPH 8015M		<50.0
DRO	TPH 8015M		<50.0

		Sample	SP8 @ SURFACE	SP8 @ 1'	SP8 @ 2'	SP8 @ 3'
Analyte	Method	Date	8/14/15	8/17/15	8/17/15	8/17/15
			mg/Kg	mg/Kg	mg/Kg	mg/Kg
Benzene	BTEX 8021B		<0.050	<0.050	n/a	n/a
Toluene	BTEX 8021B		<0.050	<0.050	n/a	n/a
Ethylbenzene	BTEX 8021B		<0.050	<0.050	n/a	n/a
Total Xylenes	BTEX 8021B		<0.150	<0.150	n/a	n/a
Total BTEX	BTEX 8021B		<0.300	<0.300	n/a	n/a
Chloride	SM4500Cl-B		240	<16.0	<16.0	<16.0
GRO	TPH 8015M		<100	<10.0	n/a	n/a
DRO	TPH 8015M		15000	<10.0	n/a	n/a

**Laboratory Analytical Results Summary
NHU Satellite #27**

		Sample	SP9 @ SURFACE	SP9 @ 1'
Analyte	Method	Date	8/17/15	8/17/15
			mg/Kg	mg/Kg
Benzene	BTEX 8021B		<0.050	<0.050
Toluene	BTEX 8021B		<0.050	<0.050
Ethylbenzene	BTEX 8021B		<0.050	<0.050
Total Xylenes	BTEX 8021B		<0.150	<0.150
Total BTEX	BTEX 8021B		<0.300	<0.300
Chloride	SM4500Cl-B		<16.0	<16.0
GRO	TPH 8015M		<100	<10.0
DRO	TPH 8015M		10400	<10.0

		Sample	SP10 @ SURFACE	SP10 @ 1'
Analyte	Method	Date	8/17/15	8/17/15
			mg/Kg	mg/Kg
Benzene	BTEX 8021B		<0.050	<0.050
Toluene	BTEX 8021B		<0.050	<0.050
Ethylbenzene	BTEX 8021B		<0.050	<0.050
Total Xylenes	BTEX 8021B		<0.150	<0.150
Total BTEX	BTEX 8021B		<0.300	<0.300
Chloride	SM4500Cl-B		<16.0	<16.0
GRO	TPH 8015M		<50.0	<10.0
DRO	TPH 8015M		1440	<10.0

		Sample	SP11 @ SURFACE	SP11 @ 1'
Analyte	Method	Date	8/17/15	8/17/15
			mg/Kg	mg/Kg
Benzene	BTEX 8021B		<0.050	<0.050
Toluene	BTEX 8021B		<0.050	<0.050
Ethylbenzene	BTEX 8021B		<0.050	<0.050
Total Xylenes	BTEX 8021B		<0.150	<0.150
Total BTEX	BTEX 8021B		<0.300	<0.300
Chloride	SM4500Cl-B		288	112
GRO	TPH 8015M		<50.0	<10.0
DRO	TPH 8015M		1680	<10.0

		Sample	SP12 @ SURFACE	SP12 @ 1'
Analyte	Method	Date	8/17/15	8/17/15
			mg/Kg	mg/Kg
Benzene	BTEX 8021B		<0.050	<0.050
Toluene	BTEX 8021B		<0.050	<0.050
Ethylbenzene	BTEX 8021B		<0.050	<0.050
Total Xylenes	BTEX 8021B		<0.150	<0.150
Total BTEX	BTEX 8021B		<0.300	<0.300
Chloride	SM4500Cl-B		<16.0	48
GRO	TPH 8015M		<100	<10.0
DRO	TPH 8015M		7700	<10.0

		Sample	SP13 @ SURFACE	SP13 @ 1'
Analyte	Method	Date	8/17/15	8/17/15
			mg/Kg	mg/Kg
Benzene	BTEX 8021B		<0.050	<0.050
Toluene	BTEX 8021B		<0.050	<0.050
Ethylbenzene	BTEX 8021B		<0.050	<0.050
Total Xylenes	BTEX 8021B		<0.150	<0.150
Total BTEX	BTEX 8021B		<0.300	<0.300
Chloride	SM4500Cl-B		<16.0	48
GRO	TPH 8015M		<50.0	<10.0
DRO	TPH 8015M		967	<10.0

		Sample	SP14 @ SURFACE	SP14 @ 1'
Analyte	Method	Date	8/17/15	8/18/15
			mg/Kg	mg/Kg
Benzene	BTEX 8021B		<0.050	<0.050
Toluene	BTEX 8021B		<0.050	<0.050
Ethylbenzene	BTEX 8021B		<0.050	<0.050
Total Xylenes	BTEX 8021B		<0.150	<0.150
Total BTEX	BTEX 8021B		<0.300	<0.300
Chloride	SM4500Cl-B		32	<16.0
GRO	TPH 8015M		<100	<10.0
DRO	TPH 8015M		6840	<10.0

		Sample	SP15 @ SURFACE	SP15 @ 1'
Analyte	Method	Date	8/18/15	8/18/15
			mg/Kg	mg/Kg
Benzene	BTEX 8021B		<0.050	<0.050
Toluene	BTEX 8021B		<0.050	<0.050
Ethylbenzene	BTEX 8021B		<0.050	<0.050
Total Xylenes	BTEX 8021B		<0.150	<0.150
Total BTEX	BTEX 8021B		<0.300	<0.300
Chloride	SM4500Cl-B		<16.0	<16.0
GRO	TPH 8015M		<100	<10.0
DRO	TPH 8015M		16600	<10.0

		Sample	SP16 @ SURFACE	SP16 @ 1'	SP16 @ 2'	SP16 @ 3'
Analyte	Method	Date	8/18/15	8/18/15	8/18/15	8/18/15
			mg/Kg	mg/Kg	mg/Kg	mg/Kg
Benzene	BTEX 8021B		<0.050	<0.050	n/a	n/a
Toluene	BTEX 8021B		<0.050	<0.050	n/a	n/a
Ethylbenzene	BTEX 8021B		<0.050	<0.050	n/a	n/a
Total Xylenes	BTEX 8021B		<0.150	<0.150	n/a	n/a
Total BTEX	BTEX 8021B		<0.300	<0.300	n/a	n/a
Chloride	SM4500Cl-B		<16.0	<16.0	<16.0	<16.0
GRO	TPH 8015M		<100	<10.0	n/a	n/a
DRO	TPH 8015M		4950	<10.0	n/a	n/a

August 25, 2015

Cliff Brunson

BBC International, Inc.

P.O. Box 805

Hobbs, NM 88241

RE: NHU SATELLITE #27

Enclosed are the results of analyses for samples received by the laboratory on 08/19/15 15:32.

Cardinal Laboratories is accredited through Texas NELAP under certificate number T104704398-13-5. Accreditation applies to drinking water, non-potable water and solid and chemical materials. All accredited analytes are denoted by an asterisk (*). For a complete list of accredited analytes and matrices visit the TCEQ website at www.tceq.texas.gov/field/qa/lab_accred_certif.html.

Cardinal Laboratories is accredited through the State of Colorado Department of Public Health and Environment for:

Method EPA 552.2	Haloacetic Acids (HAA-5)
Method EPA 524.2	Total Trihalomethanes (TTHM)
Method EPA 524.4	Regulated VOCs (V1, V2, V3)

Accreditation applies to public drinking water matrices.

This report meets NELAP requirements and is made up of a cover page, analytical results, and a copy of the original chain-of-custody. If you have any questions concerning this report, please feel free to contact me.

Sincerely,



Celey D. Keene

Lab Director/Quality Manager

Analytical Results For:

BBC International, Inc.
Cliff Brunson
P.O. Box 805
Hobbs NM, 88241
Fax To: (575) 397-0397

Received: 08/19/2015
Reported: 08/25/2015
Project Name: NHU SATELLITE #27
Project Number: NONE GIVEN
Project Location: LEA COUNTY, NM

Sampling Date: 08/13/2015
Sampling Type: Soil
Sampling Condition: Cool & Intact
Sample Received By: Judy Garcia

Sample ID: SP1 @ SURFACE (H502174-01)

BTX 8021B		mg/kg		Analyzed By: CK					
Analyte	Result	Reporting Limit	Analyzed	Method Blank	BS	% Recovery	True Value QC	RPD	Qualifier
Benzene*	<0.050	0.050	08/20/2015	ND	2.20	110	2.00	0.105	
Toluene*	<0.050	0.050	08/20/2015	ND	2.09	105	2.00	0.341	
Ethylbenzene*	<0.050	0.050	08/20/2015	ND	2.24	112	2.00	1.42	
Total Xylenes*	<0.150	0.150	08/20/2015	ND	6.28	105	6.00	1.26	
Total BTX	<0.300	0.300	08/20/2015	ND					

Surrogate: 4-Bromofluorobenzene (PID) 101 % 85.6-137

Chloride, SM4500Cl-B		mg/kg		Analyzed By: AP					
Analyte	Result	Reporting Limit	Analyzed	Method Blank	BS	% Recovery	True Value QC	RPD	Qualifier
Chloride	1200	16.0	08/21/2015	ND	416	104	400	3.77	

TPH 8015M		mg/kg		Analyzed By: CK					
Analyte	Result	Reporting Limit	Analyzed	Method Blank	BS	% Recovery	True Value QC	RPD	Qualifier
GRO C6-C10	<10.0	10.0	08/20/2015	ND	181	90.7	200	1.51	
DRO >C10-C28	<10.0	10.0	08/20/2015	ND	187	93.6	200	1.50	

Surrogate: 1-Chlorooctane 88.4 % 47.2-157

Surrogate: 1-Chlorooctadecane 87.6 % 52.1-176

Cardinal Laboratories

*=Accredited Analyte

PLEASE NOTE: Liability and Damages. Cardinal's liability and client's exclusive remedy for any claim arising, whether based in contract or tort, shall be limited to the amount paid by client for analyses. All claims, including those for negligence and any other cause whatsoever shall be deemed waived unless made in writing and received by Cardinal within thirty (30) days after completion of the applicable service. In no event shall Cardinal be liable for incidental or consequential damages, including, without limitation, business interruptions, loss of use, or loss of profits incurred by client, its subsidiaries, affiliates or successors arising out of or related to the performance of the services hereunder by Cardinal, regardless of whether such claim is based upon any of the above stated reasons or otherwise. Results relate only to the samples identified above. This report shall not be reproduced except in full with written approval of Cardinal Laboratories.



Celey D. Keene, Lab Director/Quality Manager

Analytical Results For:

BBC International, Inc.
Cliff Brunson
P.O. Box 805
Hobbs NM, 88241
Fax To: (575) 397-0397

Received: 08/19/2015
Reported: 08/25/2015
Project Name: NHU SATELLITE #27
Project Number: NONE GIVEN
Project Location: LEA COUNTY, NM

Sampling Date: 08/13/2015
Sampling Type: Soil
Sampling Condition: Cool & Intact
Sample Received By: Judy Garcia

Sample ID: SP1 @ 1' (H502174-02)

BTX 8021B		mg/kg		Analyzed By: CK					
Analyte	Result	Reporting Limit	Analyzed	Method Blank	BS	% Recovery	True Value QC	RPD	Qualifier
Benzene*	<0.050	0.050	08/20/2015	ND	2.20	110	2.00	0.105	
Toluene*	<0.050	0.050	08/20/2015	ND	2.09	105	2.00	0.341	
Ethylbenzene*	<0.050	0.050	08/20/2015	ND	2.24	112	2.00	1.42	
Total Xylenes*	<0.150	0.150	08/20/2015	ND	6.28	105	6.00	1.26	
Total BTX	<0.300	0.300	08/20/2015	ND					

Surrogate: 4-Bromofluorobenzene (PID) 103 % 85.6-137

Chloride, SM4500CI-B		mg/kg		Analyzed By: AP					
Analyte	Result	Reporting Limit	Analyzed	Method Blank	BS	% Recovery	True Value QC	RPD	Qualifier
Chloride	32.0	16.0	08/21/2015	ND	416	104	400	3.77	

TPH 8015M		mg/kg		Analyzed By: CK					
Analyte	Result	Reporting Limit	Analyzed	Method Blank	BS	% Recovery	True Value QC	RPD	Qualifier
GRO C6-C10	<10.0	10.0	08/20/2015	ND	181	90.7	200	1.51	
DRO >C10-C28	<10.0	10.0	08/20/2015	ND	187	93.6	200	1.50	

Surrogate: 1-Chlorooctane 88.4 % 47.2-157

Surrogate: 1-Chlorooctadecane 85.2 % 52.1-176

Sample ID: SP1 @ 2' (H502174-03)

Chloride, SM4500Cl-B		mg/kg		Analyzed By: AP					
Analyte	Result	Reporting Limit	Analyzed	Method Blank	BS	% Recovery	True Value QC	RPD	Qualifier
Chloride	32.0	16.0	08/21/2015	ND	416	104	400	3.77	

Cardinal Laboratories

*=Accredited Analyte

PLEASE NOTE: Liability and Damages. Cardinal's liability and client's exclusive remedy for any claim arising, whether based in contract or tort, shall be limited to the amount paid by client for analyses. All claims, including those for negligence and any other cause whatsoever shall be deemed waived unless made in writing and received by Cardinal within thirty (30) days after completion of the applicable service. In no event shall Cardinal be liable for incidental or consequential damages, including, without limitation, business interruptions, loss of use, or loss of profits incurred by client, its subsidiaries, affiliates or successors arising out of or related to the performance of the services hereunder by Cardinal, regardless of whether such claim is based upon any of the above stated reasons or otherwise. Results relate only to the samples identified above. This report shall not be reproduced except in full with written approval of Cardinal Laboratories.



Celey D. Keene, Lab Director/Quality Manager

Analytical Results For:

 BBC International, Inc.
 Cliff Brunson
 P.O. Box 805
 Hobbs NM, 88241
 Fax To: (575) 397-0397

 Received: 08/19/2015
 Reported: 08/25/2015
 Project Name: NHU SATELLITE #27
 Project Number: NONE GIVEN
 Project Location: LEA COUNTY, NM

 Sampling Date: 08/13/2015
 Sampling Type: Soil
 Sampling Condition: Cool & Intact
 Sample Received By: Judy Garcia

Sample ID: SP1 @ 3' (H502174-04)

Chloride, SM4500Cl-B		mg/kg		Analyzed By: AP					
Analyte	Result	Reporting Limit	Analyzed	Method Blank	BS	% Recovery	True Value QC	RPD	Qualifier
Chloride	32.0	16.0	08/21/2015	ND	416	104	400	3.77	

Sample ID: SP2 @ SURFACE (H502174-05)

BTEX 8021B		mg/kg		Analyzed By: CK					
Analyte	Result	Reporting Limit	Analyzed	Method Blank	BS	% Recovery	True Value QC	RPD	Qualifier
Benzene*	<0.050	0.050	08/20/2015	ND	2.20	110	2.00	0.105	
Toluene*	<0.050	0.050	08/20/2015	ND	2.09	105	2.00	0.341	
Ethylbenzene*	<0.050	0.050	08/20/2015	ND	2.24	112	2.00	1.42	
Total Xylenes*	<0.150	0.150	08/20/2015	ND	6.28	105	6.00	1.26	
Total BTEX	<0.300	0.300	08/20/2015	ND					

Surrogate: 4-Bromofluorobenzene (PID) 102 % 85.6-137

Chloride, SM4500Cl-B		mg/kg		Analyzed By: AP					
Analyte	Result	Reporting Limit	Analyzed	Method Blank	BS	% Recovery	True Value QC	RPD	Qualifier
Chloride	176	16.0	08/21/2015	ND	416	104	400	3.77	

TPH 8015M		mg/kg		Analyzed By: CK					
Analyte	Result	Reporting Limit	Analyzed	Method Blank	BS	% Recovery	True Value QC	RPD	Qualifier
GRO C6-C10	<10.0	10.0	08/20/2015	ND	181	90.7	200	1.51	
DRO >C10-C28	<10.0	10.0	08/20/2015	ND	187	93.6	200	1.50	

Surrogate: 1-Chlorooctane 89.7 % 47.2-157

Surrogate: 1-Chlorooctadecane 84.3 % 52.1-176

Cardinal Laboratories

*=Accredited Analyte

PLEASE NOTE: Liability and Damages. Cardinal's liability and client's exclusive remedy for any claim arising, whether based in contract or tort, shall be limited to the amount paid by client for analyses. All claims, including those for negligence and any other cause whatsoever shall be deemed waived unless made in writing and received by Cardinal within thirty (30) days after completion of the applicable service. In no event shall Cardinal be liable for incidental or consequential damages, including, without limitation, business interruptions, loss of use, or loss of profits incurred by client, its subsidiaries, affiliates or successors arising out of or related to the performance of the services hereunder by Cardinal, regardless of whether such claim is based upon any of the above stated reasons or otherwise. Results relate only to the samples identified above. This report shall not be reproduced except in full with written approval of Cardinal Laboratories.



Celey D. Keene, Lab Director/Quality Manager

Analytical Results For:

BBC International, Inc.
Cliff Brunson
P.O. Box 805
Hobbs NM, 88241
Fax To: (575) 397-0397

Received: 08/19/2015
Reported: 08/25/2015
Project Name: NHU SATELLITE #27
Project Number: NONE GIVEN
Project Location: LEA COUNTY, NM

Sampling Date: 08/13/2015
Sampling Type: Soil
Sampling Condition: Cool & Intact
Sample Received By: Judy Garcia

Sample ID: SP2 @ 1' (H502174-06)

BTX 8021B		mg/kg		Analyzed By: CK						
Analyte	Result	Reporting Limit	Analyzed	Method Blank	BS	% Recovery	True Value QC	RPD	Qualifier	
Benzene*	<0.050	0.050	08/20/2015	ND	2.20	110	2.00	0.105		
Toluene*	<0.050	0.050	08/20/2015	ND	2.09	105	2.00	0.341		
Ethylbenzene*	<0.050	0.050	08/20/2015	ND	2.24	112	2.00	1.42		
Total Xylenes*	<0.150	0.150	08/20/2015	ND	6.28	105	6.00	1.26		
Total BTX	<0.300	0.300	08/20/2015	ND						

Surrogate: 4-Bromofluorobenzene (PID) 103 % 85.6-137

Chloride, SM4500CI-B		mg/kg		Analyzed By: AP					
Analyte	Result	Reporting Limit	Analyzed	Method Blank	BS	% Recovery	True Value QC	RPD	Qualifier
Chloride	32.0	16.0	08/21/2015	ND	416	104	400	3.77	

TPH 8015M		mg/kg		Analyzed By: CK					
Analyte	Result	Reporting Limit	Analyzed	Method Blank	BS	% Recovery	True Value QC	RPD	Qualifier
GRO C6-C10	<10.0	10.0	08/20/2015	ND	181	90.7	200	1.51	
DRO >C10-C28	<10.0	10.0	08/20/2015	ND	187	93.6	200	1.50	

Surrogate: 1-Chlorooctane 86.1 % 47.2-157

Surrogate: 1-Chlorooctadecane 81.9 % 52.1-176

Sample ID: SP2 @ 2' (H502174-07)

Chloride, SM4500Cl-B		mg/kg		Analyzed By: AP						
Analyte	Result	Reporting Limit	Analyzed	Method Blank	BS	% Recovery	True Value QC	RPD	Qualifier	
Chloride	<16.0	16.0	08/21/2015	ND	416	104	400	3.77		

Cardinal Laboratories

*=Accredited Analyte

PLEASE NOTE: Liability and Damages. Cardinal's liability and client's exclusive remedy for any claim arising, whether based in contract or tort, shall be limited to the amount paid by client for analyses. All claims, including those for negligence and any other cause whatsoever shall be deemed waived unless made in writing and received by Cardinal within thirty (30) days after completion of the applicable service. In no event shall Cardinal be liable for incidental or consequential damages, including, without limitation, business interruptions, loss of use, or loss of profits incurred by client, its subsidiaries, affiliates or successors arising out of or related to the performance of the services hereunder by Cardinal, regardless of whether such claim is based upon any of the above stated reasons or otherwise. Results relate only to the samples identified above. This report shall not be reproduced except in full with written approval of Cardinal Laboratories.



Celey D. Keene, Lab Director/Quality Manager

Analytical Results For:

BBC International, Inc.
Cliff Brunson
P.O. Box 805
Hobbs NM, 88241
Fax To: (575) 397-0397

Received: 08/19/2015
Reported: 08/25/2015
Project Name: NHU SATELLITE #27
Project Number: NONE GIVEN
Project Location: LEA COUNTY, NM

Sampling Date: 08/13/2015
Sampling Type: Soil
Sampling Condition: Cool & Intact
Sample Received By: Judy Garcia

Sample ID: SP2 @ 3' (H502174-08)

Chloride, SM4500Cl-B		mg/kg		Analyzed By: AP					
Analyte	Result	Reporting Limit	Analyzed	Method Blank	BS	% Recovery	True Value QC	RPD	Qualifier
Chloride	144	16.0	08/21/2015	ND	416	104	400	3.77	

Sample ID: SP3 @ SURFACE (H502174-09)

BTEX 8021B		mg/kg		Analyzed By: CK					
Analyte	Result	Reporting Limit	Analyzed	Method Blank	BS	% Recovery	True Value QC	RPD	Qualifier
Benzene*	<0.050	0.050	08/20/2015	ND	2.20	110	2.00	0.105	
Toluene*	<0.050	0.050	08/20/2015	ND	2.09	105	2.00	0.341	
Ethylbenzene*	<0.050	0.050	08/20/2015	ND	2.24	112	2.00	1.42	
Total Xylenes*	<0.150	0.150	08/20/2015	ND	6.28	105	6.00	1.26	
Total BTEX	<0.300	0.300	08/20/2015	ND					

Surrogate: 4-Bromofluorobenzene (PID) 102 % 85.6-137

Chloride, SM4500Cl-B		mg/kg		Analyzed By: AP					
Analyte	Result	Reporting Limit	Analyzed	Method Blank	BS	% Recovery	True Value QC	RPD	Qualifier
Chloride	1310	16.0	08/21/2015	ND	416	104	400	3.77	

TPH 8015M		mg/kg		Analyzed By: CK					
Analyte	Result	Reporting Limit	Analyzed	Method Blank	BS	% Recovery	True Value QC	RPD	Qualifier
GRO C6-C10	<10.0	10.0	08/20/2015	ND	181	90.7	200	1.51	
DRO >C10-C28	<10.0	10.0	08/20/2015	ND	187	93.6	200	1.50	

Surrogate: 1-Chlorooctane 87.5 % 47.2-157

Surrogate: 1-Chlorooctadecane 84.2 % 52.1-176

Cardinal Laboratories

*=Accredited Analyte

PLEASE NOTE: Liability and Damages. Cardinal's liability and client's exclusive remedy for any claim arising, whether based in contract or tort, shall be limited to the amount paid by client for analyses. All claims, including those for negligence and any other cause whatsoever shall be deemed waived unless made in writing and received by Cardinal within thirty (30) days after completion of the applicable service. In no event shall Cardinal be liable for incidental or consequential damages, including, without limitation, business interruptions, loss of use, or loss of profits incurred by client, its subsidiaries, affiliates or successors arising out of or related to the performance of the services hereunder by Cardinal, regardless of whether such claim is based upon any of the above stated reasons or otherwise. Results relate only to the samples identified above. This report shall not be reproduced except in full with written approval of Cardinal Laboratories.



Celey D. Keene, Lab Director/Quality Manager

Analytical Results For:

BBC International, Inc.
Cliff Brunson
P.O. Box 805
Hobbs NM, 88241
Fax To: (575) 397-0397

Received: 08/19/2015
Reported: 08/25/2015
Project Name: NHU SATELLITE #27
Project Number: NONE GIVEN
Project Location: LEA COUNTY, NM

Sampling Date: 08/13/2015
Sampling Type: Soil
Sampling Condition: Cool & Intact
Sample Received By: Judy Garcia

Sample ID: SP3 @ 1' (H502174-10)

BTX 8021B		mg/kg		Analyzed By: CK					
Analyte	Result	Reporting Limit	Analyzed	Method Blank	BS	% Recovery	True Value QC	RPD	Qualifier
Benzene*	<0.050	0.050	08/20/2015	ND	2.20	110	2.00	0.105	
Toluene*	<0.050	0.050	08/20/2015	ND	2.09	105	2.00	0.341	
Ethylbenzene*	<0.050	0.050	08/20/2015	ND	2.24	112	2.00	1.42	
Total Xylenes*	<0.150	0.150	08/20/2015	ND	6.28	105	6.00	1.26	
Total BTX	<0.300	0.300	08/20/2015	ND					

Surrogate: 4-Bromofluorobenzene (PID) 103 % 85.6-137

Chloride, SM4500CI-B		mg/kg		Analyzed By: AP					
Analyte	Result	Reporting Limit	Analyzed	Method Blank	BS	% Recovery	True Value QC	RPD	Qualifier
Chloride	240	16.0	08/21/2015	ND	416	104	400	3.77	

TPH 8015M		mg/kg		Analyzed By: CK					
Analyte	Result	Reporting Limit	Analyzed	Method Blank	BS	% Recovery	True Value QC	RPD	Qualifier
GRO C6-C10	<10.0	10.0	08/20/2015	ND	181	90.7	200	1.51	
DRO >C10-C28	<10.0	10.0	08/20/2015	ND	187	93.6	200	1.50	

Surrogate: 1-Chlorooctane 85.4 % 47.2-157

Surrogate: 1-Chlorooctadecane 83.0 % 52.1-176

Sample ID: SP3 @ 2' (H502174-11)

Chloride, SM4500Cl-B		mg/kg		Analyzed By: AP					
Analyte	Result	Reporting Limit	Analyzed	Method Blank	BS	% Recovery	True Value QC	RPD	Qualifier
Chloride	32.0	16.0	08/21/2015	ND	416	104	400	3.77	

Cardinal Laboratories

*=Accredited Analyte

PLEASE NOTE: Liability and Damages. Cardinal's liability and client's exclusive remedy for any claim arising, whether based in contract or tort, shall be limited to the amount paid by client for analyses. All claims, including those for negligence and any other cause whatsoever shall be deemed waived unless made in writing and received by Cardinal within thirty (30) days after completion of the applicable service. In no event shall Cardinal be liable for incidental or consequential damages, including, without limitation, business interruptions, loss of use, or loss of profits incurred by client, its subsidiaries, affiliates or successors arising out of or related to the performance of the services hereunder by Cardinal, regardless of whether such claim is based upon any of the above stated reasons or otherwise. Results relate only to the samples identified above. This report shall not be reproduced except in full with written approval of Cardinal Laboratories.



Celey D. Keene, Lab Director/Quality Manager

Analytical Results For:

BBC International, Inc.
Cliff Brunson
P.O. Box 805
Hobbs NM, 88241
Fax To: (575) 397-0397

Received: 08/19/2015
Reported: 08/25/2015
Project Name: NHU SATELLITE #27
Project Number: NONE GIVEN
Project Location: LEA COUNTY, NM

Sampling Date: 08/14/2015
Sampling Type: Soil
Sampling Condition: Cool & Intact
Sample Received By: Judy Garcia

Sample ID: SP4 @ SURFACE (H502174-12)

BTX 8021B		mg/kg		Analyzed By: CK						
Analyte	Result	Reporting Limit	Analyzed	Method Blank	BS	% Recovery	True Value QC	RPD	Qualifier	
Benzene*	<0.050	0.050	08/21/2015	ND	2.20	110	2.00	0.105		
Toluene*	<0.050	0.050	08/21/2015	ND	2.09	105	2.00	0.341		
Ethylbenzene*	<0.050	0.050	08/21/2015	ND	2.24	112	2.00	1.42		
Total Xylenes*	<0.150	0.150	08/21/2015	ND	6.28	105	6.00	1.26		
Total BTX	<0.300	0.300	08/21/2015	ND						

Surrogate: 4-Bromofluorobenzene (PID) 101 % 85.6-137

Chloride, SM4500CI-B		mg/kg		Analyzed By: AP					
Analyte	Result	Reporting Limit	Analyzed	Method Blank	BS	% Recovery	True Value QC	RPD	Qualifier
Chloride	368	16.0	08/21/2015	ND	416	104	400	3.77	

TPH 8015M		mg/kg		Analyzed By: CK					
Analyte	Result	Reporting Limit	Analyzed	Method Blank	BS	% Recovery	True Value QC	RPD	Qualifier
GRO C6-C10	<50.0	50.0	08/20/2015	ND	181	90.7	200	1.51	
DRO >C10-C28	1050	50.0	08/20/2015	ND	187	93.6	200	1.50	

Surrogate: 1-Chlorooctane 77.2 % 47.2-157

Surrogate: 1-Chlorooctadecane 120 % 52.1-176

Cardinal Laboratories

*=Accredited Analyte

PLEASE NOTE: Liability and Damages. Cardinal's liability and client's exclusive remedy for any claim arising, whether based in contract or tort, shall be limited to the amount paid by client for analyses. All claims, including those for negligence and any other cause whatsoever shall be deemed waived unless made in writing and received by Cardinal within thirty (30) days after completion of the applicable service. In no event shall Cardinal be liable for incidental or consequential damages, including, without limitation, business interruptions, loss of use, or loss of profits incurred by client, its subsidiaries, affiliates or successors arising out of or related to the performance of the services hereunder by Cardinal, regardless of whether such claim is based upon any of the above stated reasons or otherwise. Results relate only to the samples identified above. This report shall not be reproduced except in full with written approval of Cardinal Laboratories.



Celey D. Keene, Lab Director/Quality Manager

Analytical Results For:

BBC International, Inc.
Cliff Brunson
P.O. Box 805
Hobbs NM, 88241
Fax To: (575) 397-0397

Received: 08/19/2015
Reported: 08/25/2015
Project Name: NHU SATELLITE #27
Project Number: NONE GIVEN
Project Location: LEA COUNTY, NM

Sampling Date: 08/14/2015
Sampling Type: Soil
Sampling Condition: Cool & Intact
Sample Received By: Judy Garcia

Sample ID: SP4 @ 1' (H502174-13)

BTX 8021B		mg/kg		Analyzed By: CK					
Analyte	Result	Reporting Limit	Analyzed	Method Blank	BS	% Recovery	True Value QC	RPD	Qualifier
Benzene*	<0.050	0.050	08/21/2015	ND	2.20	110	2.00	0.105	
Toluene*	<0.050	0.050	08/21/2015	ND	2.09	105	2.00	0.341	
Ethylbenzene*	<0.050	0.050	08/21/2015	ND	2.24	112	2.00	1.42	
Total Xylenes*	<0.150	0.150	08/21/2015	ND	6.28	105	6.00	1.26	
Total BTX	<0.300	0.300	08/21/2015	ND					

Surrogate: 4-Bromofluorobenzene (PID) 104 % 85.6-137

Chloride, SM4500CI-B		mg/kg		Analyzed By: AP					
Analyte	Result	Reporting Limit	Analyzed	Method Blank	BS	% Recovery	True Value QC	RPD	Qualifier
Chloride	<16.0	16.0	08/21/2015	ND	416	104	400	3.77	

TPH 8015M		mg/kg		Analyzed By: CK					
Analyte	Result	Reporting Limit	Analyzed	Method Blank	BS	% Recovery	True Value QC	RPD	Qualifier
GRO C6-C10	<10.0	10.0	08/20/2015	ND	181	90.7	200	1.51	
DRO >C10-C28	<10.0	10.0	08/20/2015	ND	187	93.6	200	1.50	

Surrogate: 1-Chlorooctane 95.3 % 47.2-157

Surrogate: 1-Chlorooctadecane 103 % 52.1-176

Sample ID: SP4 @ 2' (H502174-14)

Chloride, SM4500Cl-B		mg/kg		Analyzed By: AP						
Analyte	Result	Reporting Limit	Analyzed	Method Blank	BS	% Recovery	True Value QC	RPD	Qualifier	
Chloride	<16.0	16.0	08/21/2015	ND	416	104	400	3.77		

Cardinal Laboratories

*=Accredited Analyte

PLEASE NOTE: Liability and Damages. Cardinal's liability and client's exclusive remedy for any claim arising, whether based in contract or tort, shall be limited to the amount paid by client for analyses. All claims, including those for negligence and any other cause whatsoever shall be deemed waived unless made in writing and received by Cardinal within thirty (30) days after completion of the applicable service. In no event shall Cardinal be liable for incidental or consequential damages, including, without limitation, business interruptions, loss of use, or loss of profits incurred by client, its subsidiaries, affiliates or successors arising out of or related to the performance of the services hereunder by Cardinal, regardless of whether such claim is based upon any of the above stated reasons or otherwise. Results relate only to the samples identified above. This report shall not be reproduced except in full with written approval of Cardinal Laboratories.



Celey D. Keene, Lab Director/Quality Manager

Analytical Results For:

BBC International, Inc.
Cliff Brunson
P.O. Box 805
Hobbs NM, 88241
Fax To: (575) 397-0397

Received: 08/19/2015
Reported: 08/25/2015
Project Name: NHU SATELLITE #27
Project Number: NONE GIVEN
Project Location: LEA COUNTY, NM

Sampling Date: 08/14/2015
Sampling Type: Soil
Sampling Condition: Cool & Intact
Sample Received By: Judy Garcia

Sample ID: SP5 @ SURFACE (H502174-15)

BTX 8021B		mg/kg		Analyzed By: CK					
Analyte	Result	Reporting Limit	Analyzed	Method Blank	BS	% Recovery	True Value QC	RPD	Qualifier
Benzene*	<0.050	0.050	08/21/2015	ND	2.20	110	2.00	0.105	
Toluene*	<0.050	0.050	08/21/2015	ND	2.09	105	2.00	0.341	
Ethylbenzene*	<0.050	0.050	08/21/2015	ND	2.24	112	2.00	1.42	
Total Xylenes*	<0.150	0.150	08/21/2015	ND	6.28	105	6.00	1.26	
Total BTX	<0.300	0.300	08/21/2015	ND					

Surrogate: 4-Bromofluorobenzene (PID) 101 % 85.6-137

Chloride, SM4500CI-B		mg/kg		Analyzed By: AP					
Analyte	Result	Reporting Limit	Analyzed	Method Blank	BS	% Recovery	True Value QC	RPD	Qualifier
Chloride	448	16.0	08/21/2015	ND	416	104	400	3.77	

TPH 8015M		mg/kg		Analyzed By: CK					
Analyte	Result	Reporting Limit	Analyzed	Method Blank	BS	% Recovery	True Value QC	RPD	Qualifier
GRO C6-C10	<50.0	50.0	08/20/2015	ND	181	90.7	200	1.51	
DRO >C10-C28	909	50.0	08/20/2015	ND	187	93.6	200	1.50	

Surrogate: 1-Chlorooctane 72.4 % 47.2-157

Surrogate: 1-Chlorooctadecane 116 % 52.1-176

Cardinal Laboratories

*=Accredited Analyte

PLEASE NOTE: Liability and Damages. Cardinal's liability and client's exclusive remedy for any claim arising, whether based in contract or tort, shall be limited to the amount paid by client for analyses. All claims, including those for negligence and any other cause whatsoever shall be deemed waived unless made in writing and received by Cardinal within thirty (30) days after completion of the applicable service. In no event shall Cardinal be liable for incidental or consequential damages, including, without limitation, business interruptions, loss of use, or loss of profits incurred by client, its subsidiaries, affiliates or successors arising out of or related to the performance of the services hereunder by Cardinal, regardless of whether such claim is based upon any of the above stated reasons or otherwise. Results relate only to the samples identified above. This report shall not be reproduced except in full with written approval of Cardinal Laboratories.



Celey D. Keene, Lab Director/Quality Manager

Analytical Results For:

 BBC International, Inc.
 Cliff Brunson
 P.O. Box 805
 Hobbs NM, 88241
 Fax To: (575) 397-0397

 Received: 08/19/2015
 Reported: 08/25/2015
 Project Name: NHU SATELLITE #27
 Project Number: NONE GIVEN
 Project Location: LEA COUNTY, NM

 Sampling Date: 08/14/2015
 Sampling Type: Soil
 Sampling Condition: Cool & Intact
 Sample Received By: Judy Garcia

Sample ID: SP5 @ 1' (H502174-16)

BTX 8021B		mg/kg		Analyzed By: CK					
Analyte	Result	Reporting Limit	Analyzed	Method Blank	BS	% Recovery	True Value QC	RPD	Qualifier
Benzene*	<0.050	0.050	08/21/2015	ND	2.20	110	2.00	0.105	
Toluene*	<0.050	0.050	08/21/2015	ND	2.09	105	2.00	0.341	
Ethylbenzene*	<0.050	0.050	08/21/2015	ND	2.24	112	2.00	1.42	
Total Xylenes*	<0.150	0.150	08/21/2015	ND	6.28	105	6.00	1.26	
Total BTX	<0.300	0.300	08/21/2015	ND					

Surrogate: 4-Bromofluorobenzene (PID) 99.3 % 85.6-137

Chloride, SM4500Cl-B		mg/kg		Analyzed By: AP					
Analyte	Result	Reporting Limit	Analyzed	Method Blank	BS	% Recovery	True Value QC	RPD	Qualifier
Chloride	32.0	16.0	08/21/2015	ND	416	104	400	3.77	

TPH 8015M		mg/kg		Analyzed By: CK					
Analyte	Result	Reporting Limit	Analyzed	Method Blank	BS	% Recovery	True Value QC	RPD	Qualifier
GRO C6-C10	<50.0	50.0	08/20/2015	ND	181	90.7	200	1.51	
DRO >C10-C28	254	50.0	08/20/2015	ND	187	93.6	200	1.50	

Surrogate: 1-Chlorooctane 71.3 % 47.2-157

Surrogate: 1-Chlorooctadecane 99.9 % 52.1-176

Cardinal Laboratories

*=Accredited Analyte

PLEASE NOTE: Liability and Damages. Cardinal's liability and client's exclusive remedy for any claim arising, whether based in contract or tort, shall be limited to the amount paid by client for analyses. All claims, including those for negligence and any other cause whatsoever shall be deemed waived unless made in writing and received by Cardinal within thirty (30) days after completion of the applicable service. In no event shall Cardinal be liable for incidental or consequential damages, including, without limitation, business interruptions, loss of use, or loss of profits incurred by client, its subsidiaries, affiliates or successors arising out of or related to the performance of the services hereunder by Cardinal, regardless of whether such claim is based upon any of the above stated reasons or otherwise. Results relate only to the samples identified above. This report shall not be reproduced except in full with written approval of Cardinal Laboratories.



Celey D. Keene, Lab Director/Quality Manager

Analytical Results For:

BBC International, Inc.
Cliff Brunson
P.O. Box 805
Hobbs NM, 88241
Fax To: (575) 397-0397

Received: 08/19/2015
Reported: 08/25/2015
Project Name: NHU SATELLITE #27
Project Number: NONE GIVEN
Project Location: LEA COUNTY, NM

Sampling Date: 08/14/2015
Sampling Type: Soil
Sampling Condition: Cool & Intact
Sample Received By: Judy Garcia

Sample ID: SP5 @ 2' (H502174-17)

BTX 8021B		mg/kg		Analyzed By: CK					
Analyte	Result	Reporting Limit	Analyzed	Method Blank	BS	% Recovery	True Value QC	RPD	Qualifier
Benzene*	<0.050	0.050	08/21/2015	ND	2.20	110	2.00	0.105	
Toluene*	<0.050	0.050	08/21/2015	ND	2.09	105	2.00	0.341	
Ethylbenzene*	<0.050	0.050	08/21/2015	ND	2.24	112	2.00	1.42	
Total Xylenes*	<0.150	0.150	08/21/2015	ND	6.28	105	6.00	1.26	
Total BTX	<0.300	0.300	08/21/2015	ND					

Surrogate: 4-Bromofluorobenzene (PID) 102 % 85.6-137

Chloride, SM4500CI-B		mg/kg		Analyzed By: AP					
Analyte	Result	Reporting Limit	Analyzed	Method Blank	BS	% Recovery	True Value QC	RPD	Qualifier
Chloride	32.0	16.0	08/21/2015	ND	416	104	400	3.77	

TPH 8015M		mg/kg		Analyzed By: CK					
Analyte	Result	Reporting Limit	Analyzed	Method Blank	BS	% Recovery	True Value QC	RPD	Qualifier
GRO C6-C10	<10.0	10.0	08/20/2015	ND	181	90.7	200	1.51	
DRO >C10-C28	<10.0	10.0	08/20/2015	ND	187	93.6	200	1.50	

Surrogate: 1-Chlorooctane 98.5 % 47.2-157

Surrogate: 1-Chlorooctadecane 103 % 52.1-176

Sample ID: SP5 @ 3' (H502174-18)

Chloride, SM4500Cl-B		mg/kg		Analyzed By: AP						
Analyte	Result	Reporting Limit	Analyzed	Method Blank	BS	% Recovery	True Value QC	RPD	Qualifier	
Chloride	<16.0	16.0	08/21/2015	ND	400	100	400	3.92		

Cardinal Laboratories

*=Accredited Analyte

PLEASE NOTE: Liability and Damages. Cardinal's liability and client's exclusive remedy for any claim arising, whether based in contract or tort, shall be limited to the amount paid by client for analyses. All claims, including those for negligence and any other cause whatsoever shall be deemed waived unless made in writing and received by Cardinal within thirty (30) days after completion of the applicable service. In no event shall Cardinal be liable for incidental or consequential damages, including, without limitation, business interruptions, loss of use, or loss of profits incurred by client, its subsidiaries, affiliates or successors arising out of or related to the performance of the services hereunder by Cardinal, regardless of whether such claim is based upon any of the above stated reasons or otherwise. Results relate only to the samples identified above. This report shall not be reproduced except in full with written approval of Cardinal Laboratories.



Celey D. Keene, Lab Director/Quality Manager

Analytical Results For:

BBC International, Inc.
Cliff Brunson
P.O. Box 805
Hobbs NM, 88241
Fax To: (575) 397-0397

Received: 08/19/2015
Reported: 08/25/2015
Project Name: NHU SATELLITE #27
Project Number: NONE GIVEN
Project Location: LEA COUNTY, NM

Sampling Date: 08/14/2015
Sampling Type: Soil
Sampling Condition: Cool & Intact
Sample Received By: Judy Garcia

Sample ID: SP5 @ 4' (H502174-19)

Chloride, SM4500Cl-B		mg/kg		Analyzed By: AP					
Analyte	Result	Reporting Limit	Analyzed	Method Blank	BS	% Recovery	True Value QC	RPD	Qualifier
Chloride	96.0	16.0	08/21/2015	ND	400	100	400	3.92	

Sample ID: SP6 @ SURFACE (H502174-20)

BTEx 8021B		mg/kg		Analyzed By: CK					
Analyte	Result	Reporting Limit	Analyzed	Method Blank	BS	% Recovery	True Value QC	RPD	Qualifier
Benzene*	<0.050	0.050	08/21/2015	ND	2.20	110	2.00	2.72	
Toluene*	<0.050	0.050	08/21/2015	ND	2.07	104	2.00	4.13	
Ethylbenzene*	<0.050	0.050	08/21/2015	ND	2.19	110	2.00	4.91	
Total Xylenes*	<0.150	0.150	08/21/2015	ND	6.20	103	6.00	3.62	
Total BTEx	<0.300	0.300	08/21/2015	ND					

Surrogate: 4-Bromofluorobenzene (PID) 110 % 85.6-137

Chloride, SM4500CI-B		mg/kg		Analyzed By: AP					
Analyte	Result	Reporting Limit	Analyzed	Method Blank	BS	% Recovery	True Value QC	RPD	Qualifier
Chloride	560	16.0	08/21/2015	ND	400	100	400	3.92	

TPH 8015M		mg/kg		Analyzed By: CK				S-06	
Analyte	Result	Reporting Limit	Analyzed	Method Blank	BS	% Recovery	True Value QC	RPD	Qualifier
GRO C6-C10	<100	100	08/20/2015	ND	181	90.7	200	1.51	
DRO >C10-C28	12900	100	08/20/2015	ND	187	93.6	200	1.50	

Surrogate: 1-Chlorooctane 116 % 47.2-157

Surrogate: 1-Chlorooctadecane 216 % 52.1-176

Cardinal Laboratories

*=Accredited Analyte

PLEASE NOTE: Liability and Damages. Cardinal's liability and client's exclusive remedy for any claim arising, whether based in contract or tort, shall be limited to the amount paid by client for analyses. All claims, including those for negligence and any other cause whatsoever shall be deemed waived unless made in writing and received by Cardinal within thirty (30) days after completion of the applicable service. In no event shall Cardinal be liable for incidental or consequential damages, including, without limitation, business interruptions, loss of use, or loss of profits incurred by client, its subsidiaries, affiliates or successors arising out of or related to the performance of the services hereunder by Cardinal, regardless of whether such claim is based upon any of the above stated reasons or otherwise. Results relate only to the samples identified above. This report shall not be reproduced except in full with written approval of Cardinal Laboratories.



Celey D. Keene, Lab Director/Quality Manager

Analytical Results For:

BBC International, Inc.
Cliff Brunson
P.O. Box 805
Hobbs NM, 88241
Fax To: (575) 397-0397

Received: 08/19/2015
Reported: 08/25/2015
Project Name: NHU SATELLITE #27
Project Number: NONE GIVEN
Project Location: LEA COUNTY, NM

Sampling Date: 08/14/2015
Sampling Type: Soil
Sampling Condition: Cool & Intact
Sample Received By: Judy Garcia

Sample ID: SP6 @ 1' (H502174-21)

BTX 8021B		mg/kg		Analyzed By: CK						
Analyte	Result	Reporting Limit	Analyzed	Method Blank	BS	% Recovery	True Value QC	RPD	Qualifier	
Benzene*	<0.050	0.050	08/21/2015	ND	2.20	110	2.00	2.72		
Toluene*	<0.050	0.050	08/21/2015	ND	2.07	104	2.00	4.13		
Ethylbenzene*	<0.050	0.050	08/21/2015	ND	2.19	110	2.00	4.91		
Total Xylenes*	<0.150	0.150	08/21/2015	ND	6.20	103	6.00	3.62		
Total BTX	<0.300	0.300	08/21/2015	ND						

Surrogate: 4-Bromofluorobenzene (PID) 104 % 85.6-137

Chloride, SM4500CI-B		mg/kg		Analyzed By: AP					
Analyte	Result	Reporting Limit	Analyzed	Method Blank	BS	% Recovery	True Value QC	RPD	Qualifier
Chloride	32.0	16.0	08/21/2015	ND	400	100	400	3.92	

TPH 8015M		mg/kg		Analyzed By: CK					
Analyte	Result	Reporting Limit	Analyzed	Method Blank	BS	% Recovery	True Value QC	RPD	Qualifier
GRO C6-C10	<10.0	10.0	08/21/2015	ND	181	90.7	200	1.51	
DRO >C10-C28	<10.0	10.0	08/21/2015	ND	187	93.6	200	1.50	

Surrogate: 1-Chlorooctane 80.5 % 47.2-157

Surrogate: 1-Chlorooctadecane 72.4 % 52.1-176

Sample ID: SP6 @ 2' (H502174-22)

Chloride, SM4500Cl-B		mg/kg		Analyzed By: AP					
Analyte	Result	Reporting Limit	Analyzed	Method Blank	BS	% Recovery	True Value QC	RPD	Qualifier
Chloride	32.0	16.0	08/21/2015	ND	400	100	400	3.92	

Cardinal Laboratories

*=Accredited Analyte

PLEASE NOTE: Liability and Damages. Cardinal's liability and client's exclusive remedy for any claim arising, whether based in contract or tort, shall be limited to the amount paid by client for analyses. All claims, including those for negligence and any other cause whatsoever shall be deemed waived unless made in writing and received by Cardinal within thirty (30) days after completion of the applicable service. In no event shall Cardinal be liable for incidental or consequential damages, including, without limitation, business interruptions, loss of use, or loss of profits incurred by client, its subsidiaries, affiliates or successors arising out of or related to the performance of the services hereunder by Cardinal, regardless of whether such claim is based upon any of the above stated reasons or otherwise. Results relate only to the samples identified above. This report shall not be reproduced except in full with written approval of Cardinal Laboratories.



Celey D. Keene, Lab Director/Quality Manager

Analytical Results For:

BBC International, Inc.
Cliff Brunson
P.O. Box 805
Hobbs NM, 88241
Fax To: (575) 397-0397

Received: 08/19/2015
Reported: 08/25/2015
Project Name: NHU SATELLITE #27
Project Number: NONE GIVEN
Project Location: LEA COUNTY, NM

Sampling Date: 08/14/2015
Sampling Type: Soil
Sampling Condition: Cool & Intact
Sample Received By: Judy Garcia

Sample ID: SP7 @ SURFACE (H502174-23)

BTEX 8021B		mg/kg		Analyzed By: CK						
Analyte	Result	Reporting Limit	Analyzed	Method Blank	BS	% Recovery	True Value QC	RPD	Qualifier	
Benzene*	<0.050	0.050	08/21/2015	ND	2.20	110	2.00	2.72		
Toluene*	<0.050	0.050	08/21/2015	ND	2.07	104	2.00	4.13		
Ethylbenzene*	<0.050	0.050	08/21/2015	ND	2.19	110	2.00	4.91		
Total Xylenes*	<0.150	0.150	08/21/2015	ND	6.20	103	6.00	3.62		
Total BTEX	<0.300	0.300	08/21/2015	ND						

Surrogate: 4-Bromofluorobenzene (PID) 102 % 85.6-137

Chloride, SM4500CI-B		mg/kg		Analyzed By: AP						
Analyte	Result	Reporting Limit	Analyzed	Method Blank	BS	% Recovery	True Value QC	RPD	Qualifier	
Chloride	<16.0	16.0	08/21/2015	ND	400	100	400	3.92		

TPH 8015M		mg/kg		Analyzed By: CK					
Analyte	Result	Reporting Limit	Analyzed	Method Blank	BS	% Recovery	True Value QC	RPD	Qualifier
GRO C6-C10	<50.0	50.0	08/21/2015	ND	181	90.7	200	1.51	
DRO >C10-C28	<50.0	50.0	08/21/2015	ND	187	93.6	200	1.50	

Surrogate: 1-Chlorooctane 91.9 % 47.2-157

Surrogate: 1-Chlorooctadecane 84.1 % 52.1-176

Cardinal Laboratories

*=Accredited Analyte

PLEASE NOTE: Liability and Damages. Cardinal's liability and client's exclusive remedy for any claim arising, whether based in contract or tort, shall be limited to the amount paid by client for analyses. All claims, including those for negligence and any other cause whatsoever shall be deemed waived unless made in writing and received by Cardinal within thirty (30) days after completion of the applicable service. In no event shall Cardinal be liable for incidental or consequential damages, including, without limitation, business interruptions, loss of use, or loss of profits incurred by client, its subsidiaries, affiliates or successors arising out of or related to the performance of the services hereunder by Cardinal, regardless of whether such claim is based upon any of the above stated reasons or otherwise. Results relate only to the samples identified above. This report shall not be reproduced except in full with written approval of Cardinal Laboratories.



Celey D. Keene, Lab Director/Quality Manager

Analytical Results For:

BBC International, Inc.
Cliff Brunson
P.O. Box 805
Hobbs NM, 88241
Fax To: (575) 397-0397

Received: 08/19/2015
Reported: 08/25/2015
Project Name: NHU SATELLITE #27
Project Number: NONE GIVEN
Project Location: LEA COUNTY, NM

Sampling Date: 08/14/2015
Sampling Type: Soil
Sampling Condition: Cool & Intact
Sample Received By: Judy Garcia

Sample ID: SP8 @ SURFACE (H502174-24)

BTX 8021B		mg/kg		Analyzed By: CK						
Analyte	Result	Reporting Limit	Analyzed	Method Blank	BS	% Recovery	True Value QC	RPD	Qualifier	
Benzene*	<0.050	0.050	08/21/2015	ND	2.20	110	2.00	2.72		
Toluene*	<0.050	0.050	08/21/2015	ND	2.07	104	2.00	4.13		
Ethylbenzene*	<0.050	0.050	08/21/2015	ND	2.19	110	2.00	4.91		
Total Xylenes*	<0.150	0.150	08/21/2015	ND	6.20	103	6.00	3.62		
Total BTX	<0.300	0.300	08/21/2015	ND						

Surrogate: 4-Bromofluorobenzene (PID) 101 % 85.6-137

Chloride, SM4500Cl-B		mg/kg		Analyzed By: AP					
Analyte	Result	Reporting Limit	Analyzed	Method Blank	BS	% Recovery	True Value QC	RPD	Qualifier
Chloride	240	16.0	08/21/2015	ND	400	100	400	3.92	

TPH 8015M		mg/kg		Analyzed By: CK				S-06	
Analyte	Result	Reporting Limit	Analyzed	Method Blank	BS	% Recovery	True Value QC	RPD	Qualifier
GRO C6-C10	<100	100	08/21/2015	ND	181	90.7	200	1.51	
DRO >C10-C28	15000	100	08/21/2015	ND	187	93.6	200	1.50	

Surrogate: 1-Chlorooctane 94.4 % 47.2-157

Surrogate: 1-Chlorooctadecane 276 % 52.1-176

Cardinal Laboratories

*=Accredited Analyte

PLEASE NOTE: Liability and Damages. Cardinal's liability and client's exclusive remedy for any claim arising, whether based in contract or tort, shall be limited to the amount paid by client for analyses. All claims, including those for negligence and any other cause whatsoever shall be deemed waived unless made in writing and received by Cardinal within thirty (30) days after completion of the applicable service. In no event shall Cardinal be liable for incidental or consequential damages, including, without limitation, business interruptions, loss of use, or loss of profits incurred by client, its subsidiaries, affiliates or successors arising out of or related to the performance of the services hereunder by Cardinal, regardless of whether such claim is based upon any of the above stated reasons or otherwise. Results relate only to the samples identified above. This report shall not be reproduced except in full with written approval of Cardinal Laboratories.



Celey D. Keene, Lab Director/Quality Manager

Analytical Results For:

BBC International, Inc.
Cliff Brunson
P.O. Box 805
Hobbs NM, 88241
Fax To: (575) 397-0397

Received: 08/19/2015
Reported: 08/25/2015
Project Name: NHU SATELLITE #27
Project Number: NONE GIVEN
Project Location: LEA COUNTY, NM

Sampling Date: 08/17/2015
Sampling Type: Soil
Sampling Condition: Cool & Intact
Sample Received By: Judy Garcia

Sample ID: SP8 @ 1' (H502174-25)

BTX 8021B		mg/kg		Analyzed By: CK						
Analyte	Result	Reporting Limit	Analyzed	Method Blank	BS	% Recovery	True Value QC	RPD	Qualifier	
Benzene*	<0.050	0.050	08/21/2015	ND	2.20	110	2.00	2.72		
Toluene*	<0.050	0.050	08/21/2015	ND	2.07	104	2.00	4.13		
Ethylbenzene*	<0.050	0.050	08/21/2015	ND	2.19	110	2.00	4.91		
Total Xylenes*	<0.150	0.150	08/21/2015	ND	6.20	103	6.00	3.62		
Total BTX	<0.300	0.300	08/21/2015	ND						

Surrogate: 4-Bromofluorobenzene (PID) 104 % 85.6-137

Chloride, SM4500CI-B		mg/kg		Analyzed By: AP					
Analyte	Result	Reporting Limit	Analyzed	Method Blank	BS	% Recovery	True Value QC	RPD	Qualifier
Chloride	<16.0	16.0	08/21/2015	ND	400	100	400	3.92	

TPH 8015M		mg/kg		Analyzed By: CK					
Analyte	Result	Reporting Limit	Analyzed	Method Blank	BS	% Recovery	True Value QC	RPD	Qualifier
GRO C6-C10	<10.0	10.0	08/21/2015	ND	181	90.7	200	1.51	
DRO >C10-C28	<10.0	10.0	08/21/2015	ND	187	93.6	200	1.50	

Surrogate: 1-Chlorooctane 90.8 % 47.2-157

Surrogate: 1-Chlorooctadecane 96.6 % 52.1-176

Sample ID: SP8 @ 2' (H502174-26)

Chloride, SM4500Cl-B		mg/kg		Analyzed By: AP					
Analyte	Result	Reporting Limit	Analyzed	Method Blank	BS	% Recovery	True Value QC	RPD	Qualifier
Chloride	<16.0	16.0	08/21/2015	ND	400	100	400	3.92	

Cardinal Laboratories

*=Accredited Analyte

PLEASE NOTE: Liability and Damages. Cardinal's liability and client's exclusive remedy for any claim arising, whether based in contract or tort, shall be limited to the amount paid by client for analyses. All claims, including those for negligence and any other cause whatsoever shall be deemed waived unless made in writing and received by Cardinal within thirty (30) days after completion of the applicable service. In no event shall Cardinal be liable for incidental or consequential damages, including, without limitation, business interruptions, loss of use, or loss of profits incurred by client, its subsidiaries, affiliates or successors arising out of or related to the performance of the services hereunder by Cardinal, regardless of whether such claim is based upon any of the above stated reasons or otherwise. Results relate only to the samples identified above. This report shall not be reproduced except in full with written approval of Cardinal Laboratories.



Celey D. Keene, Lab Director/Quality Manager

Analytical Results For:

BBC International, Inc.
Cliff Brunson
P.O. Box 805
Hobbs NM, 88241
Fax To: (575) 397-0397

Received: 08/19/2015
Reported: 08/25/2015
Project Name: NHU SATELLITE #27
Project Number: NONE GIVEN
Project Location: LEA COUNTY, NM

Sampling Date: 08/17/2015
Sampling Type: Soil
Sampling Condition: Cool & Intact
Sample Received By: Judy Garcia

Sample ID: SP8 @ 3' (H502174-27)

Chloride, SM4500Cl-B		mg/kg		Analyzed By: AP					
Analyte	Result	Reporting Limit	Analyzed	Method Blank	BS	% Recovery	True Value QC	RPD	Qualifier
Chloride	<16.0	16.0	08/21/2015	ND	400	100	400	3.92	

Sample ID: SP9 @ SURFACE (H502174-28)

BTEx 8021B		mg/kg		Analyzed By: CK					
Analyte	Result	Reporting Limit	Analyzed	Method Blank	BS	% Recovery	True Value QC	RPD	Qualifier
Benzene*	<0.050	0.050	08/21/2015	ND	2.20	110	2.00	2.72	
Toluene*	<0.050	0.050	08/21/2015	ND	2.07	104	2.00	4.13	
Ethylbenzene*	<0.050	0.050	08/21/2015	ND	2.19	110	2.00	4.91	
Total Xylenes*	<0.150	0.150	08/21/2015	ND	6.20	103	6.00	3.62	
Total BTEx	<0.300	0.300	08/21/2015	ND					

Surrogate: 4-Bromofluorobenzene (PID) 101 % 85.6-137

Chloride, SM4500Cl-B		mg/kg		Analyzed By: AP					
Analyte	Result	Reporting Limit	Analyzed	Method Blank	BS	% Recovery	True Value QC	RPD	Qualifier
Chloride	<16.0	16.0	08/21/2015	ND	400	100	400	3.92	

TPH 8015M		mg/kg		Analyzed By: CK				S-06	
Analyte	Result	Reporting Limit	Analyzed	Method Blank	BS	% Recovery	True Value QC	RPD	Qualifier
GRO C6-C10	<100	100	08/21/2015	ND	181	90.7	200	1.51	
DRO >C10-C28	10400	100	08/21/2015	ND	187	93.6	200	1.50	

Surrogate: 1-Chlorooctane 88.1 % 47.2-157

Surrogate: 1-Chlorooctadecane 222 % 52.1-176

Cardinal Laboratories

*=Accredited Analyte

PLEASE NOTE: Liability and Damages. Cardinal's liability and client's exclusive remedy for any claim arising, whether based in contract or tort, shall be limited to the amount paid by client for analyses. All claims, including those for negligence and any other cause whatsoever shall be deemed waived unless made in writing and received by Cardinal within thirty (30) days after completion of the applicable service. In no event shall Cardinal be liable for incidental or consequential damages, including, without limitation, business interruptions, loss of use, or loss of profits incurred by client, its subsidiaries, affiliates or successors arising out of or related to the performance of the services hereunder by Cardinal, regardless of whether such claim is based upon any of the above stated reasons or otherwise. Results relate only to the samples identified above. This report shall not be reproduced except in full with written approval of Cardinal Laboratories.



Celey D. Keene, Lab Director/Quality Manager

Analytical Results For:

BBC International, Inc.
Cliff Brunson
P.O. Box 805
Hobbs NM, 88241
Fax To: (575) 397-0397

Received: 08/19/2015
Reported: 08/25/2015
Project Name: NHU SATELLITE #27
Project Number: NONE GIVEN
Project Location: LEA COUNTY, NM

Sampling Date: 08/17/2015
Sampling Type: Soil
Sampling Condition: Cool & Intact
Sample Received By: Judy Garcia

Sample ID: SP9 @ 1' (H502174-29)

BTX 8021B		mg/kg		Analyzed By: CK						
Analyte	Result	Reporting Limit	Analyzed	Method Blank	BS	% Recovery	True Value QC	RPD	Qualifier	
Benzene*	<0.050	0.050	08/21/2015	ND	2.20	110	2.00	2.72		
Toluene*	<0.050	0.050	08/21/2015	ND	2.07	104	2.00	4.13		
Ethylbenzene*	<0.050	0.050	08/21/2015	ND	2.19	110	2.00	4.91		
Total Xylenes*	<0.150	0.150	08/21/2015	ND	6.20	103	6.00	3.62		
Total BTX	<0.300	0.300	08/21/2015	ND						

Surrogate: 4-Bromofluorobenzene (PID) 103 % 85.6-137

Chloride, SM4500CI-B		mg/kg		Analyzed By: AP					
Analyte	Result	Reporting Limit	Analyzed	Method Blank	BS	% Recovery	True Value QC	RPD	Qualifier
Chloride	<16.0	16.0	08/21/2015	ND	400	100	400	3.92	

TPH 8015M		mg/kg		Analyzed By: CK					
Analyte	Result	Reporting Limit	Analyzed	Method Blank	BS	% Recovery	True Value QC	RPD	Qualifier
GRO C6-C10	<10.0	10.0	08/21/2015	ND	181	90.7	200	1.51	
DRO >C10-C28	<10.0	10.0	08/21/2015	ND	187	93.6	200	1.50	

Surrogate: 1-Chlorooctane 95.1 % 47.2-157

Surrogate: 1-Chlorooctadecane 95.1 % 52.1-176

Cardinal Laboratories

*=Accredited Analyte

PLEASE NOTE: Liability and Damages. Cardinal's liability and client's exclusive remedy for any claim arising, whether based in contract or tort, shall be limited to the amount paid by client for analyses. All claims, including those for negligence and any other cause whatsoever shall be deemed waived unless made in writing and received by Cardinal within thirty (30) days after completion of the applicable service. In no event shall Cardinal be liable for incidental or consequential damages, including, without limitation, business interruptions, loss of use, or loss of profits incurred by client, its subsidiaries, affiliates or successors arising out of or related to the performance of the services hereunder by Cardinal, regardless of whether such claim is based upon any of the above stated reasons or otherwise. Results relate only to the samples identified above. This report shall not be reproduced except in full with written approval of Cardinal Laboratories.



Celey D. Keene, Lab Director/Quality Manager

Analytical Results For:

 BBC International, Inc.
 Cliff Brunson
 P.O. Box 805
 Hobbs NM, 88241
 Fax To: (575) 397-0397

 Received: 08/19/2015
 Reported: 08/25/2015
 Project Name: NHU SATELLITE #27
 Project Number: NONE GIVEN
 Project Location: LEA COUNTY, NM

 Sampling Date: 08/17/2015
 Sampling Type: Soil
 Sampling Condition: Cool & Intact
 Sample Received By: Judy Garcia

Sample ID: SP10 @ SURFACE (H502174-30)

BTEx 8021B		mg/kg		Analyzed By: CK						
Analyte	Result	Reporting Limit	Analyzed	Method Blank	BS	% Recovery	True Value QC	RPD	Qualifier	
Benzene*	<0.050	0.050	08/21/2015	ND	2.20	110	2.00	2.72		
Toluene*	<0.050	0.050	08/21/2015	ND	2.07	104	2.00	4.13		
Ethylbenzene*	<0.050	0.050	08/21/2015	ND	2.19	110	2.00	4.91		
Total Xylenes*	<0.150	0.150	08/21/2015	ND	6.20	103	6.00	3.62		
Total BTEx	<0.300	0.300	08/21/2015	ND						

Surrogate: 4-Bromofluorobenzene (PID) 101 % 85.6-137

Chloride, SM4500Cl-B		mg/kg		Analyzed By: AP						
Analyte	Result	Reporting Limit	Analyzed	Method Blank	BS	% Recovery	True Value QC	RPD	Qualifier	
Chloride	<16.0	16.0	08/21/2015	ND	400	100	400	3.92		

TPH 8015M		mg/kg		Analyzed By: CK					
Analyte	Result	Reporting Limit	Analyzed	Method Blank	BS	% Recovery	True Value QC	RPD	Qualifier
GRO C6-C10	<50.0	50.0	08/21/2015	ND	181	90.7	200	1.51	
DRO >C10-C28	1440	50.0	08/21/2015	ND	187	93.6	200	1.50	

Surrogate: 1-Chlorooctane 101 % 47.2-157

Surrogate: 1-Chlorooctadecane 149 % 52.1-176

Cardinal Laboratories

*=Accredited Analyte

PLEASE NOTE: Liability and Damages. Cardinal's liability and client's exclusive remedy for any claim arising, whether based in contract or tort, shall be limited to the amount paid by client for analyses. All claims, including those for negligence and any other cause whatsoever shall be deemed waived unless made in writing and received by Cardinal within thirty (30) days after completion of the applicable service. In no event shall Cardinal be liable for incidental or consequential damages, including, without limitation, business interruptions, loss of use, or loss of profits incurred by client, its subsidiaries, affiliates or successors arising out of or related to the performance of the services hereunder by Cardinal, regardless of whether such claim is based upon any of the above stated reasons or otherwise. Results relate only to the samples identified above. This report shall not be reproduced except in full with written approval of Cardinal Laboratories.



Celey D. Keene, Lab Director/Quality Manager

Analytical Results For:

BBC International, Inc.
Cliff Brunson
P.O. Box 805
Hobbs NM, 88241
Fax To: (575) 397-0397

Received: 08/19/2015
Reported: 08/25/2015
Project Name: NHU SATELLITE #27
Project Number: NONE GIVEN
Project Location: LEA COUNTY, NM

Sampling Date: 08/17/2015
Sampling Type: Soil
Sampling Condition: Cool & Intact
Sample Received By: Judy Garcia

Sample ID: SP10 @ 1' (H502174-31)

BTEx 8021B		mg/kg		Analyzed By: CK					
Analyte	Result	Reporting Limit	Analyzed	Method Blank	BS	% Recovery	True Value QC	RPD	Qualifier
Benzene*	<0.050	0.050	08/21/2015	ND	2.20	110	2.00	2.72	
Toluene*	<0.050	0.050	08/21/2015	ND	2.07	104	2.00	4.13	
Ethylbenzene*	<0.050	0.050	08/21/2015	ND	2.19	110	2.00	4.91	
Total Xylenes*	<0.150	0.150	08/21/2015	ND	6.20	103	6.00	3.62	
Total BTEX	<0.300	0.300	08/21/2015	ND					

Surrogate: 4-Bromofluorobenzene (PID) 103 % 85.6-137

Chloride, SM4500Cl-B		mg/kg		Analyzed By: AP					
Analyte	Result	Reporting Limit	Analyzed	Method Blank	BS	% Recovery	True Value QC	RPD	Qualifier
Chloride	<16.0	16.0	08/21/2015	ND	400	100	400	3.92	

TPH 8015M		mg/kg		Analyzed By: CK					
Analyte	Result	Reporting Limit	Analyzed	Method Blank	BS	% Recovery	True Value QC	RPD	Qualifier
GRO C6-C10	<10.0	10.0	08/21/2015	ND	194	97.0	200	0.835	
DRO >C10-C28	<10.0	10.0	08/21/2015	ND	197	98.3	200	4.07	

Surrogate: 1-Chlorooctane 83.8 % 47.2-157

Surrogate: 1-Chlorooctadecane 84.2 % 52.1-176

Cardinal Laboratories

*=Accredited Analyte

PLEASE NOTE: Liability and Damages. Cardinal's liability and client's exclusive remedy for any claim arising, whether based in contract or tort, shall be limited to the amount paid by client for analyses. All claims, including those for negligence and any other cause whatsoever shall be deemed waived unless made in writing and received by Cardinal within thirty (30) days after completion of the applicable service. In no event shall Cardinal be liable for incidental or consequential damages, including, without limitation, business interruptions, loss of use, or loss of profits incurred by client, its subsidiaries, affiliates or successors arising out of or related to the performance of the services hereunder by Cardinal, regardless of whether such claim is based upon any of the above stated reasons or otherwise. Results relate only to the samples identified above. This report shall not be reproduced except in full with written approval of Cardinal Laboratories.



Celey D. Keene, Lab Director/Quality Manager

Analytical Results For:

BBC International, Inc.
Cliff Brunson
P.O. Box 805
Hobbs NM, 88241
Fax To: (575) 397-0397

Received: 08/19/2015
Reported: 08/25/2015
Project Name: NHU SATELLITE #27
Project Number: NONE GIVEN
Project Location: LEA COUNTY, NM

Sampling Date: 08/17/2015
Sampling Type: Soil
Sampling Condition: Cool & Intact
Sample Received By: Judy Garcia

Sample ID: SP11 @ SURFACE (H502174-32)

BTEx 8021B		mg/kg		Analyzed By: CK						
Analyte	Result	Reporting Limit	Analyzed	Method Blank	BS	% Recovery	True Value QC	RPD	Qualifier	
Benzene*	<0.050	0.050	08/21/2015	ND	2.08	104	2.00	2.74		
Toluene*	<0.050	0.050	08/21/2015	ND	1.96	97.9	2.00	3.52		
Ethylbenzene*	<0.050	0.050	08/21/2015	ND	2.11	106	2.00	3.69		
Total Xylenes*	<0.150	0.150	08/21/2015	ND	5.89	98.2	6.00	3.84		
Total BTEx	<0.300	0.300	08/21/2015	ND						

Surrogate: 4-Bromofluorobenzene (PID) 101 % 85.6-137

Chloride, SM4500CI-B		mg/kg		Analyzed By: AP					
Analyte	Result	Reporting Limit	Analyzed	Method Blank	BS	% Recovery	True Value QC	RPD	Qualifier
Chloride	288	16.0	08/21/2015	ND	400	100	400	3.92	

TPH 8015M		mg/kg		Analyzed By: CK					
Analyte	Result	Reporting Limit	Analyzed	Method Blank	BS	% Recovery	True Value QC	RPD	Qualifier
GRO C6-C10	<50.0	50.0	08/21/2015	ND	194	97.0	200	0.835	
DRO >C10-C28	1680	50.0	08/21/2015	ND	197	98.3	200	4.07	

Surrogate: 1-Chlorooctane 74.0 % 47.2-157

Surrogate: 1-Chlorooctadecane 114 % 52.1-176

Cardinal Laboratories

*=Accredited Analyte

PLEASE NOTE: Liability and Damages. Cardinal's liability and client's exclusive remedy for any claim arising, whether based in contract or tort, shall be limited to the amount paid by client for analyses. All claims, including those for negligence and any other cause whatsoever shall be deemed waived unless made in writing and received by Cardinal within thirty (30) days after completion of the applicable service. In no event shall Cardinal be liable for incidental or consequential damages, including, without limitation, business interruptions, loss of use, or loss of profits incurred by client, its subsidiaries, affiliates or successors arising out of or related to the performance of the services hereunder by Cardinal, regardless of whether such claim is based upon any of the above stated reasons or otherwise. Results relate only to the samples identified above. This report shall not be reproduced except in full with written approval of Cardinal Laboratories.



Celey D. Keene, Lab Director/Quality Manager

Analytical Results For:

BBC International, Inc.
Cliff Brunson
P.O. Box 805
Hobbs NM, 88241
Fax To: (575) 397-0397

Received: 08/19/2015
Reported: 08/25/2015
Project Name: NHU SATELLITE #27
Project Number: NONE GIVEN
Project Location: LEA COUNTY, NM

Sampling Date: 08/17/2015
Sampling Type: Soil
Sampling Condition: Cool & Intact
Sample Received By: Judy Garcia

Sample ID: SP11 @ 1' (H502174-33)

BTX 8021B		mg/kg		Analyzed By: CK					
Analyte	Result	Reporting Limit	Analyzed	Method Blank	BS	% Recovery	True Value QC	RPD	Qualifier
Benzene*	<0.050	0.050	08/21/2015	ND	2.08	104	2.00	2.74	
Toluene*	<0.050	0.050	08/21/2015	ND	1.96	97.9	2.00	3.52	
Ethylbenzene*	<0.050	0.050	08/21/2015	ND	2.11	106	2.00	3.69	
Total Xylenes*	<0.150	0.150	08/21/2015	ND	5.89	98.2	6.00	3.84	
Total BTX	<0.300	0.300	08/21/2015	ND					

Surrogate: 4-Bromofluorobenzene (PID) 102 % 85.6-137

Chloride, SM4500Cl-B		mg/kg		Analyzed By: AP					
Analyte	Result	Reporting Limit	Analyzed	Method Blank	BS	% Recovery	True Value QC	RPD	Qualifier
Chloride	112	16.0	08/21/2015	ND	400	100	400	3.92	

TPH 8015M		mg/kg		Analyzed By: CK					
Analyte	Result	Reporting Limit	Analyzed	Method Blank	BS	% Recovery	True Value QC	RPD	Qualifier
GRO C6-C10	<10.0	10.0	08/21/2015	ND	194	97.0	200	0.835	
DRO >C10-C28	<10.0	10.0	08/21/2015	ND	197	98.3	200	4.07	

Surrogate: 1-Chlorooctane 85.3 % 47.2-157

Surrogate: 1-Chlorooctadecane 79.2 % 52.1-176

Cardinal Laboratories

*=Accredited Analyte

PLEASE NOTE: Liability and Damages. Cardinal's liability and client's exclusive remedy for any claim arising, whether based in contract or tort, shall be limited to the amount paid by client for analyses. All claims, including those for negligence and any other cause whatsoever shall be deemed waived unless made in writing and received by Cardinal within thirty (30) days after completion of the applicable service. In no event shall Cardinal be liable for incidental or consequential damages, including, without limitation, business interruptions, loss of use, or loss of profits incurred by client, its subsidiaries, affiliates or successors arising out of or related to the performance of the services hereunder by Cardinal, regardless of whether such claim is based upon any of the above stated reasons or otherwise. Results relate only to the samples identified above. This report shall not be reproduced except in full with written approval of Cardinal Laboratories.



Celey D. Keene, Lab Director/Quality Manager

Analytical Results For:

BBC International, Inc.
Cliff Brunson
P.O. Box 805
Hobbs NM, 88241
Fax To: (575) 397-0397

Received: 08/19/2015
Reported: 08/25/2015
Project Name: NHU SATELLITE #27
Project Number: NONE GIVEN
Project Location: LEA COUNTY, NM

Sampling Date: 08/17/2015
Sampling Type: Soil
Sampling Condition: Cool & Intact
Sample Received By: Judy Garcia

Sample ID: SP12 @ SURFACE (H502174-34)

BTEx 8021B		mg/kg		Analyzed By: CK						
Analyte	Result	Reporting Limit	Analyzed	Method Blank	BS	% Recovery	True Value QC	RPD	Qualifier	
Benzene*	<0.050	0.050	08/21/2015	ND	2.08	104	2.00	2.74		
Toluene*	<0.050	0.050	08/21/2015	ND	1.96	97.9	2.00	3.52		
Ethylbenzene*	<0.050	0.050	08/21/2015	ND	2.11	106	2.00	3.69		
Total Xylenes*	<0.150	0.150	08/21/2015	ND	5.89	98.2	6.00	3.84		
Total BTEx	<0.300	0.300	08/21/2015	ND						

Surrogate: 4-Bromofluorobenzene (PID) 102 % 85.6-137

Chloride, SM4500CI-B		mg/kg		Analyzed By: AP						
Analyte	Result	Reporting Limit	Analyzed	Method Blank	BS	% Recovery	True Value QC	RPD	Qualifier	
Chloride	<16.0	16.0	08/21/2015	ND	400	100	400	3.92		

TPH 8015M		mg/kg		Analyzed By: CK					S-06	
Analyte	Result	Reporting Limit	Analyzed	Method Blank	BS	% Recovery	True Value QC	RPD	Qualifier	
GRO C6-C10	<100	100	08/21/2015	ND	194	97.0	200	0.835		
DRO >C10-C28	7700	100	08/21/2015	ND	197	98.3	200	4.07		

Surrogate: 1-Chlorooctane 93.4 % 47.2-157

Surrogate: 1-Chlorooctadecane 207 % 52.1-176

Cardinal Laboratories

*=Accredited Analyte

PLEASE NOTE: Liability and Damages. Cardinal's liability and client's exclusive remedy for any claim arising, whether based in contract or tort, shall be limited to the amount paid by client for analyses. All claims, including those for negligence and any other cause whatsoever shall be deemed waived unless made in writing and received by Cardinal within thirty (30) days after completion of the applicable service. In no event shall Cardinal be liable for incidental or consequential damages, including, without limitation, business interruptions, loss of use, or loss of profits incurred by client, its subsidiaries, affiliates or successors arising out of or related to the performance of the services hereunder by Cardinal, regardless of whether such claim is based upon any of the above stated reasons or otherwise. Results relate only to the samples identified above. This report shall not be reproduced except in full with written approval of Cardinal Laboratories.



Celey D. Keene, Lab Director/Quality Manager

Analytical Results For:

BBC International, Inc.
Cliff Brunson
P.O. Box 805
Hobbs NM, 88241
Fax To: (575) 397-0397

Received: 08/19/2015
Reported: 08/25/2015
Project Name: NHU SATELLITE #27
Project Number: NONE GIVEN
Project Location: LEA COUNTY, NM

Sampling Date: 08/17/2015
Sampling Type: Soil
Sampling Condition: Cool & Intact
Sample Received By: Judy Garcia

Sample ID: SP12 @ 1' (H502174-35)

BTEx 8021B		mg/kg		Analyzed By: CK						
Analyte	Result	Reporting Limit	Analyzed	Method Blank	BS	% Recovery	True Value QC	RPD	Qualifier	
Benzene*	<0.050	0.050	08/21/2015	ND	2.08	104	2.00	2.74		
Toluene*	<0.050	0.050	08/21/2015	ND	1.96	97.9	2.00	3.52		
Ethylbenzene*	<0.050	0.050	08/21/2015	ND	2.11	106	2.00	3.69		
Total Xylenes*	<0.150	0.150	08/21/2015	ND	5.89	98.2	6.00	3.84		
Total BTEx	<0.300	0.300	08/21/2015	ND						

Surrogate: 4-Bromofluorobenzene (PID) 101 % 85.6-137

Chloride, SM4500CI-B		mg/kg		Analyzed By: AP					
Analyte	Result	Reporting Limit	Analyzed	Method Blank	BS	% Recovery	True Value QC	RPD	Qualifier
Chloride	48.0	16.0	08/21/2015	ND	400	100	400	3.92	

TPH 8015M		mg/kg		Analyzed By: CK					
Analyte	Result	Reporting Limit	Analyzed	Method Blank	BS	% Recovery	True Value QC	RPD	Qualifier
GRO C6-C10	<10.0	10.0	08/21/2015	ND	194	97.0	200	0.835	
DRO >C10-C28	<10.0	10.0	08/21/2015	ND	197	98.3	200	4.07	

Surrogate: 1-Chlorooctane 88.8 % 47.2-157

Surrogate: 1-Chlorooctadecane 82.7 % 52.1-176

Cardinal Laboratories

*=Accredited Analyte

PLEASE NOTE: Liability and Damages. Cardinal's liability and client's exclusive remedy for any claim arising, whether based in contract or tort, shall be limited to the amount paid by client for analyses. All claims, including those for negligence and any other cause whatsoever shall be deemed waived unless made in writing and received by Cardinal within thirty (30) days after completion of the applicable service. In no event shall Cardinal be liable for incidental or consequential damages, including, without limitation, business interruptions, loss of use, or loss of profits incurred by client, its subsidiaries, affiliates or successors arising out of or related to the performance of the services hereunder by Cardinal, regardless of whether such claim is based upon any of the above stated reasons or otherwise. Results relate only to the samples identified above. This report shall not be reproduced except in full with written approval of Cardinal Laboratories.



Celey D. Keene, Lab Director/Quality Manager

Analytical Results For:

BBC International, Inc.
Cliff Brunson
P.O. Box 805
Hobbs NM, 88241
Fax To: (575) 397-0397

Received: 08/19/2015
Reported: 08/25/2015
Project Name: NHU SATELLITE #27
Project Number: NONE GIVEN
Project Location: LEA COUNTY, NM

Sampling Date: 08/17/2015
Sampling Type: Soil
Sampling Condition: Cool & Intact
Sample Received By: Judy Garcia

Sample ID: SP13 @ SURFACE (H502174-36)

BTEx 8021B		mg/kg		Analyzed By: CK						
Analyte	Result	Reporting Limit	Analyzed	Method Blank	BS	% Recovery	True Value QC	RPD	Qualifier	
Benzene*	<0.050	0.050	08/21/2015	ND	2.08	104	2.00	2.74		
Toluene*	<0.050	0.050	08/21/2015	ND	1.96	97.9	2.00	3.52		
Ethylbenzene*	<0.050	0.050	08/21/2015	ND	2.11	106	2.00	3.69		
Total Xylenes*	<0.150	0.150	08/21/2015	ND	5.89	98.2	6.00	3.84		
Total BTEx	<0.300	0.300	08/21/2015	ND						

Surrogate: 4-Bromofluorobenzene (PID) 101 % 85.6-137

Chloride, SM4500CI-B		mg/kg		Analyzed By: AP						
Analyte	Result	Reporting Limit	Analyzed	Method Blank	BS	% Recovery	True Value QC	RPD	Qualifier	
Chloride	<16.0	16.0	08/21/2015	ND	400	100	400	3.92		

TPH 8015M		mg/kg		Analyzed By: CK				S-06	
Analyte	Result	Reporting Limit	Analyzed	Method Blank	BS	% Recovery	True Value QC	RPD	Qualifier
GRO C6-C10	<50.0	50.0	08/21/2015	ND	194	97.0	200	0.835	
DRO >C10-C28	967	50.0	08/21/2015	ND	197	98.3	200	4.07	

Surrogate: 1-Chlorooctane 44.3 % 47.2-157

Surrogate: 1-Chlorooctadecane 61.6 % 52.1-176

Cardinal Laboratories

*=Accredited Analyte

PLEASE NOTE: Liability and Damages. Cardinal's liability and client's exclusive remedy for any claim arising, whether based in contract or tort, shall be limited to the amount paid by client for analyses. All claims, including those for negligence and any other cause whatsoever shall be deemed waived unless made in writing and received by Cardinal within thirty (30) days after completion of the applicable service. In no event shall Cardinal be liable for incidental or consequential damages, including, without limitation, business interruptions, loss of use, or loss of profits incurred by client, its subsidiaries, affiliates or successors arising out of or related to the performance of the services hereunder by Cardinal, regardless of whether such claim is based upon any of the above stated reasons or otherwise. Results relate only to the samples identified above. This report shall not be reproduced except in full with written approval of Cardinal Laboratories.



Celey D. Keene, Lab Director/Quality Manager

Analytical Results For:

BBC International, Inc.
Cliff Brunson
P.O. Box 805
Hobbs NM, 88241
Fax To: (575) 397-0397

Received: 08/19/2015
Reported: 08/25/2015
Project Name: NHU SATELLITE #27
Project Number: NONE GIVEN
Project Location: LEA COUNTY, NM

Sampling Date: 08/17/2015
Sampling Type: Soil
Sampling Condition: Cool & Intact
Sample Received By: Judy Garcia

Sample ID: SP13 @ 1' (H502174-37)

BTEx 8021B		mg/kg		Analyzed By: CK					
Analyte	Result	Reporting Limit	Analyzed	Method Blank	BS	% Recovery	True Value QC	RPD	Qualifier
Benzene*	<0.050	0.050	08/21/2015	ND	2.08	104	2.00	2.74	
Toluene*	<0.050	0.050	08/21/2015	ND	1.96	97.9	2.00	3.52	
Ethylbenzene*	<0.050	0.050	08/21/2015	ND	2.11	106	2.00	3.69	
Total Xylenes*	<0.150	0.150	08/21/2015	ND	5.89	98.2	6.00	3.84	
Total BTEx	<0.300	0.300	08/21/2015	ND					

Surrogate: 4-Bromofluorobenzene (PID) 101 % 85.6-137

Chloride, SM4500CI-B		mg/kg		Analyzed By: AP					
Analyte	Result	Reporting Limit	Analyzed	Method Blank	BS	% Recovery	True Value QC	RPD	Qualifier
Chloride	48.0	16.0	08/21/2015	ND	400	100	400	3.92	

TPH 8015M		mg/kg		Analyzed By: CK					
Analyte	Result	Reporting Limit	Analyzed	Method Blank	BS	% Recovery	True Value QC	RPD	Qualifier
GRO C6-C10	<10.0	10.0	08/21/2015	ND	194	97.0	200	0.835	
DRO >C10-C28	<10.0	10.0	08/21/2015	ND	197	98.3	200	4.07	

Surrogate: 1-Chlorooctane 89.1 % 47.2-157

Surrogate: 1-Chlorooctadecane 94.5 % 52.1-176

Cardinal Laboratories

*=Accredited Analyte

PLEASE NOTE: Liability and Damages. Cardinal's liability and client's exclusive remedy for any claim arising, whether based in contract or tort, shall be limited to the amount paid by client for analyses. All claims, including those for negligence and any other cause whatsoever shall be deemed waived unless made in writing and received by Cardinal within thirty (30) days after completion of the applicable service. In no event shall Cardinal be liable for incidental or consequential damages, including, without limitation, business interruptions, loss of use, or loss of profits incurred by client, its subsidiaries, affiliates or successors arising out of or related to the performance of the services hereunder by Cardinal, regardless of whether such claim is based upon any of the above stated reasons or otherwise. Results relate only to the samples identified above. This report shall not be reproduced except in full with written approval of Cardinal Laboratories.



Celey D. Keene, Lab Director/Quality Manager

Analytical Results For:

BBC International, Inc.
Cliff Brunson
P.O. Box 805
Hobbs NM, 88241
Fax To: (575) 397-0397

Received: 08/19/2015
Reported: 08/25/2015
Project Name: NHU SATELLITE #27
Project Number: NONE GIVEN
Project Location: LEA COUNTY, NM

Sampling Date: 08/17/2015
Sampling Type: Soil
Sampling Condition: Cool & Intact
Sample Received By: Judy Garcia

Sample ID: SP14 @ SURFACE (H502174-38)

BTEx 8021B		mg/kg		Analyzed By: CK					
Analyte	Result	Reporting Limit	Analyzed	Method Blank	BS	% Recovery	True Value QC	RPD	Qualifier
Benzene*	<0.050	0.050	08/22/2015	ND	2.08	104	2.00	2.74	
Toluene*	<0.050	0.050	08/22/2015	ND	1.96	97.9	2.00	3.52	
Ethylbenzene*	<0.050	0.050	08/22/2015	ND	2.11	106	2.00	3.69	
Total Xylenes*	<0.150	0.150	08/22/2015	ND	5.89	98.2	6.00	3.84	
Total BTEx	<0.300	0.300	08/22/2015	ND					

Surrogate: 4-Bromofluorobenzene (PID) 101 % 85.6-137

Chloride, SM4500CI-B		mg/kg		Analyzed By: AP					
Analyte	Result	Reporting Limit	Analyzed	Method Blank	BS	% Recovery	True Value QC	RPD	Qualifier
Chloride	32.0	16.0	08/21/2015	ND	416	104	400	0.00	

TPH 8015M		mg/kg		Analyzed By: CK				S-06	
Analyte	Result	Reporting Limit	Analyzed	Method Blank	BS	% Recovery	True Value QC	RPD	Qualifier
GRO C6-C10	<100	100	08/21/2015	ND	194	97.0	200	0.835	
DRO >C10-C28	6840	100	08/21/2015	ND	197	98.3	200	4.07	

Surrogate: 1-Chlorooctane 80.2 % 47.2-157

Surrogate: 1-Chlorooctadecane 192 % 52.1-176

Cardinal Laboratories

*=Accredited Analyte

PLEASE NOTE: Liability and Damages. Cardinal's liability and client's exclusive remedy for any claim arising, whether based in contract or tort, shall be limited to the amount paid by client for analyses. All claims, including those for negligence and any other cause whatsoever shall be deemed waived unless made in writing and received by Cardinal within thirty (30) days after completion of the applicable service. In no event shall Cardinal be liable for incidental or consequential damages, including, without limitation, business interruptions, loss of use, or loss of profits incurred by client, its subsidiaries, affiliates or successors arising out of or related to the performance of the services hereunder by Cardinal, regardless of whether such claim is based upon any of the above stated reasons or otherwise. Results relate only to the samples identified above. This report shall not be reproduced except in full with written approval of Cardinal Laboratories.



Celey D. Keene, Lab Director/Quality Manager

Analytical Results For:

 BBC International, Inc.
 Cliff Brunson
 P.O. Box 805
 Hobbs NM, 88241
 Fax To: (575) 397-0397

 Received: 08/19/2015
 Reported: 08/25/2015
 Project Name: NHU SATELLITE #27
 Project Number: NONE GIVEN
 Project Location: LEA COUNTY, NM

 Sampling Date: 08/18/2015
 Sampling Type: Soil
 Sampling Condition: Cool & Intact
 Sample Received By: Judy Garcia

Sample ID: SP14 @ 1' (H502174-39)

BTEx 8021B		mg/kg		Analyzed By: CK						
Analyte	Result	Reporting Limit	Analyzed	Method Blank	BS	% Recovery	True Value QC	RPD	Qualifier	
Benzene*	<0.050	0.050	08/22/2015	ND	2.08	104	2.00	2.74		
Toluene*	<0.050	0.050	08/22/2015	ND	1.96	97.9	2.00	3.52		
Ethylbenzene*	<0.050	0.050	08/22/2015	ND	2.11	106	2.00	3.69		
Total Xylenes*	<0.150	0.150	08/22/2015	ND	5.89	98.2	6.00	3.84		
Total BTEx	<0.300	0.300	08/22/2015	ND						

Surrogate: 4-Bromofluorobenzene (PID) 102 % 85.6-137

Chloride, SM4500CI-B		mg/kg		Analyzed By: AP						
Analyte	Result	Reporting Limit	Analyzed	Method Blank	BS	% Recovery	True Value QC	RPD	Qualifier	
Chloride	<16.0	16.0	08/21/2015	ND	416	104	400	0.00		

TPH 8015M		mg/kg		Analyzed By: CK					
Analyte	Result	Reporting Limit	Analyzed	Method Blank	BS	% Recovery	True Value QC	RPD	Qualifier
GRO C6-C10	<10.0	10.0	08/21/2015	ND	194	97.0	200	0.835	
DRO >C10-C28	<10.0	10.0	08/21/2015	ND	197	98.3	200	4.07	

Surrogate: 1-Chlorooctane 84.9 % 47.2-157

Surrogate: 1-Chlorooctadecane 85.9 % 52.1-176

Cardinal Laboratories

*=Accredited Analyte

PLEASE NOTE: Liability and Damages. Cardinal's liability and client's exclusive remedy for any claim arising, whether based in contract or tort, shall be limited to the amount paid by client for analyses. All claims, including those for negligence and any other cause whatsoever shall be deemed waived unless made in writing and received by Cardinal within thirty (30) days after completion of the applicable service. In no event shall Cardinal be liable for incidental or consequential damages, including, without limitation, business interruptions, loss of use, or loss of profits incurred by client, its subsidiaries, affiliates or successors arising out of or related to the performance of the services hereunder by Cardinal, regardless of whether such claim is based upon any of the above stated reasons or otherwise. Results relate only to the samples identified above. This report shall not be reproduced except in full with written approval of Cardinal Laboratories.



Celey D. Keene, Lab Director/Quality Manager

Analytical Results For:

BBC International, Inc.
Cliff Brunson
P.O. Box 805
Hobbs NM, 88241
Fax To: (575) 397-0397

Received: 08/19/2015
Reported: 08/25/2015
Project Name: NHU SATELLITE #27
Project Number: NONE GIVEN
Project Location: LEA COUNTY, NM

Sampling Date: 08/18/2015
Sampling Type: Soil
Sampling Condition: Cool & Intact
Sample Received By: Judy Garcia

Sample ID: SP15 @ SURFACE (H502174-40)

BTEx 8021B		mg/kg		Analyzed By: CK						
Analyte	Result	Reporting Limit	Analyzed	Method Blank	BS	% Recovery	True Value QC	RPD	Qualifier	
Benzene*	<0.050	0.050	08/22/2015	ND	2.08	104	2.00	2.74		
Toluene*	<0.050	0.050	08/22/2015	ND	1.96	97.9	2.00	3.52		
Ethylbenzene*	<0.050	0.050	08/22/2015	ND	2.11	106	2.00	3.69		
Total Xylenes*	<0.150	0.150	08/22/2015	ND	5.89	98.2	6.00	3.84		
Total BTEx	<0.300	0.300	08/22/2015	ND						

Surrogate: 4-Bromofluorobenzene (PID) 100 % 85.6-137

Chloride, SM4500CI-B		mg/kg		Analyzed By: AP						
Analyte	Result	Reporting Limit	Analyzed	Method Blank	BS	% Recovery	True Value QC	RPD	Qualifier	
Chloride	<16.0	16.0	08/21/2015	ND	416	104	400	0.00		

TPH 8015M		mg/kg		Analyzed By: CK				S-06	
Analyte	Result	Reporting Limit	Analyzed	Method Blank	BS	% Recovery	True Value QC	RPD	Qualifier
GRO C6-C10	<100	100	08/21/2015	ND	194	97.0	200	0.835	
DRO >C10-C28	16600	100	08/21/2015	ND	197	98.3	200	4.07	

Surrogate: 1-Chlorooctane 79.7 % 47.2-157

Surrogate: 1-Chlorooctadecane 339 % 52.1-176

Cardinal Laboratories

*=Accredited Analyte

PLEASE NOTE: Liability and Damages. Cardinal's liability and client's exclusive remedy for any claim arising, whether based in contract or tort, shall be limited to the amount paid by client for analyses. All claims, including those for negligence and any other cause whatsoever shall be deemed waived unless made in writing and received by Cardinal within thirty (30) days after completion of the applicable service. In no event shall Cardinal be liable for incidental or consequential damages, including, without limitation, business interruptions, loss of use, or loss of profits incurred by client, its subsidiaries, affiliates or successors arising out of or related to the performance of the services hereunder by Cardinal, regardless of whether such claim is based upon any of the above stated reasons or otherwise. Results relate only to the samples identified above. This report shall not be reproduced except in full with written approval of Cardinal Laboratories.



Celey D. Keene, Lab Director/Quality Manager

Analytical Results For:

BBC International, Inc.
Cliff Brunson
P.O. Box 805
Hobbs NM, 88241
Fax To: (575) 397-0397

Received: 08/19/2015
Reported: 08/25/2015
Project Name: NHU SATELLITE #27
Project Number: NONE GIVEN
Project Location: LEA COUNTY, NM

Sampling Date: 08/18/2015
Sampling Type: Soil
Sampling Condition: Cool & Intact
Sample Received By: Judy Garcia

Sample ID: SP15 @ 1' (H502174-41)

BTEx 8021B		mg/kg		Analyzed By: CK						
Analyte	Result	Reporting Limit	Analyzed	Method Blank	BS	% Recovery	True Value QC	RPD	Qualifier	
Benzene*	<0.050	0.050	08/22/2015	ND	2.08	104	2.00	2.74		
Toluene*	<0.050	0.050	08/22/2015	ND	1.96	97.9	2.00	3.52		
Ethylbenzene*	<0.050	0.050	08/22/2015	ND	2.11	106	2.00	3.69		
Total Xylenes*	<0.150	0.150	08/22/2015	ND	5.89	98.2	6.00	3.84		
Total BTEx	<0.300	0.300	08/22/2015	ND						

Surrogate: 4-Bromofluorobenzene (PID) 103 % 85.6-137

Chloride, SM4500CI-B		mg/kg		Analyzed By: AP						
Analyte	Result	Reporting Limit	Analyzed	Method Blank	BS	% Recovery	True Value QC	RPD	Qualifier	
Chloride	<16.0	16.0	08/21/2015	ND	416	104	400	0.00		

TPH 8015M		mg/kg		Analyzed By: CK					
Analyte	Result	Reporting Limit	Analyzed	Method Blank	BS	% Recovery	True Value QC	RPD	Qualifier
GRO C6-C10	<10.0	10.0	08/21/2015	ND	194	97.0	200	0.835	
DRO >C10-C28	<10.0	10.0	08/21/2015	ND	197	98.3	200	4.07	

Surrogate: 1-Chlorooctane 86.3 % 47.2-157

Surrogate: 1-Chlorooctadecane 85.2 % 52.1-176

Cardinal Laboratories

*=Accredited Analyte

PLEASE NOTE: Liability and Damages. Cardinal's liability and client's exclusive remedy for any claim arising, whether based in contract or tort, shall be limited to the amount paid by client for analyses. All claims, including those for negligence and any other cause whatsoever shall be deemed waived unless made in writing and received by Cardinal within thirty (30) days after completion of the applicable service. In no event shall Cardinal be liable for incidental or consequential damages, including, without limitation, business interruptions, loss of use, or loss of profits incurred by client, its subsidiaries, affiliates or successors arising out of or related to the performance of the services hereunder by Cardinal, regardless of whether such claim is based upon any of the above stated reasons or otherwise. Results relate only to the samples identified above. This report shall not be reproduced except in full with written approval of Cardinal Laboratories.



Celey D. Keene, Lab Director/Quality Manager

Analytical Results For:

BBC International, Inc.
Cliff Brunson
P.O. Box 805
Hobbs NM, 88241
Fax To: (575) 397-0397

Received: 08/19/2015
Reported: 08/25/2015
Project Name: NHU SATELLITE #27
Project Number: NONE GIVEN
Project Location: LEA COUNTY, NM

Sampling Date: 08/18/2015
Sampling Type: Soil
Sampling Condition: Cool & Intact
Sample Received By: Judy Garcia

Sample ID: SP16 @ SURFACE (H502174-42)

BTEx 8021B		mg/kg		Analyzed By: CK						
Analyte	Result	Reporting Limit	Analyzed	Method Blank	BS	% Recovery	True Value QC	RPD	Qualifier	
Benzene*	<0.050	0.050	08/22/2015	ND	2.08	104	2.00	2.74		
Toluene*	<0.050	0.050	08/22/2015	ND	1.96	97.9	2.00	3.52		
Ethylbenzene*	<0.050	0.050	08/22/2015	ND	2.11	106	2.00	3.69		
Total Xylenes*	<0.150	0.150	08/22/2015	ND	5.89	98.2	6.00	3.84		
Total BTEx	<0.300	0.300	08/22/2015	ND						

Surrogate: 4-Bromofluorobenzene (PID) 101 % 85.6-137

Chloride, SM4500CI-B		mg/kg		Analyzed By: AP					
Analyte	Result	Reporting Limit	Analyzed	Method Blank	BS	% Recovery	True Value QC	RPD	Qualifier
Chloride	<16.0	16.0	08/21/2015	ND	416	104	400	0.00	

TPH 8015M		mg/kg		Analyzed By: CK					
Analyte	Result	Reporting Limit	Analyzed	Method Blank	BS	% Recovery	True Value QC	RPD	Qualifier
GRO C6-C10	<100	100	08/21/2015	ND	194	97.0	200	0.835	
DRO >C10-C28	4950	100	08/21/2015	ND	197	98.3	200	4.07	

Surrogate: 1-Chlorooctane 61.5 % 47.2-157

Surrogate: 1-Chlorooctadecane 169 % 52.1-176

Cardinal Laboratories

*=Accredited Analyte

PLEASE NOTE: Liability and Damages. Cardinal's liability and client's exclusive remedy for any claim arising, whether based in contract or tort, shall be limited to the amount paid by client for analyses. All claims, including those for negligence and any other cause whatsoever shall be deemed waived unless made in writing and received by Cardinal within thirty (30) days after completion of the applicable service. In no event shall Cardinal be liable for incidental or consequential damages, including, without limitation, business interruptions, loss of use, or loss of profits incurred by client, its subsidiaries, affiliates or successors arising out of or related to the performance of the services hereunder by Cardinal, regardless of whether such claim is based upon any of the above stated reasons or otherwise. Results relate only to the samples identified above. This report shall not be reproduced except in full with written approval of Cardinal Laboratories.



Celey D. Keene, Lab Director/Quality Manager

Analytical Results For:

BBC International, Inc.
Cliff Brunson
P.O. Box 805
Hobbs NM, 88241
Fax To: (575) 397-0397

Received: 08/19/2015
Reported: 08/25/2015
Project Name: NHU SATELLITE #27
Project Number: NONE GIVEN
Project Location: LEA COUNTY, NM

Sampling Date: 08/18/2015
Sampling Type: Soil
Sampling Condition: Cool & Intact
Sample Received By: Judy Garcia

Sample ID: SP16 @ 1' (H502174-43)

BTEx 8021B		mg/kg		Analyzed By: CK						
Analyte	Result	Reporting Limit	Analyzed	Method Blank	BS	% Recovery	True Value QC	RPD	Qualifier	
Benzene*	<0.050	0.050	08/22/2015	ND	2.08	104	2.00	2.74		
Toluene*	<0.050	0.050	08/22/2015	ND	1.96	97.9	2.00	3.52		
Ethylbenzene*	<0.050	0.050	08/22/2015	ND	2.11	106	2.00	3.69		
Total Xylenes*	<0.150	0.150	08/22/2015	ND	5.89	98.2	6.00	3.84		
Total BTEx	<0.300	0.300	08/22/2015	ND						

Surrogate: 4-Bromofluorobenzene (PID) 103 % 85.6-137

Chloride, SM4500CI-B		mg/kg		Analyzed By: AP						
Analyte	Result	Reporting Limit	Analyzed	Method Blank	BS	% Recovery	True Value QC	RPD	Qualifier	
Chloride	<16.0	16.0	08/21/2015	ND	416	104	400	0.00		

TPH 8015M		mg/kg		Analyzed By: CK					
Analyte	Result	Reporting Limit	Analyzed	Method Blank	BS	% Recovery	True Value QC	RPD	Qualifier
GRO C6-C10	<10.0	10.0	08/21/2015	ND	194	97.0	200	0.835	
DRO >C10-C28	<10.0	10.0	08/21/2015	ND	197	98.3	200	4.07	

Surrogate: 1-Chlorooctane 84.1 % 47.2-157

Surrogate: 1-Chlorooctadecane 90.5 % 52.1-176

Sample ID: SP16 @ 2' (H502174-44)

Chloride, SM4500Cl-B		mg/kg		Analyzed By: AP						
Analyte	Result	Reporting Limit	Analyzed	Method Blank	BS	% Recovery	True Value QC	RPD	Qualifier	
Chloride	<16.0	16.0	08/21/2015	ND	416	104	400	0.00		

Cardinal Laboratories

*=Accredited Analyte

PLEASE NOTE: Liability and Damages. Cardinal's liability and client's exclusive remedy for any claim arising, whether based in contract or tort, shall be limited to the amount paid by client for analyses. All claims, including those for negligence and any other cause whatsoever shall be deemed waived unless made in writing and received by Cardinal within thirty (30) days after completion of the applicable service. In no event shall Cardinal be liable for incidental or consequential damages, including, without limitation, business interruptions, loss of use, or loss of profits incurred by client, its subsidiaries, affiliates or successors arising out of or related to the performance of the services hereunder by Cardinal, regardless of whether such claim is based upon any of the above stated reasons or otherwise. Results relate only to the samples identified above. This report shall not be reproduced except in full with written approval of Cardinal Laboratories.



Celey D. Keene, Lab Director/Quality Manager

Analytical Results For:

BBC International, Inc.
Cliff Brunson
P.O. Box 805
Hobbs NM, 88241
Fax To: (575) 397-0397

Received: 08/19/2015
Reported: 08/25/2015
Project Name: NHU SATELLITE #27
Project Number: NONE GIVEN
Project Location: LEA COUNTY, NM

Sampling Date: 08/18/2015
Sampling Type: Soil
Sampling Condition: Cool & Intact
Sample Received By: Judy Garcia

Sample ID: SP16 @3' (H502174-45)**Chloride, SM4500Cl-B****mg/kg****Analyzed By: AP**

Analyte	Result	Reporting Limit	Analyzed	Method Blank	BS	% Recovery	True Value QC	RPD	Qualifier
Chloride	<16.0	16.0	08/21/2015	ND	416	104	400	0.00	

Cardinal Laboratories

*=Accredited Analyte

PLEASE NOTE: Liability and Damages. Cardinal's liability and client's exclusive remedy for any claim arising, whether based in contract or tort, shall be limited to the amount paid by client for analyses. All claims, including those for negligence and any other cause whatsoever shall be deemed waived unless made in writing and received by Cardinal within thirty (30) days after completion of the applicable service. In no event shall Cardinal be liable for incidental or consequential damages, including, without limitation, business interruptions, loss of use, or loss of profits incurred by client, its subsidiaries, affiliates or successors arising out of or related to the performance of the services hereunder by Cardinal, regardless of whether such claim is based upon any of the above stated reasons or otherwise. Results relate only to the samples identified above. This report shall not be reproduced except in full with written approval of Cardinal Laboratories.



Celey D. Keene, Lab Director/Quality Manager

Notes and Definitions

S-06	The recovery of this surrogate is outside control limits due to sample dilution required from high analyte concentration and/or matrix interference's.
ND	Analyte NOT DETECTED at or above the reporting limit
RPD	Relative Percent Difference
**	Samples not received at proper temperature of 6°C or below.
***	Insufficient time to reach temperature.
-	Chloride by SM4500Cl-B does not require samples be received at or below 6°C Samples reported on an as received basis (wet) unless otherwise noted on report

Cardinal Laboratories

*=Accredited Analyte

PLEASE NOTE: Liability and Damages. Cardinal's liability and client's exclusive remedy for any claim arising, whether based in contract or tort, shall be limited to the amount paid by client for analyses. All claims, including those for negligence and any other cause whatsoever shall be deemed waived unless made in writing and received by Cardinal within thirty (30) days after completion of the applicable service. In no event shall Cardinal be liable for incidental or consequential damages, including, without limitation, business interruptions, loss of use, or loss of profits incurred by client, its subsidiaries, affiliates or successors arising out of or related to the performance of the services hereunder by Cardinal, regardless of whether such claim is based upon any of the above stated reasons or otherwise. Results relate only to the samples identified above. This report shall not be reproduced except in full with written approval of Cardinal Laboratories.



Celey D. Keene, Lab Director/Quality Manager



CARDINAL LABORATORIES

101 East Marland, Hobbs, NM 88240
(505) 393-2326 FAX (505) 393-2476

CHAIN-OF-CUSTODY AND ANALYSIS REQUEST

2055

Company Name: BBC International, Inc.

Project Manager: Cliff Brunson

Address: P.O. Box 805

City: Hobbs

Phone #: 575-397-6388

Project #:

Project Name: NHU Satellite #27

Project Location: Lea County, NM

Sampler Name: Jeff Ornelas

BILL TO

P.O. #:

Company: *Longhopper*

Attn:

Address:

City:

State: Zip:

Phone #:

Fax #:

ANALYSIS REQUEST

Lab I.D.	Sample I.D.	(G)RAB OR (C)OMP.	# CONTAINERS	MATRIX					PRESERV.	SAMPLING										
				GROUNDWATER	WASTEWATER	SOIL	OIL	SLUDGE	OTHER :											
11	SP3 @ 2'	6	1	✓							8/13/15	3:30 PM	✓							
12	SP4 @ SURFACE	6	1	✓							8/14/15	8:20 AM	✓							
13	SP4 @ 1'	6	1	✓							8/14/15	9:00 AM	✓							
14	SP4 @ 2'	6	1	✓							8/14/15	9:30 AM	✓							
15	SP5 @ SURFACE	6	1	✓							8/14/15	9:51 AM	✓							
16	SP5 @ 1'	6	1	✓							8/14/15	10:15 AM	✓							
17	SP5 @ 2'	6	1	✓							8/14/15	10:33 AM	✓							
18	SP5 @ 3'	6	1	✓							8/14/15	11:00 AM	✓							
19	SP5 @ 4'	6	1	✓							8/14/15	11:30 AM	✓							
20	SP6 @ SURFACE	6	1	✓							8/14/15	11:51 AM	✓							

PLEASE NOTE: Liability and Damages. Cardinal's liability and client's exclusive remedy for any claim arising whether based in contract or tort, shall be limited to the amount paid by the client for the analyses. All claims including those for negligence and any other cause whatsoever shall be deemed waived unless made in writing and received by Cardinal within 30 days after completion of the applicable service. In no event shall Cardinal be liable for incidental or consequential damages, including without limitation, business interruptions, loss of use, or loss of profits incurred by client, its subsidiaries, affiliates or successors arising out of or related to the performance of services hereunder by Cardinal, regardless of whether such claim is based upon any of the above stated reasons or otherwise.

Relinquished By: *Jeff Ornelas* Date: *8-19-15* Received By: *Longhopper*

Relinquished By: *Jeff Ornelas* Date: *8-19-15* Received By: *Longhopper*

Delivered By: (Circle One) *UPS* Date: *8-19-15* Received By: *Longhopper*

Sampler - UPS - Bus - Other: *-2.88* Sample Condition: *Good* Checked By: *Longhopper*

* Cardinal cannot accept verbal changes. Please fax written changes to 505-393-2476

#54



CARDINAL LABORATORIES

101 East Marland, Hobbs, NM 88240
(505) 393-2326 FAX (505) 393-2476

CHAIN-OF-CUSTODY AND ANALYSIS REQUEST

285

Company Name: BBC International, Inc.		BILL TO		ANALYSIS REQUEST																		
Project Manager: Cliff Brunson		P.O. #:																				
Address: P.O. Box 805		Company: <i>OmniFuel</i>																				
City: Hobbs		Attn:																				
State: NM Zip: 88241		Address:																				
Phone #: 575-397-6388		City:																				
Fax #: 575-397-0397		State:																				
Project #: Project Owner: Oxy		Zip:																				
Project Name: NHU Satellite #27		Phone #:																				
Project Location: Lea County, NM		Fax #:																				
Sampler Name: Jeff Ornelas																						
FOR LAB USE ONLY																						
Lab I.D.	Sample I.D.	(G)RAB OR (C)OMP.	# CONTAINERS	MATRIX					PRESERV	SAMPLING												
				GROUNDWATER	WASTEWATER	SOIL	OIL	SLUDGE	OTHER :	ACID/BASE:	ICE / COOL	OTHER :	DATE	TIME	C1	TPH	BTEX					
21	SP6 @ 1'	G	1										8/14/15	12:00 PM	✓	✓	✓					
22	SP6 @ 2'	G	1										8/14/15	1:30 PM	✓	✓	✓					
23	SP7 @ SURFACE	G	1										8/14/15	2:00 PM	✓	✓	✓					
24	SP8 @ SURFACE	G	1										8/14/15	3:00 PM	✓	✓	✓					
25	SP8 @ 1'	G	1										8/17/15	8:30 AM	✓	✓	✓					
26	SP8 @ 2'	G	1										8/17/15	9:00 AM	✓	✓	✓					
27	SP8 @ 3'	G	1										8/17/15	9:38 AM	✓	✓	✓					
28	SP9 @ SURFACE	G	1										8/17/15	10:30 AM	✓	✓	✓					
29	SP9 @ 1'	G	1										8/17/15	10:53 AM	✓	✓	✓					
30	SP10 @ SURFACE	G	1										8/17/15	11:31 AM	✓	✓	✓					
<small>PLEASE NOTE: Liability and Damages. Cardinal's liability and client's exclusive remedy for any claim arising whether based in contract or tort, shall be limited to the amount paid by the client for the analyses. All claims including those for negligence and any other cause whatsoever shall be deemed waived unless made in writing and received by Cardinal within 30 days after completion of the applicable service. In no event shall Cardinal be liable for incidental or consequential damages, including without limitation, business interruptions, loss of use, or loss of profits incurred by client, its subsidiaries, affiliates or successors arising out of or related to the performance of services hereunder by Cardinal, regardless of whether such claim is based upon any of the above stated reasons or otherwise.</small>																						
Relinquished By:	Date: 8-19-15	Received By:	Date: 8-19-15																			
Time: 3:00		Time: 8:19																				
Relinquished By: <i>Jeff Ornelas</i>	Date: 8-19-15	Received By: <i>Cliff Brunson</i>	Date: 8-19-15																			
Time: 15:38		Time: 15:38																				
Delivered By: (Circle One)	Sample Condition	CHECKED BY: (Initials)																				
Sampler - UPS - Bus - Other:	<input type="checkbox"/> Cool <input type="checkbox"/> Intact																					
	<input type="checkbox"/> Yes <input type="checkbox"/> No																					
	<input type="checkbox"/> Yes <input type="checkbox"/> No																					
REMARKS:																						

† Cardinal cannot accept verbal changes. Please fax written changes to 505-393-2476

#64



CARDINAL LABORATORIES

101 East Marland, Hobbs, NM 88240
(505) 393-2326 FAX (505) 393-2476

CHAIN-OF-CUSTODY AND ANALYSIS REQUEST

1085

Company Name: BBC International, Inc.

Project Manager: Cliff Brunson

Address: P.O. Box 805

City: Hobbs

Phone #: 575-397-6388

Project #:

Project Name: NHU Satellite #27

Project Location: Lea County, NM

Sampler Name: Jeff Ornelas

BILL TO

ANALYSIS REQUEST

P.O. #:

Company: Tony Aguilar

Attn:

Address:

City:

State: Zip:

Phone #:

Fax #:

FOR LAB USE ONLY

Lab I.D.

Sample I.D.

H502174

Lab I.D.	Sample I.D.	(G)RAB OR (C)OMP.	# CONTAINERS	MATRIX	PRESERV.	SAMPLING	DATE	TIME	CL	TPH	BTEX								
31.	SP10 @ 1'	61	1	GROUNDWATER			8/17/15	11:45 AM	✓	✓	✓								
32.	SP11 @ SURFACE	61	1	WASTEWATER			8/17/15	1:11 PM	✓	✓	✓								
33.	SP11 @ 1'	61	1	SOIL			8/17/15	1:39 PM	✓	✓	✓								
34.	SP12 @ SURFACE	61	1	OIL			8/17/15	2:33 PM	✓	✓	✓								
35.	SP12 @ 1'	61	1	SLUDGE			8/17/15	2:58 PM	✓	✓	✓								
36.	SP13 @ SURFACE	61	1	OTHER :			8/17/15	3:33 PM	✓	✓	✓								
37.	SP13 @ 1'	61	1	ACID/BASE:			8/17/15	4:00 PM	✓	✓	✓								
38.	SP14 @ SURFACE	61	1	ICE / COOL			8/17/15	4:20 PM	✓	✓	✓								
39.	SP14 @ 1'	61	1	OTHER :			8/18/15	8:31 AM	✓	✓	✓								
40.	SP15 @ SURFACE	61	1				8/18/15	10:00 AM	✓	✓	✓								

PLEASE NOTE: Liability and Damages. Cardinal's liability and client's exclusive remedy for any claim arising whether based in contract or tort, shall be limited to the amount paid by the client for the analyses. All claims, including those for negligence and any other cause whatsoever shall be deemed waived unless made in writing and received by Cardinal within 30 days after completion of the applicable service. In no event shall Cardinal be liable for incidental or consequential damages, including without limitation, business interruptions, loss of use, or loss of profits incurred by client, its subsidiaries, affiliates or successors arising out of or related to the performance of services hereunder by Cardinal, regardless of whether such claim is based upon any of the above stated reasons or otherwise.

Relinquished By:

Received By:

Phone Result: ☐ Yes ☐ No Add'l Phone #:
 Fax Result: ☐ Yes ☐ No Add'l Fax #:
 REMARKS:

Relinquished By:

Received By:

Checked By: (Initials)

Delivered By: (Circle One)

Sampler - UPS - Bus - Other:

Cardinal cannot accept verbal changes. Please fax written changes to 505-393-2476

ORDINAL LABORATORIES

101 East Marland, Hobbs, NM 88240
(505) 393-2326 FAX (505) 393-2476

CHAIN-OF-CUSTODY AND ANALYSIS REQUEST

[illegible]

Kathy Purvis

From: Keyes, Jamie, EMNRD <Jamie.Keyes@state.nm.us>
Sent: Wednesday, September 30, 2015 2:28 PM
To: Cliff Brunson; Jones, Kellie, EMNRD
Cc: Tony Aguilar ; Ken Swinney; Jennifer Gilkey; Kathy Purvis
Subject: RE: OXY - NHU Satellite #27 - Remediation Plan

Good afternoon,

The work plan is approved as is. Keep us informed.

Thank you,

Jamie

From: Cliff Brunson [<mailto:cbrunson@bbcinternational.com>]
Sent: Saturday, September 26, 2015 1:58 PM
To: Jones, Kellie, EMNRD
Cc: Keyes, Jamie, EMNRD; Oberding, Tomas, EMNRD; Tony Aguilar ; Ken Swinney; Jennifer Gilkey; Kathy Purvis
Subject: OXY - NHU Satellite #27 - Remediation Plan

Kellie,

This e-mail is to confirm our discussion concerning the remediation plan for the Oxy NHU Satellite #27. I have attached the information packet that we used in our discussion with a cover page describing the remediation plan that we agreed upon.

If you would please reply back via e-mail with your concurrence on this plan, it would be greatly appreciated.

Thanks, Cliff

Cliff P. Brunson, CEI, CRS
President
BBC International, Inc.
World-Wide Environmental Specialists
Mailing Address:
P. O. Box 805
Hobbs, NM 88241-0805 USA
Shipping Address:
1324 W. Marland St.
Hobbs, NM 88240 USA
Phone: (575) 397-6388
Fax: (575) 397-0397
E-Mail: cbrunson@bbcinternational.com

Confidentiality Notice: This electronic transmission (and any attached documents) is intended only for the person(s) to whom it is addressed and may contain information that is privileged, confidential, or otherwise protected from disclosure. If you have received this transmission in error, please immediately notify the sender by e-mail or by telephone call to (575) 397-6388 for handling instructions. Any disclosure or distribution of the contents of this transmission by anyone other than the named recipient(s) is strictly prohibited.





