

**APPROVED**

**By Olivia Yu at 5:06 pm, Mar 21, 2017**

Delineation workplan is approved with these conditions:

- 1) Establish 4 soil samples, in the 4 cardinal directions in the overspray area at a depth of 2 ft.
- 2) Collect a 6" depth background sample north of the release location on the pasture.
- 3) All soil samples need to be sent to an accredited laboratory for Benzene, BTEX, TPH, and chloride analyses.

**1RP-4532**

**DELINEATION REPORT**  
**Eunice South Justice 4 Inch Down Leg**  
Lea County, New Mexico

Latitude: 32° 07' 09.6600" North  
Longitude: 103° 07' 27.7680" West

LAI Project No. 17-0121-01

March 3, 2017

Prepared for:

Targa Midstream Services, LLC  
P.O. Box 1909  
Eunice, New Mexico 88231

Prepared by:

Larson & Associates, Inc.  
507 North Marienfeld Street, Suite 205  
Midland, Texas 79701



Mark J. Larson, P.G.

Certified Professional Geologist #10490

**This Page Intentionally Left Blank**

## Contents

1.0	INTRODUCTION .....	1
1.1	Physical Setting.....	1
1.2	Recommended Remediation Action Levels.....	1
2.0	DELINEATION .....	2
3.0	CONCLUSION .....	2
4.0	RECOMMENDATION.....	2

## Tables

Table 1	Delineation Soil Sample Analytical Data Summary
---------	---

## Figures

Figure 1	Topographic Map
Figure 2	Aerial Map
Figure 2a	Focused Aerial Photograph

## Attachments

Appendix A	Waste Manifests
Appendix B	Photographs
Appendix C	Laboratory Reports
Appendix D	Initial C-141

## 1.0 INTRODUCTION

Larson & Associates, Inc. (LAI) has prepared this delineation report on behalf of Targa Midstream Services, LLC (Targa) for a natural gas liquids (NGL) release from a down leg on the Eunice South Justice 4 Inch Pipeline (Site) in Unit E (SW/4, NW/4), Section 24, Township 25 South, Range 37 East, in Lea County, New Mexico (the Site). The Site is located about 3 miles east of Jal, New Mexico. The release was discovered on December 18, 2016 and reported to the New Mexico Oil Conservation Division (OCD) District 1, on the same day.

On December 18, 2016, Targa personnel responded to the release. Targa personnel estimated that approximately ten (10) barrels (bbl) of liquid was released with no liquid recovered. The leak caused NGL to accumulate on the ground around the down leg and covered an area approximately 10 x 20 feet or about 200 square feet. Wind dispersed NGL south and covered an area measuring about 50 x 100 feet or about 5,000 square feet. Targa personnel repaired the leak and initiated cleanup. Verbal notification was provided to the New Mexico Oil Conservation Division (OCD) District 1 (Mark Whitaker) on December 19, 2016. The initial C-141 was submitted on December 20, 2016. The OCD assigned the release remediation permit number 1RP-4532. Cleanup was performed between December 19, 2016 and January 4, 2017. The geodetic position is 32° 07' 09.6600" North and 103° 07' 27.7680" West. Figure 1 presents a topographic map. Figure 2 presents an aerial map.

### 1.1 *Physical Setting*

The physical setting is as follows:

- The surface elevation is about 3,084 feet above mean sea level (MSL);
- The topography slopes gently to the south and southeast;
- No surface water features are present within 1 mile of the Site;
- The surface soil is designated "Simona-Upton association", consisting of about 8 inches of gravelly fine sandy loam, underlain by approximately 8 inches of fine sandy loam overlying caliche;
- The soil is derived from reworking the Blackwater Draw (Pleistocene) and Ogallala (Pliocene) formations, in descending order;
- Groundwater occurs at about 70 feet below ground surface (bgs) according to records from the New Mexico Office of the State Engineer (NMOSE) and U.S. Geological Survey;
- The nearest fresh water well is located in Unit P (SE/4, SE/4), Section 14, Township 25 South, Range 37 East about 0.25 miles northwest (up gradient).

### 1.2 *Recommended Remediation Action Levels*

Recommended remediation action levels (RRALs) were calculated for benzene, total BTEX (benzene, ethylbenzene, toluene and xylenes) and total petroleum hydrocarbons (TPH) based on the following criteria established by the New Mexico Oil Conservation Division (OCD) in "Guidelines for Remediation of Leaks, Spills and Releases, August 13, 1993":

<b>Criteria</b>	<b>Result</b>	<b>Score</b>
Depth-to-Groundwater	50 - 99 feet	10
Wellhead Protection Area	No	0
Distance to Surface Water Body	>1000 Horizontal Feet	0

The following RRAL apply to the release for ranking score: 10

- Benzene 10 mg/Kg
- BTEX 50 mg/Kg
- TPH 1,000 mg/Kg

## 2.0 DELINEATION

Between December 19, 2016 and January 4, 2017, Targa personnel supervised excavation of soil from around the down leg and the spray area south of the Site. Soil was excavated from an area around the down leg measuring approximately 10 x 20 feet to about 4 feet below ground surface (bgs). Soil was excavated from the spray area to about 1 foot bgs. Approximately 308 cubic yards of contaminated soil was hauled and disposed at Sundance Services, Inc., between December 19, 2016 and January 4, 2017. Appendix A presents the waste manifests. Appendix B presents photographs.

On January 3, 2017, Targa personnel collected delineation soil samples from near the center of the sidewalls and bottom near the center of the excavation. The sidewall samples were collected about 3 feet bgs whereas the bottom sample was collected at about 4 feet bgs. The samples were delivered to Cardinal Laboratories in Hobbs, New Mexico, which analyzed the samples for total petroleum hydrocarbons (TPH), including gasoline range organics (C6 – C10) and diesel range organics (>C10 – C28) by EPA SW-846 Method 8015M and chloride by Method SM4500CIB. The in-situ TPH concentrations are below the method reporting limit (RL) and RRAL in all samples. The in-situ chloride concentrations are below the OCD delineation limit of 250 mg/Kg in the sidewall samples. The in-situ chloride concentration in the bottom sample at about 4 feet bgs is 304 mg/Kg and above the OCD delineation limit of 250 mg/Kg. On January 6, 2017, Targa personnel used a backhoe to collect another bottom sample near the center of the excavation at about 5 feet bgs to delineate the chloride. Cardinal Laboratories reported chloride at 48.0 mg/Kg and below the OCD delineation limit. Table 1 presents the analytical data summary. Figure 2a presents a focused aerial photograph and approximate location of the excavation and soil samples. Appendix C presents the laboratory analytical report.

## 3.0 CONCLUSION

Targa has delineated and remediated the release according to the RRAL.

## 4.0 RECOMMENDATION

On January 26, 2017, OCD District 1 Environmental Specialist, Kristen Lynch, approved Targa's request to backfill the excavation. The excavation was backfilled with clean soil. Targa requests no further action for RP1-4532. Appendix D presents the initial C-141 and OCD approval to backfill the excavation.

## TABLES

Table 1

1RP-4532

## Delineation Soil Sample Analytical Data Summary

Targa Midstream Services, LLC, Eunice South Justice 4" Release

Unit E (SW/4, NW/4), Section 24, Township 25 South, Range 37 East

Lea County, New Mexico

Sample	Location	Depth (Feet)	Collection Date	Status	C6 - C10 (mg/Kg)	>C10 - C28 (mg/Kg)	C6 - C28 (mg/Kg)	Chloride (mg/Kg)
<b>OCD RRAL:</b>								
<b>North</b>	Sidewall	3	1/3/2017	In-Situ	<10.0	<10.0	<10.0	32.0
<b>South</b>	Sidewall	3	1/3/2017	In-Situ	<10.0	<10.0	<10.0	96.0
<b>East</b>	Sidewall	3	1/3/2017	In-Situ	<10.0	<10.0	<10.0	240
<b>West</b>	Sidewall	3	1/3/2017	In-Situ	<10.0	<10.0	<10.0	176
<b>Bottom</b>	Center	4	1/3/2017	In-Situ	<10.0	<10.0	<10.0	304
<b>Bottom</b>	Center	5	1/6/2017	In-Situ	<10.0	<10.0	<10.0	48.0

Notes: laboratory analysis performed by Cardinal Laboratories, Hobbs, New Mexico, by EPA SW-846 Method 8015M (TPH) and SM4500ClB (chloride)

Depth in feet below ground surface (bgs)

mg/Kg: milligrams per kilogram equivalent to parts per million (ppm)

RRAL: Remediation action level calculated from OCD guidance document (August 13, 1993)

\*: Denotes OCDdelineation level

**Bold denotes concentration above the method reporting limit but below the delineation limit**

## FIGURES

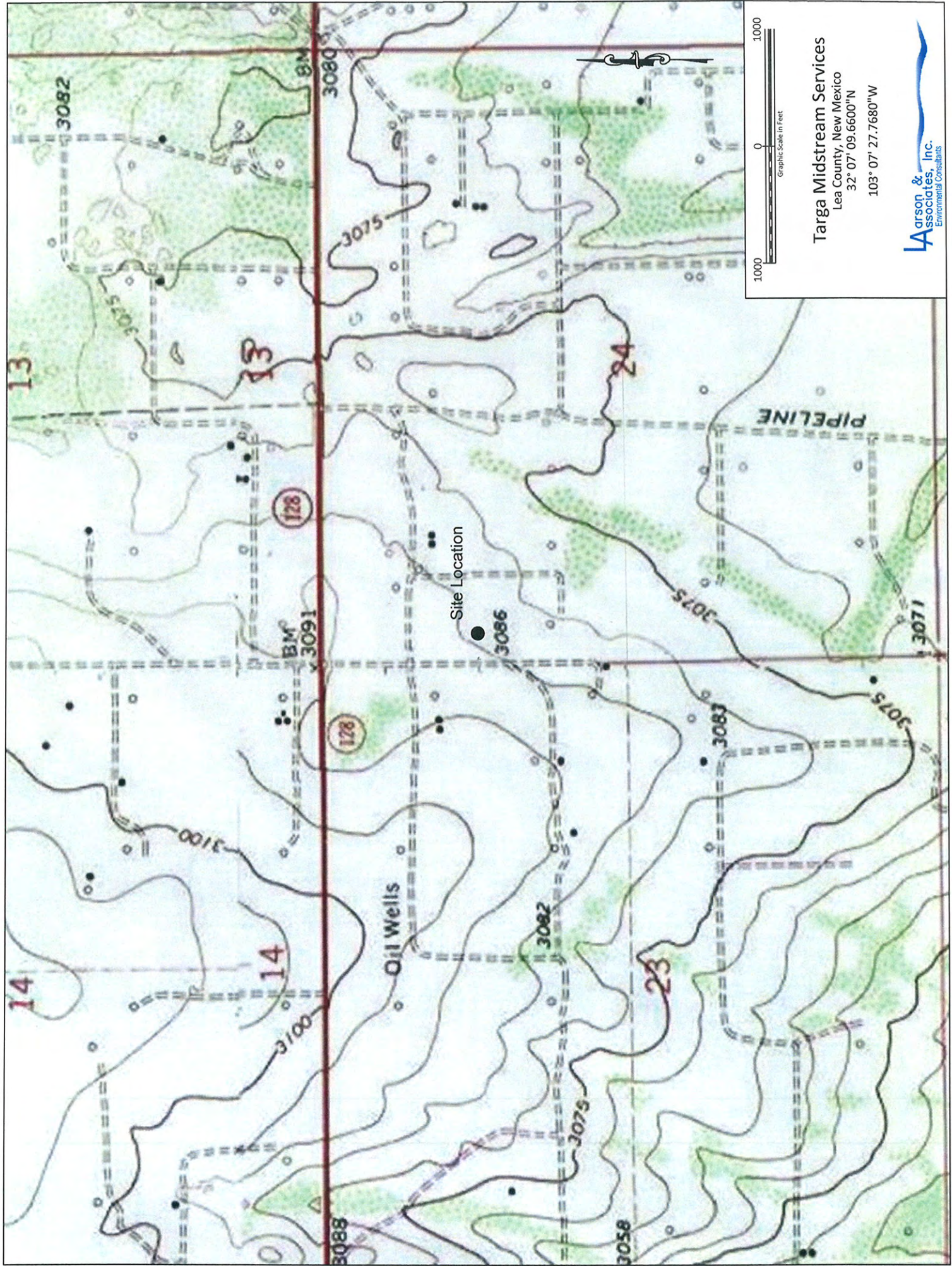
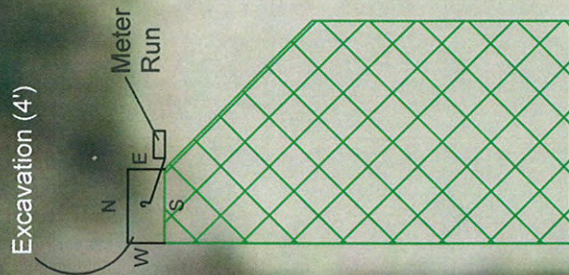


Figure 1 - Topographic Map



Figure 2 - Aerial Map



Legend



- Approximate Area of  
Hydrocarbon Spray



Targa Midstream Services  
Lea County, New Mexico  
32° 07' 09.6600"N  
103° 07' 27.7680"W



Based on measurements provided by Targa Midstream Services, LLC

Figure 2a - Focused Aerial Map

**APPENDIX A**  
**Waste Manifests**



# SUNDANCE SERVICES, Inc.

P.O. Box 1737 Eunice, New Mexico 88231  
(575) 394-2511

TICKET No. 402371

LEASE OPERATOR/SHIPPER/COMPANY:

LEASE NAME:

TRANSPORTER COMPANY:

DATE: 12-19-16 VEHICLE NO: 127

TIME 1:35 AM/PM

GENERATOR COMPANY  
MAN'S NAME: P. Holland

CHARGE TO:

RIG NAME  
AND NUMBER

## TYPE OF MATERIAL

- |   |   |                                   |
|---|---|-----------------------------------|
| <input type="checkbox"/> Production Water | <input type="checkbox"/> Drilling Fluids              | <input type="checkbox"/> Rinsate  |
| <input type="checkbox"/> Tank Bottoms     | <input checked="" type="checkbox"/> Contaminated Soil | <input type="checkbox"/> Jet Out  |
| <input type="checkbox"/> Solids           | <input type="checkbox"/> BS&W Content:                | <input type="checkbox"/> Call Out |

Description:

RRC or API #

C-133#

VOLUME OF MATERIAL [ ] BBLs.

[X] YARD

[ ]

AS A CONDITION TO SUNDANCE SERVICES, INC.'S ACCEPTANCE OF THE MATERIALS SHIPPED WITH THIS JOB TICKET, OPERATOR/SHIPPER REPRESENTS AND WARRANTS THAT THE WASTE MATERIAL SHIPPED HEREWITH IS MATERIAL EXEMPT FROM THE RESOURCE, CONSERVATION AND RECOVERY ACT OF 1976, AS AMENDED FROM TIME TO TIME, 40 U.S.C. § 6901, et seq., THE NM HEALTH AND SAF. CODE § 361.001 et seq., AND REGULATIONS RELATED THERETO, BY VIRTUE OF THE EXEMPTION AFFORDED DRILLING FLUIDS, PRODUCED WATERS, AND OTHER WASTE ASSOCIATED WITH THE EXPLORATION, DEVELOPMENT OR PRODUCTION OF CRUDE OIL OR NATURAL GAS OR GEOTHERMAL ENERGY.



# SUNDANCE SERVICES, Inc.

P.O. Box 1737 Eunice, New Mexico 88231  
(575) 394-2511

TICKET No. 402387

LEASE OPERATOR/SHIPPER/COMPANY:

LEASE NAME:

TRANSPORTER COMPANY:

TIME 3:16 AM/PM

DATE: 12-19-16 VEHICLE NO: 127

GENERATOR COMPANY  
MAN'S NAME:

CHARGE TO:

RIG NAME  
AND NUMBER

## TYPE OF MATERIAL

- ☐ Production Water ☐ Drilling Fluids ☐ Rinsate
- ☐ Tank Bottoms ☐ Contaminated Soil ☐ Jet Out
- ☐ Solids ☐ BS&W Content: ☐ Call Out

Description:

RRC or API #

C-133#

VOLUME OF MATERIAL [ ] BBLs.

[ ] YARD

[ ]

AS A CONDITION TO SUNDANCE SERVICES, INC.'S ACCEPTANCE OF THE MATERIALS SHIPPED WITH THIS JOB TICKET, OPERATOR/SHIPPER REPRESENTS AND WARRANTS THAT THE WASTE MATERIAL SHIPPED HEREWITH IS MATERIAL EXEMPT FROM THE RESOURCE, CONSERVATION AND RECOVERY ACT OF 1976, AS AMENDED FROM TIME TO TIME, 40 U.S.C. § 6901, et seq., THE NM HEALTH AND SAF. CODE § 361.001 et seq., AND REGULATIONS RELATED THERETO, BY VIRTUE OF THE EXEMPTION AFFORDED DRILLING FLUIDS, PRODUCED WATERS, AND OTHER WASTE ASSOCIATED WITH THE EXPLORATION, DEVELOPMENT OR PRODUCTION OF CRUDE OIL OR NATURAL GAS OR GEOTHERMAL ENERGY.



# SUNDANCE SERVICES, Inc.

P.O. Box 1737 Eunice, New Mexico 88231  
(575) 394-2511

TICKET No. 402423

LEASE OPERATOR/SHIPPER/COMPANY: *Targa*

LEASE NAME: *Sundance Battery*

TRANSPORTER COMPANY: *FPT*

TIME 8:28 AM/PM

DATE: *12-26-16* VEHICLE NO: *127*

GENERATOR COMPANY  
MAN'S NAME: *P. Holland*

CHARGE TO: *Targa*

RIG NAME  
AND NUMBER

## TYPE OF MATERIAL

- ☐ Production Water  
☐ Tank Bottoms  
☐ Solids

- ☐ Drilling Fluids  
☒ Contaminated Soil  
☐ BS&W Content:

- ☐ Rinsate  
☐ Jet Out  
☐ Call Out

Description: *d/p*

RRC or API #

C-133#

VOLUME OF MATERIAL [ ] BBLs. [ ] YARD

[ ]

AS A CONDITION TO SUNDANCE SERVICES, INC.'S ACCEPTANCE OF THE MATERIALS SHIPPED WITH THIS JOB TICKET, OPERATOR/SHIPPER REPRESENTS AND WARRANTS THAT THE WASTE MATERIAL SHIPPED HEREWITH IS MATERIAL EXEMPT FROM THE RESOURCE, CONSERVATION AND RECOVERY ACT OF 1976, AS AMENDED FROM TIME TO TIME, 40 U.S.C. § 6901, et seq., THE NM HEALTH AND SAF. CODE § 361.001 et seq., AND REGULATIONS RELATED THERETO, BY VIRTUE OF THE EXEMPTION AFFORDED DRILLING FLUIDS, PRODUCED WATERS, AND OTHER WASTE ASSOCIATED WITH THE EXPLORATION, DEVELOPMENT OR PRODUCTION OF CRUDE OIL OR NATURAL GAS OR GEOTHERMAL ENERGY.



# SUNDANCE SERVICES, Inc.

P.O. Box 1737 Eunice, New Mexico 88231  
(575) 394-2511

TICKET No. 402437

LEASE OPERATOR/SHIPPER/COMPANY:

LEASE NAME:

TRANSPORTER COMPANY:

TIME AM/PM

DATE: 12-26-16 VEHICLE NO: 137

GENERATOR COMPANY  
MAN'S NAME:

CHARGE TO:

RIG NAME  
AND NUMBER

## TYPE OF MATERIAL

- ☐ Production Water  
☐ Tank Bottoms  
☐ Solids

- ☐ Drilling Fluids  
☒ Contaminated Soil  
☐ BS&W Content:

- ☐ Rinsate  
☐ Jet Out  
☐ Call Out

Description:

RRC or API #

C-133#

VOLUME OF MATERIAL [ ] BBLs.

[ ] YARD

[ ]

AS A CONDITION TO SUNDANCE SERVICES, INC.'S ACCEPTANCE OF THE MATERIALS SHIPPED WITH THIS JOB TICKET, OPERATOR/SHIPPER REPRESENTS AND WARRANTS THAT THE WASTE MATERIAL SHIPPED HEREWITH IS MATERIAL EXEMPT FROM THE RESOURCE, CONSERVATION AND RECOVERY ACT OF 1976, AS AMENDED FROM TIME TO TIME, 40 U.S.C. § 6901, et seq., THE NM HEALTH AND SAF. CODE § 361.001 et seq., AND REGULATIONS RELATED THERETO, BY VIRTUE OF THE EXEMPTION AFFORDED DRILLING FLUIDS, PRODUCED WATERS, AND OTHER WASTE ASSOCIATED WITH THE EXPLORATION, DEVELOPMENT OR PRODUCTION OF CRUDE OIL OR NATURAL GAS OR GEOTHERMAL ENERGY.



# SUNDANCE SERVICES, Inc.

P.O. Box 1737 Eunice, New Mexico 88231  
(575) 394-2511

TICKET No. **402466**

LEASE OPERATOR/SHIPPER/COMPANY:

LEASE NAME:

TRANSPORTER COMPANY:

DATE: 12-26-16 VEHICLE NO: 107

TIME 2:14 AM/PM

GENERATOR COMPANY  
MAN'S NAME: P. H. H. H. H.

CHARGE TO:

RIG NAME  
AND NUMBER

## TYPE OF MATERIAL

- ☐ Production Water ☐ Drilling Fluids ☐ Rinsate  
☐ Tank Bottoms ☒ Contaminated Soil ☐ Jet Out  
☐ Solids ☐ BS&W Content: ☐ Call Out

Description:

RRC or API #

C-133#

VOLUME OF MATERIAL [ ] BBLs. [ ] YARD

[ ]

AS A CONDITION TO SUNDANCE SERVICES, INC.'S ACCEPTANCE OF THE MATERIALS SHIPPED WITH THIS JOB TICKET, OPERATOR/SHIPPER REPRESENTS AND WARRANTS THAT THE WASTE MATERIAL SHIPPED HEREWITH IS MATERIAL EXEMPT FROM THE RESOURCE, CONSERVATION AND RECOVERY ACT OF 1976, AS AMENDED FROM TIME TO TIME, 40 U.S.C. § 6901, et seq., THE NM HEALTH AND SAF. CODE § 361.001 et seq., AND REGULATIONS RELATED THERETO, BY VIRTUE OF THE EXEMPTION AFFORDED DRILLING FLUIDS, PRODUCED WATERS, AND OTHER WASTE ASSOCIATED WITH THE EXPLORATION, DEVELOPMENT OR PRODUCTION OF CRUDE OIL OR NATURAL GAS OR GEOTHERMAL ENERGY.



# SUNDANCE SERVICES, Inc.

P.O. Box 1737 Eunice, New Mexico 88231  
(575) 394-2511

TICKET No.

402558

LEASE OPERATOR/SHIPPER/COMPANY:

Targa

LEASE NAME:

South Justice Battery

TRANSPORTER COMPANY:

EPT

TIME

AM/PM

2:07

DATE: 12-21-16

VEHICLE NO: 127

GENERATOR COMPANY  
MAN'S NAME

R. Holland

CHARGE TO:

Targa

RIG NAME  
AND NUMBER

## TYPE OF MATERIAL

☐ Production Water

☐ Drilling Fluids

☐ Rinsate

☐ Tank Bottoms

☒ Contaminated Soil

☐ Jet Out

☐ Solids

☐ BS&W Content:

☐ Call Out

Description:

old

RRC or API #

C-133#

VOLUME OF MATERIAL

[ ] BBLs.

:

[ ] YARD

:

[ ]

AS A CONDITION TO SUNDANCE SERVICES, INC.'S ACCEPTANCE OF THE MATERIALS SHIPPED WITH THIS JOB TICKET, OPERATOR/SHIPPER REPRESENTS AND WARRANTS THAT THE WASTE MATERIAL SHIPPED HEREWITH IS MATERIAL EXEMPT FROM THE RESOURCE, CONSERVATION AND RECOVERY ACT OF 1976, AS AMENDED FROM TIME TO TIME, 40 U.S.C. § 6901, et seq., THE NM HEALTH AND SAF. CODE § 361.001 et seq., AND REGULATIONS RELATED THERETO, BY VIRTUE OF THE EXEMPTION AFFORDED DRILLING FLUIDS, PRODUCED WATERS, AND OTHER WASTE ASSOCIATED WITH THE EXPLORATION, DEVELOPMENT OR PRODUCTION OF CRUDE OIL OR NATURAL GAS OR GEOTHERMAL ENERGY.



# SUNDANCE SERVICES, Inc.

P.O. Box 1737 Eunice, New Mexico 88231  
(575) 394-2511

TICKET No.

402602

LEASE OPERATOR/SHIPPER/COMPANY:

LEASE NAME:

TRANSPORTER COMPANY:

DATE: 12-22-16 VEHICLE NO: 127

TIME 5:15 AM/PM

GENERATOR COMPANY  
MAN'S NAME:

CHARGE TO:

RIG NAME  
AND NUMBER

## TYPE OF MATERIAL

☐ Production Water  
☐ Tank Bottoms  
☐ Solids

☐ Drilling Fluids  
☒ Contaminated Soil  
☐ BS&W Content:

☐ Rinsate  
☐ Jet Out  
☐ Call Out

Description:

RRC or API #

C-133#

VOLUME OF MATERIAL [ ] BBLs.

[ ] YARD

[ ]

AS A CONDITION TO SUNDANCE SERVICES, INC.'S ACCEPTANCE OF THE MATERIALS SHIPPED WITH THIS JOB TICKET, OPERATOR/SHIPPER REPRESENTS AND WARRANTS THAT THE WASTE MATERIAL SHIPPED HEREWITH IS MATERIAL EXEMPT FROM THE RESOURCE, CONSERVATION AND RECOVERY ACT OF 1976, AS AMENDED FROM TIME TO TIME, 40 U.S.C. § 6901, et seq., THE NM HEALTH AND SAF. CODE § 361.001 et seq., AND REGULATIONS RELATED THERETO, BY VIRTUE OF THE EXEMPTION AFFORDED DRILLING FLUIDS, PRODUCED WATERS, AND OTHER WASTE ASSOCIATED WITH THE EXPLORATION, DEVELOPMENT OR PRODUCTION OF CRUDE OIL OR NATURAL GAS OR GEOTHERMAL ENERGY.



# SUNDANCE SERVICES, Inc.

P.O. Box 1737 Eunice, New Mexico 88231  
(575) 394-2511

TICKET No.

402618

LEASE OPERATOR/SHIPPER/COMPANY:

LEASE NAME:

TRANSPORTER COMPANY:

TIME

DATE: 12-22-16 VEHICLE NO: 127

GENERATOR COMPANY  
MAN'S NAME:

CHARGE TO:

RIG NAME  
AND NUMBER

## TYPE OF MATERIAL

- ☐ Production Water ☐ Drilling Fluids ☐ Rinsate  
☐ Tank Bottoms ☒ Contaminated Soil ☐ Jet Out  
☐ Solids ☐ BS&W Content: ☐ Call Out

Description:

RRC or API #

C-133#

VOLUME OF MATERIAL [ ] BBLs.

[ ] YARD

[ ]

AS A CONDITION TO SUNDANCE SERVICES, INC.'S ACCEPTANCE OF THE MATERIALS SHIPPED WITH THIS JOB TICKET, OPERATOR/SHIPPER REPRESENTS AND WARRANTS THAT THE WASTE MATERIAL SHIPPED HERewith IS MATERIAL EXEMPT FROM THE RESOURCE, CONSERVATION AND RECOVERY ACT OF 1976, AS AMENDED FROM TIME TO TIME, 40 U.S.C. § 6901, et seq., THE NM HEALTH AND SAF. CODE § 361.001 et seq., AND REGULATIONS RELATED THERETO, BY VIRTUE OF THE EXEMPTION AFFORDED DRILLING FLUIDS, PRODUCED WATERS, AND OTHER WASTE ASSOCIATED WITH THE EXPLORATION, DEVELOPMENT OR PRODUCTION OF CRUDE OIL OR NATURAL GAS OR GEOTHERMAL ENERGY.



# SUNDANCE SERVICES, Inc.

P.O. Box 1737 Eunice, New Mexico 88231  
(575) 394-2511

TICKET No.

402634

LEASE OPERATOR/SHIPPER/COMPANY: *Tange*

LEASE NAME: *South 275th Bldg*

TRANSPORTER COMPANY: *FPI*

TIME *11:45* AM/PM

DATE: *12-22-14* VEHICLE NO: *127*

GENERATOR COMPANY  
MAN'S NAME: *R. Holland*

CHARGE TO: *Tange*

RIG NAME  
AND NUMBER

## TYPE OF MATERIAL

- |   |   |                                   |
|---|---|-----------------------------------|
| <input type="checkbox"/> Production Water | <input type="checkbox"/> Drilling Fluids              | <input type="checkbox"/> Rinsate  |
| <input type="checkbox"/> Tank Bottoms     | <input checked="" type="checkbox"/> Contaminated Soil | <input type="checkbox"/> Jet Out  |
| <input type="checkbox"/> Solids           | <input type="checkbox"/> BS&W Content:                | <input type="checkbox"/> Call Out |

Description: *o/b*

RRC or API #

C-133#

VOLUME OF MATERIAL [ ] BBLs.

[ ] YARD

[ ]

AS A CONDITION TO SUNDANCE SERVICES, INC.'S ACCEPTANCE OF THE MATERIALS SHIPPED WITH THIS JOB TICKET, OPERATOR/SHIPPER REPRESENTS AND WARRANTS THAT THE WASTE MATERIAL SHIPPED HEREWITH IS MATERIAL EXEMPT FROM THE RESOURCE, CONSERVATION AND RECOVERY ACT OF 1976, AS AMENDED FROM TIME TO TIME, 40 U.S.C. § 6901, et seq., THE NM HEALTH AND SAF. CODE § 361.001 et seq., AND REGULATIONS RELATED THERETO, BY VIRTUE OF THE EXEMPTION AFFORDED DRILLING FLUIDS, PRODUCED WATERS, AND OTHER WASTE ASSOCIATED WITH THE EXPLORATION, DEVELOPMENT OR PRODUCTION OF CRUDE OIL OR NATURAL GAS OR GEOTHERMAL ENERGY.



# SUNDANCE SERVICES, Inc.

P.O. Box 1737 Eunice, New Mexico 88231  
(575) 394-2511

TICKET No.

402845

LEASE OPERATOR/SHIPPER/COMPANY:

LEASE NAME:

TRANSPORTER COMPANY:

TIME

DATE:

VEHICLE NO:

GENERATOR COMPANY  
MAN'S NAME:

CHARGE TO:

RIG NAME  
AND NUMBER

## TYPE OF MATERIAL

☐ Production Water  
☐ Tank Bottoms  
☐ Solids

☐ Drilling Fluids

☒ Contaminated Soil

☐ BS&W Content:

☐ Rinsate  
☐ Jet Out  
☐ Call Out

Description:

RRC or API #

C-133#

VOLUME OF MATERIAL [ ] BBLs.

[ ] YARD

[ ]

AS A CONDITION TO SUNDANCE SERVICES, INC.'S ACCEPTANCE OF THE MATERIALS SHIPPED WITH THIS JOB TICKET, OPERATOR/SHIPPER REPRESENTS AND WARRANTS THAT THE WASTE MATERIAL SHIPPED HERewith IS MATERIAL EXEMPT FROM THE RESOURCE, CONSERVATION AND RECOVERY ACT OF 1976, AS AMENDED FROM TIME TO TIME, 40 U.S.C. § 6901, et seq., THE NM HEALTH AND SAF. CODE § 361.001 et seq., AND REGULATIONS RELATED THERETO, BY VIRTUE OF THE EXEMPTION AFFORDED DRILLING FLUIDS, PRODUCED WATERS, AND OTHER WASTE ASSOCIATED WITH THE EXPLORATION, DEVELOPMENT OR PRODUCTION OF CRUDE OIL OR NATURAL GAS OR GEOTHERMAL ENERGY.



# SUNDANCE SERVICES, Inc.

P.O. Box 1737 Eunice, New Mexico 88231  
(575) 394-2511

TICKET No.

402850

LEASE OPERATOR/SHIPPER/COMPANY:

LEASE NAME:

TRANSPORTER COMPANY:

DATE:

VEHICLE NO:

CHARGE TO:

TIME AM/PM

GENERATOR COMPANY  
MAN'S NAME:

RIG NAME  
AND NUMBER

## TYPE OF MATERIAL

- ☐ Production Water  
☐ Tank Bottoms  
☐ Solids  
☐ Drilling Fluids  
☒ Contaminated Soil  
☐ BS&W Content:  
☐ Rinsate  
☐ Jet Out  
☐ Call Out

Description:

RRC or API #

C-133#

VOLUME OF MATERIAL

[ ] BBLS.

[ ] YARD

[ ]

AS A CONDITION TO SUNDANCE SERVICES, INC.'S ACCEPTANCE OF THE MATERIALS SHIPPED WITH THIS JOB TICKET, OPERATOR/SHIPPER REPRESENTS AND WARRANTS THAT THE WASTE MATERIAL SHIPPED HERewith IS MATERIAL EXEMPT FROM THE RESOURCE, CONSERVATION AND RECOVERY ACT OF 1976, AS AMENDED FROM TIME TO TIME, 40 U.S.C. § 6901, et seq., THE NM HEALTH AND SAF. CODE § 361.001 et seq., AND REGULATIONS RELATED THERETO, BY VIRTUE OF THE EXEMPTION AFFORDED DRILLING FLUIDS, PRODUCED WATERS, AND OTHER WASTE ASSOCIATED WITH THE EXPLORATION, DEVELOPMENT OR PRODUCTION OF CRUDE OIL OR NATURAL GAS OR GEOTHERMAL ENERGY.



# SUNDANCE SERVICES, Inc.

P.O. Box 1737 Eunice, New Mexico 88231  
(575) 394-2511

TICKET No. **402967**

LEASE OPERATOR/SHIPPER/COMPANY: *Larson*

LEASE NAME:

*Sunk Lush's Bitty*

TRANSPORTER COMPANY:

*FPT*

TIME *9:40* AM/PM

DATE: *12-29-86* VEHICLE NO: *127*

GENERATOR COMPANY  
MAN'S NAME:

*P. H. H. H.*

CHARGE TO:

RIG NAME  
AND NUMBER

*Tricycle*

## TYPE OF MATERIAL

- |   |   |                                   |
|---|---|-----------------------------------|
| <input type="checkbox"/> Production Water | <input type="checkbox"/> Drilling Fluids              | <input type="checkbox"/> Rinsate  |
| <input type="checkbox"/> Tank Bottoms     | <input checked="" type="checkbox"/> Contaminated Soil | <input type="checkbox"/> Jet Out  |
| <input type="checkbox"/> Solids           | <input type="checkbox"/> BS&W Content:                | <input type="checkbox"/> Call Out |

Description: *o/d*

RRC or API #

C-133#

VOLUME OF MATERIAL [ ] BBLs. [ ] YARD

[ ]

AS A CONDITION TO SUNDANCE SERVICES, INC.'S ACCEPTANCE OF THE MATERIALS SHIPPED WITH THIS JOB TICKET, OPERATOR/SHIPPER REPRESENTS AND WARRANTS THAT THE WASTE MATERIAL SHIPPED HERewith IS MATERIAL EXEMPT FROM THE RESOURCE, CONSERVATION AND RECOVERY ACT OF 1976, AS AMENDED FROM TIME TO TIME, 40 U.S.C. § 6901, et seq., THE NM HEALTH AND SAF. CODE § 361.001 et seq., AND REGULATIONS RELATED THERETO, BY VIRTUE OF THE EXEMPTION AFFORDED DRILLING FLUIDS, PRODUCED WATERS, AND OTHER WASTE ASSOCIATED WITH THE EXPLORATION, DEVELOPMENT OR PRODUCTION OF CRUDE OIL OR NATURAL GAS OR GEOTHERMAL ENERGY.



# SUNDANCE SERVICES, Inc.

P.O. Box 1737 Eunice, New Mexico 88231  
(575) 394-2511

**TICKET No. 402959**

LEASE OPERATOR/SHIPPER/COMPANY: *Tanya*

LEASE NAME:

TRANSPORTER COMPANY: *Solidus Drilling*

TIME *8:00* AM/PM

DATE: *12-29-14* VEHICLE NO: *137*

GENERATOR COMPANY  
MAN'S NAME:

CHARGE TO: *Tanya*

RIG NAME  
AND NUMBER

## TYPE OF MATERIAL

- ☐ Production Water  
☐ Tank Bottoms  
☐ Solids

- ☐ Drilling Fluids  
☒ Contaminated Soil  
☐ BS&W Content:

- ☐ Rinsate  
☐ Jet Out  
☐ Call Out

Description: *oil*

RRC or API #

C-133#

VOLUME OF MATERIAL [ ] BBLs. \_\_\_\_\_

[ ] YARD \_\_\_\_\_

[ ] \_\_\_\_\_

AS A CONDITION TO SUNDANCE SERVICES, INC.'S ACCEPTANCE OF THE MATERIALS SHIPPED WITH THIS JOB TICKET, OPERATOR/SHIPPER REPRESENTS AND WARRANTS THAT THE WASTE MATERIAL SHIPPED HEREWITH IS MATERIAL EXEMPT FROM THE RESOURCE, CONSERVATION AND RECOVERY ACT OF 1976, AS AMENDED FROM TIME TO TIME, 40 U.S.C. § 6901, et seq., THE NM HEALTH AND SAF. CODE § 361.001 et seq., AND REGULATIONS RELATED THERETO, BY VIRTUE OF THE EXEMPTION AFFORDED DRILLING FLUIDS, PRODUCED WATERS, AND OTHER WASTE ASSOCIATED WITH THE EXPLORATION, DEVELOPMENT OR PRODUCTION OF CRUDE OIL OR NATURAL GAS OR GEOTHERMAL ENERGY.



# SUNDANCE SERVICES, Inc.

P.O. Box 1737 Eunice, New Mexico 88231  
(575) 394-2511

TICKET No.

402984

LEASE OPERATOR/SHIPPER/COMPANY: *Tam*

LEASE NAME: *Sundance Services*

TRANSPORTER COMPANY: *REPT*

TIME *11:09* AM/PM

DATE: *12-29-88* VEHICLE NO: *127*

GENERATOR COMPANY  
MAN'S NAME: *R. Holland*

CHARGE TO: *Tam*

RIG NAME  
AND NUMBER

## TYPE OF MATERIAL

- ☐ Production Water  
☐ Tank Bottoms  
☐ Solids

☐ Drilling Fluids

☒ Contaminated Soil

☐ BS&W Content:

☐ Rinsate

☐ Jet Out

☐ Call Out

Description: *old*

RRC or API #

C-133#

VOLUME OF MATERIAL ☐ BBLs. *14*

☒ YARD

☐

AS A CONDITION TO SUNDANCE SERVICES, INC.'S ACCEPTANCE OF THE MATERIALS SHIPPED WITH THIS JOB TICKET, OPERATOR/SHIPPER REPRESENTS AND WARRANTS THAT THE WASTE MATERIAL SHIPPED HEREWITH IS MATERIAL EXEMPT FROM THE RESOURCE, CONSERVATION AND RECOVERY ACT OF 1976, AS AMENDED FROM TIME TO TIME, 40 U.S.C. § 6901, et seq., THE NM HEALTH AND SAF. CODE § 361.001 et seq., AND REGULATIONS RELATED THERETO, BY VIRTUE OF THE EXEMPTION AFFORDED DRILLING FLUIDS, PRODUCED WATERS, AND OTHER WASTE ASSOCIATED WITH THE EXPLORATION, DEVELOPMENT OR PRODUCTION OF CRUDE OIL OR NATURAL GAS OR GEOTHERMAL ENERGY.



# SUNDANCE SERVICES, Inc.

P.O. Box 1737 Eunice, New Mexico 88231  
(575) 394-2511

TICKET No.

403011

LEASE OPERATOR/SHIPPER/COMPANY: *Targa*

LEASE NAME:

*South Justice Bldg.*

TRANSPORTER COMPANY:

*EPT*

TIME *1:20* AM/PM

DATE: *12-29-14* VEHICLE NO: *127*

GENERATOR COMPANY  
MAN'S NAME

*R. Hultgren*

CHARGE TO:

RIG NAME  
AND NUMBER

*Targa*

## TYPE OF MATERIAL

- ☐ Production Water ☐ Drilling Fluids ☐ Rinsate
- ☐ Tank Bottoms ☒ Contaminated Soil ☐ Jet Out
- ☐ Solids ☐ BS&W Content: ☐ Call Out

Description:

*oil*

RRC or API #

C-133#

VOLUME OF MATERIAL [ ] BBLs. [ ] YARD

[ ]

AS A CONDITION TO SUNDANCE SERVICES, INC.'S ACCEPTANCE OF THE MATERIALS SHIPPED WITH THIS JOB TICKET, OPERATOR/SHIPPER REPRESENTS AND WARRANTS THAT THE WASTE MATERIAL SHIPPED HEREWITH IS MATERIAL EXEMPT FROM THE RESOURCE, CONSERVATION AND RECOVERY ACT OF 1976, AS AMENDED FROM TIME TO TIME, 40 U.S.C. § 6901, et seq., THE NM HEALTH AND SAF. CODE § 361.001 et seq., AND REGULATIONS RELATED THERETO, BY VIRTUE OF THE EXEMPTION AFFORDED DRILLING FLUIDS, PRODUCED WATERS, AND OTHER WASTE ASSOCIATED WITH THE EXPLORATION, DEVELOPMENT OR PRODUCTION OF CRUDE OIL OR NATURAL GAS OR GEOTHERMAL ENERGY.



# SUNDANCE SERVICES, Inc.

P.O. Box 1737 Eunice, New Mexico 88231  
(575) 394-2511

TICKET No.

403028

LEASE OPERATOR/SHIPPER/COMPANY: Targa

LEASE NAME: South Field B-114

TRANSPORTER COMPANY: FPT

TIME 2:54 AM/PM

DATE: 12-29-16 VEHICLE NO: 127

GENERATOR COMPANY  
MAN'S NAME: K. Hollman

CHARGE TO: Targa

RIG NAME  
AND NUMBER

## TYPE OF MATERIAL

- |   |   |                                   |
|---|---|-----------------------------------|
| <input type="checkbox"/> Production Water | <input type="checkbox"/> Drilling Fluids              | <input type="checkbox"/> Rinsate  |
| <input type="checkbox"/> Tank Bottoms     | <input checked="" type="checkbox"/> Contaminated Soil | <input type="checkbox"/> Jet Out  |
| <input type="checkbox"/> Solids           | <input type="checkbox"/> BS&W Content:                | <input type="checkbox"/> Call Out |

Description: oil

RRC or API #

C-133#

VOLUME OF MATERIAL [ ] BBLs.

[ ] YARD

[ ]

AS A CONDITION TO SUNDANCE SERVICES, INC.'S ACCEPTANCE OF THE MATERIALS SHIPPED WITH THIS JOB TICKET, OPERATOR/SHIPPER REPRESENTS AND WARRANTS THAT THE WASTE MATERIAL SHIPPED HEREWITH IS MATERIAL EXEMPT FROM THE RESOURCE, CONSERVATION AND RECOVERY ACT OF 1976, AS AMENDED FROM TIME TO TIME, 40 U.S.C. § 6901, et seq., THE NM HEALTH AND SAF. CODE § 361.001 et seq., AND REGULATIONS RELATED THERETO, BY VIRTUE OF THE EXEMPTION AFFORDED DRILLING FLUIDS, PRODUCED WATERS, AND OTHER WASTE ASSOCIATED WITH THE EXPLORATION, DEVELOPMENT OR PRODUCTION OF CRUDE OIL OR NATURAL GAS OR GEOTHERMAL ENERGY.



# SUNDANCE SERVICES, Inc.

P.O. Box 1737 Eunice, New Mexico 88231  
(575) 394-2511

**TICKET No.** 403278

LEASE OPERATOR/SHIPPER/COMPANY: <i>Targa</i>	
LEASE NAME: <i>South Justice Battery</i>	
TRANSPORTER COMPANY:	TIME: <i>8:26</i> AM/PM
DATE: <i>1-3-17</i>	VEHICLE NO: <i>127</i>
GENERATOR COMPANY MAN'S NAME: <i>P. H. H. H.</i>	
CHARGE TO: <i>Targa</i>	RIG NAME AND NUMBER

## TYPE OF MATERIAL

- |   |   |                                   |
|---|---|-----------------------------------|
| <input type="checkbox"/> Production Water | <input type="checkbox"/> Drilling Fluids              | <input type="checkbox"/> Rinsate  |
| <input type="checkbox"/> Tank Bottoms     | <input checked="" type="checkbox"/> Contaminated Soil | <input type="checkbox"/> Jet Out  |
| <input type="checkbox"/> Solids           | <input type="checkbox"/> BS&W Content:                | <input type="checkbox"/> Call Out |

Description: *o/d*

RRC or API #

C-133#

VOLUME OF MATERIAL [ ] BBLs. : *14* : [ ] YARD : [ ]

AS A CONDITION TO SUNDANCE SERVICES, INC.'S ACCEPTANCE OF THE MATERIALS SHIPPED WITH THIS JOB TICKET, OPERATOR/SHIPPER REPRESENTS AND WARRANTS THAT THE WASTE MATERIAL SHIPPED HEREWITH IS MATERIAL EXEMPT FROM THE RESOURCE, CONSERVATION AND RECOVERY ACT OF 1976, AS AMENDED FROM TIME TO TIME, 40 U.S.C. § 6901, et seq., THE NM HEALTH AND SAF. CODE § 361.001 et seq., AND REGULATIONS RELATED THERETO, BY VIRTUE OF THE EXEMPTION AFFORDED DRILLING FLUIDS, PRODUCED WATERS, AND OTHER WASTE ASSOCIATED WITH THE EXPLORATION, DEVELOPMENT OR PRODUCTION OF CRUDE OIL OR NATURAL GAS OR GEOTHERMAL ENERGY.



# SUNDANCE SERVICES, Inc.

P.O. Box 1737 Eunice, New Mexico 88231  
(575) 394-2511

TICKET No.

03285

LEASE OPERATOR/SHIPPER/COMPANY:

LEASE NAME:

TRANSPORTER COMPANY:

DATE:

TIME

GENERATOR COMPANY  
MAN'S NAME:

CHARGE TO:

RIG NAME  
AND NUMBER

## TYPE OF MATERIAL

- ☐ Production Water ☐ Drilling Fluids ☐ Rinsate  
☐ Tank Bottoms ☒ Contaminated Soil ☐ Jet Out  
☐ Solids ☐ BS&W Content: ☐ Call Out

Description:

RRC or API #

C-133#

VOLUME OF MATERIAL ☐ BBLs.

☒ YARD

☐

AS A CONDITION TO SUNDANCE SERVICES, INC.'S ACCEPTANCE OF THE MATERIALS SHIPPED WITH THIS JOB TICKET, OPERATOR/SHIPPER REPRESENTS AND WARRANTS THAT THE WASTE MATERIAL SHIPPED HEREWITH IS MATERIAL EXEMPT FROM THE RESOURCE, CONSERVATION AND RECOVERY ACT OF 1976, AS AMENDED FROM TIME TO TIME, 40 U.S.C. § 6901, et seq., THE NM HEALTH AND SAF. CODE § 361.001 et seq., AND REGULATIONS RELATED THERETO, BY VIRTUE OF THE EXEMPTION AFFORDED DRILLING FLUIDS, PRODUCED WATERS, AND OTHER WASTE ASSOCIATED WITH THE EXPLORATION, DEVELOPMENT OR PRODUCTION OF CRUDE OIL OR NATURAL GAS OR GEOTHERMAL ENERGY.



# SUNDANCE SERVICES, Inc.

P.O. Box 1737 Eunice, New Mexico 88231  
(575) 394-2511

TICKET No.

403294

LEASE OPERATOR/SHIPPER/COMPANY:

LEASE NAME:

TRANSPORTER COMPANY:

DATE:

VEHICLE NO:

TIME

AM/PM

GENERATOR COMPANY  
MAN'S NAME:

CHARGE TO:

RIG NAME  
AND NUMBER

## TYPE OF MATERIAL

- |   |   |                                   |
|---|---|-----------------------------------|
| <input type="checkbox"/> Production Water | <input type="checkbox"/> Drilling Fluids              | <input type="checkbox"/> Rinsate  |
| <input type="checkbox"/> Tank Bottoms     | <input checked="" type="checkbox"/> Contaminated Soil | <input type="checkbox"/> Jet Out  |
| <input type="checkbox"/> Solids           | <input type="checkbox"/> BS&W Content:                | <input type="checkbox"/> Call Out |

Description:

RRC or API #

C-133#

VOLUME OF MATERIAL [ ] BBLS.

[ ] YARD

[ ]

AS A CONDITION TO SUNDANCE SERVICES, INC.'S ACCEPTANCE OF THE MATERIALS SHIPPED WITH THIS JOB TICKET, OPERATOR/SHIPPER REPRESENTS AND WARRANTS THAT THE WASTE MATERIAL SHIPPED HEREWITH IS MATERIAL EXEMPT FROM THE RESOURCE, CONSERVATION AND RECOVERY ACT OF 1976, AS AMENDED FROM TIME TO TIME, 40 U.S.C. § 6901, et seq., THE NM HEALTH AND SAF. CODE § 361.001 et seq., AND REGULATIONS RELATED THERETO, BY VIRTUE OF THE EXEMPTION AFFORDED DRILLING FLUIDS, PRODUCED WATERS, AND OTHER WASTE ASSOCIATED WITH THE EXPLORATION, DEVELOPMENT OR PRODUCTION OF CRUDE OIL OR NATURAL GAS OR GEOTHERMAL ENERGY.



# SUNDANCE SERVICES, Inc.

P.O. Box 1737 Eunice, New Mexico 88231  
(575) 394-2511

TICKET No. **403313**

LEASE OPERATOR/SHIPPER/COMPANY:

LEASE NAME:

TRANSPORTER COMPANY:

TIME AM/PM

DATE: **1-3-17** VEHICLE NO: **127**

GENERATOR COMPANY  
MAN'S NAME:

CHARGE TO:

RIG NAME  
AND NUMBER

## TYPE OF MATERIAL

- |   |  |                                   |
|---|--|-----------------------------------|
| <input type="checkbox"/> Production Water | <input type="checkbox"/> Drilling Fluids   | <input type="checkbox"/> Rinsate  |
| <input type="checkbox"/> Tank Bottoms     | <input type="checkbox"/> Contaminated Soil | <input type="checkbox"/> Jet Out  |
| <input type="checkbox"/> Solids           | <input type="checkbox"/> BS&W Content:     | <input type="checkbox"/> Call Out |

Description:

RRC or API #

C-133#

VOLUME OF MATERIAL [ ] BBLs. :

[ ] YARD :

[ ]

AS A CONDITION TO SUNDANCE SERVICES, INC.'S ACCEPTANCE OF THE MATERIALS SHIPPED WITH THIS JOB TICKET, OPERATOR/SHIPPER REPRESENTS AND WARRANTS THAT THE WASTE MATERIAL SHIPPED HEREWITH IS MATERIAL EXEMPT FROM THE RESOURCE, CONSERVATION AND RECOVERY ACT OF 1976, AS AMENDED FROM TIME TO TIME, 40 U.S.C. § 6901, et seq., THE NM HEALTH AND SAF. CODE § 361.001 et seq., AND REGULATIONS RELATED THERETO, BY VIRTUE OF THE EXEMPTION AFFORDED DRILLING FLUIDS, PRODUCED WATERS, AND OTHER WASTE ASSOCIATED WITH THE EXPLORATION, DEVELOPMENT OR PRODUCTION OF CRUDE OIL OR NATURAL GAS OR GEOTHERMAL ENERGY.



# SUNDANCE SERVICES, Inc.

P.O. Box 1737 Eunice, New Mexico 88231  
(575) 394-2511

TICKET No. **403359**

LEASE OPERATOR/SHIPPER/COMPANY: *TANNA*

LEASE NAME: *South Texas Bldg.*

TRANSPORTER COMPANY: *EPI*

TIME *8:22* AM/PM

DATE: *12-14-77* VEHICLE NO: *137*

GENERATOR COMPANY  
MAN'S NAME: *Peter Halliday*

CHARGE TO: *TANNA*

RIG NAME  
AND NUMBER

## TYPE OF MATERIAL

- |   |   |                                   |
|---|---|-----------------------------------|
| <input type="checkbox"/> Production Water | <input type="checkbox"/> Drilling Fluids              | <input type="checkbox"/> Rinsate  |
| <input type="checkbox"/> Tank Bottoms     | <input checked="" type="checkbox"/> Contaminated Soil | <input type="checkbox"/> Jet Out  |
| <input type="checkbox"/> Solids           | <input type="checkbox"/> BS&W Content:                | <input type="checkbox"/> Call Out |

Description: *o/d*

RRC or API #

C-133#

VOLUME OF MATERIAL [ ] BBLs. [ ] YARD

[ ]

AS A CONDITION TO SUNDANCE SERVICES, INC.'S ACCEPTANCE OF THE MATERIALS SHIPPED WITH THIS JOB TICKET, OPERATOR/SHIPPER REPRESENTS AND WARRANTS THAT THE WASTE MATERIAL SHIPPED HEREWITH IS MATERIAL EXEMPT FROM THE RESOURCE, CONSERVATION AND RECOVERY ACT OF 1976, AS AMENDED FROM TIME TO TIME, 40 U.S.C. § 6901, et seq., THE NM HEALTH AND SAF. CODE § 361.001 et seq., AND REGULATIONS RELATED THERETO, BY VIRTUE OF THE EXEMPTION AFFORDED DRILLING FLUIDS, PRODUCED WATERS, AND OTHER WASTE ASSOCIATED WITH THE EXPLORATION, DEVELOPMENT OR PRODUCTION OF CRUDE OIL OR NATURAL GAS OR GEOTHERMAL ENERGY.



# SUNDANCE SERVICES, Inc.

P.O. Box 1737 Eunice, New Mexico 88231  
(575) 394-2511

TICKET No. **403370**

LEASE OPERATOR/SHIPPER/COMPANY:

LEASE NAME:

TRANSPORTER COMPANY:

DATE:

VEHICLE NO:

TIME

GENERATOR COMPANY  
MAN'S NAME:

CHARGE TO:

RIG NAME  
AND NUMBER

## TYPE OF MATERIAL

- ☐ Production Water ☐ Drilling Fluids ☐ Rinsate
- ☐ Tank Bottoms ☒ Contaminated Soil ☐ Jet Out
- ☐ Solids ☐ BS&W Content: ☐ Call Out

Description:

RRC or API #

C-133#

VOLUME OF MATERIAL [ ] BBLs.

[ ] YARD

[ ]

AS A CONDITION TO SUNDANCE SERVICES, INC.'S ACCEPTANCE OF THE MATERIALS SHIPPED WITH THIS JOB TICKET, OPERATOR/SHIPPER REPRESENTS AND WARRANTS THAT THE WASTE MATERIAL SHIPPED HERewith IS MATERIAL EXEMPT FROM THE RESOURCE, CONSERVATION AND RECOVERY ACT OF 1976, AS AMENDED FROM TIME TO TIME, 40 U.S.C. § 6901, et seq., THE NM HEALTH AND SAF. CODE § 361.001 et seq., AND REGULATIONS RELATED THERETO, BY VIRTUE OF THE EXEMPTION AFFORDED DRILLING FLUIDS, PRODUCED WATERS, AND OTHER WASTE ASSOCIATED WITH THE EXPLORATION, DEVELOPMENT OR PRODUCTION OF CRUDE OIL OR NATURAL GAS OR GEOTHERMAL ENERGY.

## **APPENDIX B**

### **Photographs**

**PHOTOGRAPHS**  
**(R. Holland – Targa)**



Excavation at 4" Down Leg Viewing West



Excavation at Spray Area Viewing South

**PHOTOGRAPHS**  
**(R. Holland – Targa)**



Excavation at Spray Area Viewing North



Excavation at Spray Area Viewing North

## **APPENDIX C**

### **Laboratory Reports**



PHONE (575) 393-2326 ° 101 E. MARLAND ° HOBBS, NM 88240

---

January 05, 2017

Roger Holland

TARGA RESOURCES - EUNICE

PO Box 1929

Eunice, NM 88231

RE: SOUTH JUSTIS REPORTABLE

Enclosed are the results of analyses for samples received by the laboratory on 01/03/17 15:40.

Cardinal Laboratories is accredited through Texas NELAP under certificate number T104704398-16-8. Accreditation applies to drinking water, non-potable water and solid and chemical materials. All accredited analytes are denoted by an asterisk (\*). For a complete list of accredited analytes and matrices visit the TCEQ website at [www.tceq.texas.gov/field/qa/lab\\_accred\\_certif.html](http://www.tceq.texas.gov/field/qa/lab_accred_certif.html).

Cardinal Laboratories is accredited through the State of Colorado Department of Public Health and Environment for:

Method EPA 552.2	Haloacetic Acids (HAA-5)
Method EPA 524.2	Total Trihalomethanes (TTHM)
Method EPA 524.4	Regulated VOCs (V1, V2, V3)

Accreditation applies to public drinking water matrices.

This report meets NELAP requirements and is made up of a cover page, analytical results, and a copy of the original chain-of-custody. If you have any questions concerning this report, please feel free to contact me.

Sincerely,

A handwritten signature in black ink that reads "Coley D. Keene". The signature is written in a cursive, flowing style.

Celey D. Keene

Lab Director/Quality Manager

**Analytical Results For:**

TARGA RESOURCES - EUNICE  
Roger Holland  
PO Box 1929  
Eunice NM, 88231  
Fax To: (575) 394-1514

Received:	01/03/2017	Sampling Date:	01/03/2017
Reported:	01/05/2017	Sampling Type:	Soil
Project Name:	SOUTH JUSTIS REPORTABLE	Sampling Condition:	Cool & Intact
Project Number:	NONE GIVEN	Sample Received By:	Jodi Henson
Project Location:	EUNICE FIELD		

**Sample ID: NORTH (H700006-01)**

Chloride, SM4500Cl-B		mg/kg		Analyzed By: AC					
Analyte	Result	Reporting Limit	Analyzed	Method Blank	BS	% Recovery	True Value QC	RPD	Qualifier
Chloride	32.0	16.0	01/04/2017	ND	416	104	400	0.00	
TPH 8015M		mg/kg		Analyzed By: MS					
Analyte	Result	Reporting Limit	Analyzed	Method Blank	BS	% Recovery	True Value QC	RPD	Qualifier
GRO C6-C10	<10.0	10.0	01/04/2017	ND	183	91.7	200	1.90	
DRO >C10-C28	<10.0	10.0	01/04/2017	ND	182	90.8	200	2.13	

Surrogate: 1-Chlorooctane 83.1 % 35-147  
Surrogate: 1-Chlorooctadecane 85.9 % 28-171

**Sample ID: SOUTH (H700006-02)**

Chloride, SM4500Cl-B		mg/kg		Analyzed By: AC					
Analyte	Result	Reporting Limit	Analyzed	Method Blank	BS	% Recovery	True Value QC	RPD	Qualifier
Chloride	96.0	16.0	01/04/2017	ND	416	104	400	0.00	
TPH 8015M		mg/kg		Analyzed By: MS					
Analyte	Result	Reporting Limit	Analyzed	Method Blank	BS	% Recovery	True Value QC	RPD	Qualifier
GRO C6-C10	<10.0	10.0	01/04/2017	ND	183	91.7	200	1.90	
DRO >C10-C28	<10.0	10.0	01/04/2017	ND	182	90.8	200	2.13	

Surrogate: 1-Chlorooctane 89.5 % 35-147  
Surrogate: 1-Chlorooctadecane 103 % 28-171

Cardinal Laboratories

\*=Accredited Analyte

PLEASE NOTE: Liability and Damages. Cardinal's liability and client's exclusive remedy for any claim arising, whether based in contract or tort, shall be limited to the amount paid by client for analyses. All claims, including those for negligence and any other cause whatsoever shall be deemed waived unless made in writing and received by Cardinal within thirty (30) days after completion of the applicable service. In no event shall Cardinal be liable for incidental or consequential damages, including, without limitation, business interruptions, loss of use, or loss of profits incurred by client, its subsidiaries, affiliates or successors arising out of or related to the performance of the services hereunder by Cardinal, regardless of whether such claim is based upon any of the above stated reasons or otherwise. Results relate only to the samples identified above. This report shall not be reproduced except in full with written approval of Cardinal Laboratories.



Celey D. Keene, Lab Director/Quality Manager

**Analytical Results For:**

 TARGA RESOURCES - EUNICE  
 Roger Holland  
 PO Box 1929  
 Eunice NM, 88231  
 Fax To: (575) 394-1514

Received:	01/03/2017	Sampling Date:	01/03/2017
Reported:	01/05/2017	Sampling Type:	Soil
Project Name:	SOUTH JUSTIS REPORTABLE	Sampling Condition:	Cool & Intact
Project Number:	NONE GIVEN	Sample Received By:	Jodi Henson
Project Location:	EUNICE FIELD		

**Sample ID: EAST (H700006-03)**

Chloride, SM4500Cl-B		mg/kg		Analyzed By: AC					
Analyte	Result	Reporting Limit	Analyzed	Method Blank	BS	% Recovery	True Value QC	RPD	Qualifier
Chloride	240	16.0	01/04/2017	ND	416	104	400	0.00	
TPH 8015M		mg/kg		Analyzed By: MS					
Analyte	Result	Reporting Limit	Analyzed	Method Blank	BS	% Recovery	True Value QC	RPD	Qualifier
GRO C6-C10	<10.0	10.0	01/04/2017	ND	183	91.7	200	1.90	
DRO >C10-C28	<10.0	10.0	01/04/2017	ND	182	90.8	200	2.13	
Surrogate: 1-Chlorooctane		85.2 %	35-147						
Surrogate: 1-Chlorooctadecane		90.4 %	28-171						

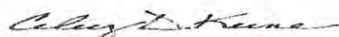
**Sample ID: WEST (H700006-04)**

Chloride, SM4500Cl-B		mg/kg		Analyzed By: AC					
Analyte	Result	Reporting Limit	Analyzed	Method Blank	BS	% Recovery	True Value QC	RPD	Qualifier
Chloride	176	16.0	01/04/2017	ND	416	104	400	0.00	
TPH 8015M		mg/kg		Analyzed By: MS					
Analyte	Result	Reporting Limit	Analyzed	Method Blank	BS	% Recovery	True Value QC	RPD	Qualifier
GRO C6-C10	<10.0	10.0	01/04/2017	ND	183	91.7	200	1.90	
DRO >C10-C28	<10.0	10.0	01/04/2017	ND	182	90.8	200	2.13	
Surrogate: 1-Chlorooctane		95.6 %	35-147						
Surrogate: 1-Chlorooctadecane		106 %	28-171						

Cardinal Laboratories

\* = Accredited Analyte

PLEASE NOTE: Liability and Damages. Cardinal's liability and client's exclusive remedy for any claim arising, whether based in contract or tort, shall be limited to the amount paid by client for analyses. All claims, including those for negligence and any other cause whatsoever shall be deemed waived unless made in writing and received by Cardinal within thirty (30) days after completion of the applicable service. In no event shall Cardinal be liable for incidental or consequential damages, including, without limitation, business interruptions, loss of use, or loss of profits incurred by client, its subsidiaries, affiliates or successors arising out of or related to the performance of the services hereunder by Cardinal, regardless of whether such claim is based upon any of the above stated reasons or otherwise. Results relate only to the samples identified above. This report shall not be reproduced except in full with written approval of Cardinal Laboratories.



Celey D. Keene, Lab Director/Quality Manager

**Analytical Results For:**

TARGA RESOURCES - EUNICE  
Roger Holland  
PO Box 1929  
Eunice NM, 88231  
Fax To: (575) 394-1514

Received:	01/03/2017	Sampling Date:	01/03/2017
Reported:	01/05/2017	Sampling Type:	Soil
Project Name:	SOUTH JUSTIS REPORTABLE	Sampling Condition:	Cool & Intact
Project Number:	NONE GIVEN	Sample Received By:	Jodi Henson
Project Location:	EUNICE FIELD		

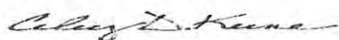
**Sample ID: BOTTOM (H700006-05)**

Chloride, SM4500Cl-B			mg/kg							
			Analyzed By: AC							
Analyte	Result	Reporting Limit	Analyzed	Method Blank	BS	% Recovery	True Value QC	RPD	Qualifier	
<b>Chloride</b>	<b>304</b>	16.0	01/04/2017	ND	416	104	400	0.00		
TPH 8015M			mg/kg							
			Analyzed By: MS							
Analyte	Result	Reporting Limit	Analyzed	Method Blank	BS	% Recovery	True Value QC	RPD	Qualifier	
GRO C6-C10	<10.0	10.0	01/04/2017	ND	206	103	200	3.11		
<b>DRO &gt;C10-C28</b>	<b>23.3</b>	10.0	01/04/2017	ND	225	113	200	2.65		
Surrogate: 1-Chlorooctane	87.3 %	35-147								
Surrogate: 1-Chlorooctadecane	103 %	28-171								

Cardinal Laboratories

\*=Accredited Analyte

PLEASE NOTE: Liability and Damages. Cardinal's liability and client's exclusive remedy for any claim arising, whether based in contract or tort, shall be limited to the amount paid by client for analyses. All claims, including those for negligence and any other cause whatsoever shall be deemed waived unless made in writing and received by Cardinal within thirty (30) days after completion of the applicable service. In no event shall Cardinal be liable for incidental or consequential damages, including, without limitation, business interruptions, loss of use, or loss of profits incurred by client, its subsidiaries, affiliates or successors arising out of or related to the performance of the services hereunder by Cardinal, regardless of whether such claim is based upon any of the above stated reasons or otherwise. Results relate only to the samples identified above. This report shall not be reproduced except in full with written approval of Cardinal Laboratories.



Celey D. Keene, Lab Director/Quality Manager

**Notes and Definitions**

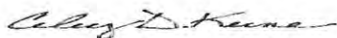
ND	Analyte NOT DETECTED at or above the reporting limit
RPD	Relative Percent Difference
**	Samples not received at proper temperature of 6°C or below.
***	Insufficient time to reach temperature.
-	Chloride by SM4500Cl-B does not require samples be received at or below 6°C Samples reported on an as received basis (wet) unless otherwise noted on report

---

Cardinal Laboratories

\*=Accredited Analyte

PLEASE NOTE: Liability and Damages. Cardinal's liability and client's exclusive remedy for any claim arising, whether based in contract or tort, shall be limited to the amount paid by client for analyses. All claims, including those for negligence and any other cause whatsoever shall be deemed waived unless made in writing and received by Cardinal within thirty (30) days after completion of the applicable service. In no event shall Cardinal be liable for incidental or consequential damages, including, without limitation, business interruptions, loss of use, or loss of profits incurred by client, its subsidiaries, affiliates or successors arising out of or related to the performance of the services hereunder by Cardinal, regardless of whether such claim is based upon any of the above stated reasons or otherwise. Results relate only to the samples identified above. This report shall not be reproduced except in full with written approval of Cardinal Laboratories.



---

Celey D. Keene, Lab Director/Quality Manager



CHAIN-OF-CUSTODY AND ANALYSIS REQUEST

Page 6 of 6

January 09, 2017

Roger Holland

TARGA RESOURCES - EUNICE

PO Box 1929

Eunice, NM 88231

RE: SOUTH JUSTIS REPORTABLE

Enclosed are the results of analyses for samples received by the laboratory on 01/06/17 10:20.

Cardinal Laboratories is accredited through Texas NELAP under certificate number T104704398-16-8. Accreditation applies to drinking water, non-potable water and solid and chemical materials. All accredited analytes are denoted by an asterisk (\*). For a complete list of accredited analytes and matrices visit the TCEQ website at [www.tceq.texas.gov/field/qa/lab\\_accred\\_certif.html](http://www.tceq.texas.gov/field/qa/lab_accred_certif.html).

Cardinal Laboratories is accredited through the State of Colorado Department of Public Health and Environment for:

Method EPA 552.2	Haloacetic Acids (HAA-5)
Method EPA 524.2	Total Trihalomethanes (TTHM)
Method EPA 524.4	Regulated VOCs (V1, V2, V3)

Accreditation applies to public drinking water matrices.

This report meets NELAP requirements and is made up of a cover page, analytical results, and a copy of the original chain-of-custody. If you have any questions concerning this report, please feel free to contact me.

Sincerely,



Celey D. Keene

Lab Director/Quality Manager

**Analytical Results For:**

 TARGA RESOURCES - EUNICE  
 Roger Holland  
 PO Box 1929  
 Eunice NM, 88231  
 Fax To: (575) 394-1514

Received:	01/06/2017	Sampling Date:	01/06/2017
Reported:	01/09/2017	Sampling Type:	Soil
Project Name:	SOUTH JUSTIS REPORTABLE	Sampling Condition:	Cool & Intact
Project Number:	RE-SAMPLE	Sample Received By:	Jodi Henson
Project Location:	EUNICE FIELD		

**Sample ID: BOTTOM (H700048-01)**

Chloride, SM4500Cl-B		mg/kg		Analyzed By: AC					
Analyte	Result	Reporting Limit	Analyzed	Method Blank	BS	% Recovery	True Value QC	RPD	Qualifier
<b>Chloride</b>	<b>48.0</b>	16.0	01/06/2017	ND	416	104	400	0.00	
TPH 8015M		mg/kg		Analyzed By: MS					
Analyte	Result	Reporting Limit	Analyzed	Method Blank	BS	% Recovery	True Value QC	RPD	Qualifier
GRO C6-C10	<10.0	10.0	01/06/2017	ND	218	109	200	2.08	
DRO >C10-C28	<10.0	10.0	01/06/2017	ND	231	115	200	0.483	
Surrogate: 1-Chlorooctane	96.8 %	35-147							
Surrogate: 1-Chlorooctadecane	101 %	28-171							

Cardinal Laboratories

\*=Accredited Analyte

PLEASE NOTE: Liability and Damages. Cardinal's liability and client's exclusive remedy for any claim arising, whether based in contract or tort, shall be limited to the amount paid by client for analyses. All claims, including those for negligence and any other cause whatsoever shall be deemed waived unless made in writing and received by Cardinal within thirty (30) days after completion of the applicable service. In no event shall Cardinal be liable for incidental or consequential damages, including, without limitation, business interruptions, loss of use, or loss of profits incurred by client, its subsidiaries, affiliates or successors arising out of or related to the performance of the services hereunder by Cardinal, regardless of whether such claim is based upon any of the above stated reasons or otherwise. Results relate only to the samples identified above. This report shall not be reproduced except in full with written approval of Cardinal Laboratories.



Celey D. Keene, Lab Director/Quality Manager

**Notes and Definitions**

QR-03	The RPD value for the sample duplicate or MS/MSD was outside of QC acceptance limits due to matrix interference. QC batch accepted based on LCS and/or LCSD recovery and/or RPD values.
ND	Analyte NOT DETECTED at or above the reporting limit
RPD	Relative Percent Difference
**	Samples not received at proper temperature of 6°C or below.
***	Insufficient time to reach temperature.
-	Chloride by SM4500Cl-B does not require samples be received at or below 6°C Samples reported on an as received basis (wet) unless otherwise noted on report

---

Cardinal Laboratories

\*=Accredited Analyte

PLEASE NOTE: Liability and Damages. Cardinal's liability and client's exclusive remedy for any claim arising, whether based in contract or tort, shall be limited to the amount paid by client for analyses. All claims, including those for negligence and any other cause whatsoever shall be deemed waived unless made in writing and received by Cardinal within thirty (30) days after completion of the applicable service. In no event shall Cardinal be liable for incidental or consequential damages, including, without limitation, business interruptions, loss of use, or loss of profits incurred by client, its subsidiaries, affiliates or successors arising out of or related to the performance of the services hereunder by Cardinal, regardless of whether such claim is based upon any of the above stated reasons or otherwise. Results relate only to the samples identified above. This report shall not be reproduced except in full with written approval of Cardinal Laboratories.



---

Celey D. Keene, Lab Director/Quality Manager



## **APPENDIX D**

**Initial C-141**

## Weaver, Crystal, EMNRD

---

**From:** Lynch, Kristen, EMNRD  
**Sent:** Tuesday, December 20, 2016 2:33 PM  
**To:** Patterson, Heather, EMNRD; Weaver, Crystal, EMNRD; Bratcher, Mike, EMNRD  
**Subject:** Fw: Targa C 141 Legacy event  
**Attachments:** Eunice C-141121816 Legacy.pdf

---

**From:** Woodell, Rebecca F. <RebeccaWoodell@targaresources.com>  
**Sent:** Tuesday, December 20, 2016 10:27 AM  
**To:** Lynch, Kristen, EMNRD  
**Cc:** Klein, Cindy S.  
**Subject:** FW: Targa C 141 Legacy event

Please find attached an initial C 141 report for Targa Resources. Forwarding per Jamie Keyes. If you have any questions please call 575.631.7085. Thank You!!

---

**From:** Woodell, Rebecca F.  
**Sent:** Tuesday, December 20, 2016 10:04 AM  
**To:** 'Jamie.Keyes@state.nm.us'; 'marka.whitaker@state.nm.us'  
**Cc:** 'Klein, Cindy D. (CynthiaKlein@targaresources.com)'; Little, Bill E.  
**Subject:** Targa C 141 Legacy event  
**Importance:** High

Please find attached the initial C 141 for the 12/18/16 Targa Resources leak, verbal notification Monday, 12/19/16 to Mark Whitaker's desk by Rebecca Woodell. The final C 141 will be submitted upon completion of the cleanup of site.

Thank You,

Rebecca Woodell  
Targa Resources  
ES&H Specialist Eunice Area  
PO Box 1909  
Eunice, NM 88231  
575.394.2534.239 Office 575.631.7085 Cell  
[rwoodell@targaresources.com](mailto:rwoodell@targaresources.com)

---

This email (including any attachments and accompanying emails) may contain proprietary and confidential information. If you are not the intended recipient, please telephone the sender and immediately delete this e-mail (including any attachments and accompanying emails). Please do not replicate, disclose, distribute, forward, or retain this e-mail or any part of this email. Thank you.

# NM OIL CONSERVATION

ARTESIA DISTRICT

Form C-141  
Revised August 8, 2011

District I  
1625 N. French Dr., Hobbs, NM 88240  
District II  
811 S. First St., Artesia, NM 88210  
District III  
1000 Rio Brazos Road, Aztec, NM 87410  
District IV  
1220 S. St. Francis Dr., Santa Fe, NM 87505

State of New Mexico  
Energy Minerals and Natural Resources

Oil Conservation Division  
1220 South St. Francis Dr.  
Santa Fe, NM 87505

DEC 20 2016

Submit 1 Copy to appropriate District Office in  
accordance with 19.15.29 NMAC.  
**RECEIVED**

## **PAB1636434584 Release Notification and Corrective Action**

**NAB163643555A**

### **OPERATOR**

☒ Initial Report ☐ Final Report

Name of Company: Targa Midstream Services <b>84650</b>	Contact: Bill Little
Address: PO Box 1909 Eunice, NM 88231	Telephone No.: 575.631.7099
Facility Name <b>Eunice Cattle Ranch</b>	Facility Type <b>pipeline - low pressure</b>
Surface Owner Legacy <b>System</b>	Mineral Owner
API No.	

**Grobs Field**

### **LOCATION OF RELEASE**

Unit Letter E	Section 24	Township 25S	Range 37E	Feet from the	North/South Line	Feet from the	East/West Line	County Lea
------------------	---------------	-----------------	--------------	---------------	------------------	---------------	----------------	---------------

Latitude 32.11935 Longitude 103.12438

### **NATURE OF RELEASE**

Type of Release Liquid	Volume of Release 10 BBLS of liquid	Volume Recovered
Source of Release leak on a 4" steel down leg	Date and Hour of Occurrence 12/18/16 8:00 AM	Date and Hour of Discovery 12/18/16 10:00 AM Targa notified
Was Immediate Notice Given? <input type="checkbox"/> Yes <input checked="" type="checkbox"/> No <input checked="" type="checkbox"/> Not Required	If YES, To Whom?	
By Whom?	Date and Hour	
Was a Watercourse Reached? <input type="checkbox"/> Yes <input checked="" type="checkbox"/> No	If YES, Volume Impacting the Watercourse.	

If a Watercourse was Impacted, Describe Fully.\*

Describe Cause of Problem and Remedial Action Taken.\*

4" steel down leg developed a leak due to internal corrosion forcing liquid to surface. Line was shut in isolating/stopping leak.

Describe Area Affected and Cleanup Action Taken.\*

The area affected is in the process of being excavated, sampled, and contaminated soil removed to an approved OCD Landfill. New soil will be hauled to backfill. The down leg is being repaired.

*will take samples before closure*

I hereby certify that the information given above is true and complete to the best of my knowledge and understand that pursuant to NMOCD rules and regulations all operators are required to report and/or file certain release notifications and perform corrective actions for releases which may endanger public health or the environment. The acceptance of a C-141 report by the NMOCD marked as "Final Report" does not relieve the operator of liability should their operations have failed to adequately investigate and remediate contamination that pose a threat to ground water, surface water, human health or the environment. In addition, NMOCD acceptance of a C-141 report does not relieve the operator of responsibility for compliance with any other federal, state, or local laws and/or regulations.

Signature: <i>Bill Little</i>	<b>OIL CONSERVATION DIVISION</b>	
Printed Name: Bill Little	Approved by Environmental Specialist: <i>[Signature]</i>	
Title: Area Manager	Approval Date: <i>12/29/16</i>	Expiration Date: <i>N/A</i>
E-mail Address: blittle@targaresources.com	Conditions of Approval: <i>see attached</i>	Attached <input checked="" type="checkbox"/>
Date: <i>12-19-16</i>	Phone: 575.631.7099	

\* Attach Additional Sheets If Necessary

**IRP-4532**

Operator/Responsible Party,

The OCD has received the form C-141 you provided on **12/20/16** regarding an unauthorized release. The information contained on that form has been entered into our incident database and remediation case number IRP 4538 has been assigned. **Please refer to this case number in all future correspondence.**

It is the Division's obligation under both the Oil & Gas Act and Water Quality Act to provide for the protection of public health and the environment. Our regulations (19.15.29.11 NMAC) state the following,

*The responsible person shall complete division-approved corrective action for releases that endanger public health or the environment. The responsible person shall address releases in accordance with a remediation plan submitted to and approved by the division or with an abatement plan submitted in accordance with 19.15.30 NMAC. [emphasis added]*

Release characterization is the first phase of corrective action unless the release is ongoing or is of limited volume and all impacts can be immediately addressed. Proper and cost-effective remediation typically cannot occur without adequate characterization of the impacts of any release. Furthermore, the Division has the ability to impose reasonable conditions upon the efforts it oversees. **As such, the Division is requiring a workplan for the characterization of impacts associated with this release be submitted to the OCD District II office in Artesia on or before 2/1/17 and when the release characterization workplan is approved, there will be an associated deadline for submittal of the resultant investigation report. Modest extensions of time to these deadlines may be granted, but only with acceptable justification.**

The goals of a characterization effort are: 1) determination of the lateral and vertical extents along with the magnitude of soil contamination. 2) determine if groundwater or surface waters have been impacted. 3) If groundwater or surface waters have been impacted, what are the extents and magnitude of that impact. 4) The characterization of any other adverse impacts that may have occurred (examples: impacts on vegetation, impacts on wildlife, air quality, loss of use of property, etc.). To meet these goals as quickly as possible, the following items must, at a minimum, be addressed in the release characterization workplan and subsequent reporting:

- Horizontal delineation of soil impacts in each of the four cardinal compass directions. Adsorbed soil contamination must be characterized for the following constituents using the associated laboratory methods: benzene, toluene, ethylbenzene, and total xylenes by either Method 8260 or 8021, total petroleum hydrocarbons by Method 8015 extended range (GRO+DRO+MRO; C<sub>6</sub> thru C<sub>36</sub>), and for chloride by Method 300. This is not an exclusive list of potential contaminants. Analyzed parameters should be modified based on the nature of the released substance(s). Soil sampling must be both within the impacted area and beyond.
- Vertical delineation of soil impacts. Adsorbed soil contamination must be characterized for the following constituents using the associated laboratory methods: benzene, toluene, ethylbenzene, and total xylenes by either Method 8260 or 8021, total petroleum hydrocarbons by Method 8015 extended range (GRO+DRO+MRO; C<sub>6</sub> thru C<sub>36</sub>), and for chloride by Method 300. As above, this is not an exclusive list of potential contaminants and can be modified. Vertical characterization samples should be taken at depth intervals no greater than five feet apart. Lithologic description of encountered soils must also be provided. At least ten vertical feet of soils with contaminant concentrations at or below these values must be demonstrated as existing above the water table.
- Nominal detection limits for field and laboratory analyses must be provided.
- Composite sampling is not generally allowed.
- Field screening and assessment techniques are acceptable (headspace, titration, EC [include algorithm for validation purposes], EM, etc.), but the sampling and assay procedures must be clearly defined. Copies of field notes are highly desirable. A statistically significant set of split samples must be submitted for confirmatory laboratory analysis, including the laterally farthest and vertically deepest sets of soil samples. Make sure there are at least two soil samples submitted

for laboratory analysis from each borehole or test pit (highest observed contamination and deepest depth investigated). Copies of the actual laboratory results must be provided including chain of custody documentation.

- Probable depth to shallowest protectable groundwater and lateral distance to nearest surface water. If there is an estimate of groundwater depth, the information used to arrive at that estimate must be provided. If there is a reasonable assumption that the depth to protectable water is 50 feet or less, the responsible party should anticipate the need for at least one groundwater monitoring well to be installed in the area of likely maximum contamination.

- If groundwater contamination is encountered, an additional investigation workplan may be required to determine the extents of that contamination. Groundwater and/or surface water samples, if any, must be analyzed by a competent laboratory for volatile organic hydrocarbons (typically Method 8260 full list), total dissolved solids, pH, major anions and cations including chloride and sulfate, dissolved iron, and dissolved manganese. The investigation workplan must provide the groundwater sampling method(s) and sample handling protocols. To the fullest extent possible, aqueous analyses must be undertaken using nominal method detection limits. As with the soil analyses, copies of the actual laboratory results must be provided including chain of custody documentation.

- Accurately scaled and well-drafted site maps must be provided providing the location of borings, test pits, monitoring wells, potentially impacted areas, and significant surface features including roads and site infrastructure that might limit either the release characterization or remedial efforts. Field sketches may be included in subsequent reporting, but should not be considered stand-alone documentation of the site's layout. Digital photographic documentation of the location and fieldwork is recommended, especially if unusual circumstances are encountered.

**Nothing herein should be interpreted to preclude emergency response actions or to imply immediate remediation by removal cannot proceed as warranted. Nonetheless, characterization of impacts and confirmation of the effectiveness of remedial efforts must still be provided to the OCD before any release incident will be closed.**

Jim Griswold  
OCD Environmental Bureau Chief  
1220 South St. Francis Drive  
Santa Fe, New Mexico 87505  
505-476-3465  
jim.griswold@state.nm.us

**Mark Larson**

---

**Subject:** FW: [EXTERNAL] RE: Targa Resources South Justis Final C141  
**Attachments:** OCD doc Legacy event.pdf

---

**From:** Lynch, Kristen, EMNRD [<mailto:Kristen.Lynch@state.nm.us>]  
**Sent:** Thursday, January 26, 2017 2:30 PM  
**To:** Woodell, Rebecca F.  
**Cc:** Oberding, Tomas, EMNRD; Yu, Olivia, EMNRD; Brown, Maxey G, EMNRD  
**Subject:** [EXTERNAL] RE: Targa Resources South Justis Final C141

Good Afternoon,

Based on documents provided permission to back fill is approved.

Thank You,

Kristen Houston

Sent from Samsung Mobile

----- Original message -----

**From:** "Woodell, Rebecca F."  
**Date:** 01/10/2017 9:39 AM (GMT-07:00)  
**To:** "Lynch, Kristen, EMNRD"  
**Cc:** "Klein, Cindy S.", "Holland, Roger D."  
**Subject:** Targa Resources South Justis Final C141

Kristen, please find attached the Final C141 for the Targa South Justis leak which occurred 12/18/16. Also attached are the lab analysis of the site, meeting OCD standards. Upon OCD approval, the site will be backfilled. Should you have any questions, please call.

Thank You,

Rebecca Woodell  
Targa Resources  
ES&H Specialist Eunice Area  
PO Box 1909  
Eunice, NM 88231  
575.394.2534.239 Office 575.631.7085 Cell  
[rwoodell@targaresources.com](mailto:rwoodell@targaresources.com)

---

This email (including any attachments and accompanying emails) may contain proprietary and confidential information. If you are not the intended recipient, please telephone the sender and immediately delete this e-mail (including any attachments and accompanying emails). Please do not replicate, disclose, distribute, forward, or retain this e-mail or any part of this email. Thank you.

**Attention: This message was sent from someone outside of Targa Resources. Always use caution when opening unsolicited attachments or links, even if they appear to have been sent by someone you know.**

**Attention: This message was sent from someone outside of Targa Resources. Always use caution when opening unsolicited attachments or links, even if they appear to have been sent by someone you know.**