

Historic leak #1 Line break  
UL/L Sec 28 - T10S - R34E  
GPS LAT & LON NAD27(DECIMAL)  
N33.415812 / W103.477041  
GOOGLE Dimensions 513' N&S x 410' E&W  
SITE IS PRESENTLY DRY 4-12-11

Historic leak area #1

Image © 2011 DigitalGlobe  
© 2011 Google

©2010 Google

277 ft

Imagery Date: 12/2/2005



1996

lat 33.416059° lon -103.476472° elev 4216 ft

Eye alt 5427 ft





HISTORIC LEAK AREA #2  
STATE 28 #1 SWD  
UL/I SEC 28 - T10S R34E  
GPS LAT & LON NAD27(DECIMAL)  
N33.416437 / W103.462783  
NUMEROUS LEAKS RANCH HAS DONE THE  
DIKING IN THE SURROUNDING AREA  
GOOGLE DIMENSIONS AT WIDEST AND  
LONGEST 443W N&S X 362'W E&W

Historic leak area #2 State 28 #1 SWD

Image © 2011 DigitalGlobe  
© 2011 Google

©2010 Google

221 ft

Imagery Date: 12/2/2005

1996

lat 33.416534° lon -103.462847° elev 4209 ft

Eye alt 5169 ft



HISTORIC LEAK #3  
HUMBLE STATE #1 SWD P/A  
UL/P SEC 15 - T10S - R34E  
GPS LAT & LON NAD27(DECIMAL)  
N33.441735 / W103.445386  
MOST RECENT LEAK IN NE AREA OF  
DRAWING. SITE HAS BEEN WORK BY  
RANCH



● Historic leak #3 Humble State #1 SWD

Image © 2011 DigitalGlobe  
© 2011 Google

© 2010 Google

203 ft

Imagery Date: 12/2/2005



1996

lat 33.441614° lon -103.445350° elev 4188 ft

Eye alt 5076 ft



**HISTORIC LEAK #4**  
**UL/O SEC 2 - T10S - R34E**  
**GPS LAT & LON NAD27(DECIMAL) N33.468822 / W103.430971**  
**GOOGLE DIMENSION 2337'LENGTH SINGLE FINGER E & W WITH AREA ABOUT 12 TO 20"W**  
**WEST AREA= 344'L N&S X 217'W E&W**  
**EAST AREA=180'L N&S X 119'W E&W**

● **Historic Leak #4**

Image © 2011 DigitalGlobe  
© 2011 Google

©2010 Google

702 ft

Imagery Date: 12/20/2005 1996

lat 33.469048° lon -103.427753° elev 4189 ft

Eye alt 7232 ft



HISTORIC LEAK #5  
UL/D SEC 9 - T10S - R34E  
GPS LAT & LON NAD27(DECIMAL)  
N33.468900 / W103.474676  
NUMEROUS LEAKS OCD HAS ISSUE WITH  
THIS SITE WILL CK FOR 1RP#

Historic Leak #5 ●

Image © 2011 DigitalGlobe  
© 2011 Google

©2010 Google

253 ft

Imagery Date: 12/2/2005



1996

lat 33.468622° lon -103.474345° elev 4241 ft

Eye alt 5354 ft



HISTORIC LEAK SITE #6  
UL/O SEC10 - T10S - R33E  
GPS LAT & LON NAD27(DECIMAL)  
N33.455621 / W103.552039  
SITE IS STILL VERY DAMP UNDER  
TOPSOIL 1" > 2" DEPTH, OPEN  
CONNECTION POLY OIL INSIDE, LEAK  
HAS TRAVELED AND IS LONGER IN  
LENGTH



Image © 2011 DigitalGlobe  
© 2011 Google

©2010 Google

120 ft

Imagery Date: 12/2/2005

1996

lat 33.455658° lon -103.551821° elev 4220 ft

Eye alt 4741 ft



HISTORIC LEAK #7  
UL/P SEC 20 - T9S - R34E  
GPS LAT & LON NAD27(DECIMAL)  
N33.514960 / W10.481134  
GOOGLE DIMENSION  
FINGER N&S 900' L X 52'W  
BOTTOM AREA E. OF P/L  
151'N&S X 230'E&W

Historic Leak #7

Image © 2011 DigitalGlobe  
© 2011 Google

©2010 Google

Imagery Date: 12/2/2005 1996 337 ft

lat 33.515899° lon -103.480382° elev 4276 ft

Eye alt 5742 ft



**HISTORIC LEAK #8**  
**UL/N SEC 15 - T10S - R34E**  
**GPS LAT & LON NAD27(DECIMAL)**  
**N33.440804 / W103.454174**  
**GOOGLE DIMENSIONS**  
**NEARLY ALL OF LEAK AREA IS**  
**UNDER 50'W E&W X 240'L N&S**

**Historic Leak #8**

Image © 2011 DigitalGlobe

©2010 Google

147 ft

Imagery Date: 12/2/2005



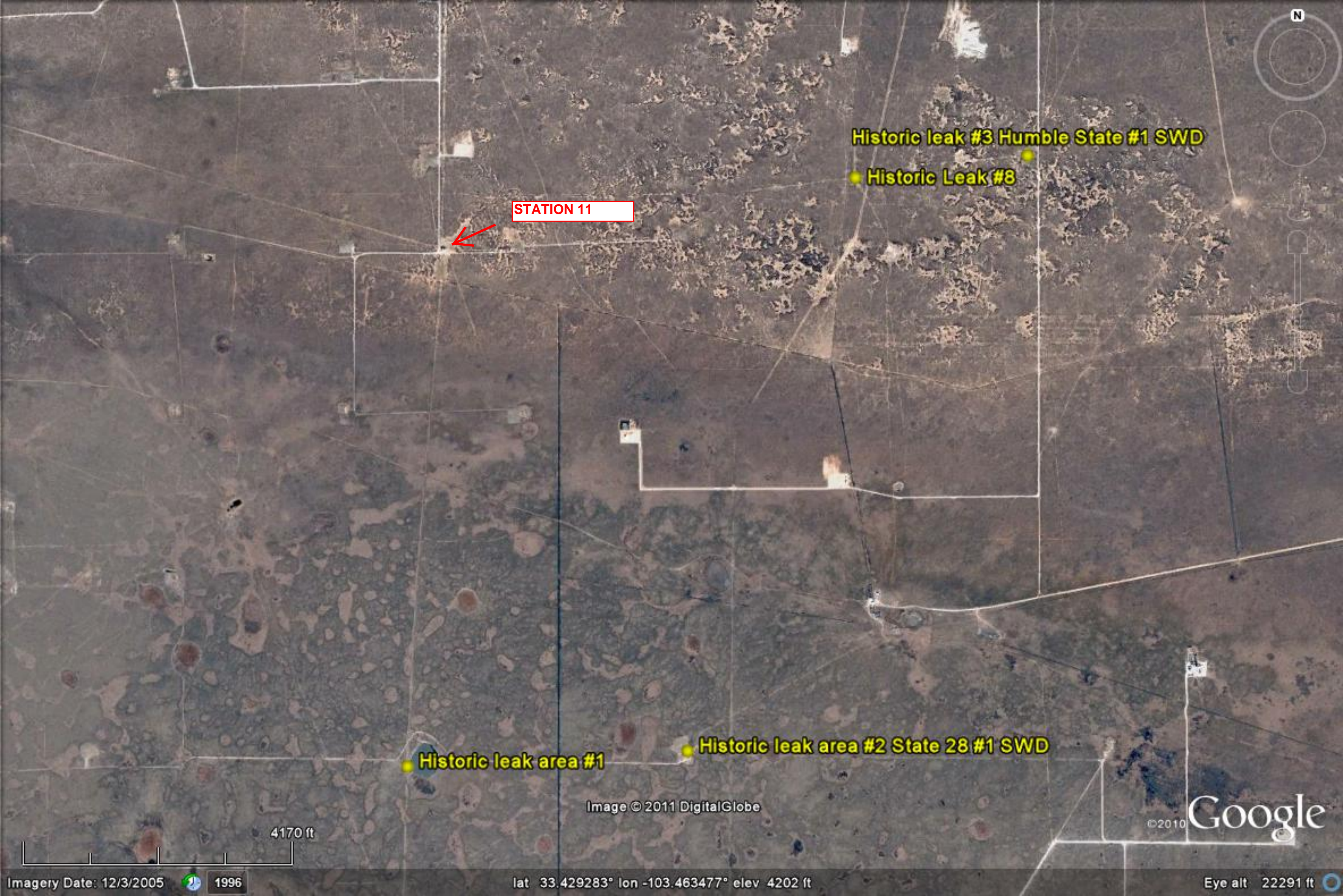
1996

lat 33.440745° lon -103.454113° elev 4194 ft

Eye alt 4832 ft







Historic leak #3 Humble State #1 SWD

Historic Leak #8

STATION 11

Historic leak area #1

Historic leak area #2 State 28 #1 SWD

Image © 2011 DigitalGlobe

©2010 Google

4170 ft

Imagery Date: 12/3/2005



1996

lat 33.429283° lon -103.463477° elev 4202 ft

Eye alt 22291 ft





Historic Leak #5

Historic Leak #4

ROAD S. TO  
STATION 11



4171 ft

Image © 2011 DigitalGlobe

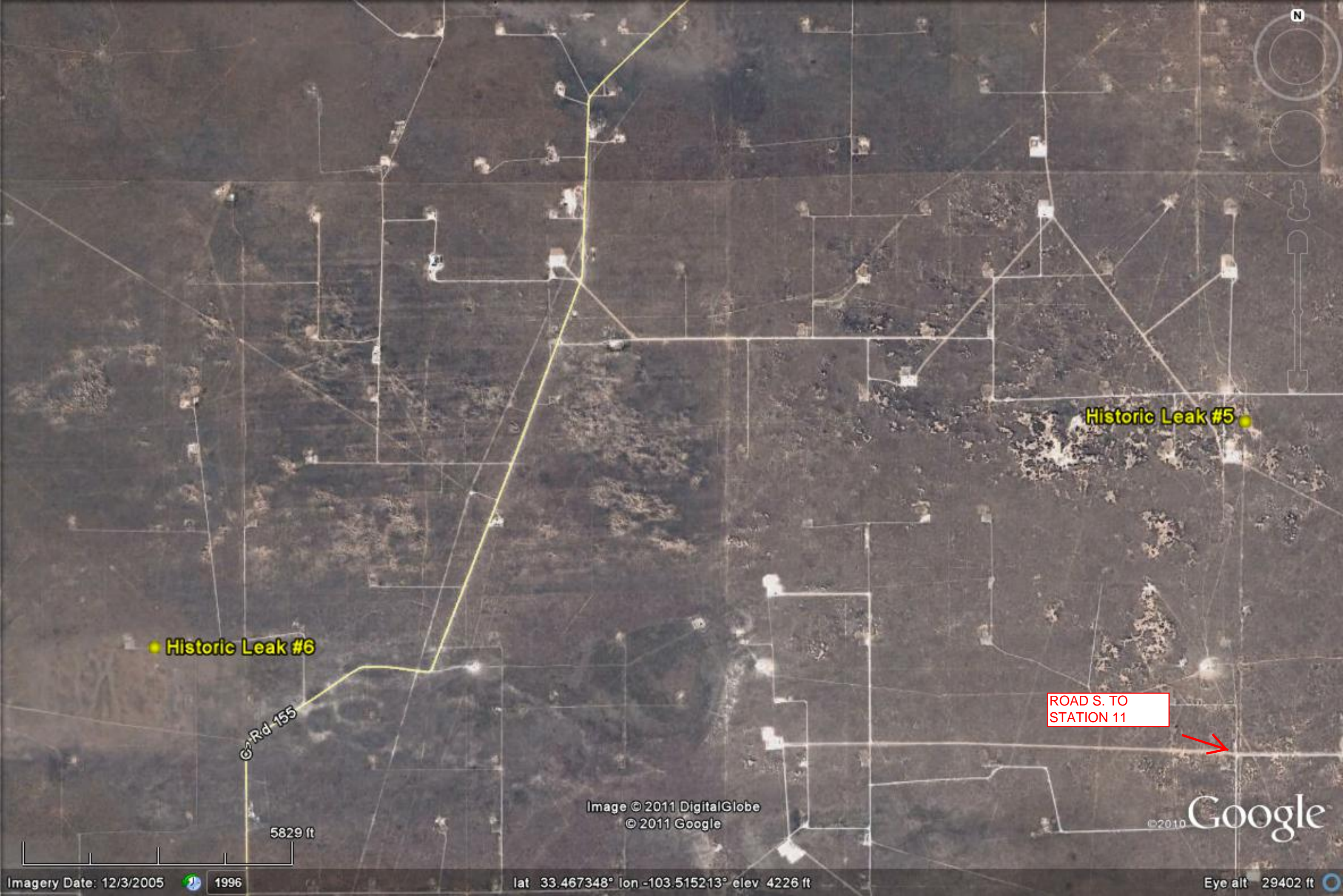
©2010 Google

Imagery Date: 12/20/2005 1996

lat 33.464961° lon -103.452704° elev 4209 ft

Eye alt 22291 ft





Historic Leak #5

Historic Leak #6

Rd 155

ROAD S. TO  
STATION 11

Image © 2011 DigitalGlobe  
© 2011 Google

©2010 Google

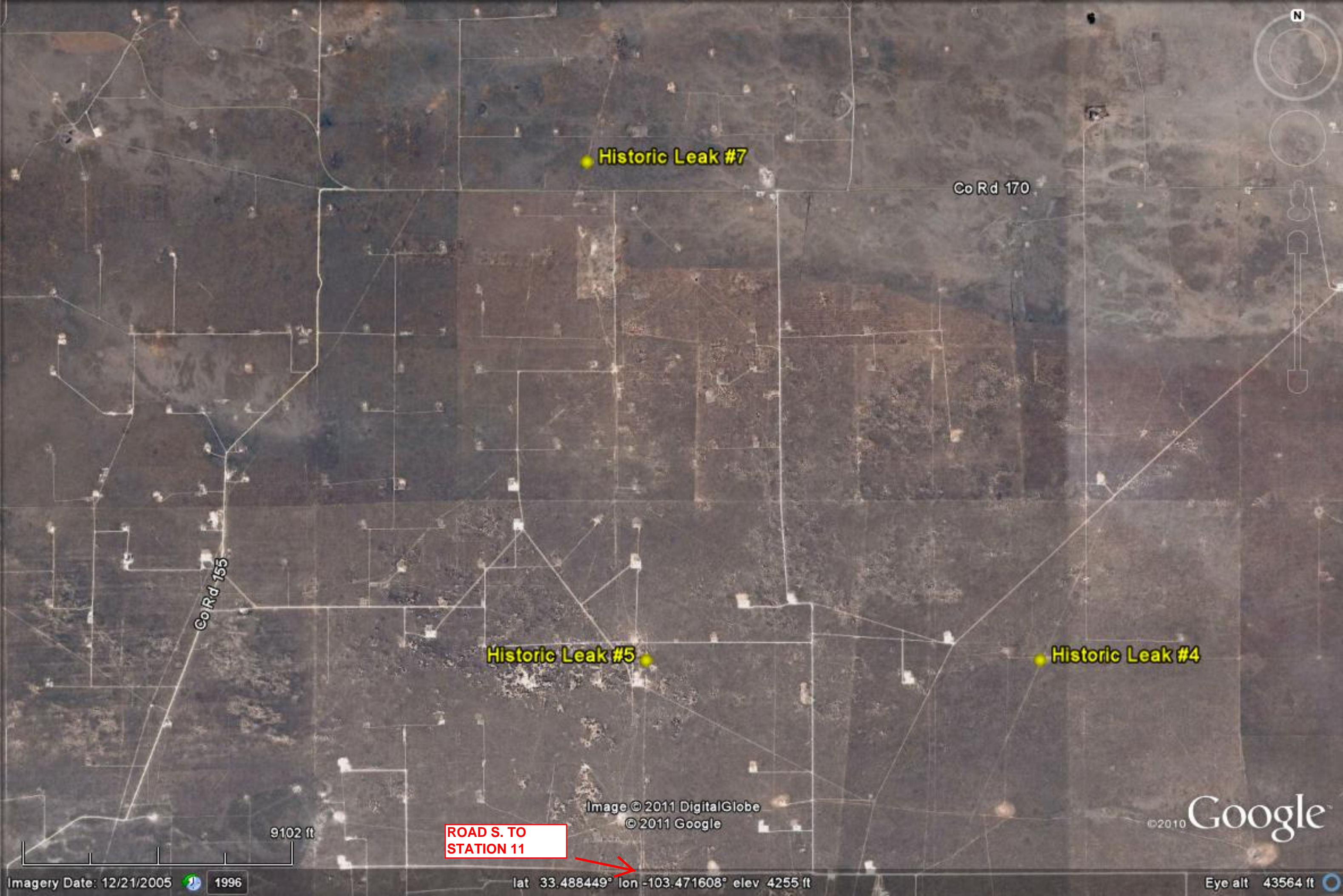
Imagery Date: 12/3/2005

1996

lat 33.467348° lon -103.515213° elev 4226 ft

Eye alt 29402 ft





Historic Leak #7

Co Rd 170

Co Rd 155

Historic Leak #5

Historic Leak #4

Image © 2011 DigitalGlobe  
© 2011 Google

©2010 Google

9102 ft

ROAD S. TO  
STATION 11

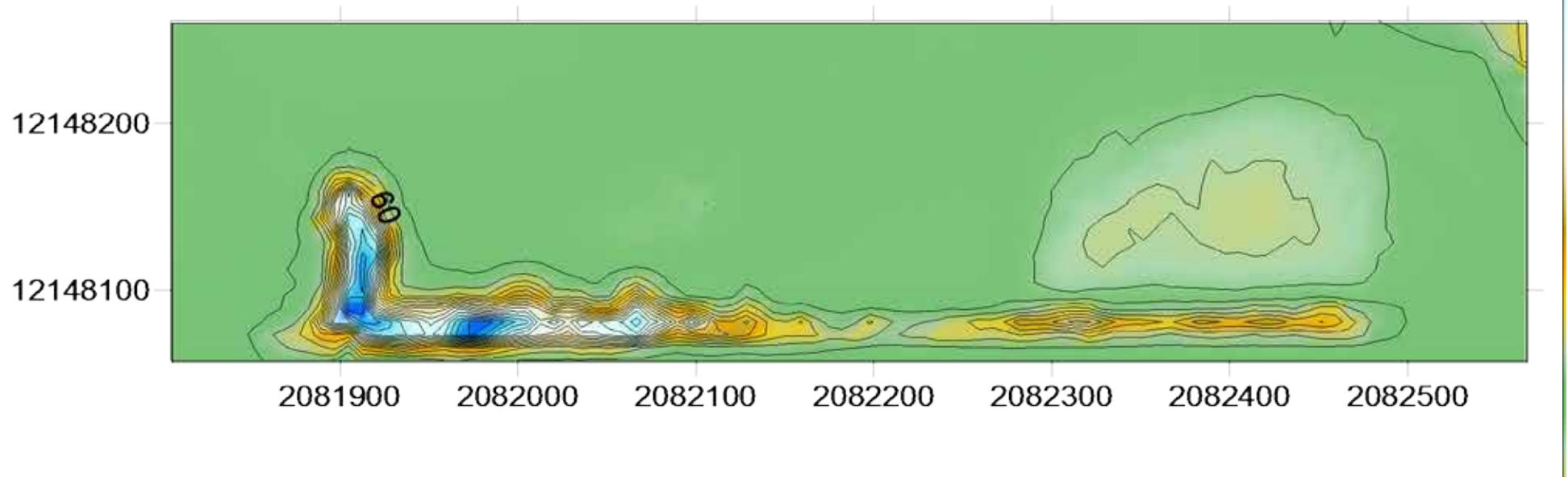
Imagery Date: 12/21/2005 1996

lat 33.488449° lon -103.471608° elev 4255 ft

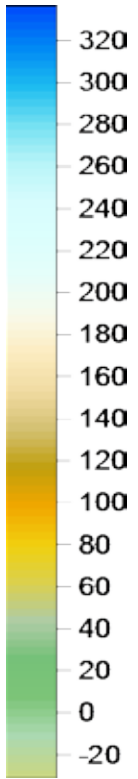
Eye alt 43564 ft



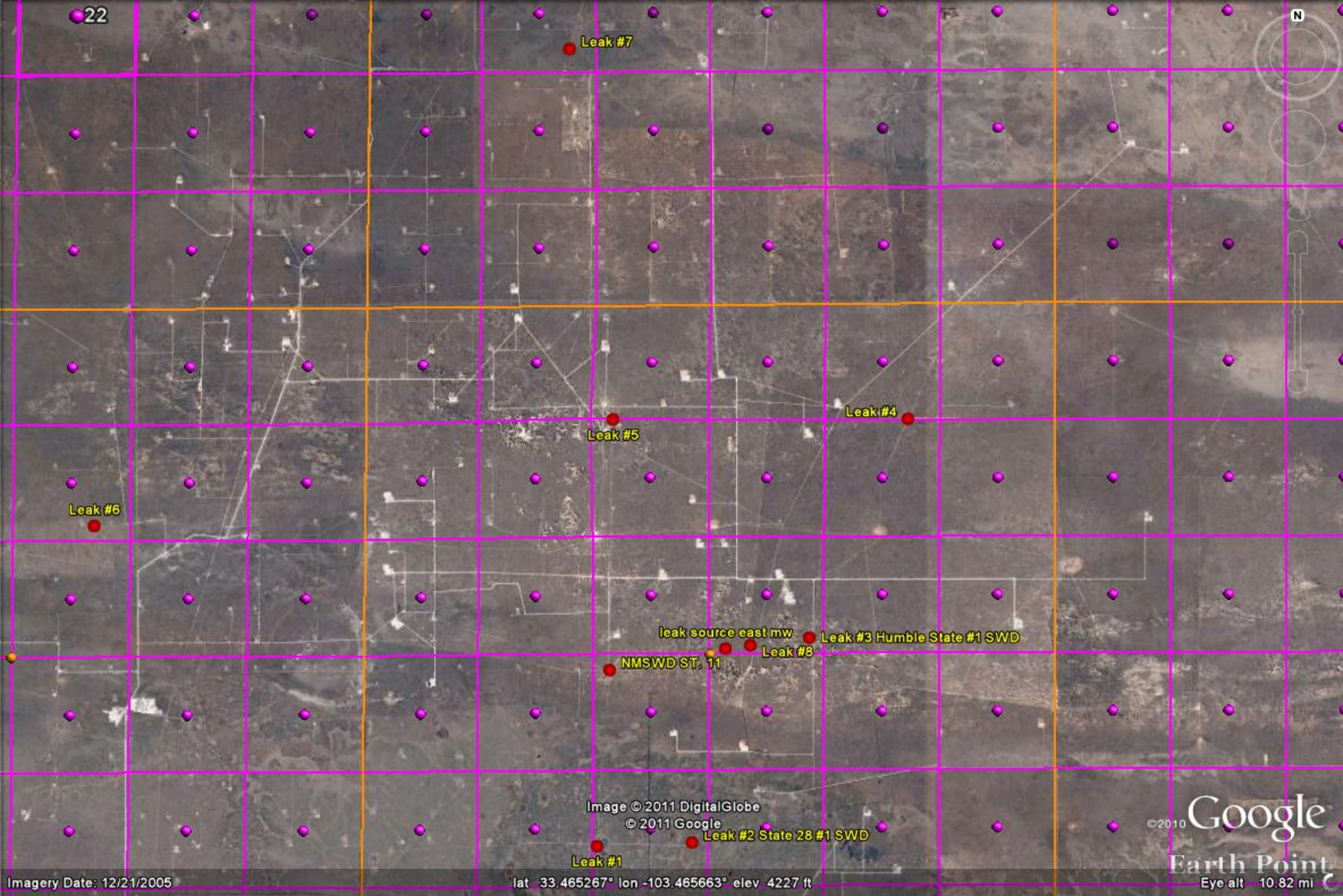
NMSWD Leak #6  
EM - 38 Vertical 0-5'











Leak #7

Leak #4

Leak #5

Leak #6

leak source east mw

Leak #3 Humble State #1 SWD

Leak #8

NMSWD ST. 11

Image © 2011 DigitalGlobe

© 2011 Google

Leak #2 State 28 #1 SWD

Leak #1



NMSWD HISTORIC LEAK SITES  
GPS LAT & LON NAD27 (DECIMAL)

LEAK #1

UL/I SEC28 - T10S - R34E

N33.415812° / W-103.477041°

LEAK #2 STATE 28 SWD

UL/I SEC28 - T10S - R34E

N33.416272° / W-103.462878°

LEAK #3 HUMBLE STATE #1 SWD

UL/P SEC15 - T10S - R34E

N33.441735° / W-103.445386°

LEAK #4

UL/O SEC2 - T10S - R34E

N 33.468985° / W-103.430675°

LEAK #5

ULD SEC9 - T10S - R34E

N 33.468900° / W-103.474676°

LEAK #6

UL/O SEC10 - T10S - R33E

N 33.455621° / W-103.552039°

LEAK #7

UL/P SEC20 - T9S - R34E

N 33.514960° / W-103.481134°

LEAK #8

UL/N SEC15 - T10S - R34E

N 33.440804° / W-103.454174°

NMSWD 6" LINE LEAK

UL/M SEC15 - T10S - R34E

N 33.440405° / W-103.457886°

NMSWD SIMANOLA MAIN STATION #11

UL/D SEC21 - T10S - R34E

N 33.437726° / W-103.475164°