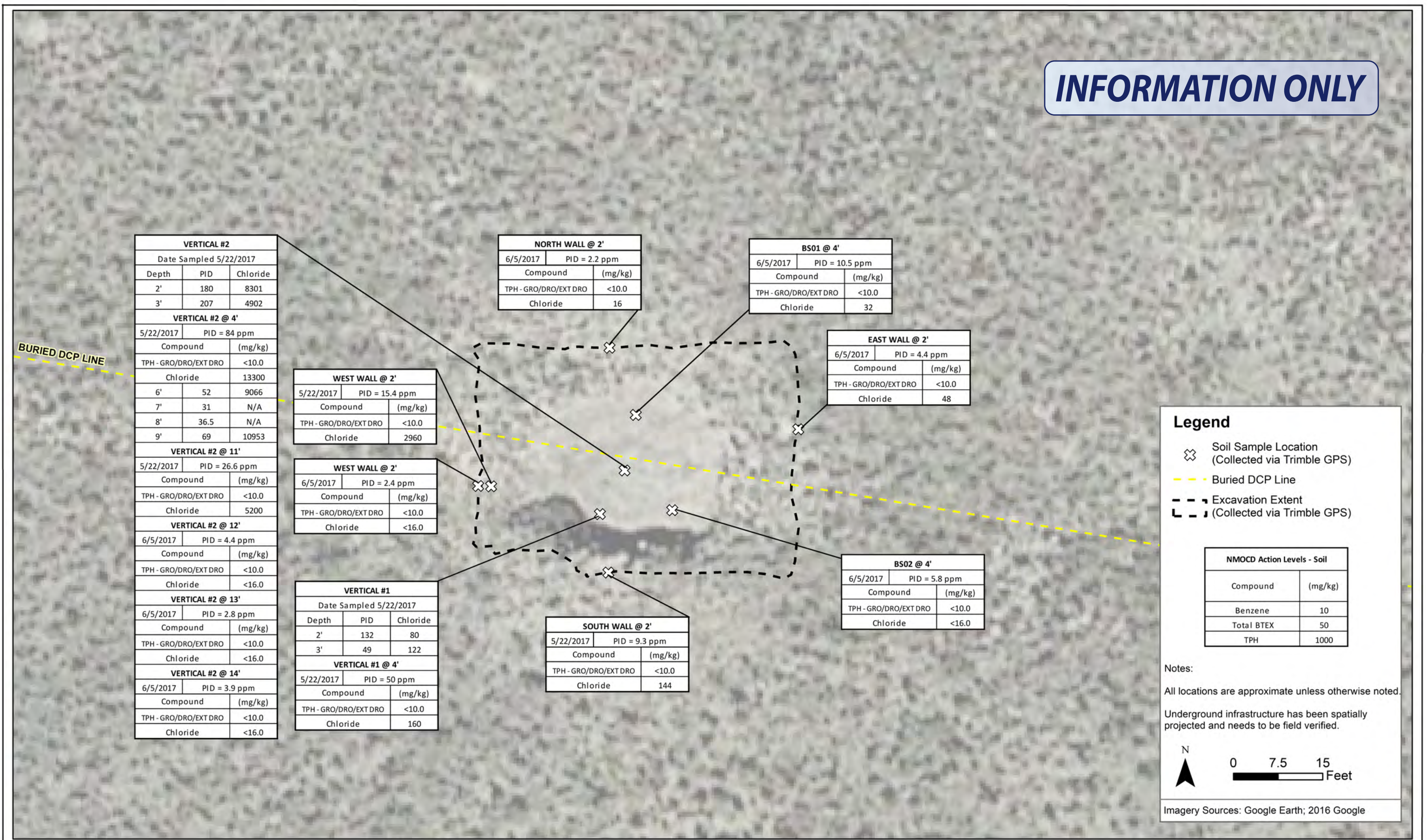


INFORMATION ONLY



DATE: June 2017  
DESIGNED BY: K. Norman  
DRAWN BY: D. Arnold

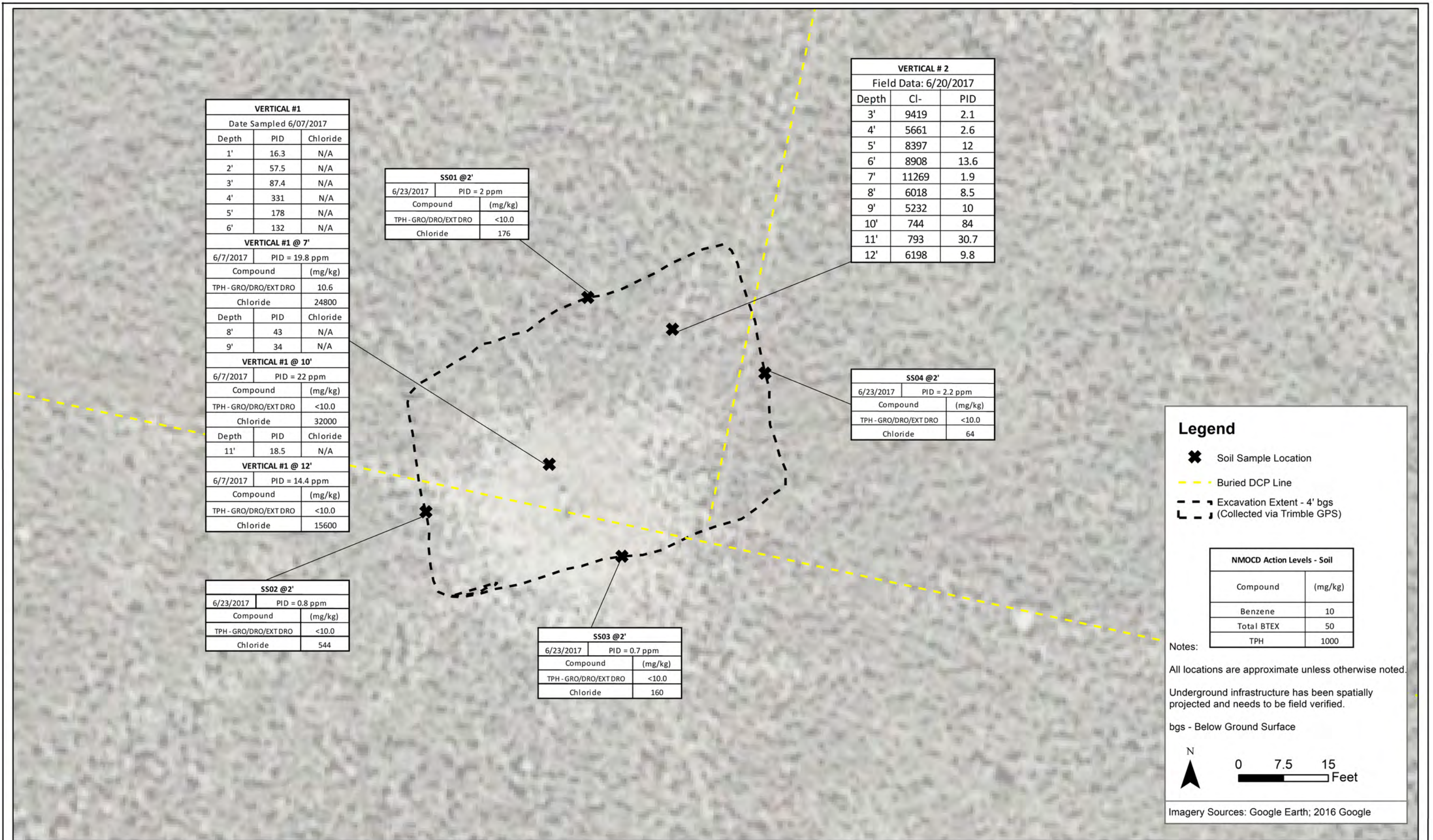
 **TASMAN**  
GEOSCIENCES  
Tasman Geosciences Inc.  
6899 Pecos Street - Unit C  
Denver, CO 80221

**DCP Midstream**  
**D-1-2 - Area 1**  
NWSE Section 23, Township 22 South, Range 34 East  
Lea County, New Mexico

Excavation Overview  
Figure

Figure  
1









# New Mexico Office of the State Engineer

## Water Column/Average Depth to Water

(A CLW##### in the POD suffix indicates the POD has been replaced & no longer serves a water right file.)

(R=POD has been replaced,  
O=orphaned,  
C=the file is closed)

(quarters are 1=NW 2=NE 3=SW 4=SE)

(quarters are smallest to largest)

(NAD83 UTM in meters)

(In feet)

POD Number	POD Sub-Code	basin	County	Q 64	Q 16	Q 4	Sec	Tws	Rng	X	Y	Distance	Depth Well	Depth Water	Water Column
<a href="#">L 11339</a>	L	LE		2	4	4	11	18S	38E	676901	3625969*	328	160	90	70
<a href="#">L 03332</a>	L	LE			2	4	11	18S	38E	676795	3626272*	442	125	60	65
<a href="#">L 12245 POD1</a>	L	LE		2	4	3	11	18S	38E	676079	3626022	523	155		
<a href="#">L 07772</a>	L	LE		2	2	1	14	18S	38E	676104	3625553*	582	200	65	135
<a href="#">L 11635</a>	L	LE		3	3	2	11	18S	38E	676284	3626568*	747	185	78	107
<a href="#">L 03487</a>	L	LE			4	2	11	18S	38E	676787	3626675*	817	112	45	67
<a href="#">L 07721</a>	L	LE		2	4	1	14	18S	38E	676111	3625150*	872	150	70	80
<a href="#">L 13802 POD1</a>		LE		1	3	2	11	18S	38E	676357	3626791	935	190	111	79
<a href="#">L 10517</a>	L	LE				2	11	18S	38E	676586	3626870*	986	112	86	26
<a href="#">L 11022</a>	L	LE				2	11	18S	38E	676586	3626870*	986	200	150	50
<a href="#">L 11103</a>	L	LE				2	11	18S	38E	676586	3626870*	986	200		

Average Depth to Water: **83 feet**

Minimum Depth: **45 feet**

Maximum Depth: **150 feet**

Record Count: 11

UTMNA83 Radius Search (in meters):

Easting (X): 676583.93

Northing (Y): 3625883.54

Radius: 1000

\*UTM location was derived from PLSS - see Help

The data is furnished by the NMOSE/ISC and is accepted by the recipient with the expressed understanding that the OSE/ISC make no warranties, expressed or implied, concerning the accuracy, completeness, reliability, usability, or suitability for any particular purpose of the data.