

OCD - HOBBS

06/27/2016

RECEIVED

30-025-43322



Lea County, NM (NAD 27 NME)

Braswell 16 State Com #706H

Plan #.01

PROJECT DETAILS: Lea County, NM (NAD 27 NME)

Geodetic System: US State Plane 1927 (Exact solution)
 Datum: NAD 1927 (NADCON CONUS)
 Ellipsoid: Clarke 1866
 Zone: New Mexico East 3001
 System Datum: Mean Sea Level

WELL DETAILS: #706H

Ground Level: 3271.0
 KB = 25' @ 3296.0usft
 Northing 377860.00 Easting 733673.00 Latitude 32° 2' 11.793 N Longitude 103° 34' 45.287 W

SECTION DETAILS

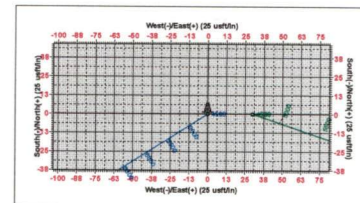
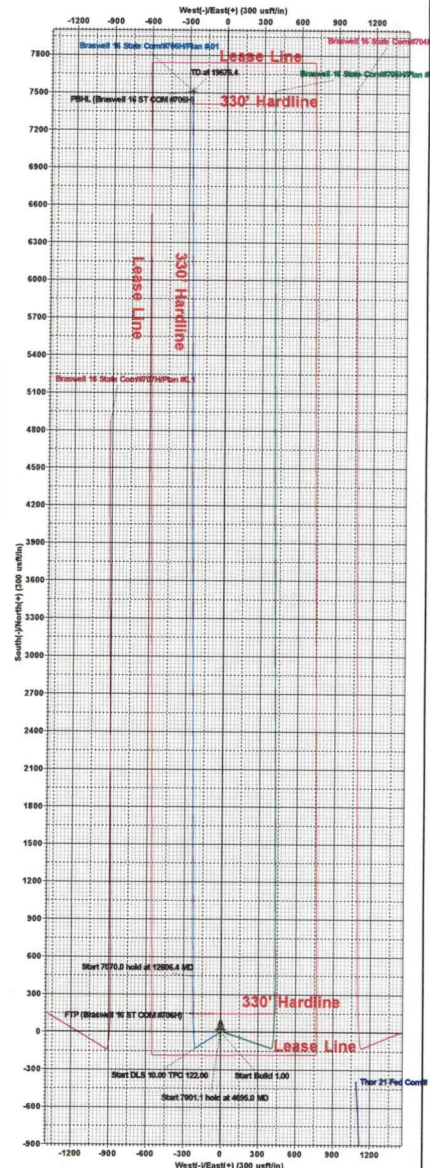
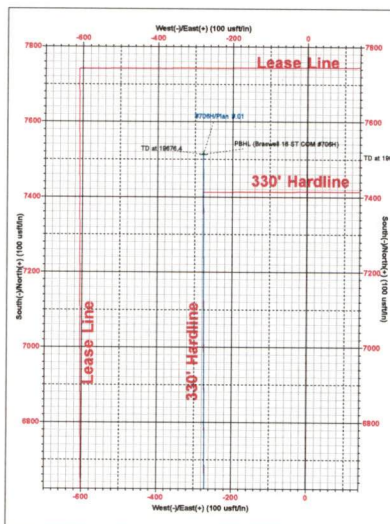
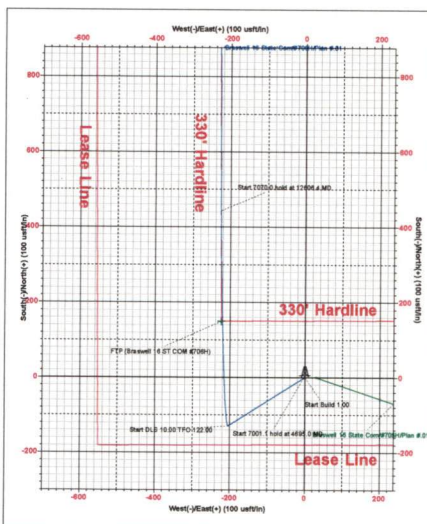
Sec	MD	Inc	Azi	TVD	+N/-S	+E/-W	Dleg	TFace	Vsect	Target
1	0.0	0.00	0.00	0.0	0.0	0.0	0.00	0.00	0.0	
2	4500.0	0.00	0.00	4500.0	0.0	0.0	0.00	0.00	0.0	
3	4695.0	1.95	237.56	4694.9	-1.8	-2.8	1.00	237.56	-1.7	
4	11696.0	1.95	237.56	11692.0	-129.6	-203.8	0.00	0.00	-121.9	
5	12606.4	90.00	359.57	12275.0	443.2	-224.9	10.00	122.00	451.2	PBHL (Braswell 16 ST COM #706H)
6	19676.4	90.00	359.57	12275.0	7513.0	-278.0	0.00	0.00	7518.1	

CASING DETAILS

No casing data is available

WELLBORE TARGET DETAILS (MAP CO-ORDINATES)

Name	TVD	+N/-S	+E/-W	Northing	Easting
PBHL (Braswell 16 ST COM #706H)	12275.0	7513.0	-278.0	383373.00	733395.00
FTP (Braswell 16 ST COM #706H)	12275.0	149.0	-223.0	378009.00	733450.00



Lea County, NM (NAD 27 NME)
 Datum: NAD 1927 (NADCON CONUS)
 Ellipsoid: Clarke 1866
 Zone: New Mexico East 3001
 System Datum: Mean Sea Level



EOG Resources - Midland

Lea County, NM (NAD 27 NME)

Braswell 16 State Com

#706H

OH

Plan: Plan #.01

Standard Planning Report

23 June, 2016



EOG Resources, Inc.
Planning Report

Database:	EDM 5000.1 Single User Db	Local Co-ordinate Reference:	Well #706H
Company:	EOG Resources - Midland	TVD Reference:	KB = 25' @ 3296.0usft
Project:	Lea County, NM (NAD 27 NME)	MD Reference:	KB = 25' @ 3296.0usft
Site:	Braswell 16 State Com	North Reference:	Grid
Well:	#706H	Survey Calculation Method:	Minimum Curvature
Wellbore:	OH		
Design:	Plan #.01		

Project	Lea County, NM (NAD 27 NME)		
Map System:	US State Plane 1927 (Exact solution)	System Datum:	Mean Sea Level
Geo Datum:	NAD 1927 (NADCON CONUS)		
Map Zone:	New Mexico East 3001		

Site	Braswell 16 State Com		
Site Position:		Northing:	378,303.00 usft
From:	Map	Easting:	736,347.00 usft
Position Uncertainty:	0.0 usft	Slot Radius:	13-3/16 "
		Latitude:	32° 2' 15.991 N
		Longitude:	103° 34' 14.187 W
		Grid Convergence:	0.40 °

Well	#706H		
Well Position	+N/-S	-443.0 usft	Northing: 377,860.00 usft
	+E/-W	-2,674.0 usft	Easting: 733,673.00 usft
Position Uncertainty	0.0 usft	Wellhead Elevation:	0.0 usft
		Latitude:	32° 2' 11.793 N
		Longitude:	103° 34' 45.287 W
		Ground Level:	3,271.0 usft

Wellbore	OH				
Magnetics	Model Name	Sample Date	Declination (°)	Dip Angle (°)	Field Strength (nT)
	IGRF2015	6/23/2016	7.05	59.90	47,928

Design	Plan #.01			
Audit Notes:				
Version:	Phase:	PLAN	Tie On Depth:	0.0
Vertical Section:	Depth From (TVD) (usft)	+N/-S (usft)	+E/-W (usft)	Direction (°)
	0.0	0.0	0.0	357.88

Plan Sections										
Measured Depth (usft)	Inclination (°)	Azimuth (°)	Vertical Depth (usft)	+N/-S (usft)	+E/-W (usft)	Dogleg Rate (°/100usft)	Build Rate (°/100usft)	Turn Rate (°/100usft)	TFO (°)	Target
0.0	0.00	0.00	0.0	0.0	0.0	0.00	0.00	0.00	0.00	
4,500.0	0.00	0.00	4,500.0	0.0	0.0	0.00	0.00	0.00	0.00	
4,695.0	1.95	237.56	4,694.9	-1.8	-2.8	1.00	1.00	0.00	237.56	
11,696.0	1.95	237.56	11,692.0	-129.6	-203.8	0.00	0.00	0.00	0.00	
12,606.4	90.00	359.57	12,275.0	443.2	-224.9	10.00	9.67	13.40	122.00	
19,676.4	90.00	359.57	12,275.0	7,513.0	-278.0	0.00	0.00	0.00	0.00	PBHL (Braswell 16 S1



EOG Resources, Inc.
Planning Report

Database: EDM 5000.1 Single User Db
Company: EOG Resources - Midland
Project: Lea County, NM (NAD 27 NME)
Site: Braswell 16 State Com
Well: #706H
Wellbore: OH
Design: Plan #.01

Local Co-ordinate Reference: Well #706H
TVD Reference: KB = 25' @ 3296.0usft
MD Reference: KB = 25' @ 3296.0usft
North Reference: Grid
Survey Calculation Method: Minimum Curvature

Planned Survey

Measured Depth (usft)	Inclination (°)	Azimuth (°)	Vertical Depth (usft)	+N/-S (usft)	+E/-W (usft)	Vertical Section (usft)	Dogleg Rate (°/100usft)	Build Rate (°/100usft)	Turn Rate (°/100usft)
0.0	0.00	0.00	0.0	0.0	0.0	0.0	0.00	0.00	0.00
100.0	0.00	0.00	100.0	0.0	0.0	0.0	0.00	0.00	0.00
200.0	0.00	0.00	200.0	0.0	0.0	0.0	0.00	0.00	0.00
300.0	0.00	0.00	300.0	0.0	0.0	0.0	0.00	0.00	0.00
400.0	0.00	0.00	400.0	0.0	0.0	0.0	0.00	0.00	0.00
500.0	0.00	0.00	500.0	0.0	0.0	0.0	0.00	0.00	0.00
600.0	0.00	0.00	600.0	0.0	0.0	0.0	0.00	0.00	0.00
700.0	0.00	0.00	700.0	0.0	0.0	0.0	0.00	0.00	0.00
800.0	0.00	0.00	800.0	0.0	0.0	0.0	0.00	0.00	0.00
900.0	0.00	0.00	900.0	0.0	0.0	0.0	0.00	0.00	0.00
1,000.0	0.00	0.00	1,000.0	0.0	0.0	0.0	0.00	0.00	0.00
1,100.0	0.00	0.00	1,100.0	0.0	0.0	0.0	0.00	0.00	0.00
1,200.0	0.00	0.00	1,200.0	0.0	0.0	0.0	0.00	0.00	0.00
1,300.0	0.00	0.00	1,300.0	0.0	0.0	0.0	0.00	0.00	0.00
1,400.0	0.00	0.00	1,400.0	0.0	0.0	0.0	0.00	0.00	0.00
1,500.0	0.00	0.00	1,500.0	0.0	0.0	0.0	0.00	0.00	0.00
1,600.0	0.00	0.00	1,600.0	0.0	0.0	0.0	0.00	0.00	0.00
1,700.0	0.00	0.00	1,700.0	0.0	0.0	0.0	0.00	0.00	0.00
1,800.0	0.00	0.00	1,800.0	0.0	0.0	0.0	0.00	0.00	0.00
1,900.0	0.00	0.00	1,900.0	0.0	0.0	0.0	0.00	0.00	0.00
2,000.0	0.00	0.00	2,000.0	0.0	0.0	0.0	0.00	0.00	0.00
2,100.0	0.00	0.00	2,100.0	0.0	0.0	0.0	0.00	0.00	0.00
2,200.0	0.00	0.00	2,200.0	0.0	0.0	0.0	0.00	0.00	0.00
2,300.0	0.00	0.00	2,300.0	0.0	0.0	0.0	0.00	0.00	0.00
2,400.0	0.00	0.00	2,400.0	0.0	0.0	0.0	0.00	0.00	0.00
2,500.0	0.00	0.00	2,500.0	0.0	0.0	0.0	0.00	0.00	0.00
2,600.0	0.00	0.00	2,600.0	0.0	0.0	0.0	0.00	0.00	0.00
2,700.0	0.00	0.00	2,700.0	0.0	0.0	0.0	0.00	0.00	0.00
2,800.0	0.00	0.00	2,800.0	0.0	0.0	0.0	0.00	0.00	0.00
2,900.0	0.00	0.00	2,900.0	0.0	0.0	0.0	0.00	0.00	0.00
3,000.0	0.00	0.00	3,000.0	0.0	0.0	0.0	0.00	0.00	0.00
3,100.0	0.00	0.00	3,100.0	0.0	0.0	0.0	0.00	0.00	0.00
3,200.0	0.00	0.00	3,200.0	0.0	0.0	0.0	0.00	0.00	0.00
3,300.0	0.00	0.00	3,300.0	0.0	0.0	0.0	0.00	0.00	0.00
3,400.0	0.00	0.00	3,400.0	0.0	0.0	0.0	0.00	0.00	0.00
3,500.0	0.00	0.00	3,500.0	0.0	0.0	0.0	0.00	0.00	0.00
3,600.0	0.00	0.00	3,600.0	0.0	0.0	0.0	0.00	0.00	0.00
3,700.0	0.00	0.00	3,700.0	0.0	0.0	0.0	0.00	0.00	0.00
3,800.0	0.00	0.00	3,800.0	0.0	0.0	0.0	0.00	0.00	0.00
3,900.0	0.00	0.00	3,900.0	0.0	0.0	0.0	0.00	0.00	0.00
4,000.0	0.00	0.00	4,000.0	0.0	0.0	0.0	0.00	0.00	0.00
4,100.0	0.00	0.00	4,100.0	0.0	0.0	0.0	0.00	0.00	0.00
4,200.0	0.00	0.00	4,200.0	0.0	0.0	0.0	0.00	0.00	0.00
4,300.0	0.00	0.00	4,300.0	0.0	0.0	0.0	0.00	0.00	0.00
4,400.0	0.00	0.00	4,400.0	0.0	0.0	0.0	0.00	0.00	0.00
4,500.0	0.00	0.00	4,500.0	0.0	0.0	0.0	0.00	0.00	0.00
4,600.0	1.00	237.56	4,600.0	-0.5	-0.7	-0.4	1.00	1.00	0.00
4,695.0	1.95	237.56	4,694.9	-1.8	-2.8	-1.7	1.00	1.00	0.00
4,700.0	1.95	237.56	4,700.0	-1.9	-2.9	-1.8	0.00	0.00	0.00
4,800.0	1.95	237.56	4,799.9	-3.7	-5.8	-3.5	0.00	0.00	0.00
4,900.0	1.95	237.56	4,899.8	-5.5	-8.7	-5.2	0.00	0.00	0.00
5,000.0	1.95	237.56	4,999.8	-7.3	-11.6	-6.9	0.00	0.00	0.00
5,100.0	1.95	237.56	5,099.7	-9.2	-14.4	-8.6	0.00	0.00	0.00
5,200.0	1.95	237.56	5,199.7	-11.0	-17.3	-10.3	0.00	0.00	0.00



EOG Resources, Inc.

Planning Report

Database: EDM 5000.1 Single User Db
Company: EOG Resources - Midland
Project: Lea County, NM (NAD 27 NME)
Site: Braswell 16 State Com
Well: #706H
Wellbore: OH
Design: Plan #.01

Local Co-ordinate Reference: Well #706H
TVD Reference: KB = 25' @ 3296.0usft
MD Reference: KB = 25' @ 3296.0usft
North Reference: Grid
Survey Calculation Method: Minimum Curvature

Planned Survey

Measured Depth (usft)	Inclination (°)	Azimuth (°)	Vertical Depth (usft)	+N/-S (usft)	+E/-W (usft)	Vertical Section (usft)	Dogleg Rate (°/100usft)	Build Rate (°/100usft)	Turn Rate (°/100usft)
5,300.0	1.95	237.56	5,299.6	-12.8	-20.2	-12.1	0.00	0.00	0.00
5,400.0	1.95	237.56	5,399.6	-14.6	-23.0	-13.8	0.00	0.00	0.00
5,500.0	1.95	237.56	5,499.5	-16.5	-25.9	-15.5	0.00	0.00	0.00
5,600.0	1.95	237.56	5,599.4	-18.3	-28.8	-17.2	0.00	0.00	0.00
5,700.0	1.95	237.56	5,699.4	-20.1	-31.7	-18.9	0.00	0.00	0.00
5,800.0	1.95	237.56	5,799.3	-21.9	-34.5	-20.7	0.00	0.00	0.00
5,900.0	1.95	237.56	5,899.3	-23.8	-37.4	-22.4	0.00	0.00	0.00
6,000.0	1.95	237.56	5,999.2	-25.6	-40.3	-24.1	0.00	0.00	0.00
6,100.0	1.95	237.56	6,099.1	-27.4	-43.1	-25.8	0.00	0.00	0.00
6,200.0	1.95	237.56	6,199.1	-29.2	-46.0	-27.5	0.00	0.00	0.00
6,300.0	1.95	237.56	6,299.0	-31.1	-48.9	-29.2	0.00	0.00	0.00
6,400.0	1.95	237.56	6,399.0	-32.9	-51.8	-31.0	0.00	0.00	0.00
6,500.0	1.95	237.56	6,498.9	-34.7	-54.6	-32.7	0.00	0.00	0.00
6,600.0	1.95	237.56	6,598.9	-36.5	-57.5	-34.4	0.00	0.00	0.00
6,700.0	1.95	237.56	6,698.8	-38.4	-60.4	-36.1	0.00	0.00	0.00
6,800.0	1.95	237.56	6,798.7	-40.2	-63.2	-37.8	0.00	0.00	0.00
6,900.0	1.95	237.56	6,898.7	-42.0	-66.1	-39.6	0.00	0.00	0.00
7,000.0	1.95	237.56	6,998.6	-43.8	-69.0	-41.3	0.00	0.00	0.00
7,100.0	1.95	237.56	7,098.6	-45.7	-71.9	-43.0	0.00	0.00	0.00
7,200.0	1.95	237.56	7,198.5	-47.5	-74.7	-44.7	0.00	0.00	0.00
7,300.0	1.95	237.56	7,298.5	-49.3	-77.6	-46.4	0.00	0.00	0.00
7,400.0	1.95	237.56	7,398.4	-51.2	-80.5	-48.1	0.00	0.00	0.00
7,500.0	1.95	237.56	7,498.3	-53.0	-83.3	-49.9	0.00	0.00	0.00
7,600.0	1.95	237.56	7,598.3	-54.8	-86.2	-51.6	0.00	0.00	0.00
7,700.0	1.95	237.56	7,698.2	-56.6	-89.1	-53.3	0.00	0.00	0.00
7,800.0	1.95	237.56	7,798.2	-58.5	-92.0	-55.0	0.00	0.00	0.00
7,900.0	1.95	237.56	7,898.1	-60.3	-94.8	-56.7	0.00	0.00	0.00
8,000.0	1.95	237.56	7,998.0	-62.1	-97.7	-58.4	0.00	0.00	0.00
8,100.0	1.95	237.56	8,098.0	-63.9	-100.6	-60.2	0.00	0.00	0.00
8,200.0	1.95	237.56	8,197.9	-65.8	-103.4	-61.9	0.00	0.00	0.00
8,300.0	1.95	237.56	8,297.9	-67.6	-106.3	-63.6	0.00	0.00	0.00
8,400.0	1.95	237.56	8,397.8	-69.4	-109.2	-65.3	0.00	0.00	0.00
8,500.0	1.95	237.56	8,497.8	-71.2	-112.0	-67.0	0.00	0.00	0.00
8,600.0	1.95	237.56	8,597.7	-73.1	-114.9	-68.8	0.00	0.00	0.00
8,700.0	1.95	237.56	8,697.6	-74.9	-117.8	-70.5	0.00	0.00	0.00
8,800.0	1.95	237.56	8,797.6	-76.7	-120.7	-72.2	0.00	0.00	0.00
8,900.0	1.95	237.56	8,897.5	-78.5	-123.5	-73.9	0.00	0.00	0.00
9,000.0	1.95	237.56	8,997.5	-80.4	-126.4	-75.6	0.00	0.00	0.00
9,100.0	1.95	237.56	9,097.4	-82.2	-129.3	-77.3	0.00	0.00	0.00
9,200.0	1.95	237.56	9,197.4	-84.0	-132.1	-79.1	0.00	0.00	0.00
9,300.0	1.95	237.56	9,297.3	-85.8	-135.0	-80.8	0.00	0.00	0.00
9,400.0	1.95	237.56	9,397.2	-87.7	-137.9	-82.5	0.00	0.00	0.00
9,500.0	1.95	237.56	9,497.2	-89.5	-140.8	-84.2	0.00	0.00	0.00
9,600.0	1.95	237.56	9,597.1	-91.3	-143.6	-85.9	0.00	0.00	0.00
9,700.0	1.95	237.56	9,697.1	-93.1	-146.5	-87.6	0.00	0.00	0.00
9,800.0	1.95	237.56	9,797.0	-95.0	-149.4	-89.4	0.00	0.00	0.00
9,900.0	1.95	237.56	9,896.9	-96.8	-152.2	-91.1	0.00	0.00	0.00
10,000.0	1.95	237.56	9,996.9	-98.6	-155.1	-92.8	0.00	0.00	0.00
10,100.0	1.95	237.56	10,096.8	-100.4	-158.0	-94.5	0.00	0.00	0.00
10,200.0	1.95	237.56	10,196.8	-102.3	-160.9	-96.2	0.00	0.00	0.00
10,300.0	1.95	237.56	10,296.7	-104.1	-163.7	-98.0	0.00	0.00	0.00
10,400.0	1.95	237.56	10,396.7	-105.9	-166.6	-99.7	0.00	0.00	0.00
10,500.0	1.95	237.56	10,496.6	-107.7	-169.5	-101.4	0.00	0.00	0.00
10,600.0	1.95	237.56	10,596.5	-109.6	-172.3	-103.1	0.00	0.00	0.00



EOG Resources, Inc.
Planning Report

Database:	EDM 5000.1 Single User Db	Local Co-ordinate Reference:	Well #706H
Company:	EOG Resources - Midland	TVD Reference:	KB = 25' @ 3296.0usft
Project:	Lea County, NM (NAD 27 NME)	MD Reference:	KB = 25' @ 3296.0usft
Site:	Braswell 16 State Com	North Reference:	Grid
Well:	#706H	Survey Calculation Method:	Minimum Curvature
Wellbore:	OH		
Design:	Plan #.01		

Planned Survey										
Measured Depth (usft)	Inclination (°)	Azimuth (°)	Vertical Depth (usft)	+N/-S (usft)	+E/-W (usft)	Vertical Section (usft)	Dogleg Rate (°/100usft)	Build Rate (°/100usft)	Turn Rate (°/100usft)	
10,700.0	1.95	237.56	10,696.5	-111.4	-175.2	-104.8	0.00	0.00	0.00	
10,800.0	1.95	237.56	10,796.4	-113.2	-178.1	-106.5	0.00	0.00	0.00	
10,900.0	1.95	237.56	10,896.4	-115.0	-181.0	-108.3	0.00	0.00	0.00	
11,000.0	1.95	237.56	10,996.3	-116.9	-183.8	-110.0	0.00	0.00	0.00	
11,100.0	1.95	237.56	11,096.3	-118.7	-186.7	-111.7	0.00	0.00	0.00	
11,200.0	1.95	237.56	11,196.2	-120.5	-189.6	-113.4	0.00	0.00	0.00	
11,300.0	1.95	237.56	11,296.1	-122.3	-192.4	-115.1	0.00	0.00	0.00	
11,400.0	1.95	237.56	11,396.1	-124.2	-195.3	-116.8	0.00	0.00	0.00	
11,500.0	1.95	237.56	11,496.0	-126.0	-198.2	-118.6	0.00	0.00	0.00	
11,600.0	1.95	237.56	11,596.0	-127.8	-201.1	-120.3	0.00	0.00	0.00	
11,696.0	1.95	237.56	11,692.0	-129.6	-203.8	-121.9	0.00	0.00	0.00	
11,700.0	1.77	248.48	11,695.9	-129.6	-203.9	-122.0	10.00	-4.49	275.92	
11,750.0	4.66	338.85	11,745.8	-128.0	-205.4	-120.3	10.00	5.79	180.75	
11,800.0	9.51	349.64	11,795.4	-122.0	-206.9	-114.3	10.00	9.68	21.58	
11,850.0	14.46	353.14	11,844.3	-111.8	-208.3	-104.0	10.00	9.90	6.99	
11,900.0	19.43	354.88	11,892.2	-97.3	-209.8	-89.5	10.00	9.95	3.47	
11,950.0	24.42	355.92	11,938.5	-78.7	-211.3	-70.8	10.00	9.97	2.10	
12,000.0	29.40	356.63	11,983.1	-56.1	-212.8	-48.2	10.00	9.98	1.42	
12,050.0	34.40	357.15	12,025.5	-29.7	-214.2	-21.8	10.00	9.99	1.04	
12,100.0	39.39	357.56	12,065.5	0.2	-215.6	8.2	10.00	9.99	0.80	
12,150.0	44.39	357.88	12,102.7	33.6	-216.9	41.6	10.00	9.99	0.65	
12,200.0	49.38	358.15	12,136.9	70.1	-218.2	78.1	10.00	9.99	0.54	
12,250.0	54.38	358.39	12,167.7	109.4	-219.3	117.4	10.00	9.99	0.47	
12,300.0	59.38	358.59	12,195.1	151.2	-220.4	159.3	10.00	9.99	0.41	
12,335.8	62.96	358.73	12,212.3	182.6	-221.2	190.6	10.00	9.99	0.38	
FTP (Braswell 16 ST COM #706H)										
12,350.0	64.37	358.78	12,218.6	195.3	-221.5	203.3	10.00	9.99	0.36	
12,400.0	69.37	358.95	12,238.2	241.2	-222.4	249.3	10.00	10.00	0.34	
12,450.0	74.37	359.11	12,253.8	288.7	-223.2	296.8	10.00	10.00	0.32	
12,500.0	79.37	359.26	12,265.2	337.4	-223.9	345.4	10.00	10.00	0.30	
12,550.0	84.36	359.41	12,272.2	386.9	-224.4	394.9	10.00	10.00	0.29	
12,600.0	89.36	359.55	12,275.0	436.8	-224.9	444.8	10.00	10.00	0.29	
12,606.4	90.00	359.57	12,275.0	443.2	-224.9	451.2	10.00	10.00	0.29	
12,700.0	90.00	359.57	12,275.0	536.8	-225.6	544.8	0.00	0.00	0.00	
12,800.0	90.00	359.57	12,275.0	636.8	-226.4	644.7	0.00	0.00	0.00	
12,900.0	90.00	359.57	12,275.0	736.8	-227.1	744.7	0.00	0.00	0.00	
13,000.0	90.00	359.57	12,275.0	836.8	-227.9	844.6	0.00	0.00	0.00	
13,100.0	90.00	359.57	12,275.0	936.8	-228.6	944.6	0.00	0.00	0.00	
13,200.0	90.00	359.57	12,275.0	1,036.8	-229.4	1,044.5	0.00	0.00	0.00	
13,300.0	90.00	359.57	12,275.0	1,136.8	-230.1	1,144.5	0.00	0.00	0.00	
13,400.0	90.00	359.57	12,275.0	1,236.8	-230.9	1,244.5	0.00	0.00	0.00	
13,500.0	90.00	359.57	12,275.0	1,336.8	-231.6	1,344.4	0.00	0.00	0.00	
13,600.0	90.00	359.57	12,275.0	1,436.8	-232.4	1,444.4	0.00	0.00	0.00	
13,700.0	90.00	359.57	12,275.0	1,536.8	-233.1	1,544.3	0.00	0.00	0.00	
13,800.0	90.00	359.57	12,275.0	1,636.8	-233.9	1,644.3	0.00	0.00	0.00	
13,900.0	90.00	359.57	12,275.0	1,736.8	-234.6	1,744.2	0.00	0.00	0.00	
14,000.0	90.00	359.57	12,275.0	1,836.7	-235.4	1,844.2	0.00	0.00	0.00	
14,100.0	90.00	359.57	12,275.0	1,936.7	-236.1	1,944.2	0.00	0.00	0.00	
14,200.0	90.00	359.57	12,275.0	2,036.7	-236.9	2,044.1	0.00	0.00	0.00	
14,300.0	90.00	359.57	12,275.0	2,136.7	-237.7	2,144.1	0.00	0.00	0.00	
14,400.0	90.00	359.57	12,275.0	2,236.7	-238.4	2,244.0	0.00	0.00	0.00	
14,500.0	90.00	359.57	12,275.0	2,336.7	-239.2	2,344.0	0.00	0.00	0.00	
14,600.0	90.00	359.57	12,275.0	2,436.7	-239.9	2,443.9	0.00	0.00	0.00	



EOG Resources, Inc.

Planning Report

Database:	EDM 5000.1 Single User Db	Local Co-ordinate Reference:	Well #706H
Company:	EOG Resources - Midland	TVD Reference:	KB = 25' @ 3296.0usft
Project:	Lea County, NM (NAD 27 NME)	MD Reference:	KB = 25' @ 3296.0usft
Site:	Braswell 16 State Com	North Reference:	Grid
Well:	#706H	Survey Calculation Method:	Minimum Curvature
Wellbore:	OH		
Design:	Plan #.01		

Planned Survey									
Measured Depth (usft)	Inclination (°)	Azimuth (°)	Vertical Depth (usft)	+N/-S (usft)	+E/-W (usft)	Vertical Section (usft)	Dogleg Rate (°/100usft)	Build Rate (°/100usft)	Turn Rate (°/100usft)
14,700.0	90.00	359.57	12,275.0	2,536.7	-240.7	2,543.9	0.00	0.00	0.00
14,800.0	90.00	359.57	12,275.0	2,636.7	-241.4	2,643.8	0.00	0.00	0.00
14,900.0	90.00	359.57	12,275.0	2,736.7	-242.2	2,743.8	0.00	0.00	0.00
15,000.0	90.00	359.57	12,275.0	2,836.7	-242.9	2,843.8	0.00	0.00	0.00
15,100.0	90.00	359.57	12,275.0	2,936.7	-243.7	2,943.7	0.00	0.00	0.00
15,200.0	90.00	359.57	12,275.0	3,036.7	-244.4	3,043.7	0.00	0.00	0.00
15,300.0	90.00	359.57	12,275.0	3,136.7	-245.2	3,143.6	0.00	0.00	0.00
15,400.0	90.00	359.57	12,275.0	3,236.7	-245.9	3,243.6	0.00	0.00	0.00
15,500.0	90.00	359.57	12,275.0	3,336.7	-246.7	3,343.5	0.00	0.00	0.00
15,600.0	90.00	359.57	12,275.0	3,436.7	-247.4	3,443.5	0.00	0.00	0.00
15,700.0	90.00	359.57	12,275.0	3,536.7	-248.2	3,543.5	0.00	0.00	0.00
15,800.0	90.00	359.57	12,275.0	3,636.7	-248.9	3,643.4	0.00	0.00	0.00
15,900.0	90.00	359.57	12,275.0	3,736.7	-249.7	3,743.4	0.00	0.00	0.00
16,000.0	90.00	359.57	12,275.0	3,836.7	-250.4	3,843.3	0.00	0.00	0.00
16,100.0	90.00	359.57	12,275.0	3,936.7	-251.2	3,943.3	0.00	0.00	0.00
16,200.0	90.00	359.57	12,275.0	4,036.7	-251.9	4,043.2	0.00	0.00	0.00
16,300.0	90.00	359.57	12,275.0	4,136.7	-252.7	4,143.2	0.00	0.00	0.00
16,400.0	90.00	359.57	12,275.0	4,236.7	-253.4	4,243.2	0.00	0.00	0.00
16,500.0	90.00	359.57	12,275.0	4,336.7	-254.2	4,343.1	0.00	0.00	0.00
16,600.0	90.00	359.57	12,275.0	4,436.7	-254.9	4,443.1	0.00	0.00	0.00
16,700.0	90.00	359.57	12,275.0	4,536.7	-255.7	4,543.0	0.00	0.00	0.00
16,800.0	90.00	359.57	12,275.0	4,636.7	-256.4	4,643.0	0.00	0.00	0.00
16,900.0	90.00	359.57	12,275.0	4,736.7	-257.2	4,742.9	0.00	0.00	0.00
17,000.0	90.00	359.57	12,275.0	4,836.7	-257.9	4,842.9	0.00	0.00	0.00
17,100.0	90.00	359.57	12,275.0	4,936.7	-258.7	4,942.8	0.00	0.00	0.00
17,200.0	90.00	359.57	12,275.0	5,036.7	-259.4	5,042.8	0.00	0.00	0.00
17,300.0	90.00	359.57	12,275.0	5,136.7	-260.2	5,142.8	0.00	0.00	0.00
17,400.0	90.00	359.57	12,275.0	5,236.7	-260.9	5,242.7	0.00	0.00	0.00
17,500.0	90.00	359.57	12,275.0	5,336.6	-261.7	5,342.7	0.00	0.00	0.00
17,600.0	90.00	359.57	12,275.0	5,436.6	-262.4	5,442.6	0.00	0.00	0.00
17,700.0	90.00	359.57	12,275.0	5,536.6	-263.2	5,542.6	0.00	0.00	0.00
17,800.0	90.00	359.57	12,275.0	5,636.6	-263.9	5,642.5	0.00	0.00	0.00
17,900.0	90.00	359.57	12,275.0	5,736.6	-264.7	5,742.5	0.00	0.00	0.00
18,000.0	90.00	359.57	12,275.0	5,836.6	-265.4	5,842.5	0.00	0.00	0.00
18,100.0	90.00	359.57	12,275.0	5,936.6	-266.2	5,942.4	0.00	0.00	0.00
18,200.0	90.00	359.57	12,275.0	6,036.6	-266.9	6,042.4	0.00	0.00	0.00
18,300.0	90.00	359.57	12,275.0	6,136.6	-267.7	6,142.3	0.00	0.00	0.00
18,400.0	90.00	359.57	12,275.0	6,236.6	-268.4	6,242.3	0.00	0.00	0.00
18,500.0	90.00	359.57	12,275.0	6,336.6	-269.2	6,342.2	0.00	0.00	0.00
18,600.0	90.00	359.57	12,275.0	6,436.6	-269.9	6,442.2	0.00	0.00	0.00
18,700.0	90.00	359.57	12,275.0	6,536.6	-270.7	6,542.2	0.00	0.00	0.00
18,800.0	90.00	359.57	12,275.0	6,636.6	-271.4	6,642.1	0.00	0.00	0.00
18,900.0	90.00	359.57	12,275.0	6,736.6	-272.2	6,742.1	0.00	0.00	0.00
19,000.0	90.00	359.57	12,275.0	6,836.6	-272.9	6,842.0	0.00	0.00	0.00
19,100.0	90.00	359.57	12,275.0	6,936.6	-273.7	6,942.0	0.00	0.00	0.00
19,200.0	90.00	359.57	12,275.0	7,036.6	-274.4	7,041.9	0.00	0.00	0.00
19,300.0	90.00	359.57	12,275.0	7,136.6	-275.2	7,141.9	0.00	0.00	0.00
19,400.0	90.00	359.57	12,275.0	7,236.6	-275.9	7,241.8	0.00	0.00	0.00
19,500.0	90.00	359.57	12,275.0	7,336.6	-276.7	7,341.8	0.00	0.00	0.00
19,600.0	90.00	359.57	12,275.0	7,436.6	-277.4	7,441.8	0.00	0.00	0.00
19,676.4	90.00	359.57	12,275.0	7,513.0	-278.0	7,518.1	0.00	0.00	0.00
PBHL (Braswell 16 ST COM #706H)									



EOG Resources, Inc.

Planning Report

Database:	EDM 5000.1 Single User Db	Local Co-ordinate Reference:	Well #706H
Company:	EOG Resources - Midland	TVD Reference:	KB = 25' @ 3296.0usft
Project:	Lea County, NM (NAD 27 NME)	MD Reference:	KB = 25' @ 3296.0usft
Site:	Braswell 16 State Com	North Reference:	Grid
Well:	#706H	Survey Calculation Method:	Minimum Curvature
Wellbore:	OH		
Design:	Plan #.01		

Design Targets									
Target Name									
- hit/miss target	Dip Angle	Dip Dir.	TVD	+N/-S	+E/-W	Northing	Easting	Latitude	Longitude
- Shape	(°)	(°)	(usft)	(usft)	(usft)	(usft)	(usft)		
PBHL (Braswell 16 ST C	0.00	0.00	12,275.0	7,513.0	-278.0	385,373.00	733,395.00	32° 3' 26.160 N	103° 34' 47.907 W
- plan hits target center									
- Point									
FTP (Braswell 16 ST CC	0.00	0.00	12,275.0	149.0	-223.0	378,009.00	733,450.00	32° 2' 13.283 N	103° 34' 47.865 W
- plan misses target center by 71.1usft at 12335.8usft MD (12212.3 TVD, 182.6 N, -221.2 E)									
- Point									