



602 Park Point Dr, Suite 200
Golden, CO 80401

New Mexico Oil Conservation Division, District II
Attn: **Amalia Bustamante**
811 S. First Street
Artesia, NM 88210

March 30th, 2019

RE: C-104 Package – Zeus State 228H

Mrs. Bustamante,

Please find attached a C-104 packet for the Zeus State 228H well (API# 30-025-44525). To make things as easy as possible for your review, I have listed all the documents included in this packet below. The C-103 for Spud, Casing and Cement, and drilling have already been submitted to the NMOCD. I have included form(s) that needed amending in this packet such as the completion report.

Please let me know if you have any questions or need further documentation. I can be reached at (720)360-4028 or bramsey@taprk.com.

Regards,

A handwritten signature in black ink, appearing to read "Ramsey", is written above the typed name.

Bill Ramsey
Regulatory Analyst
Tap Rock Operating, LLC
(720)360-4028
bramsey@taprk.com

Enclosures:

Form C-104
Form C-102
Form C-105

District I
1625 N. French Dr., Hobbs, NM 88240
District II
811 S. First St., Artesia, NM 88210
District III
1000 Rio Brazos Rd., Aztec, NM 87410
District IV
1220 S. St. Francis Dr., Santa Fe, NM 87505

State of New Mexico
Energy, Minerals & Natural Resources

Oil Conservation Division
1220 South St. Francis Dr.
Santa Fe, NM 87505

Form C-104
Revised August 1, 2011

Submit one copy to appropriate District Office

☒ AMENDED REPORT

I. REQUEST FOR ALLOWABLE AND AUTHORIZATION TO TRANSPORT

¹ Operator name and Address TAP ROCK OPERATING, LLC 602 PARK POINT DR, STE 200 GOLDEN, CO 80401		² OGRID Number 372043
		³ Reason for Filing Code/ Effective Date NW
⁴ API Number 30-025-44525	⁵ Pool Name WC-05 G-09 S243310P: UPPER WOLFCAMP	⁶ Pool Code 98135
⁷ Property Code 320719	⁸ Property Name Zeus 24S33E0909 State	⁹ Well Number 228H

II. ¹⁰ Surface Location

UI or lot no. P	Section 9	Township 24S	Range 33E	Lot Idn P	Feet from the 877	North/South Line South	Feet from the 191	East/West line East	County LEA
--------------------	--------------	-----------------	--------------	--------------	----------------------	---------------------------	----------------------	------------------------	---------------

¹¹ Bottom Hole Location

UI or lot no. A	Section 9	Township 24S	Range 33E	Lot Idn A	Feet from the 200	North/South Line North	Feet from the 388	East/West line East	County LEA
¹² Lse Code	¹³ Producing Method Code F	¹⁴ Gas Connection Date Oct 2018	¹⁵ C-129 Permit Number	¹⁶ C-129 Effective Date	¹⁷ C-129 Expiration Date				

III. Oil and Gas Transporters


¹⁸ Transporter OGRID	¹⁹ Transporter Name and Address	²⁰ O/G/W
214754	ENLINK MIDSTREAM OPERATING, LP 1722 ROUTH ST. SUITE 1300 DALLAS, TX 75201	O
371960	LUCID ENERGY GROUP 3100 MCKINNON ST #800 DALLAS, TX 75201	G

IV. Well Completion Data

²¹ Spud Date 04/2/2018	²² Ready Date 9/29/2018	²³ TD 18069'	²⁴ PBTD N/A	²⁵ Perforations 13323' – 17868'	²⁶ DHC, MC
²⁷ Hole Size	²⁸ Casing & Tubing Size	²⁹ Depth Set	³⁰ Sacks Cement		
17.5"	13-3/8"	1348	1157		
12-1/4"	9-5/8"	5077	1678		
8-3/4"	7-5/8"	12520	647		
6-3/4"	5-1/2"	12417	0		
6-3/4"	5"	18066	801		

V. Well Test Data

³¹ Date New Oil 9/29/2018	³² Gas Delivery Date 9/29/2018	³³ Test Date 10/8/2018	³⁴ Test Length 24 hrs	³⁵ Tbg. Pressure N/A	³⁶ Csg. Pressure 1650
³⁷ Choke Size 64/64	³⁸ Oil 1231 Bbls.	³⁹ Water 2532 Bbls.	⁴⁰ Gas 3111 Mcf.		⁴¹ Test Method F

⁴² I hereby certify that the rules of the Oil Conservation Division have been complied with and that the information given above is true and complete to the best of my knowledge and belief. Signature: 	OIL CONSERVATION DIVISION Approved by: Patricia Martinez
Printed name: Bill Ramsey	Title: LM
Title: Regulatory Analyst	Approval Date: 4/8/2020
E-mail Address: bramsey@taprk.com	
Date: 3/10/2020	Phone: 720 360 4028

District I
1625 N. French Dr., Hobbs, NM 88240
Phone: (505) 393-6161 Fax: (505) 393-0720
District II
811 S. First St., Artesia, NM 88210
Phone: (505) 748-1283 Fax: (505) 748-9720
District III
1000 Rio Brazos Road, Aztec, NM 87410
Phone: (505) 334-6178 Fax: (505) 334-6170
District IV
1220 S. St. Francis Dr., Santa Fe, NM 87505
Phone: (505) 476-3460 Fax: (505) 476-3462

State of New Mexico
Energy, Minerals & Natural Resources
Department
OIL CONSERVATION DIVISION
1220 South St. Francis Dr.
Santa Fe, NM 87505

FORM C-102

Revised August 1, 2011

Submit one copy to appropriate

District Office

☒ AMENDED REPORT

AS DRILLED

WELL LOCATION AND ACREAGE DEDICATION PLAT

¹ API Number 30-025-44525	² Pool Code 98135	³ Pool Name WC-025 G-09 S243310P; UPPER WOLFCAMP
⁴ Property Code 320719	⁵ Property Name ZEUS UNIT 24S33E0909	⁶ Well Number 228H
⁷ OGRID No. #372043	⁸ Operator Name TAP ROCK OPERATING, LLC.	⁹ Elevation 3614'

¹⁰Surface Location

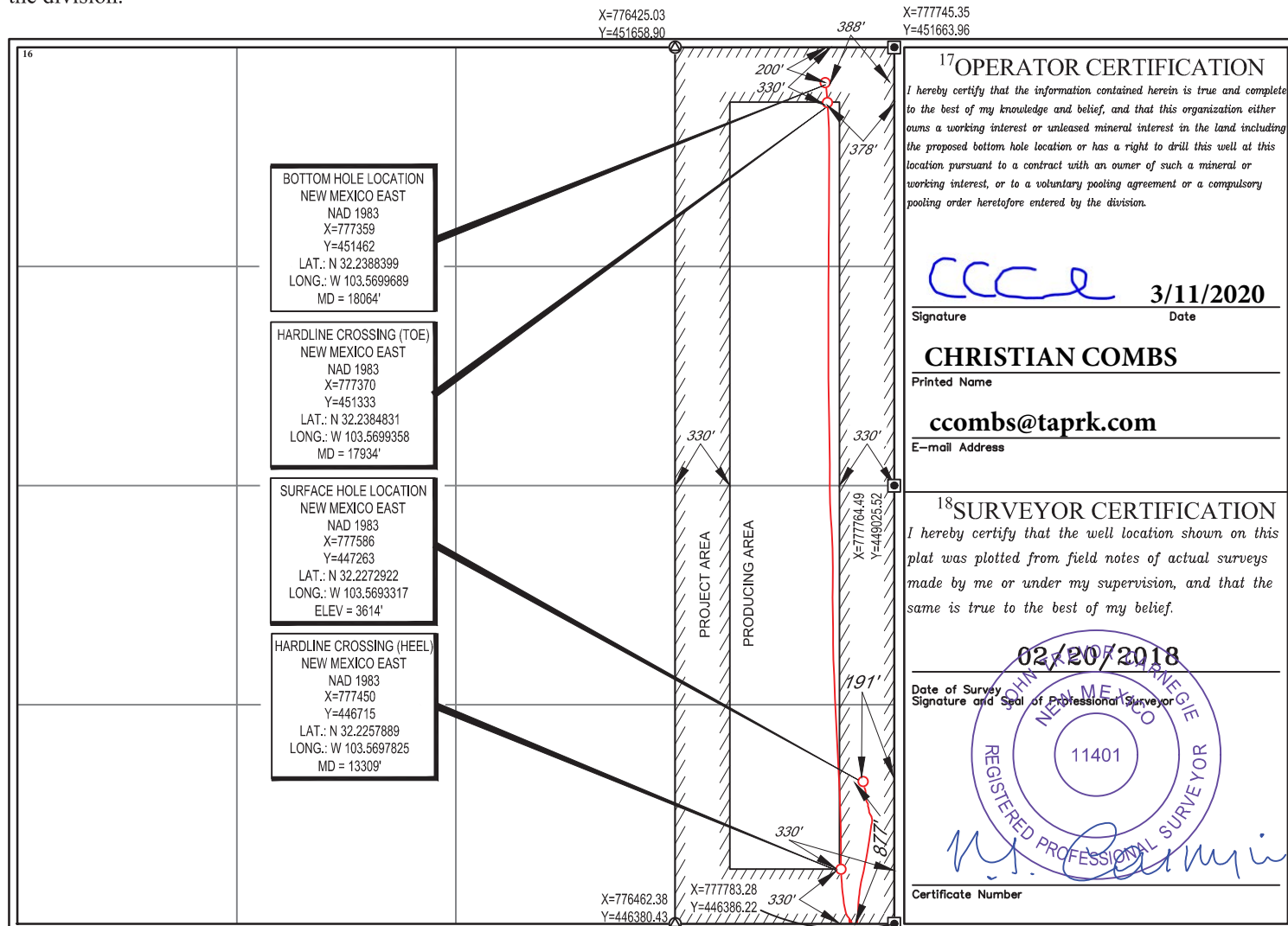
UL or lot no. P	Section 9	Township 24-S	Range 33-E	Lot Idn -	Feet from the 877'	North/South line SOUTH	Feet from the 191'	East/West line EAST	County LEA
---------------------------	---------------------	-------------------------	----------------------	---------------------	------------------------------	----------------------------------	------------------------------	-------------------------------	----------------------

¹¹Bottom Hole Location If Different From Surface

UL or lot no. A	Section 9	Township 24-S	Range 33-E	Lot Idn -	Feet from the 200'	North/South line NORTH	Feet from the 388'	East/West line EAST	County LEA
---------------------------	---------------------	-------------------------	----------------------	---------------------	------------------------------	----------------------------------	------------------------------	-------------------------------	----------------------

¹² Dedicated Acres	¹³ Joint or Infill	¹⁴ Consolidation Code	¹⁵ Order No.
-------------------------------	-------------------------------	----------------------------------	-------------------------

No allowable will be assigned to this completion until all interests have been consolidated or a non-standard unit has been approved by the division.



Submit To Appropriate District Office
Two Copies
District I
1625 N. French Dr., Hobbs, NM 88240
District II
811 S. First St., Artesia, NM 88210
District III
1000 Rio Brazos Rd., Aztec, NM 87410
District IV
1220 S. St. Francis Dr., Santa Fe, NM 87505

HOBBS OGD

State of New Mexico
Minerals and Natural Resources

OCT 24 2018 Oil Conservation Division
1220 South St. Francis Dr.
Santa Fe, NM 87505

Form C-105
Revised April 3, 2017

1. WELL API NO.
30-025-44525
2. Type of Lease
☒ STATE ☐ FEE ☐ FED/INDIAN
3. State Oil & Gas Lease No.
320719

WELL COMPLETION OR RECOMPLETION REPORT AND LOG

4. Reason for filing:

☒ **COMPLETION REPORT** (Fill in boxes #1 through #31 for State and Fee wells only)

☐ **C-144 CLOSURE ATTACHMENT** (Fill in boxes #1 through #9, #15 Date Rig Released and #32 and/or #33; attach this and the plat to the C-144 closure report in accordance with 19.15.17.13.K NMAC)

7. Type of Completion:

☒ NEW WELL ☐ WORKOVER ☐ DEEPENING ☐ PLUGBACK ☐ DIFFERENT RESERVOIR ☐ OTHER

8. Name of Operator

TAP ROCK OPERATING, LLC

9. OGRID

372043

10. Address of Operator

602 PARK POINT DR, STE 200 GOLDEN, CO 80401

11. Pool name or Wildcat

WC-05 G-09 S243310P: UPPER WOLFCAMP

12. Location	Unit Ltr	Section	Township	Range	Lot	Feet from the	N/S Line	Feet from the	E/W Line	County
Surface:	P	9	24S	33E	P	877	South	191	East	LEA
BH:	A	9	24S	33E	A	200	North	388	East	LEA

13. Date Spudded
4/2/2018

14. Date T.D. Reached
6/8/2018

15. Date Rig Released
6/12/2018

16. Date Completed (Ready to Produce)
8/26/18
Correct: 9/29/2018

17. Elevations (DF and RKB,
RT, GR, etc.)
3614 GE

18. Total Measured Depth of Well
18,069'

19. Plug Back Measured Depth
N/A

20. Was Directional Survey Made?
YES

21. Type Electric and Other Logs Run
Gamma

22. Producing Interval(s), of this completion - Top, Bottom, Name
13323', 17868', UPPER WOLFCAMP

23. CASING RECORD (Report all strings set in well)

CASING SIZE	WEIGHT LB./FT.	DEPTH SET	HOLE SIZE	CEMENTING RECORD	AMOUNT PULLED
13-3/8"	54.5#	1,348'	17.5"	1157	
9-5/8"	40#	5,077'	12-1/4"	1678	
7-5/8"	29.7#	12,520'	8-3/4"	647	
5-1/2"	20#	12,417'	6-3/4"		
5"	18#	18,066'	6-3/4"	801	

25. TUBING RECORD

SIZE	TOP	BOTTOM	SACKS CEMENT	SCREEN	SIZE	DEPTH SET	PACKER SET

26. Perforation record (interval, size, and number)
13323' - 17868', 0.4", 39

27. ACID. SHOT, FRACTURE, CEMENT, SQUEEZE, ETC.

DEPTH INTERVAL	AMOUNT AND KIND MATERIAL USED
13323' - 17868'	11581920 lbs 100 mesh sand

28. PRODUCTION

Date First Production

9/29/18

Production Method (Flowing, gas lift, pumping - Size and type pump)
Flowing

Well Status (Prod. or Shut-in)
Producing

Date of Test
10/8/18

Hours Tested
24

Choke Size
64/64

Prod'n For
Test Period

Oil - Bbl
1231

Gas - MCF
3111

Water - Bbl.
2532

Gas - Oil Ratio
2527.21

Flow Tubing
Press.

Casing Pressure
1650

Calculated 24-
Hour Rate

Oil - Bbl.
1231

Gas - MCF
3111

Water - Bbl.
2532

Oil Gravity - API - (Corr.)
48.9

29. Disposition of Gas (Sold, used for fuel, vented, etc.)
Sold

30. Test Witnessed By
Clay Poole

31. List Attachments

32. If a temporary pit was used at the well, attach a plat with the location of the temporary pit.

33. Rig Release Date:

34. If an on-site burial was used at the well, report the exact location of the on-site burial:

Latitude

Longitude

NAD83

I hereby certify that the information shown on both sides of this form is true and complete to the best of my knowledge and belief

Signature John W. Masenheimer
E-mail Address jmasenheimer@taprk.com

Printed

Name John Masenheimer

Title Operations Technician

Date 10/27/18

30-025-44525

INSTRUCTIONS

This form is to be filed with the appropriate District Office of the Division not later than 20 days after the completion of any newly-drilled or deepened well and not later than 60 days after completion of closure. When submitted as a completion report, this shall be accompanied by one copy of all electrical and radio-activity logs run on the well and a summary of all special tests conducted, including drill stem tests. All depths reported shall be measured depths. In the case of directionally drilled wells, true vertical depths shall also be reported. For multiple completions, items 11, 12 and 26-31 shall be reported for each zone.

INDICATE FORMATION TOPS IN CONFORMANCE WITH GEOGRAPHICAL SECTION OF STATE

Southeastern New Mexico		Northwestern New Mexico	
T. Anhy 1317	T. Canyon 7726	T. Ojo Alamo	T. Penn A"
T. Salt 1377	T. Strawn	T. Kirtland	T. Penn. "B"
B. Salt 4987	T. Atoka	T. Fruitland	T. Penn. "C"
T. Yates	T. Miss	T. Pictured Cliffs	T. Penn. "D"
T. 7 Rivers	T. Devonian	T. Cliff House	T. Leadville
T. Queen	T. Silurian	T. Menefee	T. Madison
T. Grayburg	T. Montoya	T. Point Lookout	T. Elbert
T. San Andres	T. Simpson	T. Mancos	T. McCracken
T. Glorieta	T. McKee	T. Gallup	T. Ignacio Otzte
T. Paddock	T. Ellenburger	Base Greenhorn	T. Granite
T. Blinebry	T. Gr. Wash	T. Dakota	
T. Tubb	T. Delaware Sand	T. Morrison	
T. Drinkard	T. Bone Springs 9120	T. Todilto	
T. Abo	T.	T. Entrada	
T. Wolfcamp 12351	T.	T. Wingate	
T. Penn	T.	T. Chinle	
T. Cisco (Bough C)	T.	T. Permian	

OIL OR GAS SANDS OR ZONES

No. 1, from.....to.....

No. 3, from.....to.....

No. 2, from.....to.....

No. 4, from.....to.....

IMPORTANT WATER SANDS

Include data on rate of water inflow and elevation to which water rose in hole.

No. 1, from.....to.....feet.....

No. 2, from.....to.....feet.....

No. 3, from.....to.....feet.....

LITHOLOGY RECORD (Attach additional sheet if necessary)

From	To	Thickness In Feet	Lithology	From	To	Thickness In Feet	Lithology
------	----	----------------------	-----------	------	----	----------------------	-----------

HOB

OCT 24 2018

RECEIVED