

District I  
1625 N. French Dr., Hobbs, NM 88240  
Phone: (575) 393-6161 Fax: (575) 393-0720  
District II  
811 S. First St., Artesia, NM 88210  
Phone: (575) 748-1283 Fax: (575) 748-9720  
District III  
1000 Rio Brazos Road, Aztec, NM 87410  
Phone: (505) 334-6178 Fax: (505) 334-6170  
District IV  
1220 S. St. Francis Dr., Santa Fe, NM 87505  
Phone: (505) 476-3460 Fax: (505) 476-3462

State of New Mexico  
Energy, Minerals & Natural Resources Department  
OIL CONSERVATION DIVISION  
1220 South St. Francis Dr.  
Santa Fe, NM 87505

Form C-102  
Revised August 1, 2011  
Submit one copy to appropriate  
District Office

**OCD - HOBBS**  
**06/11/2020**  
**RECEIVED**

☐ AMENDED REPORT

WELL LOCATION AND ACREAGE DEDICATION PLAT

|  |  |   |
|--|--|---|
| <sup>1</sup> API Number<br><b>30-025-47332</b> | <sup>2</sup> Pool Code<br><b>98228</b>                         | <sup>3</sup> Pool Name<br><b>WC-025 G-09 S253536D; UPR WOLFCAMP</b> |
| <sup>4</sup> Property Code<br><b>XXXXXX</b>    | <sup>5</sup> Property Name<br><b>SIOUX 25-36 STATE FED COM</b> | <sup>6</sup> Well Number<br><b>2H</b>                               |
| <sup>7</sup> OGRID No.<br><b>249099</b>        | <sup>8</sup> Operator Name<br><b>CAZA OPERATING LLC</b>        | <sup>9</sup> Elevation<br><b>3080'</b>                              |

<sup>10</sup> Surface Location

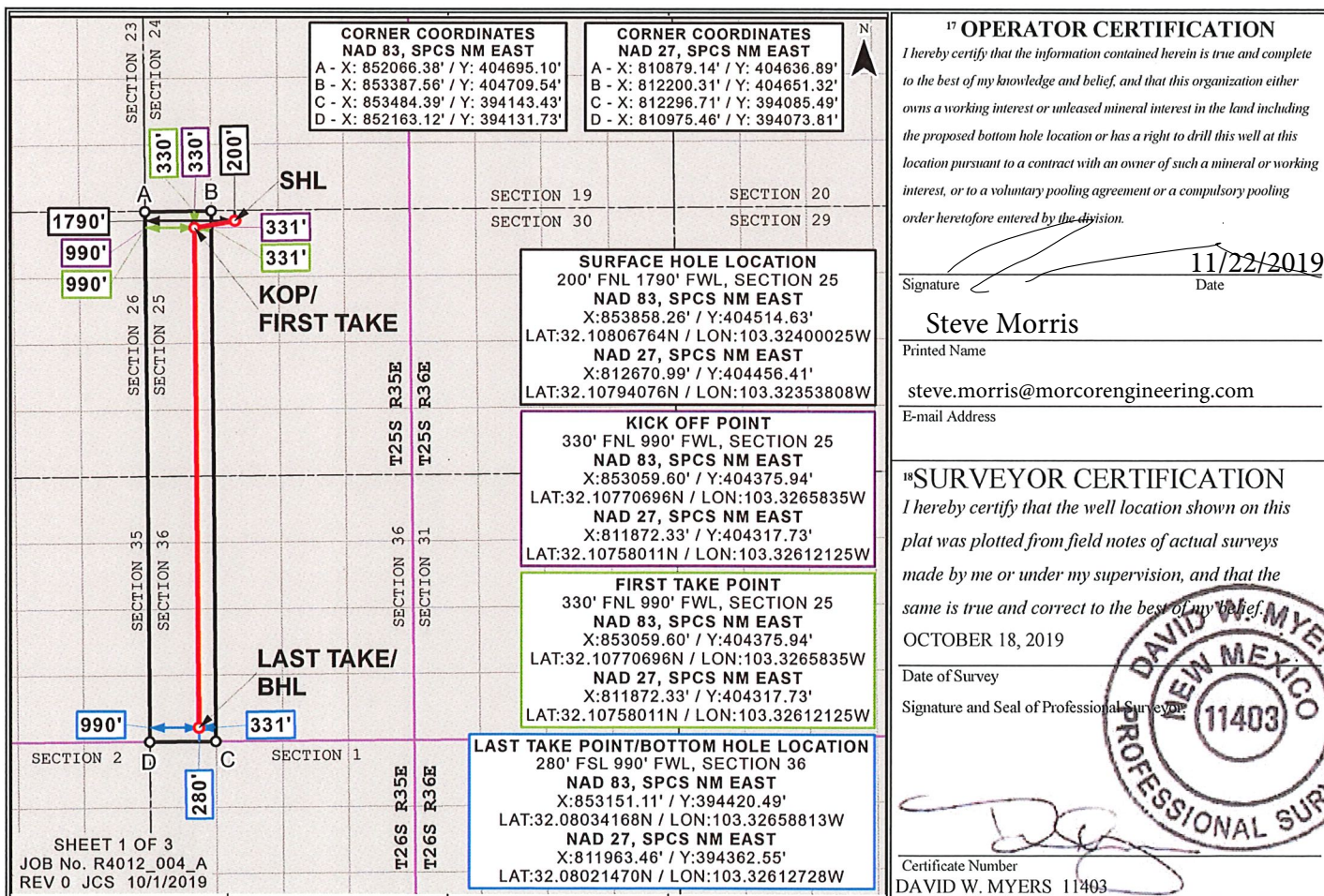
| UL or lot no. | Section | Township | Range | Lot Idn | Feet from the | North/South line | Feet from the | East/West line | County |
|---------------|---------|----------|-------|---------|---------------|------------------|---------------|----------------|--------|
| C             | 25      | 25S      | 35E   |         | 200           | NORTH            | 1790          | WEST           | LEA    |

<sup>11</sup> Bottom Hole Location If Different From Surface

| UL or lot no. | Section | Township | Range | Lot Idn | Feet from the | North/South line | Feet from the | East/West line | County |
|---------------|---------|----------|-------|---------|---------------|------------------|---------------|----------------|--------|
| M             | 36      | 25S      | 35E   |         | 280           | SOUTH            | 990           | WEST           | LEA    |

|   |                               |                                  |                         |
|---|-------------------------------|----------------------------------|-------------------------|
| <sup>12</sup> Dedicated Acres<br><b>320.0</b> | <sup>13</sup> Joint or Infill | <sup>14</sup> Consolidation Code | <sup>15</sup> Order No. |
|---|-------------------------------|----------------------------------|-------------------------|

No allowable will be assigned to this completion until all interests have been consolidated or a non-standard unit has been approved by the division.



Distances/areas relative to NAD 83 Combined Scale Factor: 0.99987673 Convergence: 00°32'19.77000"