

District I
1625 N. French Dr., Hobbs, NM 88240
Phone: (575) 393-6161 Fax: (575) 393-0720
District II
811 S. First St., Artesia, NM 88210
Phone: (575) 748-1283 Fax: (575) 748-9720
District III
1000 Rio Brazos Road, Aztec, NM 87410
Phone: (505) 334-6178 Fax: (505) 334-6170
District IV
1220 S. St. Francis Dr., Santa Fe, NM 87505
Phone: (505) 476-3460 Fax: (505) 476-3462

State of New Mexico
Energy, Minerals & Natural Resources Department
OIL CONSERVATION DIVISION
1220 South St. Francis Dr.
Santa Fe, NM 87505

Form C-102
Revised August 1, 2011
Submit one copy to appropriate
District Office

☐ AMENDED REPORT

OCD - HOBBS
08/26/2020
RECEIVED

WELL LOCATION AND ACREAGE DEDICATION PLAT

¹ API Number 30-025-47630	² Pool Code 17644	³ Pool Name DIAMONDTAIL; BONE SPRING
⁴ Property Code 328507	⁵ Property Name WILD SALSA FED COM	⁶ Well Number 095H
⁷ OGRID No. 373986	⁸ Operator Name TITUS OIL & GAS PRODUCTION, LLC	⁹ Elevation 3721'

¹⁰ Surface Location

UL or lot no.	Section	Township	Range	Lot Idn	Feet from the	North/South line	Feet from the	East/West line	County
A	25	23S	32E		653	NORTH	971	EAST	LEA

¹¹ Bottom Hole Location If Different From Surface

UL or lot no.	Section	Township	Range	Lot Idn	Feet from the	North/South line	Feet from the	East/West line	County
A	13	23S	32E		10	NORTH	1320	EAST	LEA

¹² Dedicated Acres 640.0	¹³ Joint or Infill	¹⁴ Consolidation Code	¹⁵ Order No.
---	-------------------------------	----------------------------------	-------------------------

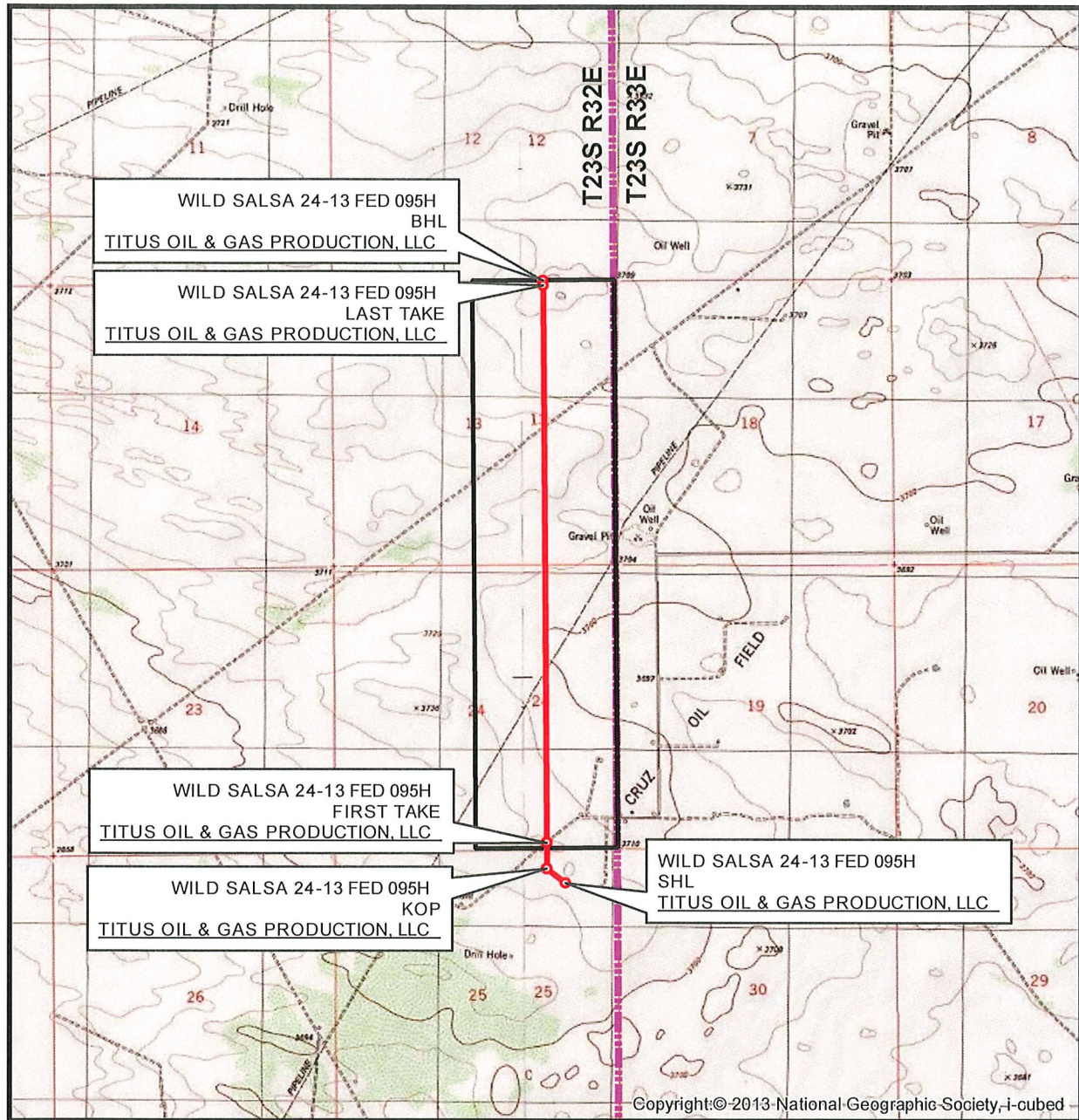
No allowable will be assigned to this completion until all interests have been consolidated or a non-standard unit has been approved by the division.

	<p>CORNER COORDINATES NAD 83, SPCS NM EAST A - X: 759171.19' / Y: 472680.34' B - X: 759134.45' / Y: 477961.80' C - X: 761782.38' / Y: 477986.48' D - X: 761818.23' / Y: 472706.48' E - X: 761853.01' / Y: 467425.38' F - X: 759208.47' / Y: 467399.07'</p>	<p>CORNER COORDINATES NAD 27, SPCS NM EAST A - X: 717987.83' / Y: 472620.78' B - X: 717951.24' / Y: 477902.09' C - X: 720599.15' / Y: 477926.77' D - X: 720634.87' / Y: 472646.92' E - X: 720669.52' / Y: 467365.97' F - X: 718024.98' / Y: 467339.66'</p>	<p>17 OPERATOR CERTIFICATION I hereby certify that the information contained herein is true and complete to the best of my knowledge and belief, and that this organization either owns a working interest or unleased mineral interest in the land including the proposed bottom hole location or has a right to drill this well at this location pursuant to a contract with an owner of such a mineral or working interest, or to a voluntary pooling agreement or a compulsory pooling order heretofore entered by the division.</p> <p>Signature: <i>Ryan DeLong</i> Date: 8/3/2020 Printed Name: Ryan DeLong - Regulatory Manager E-mail Address: rdelong@titusoil.com</p>
	<p>BOTTOM HOLE LOCATION 10' FNL 1320' FEL, SECTION 13 NAD 83, SPCS NM EAST X: 760462.53' / Y: 477964.18' LAT: 32.31200329N / LON: 103.62404663W NAD 27, SPCS NM EAST X: 719279.30' / Y: 477904.47' LAT: 32.31187988N / LON: 103.62356348W</p>		
	<p>LAST TAKE POINT 100' FNL 1320' FEL, SECTION 13 NAD 83, SPCS NM EAST X: 760463.36' / Y: 477874.18' LAT: 32.31175591N / LON: 103.62404584W NAD 27, SPCS NM EAST X: 719280.14' / Y: 477814.47' LAT: 32.31163250N / LON: 103.62356270W</p>		
	<p>FIRST TAKE POINT 100' FSL 1320' FEL, SECTION 24 NAD 83, SPCS NM EAST X: 760532.08' / Y: 467512.24' LAT: 32.28327317N / LON: 103.62404528W NAD 27, SPCS NM EAST X: 719348.59' / Y: 467452.83' LAT: 32.28314967N / LON: 103.62356314W</p>		
	<p>KICK OFF POINT 381' FNL 1320' FEL, SECTION 25 NAD 83, SPCS NM EAST X: 760534.61' / Y: 467031.25' LAT: 32.28195102N / LON: 103.62404737W NAD 27, SPCS NM EAST X: 719351.12' / Y: 466971.85' LAT: 32.28182752N / LON: 103.62356528W</p>		
<p>SURFACE HOLE LOCATION 653' FNL 971' FEL, SECTION 25 NAD 83, SPCS NM EAST X: 760884.57' / Y: 466762.73' LAT: 32.28120659N / LON: 103.62292080W NAD 27, SPCS NM EAST X: 719701.07' / Y: 466703.34' LAT: 32.28108308N / LON: 103.62243875W</p>			<p>18 SURVEYOR CERTIFICATION I hereby certify that the well location shown on this plat was plotted from field notes of actual surveys made by me or under my supervision, and that the same is true and correct to the best of my belief.</p> <p>Date of Survey: JULY 10, 2020 Signature and Seal of Professional Surveyor: <i>David W. Myers</i></p> <p>Certificate Number: DAVID W. MYERS 11403</p>

Distances/areas relative to NAD 83 Combined Scale Factor: 0.9999645 Convergence Angle: 00°22'48.65002"

☐ Horizontal Spacing Unit

LOCATION VERIFICATION MAP



SEC. 25 TWP. 23-S RGE. 32-E
SURVEY: N.M.P.M.
COUNTY: LEA
OPERATOR: TITUS OIL & GAS PRODUCTION, LLC
DESCRIPTION: 653' FNL & 971' FEL
ELEVATION: 3721'
LEASE: WILD SALSA 24-13 FED
U.S.G.S. TOPOGRAPHIC MAP: TIP TOP WELLS, NM.

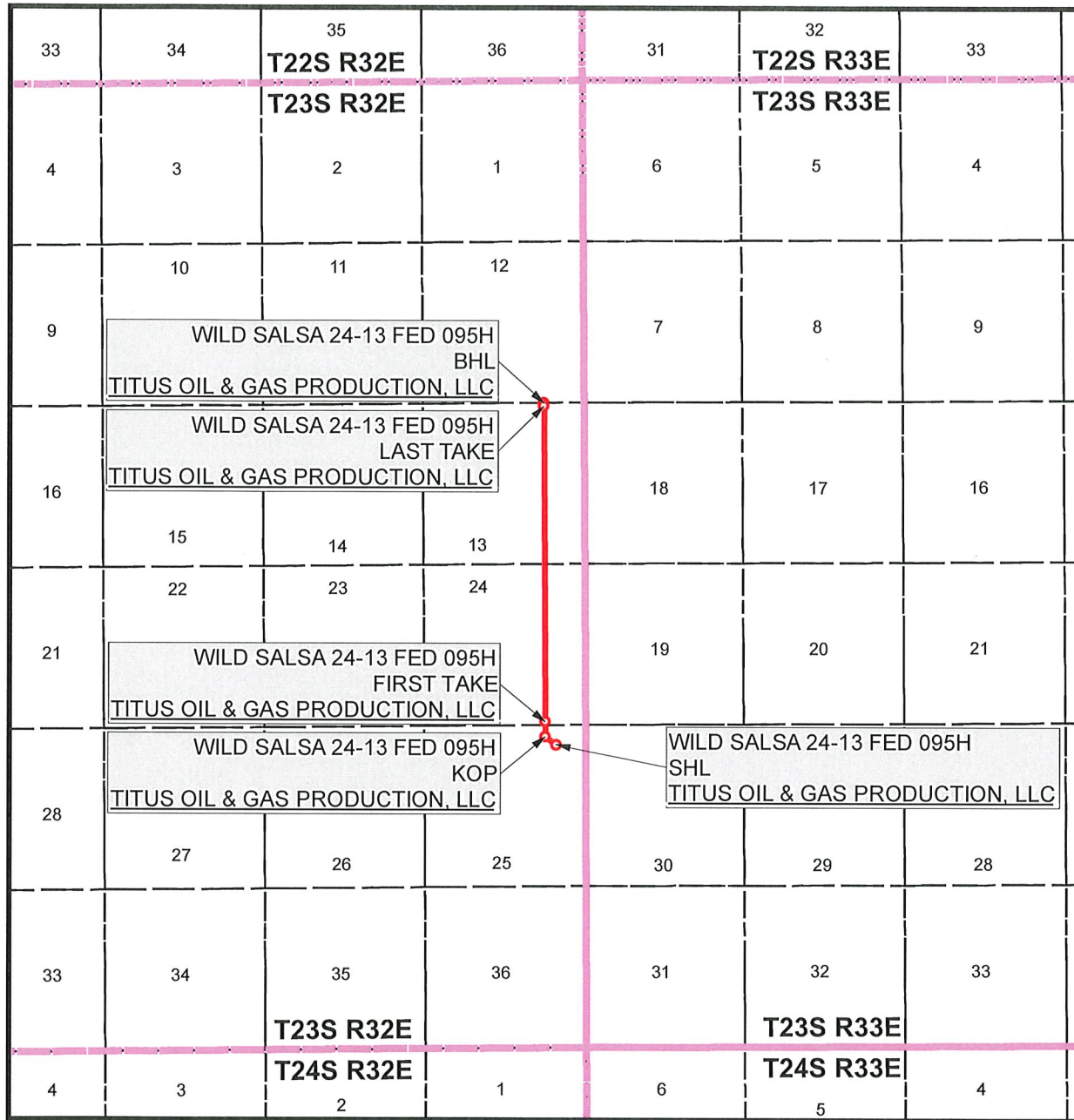
1" = 3,000'
CONTOUR INTERVAL = 10'



SHEET 2 OF 3

PREPARED BY:
R-SQUARED GLOBAL, LLC
1309 LOUISVILLE AVENUE, MONROE, LA 71201
318-323-6900 OFFICE
JOB No. R4009_001_K

VICINITY MAP



SEC. 25 TWP. 23-S RGE. 32-E

SURVEY: N.M.P.M.

COUNTY: LEA

OPERATOR: TITUS OIL & GAS PRODUCTION, LLC

DESCRIPTION: 653' FNL & 971' FEL

ELEVATION: 3721'

LEASE: WILD SALSA 24-13 FED

U.S.G.S. TOPOGRAPHIC MAP: TIP TOP WELLS, NM.

1" = 1 MILE



SHEET 3 OF 3

PREPARED BY:
R-SQUARED GLOBAL, LLC
1309 LOUISVILLE AVENUE, MONROE, LA 71201
318-323-6900 OFFICE
JOB No. R4009_001_K