

District I
1625 N. French Dr., Hobbs, NM 88240
Phone: (575) 393-6161 Fax: (575) 393-0720
District II
811 S. First St., Artesia, NM 88210
Phone: (575) 748-1283 Fax: (575) 748-9720
District III
1000 Rio Brazos Road, Aztec, NM 87410
Phone: (505) 334-6178 Fax: (505) 334-6170
District IV
1220 S. St. Francis Dr., Santa Fe, NM 87505
Phone: (505) 476-3460 Fax: (505) 476-3462

State of New Mexico
Energy, Minerals & Natural Resources Department
OIL CONSERVATION DIVISION
1220 South St. Francis Dr.
Santa Fe, NM 87505

Form C-102
Revised August 1, 2011
Submit one copy to appropriate
District Office

OCD - HOBBS
08/26/2020
RECEIVED

☐ AMENDED REPORT

WELL LOCATION AND ACREAGE DEDICATION PLAT

¹ API Number 30-025-47631	² Pool Code 17644	³ Pool Name DIAMONDTAIL; BONE SPRING
⁴ Property Code 328507	⁵ Property Name WILD SALSA FED COM	⁶ Well Number 096H
⁷ OGRID No. 373986	⁸ Operator Name TITUS OIL & GAS PRODUCTION, LLC	⁹ Elevation 3721'

¹⁰ Surface Location

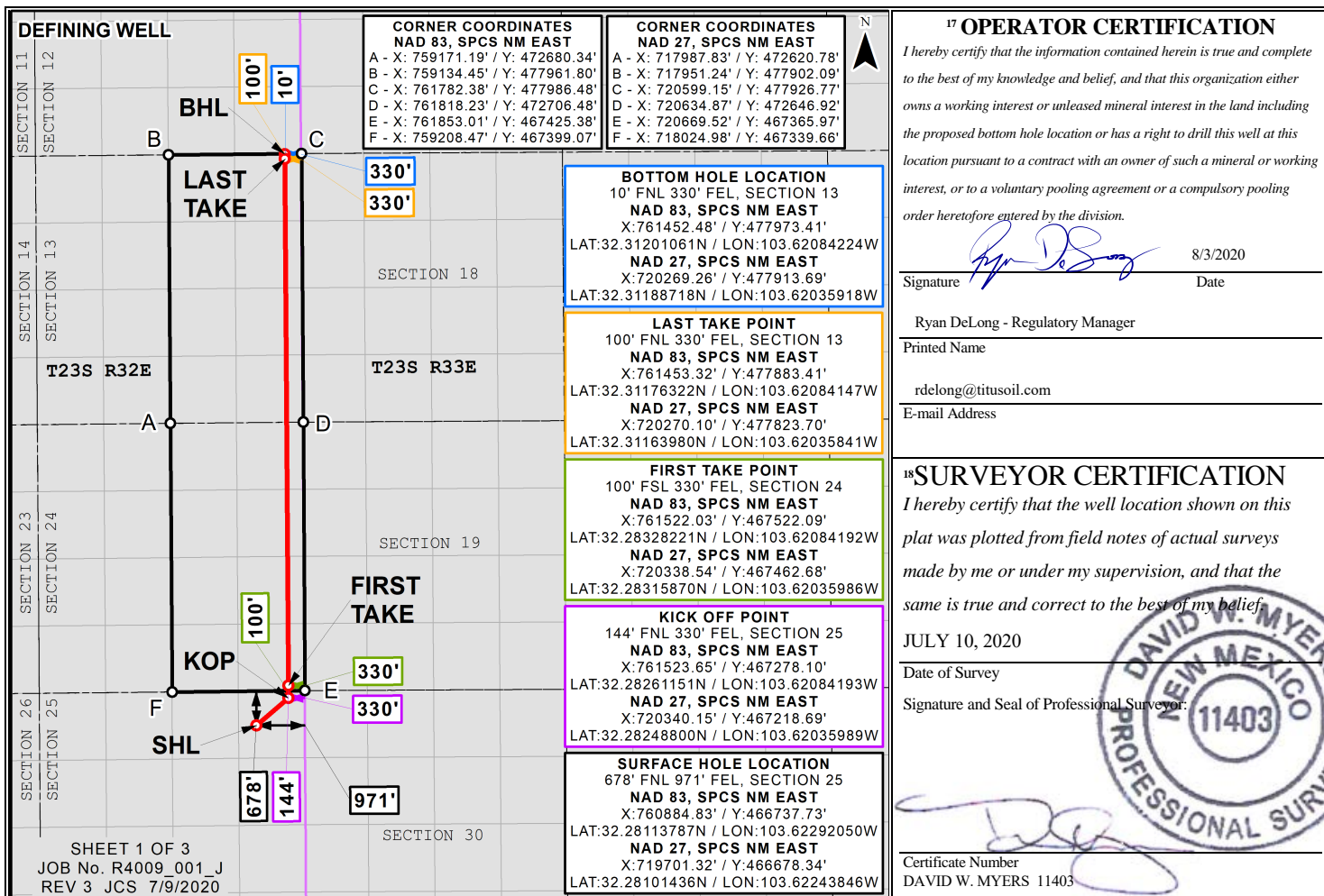
UL or lot no.	Section	Township	Range	Lot Idn	Feet from the	North/South line	Feet from the	East/West line	County
A	25	23S	32E		678	NORTH	971	EAST	LEA

¹¹ Bottom Hole Location If Different From Surface

UL or lot no.	Section	Township	Range	Lot Idn	Feet from the	North/South line	Feet from the	East/West line	County
A	13	23S	32E		10	NORTH	330	EAST	LEA

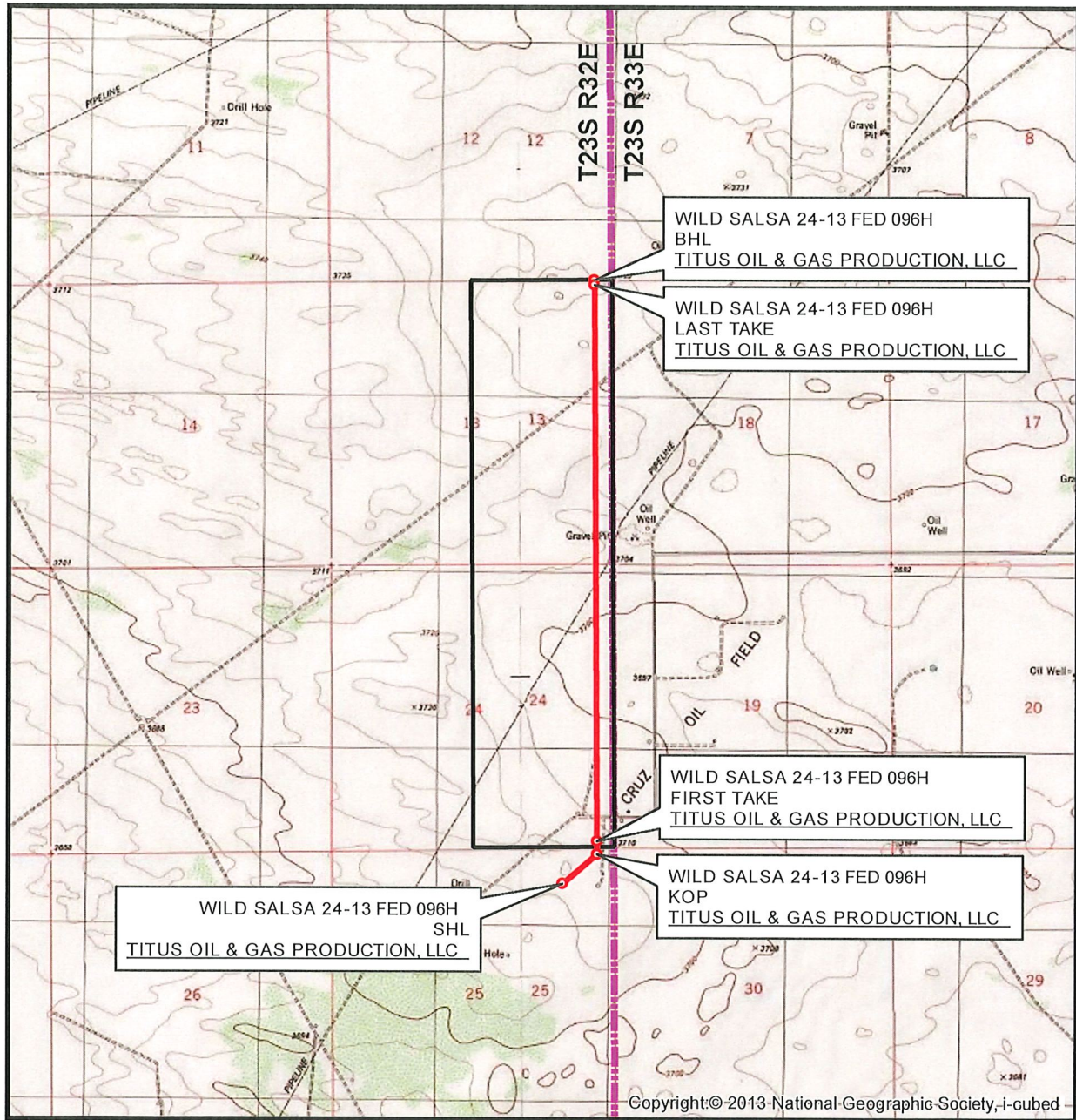
¹² Dedicated Acres 640.0	¹³ Joint or Infill	¹⁴ Consolidation Code	¹⁵ Order No.
---	-------------------------------	----------------------------------	-------------------------

No allowable will be assigned to this completion until all interests have been consolidated or a non-standard unit has been approved by the division.



Distances/areas relative to NAD 83 Combined Scale Factor: 0.9999645 Convergence Angle: 00°22'48.65002"

LOCATION VERIFICATION MAP



SEC. 25 TWP. 23-S RGE. 32-E
 SURVEY: N.M.P.M.
 COUNTY: LEA
 OPERATOR: TITUS OIL & GAS PRODUCTION, LLC
 DESCRIPTION: 678' FNL & 971' FEL
 ELEVATION: 3721'
 LEASE: WILD SALSA 24-13 FED
 U.S.G.S. TOPOGRAPHIC MAP: TIP TOP WELLS, NM.

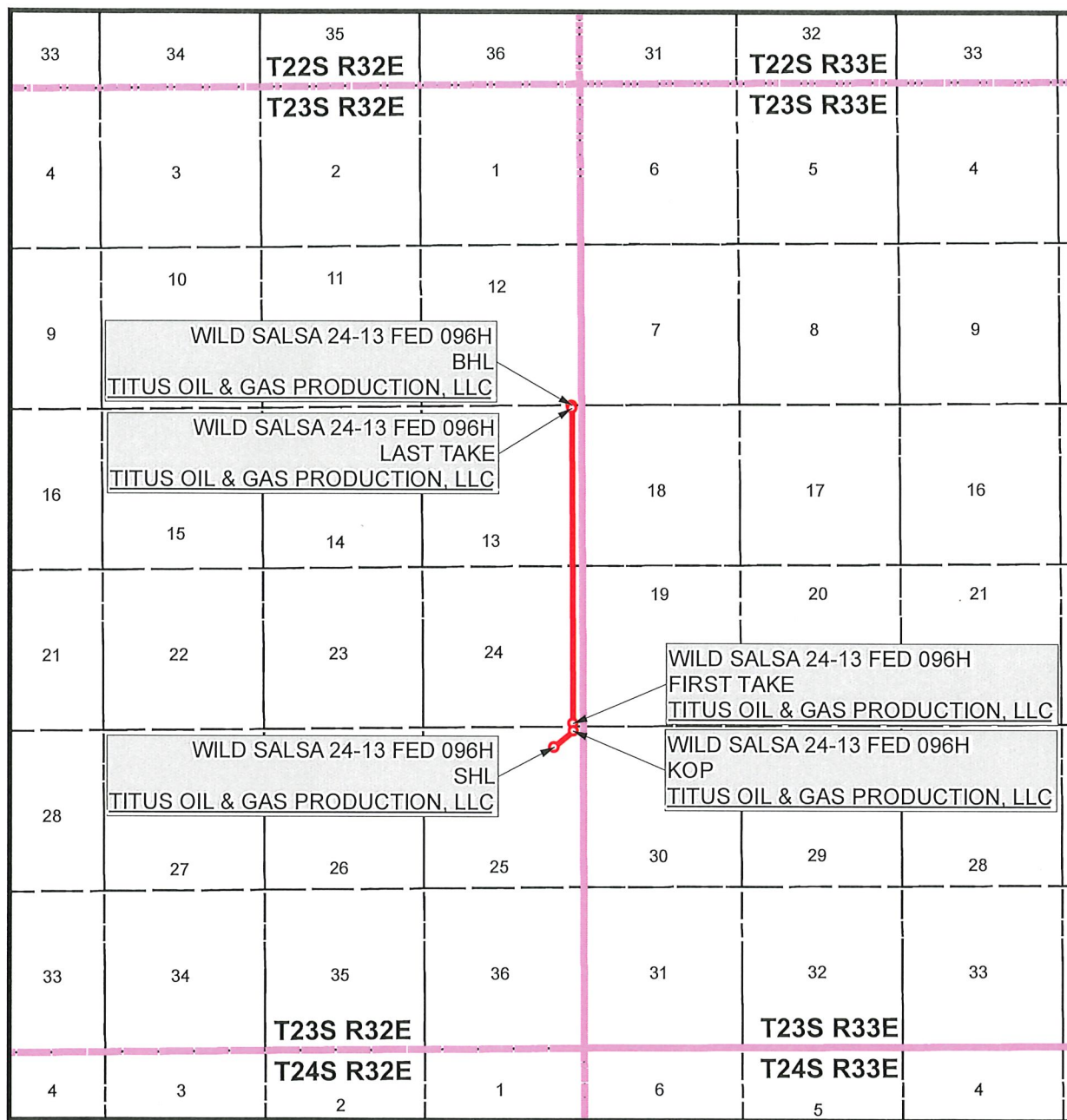
1" = 3,000'
 CONTOUR INTERVAL = 10'



SHEET 2 OF 3

PREPARED BY:
 R-SQUARED GLOBAL, LLC
 1309 LOUISVILLE AVENUE, MONROE, LA 71201
 318-323-6900 OFFICE
 JOB No. R4009_001_J

VICINITY MAP



SEC. 25 TWP. 23-S RGE. 32-E

SURVEY: N.M.P.M.

COUNTY: LEA

OPERATOR: TITUS OIL & GAS PRODUCTION, LLC

DESCRIPTION: 678' FNL & 971' FEL

ELEVATION: 3721'

LEASE: WILD SALSA 24-13 FED

U.S.G.S. TOPOGRAPHIC MAP: TIP TOP WELLS, NM.

1" = 1 MILE



SHEET 3 OF 3

PREPARED BY:
R-SQUARED GLOBAL, LLC
1309 LOUISVILLE AVENUE, MONROE, LA 71201
318-323-6900 OFFICE
JOB No. R4009_001_J