

District I  
1625 N. French Dr., Hobbs, NM 88240  
Phone: (575) 393-6161 Fax: (575) 393-9720  
District II  
811 S. First St., Artesia, NM 88210  
Phone: (575) 748-1283 Fax: (575) 748-9720  
District III  
1000 Rio Brazos Road, Aztec, NM 87410  
Phone: (505) 334-6178 Fax: (505) 334-6170  
District IV  
1220 S. St. Francis Dr., Santa Fe, NM 87505  
Phone: (505) 476-3460 Fax: (505) 476-3462

State of New Mexico  
Energy, Minerals & Natural Resources Department  
OIL CONSERVATION DIVISION  
1220 South St. Francis Dr.  
Santa Fe, NM 87505

Form C-102  
Revised August 1, 2011  
Submit one copy to appropriate  
District Office

**OCD - HOBBS**  
**08/26/2020**  
**RECEIVED**

☐ AMENDED REPORT

WELL LOCATION AND ACREAGE DEDICATION PLAT

<sup>1</sup> API Number <b>30-025-47635</b>	<sup>2</sup> Pool Code <b>17644</b>	<sup>3</sup> Pool Name <b>DIAMONDTAIL; BONE SPRING</b>
<sup>4</sup> Property Code <b>328507</b>	<sup>5</sup> Property Name <b>WILD SALSA FED COM</b>	<sup>6</sup> Well Number <b>223H</b>
<sup>7</sup> OGRID No. <b>373986</b>	<sup>8</sup> Operator Name <b>TITUS OIL &amp; GAS PRODUCTION, LLC</b>	<sup>9</sup> Elevation <b>3717'</b>

<sup>10</sup> Surface Location

UL or lot no.	Section	Township	Range	Lot Idn	Feet from the	North/South line	Feet from the	East/West line	County
B	25	23S	32E		653	NORTH	1741	EAST	LEA

<sup>11</sup> Bottom Hole Location If Different From Surface

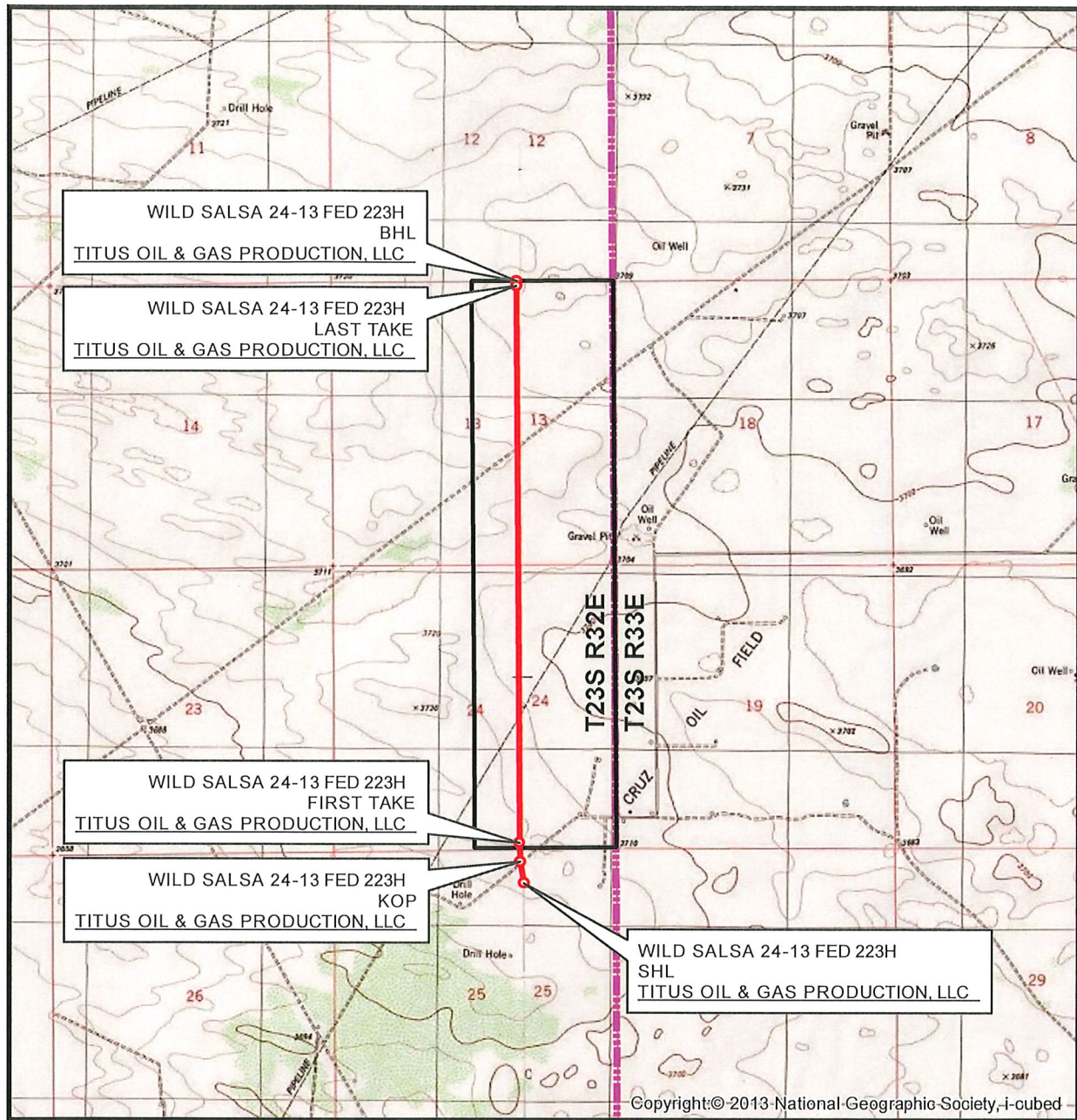
UL or lot no.	Section	Township	Range	Lot Idn	Feet from the	North/South line	Feet from the	East/West line	County
B	13	23S	32E		10	NORTH	1815	EAST	LEA

<sup>12</sup> Dedicated Acres <b>640.0</b>	<sup>13</sup> Joint or Infill	<sup>14</sup> Consolidation Code	<sup>15</sup> Order No.
---	-------------------------------	----------------------------------	-------------------------

No allowable will be assigned to this completion until all interests have been consolidated or a non-standard unit has been approved by the division.

	<p><b>CORNER COORDINATES</b> NAD 83, SPCS NM EAST A - X: 759171.19' / Y: 472680.34' B - X: 759134.45' / Y: 477961.80' C - X: 761782.38' / Y: 477986.48' D - X: 761818.23' / Y: 472706.48' E - X: 761853.01' / Y: 467425.38' F - X: 759208.47' / Y: 467399.07'</p>	<p><b>CORNER COORDINATES</b> NAD 27, SPCS NM EAST A - X: 717987.83' / Y: 472620.78' B - X: 717951.24' / Y: 477902.09' C - X: 720599.15' / Y: 477926.77' D - X: 720634.87' / Y: 472646.92' E - X: 720669.52' / Y: 467365.97' F - X: 718024.98' / Y: 467339.66'</p>	<p><b>17 OPERATOR CERTIFICATION</b> I hereby certify that the information contained herein is true and complete to the best of my knowledge and belief, and that this organization either owns a working interest or unleased mineral interest in the land including the proposed bottom hole location or has a right to drill this well at this location pursuant to a contract with an owner of such a mineral or working interest, or to a voluntary pooling agreement or a compulsory pooling order heretofore entered by the division.</p> <p>Signature: <i>Ryan DeLong</i> Date: 8/3/2020 Printed Name: Ryan DeLong - Regulatory Manager E-mail Address: rdelong@titusoil.com</p>
	<p><b>BOTTOM HOLE LOCATION</b> 10' FNL 1815' FEL, SECTION 13 NAD 83, SPCS NM EAST X: 759967.55' / Y: 477959.57' LAT: 32.31199960N / LON: 103.62564882W NAD 27, SPCS NM EAST X: 718784.33' / Y: 477899.85' LAT: 32.31187620N / LON: 103.62516563W</p>		
	<p><b>LAST TAKE POINT</b> 100' FNL 1815' FEL, SECTION 13 NAD 83, SPCS NM EAST X: 759968.39' / Y: 477869.57' LAT: 32.31175222N / LON: 103.62564803W NAD 27, SPCS NM EAST X: 718785.16' / Y: 477809.86' LAT: 32.31162882N / LON: 103.62516485W</p>		
	<p><b>FIRST TAKE POINT</b> 100' FSL 1815' FEL, SECTION 24 NAD 83, SPCS NM EAST X: 760037.10' / Y: 467507.32' LAT: 32.28326863N / LON: 103.62564697W NAD 27, SPCS NM EAST X: 718853.62' / Y: 467447.91' LAT: 32.28314513N / LON: 103.62516479W</p>		
	<p><b>KICK OFF POINT</b> 253' FNL 1815' FEL, SECTION 25 NAD 83, SPCS NM EAST X: 760039.44' / Y: 467154.33' LAT: 32.28229832N / LON: 103.62564693W NAD 27, SPCS NM EAST X: 718855.95' / Y: 467094.92' LAT: 32.28217482N / LON: 103.62516478W</p>		
<p><b>SURFACE HOLE LOCATION</b> 653' FNL 1741' FEL, SECTION 25 NAD 83, SPCS NM EAST X: 760114.61' / Y: 466754.78' LAT: 32.28119872N / LON: 103.62541224W NAD 27, SPCS NM EAST X: 718931.11' / Y: 466695.38' LAT: 32.28107522N / LON: 103.62493014W</p>			<p><b>18 SURVEYOR CERTIFICATION</b> I hereby certify that the well location shown on this plat was plotted from field notes of actual surveys made by me or under my supervision, and that the same is true and correct to the best of my belief.</p> <p>JULY 10, 2020 Date of Survey Signature and Seal of Professional Surveyor: <i>David W. Myers</i></p> <p>Certificate Number DAVID W. MYERS 11403</p>

# LOCATION VERIFICATION MAP



SEC. 25 TWP. 23-S RGE. 32-E  
SURVEY: N.M.P.M.  
COUNTY: LEA  
OPERATOR: TITUS OIL & GAS PRODUCTION, LLC  
DESCRIPTION: 653' FNL & 1741' FEL  
ELEVATION: 3717'  
LEASE: WILD SALSA 24-13 FED  
U.S.G.S. TOPOGRAPHIC MAP: BOOTLEG RIDGE, NM.

1" = 3,000'  
CONTOUR INTERVAL = 10'

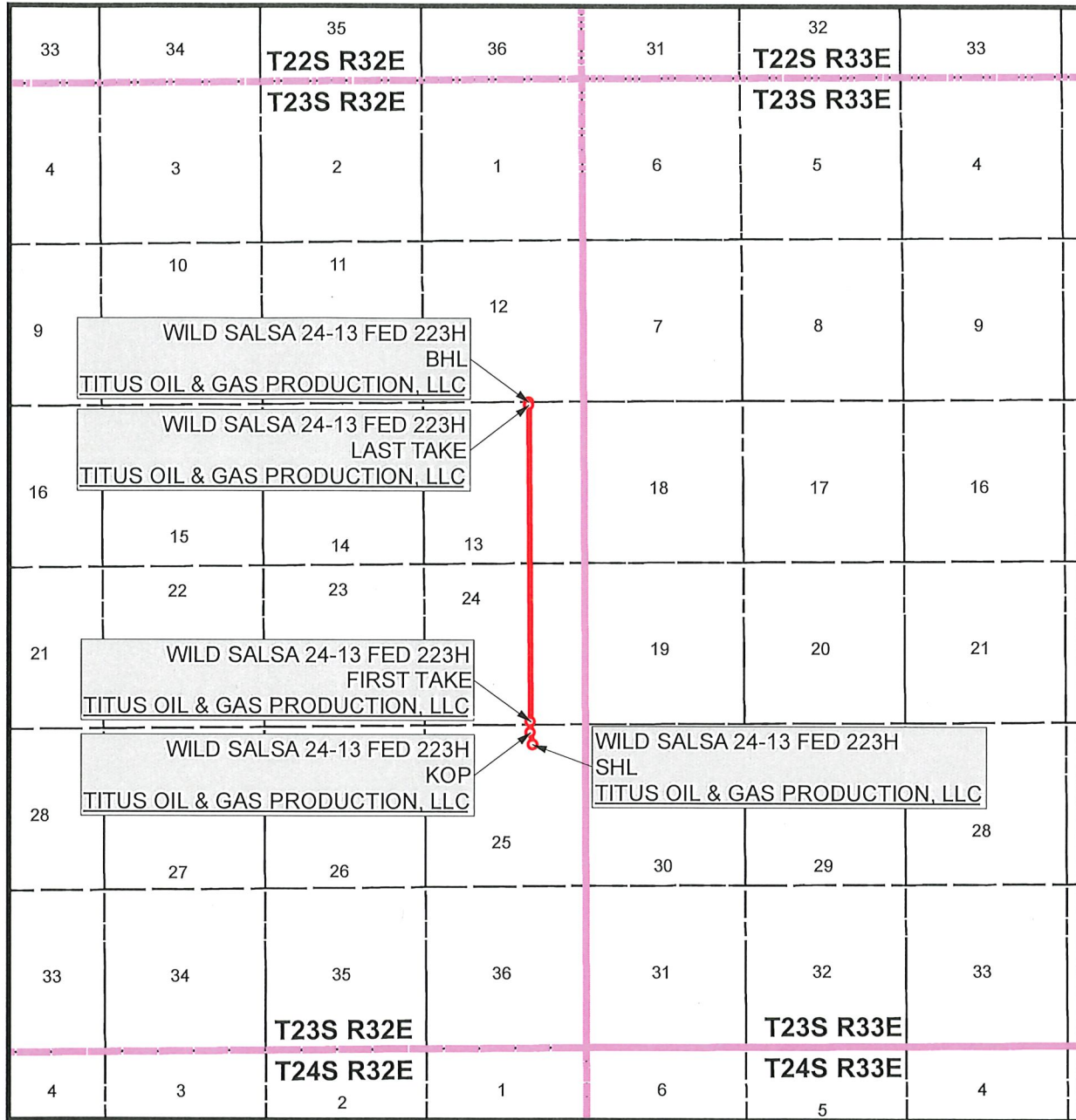


SHEET 2 OF 3

PREPARED BY:  
R-SQUARED GLOBAL, LLC  
1309 LOUISVILLE AVENUE, MONROE, LA 71201  
318-323-6900 OFFICE  
JOB No. R4009\_001\_G



# VICINITY MAP



SEC. 25 TWP. 23-S RGE. 32-E

SURVEY: N.M.P.M.

COUNTY: LEA

OPERATOR: TITUS OIL & GAS PRODUCTION, LLC

DESCRIPTION: 653' FNL & 1741' FEL

ELEVATION: 3717'

LEASE: WILD SALSA 24-13 FED

U.S.G.S. TOPOGRAPHIC MAP: BOOTLEG RIDGE, NM.

1" = 1 MILE



SHEET 3 OF 3

PREPARED BY:  
R-SQUARED GLOBAL, LLC  
1309 LOUISVILLE AVENUE, MONROE, LA 71201  
318-323-6900 OFFICE  
JOB No. R4009\_001\_G